

URBAN

LIVING

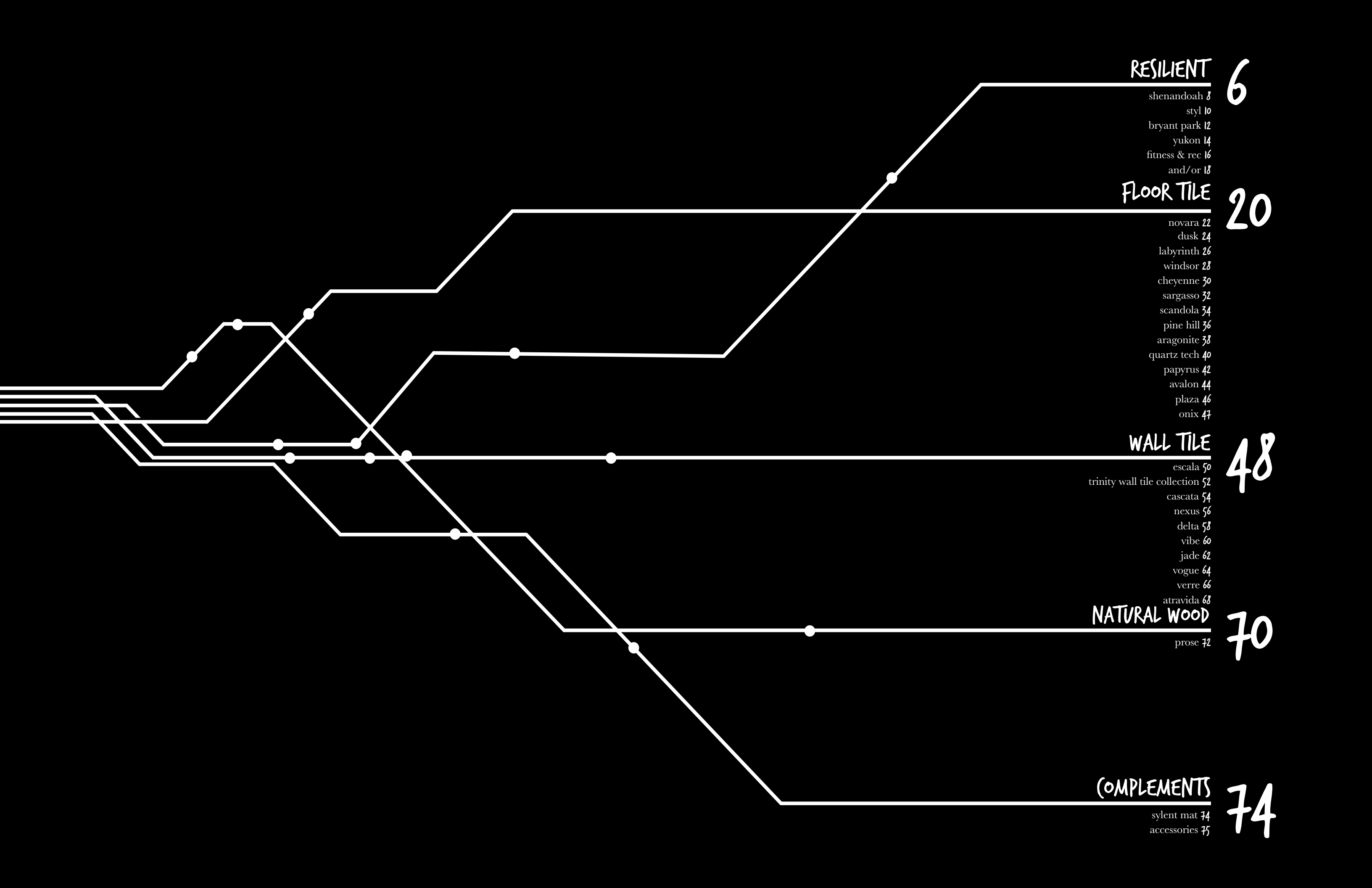
by trinity tile

Your design deadline is approaching, but that's when you work your best. You look for colors and textures that stimulate your creativity. Now is time to bring your client's dream to life.

Whether you are designing a clubhouse, a fitness center, or individual units, it is crucial to have a partner that can supply all of your surface design needs. Architects and designers like you have been successfully partnering with trinity tile for over twenty years.

With trinity tile' Urban Living catalog, you will find a harmonious blend of tile and mosaics, luxury vinyl tile, hardwood, rubber and accessories. These quality products are stylish while at an attractive price-point, which embodies the essence of urban living. Browse our catalog, select our product and the result will be fresh and innovative.





**RESILIENT**

6

- shenandoah 8
- styl 10
- bryant park 12
- yukon 14
- fitness & rec 16
- and/or 18

**FLOOR TILE**

20

- novara 22
- dusk 24
- labyrinth 26
- windsor 28
- cheyenne 30
- sargasso 32
- scandola 34
- pine hill 36
- aragonite 38
- quartz tech 40
- papyrus 42
- avalon 44
- plaza 46
- onix 47

**WALL TILE**

48

- escala 50
- trinity wall tile collection 52
- cascata 54
- nexus 56
- delta 58
- vibe 60
- jade 62
- vogue 64
- verre 66
- atravida 68

**NATURAL WOOD**

70

- prose 72

**(COMPLEMENTS)**

74

- syient mat 74
- accessories 75

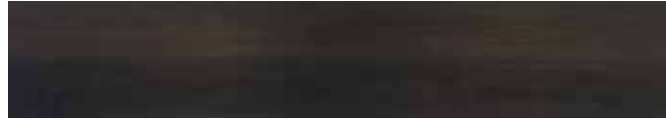


RESILIENT



# SHENANDOAH

LUXURY VINYL TILE



hightop mountain



milam gap



oaks overlook



tanner's ridge



saddleback mountain



sawmill run



black rock gap



ivy creek



timber hollow



point overlook



pinefield gap



loft mountain

## TECHNICAL SPECIFICATIONS

dimensions	6"x36"
wear layer	8mil
surface texture	embossed
edge detail	square
warranty	1 year commercial 5 year residential





# STYL

## LUXURY VINYL TILE



washington cherry



american walnut cinnamon



contemporary maple espresso



american walnut charcoal



american walnut honey



sawn oak brown



sawn oak grey



contemporary maple cappuccino



ontario apple



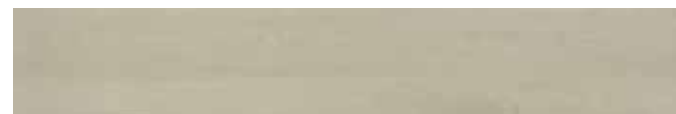
american walnut tan



contemporary maple silver



baltic oak suede



baltic oak white



contemporary maple blonde



baltic oak tin



baltic oak taupe

### TECHNICAL SPECIFICATIONS

dimensions	6"x36"
nominal thickness	2mm
surface texture	slight embossing
edge detail	straight
wear layer	8 mil
warranty	10 year residential



# BRYANT PARK

LUXURY VINYL TILE



5th ave stone concrete



madison stone concrete



wall street lineal concrete



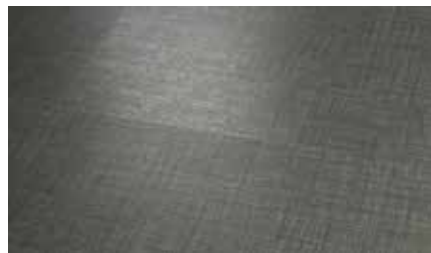
canal lineal concrete



central park wood end grain



st marks wood end grain



grand central fabric



delaney fabric



rockefeller duomo stone



broadway duomo stone



BRYANT PARK BROADWAY DUOMO STONE

TECHNICAL SPECIFICATIONS	STONE/CONCRETE, LINEAL CONCRETE & FABRIC	DUOMO STONE & WOOD END PLANK
dimensions	18"x36"x3mm	6"x48"x3mm
wear layer	20mil	20mil
surface texture	various	various
edge detail	square	beveled
warranty	10 year commercial lifetime year residential	10 year commercial lifetime year residential



# YUKON

LUXURY VINYL TILE



pelham maple



terret hickory



oceanside french oak



bridle hickory



riata hickory



montecito french oak



rawhide hickory



solana french oak



redondo french oak



la palma french oak



piedmont french oak



newport french oak

## TECHNICAL SPECIFICATIONS

dimensions	7¼"x48"x3mm
wear layer	20mil
surface texture	hand scraped or wire brush
edge detail	micro bevel edge
warranty	20 year commercial 25 year residential



YUKON NEWPORT FRENCH OAK



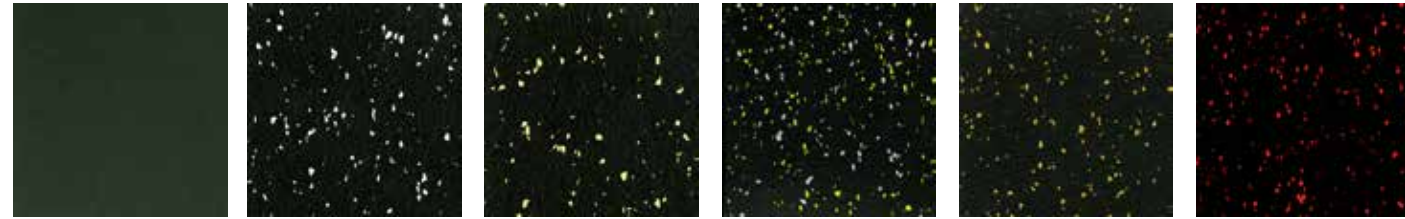
YUKON REDONDO FRENCH OAK



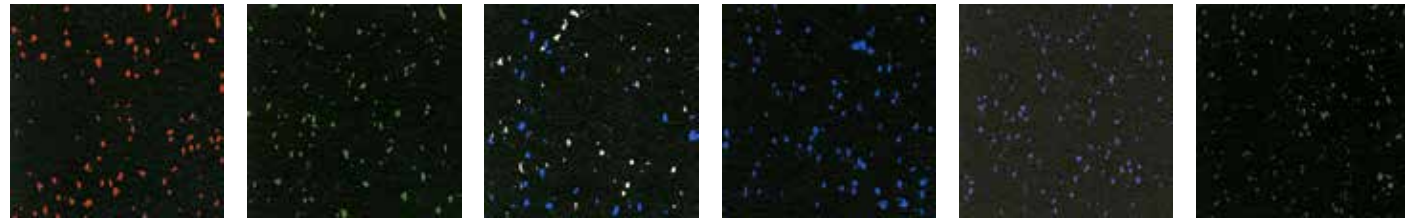
# FITNESS & REC

## RUBBER TILE

### STRENGTH

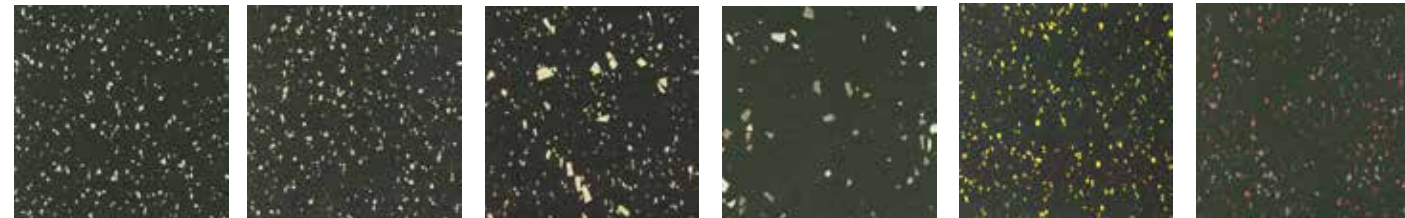


after dark cloudy cream lemonade trophy cardinal

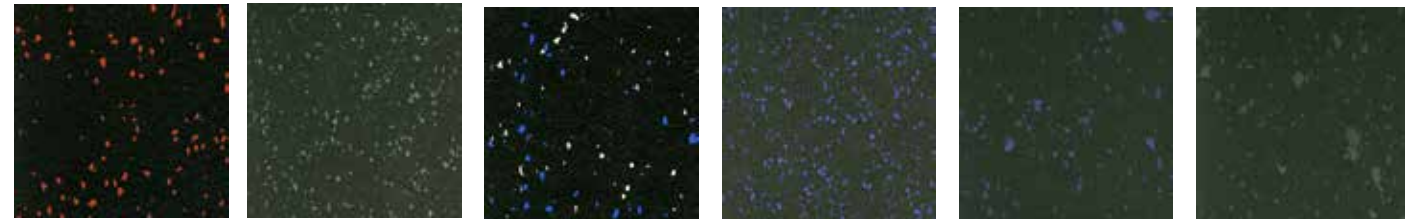


fire grass galaxy blue night violet alley

### ENDURANCE

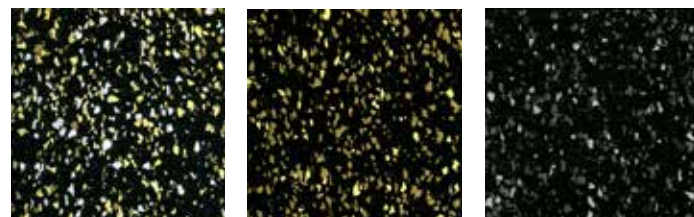


black tie nightlight starry night moon rocks sunspots hot coals



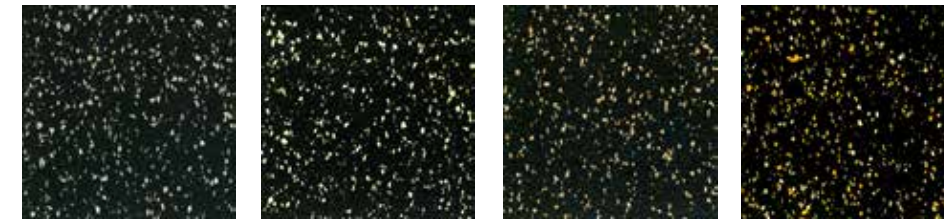
after glow fireglow black forest blue moon twilight zone black earth

### TONE

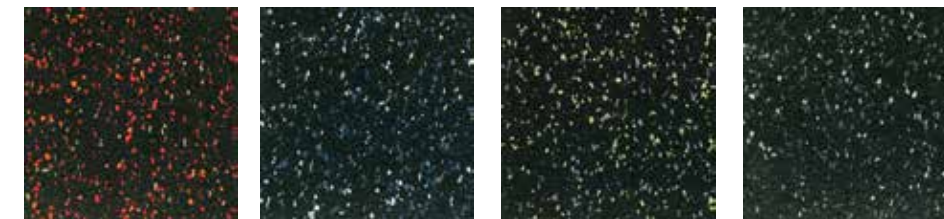


spirit zing vim

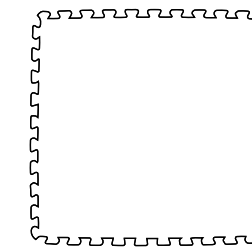
### STAMINA



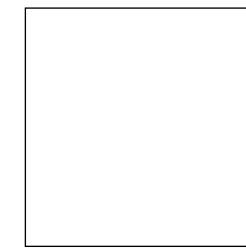
zeal action force power



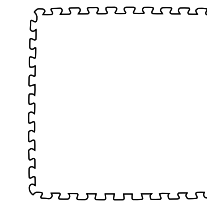
zest motion bounce vigor



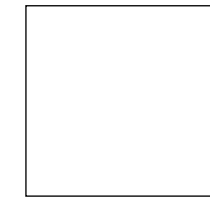
**36"x36"**  
**interlocking 8mm or greater**  
all colors  
minimums will apply  
for stamina & tone



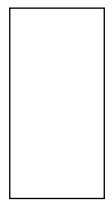
**36"x36"**  
all colors  
minimums will apply  
for stamina & tone



**24"x24" interlocking 8mm or greater**  
all colors



**24"x24"**  
all colors



**12"x24"**  
all colors

### TECHNICAL SPECIFICATIONS

roll size	4' wide
nominal thickness	3.2, 4, 6, 8, 9, 12mm
tile size	12x24, 24x24, 36x36 24x24 interlocking < 8mm 36x36 interlocking < 8mm

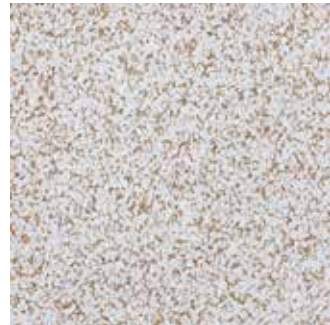


# AND/OR

## RUBBER TILE



dove



skylight



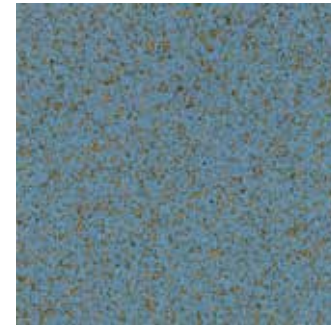
sand



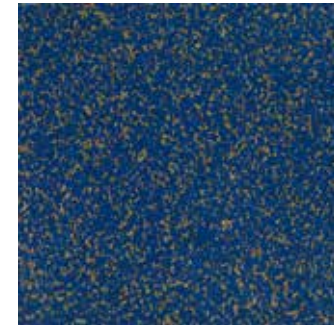
wheat



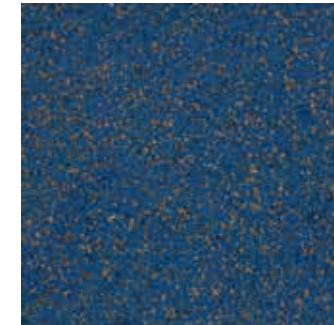
red



splash



bluebird



blue



putty



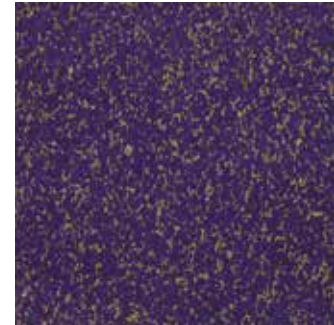
cumin



cappuccino



bay leaf



iris



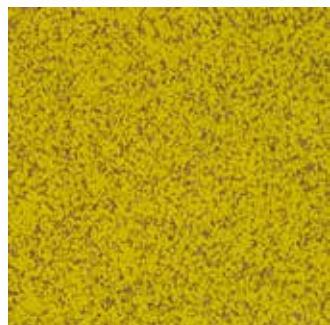
caribbean



jungle



cloudburst



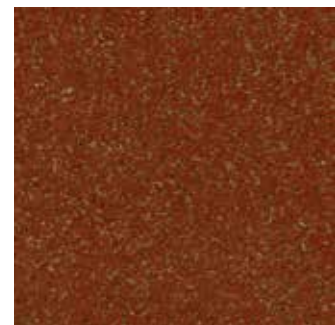
daffodil



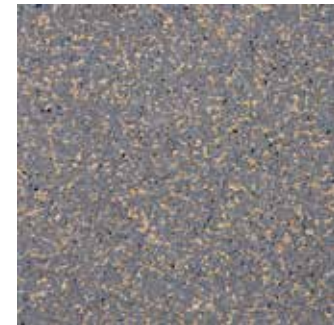
gold



orange



brick



iron



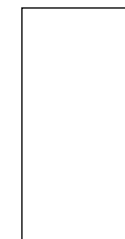
pewter



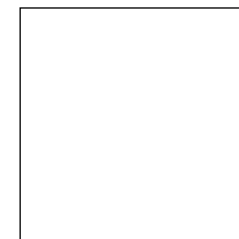
raisin

### TECHNICAL SPECIFICATIONS

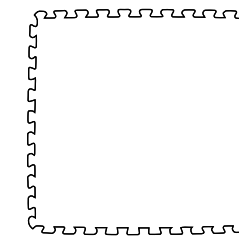
roll size	4' wide
nominal thickness	3.2, 4, 6, 8, 9mm
tile sizes	12x24, 24x24, 24x24 interlocking (8mm or 9mm)



12"x24"  
all colors



24"x24"  
all colors



24"x24"  
interlocking  
8mm or 9mm  
all colors





# FLOOR TILE



# NOVARA

PORCELAIN TILE



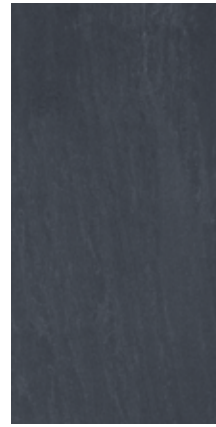
beige



soft gris



pewter



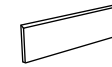
black



**12"x24"**  
beige  
soft gris  
pewter  
black



**2"x2" mosaic**  
beige  
soft gris  
pewter  
black



**3"x12" bullnose**  
beige  
soft gris  
pewter  
black

## TECHNICAL SPECIFICATIONS

nominal thickness	-	8.5mm
shade variation	-	v3
water absorption	ASTM C373	≤ 0.5%
dcof	ANSI 137.1	≥ 0.6
finish	-	matte



NOVARA BLACK

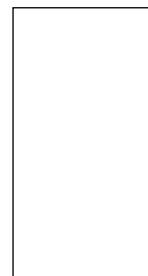


# DUSK

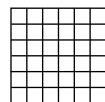
PORCELAIN TILE



nordic arena sabbia steel graphite coffee



**12"x24"**  
nordic  
arena  
sabbia  
steel  
graphite  
coffee



**2"x2"**  
**mosaic**  
nordic  
arena  
sabbia  
steel  
graphite  
coffee



**3"x12"**  
**bullnose**  
nordic  
arena  
sabbia  
steel  
graphite  
coffee

## TECHNICAL SPECIFICATIONS

nominal thickness	-	8.5mm
shade variation	-	v2
water absorption	ASTM C373	≤ 0.5%
dcof	ANSI 137.1	≥ 0.6
finish	-	matte



DUSK COFFEE



# LABYRINTH

PORCELAIN TILE



blanco



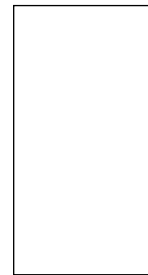
arena



gris



graphite



12"x24"

blanco  
arena  
gris  
graphite

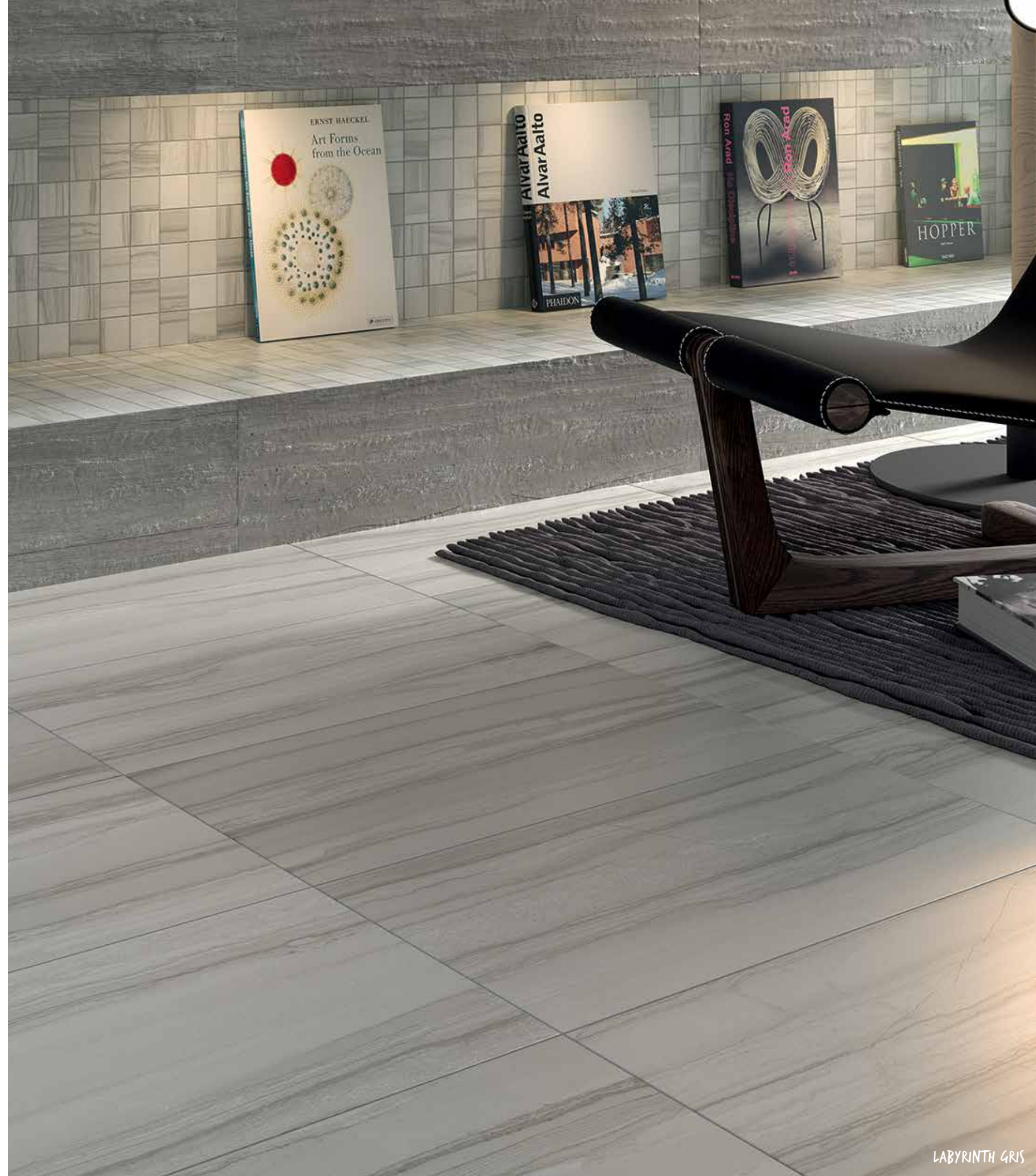


3"x12"

**bullnose**  
blanco  
arena  
gris  
graphite

## TECHNICAL SPECIFICATIONS

nominal thickness	-	8.5mm
scratch hardness	MOHS	5
shade variation	-	v3
water absorption	ASTM C373	< 0.5%
frost resistance	ASTM C1026	resistant
dcof	ANSI 137.1	≥ 0.52
finish	-	matte





# WINDSOR

PORCELAIN TILE

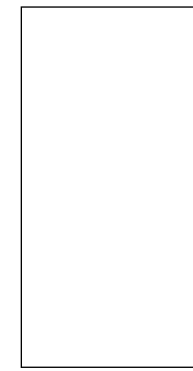


blanco

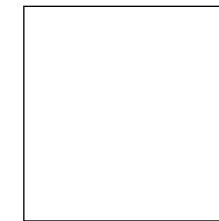
## TECHNICAL SPECIFICATIONS

nominal thickness	-	8.5mm
scratch hardness	MOHS	matte 5
shade variation	-	matte v3
water absorption	ASTM C373	< 0.5%
frost resistance	ASTM C1026	resistant
dcof	ANSI 137.1	matte ≥ 0.51
finish	-	matte, gloss & polished

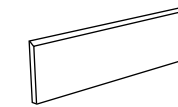
## PORCELAIN FLOOR TILE



**12"x24"**  
blanco matte & polished

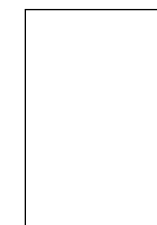


**13"x13"**  
blanco matte

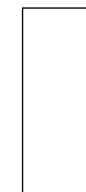


**3"x12"**  
**bullnose**  
blanco matte

## CERAMIC WALL TILE



**9.5"x13"**  
blanco gloss



**4"x10"**  
blanco gloss



**4"x10" bevel**  
blanco gloss



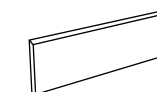
**3"x10"**  
blanco gloss



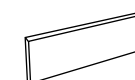
**3"x6"**  
blanco gloss



**3"x6" bevel**  
blanco gloss



**3"x9½"**  
**bullnose**  
blanco gloss



**3"x6"**  
**bullnose**  
blanco gloss



# CHEYENNE

PORCELAIN TILE



beige



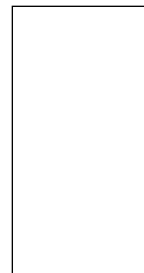
light grey



dark grey

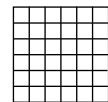


noce



**12"x24"**

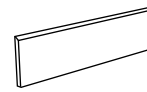
beige  
light grey  
dark grey  
noce



**2"x2"**

**mosaic**

beige  
light grey  
dark grey  
noce



**3"x12"**

**bullnose**

beige  
light grey  
dark grey  
noce

## TECHNICAL SPECIFICATIONS

nominal thickness	-	8.5mm
shade variation	-	v3
water absorption	ASTM C373	≤ 0.5%
dcof	ANSI 137.1	≥ 0.67
finish	-	matte





# SARGASSO

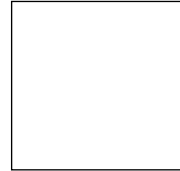
PORCELAIN TILE



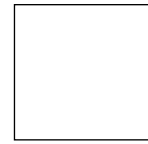
blanco



beige



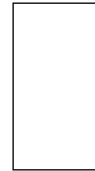
**24"x24"x9mm  
rectified**  
blanco  
beige



**21"x21"x8.5mm**  
blanco  
beige



**12"x24"x8.5mm  
rectified**  
blanco



**12"x24"x8.5mm**  
blanco  
beige



**13"x13"x8.5mm**  
blanco  
beige



**9½"x13"x8.5mm  
wall tile\***  
blanco  
beige



**3"x9½"x8.5mm  
bullnose  
wall tile\***  
blanco  
beige



**3"x13"x8.5mm  
bullnose**  
blanco  
beige



**3"x12"x8.5mm  
bullnose**  
blanco  
beige

\*ceramic



SARGASSO BEIGE

## TECHNICAL SPECIFICATIONS

nominal thickness	-	8.5mm & 9mm
scratch hardness	MOHS	5
shade variation	-	v3
water absorption	ASTM C373	< 0.5%
frost resistance	ASTM C1026	resistant
dcof	ANSI 137.1	> 0.42
finish	-	matte

# SCANDOLA

PORCELAIN TILE



grey



maple



walnut



wenge



6"x24"

grey  
maple  
walnut  
wenge

## TECHNICAL SPECIFICATIONS

nominal thickness	-	8.5mm
shade variation	-	v2
water absorption	ASTM C373	≤ 0.5%
dcof	ANSI 137.1	≥ 0.47
finish	-	matte



SCANDOLA MAPLE



# PINE HILL

PORCELAIN TILE



abeto



liana



wenge



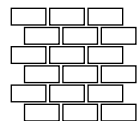
bambu



ebano



**6"x24"**  
abeto  
liana  
wenge  
bambu  
ebano



**12"x12"**  
**mosaic**  
wenge

## TECHNICAL SPECIFICATIONS


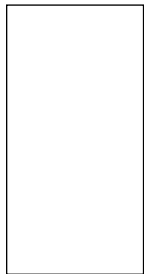
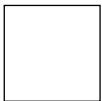
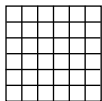

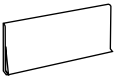
nominal thickness	-	9mm
shade variation	-	v2
water absorption	ASTM C373	< 0.5%
dcof	ANSI 137.1	≥ 0.42
finish	-	matte



# ARAGONITE

THRU COLOR PORCELAIN TILE



 <p><b>18"x36"</b> <b>rectified</b> bone matte amber matte earth matte grey matte blue matte green matte</p>	 <p><b>12"x24"</b> bone matte &amp; flamed amber matte earth matte &amp; flamed grey matte blue matte &amp; flamed green matte</p>	 <p><b>12"x12"</b> bone matte amber matte earth matte grey matte blue matte green matte</p>	 <p><b>2"x2"</b> <b>mosaic</b> bone matte amber matte earth matte grey matte blue matte green matte</p>	 <p><b>3"x12"</b> <b>bullnose</b> bone matte amber matte earth matte grey matte blue matte green matte</p>	 <p><b>6"x12"</b> <b>cove base</b> bone matte amber matte earth matte grey matte blue matte green matte</p>
--	---	--	--	---	--

**TECHNICAL SPECIFICATIONS**

nominal thickness	-	8mm
hardness	MOHS	≥ 7
water absorption	ASTM C373	≤ 0.1%
dcof	ANSI 137.1	≥ 0.49
finish	-	matte & flamed





# QUARTZ TECH

THRU BODY PORCELAIN TILE



white quartz    silver gray    golden stone    natural rock    dark quartz

## TECHNICAL SPECIFICATIONS

nominal thickness	-	20mm, 10mm, 9.5mm, 9mm
bending strength	ISO 10545-4	≥ 47 N/mm <sup>2</sup>
deep scratch resistance	ISO 10545-6	≤ 145 mm <sup>3</sup>
water absorption	ISO 10545-3	0.5%
frost resistance	ISO 10545-12	resistant
dcof	ANSI 137.1	≥ 0.42
finish	-	matte & grip

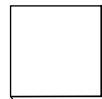


QUARTZ TECH SILVER GREY



**23½" x 23½" x 10mm**

white quartz matte rectified  
golden stone matte rectified  
silver gray matte rectified  
dark quartz matte rectified  
natural rock matte rectified



**23½" x 23½" x 20mm**

white quartz grip rectified  
golden stone grip rectified  
silver gray grip rectified



**17 1/16" x 17 1/16" x 9.5mm**

white quartz grip non-rectified  
golden stone grip non-rectified  
silver gray grip non-rectified  
dark quartz grip non-rectified



**11 1/16" x 11 1/16" x 9mm**

white quartz grip non-rectified  
golden stone grip non-rectified  
silver gray grip non-rectified  
dark quartz grip non-rectified



**7 7/8" x 23 5/8" x 10mm**

white quartz matte rectified  
golden stone matte rectified  
silver gray matte rectified  
dark quartz matte rectified  
natural rock matte rectified



**11 1/16" x 13" step tread**

white quartz grip non-rectified  
golden stone grip non-rectified  
silver gray grip non-rectified  
dark quartz grip non-rectified



**13" x 13" step tread corner**

white quartz matte rectified & grip non-rectified  
golden stone matte rectified & grip non-rectified  
silver gray matte rectified & grip non-rectified  
dark quartz matte rectified & grip non-rectified  
natural rock matte rectified



**5 7/8" x 5 7/8" x 9mm**

white quartz grip rectified  
golden stone grip rectified  
silver gray grip rectified  
dark quartz grip rectified



**15 3/4" x 23 5/8" x 10mm**

white quartz matte rectified  
golden stone matte rectified  
silver gray matte rectified  
dark quartz matte rectified  
natural rock matte rectified



**11 1/16" x 23 5/8"**

white quartz matte rectified & grip non-rectified  
golden stone matte rectified & grip non-rectified  
silver gray matte rectified & grip non-rectified  
dark quartz matte rectified & grip non-rectified  
natural rock matte rectified  
9.5mm grip, 10mm matte



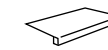
**6 1/2" x 11 1/16" x 11 1/16"**

**rounded coving**  
white quartz grip non-rectified  
golden stone grip non-rectified  
silver gray grip non-rectified  
dark quartz grip non-rectified



**3" x 12" bullnose**

white quartz grip non-rectified  
golden stone grip non-rectified  
silver gray grip non-rectified  
dark quartz grip non-rectified



**13" x 23 5/8"**

**step tread**  
white quartz grip non-rectified  
golden stone grip non-rectified  
silver gray grip non-rectified  
dark quartz grip non-rectified

# PAPYRUS

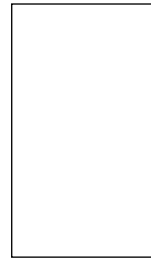
CERAMIC TILE



blanco



gris



13"x24"

blanco

gris

## TECHNICAL SPECIFICATIONS

nominal thickness	-	7.4mm
shade variation	-	v2
scratch hardness	MOHS	5
dcof	ANSI 137.1	>.42
finish	-	matte



PAPYRUS GRIS



PAPYRUS BLANCO



# AVALON

CERAMIC TILE



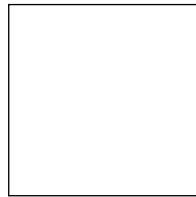
beige



gris



**11"x23"**  
beige  
gris



**18"x18"**  
beige  
gris



**3"x18"**  
**bullnose**  
beige  
gris

## TECHNICAL SPECIFICATIONS

nominal thickness	-	8mm
scratch hardness	MOHS	7
abrasion resistance	ASTM C1027	4
water absorption	ASTM C373	≥ 7.76%
chemical resistance	ASTM C650	resistant
cof	ANSI 137.1	wet ≥ 0.57, dry ≥ 0.80
finish	-	matte



# PLAZA

CERAMIC TILE



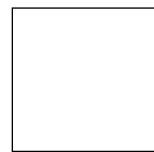
rugged brown



toasted beige



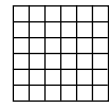
whipped cream



**18"x18"**  
rugged brown  
toasted beige  
whipped cream



**10"x13"**  
**wall tile**  
rugged brown  
toasted beige  
whipped cream



**2"x2"** **mosaic**  
rugged brown  
toasted beige  
whipped cream



**3"x18"**  
**floor bullnose**  
rugged brown  
toasted beige  
whipped cream



**2"x10"**  
**wall bullnose**  
rugged brown  
toasted beige  
whipped cream

## TECHNICAL SPECIFICATIONS

nominal thickness	-	8mm
scratch hardness	MOHS	6
crazing resistance	ASTM C424	resistant
water absorption	ASTM C373	6.87%
chemical resistance	ASTM C650	resistant
cof	ASTM C1028	wet 0.66, dry 0.79
finish	-	matte

# ONIX

CERAMIC MOSAIC



white matte



white stone



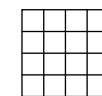
cameo



sand



wheat



**3"x3"**  
**mosaic**  
white matte  
white stone  
cameo  
wheat  
sand

## TECHNICAL SPECIFICATIONS

nominal thickness	-	5mm
scratch hardness	MOHS	9
stain resistance	ASTM C378	resistant
water absorption	ASTM C373	4.36%
chemical resistance	ASTM C650	resistant
cof	ASTM C1028	wet 0.69, dry 0.97
finish	-	matte



# WALL TILE





# ESCALA

CERAMIC MOSAIC



graphite flat



smoke flat



steel flat



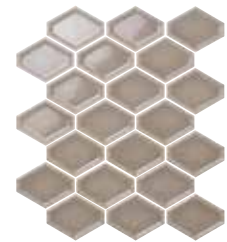
eggshell flat



crema flat



graphite in



smoke in



steel in



eggshell in



crema in



graphite out



smoke out



steel out



eggshell out



crema out



graphite mix



smoke mix



steel mix



eggshell mix

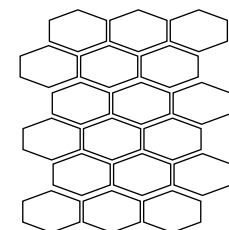


crema mix

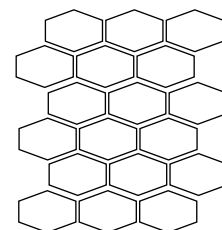
## TECHNICAL SPECIFICATIONS

nominal thickness	-	9mm
finish	-	gloss
water absorption	A 187.1	< 10%
dimensionality	ISO 10545-2	premium grade conformance
thermal shock and crazing	ISO 10545-9/11	pass
resistance to stains	ISO 10545-13	pass

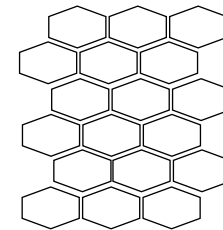
ESCALA STEEL



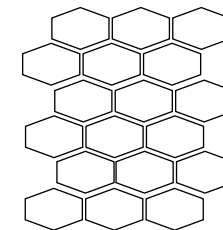
**12 1/2" x 14 1/4" flat**  
graphite  
smoke  
steel  
eggshell  
crema



**12 1/2" x 14 1/4" in**  
graphite  
smoke  
steel  
eggshell  
crema



**12 1/2" x 14 1/4" out**  
graphite  
smoke  
steel  
eggshell  
crema



**12 1/2" x 14 1/4" mix**  
graphite  
smoke  
steel  
eggshell  
crema



**1" x 6" pencil round**  
graphite  
smoke  
steel  
eggshell  
crema

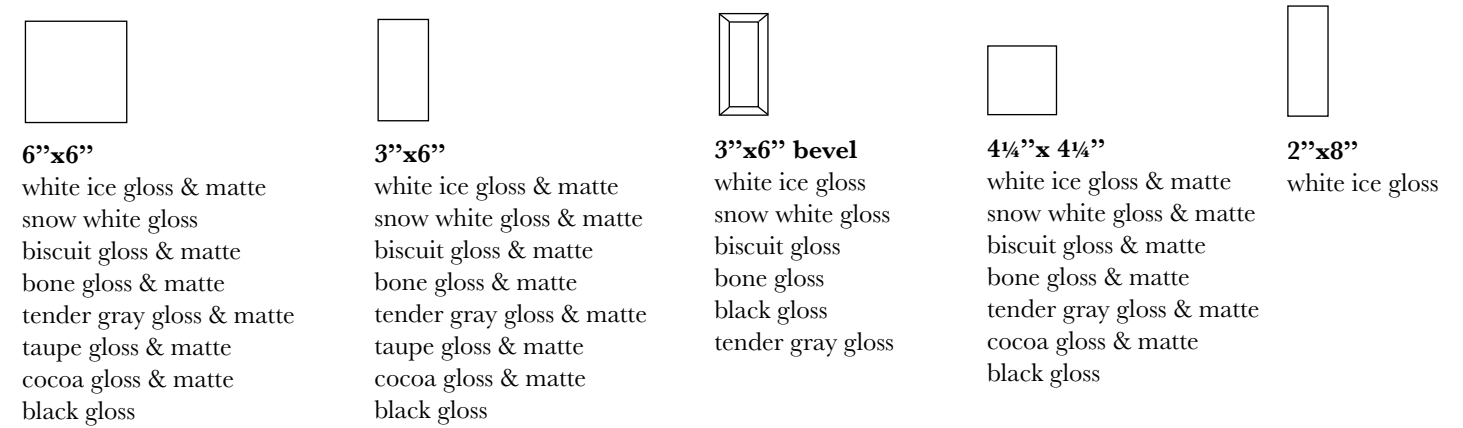
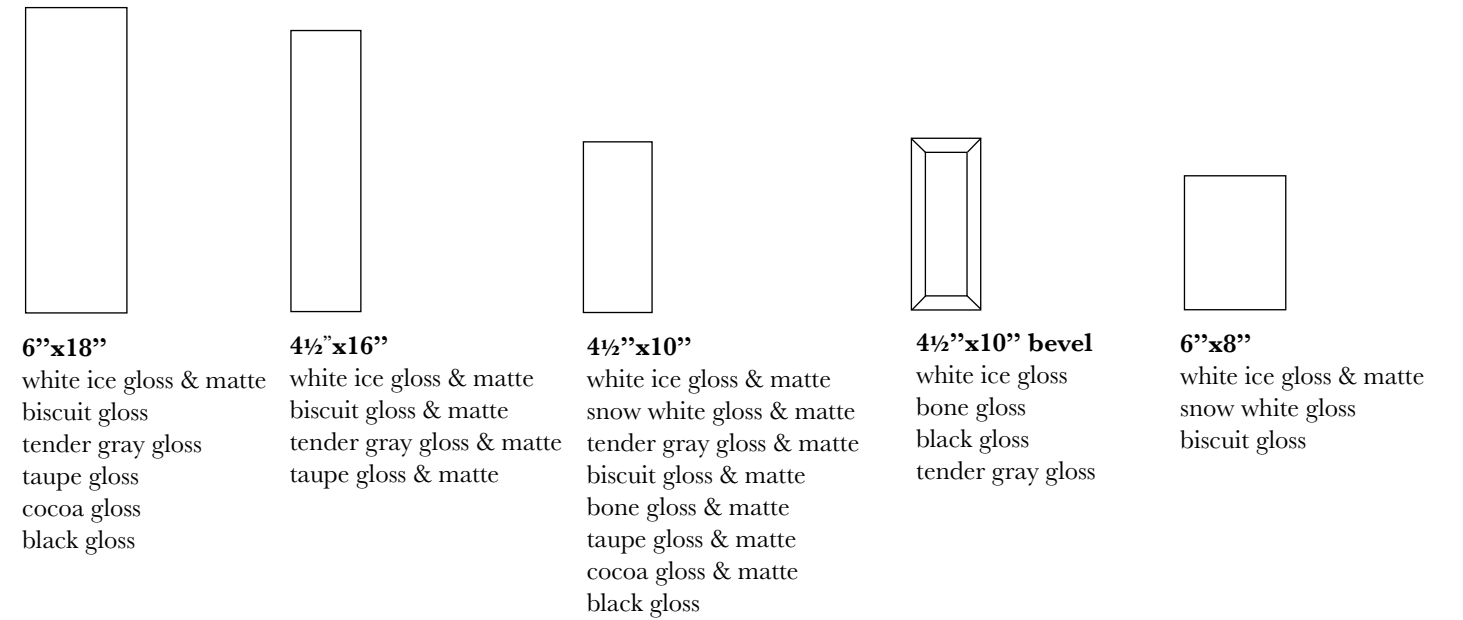
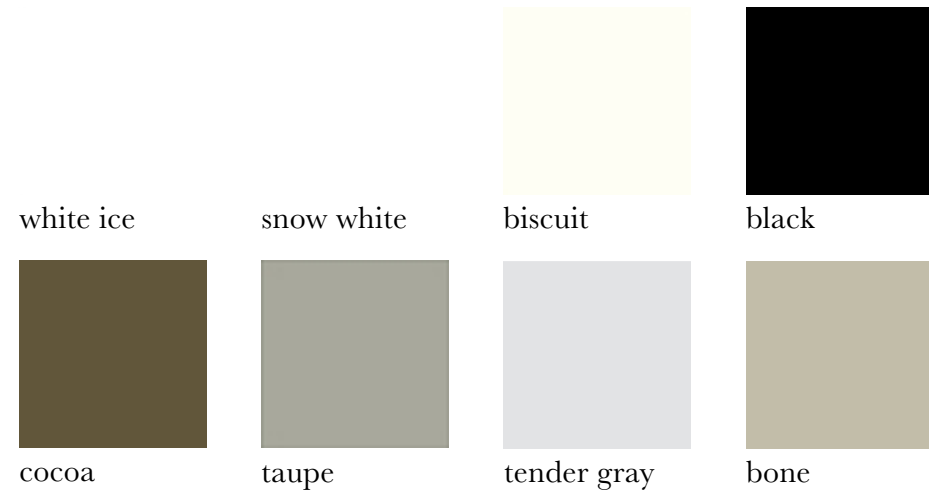


**1" x 1" PB corner**  
graphite  
smoke  
steel  
eggshell  
crema



# TRINITY WALL TILE COLLECTION

CERAMIC WALL TILE



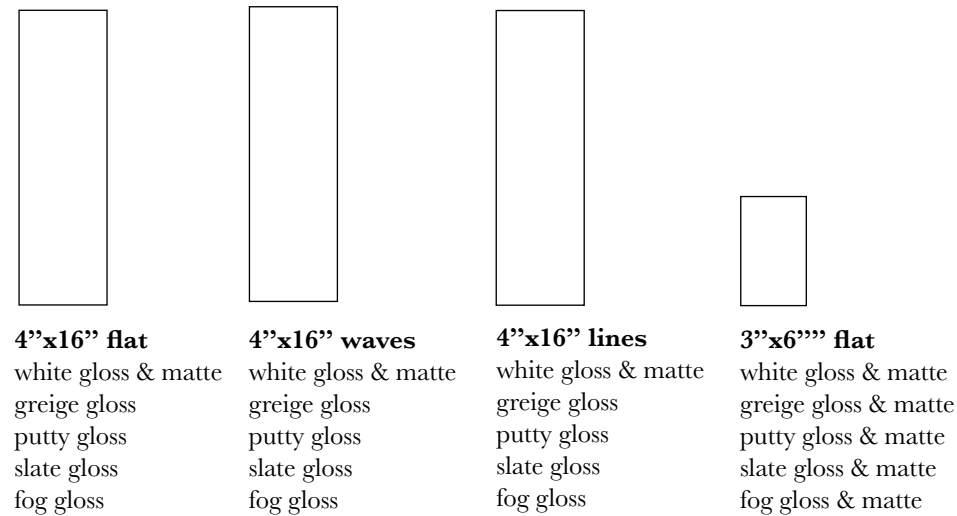
BEVELED WHITE ICE

## TECHNICAL SPECIFICATIONS

nominal thickness	4mm
finish	matte & gloss

# CASCATA

CERAMIC WALL TILE



## TECHNICAL SPECIFICATIONS

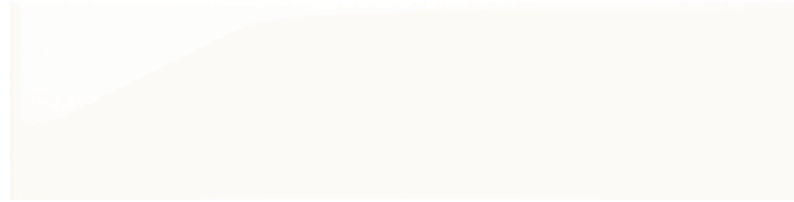
nominal thickness	-	8mm
finish	-	gloss
water absorption	A 187.1	< 10%
dimensionality	ISO 10545-2	premium grade conformance
thermal shock and crazing	ISO 10545-9/11	pass
resistance to stains	ISO 10545-13	pass





# NEXUS

CERAMIC WALL TILE



white



grey



4"x16"  
white  
grey



3"x6"  
white  
grey



1/3"x8"  
**pencil bullnose**  
white  
grey



1/3"x1/3"  
**PB corner**  
white  
grey

## TECHNICAL SPECIFICATIONS

nominal thickness	-	8mm (4"x16" & 7.3mm (3"x6"))
finish	-	matte & gloss
water absorption	A 187.1	17%
breaking strength	ISO 10545-4	961.1 N
thermal shock and crazing	ISO 10545-9	pass
resistance to stains	ISO 10545-13	pass



# DELTA

RECTIFIED PORCELAIN WALL TILE



delta gris



delta bianco



delta fawn



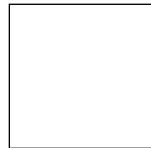
delta mix



brick gris



brick mix



24"x24"

- delta gris
- delta mix
- delta bianco
- delta fawn
- brick gris
- brick mix

## TECHNICAL SPECIFICATIONS

nominal thickness	9.5mm
finish	matte





# VIBE

CERAMIC WALL TILE



prism



blocos



alvorada



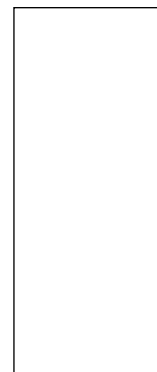
romance



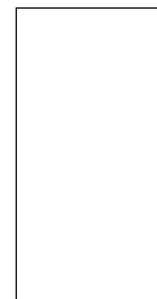
algas



redes



12"x36"  
prism  
blocos  
alvorada  
romance



12"x24"  
algas  
redes

## TECHNICAL SPECIFICATIONS

nominal thickness	9.5mm (12"x24") & 12mm (12"x36")
finish	matte



# JADE

CERAMIC WALL TILE



blanco



perola



negro



ondas



12"x36"

- blanco
- perola
- negro
- ondas

### TECHNICAL SPECIFICATIONS

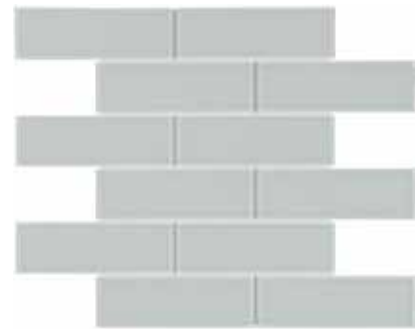
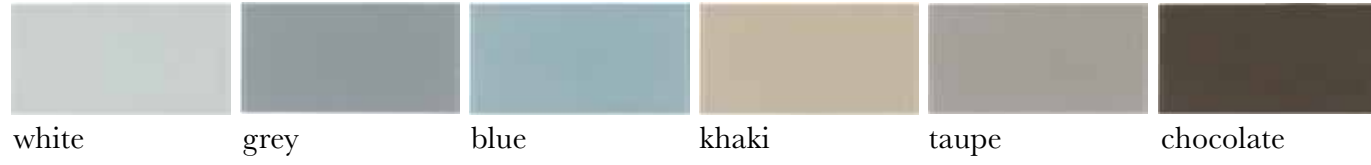
nominal thickness	12mm
finish	matte



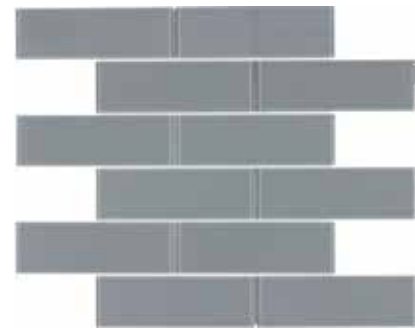


# VOGUE

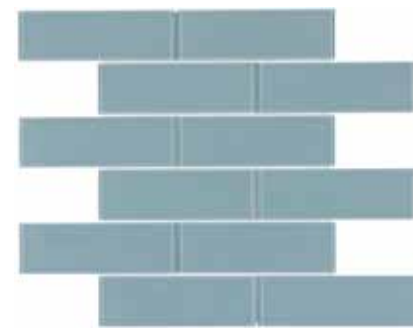
GLASS MOSAIC & GLASS FIELD TILE



white mosaic



grey mosaic



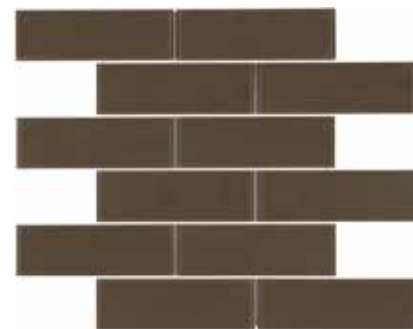
blue mosaic



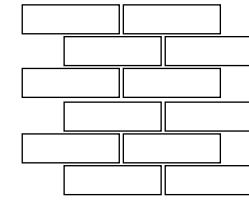
khaki mosaic



taupe mosaic



chocolate mosaic



**14 3/4" x 11 3/4"**  
**mosaic**  
 white  
 grey  
 blue  
 khaki  
 taupe  
 chocolate



**4" x 8"**  
 white  
 grey  
 blue  
 khaki  
 taupe  
 chocolate

## TECHNICAL SPECIFICATIONS

nominal thickness	4mm
finish	gloss

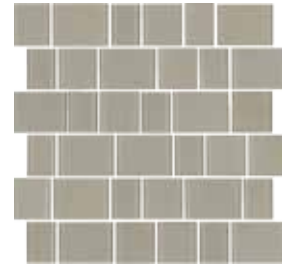


# VERRE

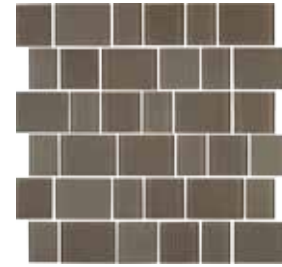
GLASS MOSAIC



white



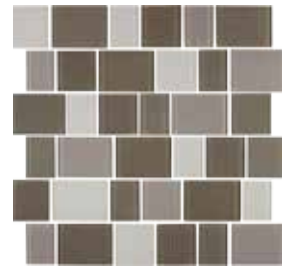
bone



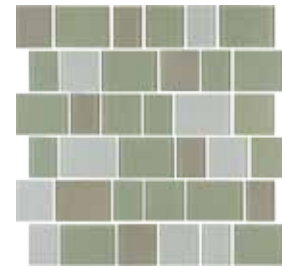
taupe



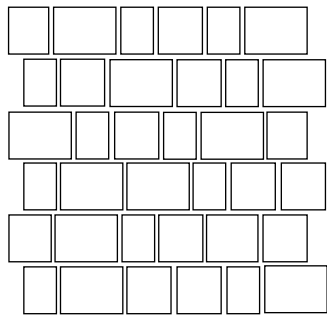
sea blend



earth blend



bay blend



12" x 14 1/4"

- white
- bone
- taupe
- sea blend
- earth blend
- bay blend

## TECHNICAL SPECIFICATIONS

nominal thickness	-	4mm
finish	-	gloss
water absorption	C373	< 0%
frost resistance	C1026	pass
scratch hardness	MOHS	5.5
chemical resistance	C650	pass

VERRE BAY BLEND



VERRE BONE



# ATRAVIDA

GLASS MOSAIC



white



union blend



greige



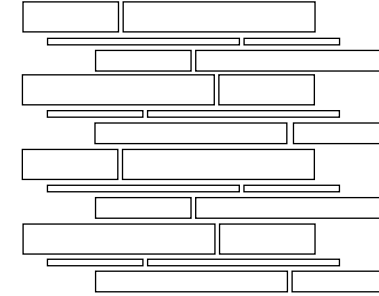
park blend



grey



river blend



12"x14 3/4"

white  
greige  
grey  
union blend  
park blend  
river blend

## TECHNICAL SPECIFICATIONS

nominal thickness	-	4mm
finish	-	gloss
water absorption	C373	< 0%
frost resistance	C1026	pass
scratch hardness	MOHS	5.5
chemical resistance	C650	pass



ATRAVIDA GREY



ATRAVIDA PARK BLEND





NATURAL  
WOOD



# PROSE

## HARDWOOD



harper maple



dickinson maple



eliot hickory



fitzgerald oak



faulkner hickory



thoreau hickory



twain oak



steinbeck oak



frost maple



hemingway oak



melville hickory



hawthorne oak

### TECHNICAL SPECIFICATIONS

width	6"
length	random up to 6' 2"
thickness	1.5mm slice face
edge detail	handcrafted bevel
surface texture	light to medium handsculpted (maple & hickory) wirebrushed (oak)
warranty	20 year commercial 25 year residential



PROSE ELIOT HICKORY

# COMPLEMENTS

## SYLENT MAT

### RUBBER UNDERLAYMENT

a flat, resilient, recycled rubber underlayment to be used directly under most flat floor finishes, yielding exceptional results even under hard surface flooring, over concrete and wood joist construction

#### PERFORMANCE ATTRIBUTES

- Flat, resilient underlayment made from recycled rubber
- For use with tile, wood, LVT, and more
- Made in the U.S.A.
- 48 inch wide rolls in 3 standard thicknesses (2, 5 & 10mm)
- Up to IIC 72, STC 72 with just 2mm under hardwood
- Used directly under all floor finishes; can thin-set tile and stone directly to the product
- Isolates sound and cracks
- Can potentially contribute toward earning 5 LEED points
- IIC lab and field tests available upon request
- Proven to work as specified every time

#### TECHNICAL SPECIFICATIONS

PROPERTY	TEST	SYLENT MAT 2	SYLENT MAT 5	SYLENT MAT 10
nominal thickness	-	2mm	5mm	10mm
dimensions	-	4'x75'	4'x30'	4'x15'
tensile strength	ASTM D412, Die C	80 psi, min.	80 psi, min.	80 psi, min.
elongation	ASTM D412, Die C	50%, min	50%, min	50%, min
tear strength	ASTM D624, Die C	30 ppi, min.	30 ppi, min.	30 ppi, min.
shore a hardness	ASTM D2240	40	40	40
flexibility	ASTM F147	1 factor, max.	1 factor, max.	1 factor, max.
coefficient of friction	ASTM D1894	1.2	1.2	1.2
crack resistance	ANSI 118.12.5.4	high performance	high performance	high performance
density	ASTM D297	0.72g/cm <sup>3</sup> , min.	0.72g/cm <sup>3</sup> , min.	0.72g/cm <sup>3</sup> , min.
compression @ 100 psi recovery	ASTM F36	20%-30%, 85%, min.	20%-30%, 85%, min.	20%-30%, 85%, min.
compression set b, 25% deflection, 158*/22 hrs	ASTM C373	40% max.	40% max.	40% max.

## ACCESSORIES

### SOLID SURFACE ACCESSORIES

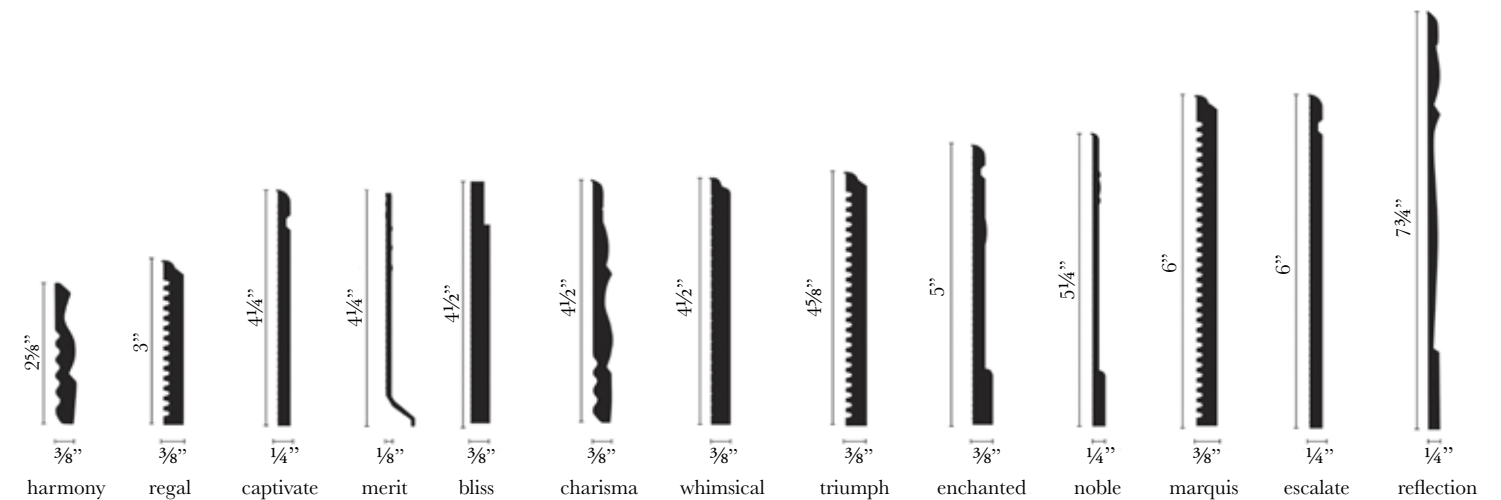
PROFILE	SIZE	STOCK COLORS
threshold	2"x144"	bisque white
windowsill	4"x144" 5"x144" 6"x144"	bisque white
triangle corner shelf		bisque white

### CERAMIC ACCESSORIES

PROFILE	STOCK COLORS
soap dish	bright bisque
paper holder	bright white
towel bars	

### WALL BASE

PROFILE	SIZE	COLORS
vinyl wall/cove base	1/8" gauge x 4 1/4"	contact your rep for colors
base sculptures	see chart below	contact your rep for colors







# TRINITY TILE

115 SW 49TH AVENUE SUITE 105

OCALA, FLORIDA 34474

P: 352-369-0444