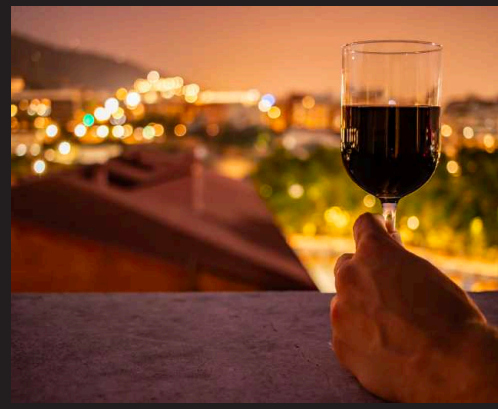


URBAN UNION

501 FAIRVIEW AVE N
SEATTLE, WA





**A BOLD STATEMENT
DAY OR NIGHT**



Join One of the Fastest Growing Neighborhoods in the City

PROPERTY HIGHLIGHTS

- Built-out restaurant / bar space in the heart of South Lake Union with an indoor / outdoor atmosphere offering expansive outdoor seating and a wraparound operable glass storefront.
- Urban Union is a 12 story Class A office tower with 285,000 square feet of office space occupied by Amazon with an estimated 2,100 employees.
- Positioned within a 2-block radius of Google's new SLU campus, Amazon's South Lake Union campus (including the Troy Block), and Onni's 2-block mixed-use project with one million square feet of office.
- Urban Union is located directly off the I-5 Mercer Street exit at the corner of Fairview Avenue North and Republican Street. The site is surrounded by 5,000 residents within a 4-block radius.
- Neighborhood co-tenants include Flatstick Pub, The Collective, Sam's Tavern, Tesla, Republic, Serious Pie, Portage Bay Café, Cactus, Chipotle, SoulCycle, Barry's Bootcamp, Shake Shack, Whole Foods, Sephora, West Elm and more.



\$126k

AVERAGE
HH INCOME

34

MEDIAN AGE

5k

RESIDENTS

13k

DAYTIME POPULATION

75%

POPULATION WITH
ASSOCIATES DEGREE
OR HIGHER

2.2k

RESIDENTIAL UNITS
UNDER CONSTRUCTION



* Demographics based off 4-block
radius from 501 Fairview



98
WALK SCORE




88
TRANSIT SCORE




76
BIKE SCORE