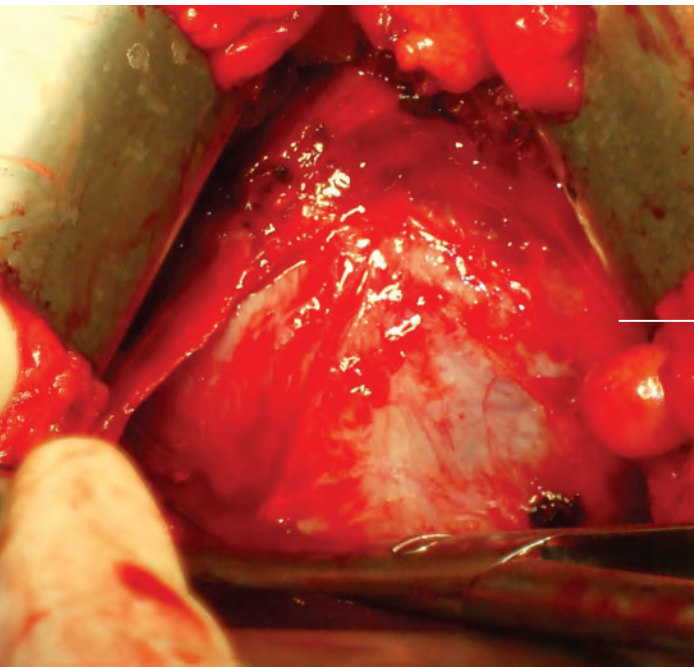


- ABDOMINAL UROLOGY
- HARRIS PERINEAL
- KIDNEY TRANSPLANT
- MINIMAL ACCESS
- LAPAROSCOPIC



Uncompromised Urology Exposure

- The Thompson Retractor provides surgeons with the ability to obtain stable, low profile, and precise retraction for retropubic, flank, and perineal approaches.

Exclusive Frame Features

In use for over 50 years, the Thompson Retractor is the only mechanical retractor to offer one frame for all exposure needs, multi-planed retraction, and unlimited customization.

FRAME BENEFITS

- Quick set up
- Sterile mount rail clamps
- Easy cam lock joints
- Independent lateral arms
- One-piece handles and joints
- Uncompromised Exposure

S-Lock Quick Frame SL90011B
Quick Frame 90011B



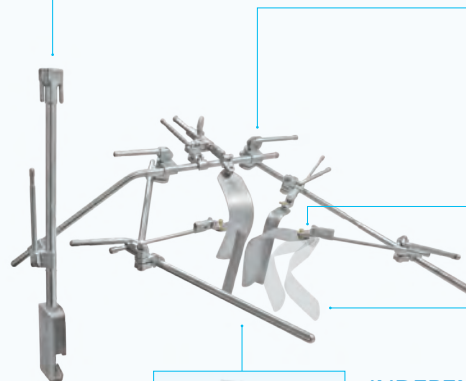
ELITE II RAIL CLAMP

Table mount stabilizes system and prevents blade rise up or retractor shifting. Multiple heights available.



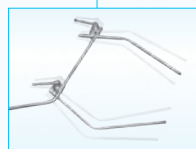
CAM JOINTS

Cam design offers instant lock and release.



S-LOCK® TECHNOLOGY

Reduces unwanted blade swivel and enables precise blade placement.



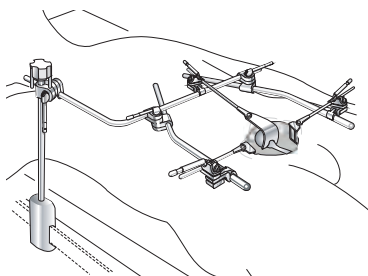
INDEPENDENT FRAME ARMS

Lateral frame arms can be independently adjusted for safer, custom retraction.

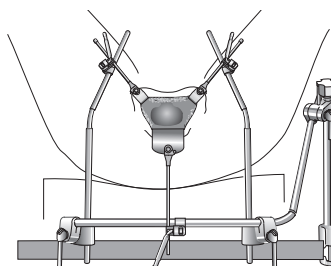
ANGLING TECHNOLOGY

Angling retractor handles allow blades to toe in and out, achieving better exposure while maintaining a low profile operating field.

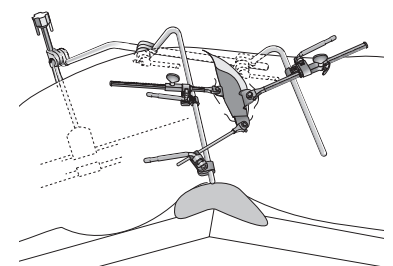
RETROPUBIC PROSTATECTOMY



PERINEAL PROSTATECTOMY



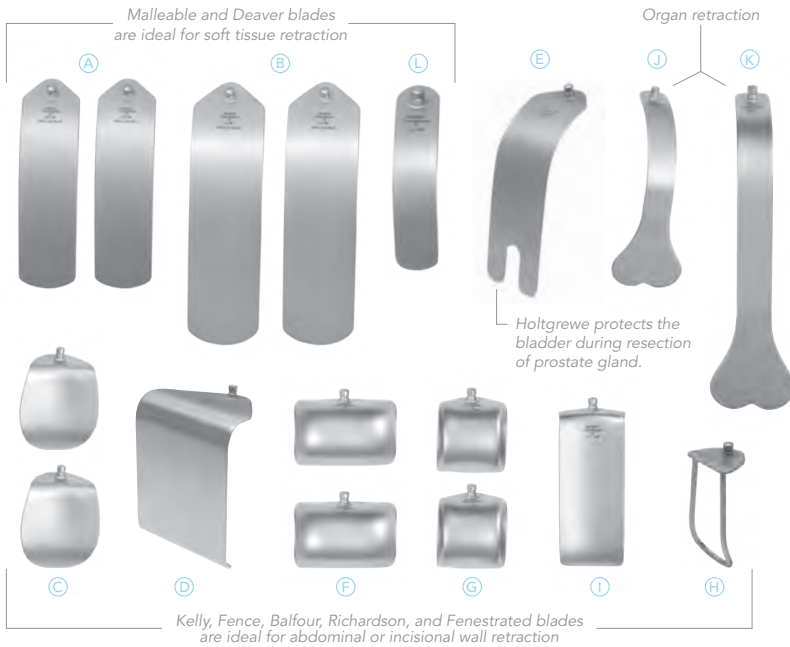
FLANK APPROACH



Urology Blade Kits

Thompson Urology blade kits allow for Uncompromised Exposure in a variety of urological procedures. The following blade kits require the use of an S-Lock® Quick Frame or Quick Frame.

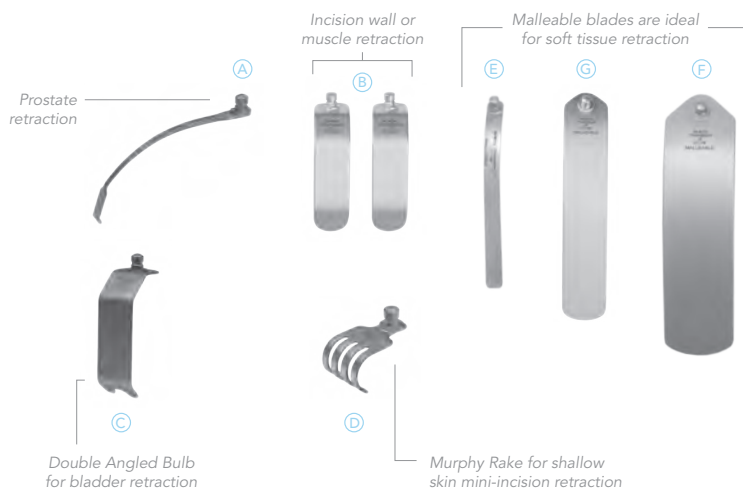
ABDOMINAL UROLOGY BLADE KITS



QTY	ITEM DESCRIPTION	S-SLOCK PART #	INTERCH PART #
Abdominal Urology Blade Kits		SL91025L	91025L
(A)	1 Malleable 51mm x 203mm (2" x 8")	SL46122	46122
(B)	1 Malleable 64mm x 254mm (2 1/2" x 10")	SL46124	46124
(C)	2 Kelly 64mm x 76mm (2 1/2" x 3")	SO46129	46129
(D)	1 Fence 102mm x 152mm (4" x 6")	SO46136	46136
(E)	1 Holtgrewe 60mm x 152mm (2 3/8" x 6")	SL46137	46137
(F)	2 Balfour 76mm x 51mm (3" x 2")	SL46140P	46140P
(G)	2 Balfour 51mm x 51mm (2" x 2")	SL46142P	46142P
(H)	2 Fenestrated 44mm x 89mm (1 3/4" x 3 1/2")	SL46143	46143
(I)	1 Richardson 51mm x 127mm (2" x 5")	SO46151	46151
(J)	1 Harrington 64mm x 152mm (2 1/2" x 6")	SL46160	46160
(K)	1 Harrington 64mm x 203mm (2 1/2" x 8")	SL46163	46163
(L)	1 Deaver 51mm x 127mm (2" x 5")	SL46174	46174

S-Lock blades are denoted with an 'SL' or 'SO' before the part number. S-Lock blades are compatible with S-Lock handles ONLY (also denoted with an 'SL' before the part #). 'SO' blades "swivel only" and do not "lock" like 'SL' blades. S-Lock blade kits must only be used with S-Lock Frames.

HARRIS PERINEAL BLADE KITS

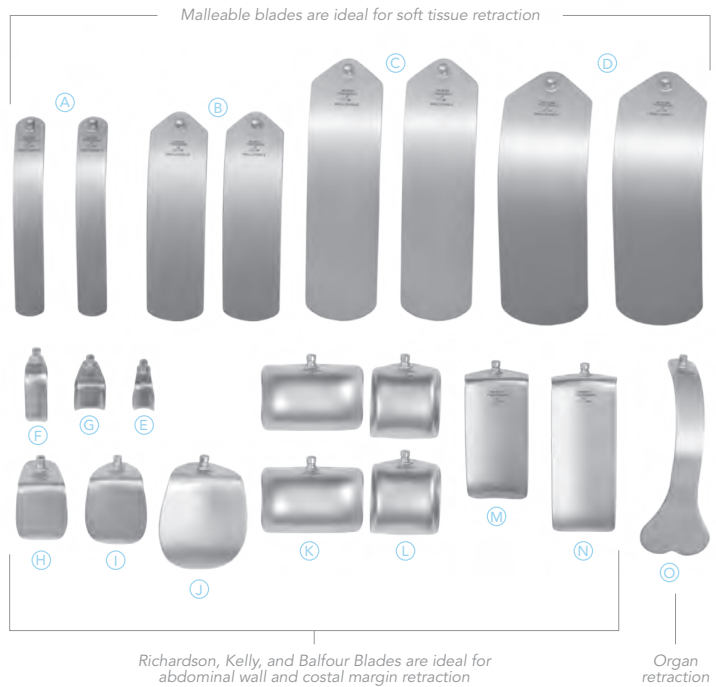


QTY	ITEM DESCRIPTION	S-SLOCK PART #	INTERCH PART #
Harris Perineal Blade Kits		SL91026L	91026L
(A)	1 Prostate Retractor	SL45753AM	45753AM
(B)	2 Double Angled 25mm x 76mm (1" x 3")	SL46660	46660
	2 Double Angled 25mm x 64mm (1" x 2 1/2")	SL46661	46661
	2 Double Angled 13mm x 76mm (1/2" x 3")	SL46662	46662
	2 Double Angled 13mm x 70mm (1/2" x 2 3/4")	SL46663	46663
(C)	1 Double Angled Bulb 25mm x 64mm (1" x 2 1/2")	SL46664	46664
(D)	1 Murphy Blunt 25mm x 16mm (1" x 5/8")	SL46215	46215
(E)	1 Malleable 13mm x 152mm (1/2" x 6")	SL46116	46116
(F)	1 Malleable 51mm x 203mm (2" x 8")	SL46122	46122
(G)	1 Malleable 38mm x 203mm (1 1/2" x 8")	SL46123	46123

S-Lock blades are denoted with an 'SL' before the part number. S-Lock blades are compatible with S-Lock handles ONLY (also denoted with an 'SL' before the part #). S-Lock blade kits must only be used with S-Lock Frames.

KIDNEY TRANSPLANT BLADE KITS

QTY	ITEM DESCRIPTION	S-LOCK PART #	INTERCH PART #
Kidney Transplant Blade Kits		SL91045L	91045L
A 2	Malleable 25mm x 203mm (1" x 8")	SL46118	46118
B 2	Malleable 51mm x 203mm (2" x 8")	SL46122	46122
C 2	Malleable 64mm x 254mm (2 1/2" x 10")	SL46124	46124
D 2	Malleable 76mm x 254mm (3" x 10")	SO46124A	46124A
E 1	Richardson 19mm x 25mm (3/4" x 1")	SL46125	46125
F 1	Richardson 19mm x 51mm (3/4" x 2")	SL46125A	46125A
G 1	Richardson 25mm x 32mm (1" x 1 1/4")	SL46126	46126
H 1	Kelly 38mm x 51mm (1 1/2" x 2")	SL46127	46127
I 1	Kelly 51mm x 64mm (2" x 2 1/2")	SL46128	46128
J 1	Kelly 64mm x 76mm (2 1/2" x 3")	SO46129	46129
K 2	Balfour 76mm x 51mm (3" x 2")	SL46140P	46140P
L 2	Balfour 51mm x 57mm (2" x 2")	SL46142P	46142P
M 1	Richardson 51mm x 102mm (2" x 4")	SL46150	46150
N 1	Richardson 51mm x 127mm (2" x 5")	SO46151	46151
O 1	Harrington 64mm x 152mm (2 1/2" x 6")	SL46160	46160

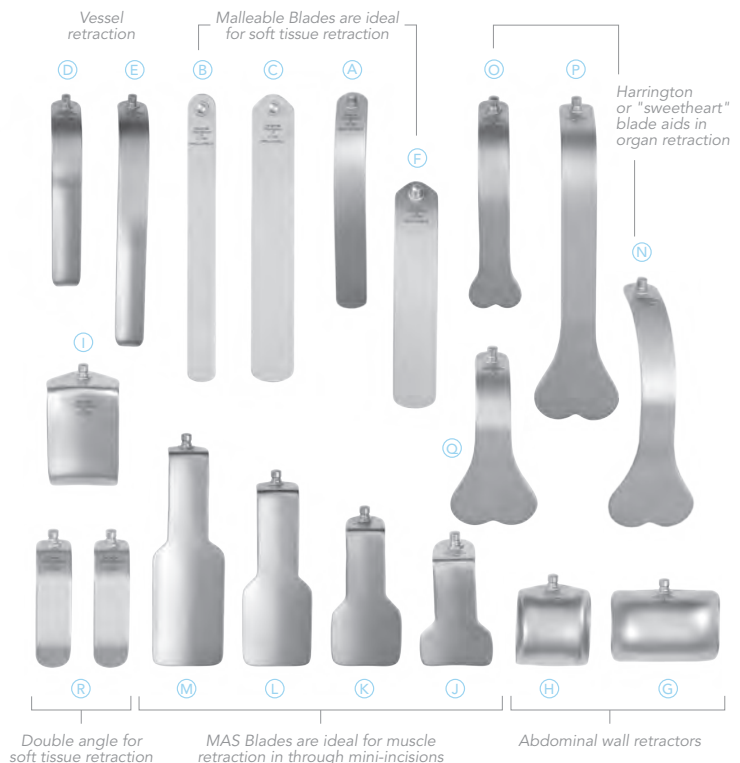


S-Lock blades are denoted with an 'SL' or 'SO' before the part number. S-Lock blades are compatible with S-Lock handles ONLY (also denoted with an 'SL' before the part #). 'SO' blades "swivel only" and do not "lock" like 'SL' blades.

S-Lock blade kits must only be used with S-Lock Frames.

MINIMAL ACCESS BLADE KITS

QTY	ITEM DESCRIPTION	S-LOCK PART #	INTERCH PART #
Minimal Access Blade Kits		SL91051	91051
A 1	Malleable 25mm x 203mm (1" x 8")	SL46118	46118
B 1	Malleable 25mm x 254mm (1" x 10")	SL46118A	46118A
C 1	Malleable 38mm x 254mm (1 1/2" x 10")	SL46118B	46118B
D 1	Conc. Renal Vein 25mm x 140mm (1" x 5 1/2")	SL46119B	46119B
E 1	Conc. Renal Vein 25mm x 191mm (1" x 7 1/2")	SL46119C	46119C
F 1	Malleable 28mm x 203mm (1 1/2" x 8")	SL46123	46123
G 1	Balfour 76mm x 51mm (3" x 2")	SL46140P	46140P
H 1	Balfour 51mm x 51mm (2" x 2")	SL46142P	46142P
I 1	Richardson 51mm x 76mm (2" x 3")	SL46154	46154
J 1	MAS Richardson 51mm x 76mm (2" x 3")	SO46155	46155
K 1	MAS Richardson 51mm x 102mm (2" x 4")	SO46156	46156
L 1	MAS Richardson 51mm x 127mm (2" x 5")	SO46157	46157
M 1	MAS Richardson 51mm x 152mm (2" x 6")	SO46158	46158
N 1	Harrington 64mm x 152mm (2 1/2" x 6")	SL46160	46160
O 1	Harrington 38mm x 127mm (1 1/2" x 5")	SL46162P	46162P
P 1	Harrington 64mm x 203mm (2 1/2" x 8")	SL46163	46163
Q 1	Harrington 64mm x 102mm (2 1/2" x 4")	SL46165	46165
R 2	Double Angled 25mm x 76mm (1" x 3")	SL46660	46660

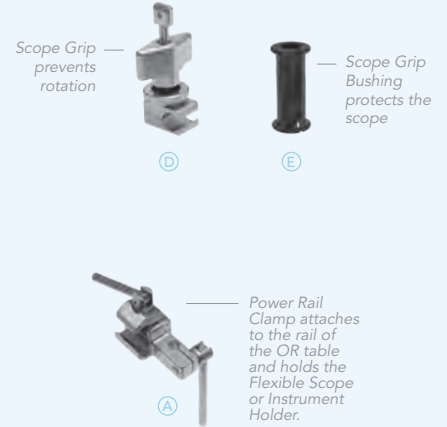


S-Lock blades are denoted with an 'SL' or 'SO' before the part number. S-Lock blades are compatible with S-Lock handles ONLY (also denoted with an 'SL' before the part #). 'SO' blades "swivel only" and do not "lock" like 'SL' blades.

S-Lock blade kits must only be used with S-Lock Frames.

Laparoscopic Systems and Accessories for Urology Surgery

All of our laparoscopic systems and accessories may be used for laparoscopic urology surgery.



LAPAROSCOPIC SYSTEM

QTY	ITEM DESCRIPTION	PART #
	Laparoscopic System	80030*
(A) 2	Power Rail Clamp	41950
(B) 1	Laparoscopic Instrument Holder	42139N
(C) 1	Flexible Scope Holder	42133CN
(D) 1	Scope Grip	33154
1	Scope Grip Bushing 5mm	42136F
(E) 1	Scope Grip Bushing 10mm	42136T
1	Instrument Case	50000G

*Includes setup for both the Instrument Holder and Scope Holder

FLEXIBLE SCOPE HOLDER SYSTEM 80032**

**Includes setup for the Flexible Scope Holder only

LAPAROSCOPIC INSTRUMENT HOLDER SYSTEM 80031***

***Includes setup for the Instrument Holder only



DUO HEAD

3mm/5mm/10mm 42160N



NATHANSON HOOKS

Small 5mm	42200
Medium 5mm	42201
Large 5mm	42202
Small 6.5mm	42203
Medium 6.5mm	42204
Large 6.5mm	42205

Elite II Rail Clamp Setup Options

The Laparoscopic Instrument Holder and Flexible Scope Holder can be used individually with an Elite II Rail Clamp with one joint, or simultaneously with an Elite II Rail Clamp with two joints.



Elite II Clamp with 1 Joint 18" 41902AC
Laparoscopic Instrument Holder for Elite 42139E



Elite II Clamp with 1 Joint 18" 41902AC
Flexible Scope Holder for Elite 42133CEN



Elite II Clamp with 2 Joint 18" 41903AC
Flexible Scope Holder for Elite 42133CEN
Laparoscopic Instrument Holder for Elite 42139E



10170 East Cherry Bend Road
Traverse City, Michigan 49684
phone: 231.922.0177
fax: 231.922.0174

www.thompsonsurgical.com