



walraven

USA – Product Presentation

August 2020



Who is Walraven?



- Family owned enterprise – 4th generation CEO
- Established in the Netherlands in 1942
- Market leader in pipe support in Europe
- Largest range of pipe support in the industry



Key figures

- 1,500+ employees
- 20+ sales locations worldwide
- 12 production facilities

Walraven USA

The background of the slide is a close-up, slightly blurred image of the American flag, showing the red and white stripes and the blue field with white stars.

- Sell in all 50 states
- 19 independent sales rep organizations
- 3 warehouses and 1 production plant
- State-of-the-art machinery

Why - Deliver Value for the Contractor

- Save labor
- Quicker installation
- Safer installation
- Less SKUs
- Engineered system
- Noise reduction
- Better corrosion resistance
- Solve installation issues – ex: PP/PEX
- **Improve profitability for Contractor**



Target Markets

- Upscale residential
- **Multi unit housing**
- **Mixed use building**
- **Hospitality**
- **Hotels**
- **Hospitals**
- **Schools**
- **University dorms**
- Airports
- Stadiums/arenas



Select Product Range

- Strut & Cushion Clamps - W Series
- Strut - RapidStrut®, Medium Strut – RapidRail®, Light Strut – WM0
- Hanging Clamps - BISMAT®
- Plastic Clamps and Support - starQuick®
- In-Wall Product Line
- PP and PEX support – pipe reinforcement, metric, lined, expansion etc...



Strut Clamps

W Series



W Series Strut Clamps

- W1000: 1/2 to 2"
 - 3-way clamp
 - Strut, wall, threaded rod
 - For EMT and steel pipe
- W2000: 1/4 to 2-1/8"
 - For copper pipe
- W5000: 3/8 to 2"
 - For plastic pipe
 - Expansion & fixed point
- W6000: 1/4 to 1-5/8"
 - Pre-insulated
 - Insulated block options: 3/8, 1/2 & 3/4"
 - 2 materials – hard and soft



Walraven W Series - Video [CLICK HERE TO WATCH VIDEO](#)



Strut & Cushion Clamp USPs

- One piece design
- No loose parts
- Quarter turn & ready
- 3 way use – direct to wall, in strut and hanging with threaded rod
- Vibration and noise insulation
- Rubber lined separates metal pipes from clamps
- ZnMg finish – 600 hours salt spray
- One clamp fits multiple pipe sizes
- 3 way screw
- UL approval



Strut Systems & Accessories

Standard Strut, Medium Strut and Light Strut



Strut – RapidStrut®

- 1-5/8" x 2" size strut
- Able to use both sides of strut
- Accessories for quick installation
- No assembly and no loose parts
- Great for pre-fab and frames
- Connect BISMAT® clamps
- Walraven DS5 Strut - 14 gauge
 - Unique strut profile
 - Use on both sides



Strut & Medium Strut Accessories

- Slide Nut
- Studded Slide Nut - Hammerfix: 1½ & 3"
- Wall Plate / Cantilever
- Rail Connectors
 - 45°
 - 90°
 - Tee
 - Cross



Medium Strut – RapidRail®

- 1-3/8" x 3/4" size strut 16 gauge
- Able to use both sides of strut
- Walraven medium strut/ RapidRail® WM15
 - Unique strut profile
 - Use on both sides
- For all medium strut applications
- Accessories for quick and easy installation
- No assembly “ready-to-use”
- No loose parts
- Saves up to 40% installation time
- Easily connect our BISMAT® and Bifix® clamps

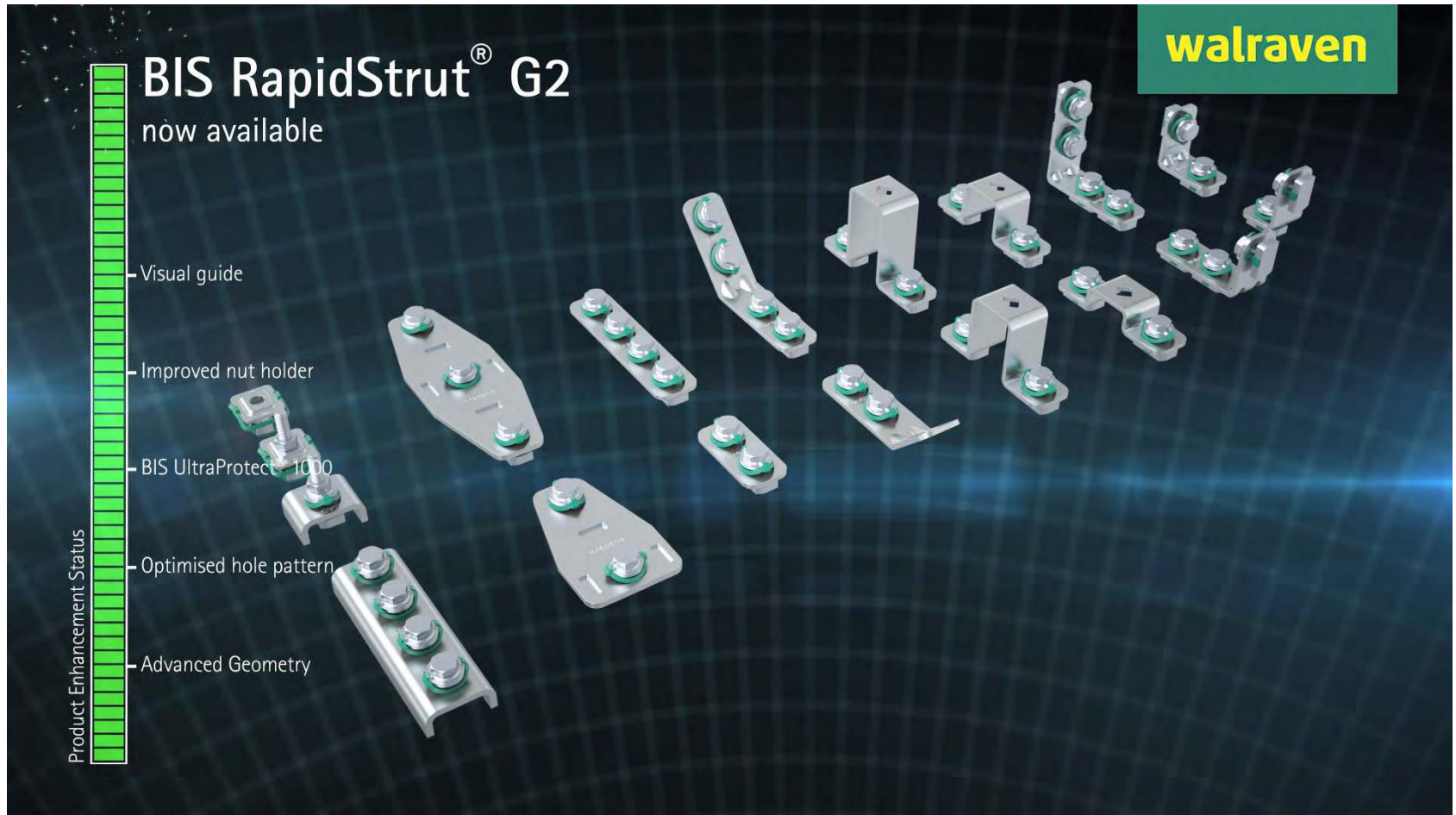


Light Strut – WM0

- 1-1/16 x 23/32” approximately 18 gauge
- For all light strut, in-wall and overhead applications
- 6 versions for custom lengths – 8”, 12”, 18”, 22”, 32” & 7’
- Portable strut cutter available
- Compatible with medium strut (RapidRail®) accessories
- Connects all Walraven clamps
 - BISMAT®
 - starQuick®
 - Rabbit



RapidStrut® & Accessories - Video [CLICK HERE TO WATCH VIDEO](#)



Rooftop Support - BIS Yeti®

- Modular, non-slip, anti-vibration rooftop support
- Vertical or horizontal applications
- Yeti® 130 fits 1-5/8 x 13/16" strut
- Yeti® 335 fits 1-5/8 x 1-5/8" strut and DS5
- Yeti® 480 fits 1-5/8 x 1-5/8" strut and DS5
 - Adjustable up to 7°
 - Flat and pitched roofs



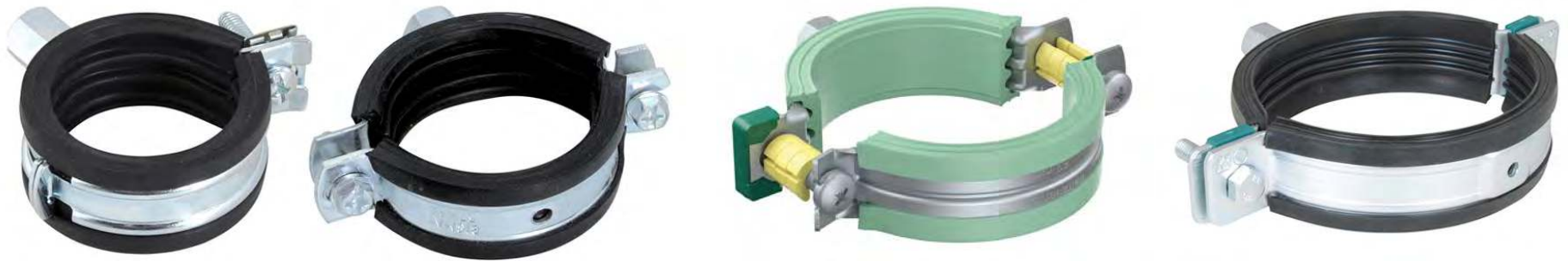
Hanging Clamps

BISMAT® and Bifix®



BISMAT® / Bifix® Rubber Lined Clamp Series

- BISMAT® Flash: 1/2 to 2" (replaced BISMAT® 2000)
 - For metal pipe, closes with one hand
- BISMAT® 2000: 2 to 4"
 - For metal pipe with quick locking system
- Bifix® 5000 G2: 1/2 to 6" (replaced BISMAT® 5000)
 - For plastic pipe, removable space washers for sliding/anchoring
- BISMAT® HD1501: 3/4 to 12"
 - Heavy duty clamp with 2 locking bolts





walraven

BISMAT® / Bifix® Rubber Lined Clamp USPs

- Quick & safe installation
- Fire tested & plenum rated
- Vibration reduction & noise damping
- Separation of metals
- Plastic & metal pipes
- Corrosion protection - BIS UltraProtect® 1000 (salt spray)

BISMAT® Clamp mounting options:

- Slide Nut
- Studded Slide Nut – Hammerfix
- Hanger and Quick Hanger Bolt



Plastic Clamps & Support

starQuick®, Rabbit and Grommet



starQuick® Clamps

- Product range: 1/4 to 4" CTS and IPS
- 1/4 to 1-1/4" interlock
- 1/4 to 2" fits all starQuick® accessories
- 1/4 to 4" can be mounted directly to wall
- Clamps attach to strut, medium strut and light strut
- Plenum rated standard/ fire rated versions available



starQuick® Accessories



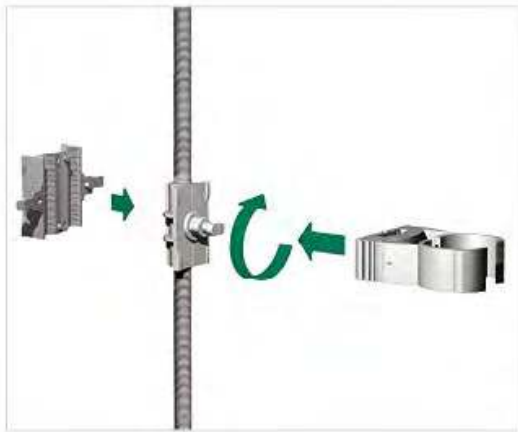
Duo wall plate



Connectable



Self tapping screw



Threaded rod adapter



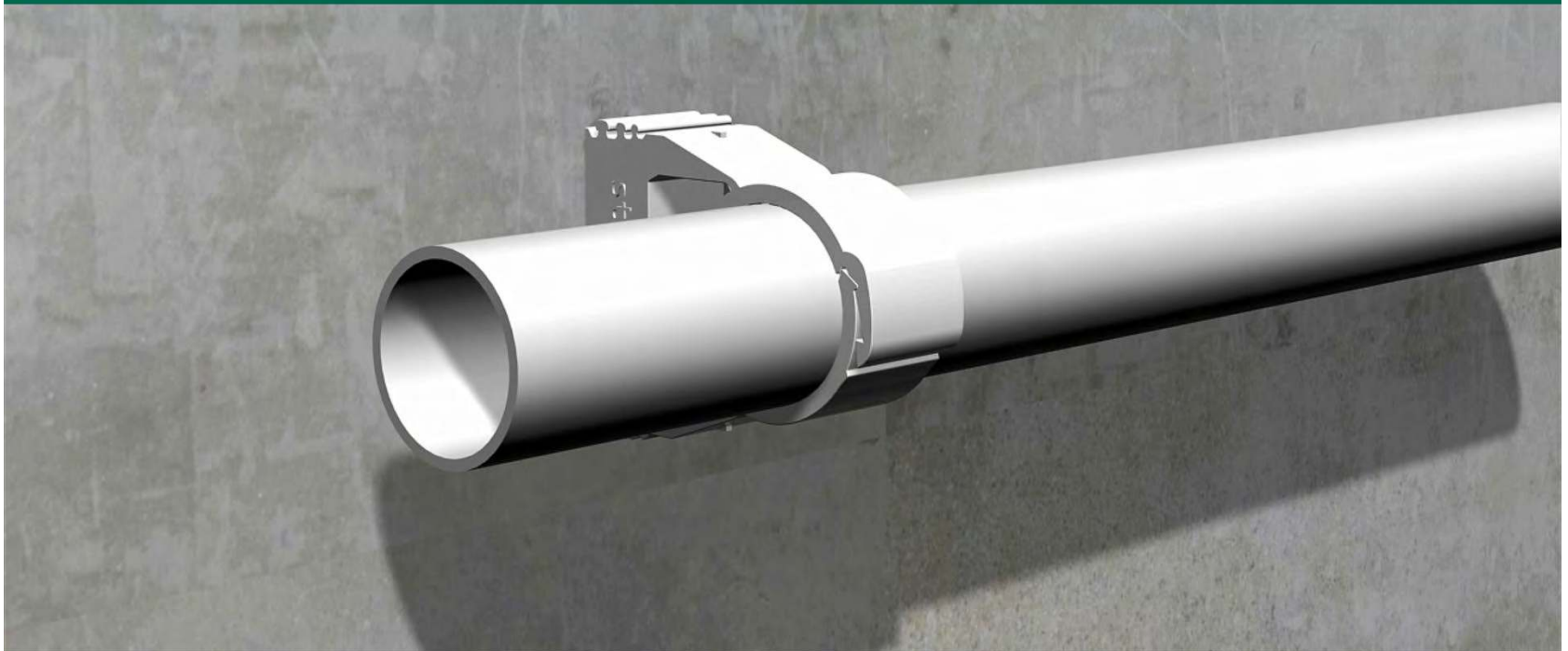
Strut adapter



Silent nut #8 - 32

BIS starQuick®

walraven



starQuick® USPs

- Use with plastic, steel and copper pipe
- One-part clamp that closes by applying pressure to the pipe
- One click for sliding application, two clicks for fixed application
- For indoor and outdoor use
- Patented profile to connect several clamps to each other
- Material: modified nylon PA6
- Resistant to UV, aging, oil and gasoline
- Corrosion-free, recyclable and halogen free
- Plenum rated - tested to ASTM E-84
- Strut, threaded rod and noise reduction accessories



Rabbit Clamps: ½ - 2”

- Combines 2 clamps in 1:

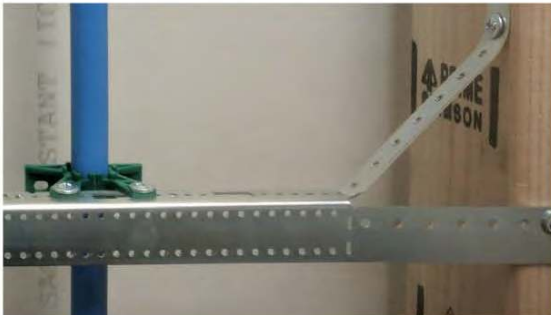


- 6 pipe sizes in 4 clamps

- ½”
- ¾”
- 1-¼” with 1” insert
- 2” with 1-½” insert



- Screws direct on bracket, wall, stud or ceiling
- Plenum rated standard/ fire rated versions available
- Noise reduction version with rubber insert ½” – 1”
- Patented



Grommet

- Can be mounted on wood or metal studs
- Fits round and rectangular stud holes
- Two sizes one part: fits 1/2" and 3/4" CTS size
- Plenum rated standard/ fire rated version available
- Fits with 1/2" PEX bend
- Excellent noise reduction - 14dB



In-Wall & Overhead Support



New In-Wall & Overhead Products



In-Wall & Overhead Solutions Video [CLICK HERE TO WATCH VIDEO](#)

walraven

In-Wall Brackets

- **MPTS – Multi-Purpose Telescoping Support**
 - Strongest in-wall bracket recommended for commercial installations
 - Adjustable: 12 - 20” and 18 - 26”
- **RSWB – Rapid Sliding Wall Bracket**
 - Universal bracket for commercial and residential installations
 - Adjustable, telescoping bracket 12 - 20” and 16 - 26”
- **HAWB – Heavy Angled Wall Bracket**
 - Strong fixed bracket for any in-wall installation
 - Fixed bracket mounts on 16” or 24” stud spacing
- **LAWB – Light Angled Wall Bracket**
 - Perfect for light duty and residential installations
 - Fixed bracket mounts in 16” or 24” stud spacing



Stub-outs

■ Copper and CPVC

- 1/2" and 3/4" stub-out clamp (also for 3/4" PEX)
- Adjustable for RSWB and MPTS
- Fixed for MPTS, HAWB and LAWB

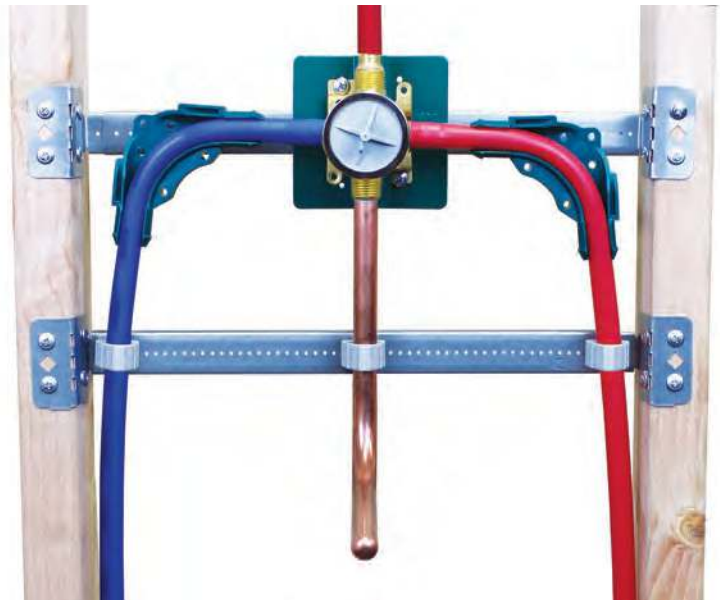
■ PEX

- Supports 1/2" PEX pipe
- Adjustable for RSWB and MPTS
- Fixed for MPTS, HAWB and LAWB



Universal Shower Valve Plate

- Fits:
 - #1 Delta, American Standard, Moen and Kohler
 - #2 ProFlow and PriceFister
- Provides a sturdy, fast and professional installation
- Stepless adjustable for pre-fab to save time and money



Product Kits

■ RSWB

- RSWB3 (12 - 20") & RSWB4 (16 - 26") with Universal Shower Valve Plate and screws
- RSWB3 with 2 PEX stub-out brackets 1/2"
- RSWB3 with 2 Copper/CPVC stub-out brackets 1/2"

■ HAWB

- HAWB1 (12 - 20") & 2 (18 - 26") with 2 PEX stub-out brackets 1/2"
- HAWB1 & 2 with 2 Copper/CPVC stub-out brackets 1/2"

■ LAWB

- LAWB1 (12 - 20") & 2 (18 - 26") with 2 PEX stub-out brackets 1/2"
- LAWB1 & 2 with 2 Copper/CPVC stub-out brackets 1/2"



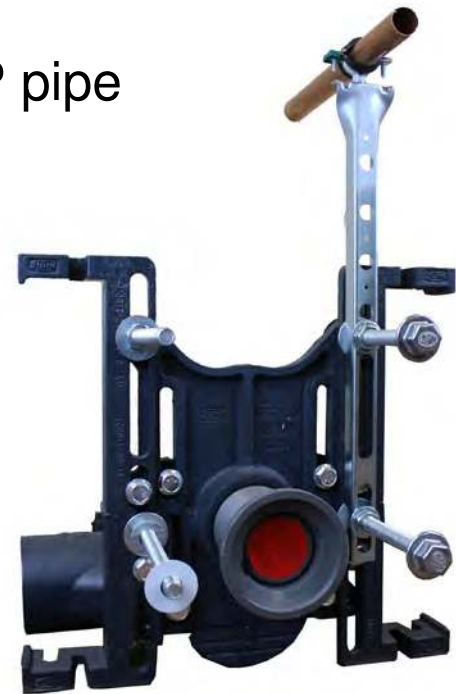
Overhead Pipe Support Solutions

- Light Strut WM0
 - 6 versions for custom lengths – 8”, 12”, 18”, 22”, 32” & 7’
- MPHS
 - Several lengths of strut – 20”, 30” & 40” with adjustable insert
 - 12 - 20”, 22 - 30” and 32 - 40”
- Cantilever
 - Mounts to wall or ceiling
- Cast-in Anchor
 - Mounts to plywood before pouring concrete deck



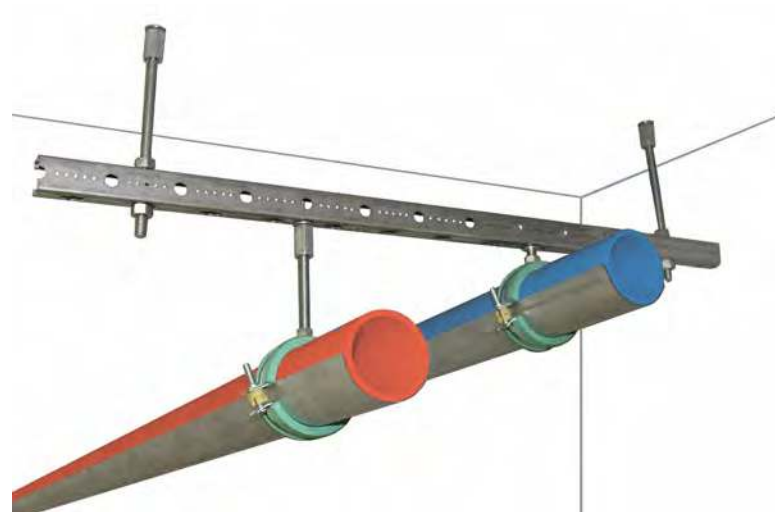
Flush Valve Support Bracket

- Pre-assembled and ready to use
- Mounts directly to toilet carrier (ex Zurn, JR Smith, Mifab)
- Includes our Bifix® rubber lined clamp
- No sweating of copper pipes needed
- Adjustable – vertical and horizontal
- Can be used with copper, PEX, CPVC and PP pipe
- One product replaces five



Walraven In-Wall & Overhead Pipe Support USPs

- Engineered solutions
- Many installation options
- PEX, CPVC, Copper
- Adjustable – 1 to 7'
- Noise reduction – up to 15dB
- Quicker install
- Professional installations
- Increases profitability



PP & PEX Support



PP Pipe Support

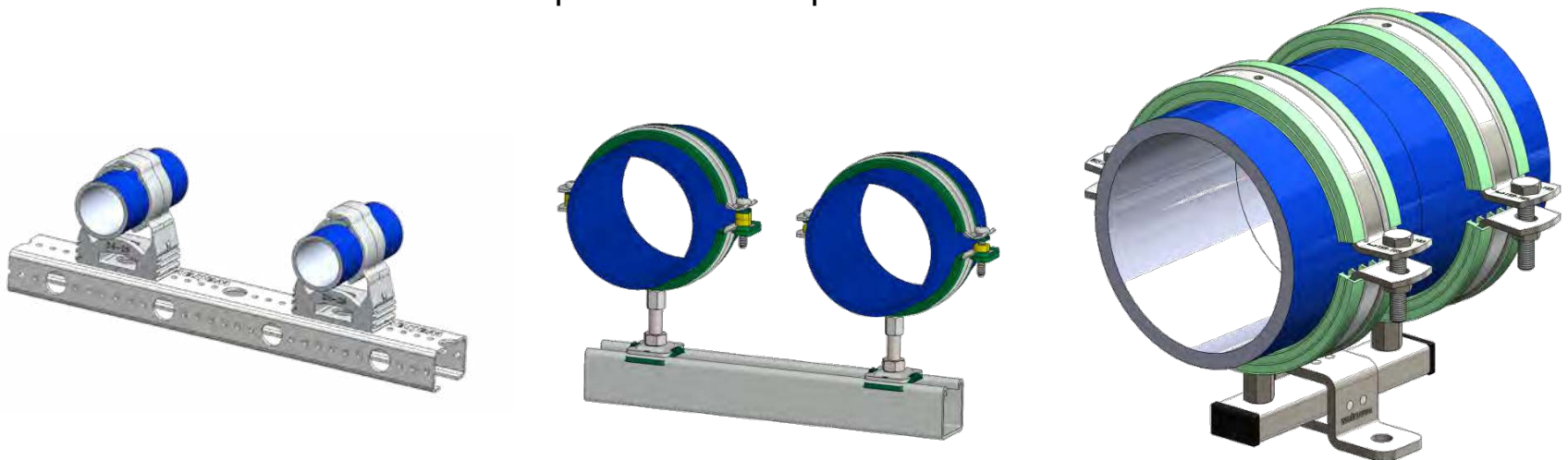
■ Horizontal

■ Sliding

- 16 - 63mm – starQuick®, W Series and Bifix® 5000
- 75 - 315mm – HD Clamp and expansion device
- 355 - 630mm – Split Band Clamp (brackets with spacers) and Console

■ Fixed

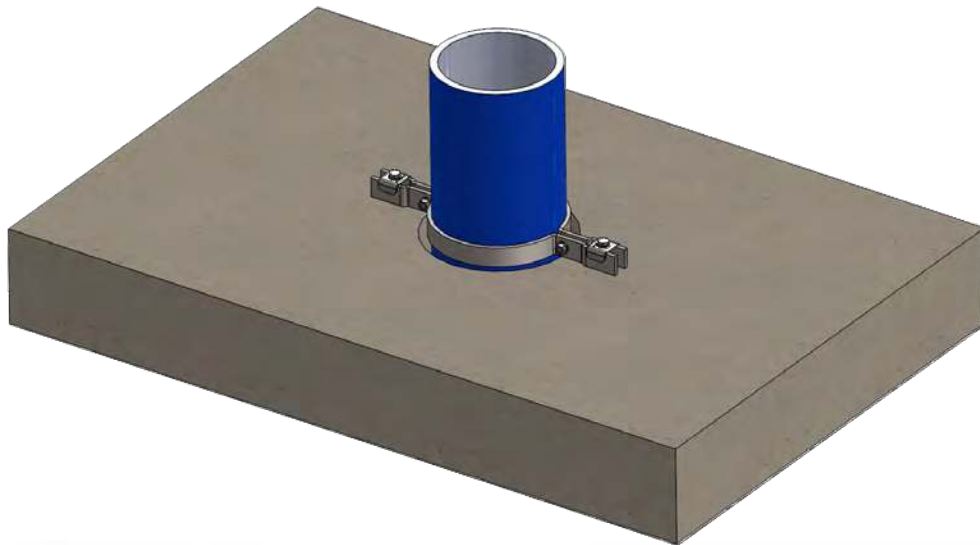
- 16 - 63mm – starQuick®, W Series and Bifix 5000®
- 75 - 315mm – HD Clamp and Console
- 355 - 630mm – Split Band Clamp and Console



PP Pipe Support

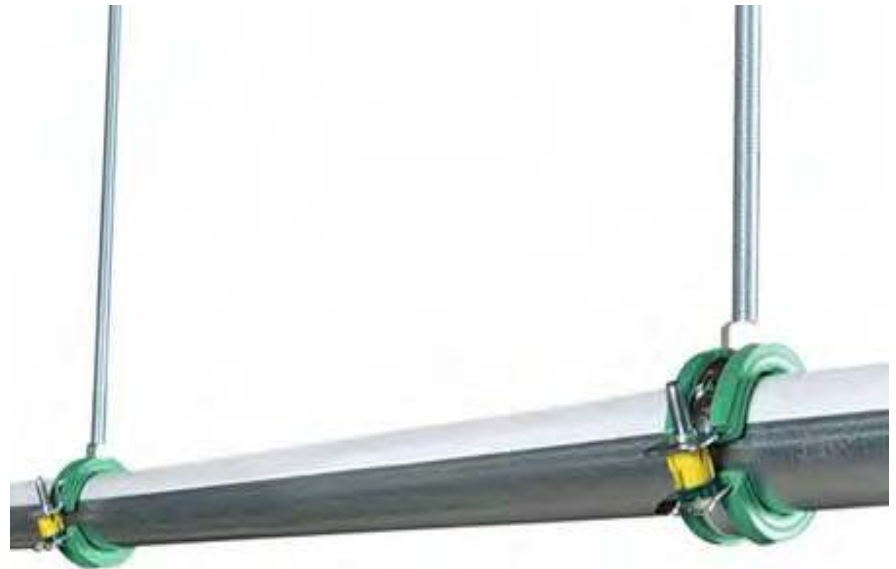
■ Vertical

- 40 - 315mm - Riser Clamp
 - Optional Riser Pads
- 90 - 315mm
 - 2 HD Clamps and Console
- 355 - 630mm
 - 2 Split Band Clamps and Console



Pipe Reinforcement

- Pipe sizes
 - PEX ASTM : 1/2 to 3–1/2”
 - PP Metric : 20 to 355mm
- Plenum rating – ASTM E-84
- Improve hanger spacing
 - 1/2” & 3/4” from 32” to 72”
 - 1” to 3” from 48” to 96”
- Support from:
 - Standard Strut
 - Medium strut
 - Light strut
- Use with Bifix[®] 5000 G2 Clamp
 - Allows for expansion and contraction



Follow Walraven on Social Media

- LinkedIn: <https://www.linkedin.com/company/walraven-usa/>
- YouTube: <https://www.youtube.com/user/walravenus>
- Instagram: <https://www.instagram.com/walravenusa/>
- Facebook: <https://www.facebook.com/walraven.usa/>
- Twitter: <https://twitter.com/walravenusa>



Questions
