



Blazer Docking Station

User Manual



shintaro.com.au



shintaro

Table of contents

Safety instructions	1
Copyright	1
Trademarks	1
Introduction	2
Features	2
Package contents	2
System requirements	3
Product overview	4
- Front	4
- Rear.....	5
Connection	6
- Dual display docking station.....	6
- Single display docking station	7
Installation	8
- For Windows [®] 7/ Windows [®] 8 user	8
- For Windows [®] Vista user	11
- For Windows [®] XP user	13
Verifying the driver	14
Display configuration	15
- Utility settings	15
- Multi-monitor configuration	18
Audio configuration	23
Uninstall the driver	24
- For Windows [®] 7/ Windows [®] 8 user	25
- For Windows Vista [®] user	26
- For Windows XP [®] user	27
Specification	28
Regulatory compliance	29
- FCC conditions.....	29
- CE	29
- WEEE information	29

Before attempting to connect, operate or adjust this product, please save and read the User's Manual completely. The style of the product shown in this User's Manual may be different from the actual unit due to various models.

Safety instructions

Always read the safety instructions carefully:

- Keep this User's Manual for future reference
- Keep this equipment away from humidity
- If any of the following situation arises, get the equipment checked by a service technician:
 - The equipment has been exposed to moisture.
 - The equipment has been dropped and damaged.
 - The equipment has obvious sign of breakage.
- The equipment has not been working well or cannot get it to work according to the User's Manual.

Copyright

This document contains proprietary information protected by copyright. All right are reserved. No part of this manual may be reproduced by any mechanical, electronic or other means, in any form, without prior written permission of the manufacturer.

Trademarks

All trademarks and registered trademarks are the property of their respective owners or companies.

Introduction

The Shintaro Blazer Docking Station is a unique design for a computer that has extra connectivity demands. Through the docking station, you can extend the connection of a computer to more USB peripherals, Ethernet network, speaker and microphone using only one USB port on your computer.

This docking station is built-in USB 3.0 ports which mean you can enjoy the super speed data transmission between USB peripherals. Besides, this product is fully compliant with the USB 1.1/2.0 specification. Your previous USB 1.1/2.0 devices can continue to function as usually.

The video output is another feature. With the DVI (and HDMI[®] Dual Head Docking Station model only) port(s), you can connect more monitor, LCD or projector. The connected monitor can be configured to either mirror your primary screen, or extend the Window desktop allowing visibility of more applications at the same time. No more stacking windows within the confines of a single display.

As to the housing, aside from the impressive sailboat-like appearance, the upright design of the body helps to spare your desktop space. Most peripherals are connected behind while two USB ports and audio outputs are implemented on the front panel for easier accessibility. An industry standard security lock is also provided for anti-theft purpose.

Enhanced expansion capability plus the stylish appearance, surely this docking station with video is the most versatile accessory that also complements your home or office space.

Features

- Compatible with USB 3.0/2.0 specification
- Resolution up to 2048x1152
- Support audio 2.1 channel
- Support Gigabit Ethernet
- Support HDMI[®] 1.3 (Dual Display Model only)

Package contents

- Docking Station x1
- USB 3.0 Cable x1
- Power Adapter x1
- CD (Driver and User's Manual) x1
- Quick Installation Guide x1

System requirements

The minimum requirements for the PC are:

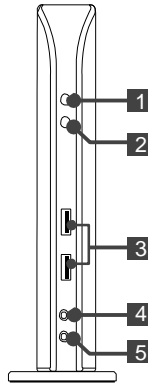
- 1.6 single core CPU or higher processor clock. Intel Pentium/Celeron family, or AMD K6/Athlon/Duron family, or compatible processor
- 1GB of RAM
- USB 2.0/3.0 port
- 30MB of available disk space
- Windows[®] XP 32-bit, Windows[®] Vista 32/64-bit, Windows[®] 7 32/64bit, Windows[®] 8 32/64bit.

To play DVD on the extra connected monitor through docking station, in addition to the requirements above, the following requirements should also be met:

- With dual core CPU at 2.0 GHz processor clock

Product overview

Front

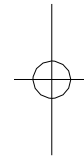
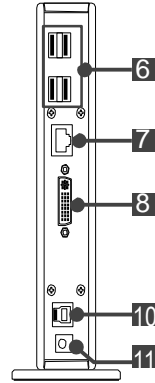
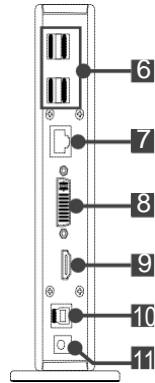


- 1 Power indicator:** Lights up when the power is on.
- 2 USB indicator:** Lights up when a USB device is plugged into this unit.
- 3 USB 3.0 ports:** Connect to USB 3.0 devices.
- 4 Speaker jack:** Connect to a speaker or earphone.
- 5 MIC jack:** Connect to a microphone.

Rear

Dual Display
Docking station

Single Display
Docking Station



6 **USB 2.0 ports:** Connect to USB 2.0 devices.

7 **RJ45 port:** Connect to an Ethernet.

8 **DVI connector:** Connect to a DVI monitor or projector.

9 **HDMI connector:** Connect to a HDMI monitor or projector.

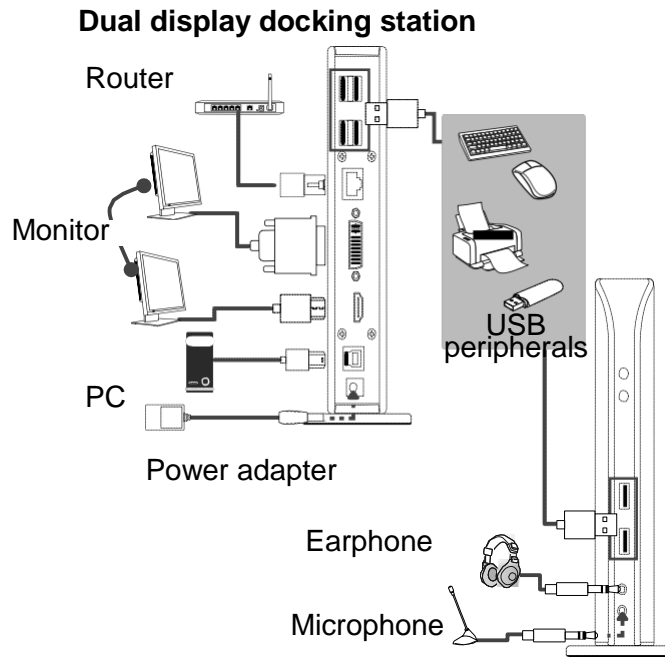
Note: This function provided only on the model of Dual Head Docking Station.

10 **USB 3.0 port (Type B):** Connect to a computer.

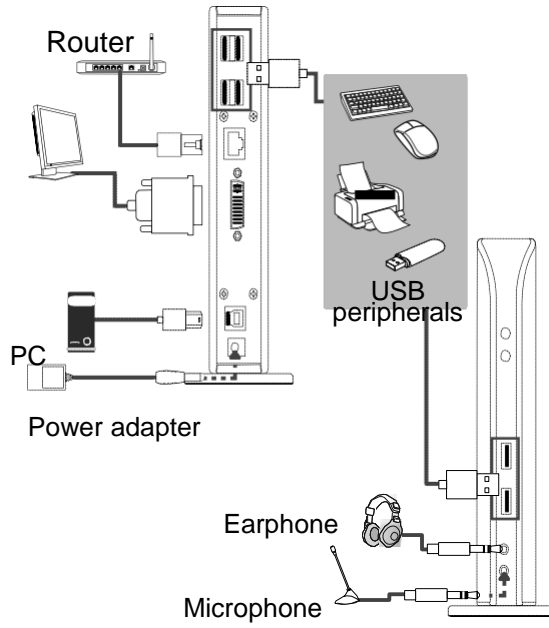
11 **Power jack:** Connect to the power adapter.

Connection

To connect the USB peripherals, Ethernet, speaker and microphone, follow the illustrations below to connect the corresponding connectors.



Single display docking station



Installation



Caution: DO NOT connect the docking to a computer before installing the provided driver.

Note that the following strings and screen shots shown on this user's manual may vary slightly from each operation.

For Windows[®] 7/ Windows[®] 8 user

1. Insert the supplied driver CD into a computer's CD/DVD- ROM.
2. Click <**Run Setup.exe**> to start the installation.

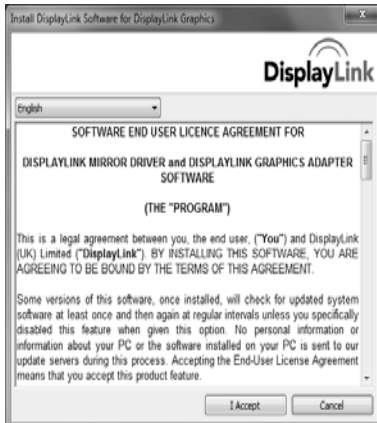


Note:

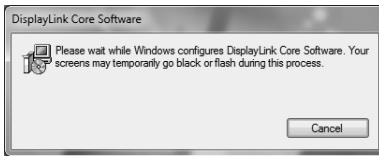
If the **AutoPlay** does not appear automatically, locate and double-click on the **Setup.exe** file in the driver folder to launch the setup.

Enter the administrator password and then click **<Yes>** to start the installation if a **User Account Control** dialog box appears.

3. Click **<I Accept>** for the next step.

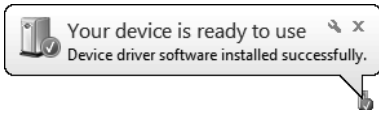


4. Be patient with the installation procedure, it may take a while.



5. Connect the Docking Station to a computer after the driver installation is completed.
For connection details, refer to the chapter of **Connection**.

6. When the operating system detects the adapter, the reminder message will appear on the system tray as below.



For Windows® Vista user

1. Insert the supplied driver CD into a computer's CD/DVD- ROM.
2. Click <**Run Setup.exe**> to start the installation.



Note:

- If the **AutoPlay** does not appear automatically, locate and double-click on the **Setup.exe** file in the driver folder to launch the setup.
- Enter the administrator password and then click <**Allow**> to start the installation if a **User Account Control** dialog box appears.

3. Click <**I Accept**> for the next step.



4. Be patient with the installation procedure, it may take a while.



5. Connect the Docking Station to a computer after the driver installation is completed. For connection details, refer to the chapter of **Connection**.

6. When the operating system detects the adapter, the reminder message will appear in the **Windows System Tray** as below.

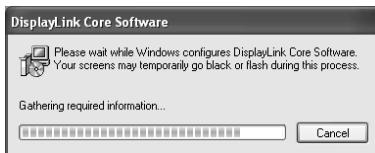


For Windows® XP user

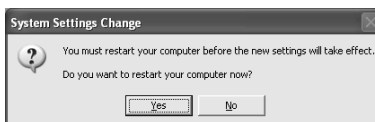
1. Insert the supplied driver CD into a computer's CD/DVD- ROM.
2. Click <I Accept > for the next step.



3. Be patient with the installation procedure, it may take a while.



Note: Click <Yes> to restart or <No> to manually restart later, if a prompting to restart computer message appears.



4. Connect the Docking Station to a computer after the driver installation is completed. For connection details, refer to the chapter of **Connection**.

Verifying the driver

To verify the driver of the adapter, follow the step below to open the **Device Manager** on Windows operating system.

1. Following the path as below to open the device manager Windows[®] 7/Windows[®] 8:

Control Panel\System and Security\System\Device Manager

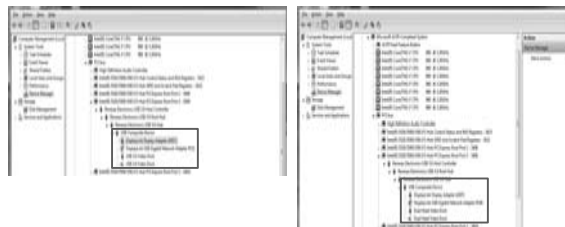
Windows[®] Vista: **Control Panel\System Maintenance\Device Manager**

Windows[®] XP: **Control Panel\System\Hardware\Device Manager**



2. A string similar to **DisplayLink.. Adapter** device should be listed.

Docking Station

Dual Head Station



The screen shot above is demonstrated by Windows[®] 7 and might be varied slightly for each operation system.


Note: If there is a  (question) or  (exclamation) mark next to that item, then the driver is not properly installed. Please delete the item, unplug the adapter and repeat the installation steps.

Display configuration

Note that the following screen shots in this section are using Windows® 7 operating system. It may not match your operating system but the definitions of buttons, tabs and menus are the same.

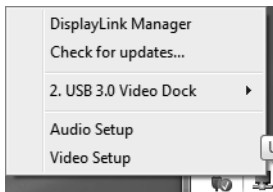
Utility settings

The supplied utility allows configuring the display mode, screen rotation, screen resolution, and physical arrangement of your monitors.

1. Click <  (utility icon) > in the **Windows System Tray**.

Note: The  may be hided in the **Windows System Tray**. Click <  (arrow icon) > to bring up more icons if it happens.

2. Select a preferred option, and then click it using mouse.



Description of the settings

Option	Description
Displaylink manager	Enable the Windows screen resolution page.
Check for updates	Check the latest driver and download if available
USB3.0 Video Dock/Dual Head Video Dock(*The actual item is depending on the model)	
Screen Resolution	Click to select an available resolution. Note that this function is invalid in mirror mode, as the resolution is defined as the resolution of the primary monitor
Screen Rotation	Rotate the screen according to the desired orientation
Extend	Extend the screen according to the desired orientation
Extend to	The cursor can extend to desired screen via left/right/above/below way moving
Set as Main Monitor	Set this screen to the main screen
Notebook Monitor Off	Switch the add-on monitor to the main display and turn off the screen of the laptop. Note:This function works only when one add-on monitor is connected. This option will also only appear on laptop.
Mirror	Duplicate the primary monitor to the monitor which connects with the adapter
Off	Turn off the monitor
Optimize for video	Optimize the video quality when playing back. Text may appear less clear when enabling

Options	Description
---------	-------------

USB 3.0 Video Dock/Dual Head Video Dock

(* The actual item is depending on the model)

Fit to TV Adjust the size of Windows Desktop on the TV

Note: This function works only when one add-on monitor is connected. Besides, this option will also only work in extended mode. The add-on monitor will change to the extended mode if selecting this option while in mirror mode.

Audio Setup Enable the Windows audio configuration page.

This function works only in specific models.

Video Setup Enable the Windows screen resolution page.

Multi-monitor configuration

An extra DVI monitor can be connected through the Docking Station (HDMI[®] and DVI monitors for Dual Head Station) if one monitor is already connected to the PC directly. Once the extra monitor is connected, it can be configured to use either “mirror mode”, “extended mode” or be the primary display.

Position the mouse anywhere on the **Windows Desktop**, right-click and select **<Screen Resolution>** on Windows[®] 7/ Windows[®] 8, **Personalize > Display Settings** on Windows[®] Vista or **Properties > Settings** on Windows[®] XP.

Docking Station



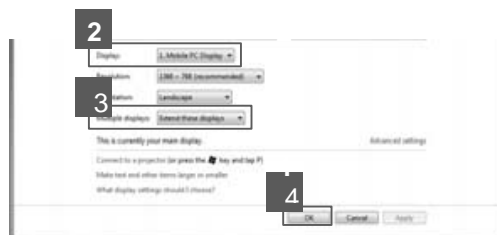
Dual Head Station



Alternatively, click **< [Utility Icon] >** in the **Windows System Tray**, and then select **DisplayLink Manager** or **Video Setup**.

Extended mode

1. Refer to the **Windows system configuration** section to open the configuration page.
2. In the **Display** drop-down menu, select the preferred monitor.



3. Check the **Multiple Displays > Extend these displays** on Windows[®] 7/ Windows[®] 8, **Extend the desktop onto this monitor** box on Windows[®] Vista or **Extend my Windows desktop onto this monitor** box on Windows[®] XP.

4. Click **<OK>** to confirm and close the settings screen.
5. Once the setting is completed, simply drag and drop the application icons or the opened windows to the add-on monitor. However, some applications may not support to display on the extended desktop.

Cursor disappeared

If the status remains in the extended mode but the adapter is disconnected, the desktop will still be panned to the add-on monitor. The cursor may not be found on the primary monitor in such a case. If it happens, connect the add-on monitor through the adapter again or keep moving the mouse.

Video playback in extended mode

If the video or DVD playback quality is poor or low performance in the extended mode, please playback it on the primary monitor instead of the add-on monitor.

Mirror mode

1. Refer to the **Windows system configuration** section to open the configuration page.
2. In the **Display** drop-down menu, select the preferred monitor.
3. Check the **Multiple Displays > Duplicate these displays** on Windows[®] 7\ Windows[®] 8, uncheck the **Extend the desktop onto this monitor** box on Windows[®] Vista or **Extend my Windows desktop onto this monitor** box on Windows[®] XP/ Windows[®] 2000.
4. Click **<OK>** to confirm and close the settings screen.


Be the primary monitor

1. Refer to the **Windows system configuration** section to open the configuration page.
2. In the **Display** drop-down menu, select the preferred monitor.
3. Check the **Make this my main display** box on Windows[®] 7 /Windows[®] Vista, **Set as Main Monitor** on Windows[®] 8 or **Use this device as the primary monitor** box on Windows[®] XP.

Note: Some PCs and laptops may need to disable the main display (i.e. uncheck the **Extend the desktop onto this monitor** or **Extend my Windows desktop onto this monitor** box for the main display) as part of the same settings change.

4. Click <**OK**> to confirm and close the settings screen.

Windows shortcut

Press <  (**Windows**) > + <**P**> button to bring up the menu as below, and then select a desired option. This function is available for Windows[®] 7 only.



Supported resolution

Before adjusting the resolution, refer to the table below for the supported resolution.

	Name	Refresh rate 16 bit	Refresh rate 32 bit
640x480	VGA	60 72 75 85	60 72 75 85
800x600	SVGA	56 60 72 75 85	56 60 72 75 85
1024x768	XGA	60 70 75 85	60 70 75 85
1280x720	720p	60	60
1280x768	WXGA+	60 70 75 85	60 70 75 85
1280x800	WXGA	60	60
1280x1024	SXGA	60 75 85	60 75
1366x768	WXGA+	60	60
1400x1050	SXGA+	60 75 85	60 75 85
1600x1200	UXGA	60	60
1680x1050	WSXGA+	60	60
1920x1080	1080p	60	60
1920x1200	WUXGA	60	60
2048x1152	QXGA	60	60

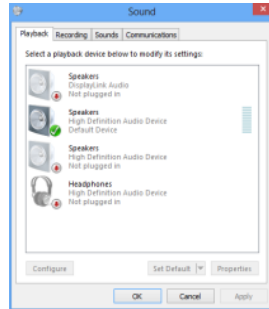
Note that interlaced modes and reduced blanking modes are not supported.

Audio configuration

By default, when the docking station is connected to a computer, the audio configuration may be changed to **USB (Multimedia) Audio Device** automatically (this setting depends on models). If it does not work, follow the steps below to setup.

For Windows® 8 user

1. Open **Control Panel** and then select the hardware and sound icon
2. Click **Sound->Manage audio devices** and then select **Displaylink Audio**



For Windows® 7 user

1. Open **Control Panel** and then select the sound or audio icon.
2. Click **Playback** tab, and then select **USB Audio Device** or **Displaylink Audio**



For Windows® XP user

1. Click the DisplayLink icon to bring up the **DisplayLink Manager** on the **Windows System Tray**, and then select **Audio Setup**.



2. Click **Audio** tab, and then select **USB Audio Device** or **DisplayLink Audio** on the **Sound playback** option.
3. Repeat the step 2 on the **Sound recording** option.



Uninstall the driver

For Windows[®] 7/ Windows[®] 8 user

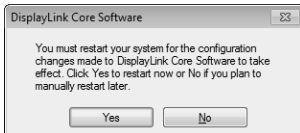
1. Open the **Control Panel > Programs > Programs and Features > Uninstall or change the program**, and then double click **<DisplayLink Graphics>**.



2. Click **<Yes>** to continue the procedure.



3. Click **<Yes>** to restart your computer.



For Windows® Vista user

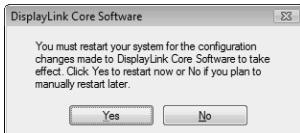
1. Open the **Control Panel > Programs > Programs and Features > Uninstall or change the program**, and then double click <DisplayLink Graphics>.



2. Click <Yes> to continue the procedure.



3. Click <Yes> to restart your computer.

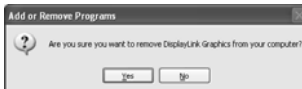


For Windows® XP user

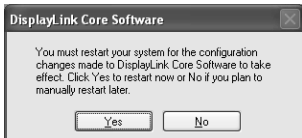
1. Open the **Control Panel > Programs > Programs and Features > Uninstall or change the program**, and then double click **<DisplayLink Graphics>**.



2. Click **<Yes>** to continue the procedure.



3. Click **<Yes>** to restart your computer.



Specification

Host Interface	USB 3.0	
Connector	Video output	HDMI® 30pin Female Connector (Dual Display model) DVI HDDE 30pin Female Connector
	Host upstream link	USB B Type Female Connector
	HUB downstream link	USB A Type Female Connector
	Audio Port	3.5mm stereo mini-jack 2.1ch
	Ethernet Port	RJ45 Connector
	Power	DC power jack
Video resolution	HDMI (Dual Display model)	2048x1152
	DVI	2048x1152
Supported colors	16 Bits and 32 Bits	
Audio	2.1Ch	
Ethernet	10/100/1000	
Power	Power Mode	Self-powered
	Power Adapter	Input: AC 100-240V Output: DC 5V/4A
	Power Consumption	Operating Power: 14.43W Suspend Mode Power: 1.95W
Physical Properties	Housing	ABS (Plastic)
	Weight	365g approx.
Working Environment	Operation Temperature	0~40 degree
	Storage Temperature	-20~70 degree
Compliance	CE,FCC	

Regulatory compliance

FCC conditions

This equipment has been tested and found to comply with Part 15 Class B of the FCC Rules. Operation is subject to the following two conditions:

- (1) This device may not cause harmful interference
- (2) This device must accept any interference received and include interference that may cause undesired operation.

CE

This equipment is in compliance with the requirements of the following regulations: EN 55 022: CLASS B

WEEE information

For EU (European Union) member users: According to the WEEE (Waste electrical and electronic equipment) Directive, do not dispose of this product as household waste or commercial waste. Waste electrical and electronic equipment should be appropriately collected and recycled as required by practices established for your country. For information on recycling of this product, please contact your local authorities, your household waste disposal service or the shop where you purchased the product.



Shintaro Blazer Docking Station
User's Manual

