



USB Service Library User Guide



Service Library USB User Guide

Contents

Introduction	3
Recommended System Requirements:	3
Description of Service Library USB	4
Manuals Tab	8
Navigating the Manuals	8
Printing Specific Pages from a Manual	13
Viewing and Printing Service Manual Schematics.....	14
Instructions Tab	16
Navigating the Instructions	16

Introduction

Welcome to the Bobcat Service Library USB. The following user manual will act as a training tool and a support document for your Service Library USB.

IT Service Desk Contact Information

Phone Number: +32 2 404 07 22

Recommended System Requirements:

- Available USB Type A port
- Microsoft® Windows® XP (service pack 3 or greater), Microsoft® Windows Vista™, Windows 7, Windows 8, Windows 10
- Adobe® Reader® or Adobe® Acrobat® software *
- Windows .NET Framework (version 4.0 or greater)
- Microsoft Security Update KB2538243

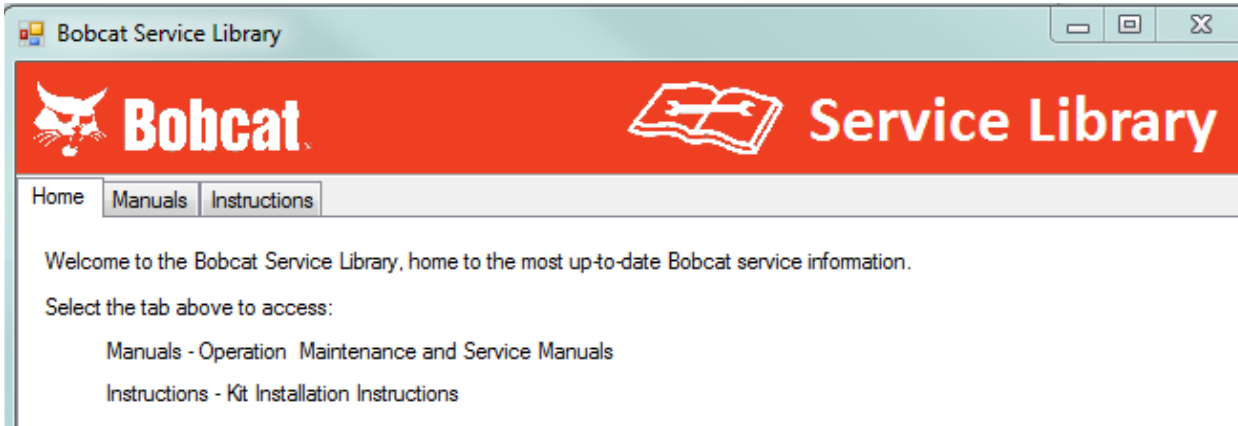
Compatible with:

- Verizon Jetpack Model MiFi 6620L Software version 1.3

*Required to properly display all content.

Description of Service Library USB

1. Each USB will contain a [Bobcat.Service.Library-E.exe](#) file that when opened will start the application and allow you to navigate throughout the Service Library. All files require you to have Adobe® Acrobat® or Reader® installed on your computer.



2. Each USB has a mailing date (month, year) printed on it. The USB application will expire on March 31st each year (the subscription year runs from January - December). When the application is 15 days or less to expiring, a warning message will appear each time you open the application stating, "Files will expire in (x) days." Once the application has exceeded the expiration date, you will no longer be able to open it.
3. Printing of publications is allowed (but not required).
4. A new USB (with all available updates) will be sent to dealers on a quarterly basis. Once the new USB is received, the old USB content can be deleted and the USB reused.
5. Service Library USBs are not for customer use; dealer use ONLY.

Procedure for Operating the USB Service Library

NOTE: Some versions of Adobe® Reader® or Adobe® Acrobat® may appear differently.

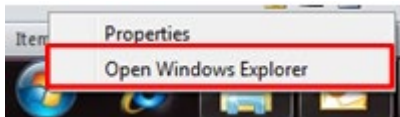
1. Insert the connector end of the USB flash drive into one of your computer's available USB flash drive type A ports. A USB flash drive port will be designated with one of the symbols below:



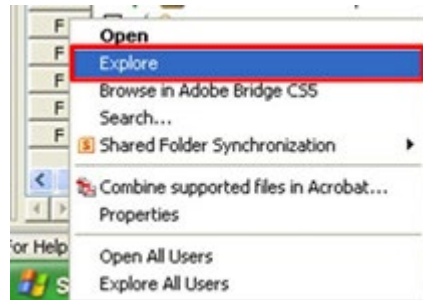
2. Right Click on your Windows icon and choose Windows Explorer to open it.

NOTE: On Windows 10, click on File Explorer.

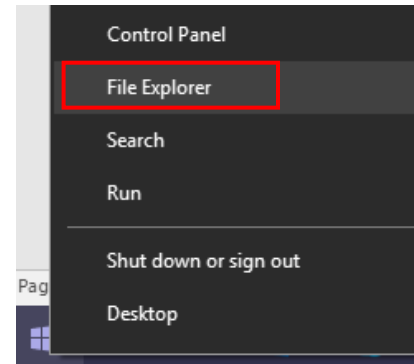
Windows XP



Windows 7

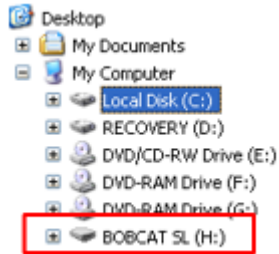


Windows 10



3. When the Explorer window opens. Click on the BOBCAT SL drive.

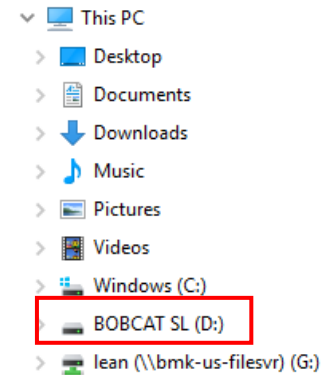
Windows XP



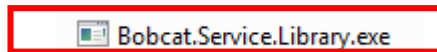
Windows 7



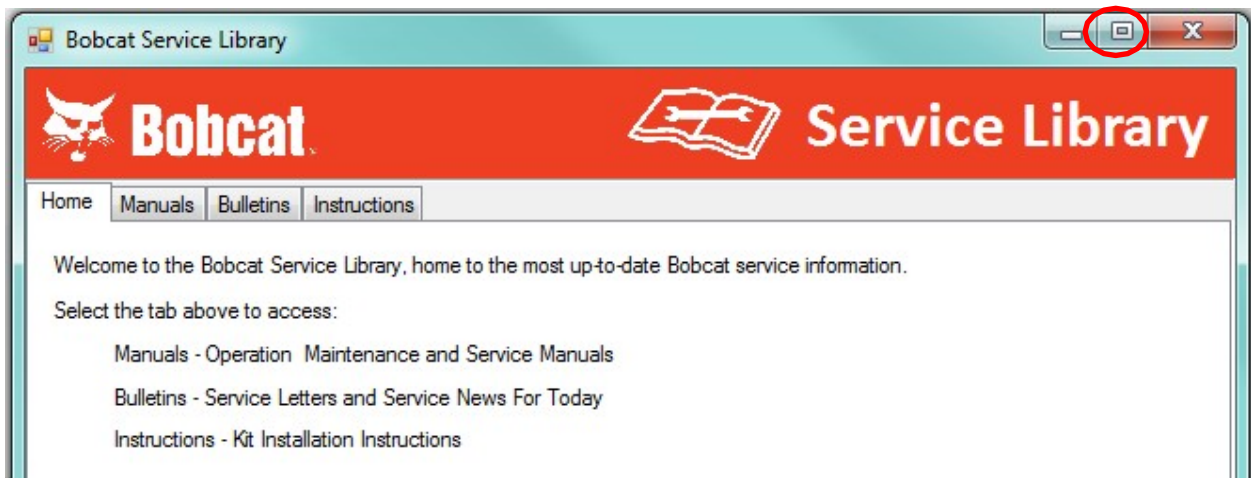
Windows 10



4. Double click the Bobcat.Service.Library.exe.

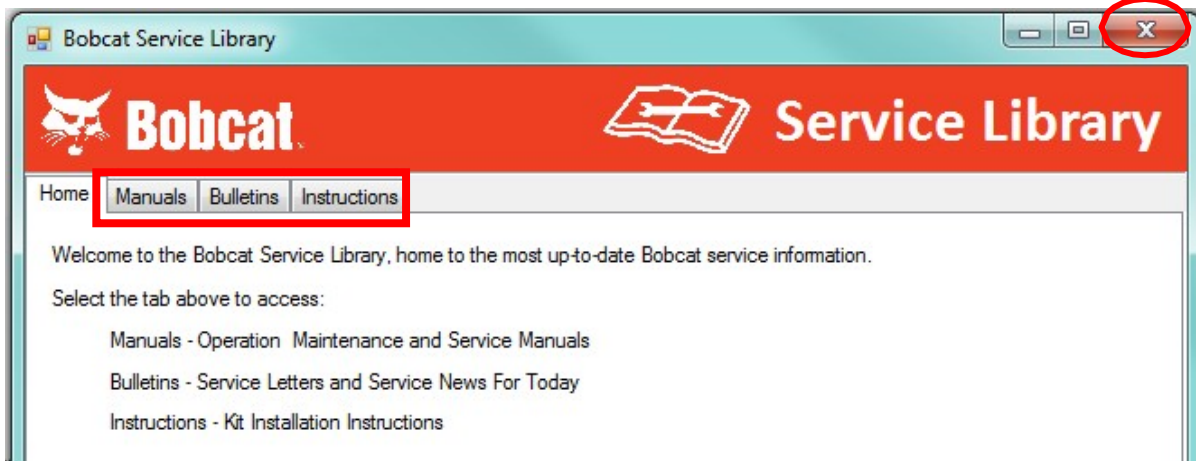


5. The Bobcat.Service.Library.exe will open a window that looks similar to the Bobcat Service Library Online.



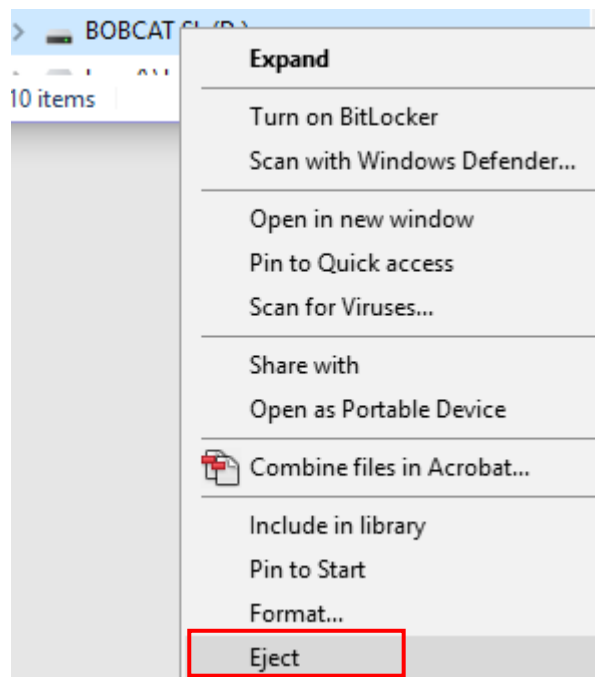
NOTE: Selecting the Maximise button in the middle of the top right corner will make the Service Library Window full screen.

6. From the Home screen choose the Manuals, Bulletins or Instructions tab to view content.



NOTE: If at any time you want to close the program select the Close button on the top right corner.



7. To discontinue the use of the Bobcat Service Library USB, close all open files and the Bobcat Service Library program. To safely eject the USB flash drive, return to your Windows explorer screen (see step 3) and right click on BOBCAT SL and select Eject. Remove the USB flash drive from your computer when you are prompted that it is 'safe to remove hardware'.

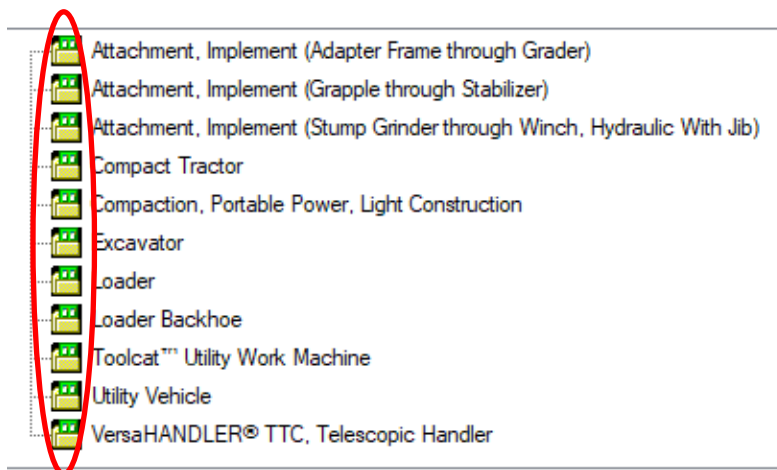


Manuals Tab

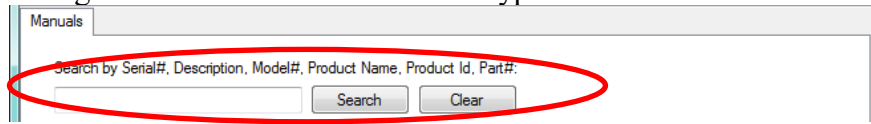
1. Manuals are divided by product type. Manuals are further separated into several categories such as model group, model name, model number or manual type, based on the product type selected.
2. Each manual file has an expiration date which will expire the following July 15th. If a file is close to expiration, an expiration notice will appear during the initial view of the manual warning the user with a message that will appear 15 days (and 5 days) before the expiration date. Once the manual has exceeded the expiration date you will no longer be able to view the manual. The newest (unexpired) files will always be available on the Bobcat Service Library.
3. Printing is allowed (but not required) and the printing of hydraulic and electrical schematics are available in fit to page size (letter) or multi-page printing which allows assembly of pages into a large size schematic.

Navigating the Manuals

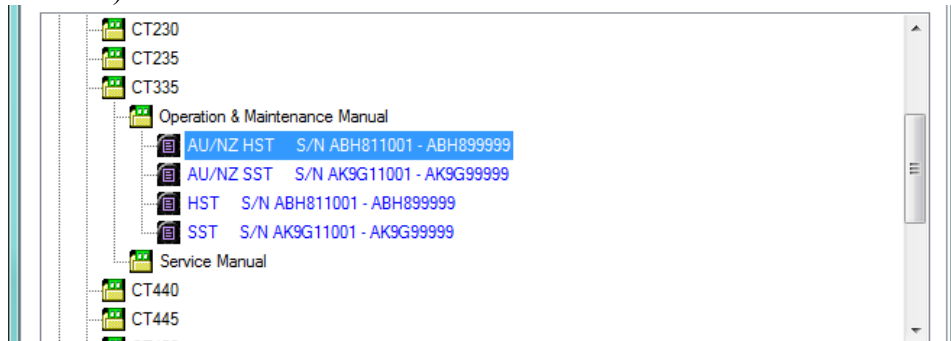
1. To find the Manual you would like to view, select the Product Type and click on the folder icon  to expand the menu until the Manual name or Serial Number is displayed. Select the Manual to view by clicking on the **BLUE** link. Click on the folder icon again  to minimise products that you are not looking for to make viewing easier.

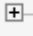
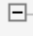


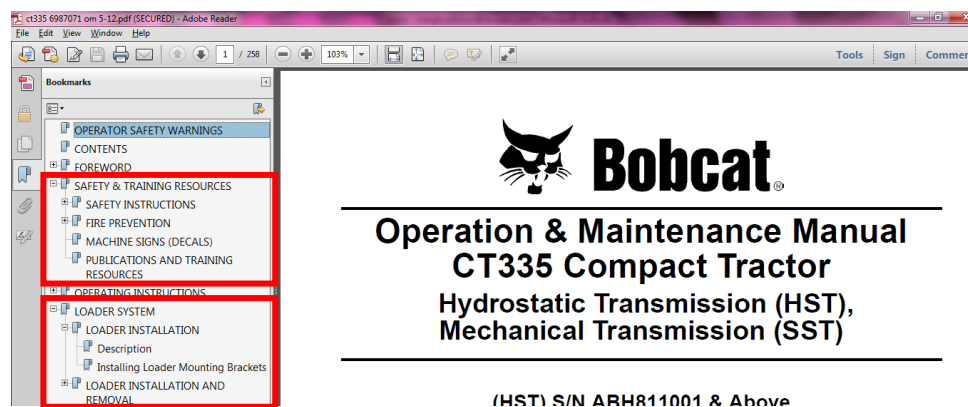
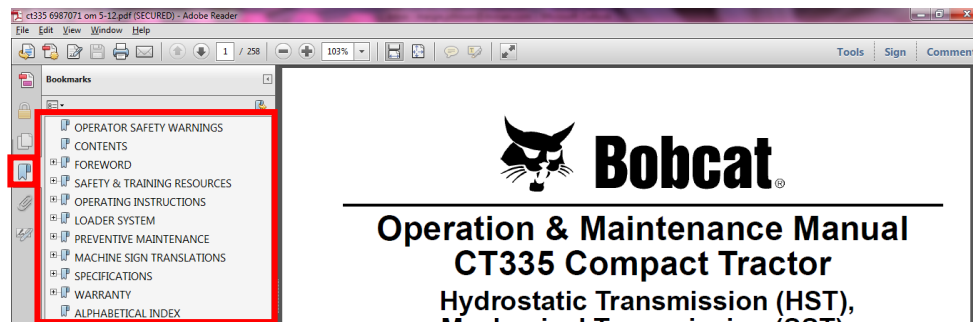
- To search for a specific Manual, type a Model Name or Number, Serial Number or Manual Part Number in the Search box and click the Search button. To clear your search and return back to the original condensed list of Product Types click the Clear button.



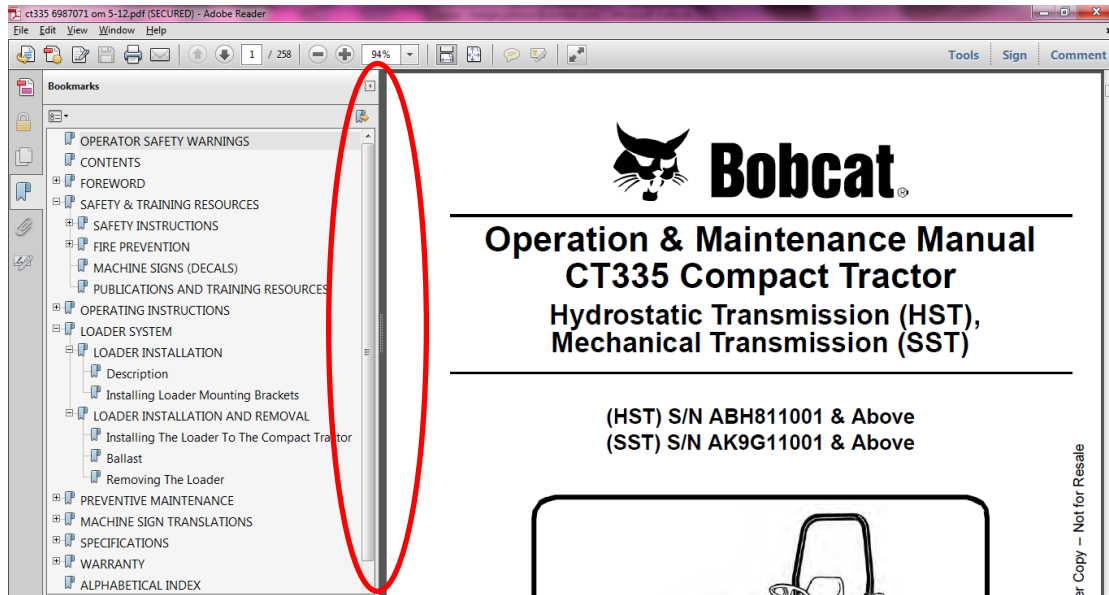
- Once a link is clicked the manual will open in your default PDF reader (which should be Adobe® Reader®).



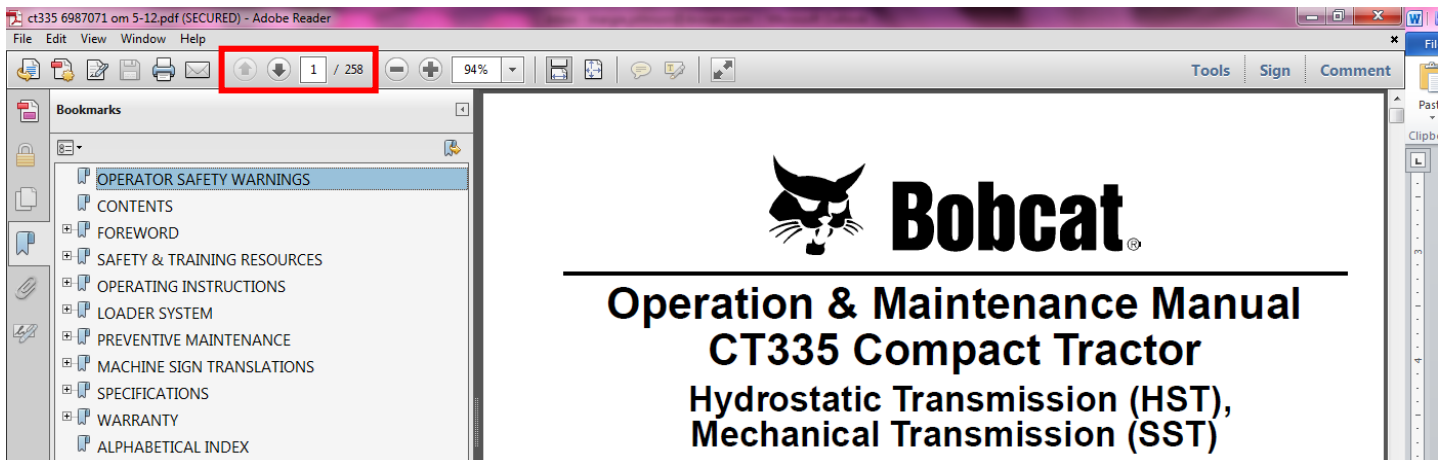
- The bookmarks can either be expanded or collapsed to reveal the individual subsections within the manual for detailed searching by clicking on the plus  or minus  icon to the left of the bookmark.




- The bookmark panel width can be adjusted by dragging the right side of the bookmark view to the right or left.

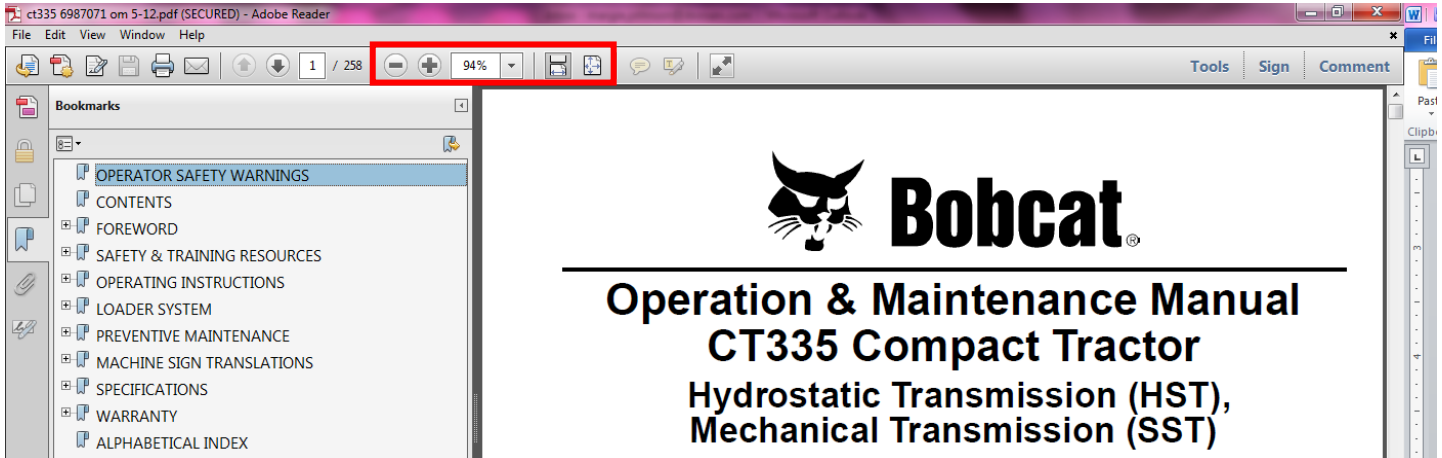


- The manual can be navigated page by page or the user can type in the desired page wanted for viewing by typing in the page number in the quick access toolbar and pressing the Enter key on the keyboard.

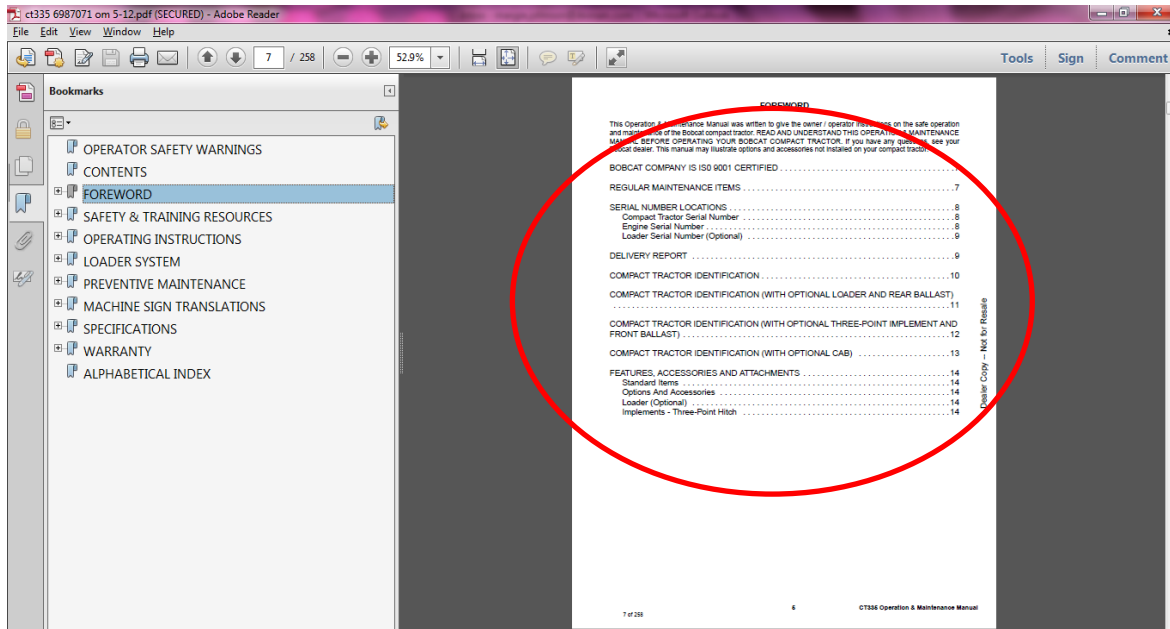




8. The quick access toolbar also contains buttons that can change your page view. A user can directly type in a percentage to zoom in or click on the  buttons to change the size of the page.



9. Some manuals have specific links within the manual allowing the user to click on a link which automatically takes the user to that location in the manual.



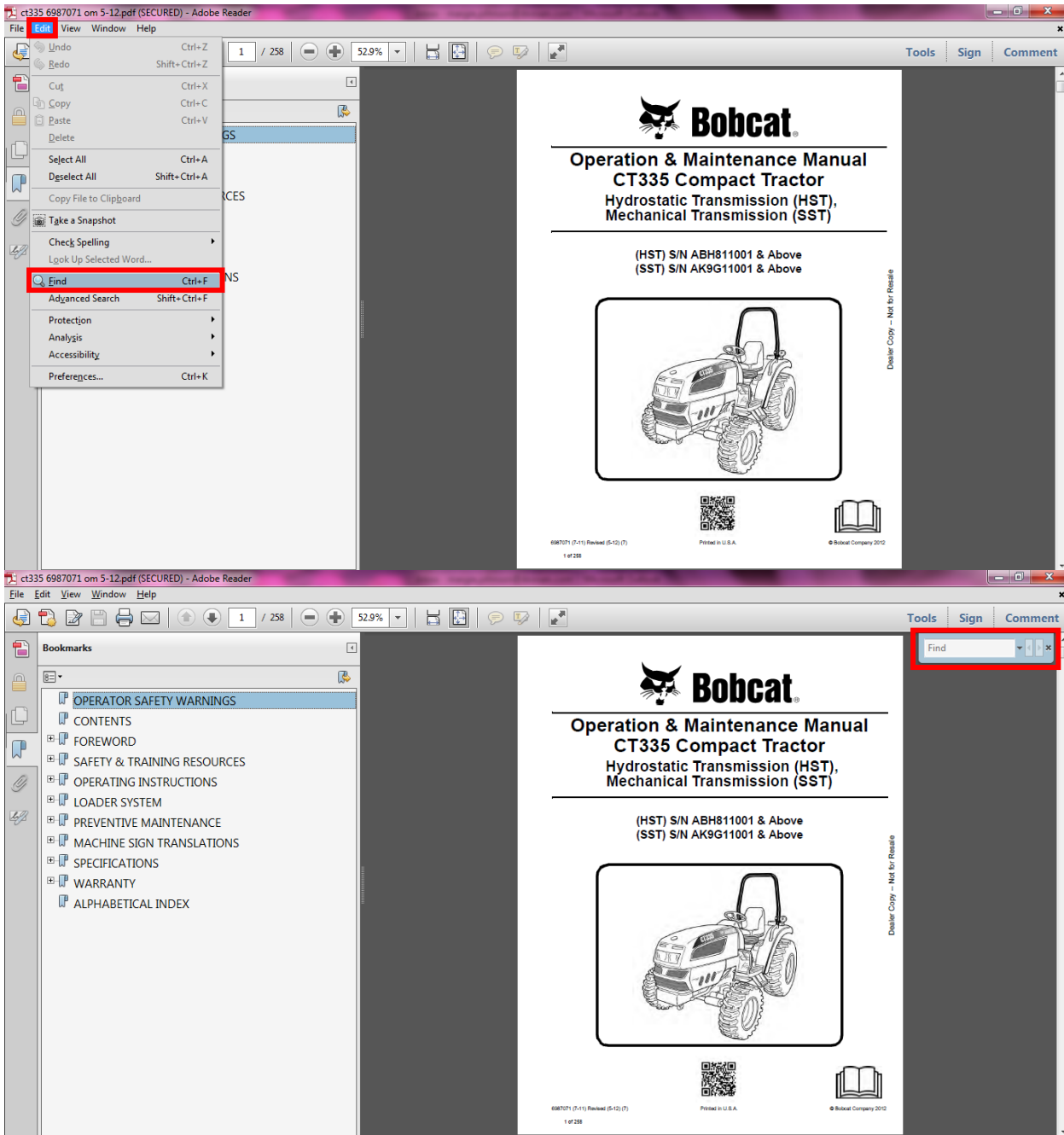
Replacing Filter Element

See the [SERVICE SCHEDULE](#) for the correct service interval. [\(See SERVICE SCHEDULE on Page 151.\)](#)

Open the engine cover. [\(See ENGINE COVER on Page 169.\)](#)

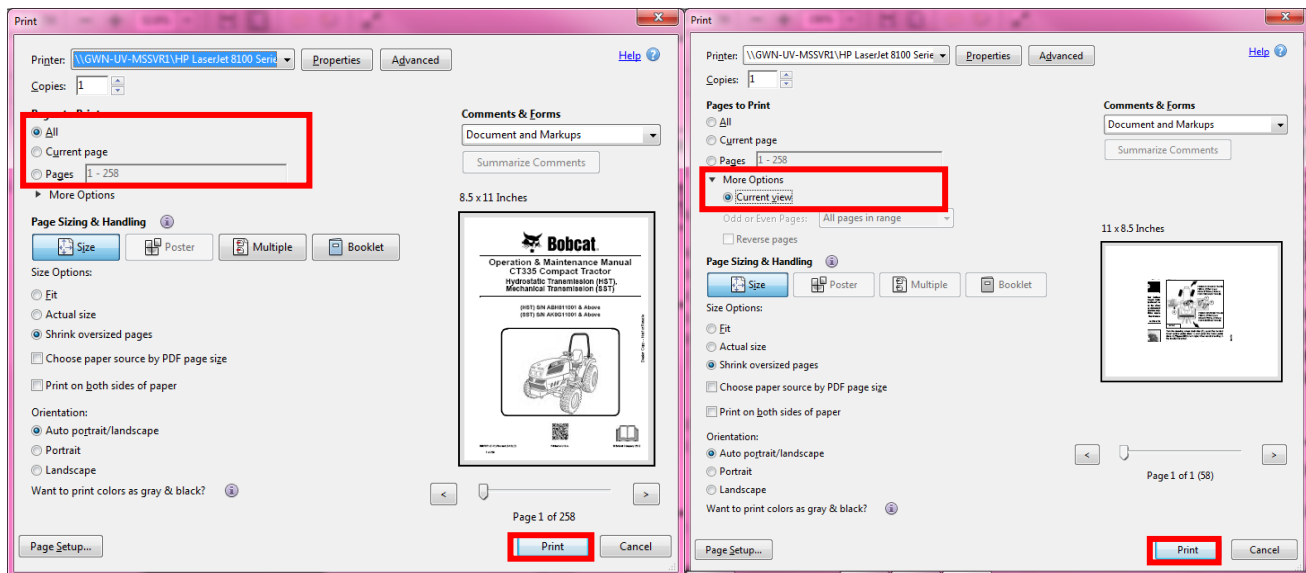


10. The user can also search for specific words in the manuals. Click on the **EDIT** pull down menu and select Find or use the shortcut keys **CTRL+F**.



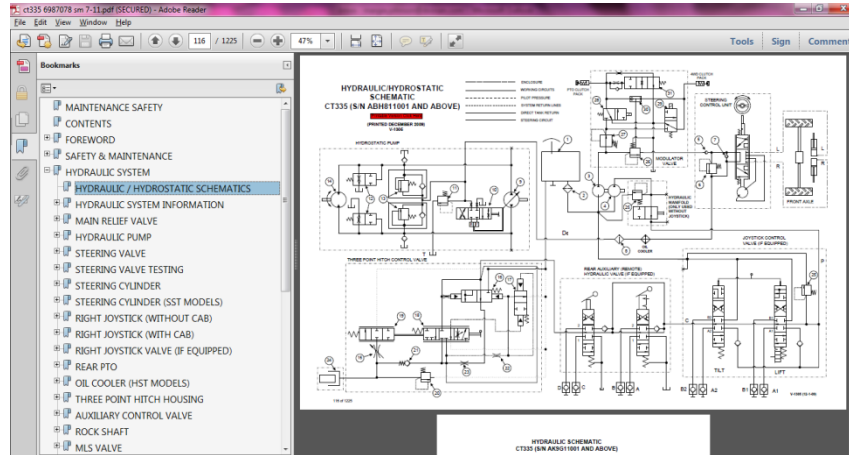
Printing Specific Pages from a Manual

1. Single or multiple pages can be printed from a manual. Click on the **FILE** pull down menu and choose **PRINT**.
2. The user has several options to choose when printing. **All**, **Current page**, or **Pages _____**
 - **All** prints every page of the manual.
 - **Current page** prints the entire page of the manual on the screen.
 - **Pages _____** prints a page range from the manual that you determine.
3. The user can zoom into a specific area of a page and print the zoomed in portion by choosing **File > Print ▶ More Options**, selecting **Current view** and clicking on the print button.

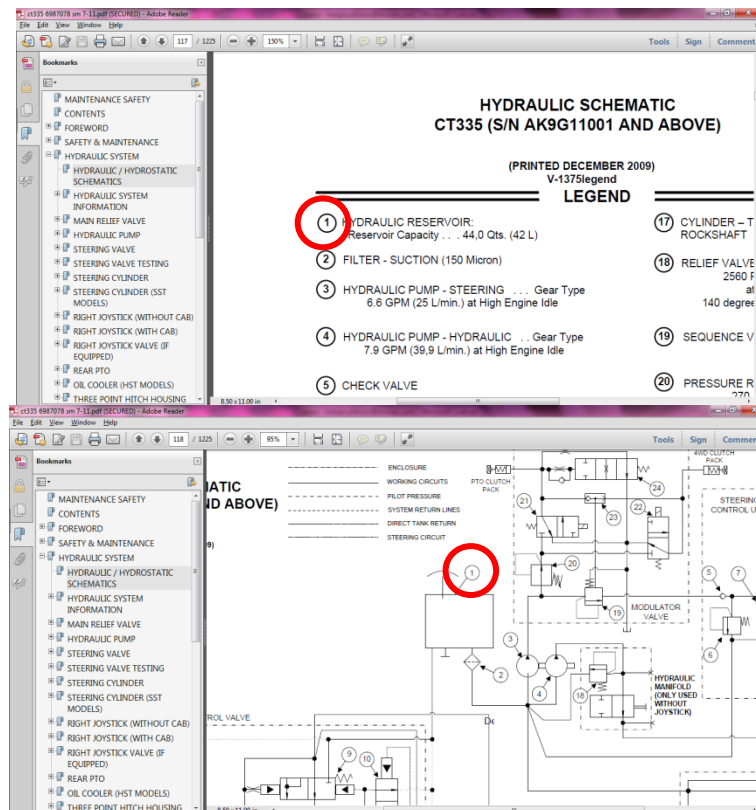


Viewing and Printing Service Manual Schematics

1. The hydraulic and electrical schematics can be located by using the bookmarks.

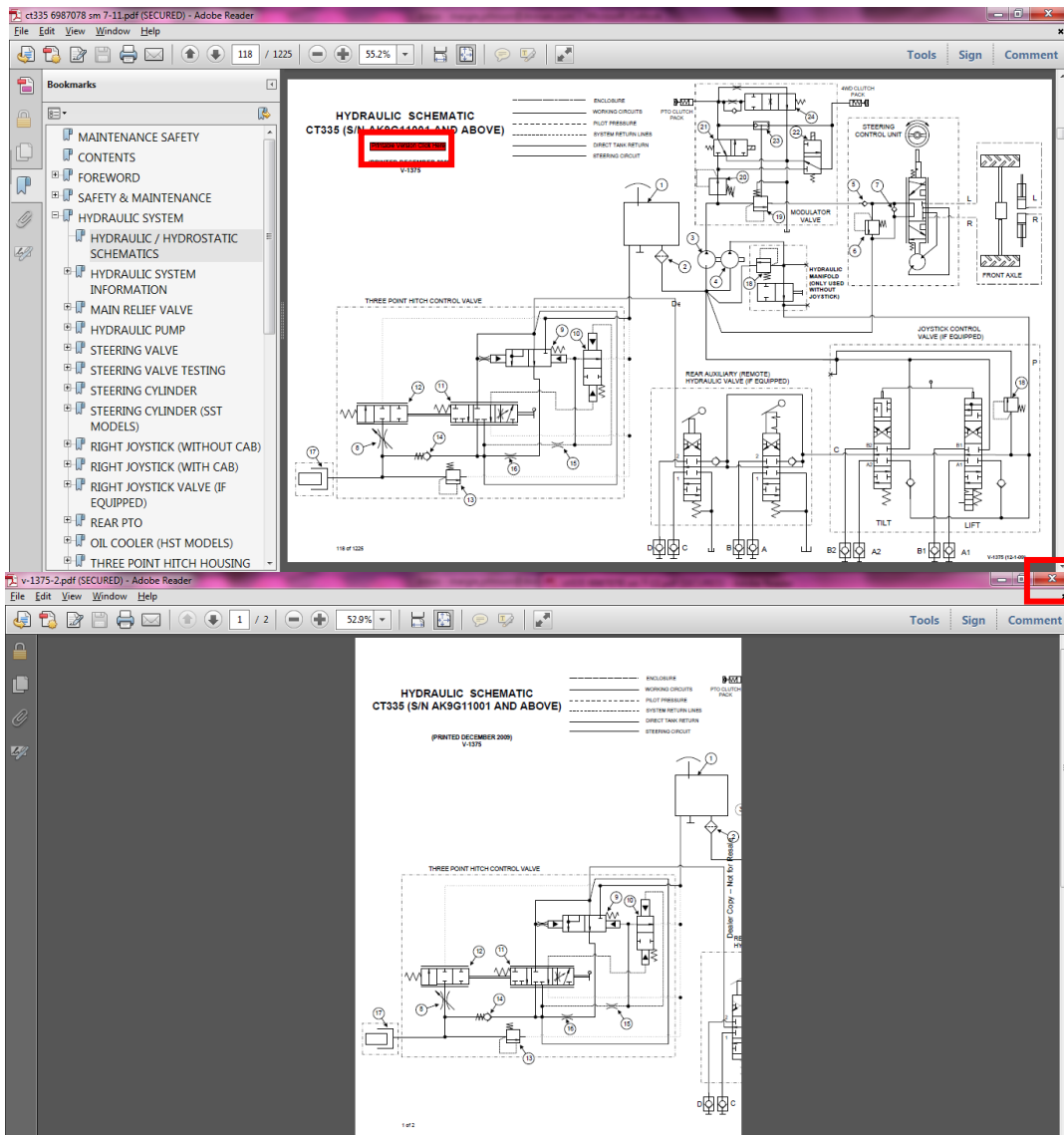


2. The item numbers between the hydraulic legend and schematic are linked (in newer manuals only). The user can click on the item number in the legend and the corresponding item number in the hydraulic schematic will appear (and vice versa) approximately in the centre of the screen.





3. The hydraulic legend / schematics and electrical schematics can be printed on 8.5”x 11” paper in portrait or landscape layout. View the schematic, click on the **PRINT** icon and select **CURRENT PAGE** to print the legend or schematic.
4. Some hydraulic legend / schematics and electrical schematics can be printed multi-page to allow for assembly of pages into a large size schematic. Schematics and legends with a **RED** box containing the text “Printable Version Click Here” have the multi-page print capability. Click on the **RED** box to open the multi-page view (8.5”x 11” layout) for printing.



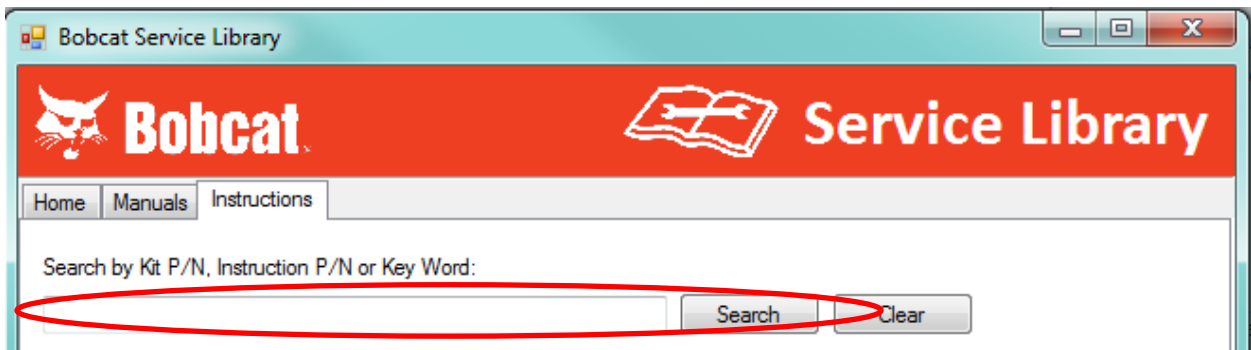
5. To return to the manual from the multi-page screen, close the file window.

Instructions Tab

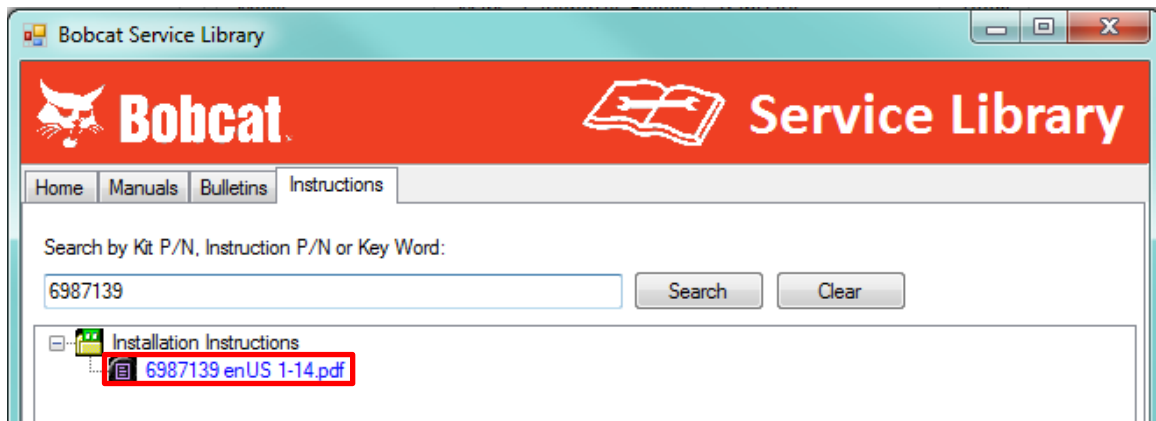
1. The Instructions tab contains all kit Installation Instructions.

Navigating the Instructions

2. To find the Instruction you would like to view type in the Kit Part Number, Instruction Part Number or keyword and click the Search button.



3. Select the Instruction to view by clicking the BLUE Instruction Part Number link.



NOTE: Searching by Kit or Instruction Part Number will most likely find you more manageable results.