

## USB to DVI External Dual Monitor Video Adapter USB to VGA External Dual Monitor Video Adapter

USB2DVIE3

USB2VGAE3



\*actual product may vary from photo

DE: Bedienungsanleitung - [de.startech.com](http://de.startech.com)

FR: Guide de l'utilisateur - [fr.startech.com](http://fr.startech.com)

ES: Guía del usuario - [es.startech.com](http://es.startech.com)

IT: Guida per l'uso - [it.startech.com](http://it.startech.com)

NL: Gebruiksaanwijzing - [nl.startech.com](http://nl.startech.com)

PT: Guia do usuário - [pt.startech.com](http://pt.startech.com)

For the most up-to-date information, please visit: [www.startech.com](http://www.startech.com)

## FCC Compliance Statement

This equipment has been tested and found to comply with the limits for a Class B digital device, pursuant to part 15 of the FCC Rules. These limits are designed to provide reasonable protection against harmful interference in a residential installation. This equipment generates, uses and can radiate radio frequency energy and, if not installed and used in accordance with the instructions, may cause harmful interference to radio communications. However, there is no guarantee that interference will not occur in a particular installation. If this equipment does cause harmful interference to radio or television reception, which can be determined by turning the equipment off and on, the user is encouraged to try to correct the interference by one or more of the following measures:

- Reorient or relocate the receiving antenna.
- Increase the separation between the equipment and receiver.
- Connect the equipment into an outlet on a circuit different from that to which the receiver is connected.
- Consult the dealer or an experienced radio/TV technician for help.

## Use of Trademarks, Registered Trademarks, and other Protected Names and Symbols

This manual may make reference to trademarks, registered trademarks, and other protected names and/or symbols of third-party companies not related in any way to StarTech.com. Where they occur these references are for illustrative purposes only and do not represent an endorsement of a product or service by StarTech.com, or an endorsement of the product(s) to which this manual applies by the third-party company in question. Regardless of any direct acknowledgement elsewhere in the body of this document, StarTech.com hereby acknowledges that all trademarks, registered trademarks, service marks, and other protected names and/or symbols contained in this manual and related documents are the property of their respective holders.

# Table of Contents

|  |           |
|--|-----------|
| <b>Introduction</b> .....                      | <b>1</b>  |
| Packaging Contents .....                       | 1         |
| System Requirements.....                       | 1         |
| <b>Installation</b> .....                      | <b>2</b>  |
| Driver Installation (Windows) .....            | 2         |
| Multiple USB Video Adapter Installation .....  | 3         |
| Verifying Installation .....                   | 3         |
| <b>Configuring the USB Video Adapter</b> ..... | <b>4</b>  |
| Windows XP/Vista .....                         | 4         |
| Display ID .....                               | 4         |
| Display Resolution.....                        | 4         |
| Display Rotation .....                         | 4         |
| Display Modes .....                            | 5         |
| “EXTENDED” Display Mode (Default) .....        | 5         |
| “MIRROR” Display Mode .....                    | 5         |
| “PRIMARY” Display Mode .....                   | 5         |
| “OFF” Display Mode.....                        | 6         |
| Identify Monitors.....                         | 6         |
| Multi-Display Control Panel.....               | 6         |
| Display Settings .....                         | 7         |
| Windows 7 .....                                | 7         |
| <b>Supported Resolutions</b> .....             | <b>8</b>  |
| <b>Specifications</b> .....                    | <b>9</b>  |
| <b>Technical Support</b> .....                 | <b>10</b> |
| <b>Warranty Information</b> .....              | <b>10</b> |

# Introduction

The USB Multi Monitor External Video Adapter lets you add a high-resolution 1920x1200 external DVI (USB2DVIE3) or VGA (USB2VGAE3) output to your desktop or laptop computer system, using an available USB 2.0 port.

A cost-effective solution for systems that lack the outputs required for a multi-monitor setup, this high-performance USB Video Adapter can be used to mirror your primary display and show the same image on both screens, or extend your desktop to double your workspace.

This small form factor USB video adapter can be used with up to 4 additional (5 total) USB2DVIE3 or USB2VGAE3 USB video adapters, creating multiple DVI or VGA connections to add additional displays quickly and easily - all without having to open the computer case to add extra video cards.

## Packaging Contents

- 1 x USB to DVI Adapter (USB2DVIE3)  
or  
1 x USB to VGA Adapter (USB2VGAE3)
- 1 x Driver and Software CD
- 1 x Instruction Manual

## System Requirements

- USB enabled computer system with available USB port
- DVI or VGA enabled display device (e.g. monitor, projector, HTDV, etc)
- Single Video Adapter:
  - CPU: Intel/AMD single core 1.5 GHz or higher
  - RAM: 512 MB or more
- 2-3 Video Adapters:
  - CPU: Intel/AMD single core 2.4 GHz or higher
  - RAM: 1 GB or more
- 4-5 Video Adapters:
  - CPU: Intel/AMD dual core 2.0 GHz or higher
  - RAM: 2 GB or more
- Microsoft® Windows® XP/Vista/7 (32/64-bit)

# Installation



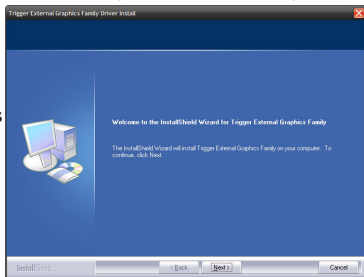
Please ensure that the driver installation is complete prior to the physical installation (plugging in) of the USB 2.0 Video Adapter

## Driver Installation (Windows)

1. Insert the Driver CD into your CD/DVD-ROM drive.
2. If the installation program does not begin automatically, locate the Setup.exe application. This file will be located in the root directory of the Driver CD (e.g. D:\).

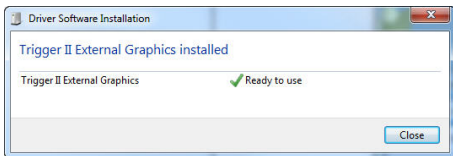
3. Executing the Setup.exe application will launch the following screen. Please click on Next:

**\*Ensure that the USB Video Adapter is not connected to the host computer.**



\*installation photos for reference only

4. Once the Windows has finished the driver installation, it will prompt you to restart the computer. Select "Yes, I want to restart my computer now", and click the "Finish" button.
5. While the computer is restarting, connect the DVI or VGA cord running from the secondary monitor/display to the adapter. Turn the monitor/display on.
6. Once Windows has fully loaded, plug the USB Video Adapter into an available USB 2.0 port of your PC or Notebook.
7. Windows will automatically install the drivers. Wait until a message appears confirming the successful installation.



8. The USB Video Adapter is now ready for use.

# Multiple USB Video Adapter Installation

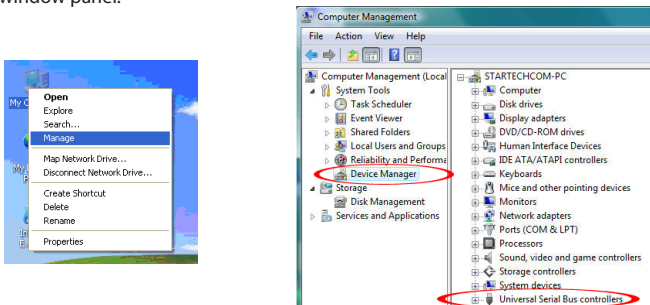
Ensure you have the latest version of the drivers installed, otherwise, please download them from the StarTech.com website ([www.startech.com](http://www.startech.com)).

1. Complete the standard driver installation steps, up to when you plug in the first USB Video Adapter.
2. Connect another monitor/display to the second USB Video Adapter, then turn on the display.
3. Connect the USB type A connector on the second USB Video Adapter to an available USB 2.0 port on the host computer. The driver installation will begin automatically.

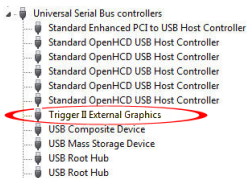
Repeat these steps for each additional USB Video Adapter you wish to install. Once all USB Video Adapters are installed, reboot the computer. After rebooting, you may be prompted to reboot one final time; please do so.

## Verifying Installation

From the main desktop, right-click on "My Computer" ("Computer" in Vista), then select Manage. In the new Computer Management window, select Device Manager from the left window panel.



Double-click the Universal Serial Bus Controllers category and the USB adapter should be visible.



\*actual device name may vary

# Configuring the USB Video Adapter

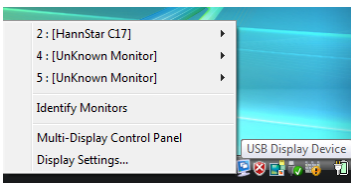
Look for the USB Video Adapter icon (  ) on your Windows System Tray (next to clock). Right-click this icon to access the variety of functions associated to the adapter.

## Windows XP/Vista

### Display ID

The USB Video Adapter supports the VESA defined DDC/EDID standard. The utility will show the display device ID whenever it is attached to the USB Video Adapter.

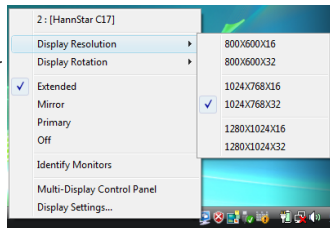
If there is no display device attached to the USB Video Adapter, an “Unknown Monitor” ID will be shown. In some cases, if the attached display device does not support EDID, the ID will also be defined as “Unknown Monitor”.



### Display Resolution

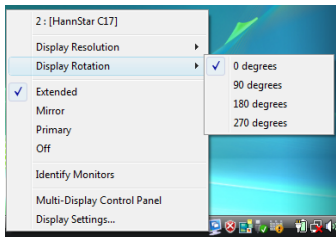
Select the desired video display resolution for the connected monitor.

The default setting resolution is: 1024 x 768 \* 32-bit.



### Display Rotation

4 options available: 0°, 90°, 180°, 270° when used with the Extended or Primary display modes. It is a useful function for some rotatable display devices.



# Display Modes

## “EXTENDED” Display Mode (Default)

A default display mode; this feature allows the attached USB Video Adapter enabled display to work as an “Extended” display to the on-board display. The extended working space improves work efficiency.

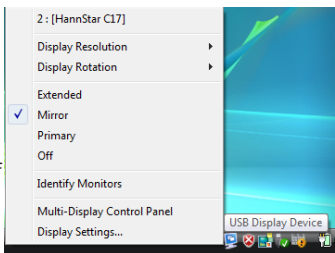
You may change the relative position of this extended display through the Display Settings.



## “MIRROR” Display Mode

This feature allows the same content from the on-board display to be duplicated (mirroring) to the USB Video Adapter enabled display.

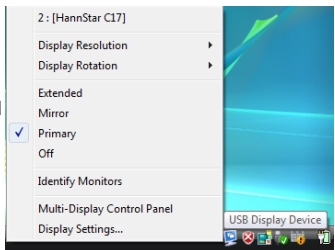
The screen resolution setting on the USB Video Adapter enabled device will match the on-board displays resolution. For example, if the on-board displays resolution is 1024 x 768\*32-bit, then the USB Video Adapter will use the same resolution.



## “PRIMARY” Display Mode

A unique feature to allow the USB Video Adapter to act as the main working display. The USB Video Adapter will work as the main graphics adapter on the system. The on-board display will work as the extended display.

Please be advised that some display utilities and drivers that shipped with certain AGP and built-in display adapters may prevent this option from working on some systems. You may be able to disable the other utility program (usually found in the same toolbar located on the bottom right hand corner) to make this function work properly.





## “OFF” Display Mode

This option disables the video output from the USB Video Adapter.

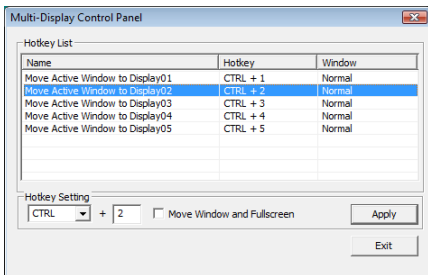
## Identify Monitors

Easy display identification via an overlay will be shown in the upper right corner of all attached display devices.



## Multi-Display Control Panel

A unique feature to allow quicker and simpler management of a multi-display environment. A series of hotkeys to quickly move the active window or mouse cursor to the desired display (either on-board or each USB Video Adapter).

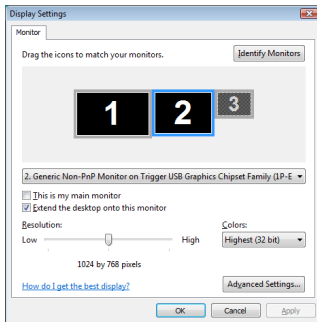


The default setting of the hotkeys can be found in the Hotkey List of “Multi-Display Control Panel”.

**For example:** Ctrl + 2 means: to move the window to Display 2

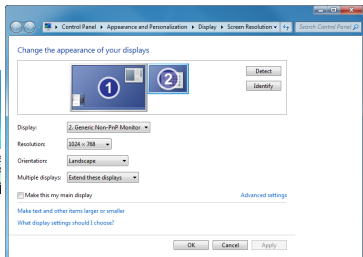
# Display Settings

Quick access to the Windows “Display Settings” window.



## Windows 7

The USB Video Adapter drivers allow for all adjustments through the built-in Display Settings window. These settings can be accessed by right-clicking on the Windows Desktop and selecting “Screen Resolution” or by right-clicking on the USB Video Adapter icon in the system tray and selecting “Display Settings”.



Select the physical display you wish to change the settings on, from the “Display” drop down menu. Display Mode, resolution and rotation can be changed from this screen.

# Supported Resolutions

| Screen Resolution<br>(Widescreen) | Screen Resolution<br>(Standard) |
|-----------------------------------|---------------------------------|
| 1920 x 1200                       | 1600 x 1200                     |
| 1920 x 1080                       | 1400 x 1050                     |
| 1680 x 1050                       | 1280 x 1024                     |
| 1600 x 900                        | 1280 x 960                      |
| 1440 x 900                        | 1152 x 864                      |
| 1360 x 768                        | 1024 x 768                      |
| 1280 x 800                        | 800 x 600                       |
| 1280 x 768                        |                                 |
| 1280 x 720                        |                                 |

\*16/32-bit color depth, 50/60Hz refresh rates supported

# Specifications

|                                     | <b>USB2DVIE3</b>                               | <b>USB2VGAE3</b>                            |
|-------------------------------------|--|---|
| <b>Video Signal</b>                 | DVI (digital)                                  | VGA (RGBHV)                                 |
| <b>Host Interface</b>               | USB 2.0  |   |
| <b>Chipset ID</b>                   | MCT T2-285B                                    | MCT T2-285A                                 |
| <b>Connectors</b>                   | 1 x USB type A male<br>1 x DVI-I 29-pin female | 1 x USB type A male<br>1 x DE-15 VGA female |
| <b>LEDs</b>                         | N/A  |   |
| <b>Onboard Memory</b>               | 32 MB  |   |
| <b>Maximum Video Resolution</b>     | 1920 x 1200 (widescreen)                       |   |
| <b>Maximum Number of Adapters</b>   | 5  |   |
| <b>Operating Temperature</b>        | -10°C ~ 55°C (14°F ~ 131°F)                    |   |
| <b>Storage Temperature</b>          | -25°C ~ 75°C (-13°F ~ 167°F)                   |   |
| <b>Humidity</b>                     | 0% ~ 95% RH                                    |   |
| <b>Built-in Cable Length</b>        | 50cm / 20in                                    |   |
| <b>Dimensions (LxWxH)</b>           | 90.5mm x 52.5mm x<br>18.0mm                    | 88.0mm x 52.5mm x<br>18.0mm                 |
| <b>Weight</b>                       | 92g  | 80g   |
| <b>Compatible Operating Systems</b> | Windows 2000/XP/Vista/7 (32/64-bit)            |   |

# Technical Support

StarTech.com's lifetime technical support is an integral part of our commitment to provide industry-leading solutions. If you ever need help with your product, visit [www.startech.com/support](http://www.startech.com/support) and access our comprehensive selection of online tools, documentation, and downloads.

## Warranty Information

This product is backed by a two year warranty.

In addition, StarTech.com warrants its products against defects in materials and workmanship for the periods noted, following the initial date of purchase. During this period, the products may be returned for repair, or replacement with equivalent products at our discretion. The warranty covers parts and labor costs only. StarTech.com does not warrant its products from defects or damages arising from misuse, abuse, alteration, or normal wear and tear.

### Limitation of Liability

In no event shall the liability of StarTech.com Ltd. and StarTech.com USA LLP (or their officers, directors, employees or agents) for any damages (whether direct or indirect, special, punitive, incidental, consequential, or otherwise), loss of profits, loss of business, or any pecuniary loss, arising out of or related to the use of the product exceed the actual price paid for the product. Some states do not allow the exclusion or limitation of incidental or consequential damages. If such laws apply, the limitations or exclusions contained in this statement may not apply to you.

Hard-to-find made easy. At StarTech.com, that isn't a slogan. It's a promise.

StarTech.com is your one-stop source for every connectivity part you need. From the latest technology to legacy products — and all the parts that bridge the old and new — we can help you find the parts that connect your solutions.

We make it easy to locate the parts, and we quickly deliver them wherever they need to go. Just talk to one of our tech advisors or visit our website. You'll be connected to the products you need in no time.

Visit [www.startech.com](http://www.startech.com) for complete information on all StarTech.com products and to access exclusive resources and time-saving tools.

*StarTech.com is an ISO 9001 Registered manufacturer of connectivity and technology parts. StarTech.com was founded in 1985 and has operations in the United States, Canada, the United Kingdom and Taiwan servicing a worldwide market.*