

IRISCompressor™

User guide

Table of Contents

Introduction	1
IMPORTANT NOTES	1
Legal Notices	3
Installation and Setup	5
System Requirements.....	5
Installation.....	5
Activation.....	7
Automatic Update	9
Registration	9
Uninstall	10
Using IRISCompressor	11

INTRODUCTION

IRISCompressor is a handy compression tool that allows you to convert your image and PDF files into compressed PDF or XPS files in just a few mouse clicks.

The PDF and XPS files IRISCompressor generates are fully text-searchable, thanks to I.R.I.S.' OCR technology (Optical Character Recognition).

IMPORTANT NOTES

IRISCompressor can process one image file or PDF file at a time. A file may contain up to 10 pages. The OCR can be done in the language you select during installation.

In case you want to process more files at the same time, switch to **IRISCompressor Pro**.

In case you need to compress larger input files or entire batches of files, we can recommend other I.R.I.S. products such as **Readiris** and **IRISDocument Server**. These products also support a vast number of OCR languages. Visit the I.R.I.S. website <http://www.irislink.com> for more information.

The information and procedures provided in this documentation are based on the Windows 7 operating system.
--

LEGAL NOTICES

ICOMP_Normal-dgi/pko-25012012-04

Copyrights

Copyrights ©2011-2012 I.R.I.S. All Rights Reserved.

I.R.I.S. owns the copyrights to the IRISCompressor software and to this publication.

The information contained in this document is the property of I.R.I.S. Its content is subject to change without notice and does not represent a commitment on the part of I.R.I.S. The software described in this document is furnished under a license agreement which states the terms for use of this product. The software may be used or copied only in accordance with the terms of that agreement. No part of this publication may be reproduced, transmitted, stored in a retrieval system, or translated into another language without the prior written consent of I.R.I.S.

Trademarks

The I.R.I.S. logo and IRISCompressor are trademarks of I.R.I.S.

OCR ("Optical Character Recognition"), IDR ("Intelligent Document Recognition") and iHQC ("intelligent High Quality Compression) technology by I.R.I.S.

All other products mentioned in this publication are trademarks or registered trademarks of their respective owners.

iHQC™ patent-protected. US Patent No. 8,068,684.

INSTALLATION AND SETUP

SYSTEM REQUIREMENTS

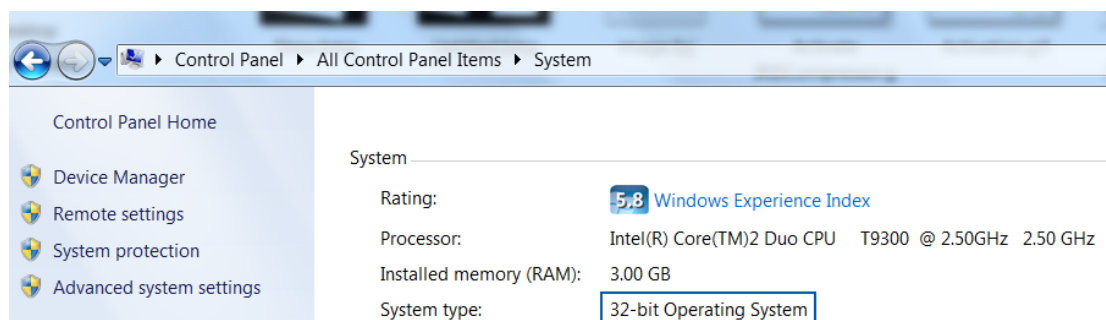
This is the **minimal system configuration** required to use IRISCompressor:

- A Pentium-based PC.
- 128 MB RAM.
- 115 MB free disk space.
- Microsoft Windows XP, Windows Vista, Windows 7 Operating System.

INSTALLATION

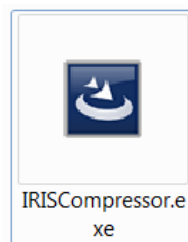
Before you start the installer:

Check if you need the 32-bit or 64-bit version; go to the Windows **Control Panel**, and click **System**. Then check your **System type**.



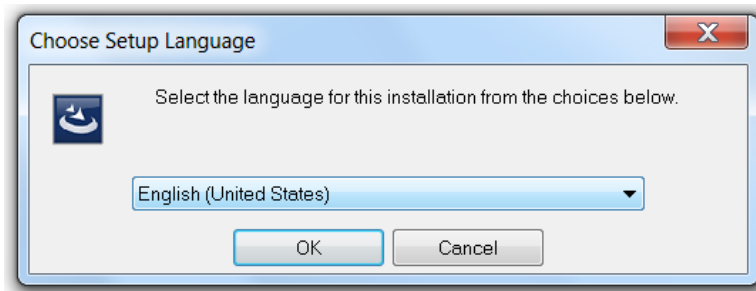
To install IRISCompressor:

- **ESD version:** download the installer to your computer.
- Double-click the installer to start it.



- Select the **Setup language** and click **OK**.

ATTENTION IRISCompressor Standard: the language you select here will also be the language in which you can recognize your documents (IRISCompre.



- Then, click **Next** and follow the on-screen instructions.
- Select **I accept the terms in this license agreement** and click **Next**.
- Enter a **User Name** and **Organization** (optional).
- Select the destination folder where IRISCompressor will be installed, and click **Install**.

The default folder is C:\Program Files\I.R.I.S.\IRISCompressor.

- Click **Finish** to complete the installation.

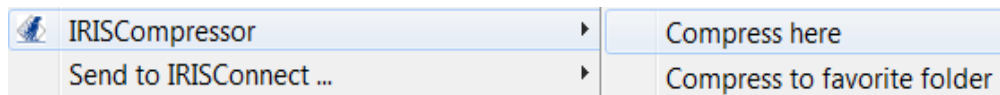
⚠ It is not recommended to have more than one version of IRISCompressor installed at the same time. In case you want to upgrade to a superior version, always uninstall your current version first before installing the superior version. See the topic **Uninstall** for more information.

ACTIVATION

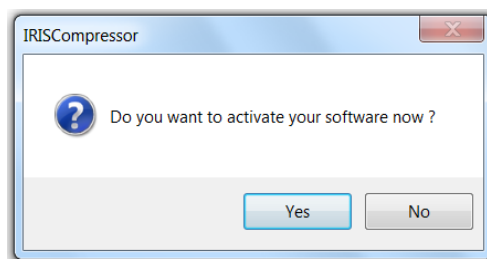
Once you have installed IRISCompressor you need to activate it. Unactivated copies of IRISCompressor are only available for use for ten days.

To activate IRISCompressor:

- Right-click a file you want to compress, and click **IRISCompressor > Compress here** in the menu that appears.



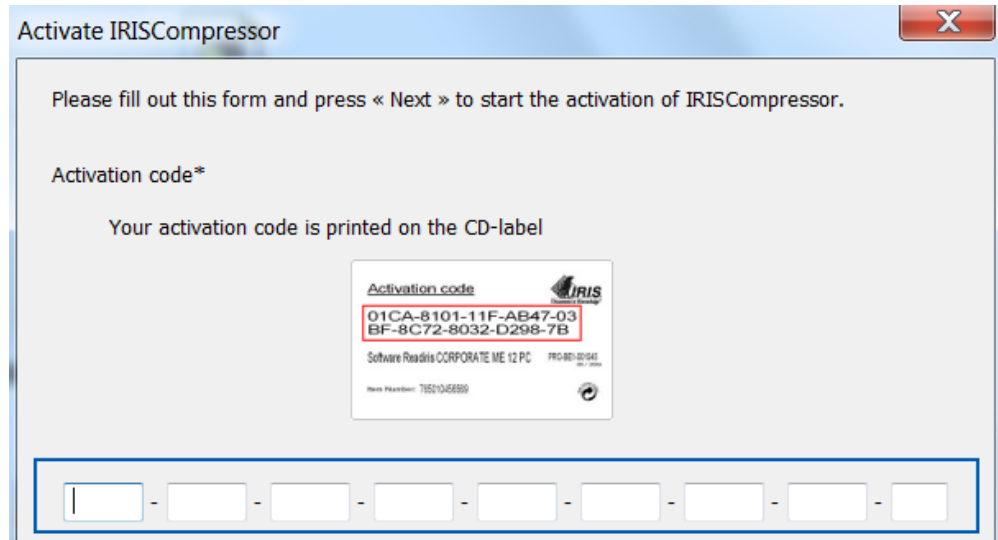
- You are prompted to activate IRISCompressor. Choose **Yes** to do so.



- Fill in your activation key in the **Activation key** field.

If you downloaded an ESD version of IRISCompressor (Electronic Software Delivery), the activation key was sent to you by e-mail.

If you purchased a regular version you find the activation key inside the product box.



Activate IRISCompressor

Please fill out this form and press « Next » to start the activation of IRISCompressor.

Activation code*

Your activation code is printed on the CD-label

Activation code
01CA-8101-11F-AB47-03
BF-8C72-8032-D298-7B

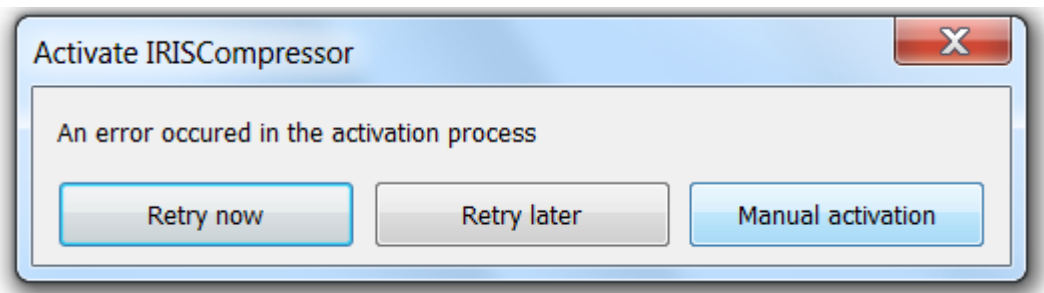
Software Reader CORPORATE ME 12 PC PRO-801-021041
Next Position: TSD1048599

Input fields: | - - - - - - - - - -

- Then click **Next** and follow the on-screen instructions.

Note that an internet connection is required to complete the activation.

In case you do not have an internet connection on this machine but still want to do the activation, then click **Next** anyway. A new dialog box appears. Select **Manual Activation** and follow the instructions described there.



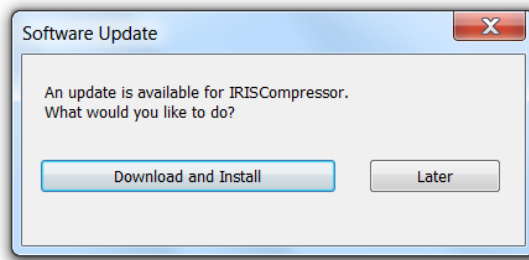
Activate IRISCompressor

An error occurred in the activation process

Retry now Retry later Manual activation

AUTOMATIC UPDATE

Each time a new update is available you will be prompted to install it. Click **Download and Install** to do so.



REGISTRATION

When you launch IRISCompressor for the first time, you are prompted to register. Registering your copy of IRISCompressor offers such benefits as product updates, product support, discounts on new products, and so on.

To register:

Fill out the registration form, then click **Register now**.



UNINSTALL

To uninstall IRISCompressor:

- Close **IRISCompressor**.
- Go to Windows **Control Panel**.
- Click **Programs and Features**.
- Then select **IRISCompressor** from the list and click **Uninstall**.

USING IRISCOMPRESSOR

With IRISCompressor you can compress your image and PDF files into compressed PDF or XPS files.

Supported image file types

IRISCompressor is able to compress the following image file types:

JPEG	JP2K (JPEG2000)
BMP	TIFF
PDF*	GIF
PNG	

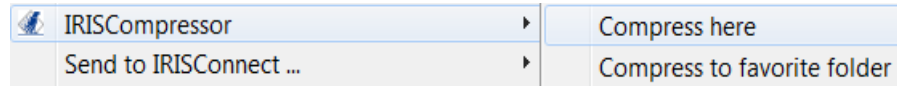
***Attention:** PDF files are compressed best when they contain images. PDF files that only contain text will hardly be reduced in size.

To compress your image or PDF files:

- Select the files you want to compress.

Note: IRISCompressor can compress a maximum number of 10 pages at a time. So, make sure the total number of pages does not exceed 10. For your information, 1 image corresponds to 1 page. If you try to compress documents that contain more than 10 pages, only the first 10 will be processed.

- Then right-click them and point to **IRISCompressor** in the menu that is displayed.



- Click **Compress here** to compress the file in the same location as the original.

Your files are converted to compressed PDF files by default.

Note: if you convert regular PDF files into compressed PDF files, the original files are replaced by the compressed versions.

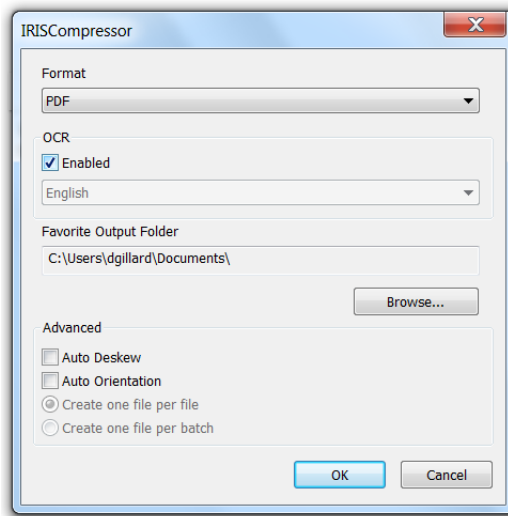
The output files IRISCompressor generates are by default **text-searchable**, thanks to I.R.I.S.' OCR technology.

Important note: Adobe Reader is recommended to open compressed PDF files on a mobile OS (e.g. on an iPad or Android tablet)

- Click **Compress to favorite folder** to compress the file to a specific folder. The default folder is your **Documents** (C:\Users**"YourUser"**\Documents).

To change the default settings:

- Right-click a file.
- Point to **IRISCompressor**, and click **Options**.



Format

Select the output format you want to generate: **PDF** or **XPS**.

Important note: Adobe Reader is recommended to open compressed PDF files on a mobile OS (e.g. on an iPad or Android tablet)

OCR

Select **Enabled** in case you want IRISCompressor to recognize the text in your images. IRISCompressor will then generate text-searchable output files. If OCR is disabled, IRISCompressor just compresses your images without recognizing the text.

Note: the OCR language is the one you selected during installation. To select a different OCR language, remove and reinstall the application while selecting a different language.

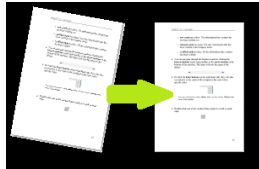
Note: make sure the OCR language you select corresponds to the language of your files. Selecting the wrong language will lead to unsatisfactory OCR results.

Favorite Output Folder

The Favorite Output Folder is the folder where IRISCompressor generates the compressed output files. By default, this folder is **C:\Users\YourUser\Documents**. Click the browse button to change it.

Advanced options

- Select **Auto Deskew** in case you are processing images that are not entirely straight - or "skewed". The **Auto Deskew** option straightens your images.



Note: the skew angle may not exceed 10 degrees.

- Select **Auto Orientation** in case you are processing a combination of images with vertical text and images with horizontal text. The **Auto Orientation** option rotates all images to the same direction.

Note: the images must contain text in order for IRISCompressor to do the orientation.

