



User Guide

LG EzSign 2.0 Editor

Contents

3 Before Using

- 3 What is LG EzSign 2.0 Editor?
- 3 Installing LG EzSign 2.0 Editor
 - 3 System Requirements
 - 4 Installation
 - 4 Delete

5 Using LG EzSign 2.0 Editor

- 5 Running LG EzSign 2.0 Editor
- 5 Using the Quick Guide
- 5 Starting EzSign 2.0 Editor
- 6 Creating EzSign Content
- 12 Network Setting

13 Managing Content

- 13 Saving Content on TV Memory
- 13 Viewing Content on TV
 - 13 Viewing Content Saved in the USB Device
 - 14 Viewing Content Saved on the TV Memory
 - 16 Checking the Location of the Content Being Played
- Deleting EzSign Content from the TV Memory
- Playing Video from Content

Before Using

What is LG EzSign 2.0 Editor?

LG EzSign 2.0 Editor allows you to create advertising content quickly and easily.

LG EzSign 2.0 Editor provides a wizard-type user interface for ease of use.

Start LG EzSign 2.0 Editor and simply follow the wizard's steps to create and preview your own content.

Content created using LG EzSign 2.0 Editor can be played on an LG EzSign TV without the need for any separate hardware or software, or it can also be played along with live broadcasting programs.

You can transfer content files from a PC to the TV using a wireless network.



LG EzSign 2.0 TV

Installing LG EzSign 2.0 Editor

System Requirements

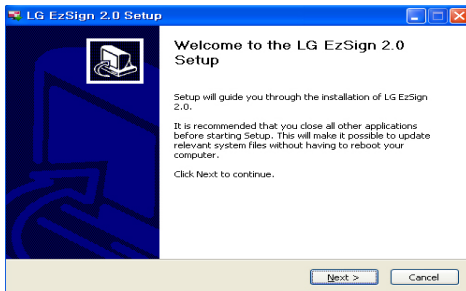
Item	Requirements
CPU	Pentium M, Pentium 4 or higher
RAM	512 MB or more
Network	N/A
Operating System	Windows XP SP2/SP3, Windows Vista, Windows 7

Installation

- 1 Go to **My Computer > Digital_LG > Software > EzSign 2.0 Editor** and double click the Setup.exe file.
- 2 Click the drop-down menu in the pop-up window to select a preferred language, and click **OK**.

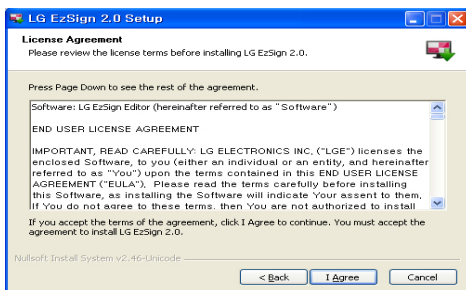


- 3 In the LG EzSign 2.0 Editor Wizard screen, click **NEXT**.

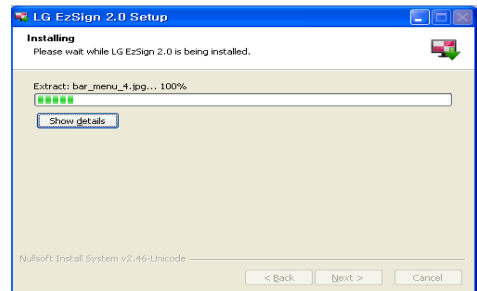
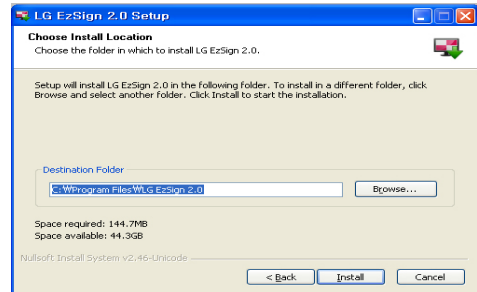


NOTE

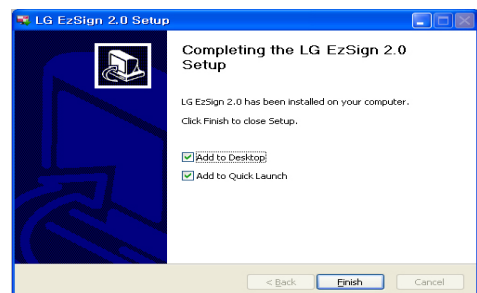
- If a previous version of the program is already installed on your computer, click **Yes** in the pop-up window to remove it before installing the current version. All the content and program information stored in the previous version will be deleted. Ensure that you save the content you need separately before removing/re-installing the program.
- 4 When the License Agreement screen appears, click **I Agree**.



- 5 Select the directory in which to install the program, and click **Install**.
The program will be installed automatically.



- 6 If Adobe AIR is not installed on your computer, an installation window appears. In the installation window, click **Accept** to install Adobe AIR.
 - If the latest version of Adobe AIR is already installed on your computer, click **Close** in the installation window.
 - If you do not have the latest version of Adobe AIR installed on your computer, click **Update** for a version update.
- 7 When the installation is complete, click **Finish**.



NOTE

- If you use Windows 7 as your operating system, reboot the computer after installing LG EzSign 2.0 Editor.

Delete

To remove LG EzSign 2.0 Editor from your computer, click **Start > All Programs > LG EzSign 2.0 Editor > Remove LG EzSign 2.0 Editor**.


Using LG EzSign 2.0 Editor

You can easily create and play advertising content using the LG EzSign 2.0 Editor.

Running LG EzSign 2.0 Editor

To run LG EzSign 2.0 Editor, go to **Start > All Programs > LG EzSign 2.0 Editor**.

NOTE

- To close LG EzSign 2.0 Editor, click  at the top right of the window.
- 1024 x 768 or higher resolution is recommended for LG EzSign 2.0 Editor. If not, the screen may not be displayed normally.

Using the Quick Guide

The Quick Guide window appears when starting LG EzSign 2.0 Editor for the first time. Help for using LG EzSign 2.0 Editor is available.

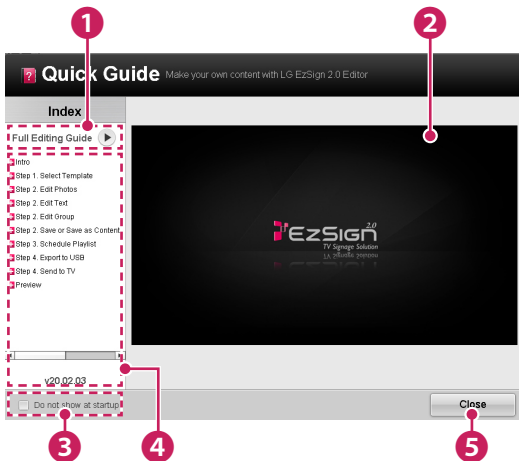
NOTE

- If you do not want the **Quick Guide** window to appear automatically when LG EzSign 2.0 Editor starts, click the **Do not show at startup** checkbox at the bottom left of the **Quick Guide** window.
- To see Help while using LG EzSign 2.0 Editor, click **Quick Guide** at the top right of the window.

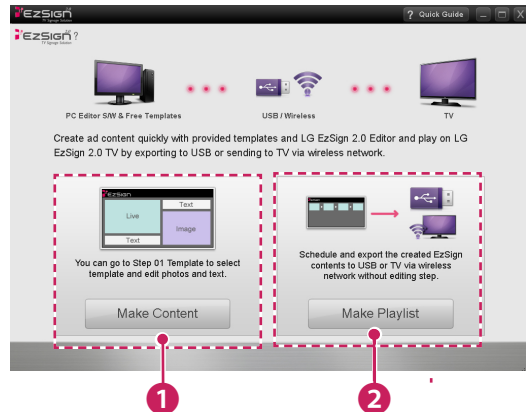
Starting EzSign 2.0 Editor

You can create a TV content file by starting LG EzSign 2.0 Editor or you can open and edit an existing content file.

The new or edited content file can be sent to the TV for playback using



- | | |
|---|---|
| 1 | Click Full Editing Guide to watch the video tutorial which shows how to create media content using LG EzSign Editor. |
| 2 | Video tutorial display area. |
| 3 | Click this checkbox if you do not want the Quick Guide to appear automatically next time you start the program. |
| 4 | Click a step in the editing guide pane to view a specific step in the video tutorial. |
| 5 | Close the Quick Guide . |



- | | |
|---|--|
| 1 | Click Make Content to begin the first step in creating an EzSign content file. Select and edit a template and export the content file. |
| 2 | By clicking Make Playlist , you can proceed to the exporting content files step without editing a template. You can set up the playback duration of existing content and export it to the USB device. |

Creating EzSign Content

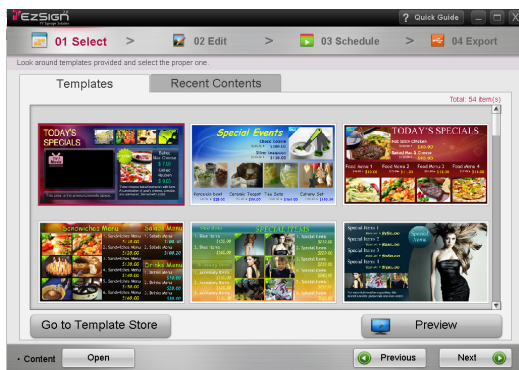
You can easily create content using default templates provided by LG EzSign 2.0 Editor. For detailed information about creating EzSign content files, see the EzSign Editor Quick Guide. Make sure you read the **NOTE** below before creating a content file.

NOTE

- If you place the cursor over a menu or option item while creating content, a help balloon appears.

Selecting Template or Content/Opening Content

You can select either user templates or the default templates provided by LG EzSign 2.0 Editor.

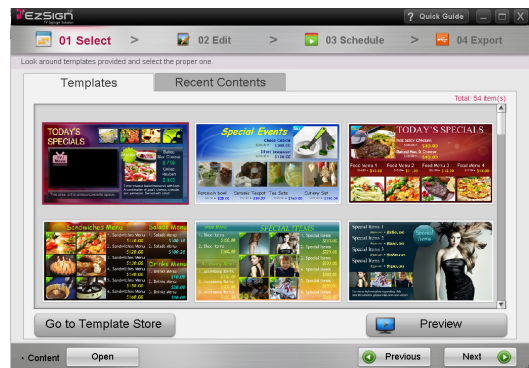


NOTE

- Click Buy Template at the bottom left of the screen to go to the template purchase site to buy and download a new template set. (If the user's computer is not connected to the Internet, the Buy Template button is not activated.)
- Close LG EzSign 2.0 Editor, and run the downloaded template set file (.exe file) to automatically add the new templates. Run LG EzSign 2.0 Editor once installation of the template set is complete. You will then see the added templates. (The newly added templates are displayed with a "new" symbol for 7 days.)
- If no template or content is selected, the **NEXT** button is disabled and you cannot proceed to the next step.
- Check the version when purchasing. If the template set version does not comply with the version of the editor, the template is not added to LG EzSign 2.0 Editor.
- Check if the latest version of EzSign 2.0 Editor is available and always use the latest version.

Opening Content

You cannot open a template file or an exported content file using **Open**. You can only open a saved file using the **Save** or **Save As** buttons.



NOTE

- You can use LG EzSign 2.0 Editor to open a content file saved by LG EzSign Editor.

Editing Content



NOTE

- The file formats supported for images are GIF, JPEG, PNG, and BMP.
 - Selected GIF or BMP files are automatically converted to JPEG files before being shown. The conversion may decrease the image quality depending on the quality of the original file.
 - 4-bit BMP files are not recommended due to poor quality.
 - Images larger than 4095 pixels in width or height are not allowed.
 - If you upload a single image or two of the same image to the editing zone, you cannot switch the image over. Do not display static images on the screen for long periods of time. This can cause image sticking.
 - Uploading photos saved in the Network folder to the photo area may not work, depending on the network settings. If an error occurs, upload the photos after copying them to the local PC.
- Editable areas (photo, text, photo and text group) are displayed to the left; to the right, property settings which you can additionally set for the selected area are displayed.
 - Each area -such as a photo or photo and text group -has two property sets. The two property sets will be displayed in turn when a content file is played. In this case, you can select the following options: 1) Configure the time to the right when the content file is displayed. 2) Select one image area from the two areas below. What you select on the right is displayed on the left.
 - If a photo is bigger than the image area, its aspect ratio is automatically adjusted, resulting in degrading the picture quality.
 - If two images which are the same are added to both areas, image-sticking may occur.
 - For the font area, the input length may vary depending on the font size.
 - If the entered text exceeds the maximum length of the input box without the Flow Speed function enabled, the text will be truncated when the content is displayed on TV.
 - You can only enter a limited amount of text. (Up to 2700 pixels). If the entered text exceeds the maximum length, the text input will be limited.
 - The following elements affect the text length.
Number of characters, font size, font type, bold/italic properties
 - When a font is installed in the system, it is also added to the Editor and displayed in the font list. It is recommended that you install the general TTF (True Type Font).
 - Depending on the font type or system environment, some characters cannot be displayed or will be displayed as □ while others can be displayed but without formatting. If this happens, you will need to select an existing font or install a new font which supports these characters so that they can be displayed properly.
 - Setting the input direction, also determines the text flow. When the direction is set from left to right, the text flows to the right whereas, if it is set to the opposite direction, the text flows to the left.
 - You can modify the text properties to the right; you can edit text to the left.
 - If you use the same color as the Panel Saver content text font, image-sticking may occur. It is recommended to use a different color.
 - In the left area, you can edit the text which appears when an image is selected in the right area.
 - If the content file being edited is not in the playlist, it is automatically added when you click the **NEXT** button.

Viewing Clearer Text

To see text more clearly, disable ClearType by following the steps below.

XP

- 1 Right-click anywhere on the desktop and select **Property** from the menu.
- 2 Click the **Appearance** tab, then click the **Effects** button.
- 3 Select **Use the following method to smooth edges of screen fonts** and click the down arrow to select **Standard** from the drop-down list.
- 4 Click **OK**, and then click **OK** again.

Vista

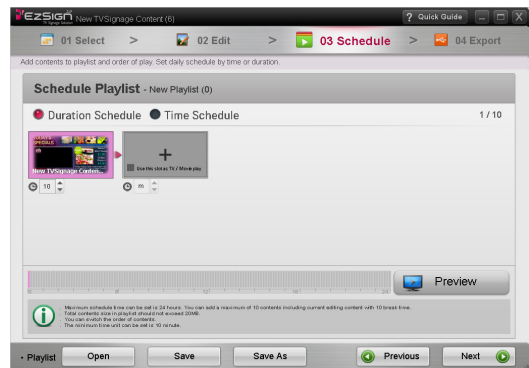
- 1 Click **Start** and go to **Control Panel > Appearance and Personalization > Personalization > Window Color and Appearance**, and open **Appearance Settings**. If the Appearance Settings dialog box is not displayed, at the bottom of the page, click **Open classic appearance properties**.
- 2 Click the **Effects** button.
- 3 In the Effects dialog box, select **Use the following method to smooth edges of screen fonts**.
- 4 In the list, select **Standard** then click **OK**.

Windows 7

- 1 Click **Start** and go to **Control Panel > Fonts > Adjust ClearType text**.
- 2 If **Adjust ClearType text** is selected, disable it.
- 3 On each page, click the text sample that looks best to you. On the last page of the tuner, click **Finish** to save the setup. When the admin password message is displayed, enter the password or click **OK**.

Scheduling Content Playback Order

You can set up the playback order by adding content files to the playlist. Set daily schedule to duration or time.

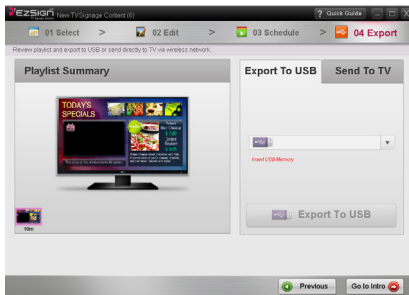


NOTE

- If you set the playback duration to 60 minutes or less, the Panel Saver function is disabled, which may cause image sticking on the screen. It is therefore recommended to set the playback duration to 70 minutes or longer.
- The playlist also contains the files required for the content file to be played.
- If a content file is not saved in the playlist, you cannot open a new playlist or save the playlist under a different name. This is possible only when the content file is saved in the playlist.
- A playlist must be 20 MB or less, and up to ten content files can be saved in a playlist.
- You can set the TV/Movie mode to be played in full-screen mode between content files. The total number of content files and TV/Movie files cannot exceed 20.
- You can add the same content file to the playlist more than once. The latest thumbnail may not be displayed for a content file which is not saved.
- If a playlist cannot be added due to the size or number of content files currently being edited, you cannot proceed to the next step by clicking the **NEXT** button.

Exporting to a USB device

You can create a list of the content files created using LG EzSign 2.0 Editor, set up the playback order and playback time of each file, and export to a USB device. Then, on TV, you can check the list and select the content files you want to play.



NOTE

- You can watch content exported using LG EzSign Editor on both LG EzSign and LG EzSign Gold TVs. However, some content files may not play normally. You cannot watch content exported using LG EzSign 2.0 Editor on LG EzSign TVs.
- If the **Preview** function is used for each step, the Preview window will be displayed for 5 minutes and then close automatically.
- The playback duration of the actual content file played on the LG EzSign TV may be different from what is configured in the editor.
- If you set the playback duration to 60 minutes or less, the Panel Saver function is disabled, which may cause image sticking on the screen. It is recommended to set the playback duration to 70 minutes or longer.
- If the USB storage device already contains a content list, the existing list is deleted and replaced by a new one.
- If multiple USB devices are connected, you can select the one you would like to use by clicking the **drop-down menu**.
- If no USB device is connected, the Insert USB Memory message appears at the bottom of the drop-down menu.
- Do not change the default settings on the USB device for the "save" directory location. If the "save" directory is changed it will prevent the content from playing automatically.

Panel Saver

Image sticking is when an image or outline of a previous image appears on the screen even after the image has changed. To prevent image sticking, LG EzSign 2.0 Editor plays the content whose right and left side images are switched each other in a different background color for five minutes after the content has been played for one hour. After five minutes, the content is played in its original format.



<Original Content>



Exporting to TV

Using a wireless network, you can transfer content files saved on a PC to the TV without having to connect a USB device. To use this function, you must first connect a wireless dongle to the TV in order to connect to the wireless network. 12 Page See the network configuration.) The PC must also be connected to a router via a wired or wireless connection.



NOTE

- If a wireless dongle is used, EzSign content files saved on a USB device cannot be played.
- If a content file is transferred via the wireless dongle, the file is immediately saved in the TV memory.
- The connection may not be established depending on wireless signal interference or strength.



IMPORTANT

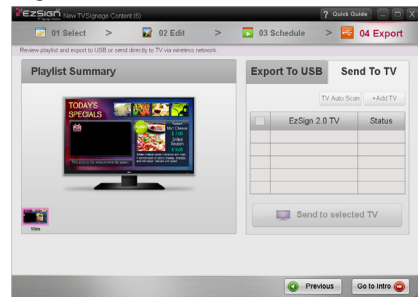
- If there is wireless signal interference, check whether the router is operating normally. When there is a wall or another router between the router and the TV, it may not work properly so remove any obstacles before installing it.
- When multiple TVs are connected to a single router, make sure that the router is working properly before setting a network.

- Wi-Fi connection is only available through an AP.
- External Internet environment is not supported.
- A password must be set for the router to prevent other devices from being connected.
- When content files in the existing playlist 1 are played on TV, contents files in another playlist 2 can be sent to the TV. When it happens, the files in the playlist 2 are played as scheduled by replacing the files being played without a pop-up window displayed.

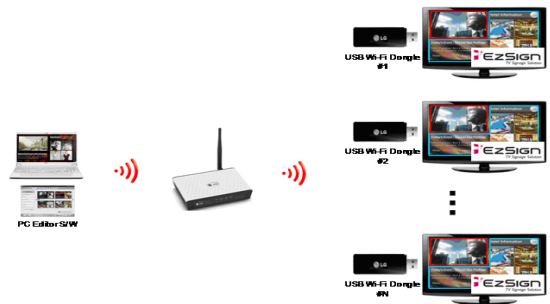
- 1 Connect a wireless dongle to the TV which is to be connected to the router. You can check the network connection status from the TV's network menu. (The network must be connected to the minimum gateway.)

- 2 Connect the PC to the router via a wireless/wired connection.

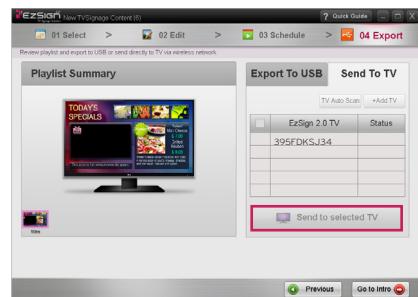
- 3 In EzSign 2.0 Editor, select **Send To TV**.



- 4 Select **TV Auto Scan** to automatically search for the TV connected to the router. You can manually enter an IP by selecting **+ Add TV** for connection.



- 5 Select the TV you want to connect and then select **Send to Selected TV**.



- 6 When the transfer is complete, the transferred content file is immediately played on TV.



IMPORTANT

- The TV name will first be displayed as its serial number. You can change it as desired (up to 16 characters) by clicking the cell.

NOTE

- In EzSign 2.0 Editor, you can select a TV to send content files to.
You can transfer the same or different content files to all the TVs scanned. After transfer, all the existing content files saved on the TV are replaced with the new files.
- If an error occurs during transfer, a pop-up message will appear and the previous file is played.
- The PC and the TV must be connected to the same router.
- The router IP address must be configured to 192.168.XXX.XXX.
- To check the TV's serial number, select **Menu > Customer Support > Product/Service Information**.
- If this is the first time Export to TV is used, an empty TV list will be displayed.
- If you proceed to another step and return during checking transfer availability, checking is resumed.
- The TV name will first be displayed as its serial number. You can change it as desired (up to 16 characters) by clicking the cell.
- It may take more than a minute to scan automatically according to the network environment. If the network is not strong enough, the **TV Auto Scan** function may fail to search all of the TVs connected to the router. If this happens, retry **TV Auto Scan** or select **Add +TV** to manually input an IP.
- TVs which already exist in the list are not added again, even when detected during Auto Scan.
- To add a TV manually, enter its IP address.
- Depending on the network or TV condition, the IP search may fail.
If this happens, check the network environment and try again.
- If the Preview function is used for each step, the Preview window will be displayed for 5 minutes and will close automatically.

Notes When Transferring to a TV

- It may take longer than 5 minutes depending on the size of content playlist to transfer or the network environment.
- Even when transferring to a TV in the list, the transfer may fail depending on the network or TV condition. If the transfer fails, check the error code displayed on the screen and follow its instructions.

Error code

Error code	Description	Actions
-100	TV busy	The TV is performing a network operation. Try again later. If this reoccurs, turn the TV off and back on.
-200	Network error	Check the PC, TV, and router network connections. If this reoccurs, turn the TV off and back on.
-300	Editor error	An error has occurred during file transfer. Restart EzSign Editor.
-400	TV error	Select Menu>General>Initial Setting to reset the EzSign TV.
-500	PC error	An error has occurred during file editing. Reboot the PC.
-600	TV error	An error has occurred during file reception. Restart the EzSign TV.

Network Setting

Wireless network connection

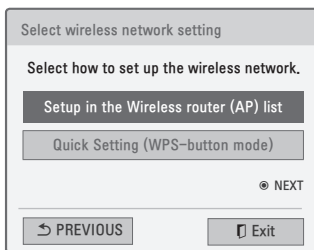
Connect a wireless dongle to configure the wireless network.

A wireless router must be installed and working at this time. Refer to the wireless router user manual to see how to install a wireless router.

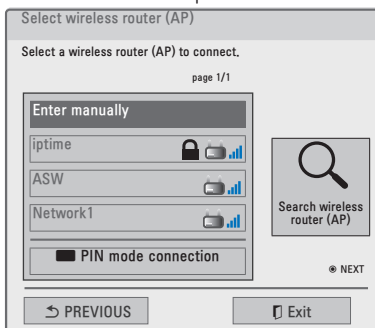
The network setting and connection may be different depending on the network environment. Set up the router according to the wireless router user manual.

Wireless network setting

- 1 Press the **Menu** button.
- 2 Use the \wedge , \vee , $<$, or $>$ button to select the **Network** and press the **OK** button.
- 3 Use the \wedge , \vee , $<$, or $>$ button to select **Network Setting** and press the **OK** button.
- 4 Use the \wedge or \vee button to select Setting from the wireless router (AP) list and press the **OK** button.



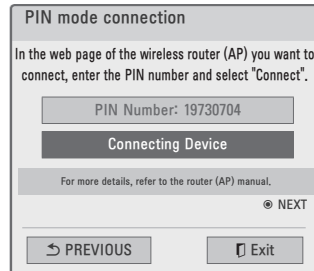
- 5 Use the \wedge , \vee , $<$, or $>$ button to select **Wireless Router** and press the **OK** button.



- 6 Enter a security key and press the **OK** button.

PIN mode connection

- 1 Follow steps 1 - 4 of "**Wireless network setting**".
- 2 Go to PIN mode connection.
- 3 In the web page of the wireless router (AP) you want to connect, enter the PIN number displayed on the screen and select **Connect**.



- 4 When the network setting is complete, select re-connection. The new network is then set up.
- 5 Select IP Auto Setting or IP Manual Setting.
 - If you select IP Manual Setting, manually enter information such as an IP address.
- 6 When this is complete, press **Exit**.

Quick Setting (WPS-button mode)

You can use a nearby wireless router, without having to select a wireless router's (AP) name.

- 1 Follow steps 1 - 3 of "Wireless network setting".
- 2 Use the \wedge or \vee button to **select Quick Setting (WPS-button mode)** and then press the **OK** button.
- 3 Press the WPS-button mode button of the wireless router (AP) you want to connect and then click **Connect**.
- 4 Follow steps 5 - 6 of "PIN mode connection".



IMPORTANT

How to Enter Letters or Numbers

- * You can move the cursor on the screen to enter the required items, by pressing the Volume button on the remote control.

Managing Content

* The On-Screen Display (OSD) in this manual is an example to help you understand how to operate the product, and may be slightly different from your projector depending on models.

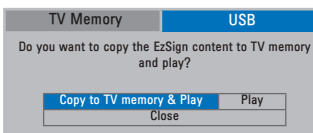
Saving Content on TV Memory

- 1 Connect the USB device on which the EzSign content is stored to the TV USB port. You will see the following on the TV screen.



- 2 Select **EzSign TV** using the TV remote control.
- 3 Select **Copy to TV memory & Play** in the USB tab to save the content files exported to the USB device in the TV memory.

The files are saved in the TV memory and the list of files available for playing is displayed automatically.



NOTE

- The **USB** tab is selected by default and shown when a USB device is connected to TV.
- If the TV memory does not have a sufficient free space, a **Copy Failed!** message is displayed for 5 seconds to return to the previous screen.



IMPORTANT

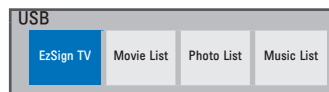
- While loading or copying data to/from a USB device or dongle, if you remove it forcefully, EzSign may not work properly.

Viewing Content on TV

You can play the content saved in the USB device or TV memory on LG EzSign TV. If you play a file from the USB device while a file in the TV memory is being played, the currently playing file stops and the file on the USB device starts playing. You can play the TV content again while the USB content is playing.

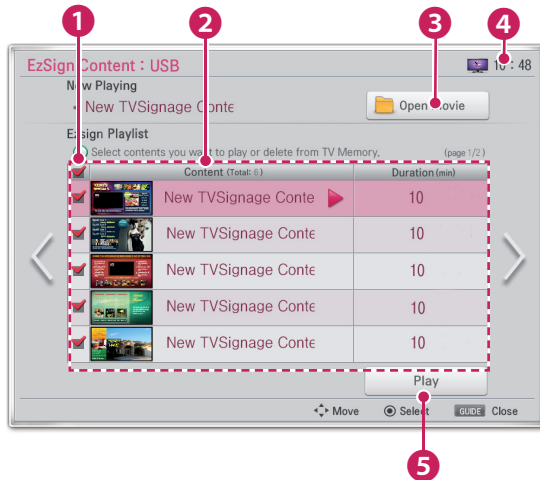
Viewing Content Saved in the USB Device

- 1 Insert the USB device containing the EzSign TV content into the USB port on the television. The following is displayed on the TV screen.



- 2 Select **EzSign TV** using the TV remote control.
- 3 Select **Play** from the **USB** tab.

You can set the schedule mode to either duration or time. If the schedule is set to duration, the content file is played in sequence from the first file in the list; if it is based on time, it is played according to the time set on the TV. In addition, when the schedule is set to time but no time is set up on the TV or if the time is not correct, the file may not be played at the expected time. Make sure you use the schedule mode after correctly setting the current time on the TV.



You can select the files you want to play from the file list using the TV remote control.

Press the Play button after selecting the files you want to play, and the selected files are played in order. (However, if the schedule mode is set to time, the files are played according to the time currently set.)

Once all the files have been played, the first one starts again.

1	Select or deselect content files using the remote control.
2	Show the file information of the files included in the list, such as name, playback time, etc.
3	Check the video list and select videos to play.
4	Current time set on the TV. If the time is not correct, set it again by going to Menu > Time .
5	Play the selected file.

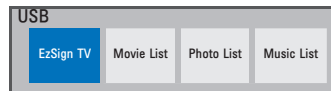
NOTE

- It is recommended that you copy files to the TV memory before playing them, as playing directly from the USB memory for an extended period of time may cause the device to overheat.
- The files in the playlist are played by either duration or time, according to the schedule.
- The Program Guide/Information keys are always available.
- Press the Channel and Volume Control keys to make adjustments. However, the content keys may not work while a channel is switched over.
- If you press the Volume or Channel key while the panel saver is displayed, the screen may appear abnormally.

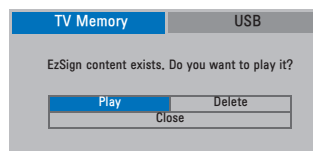
Viewing Content Saved on the TV Memory

You must first copy the content files to the TV memory.

- Press the **Menu** button on the remote control.
- Select **My Media** using the remote control.
- Select **EzSign TV**.



- Select **TV Memory** tab.



- Select **Play**.

The list of playable files is displayed as follows, and the files are played in sequence from the first one in the list.

You can set up the schedule mode to either duration or time. If the schedule is set to duration, the content file is played in sequence from the first one in the list; if it is based on time, it is played according to the time set on the TV. In addition, when the schedule is set to time but no time is set on the TV or if the time is not correct, the file may not be played at the expected time. Make sure you use the schedule mode after correctly setting the current time on the TV.

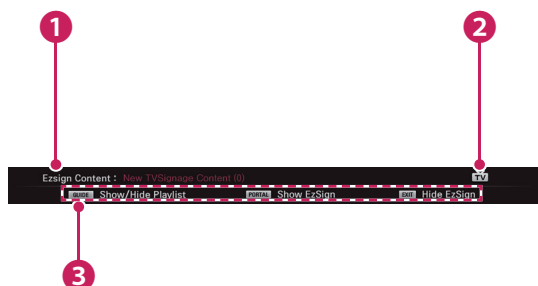


NOTE

- You can switch to EzSign mode or TV mode or see the file information while a file is being played from a USB device or the TV memory by pressing any button on the TV remote control.
- When you turn on a TV which has been set to the factory default, any content files on the TV are automatically played.
- If there are several files in the playlist, you can proceed to the next page.

Exit	Returns to the previous TV mode or Movie mode when the file is being played.
Portal	Switches to EzSign mode and the file is played.
Program Guide	Displays or hides the file list and playback information on the TV screen.
Information	Displays or hides the information on the TV remote control buttons and the file status information while being played on the TV screen.

When you press the **Information** button on the remote control, the following screen is displayed.

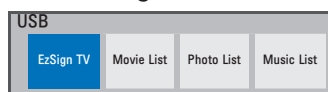


1	Shows the content title.
2	Displays the play mode. (with an EzSign mode / TV mode / Movie mode icon)
3	Provides the information on the remote control button.

- EzSign mode indicates that a content file is being played. You can play the file at any time since the **Program Guide** and **Information** buttons are always available.
- In TV mode, the content file is stopped and a regular TV program is displayed in full-screen mode. You can play the file at any time since the **Program Guide** and **Information** buttons are always available.
- In Movie mode, the content file playback is stopped, just as in TV mode, and the movie is played in full-screen mode. However, the control buttons (play, stop, rewind, etc.) related to playing movies are only available in this mode.

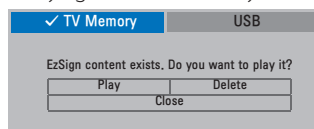
Checking the Location of the Content Being Played

- Press the **Menu** button on the TV remote control while playing the content file.
- Select **My Media** using the remote control.
- Select **EzSign TV**.

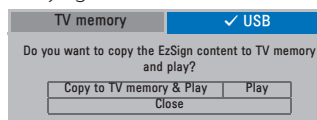


- The highlighted tab with the ✓ symbol indicates the location of the file currently being played.

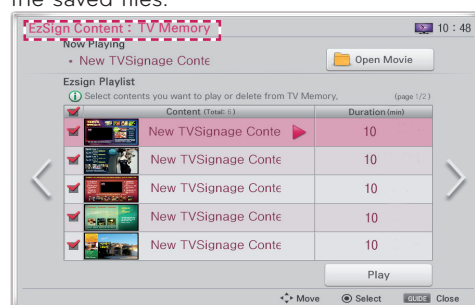
<Playing from TV memory>



<Playing from USB device>

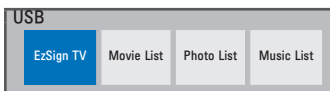
**NOTE**

- Press the **Program Guide** button on the remote control to check the EzSign Content information at the top of the playlist screen and locate the saved files.

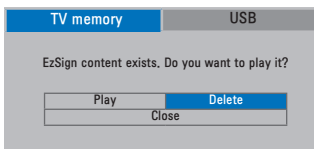


Deleting EzSign Content from the TV Memory

- 1 Press the **Menu** button on the TV remote control.
- 2 Select **My Media** using the remote control.
- 3 Select **EzSign TV**.



- 4 Select **TV Memory** tab.



- 5 Select **Delete**.
- 6 In the pop-up window, enter the 4-digit TV password, and select **Close**.



After the password input, the message below appears for 5 seconds before the TV is turned off and on again automatically.



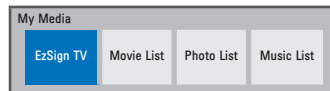
NOTE

- For more details on how to set and change a TV password, refer to the TV Manual.
- You cannot delete individual content files separately. All files saved in the TV memory are deleted when you select Delete.

Playing Video from Content

You can play a video file while playing a content file. Play the content file first. Refer to the TV Manual for more information on how to play a video file.

- 1 Press the **Menu** button on the TV remote control.
- 2 Select **My Media** using the remote control.
- 3 Select **EzSign TV**.



- 4 Play a content file.
- 5 When a content file is played from USB, check if a video file is stored on the connected USB device. If a content file is played from the TV memory, you can connect a USB device which holds another video file.
- 6 After pressing the **Program Guide** button on the remote control, select Open Movie on the screen.
- 7 When you select a video file to play, the video is played along with the content file.

