

# **LIBRATONE DIVA**

**OWNER'S MANUAL**

## INDEX

3 Congratulations

4 FullRoom™

5 AirPlay / Bluetooth / DLNA

6 Introduction

**7 Quick AirPlay Setup (Wi-Fi)**

**8 Quick DLNA Setup**

**9 Quick Bluetooth Setup**

**10 TV Setup**

11 IR Learning

12 Libratone App

13 Factory reset

14 Cover change

15 Wall mount

16 Troubleshooting / Register / Warranty

17 Speaker specs

18 Wi-Fi / Bluetooth specs

## CONGRATULATIONS!

### YOU HAVE TAKEN A LEAP OF FAITH.

A step towards a world of wireless bliss.

It takes a great deal of courage to liberate yourself from the shackles of speaker cables and ordinary stereo systems.

But you have jumped right into it. **FOR THIS WE SALUTE YOU.**

We have done everything in our power to make your Libratone sound system as simple and user friendly as possible. Hopefully this manual will answer any questions you might have.

Thank you for buying our product. Thank you for joining the revolution.

## FULLROOM™



Libratone Diva is based on a patented audio technology. We call it FullRoom™ sound.

Allow us to explain:

Regular speakers have closed cabinets. They push the sound waves in one direction - forward.

Libratone Diva, on the other hand, plays like an acoustic instrument, dispersing sound waves in multiple directions, giving you a 360° sound experience.

FullRoom™ technology means that you only need one sound source to get a room full of sound.

Whether you hang it on the wall, place it on a shelf or put it on the ground you get the same amazing sound quality.

Placing Libratone Diva close to a wall will reflect the sound off the wall. This gives you a deeper bass and an even fuller soundscape.

## MUSIC AT HOME



AirPlay is a technology designed by Apple to transmit audio within a Wi-Fi network. Once your Libratone speaker is connected to your home Wi-Fi, you can stream music via services like Spotify, Deezer, WiMP, TuneIn, Rdio, iTunes etc. from your iPhone, iPad, iPod touch or computer. This means that you have your entire music and movie library in the palm of your hand, ready to be set free.

## MUSIC ON THE GO



Bluetooth allows you to wirelessly play music in CD-quality from any iOS, Android or Windows Phone device to your Libratone speaker. By enabling a direct connection between the audio source and the speaker, the need for a wireless network is eliminated.

Pairing is easily achieved through NFC on your Android or Windows Phone device or through the Bluetooth menu on your iOS device.

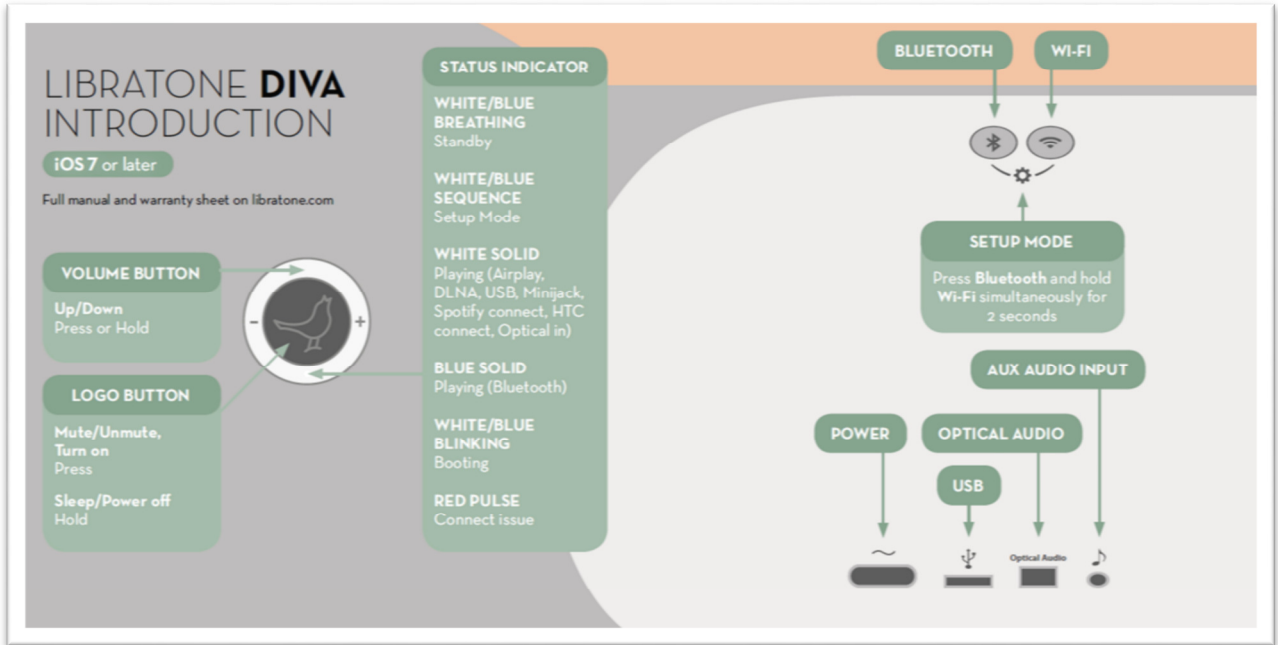
## DLNA



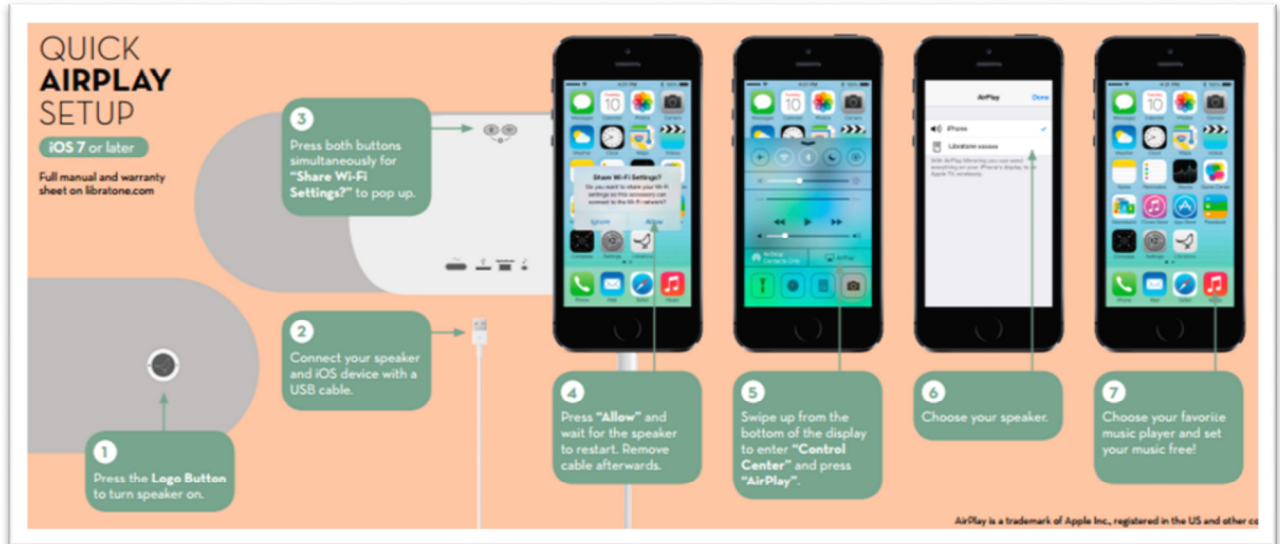
Built-in DLNA technology allows you to stream music to your Libratone speaker from most devices using Android 4.0 or later, Blackberry OS 10 or later, and computers running Windows 7 or 8.

For more info go to [www.libratone.com/dlna](http://www.libratone.com/dlna)

## INTRODUCTION



## QUICK AIRPLAY SETUP



## QUICK DLNA SETUP

**QUICK DLNA SETUP**  
Android / PC  
Full manual and warranty sheet on [libratone.com](http://libratone.com)

- 1 Press the Logo Button to turn speaker on.
- 2 Press and hold the **Wi-Fi button** for two seconds until the **Logo Button** pulses white. When it emits a white sequence (takes up to 20 seconds) it's ready.
- 3 Open "**Wi-Fi settings**" and connect to the speaker's network.
- 4 Open a browser and type "**192.168.1**" and follow the **Wi-Fi setup** instructions.
- 5 Wait for your speaker to restart. The **Logo Button** breathes white when ready.
- 6 Open a **DLNA Music Player**. Select your speaker and press play to set your music free.



## QUICK BLUETOOTH SETUP

### QUICK BLUETOOTH SETUP

Bluetooth® devices

- 1 Press the **Logo Button** to turn the speaker on.
- 2 Press and hold the **Bluetooth Button** for two seconds until the **Logo Button** emits a blue sequence.
- 3 Unlock your **NFC (Near Field Communication)** phone or tablet and hover over the **Logo Button** ...
- 4 ... OR connect to the speaker through the **"Bluetooth settings"** menu.
- 5 Choose your favorite music player and set your music free!

The Bluetooth® word mark and logos are owned by the Bluetooth SIG, Inc. and any use of such marks by Libratone A/S is under license.

## TV SETUP



Connecting your new Libratone Diva with your TV is easy. For digital sound simply connect to your TV with an optical cable. This is a great way of upgrading the mediocre sound of your TV

If volume on your TV optical out is not controlled by your normal TV remote - you can use **IR Learning** in Libratone App to teach your IR TV remote to control speaker volume.

If you prefer analog setup - a regular mini jack does the trick. This is a popular solution since this most often enables you to use your normal TV remote control to adjust TV volume.

If you start streaming AirPlay to your Diva from a mobile device or computer - the sound source will automatically switch from your TV to AirPlay streaming. AirPlay is prioritized. So make sure nothing is streaming, when you want to use AUX.

## IR Learning

IR Learning allows you to adjust or mute the volume of your Diva using your existing TV remote.



Useful when playing to the speaker via an optical cable, IR Learning removes the burden of having to manually connect to the speaker via the Libratone app when the volume is not right.

**Use IR Learning to pair your remote with your speaker.  
Control Volume up/down and mute.**

- 1** Press Volume up button ✓  
**Learned**
- 2** Press Volume down button ✓  
**Learned**
- 3** Press Mute button

Easily configure IR Learning in the Libratone app by connecting to your speaker and navigating to **Settings > IR Learning**.

## LIBRATONE APP



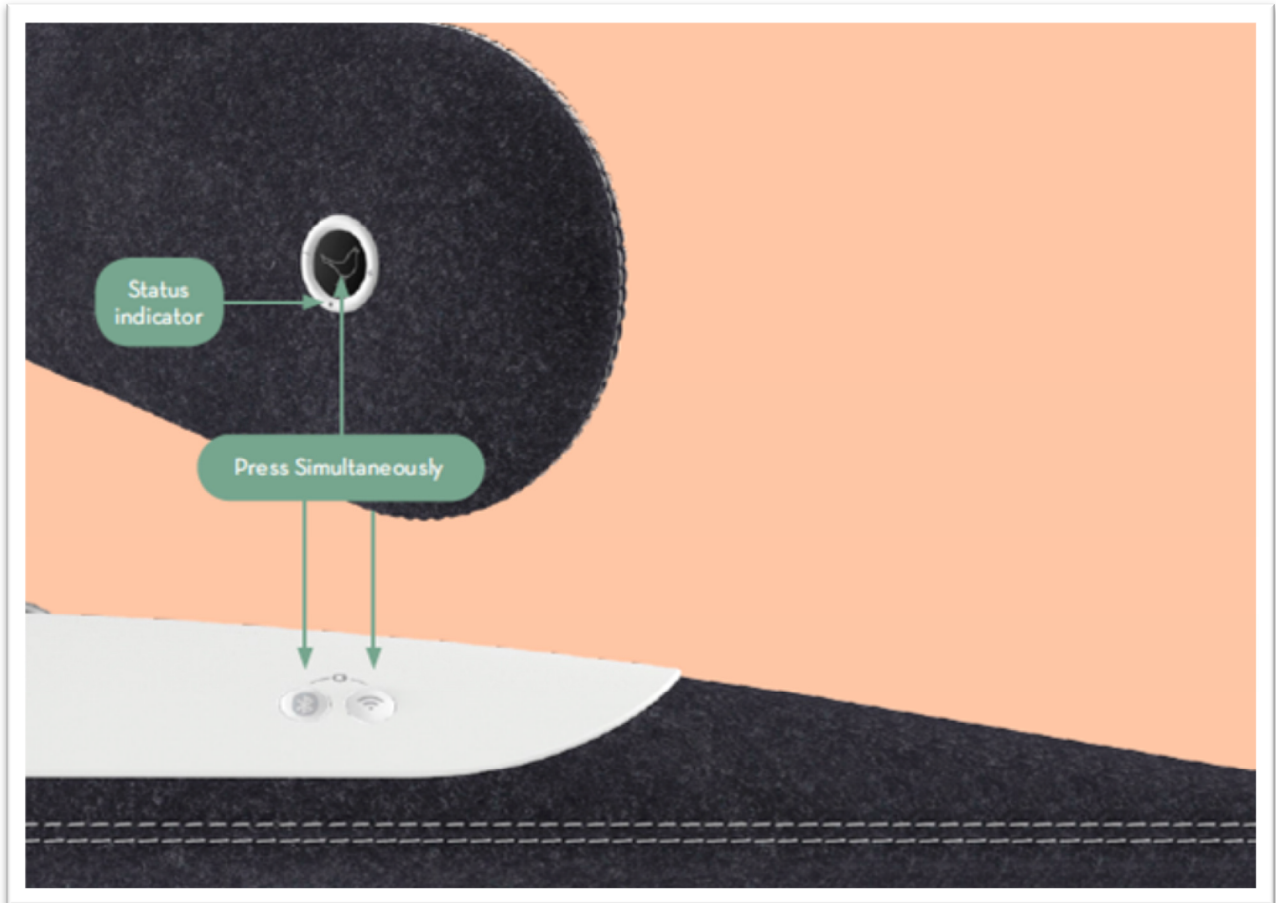
Add another dimension to your Libratone Diva by downloading the free Libratone app from the Apple App Store to your iOS device.

The Libratone app keeps your speaker firmware up to date and allows you to customize the sound to your taste in music and acoustic surroundings, enhancing the FullRoom™ experience.

The Libratone app is also available for Android.



## FACTORY RESET



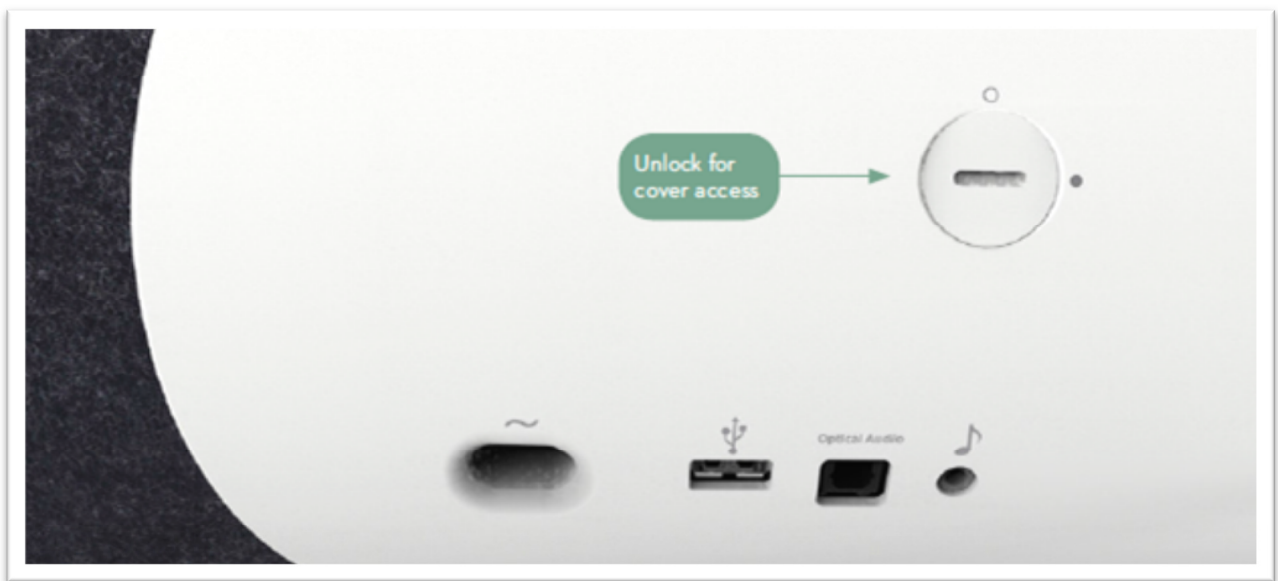
To clear all speaker settings on your Libratone Diva you need to perform a factory reset.

- Press and hold the “**Bluetooth Button**”, the “**AirPlay Button**” and the “**Logo Button**” simultaneously until the “**Status Indicator**” starts blinking WHITE or BLUE, then release the buttons.
- When the “**Status Indicator**” shows a WHITE or BLUE sequence after approx. 20 seconds, your speaker has been factory reset and is ready for setup.

## COVER CHANGE

Diva comes in Libratone's signature Pepper Black. Extra covers are sold separately in a range of colors to suit all tastes and complement any kind of interior. Visit Libratone webshop to buy a different color version.

When changing the speaker cover "*gentle is the name of the game*".

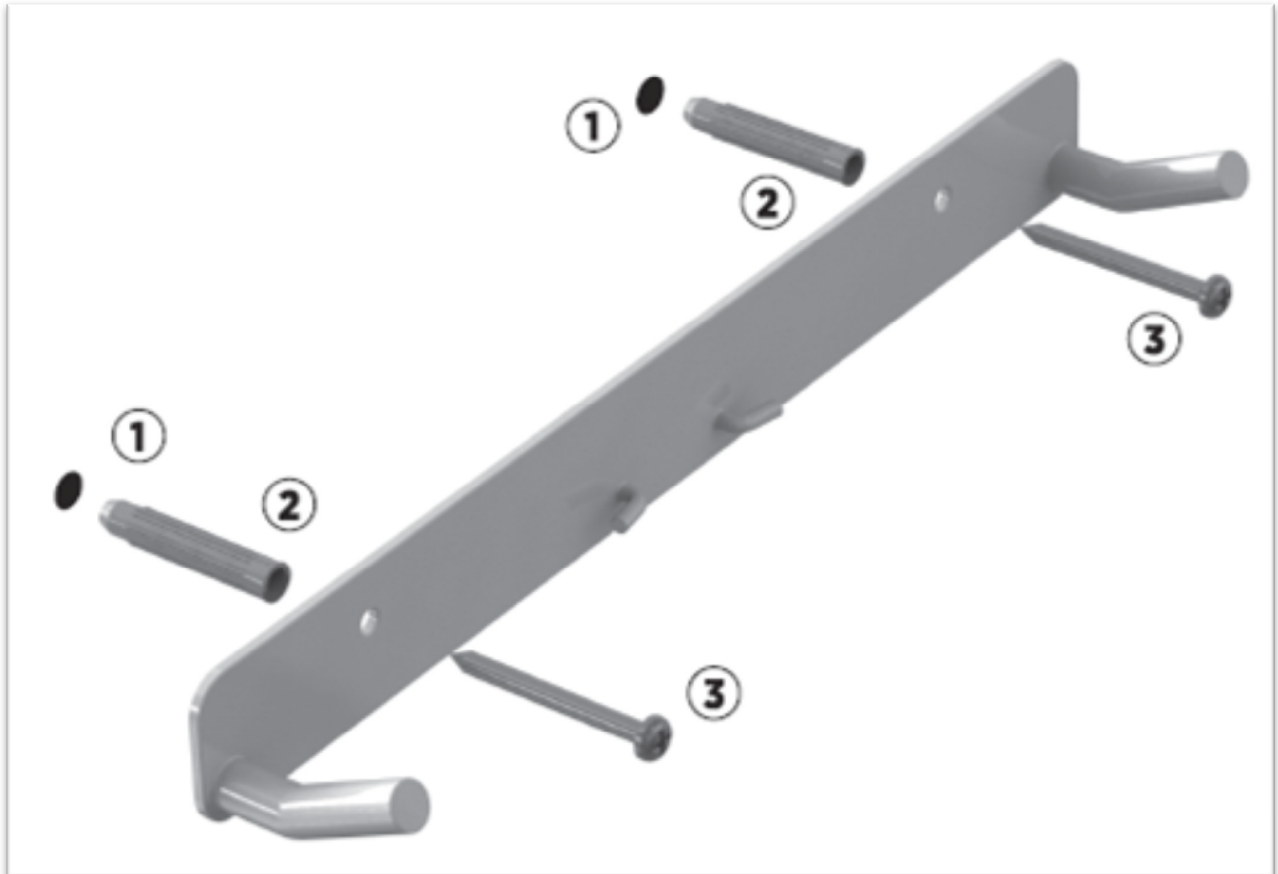


Remove power cable, stand and the 2 screws on the backside of the speaker. Once the backplate is removed - unzip the wool cover.

To dress the speaker again, follow the above steps backwards.

Please find the cover change video at our support page: [www.libratone.com/DivaCover](http://www.libratone.com/DivaCover)

## WALL MOUNT



Ensure that the wall is able to support the weight of the system.

- Drill two 8 mm holes in your wall and push in the rawplugs.(1) (2)
- Make sure that the wall mount is level.
- Mount the wall mount on the wall. (3)

## TROUBLESHOOTING

Our hearts and souls are in your Libratone Diva. However, if it's acting up and you can't find your answer here, please visit our support page at:

[www.libratone.com/support](http://www.libratone.com/support)

## REGISTER

To help us give you the best service possible, we encourage you to register your product at:

[www.libratone.com/free-cover](http://www.libratone.com/free-cover)

## WARRANTY

Don't worry. Your Libratone Diva is covered by our warranty. Since the warranty follows national laws, it differs from country to country. For warranty information regarding your country please visit:

[www.libratone.com/warranty](http://www.libratone.com/warranty)

Warranty information is occasionally printed on your invoice as well.



## SPEAKER SPECS – LIBRATONE DIVA (LT-500)

### TECHNOLOGY

Wireless active speaker with built-in Digital Signal Processing and Digital Amplification. Implements Libratone patent pending FullRoom™ acoustic technology for exceptional sound performance.

### WIRELESS

AirPlay lets you stream audio wirelessly from your iPad (3rd generation), iPad 2, iPad, iPhone 6 and 6 plus, iPhone 5, iPhone 4S, iPhone 4, iPhone 3GS, iPod touch (5th, 4th and 3rd generations) with iOS 4.3.3 and iTunes 10.2.2 (Mac and PC) or later. DLNA lets you stream audio from most Android devices running 4.0 or later.

### INPUTS

AirPlay, Bluetooth, DLNA, USB audio (iPod, iPhone and iPad) and 3.5 mm optical and analog input. Spotify Music and QQ Music.

### DRIVE UNITS

1x5" bass, 2x3" midrange and 2x1" ribbon based tweeters. Built-in subwoofer.

### AMPLIFIER

225W total. 2.1 Stereo system with FullRoom™ DSP optimization and Full Digital Amplification.

### ACOUSTIC PERFORMANCE

Frequency range: 40-20.000 Hz.  
Max. output: 99 dB SPL/ 1m.

### POWER

100-240 Volt AC, 50/60Hz.  
Power consumption 20W internal power supply.

### DIMENSIONS

Height: 15.8 cm / 6.2"  
Width: 98.8 cm / 39"  
Depth: 10.0 cm / 4"

### WEIGHT

5.5 kg. / 12.1 pounds.

## WI-FI SPECS – LIBRATONE DIVA (LT-500)

### WLAN STANDARDS

IEEE 802.11b, IEEE 802.11g.

### FREQUENCY BAND

2.412 – 2.472 GHz (2.4GHz ISM Band, 13 Channels),  
Channel 1 - Channel 13,  
North America FCC, Japan Telec, Europe ETSI

### MODULATION

802.11b mode (DS-SS: IEEE 802.11b)  
802.11g mode (OFDM: IEEE 802.11g)

### TRANSMISSION SPEED

802.11b mode: 11Mbps, 5.5Mbps, 2Mbps, 1Mbps  
802.11g mode: 54Mbps, 48Mbps, 36Mbps, 24Mbps, 18Mbps, 12Mbps, 9Mbps, 6Mbps

### TX POWER

802.11b mode: 16.5dBm, +/-1dB  
802.11g mode: 15.0dBm, +/-1dB

### POWER-ON RAMP

< 2us

### RF CARRIER SUPPRESSION

< 15dBc

### TX EVM

802.11b mode: <-22dB.  
802.11g mode: <-25dB

### RX SENSITIVITY

802.11b mode: <=-82dBm @ 1Mbps, <=-81dBm @ 2Mbps, <=-81dBm @ 5.5Mbps, <=-78dBm @ 11Mbps

802.11g mode: <=-82dBm @ 9Mbps, <=-81dBm @ 18Mbps, <=-75dBm @ 36Mbps, <=-70dBm @ 54Mbps

## BLUETOOTH SPECS

### FREQUENCY BAND

2,402 MHz to 2,480 MHz

### MODULATION

8 DPSK, PI/4 DQPSK, GFSK

### MAXIMUM DATA RATE

3Mbps (typical 1.6Mbps)

### OPERATING RANGE

Approx. 10m

### RF SENSITIVITY

0.1% BER at -88dBm

### TRANSMIT POWER

BER/EDR Class2 <4dBm, BLE<10dBm

THIS IS IT!  
TIME TO SET YOUR  
MUSIC FREE  
WE WISH YOU  
GODSPEED



AirPlay, the AirPlay logo, iPad, iPhone, iPod and iPod touch are trademarks of Apple Inc., registered in the U.S. and other countries. Libratone and FullRoom are registered trademarks of Libratone A/S.

# LIBERTY

# LIBRATONE

**DIFFERENT SPELLING. SAME MEANING.**