

Using MobiSystems® OfficeSuite with AirWatch

Contents

1	Overview	3
2	Targeted Audience	3
3	Android	4
3.1	Prerequisites	4
3.2	System requirements	4
3.3	Setup	4
3.4	What should end users know?	7
4	Apple iOS	8
4.1	Prerequisites	8
4.2	System requirements	8
4.3	Setup	8
4.4	What should end users know?	10

1 Overview

Using MobiSystems® OfficeSuite with AirWatch provides information about setting up MobiSystems® OfficeSuite in the AirWatch Console and the supported configurations that will ensure your corporate data is safe and secured.

2 Targeted Audience

This document is aimed at MobiSystems® business clients that use AirWatch as their EMM provider.

3 Android

3.1 Prerequisites

- Android for Work account
- AirWatch Console account

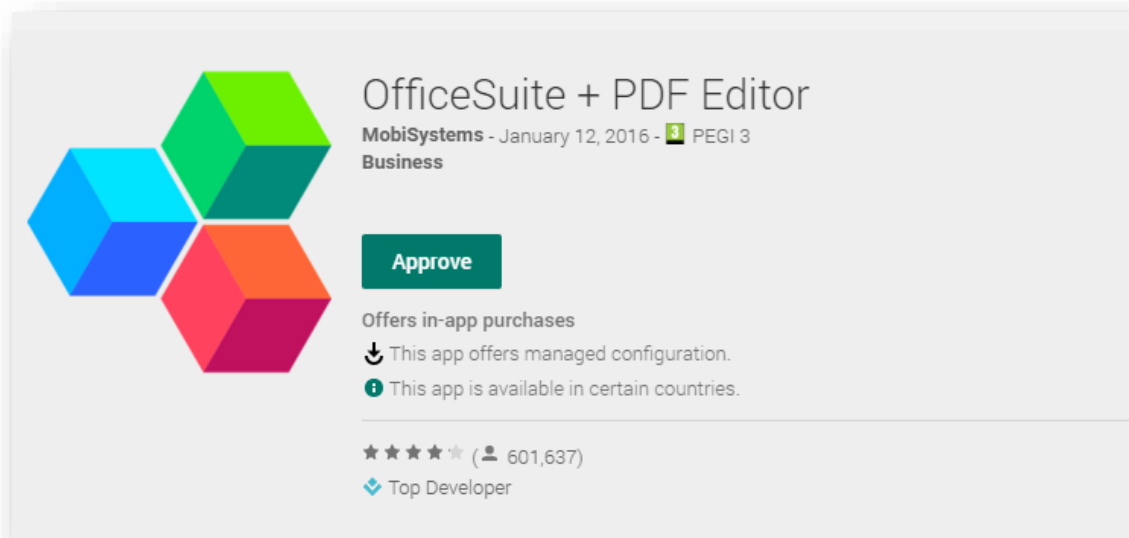
3.2 System requirements

Managed devices must meet the following requirements:

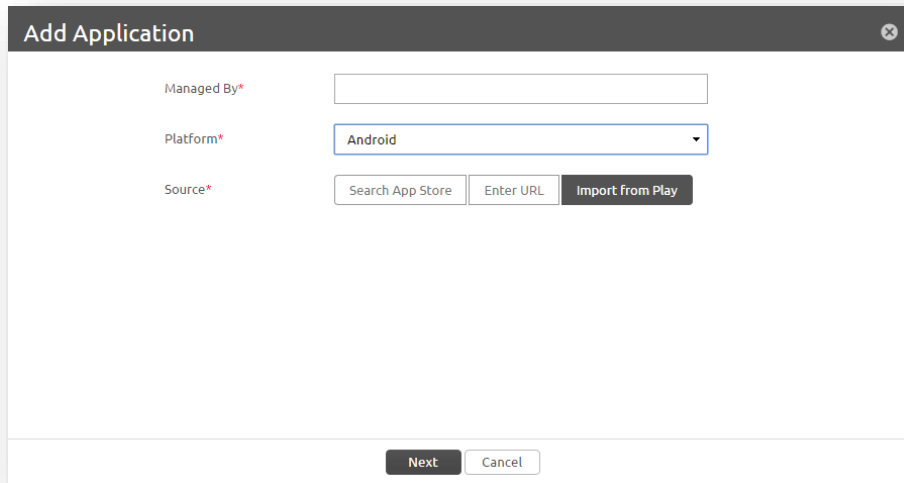
- Android 5.0 or later.
- The hardware manufacturer has enabled native support of Android for Work.
- The device has multi-user support.

3.3 Setup

1. Login to your Google Play for Work account.
2. Go to [MobiSystems® OfficeSuite Google Play for Work listing](#).
3. Press the **Approve** button to make MobiSystems® OfficeSuite available to your employees. For more information please refer [Manage free Google Play for Work apps](#).



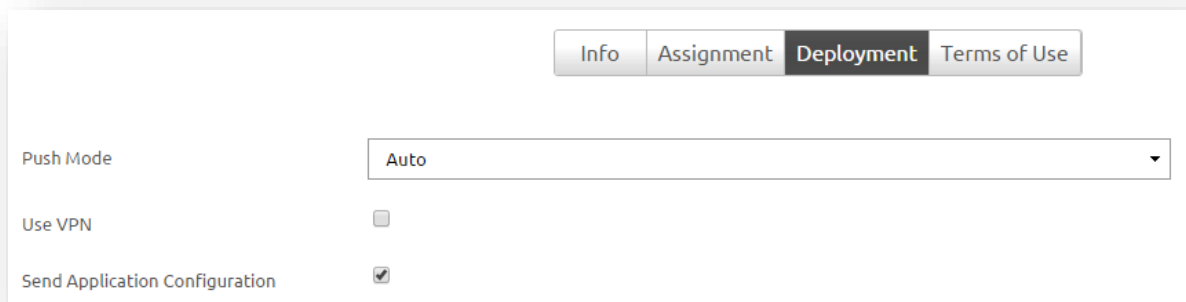
4. Login to the AirWatch Console.
5. Link your Google Play for Work account to AirWatch, following the *Android for Work Guide v8_2.pdf* (or a newer version) by AirWatch.
6. Navigate to Apps & Books > Applications > List View > Public and select '**Add Application**'.
7. View the organization group from which the application uploads in '**Managed By**'.
8. Select the Platform – **Android**.
9. Select the Source – '**Import from Play**' and press **Next**.



The 'Add Application' dialog box contains the following fields and buttons:

- Managed By***: A text input field.
- Platform***: A dropdown menu with 'Android' selected.
- Source***: Three buttons: 'Search App Store', 'Enter URL', and 'Import from Play'.
- Next** and **Cancel**: Buttons at the bottom right.

10. Choose '**OfficeSuite + PDF Editor**' and press **Next**.
11. Adjust the application metadata.
12. Navigate to the '**Deployment**' section.
13. Check the '**Send Application Configuration**' checkbox which will expand a new section.



The 'Deployment' section includes the following tabs and settings:

- Tabs**: Info, Assignment, **Deployment** (active), Terms of Use.
- Push Mode**: A dropdown menu with 'Auto' selected.
- Use VPN**: An unchecked checkbox.
- Send Application Configuration**: A checked checkbox.

14. Using the '**Add**' button, add the needed number of rows.
15. Fill in the desired restrictions:

Application Configuration

Configuration Key	Value Type	Configuration Value	
<input type="text" value="productKey"/>	String ▼	<input type="text" value="XXXXXXXXXXXX"/>	✕ + Insert Lookup Value
<input type="text" value="SupportClouds"/>	Boolean ▼	<input type="text" value="false"/>	✕ + Insert Lookup Value
<input type="text" value="SupportPrint"/>	Boolean ▼	<input type="text" value="false"/>	✕ + Insert Lookup Value
<input type="text" value="SupportSendFile"/>	Boolean ▼	<input type="text" value="false"/>	✕ + Insert Lookup Value
<input type="text" value="SupportConvertToPdf"/>	Boolean ▼	<input type="text" value="false"/>	✕ + Insert Lookup Value
<input type="text" value="SupportConvertFromPdf"/>	Boolean ▼	<input type="text" value="false"/>	✕ + Insert Lookup Value
<input type="text" value="SupportFTP"/>	Boolean ▼	<input type="text" value="false"/>	✕ + Insert Lookup Value
<input type="text" value="SupportLocalNetwork"/>	Boolean ▼	<input type="text" value="false"/>	✕ + Insert Lookup Value
<input type="text" value="SupportRemoteShares"/>	Boolean ▼	<input type="text" value="false"/>	✕ + Insert Lookup Value
<input type="text" value="SupportCastPresentation"/>	Boolean ▼	<input type="text" value="false"/>	✕ + Insert Lookup Value

+ Add

Configuration Key	Value Type	Configuration Value
productKey	String	License key*
SupportClouds	Boolean	True / False
SupportPrint	Boolean	True / False
SupportSendFile	Boolean	True / False
SupportConvertToPdf	Boolean	True / False
SupportConvertFromPdf	Boolean	True / False
SupportFTP	Boolean	True / False
SupportLocalNetwork	Boolean	True / False
SupportRemoteShares	Boolean	True / False
SupportCastPresentation	Boolean	True / False

*The license key is provided by MobiSystems® after purchase. The license key can be used to activate OfficeSuite on a specified number of devices based on the purchase. If no valid ACE product key is entered into the productKey field, the above restrictions are disregarded and it acts as a pure Free/Premium version. Otherwise, if the license key is valid the above restrictions are applied. By default, all restrictions are set to False, and can be changed from the AirWatch Console.

Note

MobiSystems® OfficeSuite requires online activation. If your company uses VPN, Proxy, Firewall or any other restrictive measures to filter your network traffic, please make sure that the <http://www.mobisystems.com/> domain is accessible from the end users' devices.

16. Press **Add** to confirm the change.

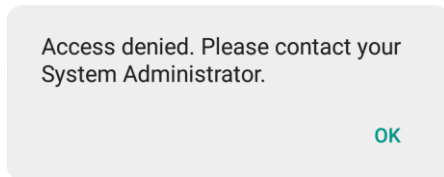
17. Press **Save & Publish** to complete the configuration and push the changes to your users.

3.4 What should end users know?

1. The icon of the Android for Work version of MobiSystems® OfficeSuite is marked with a briefcase badge:



2. When the user taps on a restricted feature he will be notified with the following dialog:



3. License activation:

The first time the user launches MobiSystems® OfficeSuite after the installation on their device, internet access will be required so that the license key is validated online. If a connection cannot be established, the application will act as pure Free/Premium version until it manages to validate.

4 Apple iOS

4.1 Prerequisites

- AirWatch Console account
- Apple VPP account

4.2 System requirements

Managed devices must meet the following requirements:

- iOS 7 or later
- The device must be enrolled with an EMM provider

4.3 Setup

1. Login to your VPP account.
2. Search for '**OfficeSuite for EMM (AirWatch)**'.
3. Purchase the desired amount of licenses.
4. You need to link your VPP account to AirWatch using sToken. For more information please refer to the *Mobile Application Management Guide v8_2.pdf* (or a newer version) by AirWatch. If these accounts are already linked please skip this step.
5. Login to the AirWatch Console.
6. Navigate to **Apps & Books > Applications**.
7. Select the '**Purchased**' tab.
8. Press '**Sync Assets**' button to make sure that your VPP purchase is synced with AirWatch.



9. Find the **OfficeSuite for EMM (AirWatch) app** and press the '**Edit Assignment**' button.
10. Define the desired distribution of the licenses in the '**Assignment**' section. For more information please refer to the *Mobile Application Management Guide v8_2.pdf* (or a newer version) by AirWatch.
11. Navigate to the '**Deployment**' section.
12. Check the '**Send Application Configuration**' checkbox which will expand a new section.

DEPLOYMENT

Assignment Type: 1 Auto

Remove On Unenroll: 2 ☒

Prevent Application Backup: ☐

Make App MDM Managed If User Installed: ☐ ⓘ iOS 9+

Use VPN: ☐

Send Application Configuration: ☒

Application Configuration

Configuration Key	Value Type	Configuration Value
<input type="text"/>	String	<input type="text"/> ✕

[+ Insert Lookup Value](#)

[+ Add](#)

13. Using the 'Add' button, add the needed number of rows.

14. Fill in the desired restrictions

APPLICATION CONFIGURATION

Configuration Key	Value Type	Configuration Value
<input type="text" value="allowPrint"/>	Boolean	<input type="text" value="true"/> ✕
<input type="text" value="allowEmail"/>	Boolean	<input type="text" value="true"/> ✕
<input type="text" value="allowAppPasscode"/>	Boolean	<input type="text" value="true"/> ✕
<input type="text" value="allowExportToPDF"/>	Boolean	<input type="text" value="true"/> ✕
<input type="text" value="allowExportFromPDF"/>	Boolean	<input type="text" value="true"/> ✕
<input type="text" value="allowClouds"/>	Boolean	<input type="text" value="true"/> ✕
<input type="text" value="allowCopyToAnotherApp"/>	Boolean	<input type="text" value="true"/> ✕

[+ Insert Lookup Value](#)

Configuration Key	Value Type	Configuration Value
allowPrint	Boolean	True / False
allowEmail	Boolean	True / False
allowAppPasscode	Boolean	True / False
allowExportToPDF	Boolean	True / False
allowExportFromPDF	Boolean	True / False
allowClouds	Boolean	True / False
allowCopyToAnotherApp	Boolean	True / False

By default, the features are restricted (set to **False**). To enable a feature, add the relevant Configuration Key and set the Configuration value to **True**.

15. Press 'Save' to complete the configuration and push the changes to your users.

4.4 What should end users know?

1. If the user is enrolled with an Apple ID, they must accept the invitation to join and register with Apple VPP. This step ensures they have accepted the terms of agreement for participating in the program. This step is not necessary for device-based use.
2. The **OfficeSuite for EMM (AirWatch)** icon is marked by a lock badge:



3. When a feature is restricted it disappears from the user interface.