



**Using Stata in  
Princeton Virtual Desktops (PVD)**

(v1.0)

*Oscar Torres-Reyna*

*otorres@princeton.edu*



September 2021

 <http://dss.princeton.edu/training/>

# Setting OneDrive

Before using Princeton Virtual Desktops (PVD) you need to setup your Princeton OneDrive (if not already).

OneDrive is a cloud storage from Microsoft where you can access your files from any device.

OneDrive will be the main link between your computer and the virtual desktop where Stata is running.

OneDrive works like any other folder in your computer. When you logon into the Princeton University network or via VPN and open file explorer (Windows) or finder (Mac), you should see the OneDrive icon



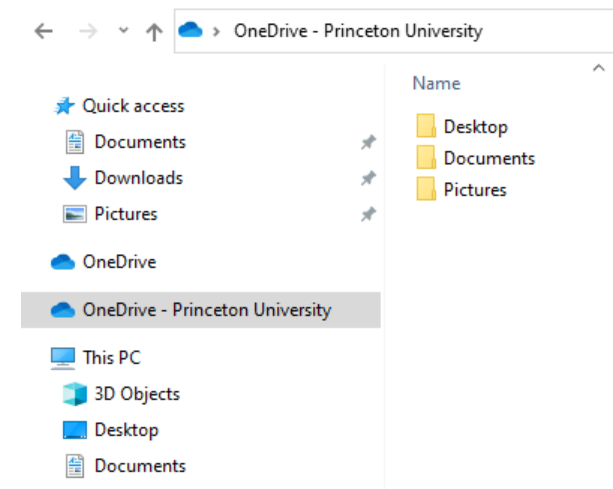
# Setting OneDrive

Double-click on the icon



A window will pop-up, follow the prompts to setup OneDrive. At the end, you should see a folder called “OneDrive – Princeton University”

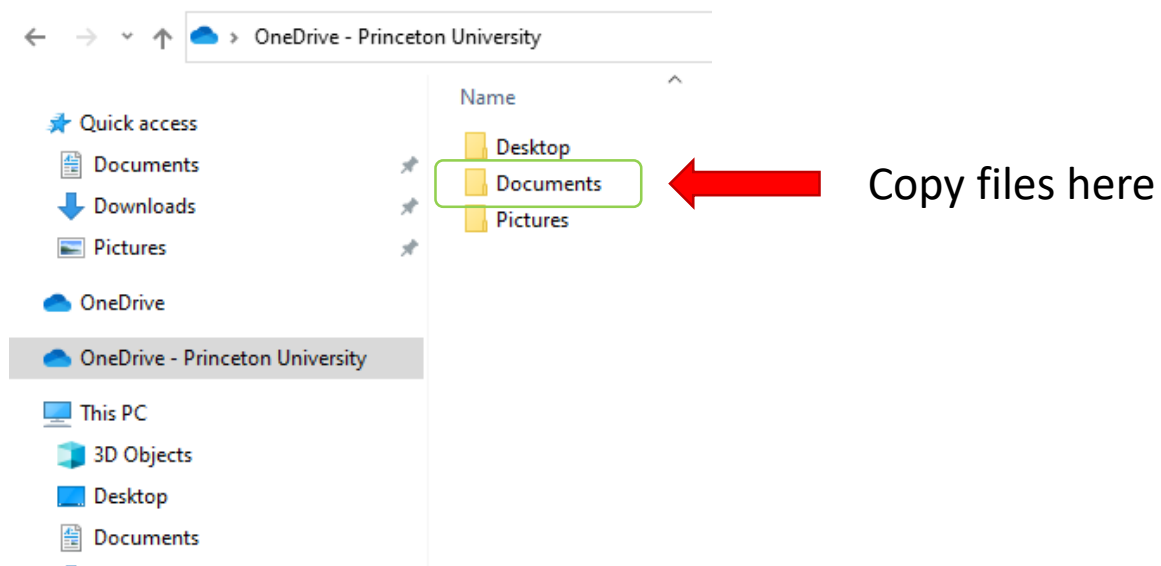
In Windows it will look like →



If you have problems with the setup, contact OIT at [helpdesk@princeton.edu](mailto:helpdesk@princeton.edu)

# Setting OneDrive

Once OneDrive is ready, you can copy files to the 'Documents' folder to use in Stata (in the virtual machine).



# Accessing Stata

Go to this link and follow the prompts to login (if any):

<http://www.princeton.edu/pvd>

Once you are in, you should see the following:

✓ Princeton Virtual Desktops



StataSE 17



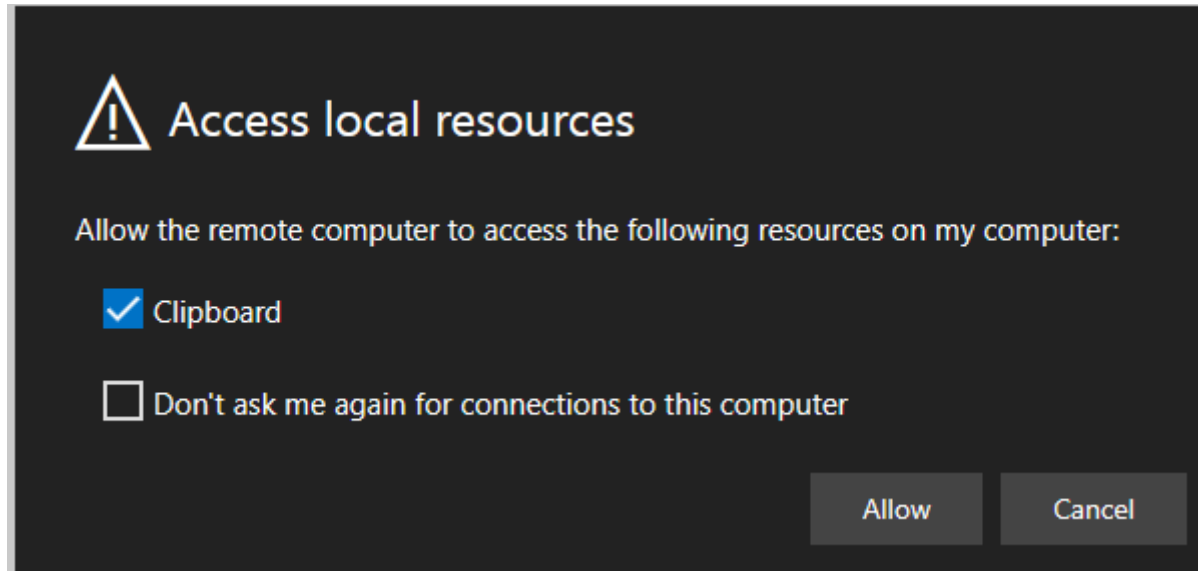
Student Labs



Click here to run Stata

# Accessing Stata

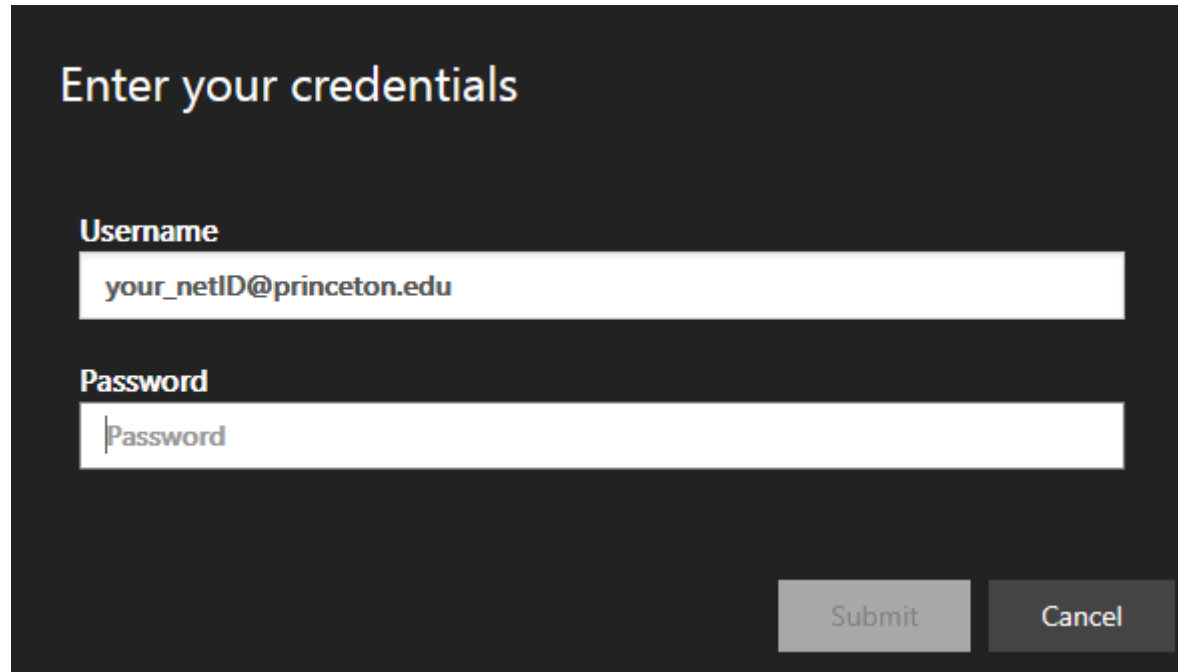
After selecting Stata, two windows will pop-up in sequence, the first one:



Click 'Allow'

# Accessing Stata

The second one to login, replace “your\_netID” with your actual netID:



Enter your credentials

Username  
your\_netID@princeton.edu

Password  
Password

Submit Cancel



Click 'Submit'

# Accessing Stata

Once you login it will take you to the virtual machine running Windows.

For Mac users this may sound strange but yes, you are in Windows environment.

The Stata window will show up, it may take a little while depending on your connection.

Once it opens, it should look like the screenshot in the next page...





File Explorer | Quick access | Search Quick access

Stata/SE 17.0

File Edit Data Graphics Statistics User Window Help

History

Filter commands here

# Command

There are no items to show.

Statistics and Data Science

17.0  
SE-Standard Edition

Copyright 1985-2021 StataCorp LLC  
StataCorp  
4905 Lakeway Drive  
College Station, Texas 77845 USA  
800-STATA-PC <https://www.stata.com>  
979-696-4600 [stata@stata.com](mailto:stata@stata.com)

Stata license: 55-student lab perpetual  
Serial number:  
Licensed to: Princeton Virtual Desktops  
Princeton University

Notes:

1. Unicode is supported; see help `unicode_advice`.
2. Maximum number of variables is set to 5,000; see help `set_maxvar`.

Running C:\Program Files\Stata17\profile.do ...

Command

Variables

Filter variables here

Name Label

There are no items to show.

Properties

Variables

Name	Label
Label	
Type	
Format	
Value label	
Notes	

Data

Frame	default
Filename	
Label	
Notes	
Variables	0
Observations	0
Size	0
Memory	64M
Sorted by	

C:\Users\netID\OneDrive - Princeton University\Documents

Access other available software here

Click here to see the folders

Working directory mapping to OneDrive. This is where all you files should be saved. You can access them in the virtual machine and in your laptop.

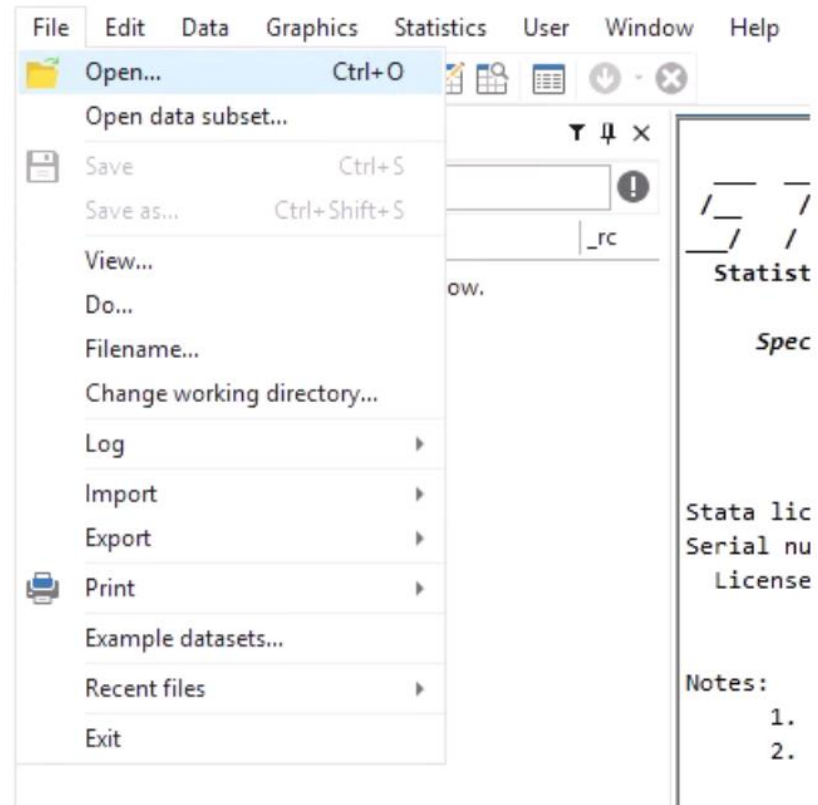
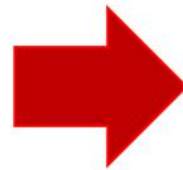
# To open Stata files (try not to double-click)...

Go to File → Open

Look for the Stata file.

- Stata data files have extension \*.dta.
- Stata do-files have extension \*.do
- Stata dictionary files have extension \*.dct

Copy the code to your do-file for future reference



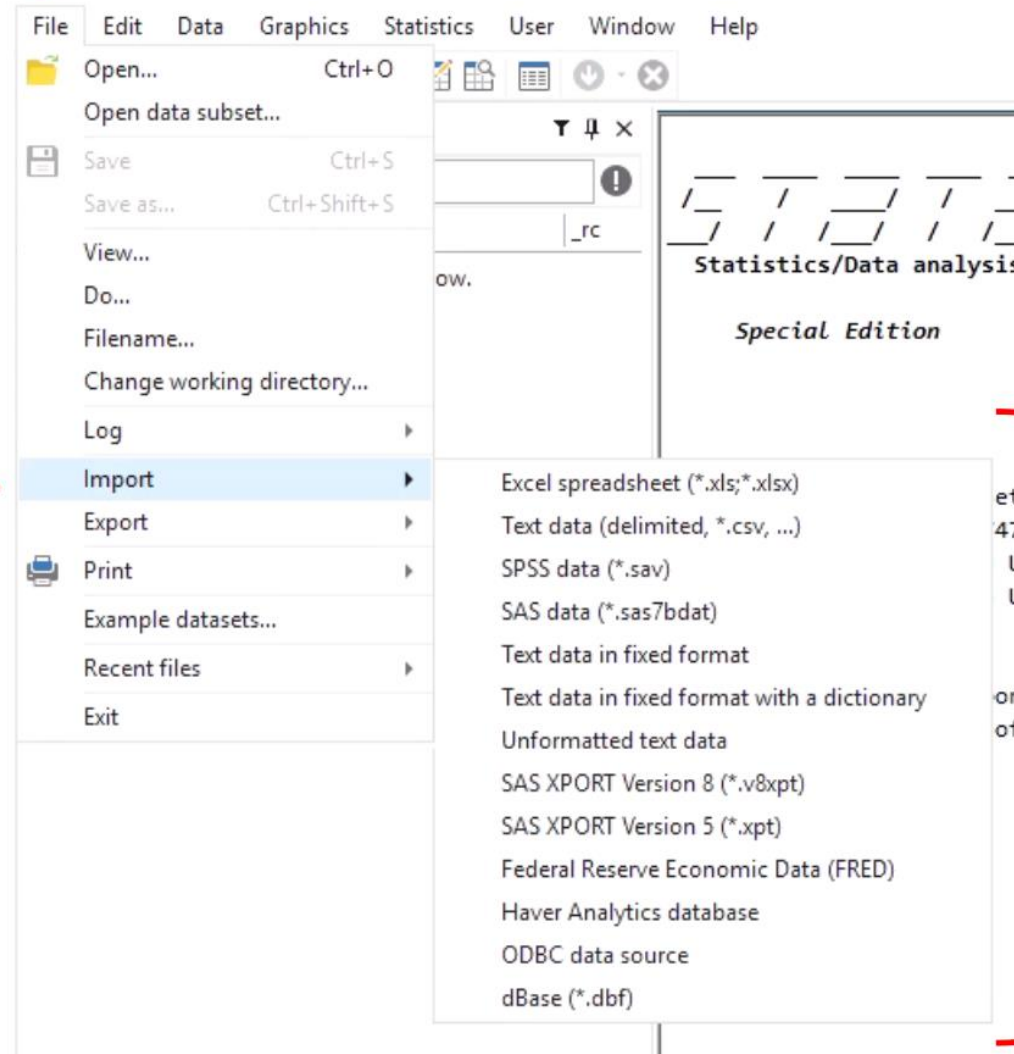
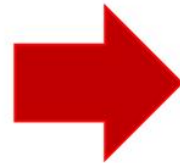
# Importing files to Stata...

Go to File → Import

Select the type of file and follow the prompts.

- If importing an Excel file, make sure to check “Import first row as variable names”
- Before clicking OK, check the “Preview” window to make sure the data is being read correctly.

Copy the code to your do-file for future reference



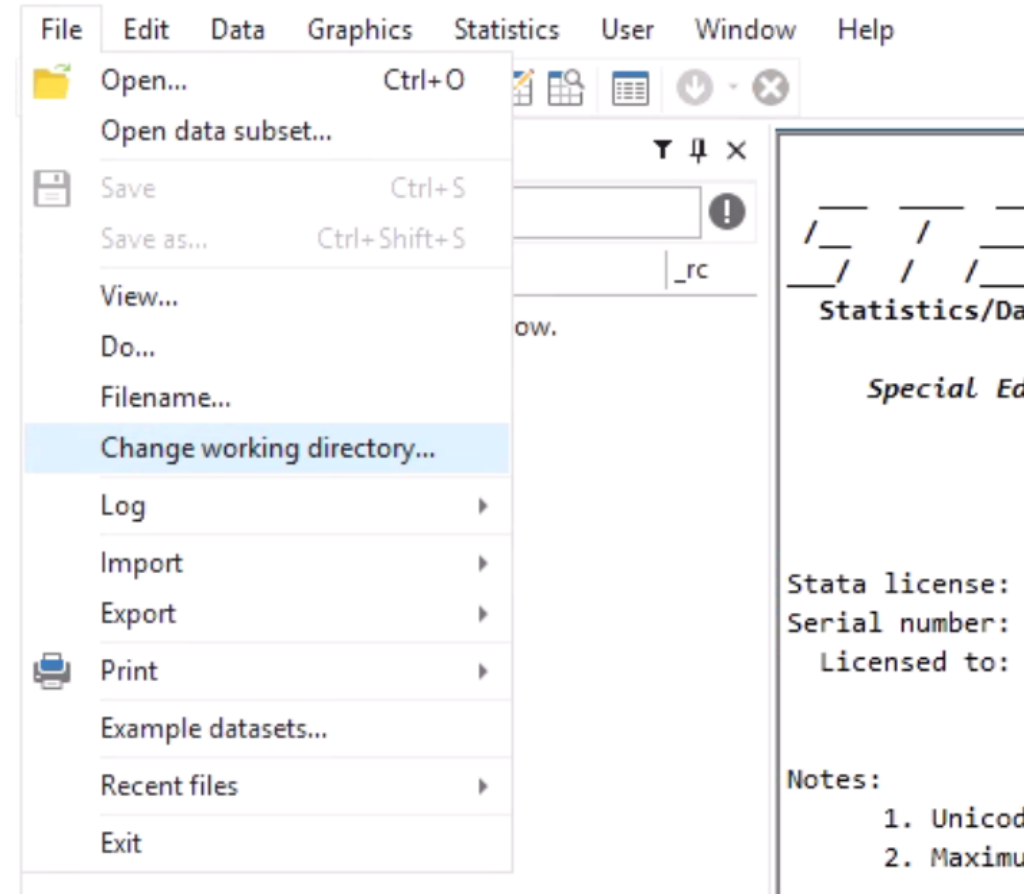
Select the data format you are trying to import

# If you need to change the working directory...

Go to File → Change Working Directory

Select the folder where your files are stored. This will ensure that anything you create in Stata will be saved in that folder.

Copy the code to your do-file for future reference



# Warnings when using PVD...

1. If you close the browser, the session will end and you will lose any unsaved work. Make sure to save your work frequently.
2. After 60 minutes of inactivity your PVD session will end. Again, save your work frequently.
3. You can only open one virtual session at a time. If you try to open a second one, the first one will close. Save your work frequently.
4. You cannot print from the PVD to the local printer. You need to access the file from your laptop and print it from there. From the PVD you can print files to PDF, save in OneDrive, open them in your laptop, and print them.
5. If you save files on the desktop or the documents folder in the virtual machine, those files will be deleted 30 days after the final exams for the current semester. Make sure to save your files to the Princeton OneDrive, and have backups in your laptop, Google drive, and a portable drive.

Source: [https://princeton.service-now.com/service?id=kb\\_article&sys\\_id=KB0012822#section5](https://princeton.service-now.com/service?id=kb_article&sys_id=KB0012822#section5)

# Need more computer power?

If you are working with big files and Stata in PVD is running too slow or not running at all, you have some options:

- The Data and Statistics Services (DSS) lab have Windows PCs that can handle big datasets. The DSS lab also has a mini-super computer which can run really big datasets. These machines can be accessed in-person or remote. For information on current access policies contact DSS at [data@princeton.edu](mailto:data@princeton.edu).
- Princeton Research Computing has high-performing computer clusters that can handle really big datasets. See here for instructions on how to access Stata in Adroit: <https://dss.princeton.edu/training/MyAdroitStata.pdf>. For more information contact Research Computing at [cses@princeton.edu](mailto:cses@princeton.edu).

# Additional information...

You can also access the Princeton Virtual Desktops by remote connection. For instructions and/or to learn what other software is available see here:

<http://www.princeton.edu/learnpvd>

For questions regarding access to Princeton Virtual Desktops contact OIT at [helpdesk@princeton.edu](mailto:helpdesk@princeton.edu).