



V1504

VERTICAL PLATFORM LIFT

PLANNING GUIDE

Applicable Codes:

ASME A17.1

ASME A18.1

CAN/CSA B355

CAN/CSA B613

Copyright © 2015
Savaria Corporation
All rights reserved.

Printed in Canada

Purpose of This Guide

This guide assists architects, contractors, and lift professionals to incorporate the V1504 Vertical Platform Lift into a residential or public building design. The design and manufacture of the V1504 Vertical Platform Lift meets the requirements of the following codes and standards:

- ASME A18.1-2003 Section 2 (Public)
- ASME A18.1-2005 Section 2 (Public)
- ASME A18.1-2008 Section 2 (Public)
- ASME A18.1-2011 Section 2 (Public)
- ASME A18.1-2014 Section 2 (Public)
- ASME A18.1-2003 Section 5 (Private)
- ASME A18.1-2005 Section 5 (Private)
- ASME A18.1-2008 Section 5 (Private)
- ASME A18.1-2011 Section 5 (Private)
- ASME A18.1-2014 Section 5 (Private)
- ASME A17.1-1996 Section 20 (Public)
- ASME A17.1-1996 Section 21 (Private)
- CAN/CSA B355 S1-02 (Public)
- CAN/CSA-B355-09 (Public)
- CAN/CSA B613-2000 (Private)

We recommend that you contact your local authority having jurisdiction to ensure that you adhere to all local rules and regulations pertaining to vertical platform lifts.

IMPORTANT: This Planning Guide provides nominal dimensions and specifications useful for the initial planning of a vertical platform lift project. Dimensions and specifications are subject to change without notice due to continually evolving code and product applications. Before beginning actual construction, please consult Savaria Corporation or the authorized Savaria dealer in your area to ensure you receive your site-specific installation drawings with the dimensions and specifications for your project.

Visit our website for the most recent V1504 drawings and dimensions.

How to Use This Guide

- 1 Determine your client's intended use of the lift.
- 2 Determine the local code requirements.
- 3 Determine the site installation parameters.
- 4 Determine the cab type and hoistway size requirements.
- 5 Plan for electrical requirements.

History

April 6, 2010 - Initial release

May 16, 2011 - Updated "Travel speed" in Specifications table to 20 ft/min (0.1 m/s)

June 17, 2011 - Added 24V battery backup to Options to Specifications table on page 5

July 8, 2013 - Added Noise Level to Specifications table on page 4

July 29, 2013 - Added optional 80" cab wall height to Specifications table on page 4

October 7, 2013 - Added seat capacity to Specifications table on page 4

November 12, 2013 - Revised drawings on pages 12 through 26 to include 42"-wide platforms

December 5, 2013 - Revised enclosure drawings on pages 20 through 24

February 12, 2014 - Added seat dimensions on page 27

March 18, 2014 - Revised motor/drive information in Specifications table on page 5

April 7, 2014 - Revised drawings on pages 20-24

April 29, 2014

May 29, 2014 - Added NOTE to page 27 specifying max seat capacity; Changed motor/drive specification on page 4 from 1 HP to 3 HP

June 9, 2014 - Added Remote Controller/Pump Box dimensions on page 28

June 25, 2014 - Added door and gate drawings - pages 25 to 36

July 28, 2014 - Added DuraSwing operator drawings - pages 37 to 40

September 11, 2014 - Removed section "Additional Branch Circuit" from page 43

November 5, 2014 - Revised Applicable Codes on page 3

January 20, 2015 - Added new 2014 code in section above

February 17, 2015 - Revised drawings on pages 13 to 19

September 24, 2015 - Added Daily Cycle to specifications table on page 4

Specifications

V1504 Specifications

| Specification | Specification Data |
|--|--|
| Load capacity | 750 lb (340 kg) |
| Seat capacity | 330 lb (150 kg) |
| Maximum travel | 23 ft (7 m) |
| Travel speed | 20 ft/min (0.1 m/s) |
| Noise level (for typical installation) | 72.9 dBA (up direction); 50.0 dBA (down direction) Measured at a height of 1m, distance of 1m, in front of the motor with all panels on |
| Daily cycle | Normal: 30 Heavy: 75 Excessive: 100 Maximum starts in 1 hour on standard installation: 12 NOTE: Please consult your Sales Representative if there a chance you may exceed these amounts. |
| Levels serviced | 2 (standard), 3, 4 |
| Cab sizes | 36" x 48" (914 mm x 1219 mm) 36" x 54" (914 mm x 1371 mm) 36" x 60" (914 mm x 1524 mm) 42" x 48" (1067 mm x 1219 mm) 42" x 54" (1067 mm x 1371 mm) 42" x 60" (1067 mm x 1524 mm) |
| Cab walls (height) | Standard 42-1/8" (1070 mm) Optional 80" (2031 mm) |
| Cab access | Enter/exit same side (platform Type 1L and 1R) Front/rear access (platform Type 2) 90 degree access (platform Type 3 and 4) |
| Power supply | 120 VAC, 20 A, 60 Hz, single phase |
| Motor/drive | 2:1 chain hydraulic, 3 HP, gear-type motor for 110V |
| Control system | Electronic-free relay logic controller |
| Tower | Modular 8 ft (2.4 m) base guide rail assembly Roller guide support |
| Pit depth requirement | 3" (76.2 mm) |
| Finish | Beige electrostatic powder coat paint on all steel surfaces and vacuumed formed plastics |
| Standard features | 115 VAC operation (115 VAC up direction; 12 VDC battery down direction) Call/send stations at landings Continuous-pressure type buttons Operating control buttons on platform Automatic battery recharging system (115 VAC) Remote manual lowering device Low-voltage controls Limit switches Handrail Non-skid platform surface No machine room required Emergency stop button |

V1504 Specifications

| Specification | Specification Data |
|----------------------|---|
| Safety features | Platform gate Safety underpan Door locks Safety brake Emergency stop buttons Manual lowering and battery lowering system |
| Options | Platform gate with metal insert and electric strike Top landing gate Upper/lower landing door 80" (2032 mm) Fire-rated, flush-mounted landing entrances Folding seat on platform Telephone on platform Custom color Fixed access ramp Public building package Outdoor package Automatic safety ramp on platform (for outdoor model) 24V battery backup Remote controller/pump box |

Site Construction Details

The V1504 needs a wall that supports a minimum of 472 lb (2100 N) of pull out force at any bracket. The floor must be capable of supporting a load of 3200 lb (14.2 kN). See Figure 1. A wall with a combination of two columns of three 2x4's, or a concrete or brick wall is required.

Figure 2 details a sample wooden support wall configuration

Figure 1: Wall/Floor Loading

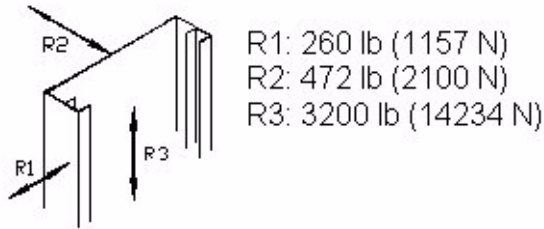


Figure 2: Sample Wooden Support Wall Configuration

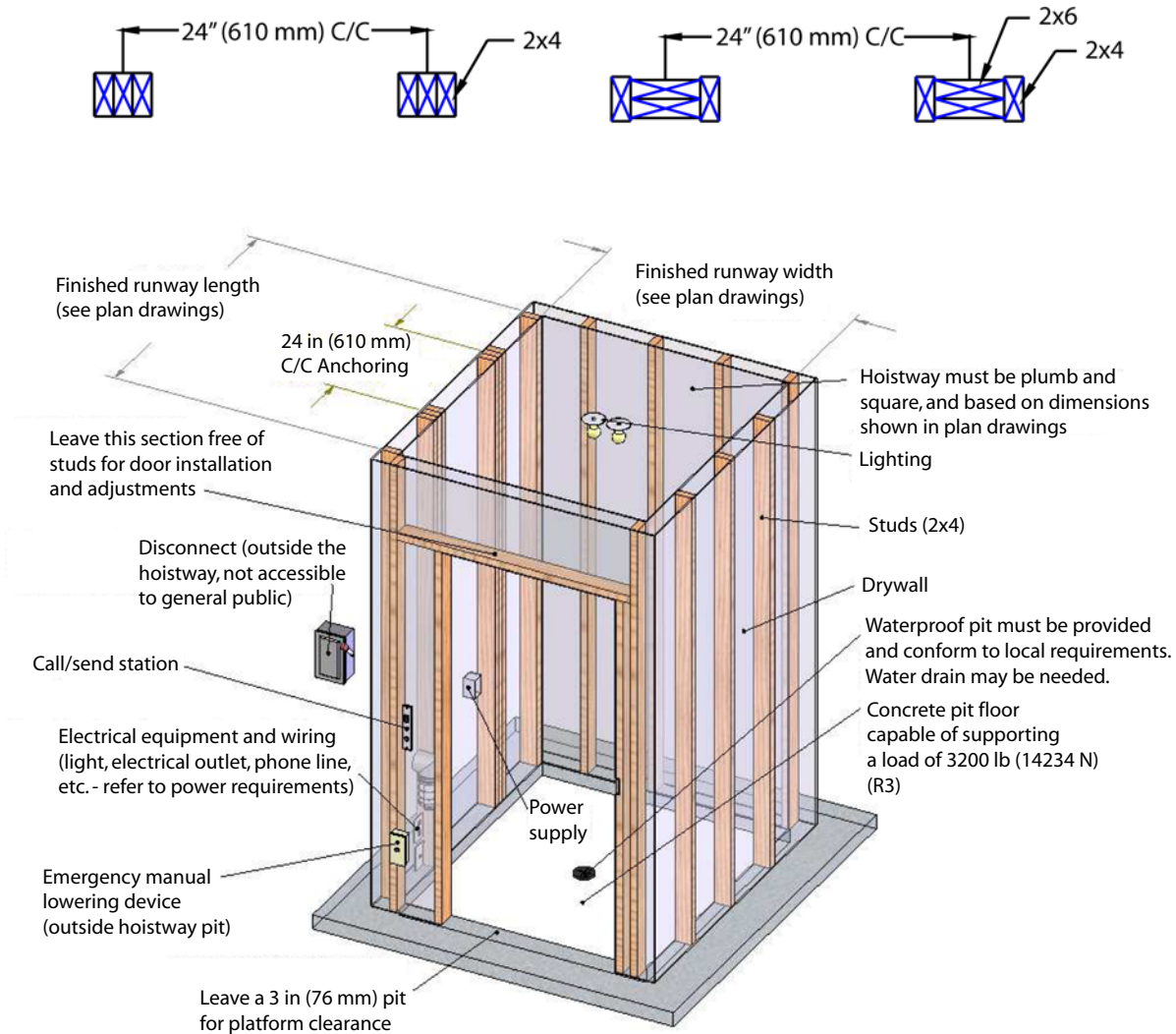


Figure 3 illustrates the recommended steps for constructing a wooden hoistway.

Figure 3: Wooden Hoistway Construction - Recommended Steps

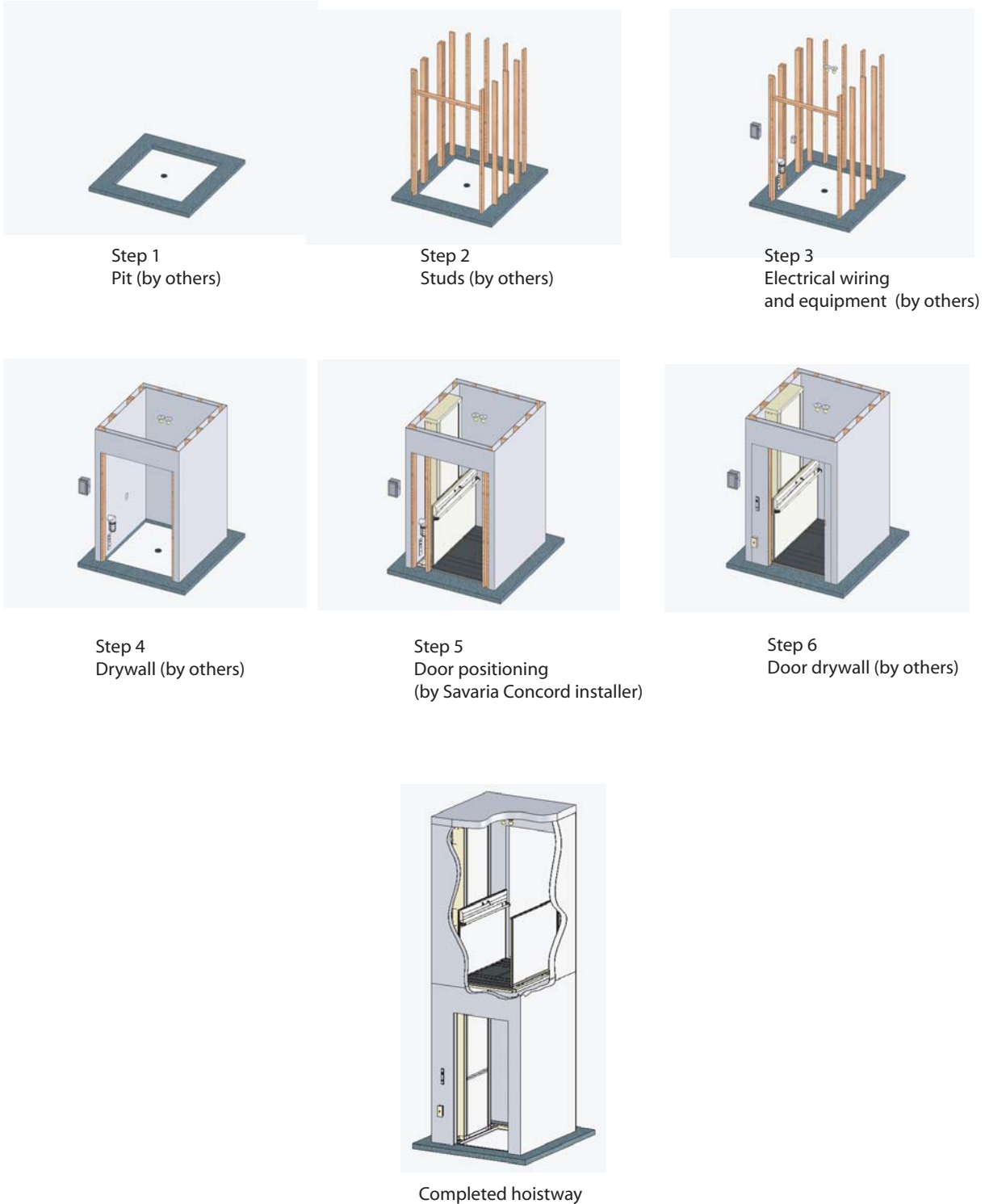


Figure 4 illustrates a sample concrete/steel structure configuration.

Figure 4: Sample Concrete/Steel Structure Configuration

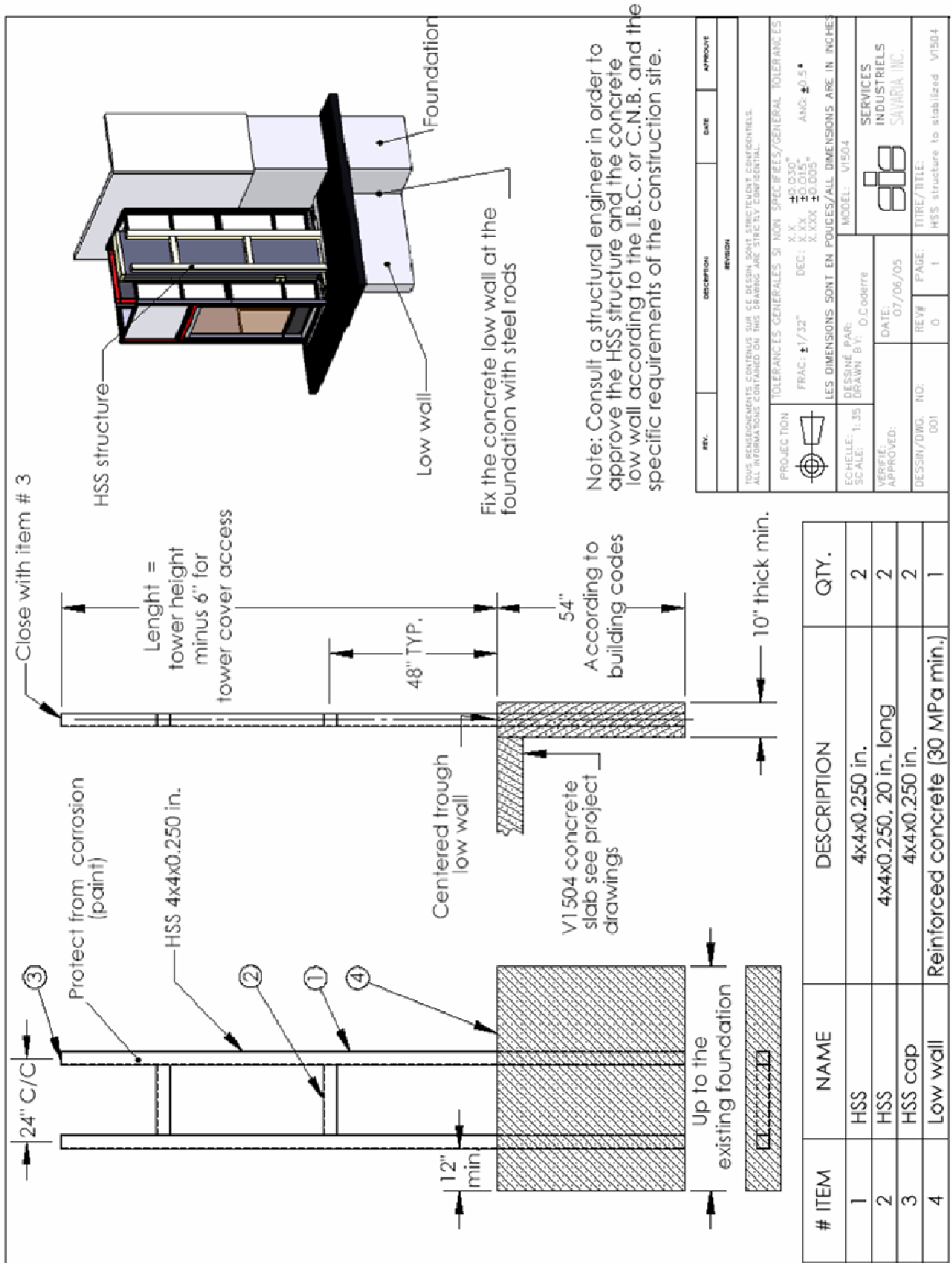


Figure 5 illustrates a sample outdoor enclosure application.

Figure 5: Sample Outdoor Enclosure Application

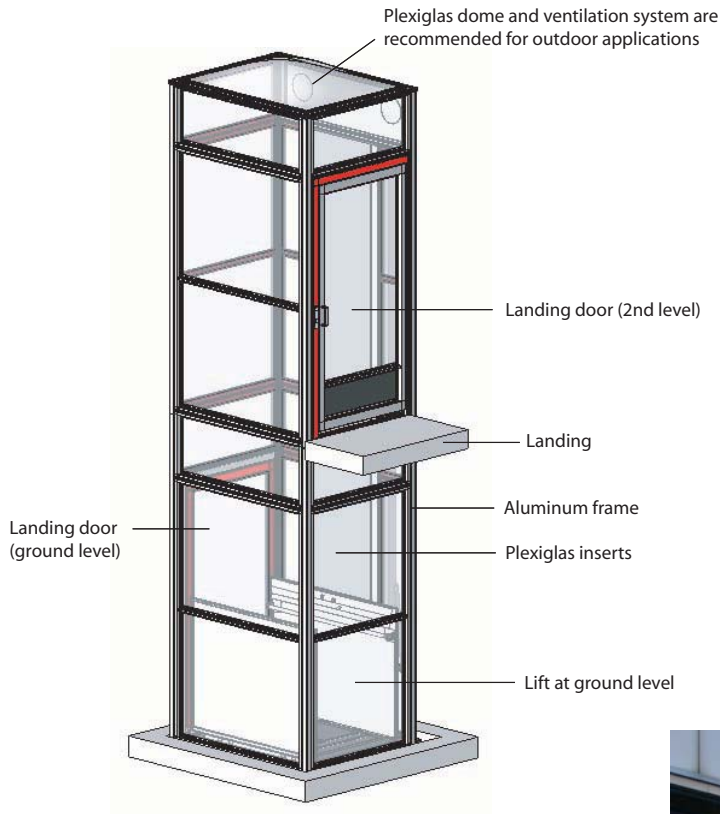


Figure 6 illustrates the site construction details for a typical outdoor application.

Figure 6: Sample Unenclosed Outdoor Application

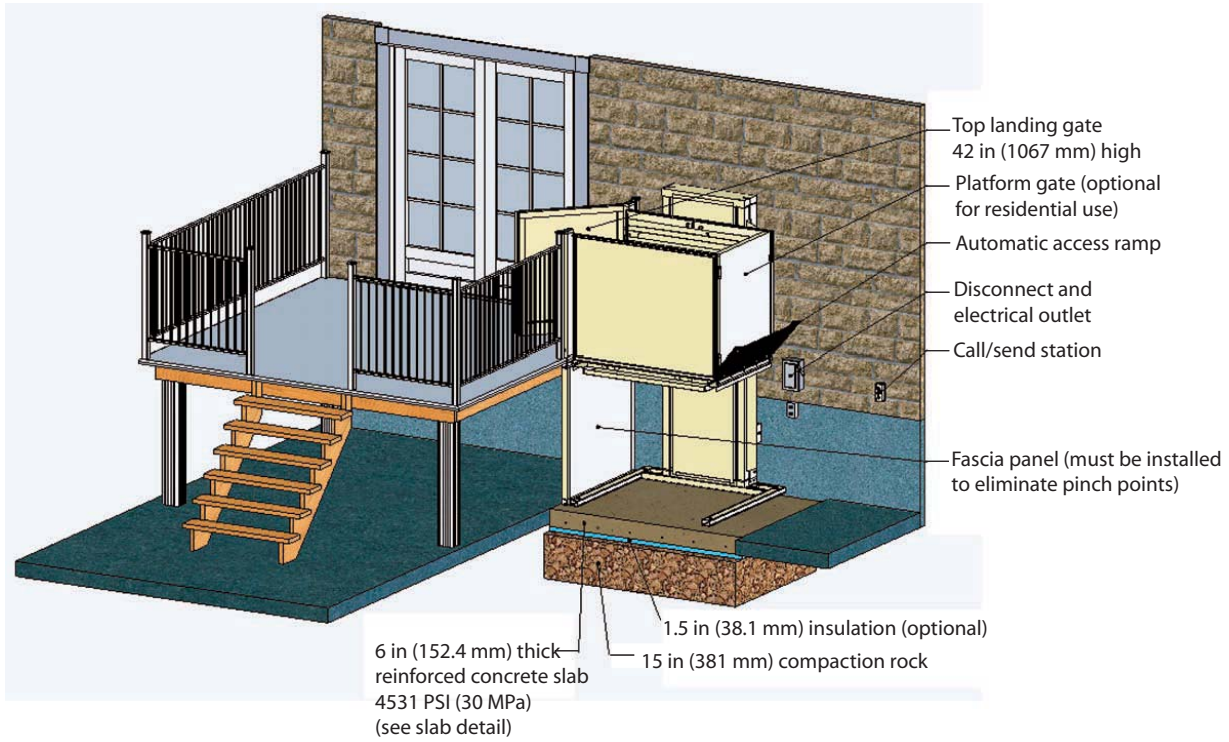
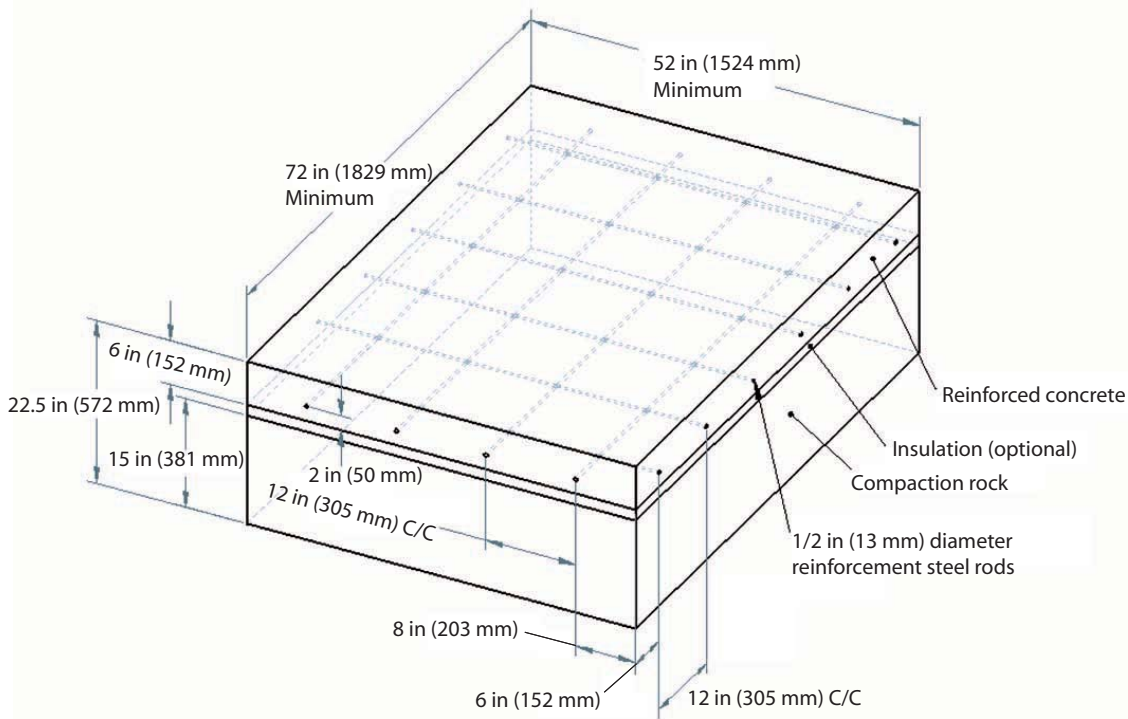


Figure 7 illustrates the concrete slab detail for a typical outdoor application.

Figure 7: Concrete Slab Detail

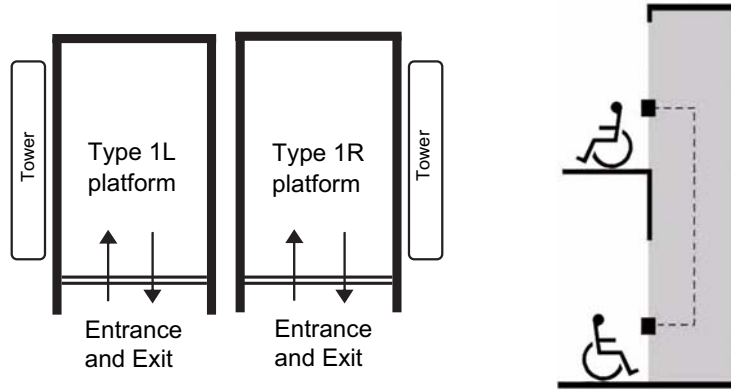


Cab Types

Type 1 Cabs

For type 1 cabs, entry and exit are available from only one end of the platform.

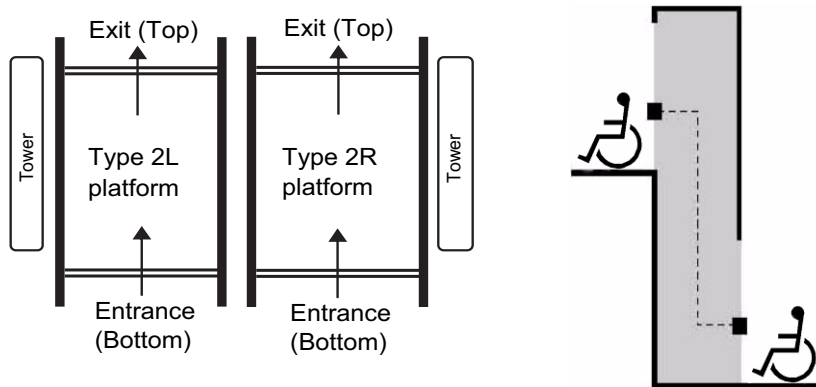
Figure 8: Type 1 Left and Right



Type 2 Cabs

For type 2 cabs, entry and exit are available from both ends of the platform.

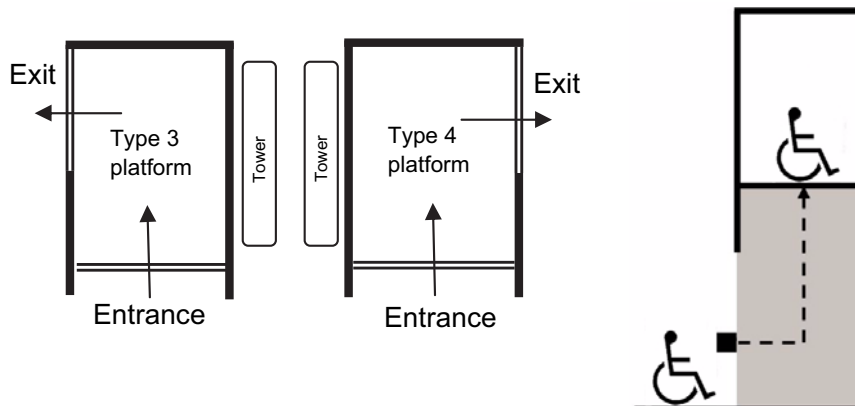
Figure 9: Type 2



Type 3 and 4 Cabs

For type 3 and 4 cabs, entry and exit are available from one end and one side of the platform.

Figure 10: Type 3 and 4



Drawings

- Elevation and plan view, hoistway application (Type 1L)
- Elevation and plan view, hoistway application (Type 1R)
- Elevation and plan view, hoistway application (Type 2)
- Elevation and plan view, hoistway application (Type 3)
- Elevation and plan view, hoistway application (Type 3, 45" opening)
- Elevation and plan view, hoistway application (Type 4)
- Elevation and plan view, hoistway application (Type 4, 45" opening)
- Elevation and plan view, enclosure application (Type 1L)
- Elevation and plan view, enclosure application (Type 1R)
- Elevation and plan view, enclosure application (Type 2)
- Elevation and plan view, enclosure application (Type 3, 45" opening)
- Elevation and plan view, enclosure application (Type 4, 45" opening)
- Auto door, left-hand
- Auto door, right-hand
- Manual door, left-hand
- Manual door, right-hand
- Prodoor auto, left-hand
- Prodoor auto, right-hand
- Prodoor manual, left-hand
- Prodoor manual, right-hand
- Auto half gate, left-hand
- Auto half gate, right-hand
- Manual half gate, left-hand
- Manual half gate, right-hand
- DuraSwing on half gate, right-hand
- DuraSwing on half gate, right-hand, 45" opening
- DuraSwing on half gate, left-hand
- DuraSwing on half gate, left-hand, 45" opening
- Seat dimensions
- Remote controller/pump box dimensions

Note: Refer to the Architects & Builders portion of our main website (www.savaria.com) for other door/gate sizes.

Figure 11: Elevation and plan view, hoistway application (Type 1L)

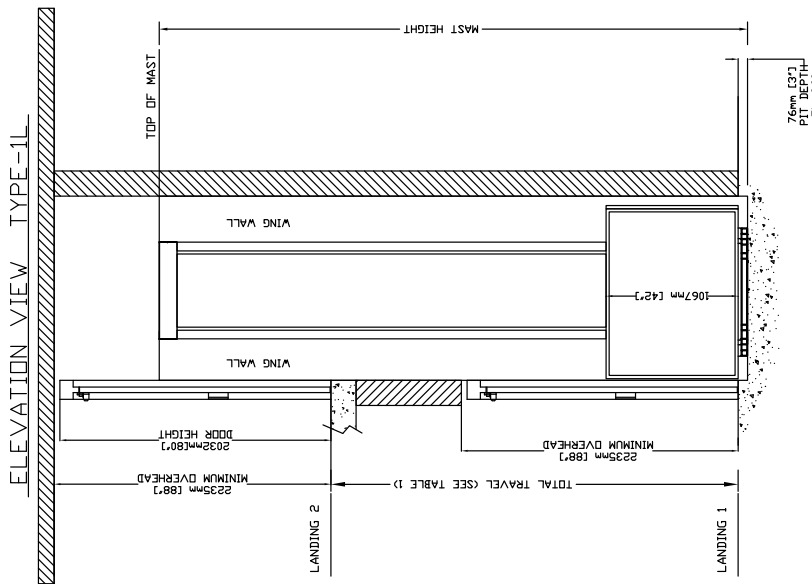


TABLE 1- MAST HEIGHT *

| Max. Travel mm (Inches) | Extension Height | | Mast Height with 4.188" CAP | |
|----------------------------|------------------|-------------|--------------------------------|-----------|
| | mm (Inches) | mm (Inches) | mm | Inches |
| 1219 (48") | 2388 (94") | 1778 (70") | 1168 (46") | 559 (22") |
| 1524 (60") | 1 | 1 | 254 (10") | 1 |
| 1829 (72") | 1 | 1 | 307 | 130.188 |
| 2438 (96") | 1 | 1 | 3916 | 154.188 |
| 2743 (108") | 1 | 1 | 4272 | 168.188 |
| 3048 (120") | 1 | 1 | 4526 | 178.188 |
| 3658 (144") | 2 | 1 | 5136 | 202.188 |
| 4267 (168") | 2 | 1 | 6050 | 238.188 |
| 4877 (192") | 2 | 1 | 6660 | 262.188 |
| 5486 (216") | 3 | 1 | 7269 | 286.188 |
| 6096 (240") | 3 | 1 | 7828 | 308.188 |
| 6706 (264") | 3 | 1 | 8438 | 332.188 |
| 7010 (276") | 3 | 1 | 8692 | 342.188 |

*EXAMPLE TABLE WITH 3" PIT. DIMENSIONS VARY WITH TRAVEL

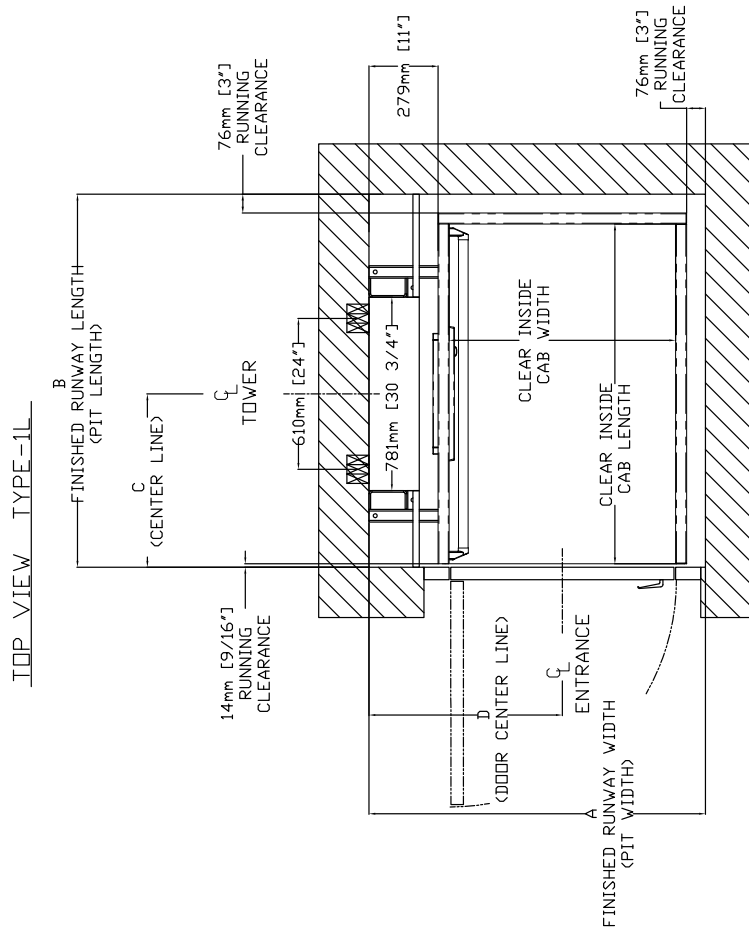


TABLE 2- HOISTWAY DIMENSION

| CLEAR INSIDE CAB WIDTH | CLEAR INSIDE CAB LENGTH | | A | | B | | C | | D | |
|---------------------------|----------------------------|--------|------|--------|------|---------|------|---------|-----|--------|
| | mm | Inches | mm | Inches | mm | Inches | mm | Inches | mm | Inches |
| 38 | 1219 | 48 | 1389 | 53 1/2 | 1354 | 53 9/16 | 924 | 36 3/8 | 781 | 30 3/4 |
| 54 | 1372 | 54 | 1389 | 53 1/2 | 1607 | 63 1/8 | 776 | 30 3/4 | 781 | 30 3/4 |
| 60 | 1524 | 60 | 1511 | 59 1/2 | 1354 | 53 9/16 | 624 | 24 9/16 | 657 | 25 7/8 |
| 1067 | 42 | 1372 | 1511 | 59 1/2 | 1067 | 42 | 1307 | 51 3/8 | 700 | 27 5/8 |
| 1067 | 42 | 1524 | 1511 | 59 1/2 | 1059 | 41 5/8 | 776 | 30 9/16 | 657 | 25 7/8 |

Figure 13: Elevation and plan view, hoistway application (Type 2)

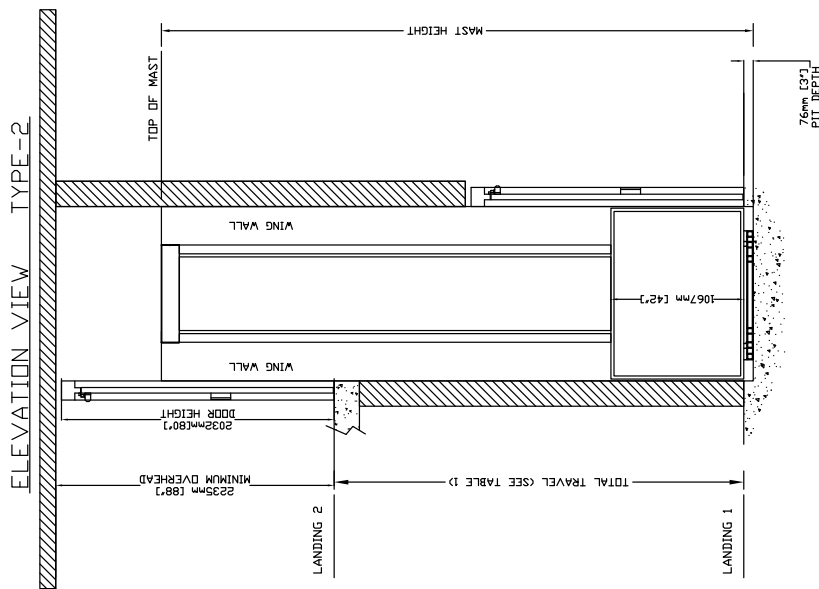


TABLE 1- MAST HEIGHT*

| Max. Travel mm (inches) | Extension Height | | Mast Height with 4.188" CAP mm (inches) |
|----------------------------|------------------|-------------|---|
| | mm (inches) | mm (inches) | |
| 1219 (48") | 2388 (94") | 1778 (70") | 2748 (108.188) |
| 1524 (60") | | 1 | 3053 (120.188) |
| 1829 (72") | | 1 | 3307 (130.188) |
| 2438 (96") | | 1 | 3916 (154.188) |
| 2743 (108") | | 1 | 4272 (168.188) |
| 3048 (120") | | 1 | 4526 (178.188) |
| 3658 (144") | | 2 | 5136 (202.188) |
| 4267 (168") | | 2 | 6050 (238.188) |
| 4877 (192") | | 3 | 6660 (262.188) |
| 5486 (216") | | 3 | 7269 (286.188) |
| 6096 (240") | | 3 | 7828 (308.188) |
| 6705 (264") | | 3 | 8438 (332.188) |
| 7010 (276") | | 3 | 8692 (342.188) |

*EXAMPLE TABLE WITH 3" PIT. DIMENSIONS VARY WITH TRAVEL

TOP VIEW TYPE-2

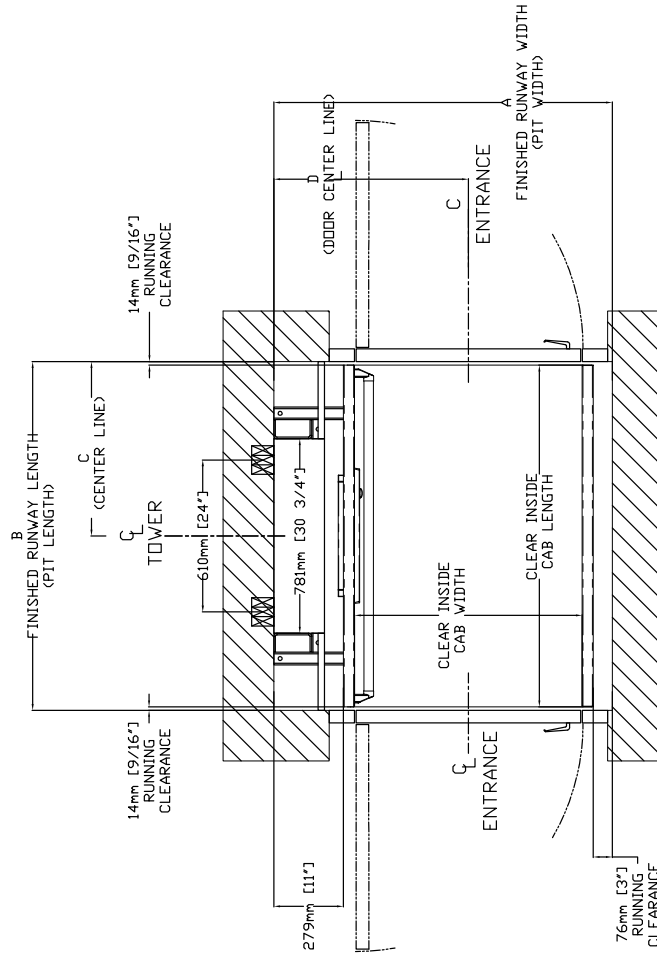


TABLE 2- HOISTWAY DIMENSION

| CLEAR INSIDE CAB WIDTH | A FINISHED RUNWAY WIDTH | | B FINISHED RUNWAY LENGTH | | C TOWER CENTER LINE | | D DOOR CENTER LINE (IN CASE OF 36" DOOR) | |
|---------------------------|----------------------------|--------|-----------------------------|--------|------------------------|---------|--|--------|
| | mm | Inches | mm | Inches | mm | Inches | mm | Inches |
| 914 | 1359 | 53 1/2 | 1248 | 49 1/8 | 624 | 24 9/16 | 781 | 30 3/4 |
| 914 | 36 | 1372 | 54 | 1400 | 55 1/8 | 27 9/16 | 781 | 30 3/4 |
| 914 | 36 | 1524 | 60 | 1553 | 61 1/8 | 30 9/16 | 781 | 30 3/4 |
| 1067 | 42 | 1219 | 48 | 1511 | 59 1/2 | 24 9/16 | 857 | 33 3/4 |
| 1067 | 42 | 1372 | 54 | 1511 | 59 1/2 | 27 9/16 | 857 | 33 3/4 |
| 1067 | 42 | 1524 | 60 | 1553 | 61 1/8 | 30 9/16 | 857 | 33 3/4 |

Figure 16: Elevation and plan view, hoistway application (Type 4)

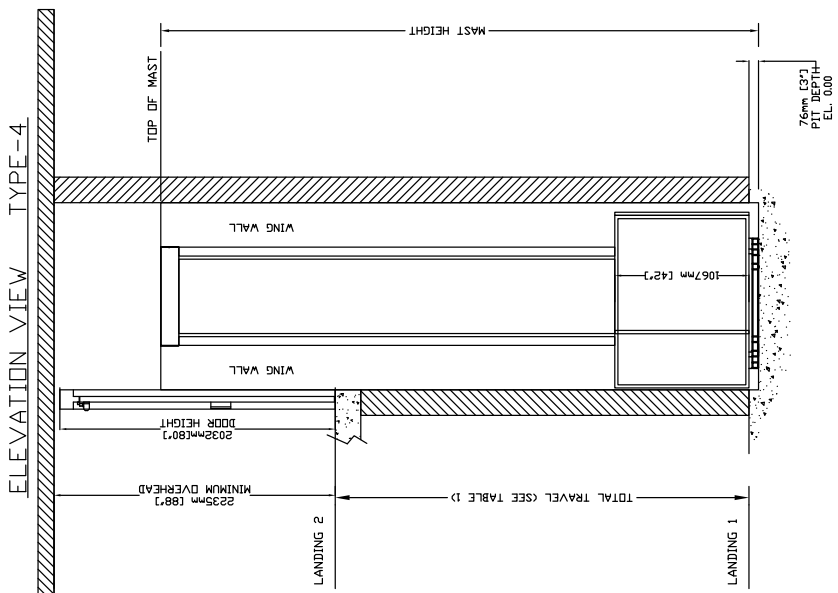


TABLE 1- MAST HEIGHT *

| Max Travel mm (inches) | Extension Height mm (inches) | | | Mast Height with 4.188" CAP | |
|---------------------------|---------------------------------|------------|------------|--------------------------------|-----------|
| | 2388 (94') | 1778 (70') | 1168 (46') | 559 (22') | 254 (10') |
| 1219 (48') | 1 | | | 1 | |
| 1524 (60') | 1 | | 1 | | |
| 1829 (72') | 1 | 1 | | | |
| 2438 (96') | 1 | 1 | 1 | | |
| 2743 (108') | 1 | 1 | | 1 | |
| 3048 (120') | 1 | 1 | | 1 | |
| 3658 (144') | 2 | | | 1 | |
| 4267 (168') | 2 | 1 | | | |
| 4877 (192') | 2 | 1 | 1 | | |
| 5486 (216') | 3 | | | 1 | |
| 6096 (240') | 3 | 1 | | | |
| 6706 (264') | 3 | | 1 | | |
| 7010 (276') | 3 | 1 | 1 | | |

*EXAMPLE TABLE WITH 3" PIT, DIMENSIONS VARY WITH TRAVEL

TOP VIEW TYPE-4

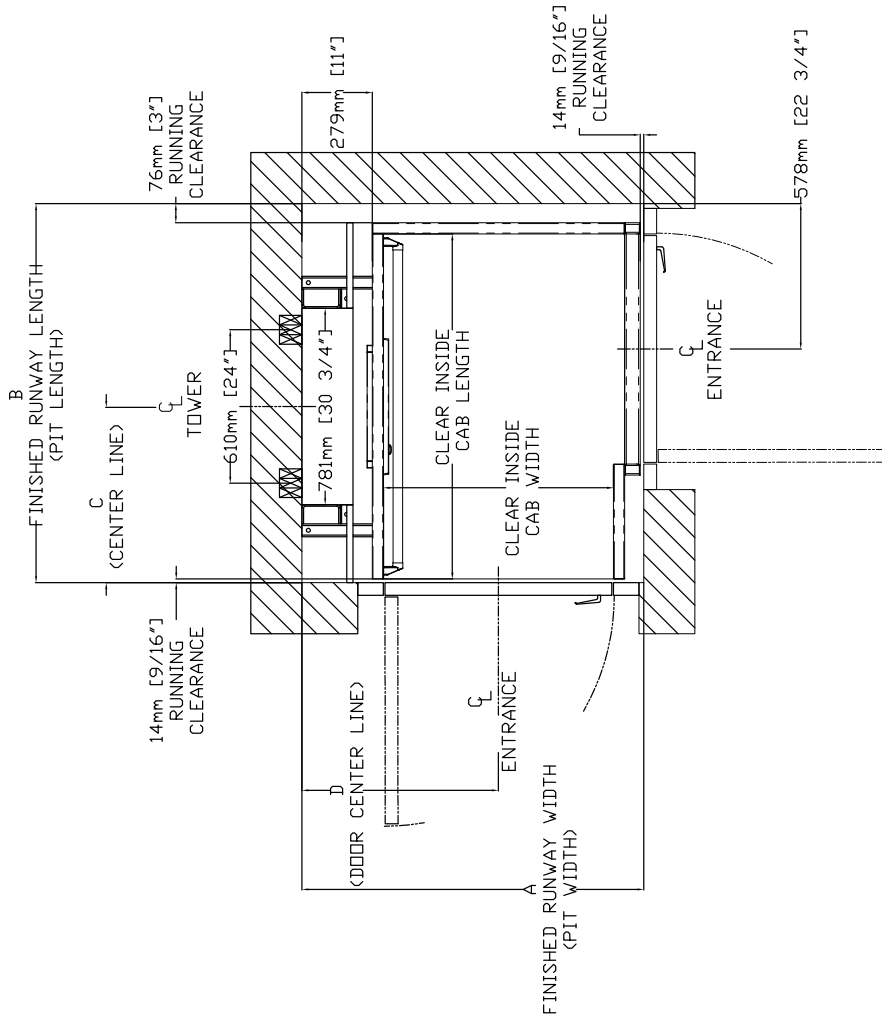
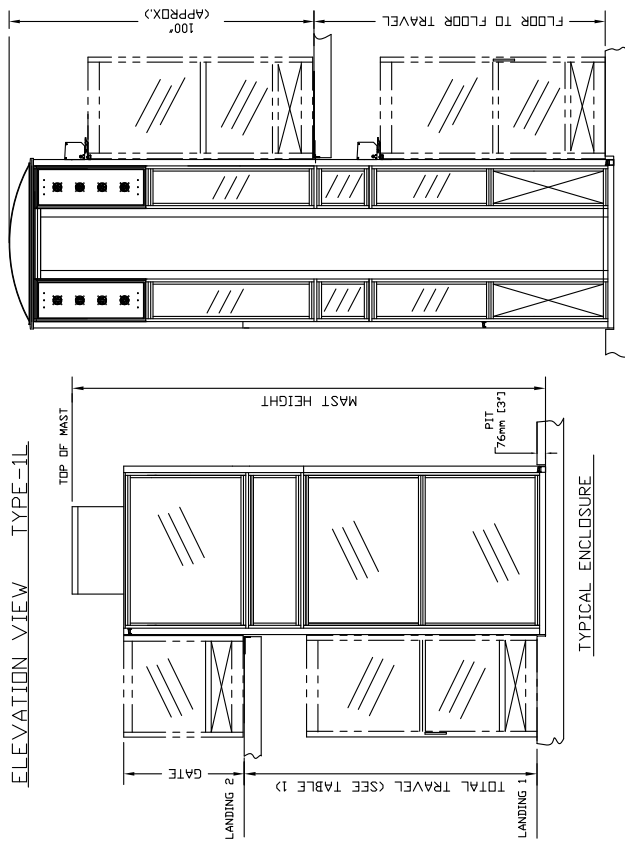
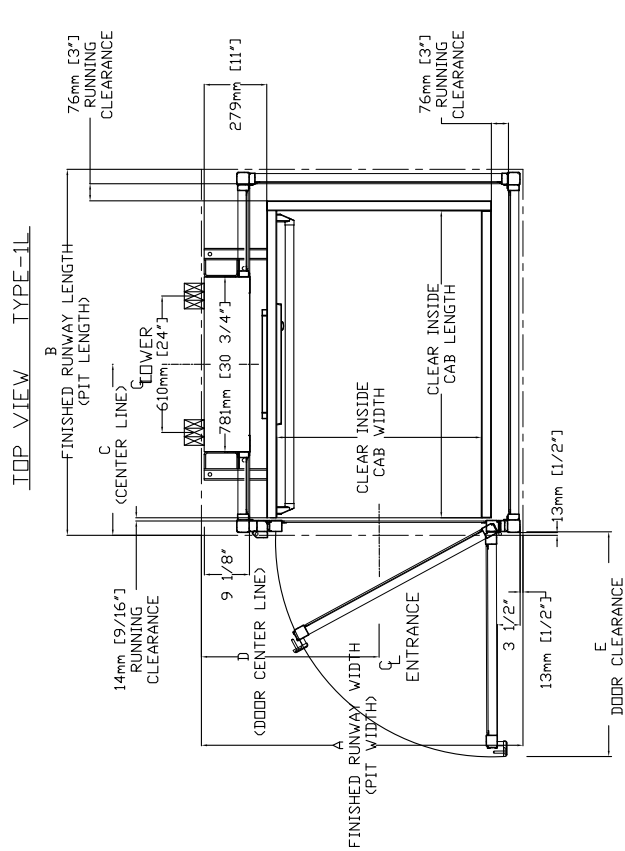


TABLE 2- HOISTWAY DIMENSION

| CLEAR INSIDE CAB WIDTH | CLEAR INSIDE CAB LENGTH | | FINISHED RUNWAY WIDTH | | FINISHED RUNWAY LENGTH | | TOWER CENTER LINE | | DOOR CENTER LINE (IN CASE OF 36" DOOR) | | |
|------------------------|-------------------------|--------|-----------------------|--------|------------------------|--------|-------------------|--------|--|--------|--------|
| | mm | Inches | mm | Inches | mm | Inches | mm | Inches | mm | Inches | |
| 914 | 36 | 1219 | 48 | 1389 | 53 1/2 | 1354 | 53 5/16 | 624 | 24 9/16 | 781 | 30 3/4 |
| 914 | 36 | 1372 | 54 | 1389 | 53 1/2 | 1507 | 59 5/16 | 700 | 27 9/16 | 781 | 30 3/4 |
| 914 | 36 | 1572 | 62 | 1572 | 62 | 1572 | 62 | 700 | 27 9/16 | 781 | 30 3/4 |
| 1067 | 42 | 1372 | 48 | 1511 | 59 1/2 | 1354 | 53 5/16 | 624 | 24 9/16 | 857 | 33 3/4 |
| 1067 | 42 | 1372 | 54 | 1511 | 59 1/2 | 1507 | 59 5/16 | 700 | 27 9/16 | 857 | 33 3/4 |
| 1067 | 42 | 1524 | 60 | 1511 | 59 1/2 | 1659 | 65 5/16 | 776 | 30 9/16 | 857 | 33 3/4 |

Figure 18: Elevation and plan view, enclosure application (Type 1L)



TYPICAL ENCLOSURE WITH EXTENSION & CLEAR PLEXIGLASS DOME & VENTILATION SYSTEM & DOOR OPERATOR

TABLE 1- MAST HEIGHT*

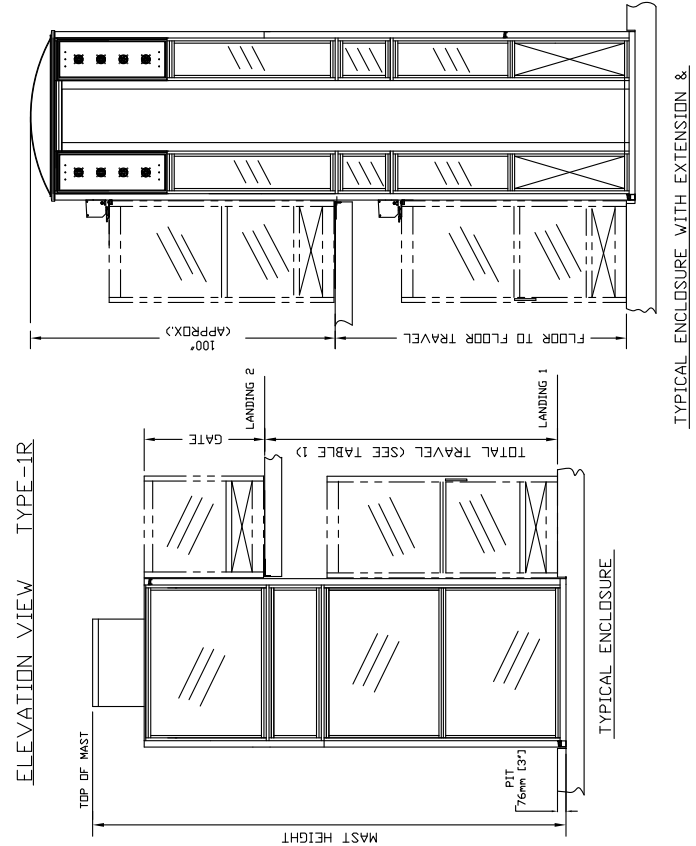
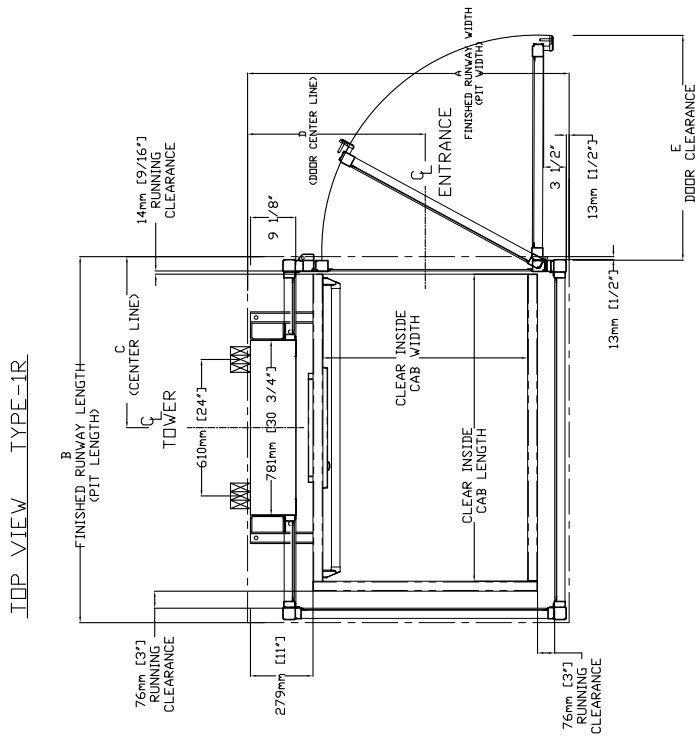
| Max. Travel (Inches) | Extension Height (mm) | Mast Height Approx with Gate with 4, 188" CAP |
|----------------------|-----------------------|---|
| 1219 (48") | 2388 (94") | 1778 (70") |
| 1524 (60") | 1 | 1168 (46") |
| 1829 (72") | 1 | 559 (22") |
| 2438 (96") | 1 | 254 (10") |
| 2743 (108") | 1 | 1 |
| 3048 (120") | 2 | 1 |
| 3658 (144") | 2 | 1 |
| 4267 (168") | 2 | 1 |
| 4877 (192") | 2 | 1 |
| 5486 (216") | 3 | 1 |
| 6096 (240") | 3 | 1 |
| 6706 (264") | 3 | 1 |
| 7010 (276") | 3 | 1 |

*EXAMPLE TABLE WITH 3" PIT. DIMENSIONS VARY WITH TRAVEL

TABLE 2 - ENCLOSURE DIMENSION

| CLEAR INSIDE CAB WIDTH | CLEAR INSIDE CAB LENGTH | FINISHED RUNWAY WIDTH | FINISHED RUNWAY LENGTH | TOWER CENTER LINE | DOOR CENTER LINE (IN CASE OF 90° DOOR) | DOOR CLEARANCE |
|------------------------|-------------------------|-----------------------|------------------------|-------------------|--|----------------|
| mm | mm | mm | mm | mm | mm | mm |
| 914 | 1219 | 1437 | 1483 | 687 | 794 | 1100 |
| 36 | 48 | 58 | 58 | 27 | 31 | 43 |
| 914 | 1372 | 1437 | 1483 | 687 | 794 | 1100 |
| 36 | 54 | 58 | 58 | 27 | 31 | 43 |
| 914 | 1524 | 1437 | 1483 | 687 | 794 | 1100 |
| 36 | 60 | 58 | 58 | 27 | 31 | 43 |
| 1007 | 1219 | 1483 | 1483 | 687 | 870 | 1253 |
| 42 | 48 | 62 | 62 | 27 | 34 | 49 |
| 1007 | 1524 | 1589 | 1788 | 687 | 870 | 1253 |
| 42 | 60 | 62 | 70 | 27 | 34 | 49 |

Figure 19: Elevation and plan view, enclosure application (Type 1R)



TYPICAL ENCLOSURE WITH EXTENSION & CLEAR PLEXIGLASS DOME & VENTILATION SYSTEM & DOOR OPERATOR

TABLE 1 - MAST HEIGHT *

| Max. Travel mm (Inches) | Extension Height mm (Inches) | | Mast Height Approx with Gate with 4.188" CAP | |
|----------------------------|---------------------------------|-------------|--|-------------|
| | mm (Inches) | mm (Inches) | mm (Inches) | mm (Inches) |
| 1219 (48") | 2388 (94") | 1778 (70") | 1168 (46") | 559 (22") |
| 1524 (60") | 1 | 1 | 254 (10") | 1 |
| 1829 (72") | 1 | 1 | 3053 | 120.188 |
| 2438 (96") | 1 | 1 | 3662 | 144.188 |
| 2743 (108") | 1 | 1 | 4272 | 168.188 |
| 3048 (120") | 2 | 1 | 4882 | 192.188 |
| 3658 (144") | 2 | 1 | 5440 | 214.188 |
| 4267 (168") | 2 | 1 | 6050 | 238.188 |
| 4877 (192") | 2 | 1 | 6660 | 262.188 |
| 5486 (216") | 3 | 1 | 7269 | 286.188 |
| 6096 (240") | 3 | 1 | 7828 | 308.188 |
| 6706 (264") | 3 | 1 | 8438 | 332.188 |
| 7010 (276") | 3 | 1 | 8692 | 342.188 |

*EXAMPLE TABLE WITH 3" PIT. DIMENSIONS VARY WITH TRAVEL

TABLE 2 - ENCLOSURE DIMENSION

| CLEAR INSIDE CAB WIDTH mm Inches | CLEAR INSIDE CAB LENGTH mm Inches | A | | B | | C | | D | | E | |
|---|--|---------------------------------------|--|---------------------------------------|--|-----------------------------------|-----------------------------------|---|----------------------------------|--------------------------------|--------------------------------|
| | | FINISHED RUNWAY WIDTH mm Inches | FINISHED RUNWAY LENGTH mm Inches | FINISHED RUNWAY WIDTH mm Inches | FINISHED RUNWAY LENGTH mm Inches | TOWER CENTER LINE mm Inches | TOWER CENTER LINE mm Inches | DOOR CENTER LINE (IN CASE OF 30" DOOR) mm Inches | DOOR CENTER LINE mm Inches | DOOR CLEARANCE mm Inches | DOOR CLEARANCE mm Inches |
| 814 | 1219 | 1437 | 1433 | 657 | 657 | 764 | 764 | 31 1/4 | 31 1/4 | 1100 | 43 5/16 |
| 814 | 1372 | 1535 | 1535 | 754 | 754 | 870 | 870 | 31 1/4 | 31 1/4 | 1100 | 43 5/16 |
| 814 | 1524 | 1635 | 1635 | 854 | 854 | 984 | 984 | 31 1/4 | 31 1/4 | 1100 | 43 5/16 |
| 1067 | 1219 | 1437 | 1433 | 657 | 657 | 764 | 764 | 34 1/4 | 34 1/4 | 1253 | 49 5/16 |
| 1067 | 1372 | 1535 | 1535 | 754 | 754 | 870 | 870 | 34 1/4 | 34 1/4 | 1253 | 49 5/16 |
| 1067 | 1524 | 1635 | 1635 | 854 | 854 | 984 | 984 | 34 1/4 | 34 1/4 | 1253 | 49 5/16 |

Figure 20: Elevation and plan view, enclosure application (Type 2)

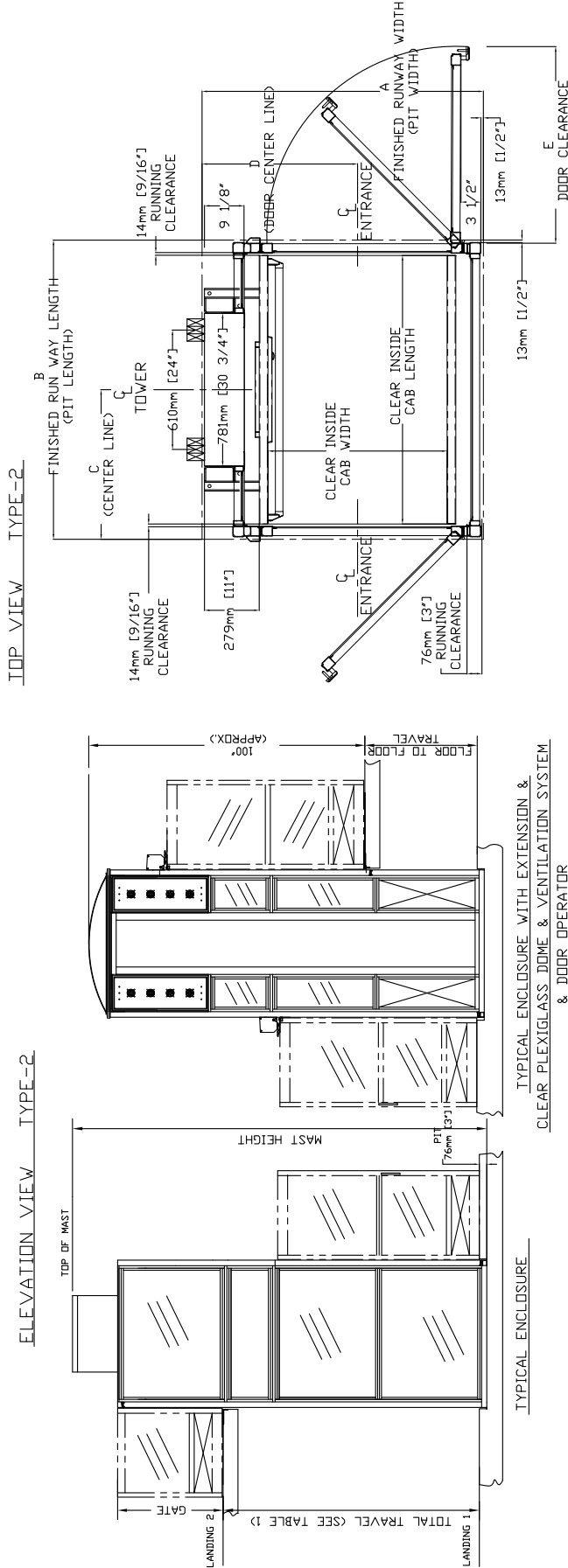


TABLE 1- MAST HEIGHT *

| Max. Travel mm (Inches) | Extension Height mm (Inches) | | Mast Height Approx with Gate with 4.188" CAP | |
|----------------------------|---------------------------------|------------|--|-----------|
| | 2388 (94") | 1778 (70") | 1168 (46") | 559 (22") |
| 1219 (48") | 1 | 1 | 1 | 1 |
| 1524 (60") | 1 | 1 | 1 | 1 |
| 1829 (72") | 1 | 1 | 1 | 1 |
| 2133 (84") | 1 | 1 | 1 | 1 |
| 2438 (96") | 1 | 1 | 1 | 1 |
| 2743 (108") | 1 | 1 | 1 | 1 |
| 3048 (120") | 2 | 1 | 1 | 1 |
| 3353 (132") | 2 | 1 | 1 | 1 |
| 3658 (144") | 2 | 1 | 1 | 1 |
| 3963 (156") | 2 | 1 | 1 | 1 |
| 4268 (168") | 2 | 1 | 1 | 1 |
| 4573 (180") | 3 | 1 | 1 | 1 |
| 4878 (192") | 3 | 1 | 1 | 1 |
| 5183 (204") | 3 | 1 | 1 | 1 |
| 5488 (216") | 3 | 1 | 1 | 1 |
| 5793 (228") | 3 | 1 | 1 | 1 |
| 6098 (240") | 3 | 1 | 1 | 1 |
| 6403 (252") | 3 | 1 | 1 | 1 |
| 6708 (264") | 3 | 1 | 1 | 1 |
| 7013 (276") | 3 | 1 | 1 | 1 |

*EXAMPLE TABLE WITH 3" PIT, DIMENSIONS VARY WITH TRAVEL

TABLE 2 - ENCLOSURE DIMENSION

| CLEAR INSIDE CAB WIDTH mm | CLEAR INSIDE CAB LENGTH mm | A | | B | | C | | D | | E | |
|---------------------------------|----------------------------------|-----------------------------|------------------------------|-----------------------------|------------------------------|-------------------------|---|------------------------|----------------------|---------|--|
| | | FINISHED RUNWAY WIDTH mm | FINISHED RUNWAY LENGTH mm | FINISHED RUNWAY WIDTH mm | FINISHED RUNWAY LENGTH mm | TOWER CENTER LINE mm | DOOR CENTER LINE (IN CASE OF 36" DOOR) mm | DOOR CENTER LINE mm | DOOR CLEARANCE mm | | |
| 914 | 1219 | 1437 | 1378 | 56 9/16 | 54 3/16 | 697 | 794 | 31 1/4 | 1100 | 43 5/16 | |
| 914 | 1372 | 1437 | 1529 | 56 9/16 | 60 3/16 | 764 | 794 | 31 1/4 | 1100 | 43 5/16 | |
| 1067 | 1524 | 1589 | 1681 | 62 9/16 | 66 3/16 | 840 | 870 | 34 1/4 | 1253 | 48 5/16 | |
| 1067 | 1677 | 1643 | 1735 | 62 9/16 | 66 3/16 | 840 | 870 | 34 1/4 | 1253 | 48 5/16 | |
| 1067 | 1830 | 1888 | 1980 | 62 9/16 | 66 3/16 | 840 | 870 | 34 1/4 | 1253 | 48 5/16 | |

Figure 21: Elevation and plan view, enclosure application (Type 3, 45" opening)

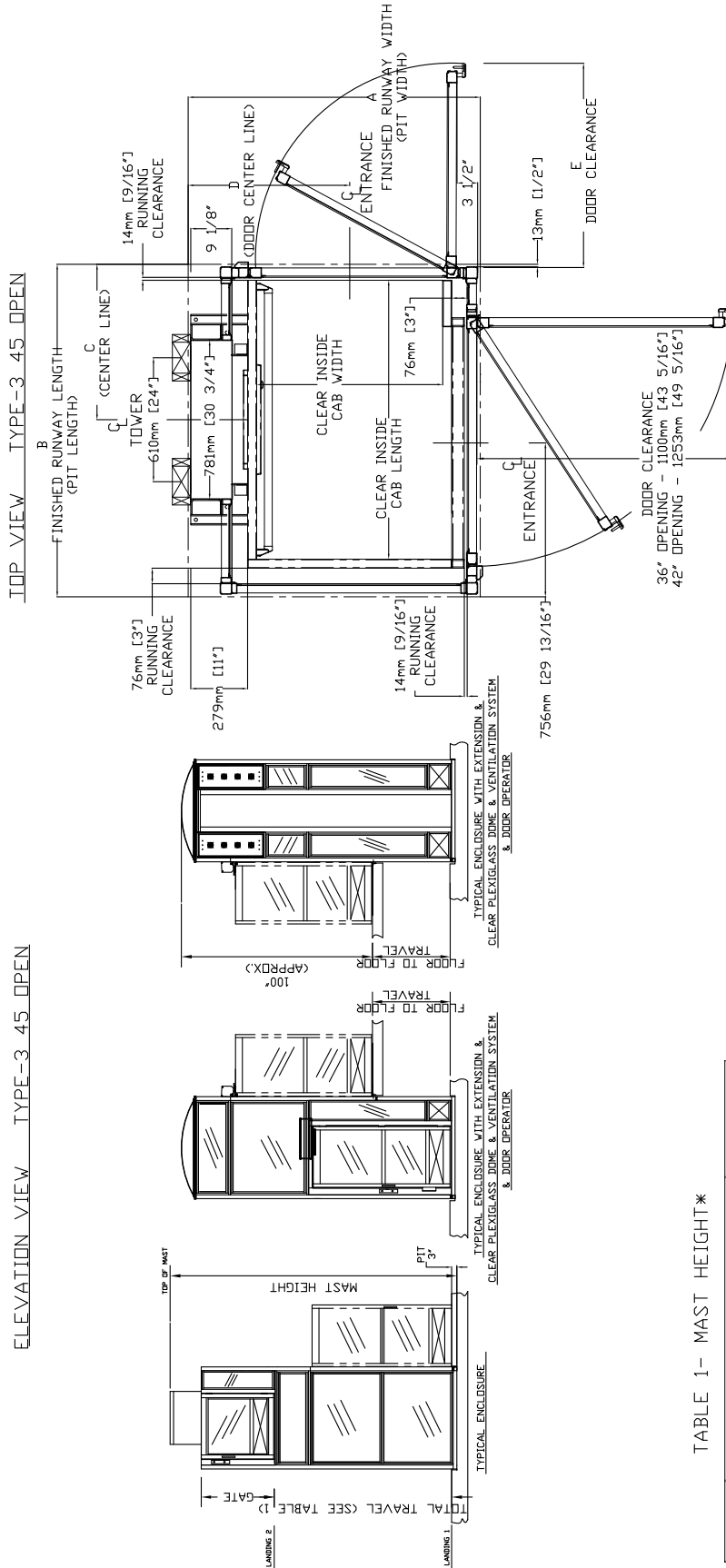


TABLE 2 - ENCLOSURE DIMENSION

| CLEAR INSIDE CAB WIDTH | CLEAR INSIDE CAB LENGTH | | FINISHED RUNWAY WIDTH | | FINISHED RUNWAY LENGTH | | TOWER CENTER LINE | | DOOR CENTER LINE (IN CASE OF 36" DOOR) | | DOOR CLEARANCE | | |
|------------------------|-------------------------|--------|-----------------------|--------|------------------------|--------|-------------------|--------|--|--------|----------------|--------|---------|
| | mm | Inches | mm | Inches | mm | Inches | mm | Inches | mm | Inches | mm | Inches | |
| 814 | 36 | 1219 | 48 | 1437 | 56 9/16 | 1453 | 58 3/8 | 887 | 27 1/16 | 784 | 31 1/4 | 1100 | 43 5/16 |
| 814 | 36 | 1524 | 60 | 1437 | 56 9/16 | 1788 | 70 3/8 | 840 | 33 1/16 | 784 | 31 1/4 | 1100 | 43 5/16 |
| 1067 | 42 | 1219 | 48 | 1589 | 62 9/16 | 1483 | 58 3/8 | 887 | 27 1/16 | 870 | 34 1/4 | 1253 | 49 5/16 |
| 1067 | 42 | 1372 | 54 | 1589 | 62 9/16 | 1635 | 64 3/8 | 764 | 30 1/16 | 870 | 34 1/4 | 1253 | 49 5/16 |
| 1067 | 42 | 1524 | 60 | 1589 | 62 9/16 | 1788 | 70 3/8 | 840 | 33 1/16 | 870 | 34 1/4 | 1253 | 49 5/16 |

TABLE 1 - MAST HEIGHT *

| Max. Travel mm (Inches) | Extension Height mm (Inches) | | Mast Height Approx with Gate with 4.188" CAP mm (Inches) |
|-------------------------|------------------------------|---|--|
| | 1 | 2 | |
| 1219 (48") | 1 | 1 | 2748 108.188 |
| 1524 (60") | 1 | 1 | 3053 120.188 |
| 1829 (72") | 1 | 1 | 3662 144.188 |
| 2438 (96") | 1 | 1 | 4272 168.188 |
| 2743 (108") | 1 | 1 | 4272 168.188 |
| 3048 (120") | 2 | 1 | 4882 192.188 |
| 3658 (144") | 2 | 1 | 5440 214.188 |
| 4267 (168") | 2 | 1 | 6050 238.188 |
| 4877 (192") | 2 | 1 | 6660 262.188 |
| 5486 (216") | 3 | 1 | 7269 286.188 |
| 6096 (240") | 3 | 1 | 7828 308.188 |
| 6706 (264") | 3 | 1 | 8438 332.188 |
| 7010 (276") | 3 | 1 | 8692 342.188 |

*EXAMPLE TABLE WITH 3" PIT, DIMENSIONS VARY WITH TRAVEL

Figure 23: Auto door, left-hand

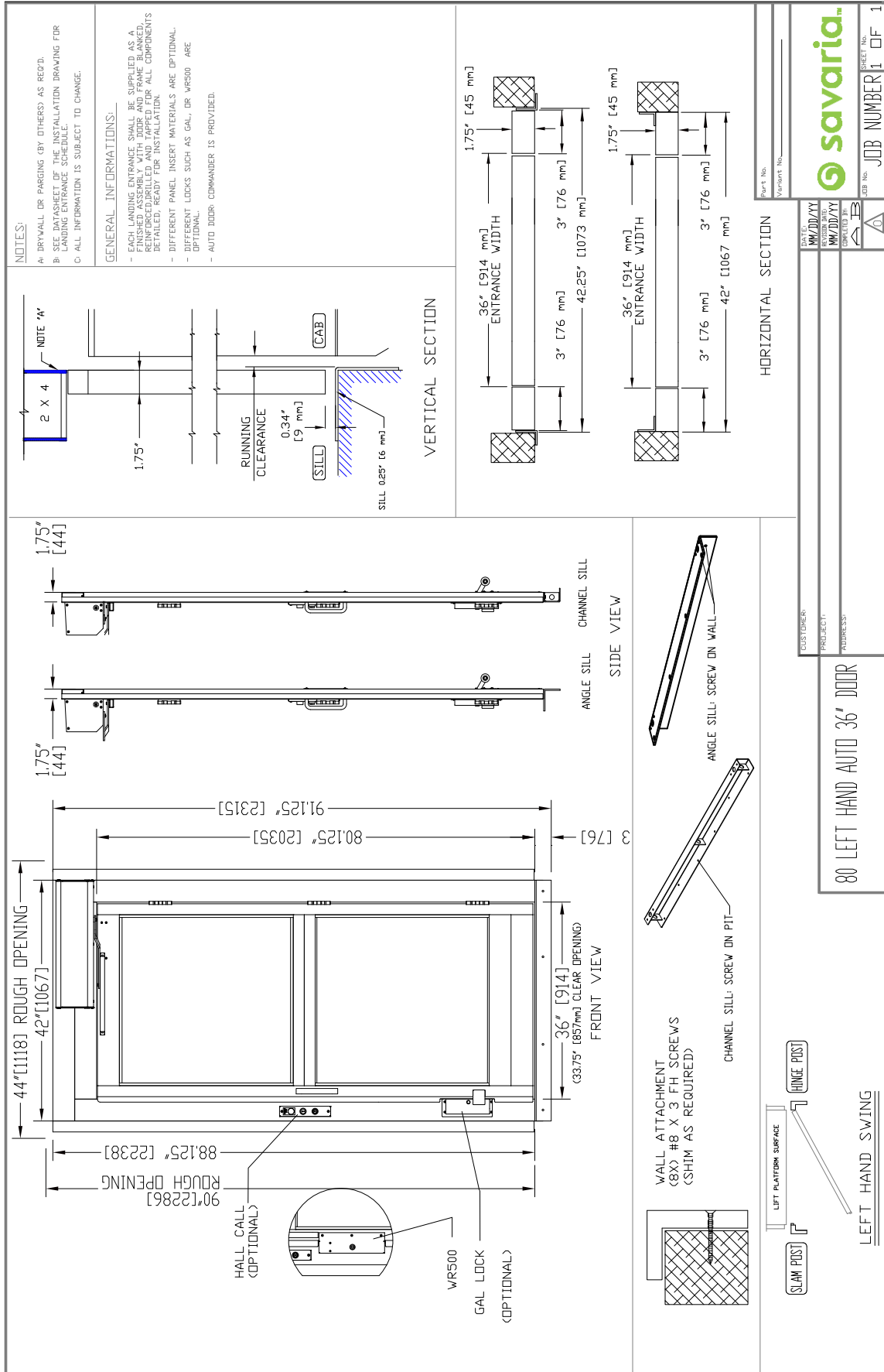


Figure 24: Auto door, right-hand

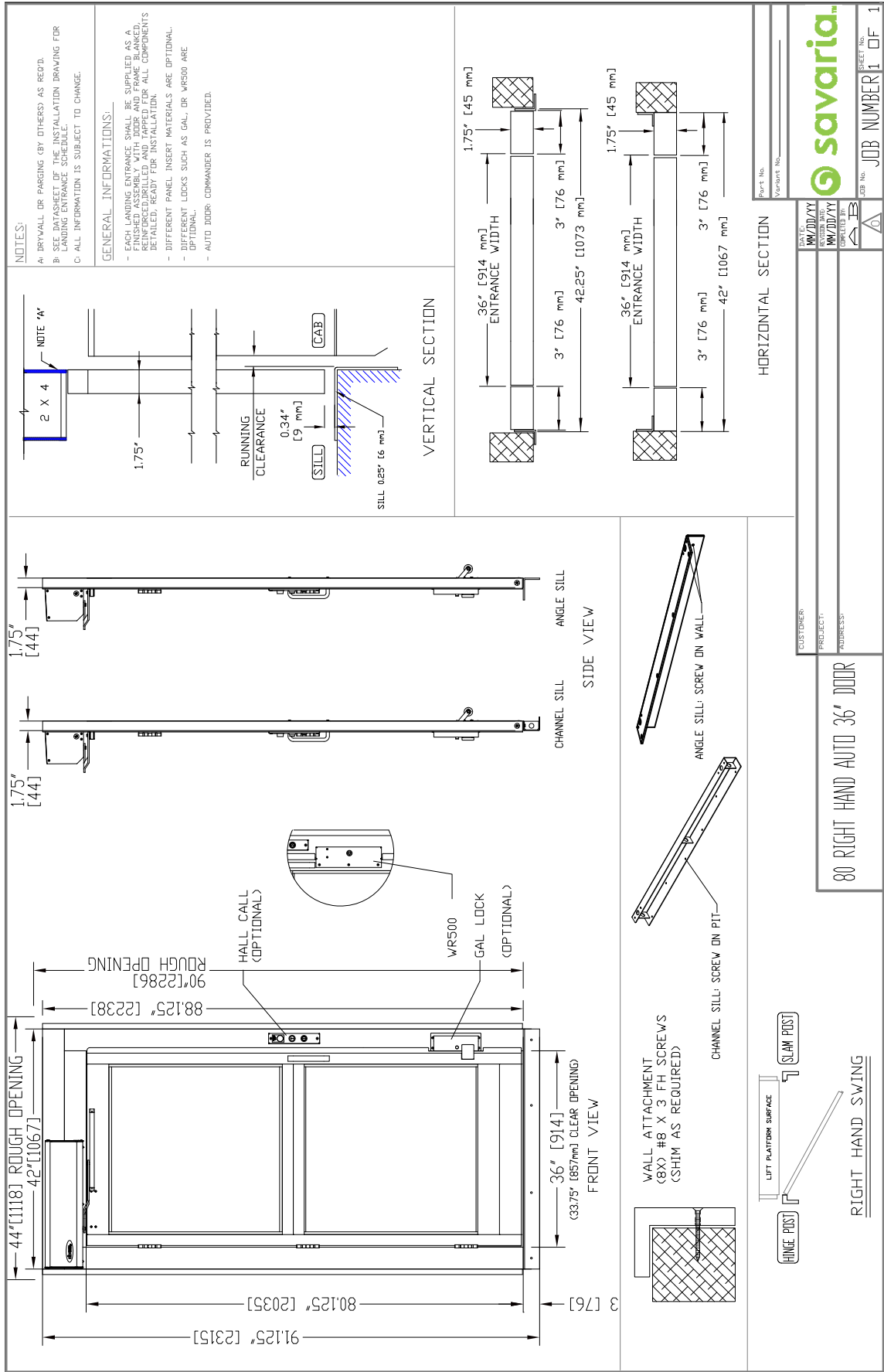


Figure 25: Manual door, left-hand

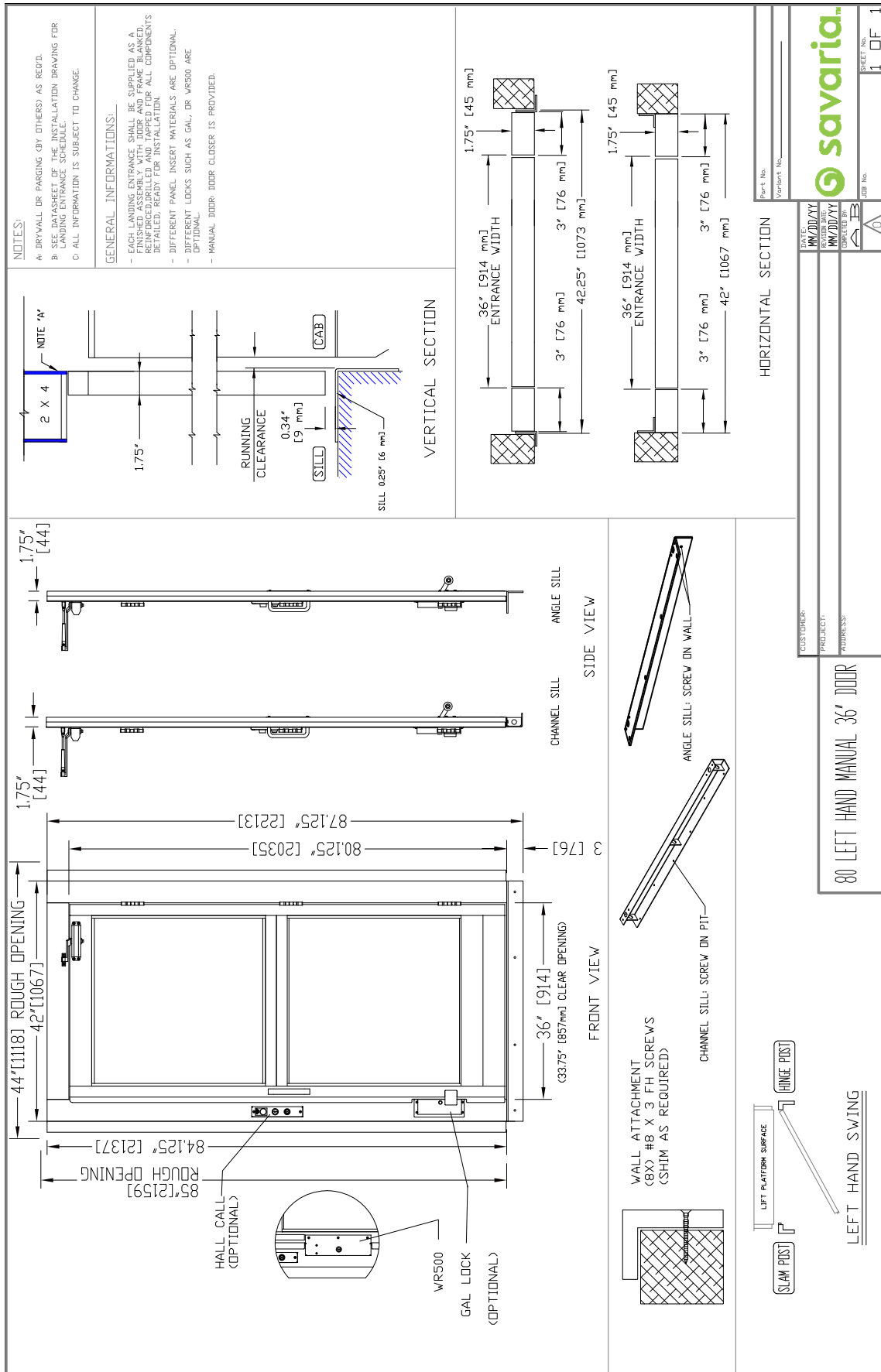


Figure 26: Manual door, right-hand

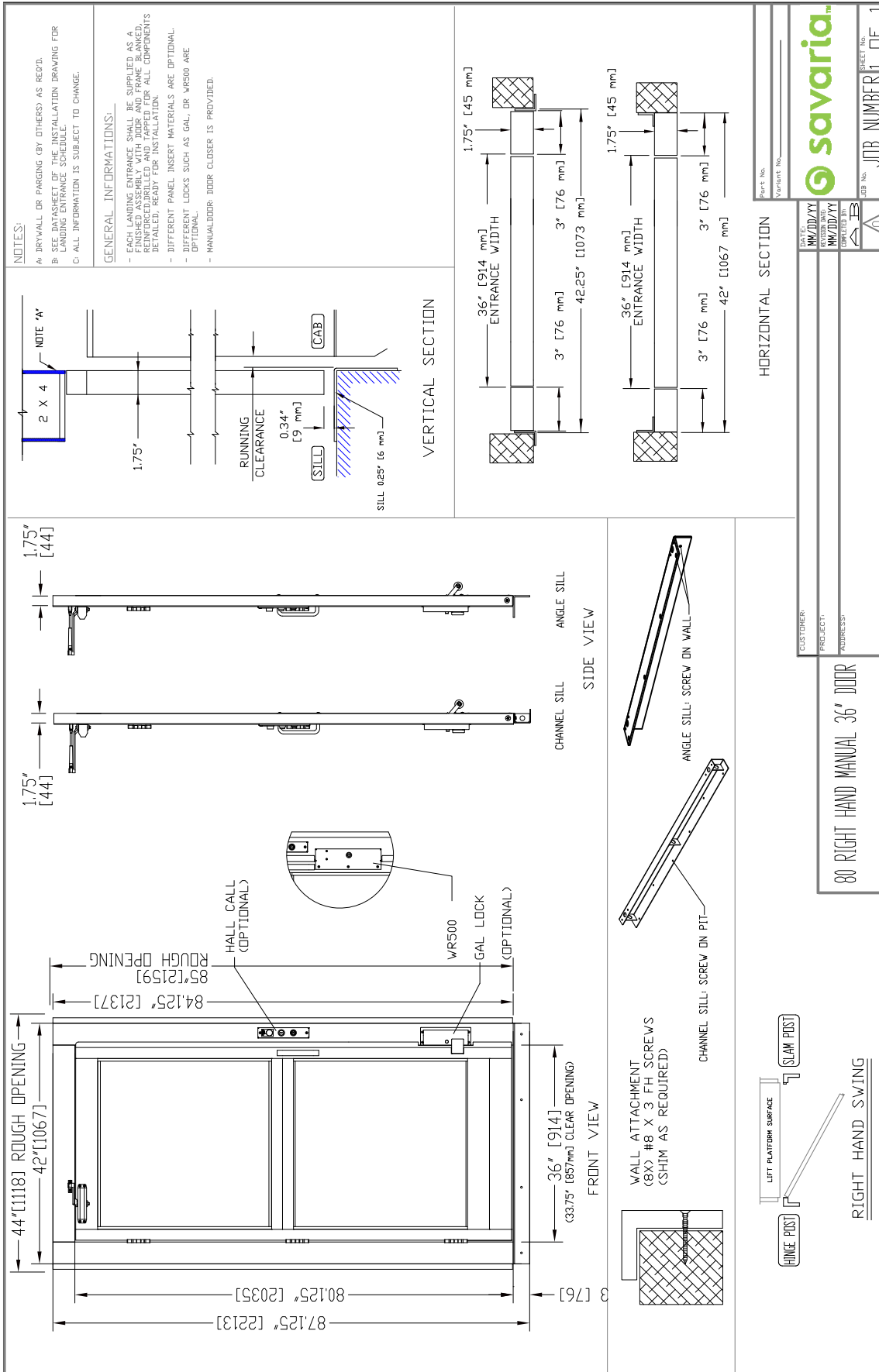


Figure 27: Prodoor auto, left-hand

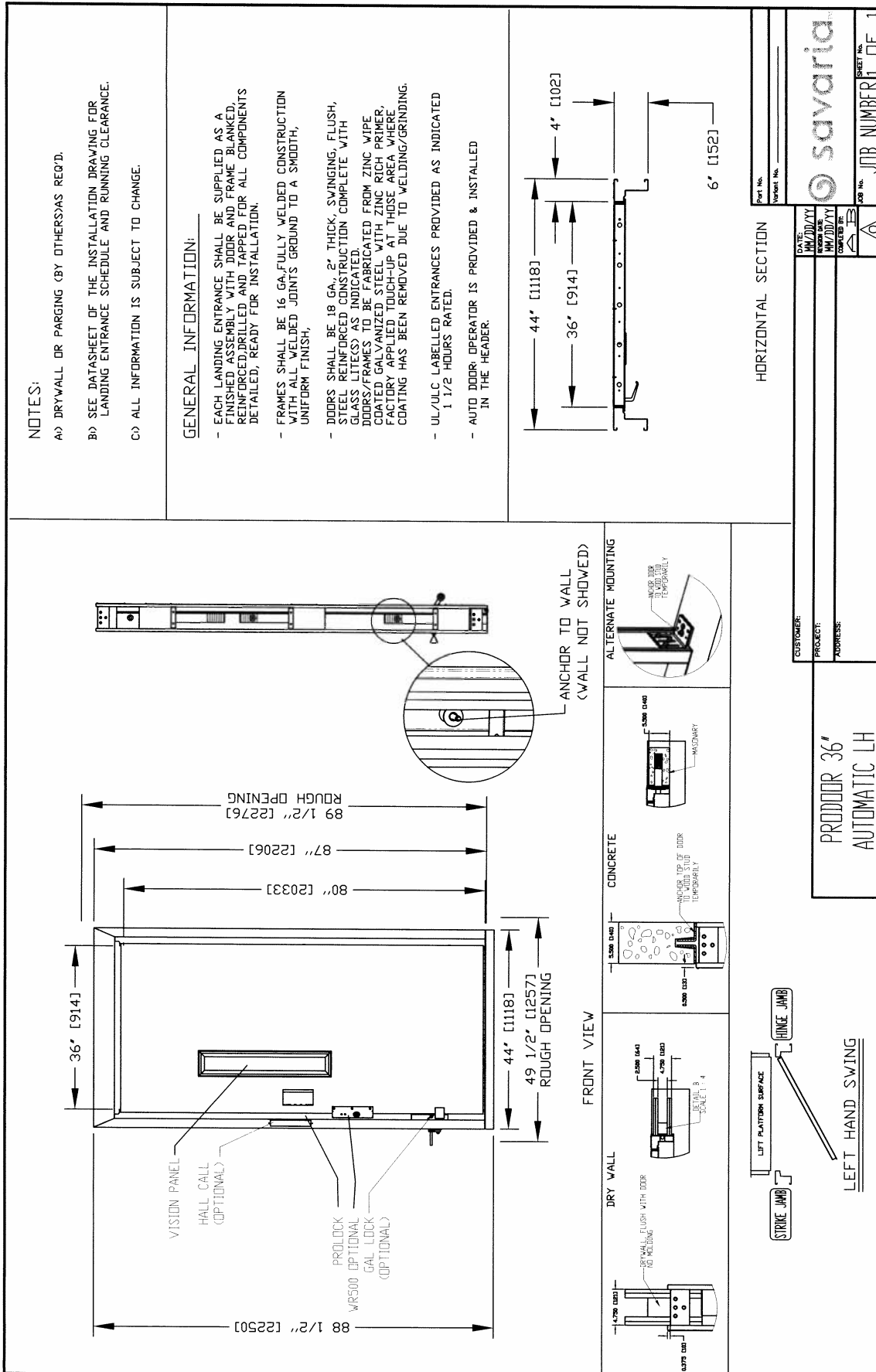


Figure 28: Prodoor auto, right-hand

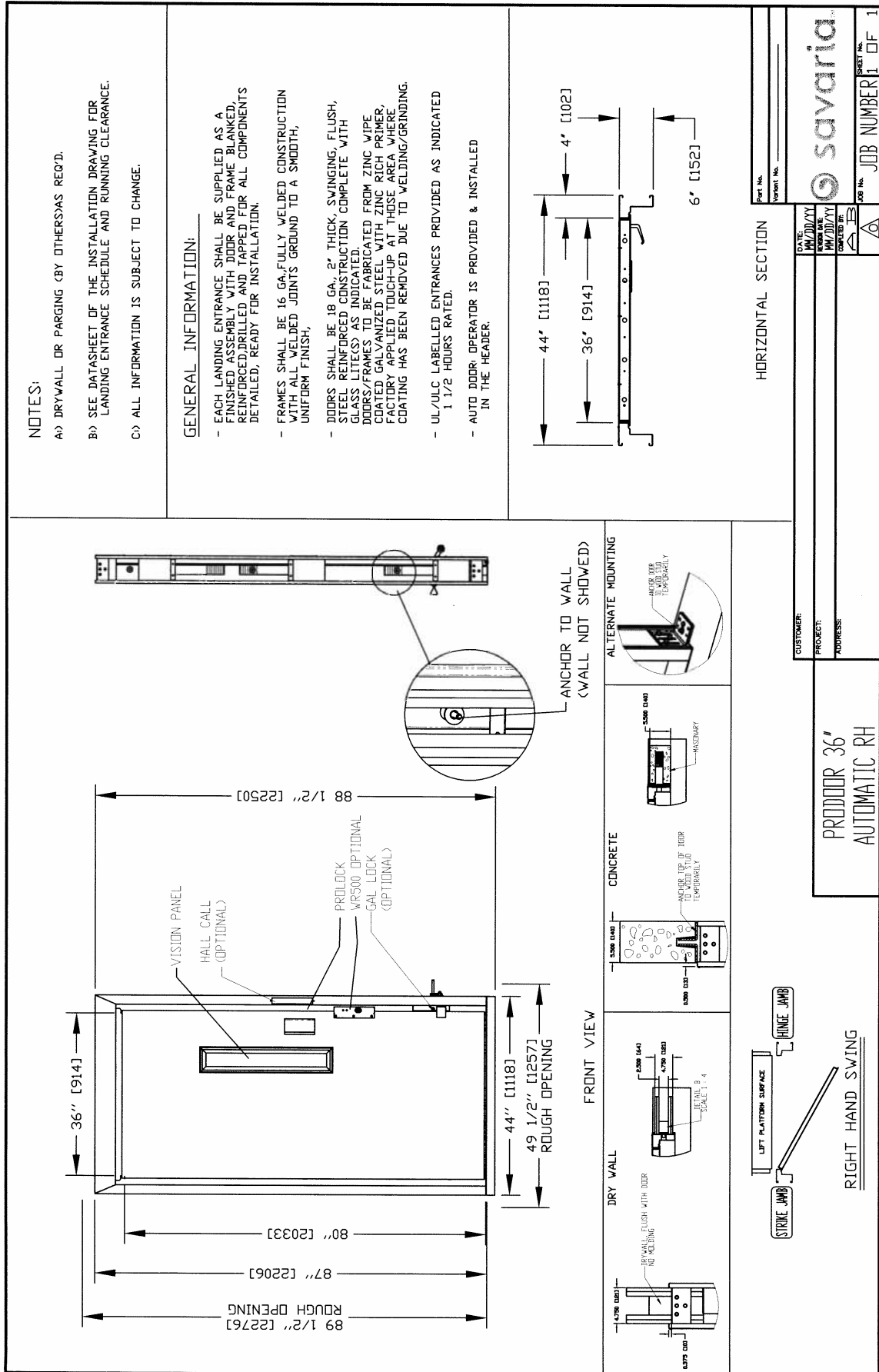


Figure 29: Prodoor manual, left-hand

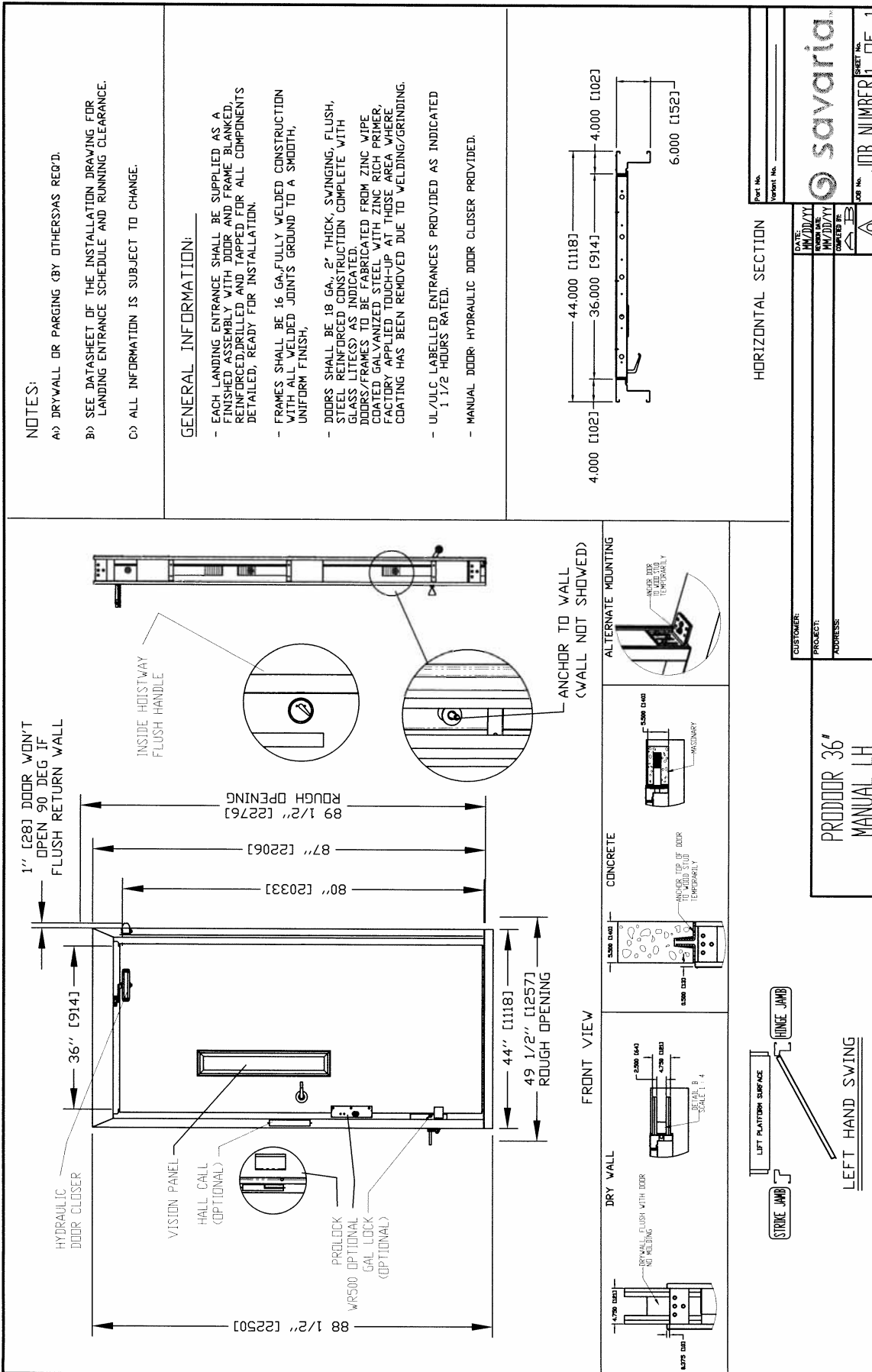


Figure 31: Auto half gate, left-hand

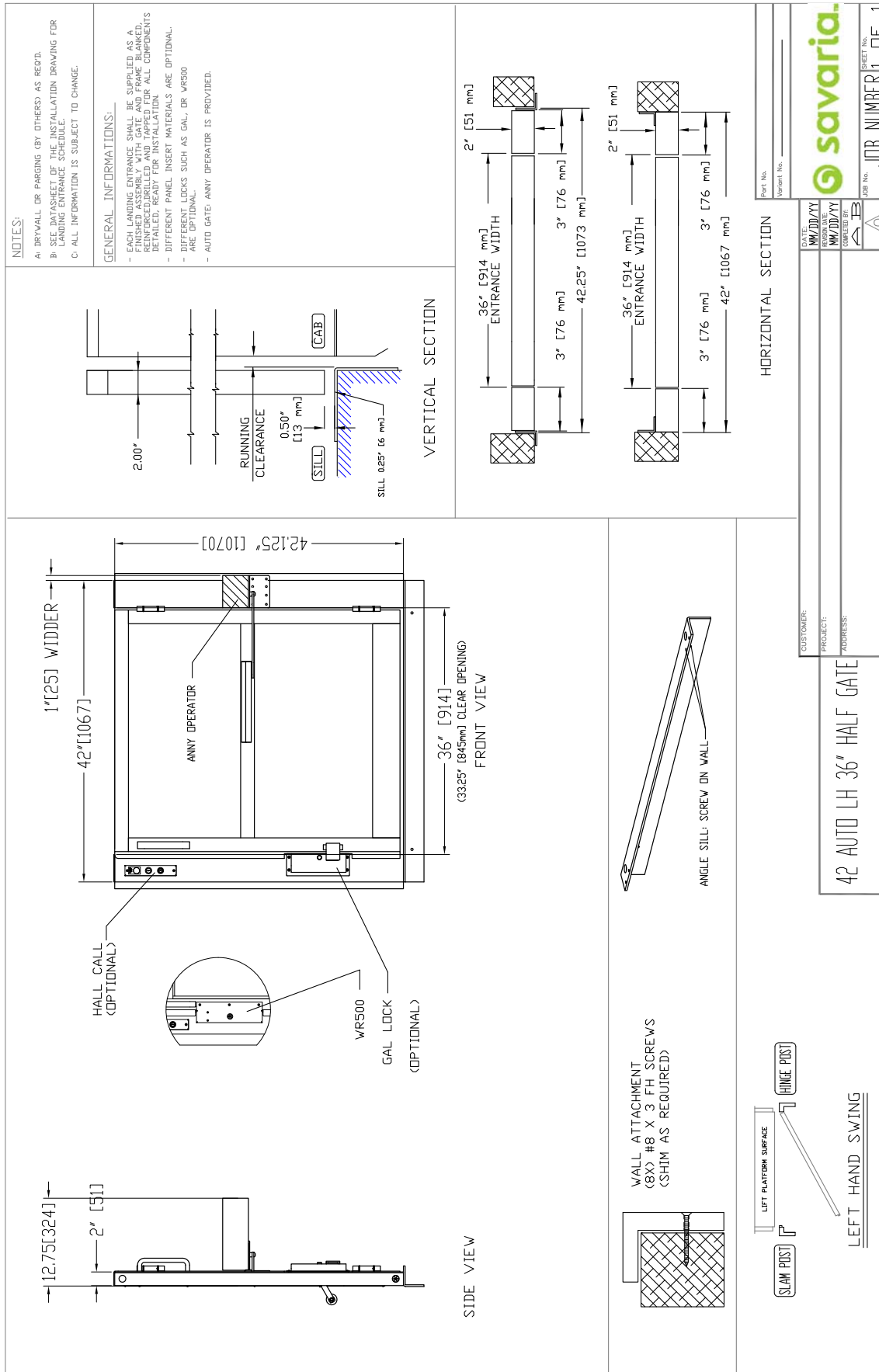


Figure 32: Auto half gate, right-hand

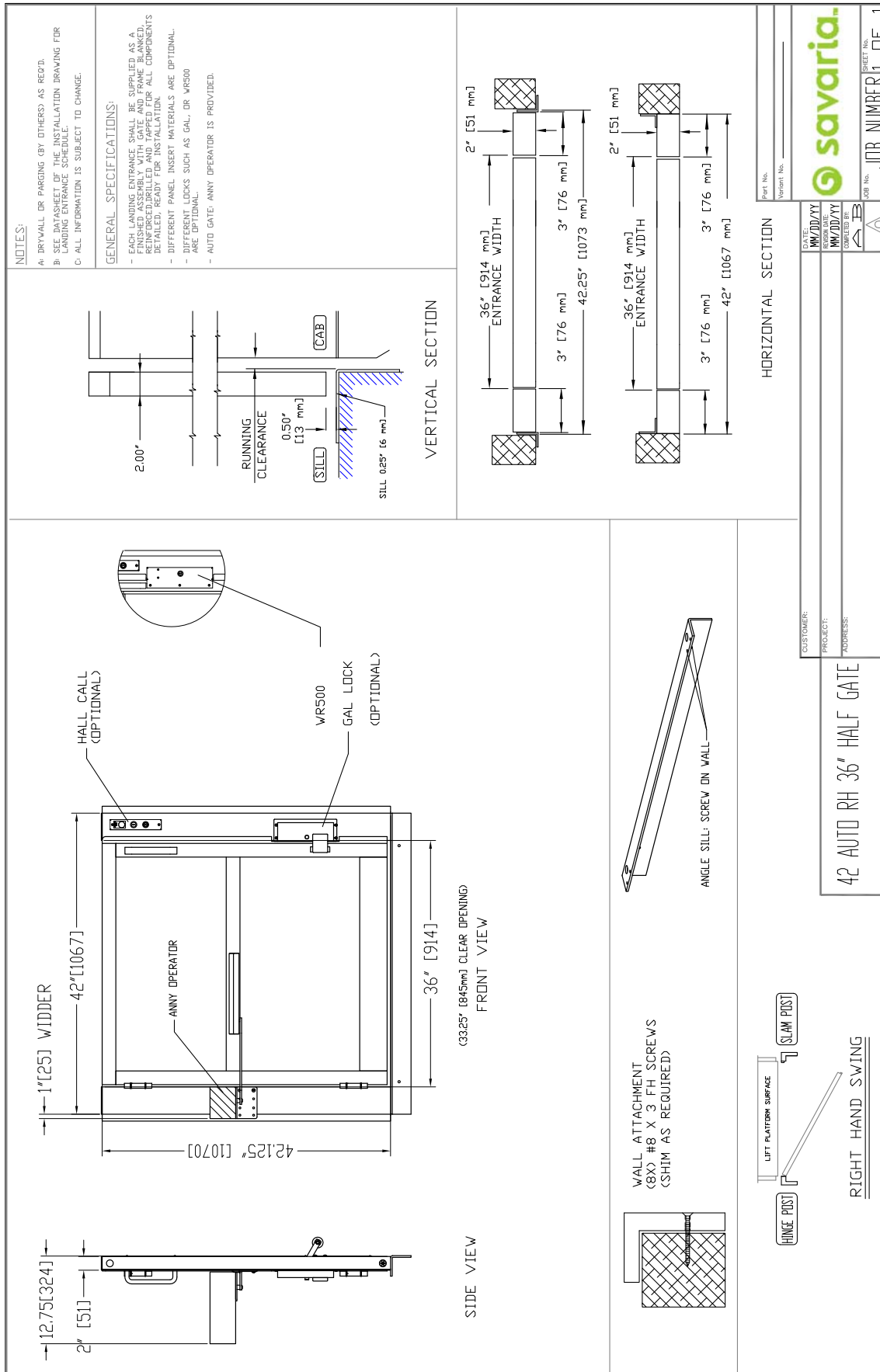


Figure 33: Manual half gate, left-hand

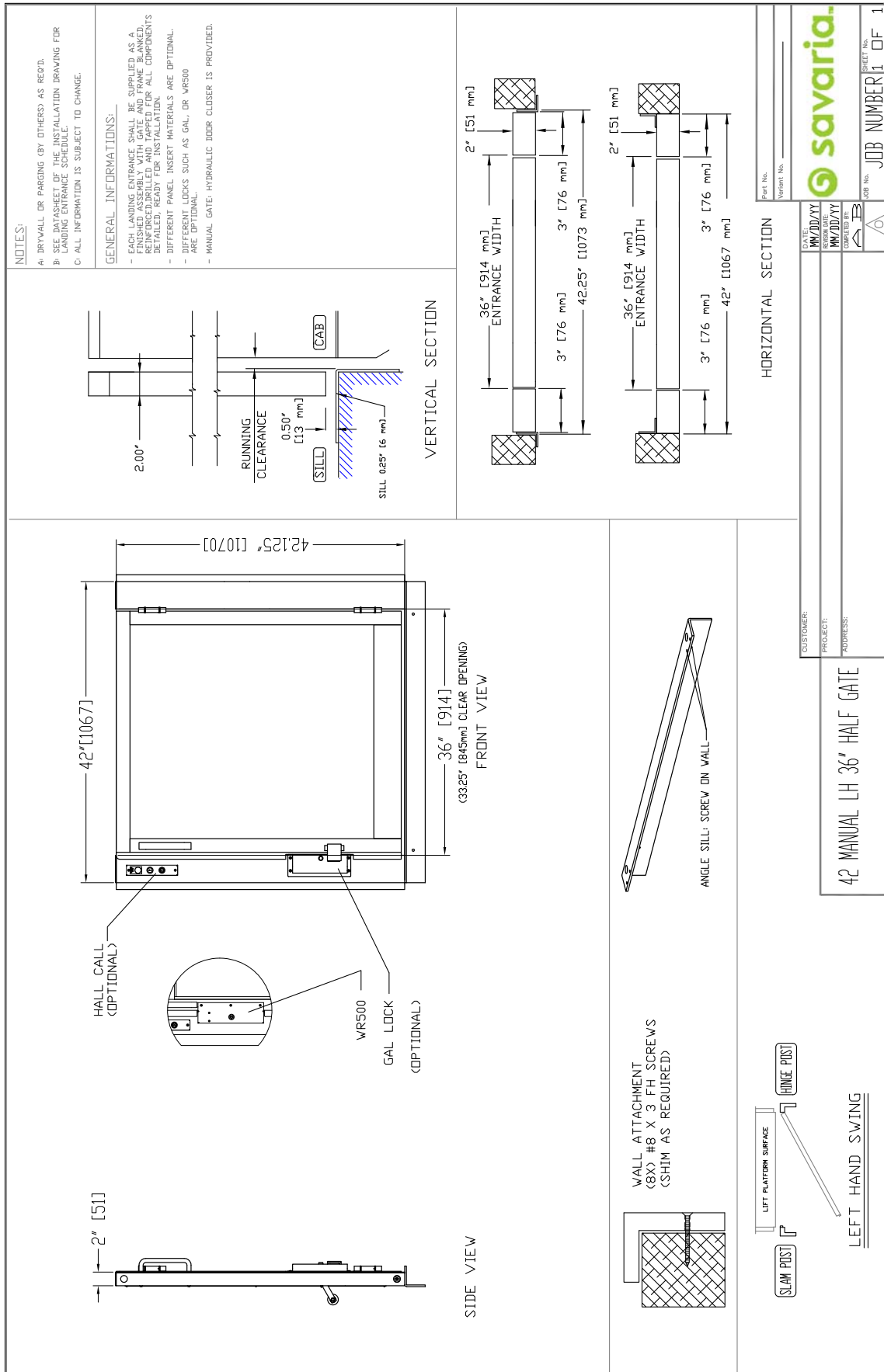


Figure 34: Manual half gate, right-hand

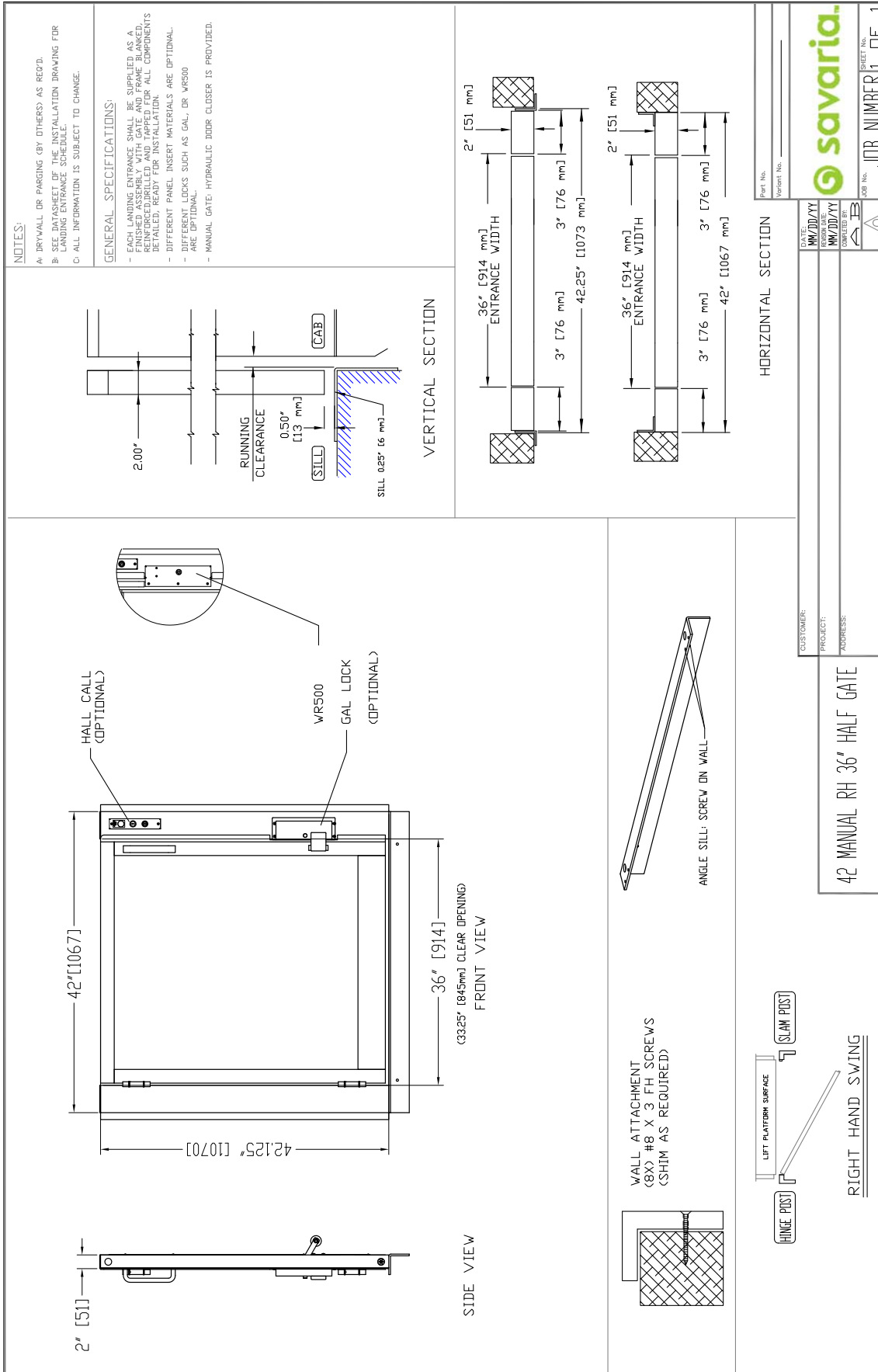


Figure 35: DuraSwing on half gate, right-hand

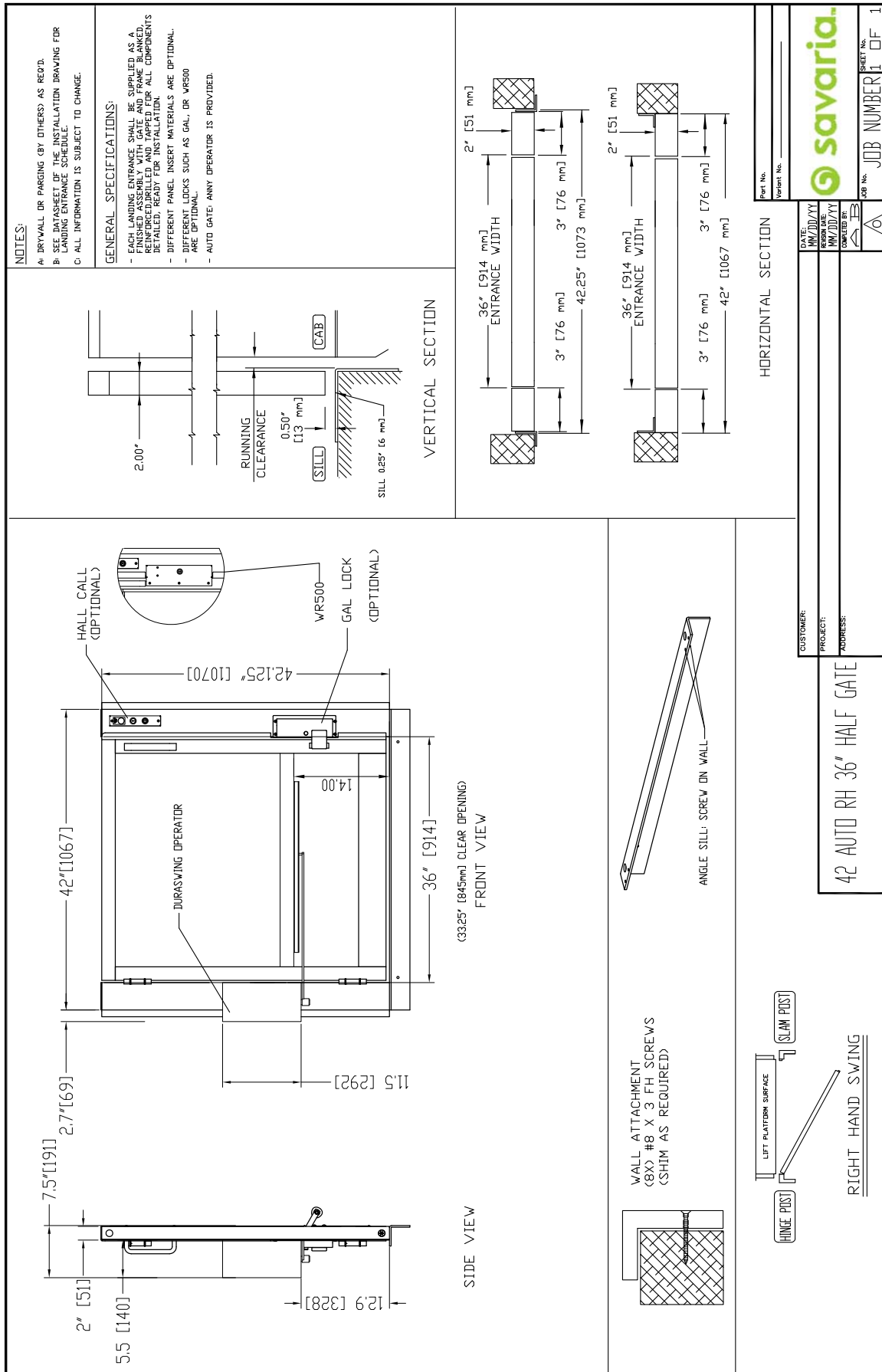


Figure 36: DuraSwing on half gate, right-hand, 45" opening

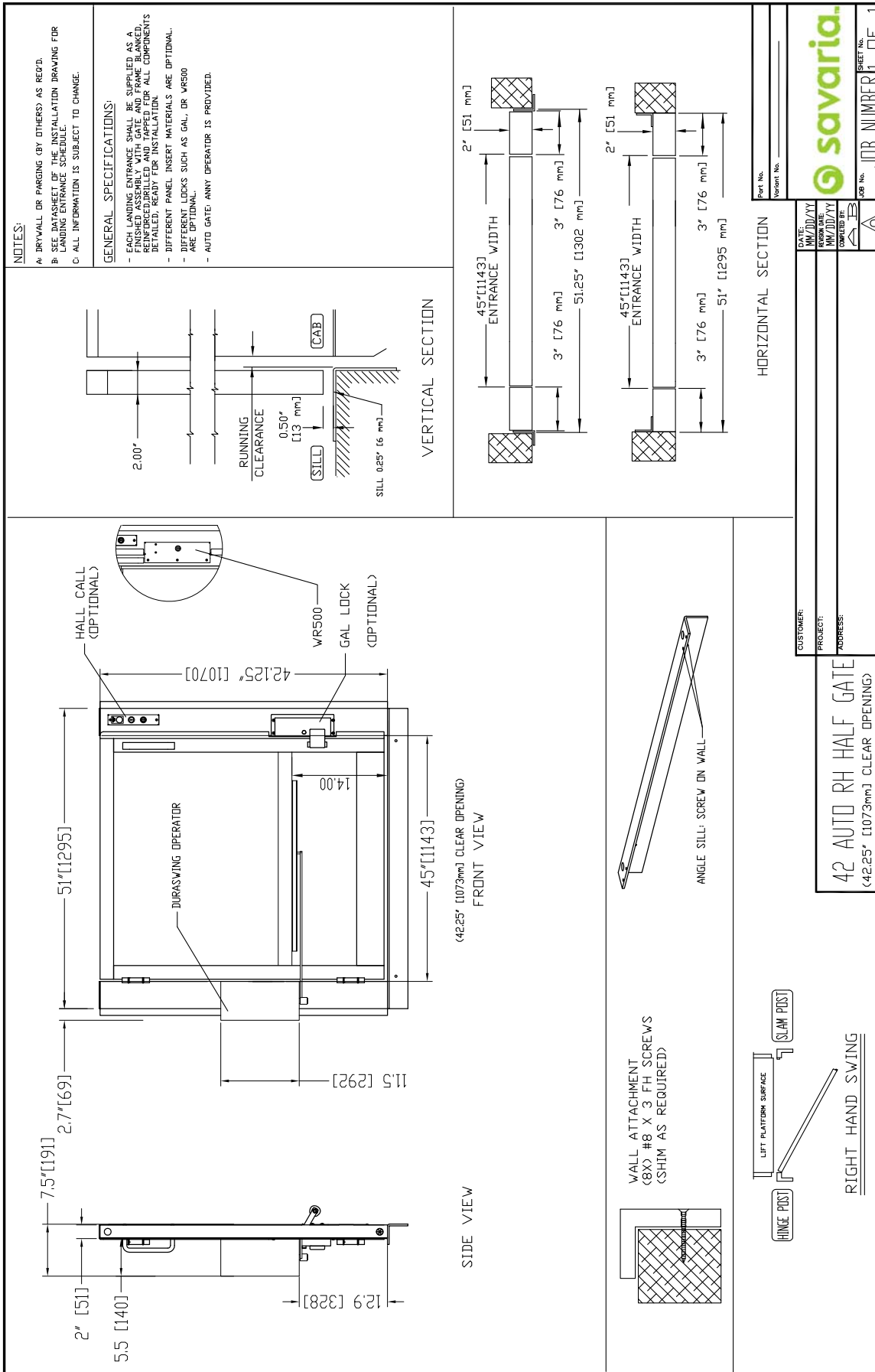


Figure 37: DuraSwing on half gate, left-hand

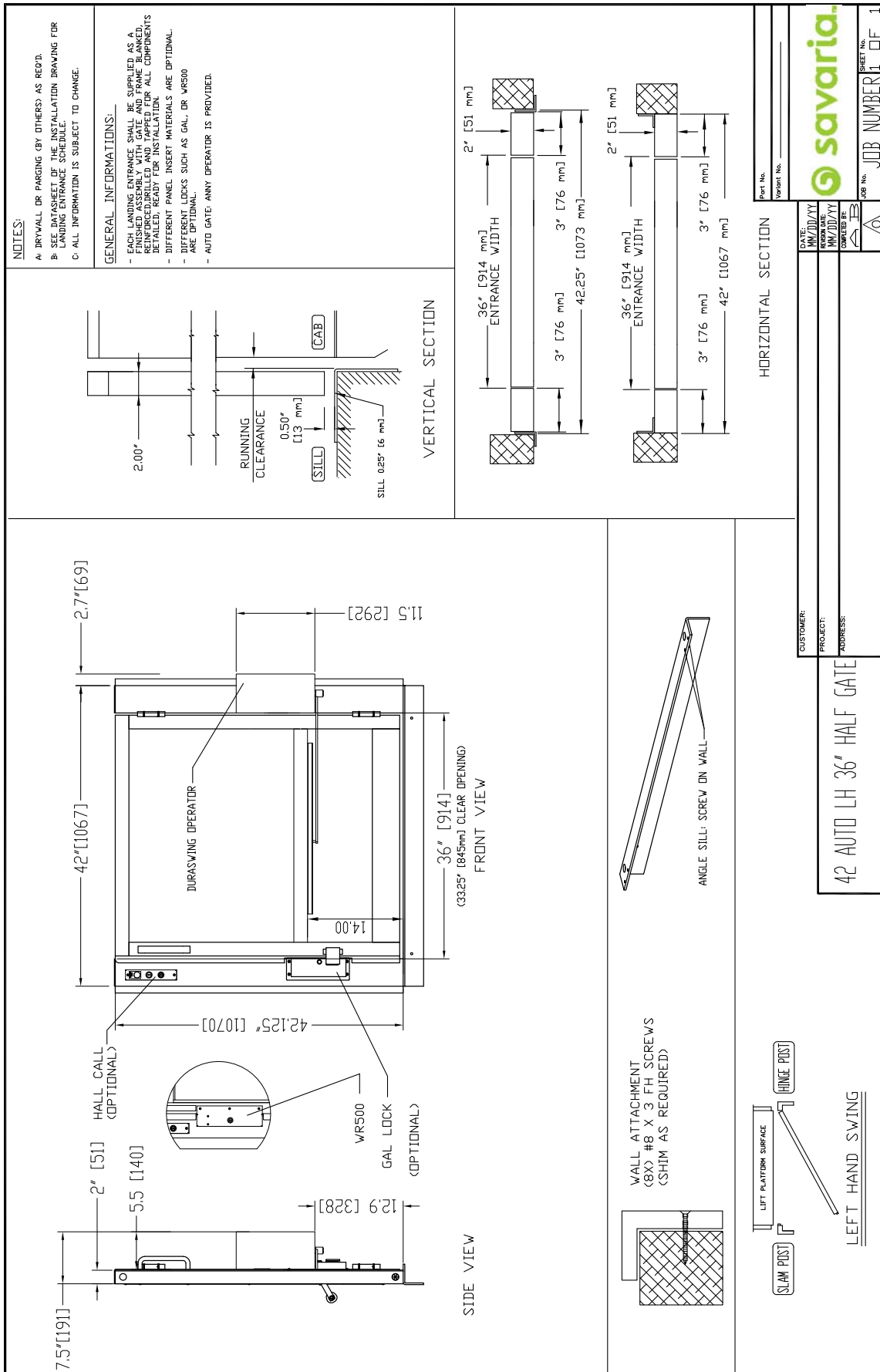


Figure 38: DuraSwing on half gate, left-hand, 45" opening

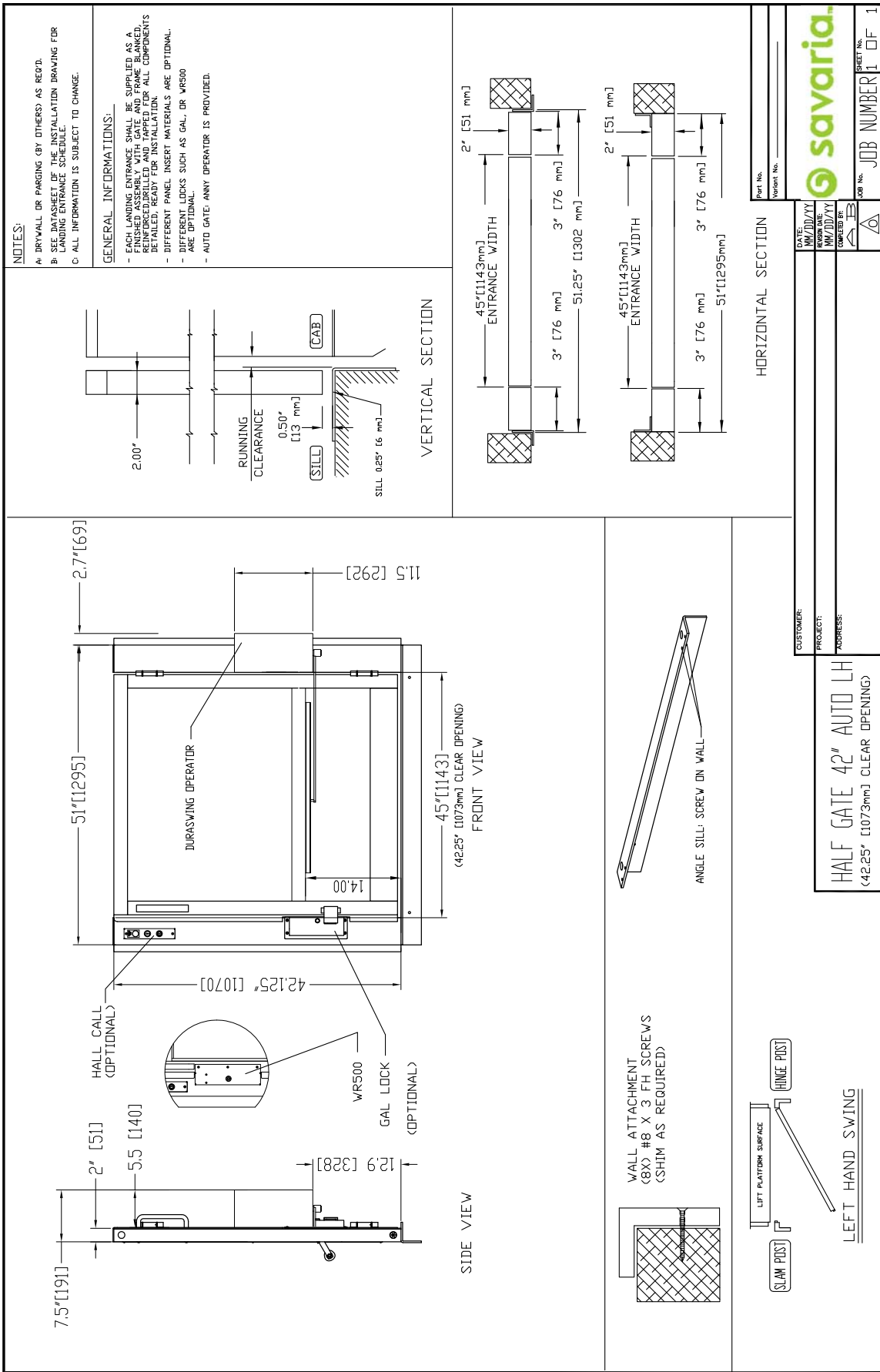
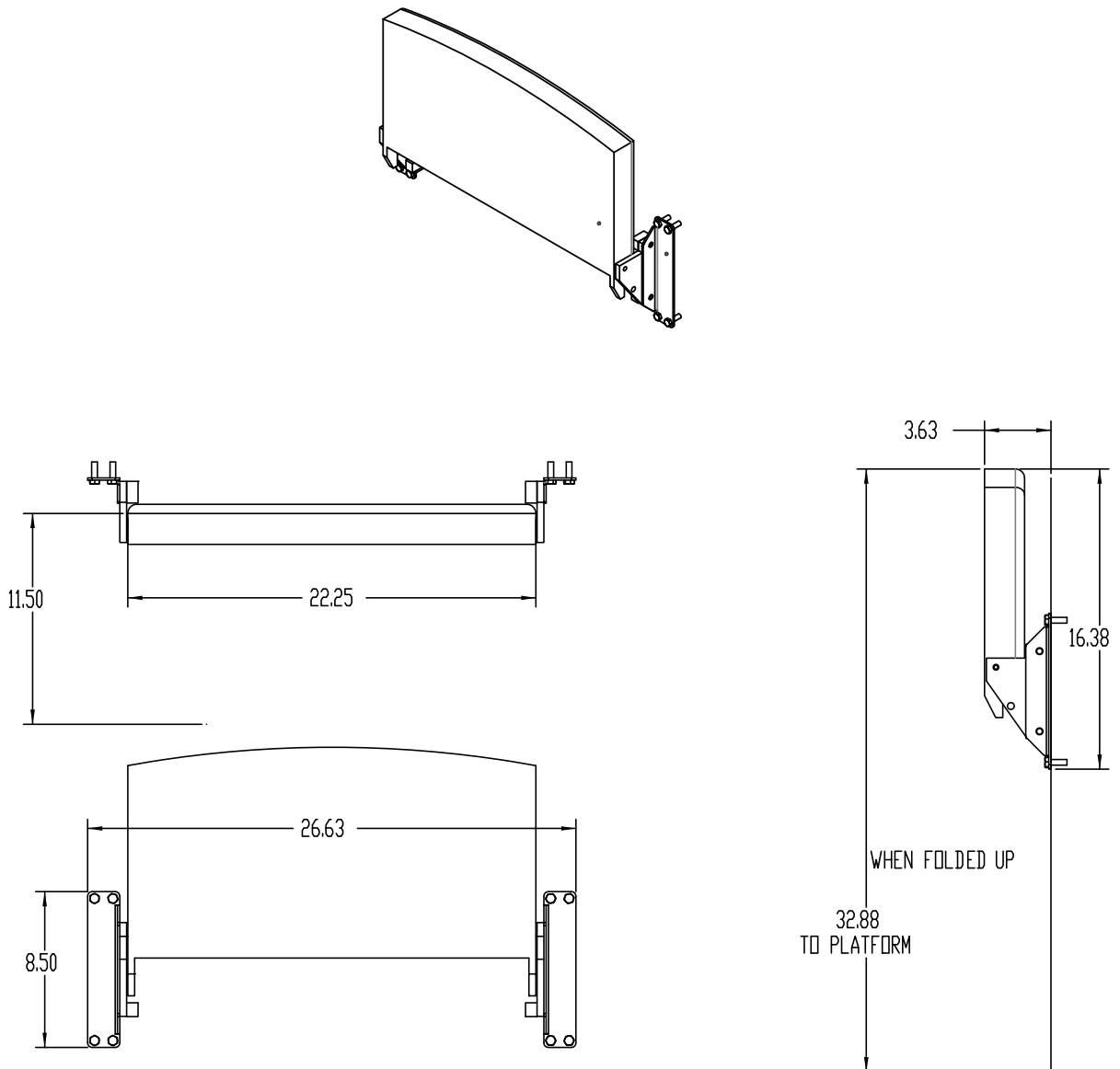
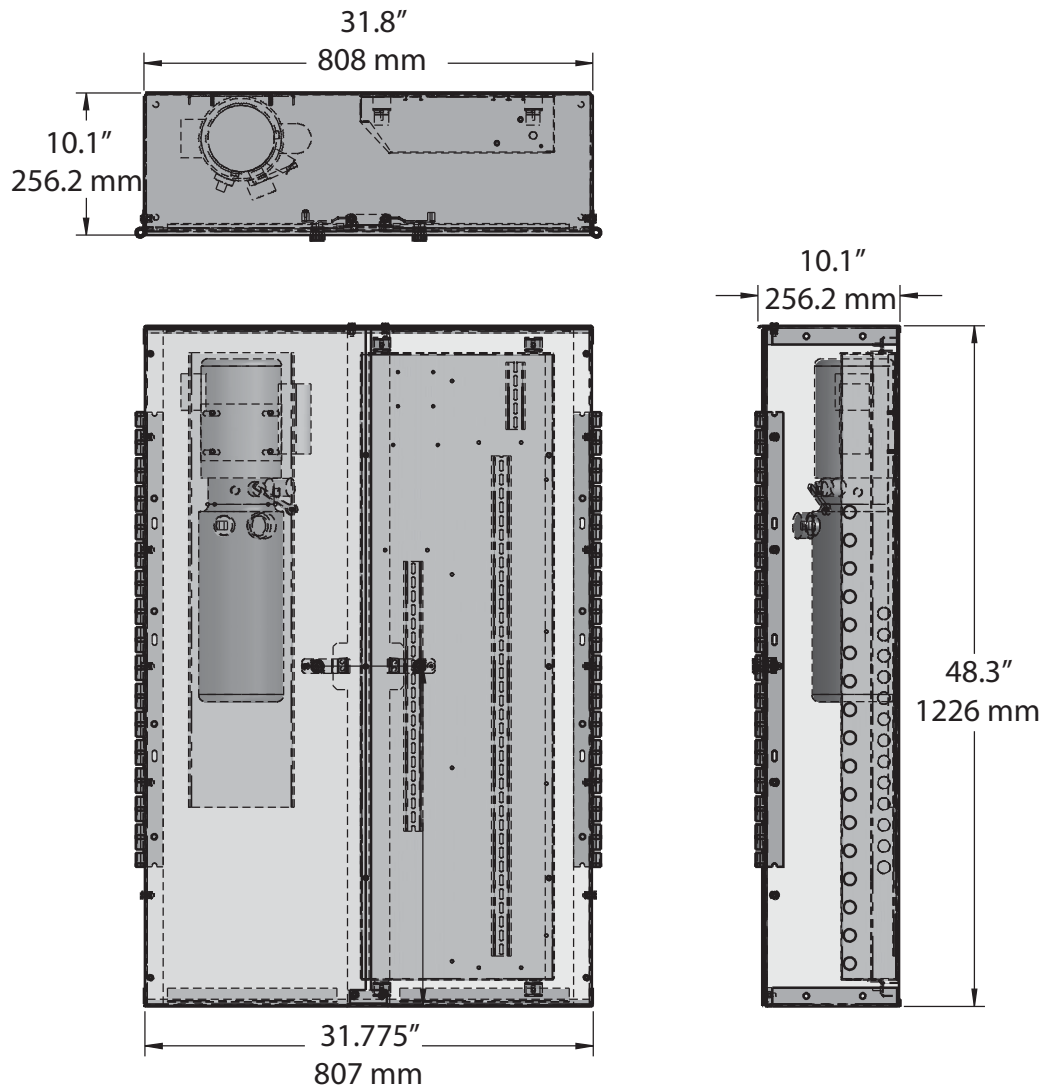


Figure 39: Seat dimensions



NOTE: Maximum seat capacity is 330 lbs (150 kg)

Figure 40: Remote controller/pump box dimensions



PROVISIONS BY OTHERS

GENERAL REQUIREMENTS

Hoistway

The hoistway must be designed and built in accordance with the “safety standard for platform lifts and stairway chairlifts” or the “safety code for elevators and escalators” and all state and local codes.

Plumb Runway

Due to close running clearances, the owner/agent must ensure that the hoistway and the pit (where provided) are level, plumb and square and are in accordance with the dimensions on the installation drawings.

Minimum Overhead Clearance

The owner/agent must ensure the minimum overhead clearance is in compliance with codes.

Construction Site

The owner/agent is required to provide all masonry, carpentry and drywall work as required and shall patch and make good (including finish painting) all areas where walls/floors may need to be cut, drilled or altered in any way to permit the proper installation of the lift.

Dimensions

The contractor/customer is required to verify all dimensions and report any discrepancies to our office immediately.

STRUCTURAL REQUIREMENTS

Floor/Support Wall Loads

The structural engineer is to ensure that the building and shaft will safely support all loads imposed by the lift equipment. Refer to the installation drawings for the loads imposed by the equipment.

Mast to be Securely Fastened

Where required, the mast must be securely fastened to the structural support wall. Refer to the installation drawings for the loads imposed by the equipment.

Where Doors are Required

Suitable lintels must be provided by the owner/agent. Door frames are not designed to support overhead wall loads.

ELECTRICAL REQUIREMENTS

General

Electrical equipment and wiring must comply with Section 38 of CSA C22.1 (Canada) or Section 620 of NEC ANSI NFPA 70 (USA).

Power Supply

A 120 VAC, 20A, 60 Hz, single-phase circuit through a fused disconnect with an auxiliary contact on the main power supply is required.

Lighting

Lighting of 100 lux minimum is required at platforms and landings. Lighting with a switch and electrical GFCI outlet is required in the hoistway pit.

ENTRANCE REQUIREMENTS

Upper Landing Gates

Where required, smooth solid barriers are to be supplied and installed on both sides of the entrance at the upper level and must be a minimum of 42" (1067 mm) high. The entrance assembly must be in place prior to this provision.

Fascia Panel Below Upper Level Entrance

Where required, fascia panel must be fastened to a solid wall and be perpendicular to the floor and walls. Hoistway fascia is not self-supporting for long, continuous runs void of entrances. Adequate support for the fascia must be provided.

Entrance Assemblies

Entrance assemblies must be adjusted to align with the platform and interlock equipment. Others must allow an adequate opening.

Return Walls

Return walls at the entrances must be built-in by others after the entrance assemblies are in place. The entrance assembly must be securely fastened to the walls by the contractor.

V1504

Vertical Platform Lift

PLANNING GUIDE

Part No. 000690
Copyright © 2015

Savaria Corporation
Lifts and Elevators
www.savaria.com

Support
2 Walker Drive
Brampton, Ontario, L6T 5E1, Canada
Toll free: (800) 791-7999
Fax: (905) 791-2222

