



Data Sheet



VELTIA® an innovative hand dryer that operates without heating element. Operates automatically when putting your hands in the drying chamber and works based on high speed air allowing to dry hands in a very short time leaving on the skin a nice feeling of a massage.

Besides a great effectiveness, **VELTIA®** includes a bad scents elimination system thanks to **ZEROSMELL®** (sold separately).

VELTIA® is ideal for washrooms with medium and high number of users per day.

Patent Number: **WO / 2006 / 042896**

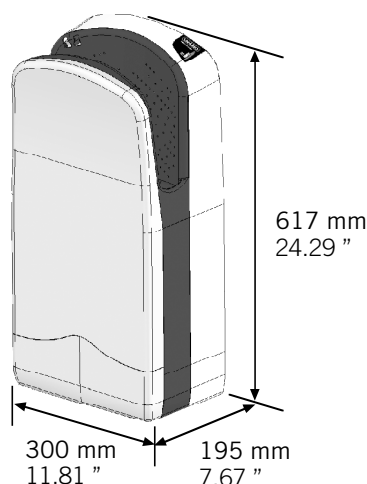
TECHNICAL, ENVIRONMENTAL AND MECHANICAL SPECIFICATIONS

MODEL:	240V	120V
Voltage	220/230/240V~	110/120V~
Frequency	50/60 Hz	50/60 Hz
Power consumption	1.760 W	1.749 W
Current (Running)	8.0A @ 230Vac	15.9A @ 120Vac
Electrical Isolation	Class II*	Class II*
Air Speed	200 Km/h (125 Mph)	200 Km/h (125 Mph)
Drying Time	10-15 s	10-15 s
Dimensions	300 x 195 x 617 (mm)	300 x 195 x 617 (mm)
	11.81x7.67x24.29 (inches)	11.81x7.67x24.29 (inches)
Weight	9.55 Kg (21.1 Lb)	9.55 Kg (21.1 Lb)
IP Code	IP33	IP33
Noise (@ 2 mt)	70 dB	70 dB
Number of Motors	2	2
Motors Speed	30.000 rpm	30.000 rpm
Motors Driving System	Soft Starting	Soft Starting
Hands Detection System	IR - Barrier	IR - Barrier

MATERIALS

Housing case and water tank made of High impact 2.6mm thick ABS with antibacterial protection in drying area
All plastic pieces are properly prepared for recycling
Internal parts are contained by fire retardant plastic rated 5VA according to directive UL94
VELTIA complies with ROHS directive

DIMENSIONS



CERTIFICATIONS

Europeans Directives:

Other Certifications
D89/336/CEE y D92/31/CEE;
D73/23/CEE y D93/68/CEE;
D98/37/CEE;
D92/59/CEE y D2001/95/CEE

Other Certifications:

ANCE NOM, SABS, UL

Product information subject to changes without further notice

Rev.:1.1

Oct 2.008

VELTEK SYSTEMS S.L.

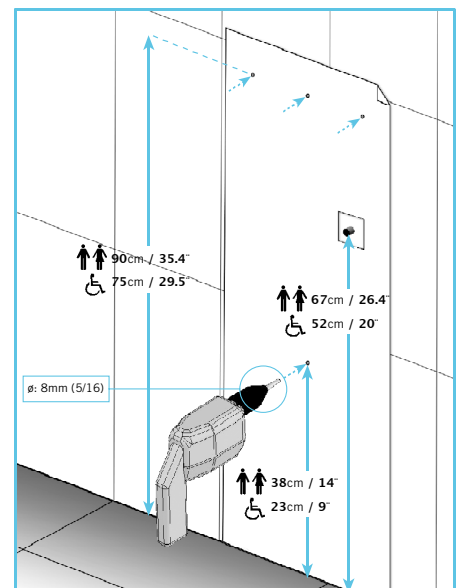
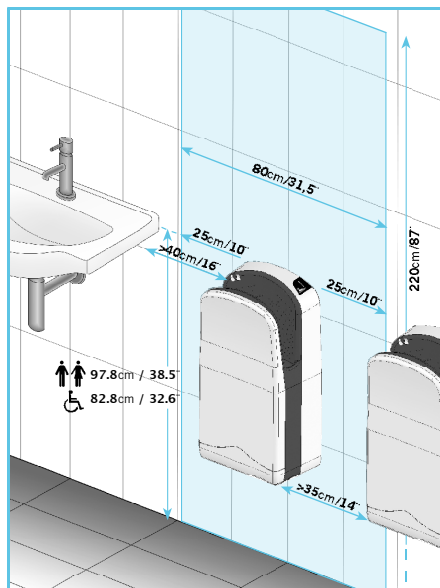
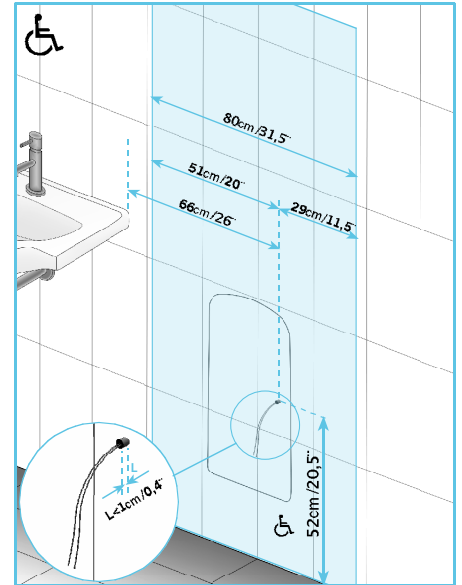
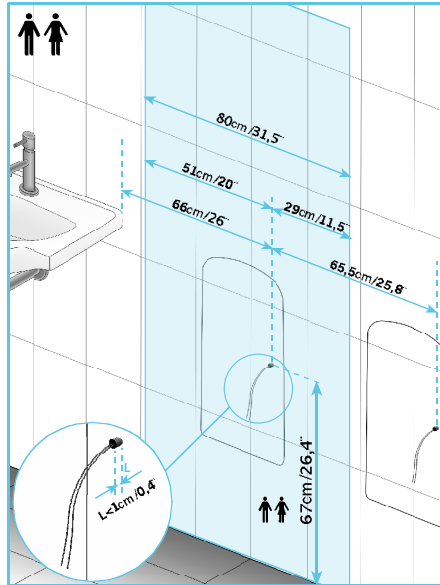
1/2



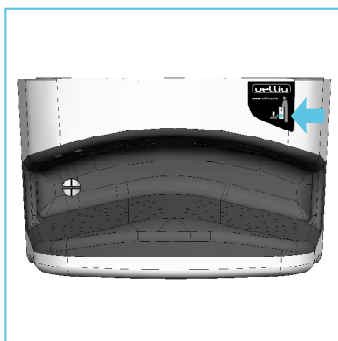
Data Sheet



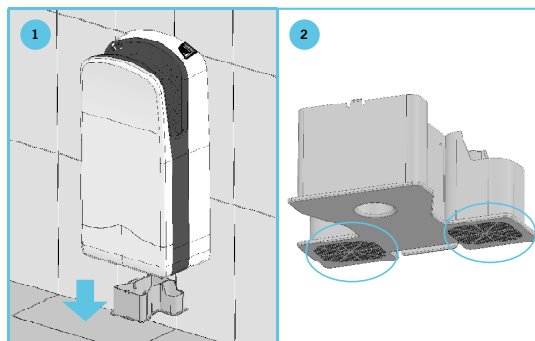
RECOMENDED HEIGHTS FOR INSTALLATION



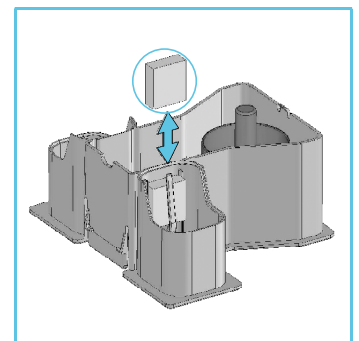
MAINTENANCE



Warning: Water tank full; must be emptied.



Air Filters: To be checked often and cleaned if necessary.



ZeroSmell®: Must be changed every 3 months.



Product information subject to changes without further notice

Rev.:1.1

Oct 2.008

VELTEK SYSTEMS S.L.

2/2

Sensor Activated Clean Dry® Hand Dryer

FEATURES

- Hygienic sensor-activated hand dryer
- Double-sided blowers for faster dry time
- Sleek and compact design
- 208 mph of air speed
- Side panels and water tray to prevent water from trickling to the floor
- Low operating noise - 57dB(A)
- Energy efficient

COLORS/FINISHES

- #WH White

CODES/STANDARDS

- Meets or exceeds ANSI/UL 507, 9th edition, Rev. June 18th 2012 and CSA C22.2 No. 113-12 Oct 2012.
- Certifications: Intertek/ETL



PRODUCT SPECIFICATION

TOTO Model No. HDR120#WH shall be a sensor activated hand dryer. Product shall have double-sided blowers with 208mph of air speed. Product shall have the decibel rating of 57dB(A) and power rating of 690 W.



HDR120#WH

Sensor Activated Clean Dry® Hand Dryer

SPECIFICATIONS

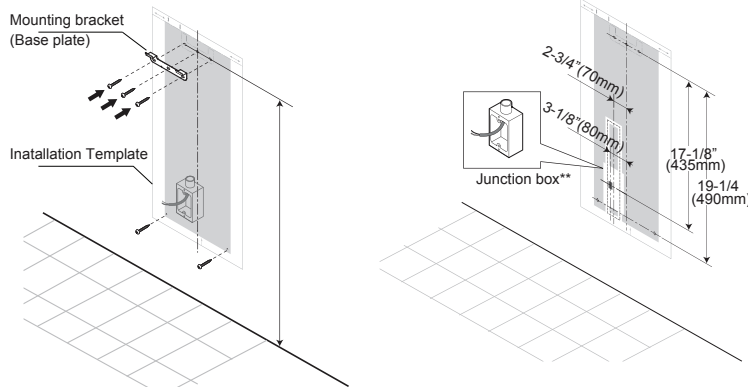
- Warranty One Year Warranty
- Power Connection Hardwired
- Power Rating 120V AC, 5.75 Amps, 60 Hz, 690 W
- Power Saving Function Automatically turns OFF when hands are removed or after 30 seconds of use
- Air Speed 208mph
- Water Tray Capacity 0.25gal (950ml)
- Unit Size 11 13/16" x 7 3/8" x 21 5/8"
- Unit Weight 16.1lb (7.3kg)
- Operating Temperature 32°-104°F (0°-40°C)
- Shipping Size 25-5/8" x 14-31/32" x 10-15/16" (650mm x 380mm x 277mm)
- Shipping Weight 21.4lb (9.7kg)

These dimensions and specifications are subject to change without notice.

INSTALLATION NOTES

For ADA installation, refer to codes. See the template for locating the installation of the mounting bracket.

ROUGH-IN

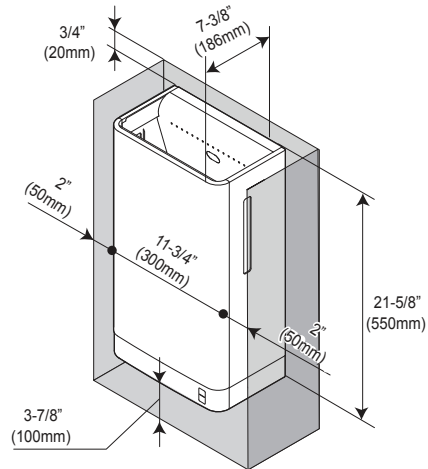


Recommended mounting bracket heights from floor are as follows:

General users: 35" [890mm]
 Children: 26-1/8" [665mm]
 ADA: 34" [865] **

**For ADA installation, refer to codes.

**Does not include junction box



***Clearance is required in order to take the water tray side covers for cleaning and maintenance.

FEATURES

- High speed hand dryer
- Hygienic, touch-free operation
- Splash resistant
- Water tray to prevent slip and fall
- Space saving, compact design
- Low Operating noise 57dB(A)
- Energy Efficient 390W
- AC powered

COLORS/FINISHES

- #WH White

CODES/STANDARDS

- Meets or exceeds ANSI/UL 507, 9th edition, Rev. June 18th 2012 and CSA C22.2 No. 113-12 Oct 2012.
- Certifications: Intertek/ETL
- Code Compliance: NEC, CEC



PRODUCT SPECIFICATION

TOTO Model No. HDR101#WH shall be a high speed hand dryer. The product shall provide hygienic, touch-free operation. The product shall have water tray to prevent wet floor. The product shall have operating noise of 57dB(A) or less. The product shall be AC powered and consume 390 W or less.



HDR101#WH

Clean Dry® High Speed Hand Dryer

SPECIFICATIONS

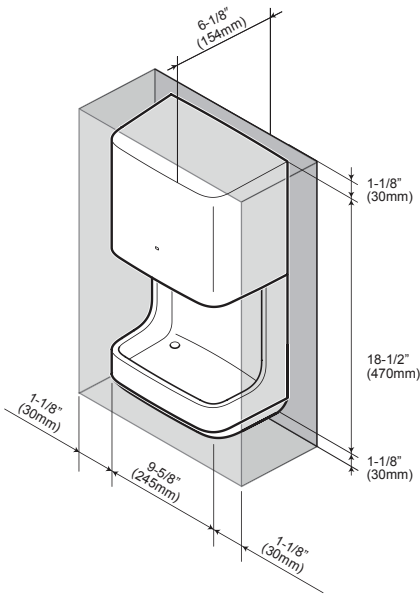
- Warranty One Year Warranty
- Power Connection Hardwired
- Power Rating 120V AC, 3.3Amps, 60 Hz, 390 W
- Power Saving Function Automatically turns OFF when hands are removed or after 60 seconds of use
- Air Speed 220 mph
- Water Tray Capacity 0.15 gal (600 ml)
- Unit Size 9-5/8" x 6-1/8" x 18-1/2"
(245mm x 154mm x 470mm)
- Unit Weight 7.9 lb (3.6 kg)
- Operating Temperature 32F°-113F° (0C°-45C°)
- Shipping Size 20-3/8" x 11-3/8" x 7-1/2"
(518mm x 289mm x 190mm)
- Shipping Weight 10.6lb (4.8kg)

These dimensions and specifications are subject to change without notice.

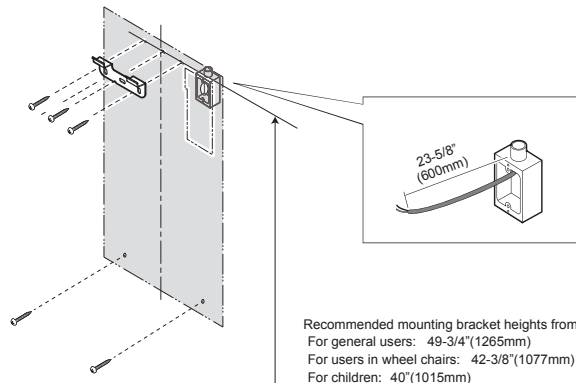
INSTALLATION NOTES

Check local code requirements for additional mounting height details.

ROUGH-IN



For installation/uninstallation and proper functioning of front cover and water tray, keep some empty space around the product. There should be no obstructions within 30 mm from either side, 30 mm from the bottom, or 30 mm from the top of the product.



Recommended mounting bracket heights from floor are as follow
 For general users: 49-3/4"(1265mm)
 For users in wheel chairs: 42-3/8"(1077mm)
 For children: 40"(1015mm)



Meets the American Disabilities Act Guidelines, ANSI A117.1 and CSA B651 requirements when mounted in a recessed wall where the front surface is not more than 4" (102mm) from finished wall and mounting height for U.S. is 48" (1219mm) max to blower outlet from floor, and for Canada is 47-1/4" (1200mm) max to blower outlet from floor. Check local code requirements for additional mounting height details.

TOTO®

These dimensions and specifications are subject to change without notice

Clean Dry® High Speed Hand Dryer

FEATURES

- High speed hand dryer
- Hygienic, touch-free operation
- Splash resistant
- Space saving, in-wall design
- Vandal proof water tray
- Low Operating noise 56dB(A)
- Energy Efficient 390W
- AC powered
- Stainless Steel Cover
- Flush mount
- ADA compliant

COLORS/FINISHES

- #SS Stainless Steel Finish

CODES/STANDARDS

- Meets or exceeds ANSI/UL 507, 9th edition, Rev. June 18th 2012 and CSA C22.2 No. 113-12 Oct 2012.
- Certifications: Intertek/ETL
- Code Compliance: NEC, CEC
- ADA compliant



PRODUCT SPECIFICATION

TOTO Model No. HDR111#SS shall be a high speed hand dryer. The product shall provide hygienic, touch-free operation. The product shall have vandal proof water tray to prevent wet floor. The product shall have operating noise of 56dB(A) or less. The product shall be AC powered and consume 390 W or less. The product shall have stainless steel cover. The product shall allow for flush mount and be ADA compliant.



HDR111#SS

Clean Dry® High Speed Hand Dryer

SPECIFICATIONS

- Warranty One Year Warranty
- Power Connection Hardwired
- Power Rating 120V AC, 3.3Amps, 60 Hz, 390 W
- Power Saving Function Automatically turns OFF when hands are removed or after 60 seconds of use
- Air Speed 221 mph
- Water Tray Capacity 0.22 gal (850 ml)
- Unit Size 12-5/8" x 6-1/2" x 22-5/8"
(320mm x 164mm x 575mm)
- Unit Weight 16.7 lb (7.6 kg)
- Operating Temperature 32F°-113F° (0C°-45C°)
- Shipping Size 27-1/8" x 15-3/4" x 8-13/16"
(690mm x 398mm x 223mm)
- Shipping Weight 22.7lb (10.3kg)

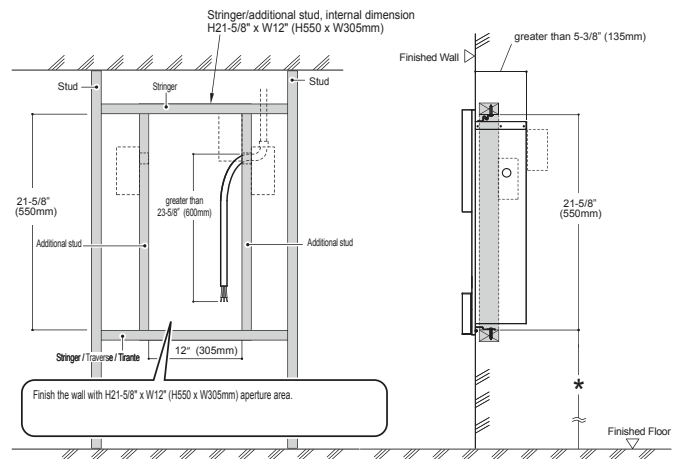
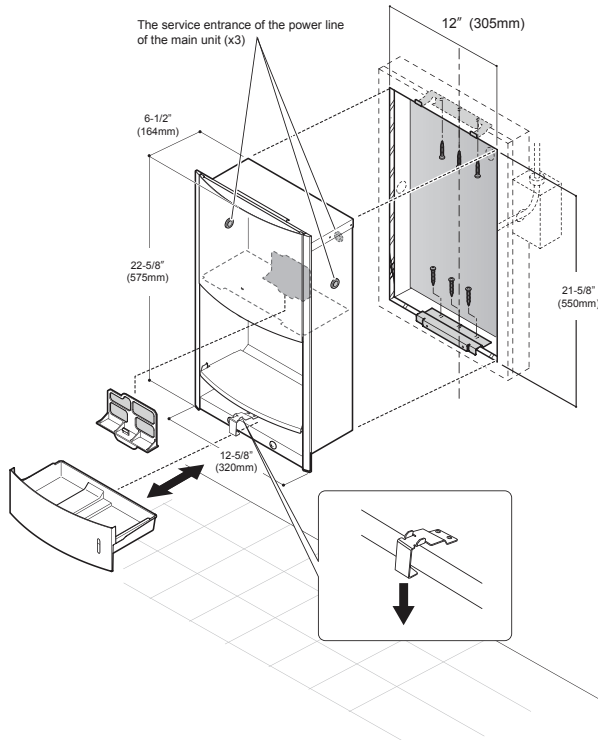
These dimensions and specifications are subject to change without notice.

INSTALLATION NOTES

Meets the American Disabilities Act Guidelines, ANSI A117.1 and CSA B651 requirements when mounted in a recessed wall where the front surface is not more than 4" (102mm) from finished wall and mounting height for U.S. is 48" (1219mm) max to blower outlet from finished floor, and for Canada is 47-1/4" (1200mm) max to blower outlet from finished floor.

Check local code requirements for additional mounting height details.

ROUGH-IN



- * Recommended mounting bracket (lower) heights from floor are as follow:
For general users: 31-1/4" (795mm)
For users in wheel chairs: 23-7/8" (607mm)
For children: 21-1/2" (545mm)

Meets the American Disabilities Act Guidelines, ANSI A117.1 and CSA B651 requirements when mounting height for U.S. is 48" (1219mm) max to blower outlet from floor, and for Canada is 47-1/4" (1200mm) max to blower outlet from floor. Check local code requirements for additional mounting height details.

Clean Dry® High Speed Hand Dryer

FEATURES

- High speed hand dryer
- Hygienic, touch-free operation
- Durable aluminium construction
- Low Operating noise 55dB(A)
- Energy Efficient 390W
- AC powered

COLORS/FINISHES

- #SV Silver

CODES/STANDARDS

- Meets or exceeds ANSI/UL 507, 9th edition, Rev. June 18th 2012 and CSA C22.2 No. 113-12 Oct 2012.
- Certifications: Intertek/ETL
- Code Compliance: NEC, CEC



PRODUCT SPECIFICATION

TOTO Model No. HDR130#SV shall be a high speed hand dryer. The product shall provide hygienic, touch-free operation. The product shall have operating noise of 55dB(A) or less. The product shall be AC powered and consume 390 W or less.



HDR130#SV

Clean Dry® High Speed Hand Dryer

SPECIFICATIONS

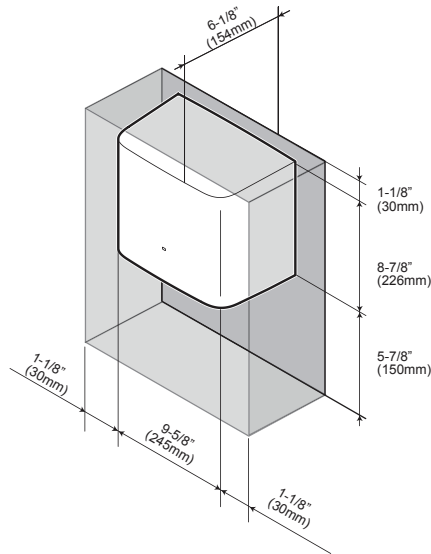
- Warranty One Year Warranty
- Power Connection Hardwired
- Power Rating 120V AC, 3.3Amps, 60 Hz, 390 W
- Power Saving Function Automatically turns OFF when hands are removed or after 30 seconds of use
- Air Speed 221 mph
- Unit Size 9-5/8" x 6-1/8" x 9"
(245mm x 154mm x 230mm)
- Unit Weight 8.2 lb (3.7 kg)
- Operating Temperature 32F°-113F° (0C°-45C°)
- Shipping Size 11-3/8" x 11-3/8" x 7-1/2"
(290mm x 289mm x 190mm)
- Shipping Weight 10.6lb (4.8kg)

These dimensions and specifications are subject to change without notice.

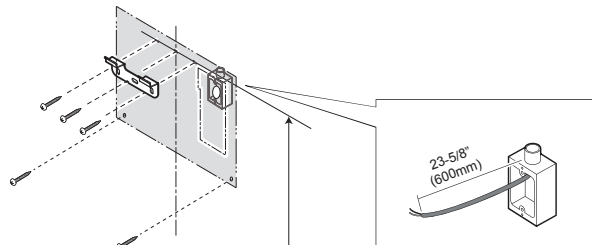
INSTALLATION NOTES

Check local code requirements for additional mounting height details.

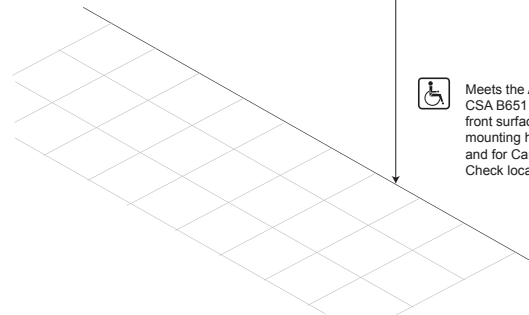
ROUGH-IN



Keep some empty space around the product. There should be no obstructions within 30 mm from each side, 150 mm from the bottom, 30 mm from the top.



Recommended mounting bracket heights from floor are as follow
 For general users: 49-3/4" (1265mm)
 For users in wheel chairs: 42-3/8" (1077mm)
 For children: 40" (1015mm)



Meets the American Disabilities Act Guidelines, ANSI A117.1 and CSA B651 requirements when mounted in a recessed wall where the front surface is not more than 4" (102mm) from finished wall and mounting height for U.S. is 48" (1219mm) max to blower outlet from floor, and for Canada is 47-1/4" (1200mm) max to blower outlet from floor. Check local code requirements for additional mounting height details.

TOTO®

These dimensions and specifications are subject to change without notice