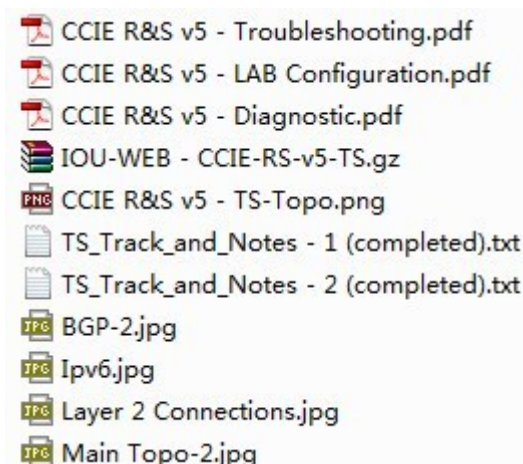


- **Vendor: Cisco**
- **Exam Code: 400-101 Lab**
- **Exam Name: CCIE Routing & Switching Lab**
- **Dumps Collection**

[Click To Visit PassLeader and Download Full Version 400-101 Lab Exam Dumps](#)

- ★ **PassLeader Provide Real CCIE 400-101 Lab with Questions and Solutions!**
 - ★ **Accuracy of CCIE 400-101 Lab Workbooks Are Over 99% Correct!**
 - ★ **99%+ of Our Customers Pass the 400-101 Lab Exam on the First Try!**
 - ★ **PassLeader Offer One Year Free Update of the 400-101 Lab Exam!**

[PassLeader 400-101 Lab Dumps Contain the Following Necessary Study Materials for 100% Passing the 400-101 Lab Exam!](#)



NOTE: The Lab Manual is a Joint Fruit of PassLeader. If You Have Any Questions or Want to Exchange Exam Experience, Welcome to Visit Our Official Website -- <http://www.passleader.com/>

CCIE Routing & Switching Lab Configuration Section

- This section is comprised of set of configuration tasks to be completed within 5 hours.
- The final score of this section is combined with the troubleshooting section to comprise your final pass or fail status on the Lab exam.
 - A candidate is required to pass both sections of Cisco CCIE certification.

1. Read all questions in each section before proceeding with any configuration.
2. Before starting the exam, confirm that all devices in your rack are in working order. During the exam, if any device is locked or inaccessible for any reason you must recover it. When you complete the exam ensure that all devices are accessible to the grading proctor. A device that is not accessible for grading cannot be marked and may cause you to lose substantial point.
3. Knowledge of implementation and troubleshooting techniques is part of skills tested in the configuration section of the Lab exam.
4. If you suspect that there may be hardware problem with your equipment contact the Lab proctor immediately.
5. Points are awarded for working configuration only. Test the functionality of all of the requirements before you complete your exam. As you configure one part of the exam you may break a previous requirement or configuration.
6. No partial points can be granted for any question. All requirements needed to be full fill in order to receive the points for the question some requirements depend on other questions either before or after the current question.
7. You will be presented with reconfiguration Routers and Switches. Do not change the following configuration on the device.

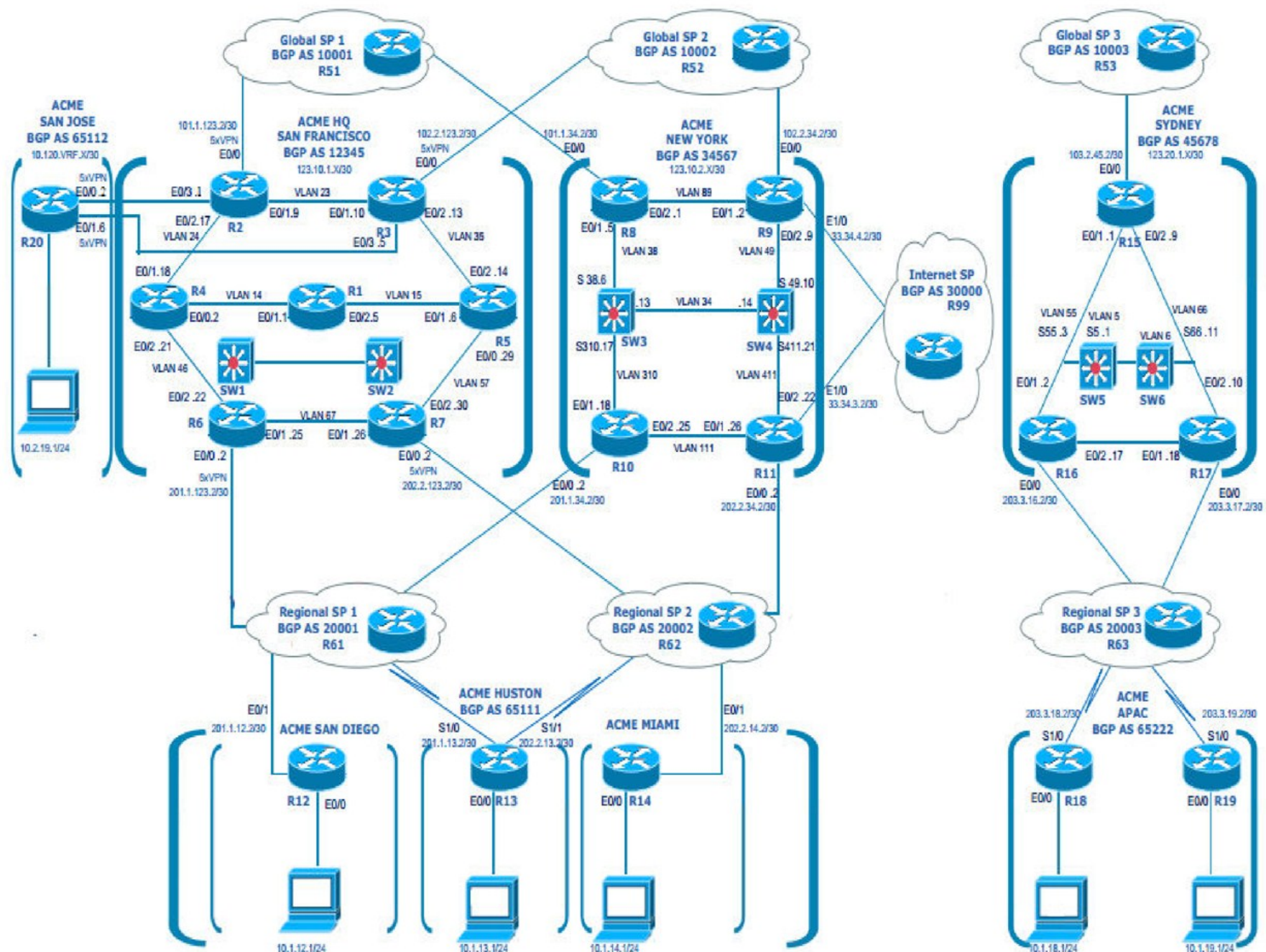
Hostname

Enable password "cisco"

Console line configuration

8. In any configuration where additional addressing may be necessary. Use only the major network as displayed in diagram 1. Ensure that it does not conflict with a network that is already used in your network.
9. Unicast or multicast static and default routes are not permitted unless permission to use them is directly stated in a specific question. This restricted includes floating static routes and those routes that were generated by a routing protocol routes to null 0 that are generated as a result of a dynamic routing protocol solution are permitted.
10. Save your configuration frequently.

Topology:



Section 1. Layer 2 Technologies

Section 1.1 Switch Administration

Configure the ACME Headquarters network (AS 12345) & New York Office (34567) as the following requirements:

1. The VTP domain must be set to CCIE
2. Use VTP version 2

3. SW1 must be the VTP server and SW2 must be the VTP client
4. Secure all VTP updates with an MD5 digest of the ASCII string "CCIErocks\$"
5. SW3 & SW4 must not advertise their VLAN configuration but must forward VTP advertisement that they receive out on their trunk ports
6. In order to avoid as much as possible unknown unicast flooding in all VLANs, the administrator requires that any dynamic entries learned by other SW1 and SW2 must be retained for 2 hours before being refreshed

Solution:

SW1 ---- Configuration

SW1(config)#vtp version 2

SW1(config)#vtp domain CCIE

SW1(config)#vtp password CCIErock\$ (CCIErock\$ is without quotes)

SW1(config)#vtp mode server

SW1(config)#mac address-table aging-time 7200 (7200 seconds = 2 hours)

SW2 ---- Configuration

SW2(config)#vtp version 2

SW2(config)#vtp domain CCIE

SW2(config)#vtp password CCIErock\$ (CCIErock\$ is without quotes)

SW2(config)#vtp mode client

SW2(config)#mac address-table aging-time 7200 (7200 seconds = 2 hours)

SW3 ---- Configuration

SW3(config)#vtp version 2

SW3(config)#vtp domain CCIE

SW3(config)#vtp password CCIErock\$ (CCIErock\$ is without quotes)

SW3(config)#vtp mode transparent

SW4 ---- Configuration

SW4(config)#vtp version 2

SW4(config)#vtp domain CCIE

SW4(config)#vtp password CCIErock\$ (CCIErock\$ is without quotes)

SW4(config)#vtp mode transparent

Verification:

On SW1

```
SW1#sh vtp st
SW1#sh vtp status
VTP Version capable      : 1 to 3
VTP version running      : 2
VTP Domain Name          : CCIE
VTP Pruning Mode         : Disabled
VTP Traps Generation     : Disabled
Device ID                : aabb.cc00.1f00
Configuration last modified by 0.0.0.0 at 1-17-15 17:10:35
Local updater ID is 0.0.0.0 (no valid interface found)

Feature VLAN:
-----
VTP Operating Mode       : Server
Maximum VLANs supported locally : 1005
Number of existing VLANs : 5
Configuration Revision    : 1
MDS digest               : 0x00 0xB0 0x08 0xFE 0x62 0x75 0x86 0x48
                        : 0xAE 0x05 0x7B 0x87 0x51 0x45 0x7C 0x09

SW1#
SW1#sh vtp password
VTP Password: CCIErock$
SW1#
```

More Lab Configuration Content Please Visit
<http://www.passleader.com/400-101-lab.html>

CCIE Routing & Switching Troubleshooting Section

1. Ticket - L2 Switching

2 Marks

User's that are located in VLAN 100 of the BancoBank Headquarters have lost access to Server1, which is located in VLAN 200. Fix the connection so that the following sequence of commands produces the same relevant output:

PC101#ping server1

Type escape sequence to abort.

Sending 5, 100-byte ICMP Echos to 172.16.200.200, timeout is 2 seconds:

!!!!

Success rate is 100 percent (5/5), round-trip min/avg/max = 1/1/1 ms

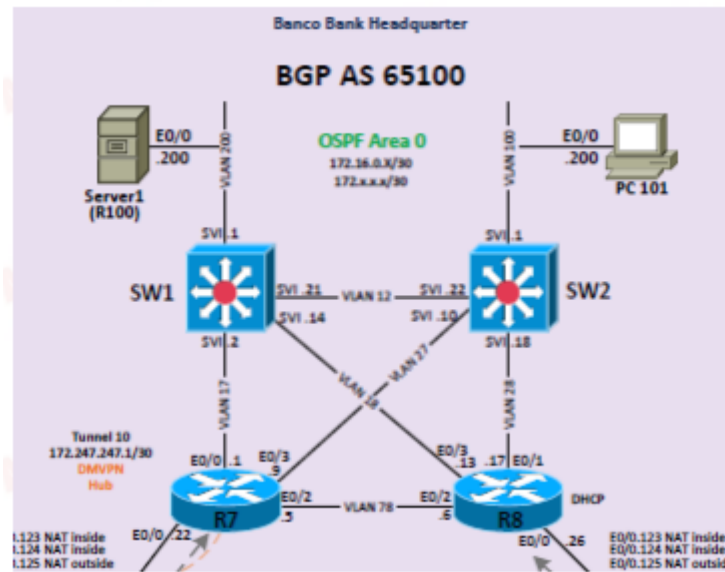
PC101#traceroute server1.bancobank.org

Type escape sequence to abort.

Tracing the route to server1.bancobank.org (172.16.200.200)

VRF info: (vrf in name/id, vrf out name/id)

1	172.16.100.1	0 msec	0 msec	1 msec
2	172.16.0.21	0 msec	0 msec	1 msec
3	server1.bancobank.org (172.16.200.200)	0 msec	*	0 msec



2. Ticket – PPP

2 Marks

Local Service Provider NOC connected to R11 has lost access to R17.

Local service provider Gateways must authenticate their ppp subscribers using chap.

Local service provider Gateways must offer Dynamic IP Addresses to ppp subscribers.

Subscribers must have a default route in their routing table positioning to Local Service Provider.

Subscribers must not use routing protocols to connect with Local Service Provider Gateways.

Fix the solution so the connectivity is possible from R11 to R17 as follows:

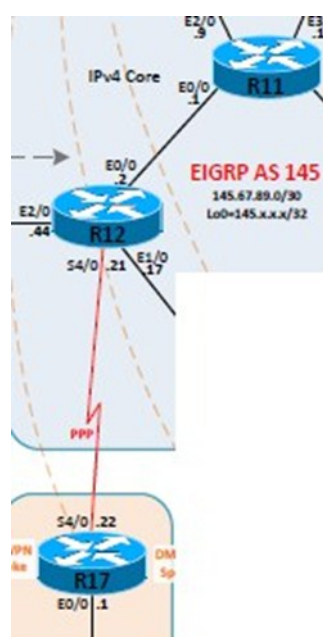
aTS02_R11#telnet 145.67.89.22

Trying 145.67.89.22 ... Open

User Access Verification

Password: cisco

aTS01_R17>



More Troubleshooting Content Please Visit
<http://www.passleader.com/400-101-lab.html>

[Click To Visit PassLeader and Download Full Version 400-101 Lab Exam Dumps](#)