

➤ **Vendor: Microsoft**

➤ **Exam Code: 70-981**

➤ **Exam Name: Recertification for MCSE: Private Cloud**

➤ **Part B**

➤ **Question 201 – End**

[Visit PassLeader and Download Full Version 70-981 Exam Dumps](#)

QUESTION 201

You manage a virtualization environment that contains Windows Server 2012 R2 servers that have the Hyper-V role installed.

You manage the host servers by using Virtual Machine Manager (VMM) in System Center 2012 R2.

You must monitor the virtualization environment, including all virtual machines and service instances.

You need to configure monitoring.

Which three actions should you perform? Each correct answer presents part of the solution.

- A. Import the VMM Management Pack and then deploy agents to the Hyper-V host servers and the VMM server.
On the Hyper-V host server, enable agent proxy for the Operations Manager agent.
- B. In the VMM console, add the name of an Operations Manager server to the management group that will be used to monitor the virtualization infrastructure.
- C. On the VMM server, install the Operations Manager console.
- D. On the Operations Manager management server, enable Windows Remote Management (WinRM).
- E. Import the VMM Management Pack and then deploy agents to Hyper-V host servers and the VMM Server.
On the VMM server, enable agent proxy for the Operations Manager agent.
- F. Configure the VMM server and the Active Directory computer accounts of the Hyper-V host servers to allow constrained delegation.

Answer: BCE

QUESTION 202

A company has a Windows Server 2012 R2 server that has the Hyper-V role installed.

The server hosts 12 virtual machines (VMs) that run Windows Server 2012 R2.

The company plans to deploy System Center 2012 R2 Data Protection Manager (DPM).

The company has identified the following requirements for the DPM deployment:

- Allow files and folders on VMs to be recovered allow recovery of data to a network

- Share minimize the number of DPM protection agents that you must deploy
You need to implement the backup solution.

Which two actions should you perform? Each correct answer presents part of the solution.

- A. Deploy a DPM server.
- B. Deploy the DPM protection agent to VMs.
- C. Add the Hyper-V role to the DPM server.
- D. Configure DPM to perform guest-level backups of the VMs.
- E. Configure DPM to perform host-level backups of the VMs.

Answer: AC

Explanation:

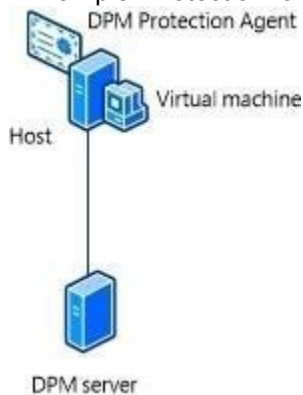
* DPM protection supports the following scenarios:

/ (this scenario) Protects virtual machines that are hosted on stand-alone servers that run Hyper-V and that use local or directly attached storage.

/ Protects virtual machines that run on a cluster. The cluster uses Cluster Shared Volumes (CSV) storage. /Protects virtual machines that run on a stand-alone server or cluster and that use SMB 3.0 file server storage.

/Protects virtual machines that are running during a live migration.

* Example: Protection for virtual machines on a stand-alone server that is running Hyper-V



Hyper-V on Standalone This configuration protects one or more virtual machines on a stand-alone host computer. Storage can be local on the host server, or directly attached to it, for example a hard drive, a storage area network (SAN) device, or a network attached storage (NAS) device. Alternatively, the host server might use SMB 3.0 storage on an alternate file server. The DPM protection agent must be installed on all hosts and on the file server if storage is hosted by using SMB 3.0.

Incorrect: Not B: Would not minimize the number of Protection Agents.

QUESTION 203

Drag and Drop Question

You use System Center 2012 R2 Virtual Machine Manager (VMM) to manage a Hyper-V environment that consists of two host groups named Dev1 and Prod1.

It also has two private clouds named DevCloud and ProdCloud.

You have a self-service user role named DevVMAdmins. DevVMAdmins does NOT have the rights to perform any actions. DevVMAdmins must have the ability to start virtual machines (VMs), stop VMs, and shut down VMs. It must also be able to use resources from other self-service users.

You need to configure the DevVMAdmins user role.

How should you complete the relevant Windows PowerShell command? To answer, drag the appropriate Windows PowerShell segments to the correct locations in the cmdlet. Each Windows PowerShell segment may be used once, more than once, or not at all. You may need to drag the split bar between panes or scroll to view content.

- Set-SCUserRole
- CanReceive
- New-VMMUserRole
- CanShare
- Author

```
-UserRole $UserRole
-Name "Dev VM Admins"
-Permission @" , "Shutdown","Start","Stop'
```

Answer:

- Set-SCUserRole
- CanReceive
- New-VMMUserRole
- CanShare
- Author

```
Set-SCUserRole
-UserRole $UserRole
-Name "Dev VM Admins"
-Permission @" CanReceive , "Shutdown","Start","Stop'
```

Case Study 7 - Woodgrove Bank (Question 203 - Question 211)

Exist Environment

Active Directory Environment

The network contains a single Active Directory production forest named woodgrovebank.com. Currently, there is no trust relationship between the Active Directory forests of Woodgrove Bank and Contoso.

Network Environment

Woodgrove Bank has a perimeter network that hosts Internet-facing servers. Woodgrove Bank uses Hyper-V Network Virtualization to isolate its production, development, and test environments. Woodgrove Bank has a Microsoft Azure subscription.

System Center Environment

Woodgrove Bank deploys infrastructure servers that host the following System Center 2012 R2 components:

- Operations Manager
- Data Protection Manager (DPM)
- Virtual Machine Manager (VMM)

Woodgrove Bank plans to deploy Service Provider Foundation, System Center 2012 R2 Orchestrator, and System Center 2012 R2 Service Manager.

All of the internal Hyper-V hosts and the file servers on the Woodgrove Bank network are registered with VMM. VMM and Windows Server Update Services (WSUS) are integrated. Woodgrove Bank has three VMM logical networks intended for clients, management and storage. Each VMM logical network is configured to use a host group of All Hosts.

The Operations Manager agent is deployed to each server.

On-premises Computing and Application Environment

The main office has the servers configured as shown in the following table.

Name	Configuration	Operating system	Domain/ workgroup
Server1	Operations Manager	Windows Server 2012 R2	Woodgrovebank
Server2	<i>Not applicable</i>	Windows Server 2012 R2	Woodgrovebank
Server3	DPM	Windows Server 2012 R2	Woodgrovebank
Server4	VMM	Windows Server 2012 R2	Woodgrovebank
Server5	File server	Windows Server 2012 R2	Woodgrovebank
Server6	iSCSI target	Server Core installation of Windows Server 2012	Woodgrovebank
Server7	Hyper-V host	Windows Server 2012 R2	Woodgrovebank
Server8	Server Application Virtualization (Server App-V) Sequencer	Windows Server 2012 R2	Woodgrovebank
Server9	Application server	Windows Server 2012 R2	Woodgrovebank
Server10	IP Address Management (IPAM)	Windows Server 2012 R2	Woodgrovebank
Server11	A Hyper-V host in the perimeter network	Windows Server 2012 R2	Workgroup
Server12	WSUS	Windows Server 2012 R2	Woodgrovebank
Server13	A Hyper-V node in a cluster named Cluster2	Windows Server 2012 R2	Contoso
Server14	A Hyper-V node in a cluster named Cluster2	Windows Server 2012 R2	Contoso

Server5 and Server6 were added to VMM by using explicit user credentials.

A Windows update named Update1 is part of the baseline assigned to All Hosts.

Server3 is configured to have a 2-TB storage pool. Tapes are used for long term backup.

An application named App2 is installed on Server9. App2 requires complex installation and manual setup.

Requirements

Planned Changes

Woodgrove Bank plans to implement the following changes:

- Deploy Service Manager.
- Integrate Orchestrator and Service Manager.

- Deploy all of the components of Orchestrator.
- Deploy Service Provider Foundation to Server2.
- Replace the tape backups with Microsoft Azure Backup.
- Use a domain account named WOODGROVEBANK\vmuser1 to view and modify the IP address space in IPAM.
- Provide additional SMB storage to Server7 from Server5.
- Provide additional iSCSI storage to Server7 from Server5.

Connectivity Requirements

Woodgrove Bank identifies the following connectivity requirements:

- Minimize the Internet bandwidth used by the backups.
- Create a logical switch that will allow you to restrict host access to the logical networks of the clients only.
- Provide external connectivity to the virtual machine networks that are isolated from the clients by using the Network Virtualization using Generic Routing Encapsulation (NVGRE) gateway.

Application Requirements

Woodgrove Bank identifies the following application requirements:

- Minimize the number of VMM service template versions used to deploy Appl.
- Create Server App-V packages while minimizing the impact on the existing environment.
- Deploy five instances of a multi-tier application named Appl by using a VMM service template. Each instance will have different deployment settings.

Compliance Requirements

Woodgrove Bank identifies the following compliance requirements:

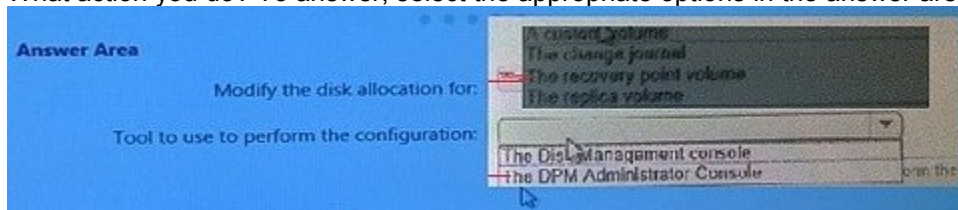
- Use the principle of least privilege, whenever possible.
- Leverage Azure-based services for assessing the on-premises environment.
- Exclude Server7 from the installation of Updatel. The missing patch must not affect the compliance status of Server7 against the baseline assigned to All Hosts.

QUESTION 203

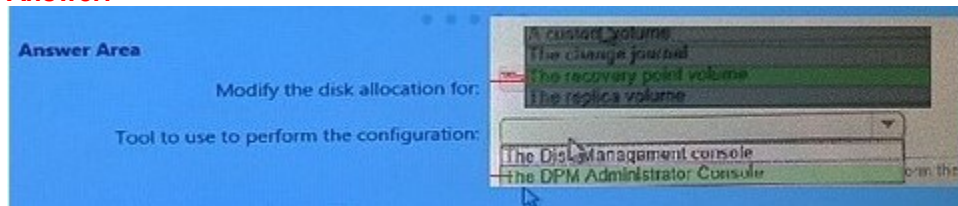
Hotspot Question

You need to minimize the amount of disk space used on Server3.

What action you do? To answer, select the appropriate options in the answer area.



Answer:



QUESTION 204

You need to recommend a solution to assess the current data center environment.

What should you include in the recommendation?

- A. The deployment of Azure Operational Insights in direct agent mode.
- B. The authoring and import of a custom management pack.
- C. The deployment of Azure Operational Insights in Operations Manager attach mode.
- D. The download and installation of Microsoft System Center Advisor (SCA) agents.

Answer: C

QUESTION 205

What should you do first?

- A. On Server6, install th GUI.
- B. On Server4, start the iSCSI Initiator.
- C. On Server6, install th SMI-S provider.
- D. On Server4, install th SMI-S provider.

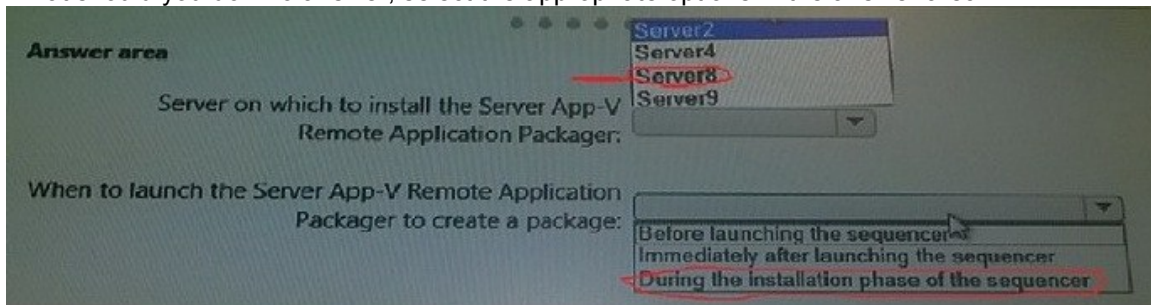
Answer: C

QUESTION 206

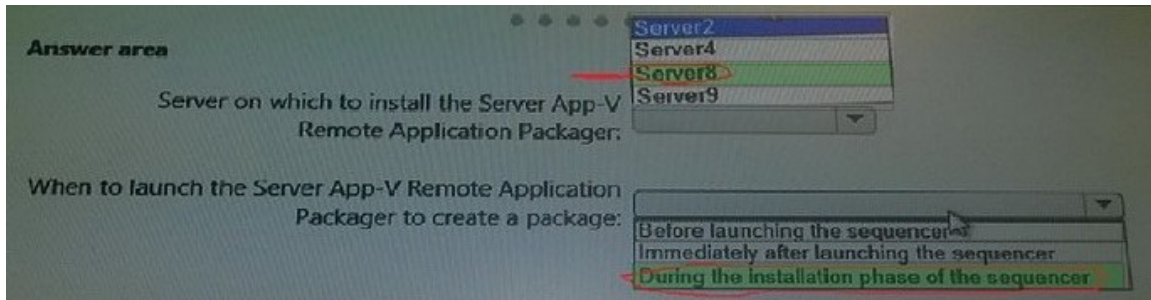
Hotspot Question

You need to create an Application Virtualization (App-V) package for App2.

What should you do? To answer, select the appropriate options in the answer area.



Answer:



QUESTION 207

You need to recommend a solution to deploy App1 to meet the application requirements.

What should you include in the recommendation?

- A. Modify the Application Configuration settings of the App1 service template to include settings enclosed by @.
- B. Configure the custom properties of the App1 service template.
- C. Modify the App1 service template.
- D. Modify the Application Configuration settings of the App1 service template to include settings followed by #.

Answer: B

Explanation:

An application package can contain settings to be entered when you configure the service for deployment.

To format this type of setting, enter the parameter in the Value field, in this format: @<SettingLabel>@. For example, you might prompt for the instance name of a SQL Server for a SQL Server database tier application by using the parameter @SQLServerInstanceName@.

Scenario: Deploy five instances of a multi-tier application named App1 by using a VMM service template.

Each instance will have different deployment settings.

Reference: How to Create an Application Profile in a Service Deployment
<https://technet.microsoft.com/en-us/library/hh427291.aspx>

QUESTION 208

Drag and Drop Question

You need to deploy a virtual machine to provide external connectivity for the virtual machine networks. The solution must meet the connectivity requirements.

Which four actions should you perform in sequence? To answer, move the appropriate actions from the list of actions to the answer area and arrange them in the correct order.

Actions

- Add a network service.
- Create a virtual machine template.
- Import a physical resource.
- Import a template.
- Deploy a service.

Answer Area

- 1
- 2
- 3
- 4

Answer:

Actions

- Deploy a service.

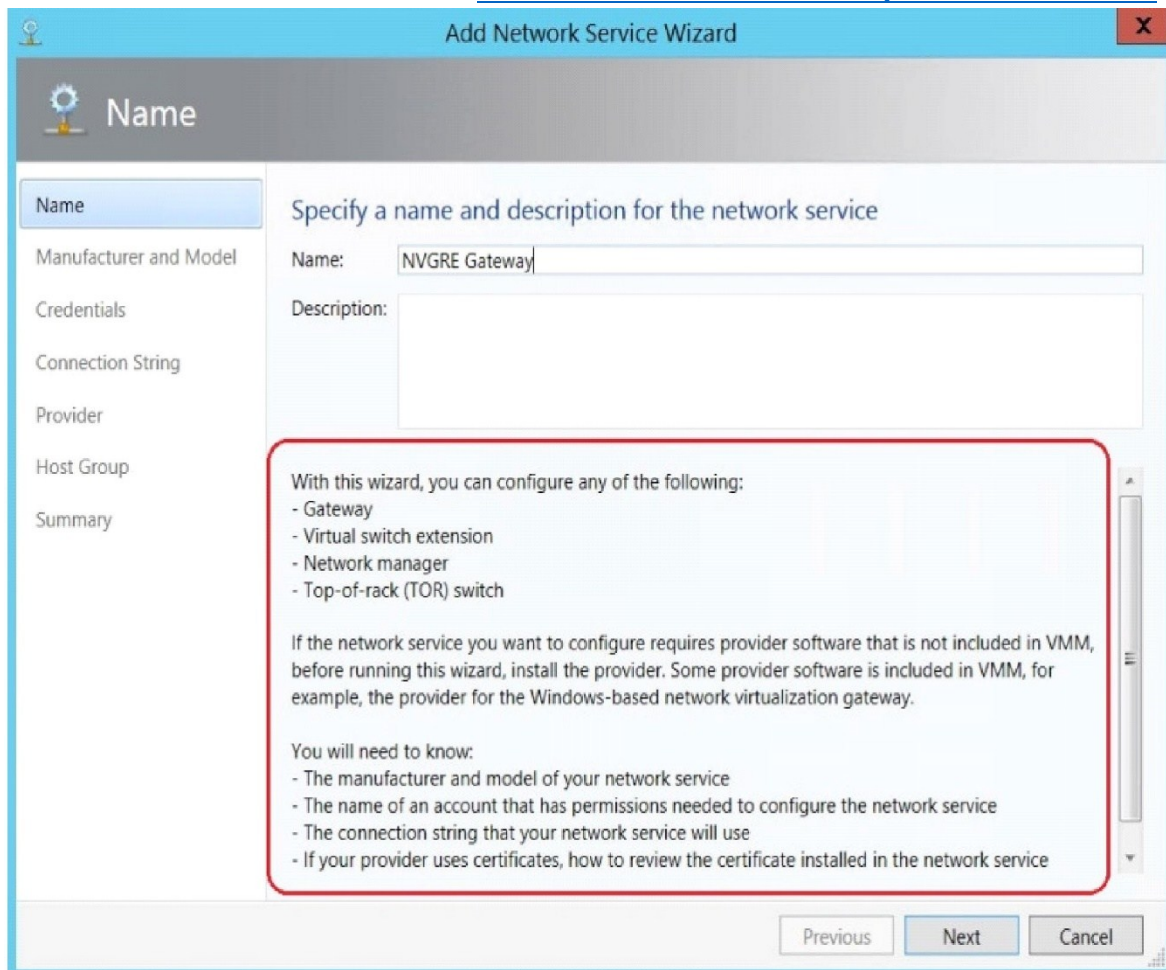
Answer Area

- 1 Import a physical resource.
- 2 Add a network service.
- 3 Import a template.
- 4 Create a virtual machine template.

Explanation:

Create a virtual machine template

(Step 2) You can add a virtual switch extension, such as a NVGRE gateway, by running the Add Network Service Wizard.



(Step 3-4) * After you have created the NVGRE gateway you can create a VMM template that uses the NVGRE gateway.

You can base the new template on an existing VMM template.

* Once you install Client Hyper-V, the first thing that you'll need to do in preparation for creating a virtual machine is create a virtual switch in order for your virtual machines to connect to your network and the Internet. Once you have a virtual switch in place you can create your virtual machines and in the process connect them to your virtual switch.

Scenario: Woodgrove Bank connectivity requirements include:

* Provide external connectivity to the virtual machine networks that are isolated from the clients by using the Network Virtualization using Generic Routing Encapsulation (NVGRE) gateway.

Reference: Making a NVGRE Gateway with System Center 2012 R2 Virtual Machine Manager
<https://mountainss.wordpress.com/2013/12/20/making-a-nvgre-gateway-with-system-center-2012-r2-virtual-machine-manager-scvmm-sysctr/>

QUESTION 209

Hotspot Question

You need to ensure that you can manage Server11 according to the manageability requirements. In the table below, identify which action to perform on each server.

Note: Make only one selection in each column.

Answer Area

Actions	Server4	Server11
Create a host profile.	<input type="radio"/>	<input type="radio"/>
Run the Add Resource Wizard.	<input type="radio"/>	<input type="radio"/>
Use the Import Physical Resource option.	<input type="radio"/>	<input type="radio"/>
Run setup.exe from the VMM installation media.	<input type="radio"/>	<input type="radio"/>

Answer:

Answer Area

Actions	Server4	Server11
Create a host profile.	<input type="radio"/>	<input checked="" type="radio"/>
Run the Add Resource Wizard.	<input type="radio"/>	<input type="radio"/>
Use the Import Physical Resource option.	<input checked="" type="radio"/>	<input type="radio"/>
Run setup.exe from the VMM installation media.	<input type="radio"/>	<input type="radio"/>

Explanation:

The Import Physical Resource command can be used from the VMM Console.

Scenario:

* Server11 is a Hyper-V host, Windows Server 2012 R2, in the perimeter network

* Server4 is a VMM running Windows Server 2012 R2

QUESTION 210

You need to implement VMM IPAM to meet the manageability requirements.

To which two groups should you add WOODGROVEBANK\vmuser1?

- A. Remote Management Users on Server10
- B. IPAM ASM Administrators on Server10
- C. Remote Management Users on Server4
- D. IPAM MSM Administrators on Server10
- E. IPAM Administrators on Server10

Answer: AD

Explanation:

Before you can add an IPAM server to your configuration in VMM, you must perform the following

actions:

1. (this has already been done here) On a server running Windows Server 2012 R2, install the IPAM feature by using Add Roles and Features (in Server Manager) or Windows PowerShell commands. Then configure the IPAM server as described in the relevant IPAM documentation.
2. Create or identify a domain account and, to avoid issues with expiration of the password, ensure that the account is set to never expire. Then, on the IPAM server, ensure that the account has at least the minimum necessary permissions by adding the account to the following two groups:
 - / IPAM ASM Administrators: A local group that exists on all IPAM servers, and provides permissions for IP address space management (ASM).
 - / Remote Management Users: A built-in group that provides access to WMI resources through management protocols, such as WS-Management through the Windows Remote Management service.

Scenario:

* Use a domain account named WOODGROVEBANK\vmuser1 to view and modify the IP address space in IPAM.

* Server4 is a VMM running Windows Server 2012 R2

* Server10 is IP Address Management (IPAM)

Reference: How to Add an IPAM Server in VMM in System Center 2012 R2
<https://technet.microsoft.com/en-us/library/dn249418.aspx>

QUESTION 211

Hotspot Question

You need to design the Orchestrator infrastructure to meet the manageability requirements.

The design must minimize costs.

How many of each component should you include in the design? To answer, select the appropriate options in the answer area.

Management server:	0 <input type="button" value="▲"/>
	1
	2 <input type="button" value="▼"/>
Orchestration console:	0 <input type="button" value="▲"/>
	1
	2 <input type="button" value="▼"/>
Orchestrator database:	0 <input type="button" value="▲"/>
	1
	2 <input type="button" value="▼"/>
Orchestrator web service:	0 <input type="button" value="▲"/>
	1
	2 <input type="button" value="▼"/>
Runbook server:	0 <input type="button" value="▲"/>
	1
	2 <input type="button" value="▼"/>

Answer:

[Visit PassLeader and Download Full Version 70-981 Exam Dumps](#)