



Illinois Eye
AND EAR INFIRMARY

2018



ILLINOIS
EYE
REVIEW

FEB 24-MARCH 2, 2018

80 hours of CME credit !

VENUE

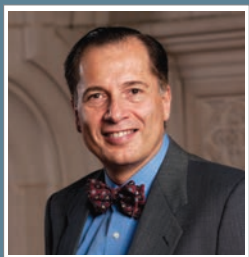
University of Illinois at Chicago
Student Center West
828 S. Wolcott Ave., Chicago, IL

ONLINE REGISTRATION
ILLINOISEYEREVIEW.ORG

**OPHTHALMOLOGY
AND
VISUAL SCIENCES
COLLEGE
OF MEDICINE**



From the Dean...



Dear Colleagues,

I am writing to announce an exciting educational program at our Department of Ophthalmology and Visual Sciences. In its 11th

year, the Illinois Eye Review has steadily grown to become one of the leading review courses nationally and internationally, attracting attendees from all over the world. The course combines the knowledge of experienced clinicians and teachers in the Department of Ophthalmology, with the expertise of leading ophthalmologist educators worldwide.

The Illinois Eye Review arose as an extension of the progressive instructional methods employed by the faculty at the Illinois Eye and Ear Infirmary and Department of Ophthalmology to teach our ophthalmology residents and fellows. In addition, to providing the fundamentals of ophthalmology, the program also offers case discussions and conceptual lectures. The success of the program is underlined by that many of the participants have attended the program regularly and the comments have been highly enthusiastic for the program.

The continued success of the program is assured with the appointment of a stellar Head of the Department of Ophthalmology and Visual Sciences, Dr. Mark Rosenblatt. Dr. Rosenblatt is a highly-accomplished clinician-scientist who has an unwavering commitment to education and has made important contributions to our understanding of corneal nerve regeneration, as well as his establishment of innovative models for investigating corneal nerves.

I hope that you will become familiar with the educational programs throughout the College of Medicine and partake in the CME offerings in ophthalmology, as well as other fields, as we continue to grow.

Dimitri Azar, MD, MBA

Executive Dean, University of Illinois College of Medicine
BA Field Chair of Ophthalmologic Research
Distinguished Professor of Ophthalmology, Pharmacology and Bioengineering
University of Illinois at Chicago

From the Program Directors...

We are pleased to announce the 11th Annual **Illinois Eye Review** on February 24- March 2, 2018. To date, over 1600 residents, fellows and practicing ophthalmologists have attended the program, which offers comprehensive coverage of ophthalmology facts, case presentations, and in depth discussions of advanced concepts. In 2018, the Illinois Eye Review will offer **80 hours of CME** credit. Evaluations of the program have been enthusiastic.

The Illinois Eye Review activity is an intensive program aimed at residents, fellows and practicing physicians. It covers the clinical essentials of each subspecialty in ophthalmology. The Illinois Eye Review offers a new approach to ophthalmology review and continuing education. The course is organized into six days of factual review and one day of concepts in ophthalmology. From Saturday, February 24th through Thursday, March 1st, participants will be introduced to the fundamentals of ophthalmology and will be provided opportunities to review and conceptualize them through case discussions. The last day of the course, Friday March 2, offers a variety of lectures on different concepts in ophthalmology from world renowned faculty. Our approach allows course participants to review facts, test and expand their knowledge through conceptualization, and build on their understanding.

The Illinois Eye Review offers participants the opportunity to immerse themselves in the **basics of ophthalmology** under the tutelage of Illinois Eye and Ear Infirmary physicians, known worldwide for their management of difficult and complicated cases in all major ophthalmologic subspecialties. Equally important, the program offers the opportunity to **discuss cases and learn about important new developments and current concepts** from experts known for their outstanding ability to teach. As you review the list of the Comprehensive Factual Review Faculty and the Concepts Faculty you will recognize the names of numerous leaders in ophthalmology.

We launched the Illinois Eye Review in celebration of the 150th Anniversary of the Illinois Eye and Ear Infirmary, as the best way to honor and also build upon an outstanding tradition of excellence and innovation. Since the beginning, the course has been well-attended and has been successful in offering a **learning opportunity unlike any other in ophthalmology**. Please join us on the University of Illinois at Chicago campus on February 25 through March 2, 2018.

Program Directors



Nathalie Azar, MD
Associate Professor of Clinical Ophthalmology
Director, Pediatric Ophthalmology & Adult Strabismus
Director, Illinois Eye Review



Mark Rosenblatt, MD, PhD, MBA
Professor of Ophthalmology and Head
Illinois Lions/Charles I. Young Chair in Ocular Research



Nalin Kumar, DPhil
Professor of Ophthalmology

Illinois Eye and Ear Infirmary
University of Illinois at Chicago Department of Ophthalmology & Visual Sciences
University of Illinois College of Medicine

Course SCHEDULE February 24 - March 2, 2018

	BASICS		CLINICAL				APPLICATIONS
Starting at:	Saturday FEB 24	Sunday FEB 25	Monday FEB 26	Tuesday FEB 27	Wednesday FEB 28	Thursday MAR 1	Friday MAR 2
6.30 AM	Breakfast	Breakfast	Breakfast	Breakfast	Breakfast	Breakfast	Breakfast
7.00	Registration	LENS FACTUAL 7.00-9.30am	PEDS FACTUAL I 7.00-11.30am	NEURO-OPH FACTUAL I 7.00-11.15am	UVEITIS FACTUAL I 7.00-11.00am UVEITIS FACTUAL II	CORNEA FACTUAL I 7.00am-1.00pm	OCULAR PHYSIOLOGY 7.00-8.45am
7.15	OPTICS I 7.15am-3.45pm						
7.30							
7.45							
8.00							
8.30							
8.45							
9.00		Coffee Break		Coffee Break		Coffee Break	
9.15				Coffee Break		Coffee Break	OCULAR GENETICS 9.00-10.00am
9.30	Coffee Break	Coffee Break			UVEITIS FACTUAL II		
9.45	OPTICS II	OCULAR EMBRYOLOGY AND ANATOMY I 9.45am-1.45pm	PEDS FACTUAL II	NEURO-OPH FACTUAL II	CORNEA FACTUAL II	CORNEA FACTUAL II	ANGIOGENESIS AND GENE THERAPY Concepts & Clinical Applications 10.00-11.45am
10.00							
10.15							
10.30							
10.45							
11.00							
11.15				Lunch Break	UVEITIS CASES 11.00am-12.00pm		
11.30	Lunch Break	Lunch Break	Lunch Break	Lunch Break		Lunch Break	Lunch Break
11.45					Lunch Break		
12.00 PM	OPTICS III	OCULAR EMBRYOLOGY AND ANATOMY II	PEDS CASES 12.00-1.45pm	NEURO OPH CASES 11.45am-1.45pm	CORNEA FACTUAL III	CORNEA FACTUAL III	PEDS Concepts & Clinical Applications 12.15-2.15pm
12.15							
12.30							
12.45							
1.00							
1.15							
1.30							
1.45							
2.00							
2.30							
2.15					RETINA FACTUAL I 12.30-5.45pm	CORNEA CASES 1.00-2.45pm	
2.45		OCULAR PATHOLOGY FACTUAL 1 1.45-4.45pm	ORBIT & PLASTICS FACTUAL I 1.45-5.30pm	GLAUCOMA FACTUAL I 1.45-5.30pm		OCULAR ONCOLOGY FACTUAL I 2.45-7.15pm	RETINA Concepts & Clinical Applications 2.15-4.00pm
3.00							
3.15		Tea Break					
3.30							
3.45	Tea Break		Tea Break	Tea Break	Tea Break	Tea Break	Tea Break
4.00	OPTICS PROBLEMS 4.00-6.30pm	OCULAR PATHOLOGY FACTUAL II	ORBIT & PLASTICS FACTUAL II	GLAUCOMA FACTUAL II	RETINA FACTUAL II	OCULAR ONCOLOGY FACTUAL II	CORNEA Concepts & Clinical Applications 4.15-6.15pm
4.15							
4.30							
4.45							
5.00							
5.15							
5.30							
5.45		OCULAR PATHOLOGY CASES 4.45-7.00pm	OCULOPLASTICS CASES 5.30-7.15pm	GLAUCOMA CASES 5.30-7.15pm	RETINA CASES 5.45-7.30pm		
6.15							
6.30	Dinner Break						
6.45		Dinner Break					
7.00	REFRACTIVE SURGERY 7.00-9.00PM						
7.15							
7.30							
8.15							
8.45							
		ANTERIOR SEGMENT IMAGING 7.30-9.00pm					

CASE DISCUSSIONS AND REVIEW

CLINICAL APPLICATIONS/CONCEPTS



NISHA ACHARYA, MD | University of California at San Francisco Professor of Ophthalmology

Dr. Acharya is the Elizabeth C. Proctor Distinguished Professor of Ophthalmology and Epidemiology at UCSF. She is Director of the Uveitis Service and Associate Director of the Francis I. Proctor Foundation. She graduated from University of California San Francisco School of Medicine in 2000, followed by an ophthalmology residency at MEEI and a fellowship in cornea and uveitis at UCSF. Her clinical expertise is the diagnosis and management of patients with infectious and inflammatory eye diseases. Her research interests include epidemiology of uveitis and epidemiological studies comparing efficacy of various treatments. She has over 120 publications in leading journals including, JAMA Ophthalmology and IOVS.



NORMA ALLEMANN, MD, PHD | UNIFESP Professor of Ophthalmology

Dr. Allemann is Professor of Ophthalmology at UNIFESP, Brazil and an adjunct professor in the Department of Ophthalmology at UIC. She obtained her MD degree from Universidade Federal de Sao Paulo (UNIFESP) and both a Masters and PhD degree from the same institution. Her expertise on ultrasonography, biometry and imaging in ophthalmology has resulted in over 50 scientific articles, 1 book and 23 book chapters. She is the past president of the Brazilian Society of Ophthalmology and is currently Vice-President of the American Society of Ophthalmic Ultrasound. Her area of interest includes propedeutic methods in ophthalmology for anatomic evaluation of ocular structures in different clinical and surgical situations.



WALLACE CHAMON, MD | UNIFESP Professor of Ophthalmology

Dr. Chamon is Professor of Ophthalmology at UNIFESP, Brazil and an adjunct professor in the Department of Ophthalmology at UIC, is an internationally recognized leader in the field of refractive surgery. He obtained his MD degree from Faculdade de Medicina de Ribeirao Preto as well as a Masters, PhD and Free-professorship degree in Medicine from Universidade Federal de Sao Paulo (UNIFESP). He has published 3 books and over 47 book chapters as well as numerous scientific articles. He is a past-president of the Brazilian Laser Ophthalmological Society. In 2007, he received an achievement award from the AAO. He is the Chief Editor of Arquivos Brasileiros de Oftalmologia, a PubMed-indexed Ophthalmology Journal.



ROBERT FOLBERG, MD | Oakland University William Beaumont School of Medicine Dean and Chief Academic Officer

Dr. Folberg is Dean of the Oakland University William Beaumont School of Medicine, Professor of Biomedical Sciences, Pathology and Ophthalmology, and Chief Academic Officer of Beaumont Hospitals. Dr. Folberg received his MD from Temple University College of Medicine in 1975. A respected ocular pathologist and innovator in medical education, he currently teaches eye pathology to Beaumont Hospitals' ophthalmology residents, a distance education program that he conducts using a CD-ROM based curriculum, Web-based instructional tools including virtual microscopy, and biweekly interactive videoconferencing. His distance education program also provides instruction to seven other university medical centers in the United States and support to two institutions abroad.



JASMINE H. FRANCIS, MD | Memorial Sloan-Kettering Cancer Center Assistant Professor of Ophthalmology

Dr. Francis is an Assistant Professor of Ophthalmology at Weill Cornell Medical College. She received her medical degree from New York University School of Medicine and completed an ophthalmology residency at New York Eye and Ear Infirmary where she was awarded the William J. & Judith Turner Outstanding Resident Award. She is an accomplished clinician-scientist having published numerous peer-reviewed papers, book chapters and is the PI for a NCI funded study on The Cancer Genome Atlas for uveal melanoma. Her areas of research interests include retinoblastoma and other intraocular tumors including uveal melanoma and routinely presents at national and international meetings.



DAVID GUYTON, MD | Wilmer Eye Institute at Johns Hopkins Professor and Director of Pediatric Ophthalmology and Adult Strabismus

Dr. Guyton is currently the Director of Pediatric Ophthalmology and Adult Strabismus and serves as the Zanyvl Krieger Professor of Ophthalmology and Director of the Zanyvl Krieger Children's Eye Center at Johns Hopkins. Graduating from Harvard Medical School in 1969, Dr. Guyton subsequently completed his residency in ophthalmology at the Wilmer Eye Institute at Johns Hopkins in 1976. Dr. Guyton received the prestigious Mildred Weisenfeld Award from ARVO in May 2007, as well as the Alcon Research Institute Award, an RPB Senior Scientific Investigator Award, and the RPB Disney Award for Amblyopia Research.



KRISTINA IRSCH, PHD | Wilmer Eye Institute at Johns Hopkins Assistant Professor of Ophthalmology

Dr. Irsch is an Assistant Professor of Ophthalmology at the Krieger Children's Eye Center at the Wilmer Ophthalmological Institute at The Johns Hopkins University School of Medicine. Following completion of her PhD in Physics from the University of Heidelberg in Germany, she completed a post-doctoral research fellowship at Johns Hopkins, before joining the faculty in 2010. Her research interest has focused on ophthalmic instrument development, including development of a pediatric vision screening device to detect lazy eye (which causes decreased vision) in children at a very early and still easily curable stage, as well as on disorders of ocular motility. Dr. Irsch has won several awards throughout her training, including the Young Investigator Award from the Knights Templar Eye Foundation, as well as NASA Tech Briefs magazine's "Create the Future" Design Contest Medical Innovation Award.



LEE JAMPOL, MD | Northwestern University Louis Feinberg MD Professor of Ophthalmology

Dr. Jampol attended Yale College, Yale University School of Medicine and did his ophthalmology training at Yale New Haven Hospital. He did a Fellowship in Retinal Disease with Morton Goldberg at the University of Illinois Eye and Ear Infirmary. Since 1983, he has been Professor and Chairman of the Department of Ophthalmology Feinberg School of Medicine, Northwestern University. Dr. Jampol's clinical practice and research have been largely in the area of vitreoretinal disease. He is specifically interested in inflammatory diseases of the retina, infection of the retina, age-related macula degeneration, and retinal manifestations of systemic diseases. Dr. Jampol has played a major role in supervising clinical trials, particularly in the area of age-related macular degeneration.



KENNETH R. KENYON, MD | Tufts University School of Medicine Clinical Professor of Ophthalmology

Dr. Kenyon is Clinical Professor of Ophthalmology, Tufts University School of Medicine. He graduated from the Johns Hopkins University School of Medicine, Dr. Kenyon completed residency and chief residency in ophthalmology at The Wilmer Eye Institute at Johns Hopkins and a Cornea Fellowship at MEEI. Dr. Kenyon has been a speaker, invited speaker or guest lecturer at over 1,000 courses and seminars. He is internationally known for his work on corneal inflammation and ulceration in vitamin A deficiency as well as his research on diseases of the ocular surface and ocular surface epithelial transplantation. He has authored over 400 publications, including a definitive text on ocular trauma. He has received the Senior Honor Award of the American Academy of Ophthalmology.



GARY J. LELLI, JR., MD | Weill Cornell Medical College Associate Professor and Vice Chair of Ophthalmology

Dr. Lelli is an Associate Professor of Ophthalmology at Weill Cornell Medical College. He serves as the Director of Ophthalmic Plastic, Reconstructive and Orbital Surgery and is the Chair of Quality and Patient Safety for the Department of Ophthalmology. Dr. Lelli received his medical degree from Mount Sinai School of Medicine and completed an Ophthalmology residency at the University of Michigan Hospitals and Health Centers. Dr. Lelli is a dedicated educator. While at the University of Michigan, he was twice awarded the Walker R. Parker Resident Teaching Award. He has written numerous papers and textbook chapters and routinely presents at national meetings. He lives in Westchester, New York with his wife, Kelly and four children – Michael, Grace, Nora and Emily.



ROBERT LINSENMEIER, PHD | Northwestern University Professor of Biomedical Engineering, Neurobiology and Ophthalmology

Dr. Linsenmeier is Professor of Biomedical Engineering, Neurobiology, and Ophthalmology at Northwestern University. He received his PhD degree in Biomedical Engineering from Northwestern University. He is a Fellow of ARVO, Biomedical Engineering Society and the American Institute of Medical and Biological Engineering. He is the Editor in Chief, Current Eye Research. His research interests are on the microenvironment of the mammalian retina, including oxygen and pH regulation, in health and disease and he has over 120 peer-reviewed publications.



CRAIG MCKEOWN, MD | Bascom Palmer Eye Institute Professor of Clinical Ophthalmology

Dr. McKeown is Professor of Clinical Ophthalmology specializing in Pediatric Ophthalmology and Adult Strabismus. He earned a BS and MD from Northwestern University and completed a residency in ophthalmology at Walter Reed Army Medical Center. He also completed fellowships in Pediatric Ophthalmology and Strabismus at Children's Hospital National Medical Center, George Washington School of Medicine, and in Pediatric Ophthalmology and Ophthalmic Genetics at Wilmer Eye Institute, Johns Hopkins University School of Medicine. Dr. McKeown conducts research on pediatric disorders of the eye and has published widely on this subject. He has been the recipient of numerous academic and military awards/honors.



HEATHER E. MOSS, MD, PHD | Stanford University Assistant Professor of Ophthalmology

Dr. Moss is Assistant Professor of Ophthalmology at Stanford University, Harvard Medical School. She earned her MD and PhD from Harvard University and completed her neurology residency and neuro-ophthalmology fellowship at the University of Pennsylvania. Her clinical interests include papilledema, pseudotumor cerebrii and idiopathic intracranial hypertension (IIH). Her research interests include developing non-invasive structural and functional markers of papilledema physiology that predict visual outcomes in IIH and guide clinical management. She is the Chair of the abstract committee for NANOS and Vice chair, neuro-ophthalmology & neuro-otology section of the American Academy of Neurology. Dr. Moss has received a number of awards and honors including Young Investigator of the Year from NANOS and the Sybil Harrington Special Scholar Award from Research to Prevent Blindness.



NANCY NEWMAN, MD | Emory University Leo Delle Jolley Professor of Ophthalmology, Director of Neuro-Ophthalmology

Dr. Newman is the Leo Delle Jolley Professor of Ophthalmology, Professor of Ophthalmology and Neurology and Instructor in Neurological Surgery at the Emory University School of Medicine, where she serves as the Director of Neuro-Ophthalmology. She also holds the academic position of Lecturer in Ophthalmology at the Harvard Medical School. She attended Princeton University, the University of London on a Marshall Scholarship, and Harvard Medical School. Dr. Newman is a Fellow of the American Academy of Neurology and of the North American Neuro-Ophthalmology Society. She has over 250 publications, including scientific articles, book chapters, and books, including the primary textbook in neuro-ophthalmology, Walsh & Hoyt's Clinical Neuro-Ophthalmology, 5th and 6th Editions.



VICTOR PEREZ, MD | Duke University Professor of Ophthalmology, Director Ocular Immunology Center and Ocular Surface Program

Victor Perez, MD is a Professor of Ophthalmology at Duke University. He is the Director of Duke Eye Center's Ocular Immunology Center and Director of the Ocular Surface Program. He graduated from the University of Puerto Rico School of Medicine and trained in the Ophthalmology residency program at the Massachusetts Eye and Ear Infirmary, Harvard Medical School followed by fellowships in Corneal and External Diseases and Uveitis at Harvard. He is an established NEI-funded clinician-scientist. His research is focused on Innate and Adaptive Immunological Responses in High-Risk Corneal Transplantation and on Anterior Segment Immunology. He has authored over 120 publications, 19 book chapters and co-edited 2 books. Dr. Perez is President of the Panamerican Cornea Society and Editor-In-Chief of Current Ophthalmology Reports.



HERMANN D. SCHUBERT, MD | Columbia University Professor of Clinical Ophthalmology and Pathology

Dr. Schubert is Professor of Clinical Ophthalmology and Pathology at Columbia University and Director of Ophthalmic Pathology at Presbyterian Hospital in New York. He received his MD from Heinrich Heine University in Dusseldorf Germany and completed residencies in pathology and in ophthalmology at Columbia Presbyterian Hospital in New York. He is the Director of the Ocular Anatomy Section for the annual Lancaster Course, Director of the Ocular Pathology Section for the Greater NY Clinical Science Course, and he has been a member of the Wills Eye review course since 1990. Dr. Schubert is the author, co-author and editor of many publications, book chapters and one book.



LUCIA SOBRIN, MD, MPH | Harvard Medical College Associate Professor of Ophthalmology

Dr. Sobrin is an Associate Professor of Ophthalmology and Director of the Morse Laser Center at the Massachusetts Eye and Ear Infirmary, Harvard Medical School. She received her MD degree from the University of Miami School of Medicine prior to her residency at Bascom Palmer Eye Institute. She completed a medical and surgical retina fellowship at MEEI, followed by a uveitis and ocular immunology fellowship at the Massachusetts Eye Research and Surgery Institute. She joined MEEI as a faculty member of the Retina and Uveitis Services in 2006 and completed an MPH at Harvard School of Public Health in 2008. Her clinical interests include uveitis and autoimmune retinopathy, and her research interests include the epidemiology and genetics of diabetic retinopathy. She has been honored with the ARVO/Alcon Early Career Clinician Scientist Research Award. And in 2015 she was honored with the Alcon Research Institute Young Investigator Award.



JAMES TSAI, MD | Icahn School of Medicine at Mount Sinai Delafield-Rodgers Professor, President of the NYEE of Mount Sinai

Dr. Tsai is the Delafield-Rodgers Professor, Chairman of the Department of Ophthalmology at the Icahn School of Medicine at Mount Sinai and serves as President of The New York Eye and Ear Infirmary of Mount Sinai. Dr. Tsai completed his residency in ophthalmology at the Doheny Eye Institute at USC in Los Angeles. Following his residency, Dr. Tsai completed glaucoma fellowships at the Bascom Palmer Eye Institute at the University of Miami and at Moorfields Eye Hospital and the Institute of Ophthalmology in London. He has authored a wide range of scientific articles and book chapters in glaucoma, as well as the medical textbook, Medical Management of Glaucoma. Dr. Tsai is the recipient of numerous awards, including a Visionary Award from Fight for Sight and a Senior Achievement Award from the AAO.



KENNETH WRIGHT, MD | University of Southern California Director of Pediatric Ophthalmology Research and Education

Dr. Wright is Director of Wright Foundation for Pediatric Ophthalmology & Strabismus, Los Angeles and Clinical Professor of Ophthalmology at the USC Keck School of Medicine. He spent three years as Director of Pediatric Ophthalmology at the Cleveland Clinic. Prior to the Cleveland Clinic, he was a full-time faculty member at USC School of Medicine and Children's Hospital of Los Angeles. Dr. Wright is devoted to the welfare of children and the health of their eyes. He is an internationally respected ophthalmologist and educator. He has authored over 100 scientific papers and 7 textbooks on ophthalmology and eye surgery including the third edition of the renowned thousand page textbook, Pediatric Ophthalmology and Strabismus.



LUCY H. YOUNG, MD, PHD | Harvard Medical College Associate Professor of Ophthalmology

Dr. Young is Associate Professor of Ophthalmology at the Massachusetts Eye and Ear Infirmary, Harvard Medical School. She received her MD degree from the University of Wisconsin-Madison and her PhD degree in Biology from Harvard University prior to her Ophthalmology residency and Vitreoretinal fellowship at the Massachusetts Eye and Ear Infirmary, Harvard Medical School. Her clinical interests include diabetic retinopathy, age-related macular degeneration, trauma-related retinal complications, and retinal infections. She is the director of The Lancaster Course in Ophthalmology and has been on its faculty since 1990. Her publication list includes over 100 peer review papers, book chapters and a book on Endophthalmitis.

SATURDAY, FEBRUARY 24 OPTICS / LENS / REFRACTIVE SURGERY					
7.15am-3.45pm	Optics I,II and III	GUYTON / IRSCH	7.30pm-9.00pm	Refractive Surgery	W. CHAMON
4.00pm-6.30pm	Optics Problems	GUYTON / IRSCH			
SUNDAY, FEBRUARY 25 OPTICS / PATHOLOGY / ANATOMY / IMAGING					
7.00am-9.30am	Lens, Cataracts & Cataract Surgery	D. AZAR	1.45pm-3.30pm	Ocular Pathology I	A. LIN
9.45am-11.30am	Ocular Embryology	H. SCHUBERT	3.45pm-4.45pm	Ocular Pathology II	A. LIN
12.00pm-1.45pm	Ocular Anatomy	H. SCHUBERT	4.45pm-7.00pm	Cases: Ocular Pathology	R. FOLBERG
			7.30pm-9.00pm	Anterior Segment Imaging	N. ALLEMANN
MONDAY, FEBRUARY 26 PEDIATRIC OPHTHALMOLOGY / STRABISMUS / ORBIT / OCULOPLASTICS					
7.00am-9.00am	Pediatric Ophthalmology	C. MOCAN	3.15pm-4.00pm	Eyelid: Anatomy, Malposition & Trauma	A. AHMAD
9.15am-11.30am	Strabismus	N. AZAR	4.15pm-5.00pm	Orbital Tumors & Lacrimal	P. MACINTOSH
12.00pm-1.45pm	Cases: Pediatric Ophthalmology & Strabismus	C. MCKEOWN	5.00pm-5.30pm	Oculoplastics: High Yield Q&A	P. SETABUTR
1.45pm-2.30pm	Orbit: Anatomy & Inflammation	V. AAKALU	5.30pm-7.15pm	Cases: Oculoplastic Surgery/Orbit	G. LELLI
2.30pm-3.15pm	Cosmetic Surgery	A. PUTTERMAN			
TUESDAY, FEBRUARY 27 NEURO-OPHTHALMOLOGY / GLAUCOMA					
7.00am-7.45am	Pupil	M. GILBERT	2.30pm-3.00pm	Angle Closure Glaucoma	S. JAIN
7.45am-9.15am	Efferent Neuro-Ophthalmology	H. MOSS	3.00pm-3.30pm	Glaucoma Clinical Trials	T. VAJARANANT
9.30am-10.00am	Chiasm & Cerebral Disorder Affecting Vision	H. MOSS	3.30pm-4.00pm	Medical Therapy of Glaucoma	S. JAIN
10.00am-11.15am	Optic Neuropathies	M. GILBERT	4.15pm-4.45pm	Glaucoma Surgery & Complications	A. RAHMAN
11.45am-1.45pm	Cases: Neuro-Ophthalmology	N. NEWMAN	4.45pm-5.30pm	Glaucoma High Yield Q&A	T. VAJARANANT
1.45pm-2.30pm	Open Angle Glaucoma	S. JAIN	5.30pm-7.15pm	Cases: Glaucoma	J. TSAI
WEDNESDAY, FEBRUARY 28 UVEITIS / RETINA					
7.00am-7.45am	Episcleritis & Scleritis	N. ACHARYA	1.30pm-2.30pm	Retinal Vascular Diseases	F. CHAU
7.45am-8.45am	Anterior & Intermediate Uveitis	N. ACHARYA	2.30pm-3.15pm	Pediatric Retinal Diseases	R.V.P. CHAN
9.00am-10.30am	Posterior & Panuveitis	L. SOBRIN	3.15pm-4.00pm	Acquired Diseases Affecting the Macula I	F. CHAU
10.30am-11.00am	Systemic Immunomodulatory Therapy	L. SOBRIN	4.15pm-5.00pm	Acquired Diseases Affecting the Macula II	Y. LEIDERMAN
11.00am-12.00pm	Cases: Uveitis	ACHARYA/SOBRIN	5.00pm-5.45pm	Vitreoretinal Surgical Diseases	Y. LEIDERMAN
12.30pm-1.30pm	Retinal Dystrophies & Degeneration	L. ULANSKI	5.45pm-7.30pm	Cases: Retina	L. YOUNG
THURSDAY, MARCH 1 CORNEA / ONCOLOGY					
7.00am-7.30am	Cornea & Ocular Surface - Fundamentals	M. ROSENBLATT	12.15pm-1.00pm	Corneal Transplantation	E. TU
7.30am-8.15am	Ocular Surface Neoplasias & Trauma	M. ROSENBLATT	1.00pm-2.45pm	Cornea & Anterior Segment Manifestations of Immune Disease and Others	V. PEREZ
8.15am-9.15am	External Diseases & Cornea Immunology	E. TU	2.45pm-4.00pm	Ocular Oncology I	J. FRANCIS
9.30am-10.45am	Cornea Congenital Anomalies & Dystrophies	S. JAIN	4.15pm-7.15pm	Ocular Oncology II	J. FRANCIS
10.45am-11.45am	External Diseases & Cornea Infectious Disease	E. TU			

Clinical Applications / CONCEPTS | FRIDAY, MARCH 2

7.00am-8.45am R. LINSSENMEIER Ocular Physiology The physiology of various eye structures and systems will be described, including aqueous and vitreous formation, IOP, accommodation, retinal circuits and non-invasive tests of retinal function.	12.15pm- 2.15pm K. WRIGHT Concepts in Pediatric Ophthalmology Evaluation techniques for young children that provide the maximum gain of information will be described. The classification, diagnosis, and current concepts in treatment options for amblyopia, strabismus and nystagmus will be discussed. The most common diseases and malformations of the corneas, lacrimal drainage system, anterior segment, and iris seen in children will be described.
9.00am-10.00am I. MAUMENEE Ocular Genetics Common ophthalmic genetic diseases, and the development of treatment approaches will be deascribed and evaluated.	2.15pm-4.00pm L. JAMPOL Concepts in Retina Diagnostic tools and their application for diagnosing retinal dosorders will be described. The importance of a thorough medical history for the diagnosis of infectious retinitis will be discussed.
10.00am- 11.45am A. KAZLAUSKAS Concepts in Angiogenesis and Gene Therapy A review and discussion of current antiangiogenic therapies, different gene therapy strategies for ophthalmological diseases and various surgical approaches to gene delivery, and on-going (and future) human trials.	4.15pm-6.15pm K. KENYON Concepts in Cornea The pathogenesis of common disorders affecting the eyelid margin, conjunctiva, cornea and sclera will be explained. Steps in an ocular examination for corneal or external eye disease along with the appropriate laboratory and other diagnostic tests will be described. The developmental and metabolic alterations that lead to structural changes of the cornea will be described. Indications and techniques of surgical procedures for managing corneal disease, trauma, and refractive error will be discussed.

Comprehensive Ophthalmology



Soledad Cortina, MD [^]



Anthony Finder, MD



Bryan Kim, MD



Charles Kinnaird OD



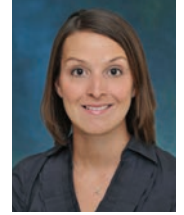
Charlotte Joslin, OD, PhD



Timothy McMahon, OD⁺



Angelica Scanzera, OD⁺



Ellen Shorter, OD⁺

Contact Lens

Cornea & Refractive Surgery



Elmer Tu, MD



Dimitri Azar, MD, MBA



Mark Rosenblatt, MD, PhD, MBA



Joel Sugar, MD



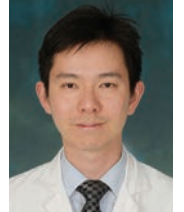
Ali Djalilian, MD



Sandeep Jain, MD⁺



Jose de la Cruz, MD ^{**}



Charles Yu, MD

Glaucoma



Thasarat Vajaranant, MD



Jacob Wilensky, MD



Ahmad Aref, MD



David Hillman, MD



Pete Setabutr, MD ^{*}



Allen Putterman, MD



Vinay Aakalu, MD, MPH



Amjad Ahmad, MD

Oculoplastics

Pediatric Ophthalmology & Adult Strabismus



Nathalie Azar, MD



Marilyn Miller, MD



Irene Maumenee, MD



Cem Mocan, MD



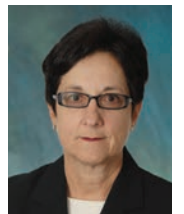
Kimberlee Curnyn, MD



Lawrence Kaufman, MD, PhD



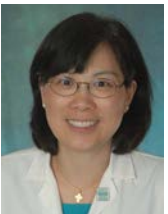
Benjamin Mathew, MD



Joan Sleimack, OD, MPH

Low Vision

Retina



Jennifer Lim, MD



Norman Blair, MD



R.V. Paul Chan, MD



William Mieler, MD



Felix Chau, MD



Yannek Leiderman, MD, PhD



Lawrence Ulanski, MD



Amy Lin, MD

Ocular Pathology

Neuro-Ophthalmology



Peter MacIntosh, MD [^]



James Goodwin, MD



Anil Gulati, MD



Pooja Bhat, MD



Ann-Marie Lobo, MD



Andres Kazlauskas, PhD



Molly Gilbert, MD



Sachin Jain, MD

Uveitis

Other Speakers

Register Online Today!

www.IllinoisEyeReview.org

Illinois Eye Review, February 24 - March 2, 2018

80 hours of CME credit!

VENUE

University of Illinois at Chicago
Student Center West
828 S. Wolcott Ave., Chicago, IL



COURSE DIRECTOR Nathalie Azar, MD

PURPOSE The purpose of the Illinois Eye Review is concomitantly to provide participants with the fundamentals of ophthalmology research and practice; provide intensive sessions that explicate cutting edge treatments and advances within the field; and offer a variety of topical lectures by eminent ophthalmologists that will provide an opportunity for participants to apply what they have learned to real-world clinical problems.

COURSE OBJECTIVES By the end of the course participants should be able to:

- Describe basic tenets of the fundamentals of clinical ophthalmology covering all subspecialties.
- Demonstrate by review and conceptualization through case discussions, the epidemiology, clinical presentation, and management of ophthalmological diseases.
- Distinguish, interpret and improve their expertise on the pathophysiology of ophthalmic diseases.

INTENDED AUDIENCE This course has been organized for ophthalmologists, general physicians, and optometrists encompassing all levels of experience and knowledge.

ACCREDITATION The University of Illinois at Chicago (UIC) College of Medicine is accredited by the Accreditation Council for Continuing Medical Education to provide continuing medical education for physicians.

CREDIT DESIGNATION STATEMENT The University of Illinois at Chicago (UIC) College of Medicine designates this live activity for a maximum of 80 AMA *PRA Category 1 CME Credit(s)*[™]. Physicians should claim only the credit commensurate with the extent of their participation in the activity.

REGISTRATION The registration fee is normally \$595. Early registration is available until January 31, 2018 at \$450. This includes continental breakfast, breaks and lunch. On the first 2 days, dinner will also be provided.

QUESTIONS?

CONTACT: Nalin Kumar

PHONE: 312.413.5414 or 312.996.6590

EMAIL: nalin@uic.edu **FAX:** 312.996.0430

<http://www.illinoiseyereview.org>