

Version 10.x - ArcGIS for Desktop Student Trial software Instructions

A. Before you install ArcGIS for Desktop

1. Check our [system requirements](#) (10.7.1) to make sure your computer has the hardware and software required for the trial.

B. Activate your authorization code

2. Visit www.esri.com/educationedition to begin the process of activating and downloading your ArcGIS for Desktop Student Trial software.
3. Log in using your Existing Esri account, or sign-up for a new Esri account, if necessary.
 - Note: Your instructor may have requested an account for you that is linked with the UNCW ESRI account. If this is the case, use the ArcGIS Organization URL login.
4. Enter the authorization code and click Activate ArcGIS.
 - a. If you need to download ArcGIS for Desktop, proceed to step 5.
 - b. If you received the ArcGIS for Desktop software from your instructor or license administrator, or will be installing from a network server, proceed to step 10.
5. Click the button for the ArcGIS for Desktop software version being activated.

Support for the ArcGIS Desktop Student Trial is available at <https://desktop.arcgis.com/en/arcmap/latest/get-started/>.

Select Version to check system requirements:

The screenshot shows the ArcGIS Desktop 10.7.x system requirements page. The page title is "ArcGIS Desktop 10.7.x system requirements". The page is divided into several sections:

- Navigation:** ArcGIS Desktop, ArcGIS Pro, ArcMap, SEARCH, Sign In, English, esri.
- System Requirements:** ArcGIS Desktop 10.7 | Other versions (10.8, 10.7, 10.6, 10.5, 10.4, 10.3). A dropdown menu is open showing these versions. The "Supported platform" section is highlighted.
- Supported platforms:** Check your computer's ability to run ArcGIS Desktop. A note states: "Microsoft .NET Framework 4.5.2 or later must be installed prior to installing ArcMap." A tip states: "ArcGIS Desktop requires Microsoft Visual C++ 2017 (update 5 or later) Redistributable (x86). If the Visual C++ 2017 (update 5 or later) Redistributable is not already installed, running setup.exe will install it before setup.msi is launched. Setup.msi will not install if Microsoft Visual C++ 2017 (update 5 or later) Redistributable (x86) is not already installed."

https://www.esri.com/en-us/arcgis/products/arcgis-desktop-student-trial

esri Products Solutions Support & Services News About

ArcGIS Desktop Student Trial

Welcome! To activate your ArcGIS Desktop Student trial software, please log in with your Esri Account.

Log in to activate your license

[I have an Esri Account](#)

[I need to create a new Esri Account](#)

Your ArcGIS Desktop Student Trial includes a 1-year license for

- ArcGIS Desktop
- The following ArcGIS Desktop extensions
 - ArcGIS 3D Analyst
 - ArcGIS Geostatistical Analyst
 - ArcGIS Image Analyst
 - ArcGIS Network Analyst
 - ArcGIS Publisher
 - ArcGIS Schematics
 - ArcGIS Spatial Analyst
 - ArcGIS Tracking Analyst
 - ArcGIS Data Interoperability
 - ArcGIS Data Reviewer
 - ArcGIS Workflow Manager
- Tutorial data

If using the organization account: Enter **uncw** in the URL field, Continue and Select the UNCW blue box.

Sign in with esri

ArcGIS login

Your ArcGIS organization's URL

uncw .maps.arcgis.com

Remember this URL

Continue

GitHub Facebook Google Apple

No account? [Create a public account.](#)

Privacy

Sign in to University of North Carolina Wilmington with esri

UNCW

ArcGIS login

Username

Password


Keep me signed in

Sign In

[Forgot username?](#) or [Forgot password?](#)

Privacy

If using your own account: Enter your user name and password, Sign In





Sign in with 

ArcGIS login ^

Keep me signed in

[Forgot username?](#) or [Forgot password?](#)

Your ArcGIS organization's URL ∨


   

No account? [Create a public account.](#)

[Privacy](#)

Enter the authorization number provided to you. The format is EVA123456789. Select **Activate ArcGIS**.

← → ↻ 🏠

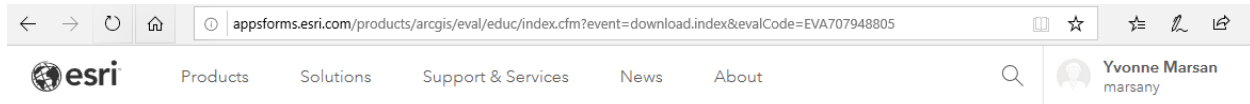
 [Products](#) [Solutions](#) [Support & Services](#) [News](#) [About](#)

Activate your ArcGIS for Desktop Trial

Enter Authorization Number

Your authorization number was provided by your instructor or is printed on your DVD.
The format of the code is EVA123456789.

Select the desired software to download. Note: You can download both ArcGIS Pro 2.4 and ArcGIS 10.7.1 in this step if needed.



Please follow the steps below to download and install ArcGIS 10.7.1 for Desktop.

1. If you do not currently have an earlier version of ArcGIS installed on your machine, proceed to step 2.

If you have ArcGIS version 10.1 or later installed, you do not need to uninstall it before installing version 10.7.1; the ArcGIS setup package will detect and upgrade your ArcGIS for Desktop software. If you have ArcGIS version 10.0 or earlier installed, please uninstall it using the Uninstall Utility (download below) before installing ArcGIS.

2. Download ArcGIS for Desktop, Microsoft .NET Framework 3.5, and the other files you would like to install. Please note that ArcGIS Data Interoperability, ArcGIS Data Reviewer, and ArcGIS Workflow Manager require ArcGIS for Desktop.
 - When downloading with the Esri Download Manager, you can select and download multiple products. However, only one product should be launched at a time when the downloads are complete.
 - Make sure you have write access to your download directory location as well as your ArcGIS installation directory location, and that no one is accessing it.
3. Install the Microsoft .Net Framework 3.5 Service Pack 1 below.
 - ArcGIS Pro requires [Microsoft .NET Framework 4.5](#) and [Microsoft Internet Explorer](#) version 8 or newer. Before running the installation program for ArcGIS Pro, ensure that your machine meets these prerequisites. [Quick start for ArcGIS Pro](#) provides an overview of installing and setting up ArcGIS Pro and links to detailed resources, including [system requirements](#).
 - ArcMap requires [Microsoft .NET Framework 3.5 SP1](#) and [Microsoft Internet Explorer](#) version 7 or newer. Before running the installation program for ArcMap, ensure that your machine meets these prerequisites. The [quick start guide](#) provides an overview of installing and setting up ArcMap and links to detailed resources, including [system requirements](#).

4. Install and authorize ArcGIS for Desktop

- Select a destination folder to extract the install files to. If you choose, you can automatically launch the setup after the files have been extracted.
- When prompted, select **ArcGIS for Desktop Advanced Single Use**.
- When prompted, accept the default, **I do not wish to authorize any extensions** at this time. The extensions will be authorized automatically.
- Enter your authorization number: **EVA707948805**.

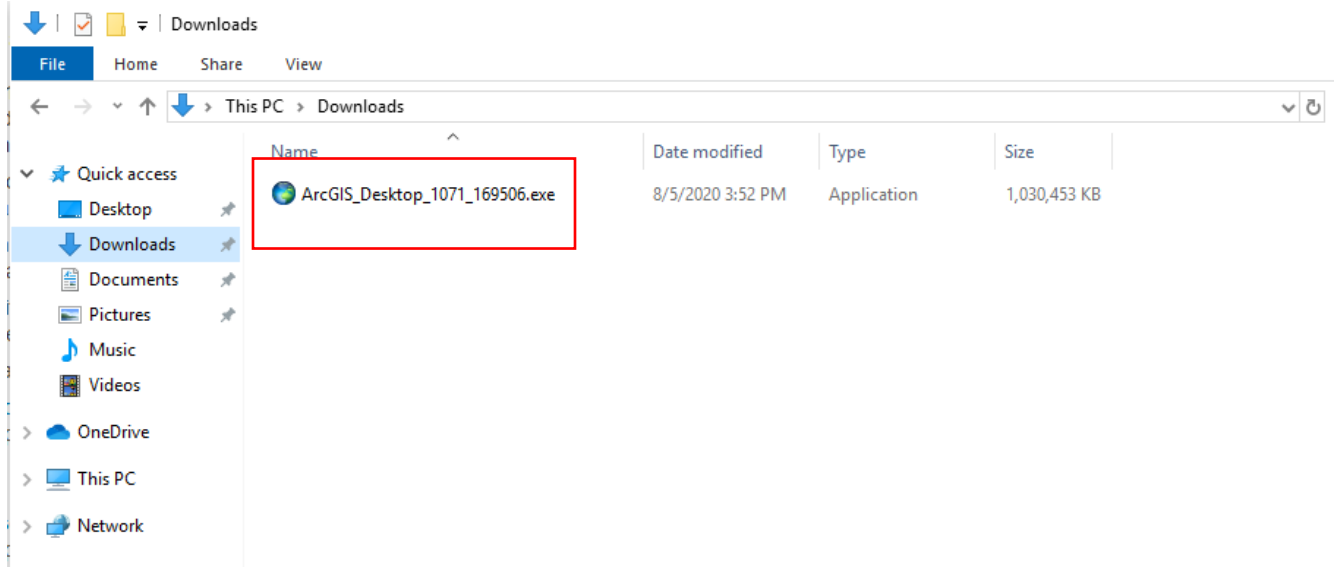
You will also receive an email.



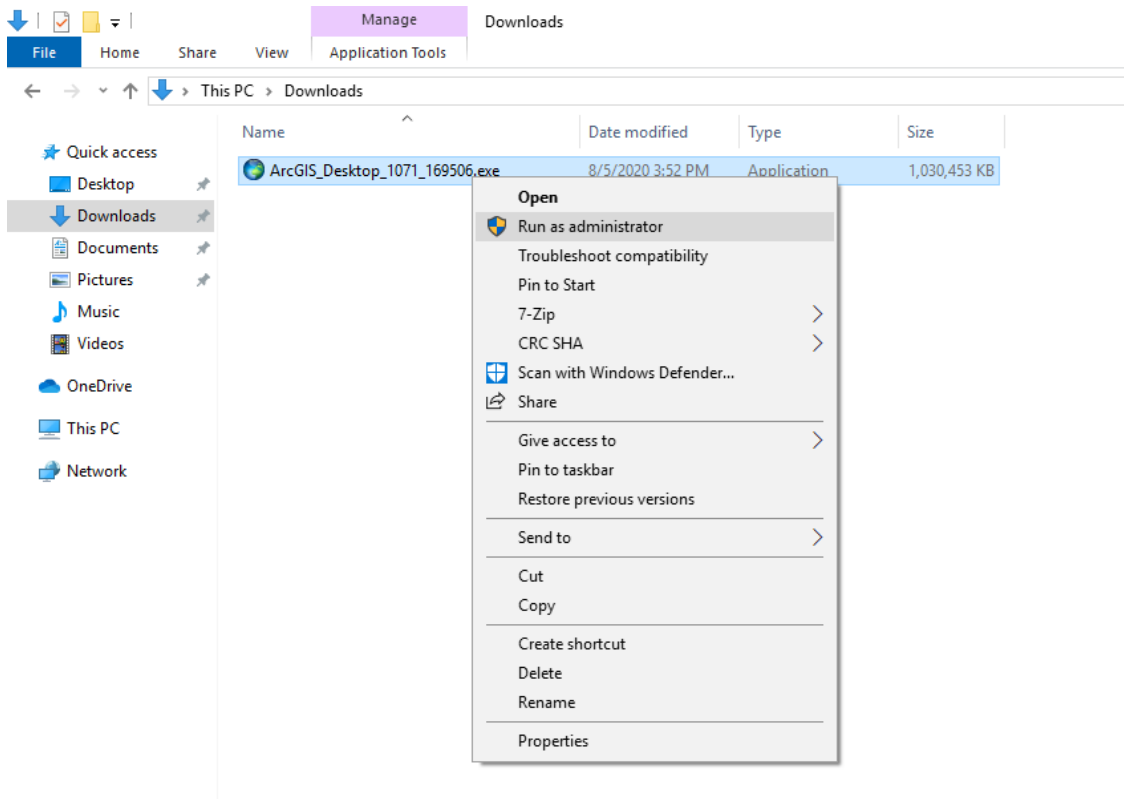
File Description	Documentation	Download Size	English
ArcGIS Pro	Quick Start Guide	1.50 GB	Download English
ArcGIS Pro Offline Help		260.96 MB	Download English
ArcGIS Pro SDK for .NET		83.25 MB	Download English
ArcGIS Data Interoperability for Pro		1,001.45 MB	Download English
ArcGIS Pro Database Support		63.50 MB	Download English
ArcGIS Coordinate Systems Data for ArcGIS Pro Per User Install		1.21 GB	Download English
ArcGIS Coordinate Systems Data (ArcMap and Pro)		991.95 MB	Download English
ArcGIS Desktop (ArcMap)	Install Guide	1,010.27 MB	Download English
ArcGIS Data Interoperability for Desktop (ArcMap)		1.12 GB	Download English
ArcGIS Data Reviewer for Desktop (ArcMap)	Install Guide	65.05 MB	Download English
ArcGIS Workflow Manager for Desktop (ArcMap)	Install Guide	44.62 MB	Download English
Database Server (Desktop)	Install Guide	355.22 MB	Download English
ArcReader		494.24 MB	Download English
ArcGIS Tutorial Data for Desktop		1.65 GB	Download English

Select: Save the file

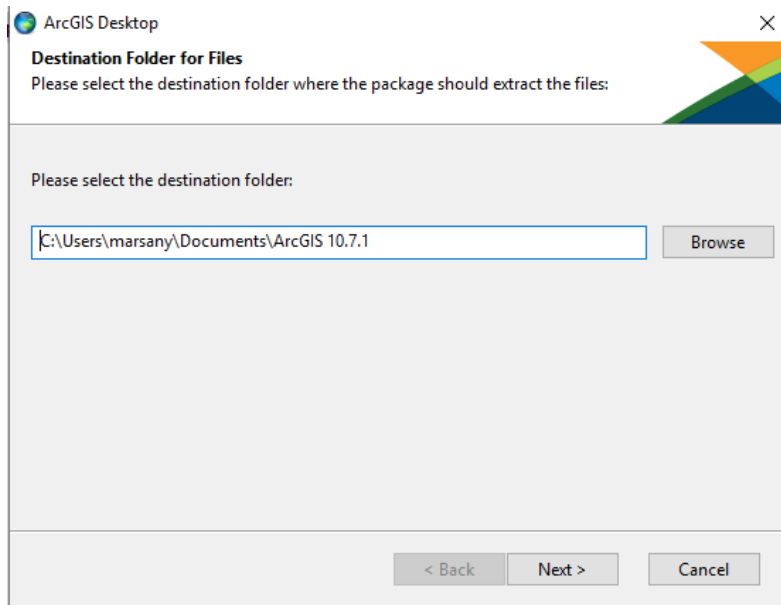
Locate the File in your Downloads Folder



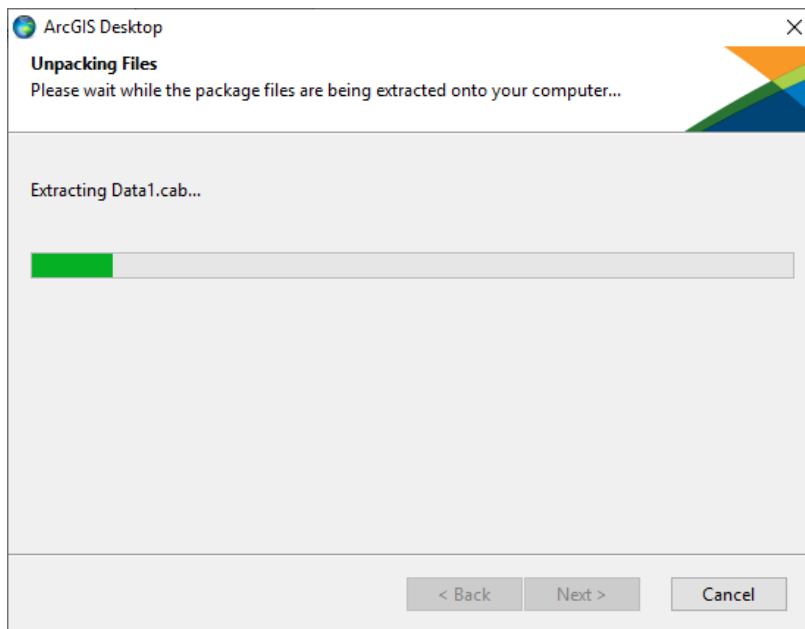
Right click on the .exe file and select Run as Administrator



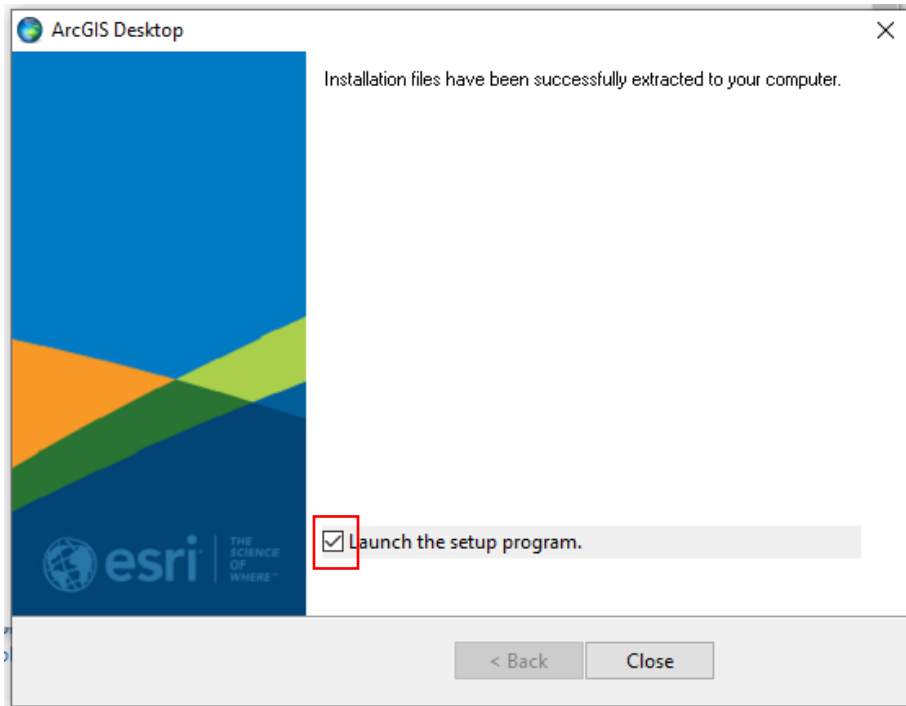
Prompt: Allow to make changes on this computer



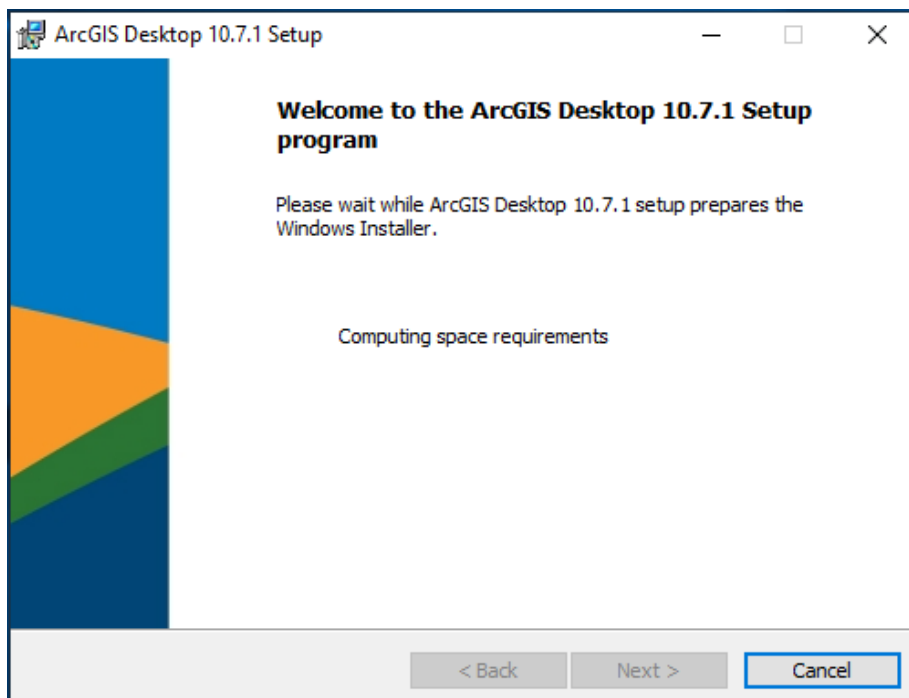
Extract files wherever you want on your computer. Make sure you know where to find them (note the folder path)

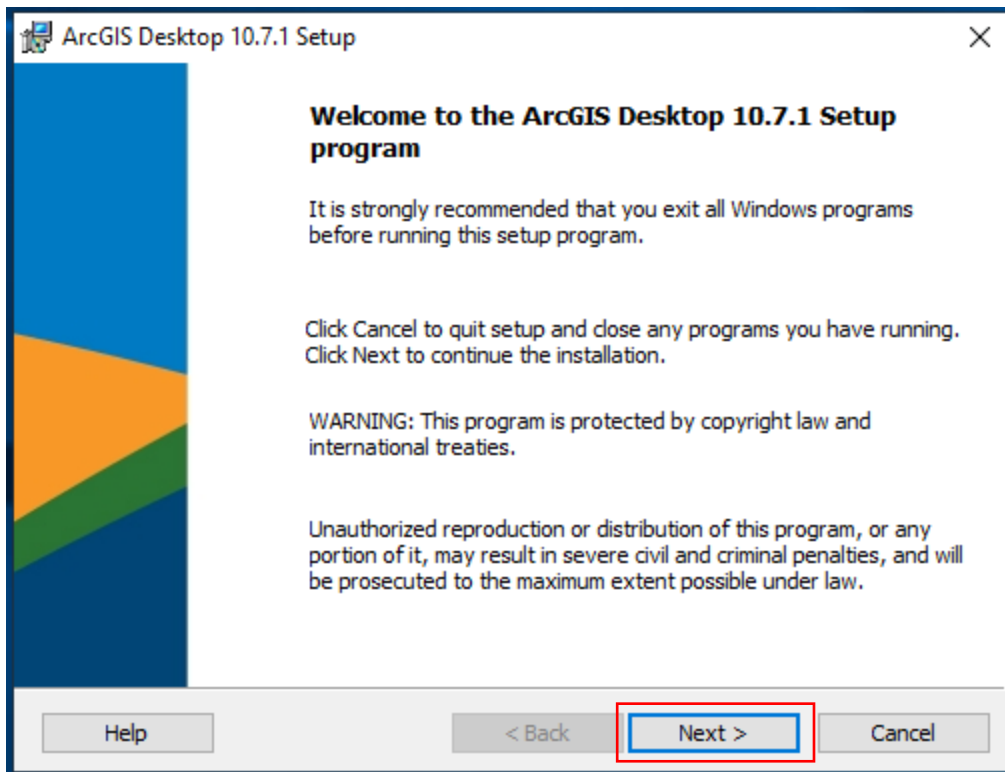


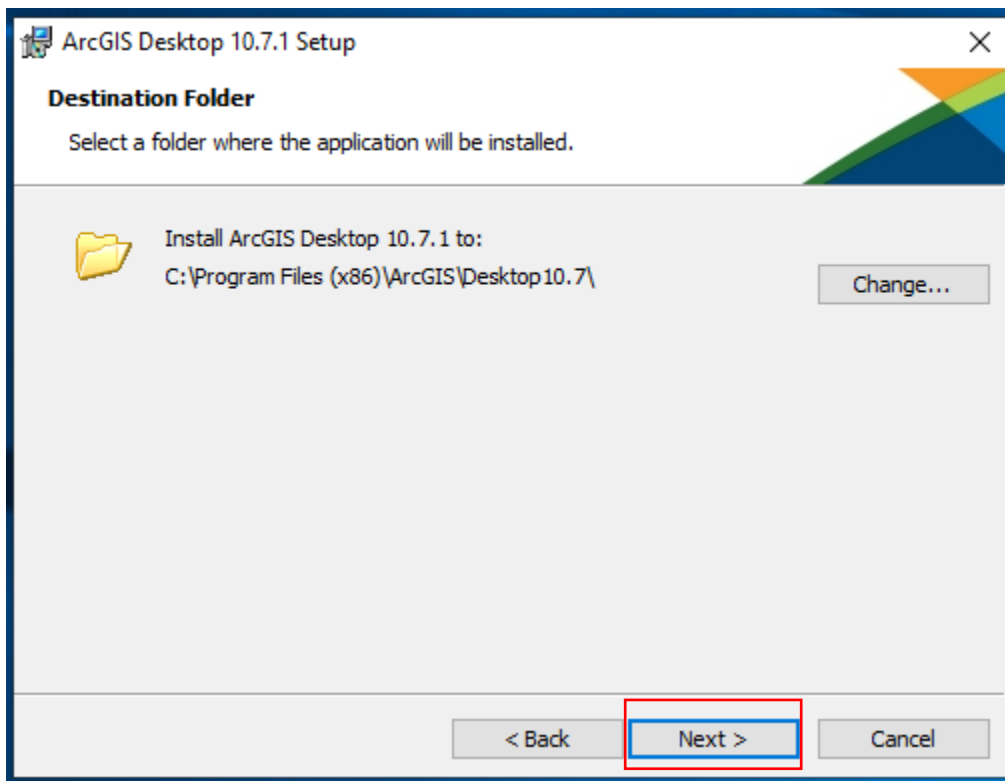
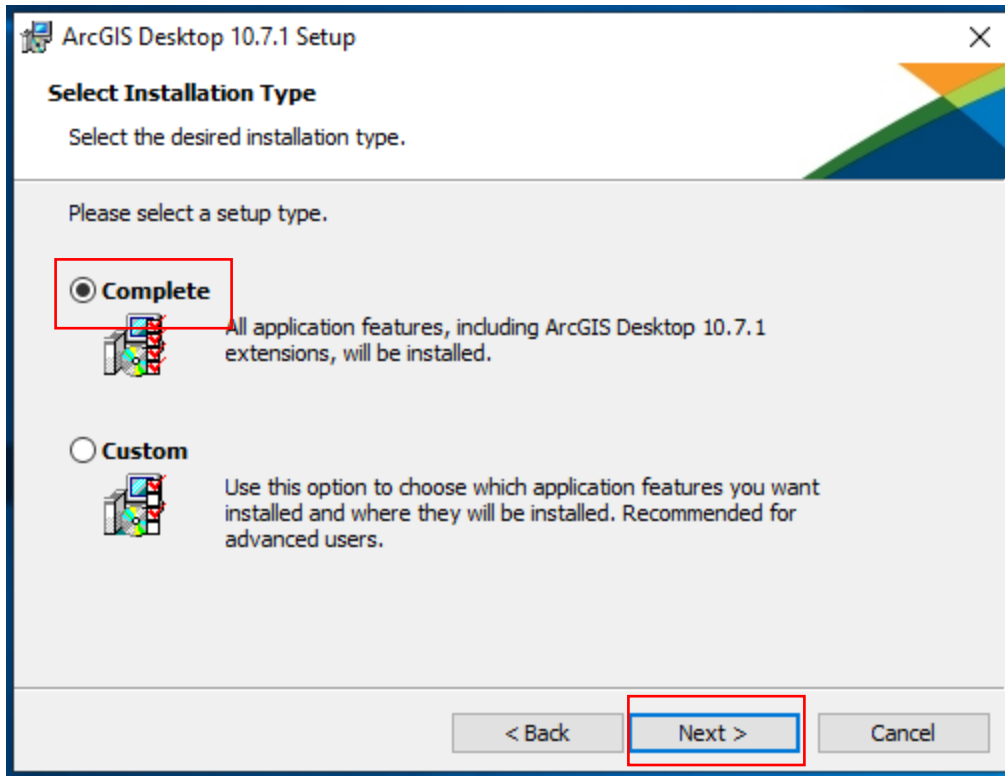
Check the Launch setup program box

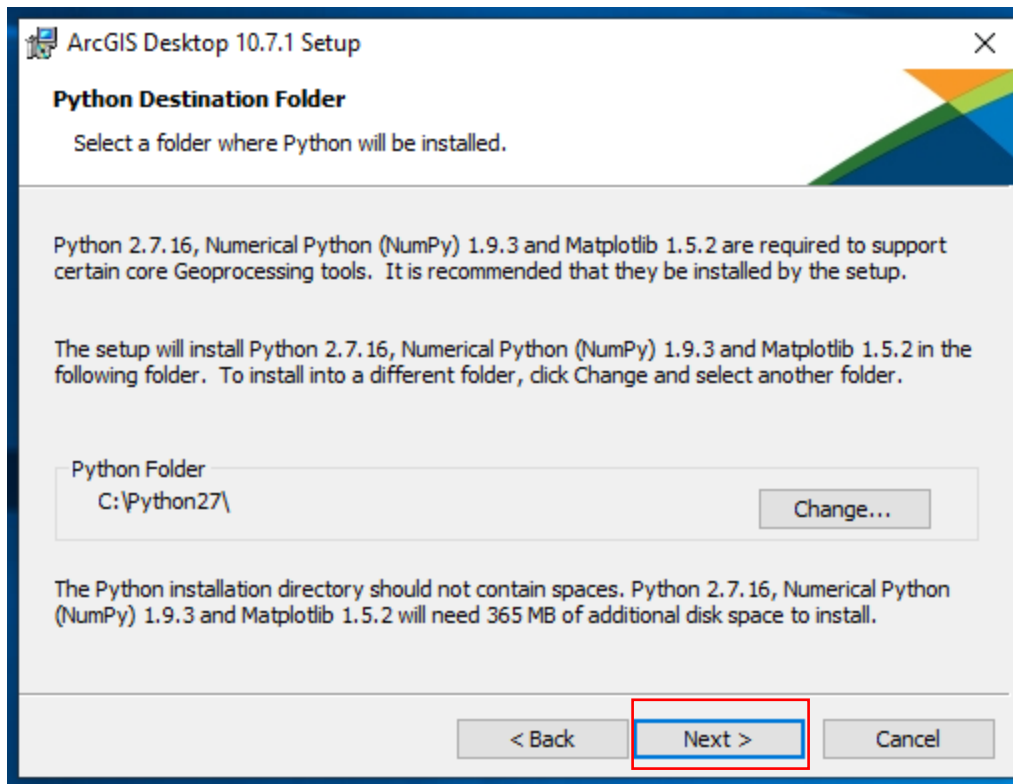


Close the extraction message window. (Note the installer may take a long time to open!)



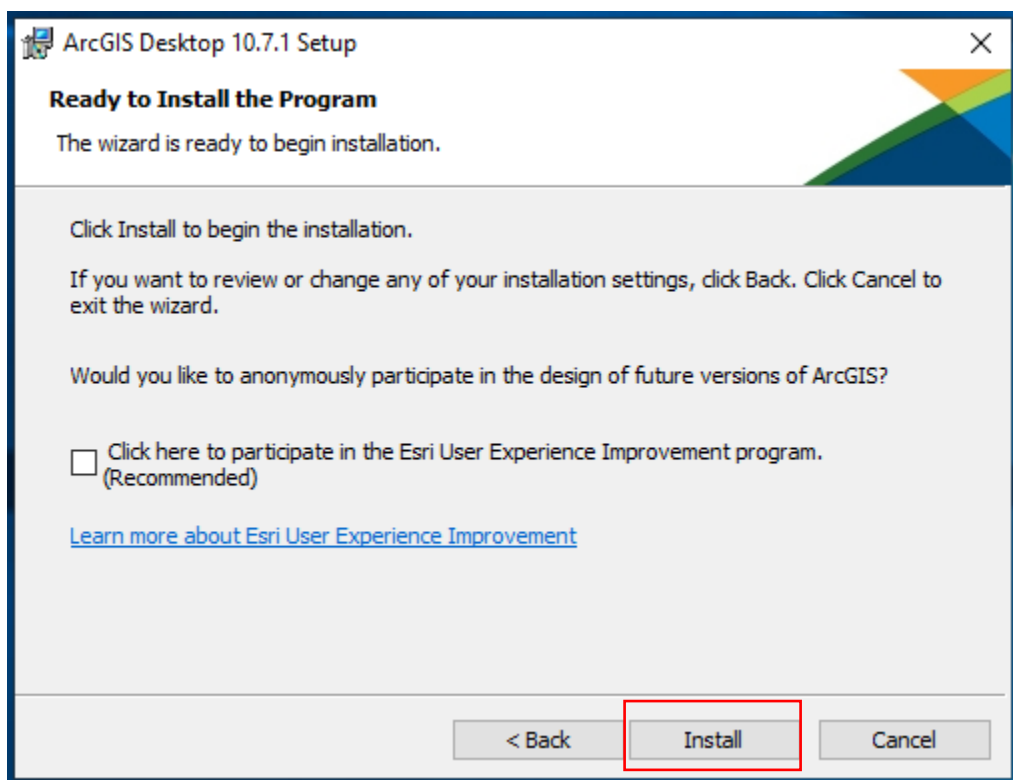


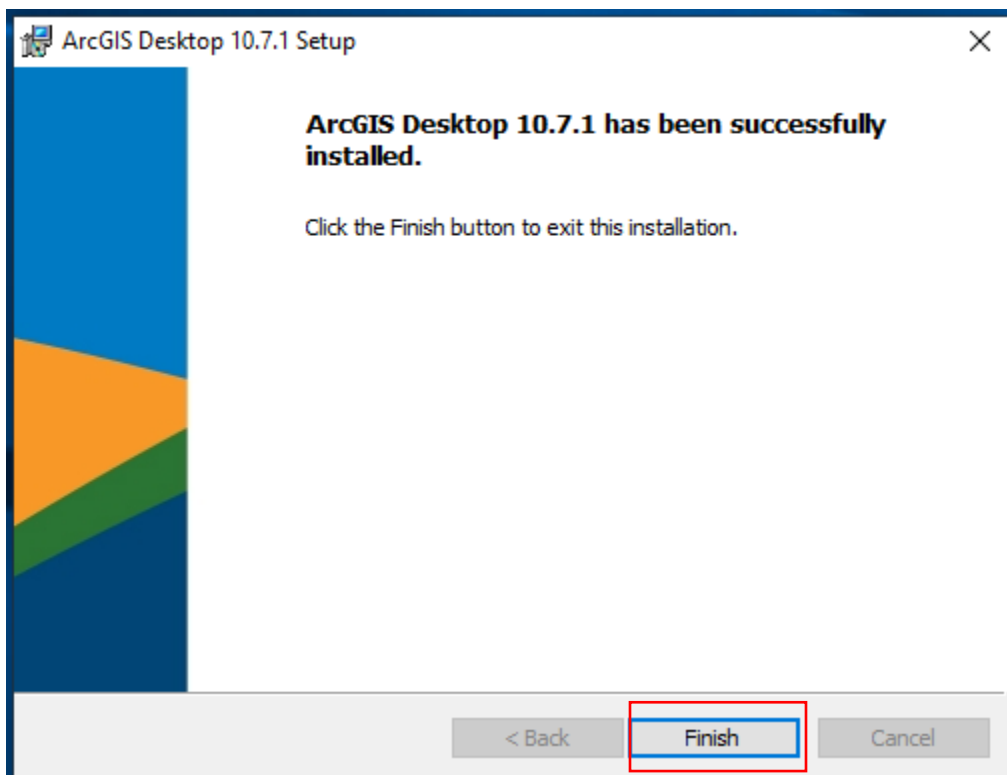
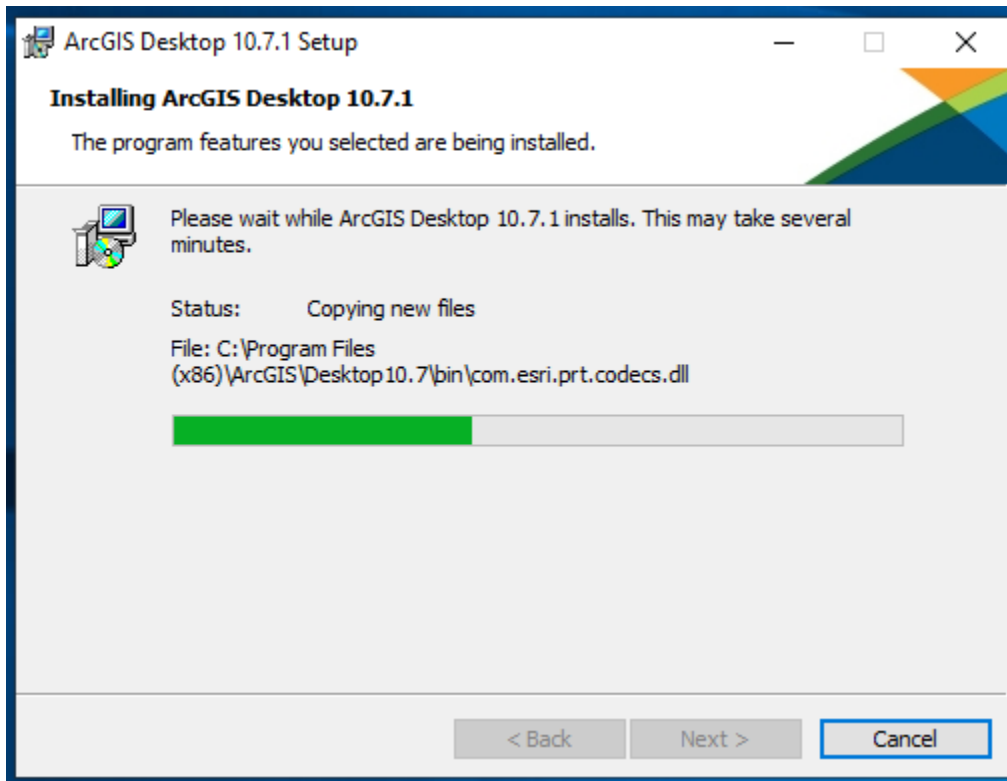




ESRI User Experience Program (optional) Uncheck if desired.

<https://support.esri.com/en/technical-article/000011271>





License the Software

ArcGIS Administrator Wizard ✕

1. Select a product

ArcGIS Desktop

- Advanced (ArcInfo) Concurrent Use
- Advanced (ArcInfo) Single Use
- Standard (ArcEditor) Concurrent Use
- Standard (ArcEditor) Single Use
- Basic (ArcView) Concurrent Use
- Basic (ArcView) Single Use

ArcGIS Engine

- ArcGIS Engine (Concurrent Use)
- ArcGIS Engine (Single Use)
- ArcGIS Engine and ArcGIS Engine Developer Kit (Single Use)

Esri CityEngine

- CityEngine Concurrent Use
- CityEngine Single Use
- CityEngine Named User Licensing

2. Define a License Manager for Concurrent Use products

License Manager

- Define a License Manager now:
Not_Set
- Define a License Manager later from the ArcGIS Administrator

2. Launch the Authorization Wizard for Single Use products

Authorization Wizard

Authorization Options

You must authorize the software prior to use. Select from the options below.

Authorization Options

- I have installed my software and need to authorize it.
- I have already authorized the software and need to authorize additional extensions.
- I have received an authorization file and am now ready to finish the authorization process.

Browse...

< Back

Next >

Cancel

Software Authorization Wizard



Authorization Method

Select the method you want to use to authorize the software.

Authorize with Esri now using the Internet.
(This automatic method is the easiest way to authorize. It requires an Internet connection.)

Authorize at Esri's website or by email to receive your authorization file.

Authorize your software from a local license server.

< Back

Next >

Cancel

Fill in the required boxes with your personal ESRI account information, then click Next.

Software Authorization Wizard ✕

Authorization Information
We will use the following information to verify our records and authorize your use of the software. (* required field)

*First Name:

*Last Name:

*Organization:

Department:

*Address 1:

Address 2:

*City:

*State/Province:

*Zip/Postal Code:

*Location: ▼

*Phone Number:

*Email:

Comment:
Optional user-defined authorization description.

Software Authorization Wizard

Authorization information (continued)
We will use the following information to verify our records and authorize your use of the software. (* required field)

*Your Organization: Education-Student

*Your Industry: Higher Education

*Yourself: Student

The personal information you supplied is protected under Esri's privacy policy. If you want to view Esri's privacy policy, click the View button below.

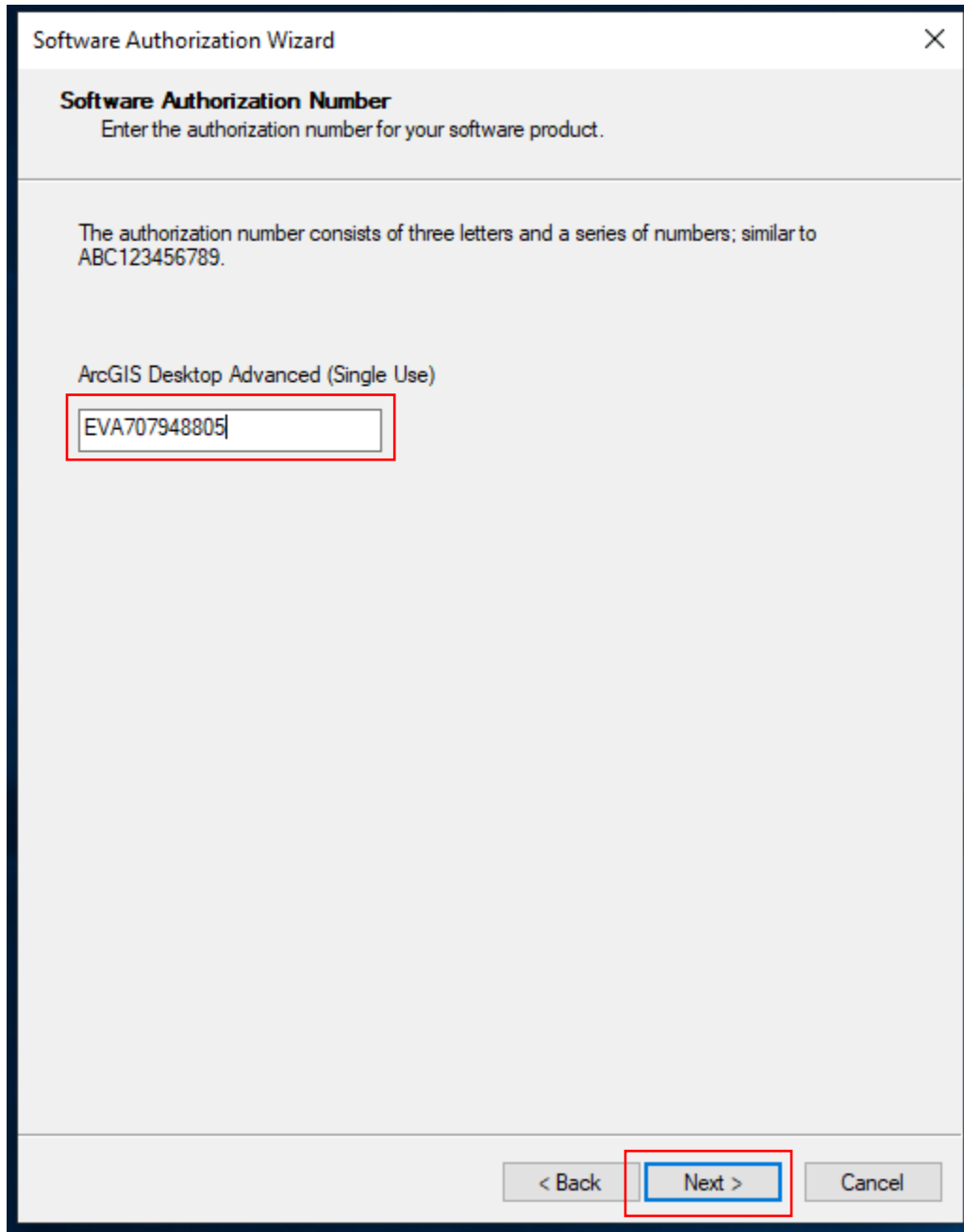
View...

< Back Next > Cancel

ESRI's Privacy Policy

<https://www.esri.com/en-us/privacy/overview>

Enter the Software Authorization Number (The same as used to access the download page, EVA....)



The image shows a 'Software Authorization Wizard' dialog box. The title bar reads 'Software Authorization Wizard' with a close button (X) on the right. The main content area has a header 'Software Authorization Number' followed by the instruction 'Enter the authorization number for your software product.' Below this, a paragraph explains: 'The authorization number consists of three letters and a series of numbers; similar to ABC123456789.' Underneath, the software version 'ArcGIS Desktop Advanced (Single Use)' is listed. A text input field contains the authorization number 'EVA707948805'. At the bottom, there are three buttons: '< Back', 'Next >', and 'Cancel'. The 'Next >' button is highlighted with a blue border, and the text input field is highlighted with a red border.

Software Authorization Wizard

Software Authorization Number
Enter the authorization number for your software product.

The authorization number consists of three letters and a series of numbers; similar to ABC123456789.

ArcGIS Desktop Advanced (Single Use)

EVA707948805

< Back Next > Cancel

**Authorize Software Extensions**

Please select an option below.

Options

- I do not want to authorize any extensions at this time.
- I have authorization number(s) to authorize one or more extensions.

Extensions

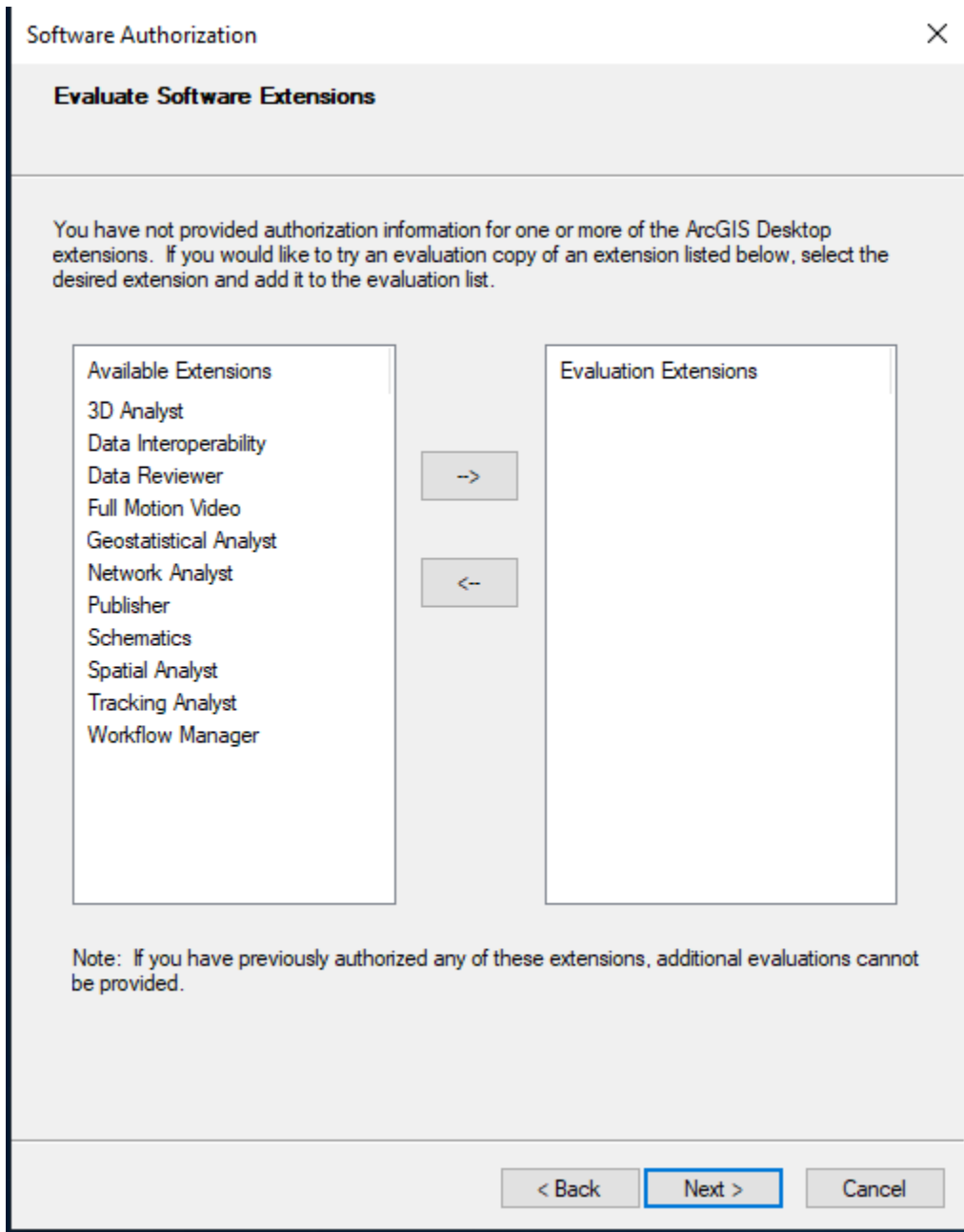
Feature	Authorization Number	
3D Analyst		
Spatial Analyst		
Network Analyst		
Publisher		
Data Interoperability		
Geostatistical Analyst		
Tracking Analyst		
Schematics		
Full Motion Video		
Workflow Manager		
Data Reviewer		

< Back

Next >

Cancel

You want all of the extensions on the left column to be on the right, so select all and click the right arrow.



Evaluate Software Extensions

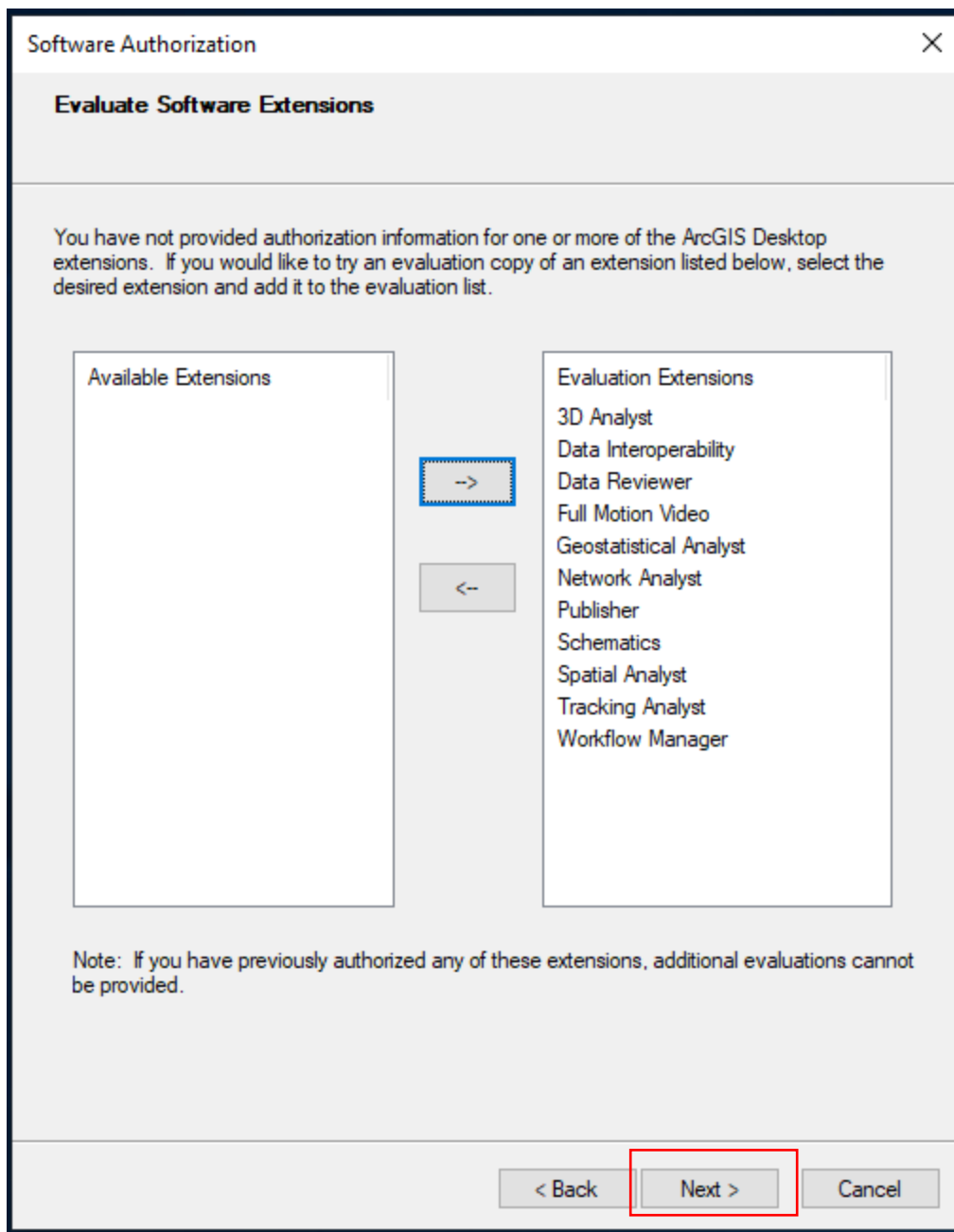
You have not provided authorization information for one or more of the ArcGIS Desktop extensions. If you would like to try an evaluation copy of an extension listed below, select the desired extension and add it to the evaluation list.

Available Extensions	Evaluation Extensions
3D Analyst Data Interoperability Data Reviewer Full Motion Video Geostatistical Analyst Network Analyst Publisher Schematics Spatial Analyst Tracking Analyst Workflow Manager	

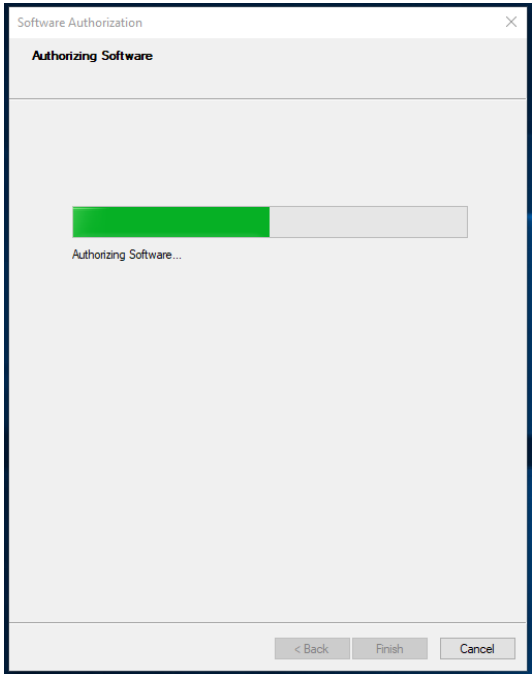
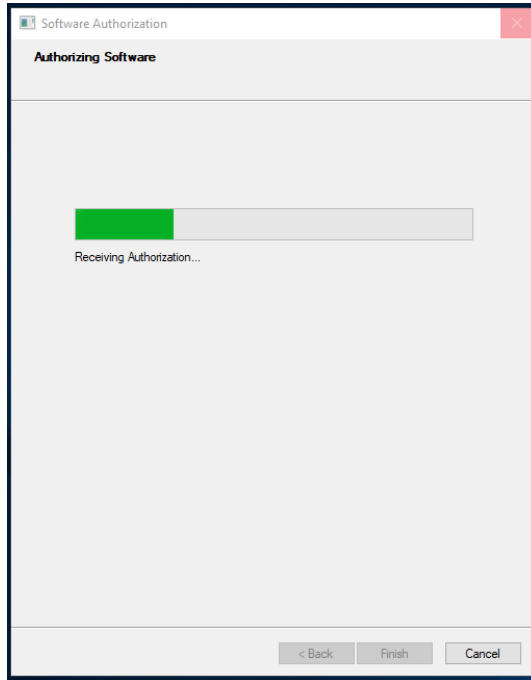
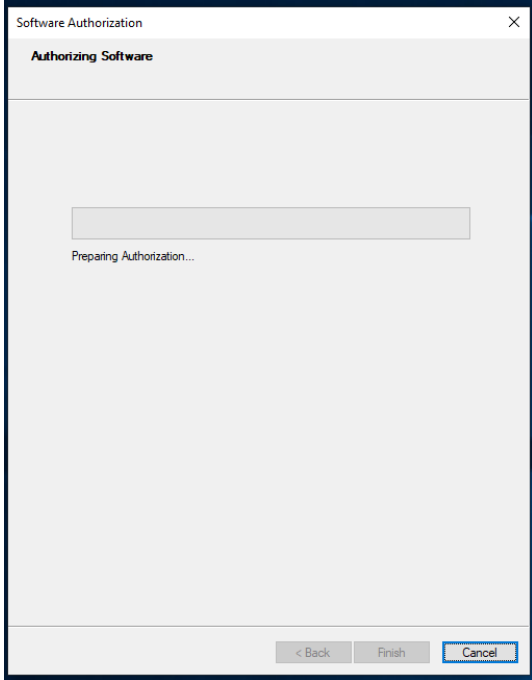
-->

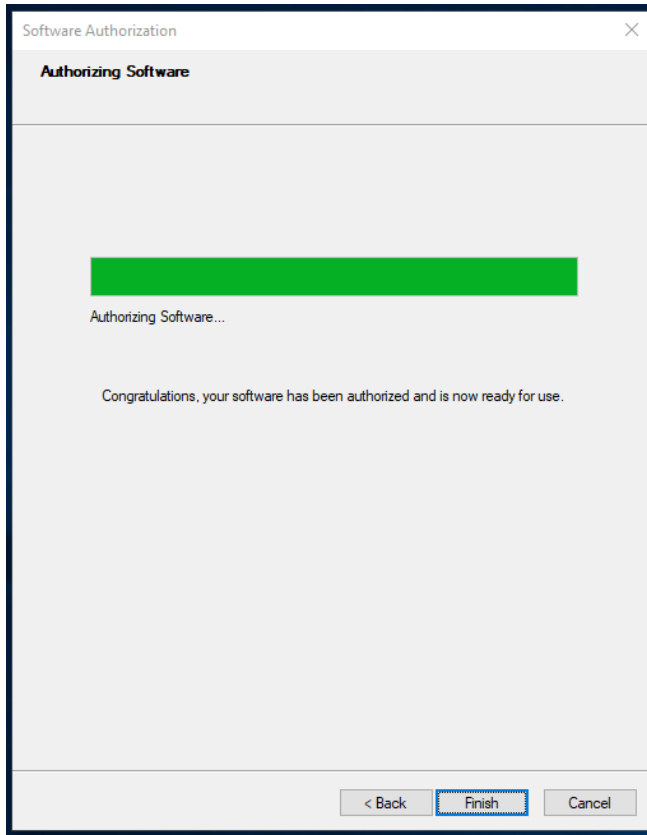
<--

Note: If you have previously authorized any of these extensions, additional evaluations cannot be provided.

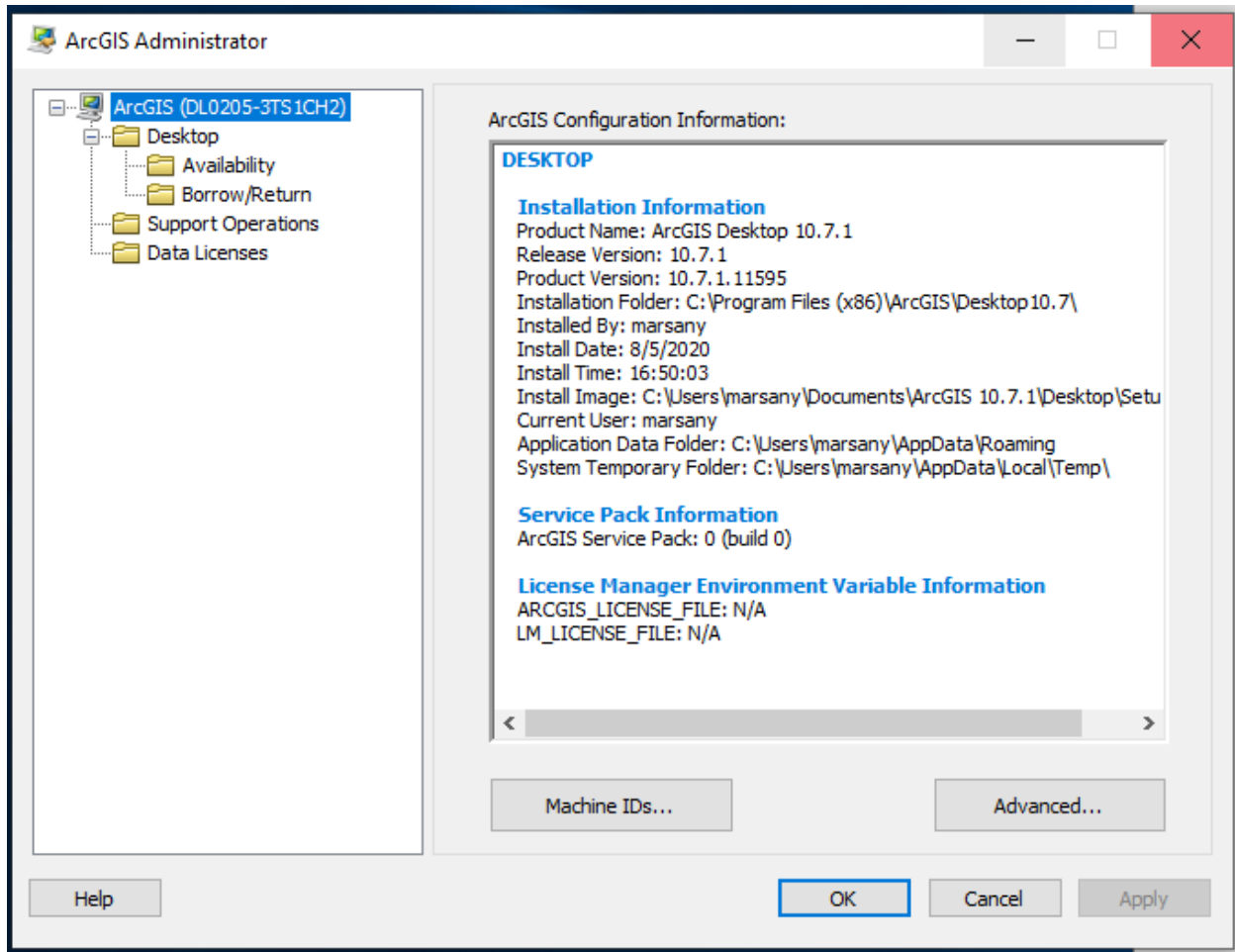


Then, click Next

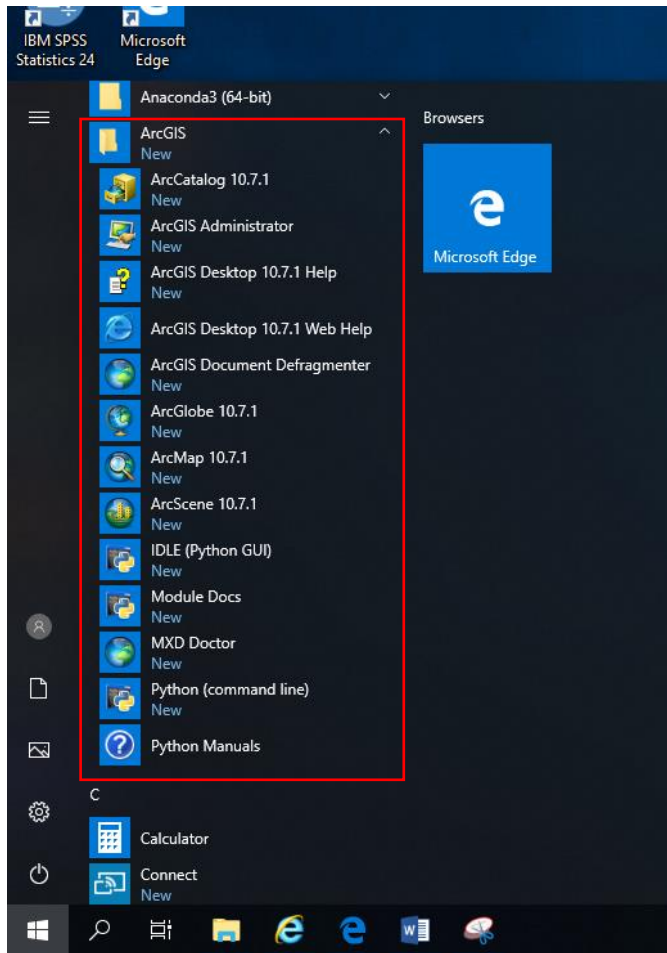




Hooray! Click Finish.

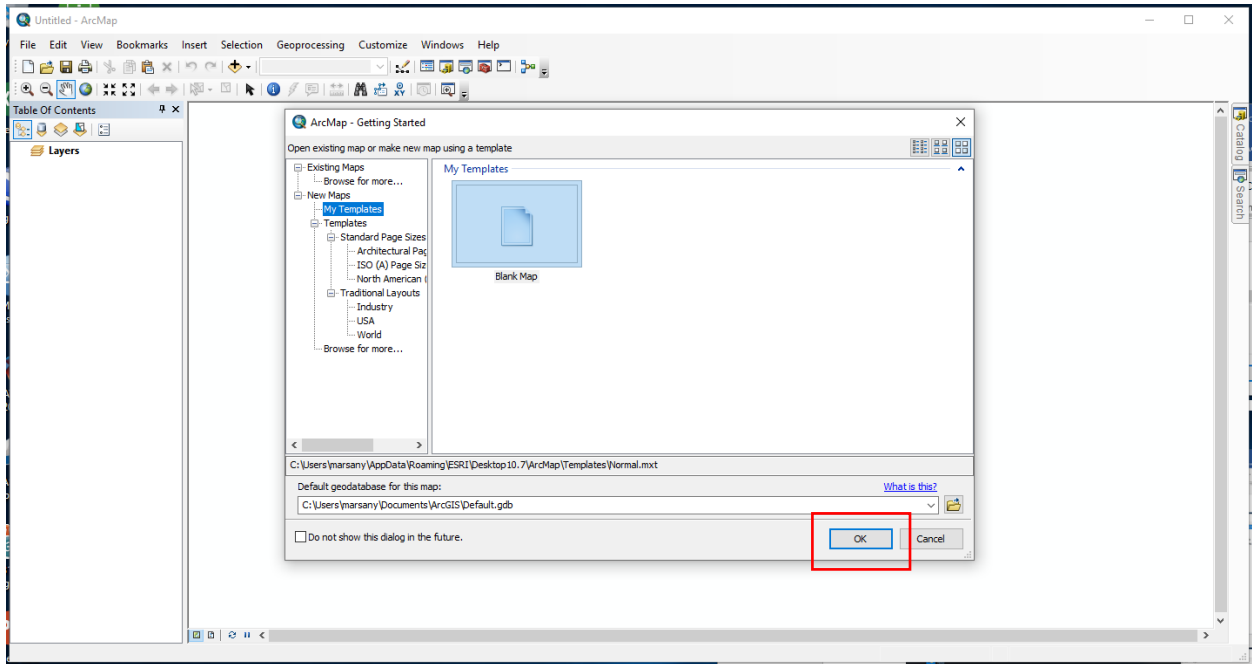


Click the Start button on Windows (bottom left corner of screen). Search for ArcGIS Administrator to see this information.



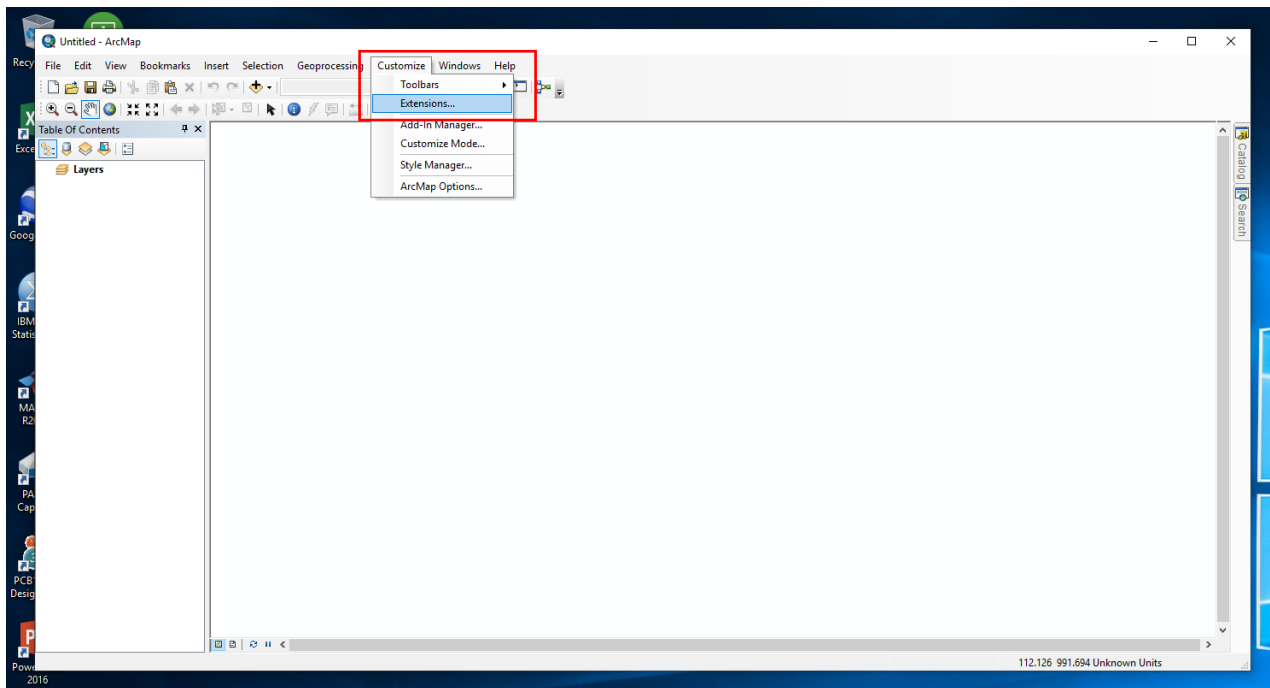
From the Windows start menu, Locate and open the ArcGIS folder to confirm that you have the needed software.

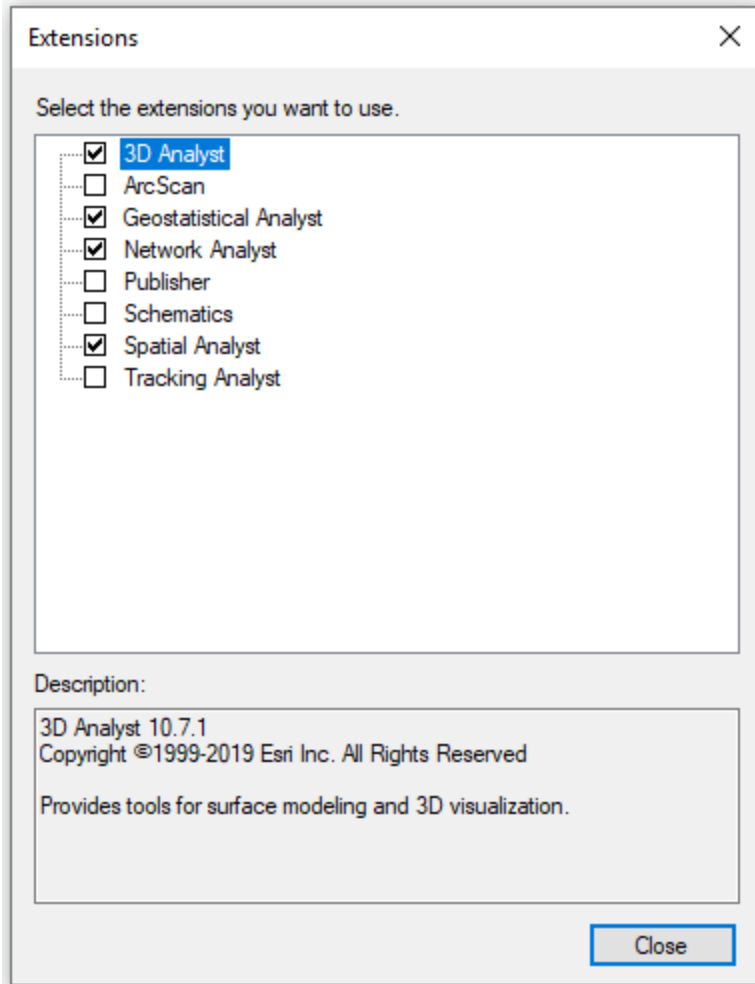
Open ArcMap 10.7.1:



Click OK.

At the top toolbar, click Customize, then Extensions. We are checking to make sure the extensions are enabled.





You should see that all of the extensions are available (lucky you!). If some or all of the extensions are greyed-out, you may need to go back into ArcGIS Administrator and enable them.

Congratulations, you now have ArcGIS Desktop 10.7.1! You may want to create a shortcut to this application for easy access.

Install Guide: <https://desktop.arcgis.com/en/arcmap/10.7/get-started/installation-guide/introduction.htm>

ArcGIS Pro: Quick Start Guide <https://pro.arcgis.com/en/pro-app/get-started/install-and-sign-in-to-arcgis-pro.htm>