

timber flooring industry product buying guide

VERSION 4, 2016

atfa[®]

Australasian timber flooring association

Local professionals, world-class standards

SOLID TIMBER, ENGINEERED, BAMBOO,
CORK & LAMINATE FLOORING
EQUIPMENT / ADHESIVES
COATINGS / ABRASIVES
ACOUSTIC UNDERLAYS
RESTORATION / FILLERS
FLOOR INSURANCE

atfa.com.au



The logo for the Australasian Timber Flooring Association (atfa) is displayed in a bold, orange, lowercase sans-serif font. A registered trademark symbol (®) is positioned to the upper right of the 'a'.

Australasian timber flooring association

Local professionals, world-class standards

The text 'Timber Flooring Industry' is written in a large, white, sans-serif font, centered within a rounded orange rectangular shape. The background of the entire page is a photograph of a room with a light-colored wall, a framed abstract painting, and a wooden floor with a decorative inlay pattern.

Contents

Adhesives

Bostik
Selleys
Mapei
Sika
Soudal Australia

Coatings

Handley Industries
Intergrain Timber Finishes
Polycure
Loba
Whittle Waxes

Equipment

Lagler Australia

Product supplier/distributors

Marques Flooring
Synteko
BJ's Timber Flooring
Sika

Acoustic Underlays

Regupol (Australia) Pty Ltd

Abrasives

Saint-Gobain

Timber flooring suppliers

Embelton Flooring
Sydney Flooring
Mint
Floor Art Parquetry
Preference Floors

Timber flooring producers

Boral Timber
Oakdale Industries
Abbey Timber
Parkside Timber
Australian Timber Company
Coffs Harbour Hardwoods

Restoration

Drymatic
Wood Floor Drying

Fillers

Timbermate Group

Insurance

Floorinsure

Please click on company title to view the page.



Bostik, globally, is synonymous with sealants and adhesives. Since the turn of the 20th century, Bostik has had access to new and innovative technologies, influencing the development of products and practices which are environmentally friendly, sustainable, and in line with changing regulations.

Bostik's commitment to exceed industry expectations provides assurances that our products comply with the most rigorous global standards for sustainability; providing architects, builders and all other customers with the optimum building solutions and allowing for an environmentally friendly tomorrow.

After being acquired by Arkema, Bostik has unprecedented access to a world of innovation and technology. Another reason to Stick with the best.

Bostik provides complete flooring preparation solutions for any job.

Ultraseal Vapour Barrier: Specifically engineered for timber flooring applications, Ultraseal is a one coat system, easy to mix and easier to apply.

Ultraset HP: Designed with sound abatement systems in mind, Ultraset HP is the most specifiable timber flooring adhesive on the market. It's easy to use, easy to clean, and made in Melbourne.

Ultraset SF: As a market leader for more than a decade, Ultraset SF is the most trusted adhesive for beautiful hardwood floors in homes around Australia.

For a full list of Bostik Hardwood products, please visit www.bostik.com

BOSTIK HOTLINE

Smart help
1300 500 799

Bostik Australia.
51 - 71 High Street
Thomastown, VIC 3074
www.bostik.com.au




		
ULTRASEAL ONE COAT VAPOUR BARRIER	ULTRASET HP THE ULTIMATE SOLUTION	
		
ULTRASET SF SOLVENT FREE	ULTRASET S SOLVENT BASED	
		
TIMBERSET LATEX BASED	ULTRASET DX QUICK SETTING CONTROLLED FOAMING	SIMPLE-FIX REPAIR KIT FOR HARDWOOD FLOORS



SURFACE PREPARATION

- **VBS** single coat 100% epoxy moisture vapour barrier

TIMBER FLOOR ADHESIVES

- **Direct Stick** semi rigid foaming PU adhesive to reduce the chance of hollow spots
- **Direct Stick LF** semi rigid PU adhesive for parquetry and external applications
- **Flexistik** elastomeric PU flooring adhesive for prefinished engineered board
- **Timberflex** flexible timber flooring adhesive suitable for most types of solid and engineered timber flooring.

ANCILLARY PRODUCTS

- **Durabond** foaming PU in a bottle to fix hollow spots
- **Aquadhere** PVA adhesive
- **Liquid Nails** construction adhesive
- Roller covers and frames

For a full list of Selleys products visit www.selleys.com.au



For further information please contact
Selleys Australia on 1300 555 205
Selleys New Zealand on 0800 735 539
website www.selleys.com.au

We are happy to assist. Please call us today!

Selleys offers over 75 years experience developing and marketing products within the residential and commercial construction sector. Over the last 10 years Selleys has developed a solid presence within the timber flooring industry with their range of timber floor adhesives, moisture barriers and sealants. Committed to the delivery of quality products, Selleys has a strong focus on innovation, technical advice and customer service ensuring their products are the ideal solution for industry professionals.

Selleys supply the complete timber flooring solution with products ranging from moisture barriers, adhesives and sealants right through to repair kits and accessories.

PURCHASED FROM

- Flooring distributors
- Retail hardware stores

An advertisement for the Timber Flooring System. At the top, the Selleys logo is displayed in a white box on a dark blue background, with the tagline 'IF IT'S SELLEYS IT WORKS®' below it. The main image shows a large, polished wooden floor in a room with large windows. Below the floor, several containers of Selleys products are arranged, including buckets of Direct Stick, Direct Stick LF, Timberflex, Durabond, and Aquadhere. The text 'TIMBER FLOORING SYSTEM' is prominently displayed in white, followed by the subtext 'Discover the range behind beautiful timber floors with Selleys complete timber flooring system.' At the bottom right, the website www.selleys.com.au is listed.

Mapei are a world leader in the supply of solvent-free, innovative timber flooring adhesives and related products to the building industry. Mapei possesses all the technology and can supply a complete range of innovative products adapted to all installation systems, on any scale. Mapei offer high performance products with cutting-edge technology to complete a perfect installation every time.

The perfect combination - Mapei products and your expertise!



or



moisture vapour barrier:

Apply **Planiseal EMB**

- 100% **epoxy** moisture barrier for concrete substrates
- ultimate in moisture transmission reduction
- one coat application system
- 3 coverage rates available for varying moisture vapour emission conditions
- internal use only
- 7 day old concrete over 95% RH

Apply **Eco Prim PU 1K Turbo AU**

- moisture curing and rapid drying polyurethane surface membrane
- ultimate in moisture transmission reduction
- one coat application system
- internal use only
- 28 day old concrete up to 95% RH (one coat)



primer:

Eco Prim T

- All purpose solvent-free neoprene primer to improve the adhesion of levelling compounds on all absorbent and non-absorbent substrates - very low VOC



levelling compound:

Ultraplan

- ultra quick-hardening self-levelling smoothing compound
- ideal for smoothing substrates under timber flooring
- high mechanical strength
- exceptionally smooth finish
- set to light foot traffic in 3 hours
- install flooring after 12 hours
- very low VOC content



or



adhesive:

Ultrabond Eco S955 1K

- ready to use silitated polymer-based adhesive
- isocyanate, solvent & water free
- excellent rib stability
- low expansion and viscosity
- used for all sizes and formats of prefinished, laminated, lamparaquet, parquet timber flooring planks
- suitable substrates: concrete, cementitious screeds, old timber, properly prepared ceramic & marble floors
- suitable over heated screeds

Ultrabond P990 1K

- ready to use, polyurethane, moisture curing adhesive
- solvent free, no unpleasant odour
- excellent rib stability
- low expansion and viscosity
- used for all sizes and formats of wooden flooring including, pre-finished parquetry, laminates, solid wood and planks
- suitable substrates: concrete, cementitious screeds, old timber, properly prepared ceramic & marble floors

Please refer to relevant product data sheets for further information.



For further information please contact
Mapei on 07 3276 5000
 Email sales@mapei.com.au
 Website www.mapei.com.au



Sika Australia is a specialty chemical supplier to the building and construction industry. Part of the global Sika Group, operating in seven target markets: Concrete, Waterproofing, Roofing, Flooring, Sealing and Bonding, Refurbishment and Industry.

Sika provides its customers with solutions that boost the efficiency, durability and aesthetic appeal of buildings, infrastructure facilities, installations and vehicles, through production and use, and thereby makes a substantial contribution to sustainable development.

Sika's objective is to create value with reduced ecological footprint. Sika solutions encompass high quality products in concrete admixtures, speciality mortars, sealants and adhesives, damping, reinforcing materials, and structural strengthening systems.



SikaBond®-T55J – High strength, elastic, polyurethane timber flooring adhesive

SikaBond 58 Wood Floor – Solvent free polyurethane timber floor adhesive.

Sika® Primer MB
– Epoxy primer and moisture regulator for timber flooring systems

Sika® Primer MR Fast – Water based primer and moisture regulator for timber flooring systems



Available from all good timber flooring supply outlets. For a supplier in your area call Sika.



For further information please contact
Sika Australia on 1300 22 33 48
Email au.technical@au.sika.com
website aus.sika.com

We are happy to assist. Please call us today!

Sika®-Acoubond System – Sound insulation system for Timber Flooring.

For use with **SikaLayer®-05**

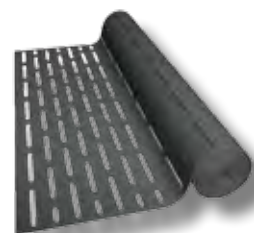


Sikabond T53 – Highstrength flexible polyurethane adhesive for use with the Sika Acoubond system.

Sika® Acoustic Matt – Sound Insulating System for Timber Flooring.

For use with

SikaBond®-T55(J)




GET YOUR FLOORING RIGHT THE FIRST TIME EVERY TIME

3 KEY ADVANTAGES

A Sika flooring installation means no compromise on the final result

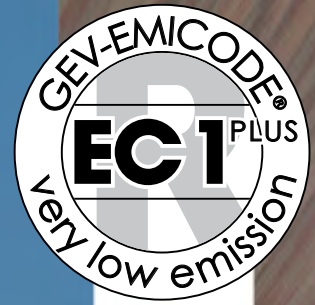
- Proven reliability
- Ease of application
- Sound reduction

1 Full Surface Bonding 2 Acoustic Matt 3 Sika Acoubond System

aus.sika.com
1300 22 33 48
Fax: (02) 9756 0502

BUILDING TRUST 

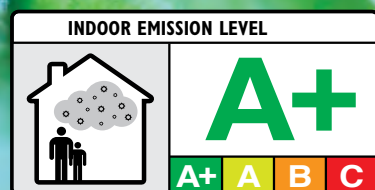
A **Plus** in performance, environment & ease of use



- Faster strength build higher end strength
- Can be walked upon & sanded quicker
- Very low emission value
- Very easy to spread



A d h e s i v e s



SOUDAL

www.soudal.com.au

info@soudal.com.au

Tel. 1300 50 70 11



Beauty meets Durability

Handley Flooring Group has been manufacturing moisture cured coatings since 1977.

We have expertise in the manufacturing of all types of coatings and adhesives for the timber installation and floor sanding markets.

Our products can be purchased from:

- Lager Australia – Melbourne • Planet Timbers – Perth
- Adelaide Floorsanding Supplies – Adelaide
- Synteko – Sydney • Portugal Cork Co – Brisbane

For further information please contact Handley Industries Ltd

Email our friendly sales team for assistance: sales@handleyind.co.nz

Urethane Moisture Cured Coatings

Available in:

- Gloss
- Semi Gloss
- Satin
- Lo Sheen

Aquapol Waterbourne Coatings

Available in:

- Satin
- Lo Sheen
- Matt

Adhesives and Moisture Barriers

- Uni Stick for Solid Installations
- Flexset for Prefinished Installations
- Vapour Stop for Moisture Barrier



www.handleyind.co.nz

Intergrain® enviropo®

Intergrain Enviropo uses advanced clear water based polyurethane technology to bring you a range of highly durable coatings for timber floors. Being low VOC and low odour, Enviropo coatings are a better for applicators and home owners alike, making them a more environmentally responsible choice compared to traditional solvent based finishes.

Enviropo is ideal for residential and commercial projects to help bring out the natural beauty of interior timber floors. Being water based, Enviropo is non-yellowing, helping to preserve the natural colour and appearance of timber for the long term.

Intergrain Enviropo offers a complete system of water based polyurethane coatings.

SEALERS

Timberseal – for oily and tannin rich timbers with no sanding required.

Timber Seal Ultra – general use sealer which sands easily, powdering up when screened.

TOPCOATS

Endure 1 Pack – highly durable single pack coating, ideal for residential projects.

Endure 2 Pack – gives exceptional wear, abrasion and chemical resistance, ideal for high traffic areas and commercial projects.

Endure High Build – unique high film build single pack coating, can be used without a sealer, ideal for residential projects.

SPECIALTY

Wet Edge Extender – can be added to all Enviropo coatings to aid application in hot weather.

Squeaky Clean – specially formulated multi-purpose cleaner for timber floors.

Intergrain UltraGrip – can be added to Enviropo Endure topcoats to meet slip resistance requirements.

Intergrain Enviropo is available through flooring distributors across Australia.

Intergrain®

For further information please contact
Intergrain Timber Finishes on 1800 630 285
website www.intergrain.com.au

For product datasheets visit www.duspec.com.au

We are happy to assist. Please call us today!



**Intergrain®
enviropo®**

High performance timber floor coatings.

Excellent wear resistance – *Enviropo* coatings are used on commercial projects subject to high foot traffic, so you can be confident in their durability.

Enviro responsible – *Enviropo* coatings are water based, so they emit significantly less VOCs (volatile organic compounds) into the atmosphere than traditional solvent based finishes.

Green Building Compliant – VOC level meets the requirements for use on Green Star Buildings, VOC <140g/L.

For more information, call 1800 630 285 or visit www.intergrain.com.au



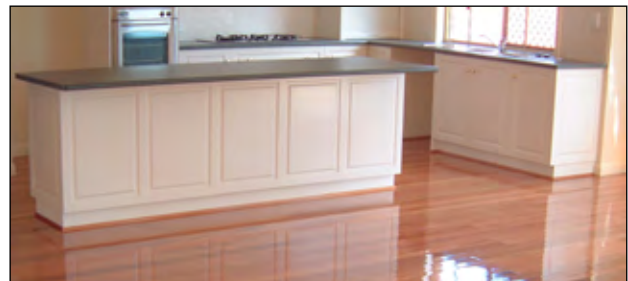
Polycure is the name that professional floor coating tradesmen think of for quality flooring finishes. Our product range includes water based floor coatings, moisture cure, polyurethane and oil based floor coatings, solvents, thinners, additives and floor maintenance products.

Polycure is committed to being a valued supplier to the Timber Flooring Industry by offering innovative products and solutions. We aim to offer a level of technical support that exceeds our customer's expectations, making it easy to deal with us.

Polycure is a division of the Mirotone Group, which is a leading supplier of surface coatings for interior and exterior wood and a variety of other substrates.

Polycure supplies a comprehensive range of coatings including:

- DURAPOL Moisture Cure Coatings
- POLYTHANE Two Pack Polyurethane Coating
- NATUROIL Oil Modified Coatings
- FASTASEAL Solvent Based Sealers
- AQUAPRO Water Based Coatings & Stains
- DURASTAIN Solvent Based Stains
- Slip resistance additives to achieve an R10 or greater rating



For full product details visit www.polycure.com.au



For further information please contact
Polycure on 02 9795 3700
Email marketing@mirotone.com.au
Website www.polycure.com.au

We are happy to assist. Please call us today!



The trusted name in

TIMBER FLOOR COATINGS

- Developed in Australia for in-situ application
- Moisture cure & two-pack polyurethanes to fast dry sealers, oil finishes & water based coatings
- 100% Australian owned & made 

For distributor, product & technical information see www.polycure.com.au



For over 90 years Loba GmbH has been the innovator in the manufacture of timber floor coatings, leading the way with a premium range of reliable Extremely Low VOC **Waterbased Finishes**, timber enhancing **Stains**, and **Natural Oils** and **HardWaxes**. Available in over 50 countries worldwide we at Loba base our success on providing the ultimate in user friendly finishes that provide maximum protection and durability and help you make every feature timber flooring project a masterpiece. The Loba System also includes Australia's first **On site UV Coating System** for Timber Floors, these latest developments have provided both the WOW and the NOW factors for many "heavy use" commercial floors within tight commercial installation schedules and provide ultra extreme hardness via our unique on-site uv curing system. Loba Australasia also supplies the fastest and most effective moisture blocking primer with WAKOL PU280 Primer (1hr dry) and easy clean Accoustic rated Adhesive system MS260 to create "**Connected Systems**" that provide the "complete package" of floor preparation and adhesive to timber floor finishing.

Our Specialist Flooring Product Range Includes:

Lobadur – Extremely Low VOC Waterborne Polyurethane Floor Coatings inc R10 Anti Slip and invisible protection.

LobaCure – On site UV Coating Systems

LobaSol – ZERO VOC Natural Oil and Hard Wax Systems

Loba Procolor – Professional Stains, Colours and Special Effect Systems

LobaCare – Aftercare and Maintenance Products and Accessories



1Hr Dry Super blocking Vapor Barrier and Revolutionary MS260 Accoustic Flooring Adhesive Systems

Decorad On Site UV Finishing



For further information please contact
Loba Australasia on 03 9460 3444
 Brett Scarpella 0419 326 976
 email sales@loba.com.au or brett@loba.com.au
 website www.loba.com.au

We are happy to assist. Please call us today!

Loba.
On Top!

Loba. World Class Finishes
Since 1922



whittle
WAXES

FOR BEAUTIFUL TIMBER, NATURALLY...



Whittle Waxes is dedicated to promoting premium natural oils and waxes for the protection and enhancement of all timber surfaces for over a decade. We are fortunate enough to carry our own diverse brand as well as the Treatex range of products.

Treatex Traditional Hardwax Oil Matte, Satin, Lustre, and Gloss, for the coating of all internal timber, particularly floors, as well as porous surfaces such as stone tiles. Durable clear hardwax finish that is easily maintained, is water repellent. Allows timber to breathe and move seasonally, enhances natural grain and timber colour, tends to be non-yellowing and will not edge bond when applied correctly.



Treatex Colours: Spruce, Grey, Slate, Ebony, Medium Oak, Dark Oak, Antique Oak and Mahogany. All Treatex Colour Tones can be intermixed. As various timbers will take colours differently, we do advise to do a sample before applying to the whole area. Using colourfast, natural pigments to enhance the grain & strengthen the colours. No overlapping, applicator marks.



Whittle Waxes HARDWAX OIL Matte and Classic Natural, durable, water repellent finish for all interior timbers, such as floors, bench-tops and doors as well as stone, marble, engineered and cork floors. Open-pored, moisture regulating efficient in damp rooms such as the bathroom and kitchen. Well suited for children's nurseries, hospitals etc. Replenish able simply with buffing a maintenance coat onto the floor. Potentially this means the floor will never need aggressive sanding again.



Whittle Waxes OBJECT-OIL Also known as Whittle Waxes Repair Wax. A versatile product that can be used as a finish, as well as maintenance of existing interior waxed surfaces. Object Oil Classic can be buffed on to Classic, Lustre, Satin and Gloss hardwax oil finishes to remove minor scratches, leaves the surface looking like new. Use the Object Oil Matte for maintenance of Matte finishes. Also ideal for OBS boards and exotic Timber.



Whittle Waxes FLOOR-CARE Natural treatment for internal wood surfaces. Mopping Additive designed to both clean and maintain floors finished with Whittle Waxes Hardwax Oil without making the surface slippery. Floor Care will prolong the durability of Hardwax Oiled surfaces.



Whittle Waxes PREPARATION CLEANER Application / Treatment: Whittle Waxes Preparation Cleaner is an aggressive cleaner for dirty or worn surfaces in commercial situations. Preparation Cleaner removes contaminants such as dirt, grease and fat leaving the surface ready for refinishing or refreshing.



Whittle Waxes ANTI-SLIP the beauty of Whittle Waxes Anti Slip, is that it's invisible, it is used to reduce slipping for previously treated timber and stone surfaces that are prone to become slippery through dampness, moss, algae and lichen. Tested and highly approved, all products for stairs must be tested by an independent advanced research and technology testing laboratory our Anti-Slip passed with flying colours.



Please visit our website or contact us to find more of our products and always refer to the information sheets before using products.

Kind regards, The Whittle Waxes team



Whittle Waxes, Factory 13, 25 Quanda Road, Coolumb Beach, 4573, QLD 1300
ECOWAX

(1300 326 929) or 07 5471 7963

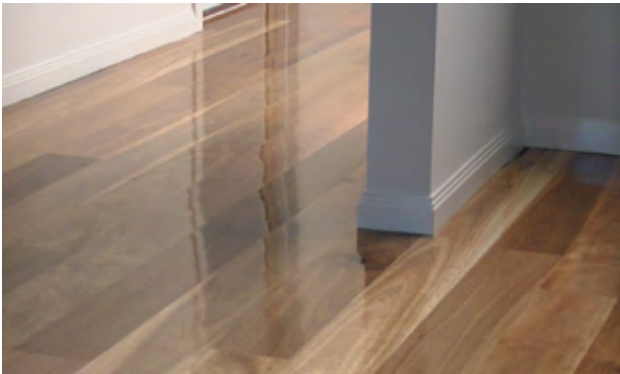
info@whittlewaxes.com.au

www.whittlewaxes.com.au

Lägler Australia

LEADERS IN FLOORSANDING SUPPLIES

Lagler Australia are the leaders in timber floor sanding technology and supplies. As the Australian agent for the legendary German range of Lagler floor sanding machinery since 1989, they have been at the forefront of development and consultation with the timber flooring profession. Lagler Australia's range of coatings, abrasives, adhesives and accessories represents a true point of difference, giving your business a genuine unique edge over your competition. More than a supplier – Lagler are a partner.



LAGLER is the German-crafted range of quality floorsanding machinery, headed by the legendary HUMMEL, the original and best 8" Belt Sander. TRIO – for the perfect finish, with its innovative three-disk planetary system. UNICO – 7" pole motor edger with a unique, ergonomic stand-up operating position. 12" SUPERHUMMEL – For more power.

LAGLER AUSTRALIA'S RANGE OF COATINGS provides you with a genuine edge over the competition:

HANDLEYS solvent-based polyurethane- Exclusive to LAGLER AUSTRALIA. Incredible value, plus genuine high-solids Satin and Lo-Sheen with unique capabilities.

SYNTEKO CLASSIC – Exclusive to LAGLER AUSTRALIA. A smooth Alkyd coating system, fast-drying and only two coats in most cases. Also, SYNTEKO NATURAL – A pure, no-VOC burnishing oil.

Lägler Australia

LEADERS IN FLOORSANDING SUPPLIES

For further information please contact
Lagler Australia on 1800 880 888
Email enquiries@lagler.com.au
website www.lagler.com.au

We are happy to assist. Please call us today!

BONA WATER-BASED – Swedish technology, with strong and reliable single/two-pack coatings available, specified by Australia's leading architects.

LOBA WATER-BASED – German-made with a massive range of single-pack or two pack coatings, stains, carriers, and maintenance coatings which need to be seen to be believed.

TIMBER FLOORING – We stock OXFORD IMPORTS' range of engineered boards in 15 or 21mm, Beautifully milled, dimensionally stable.

Lagler's two Melbourne branches located at:
KNOXFIELD: 28 Parkhurst Drive 03 9887 2344
TULLAMARINE: 15A Allied Drive 03 9330 3330

The LAGLER range of machinery can be purchased from distributors in NSW, Qld, SA, WA and Tas. See our website for details.

Lägler Australia
LEADERS IN FLOORSANDING SUPPLIES

HANDLEYS COATINGS AND ADHESIVES
SYNTEKO COATINGS - LOBA - BONA -
POLYCURE - FEAST WATSON - URETHANE -
TUFFCOAT - SIA ABRASIVES - HERMES
ABRASIVES - OXFORD ENGINEERED
TIMBER FLOORING - ALL ACCESSORIES

 **find us on facebook!**
[facebook.com/lagleroz](https://www.facebook.com/lagleroz)
www.lagler.com.au

Marques Flooring: Your one stop shop for all your flooring needs. Here at Marques Flooring we can supply you with everything you need for all aspects of timber flooring. A family business established in 1986, and 4 x winners of ATFA distributor of the year, you can be assured you will receive the latest in technical information and the greatest in service. As direct wholesalers we not only have a huge range of the most trusted brands but we are also very competitive on price and look forward to assisting you shortly.

We are the proud distributor of the following products:

For the **Installers**

- Tongue and Groove
- Plywood
- Parquetry
- Cork
- Laminate Flooring
- Bamboo Flooring
- Engineered Flooring
- Vinyl
- Acoustic Underlays
- AcoustaCORK
- Full range of Accessories
- Full range of installation tools
- New & Used Machinery
- Machinery Hire

• Machinery Repairs

- Adhesives
- Moisture Barriers
- Finishing trims

For the **Sanders**

- Abrasives
- Water-Based Coatings
- Solvent Based Coatings
- Fillers and Puttys
- Full range of Accessories
- New & Used Machinery
- Machinery Hire
- Machinery Repairs



Facebook.com/marquesflooring

Winner of Australian Distributor of the Year for 2011, 2012, 2014 and 2015



For further information please contact
Marques Flooring on (07) 55 784 665
 Email info@marquesflooring.com.au
 website www.marquesflooring.com.au

We are happy to assist. Please call us today!

New Showroom Opening 2016!

We supply Australia-wide



Product suppliers/distributors

SYNTEKO®

Since the 1950's **Synteko** has specialised in timber floor finishes for the professional floor sander and the most demanding clients. Synteko has provided a comprehensive range of high quality floor finishes and maintenance products for all kinds of timber floors, from traditional solvent based finishes through to natural penetrating oil based coatings to environmentally friendly waterbased finishes.

Synteko's advanced waterbased floor finish technology results in low VOC and when coupled with the Galaxy dust containment system, provide the highest quality material and environmentally friendly floor finishing system. Synteko provides the easy-to-work with timber floor coating system that flooring professionals turn to for beauty, durability, affordability without compromising the health and safety of the professional floor sander and his client.

Primatech®

P250 High Performance Pneumatic Nailer

The Primatech P250 tool is powered by the Primpact valve, the most advanced technology yet delivered by a pneumatic floor fastening tool. Specifically designed for the installation of 19mm flooring, it features a patented user-friendly adjustable base from 26 -16mm flooring which eliminate the use of shims.



Q550 High Performance Pneumatic Nailer

The new Q550 18g nailer designed for 10-16mm overlay flooring with adjustable base plate for perfect positioning of the cleat.



H330 Multiple Hits Manual Nailer

Conventional Single-Hit Hardwood Flooring Manual Nailer 16g.



Q500 Manual Nailer

18g for overlay flooring.

SYNTEKO®

For further information please contact
Synteko® on 02 9406 8100
Email info@synteko.com.au
website www.synteko.com.au

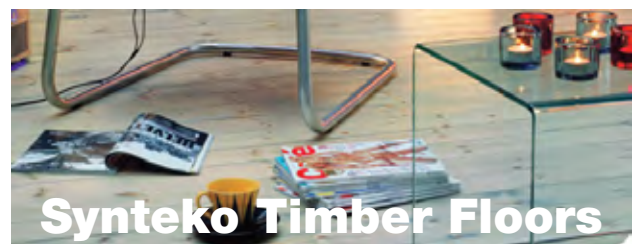
We are happy to assist. Please call us today!



The Galaxy is a prime example of the innovative creativity and engineering that Galaxy consistently delivers. Having the flexibility of using either drum or belt sanding option, allows you the ability to aggressively tackle difficult projects with a drum sander while using a belt sander for fine sanding.



Whether you need to increase production or ensure the finest finish, the Galaxy sanding machines are the perfect tool to ensure the best possible results.



Our staff are always happy to help, so feel free to contact us or drop in on our showroom in Chatswood, Sydney to view all our range floating or engineered timber floors.

Synteko and the Environment ...

Synteko strives to make sure that all possible care is taken to not effect the environment when using our products.



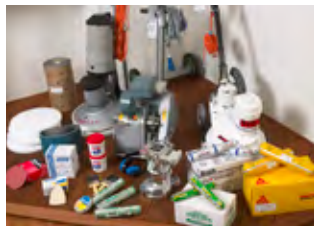
BJ's TIMBER FLOORING

When you invest in timber flooring, you expect a lifetime of stunning good looks and rugged durability. **BJ's Timber Flooring** has been supplying quality timber floors in Perth for almost 50 years. We use premium indigenous species such as Brushbox, Spotted Gum, Jarrah and Blackbutt to provide solid flooring that is a subtle statement of natural sophistication. We select only the highest quality imported timbers such as French Oak, American Oak and Bamboo for flooring Perth homes.

Professional and Personalised Service BJ's Timber Flooring is an independently owned and operated family business and we pride ourselves in being able to provide a high level of quality service to our customers. Established in 1964, the main focus of our operations has been with the trade and prominent builders across Australia. Over the years we've developed strong relationships with suppliers and formed alliances with the country's top mills so that we can offer industry leading expertise and great value for our customers. Being a member of the Australian Timber Flooring Association we have constantly been at the forefront of the latest advances within the industry.

BJ's Timber Flooring are distributors of:

- Solid Tongue & Groove 10, 12, 14, 19mm and 21mm thick timber flooring ranging in widths from 63mm – 210mm
- Big River Engineered 14mm floorboards
- Acoustic Systems – laboratory and field tested for multi storey residential or commercial applications
- Finishes include Bona, Feast Watson, Polycure and Toby Polyurethane
- Moisture barriers include Sika, Selleys, Bostik and Epecrete
- Adhesives include Bostik, Sika, Selleys and construction chemicals
- Sanding machines include American Sanders, Frank, Clarke and Bona
- Cleaning and maintenance products



- Stair nosing, skirting boards, splay bead and reducer strips.
- Sandpaper, nails, power fasteners and fillers complete the range.

BJ's Timber Flooring
Surfaces you will
love for life

To find out more about our commitment to quality and service contact us online or call us on **08 9204 2611** today.



For further information please contact
BJ's Timber Flooring on 08 9204 2611
Email jaydi@bjtf.com.au
website www.bjtf.com.au

We are happy to assist. Please call us today!

Sika Australia is a specialty chemical supplier to the building and construction industry. Part of the global Sika Group, operating in seven target markets: Concrete, Waterproofing, Roofing, Flooring, Sealing and Bonding, Refurbishment and Industry.

Sika provides its customers with solutions that boost the efficiency, durability and aesthetic appeal of buildings, infrastructure facilities, installations and vehicles, through production and use, and thereby makes a substantial contribution to sustainable development.

Sika's objective is to create value with reduced ecological footprint. Sika solutions encompass high quality products in concrete admixtures, speciality mortars, sealants and adhesives, damping, reinforcing materials, and structural strengthening systems.



SikaBond®-T55J – High strength, elastic, polyurethane timber flooring adhesive

SikaBond 58 Wood Floor – Solvent free polyurethane timber floor adhesive.

Sika® Primer MB
– Epoxy primer and moisture regulator for timber flooring systems

Sika® Primer MR Fast – Water based primer and moisture regulator for timber flooring systems



Available from all good timber flooring supply outlets. For a supplier in your area call Sika.



For further information please contact
Sika Australia on 1300 22 33 48
Email au.technical@au.sika.com
website aus.sika.com

We are happy to assist. Please call us today!

Sika®-Acoubond System – Sound insulation system for Timber Flooring.

For use with **SikaLayer®-05**

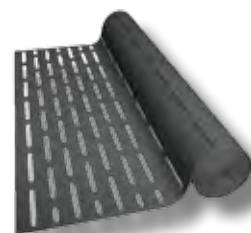


Sikabond T53 – Highstrength flexible polyurethane adhesive for use with the Sika Acoubond system.

Sika® Acoustic Matt – Sound Insulating System for Timber Flooring.

For use with

SikaBond®-T55(J)




GET YOUR FLOORING RIGHT THE FIRST TIME EVERY TIME

3 KEY ADVANTAGES

A Sika flooring installation means no compromise on the final result

- Proven reliability
- Ease of application
- Sound reduction

1 Full Surface Bonding 2 Acoustic Matt 3 Sika Acoubond System

aus.sika.com
1300 22 33 48
Fax: (02) 9756 0502

BUILDING TRUST 



Regupol
Australia



Acoustic Underlays

Regupol® its just feels right

For more than 25 years, Regupol Australia have been proudly servicing the Australian Timber Flooring Industry with the trusted brand of Regupol® soundproofing acoustic underlays. Our products are specifically designed to isolate impact sound noise generated by timber floors.

Now Regupol Australia are proud to present the next revolution in acoustic underlays . . .

acoustic Tiles



Regupol
Australia

For further information please contact
Regupol Australia on 1800 418 909
Email acousticsales@regupol.com.au
Website www.regupol.com.au

Regupol® K225 Acoustic Underlay
now available in **1050mm x 500mm tiles.**

quicker. easier. smarter.

join the acoustic
revolution

Timber Flooring Industry Product Buying Guide

NORTON

SAINT-GOBAIN

RED HEAT

EXTRA
THE MUSCLE BEHIND THE MACHINE

Full Wrap Red Heat Carton Graphics for Easy Stocking and Selection



CLOTH

Features

- 100% patented SG (Seeded Gel)
- Full phenolic resin bond
- Patent pending colour
- Heavy X-weight polyester

Benefits

- Unmatched cut rate and (Seeded Gel) product life with optimum resistance to wear ceramic grain with razor abrasive sharp micro-fracturing capabilities that prevent premature dulling or wearing
- Excellent cutting ability on A/O or ceramic finishes
- Ideal for harder wood species and large jobs where saving time means saving money
- Heat and chip resistant
- Eliminates risk of colour technology transfer with stabilizer assured product colour consistency
- Extremely flexible and backing shock absorbent for extreme conditions
- Atmospherically stable with little or no effect from moisture or heat



RED HEAT CLOTH BELTS

SAP Code	Cap Code	Grit Size	MOQ	Case QTY
200mm x 750mm (7-7/8" x 29-1/2")				
69957345034	R955	24	5	5
69957345033		36		
69957345032		40		
69957345030		60		
69957345029		80		
69957345028		100		
69957345027		120		
250mm x 750mm (9-7/8" x 29-1/2")				
69957346293	R955	36	5	5
69957346294		40		
69957346296		60		
69957346297		80		
69957346298		100		
300mm x 750mm (11-7/8" x 29-1/2")				
69957345041	R955	36	5	5
69957345040		40		
69957345038		60		
69957345037		80		
69957345036		100		

Abrasives

PAPER

Features

- 100% patented SG (Seeded Gel)
- Heavier F-weight paper backing
- Anti-Stat treatment

Benefits

- Exceptionally sharp for fast coating removal
- Less loading and longer life
- Produces finer scratch pattern for a better looking floor
- Stiffer backing cuts more aggressively
- Resists tearing and snagging
- Eliminates static charge on sanding dust for a cleaner finish



RED HEAT EDGER PAPER DISCS

SAP Code	Cap Code	Grit Size	MOQ	Case QTY
180mm x 22mm (7" x 7/8")				
66261055969	H955	24	25	25
66261040286		36		
66261055968		40		
66261040285		60		
66261040284		80		
66261040283		100		
66261055966		120		

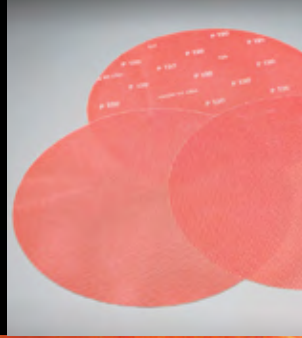
SCREEN

Features

- 100% patented SG (Seeded Gel)
- Inter-woven polyester knit backing
- Full resin bond

Benefits

- Extremely sharp and fast cutting
- 2-3 times the life of silicon carbide
- Produces much finer scratch pattern than silicon carbide
- Perfect on harder wood species
- Increased durability and life
- Excellent grain retention



RED HEAT SCREENMESH DISCS

SAP Code	Cap Code	Grit Size	MOQ	Case QTY
406mm (16" x 0")				
66261026301	Q955	80	10	10
66261026300		100		
66261026299		120		
66261026297		150		
66261071017		180		
66261071018		220		

Saint-Gobain Abrasives Pty Ltd
15 Edgars Road, Thomastown,
Victoria, Australia 3074
Toll Free 1300 007 650

Saint-Gobain Abrasives Ltd
70 Wharf Road,
Te Atatu, NZ 0610
Telephone 09 834 7119

© Saint-Gobain Abrasives Pty Ltd. All rights reserved. Norton and Red Heat are registered trademarks of Saint-Gobain Abrasives

Serving the Trade for 40 Years

Flooring Trade

Embelton operates five flooring trade “one stop shops” across Australia offering a complete range of solid timber, parquetry, coatings, adhesives, abrasives, machinery and flooring accessories.

Flooring Retail

Embelton’s floating floor timber range includes engineered timber in Oak and Australian species, bamboo, laminate and WPC flooring, and is sold throughout flooring retailers across Australia.

Commercial

Embelton is a major supplier of flooring to commercial multi-residential developments across Australia. Recent projects include the Upper West Side, The Emerald Apartments, and Prima Pearl in Melbourne.

Embelton Product Range

- Adhesives
Bostik, Selleys and Sika
- Floor Coatings
Polycure, Bona, Urethane Coatings, Envirpro
- Abrasives
Norton, SIA
- Solid Timber & Parquetry
Overlay, 19mm, Block parquetry
- Floating Floors
Engineered Timber, Bamboo, Laminate, WPC
- Underlays
ImpactaMat Rubber Acoustic Underlay, Hush
Platinum high density foam
- Flooring Accessories
Assorted scotia, beading, trims and other flooring accessories
- Equipment & Machinery
Everything from floor sanding machines to knee pads



Trade Outlets and Warehouses

Melbourne (Coburg)

147 Bakers Road, Coburg VIC 3058 Tel: 1800 889 181

Melbourne (Huntingdale)

1/72 Fenton St, Huntingdale VIC 3166 Tel: 03 9545 6499

Sydney

50 Newton Road, Wetherill Park NSW 2164 Tel: 02 9748 3188

Brisbane

46 Millway St, Kedron QLD 4031 Tel: 07 3359 7100

Perth

21 Pearson Way, Osborne Park WA 6017 Tel: 08 9204 1300



EMBELTON FLOORING

For further information please contact us:

☎ 1800 889 181

✉ customerservice@embelton.com

🌐 embelton.com

SYDNEY FLOORING

OVER 50 YEARS EXPERIENCE IN TIMBER FLOORS

Sydney Flooring, a fully family owned and operated business that specialise in an extensive range of Australian timber flooring products. Whether you're project is big or small, residential or commercial, we supply floor boards and timber decking Australia Wide.



Here are just some of the reasons you should call us for your next flooring project:

- Over 55 years unmatched service and value
- Expert FREE advice and quotes with two huge showrooms
- We update our range regularly
- Bulk buying power with a massive range: Solid timber, wide board, tongue & groove, solid overlay, engineered, bamboo, parquetry (mosaic and block)
- Full Service Options: Options including Supply & Install, Sand & Seal, Supply Only, On site delivery & Sand & Seal only
- Sound reducing Acoustic underlay for apartment Installation
- Floor plans measured and quoted with a quick turn around

Most products kept in stock for a quick delivery.

Join our **trade only** mailing list for exclusive offers. Please contact Steve Carroll. Details below.



For further information please contact
Sydney Flooring on 9755-1899
 email stevec@sydneyflooring.com.au
 website www.sydneyflooring.com.au

We are happy to assist. Please call us today!



Major stockist of Boral and Hurford timbers

Call us for decking timber, plywood 12mm, 15mm and 18mm, hardwood battens, fixings for battens and ply, nails/staples, nail guns, adhesives and plastic and tape.



BORAL



**HURFORD
hardwood**

QUALITY KILN DRIED TIMBER



Loba.
On Top!



Bona



CHIPPING NORTON
02 9755 1899

CHATSWOOD
02 9410 2940





Commercial & Residential Projects

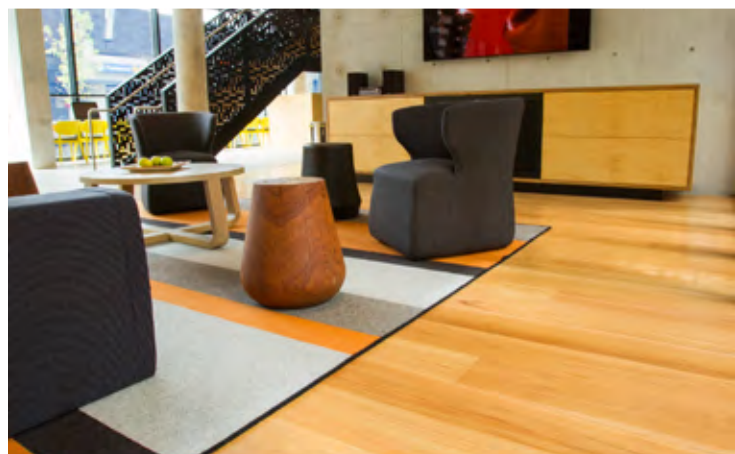
Mint Floors & Shutters supply & install a great range of timber flooring, across Sydney Metro Area, Wollongong and other locations. Laminate floors, to hard wearing Bamboo floors, quality floating timber floors and classic solid timber floors that are sanded and coated in residential or commercial projects.

We also offer a quality range of window coverings including plantation shutters, modern roller blinds, venetian and roman blinds.

Visit our website to know more about our Product Range & check out our Project Gallery.

BEST BRANDS IN THE INDUSTRY FOR:

- Solid Hardwood Floors
- Mint Engineered Oak
- Engineered Floating Floors
- Laminate Floors
- Bamboo Flooring
- Decking Projects
- Carpet
- Shutters & Blinds



Shutters, Blinds & more...



Timber flooring Suppliers

Bulk buy for trades available



FLOORS / SHUTTERS / TIMBER

For further information please contact
Mint Floors & Shutters on (02) 9525 6022
Email caringbah@mintfloors.com.au
Website www.mintfloors.com.au
We sell nationwide.



We are happy to assist. Please call us today!

Artisan[®]
HANDCRAFTED



Looking for a Green Product?

Crafted solely from European Oak sourced from well managed forests of France and Germany with PEFC certification. 75% of our product is from plantation hardwood that has been upcycled.

Looking for Trouble Free and Stable products that lasts a lifetime?

We have the most stable product in the market. Our Product Core is made with Hevea hardwood that is able to maintain dimensional stability in the most extreme conditions.

Our products go through stringent testing at all levels of production to meet and better international standards set by the flooring industry, including the European Standards (EN) for Engineered Flooring and the requirements for Volatile Organic Compounds (VOC).

Our standard profiles are normal T&G or glueless Valinge Loc systems.

Looking for Unique products to match any design and décor?

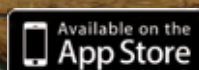
We have more than 3000 SKUs to choose from.

Our Collections range from old Castle Floors, Antiques to the more modern Reactive Stains.

Each of our product models are made unique through a combination of Handscraping, Texturing, Aged, Brushed and Distressing to suit any design requirements.

Diverse species sourced from reliable and safe suppliers all over the world, including Australian Species (Jarrah, Blackbutt, Spotted Gum, Sydney Bluegum and Tasmanian Oak), Temperate wood species (European Oak, White Ash, Hickory/Pecan, Maple, etc), South American, African and Tropical Species (Wenge, Iroko, Doussie, Jatoba, Merbau, Kempas, etc)

info@floorartparquetry.com
www.floorartparquetry.com



info@woodlineparquetry.com
www.woodlineparquetry.com

Timber flooring Suppliers



Preference FLOORS

Timber flooring Suppliers



An extensive range of popular European and proprietary flooring brands now available Australia Wide.

European manufactured Laminate from KronoSwiss, the newly introduced Wicanders Cork Flooring, along with our ever popular Verdura Bamboo and a host of exciting Prestige Oak and engineered timber options.

See for yourself why **Preference Floors** is rapidly becoming one of Australia's favourite resilient flooring suppliers.

The perfect choice for competitively priced, readily available stock.

**AVAILABLE
AUSTRALIA WIDE**



NSW Smithfield ☎ +61 2 9738 1188

VIC Dandenong South ☎ +61 3 9794 5111

QLD Salisbury ☎ +61 7 3875 1688

SA Regency Park ☎ +61 8 8268 8010

WA Inquiries from WA welcome and serviced from SA or VIC

www.preferencefloors.com.au

Verdura

Stonewood

PRESTIGE
OAK FLOORING

KRONOswiss
FLOOR SOLUTIONS

WICANDERS

LEGACY
LUXURY VINYL PLANK

OAK LEAF
WIDE PLANK LAMINATES



Boral Timber is one of the largest manufacturers of Australian hardwood products. Boral Timber has implemented AFS Chain of Custody certification to support responsible and sustainable forest management in Australia. With Australian Forestry Standard (AFS) certified products, the timber used for Boral Timber's hardwood flooring and decking is sourced from legal and sustainably managed resources.

Boral Timber has become one of the largest suppliers of hardwood and softwood timber in Australia with a diverse product range.

Decorative hardwood products

- Boral 19mm and overlay solid strip flooring
- Boral Silkwood engineered hardwood flooring
- Boral parquetry
- Boral decking
- Furniture boards

Structural

- Softwood
- Green and seasoned hardwoods

Boral Timber has access to some of the most sought after native Australian hardwood timber species on the market to suit any interior.

The modern trend towards creating a seamless transition from inside to outside, makes Boral Timber Blackbutt and Spotted Gum the ideal species to use.

Available in internal flooring and outdoor decking, it is perfect for anyone interested in expanding their living area to create an outdoor room.

Blackbutt and Spotted Gum also have a natural fire resistance. Their fire retarding properties make them suitable for use in many bushfire prone areas under Australian Standard AS3959.



For further information on Boral Timber products and for a list of stores and display centres please contact Boral Timber on 1800 818 317 or visit www.boral.com.au/timber



**Boral 14mm overlay
solid strip flooring**



For further information on Boral Timber products and for a list of stores and display centres please contact Boral Timber on 1800 818 317 or visit www.boral.com.au/timber/02

We are happy to assist. Please call us today!

QUALITY:

We provide high Quality Timber products at realistic prices, all with genuine Quality service.

UNIQUE:

The majority of our employees are Tasmanians living with a disAbility. Purchasing timber from Oakdale helps our employees bridge the gap to independence.



Oakdale Display floor. Photo: courtesy of WOW Floors, Mornington, Tas.

LICENSED & CERTIFIED:

Oakdale Industries are Licensed under Fine Timber Tasmania Chain of Custody incorporating: Australian Forestry Standard (AS4707), Programme for Endorsement of Forest Certification (PEFC). This guarantees that the Tasmanian Timber purchased has been legally sourced from sustainably managed forests.

TASMANIAN:

We specialise in Tasmanian Timber species; Tasmanian Oak, Myrtle, Blackheart Sassafras, Blackwood, Celery Top Pine. While our specialties are Tasmanian, we can supply most timber species in a range of flooring, wall lining, decking and joinery options.

✦ T&G FLOORING ✦ PARQUETRY ✦ SKIRTING ✦ ARCHITRAVE ✦ TIMBERCRAFT



ABBEY TIMBER

TIMBER FLOORING AND DECKING SPECIALISTS

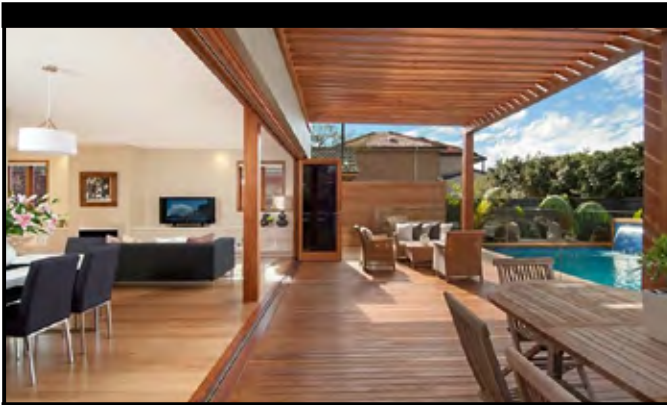


Abbey Timber is an Australian Family Owned Business, trading since 1976. Our showroom and warehouse are located in Milperra, NSW. At Abbey Timber we have one of the largest ranges of Timber Flooring, Decking and all types of external timbers for constructing decks, pergolas, privacy screens or any other DIY Projects. We pride ourselves on the quality of products we sell, and the service we provide. We offer help to tradesman and home renovators with design and technical advice.

Abbey Timber has *everything* you need for your job from start to finish.

Abbey Timber can offer you:

- ◆ Sydney's widest range of Timber Flooring in stock
- ◆ Over 20 species of Hardwood Decking
- ◆ Large range of Hardware & Accessories
- ◆ Trade-Only Prices available
- ◆ Fast & Reliable Deliveries
- ◆ A professional & dedicated team to assist you
- ◆ Monthly Specials & Offers



ABBEY TIMBER
TIMBER FLOORING AND DECKING SPECIALISTS

For further information & enquiries please contact us

Phone: (02) 9774 2944

Fax: (02) 9792 1610

Email: andrew@abbeytimber.com.au

Website: www.abbeytimber.com.au

WE ARE THE TIMBER FLOORING AND DECKING SPECIALISTS



Parkside Products has been produced for Australians by Australians for over 60 years.

The natural durability of the species produced, plus the high manufacturing standards held by Parkside mean the products produced are second to none. Parkside is the largest producer of QLD Spotted Gum products in Australia, and with guaranteed resource for decades to come, you know Parkside will be able to supply all of your hardwood needs. In addition to QLD Spotted Gum, Parkside produce products in Red and Grey Ironbark, and Forest Red species, so you know whatever style you are looking for, Parkside can accommodate your needs.

Parkside Flooring is an end matched, tongue and groove flooring which has been used by generations to complete their most beloved possessions. Today Parkside Flooring is popular due to its warmth, elegance and classic style. Parkside produces QLD Spotted Gum floors, one of the most asked for floors right across Australia.

PARKSIDE Flooring Benefits

- PARKSIDE FLOORING is manufactured in one of the most technologically advanced Hardwood Sawmills in Australia.
- PARKSIDE FLOORING includes a stunning range of tongue and groove solid timber flooring and can be matched to renovated floors or prepared for new floor construction.
- Parkside Timber Floors have an environmental impact which creates five times less carbon emissions than ceramic tiles.
- PARKSIDE FLOORING is easy to care for, once installed and sealed, your hardwood floor will look beautiful for years to come with just routine sweeping and maintenance.
- Quality PARKSIDE FLOORS are excellent for asthmatics and hayfever sufferers as they are not conducive to dust mites and other allergens.

PARKSIDE offer some of the most technologically advanced products in the Hardwood market and these include -

- Bundled 86 x 19 and 136 x 19mm Decking in all species and grades
- Chamfer and Shiplap profiles
- Structural and Decorative F27 Hardwood products
- Internal Joinery and Stair products
- Laminated Hardwood products
 - 90 x 90, 115 x 115 and 140 x 140 Spotted Gum GL18 Posts
- GL21 Spotted Gum Beams
- Green off Sawn Hardwood products
- Building Poles and Piles

PARKSIDE products are readily available from your local timber distributors and merchants.



PARKSIDE
TIMBER



* End Grain Parquetry

Timber flooring producers

Australian Timber Company

The Australian Timber Company is a wholly owned Australian business producing high quality flooring for both commercial projects & homes. Though new to the manufacturing market, we have extensive experience in providing flooring to the retail market, working directly with building companies, architects & designers home renovators and retailers.

As we are a manufacturer as well as a supplier, we are in a unique position to have complete control over the entire manufacturing & supply process. Ownership of our Australian Timber Company mill, on the North New South Wales Coast in Grafton, enables us to manage jobs efficiently, as well as providing the added advantage of dealing with an entirely Australian owned and operated flooring business.

Our strong work ethic ensures that our product is produced to a client's specific requirements & delivered in accordance with agreed timeframes and budgets. The Australian Timber Company can supply through our own channels as well as partnering with other businesses to ensure our product is readily available to our market.

We offer a bespoke flooring design service for projects that require a one of a kind floor in the truest sense.

List of ATC products

Mosaic Parquetry & End Grain Parquetry

All species and patterns available in mosaic and end grain parquetry. In addition to these patterns, we can work with you to create a specific pattern to suit your requirements.

Species	Patterns
Blackbutt	Square on Square - 5/6/7 finger
Sydney Blue Gum	Brickbond
Tallowood	Basketweave
NSW Spotted Gum	Gothic
Jarrah	Herringbone
Tasmanian Oak	Parallel
Brushbox	Haddon hall
European Oak	Custom design

ATC products can be purchased from

Australian Timber Company products can be purchased nationally through Boral Timber, SE Timber, Floorboards Online and Peter Duncan's Timber.

Visit our website (australian timber company.com.au) for further information.

For further information please contact us

on 02 9126 7495

Email sales@australian timber company.com.au

website at australian timber company.com.au

We have products displayed in Sydney and Melbourne.

We are happy to assist. Please call us today!



Beautiful, Natural & Timeless...

We have been producing quality hardwood timber for years and have now introduced a range of timber for joinery use in residential and commercial areas. We also continue to provide Australia and abroad with our finest quality hardwoods for all other applications.

Our focus has always been to supply the best quality hardwood timber for both structural purposes and aesthetic purposes. Timber adds real warmth and beauty to renovations or new developments that require the benefits that only a natural product like hardwood can provide.

Products:

- Tongue & Groove Flooring
- 13mm Overlay Flooring
- Decking
- Cladding
- Joinery
- Stair Treads, Stringers and Risers
- Sawn Hardwoods
- Bridge and Wharf Timbers
- Poles and Piles
- Cross arms

Timber flooring producers



COFFS HARBOUR
HARDWOODS

161 Tallawudjah Creek Road Glenreagh, NSW 2150

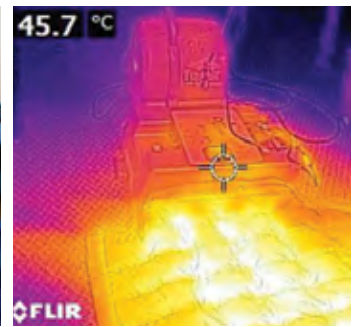
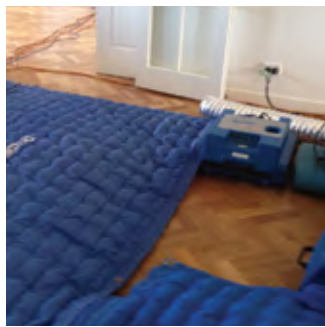
02 6649 2006

www.coffshardwoods.com.au

The award winning **DBK Drymatic system** is a proven successful alternative to replacing water damaged timber floors. The **Drymatic equipment** offers you an alternative solution to dramatically reduce the time in getting your customer back in their home, Traddie free!

With thousands of successfully saved timber floors and buildings around the world the intelligent **Drymatic system** is a risk free drying solution with guaranteed results. You too could provide a full solution from drying to sanding and sealing timber floors.

- Reduce job timeframes
- Easy setup & user friendly equipment
- Low cost with high returns to you
- Portable equipment offering many applications
- Quiet & safe intelligent drying system



Restoration

“ I have come across many wet timber floors that had to be replaced or thrown away. Drymatic has helped me save flooded timber floors back to their original pristine condition. This system has taken my business to a whole new level and direction.

David Dobinson
Fusion Floors (ATFA Member)

“ There are instances where the drying of a water affected floor should be considered. This is particularly so when water damage is localised and with higher value floors, where there can be difficulty in matching the appearance of new flooring to the existing.

David Hayward
ATFA Technical Manager

“ Since 2012 after the installation of Drymatic equipment we have sanded & polished many timber species installed directly to concrete, over ply, chipboard & on battens, parquetry & even trowel glued engineered over concrete. This solution makes restoration fast & easy.

Tim McIntyre
Moreton's Flooring (ATFA Member)



Leading containment system. Reduces clean up time up by creating a contained working chamber.



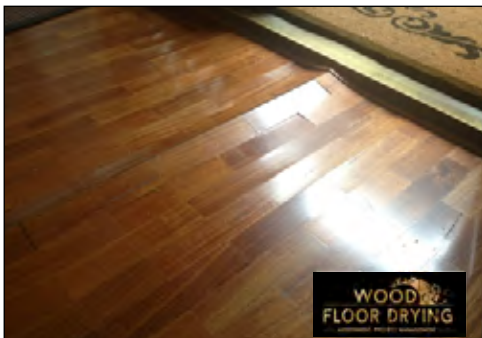
Safe system to remove the solvent & bacteria odours. Compact, quiet & safe odour & bacteria removal system.



Leaders in Moisture Detection. Ultimate moisture meter kit for concrete, timber, gyprock, brick, tiles, laminate & more.



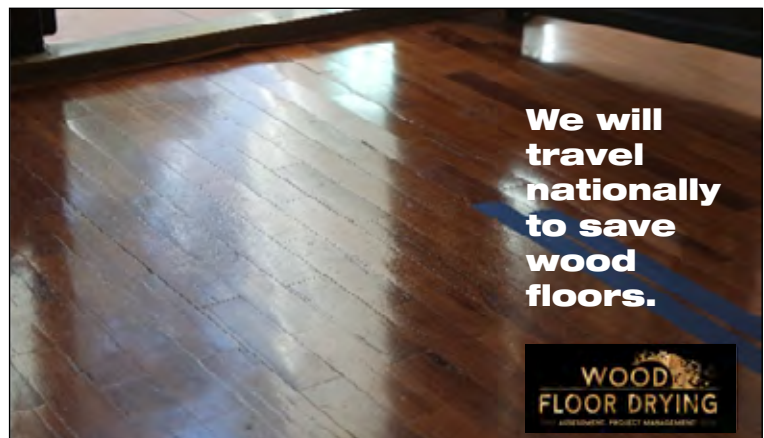
Restoration



We call ourselves “drying engineers” at Wood Floor Drying because we understand how wood floors work. In 2015, we successfully dried over 55 wood floors saving millions of dollars for homeowners and insurers. Yes, not all wood floors can be saved but why not call on our experts so you can give options to your clients? Give us a call today on 041 328 2997 and see how we can help you.



ATFA (951) Level 7 – Vanguard
Master Restorer, MSF, MT, AMRT Specialist
(IICRC 129 586)
Tel 0413 282 997
Email ivi@woodfloordrying.com.au
Website www.woodfloordrying.com.au
P O Box 2309 Templestowe
Lower Victoria 3107



**We will
travel
nationally
to save
wood
floors.**

Timbermate[®]group

Timbermate Products was founded in Australia in 1991. Timbermate began as a small manufacturing company producing a unique waterbased woodfiller, which is solvent and acrylic free. Most products at that time were either latex or solvent based. Today our unique waterbased products are accepted worldwide. Timbermate has developed a reputation for its quality products both in the manufacturing and distribution chain. All products in the Timbermate family are of the highest quality. Timbermate's vision is to produce and distribute the highest quality products. Our policy within Timbermate is that we will not manufacture or distribute any products that are price driven in favour of quality products.

We manufacture and distribute a wide range of ready to use fillers including (Interior Timber, Exterior Timber, Wax Crayon Fillers), Powder Fillers, Expanding Concrete Fillers, Flexible Exterior Fillers, un-du Adhesive Removers, Foam Fillers as well as Graffiti Removers, Rotten Wood Solutions, Silicone Rescue Tapes and Quickties Rubber Straps.

Through our extensive research and development we are able to cater for all facets of the filling market. We are always on hand to offer service and backup support that would be expected from an industry leader.

List Of Products

Fillers

- Timbermate (Ready To Use Interior)
- Earl's MulTFill (Ready To Use Interior\Exterior)
- Earl's Powder Putty (Powder Based Interior\Exterior)
- Concremate (Expanding Concrete Filler)
- Porion (Ready To Use Flexible Exterior Filler)

Wood Repair

- Waxstix (Wax Touch Up Sticks For Timber Surfaces\Flooring)
- Earl's Wood Hardener (Rotten Wood Repair)

Other

- PC Range (Epoxy Putties and Pastes)
- Quickties (Rubber Tie Down Straps)
- Tommy Tape (Silicone Rescue Tape)
- Un-Du (Adhesive Removal)
- Graffiti Removal System

For more information and product videos visit our website!

Timbermate[®]group

For further information please contact

Head Office: (03) 9873 4811

Toll Free 1800 354 811 (Except Mobiles)

or visit www.timbermate.com.au

We have representation in all states and territories and warehousing in four states for prompt dispatch and delivery!



Timbermate

- No VOCs
- No Acrylic, Latex or Solvent
- Accepts ALL stains, coats and colours including water, oil, spirit, epoxies, paints, lacquers etc.
- Unlimited Shelf Life – Reconstitute With Water
- Wood Filler, Grain Filler, Edge Filler and Sanding Sealer all in one!



Earl's MulTFill

- Water Based – NO acrylic or latex.
- Will not shrink, sink, crack or fall out
- Takes almost all known coatings
- Can be used on brick, plasterboard, wood, plywood, concrete and cement sheets

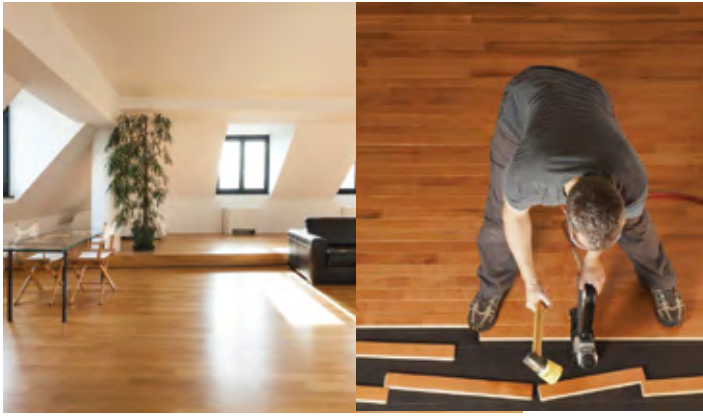


Waxstix

- Can be used for easy, quick repairs to scratched or damaged timber
- Can be either rubbed or burned into the surface
- If burned in, multiple sticks can be mixed for a colour match or grain effect
- Contains NO beeswax, therefore will not leave "halo effect" AND will accept coatings.

**THE INDUSTRIES FINEST
PROFESSIONAL FILLING PRODUCTS**

Our products are available from Bunnings and all reputable flooring supply companies



FloorInsure
the flooring industry insurance broker

Specialist and Commercial Flooring Suppliers

(Food, Health and Acoustic Sectors etc.)

Often when an industry sector begins to specialise in a particular area such as food, health, acoustic, high traffic public areas and the like, many 'main stream' insurers get a little nervous. This may result in them choosing to decline to offer terms of insurance or charge loaded premiums or applying higher excesses. There may be many reasons or excuses for this but usually it may come down to volume of like or similar businesses they hold, presentation of the business activities and products they are to cover or just plain old laziness in wanting to help, due to the specialty factor.

FloorInsure can provide a full service and advice and ensure that our insurers have a complete understanding of the risk at hand. Presented in a way to encourage mutual understanding so as to give a better platform for more reasonable premiums, cover and excess.

Professional Indemnity and Consult and Design coverage that works hand in hand with a Broadform Public Liability policy so that no cracks allow any unfortunate error at claim time.



T 1800 607 204

W www.floorinsure.com.au

(AFSL No - 236784)

Flooring Contractors of ALL Occupations

Join the **FloorInsure** Flooring Contractors Insurance Collective now and you will have access to substantial savings in premiums for all your insurances.

- Public Liability
- Tools and Stock of Trade (Australia Wide - 24/7)
- Personal Sickness and Accident
- Motor Vehicle Insurance
- Flooring Inspectors
- Professional Indemnity

Complete Broadform cover on Public and Products Liability to ensure that you are not left holding the bill for a claim made by a third party against you for property damage or personal injury. **FloorInsure** will also cover your tools and stock for fire, accidental damage and theft anywhere in Australia, 24/7.

We will also ensure that you have a full grasp of what it means to be a contractor in so far as your obligation are concerned with insurance, workers compensation and your potential insurance exposures to your principal and any contract associated within that relationship. Let's face it, do you truly read and fully understand what you are signing when a contract is put in front of you - some do but many don't.



Timber Flooring Industry Product Buying Guide

List your timber flooring project with ATFA

Are you about to get a timber floor installed and/or sanded and polished? Now you can get a quote directly from an ATFA member simply by posting it on the ATFA website. You set the timelines and conditions and ATFA sets a quality standard for quoting members to apply.

So if you're a home owner, insurance company, builder, project company, architect or retailer, this is designed to make life easier for you! Just complete the project template and then expect to hear from ATFA timber flooring technicians wanting to provide a quote for you.

How it works

- ❖ You can list the details of your project at www.atfa.com.au/atfa-list-a-project and ATFA members will in turn contact you to organise a visit to your project site and to complete a quotation for you.
- ❖ You can specify how they contact you, the quotation timelines and which members you accept to undertake a quote (we recommend at least 3 quotations).
- ❖ ATFA will check that you are receiving offers of quotation midway through the open quotation period.
- ❖ ATFA will notify ATFA members as soon as your project is posted.
- ❖ This is a free service from ATFA, designed to benefit both consumers and ATFA members.



We're always here when you need us.

atfa®
Australasian timber flooring association
Local professionals, world-class standards

ABN 16 524 524 226

T 1300 36 1693

E admin@atfa.com.au

W www.atfa.com.au