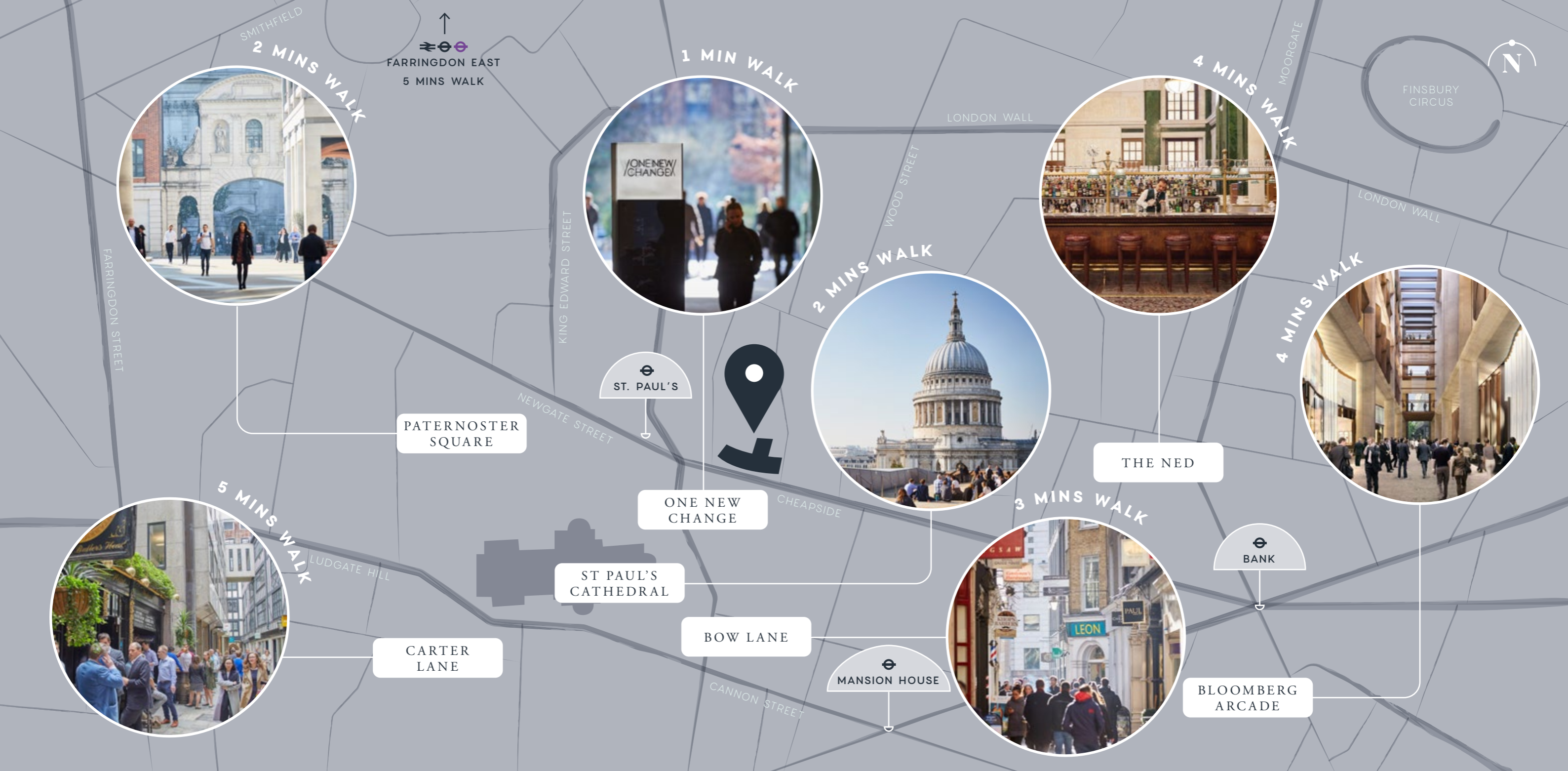


ONE THREE EIGHT
CHEAPSIDE

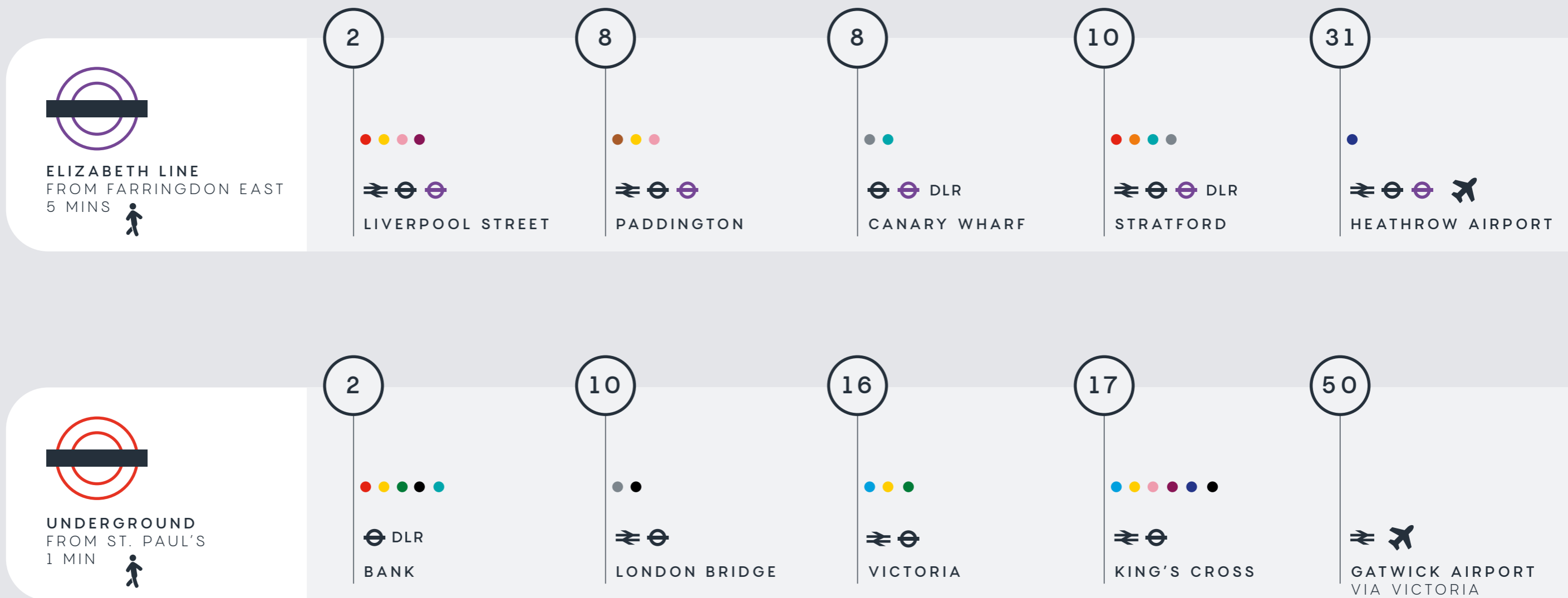
ST PAUL'S





One Three Eight sits on the northern side of Cheapside opposite the contrasting landmarks of the historic St Paul's Cathedral and the contemporary One New Change with its highly successful office, retail and restaurant mix.

TRAVEL TIME IN MINUTES TO THE MAIN TRANSPORT HUBS





MAINSTREAM RETAIL

Cheapside is the main retail hub in The City. One Three Eight is perfectly positioned opposite One New Change which provides a range of shops, bars and restaurants.

The famous Bow Lane with its exclusive retail and established food and beverage offering is just 3 minutes walk.



ONE THREE EIGHT

HOME

LOCATION

CONNECTIVITY

RETAIL

LOCAL OCCUPIERS

BUILDING

SPECIFICATION





BLACK SHEEP COFFEE
125 Wood St, London EC2V 7AN



ST. JOHN'S
26 St John St, London EC1M 4AY



LINO
90 Bartholomew Close, EC1A 7EB



KIN ASIAN STREET FOOD
88 Leather Ln, London EC1N



ST. BARTS BREWERY
66 W Smithfield, London EC1A 9DY

INDEPENDENT RETAIL

Smithfield and Farringdon are a short walk west and are home to a number of emerging independent shops and restaurants, providing some of the most innovative food and drink in Central London. One Three Eight is located in an excellent position to explore these areas and enjoy something different.

theTradeDesk
CHICAGO BOOTH

FARRINGDON EAST
5 MINS WALK

Legal & General
Standard Chartered



ONE THREE EIGHT
CHEAPSIDE

BT
More power to you

Nasdaq

CLIFFORD
CHANCE

London
STOCK EXCHANGE



HERMES
INVESTMENT MANAGEMENT

PENNINGTONS
MANCHES

Milbank

EVERSHEDS
SUTHERLAND

ICBC (Asia)
工銀亞洲

BLACKROCK

TOG
THE OFFICE GROUP

COMMERZBANK

GOODWIN



ST PAUL'S CATHEDRAL

bwin
K&L|GATES

MEDALLIA



BANK

Aberdeen
Bank of Ireland

wework

Fidelity
INTERNATIONAL



MANSION
HOUSE

Bloomberg

worldpay

wework

PROMETRIC



THE BUILDING

Its prominent curved facade was created in the 1950's in a style that is once again at the centre of high design and this external impact has been complimented by a new high-quality entrance, progressive office interiors, up to the minute on-site amenities, a level of services that allows efficient and flexible use.



RECEPTION



ONE THREE EIGHT

HOME

LOCATION

CONNECTIVITY

RETAIL

LOCAL OCCUPIERS

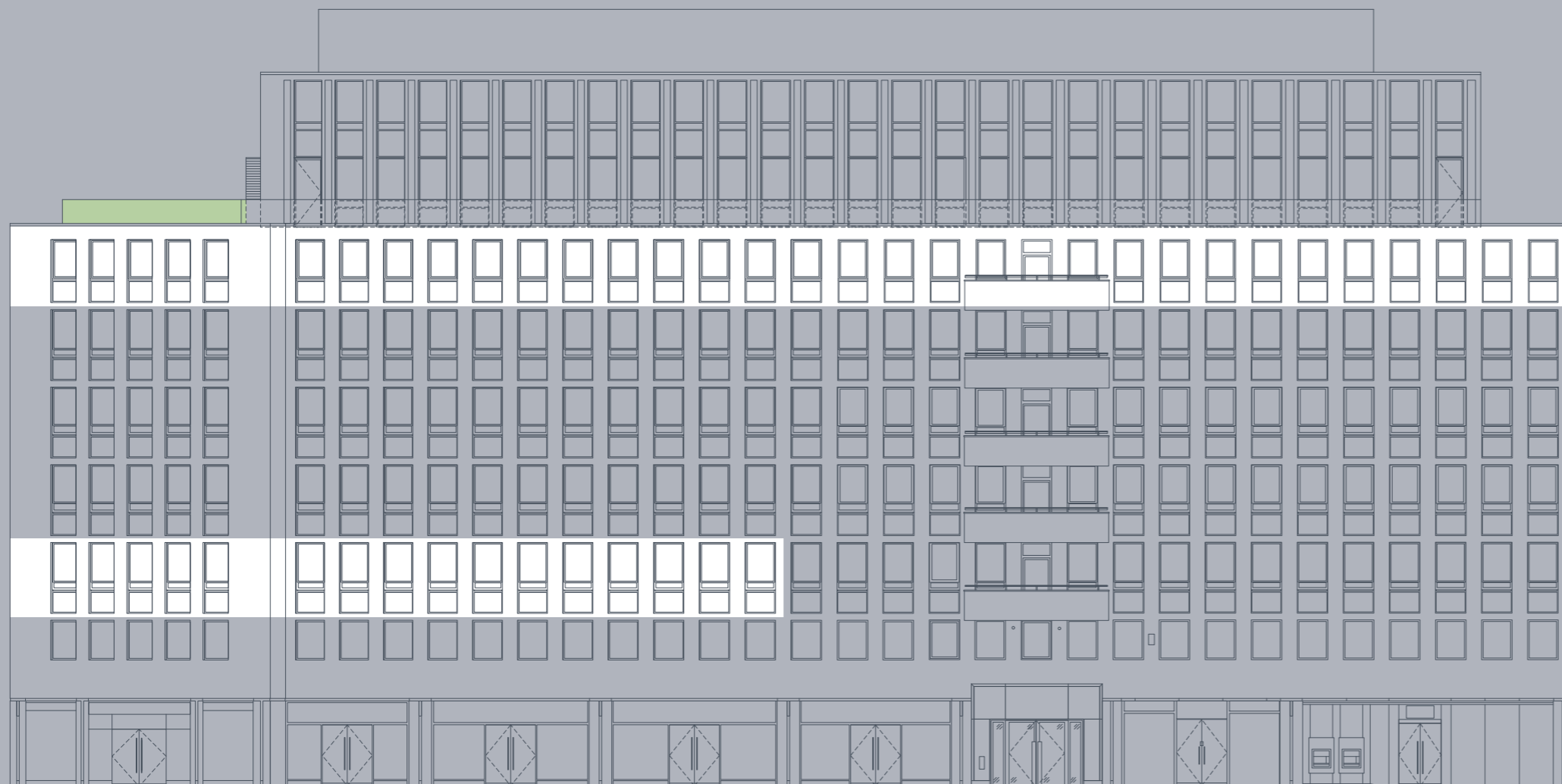
BUILDING

SPECIFICATION

RECEPTION



AREA SCHEDULE

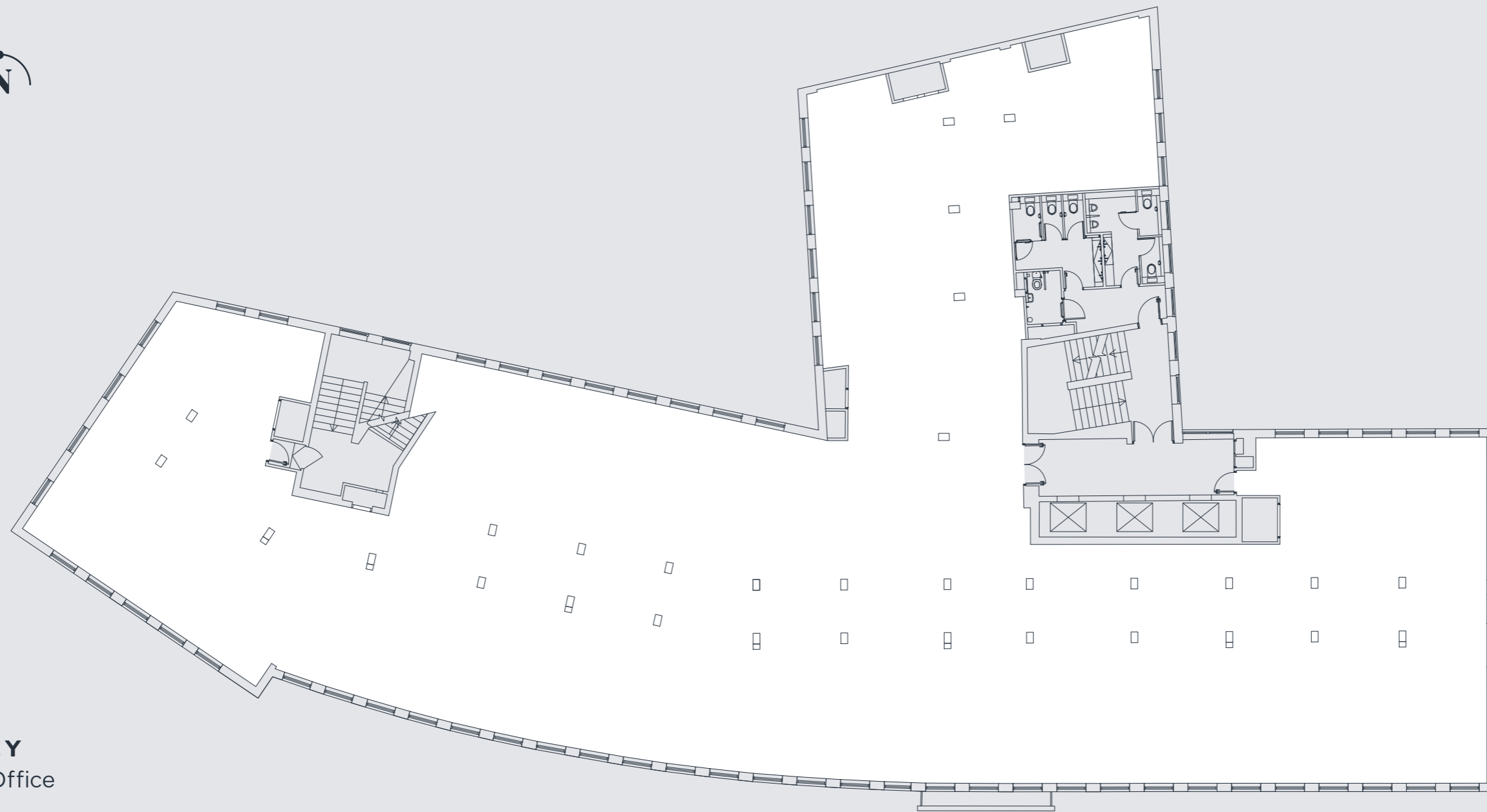


	AVAILABILITY	PROPOSED NIA	
		SQ FT	SQ M
8TH	UNDER OFFER	5,588	519.1
7TH	LET		
6TH	AVAILABLE	9,997	928.7
5TH	LET		
4TH	LET		
3RD	LET		
2ND	PART AVAILABLE	4,895	454.8
1ST	LET		
TOTAL		14,892	1,384.0



SIXTH FLOOR

9,783 SQ FT / 908.9 SQ M



KEY

△ Office

△ Core

CHEAPSIDE

Floor plans not to scale. For indicative purposes only.



SIXTH FLOOR - CORPORATE LAYOUT

9,783 SQ FT / 908.9 SQ M



- KEY**
- △ Office
 - △ Core

CHEAPSIDE

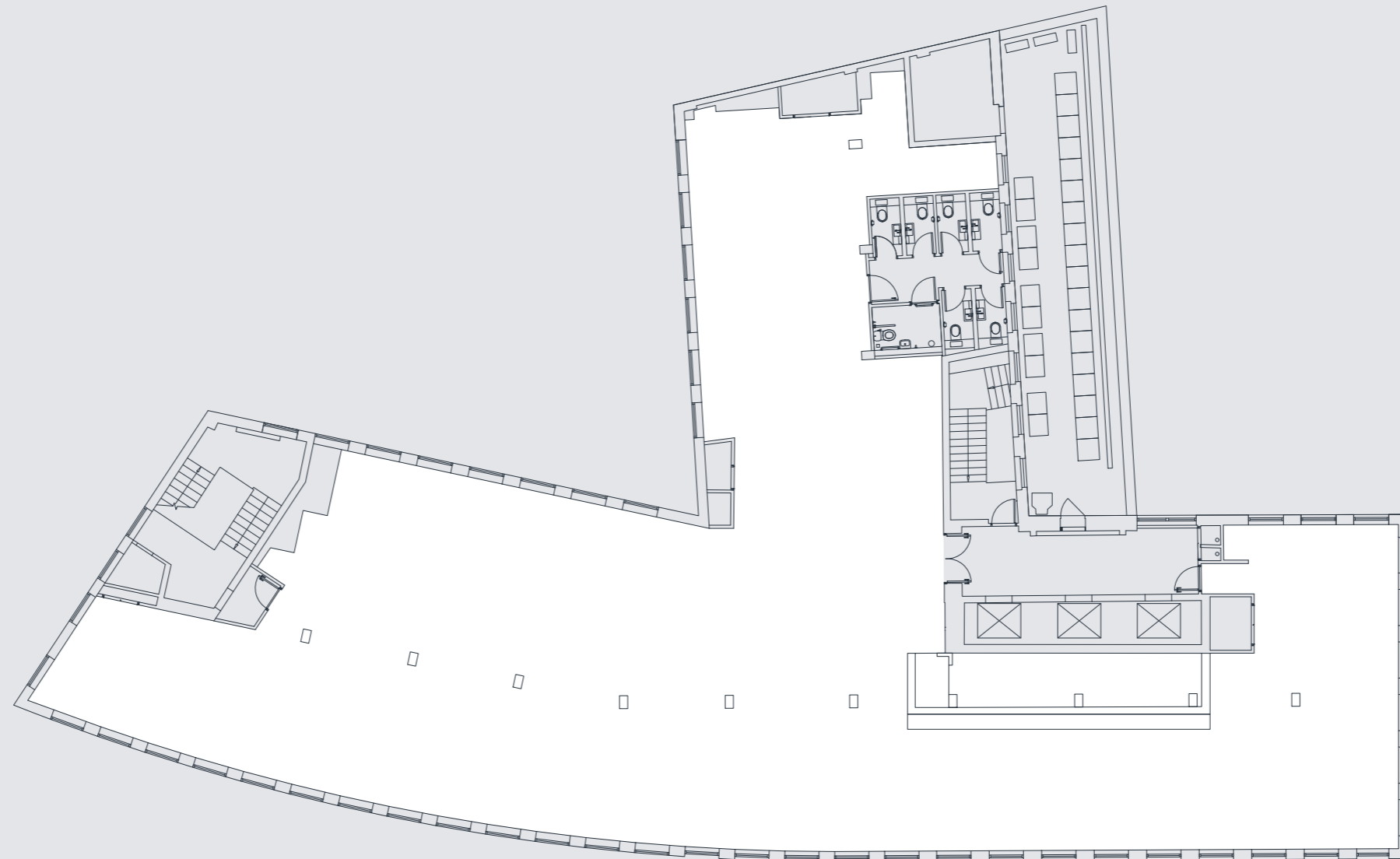
OPEN PLAN WORKSTATIONS	108
RECEPTIONIST	2
TOTAL WORKSTATIONS	110

MEETING ROOMS	ROOMS	SEATS
3 SEATER	1	3
4 SEATER	1	4
10 SEATER	1	10
8 SEATER	3	24
TOTAL	6	41

Floor plans not to scale. For indicative purposes only.

EIGHTH FLOOR

5,579 SQ FT / 518.3 SQ M



KEY

△ Office

△ Core

CHEAPSIDE

Floor plans not to scale. For indicative purposes only.



ONE THREE EIGHT

HOME

LOCATION

CONNECTIVITY

RETAIL

LOCAL OCCUPIERS

BUILDING

SPECIFICATION





ONE THREE EIGHT

HOME

LOCATION

CONNECTIVITY

RETAIL

LOCAL OCCUPIERS

BUILDING

SPECIFICATION

FINISHES

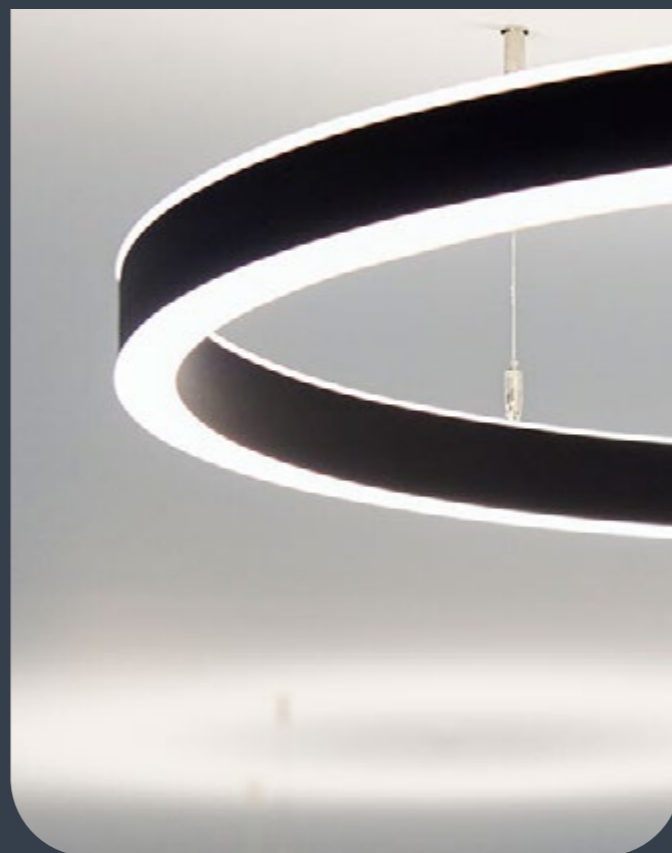
Designed by

**MORROW
LORRAINE**



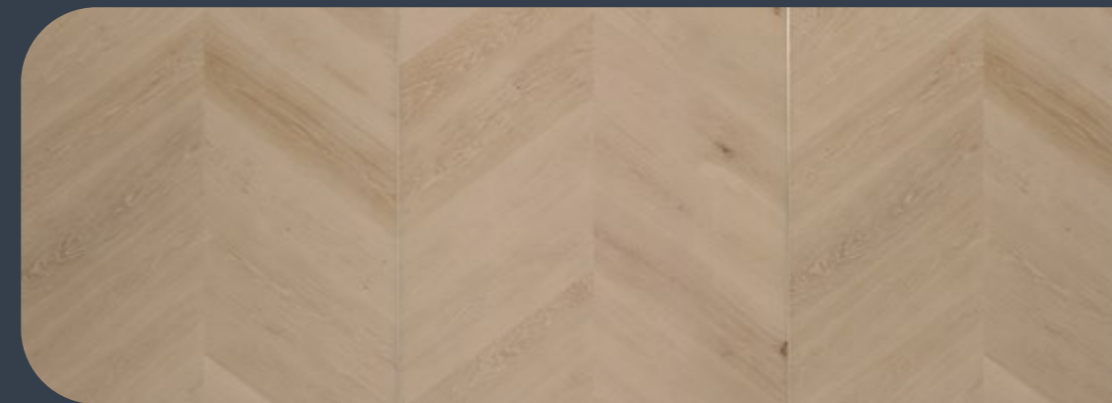
BRONZE STAINLESS STEEL

Metal lift architraves, lift call buttons and lift doors with brass detailing.
Rimex Granex Stainless Steel.



IMPROVED LIGHTING

White ceiling to brighten space.
Continuous LED line of light.
Emergency lighting.
Illuminated signage and controls.
Light at landing when lift arrives.



OAK TIMBER CHEVRONS

Chevron Panels with White Oil.
Finish and Brass Trims.
Chroma. Walling.



KVADRAT

Tonica 2 723 fabric.
Walling.



TERRAZZO

Bianco MSCA SB100H Honed.
Flooring.

SPECIFICATION



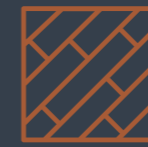
NEW REMODELLED
ENTRANCE AND
RECEPTION AREA



NEW
CONTEMPORARY
CATEGORY A
FINISH



NEW VRF AIR
CONDITIONING



NEW FULLY
ACCESSIBLE RAISED
FLOOR



PART EXPOSED
SERVICES



LED LIGHTING



1,850 SQ FT
PRIVATE TERRACE
OVERLOOKING
ST PAUL'S ON THE
7TH FLOOR



3X PASSENGER
LIFT



70 CYCLE
SPACES



NEW SHOWER
FACILITIES

ONE THREE EIGHT
CHEAPSIDE

ST PAUL'S

A development by



+44 (0)20 7029 3610

MALCOLM TRICE

T: +44 (0)20 7029 3610

E: m.trice@inglebytrice.co.uk

GEORGE HAWORTH

T: +44 (0)20 7029 3625

E: g.haworth@inglebytrice.co.uk



+44 (0)20 7600 5000

DAN ROBERTS

T: +44 (0)20 7710 7958

E: danr@bh2.co.uk

CALLUM STIDSTON-NOTT

T: +44 (0)20 7710 7962

E: callums@bh2.co.uk

MISREPRESENTATION ACT

Ingleby Trice and BH2 give notice to anyone who may read these particulars as follows:

1. These particulars are prepared for the guidance only of prospective purchasers. They are intended to give a fair overall description of the property but are not intended to constitute part of an offer or contract.
2. Any information contained herein (whether in the text, plans or photographs) is given in good faith but should not be relied upon as being a statement or representation of fact.
3. Nothing in these particulars shall be deemed to be a statement that the property is in good condition or otherwise nor that any services or facilities are in good working order.
4. The photographs appearing in this brochure show only certain parts of the property at the time when the photographs were taken. Certain aspects may have changed since the photographs were taken and it should not be assumed that the property remains precisely as displayed in the photographs. Furthermore, no assumptions should be made in respect of parts of the property which are not shown in the photographs.
5. Any areas, measurements or distances referred to herein are approximate only.
6. Where there is reference in these particulars to the fact that alterations have been carried out or that a particular use is made of any part of the property this is not intended to be a statement that any necessary planning, building regulations or other consents have been obtained and these matters must be verified by an intending purchaser.
7. Descriptions of a property are inevitably subjective and the descriptions contained herein are in good faith as an opinion and not by way of statement of fact.
8. Any intending purchaser should satisfy themselves as to the presence of any deleterious materials that may exist, or have been used in the construction of the property.
9. The vendor provides no warranty as to the precise location of the boundaries of the properties.
10. Floor areas are subject to remeasurement December 2019.