

VIBRATION **SOLUTIONS**

3 MISCELLANEOUS
PRODUCTS

VIBCO[®]
VIBRATORS

SOLVING MATERIAL FLOW & COMPACTION SINCE 1962

VIBRATION EQUIPMENT ON THE JOB APPLICATIONS



Above: A Series SVRWS-5500 (page 58-59) railroad car shaker on the job.

Right: A VIBCO Air Cannon (page 66-67) shown in the white circle, helps to maintain an even flow on the conveyor.

Below Right: A vibrating concrete compaction table removes air pockets from the slab making it stronger. (68-69)

Below: VIBCO offers a variety of rollers and compactors (page 70-71) for long lasting pothole repair, and soil or asphalt compaction.



OTHER VIBRATION PRODUCTS SECTION

LUG TYPE

PORTABLE LUG TYPE.....pages 56-57



- ▶ **USL-900/USL-1600 Series** Use with LC-2 Lug Bracket
- ▶ **SVRL-5500,-6500,-8000** Use with LC-1 Lug Bracket
- ▶ **SVRLS-5500,-6500,-8000** Use with LC-1 Lug Bracket
- ▶ **HL-3000** Use with LC-1 Lug Bracket
- ▶ **2PL-900** Use with LC-2 Lug Bracket
- ▶ **CCL-5000** Use with LC-1 Lug Bracket
- ▶ **SVRLS-4000** Use with LC-2 Lug Bracket

RAILROAD CARSHAKERS.....pages 58-60



- ▶ **RB-6500 Series** Latest in Railroad Technology
- ▶ **CCW-5000** The Silent Car Shaker
- ▶ **SVRWS-5500,-6500** Most Powerful
- ▶ **SVRWS-4000** With Stik-It™ Mount
- ▶ **VMW Electric** With Wedge Bracket
- ▶ **VMC Electric** With Clamp Bracket
- ▶ **PC-3500 Big Buster**
- ▶ **44-3 Pneumatic Piston**

MOUNTING BRACKETS / CONTROL BOXES.....pages 61-63



- ▶ Over 750 mounting brackets available
- ▶ Pipe Brackets, Railroad car style brackets, wall systems, more
- ▶ Fool-Proof engineered mounting systems save time, money and effort!

STIK-IT™ VACUUM MOUNT.....pages 64-65



- ▶ **TRAILA™** Vibrator Mount
- ▶ **STKIT908** For: VS-510; SCR-300 & 400; 2P-75,100 & 150
- ▶ **STKIT906** For: VS-380; V-380; 50-1-1/2S; 50-2S-SP; US-450T & 700; SVRFS-4000AL
- ▶ **STKIT903** For: MLT-190, 250, 320; BVS-130, 160, 190, 250, 320; V-130, 190, 250, 320; VS-130, 160, 190, 250, 32; 50-1S, 50-1-1/4S; BV-130, 190, 250, 32; SPR-20, 21, 40, 60, 80; SCR-50, 100; SPRT-21, 60, 80

AIR CANNONS.....pages 66-67



- ▶ **ABS-4-10EV Series** 52-1/2" Tall
- ▶ **ABS-4-5EV Series** 48" Tall
- ▶ **ABS-4-4EV Series** 36" Tall
- ▶ **ABS-4-2EV Series** 32" Tall
- ▶ **ABS-2-2EV Series** 24" Tall
- ▶ **ABS-2EV Series** 15" Tall
- ▶ **ABS-1-1/2 Series** 28-5/8" Tall
- ▶ **ABS-1 Series** 5-9/16" Tall

VIBRATION TABLES.....pages 68-69



- ▶ Test Tables
 - ▶ Grid Top Tables
 - ▶ Compaction Tables
 - ▶ Flat Platform Tables
 - ▶ Low Profile Packers
- VIBCO will build a Vibrating Table solution to meet your needs. Our affordable, effective and durable vibration tables suit any industrial or construction application like settling material for shipping & consolidating concrete. We have the shortest vibrating table lead times on the market!

CONSTRUCTION DIVISION.....pages 70-71



- ▶ Internal Concrete
 - ▶ Plate Compactors
 - ▶ Rollers
- Ideal for O.E.M. equipment
For Asphalt and Soil
For Asphalt and Soil

SELECTION DATA.....pages 72-77

VIBCO PORTABLE LUG-TYPE ELECTRIC, PNEUMATIC, HYDRAULIC

SVRL & SVRLS
-5500, -6500, -8000
(Pneumatic, uses LC-1)

CCL-5000
(Pneumatic,
uses LC-1)

HL-3000
(Hydraulic,
uses LC-1)

7-1/4"
184mm



**LC-1
LUG BRACKET**

Technical Data

Electric Models	Weight		Power	1 Phase			3 Phases			Power	Centrifugal Force - lbs./N Adjustable						Sound*	Vib. /min.
	lbs.	kg.		Amperes at Volt**			h.p.	Centrifugal Force - lbs./N Adjustable			Min.	Norm		Max.				
			Phase	115/230	230/460	575		lbs.	Newtons	lbs.		Newtons	lbs.	Newtons	dB	VPM		
2PL-900	30	13.6	1 & 3	3/1.5	1/0.5	0.4	1/3	15	665	300	1,335	450	2,000	62	3,600			
2PL-1600	48	21.8	1 & 3	5/2.5	1.2/0.6	0.5	1/2	110	490	450	2,000	900	4,005	64	3,600			
USL-900	18	8.2	1	4.5/2.3	—	—	—	600	2,670	900	4,005	1100	4,895	85	10,000			
USL-1600	20	9.1	1	5.0/2.5	—	—	—	1,100	4,895	1,600	7,120	1800	8,010	85	9,000			

* Decibel from A scale at 1 meter
** Most vibrators available in both 50 & 60 Cycles, 115 to 575 volt

NOTE: • Data obtained on laboratory test block • Data subject to design changes
• Frequency & force will decrease on less rigid mount.

Pneumatic Models	Weight		80 PSI (5.5 Bar)			90 PSI (6.2 Bar)			100 PSI (6.9 Bar)			Cubic ft. per min.	Sound
	lbs.	kg.	Vibration per min.	Centrifugal Force		Vibration per min.	Centrifugal Force		Vibration per min.	Centrifugal Force			
			VPM	lbs.	Newtons	VPM	lbs.	Newtons	VPM	lbs.	Newtons	CFM	dB
SVRLS-4000	22	10.4	11,500	3,600	16,000	12,500	4,000	17,800	13,500	4,400	19,500	40	78
SVRLS-5500	43	19.5	9,000	4,950	22,000	10,000	5,500	24,500	10,500	6,100	27,100	56	82
SVRLS-6500	45	20.4	8,800	5,575	24,800	9,500	6,500	28,900	10,000	7,200	32,000	58	80
SVRLS-8000	47	21.3	8,500	7,625	33,900	8,700	8,000	35,600	9,500	9,550	42,500	62	82
SVRL-5500	37	16.8	9,000	4,950	22,000	10,000	5,500	24,500	10,500	6,100	27,100	56	98
SVRL-6500	39	17.8	8,800	5,575	24,800	9,500	6,500	28,900	10,000	7,200	32,000	60	98
SVRL-8000	41	18.6	8,500	7,625	33,900	8,700	8,000	35,600	9,500	9,550	42,500	63	98

See page 30-31 for more information

Pneumatic Models	Weight		60 PSI (5.5 Bar)				80 PSI (5.5 Bar)				Sound
	lbs.	kg.	Vibration per min.	Cubic ft. per min.	Centrifugal Force		Vibration per min.	Cubic ft. per min.	Centrifugal Force		
			VPM	CFM Air	lbs.	Newtons	VPM	CFM Air	lbs.	Newtons	dB
CCL-2000	23	10.5	4,000	30	890	3,960	6,000	40	2,000	8,895	78
CCL-5000	48	21.8	4,000	35	2,220	9,875	6,000	50	5,000	22,240	75
CCL-7000	48	21.8	5,000	40	3,380	15,035	7,200	50	7,000	31,135	78

See page 12-13 for more information

Hydraulic Model	Weight		Avg. PSI (max 3000 PSI)	Vibration per Min. VPM	Gallons per Min. GPM (max.)	Force		Sound dB
	lbs.	kg.				lbs.	Newtons	
HL-3000	39	17.7	1,000	5,000	3.2	3,400	15,125	76

See page 34-35 for more information

MODELS 2PL, SVRL, CC FIT BRACKETS LC-1 OR LC-2

2PL-900
(Electric, uses LC-2)
2PL-1600
(Electric, uses LC-1)



USL-900
USL-1600
(Electric, uses LC-2)



SVRLS-4000
(Pneumatic, uses LC-2)



**LC-2
LUG BRACKET**

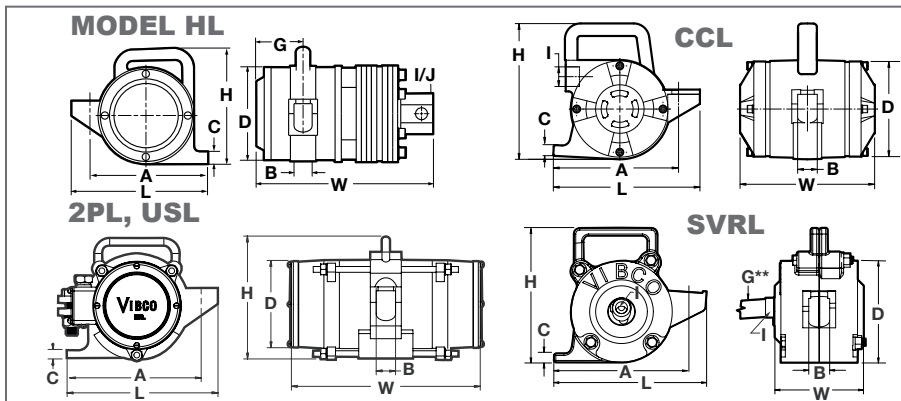


LUG TYPE

VIBCO's lug-type portable vibrator fits either the LC-1 or LC-2 lug brackets. They assure you of 100% vibration transfer and are an easy and inexpensive way to utilize one vibrator for many applications, from bin to bin, tote box to

tote box, or concrete form to concrete form. Vibco offers a choice of electric, pneumatic, or hydraulic operation.

Right: A wall of VIBCO SVR High Frequency Vibrators hang on wall form with low slump concrete being poured.



Dimensions

Model	L		W		H		A		B*		C x F†		D		G**		Inlet I NPT / SAE	Bracket
	in.	mm	in.	mm	in.	mm	in.	mm	in.	mm	in.	mm	in.	mm	in.	mm		
2PL-900	7	178	12	305	7	178	5-1/2	140	1	25	1/2 x 1-1/4	13 x 32	5-1/2	140	—	—	—	LC-2
2PL-1600	9-1/2	241	11-5/8	295	8-7/8	225	6-5/8	168	1	25	3/4 x 1-1/4	19 x 32	6-3/4	171	—	—	—	LC-1
USL-900	7-1/2	190	11	279	7-1/4	184	4-3/4	121	3/4	19	1/2 x 1-1/4	13 x 32	4-3/4	121	—	—	—	LC-2
USL-1600	7-7/8	200	11	279	7-1/4	184	4-3/4	121	3/4	19	1/2 x 1-1/4	13 x 32	4-3/4	121	—	—	—	LC-2
SVRLS-4000	7	178	8	203	7-1/2	190	6	152	3/4	19	1/2 x 1-1/4	13 x 32	5	127	3/4	19	5/8-18 SAE	LC-2
SVRLS-5500, 6500 & 8000	9-1/2	241	8-1/16	205	9-1/4	235	7-3/4	197	1	25	3/4 x 1-1/4	19 x 32	6-3/8	162	3/4	19	5/8-18 SAE	LC-1
SVRL-5500, 6500 & 8000	9-1/2	241	6-1/8	156	9-1/4	235	8	203	1	25	3/4 x 1-1/4	19 x 32	6-1/2	165	3/4	19	5/8-18 SAE	LC-1
CCL-2000	7	178	8-1/16	205	7-1/4	184	6	152	3/4	19	3/8 x 1-1/4	10 x 32	5-1/16	129	—	—	3/4 NPT	LC-2
CCL-5000,7000	9-3/8	238	8-5/8	219	8-5/8	219	8	203	1	25	3/4 x 1-1/4	19 x 32	6-1/16	154	—	—	1 NPT	LC-1
HL-3000	9-1/2	241	11-1/4	286	9-1/4	235	7-3/4	197	1	25	3/4 x 1-1/4	19 x 32	6-1/4	159	3-1/8	79	3/4-16 SAE (inlet & outlet)	LC-1

* Max. mounting bolt diameter † C= Foot Height, F=Foot width
** Hose diameter for SVR units (3/4" hose with 5/8-18 SAE threads supplied by VIBCO)

NOTE: • Material, Dimensions & Data subject to change without notice
• Dimensions ±1/16"

VIBCO'S RAILROAD CARSHAKERS BRACKETS AVAILABLE

WEDGE TYPE MODELS



MOST POPULAR PNEUMATIC SVRWS-5500, SVRWS-6500 (see page 30-31)

These High Frequency pneumatic units are the best choice of railroad carshakers for materials with moisture content, they will move the most stubborn materials. The patented wear-plates cut maintenance costs by 75%.



SILENT PNEUMATIC CCW-5000 (see page 12-13)

The "SILENT" Railroad Carshaker produces 70-75 dB (no more noise than an electric motor). The CCW-5000 uses the patented turbine gear to produce up to 5000 lbs force. It comes with a Quick-Disconnect hose fitting and a hold down bracket.

PNEUMATIC MODEL 44-3 & 44-3L PISTON (see page 28-29)

Available in powerful 3" and 4" bore sizes to help evacuate hopper cars quickly. The light weight, ease of portability, low cost and high forces of Model 44 carshaker has proven highly desirable for the small to medium consumer.



ELECTRIC MODEL VMW ON WEDGE BRACKET (see page 42-45)

The VIBCO Model VMW is made up of a 2P or 4P Vibrator with a Wedge style bracket. These heavy duty electric vibrators, Model 2P (3600 RPM) and Model 4P (1800 RPM) produce high torque and amplitude.

All models have overload protection and adjustable eccentrics providing flexibility to meet changes in material content or density.



HYDRAULIC MODEL HLF-3500 WEDGE BRACKET (see page 48-50)

The small version of the Big Buster is a small and powerful high speed 9000 RPM vibrator which offers an inexpensive solution to many material handling problems. Creates 3500 lbs. force with 4000 vibrations per minute.

CLAMP-ON MODELS

PNEUMATIC MODEL PC-3500 BIG BUSTER (see page 34-35)

"Big Buster" carshakers (*below*), in Pneumatic or Hydraulic models, provide high force at low frequency, ideal for moving coarse materials. VIBCO's patented vibration isolation couplings stop vibration from reaching the drive motor, insuring the use of it's full life and eliminating premature, costly drive motor repairs and costly down time.



ELECTRIC MODEL VMC ON CLAMP BRACKET (see page 42-45)

2P-1700 and 2P-2500 are supplied with clamp-on brackets and are three phase units. All models have overload protection and adjustable eccentrics providing flexibility to meet changes in material content or density.



PNEUMATIC LUG STYLE MODEL SVRL-5500 ON CLAMP BRACKET (see page 56-57)

VIBCO's high frequency, high force vibrators can be mounted in many locations. Portability, speed and force adjustability (by regulating air supply) makes these units the most versatile on the market.

STIK-IT™ BRACKETS

PNEUMATIC SVRFS-4000AL with Stik-It™ Mount (see page 30-31, 56-57)

- EASY to install in the field!
- QUICK installation
- PORTABLE moves easily from car to car
- SECURE suction, best vibration transfer

The suction cup can be attached to an exact spot on the Railroad Car Hopper where material hangs up, and apply all the force that is needed to get it moving. Also ideal for cleaning out any material stuck in a hopper.



Ask for
Catalog 9126 Ask for FL-P-RB-32919

RAILROAD CARSHAKERS

PNEUMATIC, ELECTRIC & HYDRAULIC

SPECIAL PRODUCTS

PNEUMATIC MODEL BVST-4400 WEDGE BRACKET (see page 8)

These have been the work horses for a long time and are the most powerful of the Railroad Carshakers. They will move the most stubborn materials.



PNEUMATIC CCW-2500 HOBO (see page 12-13)

A common misconception is free flowing material like grain or plastic pellets does not require vibration. The Hobo helps clean out the corners in the dead flow zones of the railcar. For example: a product cost 44 cents a pound and you unload 2 railcars a week. If you leave 100 pounds in a hopper, a two hopper railcar gives you a loss of \$88. The pay back for a HOB0 is under two months – an incredible return on investment. A two month ROI is easily funded by any company.

The Hobo Heavy Duty Pneumatic Turbine Vibrator is the lightest weight railroad car shaker available at just 24 lbs! It works great for railcar clean-out with high force output and virtually silent operation. HOB0's Patented design does not require lubrication and is virtually maintenance free.



Shown with optional hold down bracket for securing wedge into female pocket

Unload Railroad Hopper Cars Faster, Cleaner with Less Labor . . . SIMPLE RULES FOR SELECTING YOUR CARSHAKER



MATERIAL IN RAILROAD CAR (for chart below)

GROUP 1	Cement, flour, carbon black, bone black, aluminum shot.
GROUP 2	“After” Vibration (for cleaning car) Cement, sugar, flour, chemical salts (no moisture), corn grits, arsenic, barley hops, carbon black, borax, fluoride, gypsum, sodic sulphate, peanuts, sodium nitrate, semolina, trisodium phosphate and similar materials.
GROUP 3	Salts, molasses, iron ore, malt (if sticky) potash, bauxite, calcium carbide, crushed marble, and similar materials.
GROUP 4	Sand, stone, asphalt, stone dust, fly-ash, salt, coal, clay-lime-lumps, and similar materials.

RAIL CAR

	CAR SHAKER MODEL	Consisting of		Electric* Power	Vibrator Weight Only		Material in Railroad Car (see chart above)	dB**
		Vibrator	Bracket†		lbs.	kg.		
ELECTRIC	VMC-450	2P-450***	Clamp-On	1 & 3 Phase	50	22.7	Group 1	70
	VMC-1000	4P-1000‡	Clamp-On	1 & 3 Phase	52	23.6	Group 1	70
	VMW-450	2P-450	Wedge	1 & 3 Phase	48	21.8	Group 1	70
	VMW-700, 1000	4P-700, 4P-1000	Wedge	1 & 3 Phase	50	22.7	Group 1	70
	VMC-800	2P-800	Clamp-On	1 & 3 Phase	85	35.6	Group 2	75
	VMW-800	2P-800	Wedge	1 & 3 Phase	75	34.0	Group 2	75
	VMC-1700	2P-1700	Clamp-On	3 Phase	90	40.8	Group 3	78
	VMC-2500	2P-2500	Clamp-On	3 Phase	98	44.5	Group 4	80
PNEUMATIC	Model	Vibrator	Bracket†	CFM/80 PSI	Vibrator Wt.		Material in Rail Car	dB**
	CCW-2500 (Hobo)	Pneumatic Turbine	Wedge	30	30	13.6	Group 1-2	72-75
	CCW-5000	Pneumatic Turbine	Wedge	35	48	21.8	Group 1-2	72-75
	44-3	3" Piston	Wedge	30	50	22.7	Group 1-2	93-95
	PFW-1500	PF-1500	Wedge	21	55	24.9	Group 1-2	80-85
	PFC-1500	PF-1500	Clamp-on	21	63	28.6	Group 1-2	80-85
	RB-5000-CCW	Pneumatic Turbine	Air Wedge	35	48	21.8	Group 1-2	72-75
	CCW-2500 (Hobo)	Pneumatic Turbine	Wedge	30	30	13.6	Group 2-3	72-75
	CCW-5000	Pneumatic Turbine	Wedge	50	48	21.8	Group 2-3	72-75
	PFW-1500	High Frequency	Wedge	50	48	21.8	Group 2-3	78-85
	44-3L	3" L-Piston	Wedge	50	60	27.2	Group 2-3	90-95
	BVST-4400	Pneumatic Turbine	Wedge	30	22	10.0	Group 2-3	92
	PC-3500	PC-3500	Clamp-on	39	71	32.2	Group 2-3	90-95
	RB-6500-SVR	SVRS-Silent High Freq.	Air Wedge	50	48	21.8	Group 3-4	78-85
	SVRFS-4000AL	SVRS-Silent High Freq.	Stik-It 906	40	23	10.4	Group 3-4	78-85
	SVRWS-5500 & 6500	SVRS-Silent High Freq.	Wedge	50	48	21.8	Group 3-4	78-85
PC-3500	PC-3500	Clamp-on	39	71	32.2	Group 3-4	80-85	
SVRC-5500, 6500 & 8000	SVR High Frequency	Clamp-on	55	58	26.3	Group 3-4	93-90	

* See page 61-63 for bracket weights in lbs. shown in parenthesis.
 † Use 1 Phase brackets for both 1 & 3 Phase Units.
 ** Decibel at 1 meter on A-scale
 Material, Dimensions & Data subject to change without notice

*** 2P-450 for fine to granular materials
 ‡ 4P-1000 for lumpy or stringy materials
 † When possible use wedge bracket over clamp-on for better vibration transfer
 Caution: Always use stabilizing jacks on both sides of the car when using shakers.

VIBCO RAIL BOSS RAILROAD SHAKERS



- Patented
- Quiet
- Powerful
- Low Maintenance

RB-6500 - LATEST IN RAILROAD CARSHAKER TECHNOLOGY

The RB-6500 with its unique inflatable air bag, is able to transfer more vibration force to the car. That vibration will clear out your toughest loads. Coarse sand, stone and asphalt or powdery flour and cement are no match for the RB-6500 vibration. Your railroad car will be cleared quickly and made ready for its next load. More importantly, the full load will be delivered with no waste left behind in the rail car.

AS EASY AS 1, 2, 3

1. Easy in – just drop the RB-6500 unit into the dovetail bracket welded onto the hopper on the railroad car. The unit will fit easily with some play.
2. Activate the rubber air bag. The air pressure will wedge the specially designed male wedge bracket into the dovetail bracket.
3. Now start the vibrator – there will be *no loss* of vibration force – all will be directed into the hopper, – *no loss* of force due to a loose vibrator, and – *no wear or noise* due to a loose vibrator.

When the car is unloaded, simply turn off the air pressure to the vibrator to stop it. Deflate the air bag and the unit is now loose and can easily be lifted from the bracket - no hammering out needed!

RCP-BUGGY FOR RAILROAD SHAKERS

VIBCO's fully adjustable, RCP-buggy makes moving and installing your railroad carshaker easy and safe. It maneuvers conveniently, making it ideal for moving vibrators from railcar to railcar. Working perfectly with VIBCO's own vibrators, it will also work with any other make and model.

The basket that sits on the end of the RCP is specifically made to cradle your vibrator model. Please specify the unit you plan to use when ordering. The RCP-buggy can easily be adjusted to the user's height as well as the weight of the unit and more:

Its ergonomic construction is designed to take the pressure off of lifting the unit into place and removing it, making it a real job site safety investment. It can be operated by a single worker, increasing productivity, without straining backs.

Hand injuries can also be reduced as hand lifting of the vibrator is eliminated. The RCP-Buggy is a lightweight and economical solution with substantial strength in moving heavy railcar shakers. It's a "Must Have" for every rail yard.

1. Adjust height and angle of basket to achieve best fit. Replace basket as needed to fit additional vibrator models.



**RB-6500-SVR &
RB-5000-CCW
with the latest
in technology**



3. Adjust angle between base and handle to fit vibrator pocket height
4. Adjust handle height for improved ergonomics and leverage
2. Adjust the length to fit distance from platform to vibrator pocket

VIBCO PIPE BRACKETS

ENGINEERED SYSTEMS THAT WORK!



USE VIBCO MOUNTING SOLUTIONS FOR BEST FORCE TRANSFER

We believe in giving you choices and options to meet your needs! We offer a complete line of mounting hardware and brackets to suit any mounting configuration for a wide variety of industrial and construction vibrator applications including: pipe mounting and other

brackets, clamp blocks, railroad car shaker wedge brackets and clamp-on brackets, adapter plates, and concrete form brackets. VIBCO's Easy Mounting System is perfect for most industrial vibrator installations. Contact a VIBCO application engineer to discuss the best mounting solution for you. (For pipe brackets, please specify pipe diameter with order!)



MOUNTING

VIBCO CONTROL BOXES

FOR A VARIETY OF UNITS


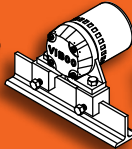
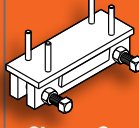
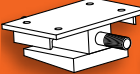
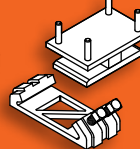

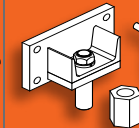
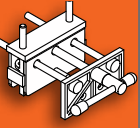
SPEED CONTROLS, TIMERS & SWITCHES

Convenient speed control boxes and timer boxes help regulate VIBCO vibrators so that you get the best results and longest life

from your units. VIBCO offers over 200 standard control boxes for our vibrators that are manufactured for individual models, and our engineers regularly design custom layouts to meet individual needs.



VIBCO MOUNTING BRACKETS

BRACKETS FOR STANDARD MODELS		Mounting Bracket	Clamp Block	Car Shaker & Form Bracket	Car Shaker Wedge Bracket	Form & Bin SB Shoe Bracket	Wedge Type Form Bracket	Pin Form Bracket UPF-Female	Wooden Form Bracket
				 Clamp-On			 UWF-Female		
Female bracket weight		—	—	Channel bracket: lg. 28.15/sm14.3 lbs	25 lbs.	7.7 lbs.	UWF-3: 5.6 lbs. UWF-1: 3.7 lbs.	2 lbs.	—
2P-75		VMM-11 (2)	—	VMC-81 (17)	—	—	VMT-11 (15)	—	—
2P-100		VMM-111 (2)	—	VMC-82 (17)	—	—	VMT-1 (15)	—	—
2P-150		VMM-12 (7)	—	VMC-83 (22)	—	—	VMT-12 (19)	—	—
2P-200, 4P-350		VMM-2 (7)	—	VMC-2 (36)	VMW-2 (27)	VMH-2 (15)	VMT-2 (19)	—	VMF-2 (14)
4P-700 & 1000, 6P-300 & 500		VMM-4 (11)	—	VMC-4 (39)	VMW-4 (31)	VMH-4 (18)	VMT-4 (23)	—	VMF-4 (18)
2P-450,	1 ph	VMM-4 (11)	—	VMC-4 (39)	VMW-4 (31)	VMH-4 (18)	VMT-4 (23)	—	VMF-4 (18)
	3 ph	VMM-3 (11)	—	VMC-3 (39)	VMW-3 (31)	VMH-3 (18)	VMT-3 (23)	—	VMF-3 (18)
2P-800	1 ph	VMM-61 (21)	—	VMC-61 (49)	VMW-61 (41)	VMH-61 (28)	—	—	—
	3 ph	VMM-5 (21)	—	VMC-5 (49)	VMW-5 (41)	VMH-5 (28)	—	—	—
2P-1700		VMM-6 (21)	—	VMC-6 (40)	—	—	—	—	—
4P-1400		VMM-6 (21)	—	VMC-6 (40)	—	—	—	—	—
2P-2500, 2P-3500 & 4500		VMM-7 (21)	—	VMC-7 (41)	—	—	—	—	—
4P-2000		VMM-6 (21)	—	VMC-6 (40)	—	—	—	—	—
6P-1000		VMM-6 (21)	—	VMC-6 (40)	—	—	—	—	—
8P-500		VMM-6 (21)	—	VMC-6 (40)	—	—	—	—	—
2P-5500, 4P-3000 & 5000		VMM-8 (51)	—	—	—	—	—	—	—
6P-1500 & 2500		VMM-8 (51)	—	—	—	—	—	—	—
8P-750, 8P-1200		VMM-8 (51)	—	—	—	—	—	—	—
SPR, SPRT-20, 21, 40, 60 & 80		SPM-1 (2) SPM-2 (3)	C-2 (3) C-2 (3)	—	—	—	—	—	—
SPWT		SPWM (3)	—	SPWC (8)	—	—	—	—	—
SCR-100, US-100, DC-100		UM-1 (2)	C-2 (3)	—	—	—	—	—	—
SCR-200, US-450, DC-450		UM-2 (4)	C-4 (4)	UC-3 (15)	—	UA-1 (11)	UW-4 (16)	UW-1 (5)	USF-1 (11)
US-700, DC-700		UM-7 (2)	C-4 (4)	UC-4 (15)	—	—	UW-5 (14)	—	USF-4 (9)
SCR-500		SCRM-2 (8)	—	SCRC-2 (20)	SCRW-2 (28)	SCRA-2 (15)	—	—	SCRF-2 (16)
SCR-1000		SCRM-1 (8)	—	SCRC-1 (20)	SCRW-1 (28)	SCRA-1 (15)	—	—	SCRF-1 (16)
SFC MODELS		SFCM (4)	—	—	—	SFCH (11)	—	—	—
FC MODELS		FCM-1 (5)	—	FBB-1 (15)	—	FCH-1 (12)	—	—	—
US-900, DC-900		UM-3 (6)	—	UC-1 (15)	—	UA-2 (13)	UW-2 (18)	—	USF-2 (13)
US-1600, DC-1600		UC-4 (6)	—	UC-2 (16)	—	UA-3 (13)	UW-3 (18)	—	USF-3 (13)
BB, BBS, FBS MODELS		—	C-1 (3)	—	—	—	—	—	—
B-130, BV-130, BVS-130		BVM-1 (2)	C-2 (3)	—	—	—	—	—	—
B, BV, BVS-160 & 190		BVM-2 (2)	C-2 (3)	—	—	—	—	—	—
B-250, BV-250, BVS-250		BVM-3 (2)	C-2 (3)	—	—	—	—	BVP-5 (5)	—
B-320, BV-320, BVS-320		BVM-4 (2)	C-3 (3)	—	—	BVH-4 (9)	BVT-4 (14)	BVP-4 (5)	BVF-4 (9)
BV-380, BVS-380		BVM-5 (4)	C-4 (4)	—	—	BVH-3 (11)	BVT-3 (16)	BVP-3 (5)	BVF-3 (11)
BVS-440, BVS-510		BVM-6 (6)	C-4 (4)	BVC-3 (15)	—	BVH-2 (13)	BVT-2 (18)	BVP-2 (5)	BVF-2 (13)
BVS-510F		BVM-61 (6)	—	BVC-2 (15)	—	BVH-21 (13)	BVT-21 (18)	BVP-21 (5)	BVF-21 (13)
BVS-570, BVST-4400		BVM-7 (7)	—	BVC-1 (15)	BVW-1 (27)	BVH-1 (14)	BVT-1 (19)	—	BVF-1 (15)
V-130, VS-130		VSM-1 (2)	C-2 (3)	—	—	—	—	—	—
V, VS-160 & 190		VSM-2 (2)	C-2 (3)	—	—	—	VST-3 (15)	VSP-3 (5)	VSF-4 (9)
V-250, VS-250		VSM-3 (4)	C-2 (3)	—	—	VH-1 (11)	VST-2 (17)	VSP-2 (5)	VSF-2 (12)
V-320, VS-320		VSM-3 (4)	C-3 (3)	—	—	VH-1 (11)	VST-2 (17)	VSP-1 (5)	VSF-2 (12)
V-380, VS-380		VSM-4 (4)	C-4 (4)	VC-3 (15)	VSW-1 (25)	VH-2 (11)	VST-1 (17)	—	VSF-1 (12)
VS-510		VSM-5 (4)	C-4 (4)	VC-1 (15)	—	VH-3 (11)	VST-4 (17)	—	VSF-3 (12)
CCF-2000		CCM-3 (3)	—	CCFC-3 (31)	CCFW-3 (24)	CCFH-3 (10)	CCW-2 (16)	—	—
CCF-5000		CCM-2 (7)	—	CCFC-1 (35)	CCFW-1 (28)	CCFH-1 (14)	CCW-3 (20)	—	—
CCL-5000		—	—	CCFC-2 (29)	CCFW-2 (22)	CCFH-2 (15)	—	—	—
SVR-4000		SVM-1 (6)	—	SVC-1 (34)	SVW-1 (27)	SVA-1 (13)	SVH-1 (18)	SVP-1 (5)	SVF-1 (13)
SVR-5500		—	—	SVC-2	SVW-2 (22)	—	SVH-2	—	—
SVRF-5500		SVM-2 (8)	—	SVC-4 (37)	SVW-4 (29)	—	—	—	—
SVRL, SVRLS-5500, 6500 & 8000		—	—	CCFC-2 (29)	SVW-2 (22)	CCFH-2 (15)	—	—	—
SVR-8000		SVM-3 (9)	—	SVC-3 (38)	SVW-3 (29)	—	—	—	—
PF, HF-800, 1200 & 1500		PFM-1 (9)	—	PFC-1 (38)	PFW-1 (29)	PFA-1 (16)	—	—	—
PF, HF-3500, HLF-3500		PFM-2 (11)	—	PFC-2 (40)	PFW-2 (31)	PFA-2 (18)	—	—	—

MADE TO YOUR SPECS
VIBCO ENGINEERS
 will design special brackets for your applications

() weight in lbs. NOTE: Material, Dimensions & Data subject to change without notice

VIBCO MOUNTING BRACKETS



Mounting Plates, Channels, and Mounting Kits with Channel Irons are available.



The wider UWF-3 Heavy Duty Wedge Bracket is used for stronger forces.



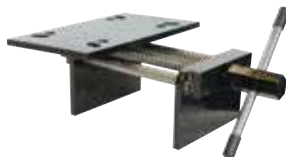
UWF-1 Female Bracket allows multiple hoppers to use one vibrator as needed.



UPF bracket is ideal for precast and other applications. Vibrators can be easily moved.



The VIBCO Form Bracket can be used for wood, plastic, fiberglass, & metal wall forms.



A SB Shoe Bracket attaches an SVRF-5500 unit to an assembly line.



Lug Brackets take the vibration where you want it.
LC-1 LC-2



Rail Road Car Wedge Bracket



Clamp-On Bracket



MOUNTING SYSTEMS

TRAILA™ VIBRATOR MOUNT



- Easily moves from hopper to hopper
- Securely attaches to hoppers on grain trailers and more
- High Temp Units Available
- Powerful yet Lightweight

The Traila™ unit is designed to save weight and make unloading your truck and tender hoppers simple and effective.

Traila™ can be easily moved from hopper to hopper as needed with its suction activated base. There are no bolts, no welding, and no hassle involved! The suction is so effective, it even works on plastic tote bins, fiber drums bins and any other non-porous surface.

VIBCO's specialized air fitting simply attaches to your truck's compression system. You can quickly swap between bins using



nothing more than an air hose. A straightforward switch starts the suction and another starts the vibration.

Redesigned for reduced weight and versatility, the Traila™ has the right force and frequency to clear your toughest loads.

STKIT-901GP

- For columns with a tight radius

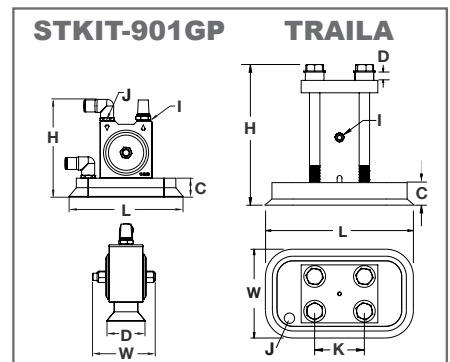
The STKIT-901GP can be easily moved from column to column as needed. The neoprene suction base is paired with

a strong, specialized MLT-190 which is ideal for small diameter columns and curved surfaces with its small footprint. VIBCO engineers are happy to suggest the perfect STIK-IT for your needs. We have versions to handle small areas as well as railroad cars.

Dimensions

Model	L		W		H		C		D		I	J	K	
	in.	mm	in.	mm	in.	mm	in.	mm	in.	mm	NPT	NPT	in.	mm
TRALA-STKIT150	10	254	6	152	8-7/16	214	1-3/8	35	5/16	8	1/4	3/8	2-1/2	64
TRALA-STKIT200	10	254	8-1/2	216	9-5/16	237	2-1/8	54	1/4	6	1/4	3/8	3	76
STKIT-901GP	6	152	3-5/16	84	5-1/4	133	1	25	2	51	1/4	1/2	—	—

NOTE: • Material, Dimensions & Data subject to change without notice • Dimensions ±1/16"



Technical Data

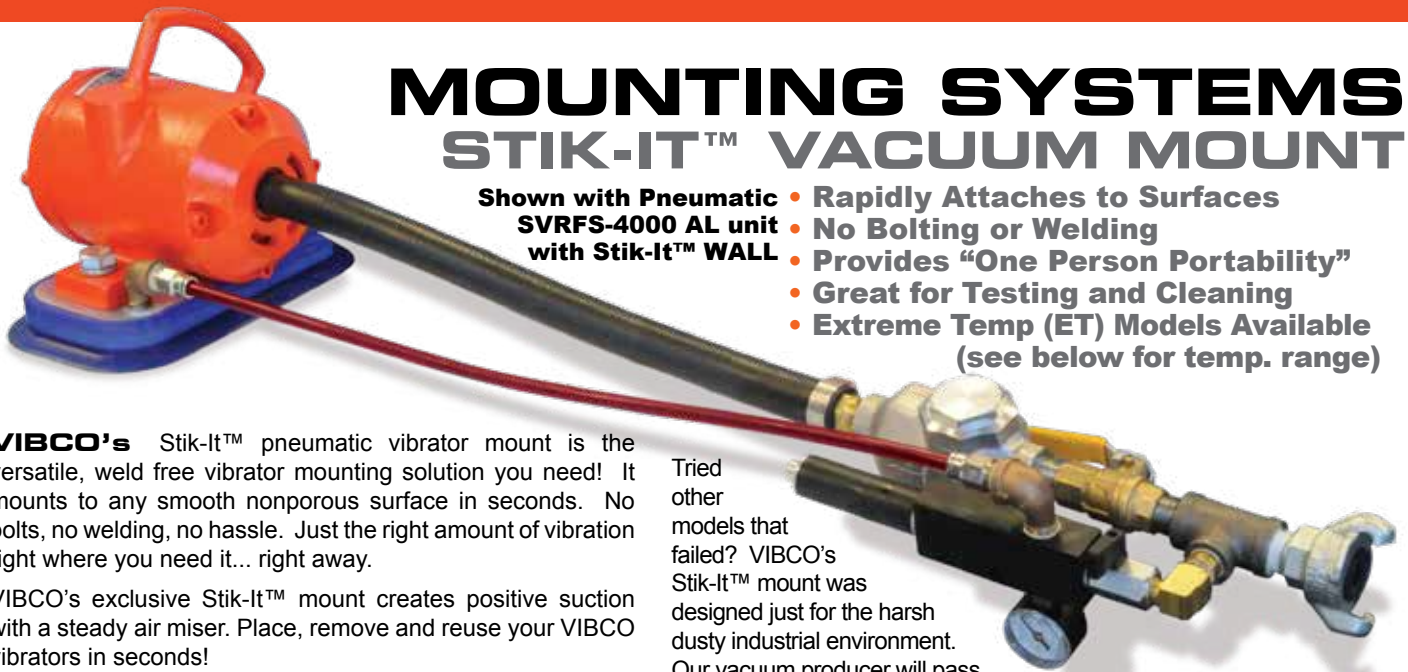
Model	Weight		60 PSI (4 Bar)		80 PSI (5.5 Bar)		Max. Weight* of Material in Bin Slope Area			
			Cubic ft./min.	Vibration/min.	Cubic ft./min.	Vibration/min.				
	lbs.	kg.	CFM	VPM	CFM	VPM	min. lbs.	max. lbs.	min. kg.	max. kg.
TRALA-STKIT150	14.9	6.7	9	2,400	11	3,200	400	1,000	180	455
TRALA-STKIT200	21.4	9.6	12	2,400	15	3,000	1,000	4,000	455	1,815
STKIT-901GP	4.1	1.9	7.5	7,000	8.5	7,200	—	2,700	—	1225

* Rule of thumb for sizing: One lb. vibrator force to each 10 lbs. of bin content at 80 PSI

NOTE: • Data obtained on laboratory test block
• Frequency and force will vary with quality of air, unit lubrication, and rigidity of mount
• Material, Dimensions & Data subject to change without notice

MOUNTING SYSTEMS

STIK-IT™ VACUUM MOUNT



- Shown with Pneumatic SVRFS-4000 AL unit with Stik-It™ WALL**
- Rapidly Attaches to Surfaces
 - No Bolting or Welding
 - Provides “One Person Portability”
 - Great for Testing and Cleaning
 - Extreme Temp (ET) Models Available (see below for temp. range)

VIBCO's Stik-It™ pneumatic vibrator mount is the versatile, weld free vibrator mounting solution you need! It mounts to any smooth nonporous surface in seconds. No bolts, no welding, no hassle. Just the right amount of vibration right where you need it... right away.

VIBCO's exclusive Stik-It™ mount creates positive suction with a steady air miser. Place, remove and reuse your VIBCO vibrators in seconds!

VIBCO Stik-It™ mounts can be used with over 40 of VIBCO's pneumatic, electric and hydraulic vibrators. Just ask a VIBCO Engineer to recommend the right vibrator and mount.

Tried other models that failed? VIBCO's Stik-It™ mount was designed just for the harsh dusty industrial environment. Our vacuum producer will pass large dust particles that will kill other units! Plastic tote bins, IBCs, test labs, rail cars, fiber drums, V cone blenders, temporary material flow problem spots, hopper clean outs... all are perfect places to Stik-It™!



MOUNTING

STKIT-908*	STKIT-906*	STKIT-903*	STKIT-902*
<p>Compatible with: VS-510 • SCR-300, SCR-400 • 2P-75, 2P-100, 2P-150 • 50-2S</p>	<p>Compatible with: VS-380 • V-380 • 50-1-1/2S-VC • US-450T, US-700 SVRFS-4000AL</p>	<p>Compatible with: MLT-190, MLT-250, MLT-320 • BVS-130, BVS-160, BVS-190, BVS-250, BVS-320 • V-130, V-190, V-250, V-320 • VS-130, VS-160, VS-190, VS-250, VS-320 • 50-1S, 50-1-1/4S • BV-130, BV-190, BV-250, BV-320 • SPR-20, SPR-21, SPR-40, SPR-60, SPR-80 • SCR-50, SCR-100 • SPRT-21, SPRT-60, SPRT-80</p>	<p>Compatible with: MLT-190 • BVS-130, BVS-160, BVS-190 • V-130, V-190 • VS-130, VS-160, VS-190 • 50-1S, 50-1-1/4S • BV-130, BV-190 • SPR-20, SPR-21 • SCR-50, SCR-100 • SPRT-21</p>

Dimensions - Other sizes available. Consult factory for more information. *Vibrators sold separately

Model	L = Length		W = Width		H = Height		Inlet NPT
	inch	mm	inch	mm	inch	mm	
STKIT-902 & STKIT-902ET	8	203.2	3	76.2	1-3/8	34.9	1/4
STKIT-903 & STKIT-903ET	11	279.4	3-1/2	88.9	1-3/8	34.9	3/8
STKIT-906 & STKIT-906ET	10	254.0	6	152.4	1-3/8	34.9	3/8
STKIT-906WALL & STKIT-906WALLET	10	254.0	6	152.4	1-3/8	34.9	3/8
STKIT-908 & STKIT-908ET	10	254.0	8-1/2	215.9	2-1/8	53.9	3/8

Technical Data

Model No.	psi	bar	CFM	Std. Temp. Range		Extreme Temp. Range		Weight	
				°F	°C	°F	°C	lbs	kg.
STKIT-902 & STKIT-902ET	80	5.5	8	32°F to 125°F	0°C to 51°C	-40° to 450°F	-40° to 232°C	0.8	0.4
STKIT-903 & STKIT-903ET	80	5.5	8	32°F to 125°F	0°C to 51°C	-40° to 450°F	-40° to 232°C	1.6	0.7
STKIT-906 & STKIT-906ET	80	5.5	8	32°F to 125°F	0°C to 51°C	-40° to 450°F	-40° to 232°C	3.3	1.5
STKIT-906WALL & STKIT-906WALLET	80	5.5	8	32°F to 125°F	0°C to 51°C	-40° to 450°F	-40° to 232°C	3.3	1.5
STKIT-908 & STKIT-908ET	80	5.5	8	32°F to 125°F	0°C to 51°C	-40° to 450°F	-40° to 232°C	4.4	2.0

STD temp. range uses blue neoprene base, Extreme temp. range uses black silicone base • NOTE: Material, Dimensions & Data subject to change without notice • Dimensions ±1/16"

AIR CANNONS SOLVES MATERIAL MOVING PROBLEMS

- Advanced Valve Technology
- No Backlash
- Quiet Operation
- Clog-Free Valve
- Maintenance Free
- Safe External Servicing!
- ASME Coded Vessel



Ask for
Catalog 9131
Air Cannons



AIR CANNON SIZE COMPARISON FROM 52.5" TO 5.5"



Dimensions

MODEL NO.	DESCRIPTION	HEIGHT		DIAMETER		VOLUME	
		inch	mm	inch	mm	ft. ³	Liters
ABS-1-5MB	VIBCO's Mini B - Smallest industrial Blaster in the world	5-9/16	141	6	152	0.20	0.57
ABS-1-1/2	Compact, narrow design for use in tight areas.	26-7/8	683	5-13/32	137	.11	3.1
ABS-2EV	<ul style="list-style-type: none"> • Works well for wood, steel and concrete bins • Same day or next day shipping • All cannons 100% manufactured in the USA • Operates on plant air from 40 to 120 psi • Air Cannons have been made with pride since the '70s • Can be used singly or in multiples • Cast Iron construction for durability 	15	381	10	254	0.60	17.0
ABS-2-2EV		24	610	12	305	1.36	39.0
ABS-4-2EV		32	813	12	305	1.36	39.0
ABS-4-4EV		36	914	16	406	3.54	100.0
ABS-4-5EV		48	1,219	16	406	4.35	123.0
ABS-4-10EV		52-1/2	1,334	24	610	9.33	264.0

NOTE: Material, Dimensions & Data subject to change without notice • Dimensions ±1/16"

ABS SERIES

WITH PATENTED DOUBLE PISTON VALVE

There are 2 methods for selecting the proper VIBCO Air Cannon. The first method is to consider the bin size and the second is required when you have heavy or coarse materials or odd shaped bins.

METHOD 1

As a general rule, if the diameter of the bin is:

- **2 to 6 feet diameter or side**, use **ABS-1-1/2**
- **6 to 10 feet diameter**, use **ABS-2EV** or **ABS-2-2EV**
- **10 to 15 feet** use **ABS 4-2EV**, one for every 13-15 feet of circumference or perimeter.
- **16 to 20 feet** use **ABS-4-4EV** or **ABS 4-5EV**, one for every 20-25 feet of circumference or perimeter.
- **21 to 26 feet** use **ABS 4-10EV**, one for every 25-30 feet of circumference or perimeter.

METHOD 2

This method is used for tough materials and odd shaped bins. First, determine the area to be blasted (material hang-up area). Second, are you using Material Type A or Material Type B?

MATERIAL TYPE A	MATERIAL TYPE B
Large chunks, high moisture content; clings to walls; will set up or harden when stored; weight in excess of 65-70 lbs. per cu. ft., or slope angles less than 30° with small discharge openings.	Dry, powdery, stringy or spongy, with material weight less than 60 lbs. per cu. ft., slope angles more than 45° and large discharge openings.

Find the blast area you need below using the proper column for your material type (Material A or Material B). Now lay out area of influence in the region to be blasted. Make the area of influence overlap in critical areas.

Technical Data

MODEL NO.	FREE AIR 80 PSI per Ft. ³ (L)	TEMP. RANGE °F (°C)		DISCHARGE SIZE NPT	MATERIAL A BLAST SPAN L' x D' (mm x mm)	MATERIAL B BLAST SPAN L' X D' (MM X MM)	MOUNTING KIT
		Standard	High Temp.				
ABS-1-5MB	0.1 (2.8)	200°F (93°C)	340°F (170°C)	1-1/4 NPT	2' x 1' (610 x 305)	2' x 2' (610 x 610)	MBM-1
ABS-1-1/2	.6 (17)	200°F (93°C)	340°F (170°C)	1-1/4 NPT	3' x 1' (915 x 305)	4' x 2' (1,220 x 610)	MBM-1-1/2ABS
ABS-2EV	3.3 (92)	200°F (93°C)	340°F (170°C)	2 NPT	4' x 2' (1,220 x 610)	7' x 3' (2,135 x 915)	MK2ABSEV
ABS-2-2EV	7.4 (210)	200°F (93°C)	340°F (170°C)	2 NPT	5' x 3' (1,525 x 915)	8' x 4' (2,440 x 1,220)	MK2ABS-2EV
ABS-4-2EV	7.4 (210)	200°F (93°C)	340°F (170°C)	4 NPT	6' x 4' (1,830 x 1,220)	9' x 5' (2,745 x 1,525)	MK4ABS-2EVM
ABS-4-4EV	19.2 (544)	200°F (93°C)	340°F (170°C)	4 NPT	7' x 4' (2,155 x 1,220)	10' x 5' (3,050 x 1,525)	MK4ABS-5EV
ABS-4-5EV	23.7 (670)	200°F (93°C)	340°F (170°C)	4 NPT	7' x 5' (2,135 x 1,525)	10' x 6' (3,050 x 1,830)	MK4ABS-5EV
ABS-4-10EV	50.8 (1438)	200°F (93°C)	340°F (170°C)	4 NPT	8' x 6' (2,440 x 1,830)	12' x 7' (3,660 x 2,135)	MK4ABS-10EV



AIR CANNON

VIBRATION TABLES TESTING & GRID TOP

**TEST TABLE
USTT**
18", 24" & 36"

**MADE
TO YOUR
SPECS**

ANY SHAPE FOR ANY PURPOSE

VIBCO Vibrators offers affordable, effective and durable vibration tables to suit any industrial or construction application. From settling material for shipping or consolidating concrete, VIBCO has a Vibrating Table solution to meet your needs.

We have the shortest vibrating table lead times on the market. VIBCO's US-TT vibrating tables and US-RD vibrating tables will ship within 7-10 business days (vs. competitor's 4-6 weeks). That means that you will have the vibrating tables that you want, exactly when you want them.

VIBCO fabricates custom tables to meet your specific needs. Our designs use strong lightweight rectangular tubing for more vibration transfer to the load. For more information ask for our foundry bulletin and Catalog #7902 or visit www.vibco.com

TEST TABLE

TEST TABLES

- Simulate Handling & Transportation Shocks
- Detect Marginal Connections
- Verify Integrity of Electric Circuit
- Stop Costly Field Service Calls
- Safe! No Harm to Sound Circuits
- Remove Dangerous Residue
- Inexpensive Full Range Control
- Handles Both Sub Assemblies & Complete Chassis

VIBCO's exclusive patented live top table design assures full, even vibration in all areas of the table top. Consistency and reliability of testing is assured. VIBCO's wide choice of variable and consistent frequency equipment gives the ultimate in low cost product reliability testing. Choose from standard 24" x 24" x 36" high table or special table designed for your particular requirements.

For more information, ask for VIBCO's complete test table brochure.

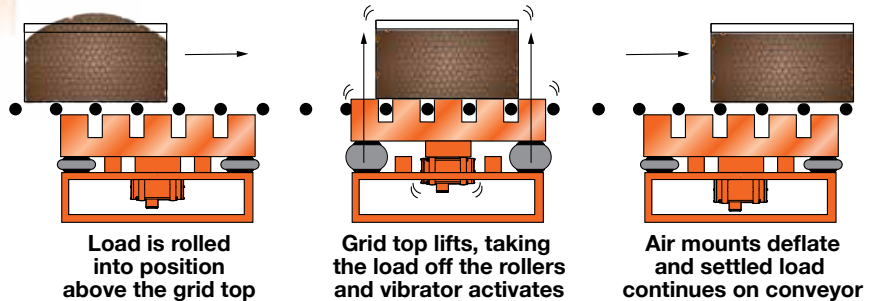
GRID TOP TABLES

- Adaptable to any Roller Conveyor
- Lightweight yet Strong
- Automatic Operation

VIBCO's grid Top Tables solve many filling, packing and weighing problems. Most common is the standard Grid Top Table with vibrators underneath. Other solutions are shown below for weigh scale applications and vibrator placement.

The VIBCO grid top table is designed to fit between the rollers of your conveyor. The load, foundry flask, drum or box - is rolled into position. Air mounts lift the grid top and take the load off the rollers. The vibrators are activated and the load vibrated. Air mounts are deflated and the load is back on the conveyor ready to be moved along. All done in seconds without handling. See illustration below.

**GRID TOP TABLES
(above & below)**
Heavy duty steel tube
and frame construction



VIBRATION TABLES FOR COMPACTION, PACKING & MORE

COMPACTION TABLES

- Heavy Duty for Maximum Load
- Standard or Custom Made to Specification
- 115-Volt Plug-In
- Adjustable Force
- Speed and Impact Adjustable

VIBCO's compaction tables can be supplied with pneumatic or electric vibrators. Most are both speed and force adjustable. Heavy duty construction. "Built in" versatility means these tables can be used for packing, settling, casting concrete as well as fatigue testing.

Vibration is isolated from the frame with inflatable air mounts, rubber mounts or springs.

VIBCO engineers will design a table to meet your specific needs.

Ask for Catalog #7902

FLAT PLATFORM TABLES

- Low Profile - as Low as 2" from Floor
- No Vibration Transfer to the Floor

Vibrating platform with a working surface as low as 2" from floor. The platform table can be used under filling machines for packing drums and barrels. Low profile eliminates the need for raising machinery or breaking into the floor, and makes loading and unloading heavy duty drums easier,

Packing more material per given volume saves costly space and lowers escalating transportation costs.

Ask for Catalog #7902

LOW PROFILE PACKER

- Adjustable brackets for drums or boxes
- Adjustable speed & force 115 volt heavy duty vibrator
- Low Profile drum packer 3" off floor
- Heavy steel top for long wear
- Remove Dangerous Residue
- Shock absorber to eliminate vibration transfer
- Runners to secure to floor

VIBCO's popular Drum Packer has an adjustable force and speed vibrator to handle a variety of materials. 115 volt makes it easy to move where needed and plugs into any available 115 volt outlet.

COMPACTION TABLE
With High Amplitude Mounts



COMPACTION TABLE



LOW PROFILE COMPACTION TABLE



LOW PROFILE COMPACTION TABLE



LOW PROFILE DRUM PACKER



COMPACTION TABLE WITH:
With Explosion-Proof Style 4PX Vibrator and Custom Paint.



MADE TO YOUR SPECS

NOTE: Material, Dimensions & Data subject to change without notice.

VIBCO CONSTRUCTION DIVISION ON THE JOB APPLICATIONS

below: VIBCO CEO, Karl Wadensten, demonstrates the proper use and effectiveness of the GR 1600.



Above: A Model KA, Internal vibrator, with its patented Air-Saver design, gives high frequency, high force performance with the lowest air consumption.

Right & below: Our GR-1600 smoothly rolls the pothole filler material and thoroughly compacts it using vibration.



VIBCO CONSTRUCTION DIVISION

INTERNAL CONCRETE VIBRATORS

Electric Model JV & AC

- Interchangeable Heads
- 3/4" to 2-1/2" Head Size
- Heavy Duty Universal Motor
- Interchangeable Flexible Shafts
- Reversible Shafts for Double Life
- Expansion Shafts Available Up to 21 Ft.



Pneumatic Model KA

- Maintenance Free
- Only One Moving Part
- 1-3/8" to 6" Head Size
- Patented Wear Plate for Longer Life
- Patented Design • Job Proven for Over 40 Years
- Patented Air Saver Chamber for Lower Air Consumption



Ask for
Catalog
#9606

PLATE COMPACTORS FOR ASPHALT OR SOIL

Forward and Reverse Operating MODEL VR-18

- Self Clean Plate
- 2000 TO 4350 lbs. of Force depending on model chosen
- Travels 65-85 ft./min. depending on model



Forward Operating MODEL TP

- Self Clean Plate
- 1500-4500 lbs. of Force depending on model
- Travels 100-110 ft./min. depending on model
- Available models include TP-10, TP-1220, TP-1830 and TP-2045



Ask for
Catalog #9808

POT-HOLE PACKERS & ROLLERS FOR ASPHALT AND SOIL COMPACTION



GR-3200

- Better uphill traction
- Corrosion-resistant water sprinkler system
- Low-cost compactor for mid-sized jobs
- One year/1000 hour parts & labor warranty



GR-1600

- One Man Operation
- Light 92 lbs
- Water Tank
- 1600 lbs Force
- 8" Compaction



Ask for
Catalog
#9808

NOTE: Material, Dimensions & Data subject to change without notice.

#VIBCO SOLUTIONS

- ▶ ELECTRIC, PNEUMATIC & HYDRAULIC VIBRATORS
- ▶ AIR CANNONS
- ▶ RAIL ROAD CAR SHAKERS
- ▶ VIBRATING TABLES
- ▶ COMPACTORS & ROLLERS



VIBCO®

VIBRATORS

<http://www.VIBCO.com> • vibrators@vibco.com



#VIBCOsolutions

MADE IN USA 

75 Stilson Road, Wyoming, RI 02898
tel: 401.539.2392 • 800.633.0032

CANADA 

2215 Dunwin Drive, Mississauga, Ont. L5L 1X1
tel: 905.828.4191 • 800.465.9709