

Video 244: The Antediluvian Aryan Race and the World Beneath (Part 3)

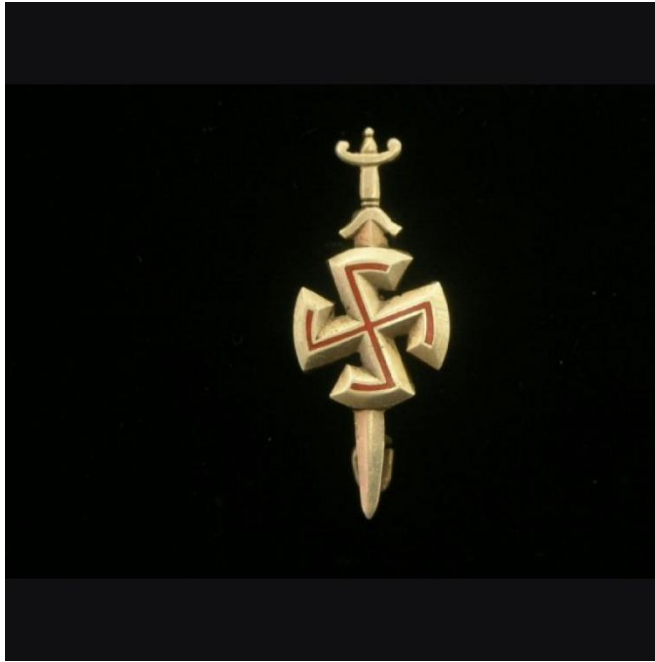
by Wes Penre, February 18, 2021

The video to this transcript can be found on our Video channel: <https://wespenrevideos.com>



Bundesarchiv, Bild 135-KA-10-072
Foto: Krause, Ernst | 1938/1939

Time for Part 3 in our Antediluvian series about the Aryan Namlú'u race. This time, we will start touching upon the Nazi connection with the Inner Earth and their collaboration with Tibet and certain secret societies. This is a huge subject, which will take more than one article and video to complete, but I personally find this subject fascinating. To you, who are listening to the video, also feel free to check the footnotes in the transcript for references. The transcript can be found on our blog in PDF, just beneath the video itself.



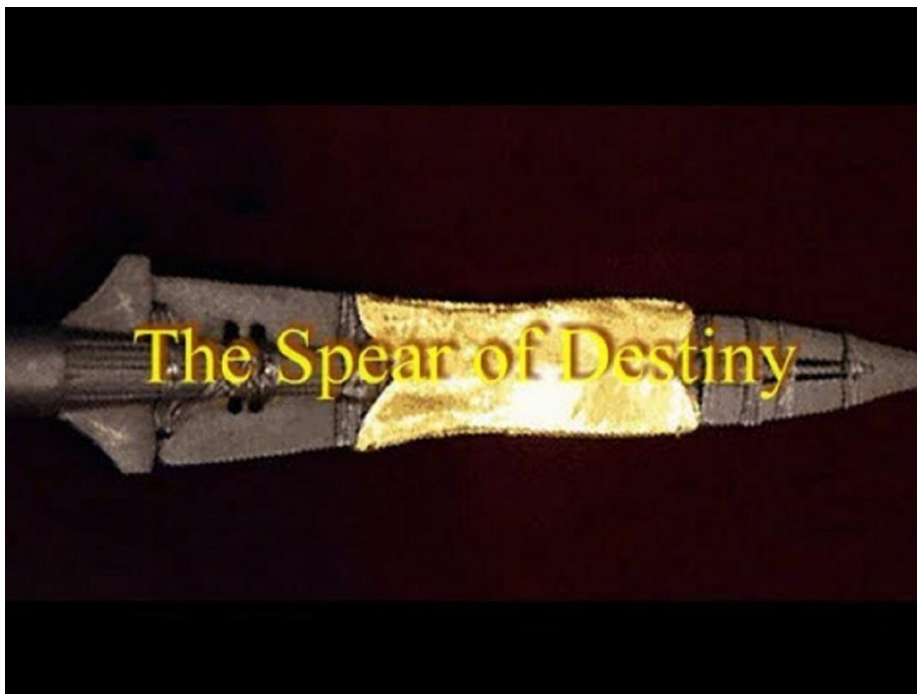
The Nazi Connection

In Part 2, we talked about the honeycombed planet we live on, and that there is intelligent life beneath the surface. We hear lots of different accounts talking about a subterranean world with gigantic trees, inhabited by tall friendly, and sometimes not so friendly humanoid races. This is nothing new—the Underworld and the Inner Earth have been common themes throughout history and mythology all over the world. In more recent time, it has been studied by secret societies, such as the Thule Society and the Vril Society in the 1920s-1940s Germany and Nazi Germany. Moreover, we can gather information on this from Admiral Byrd, “fictional” books such as Jules Verne’s “A Journey to the Center of the Earth,” and Willis George Emerson’s “The Smoky God¹” from 1908, presented as a true story from the 1800s, where two Norwegians encountered friendly giants in Hyperborea, which is the mythological Garden of Edin beneath the North Pole. Most prominent secret societies also talk about the Inner Earth, just like Tibetan monks have throughout history. This is just to name a few.

¹ <https://www.ebooks-library.com/author.cfm/AuthorID/750>



Modern information about the Inner Earth really came to a peak during Nazi Germany, although the new Inner Earth movement started slightly prior to that with the Thule and Vril Societies and the Theosophical Society, led and formed by Mdme Helena Blavatsky in the 1800s.



Video 244: The Antediluvian Aryan Race and the World Beneath (Part 3)

In the early 1990s, I read a very interesting book called, “The Spear of Destiny,” by Trevor Ravenscroft²—a book I highly recommend. It does a deep dive into the occult side of the Nazi party. Here is an excerpt:

“It was largely through the initiative of Professor Karl Haushofer and other members of the Vril Society in Berlin and Munich that exploratory teams were sent out to Tibet. The successions of German expeditions to Tibet, which took place annually from 1926 to 1942, sought to establish contact with Cave Communities...

“Three years after the first contact had been made with the Adepts of Agarthi and Shamballah, a Tibetan community was established in Germany with branches in Berlin, Munich, and Nuremburg. The Adepts of Agarthi were known in Germany as “The Society of Green Men” and strong measures were taken to keep silence about their real significance. They were joined by seven members of the “Green Dragon Society” of Japan, with whom they had been in communication for hundreds of years.

“During the final months of the war, when the Russians reached their quarters in the suburbs of Berlin, they discovered their naked bodies lying in orderly rows, each with a ceremonial knife piercing the abdomen.”³



² <https://www.pdfdrive.com/the-spear-of-destiny-the-occult-power-behind-the-spear-which-pierced-the-side-of-christ-e200696175.html>

³ *Ibid.*

Video 244: The Antediluvian Aryan Race and the World Beneath (Part 3)

Ravenscroft is not the only writer and researcher who is talking about these subjects. Other good examples are Reginald H. Phelps' "Before Hitler Came: The Thule Society and the Germanen Order"⁴, and Gerard Nahon's, "Temps des Kabbalists"⁵ (Kabbalists Times). In the latter, it says, "There was continuous contact between National Socialist Germany and Tibet." There is also an alleged document—a parchment describing a pact between the Dalai Lama and Hitler Germany, where Hitler was known to the Dalai Lama as the *Head of Aryans*⁶.



In my opinion, one of the most interesting secret societies in pre-Nazi Germany and during their regime was the Vril society, led by Maria Orsic, who was a young psychic with channeling abilities. The society was made up of the so-called *Vril Women*, who like Orsic were psychics, as well, but there were prominent male initiates, too.



Occult Secrets of Vril by ROBERT SEPEHR

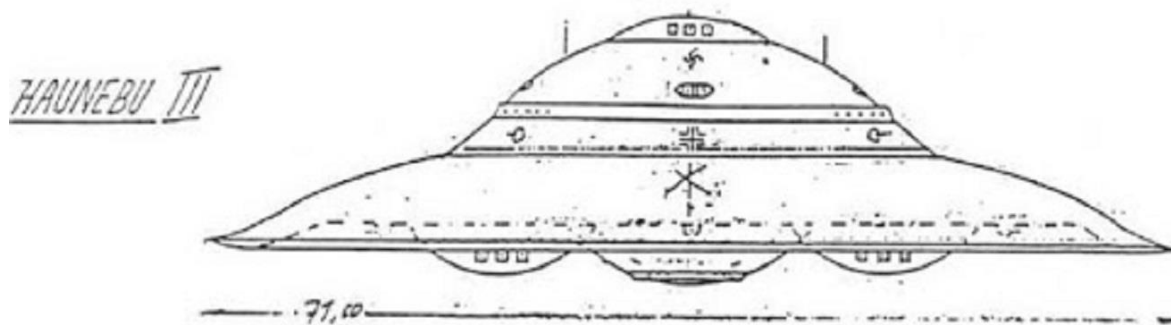
⁴ <https://www.journals.uchicago.edu/doi/abs/10.1086/243738?journalCode=jmh>

⁵ <https://www.amazon.com/Temps-Kabbalistes-D-Grad/dp/B00K873N9U>

⁶ https://www.youtube.com/watch?v=wcf3yYcuX_Q&feature=emb_logo&ab_channel=AtlanteanGardens

Video 244: The Antediluvian Aryan Race and the World Beneath (Part 3)

The term *vril* stands for “the universal energies, directed into the practitioner, leading to the liberation of the physical level of existence. Somadi⁷ is a state of consciousness characterized by clarity of perception and the absence of the ego. It’s the state of consciousness sought by all schools of meditation—a piercing of the veil of ones own subconscious mind and into the superconscious. These were practices said to be used by both the Thule and the Vril societies.⁸” This is an interesting concept, seemingly coinciding with what we’ve called *The Inner Grid* on this channel⁹.



SCHWERER BEWAFFNETER FLUGKREISSEL „HAUNEBU III“

Durchmesser: 77 Meter
Antrieb: Thule-Fachmotor 70 plus Schumann-Levitatoren (gepanzert)
Steuerung: Mag-Feld-Impulsor 4a.
Geschwindigkeit: ca. 7000 Kilom.p.Stunde (rechnerisch bis zu 40000)
Reichweite (in Flugdauer): ca. 8 Wochen (bei S-L-Flug 40% mehr)
Bewaffnung: 4 x 11cm KSK in Drehtürmen (3 unten, 1 oben), 10 x 6cm KSK
in Drehringen plus 6 x Mk 100, 8 x 5cm KSK ferngesteuert
Außenpanzerung: Dreischicht-Vistalen
Besatzung: 32 Mann (arg. Transportverm. max. 70 Personen)
Weltallfähigkeit: 100 %
Stillschwebefähigkeit: 25 Minuten
Allgemeines Flugvermögen: Wetterunabhängig Tag und Nacht
Grundsätzliche Einsatztauglichkeit: Etwa 1945.
Bemerkung: SS-E-IV hält das Material für notwendig, daD in „Haunebu III“ ein großartiges Werk deutscher Technik im Entstehen ist, wegen der allgemeinen Materiallage aber alle Kräfte auf das schneller verfügbare Haunebu II gesetzt werden sollten.
Gemeinsam mit dem leichten Flugkreisel „Vril“ der Schumann-Gruppe könnte „Haunebu II“ die von Führer aufgestellten Forderungen sicherlich erfüllen.

The Vril society also researched advanced propulsion technology, including so-called *flying saucers*, known in the Vedic texts as *vimanas*¹⁰. Many members of these two secret societies later became high-ranking members of the Nazi Party. They believed many

⁷ <https://www.somadimindbody.com/>

⁸ https://www.youtube.com/watch?v=wcf3yYcuX_Q&feature=emb_logo&ab_channel=AtlanteanGardens

⁹ <https://wespenrevideos.com/>

¹⁰ See, “The Wes Penre Papers, The Fifth Level of Learning,” <https://wespenre.com/contents-of-the-fifth-level-of-learning/>

Video 244: The Antediluvian Aryan Race and the World Beneath (Part 3)

ancient civilizations owed their origins to refugees of Atlantis before the Deluge. Bal Gangadhar, leader of the (east) *Indian Independence Movement*, argued that the Vedas could only have been composed in the Arctics, and ancient Aryans brought them south after the onset of the ice age^{11, 12}. The belief was that this Master Race, also portrayed by Mdme Helena Blavatsky as the *Fourth Root Race*¹³, had learned to master free energy. This antediluvian breakaway civilization was said to have survived the Deluge and continued thriving under the surface.



As mentioned in the Wes Penre Papers (WPP); even before WW2, Germany claimed some Antarctic territory they named *New Swabia*. Many expeditions were sent there in the late 1930s, and deep, secret underground bases were built under the ice. These bases could only be reached by submarine. These Nazi bases were still operating after the end of the war (and probably still are), and in 1946-47, the Nazis used high technology and flying saucers to defeat the American air force, led by Admiral Byrd. This was despite a massive navy attack of 4,000 men, including joined British forces. I will discuss Adm. Byrd in a separate video.

¹¹ https://en.wikipedia.org/wiki/The_Arctic_Home_in_the_Vedas

¹² Robert Sepehr, "Occult Secrets of Vril."

¹³ https://en.wikipedia.org/wiki/Root_race



The general Nazi belief, originating from ancient and more recent secret societies, and alleged expeditions and contacts of their own, was that Aryans came down via aliens in Atlantis. Now, the descendants live underground and use vril, aka bioelectricity, to extend life and be in control of energy¹⁴ (also called magick). This may sound crazy to the average person, but if we take the WPP and our previous videos and articles into consideration, and all additional research out there, there are correlations. The Aryans, aka the Namlu'u, *could* be considered “coming down to Earth” via aliens, whether that means via Yaldabaoth and his Archons or via Sophia and Her Helpers. If we think of “coming down” as descending through the dimensions, something also conveyed in the Gnostic texts, we can see the correlations.



¹⁴ https://www.youtube.com/watch?v=3gVCiDLWhLA&ab_channel=RobertSepehr

Video 244: The Antediluvian Aryan Race and the World Beneath (Part 3)

To discuss further in this series: Hitler's psychic connection with Super Humans, who frightened him more than anything else and who inspired him to fulfill his mission to create a new Aryan race. I will also talk more about the Vril Society and the technological advancements during WW2 and beyond, and what implications this has on today's society. And, of course, Adm. Byrd and "Project Highjump" to name a few topics.

Please consider signing up on Patreon. Without your support, it is literally impossible to continue these projects. Patreon supporters are what makes this possible. So, if you like what you see and hear, please consider going to patreon.com/wespenre and sign up. The URL will also be listed in the last frame of this video.

Thank you much for listening/reading and for your support. Talk to you soon...