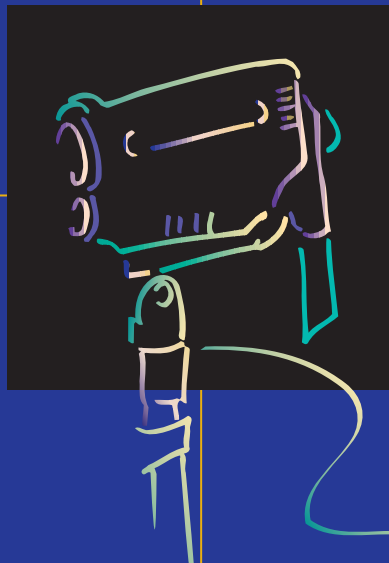


WELCH ALLYN INTRODUCES

THE FIRST



TRUE VIDEO

COLPOSCOPE

Medical Device Depot
Inc.
www.medicaldevicedepot.com
Toll Free 1-877-646-3300

WelchAlllyn™

New **Welch Allyn®** technology
changes the way colposcopy is performed

Low-
Aberration
Optical Design

Adjustable
Illumination
Beam Director

High-
Resolution
CCD Imager

High-
Intensity
Sōlarc Lamp

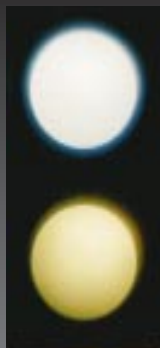
A unique CCD/optics
design that redefines
high-resolution
imaging

■ Highest-quality
1/3" CCD imager currently
available utilizes
380,000 pixels for full-screen,
high-resolution imaging

■ Low aberration optical
lens system design provides
constant, clear, crisp images
for accurate diagnosis and
effective treatment



Sōlarc



Halogen

A new light source
that changes the way
you look at things

■ Proprietary Welch Allyn
Sōlarc lamp generates light
50% brighter and whiter than
any halogen light source for
truer tissue color

■ Concentrated light
source produces uniform,
high-density beam with no
loss of light, even at high
magnification

Medical Device Depot
Inc.

www.medicaldevicedepot.com
Toll Free 1-877-646-3300

The Power of true video imaging

■ Brilliant, High-Resolution Images

No couplers or beam splitters to degrade image quality or field of view

■ Accurate Tissue Color

Solarc illumination provides white, bright light for true color rendition with no light loss at any magnification

■ Easy to Use

Sleek, compact design with ambidextrous controls improves access to the patient



■ Remote Documentation

Capture, store and print images directly from the instrument

■ Continuous Zoom & Focus

Motorized, digitally controlled camera module provides step-free operation

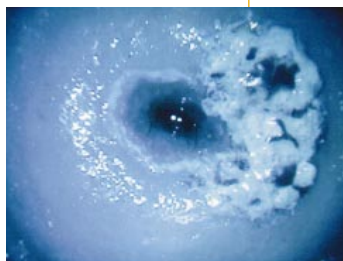
■ Shadow-Free Illumination

Adjustable illumination beam director rotates to eliminate shadows during any procedure



■ Enhanced Education, Compliance & Training

Simultaneous viewing of video images facilitates group participation among doctors, patients and staff



■ Enhanced Vascularity

Patent-pending electronic green filter removes red from image with no loss of light

Medical Device Depot Inc.
www.medicaldevicedepot.com
Toll Free 1-877-646-3300

WelchAllyn™

The Welch Allyn®

VIDEO COLPOSCOPE



S tand-alone efficiency

The Welch Allyn video colposcope is a fully self-contained, stand-alone unit that incorporates light, power and video into a unique, compact system. For colposcopy, this is a true breakthrough that makes all the benefits of high-resolution video imaging affordable for the physician. The result is more convenience, performance and satisfaction for you and your patient than has ever been available before.

Medical Device Depot
Inc.
www.medicaldevicedepot.com
Toll Free 1-877-646-3300

All-in-one integration for true video colposcopy

■ Self-contained design incorporates video, illumination and power in a single, compact module that **maximizes working space**

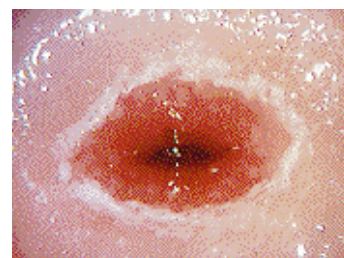
■ The ability to capture, freeze and store images directly from the handle of the instrument for **convenient operation**

■ Choose from two stands—vertical stand with a small footprint to maximize floor space, and swing arm stand that provides unobstructed access to the patient

■ Electronic green filter **enhances vascularity** with no light loss

■ Uniquely designed adjustable illumination beam director for **shadow-free illumination**

■ Digitally controlled step-free system provides **continuous zoom (from 4.5x–25x) and focus**



Medical Device Depot Inc.
www.medicaldevicedepot.com
Toll Free 1-877-646-3300

Specifications

Focal Length.....300 mm
Magnification.....4.5 x – 25 x
Field of View.....66 mm – 14 mm
Depth of Field.....112 mm – 5 mm
Power Supply.....110/120V, 220/240V

Video Colposcope Product Numbers

88000 Welch Allyn Video Colposcope Vertical Stand with RS232
88002 Welch Allyn Video Colposcope Vertical Stand with RS232-UK
88004 Welch Allyn Video Colposcope Vertical Stand with RS232-Europe
88006 Welch Allyn Video Colposcope Vertical Stand with RS232-Australia
89000 Welch Allyn Video Colposcope Swing Arm Stand with RS232
89002 Welch Allyn Video Colposcope Swing Arm Stand with RS232-UK
89004 Welch Allyn Video Colposcope Swing Arm Stand with RS232-Europe
89006 Welch Allyn Video Colposcope Swing Arm Stand with RS232-Australia

WelchAllyn™

The Welch Allyn®

VIDEOPATH™

COLPOSCOPE

Medical Device Depot
Inc.

www.medicaldevicedepot.com
Toll Free 1-877-646-3300



Multiple uses from a
single source.

We call it VideoPath because it's the path to more and more video procedures from a single platform. VideoPath gives you a foundation to build on, a way to increase the video capabilities of your practice indefinitely, one step at a time.



VIDEO  PATH™

Available outside the U.S. in 1997

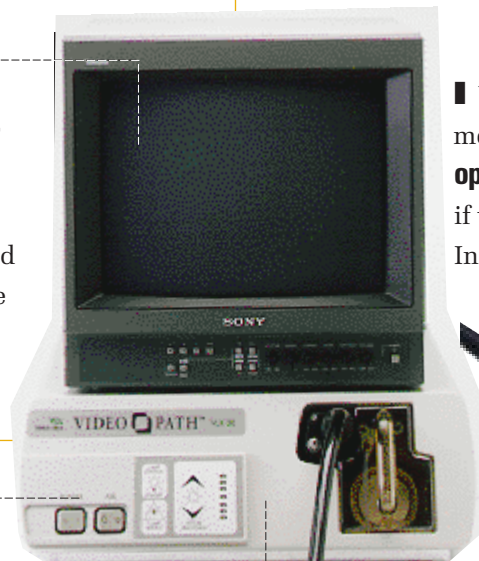
A platform you can build on

VideoPath's light source and monitor provide **a platform for multiple video procedures**. As more procedures are added, overall cost is comparable to and eventually less than stand-alone instruments

VideoPath's proximal camera module allows you to **convert your optical instruments to video**, even if they're other manufacturers'.

Instruments like:

- rhinolaryngoscope
- otoscope
- hysteroscope
- laparoscope



VIDEO PATH™

Modular design gives you **access to a whole family of dedicated VideoPath instruments**, including products currently available (VideoPath sigmoidoscope and VideoPath colposcope), and instruments in development that will seamlessly integrate with VideoPath



Specifications

Focal Length.....300 mm
Magnification.....4.5 x – 25 x
Field of View..... 66 mm – 14 mm
Depth of Field.....112 mm – 5 mm
Power Supply.....110/120V, 220/240V

VideoPath Colposcope Product Numbers

88100 VideoPath Colposcope Vertical Stand
88110 VideoPath Colposcope Vertical Stand with RS232
89100 VideoPath Colposcope Swing Arm
89110 VideoPath Colposcope Swing Arm with RS232

Available outside the U.S. in 1997

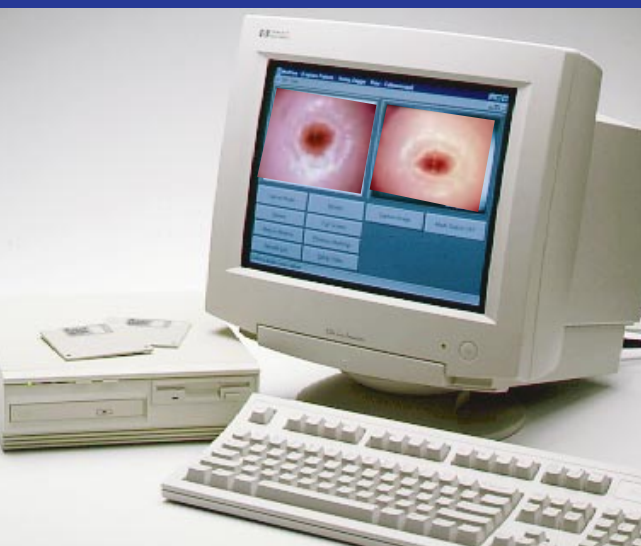


Two models to choose from—the standard VideoPath system and the “telemedicine-ready” VideoPath with the ability to capture, freeze and store images directly from the instrument

Choose from two stands—vertical and swing arm

It changes the way you'll manage your future

The colposcope you're buying today
opens a world of possibilities for tomorrow



- The colposcope has a built-in RS232 communications board that makes the instrument "telemedicine-ready" for the future and ensures your current system will not become obsolete
- Our image management system, currently under development, will allow for future ability to transmit and receive video images from remote locations
- The capabilities of the system you're getting today will help you to provide better education, training and patient care in the health care environment of tomorrow