

Virginia Beach Area User Group Meeting  
June 18, 2019



# Innovyze Overview

## Wet Infrastructure Engineering & Asset Management Solutions

Keith Hodsdon, Sr., P.E.  
Regional Sales Manager

Jim O'Keefe  
Client Service Manager

**Innovyze**<sup>®</sup>  
Empowering water experts

# Innovyze Portfolio



Water Distribution  
Modeling & Analysis



Sewer/Storm Modeling  
& Flood Analysis



Drainage/Stormwater  
Design



Asset Management



Operational Analytics



## Water Distribution Modeling & Analysis

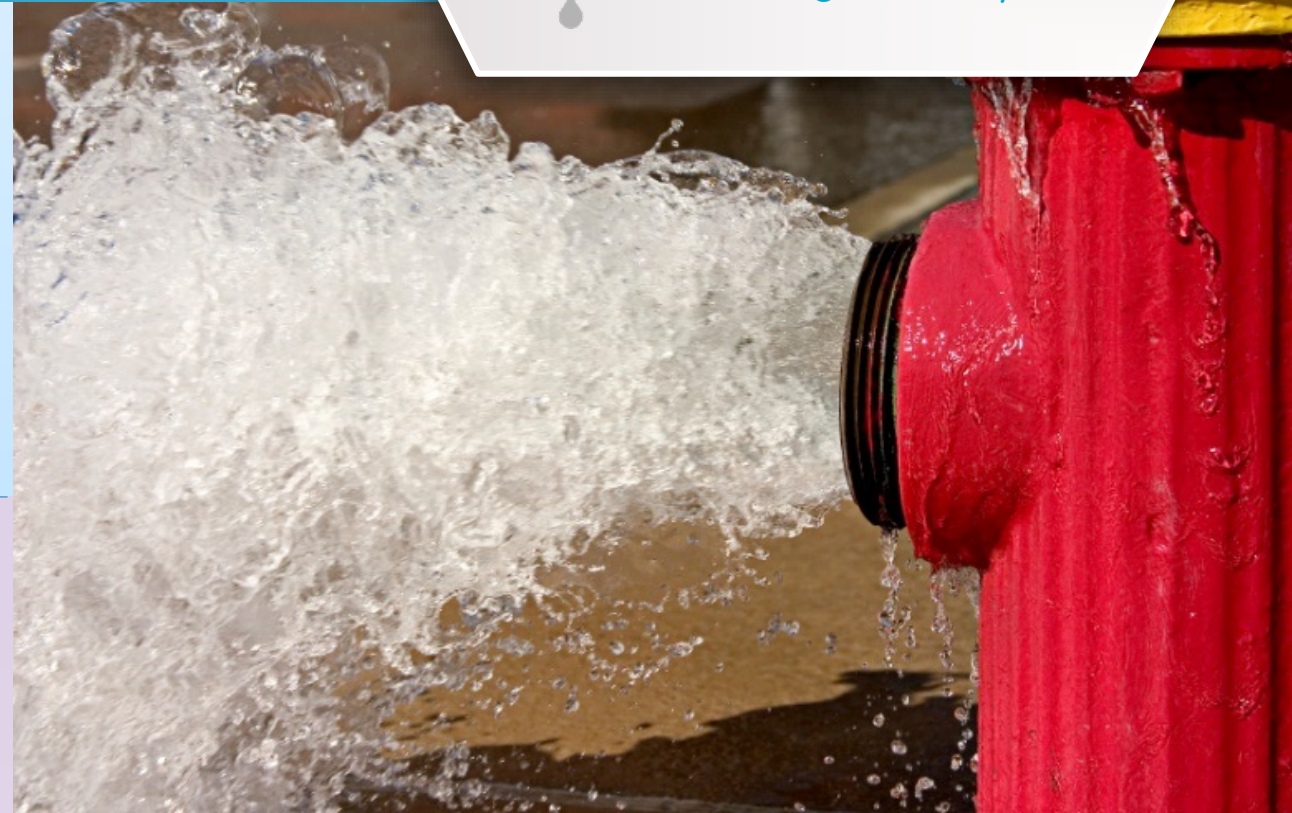
 InfoWater

 InfoWater  
Pro

 InfoWorks  
WS Pro

### PRODUCT FAMILIES

- Master Planning
- Demand & Fireflow Management
- Water Loss & Non-Revenue Water
- Water Quality
- Surge & Transient Analysis
- Energy Management
- System Optimization
- Unidirectional Flushing
- Emergency Response Planning
- Pressure Zone Management
- Regulatory Compliance



*"ArcGIS-centric **InfoWater** and **InfoSurge** allow our engineers and GIS professionals to work synergistically and reliably share critical modeling information. They will help us optimize our capital improvement, sustainability and resiliency programs."*

**- Municipal Department of Public Utilities Client**



## Sewer/Storm Modeling & Flood Analysis

 InfoWorks  
ICM

 InfoSWMM

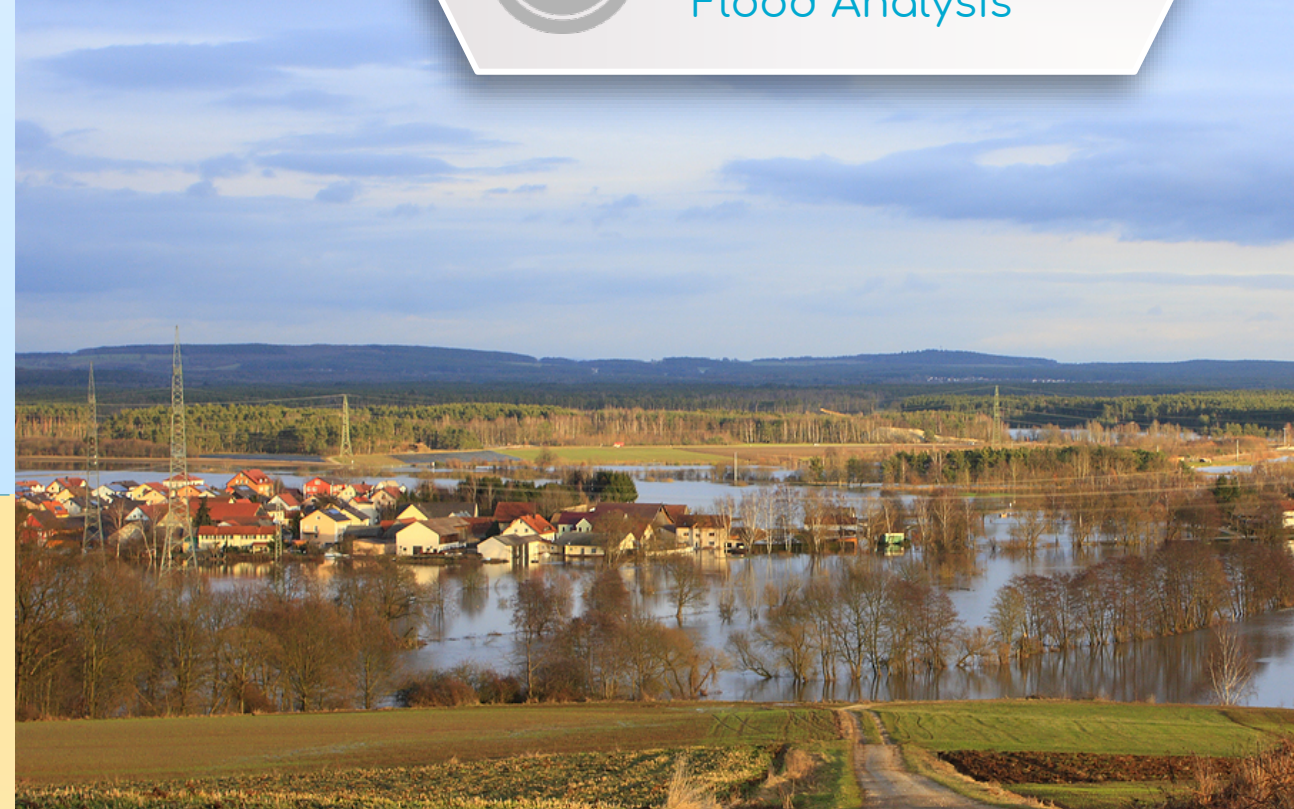
 XPSWMM

 XPStorm

### PRODUCT FAMILIES

 InfoSewer

- Sediment Transportation & Water Quality
- Pollutant Tracking
- System Optimization
- Emergency Response Planning
- Regulatory Compliance
- NFIP Flood Mapping
- Flood Risk Management
- I&I Management
- Sewer Overflow Management
- Irrigation & Drought Management



*“We are extremely impressed with the rich functionality, comprehensive capabilities and ease-of-use of **InfoWorks ICM**. You can tell immediately that the software was designed by people who devoted countless hours to working with complex hydraulics models.”*

**- Water Group in Spain**



## Drainage/ Stormwater Design

 XPDrainage

 XPStorm

### PRODUCT FAMILIES

- Pre-Site Planning
- Residential Site Development
- Commercial Site Development
- Stormwater System Retrofits
- Green Infrastructure Design (LID, SuDS, WSUD, BMP)
- Water Quality Volume Assessments
- Detailed channel, swale, culvert, pipe and manhole design
- Graphical flood flow modeling
- Catchment runoff modeling



*"Design is definitely easier on XPDRAINAGE, and it's more foolproof. If there is a mistake, it's easier to spot. It's also easier to check the design information if you're a senior engineer, making sure everything is fluid and running correctly."*

**- Consulting Firm in Louisiana**



## Operational Analytics

 IWLive  
Pro

 ICMLive

 Info360

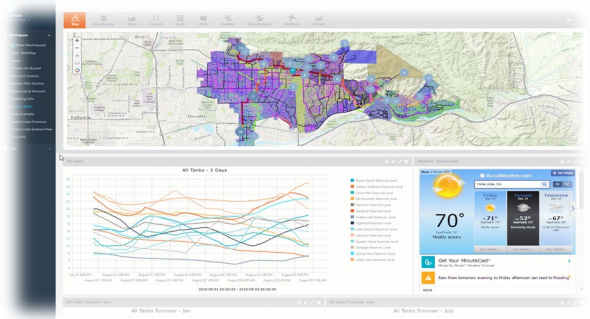
### PRODUCT FAMILIES

- Real-time operational monitoring
- Performance optimization
- Operational forecasting
- Operator Training
- Anomaly Detection
- Early Warning System
- Mass Balance & Water Audits
- AMI/AMR Diurnal Development
- Real-time hydraulic model Calibration
- Predictive analytics

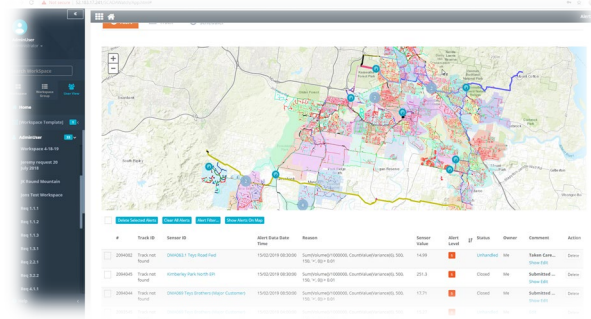


*"SCADAWatch equips us with real-time operational data that help us maintain highly calibrated hydraulic and water quality models, driving more confident decisions for optimal performance of our water distribution system."*

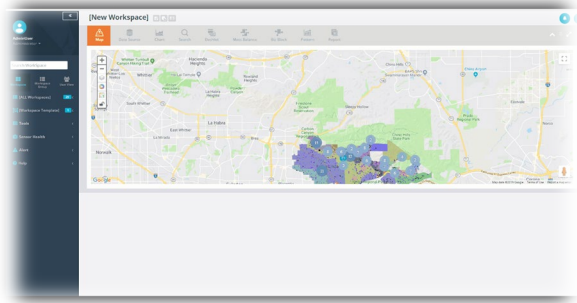
**- California Water Agency**



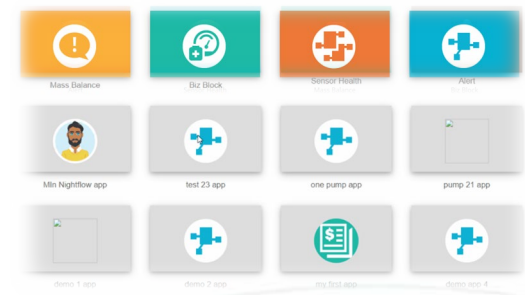
Data Integration



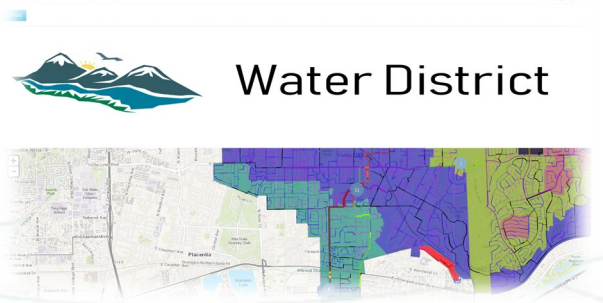
24/7 Monitoring



Data Integrity



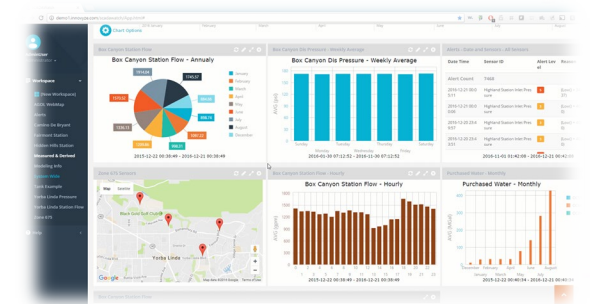
Biz Blocks



Reporting



Anytime, anywhere access



Dashboarding

# Operational insights for utilities



Info360 leverages your data investments to empower operators and engineers to quickly monitor, analyze, respond to, and optimize their water and wastewater operations.

**Innovyze**<sup>®</sup>





## Asset Management

 **InfoAsset**<sup>™</sup>  
Planner  
Formerly InfoMaster

 **InfoAsset**<sup>™</sup>  
Manager  
Formerly InfoNet

 **InfoAsset**<sup>™</sup>  
Online

 **InfoAsset**<sup>™</sup>  
Mobile

### PRODUCT FAMILIES

- Water and sewer network business intelligence
- Risk-based rehabilitation planning
- Proactive operational planning
- Infrastructure data validation
- Life-Cycle Cost Analyses
- Condition assessment management
- CCTV data management
- Operational maintenance planning



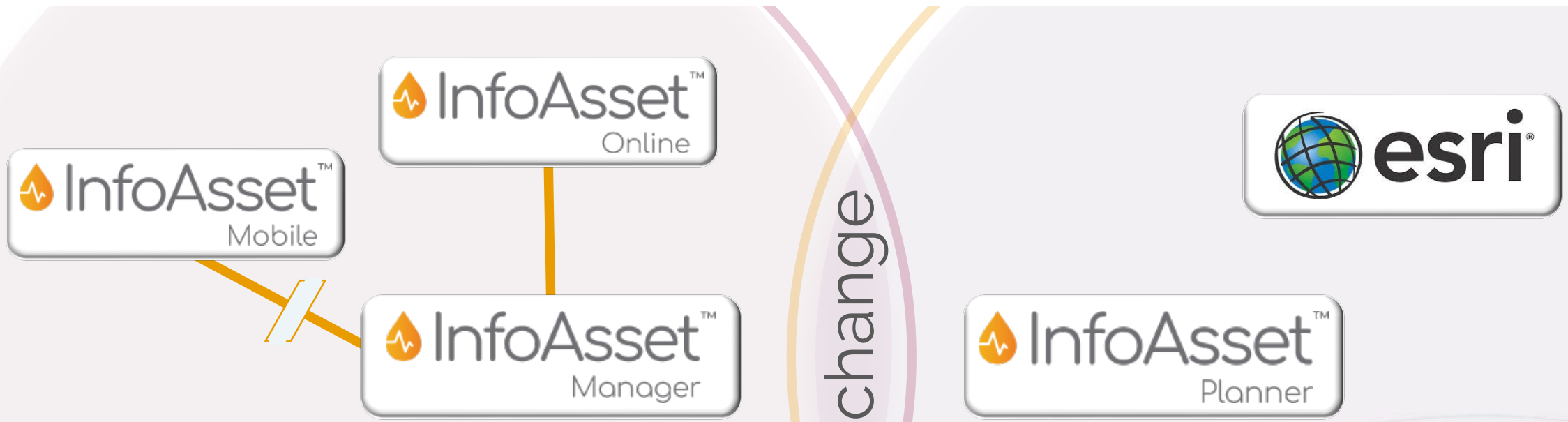
*"InfoMaster provides an intelligent enterprise management solution with actionable information that meets all the requirements we were looking for. By integrating condition assessment and analytics, it enables us to fine-tune asset performance and prioritize maintenance, repair, and capital investments. This will help us in our drive to optimize our sewer system performance, reduce costs and improve customer service"*

**- Utah Sewer District**

# InfoAsset: full infrastructure life cycle management



# InfoAsset: leverages the best in breed technology



*Tactical operations management integrated within the Wallingford H&H framework.*

*Strategic asset performance & risk modeling built on the Esri ArcGIS platform.*

*Robust data integration*

**Innovyze®**

For existing customers:

**InfoNet™**



 **InfoAsset™**  
Manager

**InfoNet™ Mobile**



 **InfoAsset™**  
Mobile

**InfoMaster®**



 **InfoAsset™** \* *NEW*  
Online

 **InfoAsset™**  
Planner

**Innovyze®**

# What is InfoAsset™ ?

Planner

- ArcGIS-centric solution for condition assessment, capital planning, and asset prioritization
  - Support for ArcGIS Pro in 2019
- Specifically designed for wet infrastructure
  - Client and industry driven approach
  - Fully supports hydraulic model integration
- Robust bottom-up analytical approach
  - “*Know what you own*” in detail
  - Assess and prioritize within an asset class
- Can be implemented in-house or with consultant support
- Data easily accessed by any cross-asset optimizer

# Benefits of InfoAsset Planner

1. **CCTV analysis:** defect analysis & validation, video linking, map geo-coding
2. **Pipe & valve criticality** analysis
3. **Degradation** analysis
4. **Risk** analysis (LOF, COF)
5. **Rehab-Replace decision** model
6. **Lifecycle Cost Analysis** (LCCA)
7. **Organize, Prioritize & Track** projects
8. **Maps, graphs, and reports** (HTML and PDF)



With InfoAsset, our users can defend and justify that they are:

- doing the right thing
- on the right asset
- for the right reason
- at the right time
- at minimal cost
- and minimal risk

while at the same time achieving an agreed level of service to all stakeholders.



**Innovyze**<sup>®</sup>

Empowering water experts