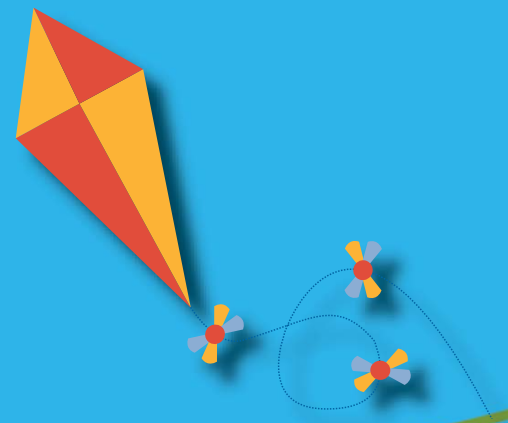


INTERNATIONAL CONFERENCE 2007

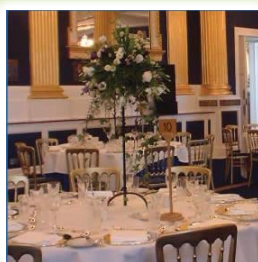
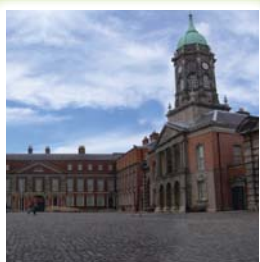
February 8th - 10th, 2007

“Vision into Practice”

Making Quality a Reality in the
Lives of Young Children



Dublin Castle, Ireland



2ND ANNOUNCEMENT

Welcome note

As promised at our very successful first conference 'Questions of Quality' in September 2004, I am pleased to invite you now to the Second International Conference of the Centre for Early Childhood Development and Education (CECDE).

Hosted by the Irish Department of Education and Science, this event will again benefit from the historical and beautiful setting of Dublin Castle.

This time we chose the theme 'Vision into Practice – Making Quality a Reality in the Lives of Young Children'. Policies and practice frameworks are important but achieve nothing without commitment and implementation. This conference will look at policies and practice as agents for change and their impact on the lives of young children.

Together with my colleagues in the Centre for Early Childhood Development and Education I am looking forward to meeting you in Dublin next February.



Heino Schonfeld, Director CECDE

Who Are We?

The CECDE was launched in Ireland in 2002 by The Minister for Education and Science. Our overall purpose is to develop and co-ordinate early childhood care and education in pursuance of the objectives of the Government White Paper 'Ready to Learn'. We are co-managed by 2 educational institutions, the Dublin Institute of Technology and St. Patrick's College, Drumcondra. Our three main objectives are

- To develop a quality framework for early childhood care and education.
- To pilot targeted interventions for children who are disadvantaged and those who have special needs.
- To advise the Department of Education on policy issues in the area.

On May 30th, 2006, the Minister for Children Brian Lenihan, TD launched Síolta – the National Quality Framework for Early Childhood Education in Ireland (www.siolta.ie) and we are now beginning a period of implementation and evaluation of this Framework. For more information on the work of the CECDE, visit our website at www.cecde.ie.

Who Should Go?

This conference is aimed at practitioners, policy makers, parents, academics, students and anyone with an interest in early childhood care and education (ecce). It will provide a valuable opportunity for all those working with young children to actively participate in a dynamic forum which will address key questions of quality in practice. This is a chance for delegates to share information and experiences of practice; to discuss and debate current research findings; to exchange innovative policy approaches and to network with others who are committed to making a difference in the lives of young children.

Keynote Speakers

Jacquie Roberts is Chief Executive of the Scottish Care Commission which regulates and inspects all care standards in Scotland.

Paavi Lindberg is a Senior Planning Officer at the STAKES National Research and Development Centre for Welfare and Health in Finland. STAKES conducts research on living conditions among children, the prerequisites for children's development, the position of families with children, and family policy.

Brenda Taggart is Principal Investigator and Research Coordinator for the Effective Preschool and Primary Education 3-11 (EPPE 3-11) project, based in the Institute of Education in the University of London. The EPPE Project is a longitudinal study funded by the DfES investigating the effectiveness and long-term impact of pre-school provision.

Prof. John Coolahan, educationalist, author and former Professor of Education at NUI Maynooth, has been extensively involved in the development of educational policy in Ireland and will discuss some of the issues surrounding policy implementation.

Dr John Bennett, who led the Starting Strong 2 team, will report on the second round of OECD country reviews.



Outline Programme

Thursday 8th February

- 3pm **Registration**
- 4pm Opening by **Mr Brian Lenihan, Minister for Children**
- 4.30 Welcome by **Heino Schonfeld, Director CECDE**
- 5pm Keynote Speaker - **Dr John Bennett**
 "New policy conclusions from Starting Strong II : an update on the OECD early childhood policy reviews"
- 6pm **Welcome Reception - Dublin Castle**
- 7.30 **Irish Night**

Friday 9th February

- 9am **Registration**
- 10am Keynote Speaker - **Paavi Lindberg**
 "STAKES: Finish National Research & Development Centre for Research and Health"
- 11am Coffee
- 11.25 **Symposium Session 1**
- 1.15 Lunch
- 2.30 Keynote Speaker - **Jacque Roberts, Scottish Care Commission**
- 3.30 Coffee
- 3.50 **Symposium Session 2**
- 5.30 Close
- 8pm **Gala Dinner - St. Patrick's Hall, Dublin Castle**

Saturday 10th February

- 9.30 Keynote Speaker **Brenda Taggart**
 "Effective Pre-school and Primary Education (EPPE 3- 11) Project;The Power of Pre-school"
- 10.30 Coffee
- 11am **Symposium Session 3**
- 12.50 Conference Close - **Professor John Coolahan**
 "Realising the Vision;The Changing Context of our Early Childhood Education"
- 1.50 Lunch

Symposium Session 1 - Friday 9th February - 11:30am

	NAME	ORGANISATION	ABSTRACT TITLE
A	Michael F. Kalinowski, Ed.D. Associate Professor	Department of Family Studies University of New Hampshire	Elegant Interior and Exterior Play Spaces for Young Children
	Thomas Moser, Professor	Vestfold Univeristy College, Norway	Doing indoor spaces - Pedagogical implications of redesigning kindergarten rooms
	Carol Duffy, Training & Development Officer	IPPA	Creating and Promoting Outdoor Learning Environments
B	Eleanor Mearns/Sinead McShane	NIPPA	The Media Initiative for Children, 'Respecting Difference' - Diversity and Inclusion in the Early Years
	Ruth A. Doran	St. Jude Preschool Florida Atlantic University Palm Beach Atlantic University	Parents, Preschoolers, and Fairy-tale Media in Print and Animated Film: An Exploratory Case Study
	Dr Maire Mhic Mhathuna, and Una Hill	DIT and Bonnybrook Day Nursery,	Intercultural Books in Practice
C	Carol Griffiths Pam Graham	Northumbria University	Parents as clients or parents as partners?
	Anne Boyle	St. Patrick's College, Dublin	Equality and dialogue in the involvement of Traveller parents in the preschool education of their children
	Gay Wilgus, PhD	The City College of the City University of New York	"If you carry him around all the time at home, he expects one of us to carry him around all day here and there only TWO of us!": Parents', teachers' and administrators' beliefs about the parent's role in the infant/toddler center
D	Dr Christine McMaster / Dr Celia Kennaghan	Population Health Children & Young People's Team	Working together to support child development: Using parent reported measurement of developmental concerns to inform early intervention decisions
	Dr Rita Chawla-Duggan	Dept of Education, University of Bath	Good Practice with Fathers: An activity theory analysis of the work of Father development workers
	Áine Uí Ghiollagáin	Cúram Irish Parent and Carer NGO	The Challenge of Supporting Children in All Environments: A Proposal for Universal Funding
E	Lindsey Carty	St. Brigid's Infant School, Finglas.	THE VIEWS OF YOUNG CHILDREN ON LEARNING SPACES IN SCHOOLS
	Gretta Murphy,	Kilkenny Co Childcare Committee	Supporting active participation, and empowerment for young children in an early childhood care and education service.
	Professor Patrick Costello	University of Wales, NEWI	Developing Philosophical Thinking in Early Childhood Education
F	Máire Corbett	NCNA	Other ways of listening
	Dr. Mary Daly, Arlene Forster, Dr. Rosaleen Murphy and Avril Sweeney	NCCA	Portraiture – listening for children's stories
	Fergus Hogan and Máire O'Reilly	Waterford Institute of Technology,	Listening with children: Research, Policy and Practice
G	Sue Bingham, Dr. David Whitebread,	University of Cambridge	Supporting Self Regulation in Conflict Situations within an Early Years Setting
	Eva Maagero	Norway	"We go for the crabs". Dialogue and democracy in kindergarten.
	Ellen Beate H. Sandseter	Queen Maud's College of Early Childhood Education Norway	Risky play among four and five year-olds in preschool - A study of children's needs and preschool staff's tolerance for risky play with a focus on sex differences and types of preschools
H	Brenda Molloy	Community Mothers Programme	Community Mothers Programme Care In The Community
	Teresa Ogradzinska MA	Comenius foundation for Child Development, Poland	Local strategies for addressing early childhood education
	Noelle Spring	The Katharine Howard Foundation	The Parent & Toddler Group Initiative; a special project within the National Childcare Investment Programme 2006 - 2010
I	Thomas Walsh	CECDE	The Impact of Research on Quality of Early Childhood Care and Education Practice in Ireland
	Marlene McCormack,	IPPA	Enhancing Language and Literacy in Early Childhood
	Lita Katherine Haddal	Wisconsin Child Care Information Center	Reaching the Teaching: Making Research Accessible to Practitioners

Symposium Session 2 - Friday 9th February - 4.00pm

A	Dr. Philomena Donnelly	St Patrick's College, Dublin	Transitions: the Experience of Twelve Refugee Children and their Families Starting School in Ireland
	Mary O'Kane,	Dublin Institute of Technology	The Transition from Preschool to Primary School for Children in Ireland
	Bridget M Nagle B.Ed	Galway, Ireland	A case study of teachers working with children of cultural and linguistic diversity in early childhood settings

B	Fintan McCutcheon	Educate together	From Multi-ethnic to Multi-cultural
	Phil Lynch	IPPA	Diversity and Inclusion - means men too!
	Joanne Delany and Ciara McGlade	Enable Ireland	Communication with Culturally Diverse Families'
C	Valerie Rhomborg	Mothercraft Institute for Early Development	Co-existing with different cultures: implications for Early Learning Environments
	Maria O'Dwyer	CECDE	Moving Beyond Grimm's Fairytales for Representations of Black and White: Diversity as an Integral Component of Quality Provision in Early Childhood Education.
	Jenny Bernard	HSE West	Audit of Provision under Article 4, Development of the Child, in community-based groups funded by the HSE in County Mayo.
D	Janet Preston	NIPPA	"It Takes a Village"-Children,Artists,Parents,Teachers/Leaders."Supporting Young Children Through The Arts"
	Dr Concepta Conaty	Dept of Education & Science, Ireland	The Parent as Prime Educator within a Home-Community and School Context
	Jan Forde	Sheffield, UK	The Role of Community Teachers in the Development of Quality Early Childhood Care and Education
E	Carmel Brennan	DIT/ IPPA	From a Pedagogy of the Individual to a Pedagogy of Connection: the place of play
	Keith L. Pentz, Deirbhile Ni Craith and Anne Fay	Kaplan Early Learning Co, North Carolina INTO	Scaffolded Play as a Catalyst for Neurological Development Curriculum in the Infant Classes in Ireland: Creating Learning Experiences
	Dr Elizabeth Dunphy,	St Patrick's College, Dublin	Effective Pedagogy in The Early Years:A Review of The Literature and Implications for Practice in Infant Classes in Ireland
F	Soren Gundelach, John andersen, Kjeld Rasmussen,	UdviklingsForum, Denmark	Curriculum in Danish pre-school institutions - implementation, process contents and significance
	Biljana C. Fredriksen,Assistant Professor,	Vestfold University College, Norway	Didactical creativity - creating stimulating space for children's development
	Imelda Graham	Barnardos National Children's Resource Centre,	"THE CHALLENGES OF BECOMING A PROFESSION"
G	Gill McGillivray	Newman College of Higher Education	Mirror, mirror, on the wall:reflections on the early years professional.
	Professor Denise Hevey, Eunice Lumsden & Sue Moxon:	The University of Northampton	The Early Years Professional Role
	Kathryn Blackburn	NCNA	Can we assume that training improves quality in childcare services?
H	Maresa Duignan	CECDE	Practical Professionalism?
	Elaine Hallet	University of Derby,	The impact of an Early Year's Sector - Endorsed Foundation Degree on experienced practitioner's professional practice.
	Deirdre Breatnach and Dr Jennifer Sturley,	University of Limerick	Working Together to Develop the 3RS' - an exploration of roles, responsibilities and relationships between ECCE students and infant teachers in Irish primary school classrooms
I	Petra Luck & Susan O'Neill	Liverpool Hope University	Continuing Professional Development - how can we support it?
	Rose Murphy-Kavanagh,	Waterford County Childcare Committee	Professional Development Portfolio,A Tool for Childcare Practitioners

Symposium Session 3 - Friday 10th February - 11.00am

A	Anne Farr	Newman College of Higher Education, Birmingham	Practitioner research - changing practice, policy and professional development.
	Eunice Lumsden	The University of Northampton	Developing the Early Years Workforce: Student perceptions of the Sure Start Endorsed Early Years Foundation Degree
	Imelda Duffy	University of Ulster,	Developing Quality in Early childhood Care and Education Services; the impact of a continuing professional development programme
B	Fiona Shaw	NIPPA	KeyHole Autism Project - Pre-school Children with Autism Developing a visually structured approach
	Dr Kaye Cederman	University of Limerick	Playful Challenges: Quality Early Intervention in Early Childhood Settings
	Jean Whyte and Fiona Daly	Children's Research Centre Trinity College Dublin	How best to support young children with special educational needs? One possible approach
C	Dr. Patrizia Albanese	Ryerson University - Toronto, Ontario, Canada	Formal and Informal Networks of Care & \$7/day Childcare in Small-town Quebec (Canada): Preliminary Findings
	Richard Tipping	Derbyshire County Council, UK.	"When the village isn't enough" "Can the UK government's Change for Children Programme really address the needs of young children who live in rural areas?"
	Dr Noirin Hayes / Siobhan Bradley	DIT	It's not how much but how ... investing in early childhood care and education

D	Catharine Tozer, Data Analyst,	Ontario Early Years Centre & University of Toronto's	Improving school readiness one village at a time in Ontario, Canada: Early Years parenting centres and teacher opinion of 5 year olds' preschool development using the Early Development Instrument
	Siobhan Fitzpatrick & Colum Conway	NIPPA	Making a Difference: Making it Work for Young Children
	Dr. Katherine Zappone and Geraldine French,	The Childhood Development Initiative, Tallaght West	The Childhood Development Initiative; developing quality services and enhancing quality of existing provision in Tallaght West
E	Hasheem Mannan, Jean Ann Summers, Ann P. Turnbull, Denise J. Poston;	University of Kansas	Early Childhood Services for Children with Disabilities and their Families: Can International experiences guide early childhood services in Ireland?
	Mary Meany, Una O'Connor	Dublin, Ireland UNESCO Centre, University of Ulster	Getting in, Getting on and Getting along The role of Parents as Partners in the Education of Children with SEN
F	Associate Professor Ingeborg Tvetter Thoresen,	Vestfold College, Norway	Changes and challenges in a recent ECEC-policy in Norway
	Dr Mathias Urban	Martin-Luther University Halle Wittenberg	Strategies for change. A systemic comparative perspective on early childhood care and education systems
	Bernard McDonald	Ombudsman for Children's Office	Children's Participation as a Fundamental Human Right: The Role of the Ombudsman for Children's Office
G	Debbie mullen	NCNA	How support from professionals can improve the quality of a service and thus have an impact of children and families lives
	Vaclav Sneiderger	International Step by Step Association	Making a Difference with Pedagogical Standards
	Jacqueline Fallon,	CECDE	Engaging with Practitioners through Síolta, the National Quality Framework in Early Childhood Education: A Workshop Model.
H	Pan, Yuejuan	Beijing Normal University, China	Teachers' participation in program quality evaluation in Beijing
	Sadhbh Devlin	Forbairt Naíonraí Teo	Developing Professionalism in the Naíonra
	Helena Luis, Madalena Alves, Arlete Goncalves, Gabriela Amaro, Helena Sousa, Julieta Vieira, Nelia Monte, Centro Social Interparroquial de Santarem, Maria Jose Calheiros, Rosa Montez, Teresa Cunha, Agrupamento D. Joao II	Escola Superior de Educacao de Santarem, Portugal	Multiple perspectives on quality - partnership on quality evaluation and professional development in early childhood institutions
I	Ena Shaw Senior Practitioner	NIPPA	All Ireland Centre of Excellence Award
	Ashling Hooper National Advisor NCNA National Children's Nurseries Association		
	Lilian Joyce, Quality Officer	IPPA	Supporting professionalism through improving quality in School-Age-Childcare services
	Nicole C. Green,	Nanyang Technological University, Singapore	A critical look at 'quality': Important (possible) questions and inquiries in early childhood educational communities

Conference Registration Form

1. DELEGATE DETAILS: (One form per delegate)

Surname First Name Title
 Position Organisation
 Address
 City Postal Code Country
 Telephone: Fax:
 E-Mail Address

2. REGISTRATION FEE

Early registration Fee prior to 19th January 2007 €300 per delegate

Later registration Fee after 19th January 2007 €400 per delegate

Total A: €

Fee includes full day attendance, lunch, conference materials & attendance at Welcome Reception. Full prepayment is essential to guarantee your booking.

3. ACCOMMODATION:

I require accommodation I do not require accommodation

Total B: €

Please indicate your hotel choice in order of preference. Accommodation will be allocated on a first come, first served basis:

Hotel 1 Hotel 2 Hotel 3

Hotel	Single Room	Double Room	Hotel	Room Rate Only
The Morrison Hotel	€240 per night		Jurys Christchurch Inn	€110 Thursday night
The Paramount Hotel	€115 Thursday night	€135 Thursday night	Jurys Christchurch Inn	€140 Friday night
The Paramount Hotel	€160 Friday night	€180 Friday night		

*Room rates for the Morrison and the Paramount hotels include breakfast.

Arrival Date Departure Date Number of Nights Cost per night

Comments/Special Needs:

4. SOCIAL PROGRAMME

Date	Function	Cost	Tickets	Total
Feb 8 th	Welcome Reception	N/A	<input type="text"/>	€ <input type="text"/>
Feb 8 th	Irish Night	€25	<input type="text"/>	€ <input type="text"/>
Feb 9 th	Gala Dinner	€85	<input type="text"/>	€ <input type="text"/>

Total C: €

Please confirm any dietary requirements

5. WORKSHOPS (for full details on the workshops please see overleaf)

Please select your preferred workshop for each session

SESSION 1 – Friday 8th at 11.30AM

Option A Option B Option C Option D Option E Option F Option G Option H Option I

SESSION 2 – Friday 8th at 4.00PM

Option A Option B Option C Option D Option E Option F Option G Option H Option I

SESSION 3 – Saturday 9th at 11.00AM

Option A Option B Option C Option D Option E Option F Option G Option H Option I

6. PAYMENT METHOD Full prepayment is essential to guarantee your booking.

Total A+B+C: €

Please indicate your chosen method of payment:-

Cheque: I enclose a cheque made payable to Conference Partners Ltd. for € as payment for persons.

Credit Card: Visa Mastercard Access

Card Number: Expiry Date:

Cardholder Name: Invoice

(Please supply Purchase Order No. if available.) PO Number

Contact Name for billing

Address

Terms and Conditions:

- § Please note that early booking is essential as places will be limited.
- § All registration and accommodation will be allocated on a first-come-first served basis.
- § Cancellations received after the 19th January 2007 will not be re-refundable and 1 nights accommodation will be charged for accommodation cancelled after 19th January 2007.
- § Please send completed registration form along with payment to:
- § Leah Duxbury, Conference Partners Ltd, 2nd Floor Heritage House, Dundrum Office Park, Dublin 14

Venue



The venue we have chosen for the conference is Dublin Castle. Few conference centres anywhere in the world can claim a location so steeped in history as Dublin Castle Conference Centre. Although the original structure of the Castle was built in the early 13th century, the importance of the site can be traced back even further. Archaeological investigations have confirmed its significance as an important site in Viking and even pre-Viking times. It has been at the heart of Dublin life for centuries before King John in 1204. The latest addition is the modern Conference Centre, which was designed and equipped for Ireland's Presidencies of the European Community on the site of the excavated Corke Tower and Castle Moat.

Social Programme

Thursday 8th February 2007 – Welcome Reception

A drinks and finger food reception will be hosted in the historic State Apartments of Dublin Castle. Cost included in registration fee.

Thursday 8th February 2007- Irish Night

This optional night will include dinner, traditional Irish music and a display of Irish dancing. The venue is the Arlington Hotel located 10 minutes walk from Dublin Castle.

Cost: €25.00 per person for dinner and entertainment.

Friday 9th February 2007 – Gala Dinner

St. Patrick's Hall is one of the most significant and prestigious rooms in Ireland. Here the inaugurations of the President of Ireland take place, as do other important State Functions including State Banquets for visiting Heads of State. The evening will begin with a drinks reception, followed by sumptuous food and an exciting entertainment programme

Accommodation

Accommodation is available in the city centre across a wide range of price categories. You can avail of:



The Morrison Hotel Four Star ****

Located between the Ha'penny Bridge and Capel Street Bridge overlooking the river Liffey. Designed by John Rocha the hotel has 95 bedrooms all equipped with high-tech efficiency to suit the modern traveller. 10 minutes walk from Dublin Castle.

The Paramount Hotel Three Star ***

This hotel is one of Dublin's most cosmopolitan of Hotels, tastefully designed to the very elegant 1930's style of architecture. Situated on the edge of the famous Temple Bar Area the hotel offers 70 luxurious ensuite bedrooms each appointed to the highest of international standards with data point connection. Across the road from Dublin Castle



Jurys Christchurch Inn Three Star ***

Modern attractive rooms capable of accommodating up to 3 adults or 2 adults and three children. All rooms are ensuite with multi-channel TV, tea/coffee making facilities, radio and DD phone. Located in the heart of Dublin City, opposite Christchurch Cathedral, the Inn has an informal restaurant and lively pub. 5 minutes walk from Dublin Castle.

Further Information

For further information and bookings, Please contact: Sinead Marrinan, Conference Partners Ltd., 2nd Floor, Heritage House, Dundrum Office Park, Dublin 14. Tel: +353 | 296 8688 Fax: +353 | 296 8678. Email: sinead@conferencepartners.ie Conference website www.cecde.ie