

**A publication for the friends and families of Cray Youth and Family Services, Inc.**

Office: 332 Highland Ave.  
New Castle, PA 16101  
(724) 654-5507  
[www.CrayYouth.org](http://www.CrayYouth.org)  
[www.ConfluenceCoffee.org](http://www.ConfluenceCoffee.org)

### ***Cray's Board of Directors***

**Mr. Larry Kelly, Esq., President**  
*Luxenberg Garbett Kelly & George*

**Mr. Norman Moses, Vice President**  
*Retired, Lawrence County A.R.C*

**Mr. Brad Chill, Secretary/Treasurer**  
*Retired, Lawrence County A.R.C.*

**Mrs. Ramona Nathan**  
*Retired, NC Area School District*

**Mr. Eugene Gabriel**  
*Ameriprise Financial*

**Mr. Chip Rickenbach**  
*Retired, Castle Mold and Tool, Inc.*

**Mr. Scott McCaskey**  
*West Middlesex Area School District*

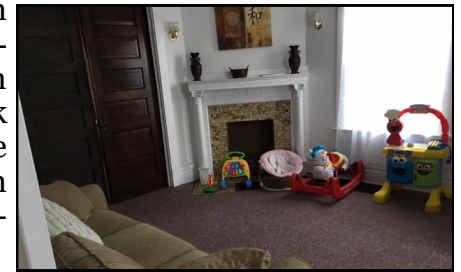
**Mrs. Kimberly Aven**  
*Aven Fire Systems*

**Mrs. Candace Turpack**  
*Chase Bank*

## **VISITATION HOUSE GROWING**

What happens when the court system mandates that a family needs a temporary separation? Cray's Family Reintegration program and Visitation House aims to help those families meet court requirements and reunite for a happy ending.

The Visitation House on the North Hill is a safe and 'homey' atmosphere where parents and children can visit throughout their work with the court system. Inside there are toys, games, a kitchen where they can bake cookies together, etc.



With Cray supervision and guidance, these families can spend time together, learn to be a support system for each other, and ultimately strive for reunification of their family unit.



These Cray programs serve over 30 families and continues to be seen as an asset and great resource for families.

## **HELP END TRASH BAG SUITCASES**

Too often, kids that come into Cray care, come in with only the clothes on their back or all of their belongings stuffed in a large trash bag.



It's heartbreaking and Cray staff are on a mission to seek support from the community so that every kid receives a duffle bag or backpack to transport their belongings until they can go home again.

We are seeking donations of duffle bags and personal care items (toothbrushes, hair brushes, shampoo, etc.). We are seeking items appropriate for babies all the way through teenage years. Items can be dropped off at Cray's main office: 332 Highland Ave.

# A Note From the Director



*Cray's Executive Director,  
David Copper*

It troubles me to report that Cray announced the closing of the Krause Youth Center on February 2. Krause has been in operation for over 18 ½ years and has served the needs of at-risk youth in crisis or in need of structured residential care. The Center provided care to over 3,600 youth during its life span. It created 10 – 12 jobs for Lawrence County residents and allowed for young people in need of the program to be served in their home community, often times staying in their home school while providing easier opportunities for family members to visit.

In addition, the program kept approximately 10 million dollars from public sources, in our community, which helped to benefit our local economy. The County invested \$250,000 to renovate the facility for our use and Cray repaid them \$500,000 in rent. Prior to Cray's commitment, the building had been slated for demolition.

The facility is closing at this time due to a lack of referrals and lack of adequate funding. The State and Federal governments have been decreasing funds for these types of services over the last number of years. It became impossible to sustain the program financially, even though an argument for the need of this type of service locally, could still be made.

So it saddens me to make this decision. This marks the end of an era for Cray in this community because we will no longer be providing residential care. We started as a boy's group home 32 years ago. At our peak, we were providing care for up to 33 youth in some form of residential care. As of the end of February 2017, we will be providing none. I wish I could report that conditions in this community have improved so much that there is no longer a need for such services, but unfortunately I cannot!

It also saddens me that we will be losing a reminder of a great lady and youth servant, Alma Krause. The facility was named in her memory. Alma was a lovely person who volunteered for Cray for over 20 years after a long career as a youth counselor at the New Castle Youth Development Center. The sign on the side of the building and her photo on the wall inside the entrance were a constant reminder of her and kept her memory alive for us.

Many thanks to all the dedicated employees who, over the last 18 ½ years, have taken such good care of our kids and who have worked so hard to make an extremely difficult time in the life of a child more bearable.

So things change, adjustments are made, and we move on. We try to remain flexible so we can respond to the ever changing needs of the kids we serve and the agencies who refer them. The one thing that remains constant, is our mission to serve the needs of kids in Lawrence County and our passion to do it to the best of our ability.

Cray will continue to provide a wide variety of services to the youth in our community. We appreciate all the support we receive from you in helping us to carry out our mission of "making life better for kids".



*Krause operated for 18 1/2 years  
and served more than 3,600 youth*



# Thank You

---

For your generosity this holiday season!

Every year Cray is humbled by the generosity of our community during the holiday season to help our kids and families. We are so grateful for your Christmas gift donations, financial donations, and volunteers who have helped with everything from decorating to stuffing envelopes, to making holiday parties fun! From the bottom of our hearts, THANK YOU!

---

## EVERY CHILD DESERVES A GIFT

More than 280 children received gifts through Cray's connection to community supporters this year! Special thanks to:

- Chevron
- Church of Genesis
- Erie Insurance
- The Shaffer Family
- The Esposito Family
- Lawrence County Board of Realtors
- Liberty Mutual Insurance
- New Castle Christian Academy
- and individuals who connected with Cray through an Angel Tree at The Confluence and through a request on Facebook
- Pet Smart
- American Postal Workers Union
- United Transportation Union
- Treloar & Heisel
- Walmart
- Wampum Women's Club
- Westminster College
- Toni Bullano

---

## THANKS FOR READING & RESPONDING



Every Christmas, Cray reaches out to supporters for financial gifts that benefit the agency all year long!

Thank you for responding to that request— this year Cray collected more than \$20,000 to support all of our programs!

Thank you for investing in our mission of 'making life better for kids'.

Thank you, employees of Steelite International, for 'adopting' Cray as your charity in 2016. We are so grateful for the partnership and appreciate your support!



**steelite**  
INTERNATIONAL



Big Brothers Big Sisters of Lawrence County

# Big and Little News

BBBS is funded in part by :



(724) 657-3680

bbbslawco@comcast.net

### Advisory Council Members

Chip Rickenbach: Chairperson  
 Chris Cunningham: Vice-Chair  
 Megan Fuchs: Vice-Chair  
 Tom Ford: Secretary  
 Don Hollerman: Treasurer  
 Jane Fobes  
 Amy Ford  
 Norm Fuchs  
 Miriam Gwin  
 Michelle Locke  
 Jay Martin  
 Pete Moniodes  
 Bernie Muckian

### BBBS Staff

BBBS Director: Allisyn Wolfe  
 Case Worker: Abigail Stambul

**CURRENTLY SERVING**

**74**

**KIDS**

BBBS of Lawrence County does not receive state or federal funding and operates through foundation grants and individual and corporate donations. Since 1995, we have matched over 600 at-risk youth with a caring mentor. Thank you for your support!

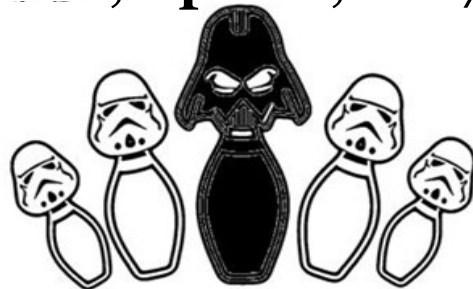
***BBBS aims to provide children who are facing adversity with strong, enduring, professionally supported, one-on-one mentoring relationships that change their lives for the better, forever!***

### **CELEBRATING WITH NEW MENTORING MATCHES!**

Frank & Chase	Keely & Olivia	Katarina & Natalye
Lori and Keaira	Abby & Allyonna	Corey & Nick
Marilyn & Egypt	Danielle & CaydenceLee	Katelyn & Nicole
Gina & Jamiya	Nicole & Emma	Hannah & Billie
Dee Dee & Tatiaynna	Riley & Khloe	

## Save the Date:

# Sat., April 8, 2017



# BOWL FOR KIDS SAKE

@ Colonial Lanes

### *GET INVOLVED!*

- Create a bowling team!
- Be a lane sponsor (\$150-1,200 includes varying levels of recognition for your business.)
- Be an in-kind sponsor (donate food, a service, or auction item)
- All proceeds stay in Lawrence County & benefit BBBS!
- Event raises about 20% of BBBS' annual budget!
- Visit [www.CrayYouth.org](http://www.CrayYouth.org) or call Allisyn at 724-654-5507 for more information.

### **HAPPY ANNIVERSARY, MATCHES!**

#### **5 Years:**

Gary & Mario  
 Bernie & Mike

#### **3 Years:**

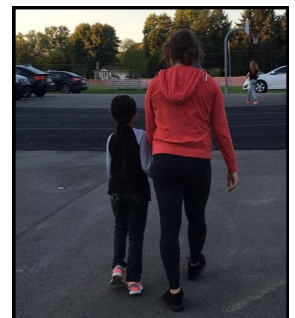
Gabby & Jasmine

#### **2 Years:**

Valerie & India  
 Sarah & Mary  
 Tiffany & Sara

#### **1 Year:**

Mark & Kaden





Big Brothers Big Sisters of Lawrence County

# Big and Little News

BBBS is funded in part by :



(724) 657-3680

bbbslawco@comcast.net

## Clen-Moore & Highland Presbyterian Churches

### Join Together to Expand BBBS Program

Eight years ago, Clen-Moore Church partnered with BBBS in an effort to make a positive impact on the community. Ten children were officially “matched” through this effort. The ‘reach’ went beyond just improving the lives of those children though, the whole church got involved. Over the years, a variety of church members have hosted activities, cooked dinner for the BBBS Bigs and Littles, and have donated their time and resources.

The “Bigs” in the program have developed meaningful relationships with the children they were each mentoring, as well as, the child’s whole family. These matches are some of the longest and strongest in the history of BBBS.

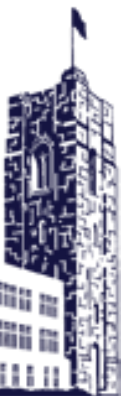
As the children who were matched eight years ago are growing up and becoming adults themselves, BBBS and Clen-Moore began to explore what would become of the effort to mentor youth at this church.

BBBS is excited to watch this opportunity expand, as Clen-Moore and Highland Presbyterian Church have decided to join forces and infuse a new batch of mentors with littles!

Thanks to special folks at both Clen-Moore (Rev. Weichman and Bill Nesbitt) and Highland (Rev. Kinney and Youth Pastor, Aaron Christy) for helping make this partnership and subsequent mentoring matches a reality. BBBS is excited for the future mentoring opportunities for youth in our community through this church relationship!



Thanks to the Westminster basketball team and cheerleaders for hosting BBBS’ ‘waiting list kids’ for a pizza and dance party prior to their win over Penn State Beaver!



**WESTMINSTER COLLEGE**

## The Confluence



coffee.conversation.community.

Open 8AM—6PM

MONDAY—FRIDAY

& until 9 Thursdays for live music

214 E. Washington St.  
New Castle, PA 16101

(724) 698-7604

Free parking available at  
Washington Center Plaza



[www.ConfluenceCoffee.org](http://www.ConfluenceCoffee.org)



Cray is committed to being involved in strategies that will help strengthen our community— ultimately, helping the families and children we serve. The Confluence is a place where people in New Castle can come together and build hope for a better tomorrow!

## Wedding Season is Upon Us

Let The Confluence help you celebrate your big day! We've been host to bridal showers, bachelorette tea parties & paint/sips, and even a wedding ceremony!

Call Dixie (724) 698-7604 to explore the opportunities and to book your event!



## Got Talent?

Share your **musical** gifts on stage



## ACOUSTIC OPEN MIC

# Every Thursday

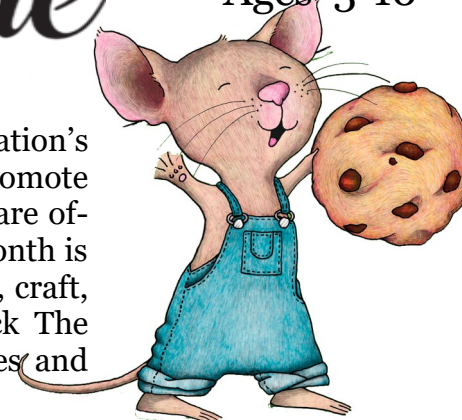
Open Mic 6-7:00 Performers arrive 5:45

(Followed by featured musicians 7-9:30)

## Storytime

Best for  
Ages 3-10

In partnership with the PNC Foundation's Grow Up Great initiative and to promote The Confluence's Kid's Corner, we are offering monthly story time. Each month is a different theme and offers stories, craft, and goodies for the kiddos. Check The Confluence Facebook page for dates and other details.



# Why Cray Gets Involved

“Being in foster care means the world to me. It gave me a second chance on being a part of a family and it’s not just a family. It is a family that loves another, laughs together, and always has your back. I was lucky to be put in the foster family that I am in. My foster mother does not do it for the money, she does it for us...because she loves every single one of us and treats us like her own. This is why I love being in foster care.”

J.K., age 16



“When I was first matched with my little, she would cover her face with her hands, look down, and not respond to any questions. After one year of being matched, we went to a cheerleading exhibition where she was surrounded by all kinds of new people. Not once did she cover her face and she even said ‘Hi’ to a lot of people. On the way home, she said that she wanted to come back next year and do the cheers. What an extremely successful night.”

-Big Sister

---

## Still want to *KNOW MORE?* Or do you want to *GET INVOLVED?*

If you’d like to get involved with one of Cray’s programs or initiatives, whether through your time, talent, or treasury, please get in contact with :

**Melissa Barnes** 724-654-5507

Cray is always seeking volunteers: mentors, tutors, bakers, musicians...

& special items for activities: school supplies, books, board games...



**Cray Youth and Family Services, Inc.**

**332 Highland Ave.**

**New Castle, PA 16101**

**Non-Profit Org**

**U.S. Postage**

**Paid**

**New Castle, PA**

**Permit #5**

**Return Service Requested**

-----  
**BE A SUPERMAN TODAY AND HELP MAKE LIFE BETTER FOR KIDS**

As Cray transforms for the future to meet the growing challenges that face kids and families in Lawrence County, we need your help! Please consider a donation to Cray.



**YES, please accept my contribution of \$ \_\_\_\_\_**

Please designate my contribution to assist:

\_\_\_\_\_ Big Brothers Big Sisters \_\_\_\_\_ Where Most Needed

Name: \_\_\_\_\_

Address: \_\_\_\_\_

City: \_\_\_\_\_ State: \_\_\_\_\_ Zip: \_\_\_\_\_

Please make checks payable to Cray Youth & Family Services

\*All donations, monetary & in-kind, are tax-deductible.

\_\_\_\_\_ Please check here if you do NOT want your donation publicly acknowledged.

Donations can be made online through  
JustGive.org by visiting our website:

**[www.CrayYouth.org/donate](http://www.CrayYouth.org/donate)**

(credit card fees and processing charges are  
deducted from gift online)

What's in your will is a testimony of what is important to you. When thinking about giving, an ultimate gift is one that will last. Please consult your attorney or tax advisor when considering your estate planning.