

# GREENLAND PINES PTA PAW PRINT NEWSLETTER



Principal, Mrs. Bacho-Logsdon

PTA President, Leanne McLane



Greenland Pines Elementary School **Success. Character. Leadership.**

**SPECIAL POINTS OF INTEREST:**

- PTA member surprise students as Dr. Seuss character
- Math & Science Festival
- Email event photos
- Seven classes hit 100% membership
- Need Triathlon Members & Volunteers
- NEED Nominations for PTA Board & Committee Chairs
- Support our Business Partners
- New PTA discounts

**INSIDE THIS ISSUE:**

Board News, Board and Chair Position Descriptions	2
Calendar	3
PTA Mission & Purpose, Advertisements	4-5
Member Discounts, Legislature Info, Triathlon	6-8

**1ST VICE PRESIDENT'S MESSAGE PROGRAMS BY AMY BOYLE**

"Oh, The Places You'll Go"

A book written by one of children's greatest authors of all times, Dr. Seuss. We have gone all kinds of places this past month. We started the month with a week-long celebration of Dr. Seuss's birthday on March 2 and had fun activities each day in the classroom themed around the memorable stories that we all cherish. Everyone's favorite 'Cat in the Hat' showed up and made sure no one was left out of the festivities. Children could be spotted all over campus in the Cat's infamous red and white hats that they got to make and decorate. The Cat even invited a special guest on that Friday. The Grinch showed up in all his grumpy, green glory. He was so happy it was miserable, rainy weather outside he brought from Whoville. He was disappointed the cafeteria wasn't serving roast beast, but it was short notice. He read his favorite

story on the morning announcements and passed out candy to each one of the who's, I mean students, in the lunchroom. Teachers and students had so much fun dressing up as their favorite Dr. Seuss characters that Friday. There were all types of who's, sneeds, cats and things roaming around. It was quite a sight.

The next adventure was to spend a week shopping and enjoying a book fair at school. As always, it was a really a big hit and the students love getting to show some independence by picking out and purchasing their favorite books. The book fair wraps up the end of the week by being open during the Math and Science Festival so parents could join in the fun. We had a great turn out this year. Many thanks for your continued support! The teachers do a great job letting the students

get hands on experience with fun activities that engage them in new and exciting ways.

Onward to more places, we all got to exhale and all take a much needed spring break before our last big stretch of school before summer break. A big congrats to our 3<sup>rd</sup> and 4<sup>th</sup> graders for finishing up their FSA tests, and good luck to our 5<sup>th</sup> graders as they prepare for their tests in the next few weeks.

Places we are off to next, we have some exciting things coming up before school wraps up, so please be on the lookout for more information. April is National Poetry month, a time set aside to celebrate poets and their craft.

So until next month remember, "You're off to Great Places! Today is your day! Your mountain is waiting. So... get on your way!" Dr. Seuss

Amy Boyle  
1<sup>st</sup> Vice President of Programs

**COMMITTEE CHAIR NEWS**

Funding for the school golf cart batteries has been met!

**See the next page for the available volunteer PTA board and chair positions.**

Visit, like, and share these sites with others!

Email photos from school and PTA events to [klimchaks@comcast.net](mailto:klimchaks@comcast.net) from last April til this April. (further away photos and event setting/object photos are fine as well!)

FL PTA membership discounts to LEGOLAND!!!  
(link on page 6)

<http://www.duvalschools.org/greenlandpines>

<http://www.greenlandpinespta.com/>

<https://www.facebook.com/GreenlandPinesPTA>

PTA BOARD NEWS

**PTA Executive Board  
2014-2015**

**President**

Leanne McLane

**1st Vice President  
Programs**

Amy Boyle

**2nd Vice President  
Ways and Means**

Angie Kimsey

**3rd Vice President  
Membership**

Blair Putz

**Treasurer**

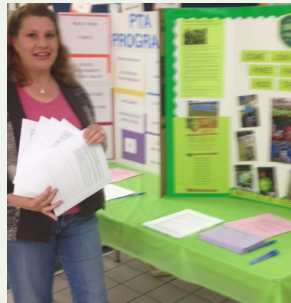
Amy Curts

**Recording Secretary**

Jacqueline Johnson

**Corresponding Secretary**

Leanne McLane



**March Madness PTA table at the Math and Science Festival**

**PTA Memberships**

100% PTA membership classrooms that earned pizza parties! Congratulations!

- K- Leech
- 1- Alford
- 2-Spilling
- 3-Shoonmaker and Nice
- 4- LeStrange and Crosby
- 5- Hopper



Special PTA surprise visitor in celebration of Dr. Seuss' Birthday Celebration

**BOARD POSITION DESCRIPTIONS  
GPE PTA NEEDS YOU!**

We are looking for new faces with exciting new ideas to fill these spots! If you are interested or would like more information please contact Jennifer at (904) 673-4661 or email her at [jenmarcellus2@gmail.com](mailto:jenmarcellus2@gmail.com).

**Executive Board**

**Corresponding Secretary:**

Conduct correspondence of the PTA as requested (thank you letters)

**2015-2016 PTA Nominees :**

**Executive Board**

- President-** Angie Kimsey
- 1st VP Programs** – Jennifer Marcellus
- 2nd VP Ways and Means-** Leanne McLane
- 2nd VP Membership** - Jacqueline Johnson
- Treasurer-** Amy Boyle
- Recording Secretary-** Amy Curts

**Board Members**

- Communications-** Sharon Klimchak
- Box Tops** – Maria Kaltsas
- Labels for Education** - Tenisha Guevara

The last **General Board Meeting on May 5<sup>th</sup> 2015 @ 4:30 to elect our new Officers for the 2015-2016 School year.**

**PTA Committee Chairs**

**Box Tops/Labels for Education**

Lisa Ashmore

**Volunteer Coordinator**

Jenifer Marcellus  
[Gpepta.volunteer@gmail.com](mailto:Gpepta.volunteer@gmail.com)

**Awards**

Sarah Driscoll

**Hospitality**

Amanda Conner

**Cultural Arts**

Amanda Conner

**Vision/Hearing**

Leanne MLane

**Business Partners**

Alison Stockli

**Communications**

Sharon Klimchak

**COMMITTEE CHAIR DESCRIPTIONS  
GPE PTA NEEDS YOU!**

**T-shirts-** PTA facilitates the design, color selection, vendor, ordering and distribution of school t-shirts for every class.

**Volunteer Coordinator-** PTA is run by volunteers and is often asked to request volunteers for school functions. This chair is responsible for finding these volunteers thru various sources- teacher supplied information, PTA sign-up sheets, emails obtained from membership forms and data from the start of the year. This chair is responsible for the Volunteer Fair and getting Teacher Favorites distributed to room parents prior to Holidays and Teacher

Appreciation Week.

**Awards-** Completes all award applications with the help of each Board member who facilitates any eligible event or responsibility.

**Vision Screening-** Responsible for getting volunteers to do the Vision screening and paperwork. A Vision Coordinator will come to the school and do a workshop and teach this chair how to run their own clinic. Responsible for scheduling teachers for their screening times.

**Hearing Screening-** Work with the Speech teachers to set up Hearing screening. May need to go to additional training on machines.

**Hospitality-** This is the party planner. Responsible (works with Business partner) for planning and organizing each event including getting food, gift cards donated.

Responsible for decorating all school events

**Historian-** Catalogs events all year long.

**Business Partner-** Responsible for locating business partners within our community or Jacksonville as a whole who will donate their time, money or business incentives (coupons, gift cards, free items) that the PTA uses as gifts or incentives for membership drives, teacher gifts and etc.

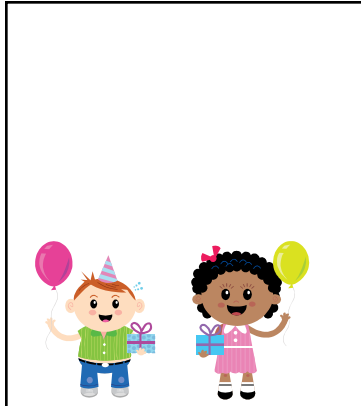
GREENLAND PINES ELEMENTARY PTA

# APRIL 2015

SUN	MON	TUE	WED	THU	FRI	SAT
			1	2 Teacher Planning Day	3 No School	4
5	6	7 Picture Day 4:30 PTA mtg. 6/30 SAC mtg.	8 Early Dismissal	9 PTA Fundraiser: Chic-fil-A Spirit Night	10	11
12	13 5th Grade Science FCAT	14 5th Grade Science FCAT Report Cards	15	16	17	18
19	20	21 5th Grade Reading FSA	22 5th Grade Reading FSA	23 5th Grade Reading FSA	24 5th Grade Reading FSA	25
26	27 5th Grade Math FSA	28 5th Grade Math FSA	29 5th Grade Math FSA Early Dismissal	30 5th Grade Math FSA	1	

SPECIAL DATES

Add Personal Dates and Notes for your child's class, family, friends, activities HERE:)



Save the DATE:

May 5th- PTA Mtg.  
SAC Mtg.  
May- Boosterthon

## Greenland Pines Elementary PTA

### Duval County PTA

President  
Margaret Godke

1st VP (Programs)  
Karen Nuland

2nd VP (Local Unit Mentors)  
Victor Melone

3rd VP (Leadership Development)  
Juliann Gaus-Graeser

#### PTA Links

Duval County PTA  
<http://dccpta.org/>

#### Florida PTA

<http://www.floridapta.org/>

#### National PTA

<http://www.pta.org/>  
Cantonment, FL 32533  
850-937-0440  
[dodypody@aol.com](mailto:dodypody@aol.com)

#### PTA Vision, Mission and Purpose

The overall purpose of PTA is to make every child's potential a reality by engaging and empowering families and communities to advocate for all children.

#### PTA MISSION

To Be A Powerful Voice For ALL CHILDREN,

To Be A Relevant Resource For Families and Communities,

To Be A Strong Advocate For The Education and Well-Being Of Every Child

#### PTA PURPOSES

To Promote The Welfare Of Children and Youth In The Home, School, Community, and Place of Worship

To Raise The Standard Of Home-Life

To Secure Laws For The Care and Protection Of Children and Youth

To Bring Into Closer Relation The Home and The School, That Parents and Teachers May Cooperate Intelligently In The Education Of Children and Youth

To Develop, Between Educators and The General Public, Such United Efforts As Will Secure For All Children and Youth The Highest Advantages In Physical, Mental, Social and Spiritual Education.

## GREENLAND PINES ELEMENTARY PTA GOLD BUSINESS PARTNERS



**EAGLE POOLS**

[Eaglepools.com](http://Eaglepools.com) 904-737-3434



10111-12 San Jose Blvd.  
904-880-5161

[www.tropicalsmoothie.com](http://www.tropicalsmoothie.com)



K TIGER MARTIAL ARTS  
**TAEKWONDO**

[www.ktigertkd.com](http://www.ktigertkd.com)  
11629 San Jose Blvd.  
904-647-9036



**Champions Gymnastics Club**

[Championsofjax.com](http://Championsofjax.com)  
9410 Historic Kings Rd. S  
904-732-6040


**Want to advertise  
in the Greenland Pines PTA  
newsletter?**

Please contact:  
Alison Stockli  
[gpeptabusinesspartners@gmail.com](mailto:gpeptabusinesspartners@gmail.com)



**Scentsy**  
INDEPENDENT CONSULTANT

<https://amycurts.scentsy.us>  
Amy Curts 904-298-4192



**tcby** the country's best yogurt

13820 Old St. Augustine Rd. Suite 405  
[store.tcby.com/homeshoppesatbartrampark](http://store.tcby.com/homeshoppesatbartrampark)  
904-260-9833

**SILVER PARTNERS**

Azure Pool Services  
[azurepoolservices@yahoo.com](mailto:azurepoolservices@yahoo.com)  
(904) 993-6568

**Marcellus Alliance Team**

[marcellusallianceteam.com](http://marcellusallianceteam.com)  
[marcell@comcast.net](mailto:marcell@comcast.net)

904-673-4660



**Southside Blvd  
at the Avenues**

Text CFASOUTHSIDE to 411247  
for event updates and insider info.

Southside Boulevard at the Avenues  
Franchised Restaurant Operator  
Joel Parker

9980 Southside Blvd  
Jacksonville, FL 32256  
Phone: (904) 519-0505  
Fax: (904) 519-0506  
[www.cfarestaurant.com/southside/home](http://www.cfarestaurant.com/southside/home)

Store Hours  
Mon-Sat, 6 AM - 10 PM



The Premiere Tutoring Company in Jacksonville, FL

Jacksonville/Mandarin/Fruit Cove/Clay  
(904) 268-8556  
10131 San Jose Blvd  
Jacksonville, FL 32257  
Director: Dana Edmonds, B.A. Ed.

Hours: Monday-Thursday 2:30-8:00 pm

[www.tutoringclub.com/index.php/jacksonvillefl](http://www.tutoringclub.com/index.php/jacksonvillefl)



JACKSONVILLE: Bartram Park  
13702 Old St. Augustine Road  
Jacksonville, FL 32258  
[www.eatpdq.com/index.php?id=5&locationid=23](http://www.eatpdq.com/index.php?id=5&locationid=23)

For Catering and other inquiries  
Phone: 904-758-3326

HOURS:  
10:30am - 10pm  
7 DAYS A WEEK

OPERATING DIRECTOR:  
Josh Baker





The Duval County Council of PTAs is proud to present your 2014-2015



**PTA / PTSA Member Benefits:**

**SAN MARCO Books and More**

Receive a 10% discount when you show your PTA card. Located at 1971 San Marco Blvd. 396-7597



"2 for 1 Tickets" for PTA Members only. Call 904.646.4277 to reserve. Proof of Membership required for each "PTA 2 for 1".



2 for 1 admission on all Public Sessions for PTA Card Holders. [www.jaxiceandsportsplex.com](http://www.jaxiceandsportsplex.com)



Space Walk of Jacksonville is offering all Duval County PTA members a 20% discount off the rental rate of any inflatable for a home party. No blackout dates, no minimum and no deposit. 904-646-5867 [www.spacewalkofjacksonville.com](http://www.spacewalkofjacksonville.com)



Show your membership card at checkout to receive 10% off your order (2 locations: San Marco & Baymeadows at San Jose) [www.pizzapalacejax.com](http://www.pizzapalacejax.com)



Receive 10% Off of Labor (up to \$50 maximum) of any repair at RPM Automotive if you show your PTA Membership card.



During the month of April, Receive FREE bowling shoes (up to 6 pairs) with the purchase of a bowling lane OR a \$5 game card for every paid adult entree at Latitude 30 when you show your PTA membership card.



Office Depot presents "Bring Your Own Device bundle packages" at special prices for PTA Members. -PTA members can also get discount cards for special pricing at the copy center and discounts on tons of ODS products. - ask your PTA for details!



Receive a 10% discount off any order when you show your PTA Membership card. (Dine in or pick-up only please) 1538 Hendricks Ave. San Marco 32207



Signarama Jacksonville Southside is offering a 15% discount on all: printing, t-shirts, banners, flags, etc. for all duval county PTA members.



Tree Hill Nature Center 10% Off Memberships w/ PTA card. [www.treeshill.org](http://www.treeshill.org)

**SCHOOL AIDS**

When you shop at School Aids- mention your school at check-out. For every \$100 logged toward your school- School Aids will donate a \$15 gift card to your school's PTA!

Thank you to the Jacksonville Jaguars and the Jacksonville Zoo for offering special Member incentives earlier in the school year.



If your business would like to offer a "Member Benefit" contact our DCC Business Partners Coord. at 716-9105 Visit DCC PTSA website: [www.DCCPTA.org](http://www.DCCPTA.org) for more information and monthly updates.



Save 15% at these Sweet Frog Premium Frozen Yogurt locations: Deerwood, Town Center, Lakewood, Jax Beach, San Jose Blvd. (at 295), Flverside, & Atlantic Intracoastal (Queens Harbour Shopping Center.)



Enjoy a 10% Discount at ALL Tropical Smoothie Cafe' locations (Jacksonville / Duval) when you show your membership card. at checkout. [www.tropicalsmoothie.com](http://www.tropicalsmoothie.com)



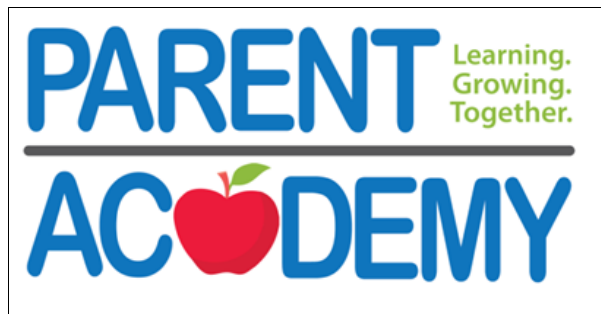
PTA members can enjoy Discount tickets to PTA Night with the Jacksonville Suns and special food prices when you show your PTA Membership card (in May or June, TBA).

Parent Academy Spring Catalog is HERE for Duval County

[www.duvalschools.org/ParentAcademy](http://www.duvalschools.org/ParentAcademy)

E-mail: [ParentAcademy@duvalschools.org](mailto:ParentAcademy@duvalschools.org)

or call 904.390.2960 for more registration options.



For important up to date Legislature Issues, please visit information from our Duval County PTA website:

<http://iadvocateforkids.org/PTA/>

DISCOUNTED LEGOLAND tickets for PTA members, visit:

<http://floridapta.org>



FIRSTCOASTKIDSTRIATHLON.ORG

Saturday & Sunday  
May 2 & 3, 2015  
Everbank Field



FIRST COAST KIDS TRIATHLON  
2217 BLANDING BOULEVARD, SUITE 101  
JACKSONVILLE, FLORIDA 32218

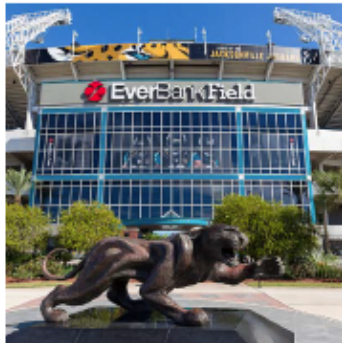


presented by



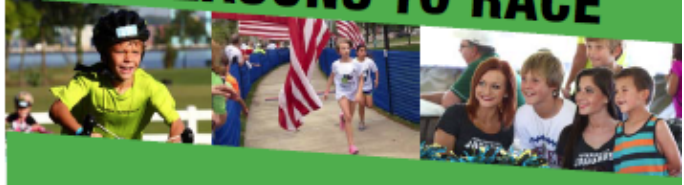
POWERED BY FIREHOUSE

Saturday & Sunday  
May 2 & 3, 2015  
Everbank Field



FIRSTCOASTKIDSTRIATHLON.ORG

# 6 REASONS TO RACE



1

## CELEBRITY BIG KIDS™

We are putting together an all-star line-up of police officers, Olympic Champions, and professionals who lead healthy, active lives to race alongside you and cheer you on. Meet them at the pep rally before the race!

2

## SAFE COURSE

Nothing is more important than the safety of every participant. This will be a closed course, and water stations, race volunteers, and safety personnel will be positioned throughout the race.

3

## PRE-RACE PEP RALLY

Scope out the course, complete final paperwork, pick up your packet, and get excited for the race! Look for details at [FIRSTCOASTKIDSTRIATHLON.ORG](http://FIRSTCOASTKIDSTRIATHLON.ORG)

4

## GROUP FUNDRAISER

We want this event to give back to the community and this can start with your organization. Register your team, youth group, or school as a First Coast Kids Triathlon Team, then have every member of your group indicate on their registration form that they are part of your team. Bring 10 or more kids to the race and receive \$10 for every participant. There is no limit to the fun you can have -- or the money you can raise -- until the event sells out.

5

## FREE ICE CREAM

Need we say more? Enjoy at the end of the race!

6

## COOL FINISHER MEDALS

All participants will receive cool finisher medals. We will also have special trophies for the top three finishers in each age group, so make sure to stay for the awards ceremony!

