

QUARTERLY NEWSLETTER



UCLA
Department of Pathology
and Laboratory Medicine



INSIDE THIS ISSUE:

New ACMG President	2
Clinical Alumni	3
Dr. Drake & Apple	4
Medical Lab Week	5
CytoTechs & Awards	6
Applause	7
Congrats Grads	8
Kudos & CLMA	9
CMPG	10
New Faces	11
ASCLS	13



Dr. Wayne Grody: New President of ACMG



American College of Medical Genetics
Medical Genetics: Translating Genes Into Health®

On March 18, 2011, our own Wayne W. Grody, MD, PhD, Professor of Pathology & Laboratory Medicine, Pediatrics, and Human Genetics, became the new president of the American College of Medical Genetics (ACMG), the national professional organization for medical genetics professionals.

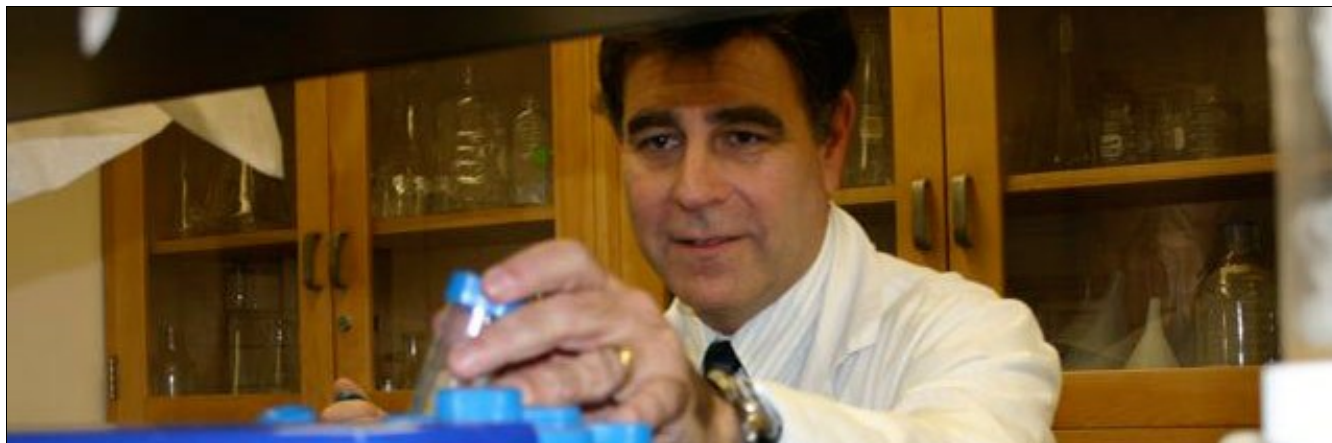
"I have many different mixed emotions about taking over as president," Grody said. "It's made me tremendously proud, also humbled, also nervous. I think the ACMG is so important. It may be the most important

He has been one of the primary developers of quality assurance and ethical guidelines for DNA-based genetic testing for a number of governmental and professional agencies including the FDA, AMA, CAP, ACMG, ASHG, AMP, CDC, and the NIH-DOE Human Genome Project (ELSI program).

He served as a member of the NIH-DOE Task Force on Genetic Testing, and was Working Group chair for development of ACMG's national guidelines for cystic fibrosis and factor V-Leiden mutation screening. Most recently, he was appointed chair of an Advisory Committee on Genomic Medicine

lar Genetics, and Biochemical Genetics) and the American Board of Pathology (Anatomic and Clinical Pathology, Molecular Genetic Pathology).

"As advances in medical genetics are being made through research and discovery, the ACMG and its members are working diligently to overcome the challenging regulatory and ethical issues raised by medical genetics, in particular molecular pathology," said Michael S. Watson, PhD, FACMG, executive director of the ACMG. "Dr. Grody is a highly capable leader and the right person to guide the ACMG through this very critical



of all the Colleges in organized medicine at this moment in history. To be the one at the helm during these critical years is daunting and exciting."

Dr. Grody is also the director of the Diagnostic Molecular Pathology Laboratory within the UCLA Medical Center, one of the first such facilities in the country to offer DNA-based tests for diagnosis of a wide variety of genetic, infectious, and neoplastic diseases, as well as bone marrow engraftment, patient specimen identification and paternity testing by DNA finger-printing.

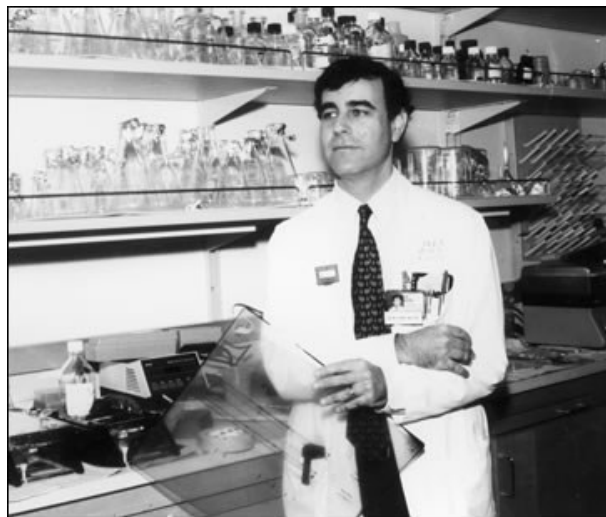
He is also an attending physician in the Department of Pediatrics, specializing in the care of patients with or at risk for genetic disorders. In addition, he is heavily involved in basic molecular genetics research involving regulation of gene expression of arginase and related enzymes in hereditary arginase deficiency and various cancers, population molecular genetic screening, and construction of artificial human mutation samples.

for the entire VA healthcare system.

As a sidelight, Dr. Grody has been active in the film and television industries for many years, first as film critic for MD Magazine, a national leisure journal for physicians, then as technical advisor and sometime writer for a number of feature films, TV movies, and television series including Life Goes On, Chicago Hope, CSI, Medium, Heroes, and both Nutty Professor movies.

He did his undergraduate work at Johns Hopkins University, received his M.D. and Ph.D. at Baylor College of Medicine, and completed residency and fellowship training at UCLA. He is double board-certified by the American Board of Medical Genetics (Clinical Genetics, Molecu-

and exciting time in medical genetics."





by Valerie McWhorter, M.D.
Chair, Pathology Clinical Alumni Committee

Clinical Alumni Committee

The *UCLA Pathology Clinical Alumni Committee* was established earlier this year to represent the alumni of the pathology residency program. The committee has already established many goals. The first is to provide educational opportunities to current residents and fellows through ongoing lectures and workshops, focused on topics such as professional development, interviewing, understanding contracts, and practice management.

The committee would also like to provide on-site mentoring opportunities, whereby residents and fellows have frequent access to alumni, and the option to spend time at their clinical practices. The committee is working to start initial activities during the year ahead, to begin providing residents and fellows with much needed insight into professional life training.

Another goal of the committee is the development and launch of an alumni database. This database will store up-to-date contact information for all alumni and residents and make possible valuable networking and social opportunities. The committee is still consider-

ing how the database will be made accessible, but any plan will involve secure, password-protected access to any contact information. A letter will soon go out to alumni asking for updated contact information, including e-mail.

Lastly, fundraising is a goal of the committee. We have established the *Pathology Clinical Alumni Fund* that will be used to support worthy causes in the realm of pathology residency. This fund will support such causes as travel to conferences, purchase of textbooks and other educational resources, publication and/or presentation of research, and production of the professional development options mentioned above. This is a very exciting opportunity to further educate and prepare residents and fellows for their future professions. The letter to alumni will also include a request for donations to this fund. We already have several generous donations!

The Pathology Clinical Alumni Committee is delighted to represent the alumni and provide an interface between the department and alumni, and to relink connections between each other. We look forward to many worthy projects in the future.

Clinical Alumni Day – June 8, 2011

The *Pathology Clinical Alumni Committee* hosted an Alumni Day on June 8th, to coincide with graduation festivities for residents and fellows in the department. This event began with a lunch for current residents and alumni, which was well-attended and allowed for collegial exchange between alumni and residents. Many residents had questions about life after training and the challenges and rewards of community work. Alumni provided a different perspective, since residents usually only interact with academic pathologists during their training. I received positive feedback from many of the alumni, who really enjoyed the interaction as well. After lunch, there was a tour of the department where alumni saw the many recent renovations and had the chance to reunite with old mentors, colleagues and friends. In fact, the tour kept getting derailed because of these frequent impromptu visits!



In the evening, the alumni joined the rest of the department at cocktail hour and then dinner in honor of the graduating residents and fellows. Dr. Myla Lai-Goldman (Class of '89) received the 2011 Alumni Award, and gave a talk about several of her adventures "off the beaten path" in non-traditional professional venues, drawn from her formative scientific and corporate roles in molecular pathology. Mr. Steve Tablak (Founder, Tamtron Corporation) received the 2011 Corporate Award, and spoke of his experiences introducing the new era of electronic pathology through Tamtron and PowerPath. The evening ended with alternately colorful and sentimental presentations of graduation certificates and awards to mentors and trainees.



L to R: Rachel Finck, Marie Sohsman, Beth Palla, Serge Alexanian, Sue Chang, Julie Huss, Mazdak Khalighi, Eric Swanson



L to R: Kristin Olson, Yvonne Noronha, Charles Lassman, Khin Moe Aye, Vicki Apichairuk, Dana Altenburger, David Lu

Thomas Drake, M.D., was recently highlighted in an article published in *UCLA Medicine Magazine*. This publication features stories, news, research and highlights from the David Geffen School of Medicine at UCLA and UCLA Health System. Congratulations, Dr. Drake, on your recognition and continued success in research.

GENDER MATTERS

Excerpted from UCLA Medicine Magazine, Summer 2011, Written by Monica Gable

Not that long ago, women were regarded in medicine as merely little men. Obviously, their reproductive equipment was different, but as far as the rest of biology went, their bodies were assumed to behave the same. After all, didn't they share the same genetic code?

Then in 2006, a group of UCLA researchers were looking at mice – specifically at the liver, brain, muscle and adipose tissue of mice – when they noticed something extraordinary. There were striking differences in the way genes were expressed in males and females. If this finding was true in mice, it almost certainly was the case in humans. Gender, in fact, did matter. Maybe this discovery could help explain something that baffled physicians: why women and men sometimes respond differently to the same diseases and drugs.

This was heady stuff. So when the study was published in the August 2006 issue of *Genome Research*, the attention it attracted was immense. "The sex-aspect differences between men and women are perennially of interest to people," says Thomas Drake, M.D., professor of pathology. "That's the one paper I've been involved with when we've had news people call; even TV people come over and videotape us."

Dr. Drake, working with colleagues Jake Lusic, Ph.D., professor of human genetics, and Xia Yang, Ph.D., then a postdoctoral fellow in cardiology, discovered that even in the same organ, thousands of genes varied according to sex. While the smallest gender gap turned up in the brain, the largest appeared in the liver. This finding wasn't just academic. With those differences, researchers might be able to understand a variety of common disorders, from obesity to diabetes.

"There are biological differences that almost certainly affect diagnosis and treatment," says Dr. Drake. "If you find a genetic mutation in a man and the same genetic mutation in a woman, in one of them you could have a very significant risk and in the other no risk. In general, it's probably not going to be all or nothing, but a modifier."

In heart disease, it has long been known that aspirin is more effective in preventing heart attack in men than in women. Yet the drug has been routinely prescribed for women as well. Through innovative mouse strategies, the research of Dr.

Drake and his colleagues is accelerating the identification of areas for developing and testing drugs tailored to benefit gender-specific features of human disease.

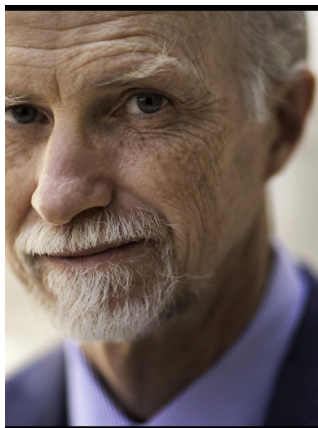
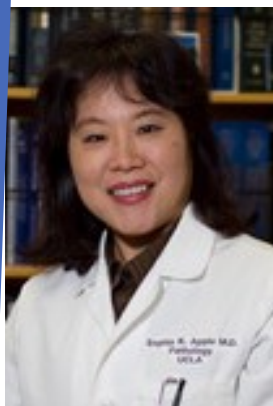


Photo by Mark Berndt



Why Yet Another Book On Breast Diseases?

by Sophia K. Apple, M.D.,
Associate Professor and
Chief of Breast Pathology

Most textbooks in pathology are written by pathologists with microscopic pictures and descriptions along with natural biology about the diseases. This approach is good but perhaps fails to see the complete picture of how a disease was detected.

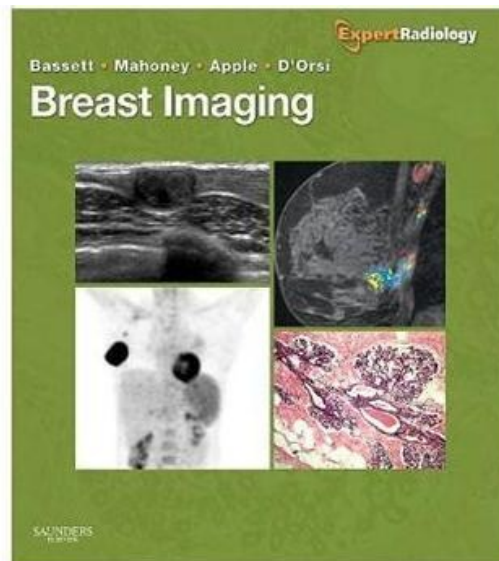
Uniquely for the breast, radiologists are the gate-keepers who see a good portion of the complete picture, albeit in black and white shadows. What they see is critical for a pathologist to understand and correctly identify the disease which will provide a "Radiology-Pathology" correlation.

This textbook contains essential radiological findings in most of the breast lesions as part of the Elsevier, Expert Consult series, providing the physician an extremely unique and valuable approach to diagnose breast cancers. The textbook is divided into 10 sections with radiology-pathology correlation being the majority of the contents, with 13 chapters dedicated to pathology sections with color figures.

Also of interest for the young resident and the newer generation of physicians is availability of a search engine to access textbook information on-line at a computer near the work-station using a spe-

cific disease entity.

While writing this book over a period of two years, I was thankful to all the patients who gave me the valuable opportunity to review their breast tissue and unique diseases they brought to my attention. Although I practice medicine "behind the scenes" for most patients, it is truly a privilege to serve them. Lastly, I am so fortunate to be a part of the David Geffen UCLA Pathology Department which provided me a faculty position so that I can work with such a distinguished radiologist as Dr. Lawrence Bassett—he is so enjoyable to work with!





Medical Lab Professionals Week

by Nathan Okawa
Core Laboratory Senior Supervisor

National Medical Laboratory Professionals Week (NMLPW) is an annual celebration of the medical laboratory professionals and pathologists who play a vital role in every aspect of

health care.

NMLPW originated in 1975 as National Medical Laboratory Week, under the auspices of the American Society for Medical Technology, now called the American Society for Clinical Laboratory Science (ASCLS), and is held the last full week in April. In subsequent years, other organizations have served as cosponsors and campaign supporters, such as CAP, ASCP and CLMA. Beginning in 2010 the organizers decided to "brand" the event by using the same theme each year: Laboratory Professionals Get Results.

The UCLA Core, O.R., POCT, ED and Toxicology Laboratories are staffed by over 100 dedicated laboratory professionals who provide acute care 24/7 to the Medical Center, guiding more than 70 percent of all decisions about diagnosis, treatment, hospital admission and discharge.

National Medical Laboratory Professionals Week



Laboratory Professionals
Get Results

April 24-30, 2011

To celebrate NMLPW this year, the Core Lab held two potlucks, one to begin the week and another to end the week, a "Guess the number of caps in a jar,"

with prizes to the top three closest guesses, a surprise addition to everyone's BruinCard account, and as a display of our creative talent, a lab coat decorating contest and costume show, with a winner from each shift. Our theme for this year:

"It's groovy to work in the lab!" In addition, many thanks go to Human Resources for the UCLA lunch bags.

In keeping with the University's tradition of instilling a service

ethic among its students, faculty and staff, the Core Labs, Transfusion Medicine, Brentwood Microbiology and Cytogenetics, and Anatomic Pathology held a food drive this year during Lab Week, benefitting the UCLA Student Food Closet. (See Sidebar) Besides many boxes of food, over \$300 was donated by the Core Lab alone. Good job!



L to R: Chris Koster, Cristina Hilado-Suarez, Milda Simonyte, Christian Soliman, Millie Zurbano, Tessie Guzman, Lavita Boyd, Cora Gonzales, Flora Ching



Emmy Von Seyfried



Transfusion Medicine and Core Lab Food Drive (L to R): Courtney Hamilton, Jonathan Romasanta, Larry Comee, Kristina Georgieva, Debra Cobb, Rafael Acampado, Diana Cray, C.K. Or, Lucy Garrido, Mary Anne Anthony

Lilian Baldwin's lab coat artwork



SIDEBAR:

Campus officials began hearing anecdotal evidence in 2008 of the economic downturn's effect on students, said Antonio Sandoval, director of UCLA's Community Programs Office. No one knows the exact number of homeless or hungry students on campus, he said. Some are undocumented, some are veterans. Many have parents who have become destitute either through divorce or lost jobs. Located in the Student Activities Center, the Food Closet operates on the honor system, and stocks a variety of non-perishable food items and dry goods. For more information: <http://magazine.ucla.edu/exclusives/hope-fills-ucla-food-closet/> or contact: CPO Food Closet Bruin Resource Center B44 Student Activities Center (310) 206-0504



Rich Pucci at The Food Closet with a UCLA student

Component Lab Food Drive: Irene Stalcup, David Anthony, Aida Rae Manansala

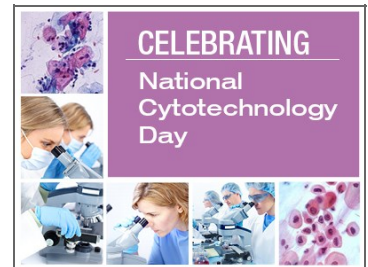


National Cytotechnology Day



Seated (first row, L-R): Po Chu Fung, Rekha Govind, Gwendolyn Hawkins
 Standing (second row, L-R): Mary Levin, Amanda Zopfi Conklin, Nicole Corzine, Dinh Nguyen, Joanne Chui, Michael Cutidioc, Naghmeh Salami, Carolynn Maravilla, Shyue-Lee Yean, Yusheng Jin
 Absent from photo: Marcella Bentley, Judith Brown, Charina Lampa, Diane Mandell, Sean O'Byrne, Nicholas Oseguera, Royal Ragland, Chasity Taylor, Yong Ying, Qiming Zhang

On Friday, May 13, 2011, our laboratory staff celebrated the annual "National Cytotechnology Day" with a pizza party in the School of Cytotechnology.



Cytotechnology Professionals include Cytotechnologists, Hospital Lab Technicians, and Administrative Assistants who provide essential services in the Cytopathology Division of Anatomic Pathology. Gynecological preparations (pap smears), Non-gynecological preparations (fluids) and Fine Needle Aspirates (FNA's) are the commonly processed specimens in this area.

The Cytotechnologists perform the initial evaluation of all Cytology preparations and final sign-out for negative pap smears. Our Cytopathology professionals are highly valued, and we appreciate their hard work, skills, commitment, professionalism, and dedication!

Employee Service Awards

Several Anatomic Pathology employees were honored on May 10, 2011 during National Hospital Week:



(L-R): Richard Pucci, Jean Reiss, Mary Levin, Virgilio Maglonzo, Willie Bell, Gwendolyn Hawkins, Catherine Clarito, Syndette Fabello

- ◆ **Willie Bell:** Neuropathology and Histology-40 years
- ◆ **Gwendolyn Hawkins:** Cytology-30 years
- ◆ **Jean Reiss:** Biomarker Innovations Lab and Orphan Disease Testing Center-20 years
- ◆ **Virgilio Maglonzo:** Flow Cytometry-20 years
- ◆ **Catherine Clarito:** Surgical Pathology Reporting Office-20 years
- ◆ **Laura Elmaker:** Transcription-10 years
- ◆ **Carlos Rullamas:** Immunohistochemistry-10 years
- ◆ **Deomarie Sy:** Histology-10 years

APPLAUSE: Heard Around the Department Anatomic Pathology Employees of the Month

April



Willie Bell
Hospital Lab Assistant II
Neuropathology & Histology

May



Christopher Curtin
Histotechnologist II
Histology

June



Lorena Argueta
Administrative Assistant II
Surgical Pathology
Reporting Office

Anatomic Pathology New Employees

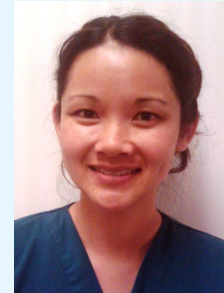
Bryan Radosavcev, PA (ASCP)
Clinical Specialist Supervisor
Surgical Pathology



Carmen Tosity
Pathologists' Assistant
Student



Sheila Tze
Histotechnologist I
Histology



Ignacio Vahl-Ferguson
Hospital Lab Technician II
Surgical Pathology



Zhongyi Zhang
Pathologists' Assistant
Surgical Pathology



CONGRATS: Clinical Laboratory Scientists

by Khanh Andrews, MS, MLS(ASCP)^{CM}
 Clinical Laboratory Educational Coordinator

On July 13, 2011, the Department of Pathology and Laboratory Medicine recognized the graduating Clinical Laboratory Scientist Class of 2011 with a celebration that included family, friends and colleagues. The CLS Class of 2011 included: Ana Rachelle Lontok, Brian Hoxeng, Monique Abril, Maryam Hosseini, Abderrahmane Alioua, and Sharlene Roque.

For the past 52 weeks these students have been rotating throughout our department shadowing numerous trainers. Special recognition was given to Ana Rachelle Lontok as a recipient of the Siemens Healthcare Diagnostics Student Scholarship. Scholarship awards of \$1,000 are available from Siemens for 50 CLS students in their final clinical year of a NAACLS-accredited Clinical Laboratory Scientist (CLS) program.



All of our graduates are looking forward to their future careers as Medical Laboratory Scientists. We wish them luck in any and all of their future endeavors.

Brian, who graduated summa cum laude from CSUDH, will begin working in Molecular pathology beginning the end of July, and AnaRachelle, Sharlene, and Maryam will begin working in the RRMC Core lab beginning early August.

We also welcome our new set of students into the department who will begin the second week of July. Our new students include: Carlos Azucena, Brian Bowland-Hicks, Andrew "Tate" Ward, Amy Do, Amber Moore, and Carlos Garibay.



KUDOS: Dr. Dinesh Rao

Congratulations to Dinesh S. Rao, M.D., Ph.D., who was named a 2011 Kimmel Scholar by the Sidney Kimmel Foundation for cancer research. The Kimmel Scholar Awards were created to advance the careers of gifted, young scientists involved in

cancer research. Those selected are chosen for demonstrating the greatest promise and innovation in their work, and must be in the early stages of their research career. The press release can be seen at <http://www.kimmel.org/Press34.html>.



Annual Conference and Exhibition:



by Nathan Okawa
Core Laboratory Senior Supervisor

The Clinical Laboratory Management Association held their annual meeting, "Thinklab '11", at the Baltimore Convention Center this past May. Highlights of this event were informative sessions, such as "Using Proficiency Testing to Improve Laboratory Quality," and "Reduce Errors, Improve Productivity and Increase Customer Satisfaction," an industry expo showcasing more than 120 exhibitors, visiting Johns Hopkins, and of

course, sampling as many different Maryland crab cakes as I could find!

I also had the good fortune of speaking with our own Dr. Liz Wagar at the College of American Pathologists booth, who sends us her best.

Founded in 1976, CLMA is an international association

of nearly 3,000 clinical laboratory professionals. CLMA provides leadership in the clinical laboratory industry supporting laboratory professionals at any stage of their career. For more information, visit their website at www.clma.org or contact nokawa@mednet.ucla.edu



Johns Hopkins Hospital



CLMA members from UCLA, Children's Hospital LA and St. John's Health Center



Dr. Elizabeth Wagar

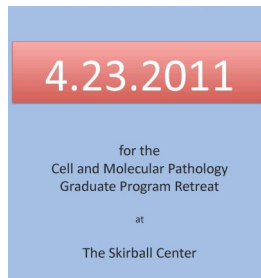


by Nicole Walsh, B.S.,
4th-year
Graduate Student
Researcher

Cellular and Molecular Pathology

Graduate Program Retreat

On April 23rd, the Cellular and Molecular Pathology Graduate Program gathered for their 2nd annual departmental retreat at the Skirball Cultural Center. The day started with a keynote address by Dr. Lenny Rome, Associate Director of CNSI and professor in Biological Chemistry, and included both student and post-doc talks and a poster session.



The departmental retreat provides an opportunity for students, post-docs, and faculty throughout the department to meet and discuss the exciting research being conducted in our diverse department. The day also included a panel discussion with faculty and past post-docs focusing on choosing a postdoctoral fellowship and how to succeed in a post-doc position.



by Mary Clark, B.S.,
4th-year
Graduate Student
Researcher

Cellular and Molecular Pathology Graduate Students



Top row (L to R): Lisa Kohn, Caroline Sham*, Julia Goodnough*, Jennifer Chou, Airie Kim
Middle row (L to R): Nicole Valenzuela, Nicole Walsh, Jeffrey Dock, William Kim, Jeanette Grant
Bottom row (L to R): Mary Clark, Mary Atz, Lesley Earl*, Jenny Hernandez
(*Graduated)

Top row (L to R): Xin Rong, Jin Zhang, Olivia Schontzler, Lisa Kohn, Nicole Valenzuela
Bottom row (L to R): Jeanette Grant, Eileen Heinrich+, Gloria Preza*, Mary Clark, Nicole Walsh
(*Graduated)





NEW FACES: Residents & Fellows

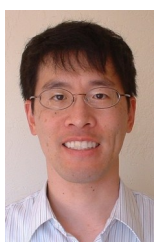
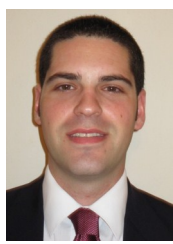
by Annetta Pierro, *Residency & Fellowship Program Coordinator*

We invite the Department of Pathology to join us in welcoming the Housestaff of 2011-2012. This year we have a team of 23 residents and 22 fellows. We look forward to on-going collaboration with our continuing residents and fellows, and we look forward to working with all of our new Housestaff members.

For this academic year, we have four new chief residents (L to R):
Serge Alexanian, Dorina Gui, Susan Kerkoutian, and Beth Palla



In addition, we are joined by seven new residents (L to R): **Shelley Chang** from Case Western Reserve, **Gregory Fishbein** from UCLA, **Michael Kallen** from Vanderbilt University, **Thomas Lee** from UCSD, **Shino Magaki** from Loma Linda University, **Jeffrey Petersen** from UCLA, and **Maria Vergara-Lluri** from UCSF



The new fellows for this year are (see photos on next page):

- **Kantang Satayasoontorn** is joining Bone & Soft Tissue from the Institute of Corporate Professionals in Thailand
- **Irma Oliva** from Emory University is joining Cytopathology
- **Anagh Vora** from Washington University is joining Cytopathology
- **Jordan Carqueville** from Cook County Hospital is joining Dermatopathology
- **John Grimwood** from the U.S. Navy is joining Dermatopathology
- **Emma Taylor** from UCLA Dermatology is joining Dermatopathology
- **Matthew Fleming** from UCLA Pathology Residency is joining GI/Liver
- **Sergei Tatischev** from Beth Israel Deaconess Medical Center is joining GI/Liver
- **Brit Shackley** from UCLA Pathology Residency is joining Hematopathology
- **Phillip Starshak** from UC Davis is joining Hematopathology
- **Hana Vakil** from UCLA Hematopathology is joining Molecular Genetics
- **Kritsanapol Boon-Unge** from University of Minnesota is joining Neuropathology
- **Tracie Pham** is continuing her 2nd year in Neuropathology
- **Anna Nguyen** from UCLA is our post junior fellow
- **Harsha Desai-Basho** from Wayne State University is joining Surgical Pathology
- **Jason Holly** from University of Missouri is joining Surgical Pathology
- **Anna Lairy** from Brigham & Women's Hospital is joining Surgical Pathology
- **Adelina Luong-Player** from UC Irvine is joining Surgical Pathology
- **Sasa Pavlovic** from University of Illinois is joining Surgical Pathology
- **Sreelakshmi Ravula** from University of South Alabama is joining Surgical Pathology
- **Elizabeth Taub** from Kaiser Permanente is joining OVMC as the Surgical Pathology Fellow
- **Rachel Finck** from UCLA Pathology Residency is joining Transfusion Medicine



UCLA Department of Pathology and Laboratory Medicine

Housestaff ~ 2011-2012



Serge Alexanian



Meenakshi Bhasin



Kritsanapol (Pong) Boon-Unge



Jordan Carqueville



Shelly Chang



Sue Chang



Matthew DeNicola



Harsha Desai-Basho



Rachel Finck



Gregory Fishbein



Matthew Fleming



John Grimwood



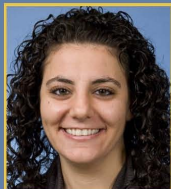
Dorina Gui



Jason Holly



Michael Kallen



Susan Kerkoutian



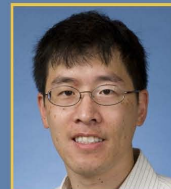
Mazdak Khalighi



Corina Kwan



Anna Laury



Thomas Lee



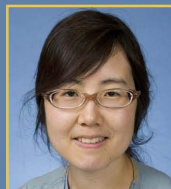
Erick Lin



Lawrence Low



Adelina Luong-Player



Shino Magaki



Brian Nagao



Anna Nguyen



Irma Oliva



Beth Palla



Sasa Pavlovic



Jeffrey Petersen



Tracie Pham



Kantang Satayasootorn



Sreelakshmi Ravula



Brit Shackley



Phillip Starshak



Albert Su



Eric Swanson



Sergei Tatishchev



Elizabeth Taub



Emma Taylor



Hana Vakil



Maria Vergara-Lluri



Anagh Vora



Winnie Wu



Steven Yea



IDA SUTTON: ASCLS Board of Directors

As a member of the Board of Directors for the **American Society for Clinical Laboratory Science**, Ida Sutton states unequivocally, "Any time you give to ASCLS you get back exponentially." She encourages *all* laboratory professionals to become active in the Society.

Ida has been a member of ASCLS for over 30 years. She joined when she was an intern in Battle Creek, Michigan and still maintains contact with many of the delegates she met at her first annual meeting in Miami Beach.

During the years, she has served on the Board of Directors as Secretary, Meeting Coordinator Chair, Exhibits Chair, President-Elect, President, Past President, Director-at-Large, Conference Committee

Chair, Education Committee Chair and Newsletter Editor. Her article about anticoagulation monitoring was featured as the cover story by *Advance Magazine*.

Ida's history at UCLA spans work in the perinatal, ER, and the Medical Plaza Laboratories (1981 - 1992) to her current position in the Santa Monica laboratory (2006 - 2011).

Ida encourages everyone to attend the 2012 ASCLS Annual Meeting which will be held in downtown Los Angeles. She says, "The best thing about being active in ASCLS is the opportunity to rub elbows with the brightest in our profession." More information about the meeting and ASCLS membership can be found at www.ascls.org.



Read the 2011 Annual Report on the Department's website:

http://www.pathology.ucla.edu/news/item?item_id=1335155

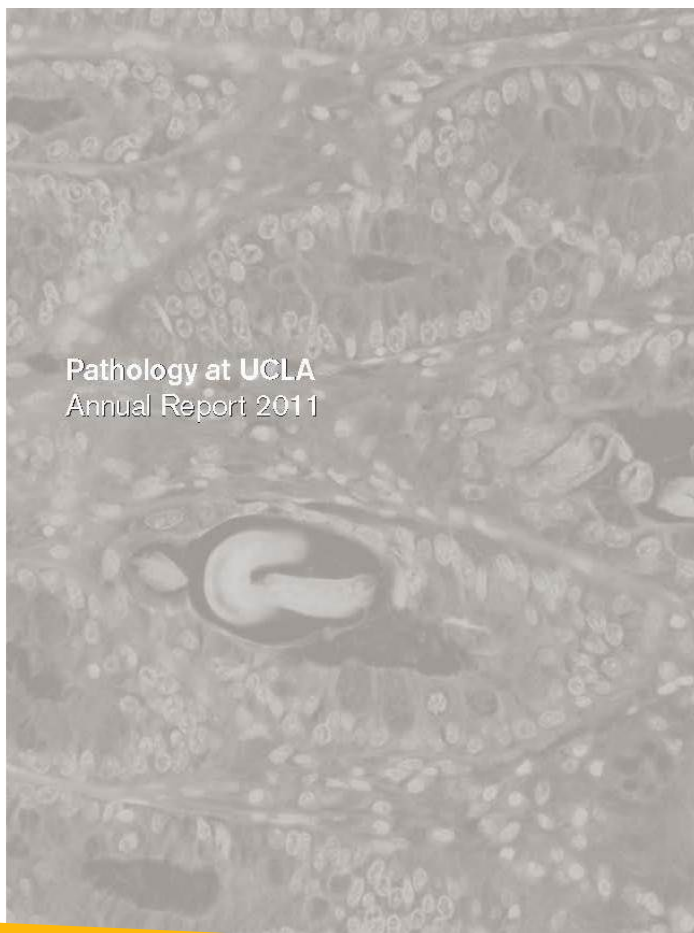
UCLA Blood & Platelet Center **UCLA** Health System

HOURS AND LOCATIONS

<p>1045 Gayley Avenue</p> <p>Whole Blood Donations Mon. & Wed.: 8:45am - 5:30pm Tue. & Thu.: 7:45am - 4:00pm Fri.: 7:45am - 4:15pm 2nd Sat. of every month: 8:00am - 1:15pm</p> <p>Platelet Donations Mon. & Wed.: 8:00am - 5:30pm Tue. & Thu.: 7:00am - 4:30pm Fri.: 7:00am - 5:00pm Sat.: 7:00am - 11:30am</p>	<p>Ackerman Student Union, A-Level</p> <p>Whole Blood Donations Mon. - Thu.: 11:00am - 5:40pm Fri.: 9:00am - 3:40pm</p> <p>Platelet Donations Mon. - Thu.: 11:00am - 3:45pm Fri.: 9:00am - 1:45pm</p>
---	--

www.gotblood.ucla.edu

For appointments call (310) 825-0888 x2 or email gotblood@ucla.edu



Pathology at UCLA
Annual Report 2011

We're on the Web:
<http://www.pathology.ucla.edu/>

<p>UCLA Department of Pathology and Laboratory Medicine 10833 Le Conte Avenue Los Angeles, CA 90095</p> <p>Phone: 310-206-4004 Fax: 310-267-2793 E-mail: ascheer@mednet.ucla.edu</p>	<p>Newsletter Committee:</p> <ul style="list-style-type: none"> • Arnie Scheer • Maya Conn • Polly Grimm • Ann Shadler • Bushra Yasin
--	---

Send us your suggestions of topics for future newsletters.
 Email mconn@mednet.ucla.edu