

VOLUME 7/2018

COMBATTING HEAVY EQUIPMENT THEFT



An Officer's Guide to the Proper Identification
of Construction Equipment



OSWCA

Ontario Sewer & Watermain
Construction Association

This guide book was produced by:

George Kleinsteiber

Retired Detective Constable
Auto Theft Section, Criminal Investigation Bureau
Ontario Provincial Police
Tel: 705-791-8000
heavymetal@rogers.com

Ontario Sewer and Watermain Construction Association

5045 Orbitor Drive, Unit 12, Suite 300
Mississauga, ON L4W 4Y4
Tel: 905-629-7766
Fax: 905-629-0587

Note: the contents of this guide book may be reproduced only with the written permission of the Ontario Sewer and Watermain Construction Association. Credit to the OSWCA must be included and clearly visible. Additional copies of this book may be obtained free of charge, prepaid shipping, by emailing kleinsge@rogers.com.

Disclaimer

The writer makes every reasonable effort to represent the information contained in this book as accurate at the time it was viewed. Vehicle descriptions and V.I.N. number locations may vary depending upon the Manufacturer's designation, but all examples shown were believed to be accurate at the time of viewing.



Introduction

The Ontario Sewer and Watermain Construction Association continues to work to combat the problem of construction equipment theft.

This guide book is designed to assist law enforcement officers in the location of public V.I.N. numbers on construction equipment. Every attempt has been made to ensure its accuracy.

Note: in this publication, VIN (Vehicle Identification Number) has the same meaning as PIN (Product Identification Number).

Table of Contents

Backhoe Loaders	4
Compactors – Padfoot	7
Compactors – Smooth Drum	8
Crawler Dozers	9
Excavators	12
Mini-Excavators	17
Rollers	22
Skidsteer Loaders	23
Track Loaders	28
Wheel Loaders.....	29
Acknowledgements	35

BACKHOE LOADERS

Serial Number Location



CASE

Models

480	580E	680	680G	780	580Super N
570L	580K	680B	680H	780B	580Super NWT
580B	580L	680C	680K	780C	590Super N
580C	590L	680D	680L	780D	580N EP
580D	590M	680E	580N		

Serial Number Sample

Old style – 7 or 8 Digit – example 9879000 or 17044575
 1988 and up – 10 Digit – example JJG0213787
 2004 and later – 9 Digit – example N5C388221
 (2nd Digit is year of Manufacture)
 2014 – 17 Digit – example JJGN580NCDC581129
 2017 – example JJGN58EPCHC740000

VIN plate location: Older 580B, C & D models: left side of dash just inside left door of cab. On older models either under the left door on side of frame rail or under the base of the left lift arm. Do not confuse the “ROPS” plate found inside the CAB for the VIN plate.



CATERPILLAR

Models

416, B, C, D, E, F				
420D, IT, E	430D, E	442D	420F	416F2
424D	432D	446B	430F	420F2
426B, C	436B, C	450E	450F	430F2
428B, C, D	438B, C, D	416F	415F2	450F2

Serial Number Sample

pre 2001 – 9 Digit – example 08ZK12345
 2001 – 17 Digit – example CAT0420DCFDPO2567
 2017 – VIN remains the same – example CAT0420FVPF400400

VIN plate location: On 416 series-right side of the machine just above base of the cylinder arm. Full VIN is stamped below it. All others have the VIN plate on the left side of machine (Hwy) above the base of the cylinder arm. The 420 series has the full VIN stamped on the right side of machine in the same location.

2017 All VIN plates are attached on left side of the machine, with public stamp of full VIN beside the VIN plate.



HYUNDAI

Models

H930C	H940C	HB100
-------	-------	-------

Serial Number Sample

17 Digit – example HHKHU701PE0000403

VIN plate location: On either the curb side or the highway side of the machine in front of the cab under the lift arm. Similar to Caterpillar.

BACKHOE LOADERS



Serial Number Location



JCB

Models

214	1CX	1CXT	3CX-I4
215	2CX	4CN	3CX-I4 Super
217	3CX	5CX	4CX-I4
CS	4CX	3CX Compact	4CX-I4 Super

Serial Number Sample

17 Digit – example..... SLP214FCXE0484824

VIN plate location: On the right or left side of cab depending on model, just above the cylinder arm, same location as Caterpillar. The last 6 of the VIN may be stamped in a red box on the curb side of the frame of the machine just under the engine compartment opening. On some models it may be the full 17 Digit stamped.



JOHN DEERE

Models

210C	310SE	510B, C, D	315SK	310SL
300B	310SG	610C	410K	315SL
301A	401B, C, D	710B, C, D	710K	410L
302A	410B, C, D, E, G	310K	210L	710L
310A, B, C, D, E	500C	310SK	310L	

Serial Number Sample

13 Digit – example..... T0310SE835218
 2014 – 17 Digit – example 1T0710KXJDE255298

VIN plate location: Older models – (80's) on the side of the frame behind either the left or right front wheel. On all other models the VIN plate is attached just above left (highway side) cylinder arm. Same location as Caterpillar and Case. On older model 13 Digit VIN machines the last 6 of the VIN will be stamped under the VIN plate using "Posi-dent" stamps. On newer (2004) and up, 17 Digit VIN plates will be in the same location but the full VIN will be stamped near the plate, but not under it. It will not be a "Posi-dent stamp only on models where it is underneath the VIN plate.



KOMATSU

Models

WB14	WB150	WB93R	WB975	WB9355	WB9755
WB140	WB156	WB97, R	WB93R5	WB97R5	

Serial Number Sample

7 Digit – example..... A106357
 17 Digit – example..... KMTWB016P36124455

VIN plate location: Behind the brake pedal on the firewall in the operators cab.

Note: In 2017 Komatsu is no longer shipping backhoes to North America. Models are being produced for Europe and other areas of the world. But many machines are arriving in North America as "second hand".

BACKHOE LOADERS

Serial Number Location



KUBOTA

Models

B26	L39	L45	M59	B26	L47	M62
-----	-----	-----	-----	-----	-----	-----

Serial Number Sample

5 Digit – example.....52245

VIN plate location: The VIN label is located on the curb side of the frame above the front axle. The full VIN is also stamped in beside the VIN label. Often when a front attachment is installed the VIN label is covered.



NEW HOLLAND

Models

LV80	LB110	B90B	B110BC	B95C	B110C
LB90	LB115	B95B, C	B115B	B95TC	

Serial Number Sample

9 Digit – example.....LLV001032

17 Digit – example.....FNHOB95CNDHH03291

VIN plate location: Same location as on older New Holland machines and Case, on highway side under support arm. On new 17 Digit VIN models the plate is located on the curb side in the same location under the support arm.



VOLVO

Models

BL60B	BL70B
-------	-------

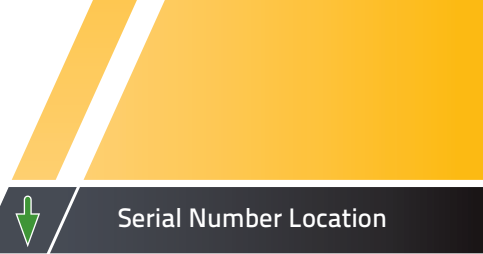
No models were produced in 2017 for North America, but may show up as “second hand” machines.

Serial Number Sample

17 Digit – example.....VCE0B70BP00330229

VIN plate location: On the curb side (right side) of the machine below and in front of windshield similar to new style New Holland Backhoes.

COMPACTORS – PADFOOT



CATERPILLAR

Models

CP44	CP74	CS64	CS323C	CP56B	CP44	CP56B
CP56	DS44	CS74	CP563C	CP68B	CP44B	CP68B
CP64	CS54	CS76	CP54B	CP74B	CP54B	CP74B

Serial Number Sample

17 Digit – example..... CATCP323KEAS00219

VIN plate location: On highway side rear corner of machine behind rear tire. Full VIN is stamped below plate.



DYNAPAC

Models

CA-301	CA1500PD	CA702PD	CA4000D	CA510PD
CA302PD	CA2500PD	CA1400D	CA1300PD	CA5500PD
CC252PD	CA3500PD	CA1500D	CA1400PD	CA6000PD
BW124PDH	CA6000PD	CA2500D	CA150PD	CA610PD
BW145PDH	CA150PD	CA250D	CA2500PD	CA702PD
BW177PDH	CA2500PD	CA255D	CA250D	CT3000
BW211PD	CA4000PD	CA270D	CA3600PD	
BW213PDH	CA510PD	CA2800D	CA4000PD	
BW219PDH	CA6000PD	CA3500D	CA4600PD	
CA1300PD	CA610PD	CA3600D	CA5000PD	

Serial Number Sample

8 Digit – example..... 66320778

17 Digit – example..... 1000158KFA014522

VIN plate location: On newer units behind the top step on the highway side of the machine. On older models it may also be located on the steering console or on the curb side under cab.



VOLVO (SUPERPAC)

Models

SD45B	SD45D	SD45F
-------	-------	-------

Serial Number Sample

17 Digit – VCESD45BL05230004

VIN plate location: Behind top step on curb side.

In 2003 Volvo purchased Super Pac from Champion Manufacturing (Champion motor graders) and stopped producing these units under Superpac's name. They are now Volvo. Call Volvo for assistance in identifying.

COMPACTORS – SMOOTH DRUM

Serial Number Location



BOMAG

Models

BW-10AS	BW-100-AD	BW177D	BW120AC-5	BW190AD-4HF
BW-121A	BW-130AD	BW197DH	BW135AD-5	BW190AD-5
BW-140A	BW135AF	BWBW211D	BW138AC-5	BW206AD0-5
S-35	BW142D	BW213D	BW138AD-5	BW190AD-4AM
S-46	BW172D	BW214D	BW141AD-5	BW213-DH4BVC
S-812	BW-210	BW226D	BW151AD-5	
S-1014	BW-210A	BW332D	BW161AD-4	
BMP-851	BW-210PD	BW120SL-5	BW161AD-5	
BW-90AD	BW145D	BW120AD-5	BW161AD0-5	

Serial Number Sample

10 Digit – example..... DAC0202789
 17 Digit – example..... DAC350K7NES7P1001
 2017 – 12 Digit – example 101462031949

VIN plate location: Either on column near steering wheel or below floor of operator's cab behind top step either highway or curb side.



CATERPILLAR

Models

CP-323C	815F	CB224	CS56B	CP44	CP56B	CS78B
CS-423E	825G	CB334	CS68B	CS44B	CS64B	
CP-433E	816F	CB335	CS74B	CP44B	CP68B	
CS-563C	826G	PS-150B	CS78B	CS54B	CS68B	
CS-573D	836G	CS44	CS34	CP54B	CS74B	
CS-583D	CB214	CS54B	CS44	CS56B	CP74B	

Serial Number Sample

10 Digit – example..... DAC0202789
 17 Digit – example..... CATCS433VASR00329

VIN plate location: On the left rear frame directly behind rear tire. The full VIN is stamped directly below or beside the VIN plate.



HAMM

Models

H5i	H13i	H18i	3410P	3414	3410
H5i-P	H13iVLO	H18iP	3411	3414-HT	3410-P
H7i	H13iP	H20i	3411P	3414-VLO	3411
H7iVLO	H13iC	H20iP	3412	3414-HT-VLO	3411-P
H71P	H13i-CP	H20iC	3412-HT	3414-P	3625
H11i	H14i	H20iC-P	3412-VLO	3516	
H11iP	H14iP	H25i	3412-HT-VLO	3518	
H12i	H16i	H25i-VC	3412-P	3520	
H12iP	H16i-P	3410	3412-HT-P	3625-HT	

Serial Number Sample

2017 – example H1994161

VIN plate location: On the curb side or Hwy side (depending on model) under the cab near the articulation joint. Full VIN is also stamped in under cab on curb side.

CRAWLER DOZERS



Serial Number Location



CASE

Models

550G, H	1450B	750M
650E, G, H, L, M	1550	850M
750L, M	1650K, L	1150M
850B, C, D, E, G, H, L, M	1850B, C, E, K, L, M	1650M
1150B, C, D, E, G, H, K, L, M	650L	2050M

Serial Number Sample

pre 1988 – 7 Digit – example.....	8480151
1988-2008 – 10 Digit – example.....	JJG0216015
2008 and up – 10 Digit – example.....	N7DCA16000
2009 – Italian made – example.....	ZEF01850S00210100
2013 – 9 Digit – example.....	NDD070038
2017 – 17 Digit – example.....	JJGN650LHGC100042

VIN plate location: On old models-right side of cab(when sitting) near the floor. On 2008 and newer models the plate is attached near the front on the hwy side engine cover.



CATERPILLAR

Models

D2	D11T	D7E
D3B, C, K D4B, C, D, E, G, H, K	D3K2	D8T
D5B, C, E, G, H, K, M	D4K2	D9T
D6B, C, D, E, G, H, K, M, N, R, T	D5K2	D10T2
D7C, D, E, F, G, R, T	D6K2	D11T
D8D, E, F, K, L, N, R, T	D6N	
D9D, E, G, H, L, N, R, T D10, E, T	D6T	

Serial Number Sample

Pre 2001 – 8 Digit – example.....	9T512345
2001 – 17 Digit – example.....	CAT00D5MC3CR01975
2017 – 17 Digit – example.....	CAT00D5KLY202737

VIN plate location: Up to D4 models, on the left side of the engine compartment near the cab area. On D5's up to G model, VIN plate is on hwy side in front of cab. On D5K models under the cab above the rear of the left track. On all larger models, on the rear of the machine left side up high on the end of the left frame rail and may be hidden by large ripper attachments.



DRESSER/DRESSTA/LIUGONG

Models

TD-7, R	TD10R	TD-15, M	TD-25, M	TD-40, E	TD-10	TD-20
TD-8, R	TD-12	TD-18	TD-30	TD-8	TD-14	TD-25
TD-9, R	TD14M	TD-20, M	TD-35	TD-9	TD-15	TD-40

Serial Number Sample

14 Digit – example:..... 4370001U000599
 Dresser split became Komatsu. 2017 Dressta is now part of Liugong

VIN plate location: On smaller machines, on the kick plate behind the driver's feet, as shown. On large machines, in the engine compartment on firewall on the right (curb) side. It is necessary to open the engine hood to observe.

CRAWLER DOZERS

Serial Number Location



KOMATSU

Models

D21A	D53A	D375A	D39EXi-23	D61EXi-23
D21P	D575	D475A	D39PXi-23	D65EX-17
D31EX, PX	D61EX-15, PX	D555A-3	D39EXi-24	D65EXi-18
D37EX, PX	D65EX, PX	D575	D39PXi-24	D65WX-17WH
D38E	D65WX	D37EXi-23	D39EX-23	D85EX-15
D39EX, PX	D68-ESS	D37PXi-23	D39PX-23	D85EXi-18
D41E-6C	D85EX-15, PX	D37EX-23	D39EX-24	D155AX-7
D41P-6C	D155AX-5B	D37PX-23	D39PX-24	D275AX-5WH
D45A, P	D275AX-5	D37EX-24	D51EXi-22	D375A-6
D51EX, PX	D335A-5	D37PX-24	D51PXi-22	D475A-5

Serial Number Sample

4, 5 or 7 Digit – example..... 4581, G1030 P085567
 17 Digit – example..... KMTHD030C29007641
 2014 – 17 Digit – example KMTOD122C01090489
 2017 – 17 Digit – example KMTOD129AGBB60276

VIN plate location: Left outside of cab behind door area. On some 2010-2013 machines, on the front left side of the engine cover plate. On older models, in the cab behind the driver's seat.



LIEBHERR

Models

PR716	PR731	PR736	PR746	PR766
PR726	PR734	PR744	PR756	PR776

Serial Number Sample

11 Digit – example..... PR731CL-1095

VIN plate location: Hwy side on front of engine panel



NEW HOLLAND

Models

D75	D95B	C190	D125C
DC80	DC100	DC180	D150C
D85B	C185	7D	D180C

Serial Number Sample

8 Digit – example..... 13141102
 9 Digit – example..... N7DC95602

VIN plate location: On the kickpad behind the driver's left foot. On new model machines the VIN plate is attached up high at the front of the machine on the highway side, similar to Case.

As of 2017 New Holland no longer imports Bulldozers into North America.

CRAWLER DOZERS



Serial Number Location



FIAT ALLIS

Models

8	16, B	650	FD10	FD40	FD195L
10, B, C	21, B, C	FD5	FD14C	FD50	FD255 HD9
11	31	FD7	FD20	FD80	
14	41	FD9	FD30	FD175	

Serial Number Sample

12 Digit – example.....20BC1T008020

Fiat Allis was absorbed into CNH Global and is now branded under New Holland Construction.

VIN plate location: On smaller models, on Plate attached to firewall under dashboard in driver's compartment, or on left side driver's toolbox. On larger machines, may be on engine firewall, or stamped in to final drive case, at right rear of machine, under cab and just over top of track.



INTERNATIONAL/HOUGH/DRESSER

Models

TD-7	TD-9	TD-15	TD-20	TD-30	TD-40
TD-8	TD-12	TD-18	TD-25	TD-35	

Serial Number Sample

14 Digit – example.....4370001U000599

In 1982 International/Hough was purchased by Dresser.

In 1988 Dresser was purchased by Komatsu.

VIN plate location: On smaller machines, on the kick plate behind drivers feet. On large machines, in the engine compartment on the firewall on either the right or left side.



JOHN DEERE

Models

450H, J, K	650H, J, K	750C, D, E, H, J, K	950J, K
550H, J, K	700C, E, J, K,	850C, D, J, K	1050C, J, K
764High Speed Rubber Track			

Serial Number Sample

13 Digit – example.....T0450HH863865

13 Digit (Liebherr Mfr.) – example LU1050C005288

17 Digit – example.....1T0700KXHDE255234

VIN plate location: As shown. Other locations for the VIN plate are directly under the edge of the left (highway) side driver's door, or above the track on the right side of the machine in the same location. On 700H the VIN plate is on the hwy side under the cab above the track. On 700J and K models the VIN plate is attached to the front edge of the step plate on the curb side of the operators cab. On 2017 950K the VIN plate is attached to the front curb side of engine hood halfway down. On 450 models up to K models it is on the hwy side down front just above the track. On J & K models it is also under the cab on the hwy side above the track.

EXCAVATORS

Serial Number Location



CASE

Models

40LC	9010	CK62	CX160C	CX470C	CE250D
125B	1080	CX75C	CX210	CX700B	CE300D
170B	1085	CX80C	CX210C	CX800	CE350D
220B	1086	CX120	CX235CSR	CX800B	CE490D
688	1088	CX130	CX250	CX80C	CE500D
880	1187	CX130C	CX250C	CX130D	CE750D
888	1280	CX145CSR	CX300C	CE160D	CE210DLR
9007	1286	CX160	CX350C	CE210D	CE250DLR

Serial Number Sample

10 Digit – example..... DAC0202789
 2014 – 17 Digit – example DAC350K7NES7P1001
 2017 – 17 Digit – example HHKHMC15PH2000024

VIN plate location: On full size machines, right side lower on the lower edge of the cab below the windshield (same as Caterpillar and John Deere) Some large model machines may have the VIN plate in the cab near operators right hand. The VIN plate is glued on older models. New ones with the large VIN plate maybe attached with polished stainless rivets. On mid-size models it may be glued on somewhere near the boom assembly.



CATERPILLAR

Models

205	215	235	316E	326F	374, F	323F	390F
206	224	311, F	318, E, F	328D	385	325F	
211	225	312, E	320, E, F	330	390	330F	
212	227	313	321D	336, E, F	313F	335F	
213	229	314E	322	345	315F	349F	
214	231	315	325	349	316F	352F	

Serial Number Sample

Pre 2001 – 8 Digit – example..... 4SS01498
 2001 – 17 Digit – example CAT0385BCANS00237
 2017 – 17 Digit – example:..... CAT0323FLYEJ00124

VIN plate location: Right side exterior of the operators cab below the window. Same location as Case and John Deere. On pre 1990 models there may be a second VIN plate on either the left side of the operators seat as you open the door, or it may be on the curb side in the cab by the operators right foot. On an old 215, 225 and 235 model machines the VIN plate is attached on the curb side of the right boom arm just above the ladder.

EXCAVATORS



Serial Number Location



DAEWOO/DOOSAN

Models

015	255	DX225, LC-3	DX520	DX140LCR-5
030	280	DX235-LCR	DX530LC-5	DX180LC-5
035	290	DX255-LC3	DX633	DX225LC-5
055	330	DX300, LC-5	DX700-LC	DX235LCR-5
070	400	DX340	SOLAR225	DX255LC-5
130	450	DX350-LC5	SOLAR300	DX300LC-5
170	DX85-R3	DX420, LC-5	SOLAR340	DX350LC-5
175	DX140, LC-R3	DX460	SOLAR420	DX420LC-5
220	DX175	DX480	SOLAR470	DX490LC-5
225	DX180, LC-3	DX490-LC5	DX140LC-5	DX530LC-5

Serial Number Sample

3, 4, or 5 Digit – example..... 164, 1105
 17 Digit – example..... DHKHEBKOT70001000

VIN plate location: Same as Caterpillar and John Deere.

In 2005 Daewoo was sold to Doosan.



HITACHI

Models

EX100	EX750	UH083	ZX180LC-5	ZX250LC-6	ZX135US-6
EX110	EX1000	UH122	ZX210LC-5	ZX300LC-6	ZX245USLC-6
EX160	EX1100	UH123	ZX250LC-5	ZX350LC-6	ZX210F-3
EX200	EX1200	UH143	ZX290LC-5	ZX380LC-6	ZX240F-3
EX230	EX2500	UH172	ZX350LC-5	ZX470LC-6	ZX290F-3
EX270	UH07	UH181	ZX380LC-5	ZX670LC-6	ZX370F-3
EX330	UH12	UH261	ZX470LC-5	ZX870LC-6	
EX450	UH045	ZX130-5	ZX570LC-5	ZX75US-5	
EX550	UH082	ZX160LC-5	ZX870LC-5	ZX85USB-5	

Serial Number Sample

7 to 10 Digit – example..... 12L-30858, 13KP 001355
 17 Digit – example..... HCMBAM00P00034000
 2017 17 Digit – example..... 1FFDDR70VGF940193

VIN plate location: Same location as Case, Caterpillar and John Deere.
 Right side of operator's cab below windshield.



HYUNDAI

Models

R130 LC-3	SK485	R140	R260	R1200	HX260L
R160 LC-3	R450 LC-3	R145	R290	HX140L	HX300L
R180 LC-3	SK850	R160	R300	HX145LCR	HX300LR
R210 LC-3	SK170C	R180	R320	HX160L	HX330L
R250 LC-3	SK210LC	R210	R330	HX180L	HX380L
R290 LC-3	SK260	R220	R380	HX220L	HX480L
R320 LC-3	SK295	R235	R480	HX220LR	HX520L
R360 LC-3	SK350	R250	R520	HX235LCR	

Serial Number Sample

11 Digit – example..... ELO11F10433
 17 Digit – example..... HHKHN623JD0000066
 2017 – 17 Digit – example..... HHKHK801TH0000458

VIN plate location: Same as John Deere, Case and Caterpillar. Right hand side of operator's cab below windshield.

EXCAVATORS

Serial Number Location



JCB

Models

JS70	JS160	JS210	JS330	JS190	JS360	JS160	JS330
JS115	JS180	JS220	JS360	JS220	JZ235	JS190	JS370
JS130	JS190	JS240	JS145	JS260	JS131	JS220	
JS145	JS200	JS260	JS160	JS330	JS145	JS300	

Serial Number Sample

6 Digit – example: 758853
 17 Digit – JCB2400VE69132456

VIN plate location: VIN is located on the front of the operator's cab. It may be on the front left or right, wherever there is space to attach the VIN plate.

JCB do not import large model excavators into North America.



JOHN DEERE

Models

70	230	493	130G	290G	85G	250GLC
80	2909	495	135G	350G	130G	300GLC
110	330	550	160G	380G	135G	350GLC
120	370	590	180G	470G	160GLC	380GLC
160	450	850	210G	670G	180GLC	470GLC
190	460	75G	245G	870G	210G	670GLC
200	490	85G	250G	75G	245GLC	870GLC

Serial Number Sample

up to 2004 – 13 Digit – exampleP00110X020133 FF892DC001922
 2014 – 17 Digit – example1FF085DXPA0016885
 2017 – 17 Digit – example1FF470GXPGF235033

VIN plate location: Same as John Deere, Case and Caterpillar. VIN plate is located on right side of operator's cab below side window.



KOBELCO

Models

17SR	SK130	SK350	SK230SRLC	SK230LC
27SR	SK135	SK485	SK260SRLC	SK260LC
30SR	SK150	SK850	SK350LC	SK270LRC
50SR	ED180	SK75SR	SK500LC	SK300LC
70SR	SK200	SK85CS	SK75SR	SK350LC
80CS	SK210	SK140SRLC	SK85CS	SK500LC
ED150	SK235	ED160	SK140SRLC	
ED185	SK260	SK210LC	ED160 SK170LC	
SK115	SK295	SK260LC	SK210LC	

Serial Number Sample

7 Digit – example YCU-1218
 9 Digit – example LA07-03062
 2017 – 9 Digit – example YH08-11303

VIN plate location: On older models, the VIN plate is located under the door on the highway side of the machine. On 2013 and newer models it is in the same location on the right side exterior of the driver's cab below the window, the same as Caterpillar and John Deere.

EXCAVATORS



Serial Number Location



KOMATSU

Models

PC100	PC250	PC1100	PC228	PC138USLC-11
PC120	PC270	PC1250	PC240	PC170LC-10
PC128	PC280	PC2000	PC290	PC210LC-10
PC150	PC300	PC3000	PC360	HB215LC-1
PC180	PC350	PC4000	PC390	PC228USLC-10
PC200	PC400	PC138	PC490	PC240LC-11
PC210	PC600	PC170	PC650	PC290LC-10
PC220	PC750	PC210	PC800	PC290LC-10SL
PC228	PC800	HB215	PC1250	

Serial Number Sample

6 Digit – example..... A83462
 2014 – 17 Digit – example KMTHB001T03002436
 2017 – 17 Digit – example KMTWB001L36A21521

VIN plate location: Same location as Case, Caterpillar and John Deere. The public stamping of the full VIN can be found on the front of the machine between the 2 hydraulic arms on a flat surface. Komatsu place a small decal bearing the word **KOMATSU** over their stampings.



LIEBHERR

Models

R900	R934	R992	R946	R976	R944C
R904	R944	R995	R950SME	R980SME	R946
R906	R954	R924	R954	R920	R950
R914	R962	R926	R956	R924	R950SME
R916	R964	R934	R960	R926	
R924	R974	R936	R966	R934-C	
R926	R984	R944E	R970	R936	

Serial Number Sample

7 Digit – example..... 649-5175
 2017 – 17 Digit – example WLHZ1444KZ0043458

VIN plate location: Curb side on the front of the machine near the support ladder. Stamped VIN may be found nearby.



LINK BELT

Models

1600	250X3	460X2	250X3	460X2	160X4
2650	300X3	75X3	300X3	700X2	210X4
2700	350X3	80X3	350X3	800X2	225
2800	470X3	135	470X3	75X3	235X3
3400	130X2	145X3	130X2	75MB	245X4SA
3900	160X2	225	160X2	80X3	250X4
4300	210X2	235X3	210X2	805B	300X4
5800	240X2	130X3	240X2	130X4	350X4
130LX	290X2	160X3	290X2	135	490X4
210LX	350X2	210X3	350X2	145X3	750X4

Serial Number Sample

8 Digit – example..... E419-1651 K3J26322
 17 Digit – example..... SMT200H6T00501106

VIN plate location: Same location as Case, Caterpillar and John Deere. On some older models the VIN plate may be attached inside the cab.

EXCAVATORS

Serial Number Location



NEW HOLLAND

Models

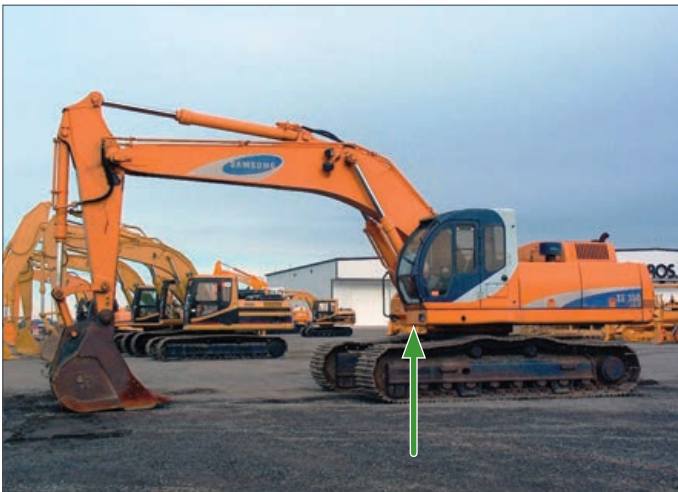
E70 E80 E130 E160 E175 E215

Serial Number Sample

7 Digit – example:7153811
New Style-N8DA12319 (2nd Digit is year of Manufacture 8=2008 9=2009)

VIN plate location: Same location as Case and Caterpillar. Plate may be held on with 2 sided tape or round pop rivets. Also check inside the cab near the operator's right elbow position.

As of 2014 New Holland no longer build large excavators but still build mini's.



SAMSUNG

Models

SE170 W SE210LG-3 SE50-3 SE240LC-3 SE280LC-3 SE350

Serial Number Sample

7 Digit – exampleAFY1832 FCY1246 EJY0112

VIN plate location: Same as Case, Caterpillar and most other Manufacturers.

In 1998 Samsung was purchased by Volvo and Samsung no longer build heavy excavators.



VOLVO

Models

EC55	EC290	ECR145D	EC350D	EC160E	EC380E
EC140	EC330	EC160D	EC380D	EC220E	EC480E
EC150	EC340	EC220D	EC480D	ECR235E	EC750E
EC210	EC360	EC250D	EC480C	EC250E	EC480EHR
EC235	EC380	EC300D	EC700C	EC300E	EC700CHR
EC240	EC460	ECR305C	EC140E	ECR305C	
EC250	EC140D	EC340D	ECR145E	EC350E	

Serial Number Sample

13 Digit – example EC290LCC03381
 17 Digit – example VCEC360BJ05580007
 2017 – 17 Digit – example EC330LBLCV10019

VIN plate location: Same as Case, Caterpillar and most other Manufacturers.

MINI-EXCAVATORS



Serial Number Location



CASE

Models

CX17B	CX36B	CX75	CX27B	CX55B	CX33C	CX60C
CX27B	CX50B	CX80	CX31B	CX17C	CX37C	
CX31B	CX55B	CX17B	CX36B	CX26C	CX57C	

Serial Number Sample

8 Digit – example..... N8TN02712
(2nd Digit is year of Manufacturer)
 17 Digit – example..... DAC270K5N7SAH1559
 2017 – 17 Digit – example HHKHMC15PH2000024 (Korea)
 NSUC37CCNZLN51014 (Italy)

VIN plate location: Usually on the face of the machine, depending upon space available to attach it with either bright aluminum rivets glued on with 2 sided tape. On left or right front corner of machine or on side of knuckle boom, as shown in photo.



CATERPILLAR

Models

300.9D	303.5	301.7D	305.5E	303E	307E2
301.4C	305	302.2D	308E2	303.5E	307E2
301.5	305.5	304.2D	300.9D	303.5E2	
301.6C	307	302.7D	301.4C	304E2	
301.8	308	303.5E	301.7D	304.5E2XTC	
302.5	300.9	304E	302.4D	303.5E2	
303	301.4C	305E	302.7D	305E2	

Serial Number Sample

Pre 2001 – 8 Digit – example..... 7BZ12345
 2001 – 17 Digit – example CAT03025K4AZ02708
 2017 – 17 Digit – example CAT3045EPFXT00130

VIN plate location: On the front of the machine below the cab wherever there is room for the VIN plate. Depending on size of machine, either on left front corner of machine or on side of knuckle boom, as shown in photo, similar to Case.



GEHL

Models

153	373	803	Z45	GEN2	GEN2
223	383Z	1202	Z80	Z45	M08
283Z	503Z	Z17	Z17	GEN2	M100
303	603	Z27	Z25	Z55	
353	753Z	Z35	Z35	Z80	

Serial Number Sample

8 Digit – example..... 13800878
 17 Digit – example..... GHL0383ZT00013458

VIN plate location: On the front left (Highway side) corner of the machine directly under the cab.

MINI-EXCAVATORS

Serial Number Location



HITACHI

Models

EX17U	EX60U	Zaxis160LC	ZX17U-2	ZX48U-5A	ZX26U-5
EX27U	Zaxis80	ZX8-2	ZX27U-3F	ZX66U-5A	ZX35U-5
EX35U	Zaxis120	ZX10U	ZX33U-5A	ZX65USB-5A	ZX50U-5
EX50U	Zaxis135US	ZX14-3	ZX38U-5A	Z17U-5	ZX60USB-5

Serial Number Sample

7 Digit – example.....10E-1736
 10 Digit – example.....1BSP220388
 17 Digit – example.....HCM1CG00C00049821
 2017 – 17 Digit – exampleHCMAFC60P00288097

VIN plate location: On older machines, on the hwy side on the front of the machine where ever there is space to attach it. Stamped VIN should be found close by.



JCB

Models

8008CTS	8040ZTS	51R-1	8008CTS	8025ZTS	86C-1
8018CTS	8045ZTS	55Z-1	8010CTS	8026CTS	90Z-1
8025ZTS	8055RTS	57C-1	80014CTS	8030ZTS	
8029CTS	100C-1	65R-1	80018CTS	8035ZTS	
8035ZTS	48Z-1	67C-1	8020CTS	85Z-1	

Serial Number Sample

17 Digit – example.....SLP080326E1177048

VIN plate location: On the front face of the machine either on the right or left side.



JOHN DEERE

Models

15	27D	35ZTS	60D	50G	35G
17D	27ZTS	50	17D	60G	50G
17ZX	30	50D	27D	17G	60G
25	35D	50ZTS	35G	26G	

Serial Number Sample

13 Digit – example.....T0017ZX219971 FF050ZX240447
 17 Digit – example.....1FF060GXHA0016392
 2017 – 17 Digit – example1FF030GXEGK265002

VIN plate location: Depending on size of machine, either on the left front corner of the machine or on the side of the boom or wherever there is room to attach.

MINI-EXCAVATORS



Serial Number Location



KOBELCO

Models

SK10SR	SK27SR	SK35SR-6	SK17SR	SK35SR
SK17SR	SK28SR-6	SK45SRX-6	SK25SR	SK45SR
SK20SR	SK30R-6	SK55SRX-6	SK30SR	SK55SRX

Serial Number Sample

Older models – 7 Digit – example.....PW38166
 2010 and up – 8 Digit – example.....LF4-01865
 2017 – 9 Digit – examplePX17-41661

VIN plate location: On older models a thin plate with the stamped number is attached on the highway side of the machine below the cab. This plate is attached with pop rivets. On 2010 and up the plate is attached to the front of the machine near the boom arm in several locations, wherever it will fit. On the left side of the face of the cab directly below the operators foot pedals, or on the curb side on the face of the cab to the right of the knuckleboom.



KOMATSU

Models

PC09	PC30	PC58	PC78US-8	PC55MR-5
PC12	PC35	PC78	PC88MR-8	PC78US-10
PC15	PC40	PC27MR-3	PCE88MR-10	PC88MR-10
PC18	PC45	PC35MR-3	PC30MR-5	
PC20	PC50	PC45MR-3	PC35MR-5	
PC27	PC55	PC45MR-3	PC45MR-5	

Serial Number Sample

4 or 5 Digit – examples 2379 37195
 17 Digit – example..... KMTPC212C04016229

VIN plate location: On right front edge of cab under window glass or on left side of boom on front of frame. Depending on the size and model of machine it may move to a slightly different location, but will always be near the bottom of the boom arm. On new 17 Digit models.near the bottom of the boom arm. Attached with drive nails.



KUBOTA

Models

KX41	RX301	U45	U17	KX057-4
KX41-2	RX302	U55	U25	KX080-4S
KX61-2	RX303	K008-3	U35-4	U17
KX71	K008-3	KX018-4	U55-4	U25
KX101	KX91-3	KX71-3	K008-3T4	U35-4
KX121-2	KX057-4	KX91-3	KX018-4	U55-4
KX151	KX080-3U17	KX040-4	KX71-3ST4	
KX161-2	U25	KX057-4	KX033-4	
KX191	U35	KX080-4	KX040-4	

Serial Number Sample

5 Digit – example.....11166
 17 Digit – example..... JKUU0354T01H10023
 2017 – 17 Digit – example WKFRGF1500Z043395

VIN plate location: On right (curb) side front edge of the cab under the window glass. Depending on size and model of machine it may move to a slightly different location, but will always be near the bottom of the boom arm. Similar to Komatsu. Stamped VIN on top of knuckleboom.

MINI-EXCAVATORS

Serial Number Location



LIUGONG

Models

904C	925LC	CLG904D	CLG925E	CLG930E
906C	933LC	CLG906D	CLG915E	CLG936D
908C	CLG904C	CLG908D	CLG922D	CLG936E
915C	CLG906C	CLG925LL	CLG915D	CLG950E
922LC	CLG908C	CLG922E	CLG925D	

Serial Number Sample

17 Digit – example..... CLG00904T00025765

VIN plate location: On the top of the boom joint at the bottom of the excavator arm. Depending on size and model of machine it may move to a slightly different location, but will always be near the bottom of the boom arm.



MELROE (BOBCAT)

Models

320	331	425	418	E35	E63	E32i	E45
322	334	E32	324	E42	E85	E32	E50
324	337	E35	E26	E45	418	E35i	E55
325	341	E42	E32	E50	E20	E35	E63
328	418	E45	E35i	E55	E26	E42	E85

Serial Number Sample

9 Digit – example..... 562316266

2017 – 8 Digit – example B3WZ11001

Note: In 2014 Melroe joined with Doosan

VIN plate location: On either the right or left side on the front face of the machine below operator's cab, as shown in photo.



MITSUBISHI

Models

ME25	ME40	MM35	MM45	MM55	MX55
------	------	------	------	------	------

2017 models: No models were being manufactured in 2017

Note: This product is often fraudulently painted to resemble a Caterpillar machine and sold for more money. If the machine you are examining has a VIN number that starts with E1F you are looking at a Mitsubishi. Refer to Caterpillar for a sample of their VIN numbers. Caterpillar own the "rights" to the black and red "shark fin logo labels."

Serial Number Sample

8 Digit – example..... E1F00101

VIN plate location: On the curb side of the operators cab, similar to Caterpillar. On the right (curb) side of the cab below the window, or on the opposite side of knuckle boom. Depending on size and model of the machine it may be found on either side of the knuckle boom

MINI-EXCAVATORS



Serial Number Location



TAKEUCHI

Models

TB015	TB108	TB153FR	TB228	TB1140	TB240
TB016	TB125	TB175	TB235	TB210R	TB260
TB025	TB135	TB180R	TB250	TB216	TB290
TB30UR	TB138FR	TB108	TB260	TB216H	TB2150
TB045	TB145	TB016	TB285	TB230	TB280FR

Serial Number Sample

7 Digit – example..... 1151234
 9 Digit – example..... 216100054

VIN plate location: On the right or left side of the front face of the machine below operator's compartment. Similar to Melroe (Bobcat). On 2014 and newer models at the bottom of the boom arm on top of the yoke.



VOLVO

Models

281	EC35C	ECR38	EC20D	EC60E	ECR40D
283	EC55C	ECR58D	EC210D	EW60E	ECR58D
EC20C	ECR25D	ECR88D	EC35D	ECR25D	ECR88D

Serial Number Sample

7 Digit – example..... 2811574
 17 Digit – example..... VCE0EC58A00011275
 2017 – 17 Digit – example EC210BLCV1004566

VIN plate location: On the front face of the machine below the operator's compartment. Dependent on size of machine it may be located anywhere on the front face of the machine. On new models full VIN will be stamped in on top of knuckleboom.



YANMAR

Models

B2	Vi027	SV08	Vi027-5B	SV08-1A	Vi035-6A
B3	Vi035	SV100	Vi035-6	SV100-2	Vi045-6A
B5	Vi045	Vi017	Vi045-6A	SV08-1B	Vi055-6A
Vi017	Vi055	Vi020-3	Vi0556A	Vi017-A	Vi080-1A
Vi020	Vi080	Vi025-6	Vi080-1	Vi025-6A	SV100-2A

Serial Number Sample

6 Digit – example..... 89985B
 17 Digit – example..... YMHC128YPDYJ27554

VIN plate location: On the right or left side of the front face of the machine below the operator's compartment. Similar to Melroe (Bobcat). On 2014 and newer, on the left side (highway) of the boom. Vin plate may be either a metal plate or foil label.

ROLLERS

Serial Number Location



BOMAG

Models

BW900-50	BW120	BW151	BW206
BW90AD-5	BW135	BW161	BW11
BW100ADM-5	BW138	BW190	BW27
BW100SL-5	BW141	BW191	

Serial Number Sample

12 Digit – example..... 101462031940

VIN plate location: On curb side on front half of articulating unit.



HAMM

Models

HD8VV	HD12VV	HD1VV	HD80IVV	HD1010IVV	HD140IVV
HD10CVV	HD13IVV	HD70IVV	HD90IVV	HD120IVV	DV70IVV

Serial Number Sample

8 Digit – example..... H1770068

VIN plate location: On smaller rollers- in the articulation joint. On larger rollers, near the driver's point of entry into the cab.



VOLVO

Models

ABGPTR240	DD120B	PT125C	DD35B	DD15
DD140B	DD120C	DD110B	DD30B	CR30
DD140C	PT125	DD105	DD25B	CR24

Serial Number Sample

17 Digit – example..... VCED120BC05287166

VIN plate location: On curb side back side of front roller unit.

SKIDSTEER LOADERS



Serial Number Location



BOBCAT (MELROE) (IR)

Models

453	A300	T110	S70	S750	T650	S630	T630
553	A770	T140	S100	S770	T750	S650	T650
751	S70	T180	S130	S850	T770	S740	T740
753	S100	T190	S510	A770	T870	S770	T750
763	S185	T300	S530	MT52	S70	S850	T770
773	S205	T630	S550	MT55	S450	A770	T870
863	S330	T650	S570	T110	S550	T450	
864	S750	T750	S590	T550	S570	T550	
873	S770	T770	S630	T590	S590	T590	
963	S850	T870	S650	T630	S595	T595	

Serial Number Sample

9 Digit – example: 5144, 18702, A3W611011, AHGL11001

VIN plate location: On smaller models, on the left side at the rear, under the left support arm, same as Caterpillar. On larger machines on the left (highway) side behind the cab towards the rear of machine under the left lift arm. Beginning on 2014 models the plate may be on the curb side of the machine, behind the cab and between the lift arm and the hydraulic support arm. Location depends upon space to attach the plate with large pop rivets.



CASE

Models

40	420	1835	SR250	SR220	SR160	SV340
45XT	430	1845C	SV250	SR250	SR175	TR270
60XT	435	SR130	SV300	SV250	SV185	TR310
75XT	440	SR150	SR130	SV300	SR210	TR340
85XT	445	SR175	SR160	TR270	SR240	TV380
90XT	450	SV185	SR175	TR320	SR270	
95XT	465	SR200	SV185	TV380	SV280	
410	1825B	SR220	SR210	SR130	SV300	

Serial Number Sample

10 Digit – example JAF0242168

9 Digit – example N8M484950

17 Digit – example JAFSR160PDM477840

2017 – 17 Digit – example JAFSV340LGM425944

VIN plate location: On pre 2001 machines, the plate was behind the operators left knee in the cab. Beginning in 2001 to 2008 it was moved to behind the operators right knee. Beginning in 2008 a new VIN plate design was attached on the left side behind the cab, under the left support arm. In 2013 on some models it was attached on the curb side (right) in the same area as the left location. Some new models 2014 and up, have the plate attached on the rear of the machine under the base of the left lift arm. (similar to old style Bobcat and Caterpillar) Location is determined by space available for securing the plate, always with two-sided tape (which will be white in colour, not black).

SKIDSTEER LOADERS

Serial Number Location



CATERPILLAR

Models

216	246	272	242D	247B	279D	236D	272D
226	248	277	246D	257D	289D	242D	XHP
228	252	287	262D	277D	299D	246D	272D2
236	262	226B	272D	287D	226D	262D	272D2
242	267	236D	272-XHP	259D	232D	272D	XHP

Serial Number Sample

Pre 2001 – 8 Digit – example.....4ZN12345
 2001 – 17 Digit – example CAT00262LCED001660
 2017 – 17 Digit – exampleCAT0259DJFTL10686

VIN plate location: On smaller models, on the left side at the rear of the machine, under the left support arm. On larger models the plate is found on the left side (highway) behind the cab under the lift arm (similar to Melroe Bobcat). Beginning in 2014 the plate may also be found on the right side (curb) similar to the left side location. In 2014 Caterpillar began stamping the full 17 Digit VIN on the front of the machine as shown by the arrow in the photo.



GEHL

Models

1640	4835	7810	3640E	R160	R105	GEN2	RT210
2076	5625	CTL55	4240E	R165	R135	V330	GEN3
3640	5635	CTL65	4640E	R190	R150	GEN2	RT250
4240	5640	CTL75	5240E	R220	R165	V400	GEN3
4625	6636	CTL85	5640E	R260	R190	V420	VT320
4640	6640	V270	6640E	V270	R220	RT165	

Serial Number Sample

5 Digit – example 11385
 Beginning in 2005 – 17 Digit – example GHLO3935T00001822
 2017 – 17 Digit – example GHLOR165GOD198416

VIN plate location: The VIN label on older machines is on the right side at the rear of the machine, under the right support arm. Newer models have the VIN label attached on the rear, left inside (highway side), same as Bobcat and Caterpillar. Gehl and Mustang are owned by the Manitou Group and resemble each other.



JCB

Models

160	320	205	205T	205	225T
165	360	225	225T	225	260T
180	1105	260	260T	260	300T
185	2085	280	300T	280	320T
225	135	300	320T	300	325T
260	155	330	155	330	
280	175	150T	175	205T	

Serial Number Sample

17 Digit – example.....SLP1855AXE7468967, GE0300WVAA1745600

VIN plate location: On single arm models on the right side at the rear of the machine, near the right support arm. On all other older model machines, the same location as Bobcat and Caterpillar on the rear inside of the left (highway) side support arm. On 2014 model machines JCB use a mylar type VIN label instead of the older metal plate. JCB stamp the VIN on the machine near the VIN plate and put a red box around it to make it more visible.

SKIDSTEER LOADERS



Serial Number Location



JOHN DEERE

Models

60	309	4475	326E	318G
70	320	5575	328E	320E
90	323	6675	332E	324E
125	326	7775	319E	330G
170	328	8875	323E	332G
250	329	CT322	329E	317G
270	332	CT332	333E	323E
313	333	313	312GR	331G
315	375	320E	316GR	

Serial Number Sample

13 Digit – example..... KV0270B270522
 2010 – 17 Digit – example 1T0318DATA0187199
 2017 – 17 Digit – example 1T0314GAAGJ305507

VIN plate location: On the old style machines the VIN plate is located up high on the right side ROPS support. On newer style (mid 2000's), on the right side support in the cab on the side by the operators right knee. On 2010 and up, the plate is on the right side of the machine (curbside) behind the operators cage. On 13 Digit VIN plates, the last 6 of the VIN are stamped underneath. On equipment with 17 Digit VIN plates the full VIN is stamped close to the VIN plate, but not under it.



KOMATSU

Models

SK510	SK818	SK1026	CK30	SK714-5
SK714	SK820	CK20	CK35	SK814-5
SK815	SK1020	CK25	SK510-5	SK820-5

Serial Number Sample

17 Digit – example..... KMDSK010P36A800001

VIN plate location: on the right side at the rear of the machine under the left support arm. The full 17 Digit VIN is stamped in near the VIN Plate Location.

Note: As of 2014 Komatsu are no longer building skidsteer loaders for the North American Market.



KUBOTA

Models

SVL75	SVL95	SSV65	SSV75
-------	-------	-------	-------

Serial Number Sample

17 Digit – example: JKUC0752T01S28941

VIN plate location: On the front of the machine on the highway side below the driver's compartment.

SKIDSTEER LOADERS

Serial Number Location



LIUGONG

Models

CLG325	375B	CLG385A111
375	385A	CLG385B111
CLG375	CLG355A	CLG385B1V
365A	CLG365A11	CLG395B111
380	CLG36B111	CLG365B
CLG385	CLG375A111	CLG375B111-YANMAR
365A	CLG375B111-PERKINS	CLG385B
375A	CLG375B1V	

Serial Number Sample

6 Digit – example.....800234
 17 Digit – example..... CLG0375BLDS002039

VIN plate location: In 2005 the VIN plate was located on the front cross member in front of the operators compartment. In 2007 it was moved to the left rear on the highway side.



MUSTANG

Models

940	2056	2012	1350R	2600R	1900R	1750RT
2012	2076	2026	1500R	2700V	2200R	2200RT
2021	2086	2041	1650R	3300V	2600R	2500RT
2026	2090	2044	1750RT	4000V	2700V	3200VT
2041	2109	2054	1900R	1050R	3300V	
2044	2700V	2056	2100RT	1350R	4000V	
2050	3300V	2076	2200R	1500R	4200V	
2054	3935	2086	2500RT	1650R	1650RT	

Serial Number Sample

6 Digit – example.....119284
 2005 – 17 Digit – example..... MMCO20255P00001123
 MMCO2700B00044081
 2017 – 17 Digit – example..... MMCO1050RBOD185001

VIN plate location: On the right side at the rear of the machine, under the right support arm. On large track machines the VIN label may be found on left (highway) side under lift arm, similar to Caterpillar and Bobcat. Gehl and Mustang are owned by the Manitou Group and resemble each other.



NEW HOLLAND

Models

L553	LX785	LS160	C232	223	L180	L228	C238
L555	LX865	LS170	213	225	L213	L230	
LX465	LX885	LS180	216	230	L216	L234	
LX485	LX985	LS190	218	L150	L218	C227	
LX565	LS140	C190	220	L160	L220	C232	
LX665	LS150	C227	221	L175	L221	C234	

Serial Number Sample

6 Digit – example.....134253
 9 Digit – example..... N7M460099
 (held on with two-sided tape)
 17 Digit – example..... CMUOL185NAM418685

VIN plate location: On most older models it is located on the right (curb) side of the cab post inside the cab near the operators right knee, same as John Deere. On the LX785 it is found on right (curb) side at the front of the ROPS cage. On newer models the VIN plate is located on the right side (curb) of the machine directly above the right front tire or track.

SKIDSTEER LOADERS



Serial Number Location



TAKEUCHI

Models

TL130	TL250	TS50R	TS60V	TL12R2
TL220	TL230	TS60R	TS70V	TL12V2
TL230	TL10	TS70R	TL8	TS80R2
TL240	TL12	TS50V	TL10V2	TS80V2

Serial Number Sample

9 Digit – example..... 224000983
 11 Digit – example..... T3R06000455

VIN plate location: On the left side at the rear of the machine, under the left support arm. Similar to Caterpillar and Bobcat. On 2016 and newer VIN plate is on the front of the machine in front of operator's door.



THOMAS

Models

85	135	170	243	255	137	185	85	153	250
105	153	175	245	85	153	250	105	175	255
133	165	225	250	105	175	255	137	185	

Serial Number Sample

8 Digit – example..... LE001355

VIN plate location: On the left or right side at the rear of the machine, under the support arm. Similar to Bobcat and Caterpillar.



VOLVO

Models

MC60	MC135	MC85C	MCT110C	MC95C	MCT125C
MC70	MCT125	MC95C	MCT125C	MC110C	MCT135C
MC80	MCT135	MC110C	MCT135C	MC115C	
MC90	SL110	MC115C	MC60C	MC135C	
MC110	MC60C	MC135C	MC70C	MCT85C	
MC115	MC70C	MCT85C	MC85C	MCT110C	

Serial Number Sample

Up to 2005 – 11 Digit – example..... MC60D103231
 2005 and later – 17 Digit – example..... VCEM110B907008973

VIN plate location: On the left or right side at the rear of the machine, under the left or right support arm, similar to Bobcat and Caterpillar. From 2016 and later the VIN plate was moved to the curb side of the machine under the support arm.

TRACK LOADERS

Serial Number Location



CASE

Models

455B, C 855C, D, E

Serial Number Sample

7 Digit – example.....3075500
 10 Digit – example.....JAK006025

VIN plate location: On right side of kickboard behind operators left or right foot. Same location as Case crawler dozers.

As of 2014 Case no longer build Track Loaders.



CATERPILLAR

Models

931	LGP	963C, D	963D	963K	973DWH
933C	939C	973C, D	973D	973D	963KWH
933C	953C, D	953D	953K	973DSH	

Serial Number Sample

Pre 2002 – 8 Digit – example.....4MS12345
 2002 and newer – 17 Digit – example.....CAT0973CD4MS12345

VIN plate location: On the left side of the machine on the lift arm support in front of the cab. The VIN is also stamped beside the plate. After 2002 the full 17 Digit are on the VIN plate and stamped in nearby.



JOHN DEERE

Models

455G	655G	655C	755K
555G	755D	755K	605K
605C	755G	605K	655K
655C	605C	655K	755K

Serial Number Sample

13 Digit – example.....T0455GA838887, LU755DX010773
 17 Digit – example.....1T0655KXCEE255403

VIN plate location: Same as on Caterpillar, except on older 455D models the VIN plate is on the front left side of the tool box, beside the operator in the cab. On 17 Digit VIN models the full 17 Digit should be stamped in near the VIN plate.

WHEEL LOADERS



Serial Number Location



CASE (FULL SIZE)

Models

521D, E	921B, C, E, F	921F	621G	1021G
621, B, C, E	621F	1021F	721G	1121G
721, B, C, E, F	721F	1121F	821G	
821B, C, F	821F	521G	921G	

Serial Number Sample

10 Digit – example.....	JAK0019259
2017 – 17 Digit – example	FNH321FHNCHP00614 (Italy)
2017 – 9 Digit – example	NGF240107 (U.S.A)
European models – example.....	5811733
2014 – example	NDF230015

VIN plate location: On some models the VIN plate will be on left (highway) side of machine under operator's cab. On models made in France it will be on the right side at the same location. VIN plates on the right side will have the full VIN stamped close to the VIN plate. These are built in U.S.A., Italy and France and VIN designations vary with where they are built. On 2015 models and up the VIN plate is on the back of the curb side lift arm (as indicated in photo).



CASE (MID SIZE)

Models

21E	221D	21E	221E	21F	XT	121F	221F
121D, E	321D	121E	321E	21F	121F	XT	321F

Serial Number Sample

European models – example.....	5811733
2014 – example	FNH000DUNDHP00375
2017 – 17 Digit – example	FNH321FHNCHP00614

VIN plate location: Mid-size machines are made in France, Belgium Germany and Italy. The VIN plate is usually silver or black and is found on the curb side halfway up the frame from bottom to underside of cab. Plate is held on with white two-sided tape.



CASE (OLD STYLE)

Models

W9	W10	W12	W15	W18	W20	W24
----	-----	-----	-----	-----	-----	-----

Serial Number Sample

7 Digit – example.....	9125501
10 Digit – example.....	JAK0025223

VIN plate location: Below dashboard inside the operator's cab. Do not confuse with the ROPS plate which is attached on the window support.

WHEEL LOADERS

Serial Number Location



CATERPILLAR (FULL-SIZE)

Models

928G, H	962G, H, K, M	982M	992G, H, K	IT24
930K	966G, H, K, M	986H, M	993K	IT28
938G, H, K	972G, H, K, M	988F, G, H, K	994D, F, G, H, K	IT38G, H
950G, H, K, M	980G, H, J, K, M	990H, K	IT18	IT62G, H

Serial Number Sample

Pre 2001 – 8 Digit – example.....3CL12345
 2001 and up – 17 Digit – exampleCAT0962GR4PW00533
 2017 – 17 Digit – exampleCAT0950MKEMB03640

VIN plate location: Left (highway side) of the machine behind the front tire. On Pre 2001 machines, there will be an 8 Digit VIN stamped in close to the VIN plate. On older 60's, & 70's machines the VIN plate is attached on right (curb) side of machine higher up in front of the drivers cab. On any machine that there is a 17 Digit VIN plate there will be a full 17 Digit VIN stamped very close to the plate but may be covered in paint.



CATERPILLAR (MID-SIZE)

Models

902G, H	914G	906H2	914G, K	906M	914M
906G, H	IT14G	907H2	924K	907M	926M
908G, H	924F, G, Hz	908H2	IT14G	908M	
910G,	928G, Hz	910K	903C2	910M	

Serial Number Sample

2016 – 17 Digit – exampleCAT0908MVH8800988

VIN plate location: Left side of machine (highway) ahead of cab near left front tire, similar to full size Caterpillar wheel loader. The full VIN will be stamped in nearby and may be covered in paint.



DAEWOO-DOOSAN

Models

Mega 250	PC430	DL300	DL200-5	DL300-5
Mega 300	PC460	DL350	DL200TC-5	DL350-5
Mega 350	DL200, TC	DL420	DL220-5	DL420-5
Mega 400	DL220	DL450	DL250-5	DL450-5
Mega 450	DL250 DL250TC	DL550	DL250TC-5	DL550-5

Serial Number Sample

4 Digit – example..... 1199

In 1997 Daewoo merged with Doosan becoming Daewoo-Doosan

2014 – 17 Digit – example DWGCWLAVHD1010088

2017 – 17 Digit – example DWGCWLDDPG1010001

VIN plate location: Right side (curb) behind front fender below driver's cab. On 2016 and newer machines the VIN plate is on the highway side directly under the front windshield.

WHEEL LOADERS



Serial Number Location



DRESSER/DRESSTA

Models

H-25B	H-80B	510	560	534
H-30B	H-90E	515	570	555
H-50C	H-100C	520	555C	560
H-60B	H-400C	540	560E	

Serial Number Sample

14 Digit – example.....3380146C003018

VIN plate location: Plate is attached in driver's cab on firewall near accelerator pedal.

Dresser split up and went to Komatsu. Dressta went to Liugong.



FIAT ALLIS

Models

FR9B	FR15	FR70	FR120	FR140.2	FR220	644
FR10	FR20, B	FW80	FR130	FR160	FR220.2	745, B, C, H
FR11	FR30	FR90	FR130.2	FR180	345B	945B
FR12	FR35	FR100	FR140	FR180.2	605B	

Serial Number Sample

13 Digit – example..... R20A2T510003

VIN plate location: Left side (highway) behind the front tire. Similar to Caterpillar and other makes, or under the left side edge of the operators cab.

Fiat Allis was absorbed into CNH Global in 2000 and is now branded under New Holland Construction.



HYUNDAI

Models

HL35	HL760	HL757	HL955 TM	HL965 XT	HL980 XT
HL720	HL770	HL760	HL955 XT	HL970	
HL730	HL780	HL770	HL960	HL970 XT	
HL740	HL835	HL880	HL960 XT	HL975	
HL750	HL730	HL940 TM	HL960 HD	HL975 XT	
HL757	HL740	HL940 XT	HL965	HL980	

Serial Number Sample

10 Digit – example.....801FD10125

9 Digit – example..... LF0110877

11 Digit – example.....HL730-908976

2017 – 17 Digit – exampleHHKHW400JH0000307

VIN plate location: Behind left front tire (highway side) similar to Caterpillar or on 2014 models and up, below the cab on the highway side of the machine behind the middle step.

WHEEL LOADERS

Serial Number Location



JCB

Models

406B	426B	436ZX	406	417	407	427
409B	426HT	456HT	407	427	409	437
411HT	426ZX	456ZX	409	437	411	457
416HT	436HT	403	411	457	417	

Serial Number Sample

17 Digit – example.....JCB45600E81239722

VIN plate location: On the left side of front articulation unit, similar to Caterpillar location. On 2016 and newer, VIN plate is on right side in same position as older models. On the left side (highway) or right side in similar location as Caterpillar, Case and Volvo, either directly behind front wheel, or higher up on same post. On some models near the VIN plate there should be a red box with the full 17 Digit stamped into the frame



JOHN DEERE (EARLY A, B, C, D MODELS)

Models

444, A, B, C, D	544, A, B, C, D	644, A, B, C, D	744, A, B, C, D	844, A, B, C, D
-----------------	-----------------	-----------------	-----------------	-----------------

Serial Number Sample

13 Digit – example.....CK444EB001911
Last 6 Digit of the VIN may be stamped under the VIN plate

VIN plate location: Under the lip of the cab on the flat frame on either right or left side of machine. Very hard to see. Second location is behind left (highway) side rear tire below cab of machine, as shown above in photo.



JOHN DEERE (FULL-SIZE)

Models

444H, K	544H, J, K	TC62H	744H, J, K
TC44H	TC54H	644H, J, K	824J, K
524K	624H, J, K	724K	844H, J, K

Serial Number Sample

13 Digit – example.....DW544HX565665
17 Digit – example.....1DW544KZLGF678797

VIN plate location: Under the top step of cab on left (highway) side. On older models, on the top of the flat surface on the left strut behind left front fender. On 17 Digit machines the full VIN is stamped above the VIN plate, not under it as was with 13 Digit VIN machines.

WHEEL LOADERS



Serial Number Location



JOHN DEERE (MID-SIZE MODELS)

Models

244H, J	344H, J	304K	204K	304K
304H, J	204K	324J	244K-II	324K
324H	244J	344K	244K	344K

Serial Number Sample

13 Digit – example.....LU304HX687838
 17 Digit – example.....1LU304KXPZB033902

VIN plate location: Behind left side (highway) front fender in same location as found on Caterpillar, but much lower due to size. On 17 Digit machines the full VIN is stamped above the VIN plate, not under it as with 13 Digit VIN machines.

These machines are built by Liebherr in Austria for John Deere. VIN plates are attached with pop rivets or glued on.



KAWASAKI/KCM

Models

42ZV-2	65TM-2	90ZV-2	60ZV-2	92Z7	60Z7	115Z7
45ZV-2	70Z-IV2	95Z-IV2	65TMV-2	95Z7	62Z7	135ZV-2
50Z-IV	70ZV-2	95ZV-2	65ZV-2	115Z7	67Z7	
50ZV-2	80Z-IV2	115Z-IV2	70TMV-2	135ZV2	67TM7	
60Z-IV	80ZV-2	115ZV-2	70Z7	30ZV-2	70Z7	
60ZV-2	85Z-IV2	135ZV	80Z7	40ZV-2	80Z7	
65Z-IV2	85ZV-2	42ZV-2	85Z7	42ZV-2	85Z7	
65ZV-2	90Z-IV2	45ZV-2	90Z7	45ZV-2	95Z7	

Serial Number Sample

8 Digit – example..... 65C34613
 17 Digit – example..... RYU4FG00T00000421
 2017 – 17 Digit – example RYUNCA60E00005149

VIN plate location: On left side of cab, similar to Caterpillar.

Kawasaki are manufactured by Hitachi in Japan and are now called KCM.



KOMATSU

Models

WA30	WA120	WA250	WA380	WA480	WA800
WA50	WA150	WA270	WA400	WA500	WA900
WA65	WA	WA300	WA420	WA600	WA1200
WA75	180	WA320	WA430	WD600	
WA95	WA200	WA350	WA470	WA700	

Serial Number Sample

5 to 6 Digit – example A30112, 53360
 17 Digit – example..... KMTWA046K26051090
 2017 – 17 Digit – example KMTWA134CGD090078

VIN plate location: Attached to right side (curb) on machine behind front fender. May also be found on right side under operators cab. Komatsu also stamp full VIN below plate in large stamps.

WHEEL LOADERS

Serial Number Location



LIEBHERR

Models

L506	L508	L510	L524	L538	L550	L566	L580
L507	L509	L514	L528	L542	L556	L576	L586

Serial Number Sample

2017 – 17 Digit – example VATZ1269CZB042632

VIN plate location: Attached to right side (curb) on machine behind front fender below driver's cab.



NEW HOLLAND

Models

W50B	LW90B	LW130B	LW190B	W80B	W170C
LW50B	W110B	W170B	LW230B	12D	W190C
W80B	LW110B	LW170B	LW270B	W110C	W270C
LW80B	W130B	W190B	W50B	W130C	

Serial Number Sample

6 Digit – example 601008

2003 and up (US Built) – example N3F000578

2004 and up (European Built) – example 560384

17 Digit – example ZEFOLW13000125500

VIN plate location: On some models VIN plate will be on left side (high-way) under operators cab. On other models it will be located on right side (curb) below cab. VIN plate may be usual Case-New Holland size, or larger 4"X5" usually found on new models (2009 and up) May be stamped (8 Digit) near plate, similar to CASE.



VOLVO

Models

ZL302	L35B, G	L110F	L20F	L90G	L350F	L90H	L350F
ZL402	L40B	L120G, F	L30G	L110G, H	L30G	L110H	
ZL502	L45F	L150G	L35G	L120G, H	L35G	L120H	
L20F	L50F	L180F, G	L45G	L150H	L45H	L150H	
L25F	L60F	L220G	L50G	L180H	L50H	L180H	
L30B, G	L70F	L250G	L60G	L220H	L60H	L220H	
L32	L90F	L350F	L70G	L250G, H	L70H	L250H	

Serial Number Sample

12 Digit – example L35BD182755

17 Digit – example VCEOL35BD00027888

2017 – 17 Digit – example VCEL50HOT04320137

VIN plate location: VIN plate is located on either the left or right front lift arm support directly in front of the drivers cab. The full VIN may also be stamped near the VIN plate.

The VIN plates are held on with either drive nails, pop rivets or on 17 Digit models with 2 sided tape

ACKNOWLEDGEMENTS

The Ontario Sewer and Watermain Construction Association thanks the following people for the commitment, time and effort devoted to its anti-theft initiatives and the development of this guidebook.

Retired O.P.P. Detective Constable George Kleinsteiber
Auto Theft Section, Criminal Investigation Bureau

Ontario Provincial Police

Board of Directors, OSWCA

Ritchie Brothers Auctioneers

Toromont Caterpillar

Nortrax John Deere

Strongco Volvo

Green Tractors Nobleton

Wajax Equipment

Should you need more information on any equipment in this booklet, or other possible ways of identifying any other type of equipment, contact the writer by email at kleinsge@rogers.com.

REWARD

for information leading to arrests made in
connection with stolen construction equipment
or materials or information leading to its recovery

1-800-222-TIPS

EARN A CASH REWARD – CONFIDENTIALITY ASSURED



www.stolenheavyequipment.com

The contents of this guide book may be reproduced only with the written permission of the Ontario Sewer and Watermain Construction Association. Credit to the OSWCA must be included and clearly visible.