



flotex[®] BY STARCK[®]
vortex | artist | twilight

creating better environments

forbo
FLOORING SYSTEMS



flotex[®] BY STARCK[®]

Forbo Flooring Systems collaborated with visionary creator Philippe Starck in designing a highly innovative collection of floor covering systems: FLOTEX BY STARCK.

Using a high definition digital printing technique with the dense fibre surface of Flotex flocked flooring, Starck's collection features unique patterns. By playing on scale and transition, each of the 3 systems challenges tradition and creates a new language in the perception of interior spaces and floor covering design.

The many colour options and different combinations of the 3 systems make FLOTEX BY STARCK highly adaptable to every location and project.

**A NEW LANGUAGE
IN THE PERCEPTION
OF INTERIOR
SPACES**

The pattern of each full design system stretches 10 metres in width, made up of 4 different components; a central design, a left and a right transitional design and a semi-plain texture design that features a variety of accent colours. Each component spans 2 metres in width. With the design system it is possible to play with different combinations.

**PLAY AND CREATE
WITH DIFFERENT
COMBINATIONS**

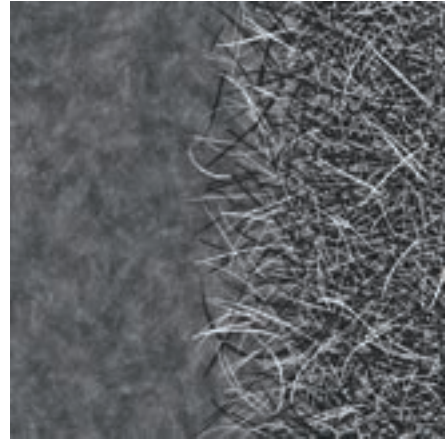


THE 3 SYSTEMS

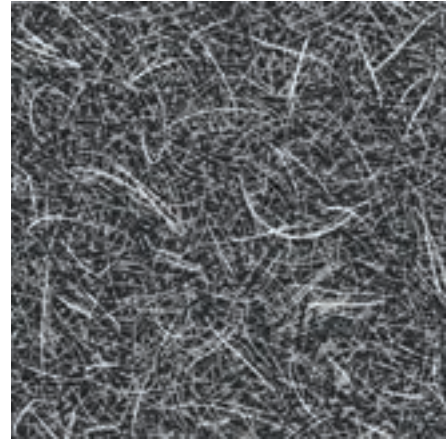
Philippe Starck created a collection of 3 systems, named vortex, artist, twilight. Each of them comes in 4 separate components that can be freely arranged to create patterns for your project that adapt to your needs and preferences.



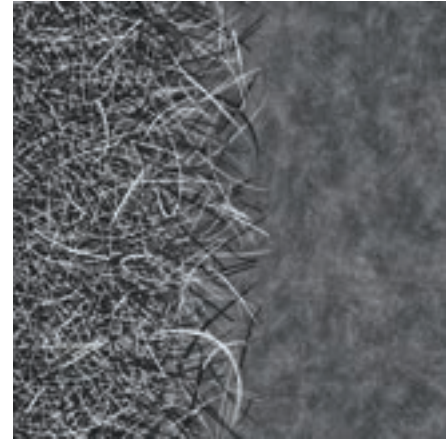
A1 | vortex



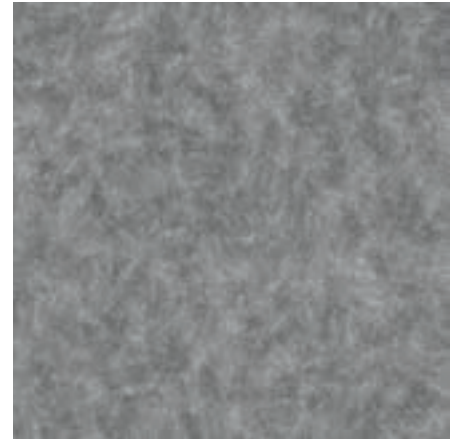
A2 | vortex



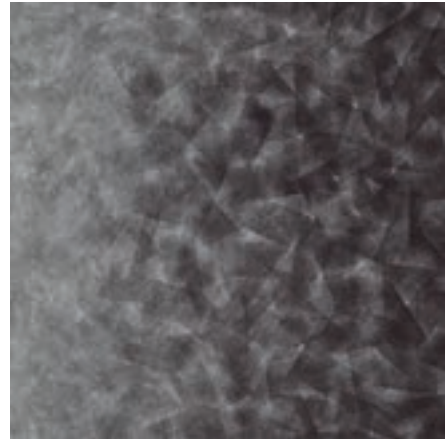
A3 | vortex



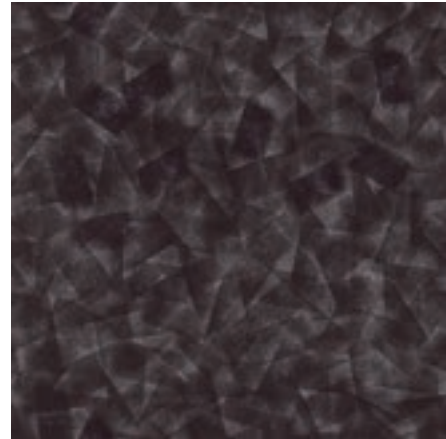
A4 | vortex



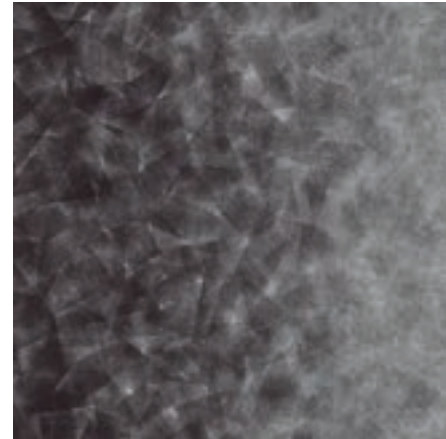
B1 | artist



B2 | artist



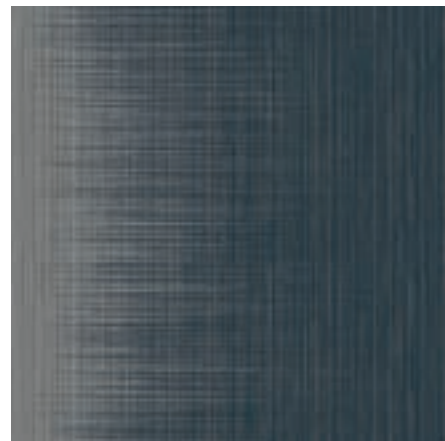
B3 | artist



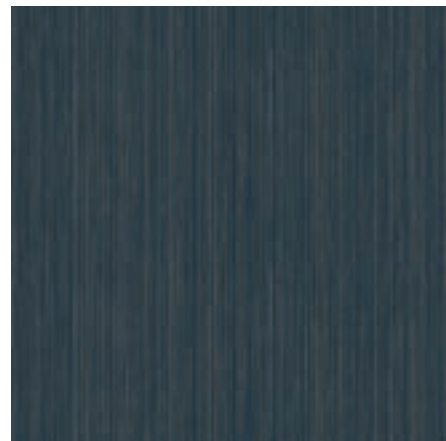
B4 | artist



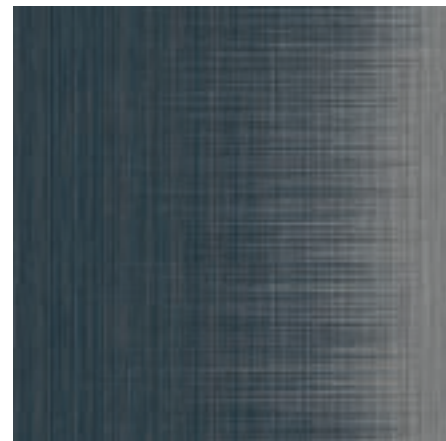
C1 | twilight



C2 | twilight



C3 | twilight



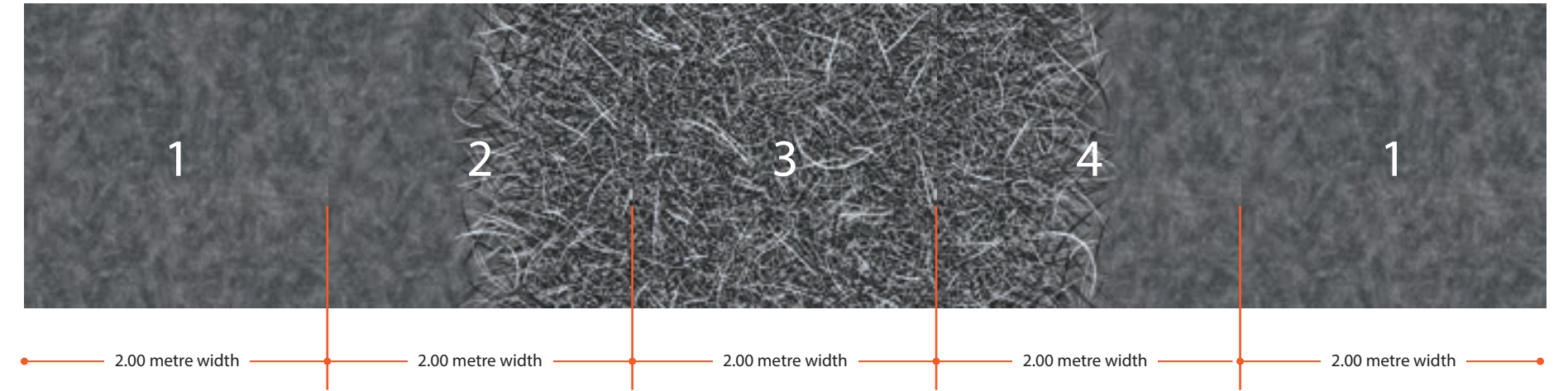
C4 | twilight

COMBINATION AND INSPIRATION

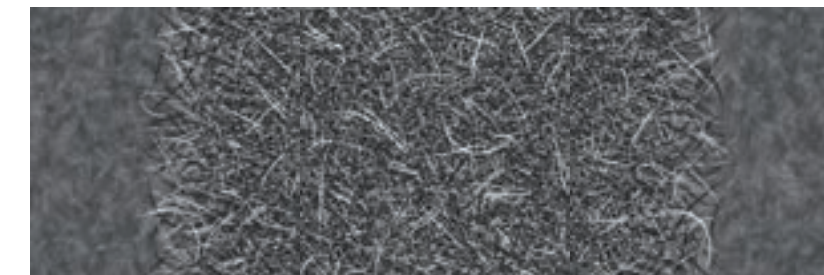
The flexibility of the systems makes combination possibilities almost endless. Some options are illustrated below.

Inspiration with 5 components (10 metres width):

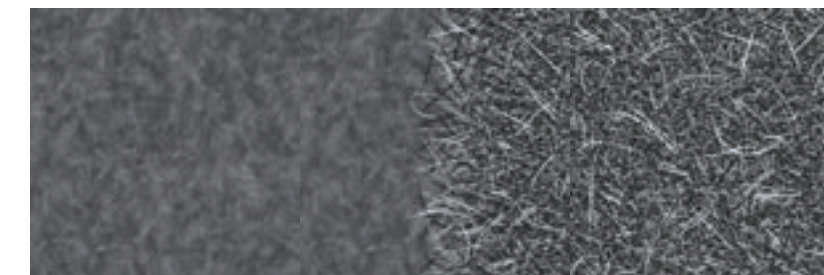
The full pattern of the design system stretches 10 metres in width if you arrange the below 4 components - repeating component 1 - in the following order: starting with the semi-plain texture design, followed by the left transitional design, the central design, then the right transitional design, and finishing by semi-plain texture design.



Inspiration with 3 components (6 metres width):



= 2 + 3 + 4

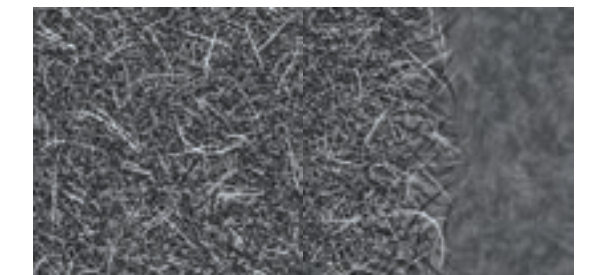


= 1 + 2 + 3



= 4 + 1 + 2

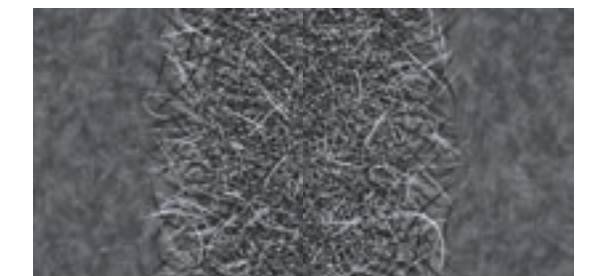
Inspiration with 2 components (4 metres width):



= 3 + 4



= 1 + 2



= 2 + 4



vortex

The beauty and power of nature combine to find order in disorder.

In this design each element has a role to play, as well as a purpose and a function. As combinations evolve, relationships form between chaos and calm to provide balance and choice.

« ORGANISED CHAOS OF THE WIND ON THE FIELD »

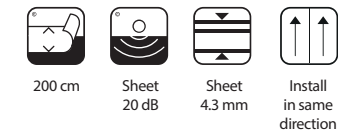
PHILIPPE STARCK

Vortex is a system of elements that are designed to transform the way we look at space. It provides a flexible solution to enable planning across large and small areas with patterns that freely mix and interchange, allowing a contrast between large scale design and semi-plain texture.

The Vortex design is available in 6 distinctive highlight colourways.

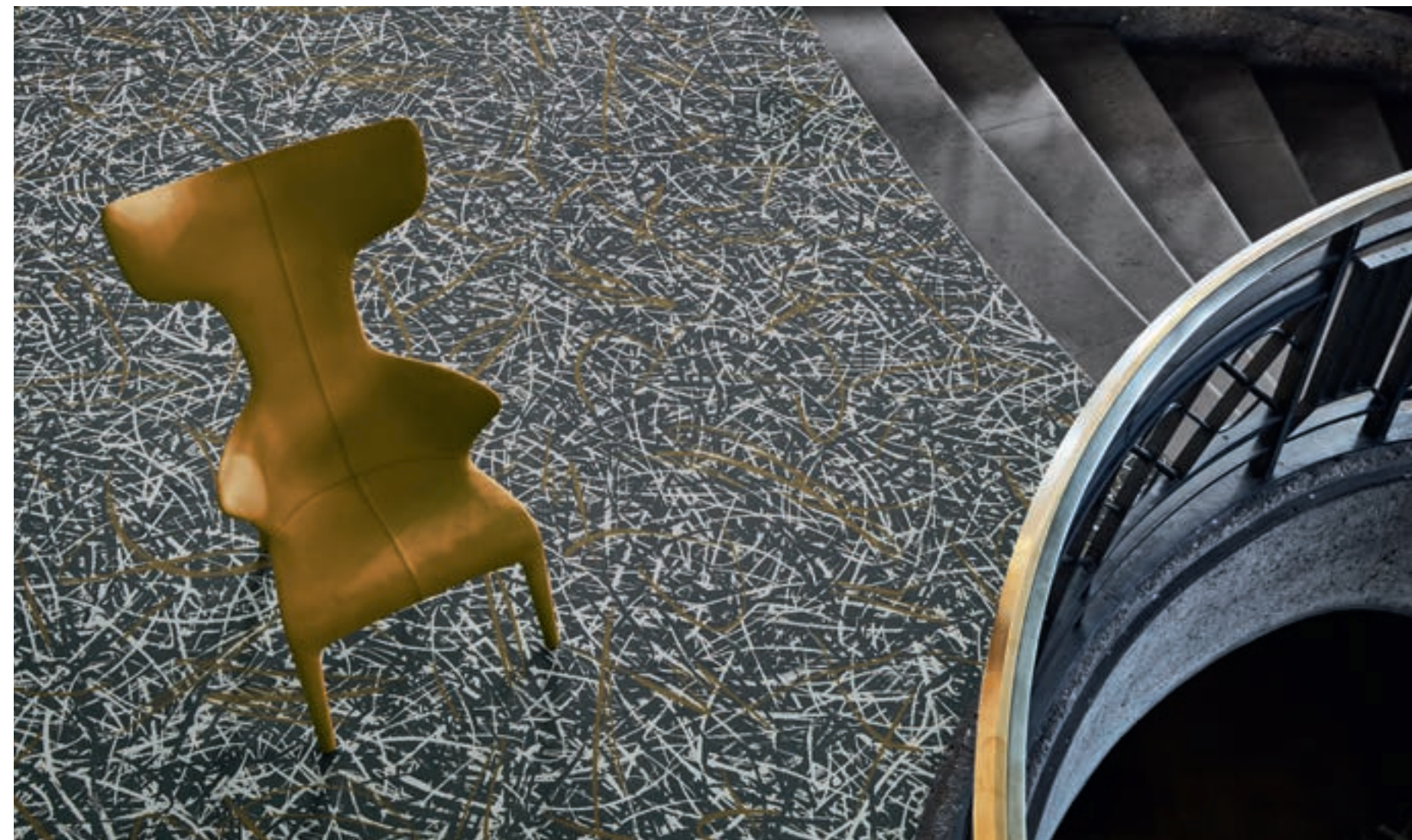
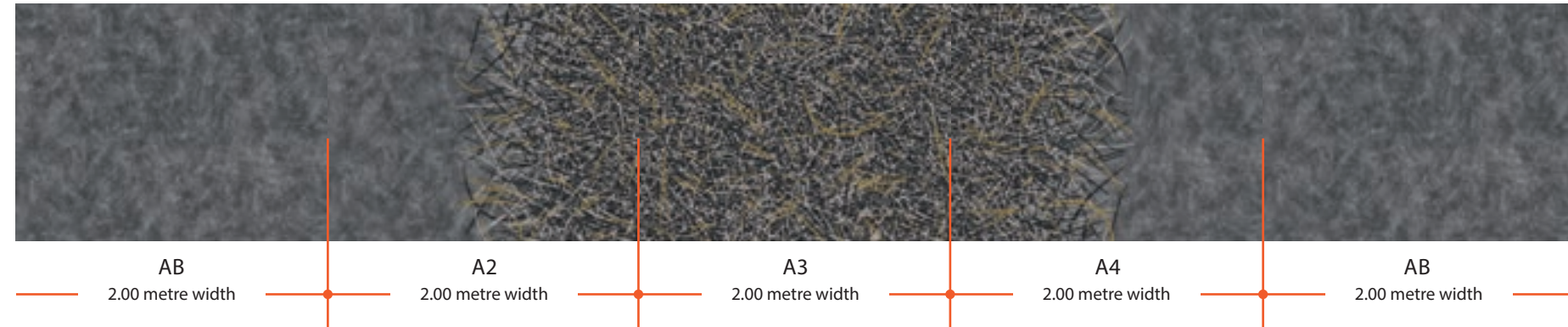






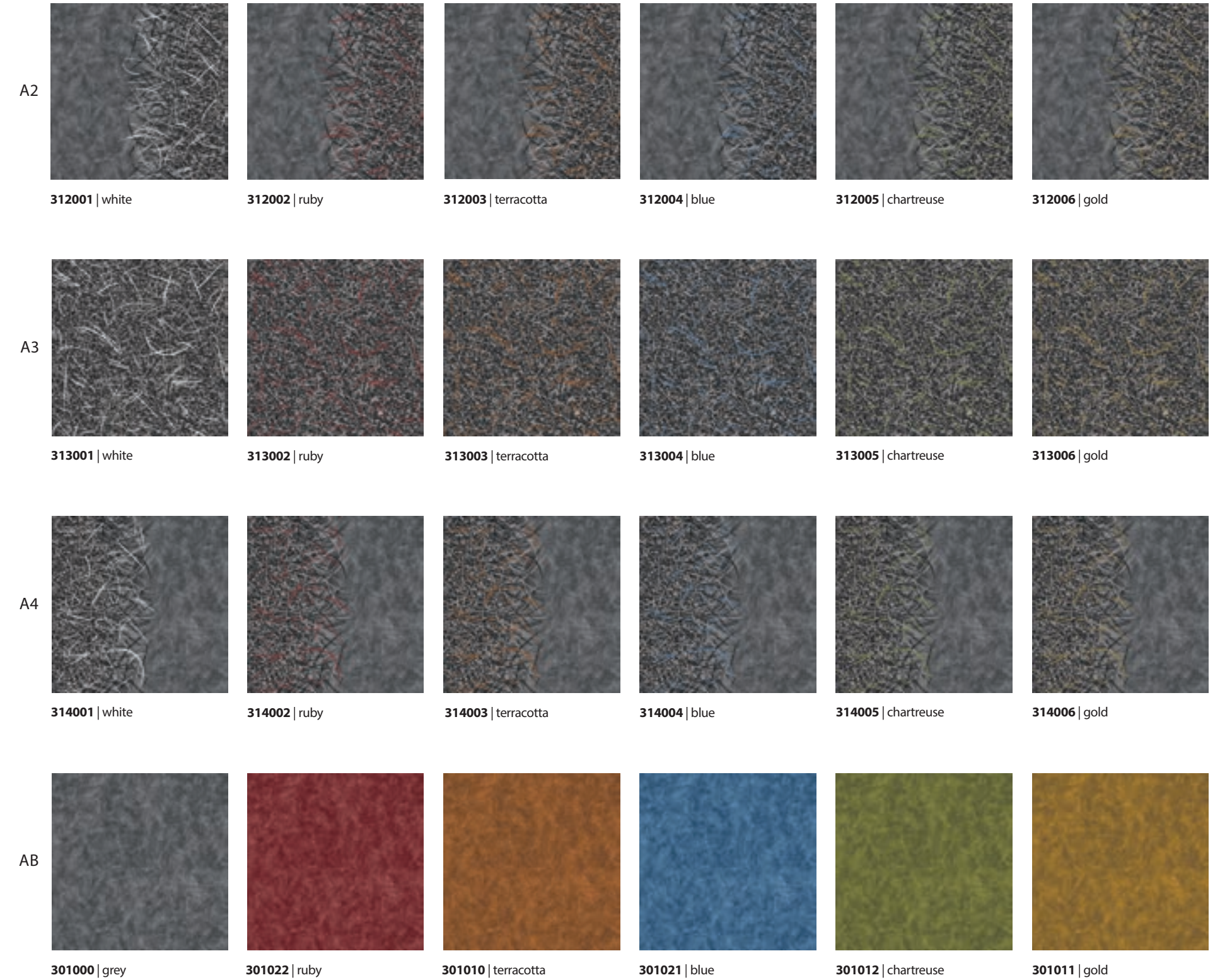
REPEAT 200 X 200 CM
 RAPPORT 200 X 200 CM
 DESSIN 200 X 200 CM

vortex



gold

vortex





artist

**In an age of machines, we seek purity, integrity and honesty.
The man made design that enables us to differentiate.**

The urge to create defines us and our ability to imagine gives us meaning and belonging. In this way, nothing can replace the lines that are drawn and the marks that are made by the artist's hand.

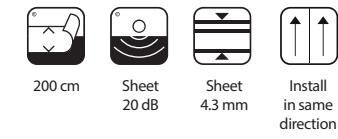
**« NOTHING REPLACES
THE PAINTER'S HAND »**

PHILIPPE STARCK

Artist is a concept based on the transition of two textures that can be used either individually or together with one colour fading into another. The different parts provide a way of designing and planning space in a subtle but visually engaging way, creating a flow of colour that allows areas to be differentiated whilst maintaining a distinctive look and feel in a building.

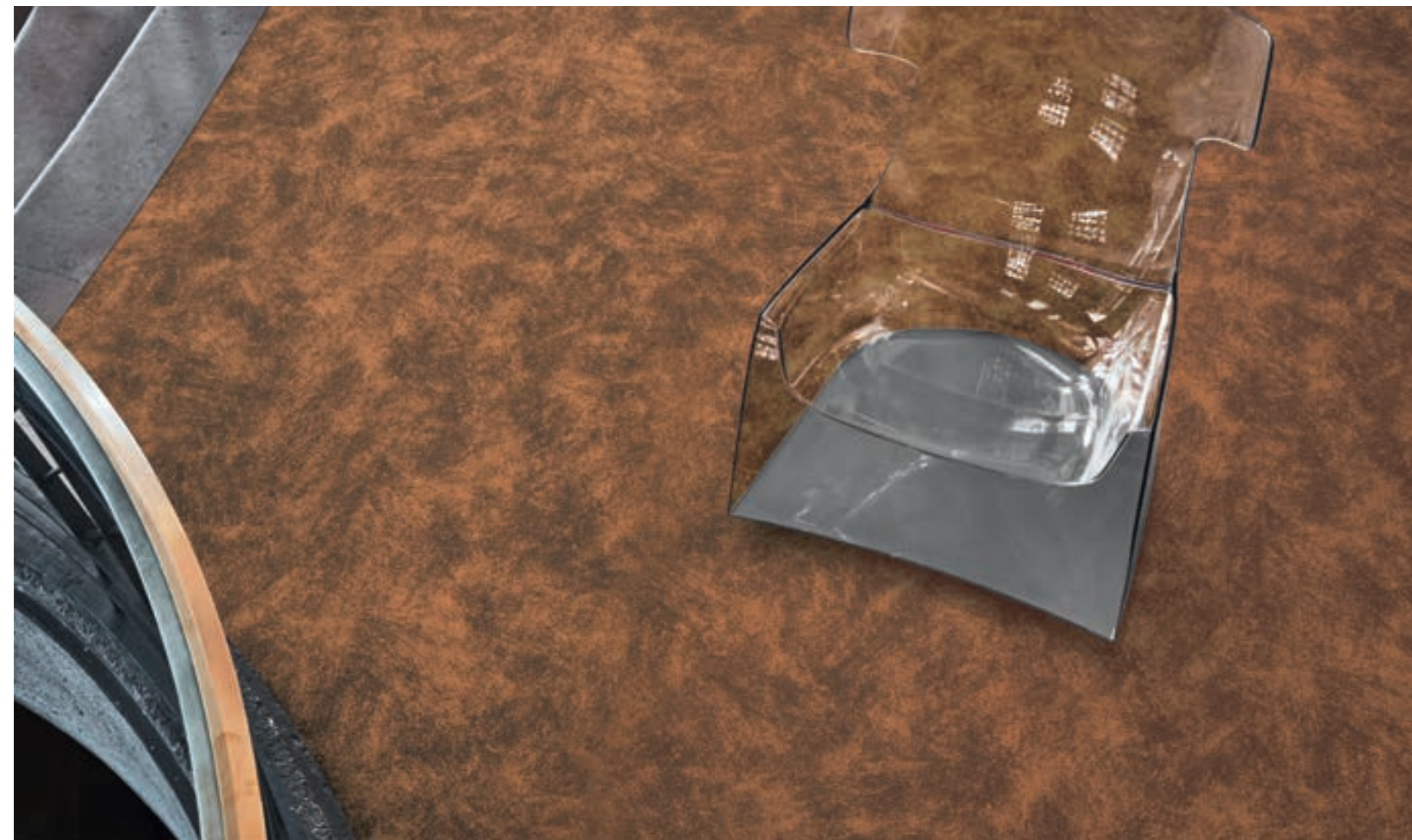
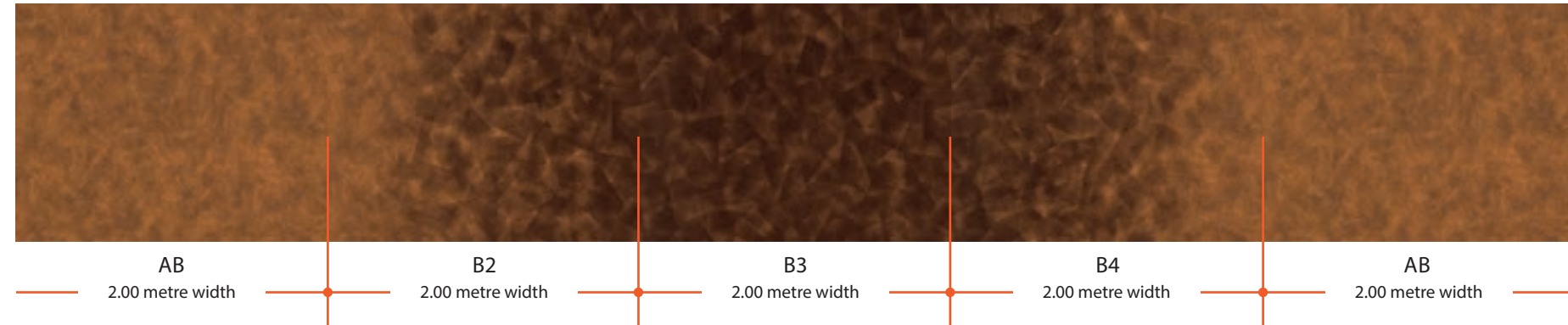
The Artist design is available in 6 distinctive colourways.





Repeat 200 x 200 cm
 Rapport 200 x 200 cm
 Dessin 200 x 200 cm

artist



terracotta

artist

B2						
	322007 ultramarine / turquoise	322009 umber / taupe	322011 olive / gold	322008 anthracite / silver	322010 umber / terracotta	322012 emerald / chartreuse
B3						
	323007 ultramarine / turquoise	323009 umber / taupe	323011 olive / gold	323008 anthracite / silver	323010 umber / terracotta	323012 emerald / chartreuse
B4						
	324007 ultramarine / turquoise	324009 umber / taupe	324011 olive / gold	324008 anthracite / silver	324010 umber / terracotta	324012 emerald / chartreuse
AB						
	301007 turquoise	301009 taupe	301011 gold	301008 silver	301010 terracotta	301012 chartreuse



twilight

The eternal fight between night and day sees the opposites blend and attract. The two elements edge slowly towards each other.

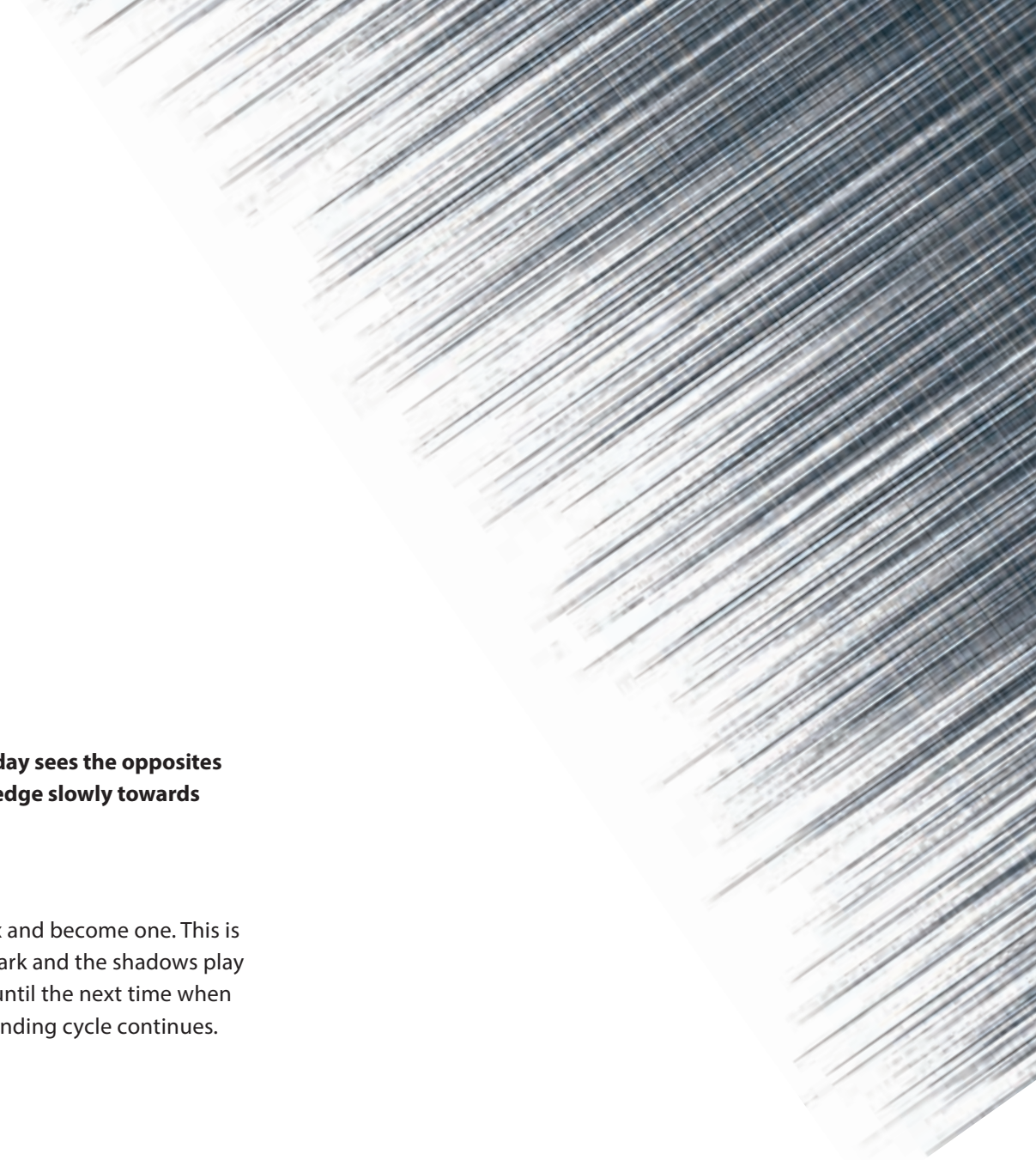
As they meet they combine, blend, mix and become one. This is the magical space where light meets dark and the shadows play before they are forced apart; but only until the next time when dark meets light again and the never-ending cycle continues.

« ETERNAL FIGHT OF NIGHT AND DAY »

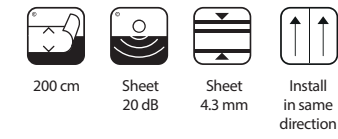
PHILIPPE STARCK

Twilight is a play on lights, shadows and colours. A design with two strong powerful and complementary sides; one jewel like, bright and light and the other as a shadow of deep, dark, rich shades. They come together in a transition element that creates energy and impact making a bold statement that can both divide and link space simultaneously. The different parts allow a mix and match flexibility across any size of installation.

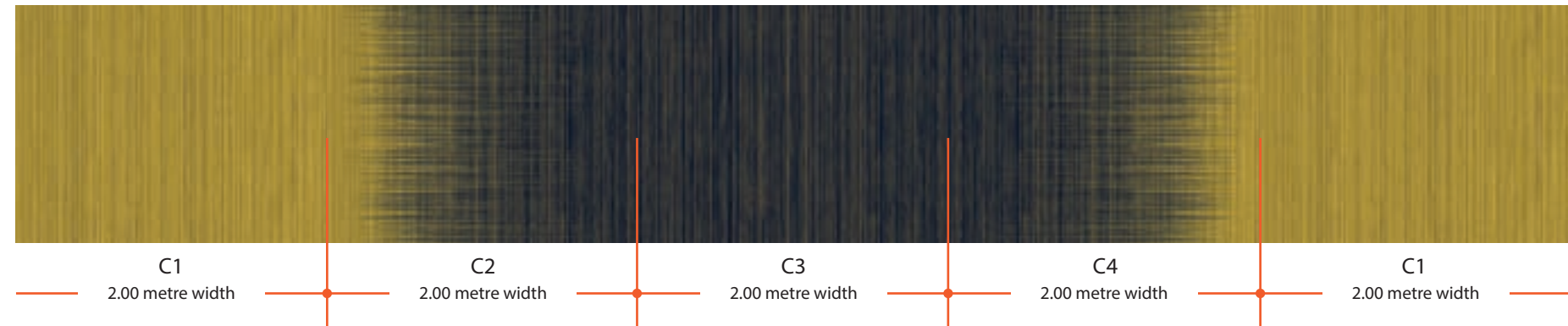
The Twilight design is available in 8 striking colourways.







twilight



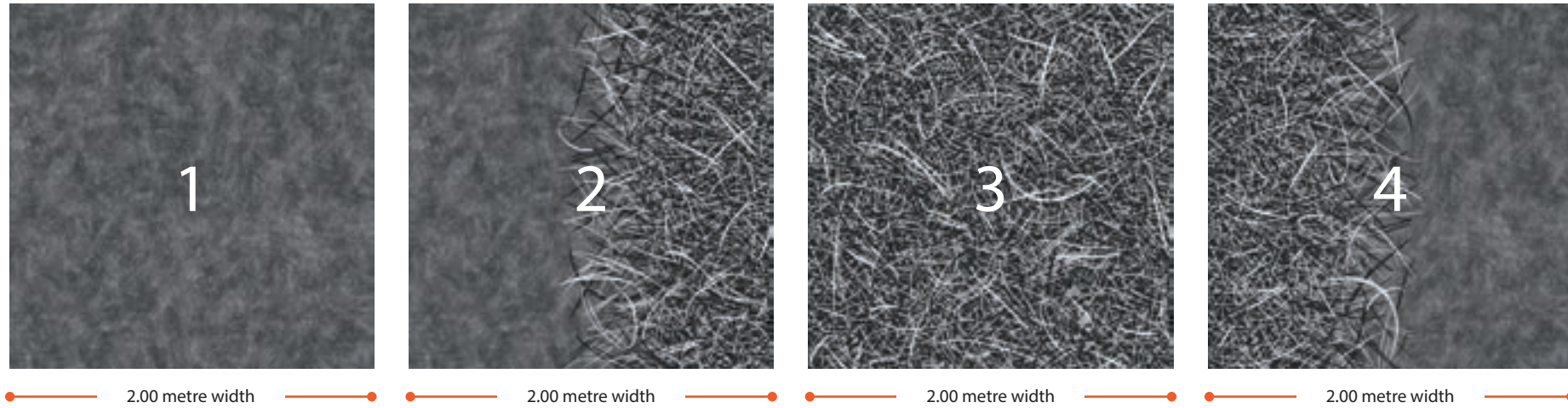
antique / amber

twilight

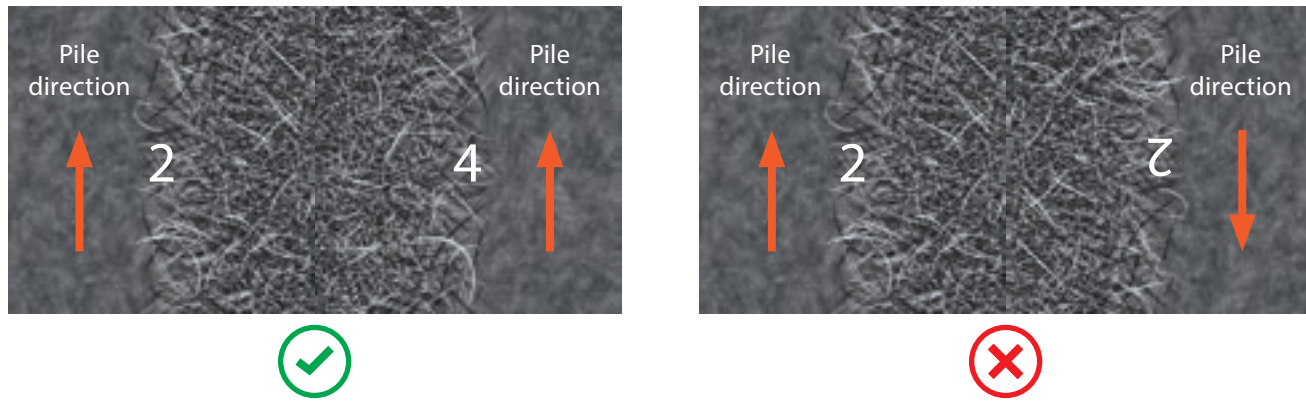
C2								
	332013 pewter / steel	332019 umber / taupe	332015 umber / spice	332020 burgundy / ruby	332017 sapphire / titan blue	332014 sapphire / teal	332018 emerald / chartreuse	332016 antique / amber
C3								
	333013 pewter	333019 umber	333015 umber	333020 burgundy	333017 sapphire	333014 sapphire	333018 emerald	333016 antique
C4								
	334013 pewter / steel	334019 umber / taupe	334015 umber spice	334020 burgundy / ruby	334017 sapphire / titan blue	334014 sapphire / teal	334018 emerald / chartreuse	334016 antique / amber
C1								
	331013 steel	331019 taupe	331015 spice	331020 ruby	331017 titan blue	331014 teal	331018 chartreuse	331016 amber

HOW TO ORDER

flotex[®] BY STARCK[®]



- For installations where more than one element of a design is to be fitted together in the same area, all items need to be ordered at the same time to ensure full colour matching across all designs.
- Please note that Flotex has a pile direction so components cannot be rotated and laid in the opposite direction as this will cause a marked difference in appearance.
- A2 and A4 references are different, please do not rotate these items. One of each must be ordered if both a left and a right transition component are required in the floor plan.



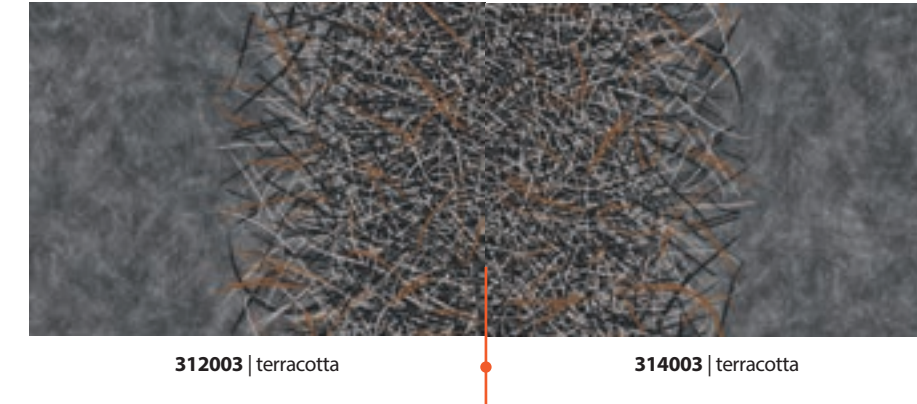
- Because of the freedom in the designs it is important to indicate, when ordering, which parts of the design you want to combine.
- For combined installations of a system in one room, all items need to be ordered at once to ensure full colour matching across all designs.

Pattern repeats

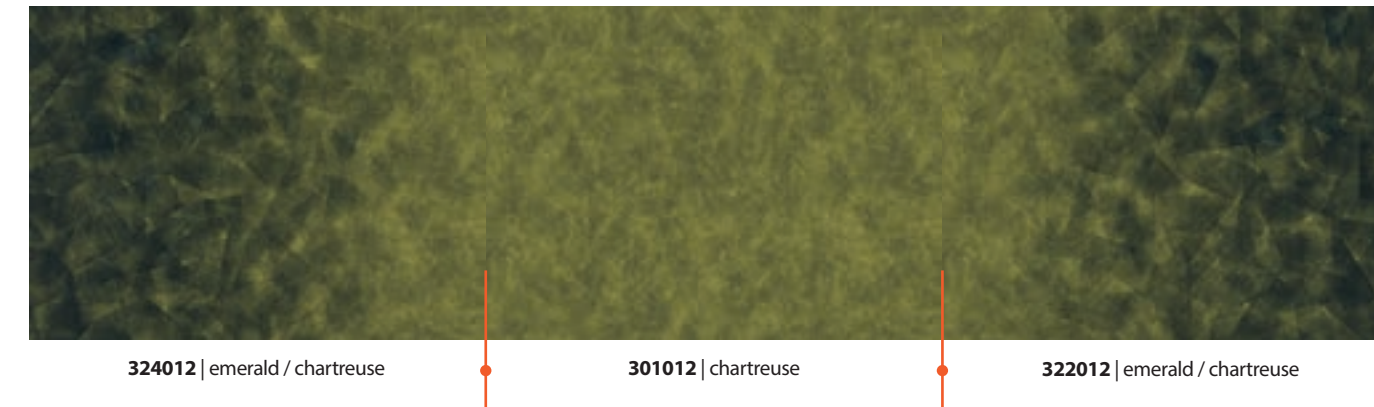
Design	Width	Length
Vortex	200 cm	200 cm
Artist	200 cm	200 cm
Twilight	200 cm	None

COMBINATION EXAMPLES

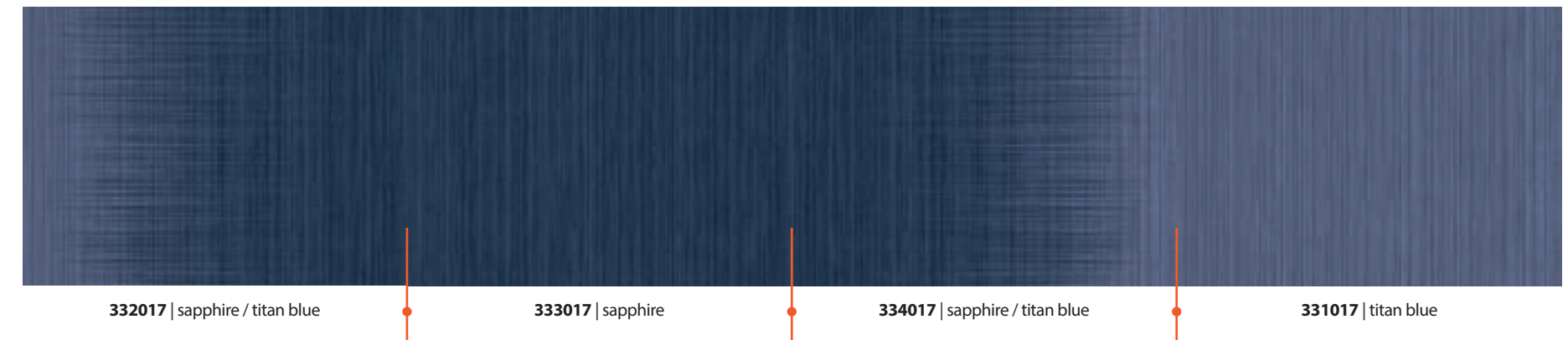
vortex



artist



twilight



Please order all items at the same time and confirm the required laying pattern when placing your order.

FLOTEX, THE HIGH TECH TEXTILE FLOORING

Flotex is a high tech textile that combines the warmth, acoustic properties and underfoot comfort of a textile with the durability and cleanability of a resilient floor covering.

DURABLE & COMFORTABLE

- Densely packed fibres (over 70 million per m²) provide a warm and comfortable surface
- Wide range of designs provide a floor covering that is suitable to any environment or desired atmosphere
- Excellent sound absorption (class A, =20dB impact sound reduction)

HYGIENIC & WASHABLE

- The nylon 6.6 fibres are extremely durable so intense cleaning can be done
- Thanks to its densely packed pile surface, Flotex captures fine dust and allergens that are easily released upon regular vacuuming, which is why it has been awarded the prestigious Allergy UK Seal of Approval™
- Flotex is a truly washable textile flooring that has great appearance retention and cleans up like new every time

SAFE & SOUND

- Flotex sheet offers an impact sound reduction of 20dB
- Its unique & durable construction means that Flotex will not fray or tear, preventing any slip or trip hazards



Flotex ensures consistent protection against bacteria without degradation through cleaning or vacuuming. It also suppresses the growth of dust mite populations. Therefore Flotex has a positive impact on the lives of allergy sufferers even more as daily vacuuming cleans away twice as many allergens compared to conventional carpets. That is why Flotex carries the British Allergy Foundation Seal of Approval™.



flotex® BY STARCK®

Technical specifications

FLOTEX BY STARCK meets the requirements of EN 1307

FLOTEX BY STARCK		
	Total thickness	ISO 1765 4.3 mm
	Commercial use	EN-ISO 10874 Class 33 heavy
	Roll width	2.0 m
	Roll length	30 m
	Total weight	ISO 8543 1.8 kg/m ²
	Dimension stability	ISO 2551 < 0.2%
	Abrasion resistance	EN 1307 annex F > 1000 cycles
	Castor chair continuous use	EN 985 Test A r ≥ 2.4 continuous use
	Light fastness	EN-ISO 105-B02 ≥ 6
	Slip resistance	UK SRG pendulum Dry - very low slip risk Wet - low slip risk
	Acoustic	EN-ISO 717-2 ISO 354 Impact sound ΔLw = 20 dB Sound absorption = 0.10
	Water impermeability	EN 1307 annex G Pass
	Creating better environments	
	Renewable electricity	Flotex is manufactured using 100% electricity made from renewable sources
	Recycled content	Flotex sheet contains up to 20% recycled content by weight
	Indoor Air Emissions: TVOC at 28 days	EN 16516 < 0.005 mg/m ³
	LCA	LCA is the foundation for securing the lowest environmental impact

Flotex meets the requirements of EN 14041

	Product code	EN 14041 1200101_DoP_512
	Reaction to fire	EN 13501-1 B _s -s1, L, NCS
	Slip resistance	EN 13893 μ ≥ 0,30
	Thermal resistance	ISO 8302 0.048 m ² K/W
	Body voltage	ISO 6356 < 2kV

All Forbo Flooring Systems' sales organisations worldwide have a certified Quality Management System in accordance with ISO 9001. All Forbo Flooring Systems' manufacturing operations have a certified Environmental Management System in accordance with ISO 14001. The Life Cycle Assessment (LCA) of Forbo Flooring Systems' products is documented in individual Environmental Product Declarations (EPD's) which can be found on all of our websites.

© Forbo / Starck Network / Sophie Delaporte / Palais Léna

creating better environments

flotex[®] BY STARCK[®]

Find us on



creating better environments

Baltic States

Forbo Flooring
K. Ulmana gatve 5
Riga, LV-1004, Latvia
Tel.: +371 670 66 116
E-mail: info.lv@forbo.com
www.forbo-flooring.lv
www.forbo-flooring.ee
www.forbo-flooring.lt

Other countries

Forbo Flooring B.V.
P.O. Box 13
1560 AA Krommenie
The Netherlands
Tel.: +31 75 647 74 77
Fax: +31 75 647 77 01
E-mail: contact@forbo.com
www.forbo-flooring.com



FLOORING SYSTEMS