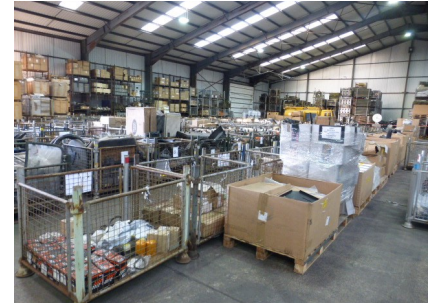


By order of the UK Ministry of Defence
MASSIVE SALE BY TENDER
Monday 1st December 2014

Viewing: Wednesday 26th Thursday 27th Friday 28th & Saturday 29th November 8:30 to 4:30

Approx 800 + LOTS to Include



Miscellaneous Equipment to include Tools, Generators, Water Pumps, Heaters, Mowers, Chain Saws, Winches, Refuellers, 500 gall Tanks, Pallet Trucks, Lube Units, Demountable Workshops and Offices, Compressors, Conveyors, Watches, Compasses, Access Platforms, Wave Trailers, Etc. Etc. Etc.

Vehicle Spares to include Land Rover, Leyland Daf, Bedford, Renault, Dodge, Ford, Pinzgauer, JCB, Cat, FV Spares, Etc. Etc.

Engines, Transmissions, Axles Etc. Etc.

Approx 1500 New and Used Tyres to include Land Rover 4 x 4, HGV, LCV, Earthmover, Industrial, Aviation Etc. Michelin, Goodyear, Bridgestone, Dunlop Etc. Etc

Clansman Radio and Electronic Equipment to include Transmitter Receivers, Telephones, Exchanges, Vehicle Fitting Kits, Test Equipment, Copper Wire, Antennas, Masts, Etc. Etc.

Catalogue, pictures, terms and conditions available from our website.

www.mod-sales.com

Witham (Specialist Vehicles) Ltd

The UK Sales and Marketing Agent for all Ministry of Defence Vehicles and Plant

Address : Honeypot Lane, Colsterworth, Grantham, Lincs. NG33 5LY

Telephone: 01476 861361 Email : sales@mod-sales.com

Lot No	Description
1	STILL R70/80 AP forklift, Mercedes diesel engine, c/w triple mast, roller forks, fork positioners, side shift, MEI load indicator, etc. 2,258 hrs. Ex-RAF.Reg No : JN 19AA, Year 1996
2	Hyster H 4.0 FT 5 forklift diesel triple mast, side shift, finger tip controls, etc. Very low hrs. Year 2007
3	Hyster H 3.5 XM forklift GLP duplex mast, side shift. Low hrs. Year 2003
4	Hyster H 3.5 XM forklift GLP duplex mast, side shift. Low hrs. Year 2003
5	TB DAVIES mobile hydraulic access platform c/w jacks, etc. Reg No : BD 192/04
6	Grillo FD 1500 H wheel drive all terrain mower, c/w collector hydraulic, front desk, etc. 1,300 hrs. Reg No : EJ08 EZM
7	Demountable electronic/radio repair workshop c/w electrics, benches, screened enclosure, etc. Ex-reserve. Reg No : 100230
8	Demountable electronic/radio repair workshop c/w electrics, benches, screened enclosure, etc. Ex-reserve. Reg No : 199257
9	Demountable store/parts cabin c/w racking, electrics, double rear doors, etc.
10	Demountable MT workshop c/w Lathe, Benches, Electrics Etc.
11	Tecalamet lube trailer c/w diesel compressor, oil pumps, tanks, HD grease gun, etc. Low hrs. Ex-reserve. Reg No : 30 TM40
12	Tecalamet lube trailer c/w diesel compressor, oil pumps, tanks, HD grease gun, etc. Low hrs. Ex-reserve. Reg No : 25 TM17
13	Cooper mobile speaker array c/w wave trailer, speakers, solar panels, mast, etc. Unused. Ex-reserve. Year 2010
14	Cooper mobile speaker array c/w wave trailer, speakers, solar panels, mast, etc. Unused. Ex-reserve. Year 2010
15	Cooper mobile speaker array c/w wave trailer, speakers, solar panels, mast, etc. Unused. Ex-reserve. Year 2010
16	Bar mine layer. Ex-reserve. Unused, direct from storage.
17	Bar mine layer. Ex-reserve. Unused, direct from storage.
18	Bar mine layer. Ex-reserve. Unused, direct from storage.
19	Bar mine layer. Ex-reserve. Unused, direct from storage.
20	Bar mine layer. Ex-reserve. Unused, direct from storage.
21	Bar mine layer. Ex-reserve. Unused, direct from storage.
22	Bar mine layer. Ex-reserve. Unused, direct from storage.
23	Bar mine layer. Ex-reserve. Unused, direct from storage.
24	Bar mine layer. Ex-reserve. Unused, direct from storage.
25	Bar mine layer. Ex-reserve. Unused, direct from storage.
26	Quinetic Sicard 14 ft sweep brush
27	Dispensing pack fuel pumping and filtration unit, Lister diesel engine c/w hose reels, etc. Ex-reserve.
28	Dispensing pack fuel pumping and filtration unit, Lister diesel engine c/w hose reels, etc. Ex-reserve.
29	Dispensing pack fuel pumping and filtration unit, Lister diesel engine c/w hose reels, etc. Ex-reserve.
30	Dispensing pack fuel pumping and filtration unit, Lister diesel engine c/w hose reels, etc. Ex-reserve.
31	Dispensing pack fuel pumping and filtration unit, Lister diesel engine c/w hose reels, etc. Ex-reserve.
32	Dispensing pack fuel pumping and filtration unit, Lister diesel engine c/w hose reels, etc. Ex-reserve.

33	500 gall aluminium fuel storage tank
34	500 gall aluminium fuel storage tank
35	14 seat troop carrier c/w seal belts, head restraints, etc.
36	Fenamec 10 ft roller conveyor x8
37	Fenamec 10 ft roller conveyor x8
38	Fenamec 10 ft roller conveyor x8
39	Aluminium extending ladder
40	Aluminium extending ladder
41	Aluminium extending ladder
42	Dytecna radio installation kit c/w PSU, etc. Unused.
43	Lifting frames, strolleys, etc. 5x pallets.
44	Armoured door assembly, etc.
45	Recovery bars x16.
46	Gun/Recovery poles x12.
47	Cable trunking, etc. x360.
48	Copper cable.
49	Aluminium antenna assemblies and accessories.
50	Electronic equipment.
51	Land Rover seats, cargo nets, etc.
52	Oil fired water heaters x4.
53	Heavy lift cargo parachutes x2.
54	Heavy lift cargo parachutes x2.
55	Clarke 12 metre telescopic scam mast.
56	Clarke 12 metre telescopic scam mast.
57	Clarke 12 metre telescopic scam mast.
58	Leyland DAF 4x4 gearbox.
59	Allison 05J02 TID3 gearbox assembly. Unused.
60	Allison 05J02 TID3 gearbox assembly. Unused.
61	Kipor KDE 3500 T diesel generator. 240/110 volt.
62	Wharton Foden Recovery hydraulic winch.
63	Vickers demountable recovery winch.
64	Generator GUE, Perkins diesel.
65	Jaguar J60 CVRT engine complete fully recon.
66	Europower 240 volt generator c/w mains failure control panel, etc. Low hrs.
67	Lister Petter Stella-Meta 1500 g/hr water pumping set. New unused.
68	Air Log 5.6 KVA 240 volt AC 50 Hz diesel generator set.
69	Deutz 6 cyl diesel engine complete, fully recon. Unused.
70	Allison 05J02 TID3 gearbox assembly. Unused.
71	Kipor KDE 3500 T diesel generator. 240/110 volt.
72	Land Rover 2.5 N/A diesel engine complete, fully recon. Unused.
73	Land Rover 2.5 N/A diesel engine complete, fully recon. Unused.
74	Land Rover 2.5 N/A diesel engine complete, fully recon. Unused.
75	Air Log 5.6 KVA 240 volt AC 50 Hz diesel generator set.
76	Land Rover Defender gearbox, fully recon. Unused.
77	Land Rover Defender gearbox, fully recon. Unused.
78	Land Rover Defender gearbox, fully recon. Unused.
79	Land Rover Defender gearbox, fully recon. Unused.
80	Wharton hydraulic recovery winch.
81	Harrington 4 KW diesel generator. 240/110 V, 50 Hz.
82	Plessey 1.9 KVA gen set.

83	Plessey 1.9 KVA gen set.
84	Walton sheet metal shear.
85	Europower diesel 240 volt generator c/w mains failure panel. Low hrs.
86	Europower diesel 240 volt generator c/w mains failure panel. Low hrs.
87	Arron semi auto strapping machine.
88	Harrington 4 KW diesel generator. 240/110 V, 50 Hz.
89	Lister Petter Stella-Meta 1500 g/hr water pumping set. New unused.
90	Europower 240 volt diesel generator c/w mains failure panel. Low hrs.
91	Europower 240 volt diesel generator c/w mains failure panel. Low hrs.
92	Mexe jerry can washer. New unused.
93	Airchannel compressor.
94	Qualitair air conditioning unit.
95	Tange 20 ton hydraulic jack.
96	Tange 20 ton hydraulic jack.
97	Tange 20 ton hydraulic jack.
98	Tange 20 ton hydraulic jack.
99	Tange 20 ton hydraulic jack.
100	Tange 20 ton hydraulic jack.
101	Tange 20 ton hydraulic jack.
102	Tange 20 ton hydraulic jack.
103	Beissarth hydraulic transmission jack.
104	Beissarth hydraulic transmission jack.
105	Oregon chainsaw.
106	Godwin CD100M Trailer Mounted Diesel Water Pump C/W Perkin Diesel, Low Hours
107	SL
108	SL
109	Ruggedised AO Plotter/Printer New Unused
110	Rocal Easyline playing field marker.
111	Hydromist carpet cleaner.
112	Oil fired workshop heater.
113	Oil fired workshop heater.
114	Sterling Clarke water pump.
115	BT Rolatruck pallet truck.
116	Jungheinrich pallet truck.
117	Clansman rechargeable batteries x48.
118	RT 349 radio sets & kit x20.
119	PCBs.
120	25 watt TVRFs, PSVs, etc.
121	RT 320 radios x6.
122	Clansman rechargeable batteries x24.
123	Thales speaker units x32.
124	Clansman Land Rover fitting kits x4.
125	TREND model 615 teleprinters x3.
126	TREND model 615 teleprinters x3.
127	TREND model 615 teleprinters x7.
128	TREND model 615 teleprinters x12.
129	TREND attachment units x10.
130	TREND model 653 teleprinters x10.
131	Linesman cable dispenser unit x6.
132	Linesman cable reel units.

133	Intel battery chargers x6.
134	4 watt selector units x30.
135	Land Rover Clansman fitting frames x70 approx.
136	DCCUs, chargers, etc. x38.
137	RT 351 radios and amplifiers, etc. x42.
138	Land Rover wing boxes and TUAMs x23.
139	RT 351 radios and kits x7.
140	Clansman backpacks.
141	RT 351 radios x10.
142	Transmitter receiver units x5.
143	Test equipment, etc.
144	Antenna and cables.
145	Tornado pylon test kits.
146	D10 cable packs x18.
147	Clansman backpacks.
148	Linesman cable dispenser kits and cable.
149	Pye field telephones x14.
150	RT 351 radio sets x8.
151	RT 320 radios x6.
152	Telephone switchboards/exchanges x15.
153	Telephone switchboards/exchanges x17.
154	Radio transmitter unit x2.
155	Vehicle power units x20.
156	Radwin 2000 units, etc.
157	Land Rover fitting kits x4.
158	Racal RA 2000 field phones x20.
159	Racal RA 2000 field phones x15.
160	RT 350 radios x10.
161	BW disc unit. Unused.
162	Fitting kits x8.
163	Penthouse lighting kits.
164	Dennis Javelin coach windscreen x6.
165	Alternators x17.
166	Leyland DAF start motors x25.
167	Land Rover Wolf starter motors x64.
168	Starter motors x18.
169	Land Rover starter motors x51.
170	Land Rover starter motors x62.
171	Leyland DAF alternators x15.
172	Leyland DAF starter motors x30.
173	Foden starter motors x20.
174	Land Rover starter motors x62.
175	Land Rover starter motors x68.
176	DAF/Foden starter motors x25.
177	Land Rover alternators x68.
178	DAF 4x4 alternators x31.
179	Cummins starters x25.
180	AFV periscopes x36.
181	Camo nets, woodland.
182	DAF alternators x20.

183	Land Rover steering boxes x19.
184	AFV Chieftain Metadyne control box x2.
185	Camo nets and kits.
186	Bearings, etc.
187	Bedford brake shoe sets x10.
188	Marelli starter motors, new x29.
189	Land Rover door glass x15.
190	Lucas beacons, etc.
191	DAF spares, etc.
192	Aluminium steps, etc.
193	Land Rover steering boxes, recon x6.
194	Land Rover steering boxes, recon x11.
195	Land Rover Wolf spares.
196	Hydraulic pumps, etc.
197	Bedford spares.
198	Land Rover steering boxes x16.
199	Bedford clutches x50.
200	Land Rover steering boxes x15.
201	Lucas 24 volt alternators x16.
202	Land Rover tow bar kits x14.
203	DAF spares.
204	Lucas 24 volt alternators x16.
205	Land Rover radiators x12.
206	Land Rover clutches x50.
207	Air filters x7.
208	Tables x5.
209	Bedford battery covers x29.
210	SA brake shoes sets x24.
211	Land Rover clutches x224.
212	Bedford brake drums x10.
213	SA brake shoe sets x12.
214	SA brake shoes x30.
215	Bedford driver seats x14.
216	Battery clamps x136.
217	Bedford brake shoe sets x32.
218	Bedford brake shoe sets x30.
219	Bedford driver seats x15.
220	Battery clamps x140.
221	Bedford battery covers x35.
222	Bedford battery covers x30.
223	DAF passenger seats x14.
224	Bedford driver seats x12.
225	Bedford EW fuel filters x50.
226	Bedford EW fuel filters x50.
227	Bedford cooper air filters x32.
228	Bedford cooper air filters x28.
229	Bedford EW fuel filters x50.
230	Bedford EW fuel filters x50.
231	Bedford EW fuel filters x50.
232	Wagerbereich 20kg-250kg weigher.

233	Air conditioner kits.
234	Bedford alternators, recon x14.
235	Bearings, etc.
236	JCB spares.
237	Land Rover alternators. New unused x73.
238	Air line hoes x52.
239	Air line fittings, etc.
240	Starter motors x11.
241	JCB spares.
242	Bedford shock absorbers x90.
243	Land Rover steering boxes x11. Unused.
244	Pinzgauer starter motors x8.
245	Bedford flywheels x15.
246	Air horn kits, etc. x9.
247	Land Rover roof bars, etc.
248	Filters, etc.
249	Land Rover steering boxes x11. Unused.
250	Land Rover Wolf spares.
251	Land Rover Wolf rims x2.
252	Land Rover spares.
253	Land Rover steering boxes x11. Unused.
254	Bearings, etc.
255	Land Rover steering boxes x11. Unused.
256	Filters, etc.
257	Bedford/Land Rover spares.
258	Bedford spares.
259	Bedford spares.
260	Bedford spares.
261	Bedford spares.
262	Bedford spares.
263	Bedford spares.
264	Bedford spares.
265	Land Rover spares, seats, etc.
266	Bedford spares.
267	Bedford spares.
268	Land Rover body panels, etc.
269	Bedford spares.
270	Bedford spares.
271	Bedford spares.
272	Bedford/Land Rover spares.
273	Land Rover bonnets, grills, etc.
274	FIAM 12 volt 150 A/H new batteries x12.
275	Batteries x9.
276	Bedford/HGV mirror arms x88.
277	Bedford special tools.
278	Bedford shock absorbers x90.
279	Air con kit. New.
280	Air con kit. New.
281	Air con kit. New.
282	Land Rover Series spares.

283	Land Rover Series spares.
284	Bedford water pumps, bearings, etc.
285	Bedford spares.
286	Land Rover Series spares, etc.
287	Land Rover Series spares, etc.
288	Bedford spares inc. pistons, etc.
289	Land Rover Series spares.
290	Bedford/Land Rover spares.
291	Land Rover Series spares, etc.
292	Bedford spares.
293	Lens, light units, etc.
294	Hydraulic pumps, etc.
295	Bedford spares.
296	Bedford radiators, etc.
297	Bedford clutches, etc.
298	Bedford/Land Rover spares.
299	Bedford/CAV spares.
300	Bedford spares.
301	Bedford spares.
302	Bedford canvas, etc.
303	Land Rover Series spares.
304	Bedford spares inc. prop shafts, etc.
305	Cyalume light sticks x1000, approx.
306	Prestolite starter motors x8.
307	Bedford/Land Rover spares.
308	Michelin 1400X 20 tubes x19.
309	Bedford seat covers x135.
310	Bedford fuel pumps, etc.
311	Bedford seat covers x130.
312	Bedford air filters x22.
313	Leyland DAF spares.
314	Bedford special tool kit. Complete.
315	Bedford spares.
316	Lucas spares, etc.
317	Leyland DAF window panels.
318	Supacat swivel pin housing x60.
319	Leyland DAF brackets x110.
320	Leyland DAF door windows x26.
321	Lucas spares, tools, etc.
322	Lubrication pumps, filters, etc.
323	Tools, jacks, etc.
324	Hi Flex hose x10.
325	Bedford special tool kit. Complete.
326	Hydraulic 10 tonne jacks x10.
327	Bedford TM starter motors x23. New.
328	Air con kit. New.
329	Air con kit. New.
330	Duraline layflat hose x4.
331	JCB spares, tools, etc.
332	Perkins oil filters, etc. x102.

333	Tyre valve extensions, etc.
334	Hydraulic 10 tonne jacks x9.
335	Bedford special tool kit. Complete.
336	Land Rover wheel cylinders, etc.
337	Bedford TM front cab panels.
338	Leyland DAF spares.
339	Bedford TM starter motors x16. New.
340	DAF/Pinzgauer spares, etc.
341	CAV/JCB starter motors x15.
342	Leyland DAF prop shafts, etc.
343	Hydraulic valves, rams, etc.
344	Rousch spares, etc.
345	Rousch spares, etc.
346	Bedford master cylinder, etc.
347	Cab mountings x76.
348	Bedford MJ air filters x29.
349	Lamps, lens retainers, etc.
350	JCB/Lucas spares.
351	Air brake assemblies x9.
352	Bedford MJ air filters x21.
353	FV 432 spares, etc.
354	Land Rover/Wolf wing panels x3.
355	Land Rover/Wolf silencers x10.
356	CVRT seat frames x10.
357	Land Rover/Wolf spares.
358	CVT spares inc. fuel pump, etc.
359	Land Rover/Wolf spares.
360	MAN/Bedford spares.
361	Land Rover/Wolf spares.
362	Bedford spares.
363	Tyre repair kits, etc.
364	Tyre repair kits, etc.
365	Bedford special tool kit complete.
366	Land Rover spares.
367	Secure modem kits.
368	Speed limiter kits x8.
369	Bedford instrument panels x30.
370	Hydraulic hose, etc.
371	10 tonne hydraulic jacks x10.
372	Bedford air filters x31.
373	Land Rover rear seat base x25.
374	Land Rover windscreen pull assembly x21.
375	Bedford Cooper air filters x31.
376	Air con kit. New.
377	Air con kit. New.
378	Bedford clutch assemblies, etc.
379	Duraline layflat hose x14.
380	Ford spares, etc.
381	Land Rover/Wolf spares.
382	Bedford/Land Rover spares.

383	Land Rover/Wolf spares.
384	SKF bearings x225.
385	Land Rover 65 A/H batteries x29.
386	Fleetguard air filters, etc. x23.
387	Land Rover/Wolf spares.
388	HP printers x5.
389	DAF/Land Rover spares.
390	10 tonne hydraulic jacks x10.
391	Vehicle worksheet doc cases x247.
392	Bedford J bolts & battery retainers x200.
393	Turbos, etc.
394	Starter motors, etc.
395	Land Rover wheel rims x10.
396	FV sprockets x8. New.
397	Mine marker kits.
398	Workshop oil drainer, tool box, etc.
399	Bedford spanners x16.
400	Brake pipe kits etc. x4.
401	Bedford/Land Rover spares.
402	MAN turbo chargers x12.
403	Bedford door steps x80.
404	Motorcycle spares, etc.
405	Air line fittings.
406	Land Rover canopies x10, etc.
407	Bedford special tool kit. Complete.
408	Hydraulic valves x20.
409	Cab lifting rams x20.
410	Air lines, wheel nut indicators, etc.
411	Tarpaulin sheets, etc.
412	Bedford special tool kit. Complete.
413	SA 80 etc. weapon mount kits x14.
414	Land Rover coolant tanks x75.
415	Land Rover/Wolf chequer plate wing tops x100 approx.
416	MAN headlamps, etc.
417	Trailer hinge bars x4.
418	Vehicle work ticket holders x150.
419	Light kits, tools, etc.
420	Master switch units x7.
421	Land Rover/Wolf water pumps x56.
422	Leyland DAF spares.
423	Brake chambers, etc.
424	Bedford special tools, etc.
425	Twist locks x20.
426	Bedford fan drives x41.
427	Land Rover armoured glass panels x16.
428	Land Rover steering boxes x22.
429	Land Rover rear seat bases x26.
430	Bedford turbo chargers, recon x21.
431	Bedford brake shoe sets x14.
432	Bedford brake shoe sets x45.

433	Bedford brake drums x15.
434	Land Rover canopies x6.
435	Land Rover steering boxes, recon x17.
436	Pinzgauer radiator x3.
437	Land Rover clutches x48.
438	Mirrors, lens, etc.
439	MAN/DAF spares.
440	Land Rover air intake blanking kit x1076.
441	Mercedes filters x57.
442	Land Rover/Wolf spares.
443	Bedford handbrake drums x18.
444	Bedford brake drums x10.
445	Land Rover seatbelt kits x72.
446	Universal joints, etc.
447	Bedford turbo chargers x20, recon.
448	Ford/Vauxhall/Scania spares, etc.
449	Filters, etc.
450	Land Rover Wolf spares.
451	Bedford filters, etc.
452	Bedford/MAN spares.
453	Land Rover seatbelt kits x32.
454	Land Rover/Wolf spares.
455	Power steering test kits x8.
456	Fuel pumps, hydraulic hose, etc.
457	Tools, etc.
458	Canvas tarpaulins, etc.
459	Tools.
460	Cooper filters x40.
461	FV 432 spares, etc.
462	Pinzgauer spares.
463	Air valves, etc.
464	Bedford/DAF spares.
465	Clutches/bearings, etc.
466	CAV fuel pumps, etc.
467	Hydraulic pumps, etc.
468	Bedford MJ turbo chargers, recon x16.
469	Land Rover seats x17.
470	Land Rover windscreen guards.
471	Electrical spares.
472	Hydraulic rams x4.
473	Hydraulic rams x3.
474	Hydraulic rams x2.
475	Hydraulic rams x3.
476	Prop shafts x5.
477	Hydraulic rams x2.
478	Prop shafts x2.
479	Hydraulic rams x6.
480	Hydraulic rams x2.
481	CVRT torsion bars x2.
482	Axle assembly x3.

483	JCB axle.
484	Hydraulic rams x3.
485	Prop shafts x4.
486	Hydraulic rams x10.
487	Prop shafts x17.
488	Prop shafts x3.
489	Hydraulic rams x5.
490	Perkins cylinder heads x9.
491	Foden Recovery PTO assembly.
492	7MD gearbox assembly.
493	Foden steering box x2. Recon.
494	SA silencer assembly x19.
495	NATO tow hitch x3.
496	Foden steering box x2.
497	Perkins Eagle cylinder head x4.
498	JCB Hydraulic valve Assembly x2.
499	Bedford compressor x4.
500	Supacat shaft axle assembly x2.
501	Leyland DAF doors x6
502	Recovery crane hook x2. New Unissued.
503	Recovery crane hook x2. New Unissued.
504	Recovery crane hook x2. New Unissued.
505	Crane hooks x8. New Unissued.
506	Crane hooks x8. New Unissued.
507	Hydraulic rams x6.
508	Hydraulic rams x6.
509	Trailer landing legs x4.
510	Trailer landing legs x4.
511	Crane hook ex reserve
512	Mounting plates.
513	Mine rollers x4.
514	Mine rollers x4.
515	MAN panels.
516	Hardwood floorboards.
517	Bedford wheel retaining rims x14.
518	Snow chains 1200 x20.
519	Trailer springs Etc.
520	Foden leaf springs x5.
521	Cab armour kits x5 pallets.
522	Bedford compressor assembly x6. Recon.
523	Bedford compressor assembly x11. Recon.
524	Bedford compressor assembly x6. Recon.
525	Bedford compressor assembly x8. Recon.
526	Bedford compressor assembly x6. Recon.
527	Bedford compressor assembly x6. Recon.
528	Bedford compressor assembly x6. Recon.
529	Recovery wheel chocks x40 approx.
530	Rotzler 25000 HS recovery winch.
531	Rotzler 25000 HS recovery winch.
532	Foden gearbox assembly recon.

533	Bedford radiator assembly x3. New.
534	Bedford radiator assembly x3. New.
535	Bedford radiator assembly x3. New.
536	Bedford radiator assembly x3. New.
537	Bedford radiator assembly x3. New.
538	Bedford radiator assembly x3. New.
539	Bedford radiator assembly x3. New.
540	Bedford radiator assembly x3. New.
541	Bedford radiator assembly x3. New.
542	Bedford radiator assembly x3. New.
543	Bedford radiator assembly x3. New.
544	Land Rover axle assembly x8.
545	Land Rover axle assembly x7.
546	Land Rover axle assembly x7.
547	Land Rover axle assembly x7.
548	Leyland Drops ZF gearbox.
549	Leyland Drops ZF gearbox.
550	Leyland Drops ZF gearbox.
551	Foden axle assembly.
552	Leland DAF axle assembly.
553	Leland DAF axle assembly.
554	Leland DAF axle assembly.
555	Leland DAF axle assembly.
556	Leland DAF axle assembly.
557	Leland DAF axle assembly.
558	Leland DAF axle assembly.
559	Leyland DAF door assembly x4.
560	Leyland DAF door assembly x4.
561	Leyland DAF door assembly x4.
562	Leyland DAF door assembly x4.
563	Leyland DAF door assembly x4.
564	Leyland DAF door assembly x4.
565	Foden Recovery front grill assembly x6.
566	Foden Recovery front bumper assembly x12.
567	Foden Recovery front panel assembly, etc.
568	Trailer ramp stays, etc.
569	Leyland DAF front panels x4.
570	Body armour kits, DROPs.
571	Body armour kits x6.
572	Leyland DAF front bumpers x6.
573	Vehicle body sides x10.
574	Body armour kits x2 pallets.
575	Flooring strips x160.
576	Vehicle body sides x10.
577	Vehicle body sides x10.
578	Vehicle body sides x6.
579	Land Rover 110 rear panels x10.
580	Land Rover 110 rear panels x6.
581	Stand off armour kit.
582	Land Rover 110 hardtop sides x4.

583	Bedford roof and hoops.
584	Leyland DAF bumpers x50 approx.
585	Michelin 17.5x6.75 new wheel rims x8.
586	Brake drums and FV road wheels x10.
587	Galvanised fencing, access ladder, etc.
588	Leyland DAF enhanced protection kit x4.
589	Leyland DAF enhanced protection kit x4.
590	Leyland DAF enhanced protection kit x4.
591	Leyland DAF enhanced protection kit x4.
592	Leyland DAF enhanced protection kit x4.
593	Vehicle ramps x18.
594	Vehicle ramps x18.
595	Vehicle ramps x18.
596	Vehicle ramps x18.
597	Land Rover 90 hardtop side panels x6.
598	Land Rover gearbox assembly.
599	MAN lead spring set x4.
600	Crane forklift attachment.
601	Kalmar forklift container handler RT 240. Ex-reserve.
602	Crane forklift attachment.
603	Crane forklift attachment.
604	Crane forklift attachment.
605	1,000 gall demountable fuel tanker c/w pump, filters and hose reels.
606	Engine lifting frames, tools and recovery equipment x5 pallets.
607	Aluminium scaffold, handrails, etc.
608	Canvas tarpaulins, etc.
609	Fully insulated, high specification military ambulance body. Suitable for L/R 130, etc. Ideal conversion camper, etc. Ex-reserve, c/w fittings.
610	Fully insulated, high specification military ambulance body. Suitable for L/R 130, etc. Ideal conversion camper, etc. Ex-reserve, c/w fittings.
611	Fully insulated, high specification military ambulance body. Suitable for L/R 130, etc. Ideal conversion camper, etc. Ex-reserve, c/w fittings.
612	Fully insulated, high specification military ambulance body. Suitable for L/R 130, etc. Ideal conversion camper, etc. Ex-reserve, c/w fittings.
613	Luminous pathway markers x25.
614	Luminous pathway markers x25.
615	Luminous pathway markers x25.
616	Luminous pathway markers x25.
617	Luminous pathway markers x25.
618	Luminous pathway markers x25.
619	Luminous pathway markers x25.
620	Luminous pathway markers x25.
621	Luminous pathway markers x25.
622	Luminous pathway markers x25.
623	CWC G10 quartz watch x10.
624	CWC G10 quartz watch x10.
625	CWC G10 quartz watch x10.
626	CWC G10 quartz watch x10.
627	CWC G10 quartz watch x10.
628	Prismatic marching compass x10.

629	Prismatic marching compass x10.
630	Prismatic marching compass x10.
631	Prismatic marching compass x10.
632	Prismatic marching compass x10.
633	Silva marching compass x50.
634	Silva marching compass x50.
635	Silva marching compass x50.
636	Silva marching compass x50.
637	Nikon telescopic rifle sight. Unused.
638	120mm Wombat drill round x2. Very collectable.
639	Motorola MT 1000 Radius x 10
640	Motorola MT 1000 Radius x 10
641	Philips , Motorola, AOR Radios x 8
642	BT Versatility V8 Phone System
643	Magellan GPS 110
644	Finepix A345 Digital Camera System
645	7.50R16 Goodyear G90 LR tyre, 10 ply rating x96.
646	7.50R16 Goodyear G90 LR tyre, 10 ply rating x96.
647	7.50R16 Goodyear G90 LR tyre, 10 ply rating x96.
648	7.50R16 Goodyear G90 LR tyre, 10 ply rating x96.
649	7.50x16 Goodyear Xtragrip Hi-miler LR tyre, 6 ply rating, unused x1.
650	235/85R16 Michelin XZL LR tyre, 10 ply rating x4.
651	235/85R16 Michelin XZL LR tyre, 10 ply rating x29.
652	7.50R16 Michelin XZL LR tyre, 10 ply rating x50.
653	8.25R16 Michelin XZL tyre, 8 ply rating x6.
654	8.25R16 Michelin XZL tyre on Pinzgauer rim, 8 ply rating x4.
655	8.25R16 Michelin XZL tyre on Pinzgauer rim, 8 ply rating x5.
656	8.25R16 Michelin XZL tyre on Pinzgauer rim, 8 ply rating x4.
657	6.50x16 Goodyear Super Himiler LR/trailer wheel + tyre, unused x7.
658	6.50x16 Camac (x4), Goodyear (x2) LR/trailer wheel + tyre. Camacs are unused.
659	285/75R16 BF Goodrich all terrain tyre x12.
660	285/75R16 BF Goodrich mud terrain tyre on Pinzgauer rim x6.
661	285/75R16 BF Goodrich mud terrain tyre x3.
662	8.25R16 Michelin XZA tyre, 14 ply rating, unused x4.
663	8.25R16 Dunlop SP111 tyres, 1 on rim, x2.
664	10R17.5 Bridgestone V steel Rib 180 tyre, unused x1.
665	265/70R19.5 Continental HTR + HS62 tyres x2 unused.
666	235/75R17.5 Michelin XDE2 tyres x2 unused.
667	235/75R17.5 Michelin XZE tyres x2 unused.
668	235/75R17.5 Michelin XZE2 tyres x3 unused.
669	235/75R17.5 Continental HTR tyre + rim x1.
670	235/75R17.5 Continental HTR tyre x5.
671	235/75R17.5 Michelin XDE tyres x11.
672	225/75R17.5 Michelin XZE tyres x4.
673	215/75R17.5 Dunlop SP252 tyres x2.
674	285/70R19.5 Goodyear G291T tyres x5.
675	285/70R19.5 Goodyear/Aurora tyres etc. x5.
676	265/70R19.5 Continental HTR (x4) + Goodyear 291T x1 - 3 with flat spots
677	8.5R17.5 Goodyear Regional RHS tyres x5.
678	275/80R22.5 Kumho x1 + Aeolus (x2) tyres

679	275/70R22.5 Michelin XZE2 tyre x1.
680	2.95/80R22.5 Dunlop/Michelin/Goodyear tyres x9.
681	385/65R22.5 Goodyear Marathon LHT tyres x2.
682	11R22.5 Continental/Dunlop tyres x6.
683	8.25R17 Pirelli Cinturato tyre x1.
684	11R22.5 Hankook/Goodyear/Dunlop/Bridgestone tyres x4.
685	295/80R22.5 Dunlop SP344 tyre x1 unused.
686	315/80R22.5 Michelin XZY tyre x1.
687	315/80R22.5 Bridgestone R249 + R297 tyres x4.
688	315/80R22.5 Michelin XZY-2 tyres x9.
689	295/80R22.5 Michelin XZY-2 tyres x3.
690	315/70R22.5 Double Star tyres x3.
691	315/70R22.5 Michelin XZE2+ tyres x5.
692	315/70R22.5 Michelin XDE2+ tyres x2.
693	315/70R22.5 Goodyear Regional RHD2+ tyres x3.
694	255/70R22.5 Michelin XZT mud + snow tyres x12.
695	315/70R22.5 Michelin (x6) + Goodyear tyres (x1).
696	395/85R20 Michelin XZL tyres x4.
697	395/85R20 Michelin XZL tyres x12.
698	335/80R20 Michelin XZL tyres 10.
699	14.00R20 Continental HCS 22 ply rating tyres x4 - tread + sidewall damage.
700	14.00R20 Continental HCS 22 ply rating tyres x4.
701	14.00R20 Continental HCS 22 ply rating tyres x4.
702	14.00R20 Continental HCS 22 ply rating tyres x4.
703	14.00R20 Continental HCS 22 ply rating tyres x3.
704	14.00R20 Michelin XZL tyres x2.
705	14.00R20 Continental HCS 22 ply rating wheel + tyre x1 - unused.
706	14.00R20 Continental HCS 22 ply rating wheel + tyre x1 - unused.
707	14.00R20 Continental HCS 22 ply rating wheel + tyre x1.
708	14.00R20 Continental HCS 22 ply rating tyres x20.
709	14.00R20 Continental HCS 22 ply rating tyres x20.
710	16.00R20 Michelin XZL tyres x16.
711	16.00R20 Michelin XZL tyres x13.
712	475/80R20 Michelin XML tyres x6.
713	475/80R20 Michelin XML tyres x6.
714	445/65R22.5 Michelin XZL (Leyland DROPS) wheel + tyre x2.
715	445/65R22.5 Michelin XZL (Leyland DROPS) wheel + tyre x2.
716	445/65R22.5 Michelin XZL (Leyland DROPS) wheel + tyre x3.
717	445/65R22.5 Michelin XZL (Leyland DROPS) wheel + tyre x3.
718	445/65R22.5 Michelin XZL tyres x10.
719	445/65R22.5 Michelin XZL tyres x10.
720	445/65R22.5 Michelin XZL tyres x10.
721	445/65R22.5 Michelin XZL tyres x10.
722	445/65R22.5 Michelin XZL tyres x10.
723	445/65R22.5 Michelin XZL tyres x10.
724	445/65R22.5 Michelin XZL (Leyland DROPS) wheel + tyre x2.
725	445/65R22.5 Michelin XZL (Leyland DROPS) wheel + tyre x2.
726	12.5-18 Mitas MPT-04 plant tyre x1 unused.
727	16.00R20 Michelin XZL tyre x1.
728	16.00R20 Michelin XL tyre x2 - 1x casing.

729	17.5-25 Firestone Earthmover 16 ply rating tyres x3.
730	17.5-25 Earthmover tyres x4.
731	445/65R22.5 Michelin XZL tyres x8.
732	445/65R22.5 Michelin XZL tyres x10.
733	280/80-18 Firestone super traction loader tyres x4.
734	10.5-18 BKT/MPT/SOLIDEAL loader/plant tyres x16.
735	280/80-18 Firestone super traction loader wheel + tyre x4.
736	12.5-18 JCB Sitemaster tyre x1 unused.
737	12.5-18 JCB Sitemaster tyre x1.
738	10.5-18 Solideal/BKT loader/plant tyres x3.
739	8.25-15 Continental Industrie forklift/industrial tug tyres x6.
740	24R21 Michelin XL tyres x2.
741	440/80R28 Goodyear INDIT530 plant tyres x5.
742	12.00R20 Goodyear G388 tyres x2.
743	255/65R16 Pirelli Scorpion tyres x2.
744	285/75R16 Bridgestone Dueller AT tyre x1 unused.
745	9.00-16 Petlas NT3 wheel + tyre x3.
746	10.00R20 Semperit Euroway tyre x1.
747	10.00R20 Michelin XZL tyre x1.
748	10.00R20 Avon traction supreme 16 ply rating tyre x1 - unused.
749	445/95R2.5 Michelin X-crane tyre x1 - tread surface damage.
750	445/80R25 Bridgestone V steel G traction wheel + tyre x1.
751	17.5R25 Michelin XLB tyre x1 unused.
752	18R22.5 Michelin XL tyre x1.
753	15.5/80R20 Michelin G20 Pilote XL tyre x1.
754	15.5/80R20 Michelin G20 Pilote XL wheel + tyre x1.
755	20.5R25 Michelin XTLA Earthmover tyres x2.
756	12.00R20 Goodyear G388 Unisteel tyres x4 - unused.
757	12.00R20 Goodyear G388 Unisteel tyres x4 - unused.
758	12.00R20 Goodyear G388 Unisteel wheel + tyres x3 unused.
759	14.00R20 Michelin XZL tyre c/w RF insert x1 - unused.
760	445/70R24 Goodyear IT510 agricultural/EM tyre x1 - unused.
761	7.00R12 Michelin XZM Stabil X tyres x2 unused.
762	7.00R15 Michelin XZM Stabil X tyre x1 unused.
763	225/75R15 Michelin XZM X tyre x2 unused.
764	12R22.5 Michelin XZY-2 tyre x2 unused.
765	315/70R22.5 Michelin X multiway x1 unused.
766	8.25R20 Dunlop SP111 tyre x1 unused.
767	10R22.5 Michelin XZY tyre x1 unused.
768	11L-16SL Goodyear Labourer 12 ply rating tyre x1 unused.
769	10.00-20 Mitas Earthmover EM, 16 ply rating tyres x2.
770	295/80R22.5 Dunlop SP341 tyre x1 unused.
771	315/70R22.5 Michelin XZE2+ tyre x1 - unused.
772	12R22.5 Michelin XZY-2 tyre x1 - unused.
773	275/70R22.5 Michelin XDE2+ tyre x1.
774	7.50R16 Goodyear G90 LR tyre, 10 ply rating x10.
775	7.50R16 Goodyear G90 LR tyre, 10 ply rating x10.
776	7.50R16 Goodyear G90 LR tyre, 10 ply rating x10.
777	7.50R16 Goodyear G90 LR tyre, 10 ply rating x10.
778	7.50R16 Goodyear G90 LR tyre, 10 ply rating x10.

779	7.50R16 Goodyear G90 LR tyre, 10 ply rating x10.
780	7.50R16 Goodyear G90 LR tyre, 10 ply rating x10.
781	7.50R16 Goodyear G90 LR tyre, 10 ply rating x10.
782	7.50R16 Goodyear G90 LR tyre, 10 ply rating x10.
783	7.50R16 Goodyear G90 LR tyre, 10 ply rating x10.
784	14.00R20 Continental HCS M+S wheel + tyre, 22 ply rating x4.
785	14.00R20 Continental HCS M+S wheel + tyre, 22 ply rating x4.
786	14.00R20 Continental HCS M+S wheel + tyre, 22 ply rating x4.
787	20.5R25 Michelin XL wheel + tyre x1.
788	525/80R25 Michelin XLB wheel + tyre x1.
789	25x8R12 Carlisle ACT XLR quad/ATV wheel + tyre x8 - unused.
790	25x8R12 Carlisle ACT XLR quad/ATV wheel + tyre x8 - unused.
791	25x8R12 Carlisle ACT XLR quad/ATV wheel + tyre x8 - unused.
792	25x8R12 Carlisle ACT XLR quad/ATV wheel + tyre x8 - unused.
793	25x10-12 Carlisle AT489 quad/ATV tyre x10 (7 unused).
794	25x10-12 Carlisle AT489 quad/ATV tyre x9 (8 unused).
795	25x8R12 Carlisle ACT XLR quad/ATC wheel + tyre x4 - unused.
796	25x11R12 Carlisle ACT XLR quad/ATV wheel + tyre x6 - unused.
797	31x15.50-15 Mitas traction TR06 8 ply rating LGP/Supacat tyres x6 - unused.
798	31x15.50-15 Mitas traction TR06 8 ply rating LGP/Supacat tyres x6 - unused.
799	31x15.50-15 Mitas traction TR06 8 ply rating LGP/Supacat tyres x6 - unused.
800	31x15.50-15 Mitas traction TR06 8 ply rating LGP/Supacat tyres x6 - unused.
801	39x13 Dunlop Type VII aircraft rim + tyre, 16 ply rating x2.
802	39x13 Dunlop Type VII aircraft rim + tyre, 16 ply rating x4.
803	39x13 Dunlop Type VII aircraft rim + tyre, 16 ply rating x4.
804	39x13 Dunlop Type VII aircraft rim + tyre, 16 ply rating x4.
805	39x13 Dunlop Type VII aircraft rim + tyre, 16 ply rating x4.
806	39x13 Dunlop Type VII aircraft rim + tyre, 16 ply rating x4.
807	50x18 Dunlop Type VII aircraft rim + tyre, 26 ply rating x1.
808	50x18 Dunlop Type VII aircraft rim + tyre, 26 ply rating x2.
809	50x18 Dunlop Type VII aircraft rim + tyre, 26 ply rating x2.
810	50x18 Dunlop Type VII aircraft rim + tyre, 26 ply rating x2.
811	50x18 Dunlop Type VII aircraft rim + tyre, 26 ply rating x2.
812	50x18 Dunlop Type VII aircraft rim + tyre, 26 ply rating x2.
813	50x18 Dunlop Type VII aircraft rim + tyre, 26 ply rating x2.
814	50x18 Dunlop Type VII aircraft rim + tyre, 26 ply rating x2.
815	50x18 Dunlop Type VII aircraft rim + tyre, 26 ply rating x2.
816	50x18 Dunlop Type VII aircraft rim + tyre, 26 ply rating x2.
817	50x18 Dunlop Type VII aircraft rim + tyre, 26 ply rating x2.
818	50x18 Dunlop Type VII aircraft rim + tyre, 26 ply rating x2.
819	50x18 Dunlop Type VII aircraft rim + tyre, 26 ply rating x2.
820	50x18 Dunlop Type VII aircraft rim + tyre, 26 ply rating x2.
821	50x18 Dunlop Type VII aircraft rim + tyre, 26 ply rating x2.
822	50x18 Dunlop Type VII aircraft rim + tyre, 26 ply rating x2.
823	50x18 Dunlop Type VII aircraft rim + tyre, 26 ply rating x2.
824	50x18 Dunlop Type VII aircraft rim + tyre, 26 ply rating x2.
825	18x5.5 Dunlop + 22x6.50-11 Dunlop mixed aviation tyres x approx. 29.
826	18x5.5 Dunlop + 22x6.50-11 Dunlop mixed aviation tyres x approx. 27.
827	18x5.5 Dunlop + 22x6.50-11 Dunlop mixed aviation tyres x approx. 25.
828	18x5.5 Dunlop + 22x6.50-11 Dunlop mixed aviation tyres x approx. 27.

829	18x5.5 Dunlop + 22x6.50-11 Dunlop mixed aviation tyres x approx. 27.
830	18x5.5 Dunlop + 22x6.50-11 Dunlop mixed aviation tyres x approx. 31.
831	18x5.5 Dunlop + 22x6.50-11 Dunlop mixed aviation tyres x approx. 26.
832	8.50-12 Goodyear aviation tyres x11.
833	Mixed aviation tyres to include Dunlop + Aviator x24.
834	8.50-10 Aviator 12 ply rating aviation tyre x32.
835	8.50-10 Aviator 12 ply rating aviation tyre x33.
836	6.00-6/17.5x5.50-7.5/6.50-10 mixed aviation tyres to unclude Dunlop/Goodyear, etc. Approx. 60.
837	18x5.5 Dunlop aviation tyres x approx. 50+.
838	22x6.50-11+18x5.5 Dunlop aviation tyres x approx. 25+.
839	6.50x10 Dunlop aircraft tyre + rim x2.
840	120/80-18 Michelin T63 motorcycle tyre (x2) + 90/90-21 Michelin SITAC m/b tyres (x5) - unused.
841	20 inch 8 stud split rim for Leyland 4x4 x10.

Witham Specialist Vehicles Ltd

GENERAL TERMS AND CONDITIONS

A. General

1. All Witham Specialist Vehicles Ltd sales are governed exclusively by the following conditions and the conditions of the respective tenders. Alternative agreements require confirmation by Witham Specialist Vehicles Ltd in writing.

B. The Tender Bid Procedure

1. Inspect goods thoroughly before submitting a bid. Warranty claims are excluded.
2. Bids must be submitted in writing or electronically preferably on Witham Specialist Vehicles Ltd's form. Submission of bids by post or by hand is also acceptable. Bids sent by fax must be confirmed by sending the original hard copy by post.
3. The correct lot number must be given.
4. VAT will be charged in addition to the bid price
5. Bids must include the exact address of the bidder including telephone number, fax number and email. If using a bidding form do not forget the legally binding signature.
6. Withdrawal of a bid must arrive at Witham Specialist Vehicles Ltd in writing before the expiry of the tender deadline, if the bidder submits several bids for the same lot, the valid bid is always the last bid received.
7. Bids may not be considered and may be rejected by Witham Specialist Vehicles Ltd if they are not in accordance with the above-mentioned provisions or if they contain conditions or reservations.
8. The bidder whose bid has been accepted will be notified within 7 days, Bidders who do not receive notification within this period may assume that their bid was not considered. Witham Specialist Vehicles Ltd's liability for incorrect verbal information is limited to deliberateness and gross negligence.

C. Sales

1. Bids shall principally be submitted in sterling. Bids in foreign currencies will be converted at the official exchange selling rate in sterling on the day of bid acceptance.
2. Submitted bids are binding offers for the conclusion of a contract to which the bidder is bound for a period of 14 days following the tender deadline. The highest bidder has no claim for acceptance of his bid,
3. The sales contract with a bidder shall be concluded once the acceptance of his bid has been declared to him by phone, in formless writing or by means of a confirmation of order and invoice (Notification of the acceptance).
4. VAT will be charged in addition to the bid price.

D. Payment

1. Payment shall be received by Witham Specialist Vehicles Ltd within 7 days of date of Invoice without any deduction. Cash, cheques or bank transfers are accepted as payment only.
2. Payment is to be made in sterling. Banking fees and exchange differences are at the Buyer's expense.
3. Goods will not be released until all funds are cleared.

E. Delivery

1. On payment of the full invoice amount Buyer will receive a release note. In case of Intra Community Deliveries, prior to handing over the release note, the buyer has to declare in writing to deliver the goods to a member state of the Community.
2. The Buyer is obliged to collect the goods purchased within 14 days of the date of Invoice. This pick-up obligation is one of the Buyer's principal performance obligations. Before removal, the Buyer must make prior arrangements with the contract officer at the storage location concerned
3. Witham Specialist Vehicles Ltd as the exporter is responsible for adherence of the customs regulations and the export licensing procedure.
4. Goods are sold ex storage location. Assistance will be given for loading unless otherwise stated,
5. The Buyer shall be liable for any loss or damage caused by himself or his agents arising out of or in any way in connection with the performance of his contractual obligations (especially during pickup of the goods) and in this context shall indemnify Witham Specialist Vehicles Ltd and its principals against all relevant third party claims including litigation costs. Unless excluded by law, the Buyer waives all rights to claim against Witham Specialist Vehicles Ltd and its principals in respect of any loss, damage or injury suffered by him, his personnel or his agents in connection with the take-over, collection or transportation of the goods and in this respect Witham Specialist Vehicles Ltd and its principals shall also be indemnified against all claims from third parties.
6. The risk of deterioration or loss of the goods transfers to the Buyer on takeover of the goods.
7. In the event Witham Specialist Vehicles Ltd is unable to make goods available prior to the transfer of risk to the Buyer, the Buyer is entitled only to reimbursement of the invoice amount, Further claims against Witham Specialist Vehicles Ltd are excluded unless the action of Witham Specialist Vehicles Ltd can be proved as to be deliberate or grossly negligent.

F. Retention of Title

1. The title of the goods transfers to the Buyer once payment of the purchase price has been made and hand over of the goods has been completed.

G. Warranty and Liability for Defects

1. Goods are "sold as seen", excluding any warranty claims. Witham Specialist Vehicles Ltd gives no guarantee as to description, quantity, and quality, condition, suitability for use and licensing, undamaged history or the non-existence of apparent or hidden defects.

2. Remarks regarding the description, condition and assortment of the goods as well as indication of quantities in "en-bloc" lots are non-binding. Information's, statements and promises are without obligation unless confirmed by Witham Specialist Vehicles Ltd in writing.

3. The Buyer shall be responsible for adherence, to safety, licensing and environmental protection requirements as well as for applying for operating permits.

H. Default In Payment, Failure to Remove Goods

1. If Buyer fails to pay the full amount of the purchase price in due time, Witham Specialist Vehicles Ltd shall be entitled to charge default interest at 2% above the current Longer Term Refinancing Rate of the European Central Bank, but not less than 8% and to retain all performance ensued from all purchase agreements concluded with the Buyer.

2. If Buyer fails to remove the goods in due time, Witham Specialist Vehicles Ltd shall be entitled to charge default fees In the amount of storage fees usually Charged by freight forwarders and for to have the goods removed and to store elsewhere on account and risk of the Buyer. Witham Specialist Vehicles Ltd shall also be entitled to refuse the acceptance of buyer's further performance. To sell or dispose of the goods over the counter and to charge the Buyer with all costs and damages incurred.

Witham Specialist Vehicles Ltd
Also sell vehicles and equipment on a
day to day basis.

Please look on

www.mod-sales.com

or telephone our sales team on

01476 861361

with your enquiries.

Tender Date

--

Witham Specialist Vehicles Ltd

Honeypot Lane, Colsterworth, Grantham, England, NG33 5LY
 Telephone: +44 (0) 1476 861361 Fax: +44 (0) 1476 861441

Witham Specialist Vehicles Ltd
 Honeypot Lane
 Colsterworth
 Grantham
 England
 NG33 5LY

BIDDING FORM

After inspection and under acknowledgement of Witham Specialist Vehicles Limited's General Terms and Conditions we offer the amounts for the lots as listed below.
VAT will be added on top of the offer.

LOT No.	Brief Description	Amount £ Sterling

LOT No.	Brief Description	Amount £ Sterling

PLEASE COMPLETE IN BLOCK CAPITALS

Contact Name and Company		Date
Street		Stamp / Signature
City		
Country Code / Postal Code		
Telephone	Fax	
Email	Mobile	
VAT Identification No.		INVALID IF NOT SIGNED