



DRAFT

WALK BIKE

Huntsville

DRAFT

Northwest Arkansas Regional Bicycle and Pedestrian Master Plan

Prepared by the Northwest Arkansas Regional Planning Commission

April 2021

HUNTSVILLE WALK/BIKE ACTION PLAN

OVERVIEW

Huntsville is a city in Madison County, Arkansas. The city is the county seat of Madison County, located in the northwest corner of the state. Huntsville is a rural community with a hometown atmosphere that has a 2010 census population of 2,346 and covers 5.4 square miles. Huntsville is rich with history and community. During the American Civil War in 1862, it was the site of what became known as the Huntsville Massacre. Neighboring communities include Hindsville, Wesley, Forum, Kingston and Marble. Mitchusson Park is a large City park located close to the Huntsville airport. Withrow Springs State Park and McIlroy State Game Management Area are regional destinations to Huntsville. The community is characterized by low-density development in a rural and scenic landscape. Many roads in Huntsville are narrow leaving little room for cyclists and cars to pass. Key opportunities include shoulder improvements along several main roads through the community allowing safer passage for motorists, pedestrians, and cyclists, connecting citizens to city parks and commercial establishments, and regional destinations. Most neighborhood roads and side roads in Huntsville are excellent places to go for a walk/run or a bicycle ride. This Plan is part of the Northwest Arkansas Bicycle and Pedestrian Plan.

Regional Destinations

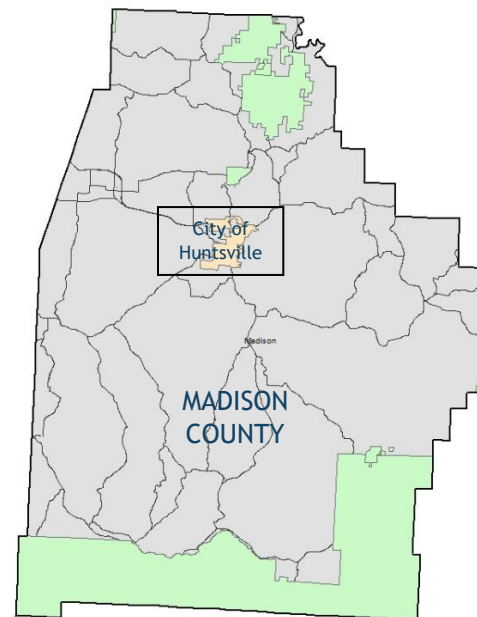
- »Withrow Springs Park
- »McIlroy State Game Management Area
- »Kings River
- »Hobbs State Park
- »Beaver Lake
- »Buffalo National River

Other Key Destinations

- »Mitchusson Park
- »Health Unit
- »Senior Center
- »Huntsville Sports Arena
- »Schools
- »Grocery Stores
- »Library
- »Employment

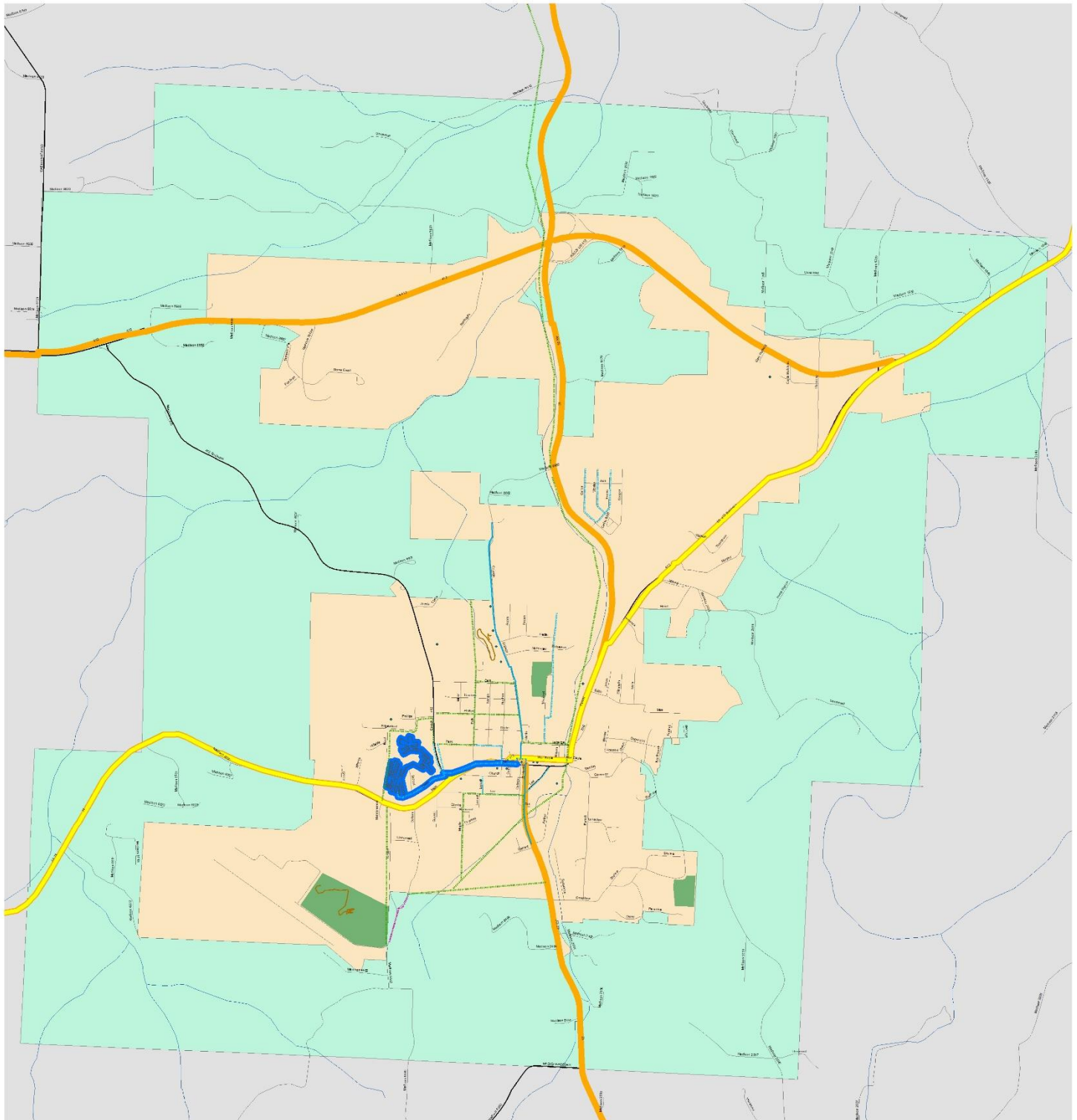


REGIONAL LOCATION MAP





MAP 1 HUNTSVILLE COMMUNITY PLAN MAP - DRAFT

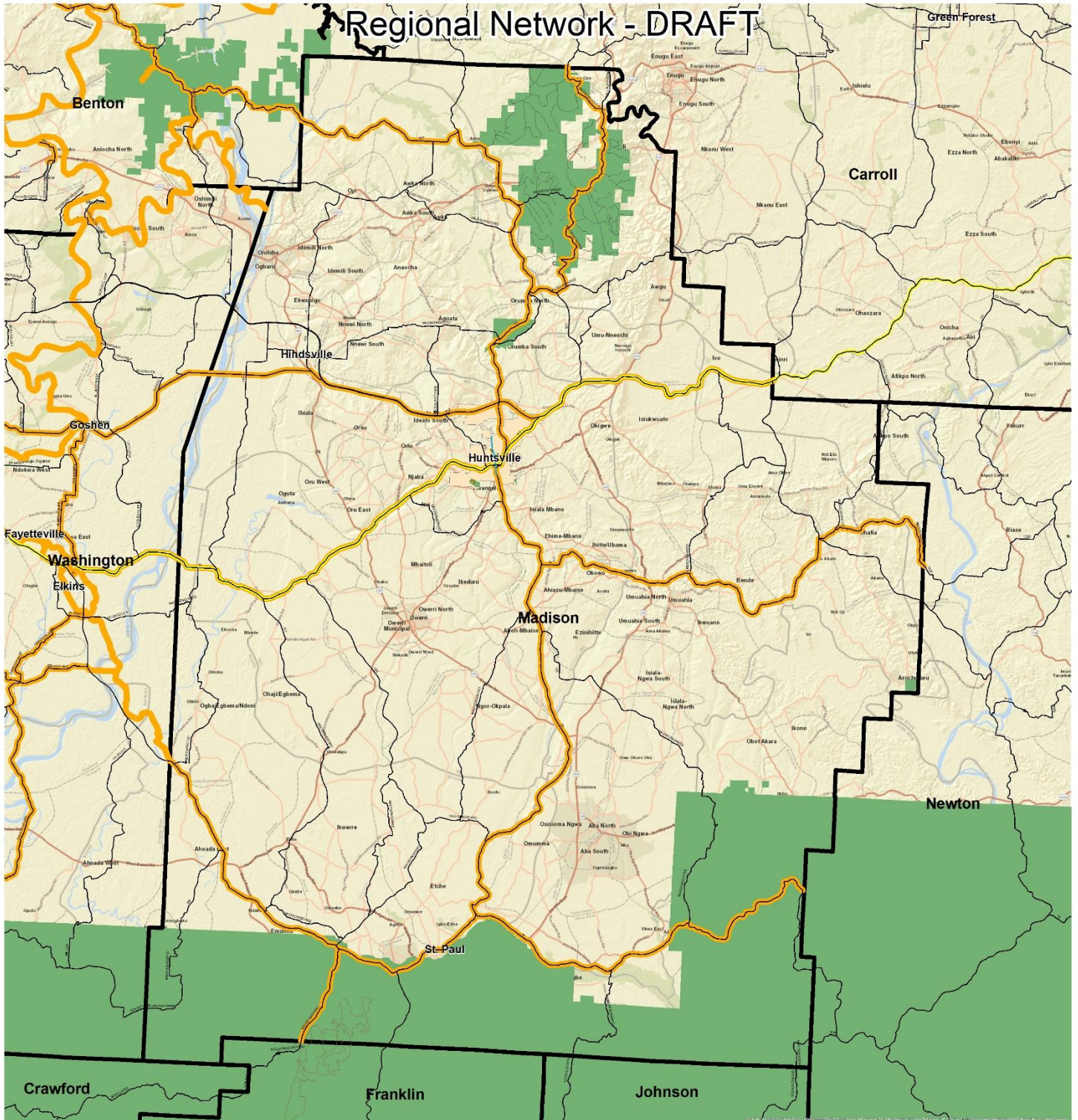


- | | | | |
|---------------------------|--|--------------------|--------------------------|
| — Shared Use Paved Trail | Proposed Bike Lane | — Catalyst Project | • POI_Huntsville |
| — Sidewalk | Proposed Natural Surface Trail | — Heritage Trail | ■ Parks/Cemeteries |
| — Bike Lane | Proposed Neighborhood/Park Trail | — Regional_Network | — FUNCTIONAL_CLASS_ARDOT |
| — Protected Bike Lane | Proposed Protected Bike Lane | | — Roads |
| — Shared Roadway | Proposed Shared Roadway | | — STREAMS |
| — Natural Surface Trail | Proposed Shared Use Paved Trail | | ■ CITY_LIMITS_HUNTSVILLE |
| — Neighborhood/Park Trail | Proposed Gravel Grinding (Shared Rdwy) | | ■ PLANNING_AREA |
| | | | ■ MadisonCountyBoundary |





MAP 1 HUNTSVILLE REGIONAL PLAN - DRAFT



- Regional_Network
- Heritage Trail
- Catalyst Project
- Highways
- OZARKNFS_TRAILS_NFS
- Park RoadsPUBLIC_ACCESS_AGFC
- Parks/Cemeteries
- CITY_LIMITS_HUNTSVILLE
- CountyBoundaries

Date: 4/12/2021



Topic	Key Needs & Notes
<i>Regional Needs</i>	<ul style="list-style-type: none"> » Connect City of Huntsville to Withrow Springs State Park, McIlroy State Game Management Area, Hobbs State Park – Conservation Area, and Ozark National Forest. » Connect City of Huntsville to Benton/Washington Counties’ trail network.
<i>Other Key Needs</i>	<ul style="list-style-type: none"> » Develop sidewalk links around the downtown, school facilities, parks, and County social services – Senior Center, Library, and Health Unit. » Address barrier roadways (AR74, AR23, US412B, US412). » Improve neighborhood connectivity. » Establish City of Huntsville trailhead.
Facility Recommendation	Recommendation Detail
<i>Sidewalks</i>	<ul style="list-style-type: none"> » Downtown Area: Develop sidewalk links around the downtown, commercial areas, Schools, Huntsville Sports Arena and City Hall. » Develop sidewalks at school facilities to connect to City paths. » Develop sidewalks in residential neighborhoods. » Develop sidewalks with new residential development.
<i>On-Street Bike</i>	<ul style="list-style-type: none"> » Develop on-street bike route network, including shoulder improvements. » Gravel Grinding trail (shared roadway)-to connect to existing gravel routes in the County.
<i>Intersections</i>	<ul style="list-style-type: none"> » US412B crossings: Improvements needed in the downtown area and at schools. » AR74 crossing improvements needed near school. » AR74 and AR23 intersection. » Other intersection improvements will need to be made as network expands.
<i>Shared Use Facilities</i>	<ul style="list-style-type: none"> » Shared Use Trail- Connect schools to neighborhoods and downtown. » Shared Use Paved Trail-Develop paved trail connecting Mitchussun Park, schools, commercial areas, neighborhoods and downtown. » Sidepath-Develop a sidepath along AR23 connecting downtown to Huntsville north. » Natural Surface Trail-Develop natural surface trails connecting Mitchussun Park to schools. Develop natural surface trails around schools and to neighborhoods.
Other Topics	Notes
<i>Multi-Modal Connections</i>	<ul style="list-style-type: none"> » City of Huntsville is not currently connected by public transit.
<i>Heritage Trail</i>	<ul style="list-style-type: none"> » The Heritage Trail runs east to west along US Hwy 412B and AR 74 through the City connecting to rural Madison County, Washington County and to the City of Fayetteville.



Program & Policy Recommendations

The table below presents a summary of recommendations organized by category which identifies the recommended program, time-frame for implementation, and lead entity. The table identifies Bronze (short-term), Silver (mid-term) and Gold (long-term) actions that can help achieve recognition as a Walk and Bicycle Friendly Community.

For many of these actions, there is an opportunity for the communities of the region to share resources, with individual communities participating in regional programs, attending trainings or meetings convened at the regional scale, or implementing regionally developed programs at the local level. Recommendations specific to the Six E's (Engineering, Education, Encouragement, Enforcement, and Evaluation (with Equity considered broadly through all)) are found below. Economy is included as an additional category to help demonstrate the benefits of implementing all of the E's. Refer to Appendix D for detailed guidance on implementing each item, including a description of recommended actions, regional and local roles, as well as sample programs.

Program	Term	Lead Entity
Engineering		
Non-Motorized Transportation Training for Engineers and Planners	Short	NWARPC, City of Huntsville
Bike/Pedestrian Facility Inclusion in Engineering Documents, Plans, and Drawings	Short	NWARPC, City of Huntsville
Complete Streets Policy	Medium	City of Huntsville
Bicycle Parking	Medium	City of Huntsville
Enhanced Funding for Bike and Pedestrian Projects	Medium	City of Huntsville
Education		
Safe Routes to School	Medium	City of Huntsville, Huntsville School District
Network with existing capacity in NWA	Medium	City of Huntsville, MCSO, BikeNWA, Ozark Off-Road Cyclists; PedalItForward, NWA Trailblazers, ARNICA
Encouragement		
Walking and Biking Promotion Activities	Short	City of Huntsville, Huntsville School District
Equity Oriented Programs	Short	City of Huntsville
Bike and Walk Month	Medium	City of Huntsville
Group Rides and Walks	Medium	City of Huntsville, Huntsville School District
Enforcement		
Targeted Bicycle and Pedestrian Enforcement	Short	City of Huntsville, MCSO
Trainings for Law Enforcement Officers	Short	NWARPC, City of Huntsville, MCSO
Bike and Foot Patrol Units	Medium	City of Huntsville, MCSO
Annual Meeting with Police, Planners and Engineers to Evaluate Collision Trends, Infrastructure Needs and Areas for Targeted Enforcement	Medium	NWARPC, City of Huntsville, MCSO, Huntsville Fire Department
Evaluation		
Active Transportation Committee	Short	NWARPC, City of Huntsville
Bicycle, Pedestrian, and Trail Count Program	Medium	City of Huntsville
Walking, Bicycling and Trails Report Card	Medium	City of Huntsville
Economy		
Bicycle and Walking Tourism Strategy	Medium	Huntsville Economic Development and Tourism, City of Huntsville



Northwest Arkansas Regional Bicycle and Pedestrian Master Plan
Prepared by the Northwest Arkansas Regional Planning Commission
May 2021