

Customer Service

At Rain Bird, we believe that when you purchase our products, you should also receive the support you need to ensure that they perform as designed. Like our products, Rain Bird customer service is designed to exceed expectations. When you call with questions about orders or new products, you get the support you need from the top water management professionals in the industry, backed by our vast global network of distributor-partners.

Worry-Free Warranties

Our comprehensive product warranties make it even easier to choose Rain Bird and relax. Most Rain Bird Landscape Irrigation products are warranted to the trade for a period of either three or five years from the date of original purchase. A Rain Bird warranty is hassle-free support that enables maximum peak performance by irrigation system professionals. For you, it's the added peace of mind of knowing Rain Bird is there when you need it.

Rain Bird's Professional Customer Satisfaction Policy

Rain Bird will repair or replace at no charge any Rain Bird professional product that fails in normal use within the warranty period stated below. You must return it to the dealer or distributor where you bought it. Product failures due to acts of God including without limitation, lightning and flooding, are not covered by this warranty. This commitment to repair or replace is our sole and total warranty.

Implied Warranties of Merchantability and Fitness, if Applicable, are Limited to One Year from the Date of Sale.

We will not, under any circumstances be liable for incidental or consequential damages, no matter how they occur.

I. Landscape Irrigation and Drainage Products

1800 Series Pop-Up Spray Heads, U-Series Nozzles, PA-8S and PA-8S-PRS Shrub Adapters, 1300 and 1400 Bubblers, 5000 Series Rotors, 5500 Series Rotors, 8005 Series Rotors, Falcon® 6504 Series Rotors, PEB/PESB/PESB-R Plastic Valves, DV/DVF and ASVF Plastic Valves, VB Series Valve Boxes, Internet Connected Water Meters (ICWM), and XF Series Dripline* – 5 years

C2 Power Unit – 2 years

Pump Start Relays – 1 year for controls/electronics, 2 years for enclosure

All other Landscape Irrigation and Drainage products – 3 years

** XF Series Dripline - 7 Years on Environmental Stress Cracking (ESCR)*

For complete information and details please visit:

<http://www.rainbird.com/corporate/CustomerSatisfactionPolicy.htm>

Follow these photographs to identify the position of the date code on residential plastic valves.

Code	JA	FE	MR	AP	MY	JN	JU	AU	SE	OC	NO	DE
Month	January	February	March	April	May	June	July	August	September	October	November	December

VALVES-RESIDENTIAL PLASTIC

Models

Images

Date Code Interpretation

DV / DVF Valves

NPT
BSP
S x S
MB



23 JN 10 D = 23 June 2010

23 = Day of the month

JN = June

10 = Year (2010)

D = Product Line
(important when reporting a failure)

ASVF Valves

Date code position is similar to DV Valves



Model name is stamped on anti-siphon lid



Follow these photographs to identify the position of the date code on residential plastic valves.

Code	JA	FE	MR	AP	MY	JN	JU	AU	SE	OC	NO	DE
Month	January	February	March	April	May	June	July	August	September	October	November	December

VALVES-RESIDENTIAL PLASTIC

Models

Images

DateCodeInterpretation

HV Series Valves

NPT

BSP

S x S

MB



06 DE 18 A = 6 December 2018

06 = Day of the month

DC = December

18 = Year (2018)

A = Production Line

(Important when reporting a failure)

Follow these photographs to identify the position of the date code on residential plastic valves.

Code	JA	FE	MR	AP	MY	JN	JU	AU	SE	OC	NO	DE
Month	January	February	March	April	May	June	July	August	September	October	November	December

VALVES-RESIDENTIAL PLASTIC

Models

Images

DateCodeInterpretation

JTV / JTVF Valves

- NPT
- BSP
- S x S
- MB
- Angle



C 06 DC 09 B = 6 December 2009

C = Prefix used internally

06 = Day of the month

DC = December

09 = Year (2009)

B = Production Line

(Important when reporting a failure)

Follow these photographs to identify the position of the date code on commercial plastic valves.

Code	JA	FE	MR	AP	MY	JN	JU	AU	SE	OC	NO	DE
Month	January	February	March	April	May	June	July	August	September	October	November	December

VALVES-COMMERCIAL PLASTIC

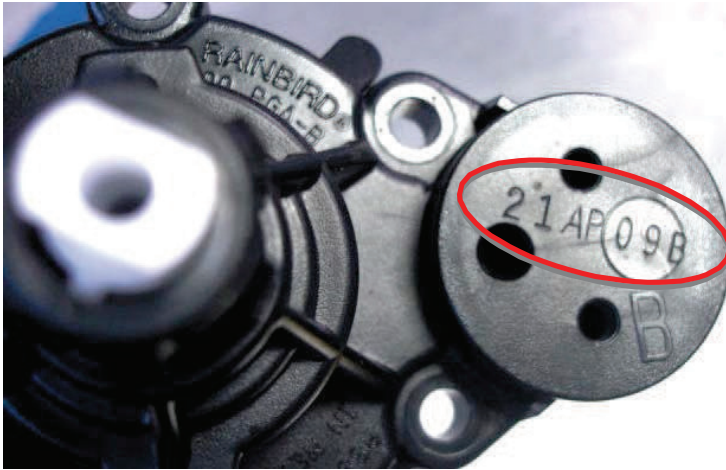
Models

Images

Date Code Interpretation

PGA Valves

NPT
BSP



21 AP 09 B = 21 April 2009

21 = Day of the month

AP = April

09 = Year (2009)

B = Production Line
(Important when reporting a failure)

PEB / PESB / PESB-R Valves

1.5" and 2"
Models



20 AP 09 B = 21 April 2009

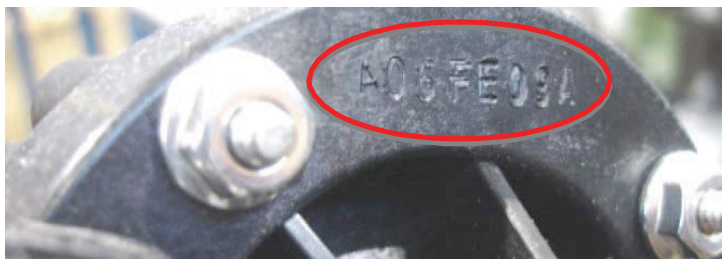
20 = Day of the month

AP = April

09 = Year (2009)

B = Production Line
(Important when reporting a failure)

1" Models



Scrubber
Models



Remove SCRUBBER label for access to the stamp (see left)

Follow these photographs to identify the position of the date code on commercial brass valves.

Code	JA	FE	MR	AP	MY	JN	JU	AU	SE	OC	NO	DE
Month	January	February	March	April	May	June	July	August	September	October	November	December

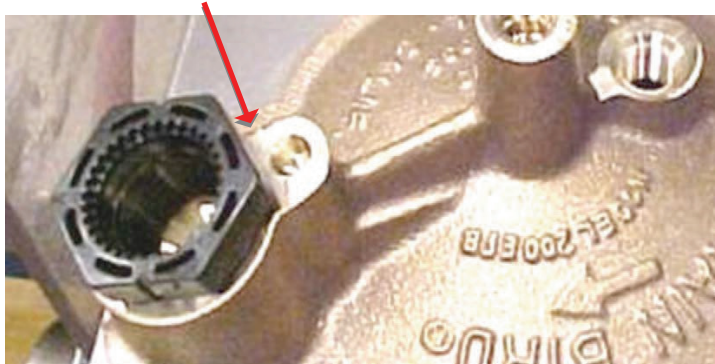
VALVES-COMMERCIAL BRASS

Models

Images

Date Code Interpretation

EFB Valves



BPE Valves



08 JL 05 = 8 July 2005

08 = Day of the month

JL = July

05 = Year (2005)

Follow these photographs to identify the position of the date code on commercial brass valves.

Code	JA	FE	MR	AP	MY	JN	JU	AU	SE	OC	NO	DE
Month	January	February	March	April	May	June	July	August	September	October	November	December

VALVES-COMMERCIAL BRASS

Models

Images

Date Code Interpretation

QCV-QuickCouplingValve

Date code located on top of the valve, under the cover

12 NO 02 = 12 November 2002



12=Dayofthemoth

NO -November

02 = Year (2002)

Follow these photographs to identify the position of the date code on commercial and residential rotors.

Code	JA	FE	MR	AP	MY	JN	JU	AU	SE	OC	NO	DE
Month	January	February	March	April	May	June	July	August	September	October	November	December

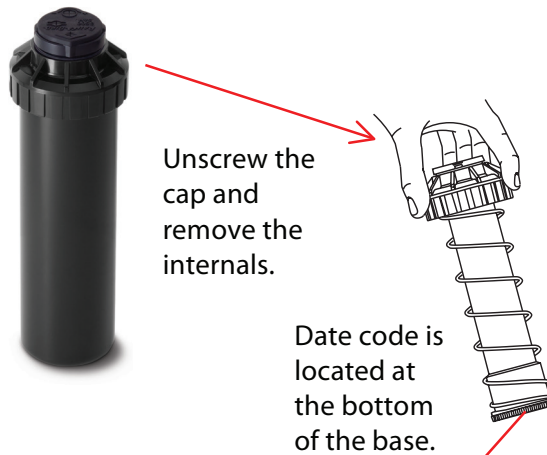
ROTORS

Models

Images

Date Code Interpretation

3500 Series Rotors

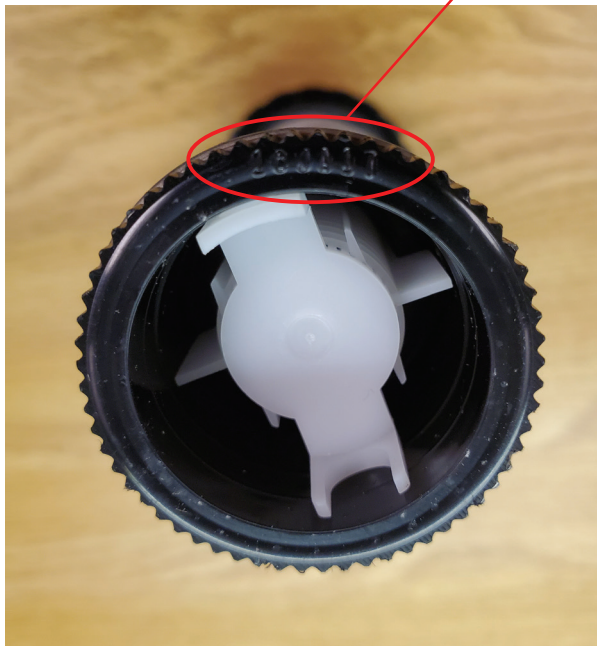


16 JA 17 = 16 January 2017

16 = Day of the month

JA = January

17 = Year (2017)



Follow these photographs to identify the position of the date code on commercial and residential rotors.

Code	JA	FE	MR	AP	MY	JN	JU	AU	SE	OC	NO	DE
Month	January	February	March	April	May	June	July	August	September	October	November	December

ROTORS

Models

Images

Date Code Interpretation

5000 Series Rotors



23 NO 18 = 18 November 2018

23 = Day of the month

NO = November

18 = Year (2018)

6504 Series Rotors



22 MY 17 = 22 May 2017

22 = Day of the month

MY = May

17 = Year (2017)

Follow these photographs to identify the position of the date code on commercial and residential rotors.

Code	JA	FE	MR	AP	MY	JN	JU	AU	SE	OC	NO	DE
Month	January	February	March	April	May	June	July	August	September	October	November	December

ROTORS

Models

Images

Date Code Interpretation

8005 Series Rotors



15 JAN 18 = 15 January 2018

15 = Day of the month

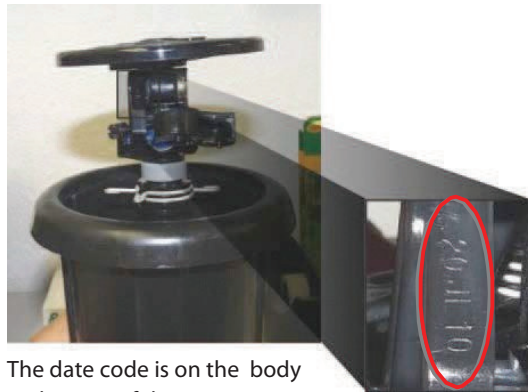
JAN = January

18 = Year (2018)

Maxi-Paw Rotors

2045A

SAM



The date code is on the body in the area of the spray reduction screw.

20 JL 10 = 20 July 2010

20 = Day of the month

JL = July

10 = Year (2010)

Follow these photographs to identify the position of the date code on commercial and residential sprays.

Code	JA	FE	MR	AP	MY	JN	JU	AU	SE	OC	NO	DE
Month	January	February	March	April	May	June	July	August	September	October	November	December

SPRAYS

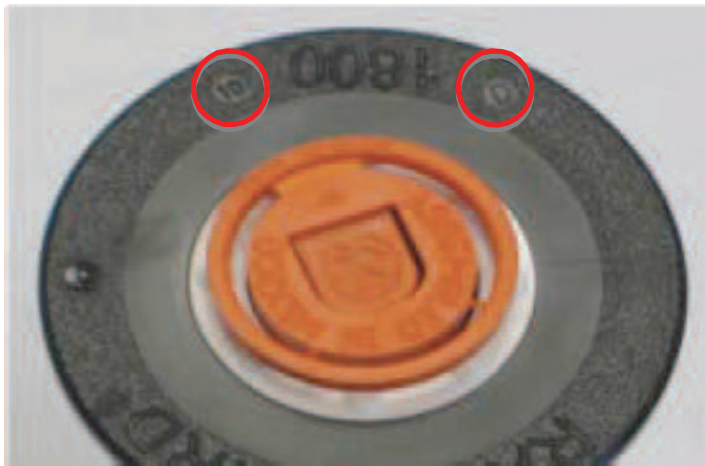
Models

Images

Date Code Interpretation

1804 Spray Body

Date code on the top of the cover.



D 10 = April-June 2010

D = Quarter
(2nd Quarter, Apr, May, Jun)

10 = Year (2010)

Quarter

A	1 st Qtr	Jan, Feb, Mar
D	2 nd Qtr	Apr, May, Jun
G	3 rd Qtr	Jul, Aug, Sep
K	4 th Qtr	Oct, Nov, Dec

1800 Commercial Spray

Date code on the rib at bottom of the case.



07 Jul 05 = 7 July 2005

07 = Day of the month

JL = July

05 = Year (2005)

Follow these photographs to identify the position of the date code on rotary nozzles.

Code	JA	FE	MR	AP	MY	JN	JU	AU	SE	OC	NO	DE
Month	January	February	March	April	May	June	July	August	September	October	November	December

ROTARY NOZZLES

Models	Images	Date Code Interpretation
--------	--------	--------------------------

R Series (Fixed Arc)

R17-24F
R13-18F



07MR12 = 7 March 2012

07 = Day of the month
MR = March
12 = Year (2012)

R-VAN (Adjustable Arc)

R-VAN 1724
R-VAN 1318
R-VAN14
R-VAN14-360
R-VAN18
R-VAN18-360
R-VAN24
R-VAN24-360
R-VAN-SST
R-VAN-LCS
R-VAN-RCS



10AU12 = 10 August 2012

10 = Day of the month
AU = August
12 = Year (2012)

Follow these photographs to identify the position of the date code on commercial and residential controllers.

Code	JA	FE	MR	AP	MY	JN	JU	AU	SE	OC	NO	DE
Month	January	February	March	April	May	June	July	August	September	October	November	December

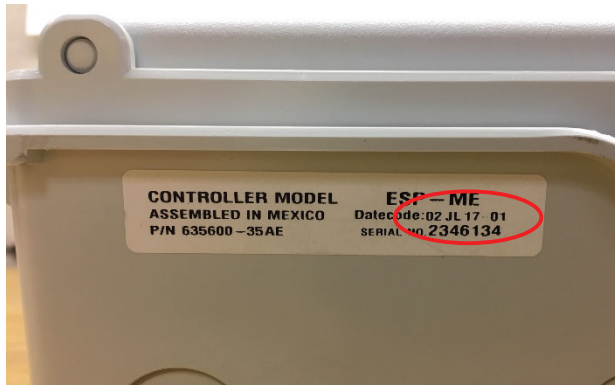
CONTROLLERS

Models

Images

Comments /Date Code Interpretation

ESP-Me Controller (External Case)



In general, Rain Bird controllers have a date code on the bottom of the external case (if they come mounted in one) and another date code on the back of the main panel.

In the case of direct wall-mount controllers, there is a single date code found on the back of the controller. The information on the date code tags are similar across all controllers.

IMPORTANT: Warranty is applied based on the oldest date code on the returned unit.

ESP-Me Controller (Front Panel)



07 JL 17 = 7 July 2017

07 = Day of the month

JL = July

17 = Year (2017)

Follow these photographs to identify the position of the date code on commercial and residential controllers.

Code	JA	FE	MR	AP	MY	JN	JU	AU	SE	OC	NO	DE
Month	January	February	March	April	May	June	July	August	September	October	November	December

CONTROLLERS

Models

Images

Comments/Date Code Interpretation

ESP-TM2 Controller



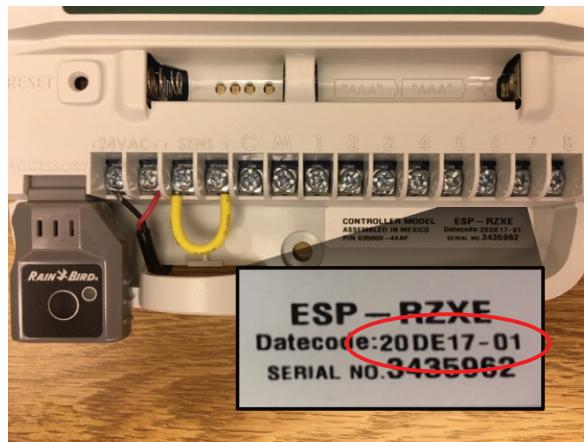
06 OC 16 = 6 October 2016

06 = Day of the month

OC = October

16 = Year (2016)

ESP-RZx Controller



20 DE 17 = 20 December 2017

20 = Day of the month

DE = December

17 = Year (2017)

Follow these photographs to identify the position of the date code on commercial and residential controllers.

Code	JA	FE	MR	AP	MY	JN	JU	AU	SE	OC	NO	DE
Month	January	February	March	April	May	June	July	August	September	October	November	December

CONTROLLERS

Models

Images

Comments/Date Code Interpretation

ESP-Modular Controller (External Case)

- ESP-4M IESP-
- 4MEU IESP-
- 4MCH IESP-
- 4MAUS
- IESP-4MROW



In general, Rain Bird controllers have a date code on the bottom of the external case (if they come mounted in one) and another date code on the back of the main panel.

In the case of direct wall-mount controllers, there is a single date code found on the back of the controller. The information on the date code tags are similar across all controllers.

IMPORTANT: Warranty is applied based on the oldest date code on the returned unit.

ESP-Modular Controller (Front Panel)

- ESP-4Mi
- ESP-4MI



03 DE 08 = 3 December 2008

03 = Day of the month

DE = December

08 = Year (2008)

Follow these photographs to identify the position of the date code on commercial and residential controllers.

Code	JA	FE	MR	AP	MY	JN	JU	AU	SE	OC	NO	DE
Month	January	February	March	April	May	June	July	August	September	October	November	December

CONTROLLERS

Models

Images

Comments/Date Code Interpretation

ESP-Modular Enhanced Controller (External Case for Outdoor Controller Shown)

- ESP-4Me
- ESP-4MeI
- IESP-4MeEUR
- IESP-4MeAUS
- IESP-4MeCSA
- IESP-4MeAMC



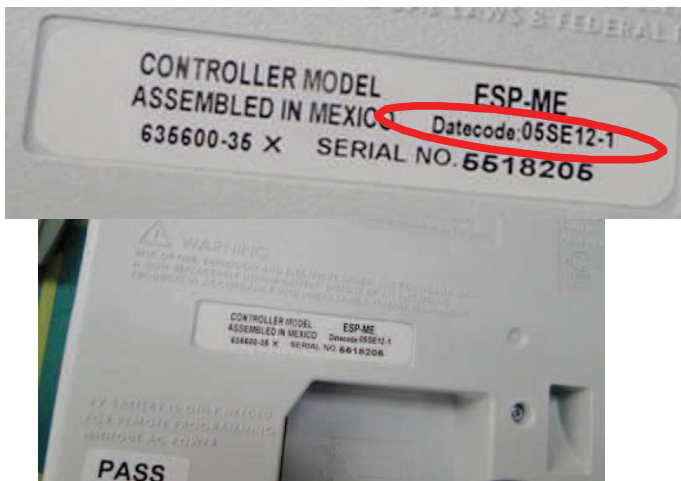
In general, Rain Bird controllers have a date code on the bottom of the external case (if they come mounted in one) and another date code on the back of the main panel.

In the case of direct wall-mount controllers, there is a single date code found on the back of the controller. The information on the date code tags are similar across all controllers.

IMPORTANT: Warranty is applied based on the oldest date code on the returned unit.

ESP-Modular Enhanced Controller (Front Panel)

- ESP-4MeI
- ESP-4Me



05 SE 12 = 5 September 2012

05 = Day of the month

SE = December

12 = Year (2012)

1 = Plant 1 (La Mesa)

Follow these photographs to identify the position of the date code on commercial and residential controllers.

Code	JA	FE	MR	AP	MY	JN	JU	AU	SE	OC	NO	DE
Month	January	February	March	April	May	June	July	August	September	October	November	December

CONTROLLERS

Models

Images

Date Code Interpretation

ESP-LX Modular

ESPLXM IESPLXM

IESPLXMAUS

IESPLXMEUR



Open



ESP-SMT Controller

ESP-SMT4i

Back of Controller

17 AU 10 = 17 August 2010

ESP-SMT4



17 = Day of the month

AU = August

10 = Year (2010)

Follow these photographs to identify the position of the date code on commercial and residential controllers.

Code	JA	FE	MR	AP	MY	JN	JU	AU	SE	OC	NO	DE
Month	January	February	March	April	May	June	July	August	September	October	November	December

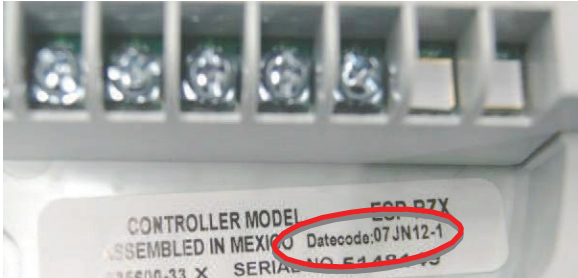
CONTROLLERS

Models **Images** **Date Code Interpretation**

STPi/Plus Controller

STP-400i	Back of Controller	19 OC 10 = 19 October 2010
STP-600i		19 = Day of the month
STP-900i		OC = October
ISTP-400IEU		10 = Year (2010)
ISTP-600IEU		
ISTP-900IEU		

ESP-RZX Controller

RZX4I-120V		07JN12-1
RZX4-120V		
RZX6I-120V		7 = Day of the month
RZX6-120V		JN = June
RZX8I-120V		12 = Year (2012)
RZX8-120V		1 = Plant 1 (La Mesa)

The station number of the controller is determined by where the screws end under the wiring cover.

Follow these photographs to identify the position of the date code on commercial and residential controllers.

Code	JA	FE	MR	AP	MY	JN	JU	AU	SE	OC	NO	DE
Month	January	February	March	April	May	June	July	August	September	October	November	December

CONTROLLERS

Models **Images** **Date Code Interpretation**

ESP-Modular Series 3-Station Module

ESPSM3

Date code label on the back side of the module



6 MY 11-1 = 6 May 2011

6 = Day of the month

MY = May

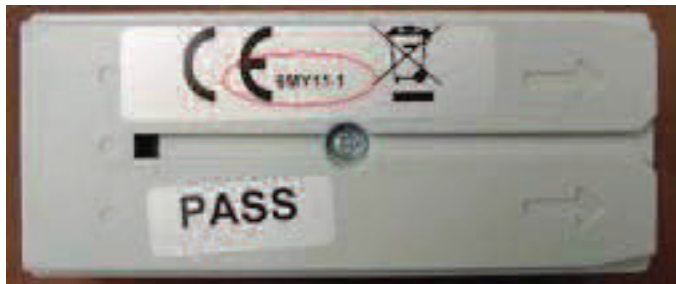
11 = Year (2011)

1 = Plant 1 (La Mesa)

ESP-Modular Series 6-Station Module

ESPSM6

Date code label on the back side of the module



6 MY 11-1 = 6 May 2011

6 = Day of the month

MY = May

11 = Year (2011)

1 = Plant 1 (La Mesa)

IQ46 Cartridge

IQ4613

IQ4613B

IQ4613C

IQ4613D

IQ4613E



16 FE 16-01

16 = Day of the month

FE = February

16 = Year (2016)

Follow these photographs to identify the position of the date code on commercial and residential controllers.

Code	JA	FE	MR	AP	MY	JN	JU	AU	SE	OC	NO	DE
Month	January	February	March	April	May	June	July	August	September	October	November	December

CONTROLLERS

Models

Images

Date Code Interpretation

TBOS-BT



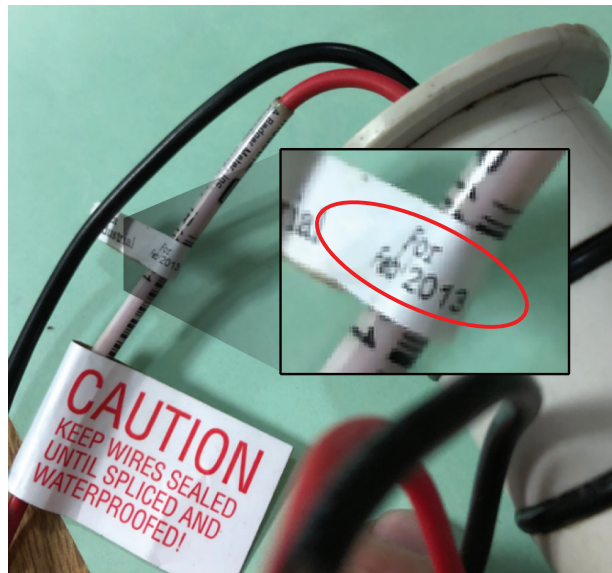
02 JL 17 = 2 July 2017

2 = Day of the month

JL = July

17 = Year (2017)

Flow Sensors



Feb. 2013 = February 2013

Feb. = Month

2013 = Year (2011)

Follow these photographs to identify the position of the date code on landscape drip products.

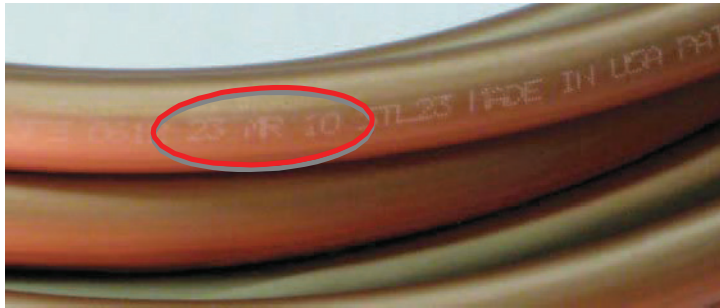
Code	JA	FE	MR	AP	MY	JN	JU	AU	SE	OC	NO	DE
Month	January	February	March	April	May	June	July	August	September	October	November	December

LANDSCAPE DRIP

Models **Images** **Date Code Interpretation**

Landscape Dripline

XF Series
XT-700
XBS Series



23 MR 10 = 23 March 2010

23 = Day of the month
MR = March
10 = Year (2010)

RBY Filters

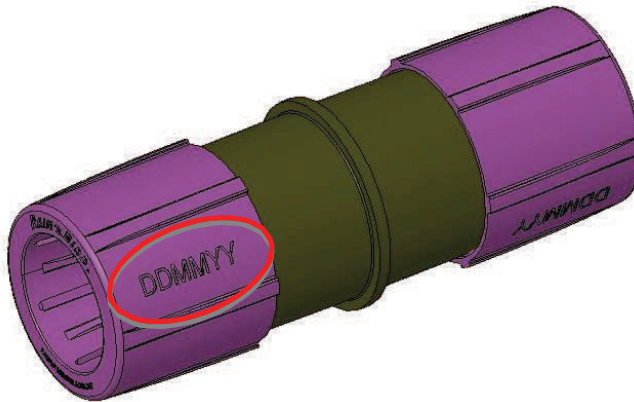


07 AP 11 = 7 April 2011

07 = Day of the month
AP = April
11 = Year (2011)

Easy Fit Compression Fitting

MDC Fitting



DD = Day of the month
MM = Month
YY = Year

Please reference the table for the month coding.

Code	JA	FE	MR	AP	MY	JN	JU	AU	SE	OC	NO	DE
Month	January	February	March	April	May	June	July	August	September	October	November	December

LND CONTROL ZONE KITS

Note: For all Control Zone Kits, the date code is shown on the valve

Models	Images	Date Code Interpretation
CZK Residential Control Zone Kits (DV valve)		
<p>XCZ100PRF</p>		<p>23 JN 10 D = 23 June 2010</p> <p>23 = Day of the month JN = June 10 = Year (2010) D = Product Line D (important when reporting a failure)</p> <p>Note: Control Zone Kits date code are located on the valve</p>
CZK Residential Control Zone Kits (LFV valve)		
<p>XACZ-075-PRF XCZ-075-PRF XCZLF-100PRF</p>		<p>22 MR 11 = 22 March 2011</p> <p>22 = Day of the month MR = March 10 = Year (2011)</p> <p>Note: Control Zone Kits date code are located on the valve</p>

Please reference the table for the month coding.

Code	JA	FE	MR	AP	MY	JN	JU	AU	SE	OC	NO	DE
Month	January	February	March	April	May	June	July	August	September	October	November	December

Models

Images

Date Code Interpretation

CZK Residential Control Zone Kit (PGA valve)

XCZPGA100PRF



05 FE 17A = 05 February 2017

05 = Day of the month

FE = February

17 = Year (2017)

A = Production Line A

(important when reporting a failure)

Note: Control Zone Kits date code are located on the valve

CZK Commercial Control Zone Kit (1" PEB/PESB/PESBR valve)

XCZ100PRBCOM

XCZ100PRBLC

XCZ100PRBR



11 MY 16A = 11 May 2016

11 = Day of the month

MY = May

16 = Year (2016)

A = Production Line A

(important when reporting a failure)

Note: Control Zone Kits date code are located on the valve

Please reference the table for the month coding.

Code	JA	FE	MR	AP	MY	JN	JU	AU	SE	OC	NO	DE
Month	January	February	March	April	May	June	July	August	September	October	November	December

Models

Images

Date Code Interpretation

CZK Residential Control Zone Kit (1.5" PEB valve)

XCZ150LCS

XCZ150PRBCOM

XCZ150LCR



24 AP 17B = 24 April 2017

24 = Day of the month

AP = April

17 = Year (2017)

B = Production Line B

(important when reporting a failure)

Note: Control Zone Kits date code are located on the valve

Please reference the table for the month coding.

Code	JA	FE	MR	AP	MY	JN	JU	AU	SE	OC	NO	DE
Month	January	February	March	April	May	June	July	August	September	October	November	December

LND PRESSURE REGULATORS

Models

Images

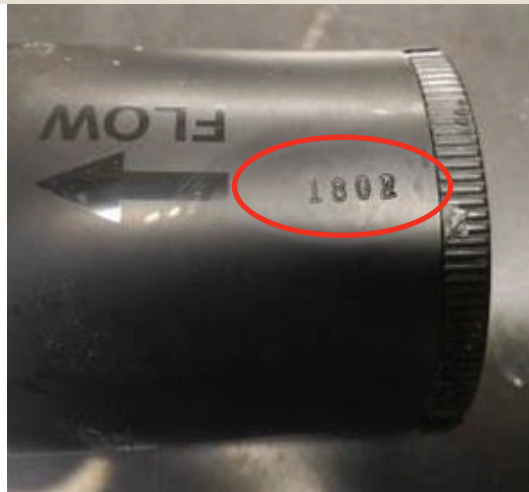
Date Code Interpretation

PSI - Inline Pressure Regulators

PSIH40X100

PSIH50X100

PSIH40X150



1802 = February 2018

18 = Year (2018)

02 = Month (February)

PSI - Inline Pressure Regulators

PSIL30X075

PSIM30X075

PSIM40X075



29MR17 = 29 March 2017

29 = Day of the month

MR = March

17 = Year (2017)

Please reference the table for the month coding.

Code	JA	FE	MR	AP	MY	JN	JU	AU	SE	OC	NO	DE
Month	January	February	March	April	May	June	July	August	September	October	November	December

LND PRESSURE REGULATORS

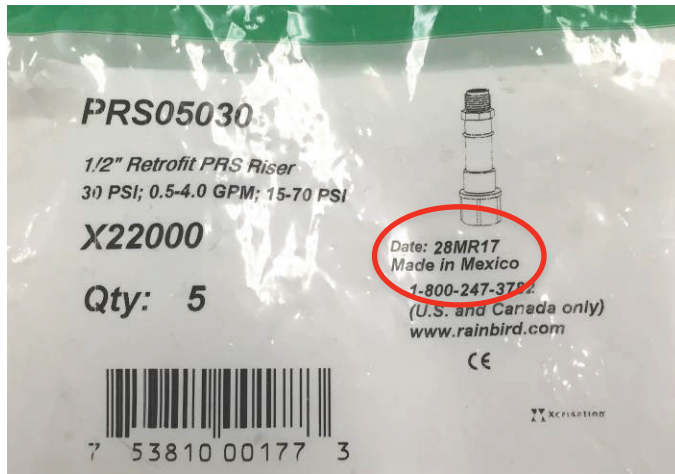
Models

Images

Date Code Interpretation

PRS - Retrofit Pressure Regulators

PRS05030



28MR17 = 28 March 2017

28 = Day of the month

MR = Month (March)

17 = Year (2017)

Please reference the table for the month coding.

Code	JA	FE	MR	AP	MY	JN	JU	AU	SE	OC	NO	DE
Month	January	February	March	April	May	June	July	August	September	October	November	December

LND FILTERS

Models

Images

Date Code Interpretation

RBY - Pressure Regulator/Filter

PRF075RBY
 PRF100RBY
 RBY075MPTX
 RBY100MPTX



02DE14 = 02 December 2014

02 = Day of the month

DE = December

14 = Year (2014)

Basket Filters

QKCHK100
 PRB100
 PRBQKCHK100



10 JN 16A = 10 June 2016

10 = Day of the month

JN = June

16 = Year (2016)

A = Assembly Line

(important when reporting a failure)

Please reference the table for the month coding.

Code	JA	FE	MR	AP	MY	JN	JU	AU	SE	OC	NO	DE
Month	January	February	March	April	May	June	July	August	September	October	November	December

LND FILTERS

Models

Images

Date Code Interpretation

LCRBY - Large Capacity Filters

- LCRBY100D
- LCRBY150S
- LCRBY150D
- LCRBY200S
- LCRBY200D



11 FE 14 = 11 February 2014

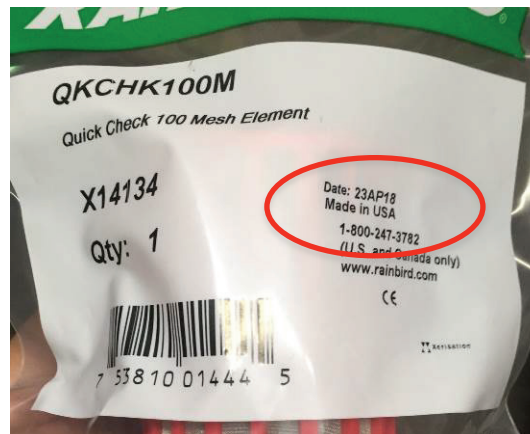
11 = Day of the month

FE = February

14 = Year (2014)

RBV & Basket Filter Replacement Filters

- QKCHK100M
- QKCHK200M
- RBV200SSMX



23 AP 18 = 23 April 2018

23= Day of the month

AP = April

18 = Year (2018)

Please reference the table for the month coding.

Code	JA	FE	MR	AP	MY	JN	JU	AU	SE	OC	NO	DE
Month	January	February	March	April	May	June	July	August	September	October	November	December

LND EMISSION DEVICES

Note: For all Emission Devices: Xeri-Bug Emitters, PC Emitters, Xeri-Bird, Xeri-Pop, Multi-Outlet Emitters, Microsprays, Misters, Bubblers, Stakes, Risers, and other accessories.

The date code is on the bag/packaging or box label. Below are some examples.

Models	Images	Date Code Interpretation
XB - Xeri-Bugs Emitters		
XB05PC		28 DE 17 = 28 December 2017
XB10PC		28 = Day of the month
XB20PC		DE = December
XB05PCBULK		17 = Year (2017)
XB10PCBULK		
XB20PCBULK		
XB05MAXPAK		
XB10MAXPAK		
XB20MAXPAK		
XB05PC1032		
XB10PC1032		
XB20PC1032		

PC – Pressure Compensating Emitters		
PC05		31 JA 11 = 31 January 2011
PC07		31 = Day of the month
PC10		JA = January
PC12		11 = Year (2011)
PC18		
PC24		
PC051032		
PC071032		
PC101032		

Please reference the table for the month coding.

Code	JA	FE	MR	AP	MY	JN	JU	AU	SE	OC	NO	DE
Month	January	February	March	April	May	June	July	August	September	October	November	December

Models

Images

Date Code Interpretation

EMT - 6 Outlet Emitter

EMT6XERI



18 MR 14 = 18 March 2014

18 = Day of the month

MR = March

14 = Year (2014)

XBT - Xeri-Bug Multi-Outlet Emitter

XBT056

XBT106

XBT206



17 AP 12 = 17 April 2012

17 = Day of the month

AP = April

13 = Year (2013)

Please reference the table for the month coding.

Code	JA	FE	MR	AP	MY	JN	JU	AU	SE	OC	NO	DE
Month	January	February	March	April	May	June	July	August	September	October	November	December

Models

Images

Date Code Interpretation

PFR - Poly Flex Riser

PFR12
PFRFRA
PFRFRA24
PFRRS



27OC18 = 27 October 2018

27 = Day of the month
OC = October
18 = Year (2018)

XMTOOL – Xeriman Tool

XMTOOL



15AU18 = 15 August 2018

15 = Day of the month
AU = August
18 = Year (2018)


Please reference the table for the month coding.

Code	JA	FE	MR	AP	MY	JN	JU	AU	SE	OC	NO	DE
Month	January	February	March	April	May	June	July	August	September	October	November	December

LND FITTINGS

Note: For all Fittings: Insert Fittings, Twist Lock Fittings, Easy Fit Compression Fittings, 1/4" Connectors, and accessories.

The date code is on the bag or packaging. Below are some examples.

Models	Images	Date Code Interpretation
XF - Fittings		
<p>XFFCOUP</p> <p>XFFELBOW</p> <p>XFFMA050</p> <p>XFFTEE</p> <p>XFFTMA050</p> <p>XFFMA075</p> <p>XFFFA050</p> <p>XFFTFA050</p> <p>XFDCROSS</p> <p>XFDTFA</p>		<p>22 SE 11 = 22 September 2011</p> <p>22 = Day of the month</p> <p>SE = September</p> <p>11 = Year (2011)</p>
		<p>30OC18 = 30 October 2018</p> <p>30 = Day of the month</p> <p>OC = October</p> <p>18 = Year (2018)</p>

Please reference the table for the month coding.

Code	JA	FE	MR	AP	MY	JN	JU	AU	SE	OC	NO	DE
Month	January	February	March	April	May	June	July	August	September	October	November	December

Models

Images

Date Code Interpretation

1800RETRO – Retro Fit Kit

1800RETRO



12 MY 16 = 12 MAY 2016

12 = Day of the month

MY = May

16 = Year (2016)

Please reference the table for the month coding.

Code	JA	FE	MR	AP	MY	JN	JU	AU	SE	OC	NO	DE
Month	January	February	March	April	May	June	July	August	September	October	November	December

Models

Images

Date Code Interpretation

TDS – Tie Down Stakes

TDS6050



01/18 = January 2018

01 = Day of the month

JA = January

18 = Year (2018)

TDS – Tie Down Stakes

TDS6500



01 JA 19 = 01 January 2019

01 = Day of the month

JA = January

19 = Year (2019)

Note: Date code on a small white sticker on the pail. Not on the main label.

Please reference the table for the month coding.

Code	JA	FE	MR	AP	MY	JN	JU	AU	SE	OC	NO	DE
Month	January	February	March	April	May	June	July	August	September	October	November	December

LND WATERING DEVICES

Note: For all Root Watering Systems, the date code is on the box label.

Models

Images

Date Code Interpretation

RWS – Root Watering Systems

RWS

RWSBC1401

RWSB1401

RWSBX1401

RWSBC1402

RWSB1402

RWSBC1404

RWSM

RWSMBC1401

RWSMB1401

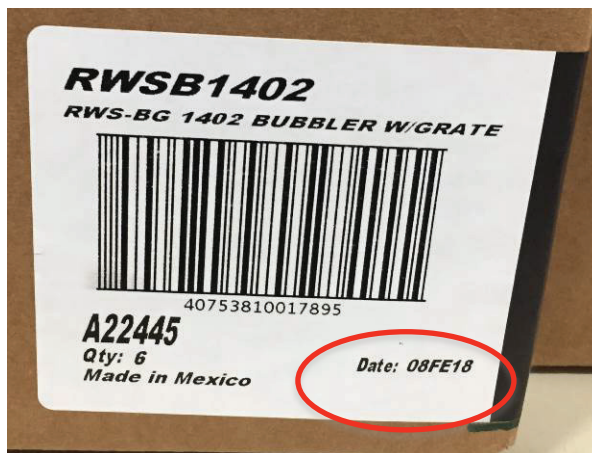
RWSMBC1402

RWSMB1402

RWSSBCPCT5

RWSBC1401

RWSSB1401



08 FE 18 = 08 February 2018

08 = Day of the month

FE = February

18 = Year (2018)



Follow these photographs to identify the position of the date code on these accessories.

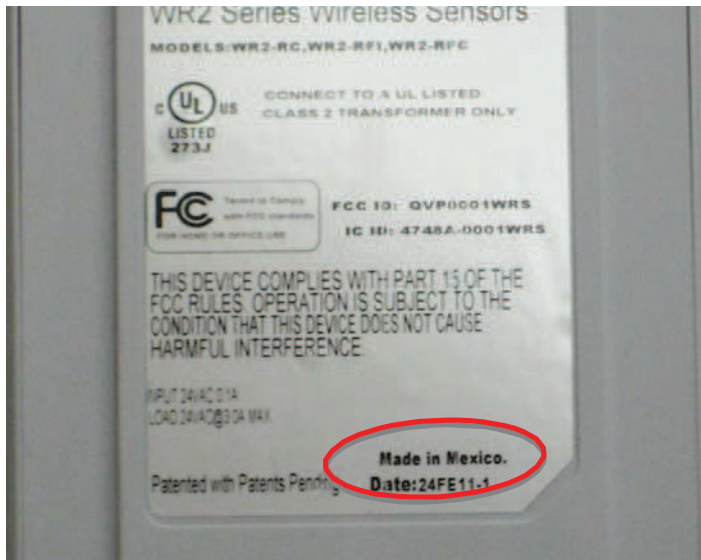
Code	JA	FE	MR	AP	MY	JN	JU	AU	SE	OC	NO	DE
Month	January	February	March	April	May	June	July	August	September	October	November	December

ACCESSORIES

Models **Images** **Date Code Interpretation**

Wireless Rain Sensor

WR-2



24 FE 11-1 = 24 February 2011

24 = Day of the month

FE = February

11 = Year (2011)

Rain Sensor

RSD-BEX



09 JL 10-1 = 9 July 2010

09 = Day of the month

JL = July

10 = Year (2010)

Follow these photographs to identify the position of the date code on these accessories.

Code	JA	FE	MR	AP	MY	JN	JU	AU	SE	OC	NO	DE
Month	January	February	March	April	May	June	July	August	September	October	November	December

ACCESSORIES

Models **Images** **Date Code Interpretation**

Soil Sensor

SMRT-Y



25 JN 09 = 25 June 2009

25 = Day of the month

JN = June

09 = Year (2009)

Valve Boxes

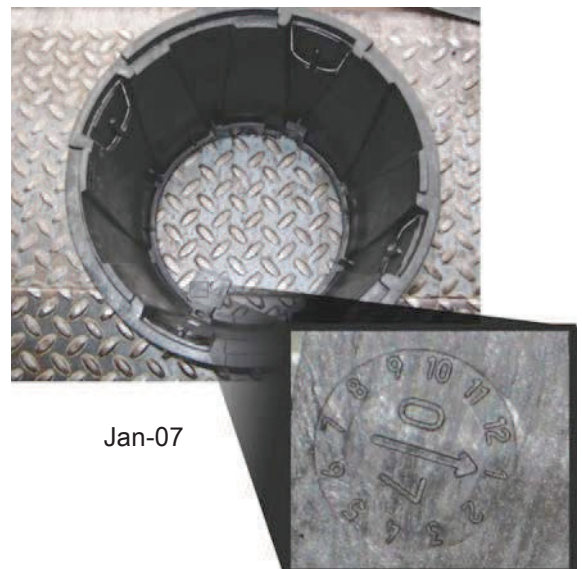
All Boxes and Lids

Date code stamped on inside of lids and boxes using a clock-like stamp.

The arrow points to a number representing the month (1-12) and the last two digits of the year are in the center of the clock.



Mar-04



Jan-07