

Wasp

Mud Dauber



Poisonous Bug Bites and Stings



County of San Bernardino Department of Public Health
DIVISION OF ENVIRONMENTAL HEALTH SERVICES

VECTOR CONTROL PROGRAM
(909) 388-4600

Visit our web site: www.sbcounty.gov/dehs



County of San Bernardino Department of Public Health
DIVISION OF ENVIRONMENTAL HEALTH SERVICES

Ants

REACTIONS



IMMEDIATE

Fierce burning pain lasting minutes

LOCAL

(fire ants)

Minutes - Wheal formation

- 2-4 hours - Clear fluid-filled vesicles
- 8-10 hours - Cloudy fluid-filled vesicles
- 12-24 hours - Umbilicated pustules on a red base, with pain and tenderness
- 3-8 days - Lesions resolve; may leave scars

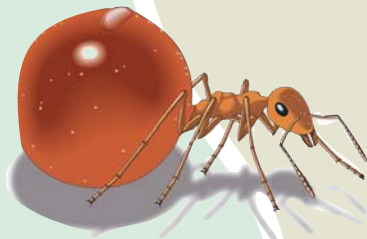
SYSTEMIC

Due to allergic sensitization; severity and speed of onset related to degree of sensitivity. May see wheezing, urticaria, abdominal cramps, generalized edema, nausea, vomiting, dizziness, confusion, shock

ANAPHYLAXIS AND DEATHS

Rare, but reported

Honey Ant



TREATMENT



LOCAL

- Wash sites with soap and water
- Apply ice packs or cold compresses
- Apply baking soda and water paste

SYSTEMIC

See physician for proper treatment



Red Ant

Black Widow Spider

REACTIONS



IMMEDIATE

Pinprick sensation from bite

LOCAL

Dull, numbing pain; two red puncture marks at bite site. Pain peaks at 1-3 hours and persists 12-48 hours

REGIONAL

- Severe muscle pain and spasm
- Rigid board-like abdomen
- Tightness in chest and pain on inspiration

GENERAL

- Rigidity and spasm of all large muscle groups; excruciating abdominal pain
- Convulsions, paralysis
- Shock

DEATHS

4-5% of untreated cases due to neurotoxic effect of venom

TREATMENT



LOCAL FIRST AID

Ineffective and unnecessary

SYSTEMIC

See physician for proper treatment



Black Widow Spider

Centipedes

REACTIONS



IMMEDIATE

Pain, often intense

LOCAL

1-4 hours - A two-puncture wound at the site with redness, swelling and a burning, aching pain that subsides in 4-5 hours

REGIONAL

Rare - Purpura of an entire limb

ANAPHYLAXIS AND DEATH

None reported in the United States



Centipede

TREATMENT



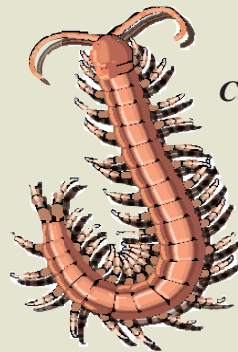
LOCAL FIRST AID

Wash with soap and water
Apply ammonia in 10% solution

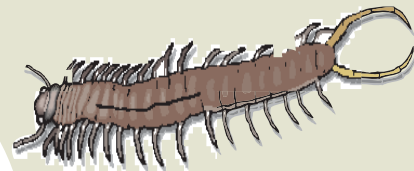
Apply cool, wet dressings of a saturated magnesium sulfate solution

SYSTEMIC

Analgesics for pain



Centipede



Centipede

Scorpions

REACTIONS



IMMEDIATE

Severe sharp pain

LOCAL

- Dangerous neurotoxic species - Pins-and-needles sensation with **no** local swelling or discoloration (*found in Arizona only*)
- Comparatively harmless species (not neurotoxic) - Local swelling and discoloration at sting site

SYSTEMIC

- Neurotoxic species only - within 1-3 hours
- Hypoesthesia and numbness or drowsiness
 - Itching of nose and throat
 - Impaired speech and tightness of jaw muscles
 - Restlessness and muscle twitching
 - Muscle spasm with pain, nausea, vomiting, incontinence, convulsions
 - Respiratory and/or circulatory distress

ANAPHYLAXIS

Rare, but reported with nonneurotoxic species

DEATHS

Occasional; due to neurotoxic species

TREATMENT



LOCAL FIRST AID

- Apply ice packs
- Apply tourniquet if possible and as near sting site as possible. Loosen briefly every 10-15 minutes

WARNING: Do not use morphine or opiates since they increase toxic effects

SYSTEMIC

See physician for proper treatment



Scorpion

Brown Recluse Spider

REACTIONS



IMMEDIATE

Very little pain, if any

LOCAL

- 2-8 hours - Mild to severe pain with redness and vesiculation at bite site, followed by ischemia
- 3-4 days - Star-shaped firm area of deep-purple color with necrosis
- 7-14 days - Central area of depression and ulceration
- 21 days - Healing and scar formation. May not heal sufficiently and may require skin grafting

SYSTEMIC

- * Fever, chills, nausea, vomiting, weakness, joint pain
- * Morbilliform or petechial generalized eruption
- * Occasionally serious hematological disturbances - hemolytic anemia, thrombocytopenia

DEATHS

Reported; usually in children, due to renal failure and hematological abnormalities

TREATMENT



LOCAL FIRST AID

Ineffective and unnecessary

SYSTEMIC

See physician for proper treatment



Brown Recluse Spider

Urticating Caterpillars

REACTIONS



IMMEDIATE

Severe burning pain

LOCAL

- Numbness and swelling of area inflicted with severe radiating pain
- Possible double row of parallel red puncture marks forming a grid-like tract along the path of the caterpillar
- Swelling of regional lymph glands
- Late foreign-body reaction to unremoved spines

SYSTEMIC

- Nausea, vomiting, fever
- Headaches.
- Shock and convulsions (*rare*)

DEATHS

None reported

TREATMENT

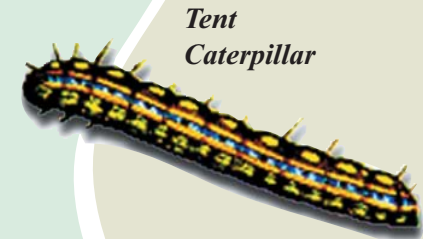


LOCAL FIRST AID

- Repeated stripping using adhesive or cellophane tape to remove spines
- Apply ice packs
- Apply baking soda-and-water paste

SYSTEMIC

See physician for proper treatment



Tent Caterpillar

Ticks*

REACTIONS



IMMEDIATE

Mild itch to severe allergic reaction

LOCAL

- Red swelling at point of bite
- Potentially fatal from tick paralysis
- Numbness of lower limbs, continuing to upper body regions within hours

SYSTEMIC

- Tick granuloma (tumor) may occur days or months after bite

DEATHS

Rare

TREATMENT



LOCAL FIRST AID

- Remove tick by grasping the mouthparts close to the attachment point with forceps or tweezers and slowly removing the tick.
- Apply ice pack

SYSTEMIC

See physician for treatment of these symptoms of diseases transmitted by ticks



**Seven (7) species occur within our local area*

True Bugs

REACTIONS



IMMEDIATE

Usually no sensation, occasionally mild pain

LOCAL

Four distinct reactions depending on degree of sensitivity

- Papule with a central punctum
- Small vesicles grouped around bite site with swelling and little redness
- Giant urticarial lesion with central punctum and surrounding brawny edema on hands and feet — the characteristic “kissing bug bites”

ANAPHYLACTIC SHOCK

Rare, but reported

DEATHS

None reported

TREATMENT



LOCAL

Wash with soap and water

SYSTEMIC

Oral antihistamines



Assassin bug



Bed bug

Bees and Wasps

REACTIONS



IMMEDIATE

Pain

LOCAL

Within 1-4 hours – Appearance and subsidence of wheal and red flare; may see intense local swelling in region of sting

SYSTEMIC

- Mild reaction – Generalized urticaria, itching, malaise, anxiety
- Moderate reaction – Any of the above plus generalized edema, tightness in the chest, wheezing, abdominal pain, nausea, vomiting, dizziness
- Severe reaction – Any of the above plus labored breathing, difficulty in swallowing, hoarseness or thickened speech, marked weakness, confusion, feeling of impending disaster
- Shock – Cyanosis, fall in blood pressure, collapse, incontinence, unconsciousness
- Delayed serum-sickness-like reaction (10-14 days after sting) – Fever, lymphadenopathy, malaise, headache, urticaria, polyarthritis, renal dysfunction

ANAPHYLAXIS AND SUDDEN DEATH

Many cases reported, usually in adults

TREATMENT



LOCAL FIRST AID

- Remove bee stinger from sting site by gently scraping with a fingernail, blade, or credit card to prevent further venom injection from attached venom sac (wasp does not lose its stinger and can sting more than once)
- Wash site with mild soap and water
- Apply ice packs or 10% ammonia solution
- Apply water and baking soda paste
- Elevate and rest involved limb

SYSTEMIC

See physician for proper treatment

LONG-TERM MANAGEMENT

- Medic-alert tag or badge
- Emergency treatment kit and instructions for use
- Program for desensitization



Honey Bee



Yellow jacket