



Water Quality Sampling

FIELD & LABORATORY INSTRUMENTATION



a xylem brand

Our customers use YSI instruments to make a positive impact around the world.

Table of Contents

| | |
|--------------|---------------------------------|
| 1 | Media |
| 2-3 | Professional Plus |
| 4-5 | ProODO |
| 6 | Pro2030 |
| 7 | Pro1020/1030 |
| 8 | Pro20 & Pro30 |
| 9 | Professional Series Accessories |
| 10 | 556 |
| 11 | Classics |
| 12 | 4010-2 & 4010-3 |
| 13 | 4010-1 & IDS |
| 14 | 5100/5000 |
| 15 | pH1200 & 3200/3100 |
| 16-17 | EcoSense |
| 18-19 | Colorimeters |
| 20 | Calibration Solutions |
| 21 | Colorimetry Reagents |

We help you meet your critical water testing requirements with superior sensor technology and the most extensive distribution and support network in the industry.

Financial advantages include the low overall cost of ownership of YSI products due to their quality engineering, infrequent down time and repairs, and affordable parts.

Yet the number one advantage in working with YSI is direct access to our employees - knowledgeable, customer-focused technical and applications advisors committed to helping you find new and better ways to use YSI equipment.

Thank you for your interest in our company. I encourage you to contact me directly if you have any comments or feedback in regard to our products, suggestions, or service. We value your input. Together we can protect our planet's most valuable natural resource.



Tim Grooms, tgrooms@ysi.com
Director, Water Quality Products



Media

VIDEO SPEC SHEETS

bit.ly/Pro20DO

bit.ly/Pro30

bit.ly/Pro1030

bit.ly/Pro2030

bit.ly/ProODO

bit.ly/YSIProPlus

bit.ly/MultiLab

RESOURCES

bit.ly/Pro20Cal (simple calibration routine video)

bit.ly/DOguide (Dissolved Oxygen Handbook)

bit.ly/DataMan (Data Manager software video)

bit.ly/IUseYSI (customers using YSI video)

bit.ly/DOCap (changing a DO cap membrane)

ysi.com/webinars (upcoming and recorded webinars)



Subscribe to the YSI blog

<http://blog.ysi.com>

Connect with YSI:



Facebook

facebook.com/myYSI



Twitter

twitter.com/ysiinc



Scoop.it

scoop.it/water-quality



LinkedIn

linkedin.com/company/ysi



YouTube

youtube.com/ysiinc



Tumblr

mysi.tumblr.com



Pinterest

pinterest.com/myYSI

Professional Plus

The YSI Pro Plus accommodates any combination of Pro Series sensor (parameter) and cable (parameter combination and length). This compact handheld includes simple calibrations, detailed GLP data, screen-specific Help instructions, auto-buffer recognition, mil-spec connectors, re-cal prompts, auto-stable indicators, and security passwords to help make your job easier in the field or lab. Finally, a true professional instrument for the water professional.



Tougher

- Rubber, over-molded IP67 waterproof case (even without battery cover)
- 3-year instrument warranty
- 2-year cable warranty
- Rugged cables, sensors, and military-spec connectors
- Drop-tested 1 meter at all angles
- Scratch-resistant lens; viewable with polarized glasses
- Instrument floats
- Backlit display and keypad



Quatro Cable (605790)

This multiparameter cable allows the measurement of temperature, conductivity, salinity, dissolved oxygen, and any two ISEs - pH, ORP, ammonium/ammonia, nitrate, or chloride. Flow cell compatible.



 [ysi.com/proplus](https://www.ysi.com/proplus)



- Parameters**
- Temperature
 - Conductivity/ Specific conductance
 - Salinity
 - TDS
 - Dissolved oxygen (electrochemical)
 - pH
 - ORP
 - BOD (electrochemical)
 - Ammonium/Ammonia
 - Chloride
 - Nitrate

Smarter

- 5,000 data sets in manual mode; up to 50,000 in continuous mode (depending on number of parameters)
- Search function filters user-defined data
- Interval or single-event logging
- 100 folder & site list data structure
- Detailed GLP data
- USB connection powers the instrument
- Auto-buffer recognition; up to 6-point cal
- Compatible with BOD Analyst Pro software



Free Data Manager Software

- Easy-to-use software to manage all your data studies
- View, print, and export graphical and tabular data
- View and print GLP data
- Quickly configure just one or multiple instruments
- Conduct real-time studies



Optional BOD Analyst Pro® Software

Automatically calculate BOD/CBOD values by directly connecting to the Pro Plus instrument. Set up samples, groups and more regardless of the seeding method or number of dilutions to instantly build batches. Report BOD data accurately and efficiently.

Cable options for lab



Cable options for field



Single port cable
60510 - ISE
60520 - DO
60530 - Cond



Single port cable with conductivity
6051030 - ISE/Cond
6052030 - DO/Cond



Dual port cable
6051010 - ISE/ISE
6051020 - ISE/DO



4-port cable
605790 - ISE/ISE/DO/Cond

Self-stirring BOD
Lab grade ISE
605780 - BOD
605107 - pH
605108 - ORP
605109 - pH/ORP

Order instrument, cables, and sensors separately (kits also available).

ProODO®

The ProODO® is the best handheld optical dissolved oxygen instrument on the market. Its combination of versatility, field-worthy durability, and data management are second to none. The ProODO's rugged design is verified with an IP67 waterproof rating (even without the battery cover); mil-spec connectors; and rigorous drop, cable flex, and strength tests. The feature set in this instrument is so extensive, we encourage you to visit ysi.com/proODO or contact us to learn more.



Tougher

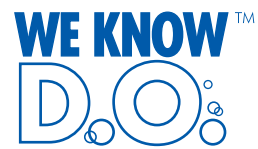
- Optical, luminescent technology eliminates membranes
- Rubber, over-molded IP67 waterproof case (even without battery cover)
- Low maintenance - no anode or cathode
- No flow requirement and no interference from hydrogen sulfide or other gases
- 3-year instrument warranty
- 2-year cable and probe warranty
- Drop-tested 1 meter at all angles
- Rugged cables and military-spec connectors



Optical technology eliminates stirring and interferences while reducing the need for calibration and maintenance - saving time and money.



ysi.com/proODO



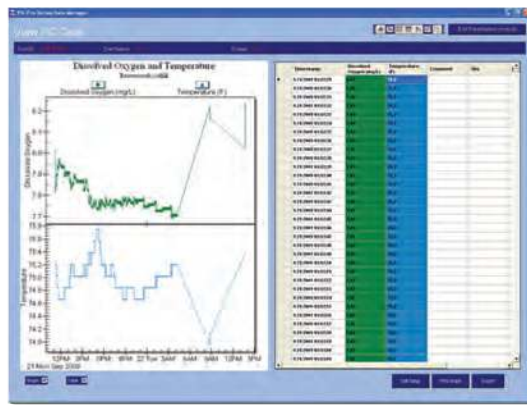
Parameters
 Temperature
 Dissolved oxygen (optical)
 BOD (optical)



Smarter

- 5,000 data sets in manual mode; up to 50,000 in continuous mode
- Expanded DO range of 0-500%; 0-50 mg/L
- Fastest response times available
- 100 folder & site list data structure
- USB connection powers the instrument
- Interval or single-event logging
- Unique, protective probe guard
- Extremely quiet stirrer

Probe guard on the optical BOD sensor protects sensing element from damage.



Free Data Manager Software

- Easy-to-use software to manage all your data studies
- View, print, and export graphical and tabular data
- View and print GLP data
- Quickly configure just one or multiple instruments
- Conduct real-time studies



Optional BOD Analyst Pro® Software

Automatically calculate BOD/CBOD values by directly connecting to the ProODO instrument. Set up samples, groups and more regardless of the seeding method or number of dilutions to instantly build batches. Report BOD data accurately and efficiently.

Pro2030

Pro2030 Parameters

Temperature
Dissolved oxygen
(electrochemical)
Conductivity/
Specific conductance
Salinity
TDS



Cable dimensions:
Standard cable lengths
of 1-, 4-, 10-, 20-, or
30-meters

Sensor dimensions:
h- 6.91" or 17.6 cm
od- 0.97" or 2.5 cm

The YSI Pro2030 dissolved oxygen/conductivity instrument provides DO readings automatically compensated for changes in salinity. The internal barometer, Quick Cal feature, and simple interface make getting accurate data extremely simple.

Pro2030

- Proven, super-stable conductivity electrode
- 3-year instrument warranty; 2-year cable
- Quick Cal allows calibrations within seconds
- 50 data-set memory ensures data integrity
- Graphic, backlit display and glow-in-the-dark keypad
- Choose either Galvanic or Polarographic DO sensors
- Quickest response times, PE cap membranes
- IP67 waterproof rating
- Languages - English, Spanish, French, German

 [ysi.com/pro2030](https://www.ysi.com/pro2030)

Pro1020/1030

Pro 1020 Parameters

Temperature
Dissolved oxygen
(electrochemical)
pH or ORP

Pro 1030 Parameters

Temperature
Conductivity/
Specific conductance
Salinity
TDS
pH or ORP

Both the YSI Pro1020 and Pro1030 instruments provide the ability to measure either pH or ORP in conjunction with either DO or conductivity. Each instrument will provide years of rugged, accurate, and reliable field sampling.



Cable dimensions:
Standard cable lengths
of 1-, 4-, 10-, 20-, or
30-meters

Sensor dimensions:
h- 6.91" or 17.6 cm
od- 1.63" or 4.1 cm

Both products share:

- IP67 waterproof rating
- 3-year instrument warranty; 2-year cable
- Quick Cal allows calibrations within minutes
- 50 data-set memory ensures data integrity
- Graphic, backlit display and glow-in-the-dark keypad
- Languages - English, Spanish, French, German

Pro1020

- Choose either Galvanic or Polarographic DO sensors
- Quickest response times, PE cap membranes
- Auto-buffer recognition for pH

Pro1030

- Proven, super-stable conductivity electrode
- Auto-buffer recognition for pH



Cable dimensions:
Standard cable lengths
of 1-, 4-, 10-, 20-, or
30-meters

Sensor dimensions:
h- 6.91" or 17.6 cm
od- 0.97" or 2.5 cm

 ysi.com/pro1020
ysi.com/pro1030

Pro20

The YSI Pro20 dissolved oxygen instrument fits the need for a true combined lab and field meter that's simple, easy-to-use, and rugged. Measure DO in the field with the rugged handheld and conduct lab tests with the self-stirring BOD probe within minutes.

- 3-year instrument warranty; 2-year cable
- One Touch Cal allows calibrations within 3 seconds
- 50 data-set memory ensures data integrity
- Graphic, backlit display, and glow-in-the-dark keypad
- Choose either Galvanic or Polarographic DO sensors
- Quickest response times; easy to change PE cap membranes
- Languages - English, Spanish, French, German
- Internal barometer
- Combination lab BOD or field DO



Pro20 Parameters

Temperature
Dissolved oxygen
(electrochemical)
BOD
(electrochemical)

? ysi.com/pro20
ysi.com/pro30

Cable dimensions:
Standard cable lengths
of 1-, 4-, 10-, 20-, 30, or
100-meters

Sensor dimensions:
h- 6.91" or 17.6 cm
od- 5.76" or 14.6 cm



Pro30

The YSI Pro30 conductivity instrument fits the need for an accurate, easy-to-use conductivity, specific conductance, and salinity instrument.

- 3-year instrument warranty; 2-year cable and sensor
- 50 data-set memory ensures data integrity
- Graphic, backlit display and glow-in-the-dark keypad
- Proven, super-stable conductivity cell built into the cable
- Quick Cal recalls previous cal values
- Languages - English, Spanish, French, German

Pro 30 Parameters

Temperature
Conductivity/
Specific conductance
Salinity
TDS

Cable dimensions:
Standard cable lengths
of 1-, 4-, 10-, 20-, or
30-meters

Sensor dimensions:
h- 6.91" or 17.6 cm
od- 5.31" or 13.48 cm



Professional Series Accessories

603059: Flow Cell, Standard, 203 mL

603077: Flow Cell Kit, 1- or 2-Port Sensor (includes 603059 & 603078)

606850: Quatro Cable Flow Cell

603078: Flow Cell Adapter, Single Port (used with 603059)

603056: Flow Cell Mounting Spike

603075: Carrying Case, Soft-Sided

603074: Carrying Case, Hard-Sided

603162: Carrying Case, Small, Soft-Sided

603069: Belt Clip

063517: Ultra Clamp

603507: Tripod

603062: Cable Management Kit

605978: Weight, Sensor/Cable, 4.9 oz. (included on all cables 4-, 10-, 20-, or 30-meters in length)

603019: Weight, Sensor/Cable, 24 oz., 3"

603020: Weight, Sensor/Cable, 51 oz., 6"

603070: Shoulder Strap

626444: Lab Dock, Holds Meter and BOD probe

605170: Electrode Lab Stand

Professional series kits are also available



556 MPS

YSI's 556 multiparameter instrument is packed with features that make your work easier and more convenient; such as fast response times, simple calibration, waterproof case, large memory capacity, and rechargeable battery option.



YSI 556 MPS

- Simultaneously measure and display DO, pH, ORP, conductivity, temperature, salinity, TDS, and barometric pressure (optional)
- IP67 water proof, impact-resistant case
- 49,000 data-set memory (date and time stamp)
- Compatible with EcoWatch® desktop software
- GLP conforming
- Available with 4-, 10-, or 20-meter cables

 ysi.com/556



3074 Carrying Case (optional)

- Rugged, waterproof, hard-sided case
- High-impact, carved foam inserts
- Cutouts for accessories and manuals

5061 Soft Carrying Case (standard)

- Comes with 556

Classics



YSI 550A

Waterproof, rugged, and reliable, the 550A is designed for the field with innovative field-replaceable DO electrodes, 2,000+ battery life, CE compliance, a 3-year instrument warranty, and 1-year electrode warranty. Uses easy-to-install cap membranes.

 [ysi.com/550A](https://www.ysi.com/550A)

YSI 55

Offering push-button calibration with a built-in calibration chamber, direct (manual) salinity, and altitude compensation, the YSI 55 provides simultaneous readings of oxygen and temperature. Dissolved oxygen readings are automatically compensated for temperature.



YSI 58 DO Meter

The YSI 58 DO meter displays oxygen concentrations in two temperature-compensated modes. With a large measuring range, this meter is ideal for measuring super-saturated water. The meter offers manual salinity compensation, recorder output, and operation from line power or batteries. This meter is a workhorse.



4010-2/4010-3



MultiLab 4010-2
Dual channel



MultiLab 4010-3
Three channel

The YSI MultiLab line includes the 4010-1 (single channel), 4010-2 (dual channel) and 4010-3 (three channel) instruments providing easy-to-use and -calibrate menu-driven operation ideal for the laboratory.

- Two (4010-2) or three (4010-3) channel input for pH, ORP, DO/BOD, ISEs, or conductivity
- Intelligent digital sensors (IDS) - plug and play sensors
- Use non-IDS (other manufacturer's) pH, ORP or ISE sensors with a simple adapter for DIN or BNC
- Data storage - 500 data sets in manual mode and 10,000 data sets in automatic logging mode
- Large, easy-to-read graphic color displays
- GLP traceability (smart sensors store serial # and calibration data)
- Antibacterial keypad
- USB connectivity to manage data
- 3-year warranty

 [ysi.com/multilab](https://www.ysi.com/multilab)

4010-1



MultiLab 4010-1
Single channel

- One-channel input for pH, ORP, DO/BOD, or conductivity
- Data storage - 500 data sets in manual mode and 5,000 data sets in automatic logging mode
- Large, easy-to-read graphic display
- Intelligent digital sensors (IDS) - plug and play sensors
- GLP traceability (sensors store serial # and calibration data)
- USB connectivity to manage data
- 3-year warranty

 ysi.com/4010-1



IDS

The IDS (intelligent digital sensors) automatically store their unique serial number and calibration data. In addition, they also digitally process the measurement signal. The sensors can be moved from instrument to instrument and maintain their calibration data and transmit this information to the new instrument.

- Plug and play connectivity with each instrument
- IDS sensors store their own unique ID with serial number and calibration data
- Digital sensor recognition, processing and data transfer
- Includes self-stirring BOD, pH, ORP and conductivity sensors
- BOD probe uses optical dissolved oxygen technology and includes a guarded sensor tip

5100/5000

The model 5100 dissolved oxygen instrument has a built-in barometer for instant pressure-compensated calibration. Calibration is as simple as the press of a button. Other features include PC connectivity, memory, built-in OUR/SOUR software, auto-stabilization, membrane integrity check indicating membrane damage, bar code compatibility, and user-friendly interface ideal for BOD testing.

Parameters

Temperature
Dissolved oxygen
(electrochemical)
BOD
(electrochemical)



5010 BOD Probe

YSI 5100 DO Meter

Receive ultimate performance and flexibility with auto-calibration and built-in OUR/ SOUR* software – valuable process control tools for indicating the biological activity of microorganisms used in treatments.

- Built-in barometer for pressure-compensated calibration
- Programmable auto-stabilization
- Integrity function indicates membrane damage
- Bar code compatibility eliminates need to maintain bench sheets by hand
- Compatible with BOD Analyst Pro software
- Auto-cal feature calibrates in seconds

YSI 5010 Self-Stirring BOD Probe

The YSI 5010 provides continuous stirring for accurate measurement and faster response time.

International BOD probes are available. Contact YSI for more information.



YSI 5000 DO Meter

Ease of use is highlighted by menu-driven operation; a large, liquid-crystal display; the use of auto-stabilization to determine a stable reading; and audio and tactile keypad responses for reducing errors and uncertainty. And with BOD Analyst Pro software, you can perform BOD calculations and transfer control to your computer's keypad.

* The Specific Oxygen Uptake Rate (SOUR) is the method many wastewater treatment plants use to show compliance with U.S. EPA regulations part 503 for vector attraction in biosolids.

pH1200

- ATC temperature sensor or manual input
- 1-, 2- or 3-point calibration with automatic buffer recognition
- Sensor efficiency-check function helps ensure data integrity
- Autolock mode holds stable readings on the display
- Accepts U.S. (7.00, 4.01, 10.01) or NIST (6.86, 4.00, 9.18) buffer sets
- Available single-junction lab grade or double-junction piercing tip or flat-glass electrodes
- Battery or AC wall power



Parameters

Temperature
pH
mV

 [ysi.com/pH1200](https://www.ysi.com/pH1200)

The YSI pH1200, a lab-grade pH/mV testing meter, features easy-to-use operation and a large backlit LCD. An autolock feature will hold the readings on the display once they reach stabilization. Ensure the most accurate data with the autolock feature; 1-, 2-, or 3-point calibration; automatic buffer recognition; and sensor efficiency function.

3200/3100

Parameters

Temperature
Conductivity/
Specific conductance
Salinity | TDS | Resistivity

Get unmatched accuracy for ultrapure water in demanding applications such as pharma and clean rooms. Multi-point calibration allows you to measure a variety of samples with one cell. Features alarms and Resistance Ratio Technology® that continually compare against a reference.

Uses NIST-traceable cells with built-in temperature sensors, assuring the most accurate measurements.

The simpler, 3100 conductivity instrument is also available.



- Provides highest-accuracy measurements
- Uses Resistance Ratio technology
- Easy-to-read display
- CE compliant

 [ysi.com/3200](https://www.ysi.com/3200)

 [ysi.com/3100](https://www.ysi.com/3100)

EcoSense®

OK, we get it. Sometimes your budget won't allow for a premium instrument with more features. So you need a basic instrument to do your job without sacrificing data quality. Our EcoSense line of products is simple, easy to use, and straight-forward. And hey, they still have some pretty good features.



- Watertight case meets IP67 specs
- 1-year instrument warranty
- CE compliance
- Submersible waterproof cables
- Large displays
- Quick, simple calibrations
- 50 data-set memory

pH100A

The pH100A is an economically priced, reliable instrument for the measurement of pH and temperature. Use with the standard pH electrode or with the flat glass electrode to prevent damage in harsh wastewater applications.

DO200A

Economical, fast dissolved oxygen measurements with screw-on cap PE membranes that require low stirring. Uses same electrochemical DO technology as other YSI models. Easy calibration routine with the ability to measure in the field or in the lab with BODs.

EC300A

The EC300A measures conductivity, salinity, TDS, and temperature in a simple, compact handheld.

Parameters

Temperature
Dissolved oxygen (electrochemical)
BOD (electrochemical)
pH
ORP
Conductivity/
Specific conductance
Salinity
TDS



9300 and 9500

The 9300 and the 9500 both feature a graphic, backlit display; on-screen instructions; a waterproof case; various-diameter sample tube holder; multiple languages; 100+ test options; and direct reading concentrations.

The 9500 has additional features that include a waterproof USB that can also be used for power, 500 data-set memory, and several user-selectable options.

Parameters

Hardness
Ammonia
Nitrate
Nitrite
pH
Copper
Ozone
Chlorine
Alkalinity
Copper
... and more

 ysi.com/photometers



pH10A

The pH10 is the perfect instrument for economical spot sampling of pH and temperature in applications such as wastewater and surface water. Quickly calibrate with up to 3-point auto-cal.

ORP15A

The ORP15A offers accurate, low-cost measurement of ORP (absolute and relative mV) and temperature.

EC30A

The EC30A measures conductivity, TDS, and temperature with an easy, user-replaceable electrode ensuring the instrument is always ready.

Parameters

Temperature
pH
ORP
Conductivity/
Specific conductance
Salinity
TDS



- Waterproof case meets IP67 specs
- 1-year instrument warranty
- Replaceable electrode
- 50 data-set memory
- Hold feature locks stable readings on display
- Graphic display with on-screen instructions
- >200 hour battery life with indicator
- Last calibration GLP record

Multiparameter Colorimeters



pHotoFlex standard

Ideal solution for quick, simple, accurate colorimeter measurements for approximately 85 tests



YSI pHotoFlex® Colorimeters

Portable Colorimeters for Lab and Field

These rugged, waterproof, multiparameter colorimeters are ideal for laboratory and field testing. The instruments feature a large, backlit display; waterproof rating; data logging with the ability to export data to a computer using LSdata software; user-defined programs; and a 2-year warranty.

- Calibration adjustment for selected methods
- Data storage; 100 data sets with pHotoFlex STD and 1,000 data sets with pHotoFlex pH
- Large, easy-to-read backlit LCD display
- IP67 waterproof case; easy to hold or set on a benchtop (lab station also available)
- Flexible, fixed adapter for various cell types features a flip design to accommodate a variety of heights and diameters; it is also attached to prevent it from being lost
- ~138 tests (pHotoFlex pH); ~85 tests (pHotoFlex STD)
- PC connectivity to manage data (optional LSdata software) and update firmware or methods; barcode compatibility
- pHotoFlex pH offers a BNC connection in order to take pH measurements directly and to measure the pH dependent parameter NH_3
- Compatible with other manufacturer's chemistries/reagents



The pHotoFlex pH colorimeter allows for the connection of an external pH sensor. Not only does this allow for pH measurements but also a true ammonia reading directly compensating for accurate pH and temperature readings.

No other colorimeter has this capability.

pHotoFlex pH

Ideal solution for quick, simple, accurate colorimeter measurements for approximately 135 tests

Single Parameter Colorimeters

900 Chlorine

Ideal solution for quick, simple, accurate chlorine measurements



The 900 Chlorine colorimeter is the simplest, easiest way to gather accurate chlorine data.

- Quickly, easily, and accurately measure Free and Total Chlorine
- Automatic Data Storage; 16-data sets with date and time stamp. Export data with the 900 Series Data Hub infrared data transfer.
- Large, easy-to-read backlit LCD display
- IP68 waterproof case; easy to hold or set on a benchtop
- Innovative light shield avoids moving parts or separate pieces that can easily be broken or lost.
- User-calibration to any government or organizational standard (for example, N.I.S.T. or ISO).
- Resolution can be changed for specific range requirements
- 2-year warranty
- Includes 100 each Free and Total Chlorine powder packs

The 910 instrument features a large, backlit display; a real-time clock; automatic data logging; as well as the ability to export data to a computer or printer using the 900 Series Data Hub for infrared data transfer.

- Quickly, easily, and accurately measure COD
- Easy-to-open and easy-to-handle powder packs
- IP68 waterproof case; easy to hold or set on a benchtop
- Factory calibrated; User-calibration possible
- 2-year warranty
- Hg free reagents also available

YSI offers a used COD vial program to properly dispose of empty vials. Contact YSI for more information.



910 COD

Ideal solution for simple, accurate COD measurements



 ysi.com/900

 ysi.com/910

Data Hub for infrared data transfer



Calibration Solutions

3160: 1,413 $\mu\text{s}/\text{cm}$ conductivity solution (8 pints)

3161: 1,000 $\mu\text{s}/\text{cm}$ conductivity solution (quart)

3163: 10,000 $\mu\text{s}/\text{cm}$ conductivity solution (quart)

3165: 100,000 $\mu\text{s}/\text{cm}$ conductivity solution (quart)

3167: 1,000 $\mu\text{s}/\text{cm}$ conductivity solution (8 pints)

3168: 10,000 $\mu\text{s}/\text{cm}$ conductivity solution (8 pints)

3169: 50,000 $\mu\text{s}/\text{cm}$ conductivity solution (8 pints)

3682: Zobell, ORP solution (125 mL)

3821: pH 4 buffer (6 pints)

3822: pH 7 buffer (6 pints)

3823: pH10 buffer (6 pints)

3824: pH 4, 7, 10 buffers (2 pints each)

3841: 1 mg/L ammonium solution (500 mL)

3842: 10 mg/L ammonium solution (500 mL)

3843: 100 mg/L ammonium solution (500 mL)

3885: 1 mg/L nitrate solution (500 mL)

3886: 10 mg/L nitrate solution (500 mL)

3887: 100 mg/L nitrate solution (500 mL)

5580: Confidence Solution® to verify pH, ORP and conductivity data (not for cal)

Colorimetry Reagents (900, 910, pHotoFlex)

| Item | Part # | Description | Range |
|------------------------|----------|---|--|
| Aluminum Al-1 TP | 251400Y | Powder, pack of 100 | 0.002 to 0.250 mg/L |
| Ammonium NH4-1 TP | 251408Y | Nitrogen, Ammonia, powder, pack of 100 | 0.01 to 0.50 mg/L NH ₄ -N; 0.01 to 0.64 NH ₄ ; NH ₃ -N |
| Ammonium NH4-2 TC (LR) | 251997Y | Nitrogen, Ammonia Low Range, vial, pack of 50 | 0.02 to 2.50 mg/L NH ₄ -N; 0.03 to 3.20 mg/L NH ₄ |
| Ammonium NH4-3 TC (HR) | 251998Y | Nitrogen, Ammonia High Range, vial, pack of 50 | 0.4 to 50.0 mg/L NH ₄ -N; 0.5 to 64.4 mg/L NH ₄ ; NH ₃ -N |
| Chlorine Cl2-1 TP | 251401Y | DPD, Chlorine, Free, powder, 10 mL, pack of 100 | 0.02 to 2.00 mg/L |
| Chlorine Cl2-2 TP | 251402Y | DPD, Chlorine, Free, powder, 20 mL, pack of 100 | 0.5 to 5.0 mg/L |
| Chlorine Cl2-3 TP | 251414Y | DPD, Chlorine, Total, powder, 10 mL, pack of 100 | 0.02 to 2.00 mg/L |
| Chlorine Cl2-4 TP | 251415Y | DPD, Chlorine, Total, powder, 25 mL, pack of 100 | 0.5 to 5.0 mg/L |
| Chlorine Cl2T1 TT (LR) | 251600Y | DPD, Chlorine, Free, No.1 Low Range, tablet, pack of 100 | 0.01 to 6.0 mg/L |
| Chlorine Cl2T2 TT (LR) | 251601Y | DPD, Chlorine, Free, No.3 Low Range, tablet, pack of 100 | 0.11 to 6.0 mg/L |
| Chlorine Cl2T3 TT (HR) | 251602Y | DPD, Chlorine, Free, No.1 High Range, tablet, pack of 100 | 0.1 to 10 mg/L |
| Chlorine Cl2T4 TT (HR) | 251603Y | DPD, Chlorine, Free, No.3 High Range, tablet, pack of 100 | 0.1 to 10 mg/L |
| COD1 TC (LR) | 251990Y | COD Low Range, vial, pack of 25 | 3 to 150 mg/L CSB (148°C / 298°F, 2 hrs) |
| COD1-F TC (LR) | 251986Y | COD Low Range, Hg free, vial, pack of 25 | 0 to 150 mg/L |
| COD2 TC (MR) | 251991Y | COD Mid Range, vial, pack of 25 | 20 to 1,500 mg/L CSB (148°C / 298°F, 2 hrs) |
| COD2-F TC (MR) | 251985Y | COD Mid Range, Hg free, vial, pack of 25 | 0 to 1,500 mg/L |
| COD3 TC (HR) | 251992Y | COD High Range, vial, pack of 25 | 200 to 15,000 mg/L CSB (148°C / 298°F, 2 hrs) |
| COD3-F TC (HR) | 251984Y | COD High Range, Hg free, vial, pack of 25 | 0 to 15,000 mg/L |
| Copper Cu-1 TP | 251403Y | Copper, Powder, pack of 100 | 0.5 to 12.00 mg/L |
| DEHA1 TP | 251421Y | Oxygen Scavenger DEHA1, powder, pack of 100 | 0.004 to 0.450 mg/L |
| Iron Fe-1 TP | 251404Y | Iron, Total, Low Range, powder, pack of 100 | 0.012 to 1.800 mg/L |
| Iron Fe-2 TP | 251405Y | Iron, Total, powder, pack of 100 | 0.02 to 3.00 mg/L |
| Manganese Mn-1 TP | 251406Y | Manganese High Range, powder, pack of 100 | 0.2 to 20.0 mg/L |
| Manganese Mn-2 A1 | 251417A1 | Rochelle salt, liquid, 30 mL | Used with LR (251417Y) Manganese if sample has 300 mg/L CaCO ₃ hardness |
| Manganese Mn-2 A2 | 251417A2 | Rochelle salt, liquid, 500 mL | Used with LR (251417Y) Manganese if sample has 300 mg/L CaCO ₃ hardness |
| Manganese Mn-2 TP | 251417Y | Manganese Low Range, powder, pack of 50 | 0.007 to 0.700 mg/L |
| Molybdate Mo-1 TP | 251407Y | Molybdate, powder, 10 mL, pack of 100 | 0.3 to 35.0 mg/L |
| Molybdate Mo-2 TP | 251418Y | Molybdate, powder, 25 mL, pack of 100 | 0.3 to 40.0 mg/L |
| N2H41 TR | 251416Y | Hydrazine, 100 mL for 50 tests | 0.004 to 0.600 mg/L |
| Nitrate NO3-1 TC | 251993Y | Vial, pack of 50 for 25 tests | 0.2 to 30.0 mg/L NO ₃ -N; 1.0 to 133.0 mg/L NO ₃ |
| Nitrite NO2-1 TP | 251409Y | Low Range, powder, 10 mL, pack of 100 | 0.002 to 0.300 mg/L NO ₂ -N; 0.007 to 0.985 mg/L NO ₂ |
| Nitrite NO2-2 TC | 251994Y | Vial, pack of 24 | 0.03 to 0.60 mg/L NO ₂ -N (LR); 0.10 to 1.97 mg/L NO ₂ 0.30 to 3.00 mg/L NO ₂ -N (HR); 0.99 to 9.85 mg/L NO ₂ |
| Nitrite NO2-3 TP | 251420Y | LR, powder, 25 mL, pack of 100 | 0.002 to 0.300 mg/L NO ₂ -N; 0.007 to 0.985 mg/L NO ₂ |
| Nitrogen Ntot1 TC (LR) | 251995Y | Nitrogen LR, Total, vial, pack of 50 for 25 tests | 0.5 to 25.0 mg/L (Digestion 120°C / 248°F, 30 min) |
| Nitrogen Ntot2 TC (HR) | 251996Y | Nitrogen HR, Total, vial, pack of 50 for 25 tests | 10 to 150 mg/L (Digestion 120°C / 248°F, 30 min) |
| Phosphate PO4-1 TP | 251410Y | Phosphate (Orthophosphate), powder, pack of 100 | 0.007 to 0.800 mg/L PO ₄ -P; 0.02 to 2.45 mg/L PO ₄ |
| Phosphate PO4-2 TP | 251989Y | Phosphate Reactive (Orthophosphate), vial, pack of 100 | 0.06 to 5 mg/L PO ₄ ; 0.02 to 1.63 mg/L PO ₄ -P |
| Phosphate PO4-3 TC | 251988Y | Phosphorus, Total, vial, pack of 50 | 0.06 to 3.4 mg/L PO ₄ ; 0.02 to 1.141 mg/L (Digestion 100°C / 212°F) |
| Phosphate PO4-4 TC | 251987Y | Phosphorus, Acid hydrolyzable, vial, pack of 50 | 0.06 to 3.5 mg/L PO ₄ ; 0.02 to 1.141 mg/L (Digestion 100°C / 212°F) |
| Silica Si-1 TP (LR) | 251411Y | Silica Low Range, powder, pack of 100 | 0.01 to 1.6 mg/L SiO ₂ ; 0.005 to 0.748 Si |
| Silica Si-2 TP (HR) | 251412Y | Silica High Range, powder, pack of 100 | 0.7 to 70.0 mg/L SiO ₂ ; 0.3 to 3.27 mg/L Si w/ 28 mm cell; 1 to 100 mg/L SiO ₂ ; 0.5 to 46.7 mg/L Si w/ 16 mm cell |
| Silica Si-3 TP | 251422Y | Silica Ultra High Range, powder, pack of 100 | 1 to 75 mg/L SiO ₂ ; 0.5 to 35.1 mg/L Si |
| Sulfate SO4-1 TP | 251413Y | Sulfate, powder, 10 mL, pack of 100 | 0 to 70 mg/L SO ₄ |
| Sulfate SO4-2 TP | 251423Y | Sulfate, powder, 25 mL, pack of 100 | 2 to 70 mg/L SO ₄ |

Additional Chlorine, along with Potassium iodide and Sulfamic acid for other manufacturer's colorimeters also available. Contact us to learn more.

About Xylem

Xylem (NYSE: XYL) is a leading global water technology provider, enabling customers to transport, treat, test and efficiently use water in public utility, residential and commercial building services, industrial and agricultural settings. The company does business in more than 150 countries through a number of market-leading product brands, and its people bring broad applications expertise with a strong focus on finding local solutions to the world's most challenging water and wastewater problems. Xylem is headquartered in White Plains, N.Y., with 2012 annual revenues of \$3.8 billion and approximately 12,900 employees worldwide. Xylem has been named to the Dow Jones Sustainability World Index for the last two years for advancing sustainable business practices and solutions worldwide.

The name Xylem is derived from classical Greek and is the tissue that transports water in plants, highlighting the engineering efficiency of our water-centric business by linking it with the best water transportation of all -- that which occurs in nature. For more information, please visit us at www.xylem.com.



a xylem brand

YSI
1700/1725 Brannum Lane
Yellow Springs, Ohio 45387
+1 937.767.7241
800.765.4974 (US)
environmental@ysi.com
www.YSI.com

ProODO, ODO, BOD Analyst Pro, Resistance Ratio Technology, We Know DO, EcoWatch, pHotoFlex and EcoSense are registered trademarks of YSI Incorporated. YouTube, Facebook, LinkedIn, and Twitter are registered trademarks.