

We create
spaces that
change people.



Fulton West [top, ©Tom Harris | Design by Gensler], Comer Children's Hospital (bottom left), Ace Hotel Chicago (bottom right)

Founded in 1990, **site design group, ltd. (site)** is an award-winning landscape architecture and urban design firm based in Chicago, Illinois. *site* is certified as a Minority Business Enterprise (MBE) and Disadvantaged Business Enterprise (DBE). As landscape architects, urban designers, planners, arborists, architects, and creative thinkers, we are a staff of 30 diverse and innovative professionals. We are enlivened by our surroundings and strive to produce creative spaces that inspire, restore, and bring communities together.

As designers, creative thinkers, and engaged citizens, we understand the value of exterior environments that create a sense of place. Successful placemaking leads to the long-term care and use of these spaces by the public. At *site* this is our goal in all we do: create spaces that are well-loved and well-utilized by the communities they reside within.

Although based in Chicago, our experience in Wisconsin has expanded significantly in recent years. Notable recent projects include the Milwaukee Harbor District Riverwalk Design Guidelines, Milwaukee Public Schools Burnham and Alba Playfields, and the Knowledge Road Streetscape at the University Research Park in Madison. The success of our projects is evidence of our ability to design and construct outstanding public spaces that people will enjoy for years to come.



WIU QUADCITIES RIVERFRONT CAMPUS MOLINE, ILLINOIS



Completed in 2014, the Riverfront Campus now supports 3,000 undergraduate and graduate students through a cohesive campus.

Client/Owner

Holabird & Root / Western Illinois University

Description

In response to a land gift of 20 acres of Mississippi Riverfront property in downtown Moline, Western Illinois University Quad Cities initiated a complete relocation of all campus facilities into a single, unified campus on the riverfront property. In response to the established core project principles, *site design group, ltd.* [*site*] worked with Holabird + Root to develop a site plan that creates a formal campus presence. The plan included a strong axes through the campus, efficient access and circulation, and appropriate zoning of parking and open spaces. The Phase I and II are united into a cohesive campus with careful siting of buildings, functional and organized circulation systems, and flexible, multipurpose exterior spaces that respond to the riverfront context and provide opportunities for gathering, activity, and respite.

Completion

2014

Budget

\$28,000,000

Contact

Russel Walker, Associate, Holabird & Root
(312) 357-1771 / rwalker@holabird.com





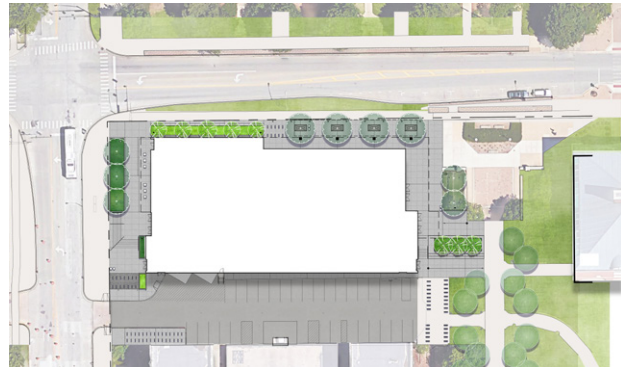
The building is targeting LEED Gold certification.

Client/Owner

Skidmore, Owings, and Merrill (SOM) / University of Illinois at Urbana-Champaign

Description

The Campus Instructional Facility is a new center for flexible learning designed to meet the changing needs of students and faculty at the University of Illinois Urbana-Champaign. Located adjacent to the main engineering quadrangle at Springfield Avenue and West Wright Street, the building will serve as a hub for contemporary teaching and learning, with a focus on enhancing collaboration and introducing new technologies for hands-on learning. A central circulation spine anchors the building’s public spaces, allowing views across all floors and overlooking the engineering quadrangle, Grainger Library, and the north-south pedestrian axis. Other site improvements include welcoming entrances and streetscape plantings.



Completion

Ongoing

Budget

\$53,000,000

Contact

Kevin Rodenkirch, Associate Director, SOM
(312) 360-4393 / kevin.rodenkirch@som.com



renderings courtesy of SOM / Smilodon



The transformational design of the new Keller Center integrates policy-inspired solutions to better connect with the community and serves as an exemplar in comprehensive sustainable design with LEED Platinum and Living Building Challenge, Petal certifications.

Client/Owner

Farr Associates / The University of Chicago

Description

The Keller Center - Harris School of Public Policy sought preservation and restoration of a mid-century masterpiece for their new home on the University of Chicago's Campus South. The decorative limestone-clad building with a 5' tall imposing plinth was in need of restoration and social repair to the adjacent underserved neighborhood which the building turned its back to. The new design carves new paths through the plinth and extends the exterior public spaces through the building. A public garden encircles the building and includes multiple entries and new universally accessible ramps. New public paths erode the monumental plinth inviting passage on all sides. Benches, café tables, and public art are arranged intentionally to create pockets of gathering spaces for small groups and individual respite. The surrounding landscape slopes up the plinth with a variety of native species to soften the tall limestone wall.



Completion

2018

Budget

\$80,000,000

Contact

Angela Knoble, Project Manager, University of Chicago
knoble@uchicago.edu





According to the University Executive Vice President David Fithian, "For those of us involved every day in convening groups on campus and in organizing meetings and events for guests from around the world, the Rubenstein Forum fulfills a critical need for the University. Too often events hosted by the University are held in other parts of Chicago, and our guests are denied the opportunity to experience the intellectually dynamic and beautiful campus that we have in Hyde Park."

Client/Owner

Diller Scofidio + Renfro / University of Chicago

Description

Working with Diller Scofidio + Renfro, *site design group, ltd.* (*site*) is providing landscape architecture and urban design services for the University of Chicago's new David M. Rubenstein Forum - a building designed for intellectual, institutional, and educational exchange for the University's faculty, staff, and visiting scholars. Located at the corner of Woodlawn Avenue and 60th Street, the design includes a two-story base and a narrower 165-foot tower. The site complements the 90,000 square foot meeting facility through flexible, multi-use outdoor rooms that feature textural, four-season plantings, seating, and gathering opportunities for large or small groups. The Rubenstein Forum is currently in the design phase, and is expected to be completed in 2018.

Completion

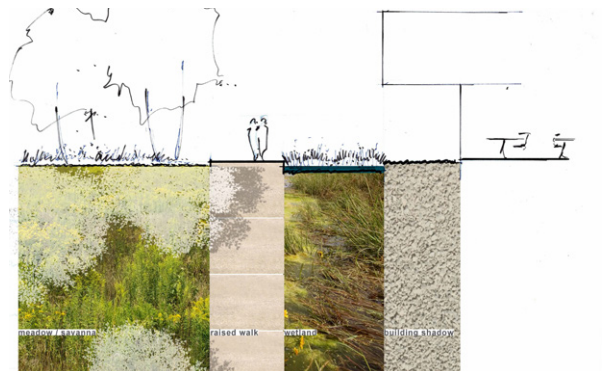
Ongoing

Budget

Confidential

Contact

Richard Bumstead, Associate Director for Campus Environment, University of Chicago
[773] 834-1657 / rcbumste@uchicago.edu





Sustainability was a key design goal. The project is certified LEED Gold by USGBC.

Client/Owner

Solomon Cordwell Buenz (SCB) / American Campus Communities / University of Illinois at Chicago

Description

site site recently worked with Solomon Cordwell Buenz, American Campus Communities, and the University of Illinois at Chicago on the new mixed-use Academic and Residential Complex, Harrison Hall. Located at the corner of Harrison and Morgan streets, the project includes a 2-story academic classroom building and connected 10-story undergraduate residence hall with shared amenities. On the exterior, a welcoming plaza space serves both residents and students through stormwater planters, lush native landscaped areas, and flexible spaces for gathering. Seating areas accommodate small or large groups through integrated seatwalls and cafe tables. Plant selections provide year-round interest, while the selected materials and furnishings complement the building's architecture.

Completion

2019

Contact

Addom Gentner, Vice President Development,
American Campus Communities
512.732.1000 / agentner@americancampus.com





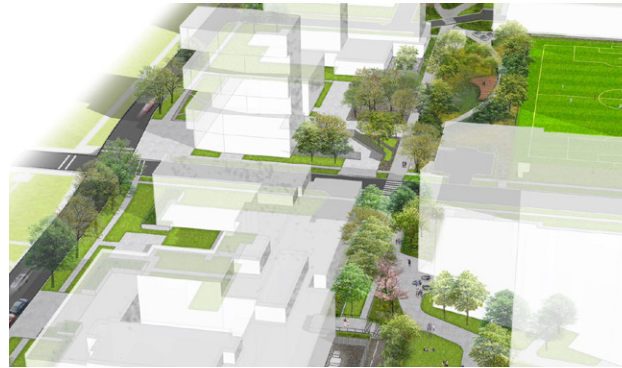
A key project challenge was developing a planting, materials, and furnishings palette that complemented each of the unique architectural styles of the surrounding buildings while tying the connector into one design language.

Client/Owner

The University of Chicago / Terra Engineering

Description

The University of Chicago’s Mid-Block Connector is an east-west pedestrian experience that connects multiple buildings and institutions on the Campus South. The project began as a feasibility study and visioning exercise, but later transitioned into full design and engineering, and is currently under construction. The primary pathway of the Mid-Block Connector meanders between several recently completed and ongoing adjacent projects. The project includes primary and secondary pathways, garden spaces, site furnishings, lighting, and gathering spaces throughout UC’s Campus South to serve the students, staff, faculty, and community members who use it. In addition to providing enhanced pedestrian connections, the project also takes a holistic approach to stormwater management. When complete, the Mid-Block Connector will provide regional stormwater management with bioinfiltration areas and underground storage areas across the Campus.

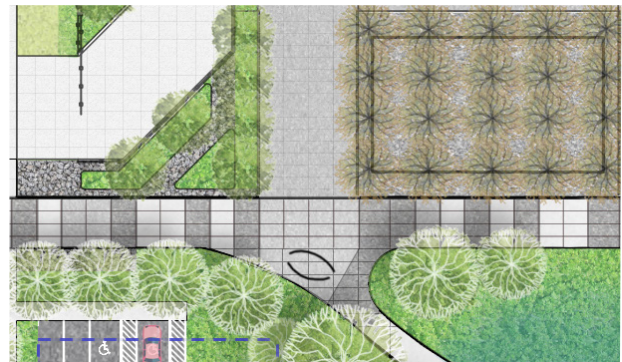


Completion

Ongoing

Contact

Katie Martin Peck, Associate Director, Campus Environment, The University of Chicago
 (773) 834-1657 / katie2@uchicago.edu





One of the primary goals of the University was to make the new streetscape as lush and enlivened with plants as possible. The selected native and adapted species are low maintenance, functional, and provide interest throughout the academic year.

Client/Owner

The University of Chicago

Description

The University of Chicago's 58th Street West Streetscape included the redevelopment and enhancement of a heavily utilized East-West pedestrian thoroughfare through the heart of campus. The project included a renovation of an existing vehicular street into a pedestrian-oriented gateway to the campus, creating a safe and functional pedestrian experience. The streetscape serves as an extension of the University's Main Quadrangle, and an important connection between the biological and physical science campuses as well as several nearby institutes, centers, and academic offices. *site design group, ltd. (site)* led the coordination, design, and engineering of the streetscape, including the circulation network, paving, planting, and site lighting.

Completion

2014

Budget

\$3,000,000

Contact

Kathleen Golumb, Interim Director, Campus Environment,
The University of Chicago
(773) 834-4450 / kmgolumb@uchicago.edu



DOWNTOWN MONTESSORI NATURE PLAY GARDEN MILWAUKEE, WISCONSIN



A large Catalpa tree that needed to be removed from a nearby city property found a new life as the centerpiece of the "adventure course" at the Downtown Montessori Academy nature play garden. The beautiful old tree continues to provide joy and shelter to the community through reuse.

Client/Owner

Downtown Montessori

Description

The new nature play garden at Milwaukee's Downtown Montessori Academy introduces educational, exploratory, and nature adventure areas in the school's play yard. Features include much-needed green space – such as a raingarden, discovery garden, evergreen forest screen, and shade garden, areas for teaching activities – including a stage area, sunken amphitheater, and seating boulders, as well as open-ended, creative play opportunities using natural materials and equipment, featuring a pebble pool, treehouse, campground, fairy garden, and hide-out nooks. A large Catalpa tree that was removed from a nearby city property is being repurposed as the centerpiece of the adventure course.

Completion

2016

Budget

\$180,000

Contact

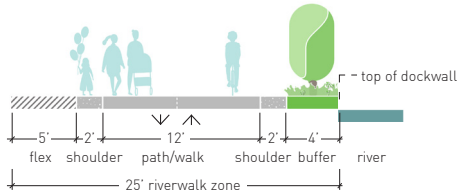
Ian Spanic, Executive Director,
Downtown Montessori Academy
(414) 744-6005 / ispanic@downtownmontessori.com



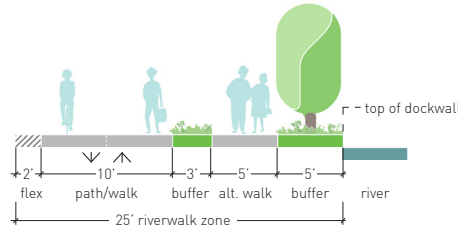


HARBOR DISTRICT RIVERWALK DESIGN STANDARDS MILWAUKEE, WISCONSIN

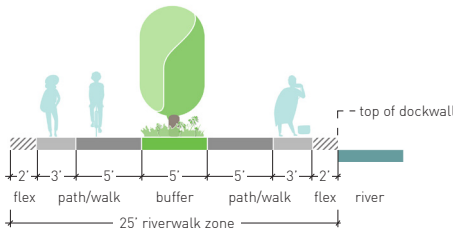
COMBINED MULTI-USE TRAIL



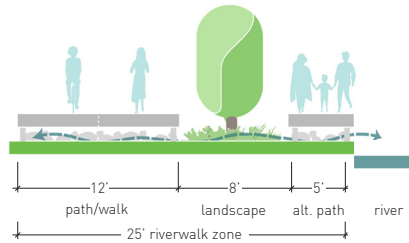
COMBINED MULTI-USE TRAIL WITH SECONDARY PATH



SEPARATED BIKE / PEDESTRIAN TRAIL



AT-GRADE PLATFORM TRAIL



The RiverWalk system must address and support the original 1992

RiverLink guidelines, specifically related to three key topics: (1) Recreation; (2) Resource; and (3) Transportation.

The trail types to the left are examples of the various cross-sections the planning team is working with the City and Harbor District to develop.

Client/Owner

Department of City Development of the City of Milwaukee, and in partnership with the Harbor District, Inc.

Description

site design group, ltd. (site) is currently leading a diverse consultant team in the development of Design Standards for the Harbor District Riverwalk in Milwaukee, Wisconsin. The Design Standards will guide the form, function, and future development of the Riverwalk through established standards for paving, planting, furnishing, circulation, access, and more. The study includes a robust community engagement process. Key features of the plan include typical Conventional Riverwalk Design Standards; typical Challenging Riverwalk segments; and Public Access Node and Connection Point areas.

Completion

Ongoing

Contact

Dan Adams, Planning Director
Harbor District, Inc.
(414) 643-1266

