

# Web Intelligence Rich Client Installation Guide



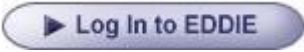
## Contents

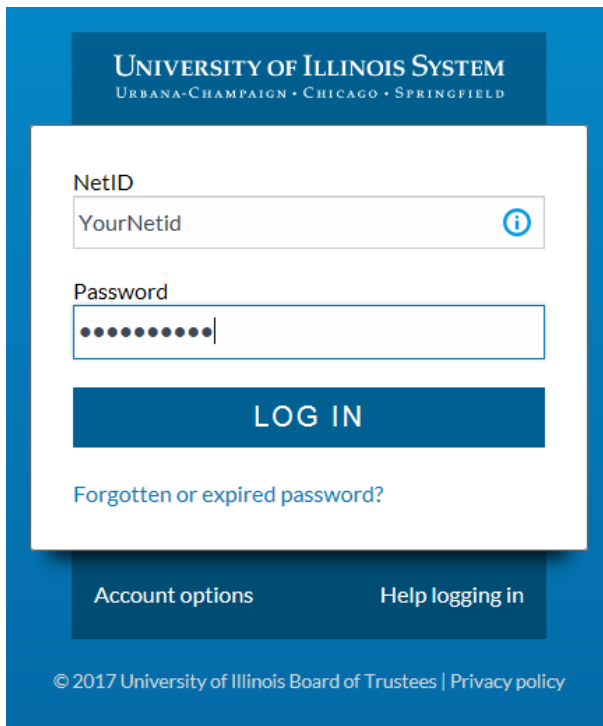
Purpose of this Document .....	3
Installing Web Intelligence Rich Client.....	3
Launching Web Intelligence Rich Client for the First Time .....	14
Opening Web Intelligence Rich Client from the Desktop .....	16

## Purpose of this Document

This document will guide you through the process of installing Web Intelligence Rich Client. The installation is started from the EDDIE Preferences page. **(The screenshots are examples. The Service Pack (SP) may be different a different number).**

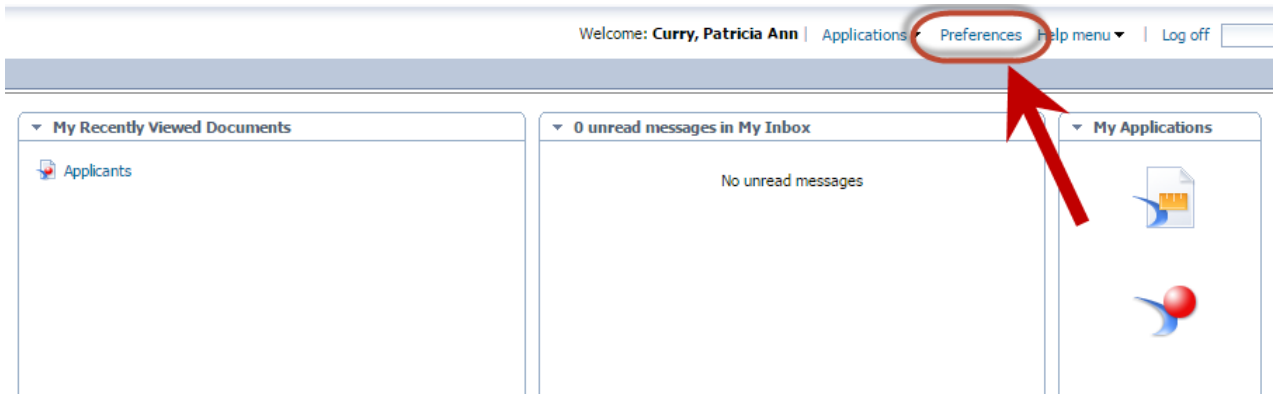
## Installing Web Intelligence Rich Client

1. Open the EDDIE login page: <https://eddie.ds.uillinois.edu/>
2. Click the  button.
3. Enter your University **NetID** and **Password**.

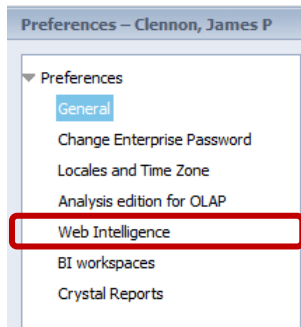


4. Click the **LOG IN** button.

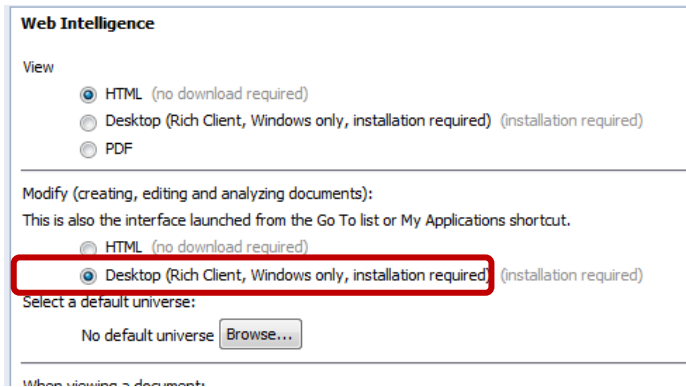
5. Select **Preferences** in the upper right corner.



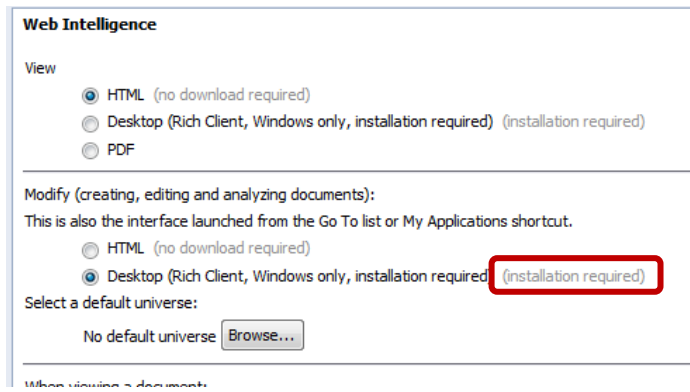
6. Under Preferences – select **Web Intelligence**.



7. Under Modify (creating, editing and analyzing documents), select **Desktop** (Rich Client, Windows only, installation required)



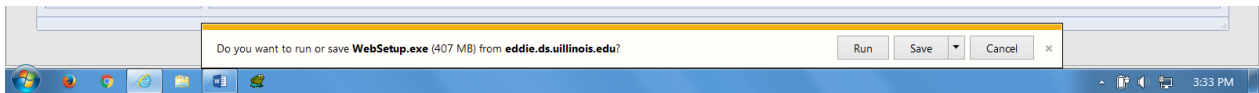
- Click on the (installation required) link. (The link will look grayed out, but click it anyway)



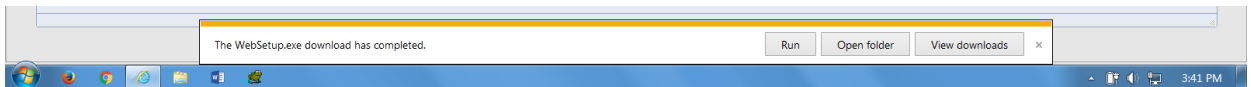
**Note:** If you do not see the *Installation Required* link, this indicates that you do not have Data Warehouse access. Have your USC submit an access request on the DS Security Application. See [https://www.ait.s.uillinois.edu/access/get\\_access/get\\_data\\_warehouse\\_access](https://www.ait.s.uillinois.edu/access/get_access/get_data_warehouse_access) for more information.

### Internet Explorer

- When prompted to either run or save the WebSetup.exe file from EDDIE. Click **Save**.



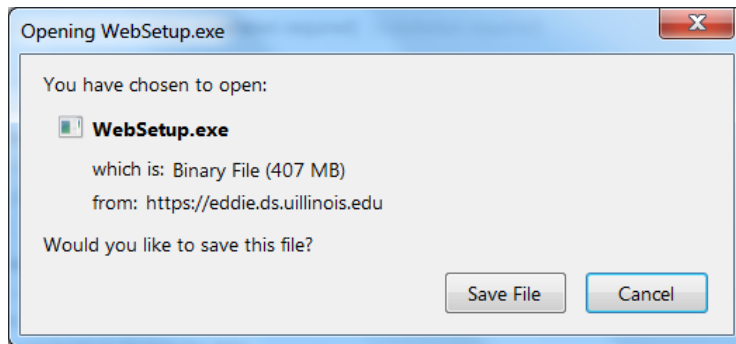
- The setup file will begin to download. There may be a delay before the next step appears. This is normal. When the download is complete you will be given the choice to Run, Open folder, or View downloads.



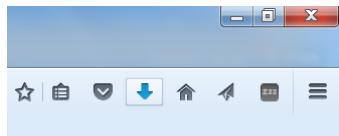
- Select **Open folder**.

## Firefox

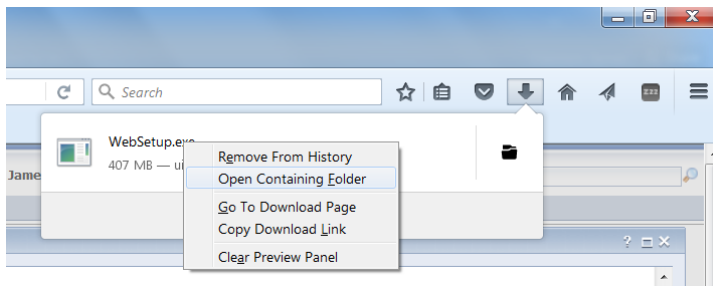
- Click the Save File button.




- When the download is complete, click the blue arrow in the menu bar.

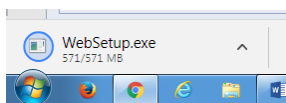


- Right-click WebSetup.exe and select **Open Containing Folder** from the pop-up menu.

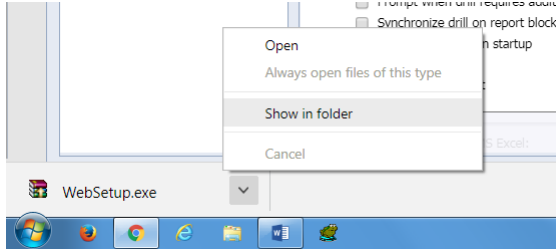


## Chrome

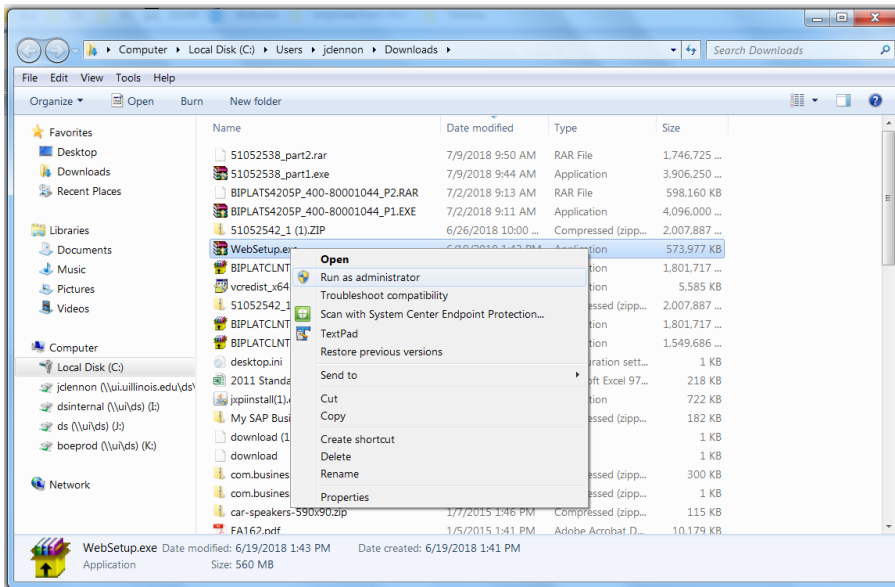
- When the download is complete, click the  button in the WebSetup.exe box in the lower left corner.



- Select **Show in folder** from the pop-up menu.



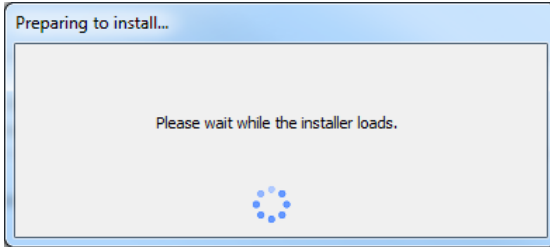
9. Right-click the WebSetup.exe file and select Run as administrator.



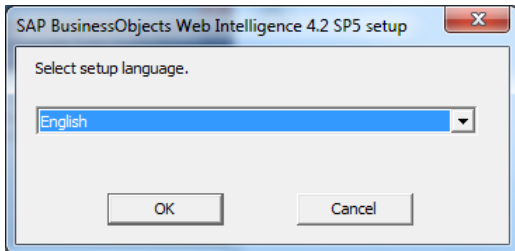
If asked if you want to allow the SAP AG Program to make changes to this computer, select **Yes**



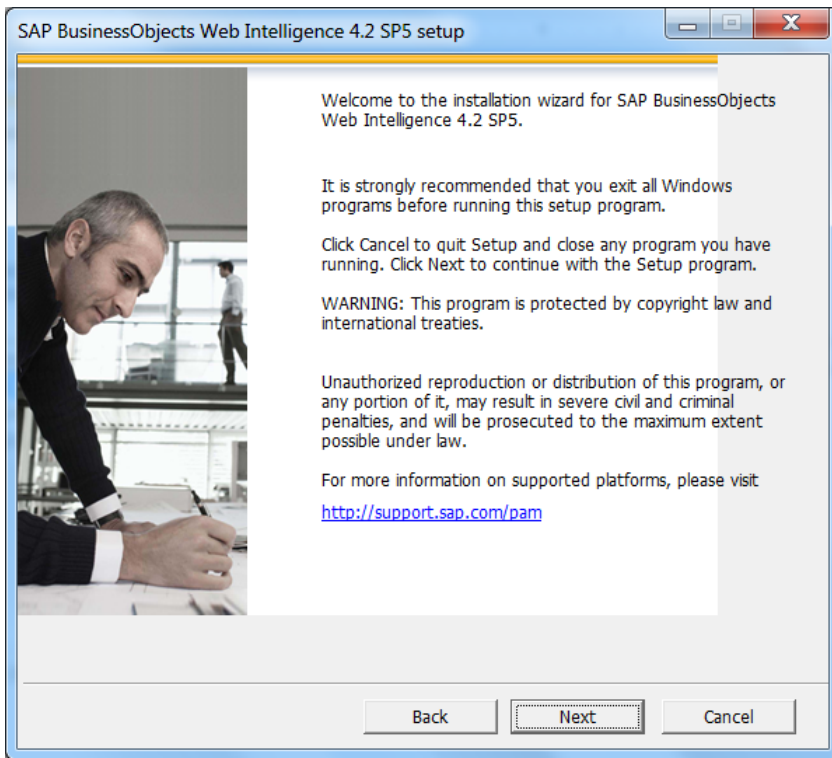
The installer will start after it loads.



10. For setup language, Click **OK**



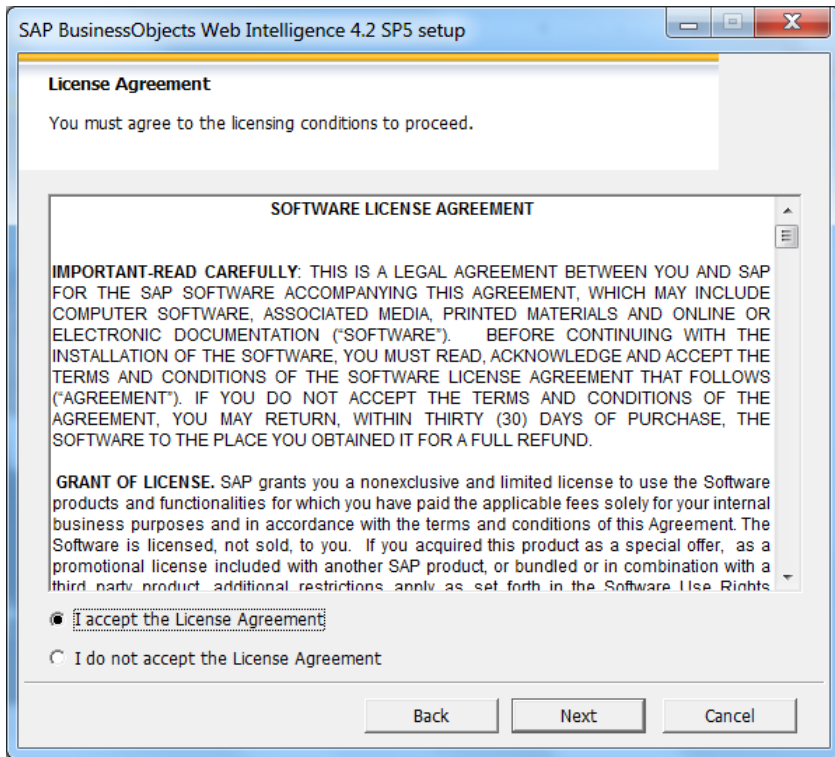
11. If all prerequisites are met, click **Next**



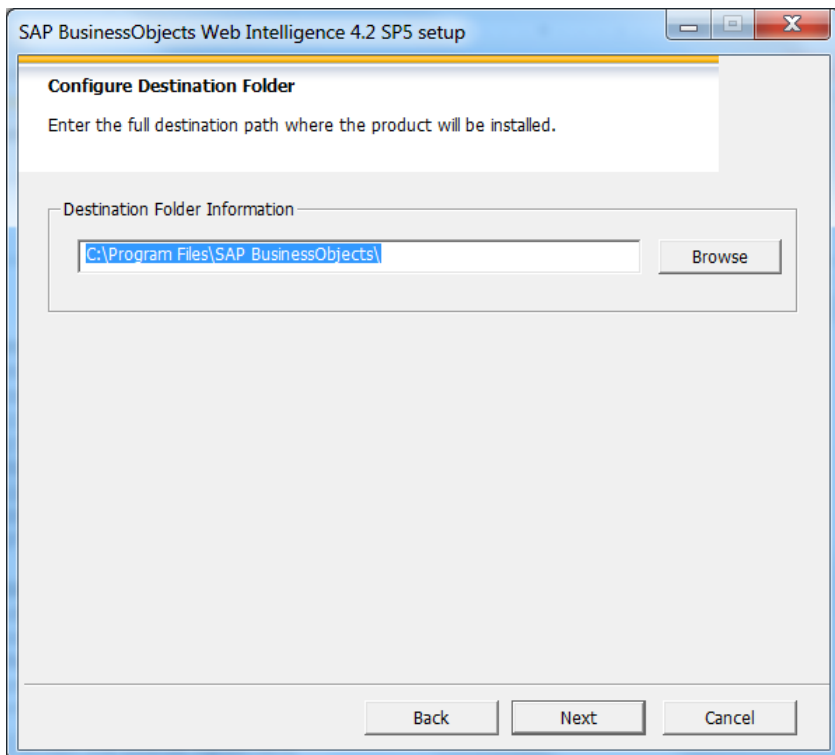
12. Click **Next** to run the setup



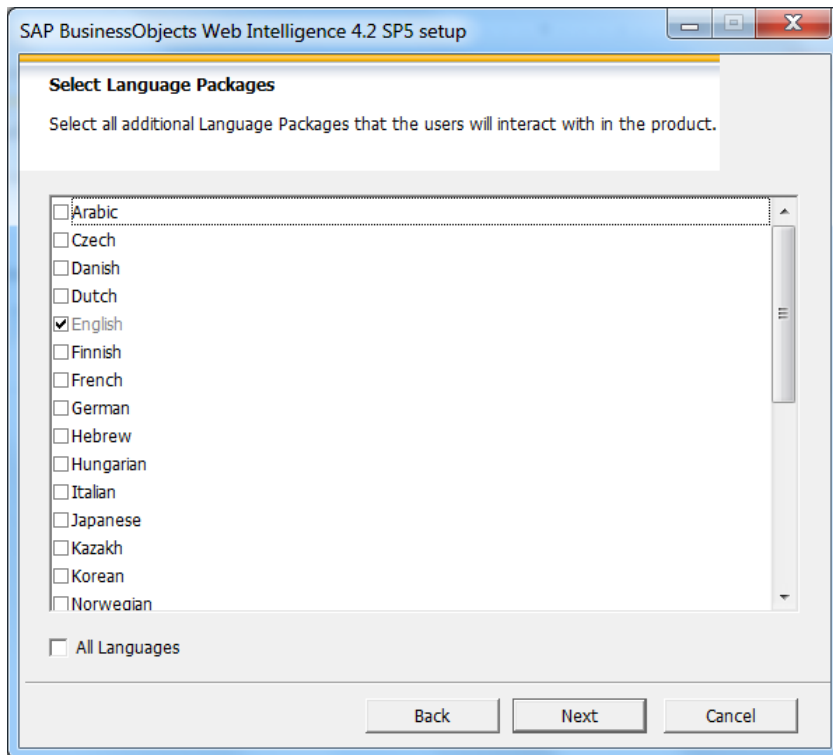
13. Select “I accept the License Agreement” and then click **Next**



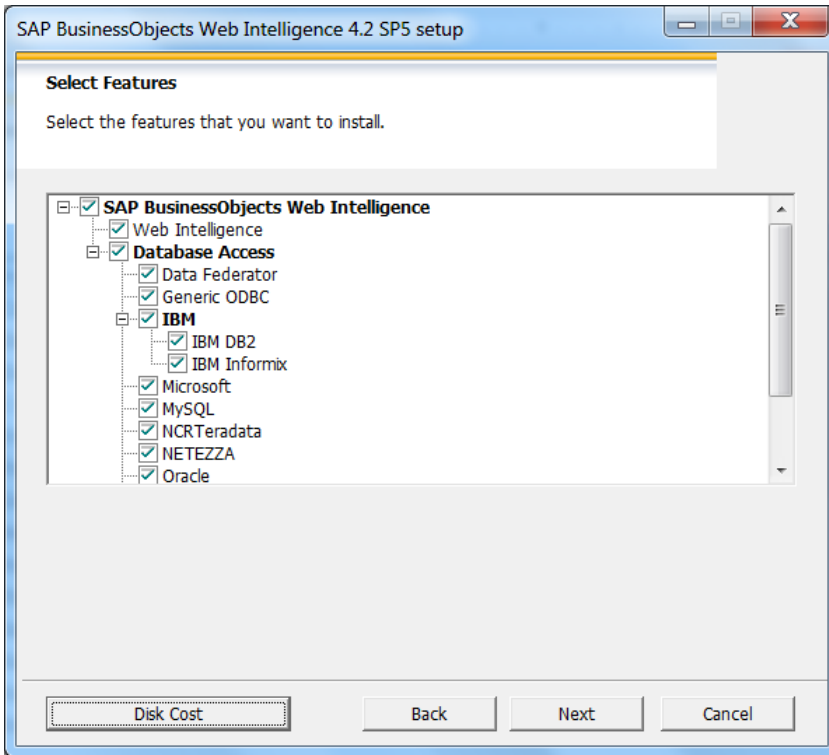
14. Click **Next** to accept the default destination folder information.



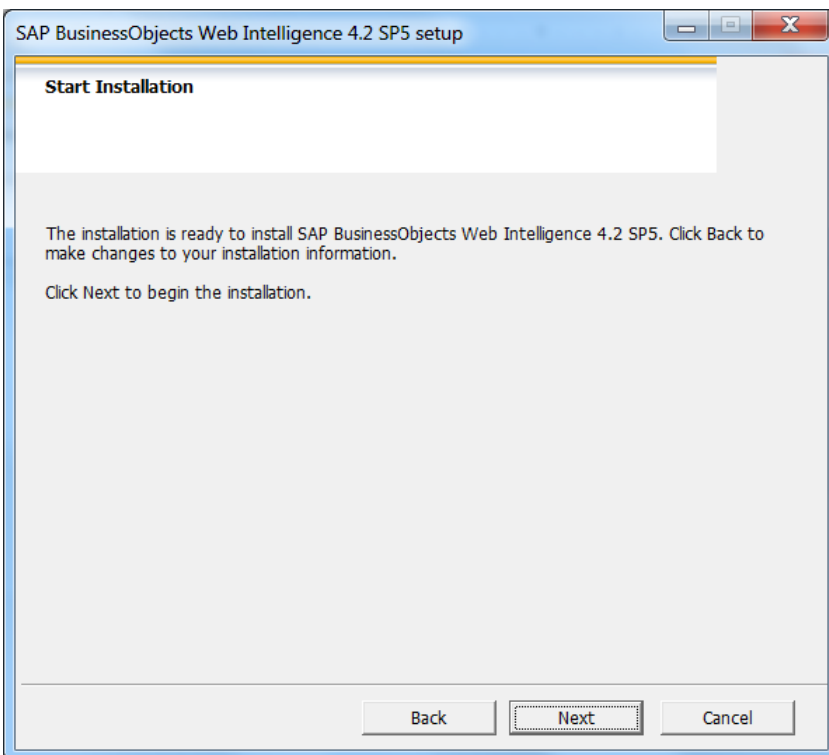
Click **Next** to select the default language package



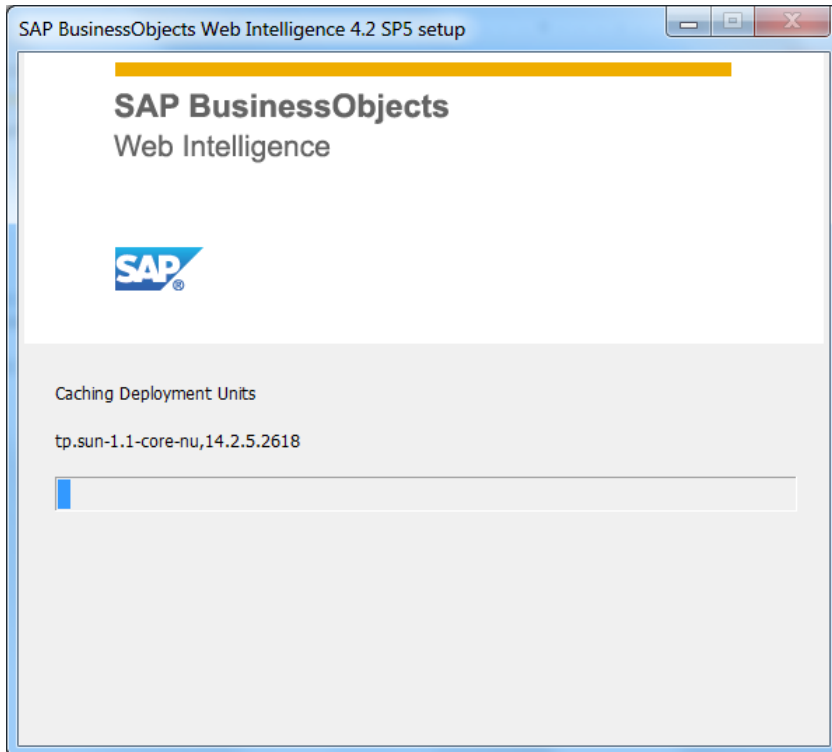
15. Click **Next** to select the default features



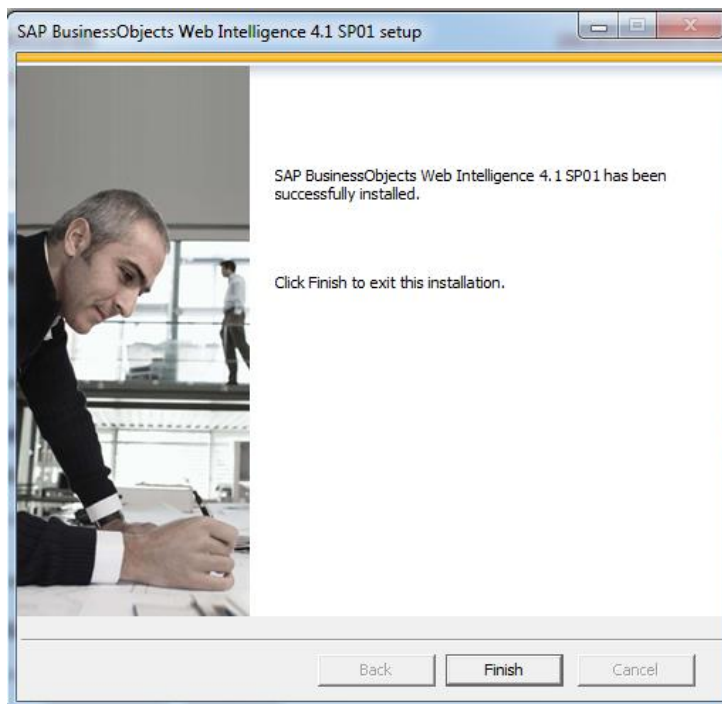
16. Click **Next** to start installation. (The screenshots are examples. The Service Pack (SP) may be different a different number).



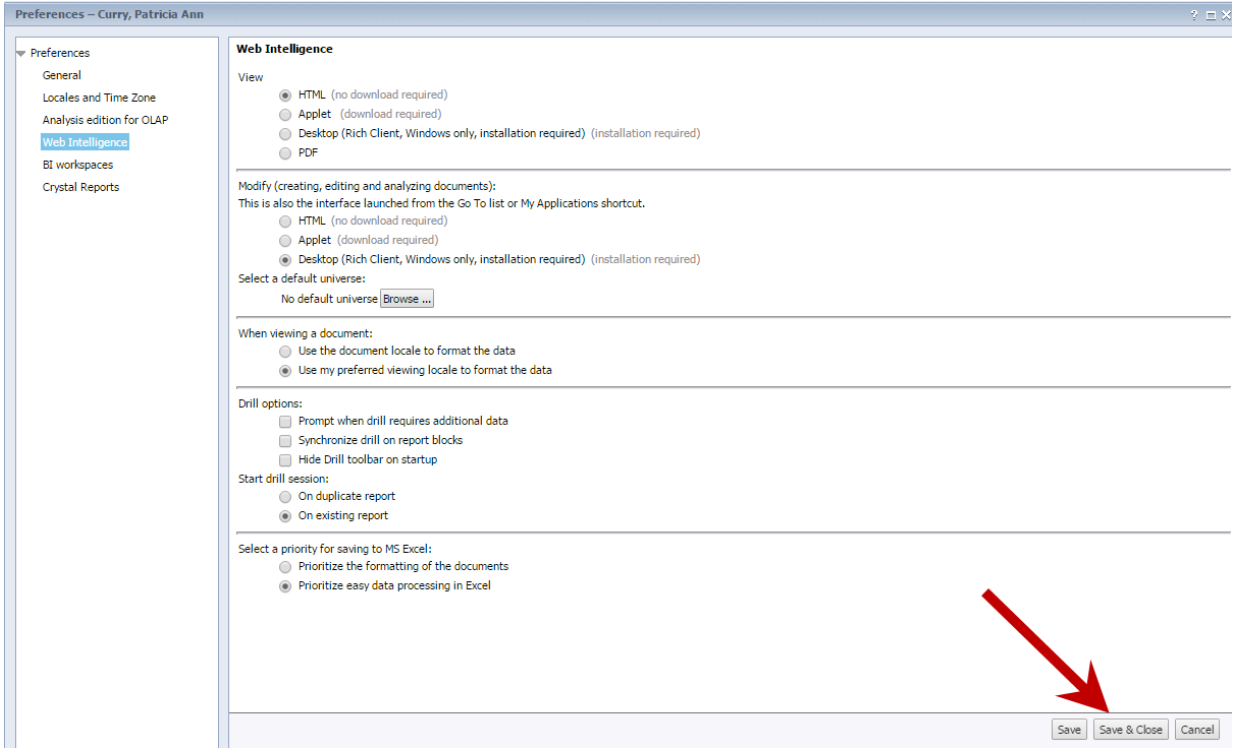
The installation will start.



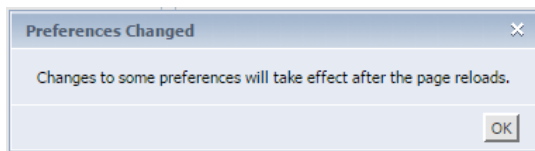
17. When the installation is complete, click **Finish** to exit the installation.



18. When installation is complete, return to EDDIE preferences window. Click **Save & Close** to save your selected preferences.



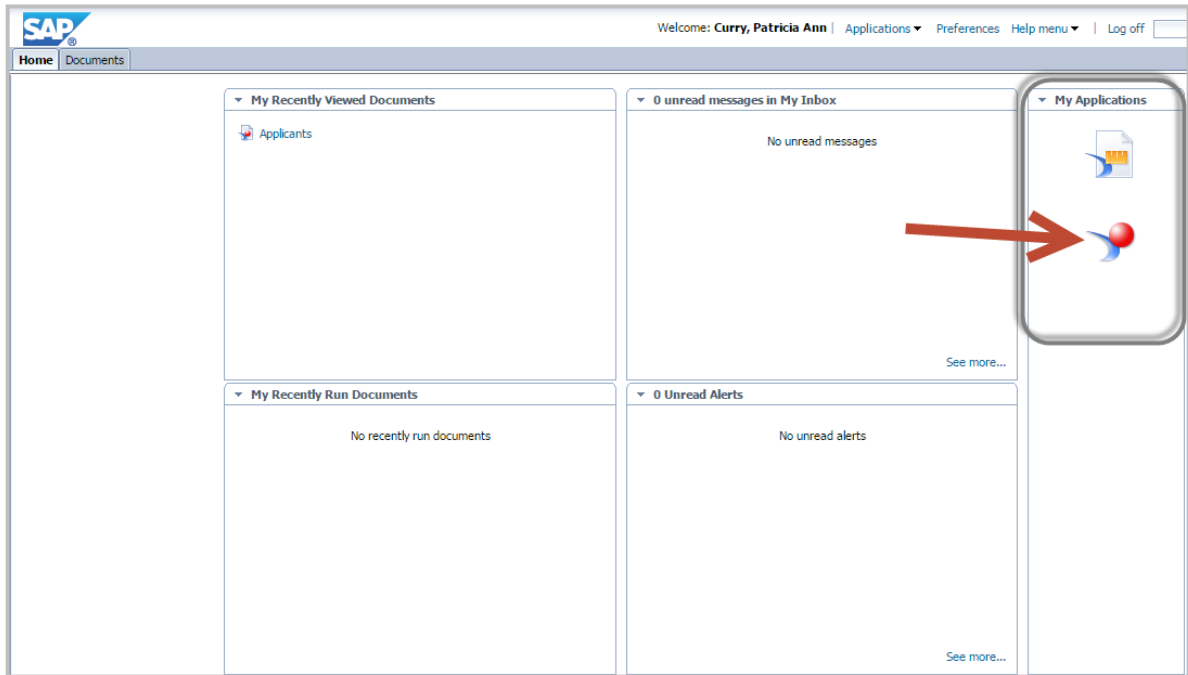
19. The Preference Changed message is displayed. Click **OK**



## Launching Web Intelligence Rich Client for the First Time

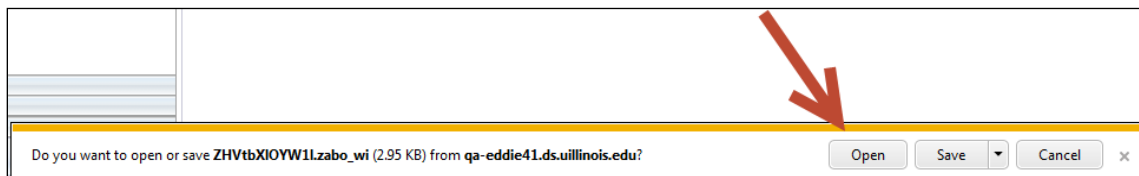
The Web Intelligence Rich Client must be started the first time from the EDDIE. When the program is launched from EDDIE, a file will be downloaded to your computer. This file download is necessary in order to log directly into the Web Intelligence Rich Client program directly from your desktop.

1. From EDDIE home page **My Applications** menu, click the Web Intelligence icon.

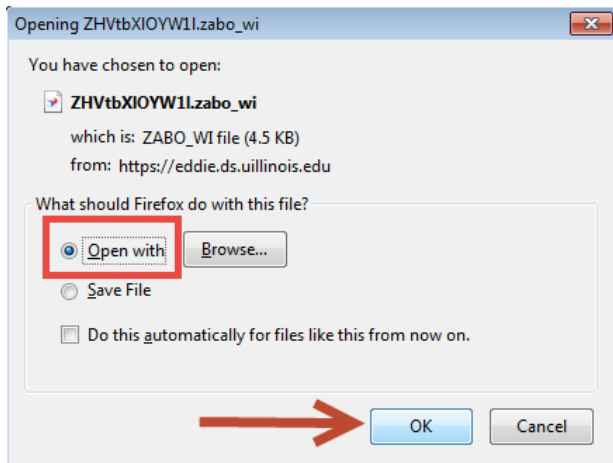


2. When prompted to **Open** or Save the file, **Open** the file.

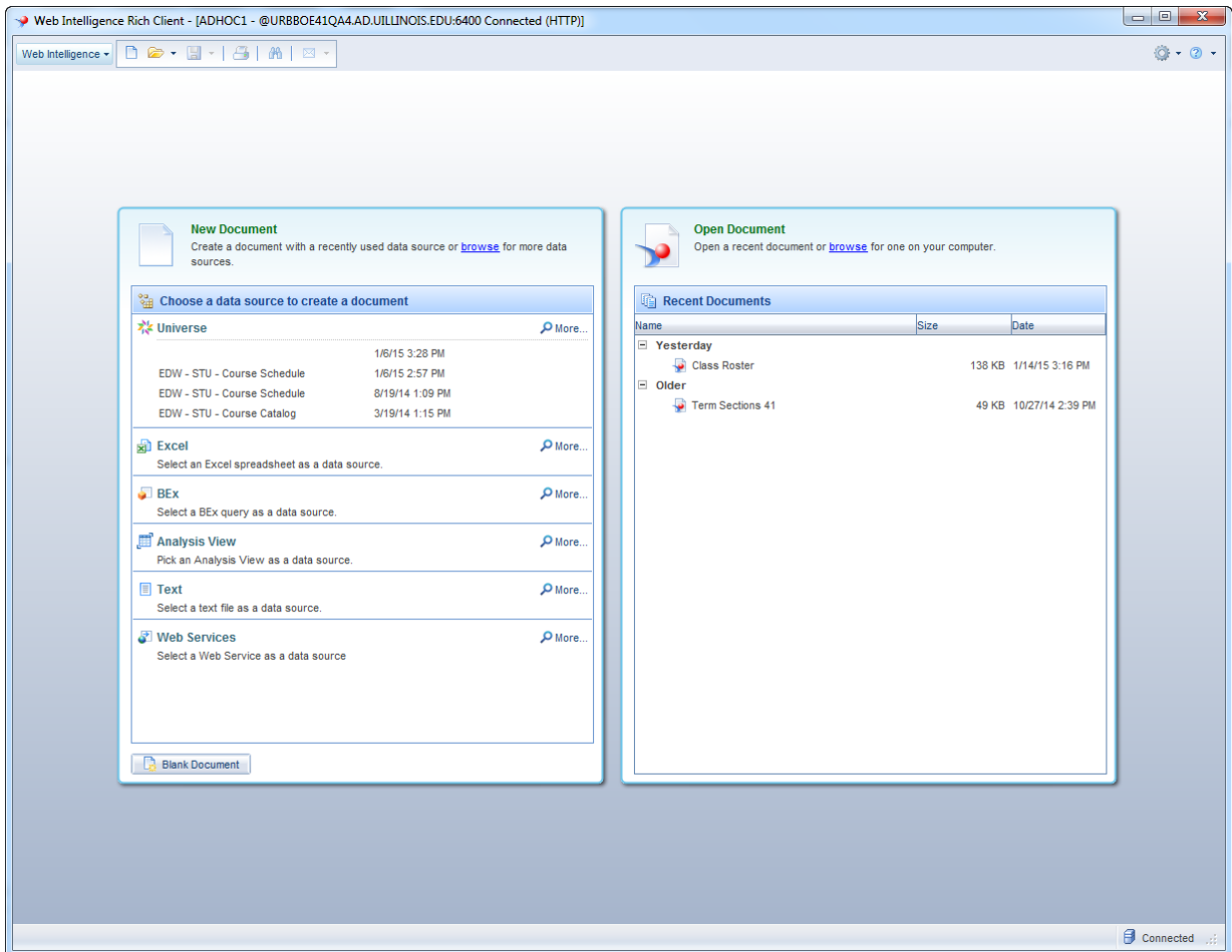
*If using Internet Explorer: Click OPEN*



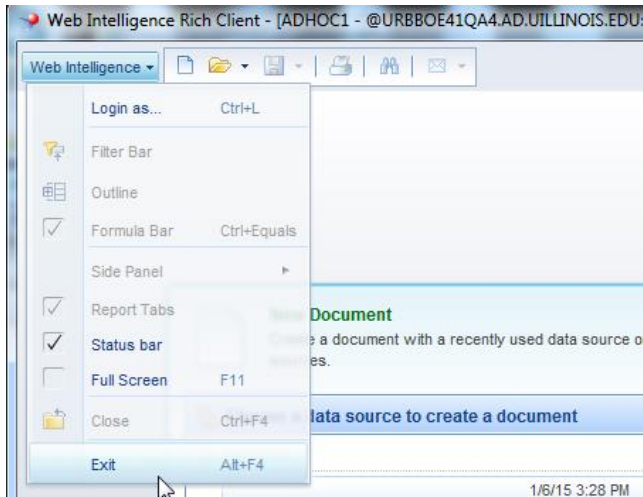
If using Mozilla Firefox: Select OPEN FROM, then click OK. (do not click Browse)



3. Web Intelligence Rich Client opens and the home page is displayed:



4. Exit the program by selecting **Exit** from the **Web Intelligence** drop-down menu, or by closing the window.



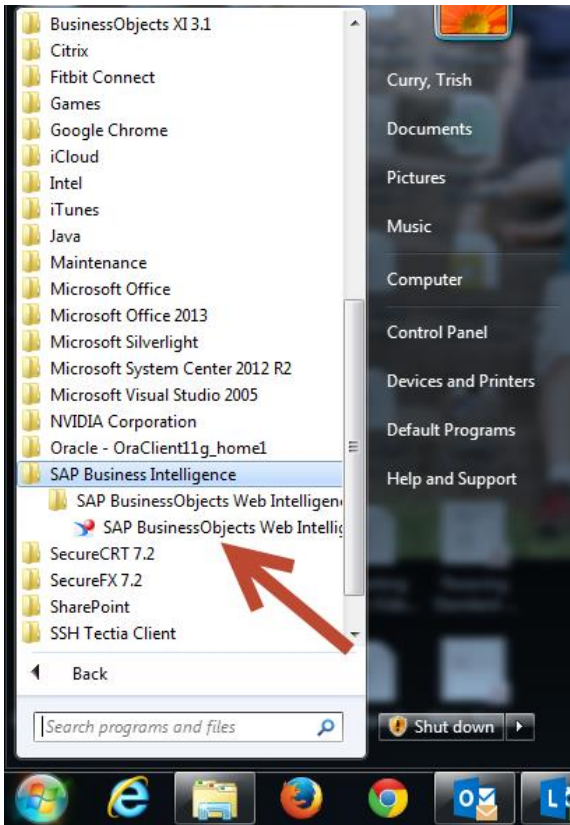
## Opening Web Intelligence Rich Client from the Desktop

Once you have successfully launched Web Intelligence from EDDIE, you will be able to launch the program directly from your desktop.

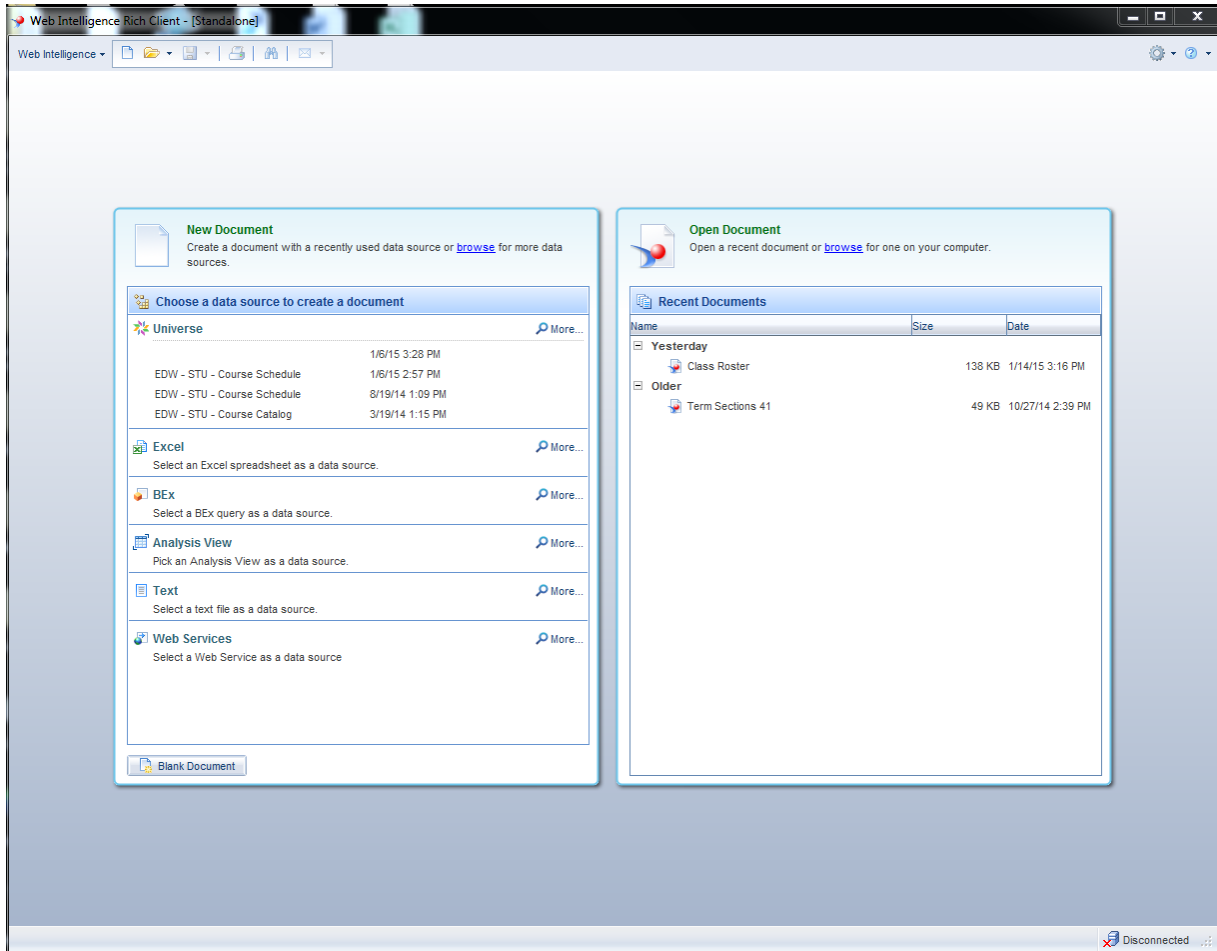
1. Click on your Window's Start menu
2. Select **Programs**
3. Select the **SAP Business Intelligence** folder
4. Select the **SAP BusinessObjects Web Intelligence** sub-folder



5. Select SAP BusinessObjects Web Intelligence Rich Client program



The Web Intelligence Rich Client home page is displayed:



**Note:** You will be in the Web Intelligence program, but you are not yet connected to the server. Follow the additional steps here to connect to the server prior to trying to open or create new documents.

6. Click the **Web Intelligence** menu in the upper-left corner of the window.
7. Select **Login as**

The SAP BusinessObjects Web Intelligence User Identification window is displayed:



8. Enter the following credentials in the User Identification window:
  - a. **System:** Do not change. Will default to correct system.
  - b. **User name:** Enter your **University NetID**
  - c. **Password:** Enter your **NetID Password**
  - d. **Authentication:** Select **LDAP**
9. Click **Log On** button.