

Welcome to Canton & Newton Hills!



Just 8 miles north of Newton Hills

Look inside for:

Restaurants, shopping, entertainment, camping recipes, church information, local activities and camping activities. Look for information on Newton Hills State Park and other State Parks and Recreation areas around the region!



A special supplement to the

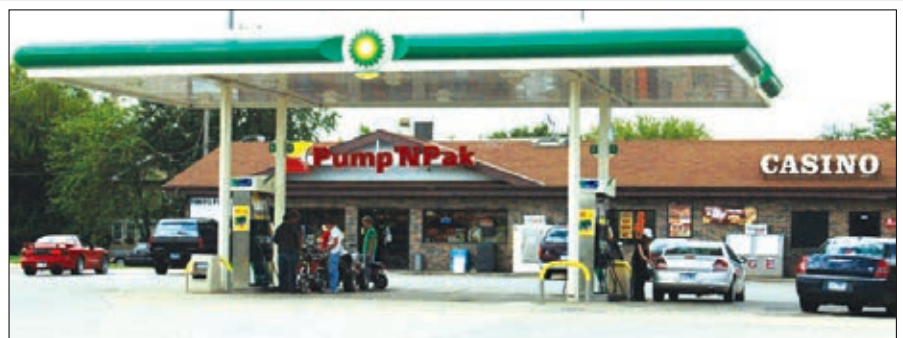
Sioux Valley NEWS



Welcome Campers! **Pump'N'Pak**

110 W 5th Street, Canton, SD • 764-5780

IN A HURRY; CALL YOUR ORDERS AHEAD.



**Largest Selection
of Liquor and
Coldest Beer
Cave in Town!**



- Casino • Hot breakfast items •
- Ice • Wood • Bait Shop •
- Minnows & Nightcrawlers •
- Deli Sandwiches • Wings •
- Chicken Strips • Cheese Balls •
- Fries • Corndogs •
- Philly Cheese Steak •

Over 100 Different Beers!

Breakfast Burritos

Egg Rolls

Breakfast Pizzas

Meat Lovers

Pepperoni Pizza and more

Pump 'N Go VIDEO

Latest Movies

Casino

Diesel

Pop & Treats

504 East 5th, Canton • 764-2921

Local Churches

Located in and around Canton, South Dakota

Bethany Reformed Church

702 W. 7th St.

Sunday Worship Times:
Newton Hills Service 9 a.m.
Canton 9:30 a.m.

Canton Lutheran Church

2nd and Broadway

Worship Times: Saturday 5 p.m.
Sunday 9:30 a.m.

Grand Valley Lutheran Church

28529 SD Hwy. 11

Worship Time: Sunday 9:30 a.m.

Redeemer Free Lutheran

47992 W. 5th Street

Worship Time: Sunday 10:30 a.m.

Trinity, Romsdal, & Lands

Lutheran Church

Moe Parish

47996 292nd St. Rural Hudson
call 987-2348 for worship times.

Resurrection Life Fellowship

220 S. Bartlett

Worship Times: Sunday 10 a.m.

River of Life Community Church

120 S. Main

Worship Times: Sunday 9 a.m. and
10:30 a.m.

St. Dominic Catholic Church

809 E. Walnut

Worship Times: Saturday 4:30 p.m.
Sunday 10:45 a.m.

First Baptist Church

100 E. 3rd Street

Worship Times: Sunday 10:30 a.m. &
6 p.m.

Canton United Methodist Church

621 E. 4th Street

Worship Time: Sunday 10 a.m.

Shopping

You can take a stroll down the streets of Canton for a shopping experience that you will not forget. Whether you are looking for an antique piece to add to a collection, a souvenir for yourself or a gift for a special friend, you can find what you are looking for in Canton.

Beaver Creek Antiques & Collectibles

113 W. 5th St.

Bomgaar's

1130 E. 5th St.

Canton Home & Farm Supply

215 S. Broadway

Dollar General

302 E. 5th St.

Dragonfly Arts

305 E. 5th St.

Haisch Pharmacy & Gifts

303 E. 5th St.

Larson Drapery

203 E. 5th St.

Laura's Lattes

1006 W. 5th St.

Noid's Gaming Parlour

109 S. Main St.

Pump 'N Go Video

504 E. 5th St.

Pump 'N Pak

110 W. 5th St.

Quarry Stone Green House

837 E. 5th St.

Sunshine Foods

715 E. 5th St.

Sturdevants

201 N. Main St.

The Garden Shed Floral

203 E. 5th St.

*Bold print indicates an ad in this section



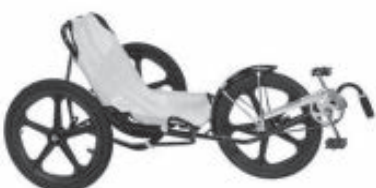
Newton Hills Bicycle Rentals
Provided by Trailshead Rentals LLC
Park Office hours
8:00 AM – 9:00 PM

Bicycle Rental Rates

	<u>½ Hour</u>	<u>1 Hour</u>
Fun Cycle, Banana Peel, Mini Peel & Low Rider Four sizes of recumbent (reclined) three-wheel bikes for single riders up to 220 lbs. Pivot frame features quick acceleration and outrageous hairpin turns. One speed – just point and shoot!	\$8.00	\$13.50
Single Surrey Italian-made "Siretta" surrey easily seats two adults and three children or up to three adults and two children. Great for more leisurely strolls through the park. Two sets of pedals make the trip enjoyable. Single speed. 2 sets of pedals.	\$11.00	\$18.00
Mountain Bike High-Quality Schwinn "Frontier" 21-speed Mountain bikes. Additional hours at \$2/hour. Day rate is \$20 first day/\$10 additional days.		\$5.00

Helmets provided with rentals at No Charge

- Tax included in rental rates
- Parent or legal guardian must sign rental agreement if user is a minor
- Payment by cash or check to "Trailshead Rentals"



Helmets provided with rentals at no charge

Parks, Pool and Playtime

The City of Canton has beautiful parks that showcase many features and amenities. From event stages to volleyball courts, Canton has the perfect place for you! Below is a list of our parks and their features:

Jack Fox Park

Located North of Lincoln County Courthouse and South of Canton Public Library

Special Features: Veteran Memorial and stage with electrical box

Facilities: Playground, Picnic tables, Benches, Vault toilet, Water fountain

Event Stage: The stage on the south side of the public library may be reserved for special events. Bleachers and extra picnic tables may also be placed in the park for special events. A fee is charged for the use of these facilities.

West Ball Park

Located on West Hwy 18 and Howard Street.

Campground: West Ball Park Campground has seven electrical campsites.

Kennedy Ball Park

Located on East Second Street and North Kidder

Special Features: Swimming pool, Two ball fields, Sand volleyball court

Facilities: One large picnic shelter with electricity, Two small picnic shelters, Playground, Picnic tables, benches, two vault toilets and water fountain

Large Shelter: The large shelter in the park can be reserved for special events.

Stand Pipe Park

Located at the corner of North Grant and East Lynn

Special Features: Playground with accessible equipment for children with special needs

Facilities: Picnic tables, Benches, Vault toilet

South Mini Park

Located at the corner of Cedar and Tenth Street

Special Features: Fenced playground

Facilities: Picnic table, Vault toilet, Water fountain

Chautauqua Park

Located can be accessed at 10th and South Broadway or at 10th and South Lincoln

Special Features: Access to the Big Sioux River

Facilities: Picnic Shelter with electricity, Portable Restrooms

Betty Ann Everhart Park

Located on the north side of the 200 block of Fifth Street

For more information and to check availability, contact City Hall at 605-987-2881 or cityhall@cantonsd.org.

We have an Advantage
24 hour cash ATM
Denominations of \$5's & \$20's

24 Hour Drive Up on the North Side of the Bank

Canton's only locally owned bank.

220 E. 5th St., Canton
605-987-2671

See Us For All of Your Financial Needs.



FARMERS STATE BANK
since 1901

Member **FDIC**
EQUAL HOUSING LENDER
Canton, South Dakota

Visit our website at www.cantonfarmersstatebank.com

What's At Your Local State Parks?

• Each year, Newton Hills State Park looks to improve the park, update equipment and continually add to visitors' experiences at the park. From camping to horseback riding, recreation to games, geocaching to hiking, there are multiple outdoor activities just awaiting your exploration.

• **Newton Hills State Park:** Park Staff is always concerned about safety and in 2017 we are really implementing our safety habits. This year, Newton Hills will be installing a storm siren and placing it near the Double Picnic Shelters directly north of the campground. Watch for more trail improvements. Ask at the entrance station for more information on what's new at Newton Hills.

We like to be safe at Newton Hills, but we also like to have fun! That is why we will be renting out Fun Cycles and Surreys (4 wheeled type of bike) out this year! Also, this year at Newton Hills, we will be renting out kayaks at Lake Lakota – as long as the water levels are sufficient.

• **Lake Alvin Recreation Area:** Located directly north of Canton, Lake Alvin Recreation Area is a local favorite to beat the heat and go for a swim or to go fishing! Last winter, park staff repaired the boat dock with new boards – giving it a nicer, safer appearance! Also work is being implemented on the spillway of Alvin Dam to fix any cracks that are starting to surface.

• **Good Earth State Park at Blood Run:** If you haven't heard much about the newest SD State Park in 40 years, you must visit Good Earth just on the southeast edge of Sioux Falls. The park is in its mid-development stages and offers more than 8 miles of trails through some of the most pristine views of the Big Sioux River. The newly dedicated Visitors Center is the finest interpretive center in South Dakota! More to come soon on this new State Park but information including a Trail Guide is available at the Newton Hills Welcome Center or by going online gfp.sd.gov/state-parks/directory/good-earth

• **Summer Employment:** Come out to the park and work while you play! The park accepts applications year round for summer employment. Please ask for John or Jason for more information or send an email to the park: newtonhills@state.sd.us

• **Reminders:** If you are interest in reserving a campsite at Newton Hills and/or Union Grove State Parks, please go online to www.campsd.com or by calling the Reservation Call Center at 1-800-710-2267 – this call center is located in Sioux Falls and is opened 24/7/365.

• **Spirit Mound Historical Prairie:** Located 5 miles north of Vermillion, Spirit Mound offers its visitors with a wide variety of native grasses and interprets the history of the Lewis and Clark Expedition to its visitors. Spirit Mound Historical Prairie is very significant as it is one of the very few areas in the country where visitors can actually stand on the exact site in which Lewis and Clark also stood upon. The park has a picnic area, 1.5 mile hiking trail (round trip) that takes visitors to the summit of the mound and back, and a reconstructed native prairie that resembles what Lewis & Clark may have seen during their visit over 200 years ago.

Canton~On the Web
For the latest updates on Canton and even more information, visit us on the web at:
cantonsd.org and
SiouxValleyNewsOnline.com

Favorite camping recipe

Dowel Biscuit Snacks

These dowel biscuit snacks are cooked over the fire and you will amaze your friends with your new found use for your clothes rod.

Ingredients:

- One can refrigerated tube biscuits
- Pepperoni or Canadian Bacon
- Pizza Sauce
- Shredded Cheese
- Peanut Butter
- Chocolate
- Marshmallows
- 1-1 1/2 inch wood dowel (clothes rod is perfect size)

Directions

Take biscuit out and roll over end of dowel. Push down on the sides until it sticks and roast over fire until golden brown.

Take biscuit off and insert ingredients. For a biscuit pizza, use sauce, pepperoni, bacon and cheese.

For a new take on a s'more, use the peanut butter and large marshmallow (roast marshmallow for extra gooeyness).

Tasting Room Hours:

Wednesday – Friday • 11-7 pm

Saturday and Sunday • 11-6 pm

Free tastings during regular hours.

Live music every Sunday 2 p.m. - 5 p.m.

Check our website for other fun events through the summer.



2368 Able Blvd
Inwood, Iowa
3 mile east of Canton on Hwy 18
712-753-2110
www.calicoskieswine.com

Calico Skies
VINEYARD AND WINERY



Fresh Burgers!

Full Breakfast and Lunch Served

Stop in for a cool treat!
Hard Serve Ice Cream Cones & Shakes

Open Monday-Saturday!
Open 5 a.m. - 3:30 p.m.
Ask about our daily specials

Laurie's Cafe

219 E 6th • 987-5339

FOR ALL YOUR CAR NEEDS

- Unlock service • Jump Starts
- Car Sales • 24 Hour Towing

G&K SUPREME AUTO of Canton, SD

(605) 987-4413 Days • 987-4475 after hours - Kenny

Visit us 24 hours a day @ gksupremeauto.com



\$5 OFF \$30

\$5 off any menu ticket totaling \$30 or more of food/drink items.

~ Limit of one coupon per table or group ~

OPEN 4:30 P.M. TUESDAY-SUNDAY
LUNCH 11 A.M.-2 P.M. TUESDAY-FRIDAY
CLOSED MONDAYS

215 E. 5th Street
Canton, SD
(605) 987-9000

Not Valid with any other offer • Expires Dec. 31, 2016

Newton Hills Events, Entertainment & More

A quiet, shady campground draws thousands of campers each year to Newton Hills. Campers can stay in the campground, in one of eight camping cabins or the group lodge.

The four-bedroom lodge is a favorite of large groups, particularly of families and groups of hunters or anglers. The lodge features two full baths, a full kitchen, an upper deck and lower walk-out patio. The lodge is furnished. Guests need to bring bedding, bath towels, personal items and food. Contact the park for more information.

After a day on the trail, horseback riders can head for the park's equestrian camp. The trail camp provides facilities for both day and overnight park users, which include vault toilets, water, large parking areas and day and overnight horse corrals.

If you are planning a family get-together, the park has 20' x 20' and 20' x 40' canopy tents available for rent. Please contact the park office for price/details.

Nature Observation

If you're interested in bird-watching, Newton Hills is definitely the place to be. More than 200 species of birds visit the area each year. White-tailed deer, wild turkeys marmots, rabbits, red and gray fox and squirrels are also found within the park.

Archery deer and turkey hunting are allowed within the park during designated seasons, but uncased bows and firearms are not allowed within the park's campgrounds and picnic areas. Please refer to the hunting handbook for more information. State parks are closed to hunting from May 1 through Sept. 30 of each year

A six-mile multi-use trail leads through dense oak and basswood forest. Woodland Trail is listed in the registry of National Recreation Trails.

Sioux River Folk Festival

Newton Hills hosts a popular musical concert in conjunction with the Friends of Traditional Music. The Sioux River Folk Festival, is held annually on the first weekend in August. To learn more about the Sioux River Folk Fest and the Friends of Traditional Music, please visit the website, www.fotm.org.

FestiFALL/CandleLight Walk

Held each year on the first Saturday in October.

The popular FestiFALL event is attended annually by people of all ages, and features many family activities including arts and crafts booths, kid's games and bluegrass music. Visitors are encouraged to bring in their own decorated or carved pumpkins for judging.

The Candlelight Walk leads visitors along 2.2 miles of candle-lit trail through the deep woods of Newton Hills. The trail will be solely lit by candles and carved pumpkins. Throughout the weekend, campers are encouraged to decorate their campsites with a fall theme.

Summer Worship Service through Labor Day 9 a.m.

Movies every Fri/Sat night-9 p.m. at amphitheater

Nature & Recreational Programs

Newton Hills hosts an array of interpretive, educational and recreational activities during the summer season from Open House Weekend through Labor Day. Each program is geared for families with young children and will expose participants to the various natural and cultural features of the park and surrounding area. All of the programs are free to the public; however, a valid park entrance license is required on all vehicles entering the state park.

The amphitheater in the campground is the featured location for most of the programs. At least 3 programs are held every Saturday afternoon. Educational films are presented Friday and Saturday evenings at 9 p.m. The park also hosts a non-denominational church service every Sunday morning at 9 a.m.

The park also has a number of exciting lawn games, horseshoes, game balls, fishing poles, etc., to check out at the welcome center. GPS units are also available to go and search the park and find a geocache...what's a geocache? Check out www.geocaching.com for more information.

Please find nature programs and special event information listed under the 'events calendar' online at www.gfp.sd.gov. "What's Happening at Newton Hills" weekly emails are also sent out by the park each week. Please send an email to newtonhills@state.sd.us to get on the mailing list.

For any questions please contact the park at 605-987-2263 or email newtonhills@state.sd.us, and website: www.gfp.sd.gov. Campground and trail maps are available on the website as well as campsite and facility photos.



Escape The Weather

Come in and see our huge selection of gifts sure to cool you off!

Unique Gifts

for all occasions
Willow Tree Figurines,
Garden Ornaments,
Purses, Jewelry, Baby
Items, Inspirational
Gifts, Pictures, Candles,
Diffusers, Sale Room
and much more.

Get your
sunglasses,
sunscreen, bug
spray and anti-
itch creams.

- Photo Kiosk
- Film Developing (sent out)
- Batteries

If you forgot it, we have got it! Pharmacy, photo, gifts and more.

**HAISCH
PHARMACY &
GIFTS**
987-2661 • 303 E 5th,
Canton, SD

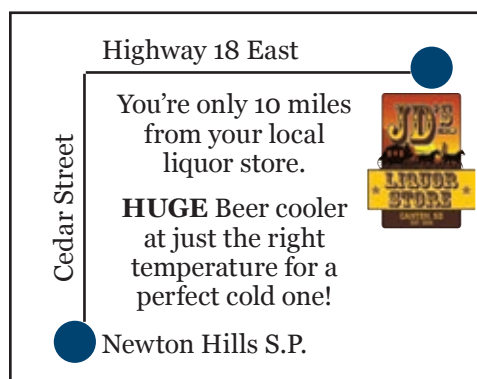
Mon-Fri: 8:30-6:00 p.m.; Sat: 8:30-4:00 p.m.

HUGE SELECTION OF LIQUOR & WINE



Drive Thru or Walk In

LIQUOR • BEER • WINE • ICE
TOBACCO • SODA • SNACKS & MORE!



Hours

M-Th 12-8:30
Fri & Sat 10:30-10
Sun 12-6:30
1000 E. 5th, Canton
605-987-0081

Library Summer Schedule

225 N. Broadway

Summer Hours

Monday, Tuesday, Wednesday and Friday - 10:00 – 5:30

THURSDAY – 10:00-7:00

Saturday – 9:00-1:00

Newspaper End Rolls are now available at the Sioux Valley News!

Great for fire starting!

213 E. 5th St., Canton



BAR & GRILL
CANTON
SOUTH DAKOTA

On Sale
and Off Sale
Liquors

- Happy hour 2 to 7
- Daily Food Specials
- Full Kitchen
- Pool
- Darts

On the Rocks

111 S. Main, Canton, SD

605-558-1111

and more!

Monday-Thursday 2 pm - 2 am

Friday, Saturday and Sunday 11 am to 2 am



TEXT 9872WIN to 51660

and get \$5 in Free Play!

Be sure to reply "Yes" to receive NOIDS Updates & Exclusive Offers right to your phone!

NOID'S GAMING PARLOUR



SENTEXT SOLUTIONS

You may receive up to 4 messages per week. Message and data rates may apply when sending & receiving text messages. Messages sent from automated system. Consent not required to purchase goods and services. Text STOP to 51660 to opt-out. Text HELP to 51660 for assistance or call 800-211-2001. To view our Terms and Conditions & Privacy Policy, please visit www.sentextsolutions.com/privacypolicy.

*Must be 21 to play video lottery

While in Canton you'll notice our small town hospitality & enjoy a variety of culture and recreation.



• Have a picnic or let the kids play in one of our five parks.

Pictured are Stand Pipe Park, above, Kennedy Park, top right and the municipal swimming pool, both close to the downtown area of Canton.

• Take in the rich history of Canton through its restored buildings and homes.



Welcome Newton Hills Campers to Canton!

• Cool off at the municipal swimming pool.



For more information on the City of Canton visit our website at www.cantonsd.org

Historic sights beyond the trails



Lincoln County Courthouse

Canton Facts

Population
3110

Elevation
1273

Lincoln County First Settler
Early 1860s

Lincoln County Seat
Canton

The city of Canton was organized in 1866 when permanent settlers first came to Canton. Canton is one of the oldest communities in the Dakota Territory. The name Canton was chosen because it was believed that the townsite was located directly opposite of Canton, China, and organizers thought the Chinese spelling meant Gateway. Canton was known as Gate City for many years. In 1868, many Norwegian immigrant families moved to Canton to settle, which more than

doubled the population of Lincoln County.

Canton is located just 16 miles southeast of Sioux Falls and six miles north of Newton Hills. The downtown area is lined with shopping, antiques, entertainment and dining.

Only 11 years after the establishment of Canton, in August of 1872, the first issues of the *Sioux Valley News* were published. It was one of the first newspapers published in Dakota Territory. The original press was owned by Col. Arthur Linn, who brought the press to Canton by wagon.

The railroads in Canton have always been key to the agricultural business. The Milwaukee, St. Paul and Pacific Railroad crossed through Canton in 1880. The first train came to the Canton Depot on July 2, 1879 and gave the city a direct railroad service to Chicago. The railroad helped the city of Canton grow immensely within three years. The railroads are still in use today and continue to be critical to the agricultural business in Canton. The original depot building is in the process of being restored and is home to the Canton Visitor Center. The center is open weekdays from 9 a.m. to 4 p.m.

Besides the depot building, Canton is home to many historical buildings and structures. Between 1880 and 1883 many churches were built in Canton. In 1910 after construction was done on Canton Lutheran Church, it was considered to be the largest Lutheran Church west of Minneapolis, Minn. The church celebrated its 140th Anniversary in 2008. The church was restored in 1982; however, it still looks the same as it did in its early years with granite stone and stained glass windows..

The Old Main building of Augustana Academy is an example of the Richardson Romanesque Architecture with the cut granite, arched openings and massive size. Construction

began in 1901 and was dedicated in 1903. The Academy was open until 1971 when it was closed. The building now has 21 one-bedroom



Old Main Building of Augustana Academy

apartments and five two-bedroom apartments.

The Canton Ski Hill, which brought over 5,000 fans to Canton in 1925 for a National Tournament was turned into a ski jump in 1912. Skiers were able to cover a distance of 1/8 mile at up to 100 miles per hour on the jump. The 275 foot vertical drop of the hill and tower attracted many people to tournaments on the hill. The last tournament to be held on the hill was in 1936. In 1944, wind blew the historical ski tower down. A plaque has been placed along Highway 18 on the east side of town to mark the area where the ski tower was.

The Kennedy Mansion is a famous landmark in Canton. The house was completed in 1917 and is now on the National Register of Historic Places. Cornelious Kennedy, original owner of the home, built much of the house himself. The home is 5,400

square feet with an additional 2,700 square feet in the attic and over 3,000 square feet in the basement. The current owner has restored the mansion to preserve the history of the home. The home is now a private residence.

Newton Hills State Park is home to the Historic Canton Caretaker's Home. The historic house was moved from the Sanford Canton-Inwood Hospital grounds to Newton Hills in 2006 for use as a group lodge. The lodge can sleep up to 12 people comfortably and is fully equipped with furniture and kitchen supplies.

The original woodwork and brass light fixtures of the caretaker's home have been restored in the house and walls were moved to make the house handicapped accessible. The lodge is priced at \$240 per night. With heating and air conditioning, the house will be comfortable in hot and cold weather.

Lincoln County recently remodeled the courthouse in Canton, which has been around since 1875. The original courthouse began as a small building and a three and a half story addition was added in 1889. In 1876, a cannon was built and put in front of the courthouse for the Fourth of July Celebration. The cannon was fired every Independence Day until 1872 when a crack was discovered. The original cannon has been placed on a cement foundation where it remains as a monument in front of the courthouse.



Historic Caretaker's Home

Visitor Information

Canton Depot / Canton Visitor Center

600 W. 5th St.

The historical Canton Depot is now completely restored. The building is home to the Canton Visitor Center where travelers can pick up information about Canton.

Hours: Monday – Thursday 9-4



Canton Depot Visitor Center

Sanford Canton-Inwood Medical Center, 400 N. Hiawatha Dr.

Sanford Canton-Inwood Medical Center is located on E. Highway 18 and offers a full complement of healthcare services for all your family practice needs. Physicians are available for routine and emergency care. With a 24 hour emergency room, help is just around the corner.

Did You Know?



To avoid burning your marshmallow while roasting it over an open fire, dip it into water first. This allows your marshmallow to brown more evenly and it will be less likely to burn!

Lewis

Family Drug

Where you'll feel better.
Even before you take your prescriptions.

605-987-4284

Store Hours: M-F: 8:30am-6pm | Sat: 9am-1pm | Sun: Closed

715 E. 5th St., Canton (located inside Sunshine Foods)

CANTON
HOME & FARM
SUPPLY

**Charcoal • Lighter Fluid • Bug Spray • Sun Screen
Tent Stakes • Propane Tanks • Camp Fuel • Camp Stoves
Grills (Gas, Charcoal, Traeger & Pitt Boss) • RV Supplies • Tents
Sleeping Bags • Coolers • Citronella Candles and much more!**

Stop in Canton Home and Farm Supply for your camping needs!

Only 8 miles north of Newton Hills on Broadway in Canton.

215 S. Broadway • Downtown Canton • (605) 764-6131

HOURS: MONDAY – FRIDAY • 7:30 A.M. - 7 P.M.

SATURDAY • 8 A.M. - 6 P.M. ~ SUNDAY • NOON TO 4 P.M.

WWW.CANTONHOMEFARM.COM

How to Hike Safely

National parks are great places for outdoor enthusiasts to enjoy some of their favorite activities. Many such parks allow visitors to camp out after a day spent rafting or kayaking on the water, making these locales the ideal vacation spots for families or groups of friends who share a love of the great outdoors.

Hiking is among the more popular activities enjoyed at parks across the globe. Hikers of all ages and skill levels can enjoy trails of varying degrees of difficulty, all the while taking in picturesque landscapes that often cannot be found in developed urban and suburban areas.

But as much as hiking can be enjoyed even by novice outdoor enthusiasts, this rewarding activity also can be dangerous. Hikers often find themselves in remote locations where cellular phone signals tend to be weak, which can be troublesome,

the trails. When hiking with a group or even with only a friend, make sure no one hikes faster than the slowest hiker. This ensures that no one will get lost and that each hiker has someone there to seek help should an accident or injury occur.

- Share your itinerary with someone staying behind. Even if you are hiking with others, it's best to share your itinerary with someone who is not joining you on your trip. This way someone can alert authorities to you, and your fellow hikers' direction if you get lost on a trail and cannot find your way out. When sharing your itinerary, share your schedule as well, telling friends who are staying behind to alert the authorities if you do not return or make direct contact with them by a given time.

- Start early. Embarking on a hike early is beneficial in a variety of ways. Nature is beautiful at all times of the day, but part of the joy of hiking is taking in all of the beautiful landscapes, which are easier to see during daylight hours than at night. Hiking during the day is also safer, as it's easier for hikers to make their way on trails when they can see where they're going than at night, when many hiking trails are cloaked in darkness. Scavenging animals also may be more prevalent after sundown. Finally, hiking also is legal during daylight hours, whereas many parks ban hiking once the sun goes down.

- Know the weather forecast. When planning a hiking trip, know the weather forecast for the day or days you plan to hike. Expect cooler temperatures, even if the forecast is calling for a beautiful warm day. Hiking trails are often surrounded by tall trees, which makes it difficult for warm sunlight to illuminate trails and warm up hikers. So pack an extra jacket or coat, ideally a rain coat that can serve double duty should it start to rain.

- Carry water and snacks. Staying hydrated can make a long or challenging hike easier on your muscles, so be sure to bring plenty of water, which also can quench your thirst throughout your hike. Bring some snacks along as well. Snacks should provide you with energy to continue your hike, so leave behind snacks like potato chips or pretzels and pack your bags with fresh fruit, granola, protein bars, or trail mix.

Hiking is a great way to enjoy the great outdoors. But even veteran hikers must take safety precautions to ensure their trips are as safe as they are enjoyable.



even when hiking in relatively crowded parks. That's why it's important to take the following precautionary measures when hiking.

- Never hike alone. Many outdoor enthusiasts enjoy escaping from the daily grind and getting some alone time with Mother Nature. While some outdoor activities can be safely enjoyed alone, others, including hiking, should never be done without a friend in tow. There are numerous benefits to hiking in pairs or groups, not the least of which is having someone there to go for help should anyone suffer an injury on

Canton Municipal Swimming Pool

424 North Sanborn, Canton, SD 57013 • (605) 987-5433

The municipal swimming pool features two slides and one low diving board. The water depth is from two feet to ten feet. The diving board and large slide are located where the water depth is ten feet. Another small slide is located where the water depth is 3 1/2 feet. The facility also features a wading pool for children under the age of six. The pool is open 7 days a week, weather permitting 12 to 5 p.m. and 6 to 8 p.m.



Good Earth State Park has a new addition this year, a state-of-the-art Visitors Center. In this Center you will find collections of artifacts, an authentic replica of a Native American lodge, displays, interpretive areas, a movie theater and hundreds of other items on display. After the dedication on May 19, the Center was opened to the public after much anticipation. Work completed over the past year also includes several miles of trail improvement, outdoor picnic areas, paved parking, a new entrance just North of Springdale Lutheran Church and much more.

Five years ago, a walk at Blood Run Nature Area with South Dakota Parks and Wildlife Foundation Development Director Dick Brown, then-Director of South Dakota Department of Game, Fish and Parks Doug Hofer, Governor Dennis Daugaard, the Lincoln County Commissioners and naturalist Edward Raventon showed the potential of the area now known as Good Earth State Park at Blood Run.

This is the largest Oneota cultural site discovered to date in the upper Midwest. There are two other significant Oneota cultural sites located respectively in southwest Iowa and central Missouri.

There are several different displays that have been incorporated into the visitors center museum area. A full-size reproduction of a lodge that would have been found during the Oneota occupation gives a glimpse of how the homes were built and what it may have been like inside the lodge. The lodge was built using traditional materials, from the buffalo hides that cover it to the sinew used to secure the poles holding the lodge together.

As Game, Fish and Parks, tribal representatives and others worked on the exhibits, movie and other features, it became evident Good Earth S.P. would utilize more than just the visual sense.

Walking into the visitors center, guests will be greeted by a smoky, light aroma that immediately reminds one of tanning hides or campfires. Walking from the parking lot to the East entrance of the Visitors Center gives you the opportunity to hear birds, animals and

Good Earth State Park at Blood Run at a Glance:

Visitor Center Hours: Mon-Wed. 9 a.m. - 5 p.m.; Thurs. - Sun. 9 a.m. - 7 p.m.

Park Hours: 6 a.m. - 11 p.m.

Directions: From Canton: Drive North on Dakota St. from Lynn St. and continue North to Spring Creek Golf Course. Then drive two miles North until you see the Good Earth sign. From Sioux Falls: Head West on 69th St. and continue East to Hwy 135 and turn South. The old entrance south of the park is closed.

the blowing prairie grasses. The smells of the outdoors also fill the air as more and more land is reclaimed into prairie. The ability to touch gives all ages an appreciation for the way of life hundreds of years ago.

A special feature that has been months in the making is a 20 minute film that will loop during the day. This film, called "Awakening the Silent City" is a full-feature professional film shot on-site. The title goes back to a map drawn by R.F. Pettigrew, in which he referred to the settlement as the Silent City.

The amount of historical facts presented in the film alone will give visitors a background to pull from as they move through the Center.

Learn more about Good Earth State Park at Blood Run by visiting <http://www.gfp.sd.gov/state-parks/directory/good-earth/>
Phone: 605.987.2263 • Physical Address: 48072 270th St., Sioux Falls, SD 57108
GPS Coordinates: 43.475595, -96.5942

Where the Treasure Hunt is ON!
BRING IN THIS AD RECEIVE 10% OFF YOUR ORDER!

YOUR EVERYTHING STORE!
OPEN ON HOLIDAYS!
AND NEW SUMMER HOURS!

We now have 2 LEVELS of vintage "FUN"!

The trading post
Thrft & Gift Consignment Shop

Inwood, IA
1806 240th St. Located by Hwy 18, 4-way stop and car wash.
712-753-2000
inwoodtradingpost4u@gmail.com

Mon. 1-5:30
Tues. 1-5:30
Wed. 10-5:30
Thur. & Fri. 10-5:30
Sat. 9-5

Decor *
Clothing *
Accessories *
Antiques & Vintage *

Map Data ©2014 Google

Six Pack & a Pound
Only \$9.39 with coupon
Expires December 31, 2017

NOW SERVING BREAKFAST!
OPEN AT 8 A.M.

TACO JOHN'S
The Fresh Taste of West-Mex

704 E 5th, Canton
987-2410



You play

We're just minutes away.

You've planned. You've packed. You're ready for the great outdoors. Needing a physician during your stay wasn't in the plan. At Sanford Health, we are minutes away from Newton Hills and ready to treat whatever it is that's put your plans on hold.

Sanford Canton-Inwood Medical Center

On weekends and holidays our Emergency Room is staffed by medical providers 24 hours a day. For more information, please call (605) 764-1400. If you have an emergency, please call 911.

Sanford Canton Clinic

Our staff and physicians can provide medical care for:

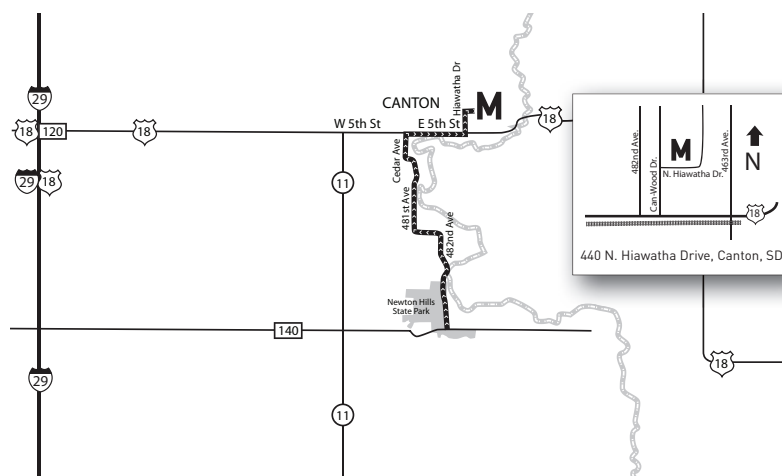
- Minor burns
- Eye injuries
- Bug bites
- Allergic reactions
- Sunburn
- Stitches
- Broken bones
- Asthma
- Sprains
- Heat exhaustion

Clinic Hours:

Monday – Friday: 7:30 a.m. – 5 p.m.

Saturday: 8:30 a.m. – Noon (acute care only)

To schedule an appointment, please call (605) 764-1500.



SANFORD
Canton-Inwood