

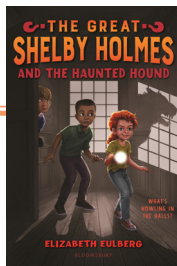
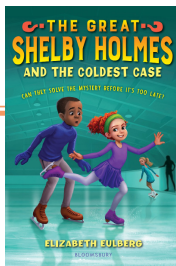
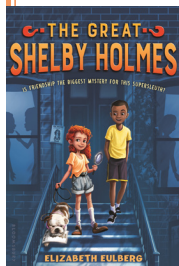


WELCOME TO ~THE GREAT~ SHELBY HOLMES DETECTIVE KIT!



Use this packet
to become a great
detective like me,
Shelby Holmes!

Or just to have
fun like me,
John Watson!



THE GREAT SHELBY HOLMES

BY ELIZABETH EULBERG

BLOOMSBURY 

PAGE 1

Have you lost something? Design your own missing poster!

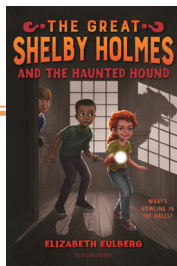
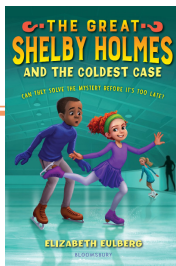
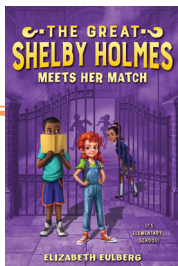
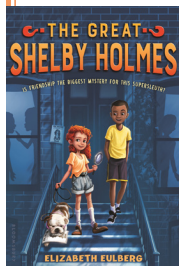
MISSING

Draw a
picture of
the missing
item

LOST SINCE: _____ LAST SEEN: _____

Contact _____ with information

REWARD:



THE GREAT SHELBY HOLMES

BY ELIZABETH EULBERG

BLOOMSBURY

PAGE 2



Solve the secret code!

Each letter of the alphabet stands for another letter.

C D E F G H I J K L M N O P Q R S T U V W X Y Z A B
A B C D E F G H I J K L M N O P Q R S T U V W X Y Z

YG ECRVWTGF VJG RGTR!

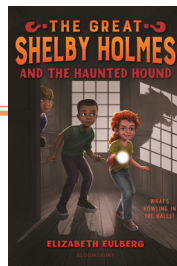
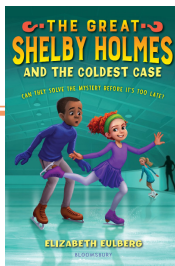
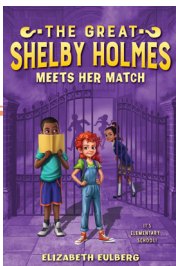
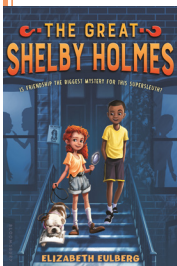
-----!



Here's a hint: in this code, each G on the top line is an E

Now create your own code!

A B C D E F G H I J K L M N O P Q R S T U V W X Y Z



SOLUTION: WE CAPTURED THE PERP!



THE GREAT SHELBY HOLMES

BY ELIZABETH EULBERG

PAGE 3

BLOOMSBURY 

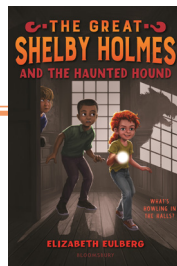
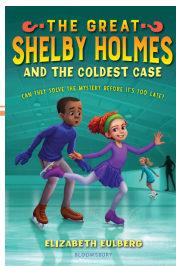
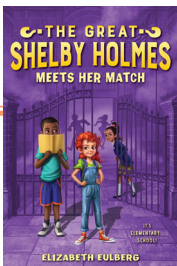
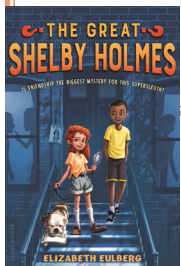


Can you find all the missing words?



DETECTIVE • ELEMENTARY • SHELBY • WATSON
INVESTIGATE • SLEUTH • FRIEND • CASE

F	E	T	Y	I	V	E	S	U	E	Q	V	O	P	L	M
H	T	E	N	E	D	L	E	S	J	B	U	D	A	C	H
T	H	I	D	E	T	E	C	T	I	V	E	N	S	E	E
H	C	N	T	H	M	M	S	A	K	M	I	I	H	N	I
I	A	A	P	M	I	E	R	E	A	J	P	T	E	T	H
D	T	G	S	A	N	N	U	R	I	U	U	W	N	K	D
O	S	H	U	E	C	T	L	O	G	E	T	D	O	M	A
U	S	H	R	G	U	A	I	D	L	S	J	G	S	A	N
R	F	I	E	N	L	R	N	S	K	Z	B	K	T	B	J
S	R	M	C	L	E	Y	T	V	U	L	A	I	A	D	E
P	I	P	H	I	B	E	U	N	P	B	E	M	W	I	I
E	E	L	T	F	T	Y	P	I	A	E	P	V	H	M	F
I	N	E	E	I	A	R	N	P	N	I	I	L	L	E	G
N	D	D	I	N	V	E	S	T	I	G	A	T	E	D	X
G	U	E	A	C	S	O	Z	I	E	G	H	E	A	F	M
L	C	S	S	E	T	B	E	K	D	A	D	H	M	L	I



THE GREAT SHELBY HOLMES

BY ELIZABETH EULBERG

BLOOMSBURY

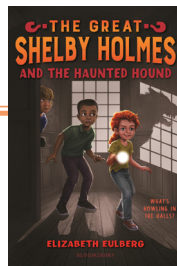
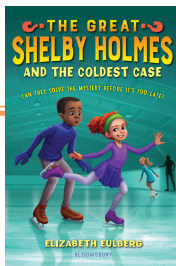
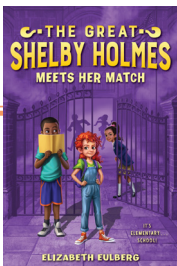
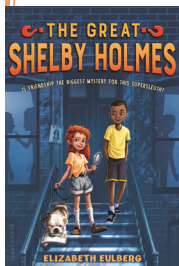


PAGE 4

Scavenger Hunt

Team up with a friend and go on a scavenger hunt at your library or bookstore or in your home! How many of these things can you find ?

- ☐ A watch
- ☐ A picture of a dog
- ☐ A candy bar
- ☐ A basketball
- ☐ A question mark
- ☐ A backpack
- ☐ A magnifying glass
- ☐ A book with an author whose name is Watson
- ☐ A copy of *The Great Shelby Holmes*



Can you unscramble this secret message?

Unscramble each word in this sentence to uncode the secret message!

METIMSOES

_O__T__E__

UYO EEND

O _E_D

A DEFIRN OT

_ _R_ _N_ _ _

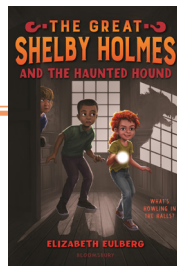
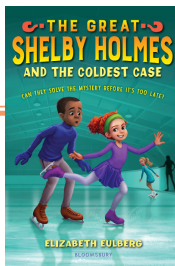
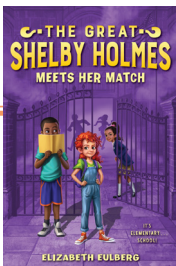
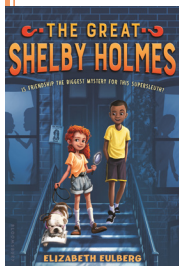
VEOLS HTE

_ _L_E_ _H_

SEAC.

_ _S_ .

SOLUTION: SOMETIMES YOU NEED
A FRIEND TO SOLVE THE CASE.



THE GREAT SHELBY HOLMES

BY ELIZABETH EULBERG

BLOOMSBURY

PAGE 6





Record your observations in Watson's journal.

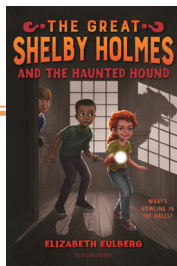
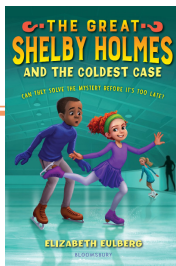
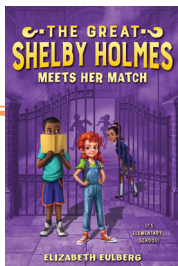
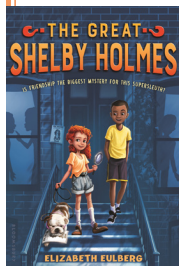


Date:

Time:

Place:

Suspicious Activity:



THE GREAT SHELBY HOLMES

PAGE 7

BY ELIZABETH EULBERG

BLOOMSBURY

THE GREAT SHELBY HOLMES FACT OR FICTION?

Shelby Holmes lives at 221b Baker Street with her parents and older brother, Michael.
FACT!

John Watson has diabetes.
FACT!

Shelby's mom served as an Army doctor in Afghanistan.
FICTION! Watson's mom is the former Army doctor.

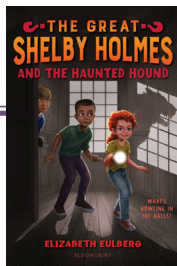
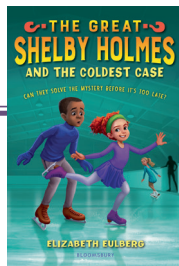
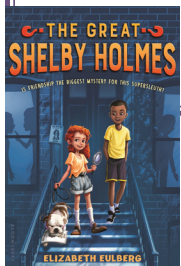
John Watson had lived at four different army posts before moving with his mother to Harlem.
FACT!

Shelby has a French bulldog named Sir Arthur.
FICTION! Sir Arthur is an English bulldog, hence the "Sir" as Shelby believes her dog deserves to be a member of the Order of the British Empire.

Shelby is the great-great-great-granddaughter of Sherlock Holmes.
FICTION! In The Great Shelby Holmes universe, Sherlock Holmes doesn't exist.

At the Harlem Academy of the Arts, Watson's focus is writing while Shelby's is music.
FACT!

Shelby spends her school lunch break hanging out with Watson and his friends.
FICTION! Shelby doesn't want to waste any "precious research time."



**THE GREAT
SHELBY HOLMES**
BY ELIZABETH EULBERG

PAGE 5
BLOOMSBURY



Shelby often tells Watson to “not simply see, but observe.”

FACT!

Shelby’s brain attic is filled with all sorts of information, from geology to sporting terms.
FICTION! Shelby doesn’t believe sports knowledge is worthy of space in her brain attic.

Detective Lestrade of the New York City Police Department often calls on Shelby for advice.

FICTION! Lestrade finds Shelby more of a nuisance . . . even though Shelby often offers information that turns out to be helpful.

Watson writes about his sleuthing adventures with Shelby for school, as well as on a blog.
FACT!

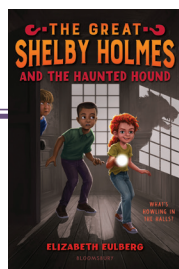
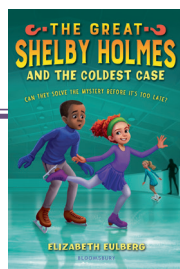
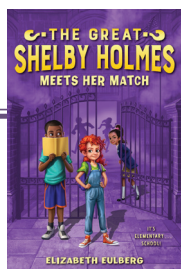
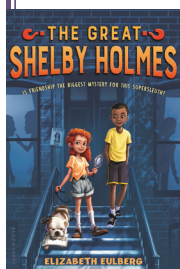
Shelby and Watson often solve cases using something called “deductive reasoning.”
FACT!

Becky Rathbone is the niece of 221 Baker street’s Landlady Mrs. Hudson.

FICTION! *Basia* Rathbone is one of Shelby’s many aliases, along with Petunia Cumberbatch and Roberta Downey. (Bonus fun fact: all of Shelby’s—and Watson’s—aliases come from names of actors who have portrayed Sherlock Holmes—or Doctor Watson—on screen.)

Moira Hardy is as smart as Shelby.

FICTION! Nobody is as smart as Shelby . . . at least according to Shelby. ;)



**THE GREAT
SHELBY HOLMES**
BY ELIZABETH EULBERG

PAGE 6
BLOOMSBURY





Watson's Spooky Halloween Playlist



This is Halloween

Citizens of Halloween, Nightmare Before Christmas

The Addams Family Theme Song

The Addams Family Soundtrack

Monster Mash

Bobby "Boris" Pickett

Hedwig's Theme

Harry Potty and the Sorcerer's Stone

Ghostbusters

Ray Parker, Jr.

I Put a Spell on You

Jalacy "Screamin' Jay" Hawkins

Spooky, Scary Skeletons

Andrew gold

Halloween Theme Song

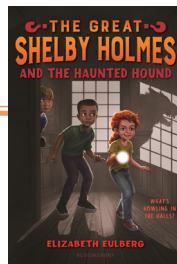
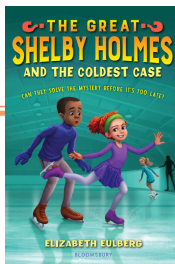
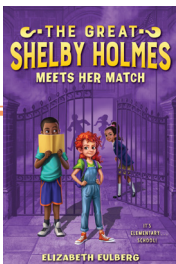
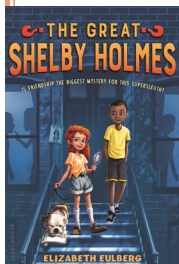
John Carpenter

Casper the Friendly Ghost

Little Richard


Graveyard Theme

Vince Guaraldi, It's the Great Pumpkin, Charlie Brown



THE GREAT SHELBY HOLMES

BY ELIZABETH EULBERG

BLOOMSBURY 

PAGE 8

