

# Welcome to SOAR



# Parent Orientation Leaders

## **Tom Dulovic**

**Hometown:** Farmingville, NY

**Year:** Senior

**Major:** Mathematics



## **Erica Marano**

**Hometown:** Glastonbury, CT

**Year:** Junior

**Major:** Music and Sound Recording



# Our Departments, Programs & Services

- Campus Access Services
- Career Development
- Counseling and Psychological Services
- Dean of Students
- Dining Services
- Graduate Student Services
- Health Services
- Intercultural Relations
- International Services
- Residential Life
- Student Activities

## Programs

- Campus Ministry
- Community Service





# Division of Student Affairs

## Our Mission...

**The mission of the Division of Student Affairs at the University of New Haven is to engage students to develop personally, intellectually and professionally through diverse experiential learning opportunities.**



# Student Affairs Learning Goals

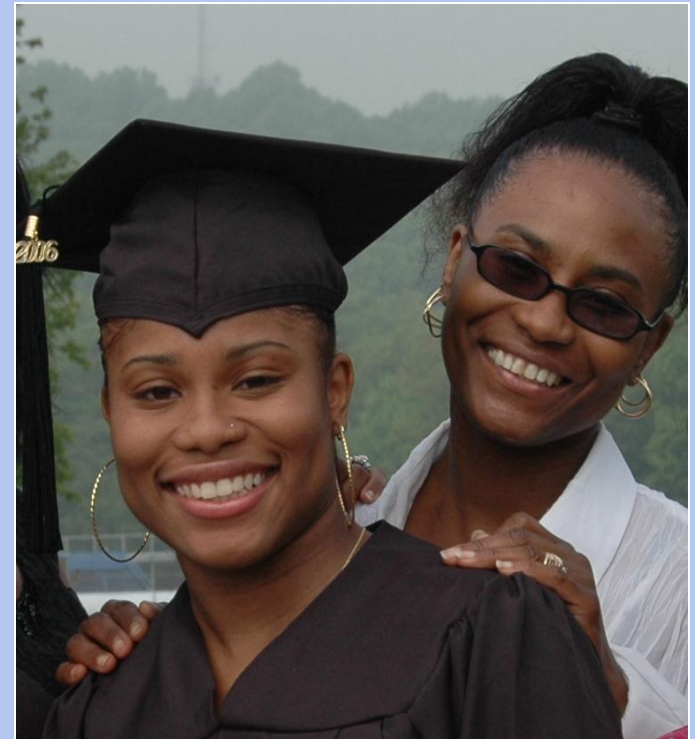
- Understanding of Self and Appreciation of Others
- Interpersonal and Intrapersonal Competence
- Civic Responsibility and Engagement
- Cognitive Complexity
- Practical Competencies which Lead to Academic and Personal Achievement

# How Parents Can Support Their Students

- Encourage your student to seek assistance when he/she is having a problem

## Web Resources

- Welcome to Your Home on Campus
  - Student Handbook
  - University Website
- Students need to begin to take initiative and solve problems on their own



# UNH and You

- Contact information form in packet
  - University Communications
  - Emergency Contact Information





- Meal Plans
- Equivalency
- Social Media
- Services Offered
- Locations
- Dietary Needs
- Contact information



**Lawrence Lisborg**  
Director of Dining Services  
**Jackie O'Hanlon**  
Marketing Specialist  
**John Gervasi**  
Executive Chef



# Meal Plan Information

- **All** residents are required to have a Meal Plan
  - Except for students in Regency, Savin Court, & Main Street
- Each Plan has 2 parts
  - Board Meals
    - Breakfast & Dinner Mon.-Fri.
    - Brunch & Dinner on weekends
    - These are “All you-care-to-eat” meals
  - Declining balance just like a debit card
  - Use during lunch at The Marketplace and at Jazzman’s Café & Bakery, The Charger Café, Sandella’s, Nrgize Lifestyle Cafe, Pandini’s, Grill 155



(Confetti Cupcakes W/ Vanilla Frosting)

# Meal Plan Information

- **Charger Unlimited - \$2550**

- Required for all Freshmen residents
- Gives 1<sup>st</sup> year students unlimited access to board meals
- \$525 in Dining Dollars
  - About \$44 a week
  - Covers Lunch Monday–Friday & Snacks



(Baked Chicken Parmesan W/ Brown Rice & Roasted Vegetables)



# Meal Plan Information

- All Commuters and Resident Sophomores, Juniors, & Seniors may choose from the following plans:
  - **Weekly 10 - \$2500**
    - 10 board meals per a week & \$565 in Dining Dollars
    - Great for non-breakfast eating residents & full day commuters
  - **Flex 150 - \$2500**
    - 150 board meals per a semester & \$590 in Dining Dollars
    - Perfect for students that work
  - **Flex 75 - \$2075**
    - 75 board meals per a semester & \$825 in Dining Dollars
    - Ideal for anyone living in an apartment

# Meal Plan Information

- Casual Meal Rates At The Marketplace
  - Prices individuals not on a meal plan will pay during a Board Meal (“all you-care-to-eat”)
  - Breakfast - \$6.20
  - Brunch - \$9.30
  - Dinner - \$10.40
  - Average Cost of 3 Meals Per Day = \$26



(Seared Cajun Mahi With Roasted Corn and Rice)

# Meal Equivalency

- In place of an “All you-care-to-eat” board dinner meal at The Marketplace, students may choose from several “combo meals” available or may choose any items on the menu up to \$5.80.
  - Anything over \$5.80 will be taken from the Dining Dollars account
- Counts as board meal for the week
- Can only be used:
  - 10am-11am Monday-Friday at Sandella’s
  - During board dinner everyday at Sandella’s, Grill 155, & Pandini’s



(Pandinis: Pesto Chicken Caesar Salad)





# Social Media



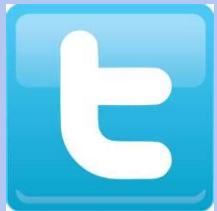
**Facebook**

[UNH Sodexo Campus Dining](#)



**YouTube**

[UNH Sodexo](#)



**Twitter**

[UNH Dining](#)



**Instagram**

[UNH\\_Sodexo\\_Dining](#)



**UNH Dining App**

Hours, Menus, Specials



**Jazzman's Café App**

Order Beverages & Baked Goods!



Check In At Each Location On **Foursquare!**





# Services Offered

- Catering

- Offers simple parties & bountiful buffets, to elaborate dinners events
- For more information or to arrange an event email [catering@newhaven.edu](mailto:catering@newhaven.edu)



- Student Employment

- Earn extra income while on campus, make friends, have fun, and learn something new
- Flexible hours & Competitive wages

- Internships

- Promotions Coordinator & Sustainability

- Mystery Shopper Program

- Students become our eyes and ears while earning a free meal



# Services Offered

- Gifts From Home
  - Dinner
    - Pizza Party, Box 'O Tenders, 2ft Hoagies, Roasted Chicken
  - Snacks
    - Mixed Goodie Bags, Cookies & Milk, Brownies
  - Birthdays & Special Occasions
    - ¼ Sheet Cake, Basic & Specialty Cupcakes, Rice Krispie Treat Sheets, Cake Pops
- Fill My Fridge
  - Grocery & Snack Delivery To The Residence Hall



Does This  
Look Like  
Your Student's  
Fridge?

# Locations

- The Marketplace
  - Bartels Hall
    - Hometown, grill, deli, pizza, salad bar, sushi, vegan & vegetarian, & grab n' go
- Jazzman's Café
  - Bartels Hall
    - Coffee, tea, espressos, cappuccinos, smoothies, freshly made baked goods, salads, and sandwiches
- The Charger Café
  - Marvin K. Peterson Library
    - Starbucks Coffee, tea, espressos, cappuccinos, smoothies, freshly made baked goods, salads, and sandwiches





# Locations

- Sandella's
  - Botwinik Hall
    - Flatbread sandwiches, paninis, quesadilla's, pizzas, & salads
- The UNH C-Store
  - Sheffield Hall
    - Beverages, groceries, organics, sushi & HB items
- NRgize Lifestyle Café
  - Recreation Center
    - Smoothies, fresh squeezed juice, wheat grass shots, & select breakfast items





# Locations

- Grill 155
  - New Hall
    - 1/3 lb burgers, grilled chicken, fries, onion rings, quesadillas, milk shakes
- Pandini's
  - New Hall
    - Old world Italian pizzas, pastas, salads, sandwiches, & desserts



# Dietary Needs

- Vegans & Vegetarians
  - Stations at The Marketplace & options available at all dining locations
- Allergies
  - Marketplace menus include ingredient list
  - Nut warning signs
  - Gluten Free products available
- One on One RD and Chef Consultation Available

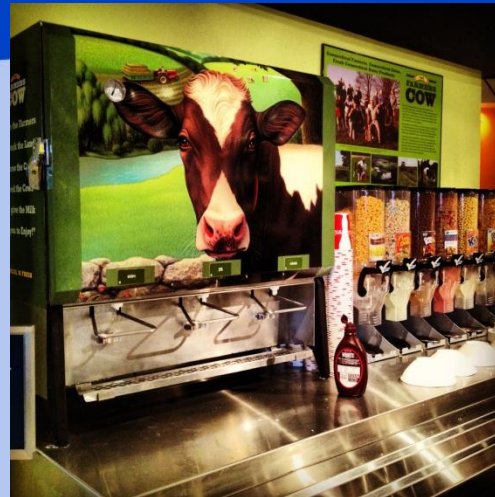


(Mediterranean Couscous Wrap)



# Sustainability Initiatives

- Trayless Dining
  - 3 years
- Local Ingredients
  - Farmers Cow
  - CT Farm To Chef
- Composting





# Contact Us!

**Phone:** (203) 932-7185

**Fax:** (203) 931-6085

**Email:** [DiningServices@newhaven.edu](mailto:DiningServices@newhaven.edu)

**Website:** [www.newhaven.edu/dining/index.html](http://www.newhaven.edu/dining/index.html)



# Health Services

- **Requirements**
  - Physical Form
  - Immunizations
  - Meningitis (residents)
- **Health Insurance**
  - Copy of private insurance card
  - UNH insurance acts as secondary insurance
  - Primary insurance for those not covered





# Health Services



- **Services**

- 3 Registered Nurses
- Medical Assistant
- 1 APRN
- Contract Physicians
- Weekly Woman's Clinic
- Over the counter Medicine
- Starter Antibiotics

# Health Services



- **Hours**
  - Open Monday-Friday, 8:30am -5pm
- **After Hours**
  - Resident Assistants
  - Local Walk in Clinics
  - Campus Police
  - Available 24 hour per day “Nurse Advice Line” toll free 1- 866 -525-1955.
- **Other**
  - First Aid Kits!!

Campus Police

# Introduction

## \* Department of Public Safety & Administrative Services

\* Ronald M. Quagliani – Assoc. V.P.

- \* Campus Police
- \* Emergency Management
- \* Environmental & Laboratory Safety
- \* Fire Safety
- \* Transportation, Parking
- \* Conference Services, Food Services, Mail Department

Campus Police

# Introduction

## University of New Haven Police Department

- ✦ Police Chief – Mark DeLieto
- ✦ Assistant Chief – Donald Parker
  
- ✦ UNHPD Provides full-service police protection
  - ✦ 24 hours a day
  - ✦ 7 days a week
  - ✦ 365 days a year
  
- ✦ UNHPD's police authority is granted throughout the city of West Haven.
  
- ✦ A strong partnership with the West Haven Police Department is maintained through daily activity and training exercises.

Campus Police

# Introduction

A close working relationship and strong partnerships are maintained with:

- \* Student Affairs
- \* Athletics
- \* Office of Residential Life
- \* Health & Counseling Services
- \* STUDENTS

## Safety is Everyone's Responsibility

We expect students to be aware and to have a personal safety program.

- Campus Safety Report



# Personnel

- \* UNHPD is comprised of:
  - \* 17 Sworn Police officers
    - \* All officers are POST Certified
    - \* Many came to UNHPD with years of experience from various local and state police departments.
  - \* 6 State certified Dispatchers
  - \* Parking Compliance Officers (non-sworn)
  - \* Student Patrols through the Work Study/Bursary Program
- \* Partnerships with local law enforcement as well as private security

Campus Police

# Services

- ✦ High visibility Patrols by:
  - ✦ Marked UNH Police Vehicles
  - ✦ Mountain Bike
  - ✦ Foot
- ✦ Enforcement includes:
  - ✦ State Laws
  - ✦ West Haven City Ordinances
  - ✦ UNH Policy
  - ✦ Parking



Campus Police

# Services

## \* Calls for Service Include:

- \* Criminal Complaints
- \* Medical Assistance
- \* Fire Alarms
- \* Burglar Alarms
- \* Securing and Unlocking Buildings
- \* Motor Vehicle Lockouts



Campus Police

# Safety



- \* Emergency Phones
- \* 24 Hour Dispatcher
- \* C.C.T.V.
  - \* 24 hr. video monitoring
- \* Card Access
- \* NIFAST
  - \* Online Fire safety course.
- \* EmergenSeeU – App



1

You launch EmergenSeeU.



### Live Video and Audio

Once EmergenSeeU is launched, it streams live video and audio to a secure server that is instantly reviewed by public safety.

### GPS location

EmergenSeeU's unique Geo-Fencing technology ensures that first responders will be alerted when the incident develops within your preset area.

### Real-Time Texting (Chat)

Dispatchers communicate in real time with you in threatening situations when calling or speaking might endanger them or others.

### Virtual Escort

Feel safer walking across campus with the Virtual Escort. Just set the timer when you leave, and if it expires, EmergenSeeU automatically launches, sending video, audio and your location directly to public safety for assistance.

### Instant Alerts

A distress email with audio/visual alerts are directly received at a monitoring station when an incident occurs.

### Contacts Alerted

Email alerts are instantly sent to public safety officials and/or your personal contacts.

### Broadcast Alerts

Mass broadcast alerts to an entire network can prevent you from walking into harms way.

### Personal Profile

EmergenSeeU offers the option to any user to provide profile information. This can include a current picture or any critical information such as medical conditions that you feel would be helpful to public safety to effectively help you whenever an incident is started.

2

Public safety receives live video, audio, and GPS location.



3

Public safety responds effectively.



EmergenSeeU sends live video, audio, and GPS to public safety as well as your personal contacts in times of distress.



Campus Police

# Safety



**R.A.D.**

**Rape Aggression Defense For Women**



Presented by the University of New Haven Police Department



**R.F.M.**

**R.A.D. For Men**



Presented by the University of New Haven Police Department

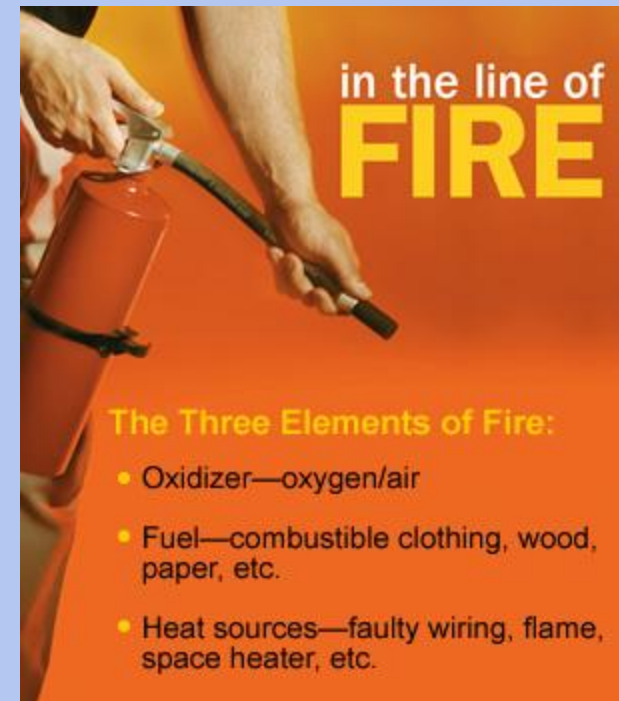
- R.A.D. (Rape Aggression Defense) Self Defense Classes.

- 12 Hour Basic Self Defense course for Females only.
- 3 hr. Safety lecture
- 6 hrs. hands on Self Defense Training
- 3 hr. Simulation

- R.A.D. (Resisting Aggression with Defense) for Men Self Defense Classes

- 12 Hour Basic Self Defense course for Males only.
- Same format as Female class with lecture, training, and simulation

- Lab Safety Training
- AED Program
- Fire Safety
- Chemical Spill Program
- Certified Emergency Response Plan
  - ERT
  - CERT,
  - ROTC
  - Building Wardens



Campus Police

# Emergency Notification



✳ Public Address System

✳ Email Notifications

✳ EVERBRIDGE  
AWARE

✳ Message Boards



# Campus Police Transportation



University of New Haven



Home | Mobile Access | Accessible Version | UNH Shuttles Info

## Routes

- Apartment Shuttle
- Downtown Shuttle
- Post Road Shuttle



## Courtesy Vans

### Services to:

- Off Campus Housing
- Train Station

## Dattco Shuttles

### Services to:

- Off Campus Housing
- Downtown New Haven
- Boston Post Rd. / Milford Mall

## TransLoc

- Online Shuttle/Courtesy Van







# Campus Police Transportation



University of New Haven

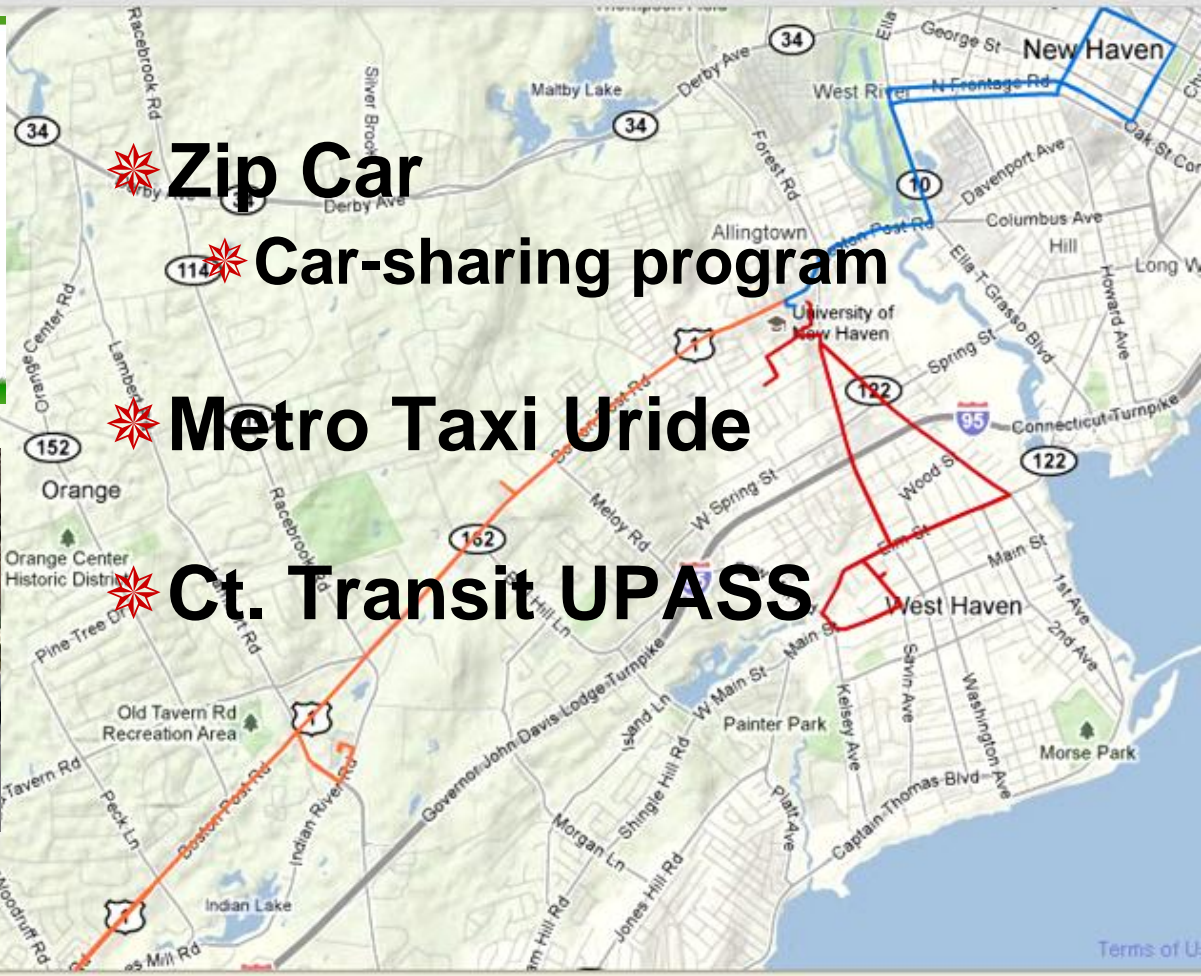


Home | Mobile Access | Accessible Version | UNH Shuttles Info

## Routes

- Apartment Sh
- Downtown Sh
- Post Road Sh

Zipcar 101 @ University of New Haven





# Dean of Students Office



Becky Johnson  
Associate Vice  
President for Student  
Affairs/Dean of  
Students



Ric Baker  
Associate Dean of Students

- Student Life
- Student Conduct Expectations
- Student Involvement

# Student Conduct Expectations

- **Alcohol Policy**
  - Students under the age of 21 may not possess, transport, consume or be in the presence of alcohol
- **Substance Abuse Policy**
  - The manufacture, distribution, possession, sale, or use of any illegal or controlled substance, including misuse of prescription drugs is a violation of University regulations.
- **Sanctions for Violations of the Alcohol & Substance Use Policy**
  - Range from a warning, fine, parental notification, attendance at an Alcohol Education Class, completion of a drug education module or an individual substance use assessment, referral to SATU, removal from the residence halls, and possible suspension or expulsion from the University.
- **What Can You Do?**
  - Talk with your son/daughter about the choices they will face as a college student

# AlcoholEdu for Parents

- Suggestions for discussing topic of alcohol
- Access to course students will be taking
- Resources on alcohol's impact on the body



The screenshot shows the AlcoholEdu for Parents website. At the top, there is a banner with the AlcoholEdu logo, a photo of a smiling family, and navigation icons for 'OUTSIDE CLASSROOM', 'FAQ', 'TECHNICAL HELP', and 'LOG OUT'. Below the banner, the page is titled 'PART 1' and 'Intro'. The main content area is titled '1. An overview of AlcoholEdu for College.' and contains the following text:

**Why a course on alcohol for college students?**

There is a common misconception that *most* students in high school drink. The truth is that only about 50% of students report that they drank before coming to college.

Many students who did not drink in high school *start* drinking in college. In fact, 70-80% of college students nationwide report drinking by the end of the first semester in college. About one in five college students are drinking in dangerous ways.

AlcoholEdu is not a "just say no" course. We take an open, non-judgmental approach to educate, promote, and help guide healthy decision-making with a focus on *planning*. **Our goal is to help your son or daughter make safe decisions about alcohol before problems occur.**

**What if my son or daughter isn't one of the ones drinking in college?**

If your student is committed to not drinking in college, he or she will still learn valuable information to stay safe and help friends who *do* drink.

On the left side of the page, there is a navigation menu with the following items: 'Module 1: Where Do You Stand?', '>Parents Course Intro', 'Introduction', 'Getting Started', and '4'.

# Counseling & Psychological Services



Deborah Everhart, Ph.D., Director

Sheffield Hall, Lower Level

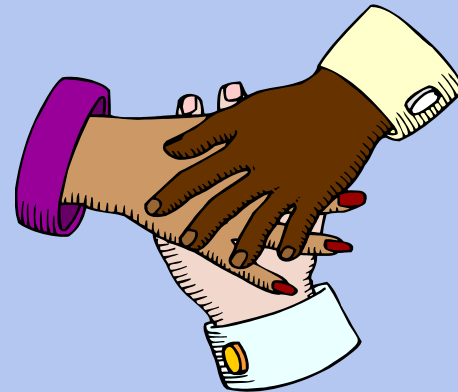
**(203) 932-7332**

# Campus Ministry

- Hillel
- Ambassadors for Christ



Martin O'Connor  
Campus Minister





# Intercultural Relations

We are a diverse community!!



# Office of Intercultural Relations



Wanda Tyler  
Director  
Intercultural Relations

*What is the purpose of the  
Office of Intercultural  
Relations?*

The Office of Intercultural Relations assists the University in promoting cultural diversity, awareness, and sensitivity throughout the campus community. Its programs, services and activities promote cultural identity and understanding within a multicultural environment.

# Student Activities

## **Coordinate Campus Wide Events:**

- SOAR – Summer Orientation, Advising, & Registration
- Opening Day
- Welcome Week
- Family Day
- Alcohol Awareness Week
- Thanksgiving Celebration
- Spring Weekend
- University Awards Ceremony
- Senior Week
- Educational Programming
- Leadership Development Programming

**Encourage your student to step forward and get involved!**



**Greg Overend**  
Director of Student  
Activities



**Lisa Savarese**  
Assistant Director  
of Student Activities



**Andrew Mayer**  
Student Activities  
Office Coordinator

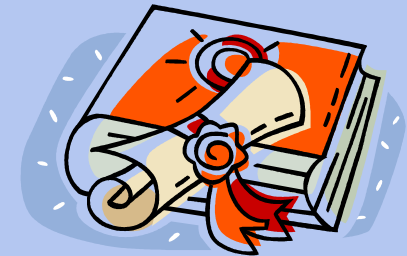
# Student Activities

## Advise Student Clubs and Organizations:

- USGA – Undergraduate Student Government Association
- SCOPE – Student Committee of Programming Events
- Chariot Yearbook
- Charger Bulletin (Newspaper)
- Greek Life (Fraternities & Sororities)

## Coordinate Leadership and Educational Programs:

- LEAD – Leadership Education Achievement & Development Program
- Educational Programming
- Senior Series



**Encourage your student to step forward and get involved!**

# Student Activities

- Oversee student programs and events and 165 clubs and organizations
- Coordinate co-curricular transcript
- Supervise operations of Info Desk and BSAC
- Coordinate master calendar of events for campus organizations
- Oversee Charger Connection: the Facebook for campus involvement
- Advise Greek Life

**Encourage your student to step forward and get involved!**





# Community Service Office

- Coordinates community service events and opportunities that serve the Greater New Haven community
- President's Public Service Fellowship
- Alternative Spring Break
- Thanksgiving Food Collection and Donation



# Campus Recreation



## The David A Beckerman Recreation Center



The facility features:

- Over 6,000 sq ft of fitness space
- 2 Basketball/Volleyball courts
- 1 Multi Activity Court
- 2 Racquetball Courts
- 2 Group Fitness Studios
- Nrgize Juice Bar
- Space for ping pong and lounging

Fall hours: M – Th 6:00am – 11:30pm

Fridays 6:00am – 10pm

Saturdays 10am – 8pm

Sunday 11am – 10pm

For up to date information always check

[www.newhaven.edu/chargerrec](http://www.newhaven.edu/chargerrec)

# Campus Recreation Overview



- Programs and facilities are managed by students. As a result we are the largest student employer on campus.
- Through employment and participation we offer leadership opportunities, outside of the classroom activities, and a healthy late night alternative.

# ChargerREC Intramural Sports (RECSports)

- **Intramurals are offered all year long and are split into 4 seasons. This fall there are several activities planned for season 1 & season 2 including:**

- Soccer
- Volleyball
- Basketball
- Flag Football
- Softball
- Team Handball
- Tennis
- Small tournaments and contests



- **All intramural activities are free for students!**





# Group Fitness



**Campus Recreation offers upwards of 25 FREE Group X Classes a week during the academic terms including but not limited to:**

- Spinning®
- Zumba™
- Yogalates
- Kickboxing
- Chiseled
- AbSolution

**\*Personal Training and specialized instructional programs such as Dance Classes and martial Arts are also offered at a discounted rate.**

Always check our current magazine or visit  
[www.newhaven.edu/chargerrec](http://www.newhaven.edu/chargerrec)  
and click on “Fitness” for more information



# FAQ's



Q: What does the Beckerman Center cost?

A: Nothing, the cost during the school year is included in your fees.

Q: How do I sign up to use the Beckerman Center?

A: You don't need to sign up but you do need to be a full time student with an active ID. You'll sign a waiver your first time in the facility and after that you just need your ID.

Q: How do I sign up for RECSports?

A: Registration is done online but there are important deadlines prior to each season. For more information visit the website or ask at the Front Desk.

Q: How can I get a job there?

A: We have Information Sessions that are mandatory to be eligible for employment and those days/times will be posted on our website under "TeamREC". This fall the first Information Session will be in late October/early November.

Q: Is campus recreation the same thing as athletics?

A: No, athletic teams practice and compete in separate facilities. The Beckerman Center was built and is scheduled with the whole student body in mind.

# Questions?

