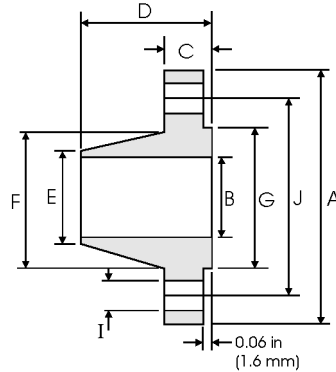




# Weld Neck Flanges - ANSI B16.5



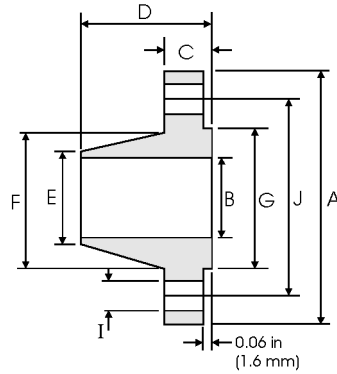
## Class 150 lb

Nominal Pipe Size	Pipe	Flange Data				Hub Data		Raised Face	Drilling Data			Weight
		A	B	C	D	E	F	G	H	I	J	
	Outside Diameter	Overall Diameter	Inside Diameter	Flange Thickness min	Overall Length	Diameter at Weld Bevel	Hub Diameter	Face Diameter	Number of Holes	Bolt Hole Diameter	Diameter of Circle of Holes	kg/ piece
	in mm	in mm	in mm	in mm	in mm	in mm	in mm	in mm		in mm	in mm	
1/2	0.840 21.30	3.500 88.90	0.620 15.70	0.440 11.20	1.880 47.80	0.840 21.30	1.190 30.20	1.380 35.00	4	0.620 15.70	2.380 60.45	0.48
3/4	1.050 26.70	3.880 98.60	0.820 20.80	0.500 12.70	2.060 52.30	1.050 26.70	1.500 38.10	1.690 42.90	4	0.620 15.70	2.750 69.85	0.71
1	1.315 33.40	4.250 108.0	1.050 26.70	0.560 14.20	2.190 55.60	1.320 33.50	1.940 49.30	2.000 50.80	4	0.620 15.70	3.120 79.25	1.01
1 1/4	1.660 42.20	4.620 117.3	1.380 35.10	0.620 15.70	2.250 57.15	1.660 42.20	2.310 58.70	2.500 63.50	4	0.620 15.70	3.500 88.90	1.33
1 1/2	1.900 48.30	5.000 127.0	1.610 40.90	0.690 17.50	2.440 62.00	1.900 48.30	2.560 65.00	2.880 73.15	4	0.620 15.70	3.880 98.60	1.72
2	2.375 60.30	6.000 152.4	2.070 52.60	0.750 19.10	2.500 63.50	2.380 60.45	3.060 77.70	3.620 91.90	4	0.750 19.10	4.750 120.7	2.58
2 1/2	2.875 73.00	7.000 177.8	2.470 62.70	0.880 22.40	2.750 69.85	2.880 73.15	3.560 90.40	4.120 104.6	4	0.750 19.10	5.500 139.7	4.11
3	3.500 88.90	7.500 190.5	3.070 78.00	0.940 23.90	2.750 69.85	3.500 88.90	4.250 108.0	5.000 127.0	4	0.750 19.10	6.000 152.4	4.92
3 1/2	4.000 101.6	8.500 215.9	3.550 90.20	0.940 23.90	2.810 71.40	4.000 101.6	4.810 122.2	5.500 139.7	8	0.750 19.10	7.000 177.8	6.08
4	4.500 114.3	9.000 228.6	4.030 102.4	0.940 23.90	3.000 76.20	4.500 114.3	5.310 134.9	6.190 157.2	8	0.750 19.10	7.500 190.5	6.84
5	5.563 141.3	10.00 254.0	5.050 128.3	0.940 23.90	3.500 88.90	5.560 141.2	6.440 163.6	7.310 185.7	8	0.880 22.40	8.500 215.9	8.56
6	6.625 168.3	11.00 279.4	6.070 154.2	1.000 25.40	3.500 88.90	6.630 168.4	7.560 192.0	8.500 215.9	8	0.880 22.40	9.500 241.3	10.6
8	8.625 219.1	13.50 342.9	7.980 202.7	1.120 28.40	4.000 101.6	8.630 219.2	9.690 246.1	10.62 269.7	8	0.880 22.40	11.75 298.5	17.6
10	10.75 273.0	16.00 406.4	10.02 254.5	1.190 30.20	4.000 101.6	10.75 273.0	12.00 304.8	12.75 323.8	12	1.000 25.40	14.25 362.0	24.0
12	12.75 323.8	19.00 482.6	12.00 304.8	1.250 31.75	4.500 114.3	12.75 323.8	14.38 365.3	15.00 381.0	12	1.000 25.40	17.00 431.8	36.5
14	14.00 355.6	21.00 533.4	To be specified by Purchaser	1.380 35.10	5.000 127.0	14.00 355.6	15.75 400.1	16.25 412.7	12	1.120 28.40	18.75 476.3	48.4
16	16.00 406.4	23.50 596.9		1.440 36.60	5.000 127.0	16.00 406.4	18.00 475.2	18.50 469.9	16	1.120 28.40	21.25 539.8	60.6
18	18.00 457.2	25.00 635.0		1.560 39.60	5.500 139.7	18.00 457.2	19.88 505.0	21.00 533.4	16	1.250 31.75	22.75 577.9	68.3
20	20.00 508.0	27.50 698.5		1.690 42.90	5.690 144.5	20.00 508.0	22.00 558.8	23.00 584.2	20	1.250 31.75	25.00 635.0	84.5
24	24.00 609.6	32.00 812.8		1.880 47.80	6.000 152.4	24.00 609.6	26.12 663.4	27.25 692.1	20	1.380 35.10	29.50 749.3	115



### Notes

- Dimension B corresponds to the pipe inside diameter. Values quoted assume 40S/Standard wall thickness.
- Weights are based on manufacturer's data and are approximate.
- Flat face flanges may be provided at full thickness, C, or with raised face removed (the latter is nonstandard).

# Weld Neck Flanges - ANSI B16.5



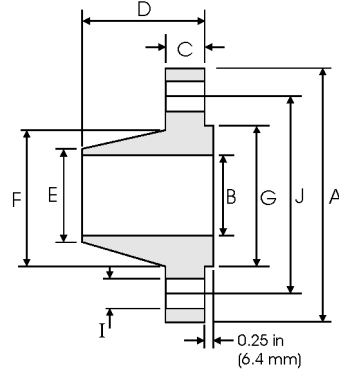
## Class 300 lb

Nominal Pipe Size	Pipe	Flange Data				Hub Data		Raised Face	Drilling Data			Weight
		A	B	C	D	E	F	G	H	I	J	
	Outside Diameter	Overall Diameter	Inside Diameter	Flange Thickness min	Overall Length	Diameter at Weld Bevel	Hub Diameter	Face Diameter	Number of Holes	Bolt Hole Diameter	Diameter of Circle of Holes	kg/ piece
	in mm	in mm	in mm	in mm	in mm	in mm	in mm	in mm		in mm	in mm	
1/2	0.840 21.30	3.750 95.20	0.620 15.70	0.560 14.20	2.060 52.30	0.840 21.30	1.500 38.10	1.380 35.00	4	0.620 15.70	2.620 66.55	0.75
	1.050 26.70	4.620 117.3	0.820 20.80	0.620 15.70	2.250 57.15	1.050 26.70	1.880 47.70	1.690 42.90		0.750 19.00	3.250 82.50	
3/4	1.315 33.40	4.880 123.9	1.050 26.70	0.690 17.50	2.440 62.00	1.320 33.50	2.120 53.80	2.000 50.80	4	0.750 19.00	3.500 88.90	1.52
	1.660 42.20	5.250 133.3	1.380 35.10	0.750 19.00	2.560 65.00	1.660 42.20	2.500 63.50	2.500 63.50		0.750 19.00	3.880 98.50	
1	1.900 48.30	6.120 155.4	1.610 40.90	0.810 20.60	2.690 68.30	1.900 48.30	2.750 69.85	2.880 73.15	4	0.880 22.30	4.500 114.3	2.89
	2.375 60.30	6.500 165.1	2.070 52.60	0.880 22.30	2.750 69.85	2.380 60.45	3.310 84.00	3.620 91.90		0.750 19.00	5.000 127.0	
1 1/4	2.875 73.00	7.500 190.5	2.470 62.70	1.000 25.40	3.000 76.20	2.880 73.15	3.940 100.0	4.120 104.6	8	0.880 22.30	5.880 149.3	5.17
	3.500 88.90	8.250 209.5	3.070 78.00	1.120 28.40	3.120 79.25	3.500 88.90	4.620 117.3	5.000 127.0		0.880 22.30	6.620 168.1	
1 1/2	4.000 101.6	9.000 228.6	3.550 90.20	1.190 30.20	3.190 81.00	4.000 101.6	5.250 133.3	5.500 139.7	8	0.880 22.30	7.250 184.1	8.67
	4.500 114.3	10.00 254.0	4.030 102.4	1.250 31.70	3.380 85.80	4.500 114.3	5.750 146.0	6.190 157.2		0.880 22.30	7.880 200.1	
2	5.563 141.3	11.00 279.4	5.050 128.3	1.380 35.00	3.880 98.50	5.560 141.2	7.000 177.8	7.310 185.7	8	0.880 22.30	9.250 234.9	15.1
	6.625 168.3	12.50 317.5	6.070 154.2	1.440 36.50	3.880 98.50	6.630 168.4	8.120 206.2	8.500 215.9		0.880 22.30	10.62 269.7	
3	8.625 219.1	15.00 381.0	7.980 202.7	1.620 41.10	4.380 111.2	8.630 219.2	10.25 260.3	10.62 269.7	12	1.000 25.40	13.00 330.2	29.9
	10.75 273.0	17.50 444.5	10.02 254.5	1.880 47.70	4.620 117.3	10.75 273.0	12.62 320.5	12.75 323.8		1.120 28.40	15.25 387.3	
4	12.75 323.8	20.50 520.7	12.00 304.8	2.000 50.80	5.120 130.0	12.75 323.8	14.75 374.6	15.00 381.0	16	1.250 31.70	17.75 450.8	61.8
	14.00 355.6	23.00 584.2		2.120 53.80	5.620 142.7	14.00 355.6	16.75 425.4	16.25 412.7		20	1.250 31.70	
6	16.00 406.4	25.50 647.7		2.250 57.15	5.750 146.0	16.00 406.4	19.00 482.6	18.50 469.9	20	1.380 35.00	22.50 571.5	106
	18.00 457.2	28.00 711.2		2.380 60.45	6.250 158.7	18.00 457.2	21.00 533.4	21.00 533.4		24	1.380 35.00	
8	20.00 508.0	30.50 774.7		2.500 63.50	6.380 162.0	20.00 508.0	23.12 587.2	23.00 584.2	24	1.380 35.00	27.00 685.8	158
	24.00 609.6	36.00 914.4		2.750 69.85	6.620 168.1	24.00 609.6	27.62 701.5	27.25 692.1		24	1.620 41.10	



### Notes

- Dimension B corresponds to the pipe inside diameter. Values quoted assume 40S/Standard wall thickness.
- Weights are based on manufacturer's data and are approximate.
- Flat face flanges may be provided at full thickness, C, or with raised face removed (the latter is nonstandard).

# Weld Neck Flanges - ANSI B16.5



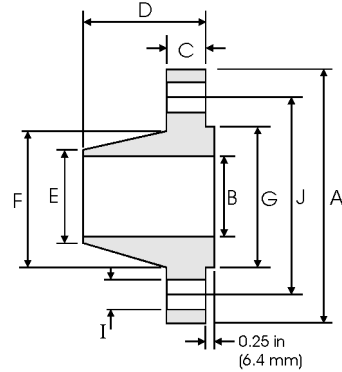
## Class 400 lb

Pipe		Flange Data				Hub Data		Raised Face	Drilling Data			Weight
Nominal Pipe Size		<b>A</b>	<b>B</b>	<b>C</b>	<b>D</b>	<b>E</b>	<b>F</b>	<b>G</b>	<b>H</b>	<b>I</b>	<b>J</b>	
	Outside Diameter	Overall Diameter	Inside Diameter	Flange Thickness min	Overall Length	Diameter at Weld Bevel	Hub Diameter	Face Diameter	Number of Holes	Bolt Hole Diameter	Diameter of Circle of Holes	kg/ piece
	in mm	in mm	in mm	in mm	in mm	in mm	in mm	in mm		in mm	in mm	
1/2	0.840	3.750	To be specified by Purchaser	0.560	2.060	0.840	1.500	1.380	4	0.620	2.620	0.87
	21.30	95.30		14.20	52.30	21.30	38.10	35.00		15.70	66.55	
3/4	1.050	4.620		0.620	2.250	1.050	1.880	1.690	4	0.750	3.250	1.45
	26.70	117.3		15.70	57.15	26.70	47.80	42.90		19.10	82.60	
1	1.315	4.880		0.690	2.440	1.320	2.120	2.000	4	0.750	3.500	1.76
	33.40	124.0		17.50	62.00	33.50	53.80	50.80		19.10	88.90	
1 1/4	1.660	5.250		0.810	2.620	1.660	2.500	2.500	4	0.750	3.880	2.49
	42.20	133.4		20.60	66.55	42.20	63.50	63.50		19.10	98.60	
1 1/2	1.900	6.120		0.880	2.750	1.900	2.750	2.880	4	0.880	4.500	3.49
	48.30	155.4		22.40	69.85	48.30	69.85	73.15		22.40	114.3	
2	2.375	6.500		1.000	2.880	2.380	3.310	3.620	8	0.750	5.000	4.36
	60.30	165.1		25.40	73.15	60.45	84.10	91.90		19.10	127.0	
2 1/2	2.875	7.500		1.120	3.120	2.880	3.940	4.120	8	0.880	5.880	6.43
	73.00	190.5		28.40	79.25	73.15	100.1	104.6		22.40	149.4	
3	3.500	8.250		1.250	3.250	3.500	4.620	5.000	8	0.880	6.620	8.53
	88.90	209.6		31.75	82.60	88.90	117.3	127.0		22.40	168.1	
3 1/2	4.000	9.000		1.380	3.380	4.000	5.250	5.500	8	1.000	7.250	10.7
	101.6	228.6		35.10	85.90	101.6	133.4	139.7		25.40	184.2	
4	4.500	10.00		1.380	3.500	4.500	5.750	6.190	8	1.000	7.880	12.8
	114.3	254.0		35.10	88.90	114.3	146.1	157.2		25.40	200.2	
5	5.563	11.00	1.500	4.000	5.560	7.000	7.310	8	1.000	9.250	16.9	
	141.3	279.4	38.10	101.6	141.2	177.8	185.7		25.40	235.0		
6	6.625	12.50	1.620	4.060	6.630	8.120	8.500	12	1.000	10.62	22.0	
	168.3	317.5	41.10	103.1	168.4	206.2	215.9		25.40	269.7		
8	8.625	15.00	1.880	4.620	8.630	10.25	10.62	12	1.120	13.00	34.7	
	219.1	381.0	47.80	117.3	219.2	260.4	269.7		28.40	330.2		
10	10.75	17.50	2.120	4.880	10.75	12.62	12.75	16	1.250	15.25	48.5	
	273.0	444.5	53.80	124.0	273.0	320.5	323.8		31.75	387.4		
12	12.75	20.50	2.250	5.380	12.75	14.75	15.00	16	1.380	17.75	69.6	
	323.8	520.7	57.15	136.7	323.8	374.7	381.0		35.10	450.9		
14	14.00	23.00	2.380	5.880	14.00	16.75	16.25	20	1.380	20.25	95.5	
	355.6	584.2	60.45	149.4	355.6	425.5	412.7		35.10	514.4		
16	16.00	25.50	2.500	6.000	16.00	19.00	18.50	20	1.500	22.50	118	
	406.4	647.7	63.50	152.4	406.4	482.6	469.9		38.10	571.5		
18	18.00	28.00	2.620	6.500	18.00	21.00	21.00	24	1.500	24.75	145	
	457.2	711.2	66.55	165.1	457.2	533.4	533.4		38.10	628.7		
20	20.00	30.50	2.750	6.620	20.00	23.12	23.00	24	1.620	27.00	173	
	508.0	774.7	69.85	168.1	508.0	587.2	584.2		41.10	685.8		
24	24.00	36.00	3.000	6.880	24.00	27.62	27.25	24	1.880	32.00	249	
	609.6	914.4	76.20	174.8	609.6	701.5	692.1		47.80	812.8		

### Notes

- Dimension B corresponds to the pipe inside diameter. Values quoted assume 40S/Standard wall thickness.
- Weights are based on manufacturer's data and are approximate.

# Weld Neck Flanges - ANSI B16.5



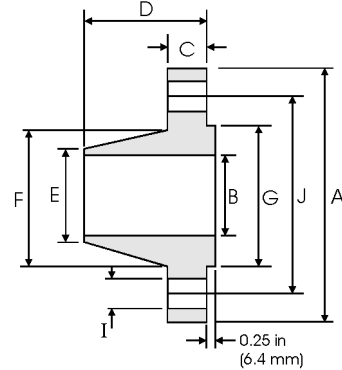
## Class 600 lb

Nominal Pipe Size	Pipe		Flange Data				Hub Data		Raised Face	Drilling Data			Weight
	Outside Diameter	Overall Diameter	Inside Diameter	Flange Thickness min	Overall Length	Diameter at Weld Bevel	Hub Diameter	Face Diameter	G	H	I	J	kg/ piece
1/2	0.840 21.30	3.750 95.30	To be specified by Purchaser	0.560 14.20	2.060 52.30	0.840 21.30	1.500 38.10	1.380 35.00	4	0.620 15.70	2.620 66.55	0.87	
3/4	1.050 26.70	4.620 117.3		0.620 15.70	2.250 57.15	1.050 26.70	1.880 47.80	1.690 42.90	4	0.750 19.10	3.250 82.60	1.45	
1	1.315 33.40	4.880 124.0		0.690 17.50	2.440 62.00	1.320 33.50	2.120 53.80	2.000 50.80	4	0.750 19.10	3.500 88.90	1.76	
1 1/4	1.660 42.20	5.250 133.4		0.810 20.60	2.620 66.55	1.660 42.20	2.500 63.50	2.500 63.50	4	0.750 19.10	3.880 98.60	2.49	
1 1/2	1.900 48.30	6.120 155.4		0.880 22.40	2.750 69.85	1.900 48.30	2.750 69.85	2.880 73.15	4	0.880 22.40	4.500 114.3	3.49	
2	2.375 60.30	6.500 165.1		1.000 25.40	2.880 73.15	2.380 60.45	3.310 84.10	3.620 91.90	8	0.750 19.10	5.000 127.0	4.36	
2 1/2	2.875 73.00	7.500 190.5		1.120 28.40	3.120 79.25	2.880 73.15	3.940 100.1	4.120 104.6	8	0.880 22.40	5.880 149.4	6.43	
3	3.500 88.90	8.250 209.6		1.250 31.75	3.250 82.60	3.500 88.90	4.620 117.3	5.000 127.0	8	0.880 22.40	6.620 168.1	8.53	
3 1/2	4.000 101.6	9.000 228.6		1.380 35.10	3.380 85.90	4.000 101.6	5.250 133.4	5.500 139.7	8	1.000 25.40	7.250 184.2	10.7	
4	4.500 114.3	10.75 273.1		1.500 38.10	4.000 101.6	4.500 114.3	6.000 152.4	6.190 157.2	8	1.000 25.40	8.500 215.9	17.4	
5	5.563 141.3	13.00 330.2		1.750 44.50	4.500 114.3	5.560 141.2	7.440 189.0	7.310 185.7	8	1.120 28.40	10.50 266.7	29.2	
6	6.625 168.3	14.00 355.6		1.880 47.80	4.620 117.3	6.630 168.4	8.750 222.3	8.500 215.9	12	1.120 28.40	11.50 292.1	34.9	
8	8.625 219.1	16.50 419.1		2.190 55.60	5.250 133.4	8.630 219.2	10.75 273.1	10.62 269.7	12	1.250 31.75	13.75 349.3	53.9	
10	10.75 273.0	20.00 508.0		2.500 63.50	6.000 152.4	10.75 273.0	13.50 342.9	12.75 323.8	16	1.380 35.10	17.00 431.8	86.5	
12	12.75 323.8	22.00 558.8		2.620 66.55	6.120 155.4	12.75 323.8	15.75 400.1	15.00 381.0	20	1.380 35.10	19.25 489.0	103	
14	14.00 355.6	23.75 603.3		2.750 69.85	6.500 165.1	14.00 355.6	17.00 431.8	16.25 412.7	20	1.500 38.10	20.75 527.1	122	
16	16.00 406.4	27.00 685.8		3.000 76.20	7.000 177.8	16.00 406.4	19.50 495.3	18.50 469.9	20	1.620 41.10	23.75 603.3	170	
18	18.00 457.2	29.25 743.0		3.250 82.60	7.250 184.2	18.00 457.2	21.50 546.1	21.00 533.4	20	1.750 44.50	25.75 654.1	204	
20	20.00 508.0	32.00 812.0		3.500 88.90	7.500 190.5	20.00 508.0	24.00 609.6	23.00 584.2	24	1.750 44.50	28.50 723.9	254	
24	24.00 609.6	37.00 939.8		4.000 101.6	8.000 203.2	24.00 609.6	28.25 717.6	27.25 692.1	24	2.000 50.80	33.00 838.2	358	

### Notes

- Dimension B corresponds to the pipe inside diameter. Values quoted assume 40S/Standard wall thickness.
- Weights are based on manufacturer's data and are approximate.

# Weld Neck Flanges - ANSI B16.5



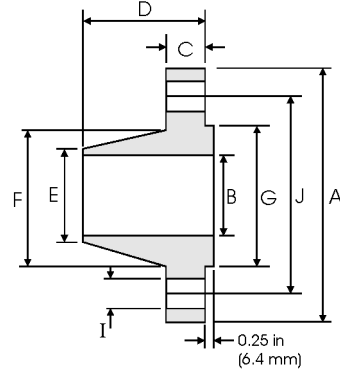
## Class 900 lb

Pipe	Flange Data					Hub Data		Raised Face	Drilling Data			Weight
Nominal Pipe Size	A	B	C	D	E	F	G	H	I	J	kg/ piece	
	Outside Diameter	Overall Diameter	Inside Diameter	Flange Thickness min	Overall Length	Diameter at Weld Bevel	Hub Diameter	Face Diameter	Number of Holes	Bolt Hole Diameter		Diameter of Circle of Holes
	in mm	in mm	in mm	in mm	in mm	in mm	in mm	in mm		in mm		in mm
1/2	0.840 21.30	4.750 120.6	To be specified by Purchaser	0.880 22.30	2.380 60.45	0.840 21.30	1.500 38.10	1.380 35.00	4	0.880 22.30	3.250 82.50	1.87
3/4	1.050 26.70	5.120 130.0		1.000 25.40	2.750 69.85	1.050 26.70	1.750 44.00	1.690 42.90	4	0.880 22.30	3.500 88.90	2.56
1	1.315 33.40	5.880 149.3		1.120 28.40	2.880 73.15	1.320 33.50	2.060 52.30	2.000 50.80	4	1.000 25.40	4.000 101.6	3.74
1 1/4	1.660 42.20	6.250 158.7		1.120 28.40	2.880 73.15	1.660 42.20	2.500 63.50	2.500 63.50	4	1.000 25.40	4.380 111.2	4.33
1 1/2	1.900 48.30	7.000 177.8		1.250 31.70	3.250 82.50	1.900 48.30	2.750 69.85	2.880 73.15	4	1.120 28.40	4.880 123.9	5.94
2	2.375 60.30	8.500 215.9		1.500 38.10	4.000 101.6	2.380 60.45	4.120 104.6	3.620 91.90	8	1.000 25.40	6.500 165.1	10.8
2 1/2	2.875 73.00	9.620 244.3		1.620 41.10	4.120 104.6	2.880 73.15	4.880 123.9	4.120 104.6	8	1.120 28.40	7.500 190.5	15.0
3	3.500 88.90	9.500 241.3		1.500 38.10	4.000 101.6	3.500 88.90	5.000 127.0	5.000 127.0	8	1.000 25.40	7.500 190.5	13.7
4	4.500 114.3	11.50 292.1		1.750 44.40	4.500 114.3	4.500 114.3	6.250 158.7	6.190 157.2	8	1.250 31.70	9.250 234.9	22.5
5	5.563 141.3	13.75 349.2		2.000 50.80	5.000 127.0	5.560 141.2	7.500 190.5	7.310 185.7	8	1.380 35.00	11.00 279.4	37.4
6	6.625 168.3	15.00 381.0		2.190 55.60	5.500 139.7	6.630 168.4	9.250 234.9	8.500 215.9	12	1.250 31.70	12.50 317.5	47.7
8	8.625 219.1	18.50 469.9		2.500 63.50	6.380 162.0	8.630 219.2	11.75 298.4	10.62 269.7	12	1.500 38.10	15.50 393.7	81.3
10	10.75 273.0	21.50 546.1		2.750 69.85	7.250 184.1	10.75 273.0	14.50 368.3	12.75 323.8	16	1.500 38.10	18.50 469.9	119
12	12.75 323.8	24.00 609.6		3.120 79.25	7.880 200.1	12.75 323.8	16.50 419.1	15.00 381.0	20	1.500 38.10	21.00 533.4	157
14	14.00 355.6	25.25 641.3		3.380 85.80	8.380 212.8	14.00 355.6	17.75 450.8	16.25 412.7	20	1.620 41.10	22.00 558.8	180
16	16.00 406.4	27.75 704.8		3.500 88.90	8.500 215.9	16.00 406.4	20.00 508.0	18.50 469.9	20	1.750 44.40	24.25 615.9	217
18	18.00 457.2	31.00 787.4		4.000 101.6	9.000 228.6	18.00 457.2	22.25 565.1	21.00 533.4	20	2.000 50.80	27.00 685.8	292
20	20.00 508.0	33.75 857.2		4.250 107.9	9.750 247.6	20.00 508.0	24.50 622.3	23.00 584.2	20	2.120 53.80	29.50 749.3	362
24	24.00 609.6	41.00 1041.4		5.500 139.7	11.50 292.1	24.00 609.6	29.50 749.3	27.25 692.1	20	2.620 66.55	35.50 901.7	665

### Notes

- Dimension B corresponds to the pipe inside diameter. Values quoted assume 40S/Standard wall thickness.
- Weights are based on manufacturer's data and are approximate.

## Weld Neck Flanges - ANSI B16.5

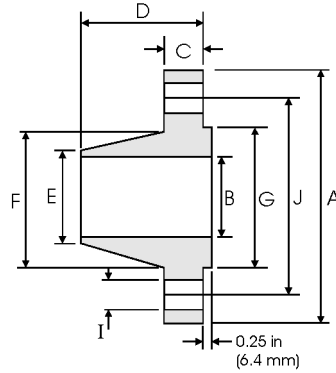


### Class 1500 lb



Pipe	Flange Data					Hub Data		Raised Face	Drilling Data			Weight
Nominal Pipe Size	A	B	C	D	E	F	G	H	I	J	kg/ piece	
	Outside Diameter	Overall Diameter	Inside Diameter	Flange Thickness min	Overall Length	Diameter at Weld Bevel	Hub Diameter	Face Diameter	Number of Holes	Bolt Hole Diameter		Diameter of Circle of Holes
	in mm	in mm	in mm	in mm	in mm	in mm	in mm	in mm		in mm	in mm	
1/2	0.840 21.30	4.750 120.6		0.880 22.30	2.380 60.45	0.840 21.30	1.500 38.10	1.380 35.00	4	0.880 22.30	3.250 82.50	1.87
3/4	1.050 26.70	5.120 130.0		1.000 25.40	2.750 69.85	1.050 26.70	1.750 44.00	1.690 42.90	4	0.880 22.30	3.500 88.90	2.56
1	1.315 33.40	5.880 149.3		1.120 28.40	2.880 73.15	1.320 33.50	2.060 52.30	2.000 50.80	4	1.000 25.40	4.000 101.6	3.74
1 1/4	1.660 42.20	6.250 158.7		1.120 28.40	2.880 73.15	1.660 42.20	2.500 63.50	2.500 63.50	4	1.000 25.40	4.380 111.2	4.33
1 1/2	1.900 48.30	7.000 177.8		1.250 31.70	3.250 82.50	1.900 48.30	2.750 69.85	2.880 73.15	4	1.120 28.40	4.880 123.9	5.94
2	2.375 60.30	8.500 215.9		1.500 38.10	4.000 101.6	2.380 60.45	4.120 104.6	3.620 91.90	8	1.000 25.40	6.500 165.1	10.8
2 1/2	2.875 73.00	9.620 244.3		1.620 41.10	4.120 104.6	2.880 73.15	4.880 123.9	4.120 104.6	8	1.120 28.40	7.500 190.5	15.0
3	3.500 88.90	10.50 266.7	To be specified by Purchaser	1.880 47.70	4.620 117.3	3.500 88.90	5.250 133.3	5.000 127.0	8	1.250 31.70	8.000 203.2	19.9
4	4.500 114.3	12.25 311.1		2.120 53.80	4.880 123.9	4.500 114.3	6.380 162.0	6.190 157.2	8	1.380 35.00	9.500 241.3	29.9
5	5.563 141.3	14.75 374.6		2.880 73.15	6.120 155.4	5.560 141.2	7.750 196.8	7.310 185.7	8	1.620 41.10	11.50 292.1	55.4
6	6.625 168.3	15.50 393.7		3.250 82.50	6.750 171.4	6.630 168.4	9.000 228.6	8.500 215.9	12	1.500 38.10	12.50 317.5	68.4
8	8.625 219.1	19.00 482.6		3.620 91.90	8.380 212.8	8.630 219.2	11.50 292.1	10.62 269.7	12	1.750 44.40	15.50 393.7	117
10	10.75 273.0	23.00 584.2		4.250 107.9	10.00 254.0	10.75 273.0	14.50 368.3	12.75 323.8	12	2.000 50.80	19.00 482.6	194
12	12.75 323.8	26.50 673.1		4.880 123.9	11.12 282.4	12.75 323.8	17.75 450.8	15.00 381.0	16	2.120 53.80	22.50 571.5	288
14	14.00 355.6	29.50 749.3		5.250 133.3	11.75 298.4	14.00 355.6	19.50 495.3	16.25 412.7	16	2.380 60.45	25.00 635.0	380
16	16.00 406.4	32.50 825.5		5.750 146.0	12.25 311.1	16.00 406.4	21.75 552.4	18.50 469.9	16	2.620 66.55	27.75 704.8	485
18	18.00 457.2	36.00 914.4		6.380 162.0	12.88 327.1	18.00 457.2	23.50 596.9	21.00 533.4	16	2.880 73.15	30.50 774.7	644
20	20.00 508.0	38.75 984.2		7.000 177.8	14.00 355.6	20.00 508.0	25.25 641.3	23.00 584.2	16	3.120 79.25	32.75 831.8	775
24	24.00 609.6	46.00 1168.4		8.000 203.2	16.00 406.4	24.00 609.6	30.00 762.0	27.25 692.1	16	3.620 91.90	39.00 990.6	1232

#### Notes

- Dimension B corresponds to the pipe inside diameter. Values quoted assume 40S/Standard wall thickness.
- Weights are based on manufacturer's data and are approximate.



### Class 2500 lb

Pipe		Flange Data				Hub Data		Raised Face	Drilling Data			Weight
Nominal Pipe Size		<b>A</b>	<b>B</b>	<b>C</b>	<b>D</b>	<b>E</b>	<b>F</b>	<b>G</b>	<b>H</b>	<b>I</b>	<b>J</b>	
	Outside Diameter	Overall Diameter	Inside Diameter	Flange Thickness min	Overall Length	Diameter at Weld Bevel	Hub Diameter	Face Diameter	Number of Holes	Bolt Hole Diameter	Diameter of Circle of Holes	kg/ piece
	in mm	in mm	in mm	in mm	in mm	in mm	in mm	in mm		in mm	in mm	
1/2	0.840	5.250	To be specified by Purchaser	1.190	2.880	0.840	1.690	1.380	4	0.880	3.500	3.12
	21.30	133.4		30.20	73.15	21.30	42.90	35.00		22.40	88.90	
3/4	1.050	5.500		1.250	3.120	1.050	2.000	1.690	4	0.880	3.750	3.70
	26.70	139.7		31.75	79.25	26.70	50.80	42.90		22.40	95.30	
1	1.315	6.250		1.380	3.500	1.320	2.250	2.000	4	1.000	4.250	5.24
	33.40	158.8		35.10	88.90	33.50	57.15	50.80		25.40	108.0	
1 1/4	1.660	7.250		1.500	3.750	1.660	2.880	2.500	4	1.120	5.120	7.74
	42.20	184.2		38.10	95.30	42.20	73.15	63.50		28.40	130.0	
1 1/2	1.900	8.000		1.750	4.380	1.900	3.120	2.880	4	1.250	5.750	10.9
	48.30	203.2		44.50	111.3	48.30	79.25	73.15		31.75	146.1	
2	2.375	9.250		2.000	5.000	2.380	3.750	3.620	8	1.120	6.750	16.2
	60.30	235.0		50.80	127.0	60.45	95.30	91.90		28.40	171.5	
2 1/2	2.875	10.50	2.250	5.620	2.880	4.500	4.120	8	1.250	7.750	23.7	
	73.00	266.7	57.15	142.7	73.15	114.3	104.6		31.75	196.9		
3	3.500	12.00	2.620	6.620	3.500	5.250	5.000	8	1.380	9.000	36.2	
	88.90	304.8	66.55	168.1	88.90	133.4	127.0		35.10	228.6		
4	4.500	14.00	3.000	7.500	4.500	6.500	6.190	8	1.620	10.75	55.3	
	114.3	355.6	76.20	190.5	114.3	165.1	157.2		41.10	273.1		
5	5.563	16.50	3.620	9.000	5.560	8.000	7.310	8	1.880	12.75	92.5	
	141.3	419.1	91.90	228.6	141.2	203.2	185.7		47.80	323.9		
6	6.625	19.00	4.250	10.75	6.630	9.250	8.500	8	2.120	14.50	143	
	168.3	482.6	108.0	273.1	168.4	235.0	215.9		53.80	368.3		
8	8.625	21.75	5.000	12.50	8.630	12.00	10.62	12	2.120	17.25	215	
	219.1	552.5	127.0	317.5	219.2	304.8	269.7		53.80	438.2		
10	10.75	26.50	6.500	16.50	10.75	14.75	12.75	12	2.620	21.25	406	
	273.0	673.1	165.1	419.1	273.0	374.7	323.8		66.55	539.8		
12	12.75	30.00	7.250	18.25	12.75	17.38	15.00	12	2.880	24.38	572	
	323.8	762.0	184.2	463.6	323.8	441.5	381.0		73.15	619.3		

Notes

- Dimension B corresponds to the pipe inside diameter. Values quoted assume 40S/Standard wall thickness.
- Weights are based on manufacturer's data and are approximate.