

# **WestProPlus: A Stochastic Spreadsheet Program for the Management of All-Aged Douglas-fir/Western Hemlock Forests in the Pacific Northwest**

Jingjing Liang, Joseph Buongiorno, and Robert A. Monserud

## **Authors**

**Jingjing Liang** is a Research Associate and **Joseph Buongiorno** is the Class of 1933 Bascom Professor and John N. McGovern WARF Professor, Department of Forest Ecology and Management, University of Wisconsin-Madison, 1630 Linden Drive, Madison, WI 53706; **Robert A. Monserud** is a research forester, U.S. Department of Agriculture, Forest Service, Pacific Northwest Research Station, 620 SW Main St., Suite 400, Portland, OR 97205.

## **Abstract**

**Liang, Jingjing; Buongiorno, Joseph; Monserud, Robert A. 2006.** WestProPlus: a spreadsheet program for the management of all-aged Douglas-fir/western hemlock forests in the Pacific Northwest.

WestProPlus is an add-in program developed to work with Microsoft Excel® to simulate the growth and management of all-aged Douglas-fir/western hemlock stands in Oregon and Washington. Its built-in growth model was calibrated from 2,706 permanent plots in the Douglas-fir/western hemlock forest type in Oregon and Washington. Stands are described by the number of trees per acre in each of 19 2-inch diameter classes in four species groups: Douglas-fir, other shade-intolerant species, western hemlock, and other shade-tolerant species.

WestProPlus allows managers to predict stand development by year and for many decades from a specific initial state. The simulations are stochastic, based on bootstrapping of the disturbances observed on the permanent plots between inventories. Users can choose cutting regimes by specifying the interval between harvests (cutting cycle) and a target distribution of trees remaining after harvest. A target distribution can be a reverse-J-shaped distribution or any other desired distribution. Diameter-limit cuts can also be simulated. Tabulated and graphic results show diameter distributions, basal area, volumes by log grade, income, net present value, and indices of stand diversity by species and size.

This manual documents the program installation and activation, provides suggestions for working with Excel®, and gives background information on WestProPlus's models. It offers a comprehensive tutorial in the form of two practical examples that explain how to start the program, enter simulation data, execute a simulation, compare simulations, and plot summary statistics.

**Keywords:** WestProPlus, simulation, growth model, Douglas-fir, western hemlock, management, economics, ecology, diversity, wood quality, risk.



## Contents

<b>1. Introduction.....</b>	<b>1</b>
What Is WestProPlus? .....	1
Why Simulate This Type of Stand?.....	2
How Does WestProPlus Work?.....	3
What Is in This Manual? .....	3
<b>2. Getting Started.....</b>	<b>4</b>
System Requirements.....	4
Loading WestProPlus.....	4
Unloading WestProPlus.....	6
<b>3. Using WestProPlus.....</b>	<b>6</b>
WestProPlus Input.....	6
BDq Calculator .....	8
Storing Data and Retrieving Stored Data .....	9
Running Simulations.....	9
<b>4. Example: Simulating BDq Management Regimes.....</b>	<b>10</b>
Simulation Parameters.....	11
Running Simulations .....	13
Simulation Output .....	14
Comparison of BDq Selection Regimes .....	26
<b>Troubleshooting WestProPlus.....</b>	<b>29</b>
<b>Acknowledgments.....</b>	<b>30</b>
<b>Metric Equivalents.....</b>	<b>31</b>
<b>Literature Cited.....</b>	<b>32</b>
<b>Appendix 1—WestProPlus Plot Data.....</b>	<b>36</b>
<b>Appendix 2—Growth-and-Yield Model.....</b>	<b>42</b>
<b>Appendix 3—Log Grade Equations.....</b>	<b>45</b>
<b>Appendix 4—Stochastic Stumpage Price and Interest Rate Models.....</b>	<b>48</b>
1) Assumes 0.012 ft <sup>3</sup> /Mbf. ....	49
<b>Appendix 5—Definition of Diversity of Tree Species and Size.....</b>	<b>50</b>
<b>Glossary.....</b>	<b>51</b>



## 1. Introduction

The WestProPlus User's Manual is intended to help forest managers predict the effects of management, or lack thereof, on stand growth, productivity, income, wood quality, diversity of species, and diversity of tree size. The WestProPlus User's Manual documents background, instruction, and additional suggestions for using the WestProPlus program. The next section explains how to install WestProPlus on your computer and provides a description of the input data, as well as instructions for loading and saving these data, running simulations, and saving the results. Examples of applications in simulating management regimes are given. If you are new to WestProPlus, it will be useful to run these examples while reading the manual. We included answers to some common questions. Appendices cover the growth equations, volume equations, and log grade equations of WestProPlus, and the data used to calibrate these equations.

The WestProPlus software and all the sample spreadsheets can be downloaded online from <http://www.forest.wisc.edu/facstaff/buongiorno/>.

### What Is WestProPlus?

WestProPlus is a computer program to predict the development of all-aged Douglas-fir/western hemlock forests in the Pacific Northwest. With this program, various management regimes can be considered, and their outcomes can be quickly predicted. WestProPlus is a successor of WestPro (Ralston et al. 2003). WestProPlus has the following features compared to WestPro:

- 1) Extensions of the database from 66 uneven-aged plots to 2,706 all-aged plots, covering most of the Douglas-fir/western hemlock type in Oregon and Washington (App. 1).
- 2) Expansion of species groups from two (softwoods, hardwoods) to four (Douglas-fir, other shade-intolerant, western hemlock, other shade-tolerant).

- 3) Calibration of an improved growth model, with particular attention to the effect of stand diversity on growth, mortality, and recruitment (Liang et al. 2005a).
- 4) Introduction of log grade equations to predict the effects of management on wood quality.
- 5) Recognition of risk and uncertainty in stand growth, timber prices, and interest rates.

Three other deterministic relatives of WestProPlus (CalPro, NorthPro, and SouthPro) already exist for California mixed conifer forests (Liang et al. 2004a), northern hardwoods in Wisconsin and Michigan (Liang et al. 2004b), and for loblolly pine in the Southern United States (Schulte et al. 1998), respectively. We have used our experience with these programs to further simplify the data input and the program output to increase WestProPlus' usefulness for practitioners.

### **Why Simulate This Type of Stand?**

Douglas-fir/western hemlock (*Pseudotsuga menziesii*/*Tsuga heterophylla*) forests in the Pacific Northwest are very productive. They were harvested heavily during the late 1800s and early 1900s, at an unsustainable rate (Curtis and Carey 1996). Consequently, although they vary highly in composition and structure Douglas-fir/western hemlock forests are mostly in early seral stages (Barbour and Billings 1988).

Douglas-fir wood is valued for its superior mechanical properties, making it most useful in building and construction (Barbour and Kellogg 1990). Western hemlock is another important commercial species. It is shade tolerant yet fast growing, deer and elk browse it, and hemlock trees are a part of the esthetics of western forests (Burns and Honkala 1990).

Even-aged silviculture is prevalent in managed Douglas-fir forests. There has been little tendency to adopt uneven-aged (selection) management (Emmingham 1998) despite its attractive features (Hansen et al. 1991; Guldin 1996). This seems to be due to a lack of experience with uneven-aged management, and scarcity of data regarding its effects compared to even-aged systems.



WestProPlus helps predict the development of Douglas-fir-western hemlock stands with various types of silviculture. Some of the examples in this manual suggest that effective uneven-aged management of Douglas-fir/western hemlock forests can be profitable while maintaining stands with high diversity of tree species and size.

## **How Does WestProPlus Work?**

WestProPlus predictions are based on a stochastic version of a multispecies, site- and density-dependent matrix growth model (Liang et al. 2005a, App. 2), coupled with log grade model (App. 3), stochastic stumpage price and interest rate models (App. 4). To run WestProPlus, you specify an initial stand state, define a management policy by target stand state, and cutting cycle. The program predicts economic and ecological effects of the policy, with a sequence of random numbers to simulate stochastic shocks in stand growth, timber prices, and interest rates.

As you change policy, WestProPlus repeats the same sequence of random numbers to simulate stochastic stand growth, timber prices, and interest rates. Using the same string of random numbers facilitates comparison of management policies. A new string of random numbers may also be generated by quitting WestProPlus and loading it again (see section 2).

## **What Is in This Manual?**

The next section explains how to install WestProPlus on your computer and provides a description of the input data, as well as instructions for loading and saving these data, running simulations, and saving the results. Examples of applications in simulating uneven-aged management regimes are given. We included answers to some common questions. Appendices cover the equations involved in WestProPlus, and the data used to calibrate these equations. The manual assumes that you are familiar with the basics of Microsoft Excel®. All the spreadsheets shown in this manual are screenshots from the Excel® 2003.

## 2. Getting Started

### System Requirements

You need the following hardware and software to operate WestProPlus:

A computer (PC) with at least 128 megabytes of random access memory (RAM)

Microsoft® Windows® 98, 2000, Me, XP, or Windows NT™ 4<sup>1</sup>

Microsoft® Excel® 97 or above

A free copy of the WestProPlus software downloaded from

<http://www.forest.wisc.edu/facstaff/buongiorno/>, or from the authors through  
jbuongio@wisc.edu.

### Loading WestProPlus

To install the program for the first time:

1. Insert the diskette containing **WestProPlus.xla** into your computer, or download it from the Web site to your local disk and go to step 3.
2. Select the **WestProPlus.xla** icon and copy it onto your hard disk. For your convenience, you may save it in a new folder named **WestProPlus**, e.g., C:\WestProPlus\WestProPlus.xla.
3. Open Microsoft® Excel® and **START A NEW WORKBOOK**.
4. Under the **Tools** menu, select **Add-ins**. In the add-ins dialogue box, select **Browse** and choose **WestProPlus.xla** from its location on your hard disk. Click **OK**.
5. Return to the **Tools** menu. WestProPlus is now the last item in the menu. Select **WestProPlus** and click **OK** in the title box.

---

<sup>1</sup> The use of trade or firm names in this publication is for reader information and does not imply endorsement by the U.S. Department of Agriculture of any product or service.

6. The **WestProPlus** menu should now be in the Excel® menu bar.

Until you uninstall it, **WestProPlus** will be a permanent option in the **Tools** menu of Excel®. You can load the program by selecting **WestProPlus** in the **Tools** menu. This will add **WestProPlus** to the Excel® menu, and the input data worksheet (fig. 1) will appear.

Microsoft Excel - Book1

WESTPRO+ File Edit View Insert Format Tools Data Window Help

Type a question for help

105% Arial 10

A1

1

2

3

4

5

6

7

8

9

10

11

12

13

14

15

16

17

18

19

20

21

22

23

24

25

26

27

28

29

30

31

32

33

34

35

36

37

38

39

40

41

42

43

44

45

46

47

48

49

50

51

52

53

54

55

56

57

58

59

60

61

62

63

64

65

66

67

68

69

70

71

72

73

74

75

76

77

78

79

80

81

82

83

84

85

86

87

88

89

90

91

92

93

94

95

96

97

98

99

100

101

102

103

104

105

106

107

108

109

110

111

112

113

114

115

116

117

118

119

120

121

122

123

124

125

126

127

128

129

130

131

132

133

134

135

136

137

138

139

140

141

142

143

144

145

146

147

148

149

150

151

152

153

154

155

156

157

158

159

160

161

162

163

164

165

166

167

168

169

170

171

172

173

174

175

176

177

178

179

180

181

182

183

184

185

186

187

188

189

190

191

192

193

194

195

196

197

198

199

200

201

202

203

204

205

206

207

208

209

210

211

212

213

214

215

216

217

218

219

220

221

222

223

224

225

226

227

228

229

230

231

232

233

234

235

236

237

238

239

240

241

242

243

244

245

246

247

248

249

250

251

252

253

254

255

256

257

258

259

260

261

262

263

264

265

266

267

268

269

270

271

272

273

274

275

276

277

278

279

280

281

282

283

284

285

286

287

288

289

290

291

292

293

294

295

296

297

298

299

300

301

302

303

304

305

306

307

308

309

310

311

312

313

314

315

316

317

318

319

320

321

322

323

324

325

326

327

328

329

330

331

332

333

334

335

336

337

338

339

340

341

342

343

344

345

346

347

348

349

350

351

352

353

354

355

356

357

358

359

360

361

362

363

364

365

366

367

368

369

370

371

372

373

374

375

376

377

378

379

380

381

382

383

384

385

386

387

388

389

390

391

392

393

394

395

396

397

398

399

400

401

402

403

404

405

406

407

408

409

410

411

412

413

414

415

416

417

418

419

420

421

422

423

424

425

426

427

428

429

430

431

432

433

434

435

436

437

438

439

440

441

442

443

444

445

446

447

448

449

450

451

452

453

454

455

456

457

458

459

460

461

462

463

464

465

466

467

468

469

470

471

472

473

474

475

476

477

478

479

480

481

482

483

484

485

486

487

488

489

490

491

492

493

494

495

496

497

498

499

500

501

502

503

504

505

506

507

508

509

510

511

512

513

514

515

516

517

518

519

520

521

522

523

524

525

526

527

528

529

530

531

532

533

534

535

536

537

538

539

540

541

542

543

544

545

546

547

548

549

550

551

552

553

554

555

556

557

558

559

560

561

562

563

564

565

566

567

568

569

570

571

572

573

574

575

576

577

578

579

580

581

582

583

584

585

586

587

588

589

590

591

592

593

594

595

596

597

598

599

600

601

602

603

604

605

606

607

608

609

610

611

612

613

614

615

616

617

618

619

620

621

622

623

624

625

626

627

628

629

630

631

632

633

634

635

636

637

638

639

640

641

642

643

644

645

646

647

648

649

650

651

652

653

654

655

656

657

658

659

660

661

662

663

664

665

666

667

668

669

670

671

672

673

674

675

676

677

678

679

680

681

682

683

684

685

686

687

688

689

690

691

692

693

694

695

696

697

698

699

700

701

702

703

704

705

706

707

708

709

710

711

712

713

714

715

716

717

718

719

720

721

722

723

724

725

726

727

728

729

730

731

732

733

734

735

736

737

738

739

740

741

742

743

744

745

746

747

748

749

750

751

752

753

754

755

756

757

758

759

760

761

762

763

764

765

766

767

768

769

770

771

772

773

774

775

776

777

778

779

780

781

782

783

784

785

786

787

788

789

790

791

792

793

794

795

796

797

798

799

800

801

802

803

804

805

806

807

808

809

810

811

812

813

814

815

816

817

818

819

820

821

822

823

824

825

826

827

828

829

830

831

832

833

834

835

836

837

838

839

840

841

842

843

844

845

846

847

848

849

850

851

852

853

854

855

856

857

858

859

860

861

862

863

864

865

866

867

868

869

870

871

872

873

874

875

876

877

878

879

880

881

882

883

884

885

886

887

888

889

890

891

892

893

894

895

896

897

898

899

900

901

902

903

904

905

906

907

908

909

910

911

912

913

914

915

916

917

918

919

920

921

922

923

924

925

926

927

928

929

930

931

932

933

934

935

936

937

938

939

940

941

942

943

944

945

946

947

948

949

950

951

952

953

954

955

956

957

958

959

960

961

962

963

964

965

966

967

968

969

970

971

972

973

974

975

976

977

978

979

980

981

982

983

984

985

986

987

988

989

990

991

992

993

994

995

996

997

998

999

1000

1001

1002

1003

1004

1005

1006

1007

1008

1009

1010

1011

1012

1013

1014

1015

1016

1017

1018

1019

1020

1021

1022

1023

1024

1025

1026

1027

1028

1029

1030

1031

1032

1033

1034

1035

1036

1037

1038

1039

1040

1041

1042

1043

1044

1045

1046

1047

1048

1049

1050

1051

1052

1053

1054

1055

1056

1057

1058

1059

1060

1061

1062

1063

1064

1065

1066

1067

1068

1069

1070

1071

1072

1073

1074

1075

1076

1077

1078

1079

1080

1081

1082

1083

1084

1085

1086

1087

1088

1089

1090

1091

1092

1093

1094

1095

1096

1097

1098

1099

1100

1101

1102

1103

1104

1105

1106

1107

1108

1109

1110

1111

1112

1113

1114

1115

1116

1117

1118

1119

1120

1121

1122

1123

1124

1125

1126

1127

1128

1129

1130

1131

1132

1133

1134

1135

1136

1137

1138

1139

1140

1141

1142

1143

1144

1145

1146

1147

1148

1149

1150

1151

1152

1153

1154

1155

1156

1157

1158

1159

1160

1161

1162

1163

1164

1165

1166

1167

1168

1169

1170

1171

1172

1173

1174

1175

1176

1177

1178

1179

1180

1181

1182

1183

1184

1185

1186

1187

1188

1189

1190

1191

1192

1193

1194

1195

1196

1197

1198

1199

1200

1201

1202

1203

1204

1205

1206

1207

1208

1209

1210

1211

1212

1213

1214

1215

1216

1217

1218

1219

1220

1221

1222

1223

1224

1225

1226

1227

1228

1229

1230

1231

1232

1233

1234

1235

1236

1237

1238

1239

1240

1241

1242

1243

1244

1245

1246

1247

1248

1249

1250

1251

1252

1253

1254

1255

1256

1257

1258

1259

1260

1261

1262

1263

1264

1265

1266

1267

1268

1269

1270

1271

1272

1273

1274

1275

1276

1277

1278

1279

1280

1281

1282

1283

1284

1285

1286

1287

1288

1289

1290

1291

1292

1293

1294

1295

1296

1297

1298

1299

1300

1301

1302

1303

1304

1305

1306

1307

1308

1309

1310

1311

1312

13

## Unloading WestProPlus

To finish working with WestProPlus, choose the command **Quit** under the **WestProPlus** menu. The **WestProPlus** menu will disappear, but the current worksheets will stay in the Excel® window until you close them.

To remove the **WestProPlus** menu and uninstall the program:

1. **Quit** WestProPlus.
2. Under the **Tools** menu, select **Add-ins**. Deselect **WestProPlus** to remove the title from the add-ins list.
3. Close the Excel® window.

## 3. Using WestProPlus

### WestProPlus Input

The input data worksheet (fig.1) contains all the information needed by the program. Cells with question marks require numeric entries, except that initial timber prices are optional. WestProPlus converts numeric entries to one or two decimal places. Before running a simulation, WestProPlus checks all your entries and will prompt you to fix any improper input data.

In figure 1, the four rows labeled “**initial state**” contain the initial number of trees per acre in the stand (at time zero), by species groups and by 2-in diameter classes. WestProPlus recognizes four species groups: Douglas-fir, other shade-intolerant species, western hemlock, and other shade-tolerant species (App. 1, table 3).

The four rows labeled “**target state**” contain the number of trees per acre that should remain after harvest, by species group and diameter class. A target entry of zero instructs WestProPlus to harvest all trees in that category. When the number of trees in the stand exceeds the target value, the

harvest is the difference between the available trees and the target; otherwise the harvest is zero. You can avoid harvesting in any species group and size class by entering a very high target, e.g., 10,000. You can enter the initial and target states by hand or with the BDq calculator described below.

WestProPlus measures time in years. All simulations start at time zero and last for the “**Length of the simulation.**” The “**Year of first harvest**” may be set at any nonnegative integer value. The “**Length of cutting cycle**”, i.e., the interval between harvests, must be at least 1 year. To simulate stand growth without harvest, set the “**Year of the first harvest**” to a value greater than the “**Length of the simulation.**”

The “**Re-entry cost**” represents cost of doing a harvest, in dollars per acre, independent of the volume harvested. The cost of timber sale preparation and administration would be part of a typical re-entry cost.

The “**Site Productivity**”, measured by mean annual increment, describes the wood-growing capacity of a site. It is defined as the increment in volume of a timber stand averaged over the period between age zero and the age at which mean annual increment reaches its maximum value (Hanson et al. 2002). **If you do not enter any value for Site Productivity, WestProPlus assumes that the site productivity is 150 ft<sup>3</sup>/ac/yr**, the average site productivity in the 2,706 permanent plots in Washington and Oregon used to calibrate the growth equations of WestProPlus. The site productivity should be between 10 to 300 ft<sup>3</sup>/ac/yr, the range of the data.

The “**Site Index**” was measured by the average total height of the dominant and codominant trees at 50 years of age (Hanson et al. 2002). WestProPlus uses site index to predict log grade. The site index should be between 30 and 99, the range of the data.

The “**Interest Rate**” represents the initial interest rate. Starting from this initial value, WestProPlus generates a sequence of yearly stochastic interest rates. These interest rates are used to calculate the net present value of each harvest, and the cumulative net present value.

The “**Initial Timber Prices**” are the initial stumpage prices by log grade and species group. These entries are optional. If you leave these cells blank, WestProPlus will generate random initial prices. Starting from these initial values, WestProPlus generates a sequence of stochastic prices (App. 4).

## BDq Calculator

A BDq distribution is a tree distribution, by diameter class, defined by a stand basal area (B), a maximum and minimum tree diameter (D), and a q-ratio (q), the ratio of the number of trees in a given diameter class to the number of trees in the next larger class. You can use the BDq calculator (Schulte et al. 1998) to define the target state or the initial state with a BDq distribution.

To use the BDq calculator, click on the **BDq calculator** icon in the input data worksheet. Use the arrow buttons to set the stand basal area (ft<sup>2</sup>/ac), the q-ratio, the minimum and the maximum diameters (in.); click the **Calculate** button (fig. 2).

Basal Area: (sq ft/ac) 120 Maximum Diameter: (in.) 33 Q-ratio 1.3 Minimum Diameter: (in.) 3 Calculate Close

Trees/ac by size class

4	6	8	10	12	14	16	18	20	22	24	26	28	30	32	34	36	38	40+
36.760	28.277	21.751	16.732	12.870	9.9007	7.6159	5.8584	4.5064	3.4665	2.6665	2.0511	1.5778	1.2137	0.9336	0	0	0	0

Copy to Input Data worksheet as:

Douglas-fir: ☒ Initial Distribution ☐ Target Distribution

Other shade-intolerant species: ☐ Initial Distribution ☐ Target Distribution

Western hemlock: ☐ Initial Distribution ☐ Target Distribution

Other shade-tolerant species: ☐ Initial Distribution ☐ Target Distribution

Copy

Figure 2—The BDq Distribution Calculator window.

The example in figure 2 shows the number of trees by diameter class that would give a basal area of 120 ft<sup>2</sup>/ac with trees of diameters from 3 to 33 inches and a q-ratio of 1.3 for the Douglas-fir trees in the initial stand state. You can copy the resulting stand distribution to the input data worksheet

as the initial distribution or as the target distribution for a species group by selecting the destination and clicking the **Copy** button on the BDq calculator (fig. 2).

## Storing Data and Retrieving Stored Data

After entering data in the **Input Data** worksheet, you can save this worksheet for later use. You should save your work frequently to avoid losing data. It is advisable to save the work in a particular folder to facilitate locating the file in the future.

To run several simulations (e.g., to examine the effects of changing some of the parameters) you may find it efficient to work with previously saved input data. To retrieve the data, choose the **File** → **Open** command in Excel® to open your saved file or double click on the file icon.

## Running Simulations

After completing the input data worksheet or retrieving a previously saved one, you are ready to run a simulation. To run WestProPlus, make sure that the WestProPlus menu is in the Excel® menu bar. If not, click **WestProPlus** under the **Tools** menu to activate WestProPlus. You can then run the simulation by choosing **Run** in the **WestProPlus** menu.

Each WestProPlus simulation generates the following worksheets and charts:

A **TreesPerAcre** worksheet: The number of trees by species and diameter class for each simulated year.

A **Basal Area** worksheet: The basal area by species and timber size, for each simulated year.

A **Volume** worksheet: The volume in stock by log grade, for each simulated year.

A **Products** worksheet: The physical output and the financial return from the harvests throughout the simulation.

A **Diversity** worksheet: Shannon's species diversity indices and size diversity indices for each year of the simulation.

A **Diversity** chart: A plot of Shannon's indices of species and size diversity over time.

A **Species BA** chart: A stacked area chart showing the development of stand basal area by species group over time.

A **Size BA** chart: A stacked area chart showing the development of stand basal area by timber size over time.

A **Volume** chart: A stacked area chart showing the development of volume in stock by log grade over time.

To compare various management regimes, save the output worksheets immediately after running a simulation. Otherwise WestProPlus will overwrite the previous results every time you run a new simulation.

All the data in the output worksheets are protected and you cannot change them. To see how results change with different input data, change the input data worksheet and rerun the simulation.

#### **4. Example: Simulating BDq Management Regimes**

In this example, we performed simulations of selection regimes based on the basal-area-diameter-q-ratio (BDq) principle. For a given initial state, we changed the q-ratio of the target stand state, and interpreted the results in terms of effects on economic returns, productivity, tree diversity, wood quality, and stand structure. We concentrate on the q-ratio because it is the main effect in most uneven-aged management criteria (Liang et al. 2005b).



## Simulation Parameters

The simulations were for 200 years, with cutting cycles of 10 years. The initial stand state was the average distribution of the 2,706 permanent plots used in calibrating the growth equations of WestProPlus (fig. 3). Composition by number of trees was 34% Douglas-fir, 30% other shade-intolerant species, 20% western hemlock, and 16% other shade-tolerant species. The average site productivity was 150 ft<sup>3</sup>/ac/yr and the average 50-year site index was 90 ft.. The first harvest started at year 1. The fixed cost of re-entry was set at \$254/ac, the estimated cost of preparing and administering timber sales in the state of Washington (Ralston et al. 2003). The initial interest rate was set at 3.8% per year, the yield of AAA bonds net of inflation, from 1970 to 2004 (U.S. Government Printing Office, 2005). The initial stumpage prices came from Oregon stumpage prices in 2005 (Log Lines 2005, table 8).

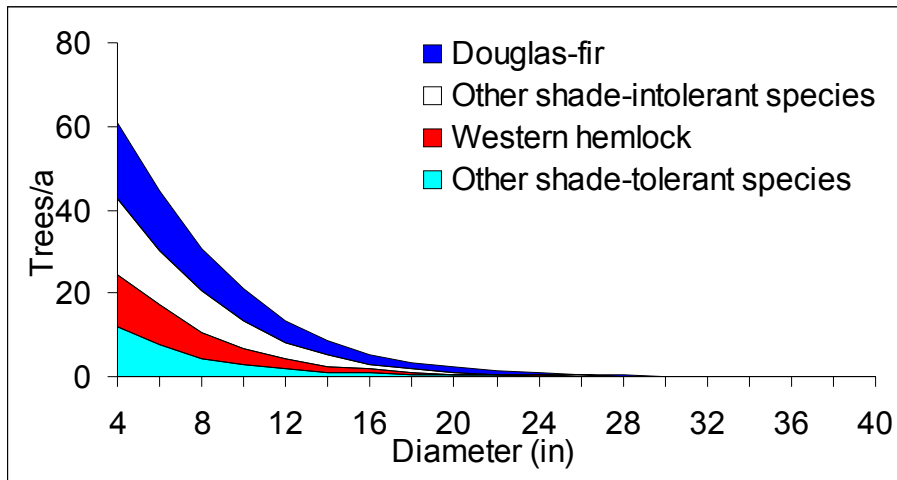


Figure 3—Initial stand state.

The three alternative target distributions are shown in figure 4. They all assumed a maximum diameter of 40 in. for all species. The basal area was kept the same in the three alternatives, 87 ft<sup>2</sup>/ac in total (Miller and Emmingham 2001), consisting of 30 ft<sup>2</sup>/ac of Douglas-fir, 26 ft<sup>2</sup>/ac of other shade-intolerant species, 17 ft<sup>2</sup>/ac of western hemlock, and 14 ft<sup>2</sup>/ac of other shade-tolerant species. The q-

ratio was set at 1.2, 1.4, or 1.8. Higher q values kept more trees in the smaller diameter classes relative to the large (fig. 4).

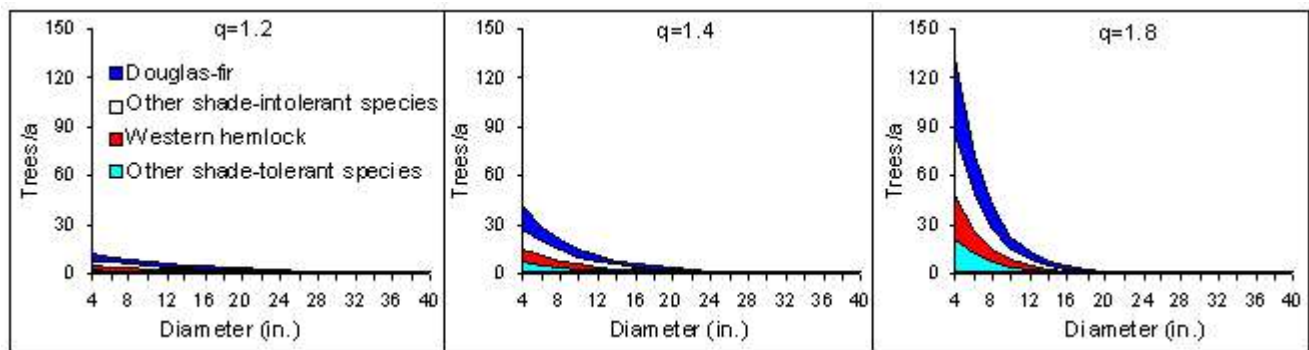


Figure 4—Target distribution of trees by species groups and diameter class for the BDq regime used here.

Figure 5 shows the BDq calculator set to produce the target state for Douglas-fir trees with basal area of 30 ft<sup>2</sup>/ac, maximum diameter of 40 in., and q-ratio of 1.2. Clicking on the **Calculate** button produces the number of trees by size class.

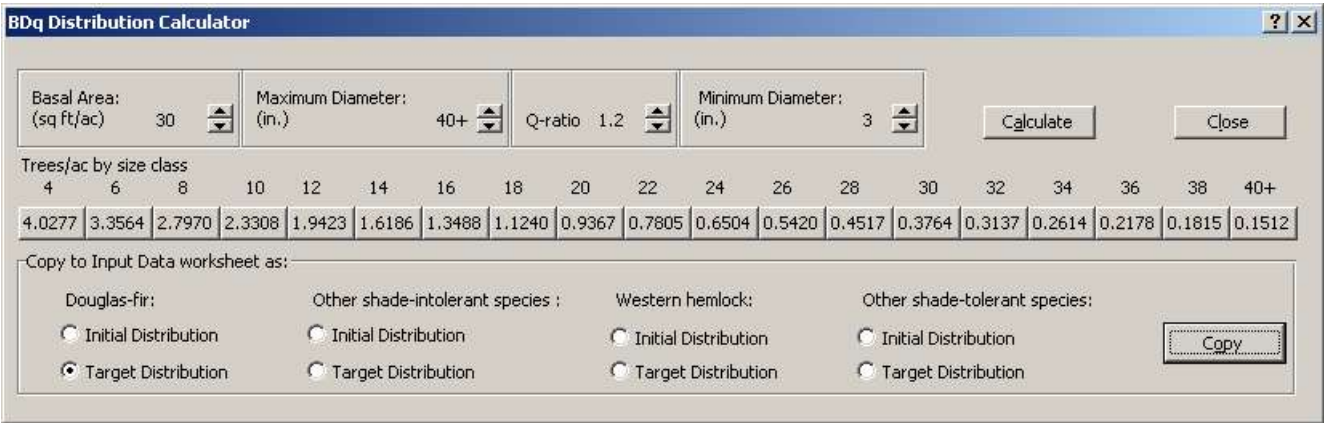


Figure 5—BDq Distribution Calculation dialog box.

To copy the distribution of Douglas-fir to the Input Data worksheet, select the option box corresponding to **Douglas-fir Target Distribution** and click on the **Copy** button. Figure 6 shows the Input Data worksheet for the above BDq selection regime with q=1.2.

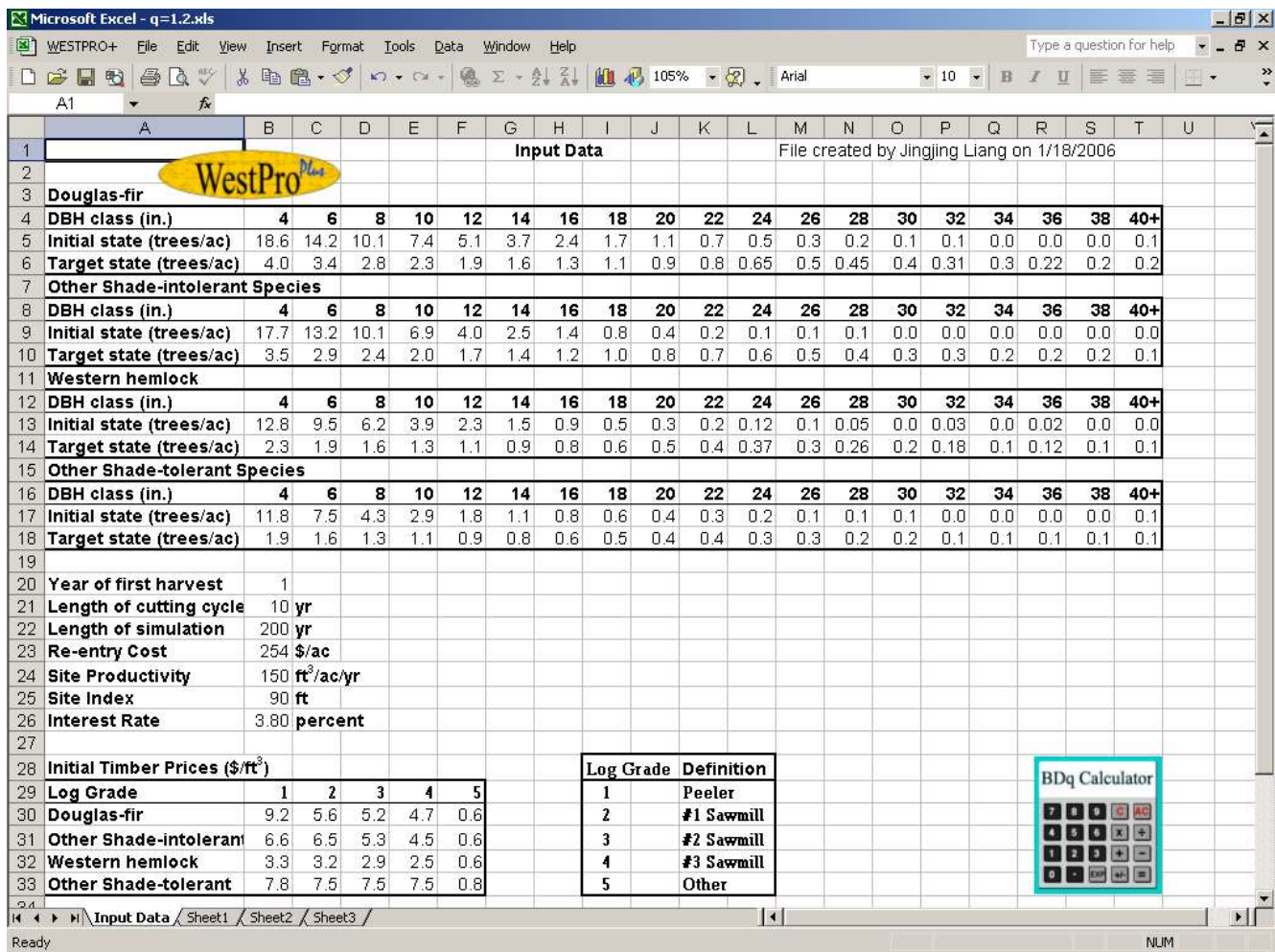


Figure 6—Input Data worksheet for the BDq selection regime with 87 ft<sup>2</sup>/ac residual basal area, 40 in. maximum diameter, q=1.2, and ten years cutting cycle.

## Running Simulations

Upon running a simulation, WestProPlus will replace any old tables and charts with new ones. For this reason, you should save the workbook after each simulation. To run a series of simulations, load the input data for the first management regime, run the simulation, save your outcome, and proceed to load and run the second management regime. You can then compare the data on economic return, various ecological criteria, and wood quality for different regimes. To that end, comparative charts and tables can be built with Excel® from the WestProPlus output worksheets.

## Simulation Output

The simulation outcomes of the forgoing BDq selection are displayed in tables and charts. They are located in the same workbook as the Input Data worksheet. The following results are for the initial condition and BDq management specified by the input data in figure 6.

***TreesPerAcre worksheet***— This worksheet (fig. 7) shows the number of trees per acre, by species and diameter class, for each year of simulation. Scrolling to the right reveals the tree distribution for other species. The underlined numbers are the year of harvest, and the number of trees per acre after the harvest.

***Basal Area Worksheet***—This worksheet (fig. 8) shows, for each simulated year, the total stand basal area, the stand basal area by species group, and the stand basal area by timber size category: poles (trees from 5 to 11 inches DBH), small sawtimber (trees from 11 to 15 inches DBH), medium sawtimber (trees from 15 to 21 inches DBH), and large sawtimber (trees 21 inches DBH and larger). Underlined numbers show the year of harvest and the basal areas just after harvest, and the first row represents the average basal area.

***Volume worksheet***— This worksheet (fig. 9) shows the volume in stock by log grade. The log grade equations used by WestProPlus are described in appendix 3. The underlined numbers represent the year of harvest and the volume per acre just after the harvest, and the first row represents the average volume.

**Products Worksheet**—The upper part of the products worksheet (fig. 10) shows data for each harvest: basal area cut, volume harvested by log grade, gross income, predicted net present value (NPV) of the current harvest, the total (cumulative) NPV, and the initial stock value. The log grade equations, and the stochastic stumpage price model and interest rate model used by WestProPlus are described in appendix 3 and 4.

The lower part of the products worksheet shows the average annual cut and the average stock in terms of basal area and volume by log grade. It also displays the average species diversity and size diversity.

The results show that with this particular BDq selection and a 10-year cutting cycle, the average yield over 200 years would be 71.06 ft<sup>3</sup>/ac/yr, for a net present value of \$16378.33/ac. This is the value of the land and initial trees, under this management. It suggests that this regime would be economically efficient. Because the value of the initial trees was \$11959.13/ac, the present value of the return from land and initial trees would exceed the initial investment in trees.

**Diversity Worksheet**—The diversity worksheet (fig. 11) shows Shannon's indices of species group diversity and tree size diversity for each simulated year (see App. 5 for the definitions of Shannon's diversity). The underlined data show the year of harvest and the values of the diversity indices just after harvest. The boldfaced values represent the average diversity indices of all years.

**Diversity Chart**—The Diversity Chart (fig. 12) displays the evolution of Shannon's indices over time. The results show that the effect of stochasticity in forest growth is greater than the effect of harvests on the species and size diversity.

***Species BA Chart***—This chart (fig. 13) shows the development of basal area by species throughout the simulation period. The chart shows the sharp decrease of total basal area is due to the periodic harvests. It also suggests that in the long run this management would sustain all four species groups in the stand.

***Timber Size BA Chart***—This chart (fig. 14) shows the development of basal area by timber size throughout the simulation. It excludes the basal area of trees smaller than poles (less than 5 inches in diameter). The results suggest that all the four size groups would remain present in the stand for 200 years. The basal area of large sawtimber would tend to increase over time with this management.

***Volume Chart***—This chart (fig. 15) shows the development of volume in stock by log grade throughout the simulation period. The chart suggests that all log grades would continue to be present in the stand. The stock of peeler, and #1 Sawmill logs tended to increase slightly over time under this management.

Microsoft Excel - q=1.2.xls															
WESTPRO+ File Edit View Insert Format Tools Data Window Help															
Type a question for help															
File created by Jingjing Liang on 1/18/2006															
File created by Jingjing Liang on 1/18/2006															
Site productivity		150.0	ft <sup>3</sup> /ac/yr												
Site index		90.0	ft												
DBH (in.)		4.0	6.0	8.0	10.0	12.0	14.0	16.0	18.0	20.0	22.0	24.0	26.0	28.0	30.0
Target(trees/ac)		4.0	3.4	2.8	2.3	1.9	1.6	1.3	1.1	0.9	0.8	0.7	0.5	0.5	0.4
Douglas-fir															
Year		Trees/ac													
0		17.0	13.7	9.6	7.0	5.0	3.6	2.9	1.7	1.1	0.7	0.5	0.3	0.2	0.1
1		4.1	3.3	2.8	2.3	2.0	1.6	1.4	1.1	0.9	0.8	0.5	0.4	0.1	0.1
2		4.2	3.3	2.8	2.4	2.0	1.7	1.4	1.2	1.0	0.8	0.6	0.4	0.2	0.1
3		4.3	3.3	2.8	2.4	1.9	1.5	1.3	1.7	0.9	0.8	0.6	0.4	0.2	0.1
4		4.4	3.4	2.8	2.4	2.0	1.6	1.3	1.6	1.0	0.8	0.6	0.5	0.2	0.2
5		3.8	4.3	1.6	3.9	1.6	1.5	1.3	1.6	1.1	0.9	0.7	0.5	0.3	0.2
6		3.9	2.4	2.7	0.8	4.6	2.6	1.9	1.4	1.5	0.7	0.9	0.5	0.3	0.2
7		3.1	2.0	2.4	0.9	4.1	2.8	2.0	1.4	1.5	0.8	0.8	0.5	0.4	0.2
8		3.1	2.0	2.3	1.1	3.7	3.0	2.0	1.5	1.5	0.9	0.8	0.6	0.4	0.2
9		3.0	1.0	0.4	2.1	1.7	2.1	2.0	1.2	0.9	1.0	0.7	0.6	0.5	0.3
10		3.0	1.1	0.4	1.9	1.7	2.0	2.0	1.3	0.9	0.9	0.8	0.6	0.5	0.3
11		0.0	5.7	0.0	0.0	0.8	1.4	1.3	1.1	1.2	0.8	0.7	0.6	0.5	0.3
12		0.4	5.1	0.6	0.0	0.7	1.6	1.1	1.1	1.2	0.7	0.6	0.7	0.4	0.4
13		0.8	4.6	1.7	0.0	0.3	1.6	1.2	1.1	1.0	0.9	0.6	0.8	0.5	0.3
14		0.9	3.9	2.8	0.0	0.4	1.5	1.0	1.0	1.0	0.9	0.6	0.8	0.5	0.4
15		20.5	0.1	8.7	5.4	1.0	0.9	1.0	1.0	1.0	0.9	0.7	0.8	0.6	0.4
16		18.9	1.7	7.8	5.6	1.3	0.6	1.4	0.7	1.3	0.8	0.7	0.7	0.6	0.4
17		16.7	2.1	8.6	6.2	2.3	0.9	1.3	0.9	0.8	1.1	0.8	0.5	0.8	0.4
18		14.2	3.6	8.0	6.9	2.4	1.0	1.1	0.9	0.7	1.2	1.1	0.5	0.8	0.5
19		13.3	4.3	7.4	6.9	2.8	1.1	1.1	0.9	0.7	1.1	1.1	0.6	0.7	0.5
20		9.7	8.2	6.6	7.7	3.4	0.7	1.1	1.8	0.3	1.0	1.0	0.8	0.7	0.5
21		3.4	3.0	2.6	2.3	1.9	0.8	1.0	1.0	0.3	0.9	0.6	0.5	0.5	0.4
22		3.3	2.9	4.4	1.4	2.7	1.4	0.0	1.5	0.1	0.4	0.5	0.6	0.4	0.4
23		11.2	4.2	3.7	1.5	2.4	1.4	0.3	1.1	0.4	0.5	0.4	0.6	0.4	0.4
24		13.1	6.6	4.0	2.5	1.4	1.9	0.0	1.1	0.6	0.5	0.3	0.5	0.4	0.4
25		12.3	6.9	4.1	2.2	1.7	0.4	1.3	1.1	0.2	0.2	0.8	0.4	0.4	0.3
26		19.2	6.5	3.9	2.1	1.7	0.5	1.1	1.1	0.3	0.2	0.7	0.5	0.4	0.3
27		12.8	1.3	0.0	2.5	2.6	0.0	0.3	1.3	1.2	0.1	0.6	0.5	0.4	0.4
28		11.9	2.2	0.1	2.2	2.6	0.3	0.3	1.1	1.2	0.3	0.5	0.5	0.4	0.4
29		0.3	0.7	4.1	1.3	2.3	1.6	0.3	0.8	1.3	0.6	0.4	0.4	0.4	0.4
30		0.3	0.7	4.1	1.3	2.3	1.6	0.3	0.8	1.3	0.6	0.4	0.4	0.4	0.4
31		0.3	0.7	4.1	1.3	2.3	1.6	0.3	0.8	1.3	0.6	0.4	0.4	0.4	0.4
32		0.3	0.7	4.1	1.3	2.3	1.6	0.3	0.8	1.3	0.6	0.4	0.4	0.4	0.4
33		0.3	0.7	4.1	1.3	2.3	1.6	0.3	0.8	1.3	0.6	0.4	0.4	0.4	0.4
34		0.3	0.7	4.1	1.3	2.3	1.6	0.3	0.8	1.3	0.6	0.4	0.4	0.4	0.4
35		0.3	0.7	4.1	1.3	2.3	1.6	0.3	0.8	1.3	0.6	0.4	0.4	0.4	0.4
36		0.3	0.7	4.1	1.3	2.3	1.6	0.3	0.8	1.3	0.6	0.4	0.4	0.4	0.4
37		0.3	0.7	4.1	1.3	2.3	1.6	0.3	0.8	1.3	0.6	0.4	0.4	0.4	0.4
38		0.3	0.7	4.1	1.3	2.3	1.6	0.3	0.8	1.3	0.6	0.4	0.4	0.4	0.4
39		0.3	0.7	4.1	1.3	2.3	1.6	0.3	0.8	1.3	0.6	0.4	0.4	0.4	0.4
40		0.3	0.7	4.1	1.3	2.3	1.6	0.3	0.8	1.3	0.6	0.4	0.4	0.4	0.4
41		0.3	0.7	4.1	1.3	2.3	1.6	0.3	0.8	1.3	0.6	0.4	0.4	0.4	0.4
42		0.3	0.7	4.1	1.3	2.3	1.6	0.3	0.8	1.3	0.6	0.4	0.4	0.4	0.4
43		0.3	0.7	4.1	1.3	2.3	1.6	0.3	0.8	1.3	0.6	0.4	0.4	0.4	0.4
44		0.3	0.7	4.1	1.3	2.3	1.6	0.3	0.8	1.3	0.6	0.4	0.4	0.4	0.4
45		0.3	0.7	4.1	1.3	2.3	1.6	0.3	0.8	1.3	0.6	0.4	0.4	0.4	0.4
46		0.3	0.7	4.1	1.3	2.3	1.6	0.3	0.8	1.3	0.6	0.4	0.4	0.4	0.4
47		0.3	0.7	4.1	1.3	2.3	1.6	0.3	0.8	1.3	0.6	0.4	0.4	0.4	0.4
48		0.3	0.7	4.1	1.3	2.3	1.6	0.3	0.8	1.3	0.6	0.4	0.4	0.4	0.4
49		0.3	0.7	4.1	1.3	2.3	1.6	0.3	0.8	1.3	0.6	0.4	0.4	0.4	0.4
50		0.3	0.7	4.1	1.3	2.3	1.6	0.3	0.8	1.3	0.6	0.4	0.4	0.4	0.4
51		0.3	0.7	4.1	1.3	2.3	1.6	0.3	0.8	1.3	0.6	0.4	0.4	0.4	0.4
52		0.3	0.7	4.1	1.3	2.3	1.6	0.3	0.8	1.3	0.6	0.4	0.4	0.4	0.4
53		0.3	0.7	4.1	1.3	2.3	1.6	0.3	0.8	1.3	0.6	0.4	0.4	0.4	0.4
54		0.3	0.7	4.1	1.3	2.3	1.6	0.3	0.8	1.3	0.6	0.4	0.4	0.4	0.4
55		0.3	0.7	4.1	1.3	2.3	1.6	0.3	0.8	1.3	0.6	0.4	0.4	0.4	0.4
56		0.3	0.7	4.1	1.3	2.3	1.6	0.3	0.8	1.3	0.6	0.4	0.4	0.4	0.4
57		0.3	0.7	4.1	1.3	2.3	1.6	0.3	0.8	1.3	0.6	0.4	0.4	0.4	0.4
58		0.3	0.7	4.1	1.3	2.3	1.6	0.3	0.8	1.3	0.6	0.4	0.4	0.4	0.4
59		0.3	0.7	4.1	1.3	2.3	1.6	0.3	0.8	1.3	0.6	0.4	0.4	0.4	0.4
60		0.3	0.7	4.1	1.3	2.3	1.6	0.3	0.8	1.3	0.6	0.4	0.4	0.4	0.4
61		0.3	0.7	4.1	1.3	2.3	1.6	0.3	0.8	1.3	0.6	0.4	0.4	0.4	0.4
62		0.3	0.7	4.1	1.3	2.3	1.6	0.3	0.8	1.3	0.6	0.4	0.4	0.4	0.4
63		0.3	0.7	4.1	1.3	2.3	1.6	0.3	0.8	1.3	0.6	0.4	0.4	0.4	0.4
64		0.3	0.7	4.1	1.3	2.3	1.6	0.3	0.8	1.3	0.6	0.4	0.4	0.4	0.4
65		0.3	0.7	4.1	1.3	2.3	1.6	0.3	0.8	1.3	0.6	0.4	0.4	0.4	0.4
66		0.3	0.7	4.1	1.3	2.3	1.6	0.3	0.8	1.3	0.6	0.4	0.4	0.4	0.4
67		0.3	0.7	4.1	1.3	2.3	1.6	0.3	0.8	1.3	0.6	0.4	0.4	0.4	0.4
68		0.3	0.7	4.1	1.3	2.3	1.6	0.3	0.8	1.3	0.6	0.4	0.4	0.4	0.4
69		0.3	0.7	4.1	1.3	2.3	1.6	0.3	0.8	1.3	0.6	0.4	0.4	0.4	0.4
70		0.3	0.7	4.1	1.3	2.3	1.6	0.3	0.8	1.3	0.6	0.4	0.4	0.4	0.4
71		0.3	0.7	4.1	1.3	2.3	1.6	0.3	0.8	1.3	0.6	0.4	0.4	0.4	0.4
72		0.3	0.7	4.1	1.3	2.3	1.6	0.3	0.8	1.3	0.6	0.4	0.4	0.4	0.4
73		0.3	0.7	4.1	1.3	2.3	1.6	0.3	0.8	1.3	0.6	0.4	0.4	0.4	0.4
74		0.3	0.7	4.1	1.3	2.3	1.6	0.3	0.8	1.3	0.6	0.4	0.4	0.4	0.4
75		0.3	0.7	4.1	1.3	2.3	1.6	0.3	0.8	1.3	0.6	0.4	0.4	0.4	0.4
76		0.3	0.7	4.1	1.3	2.3	1.6	0.3	0.8	1.3	0.6	0.4	0.4	0.4	0.4
77		0.3	0.7	4.1	1.3	2.3	1.6	0.3	0.8	1.3	0.6	0.4	0.4	0.4	0.4
78		0.3	0.7	4.1	1.3	2.3	1.6	0.3	0.8	1.3	0.6	0.4	0.4	0.4	0.4
79		0.3	0.7	4.1	1.3	2.3	1.6	0.3	0.8	1.3	0.6	0.4	0.4	0.4	0.4
80		0.3	0.7	4.1	1.3	2.3	1.6	0.3	0.8	1.3	0.6	0.4	0.4	0.4	0.4
81		0.3	0.7	4.1	1.3	2.3	1.6	0.3	0.8	1.3	0.6	0.4	0.4	0.4	0.4
82		0.3	0.7	4.1	1.3	2.3	1.6	0.3	0.8	1.3	0.6	0.4	0.4	0.4	0.4
83		0.3	0.7	4.1	1.3	2.3	1.6	0.3	0.8	1.3	0.6	0.4	0.4	0.4	0.4
84		0.3	0.7	4.1	1.3	2.3	1.6	0.3	0.8	1.3	0.6	0.4	0.4	0.4	0.4
85		0.3	0.7	4.1	1.3	2.3	1.6	0.3	0.8	1.3	0.6	0.4	0.4	0.4	0.4
86		0.3	0.7	4.1	1.3	2.3	1.6	0.3	0.8	1.3	0.6	0.4	0.4	0.4	0.4
87		0.3	0.7	4.1	1.3	2.3	1.6	0.3	0.8	1.3	0.6	0.4	0.4	0.4	0.4
88		0.3	0.7	4.1	1.3	2.3	1.6	0.3	0.8	1.3	0.6	0.4	0.4	0.4	0.4
89		0.3	0.7	4.1	1.3	2.3	1.6	0.3	0.8	1.3	0.6	0.4	0.4	0.4	0.4
90		0.3	0.7	4.1	1.3	2.3	1.6	0.3	0.8	1.3	0.6	0.4	0.4	0.4	0.4
91		0.3	0.7	4.1	1.3	2.3	1.6	0.3	0.8	1.3	0.6	0.4	0.4	0.4	0.4
92		0.3	0.7	4.1	1.3	2.3	1.6	0.3	0.8	1.3	0.6	0.4	0.4	0.4	0.4
93		0.3	0.7	4.1	1.3	2.3	1.6	0.3	0.8	1.3	0.6	0.4	0.4	0.4	0.4
94		0													

Figure 7—TreePerAcre worksheet for the BDq selection regime with 87 ft<sup>2</sup>/ac residual basal area, 40 in. maximum diameter, q=1.2, and ten years cutting cycle.



Microsoft Excel - q=1.2.xls										
WESTPRO+ File Edit View Insert Format Tools Data Window Help										
Type a question for help										
File created by Jingjing Liang on 1/18/2006										
A1										
1	File created by Jingjing Liang on 1/18/2006									
2										
3	Site productivity 150.0 ft3/ac/yr									
4	Site index 90.0 ft									
5										
6	Total	Douglas-fir	Other Shade-Intolerant	Western hemlock	Other Shade-tolerant	Pole D<11 in.	Small Timber 11≤D<15	Medium Timber 15≤D<21	Large Timber D≥21 in.	
7										
8	Basal Area ft2/ac									
9	Average	77.5	30.8	16.3	16.4	14.1	11.8	7.8	12.5	45.5
10	Year									
11	0	90.9	36.3	23.7	15.9	15.0	36.2	19.9	18.8	16.0
12	1	51.3	20.3	12.2	9.0	9.8	9.4	9.4	15.5	16.8
13	2	53.1	21.4	12.6	9.3	9.9	9.5	9.6	16.4	17.6
14	3	51.6	22.2	9.1	9.9	10.4	7.4	9.1	15.8	19.2
15	4	54.6	23.3	10.3	10.3	10.8	9.4	8.3	16.5	20.5
16	5	55.4	24.1	8.7	10.9	11.7	7.8	7.8	18.1	21.7
17	6	58.2	25.0	8.9	12.2	12.1	9.0	7.4	18.7	23.2
18	7	64.7	28.9	9.3	14.0	12.5	8.8	11.1	20.1	24.6
19	8	66.1	29.5	9.3	14.5	12.8	8.6	11.2	20.0	26.4
20	9	68.0	30.5	9.2	15.2	13.2	9.2	11.3	19.4	28.1
21	10	64.3	25.4	9.4	15.8	13.6	9.3	8.8	17.5	28.7
22	11	55.0	23.5	8.3	12.0	11.2	5.1	8.0	14.3	27.6
23	12	55.0	22.8	8.5	12.0	11.6	4.8	6.5	14.6	29.1
24	13	58.7	23.4	10.8	12.5	12.0	6.6	7.3	14.3	30.6
25	14	63.8	24.4	12.9	14.1	12.4	8.7	6.0	16.2	32.8
26	15	65.7	24.8	13.2	15.0	12.7	10.1	6.8	14.3	34.5
27	16	70.2	31.3	13.6	12.2	13.1	13.9	6.3	14.3	35.7
28	17	73.3	32.6	13.8	12.6	14.3	14.5	6.6	15.5	36.8
29	18	75.3	33.5	13.9	13.1	14.8	15.2	7.6	14.3	38.1
30	19	78.9	34.9	14.3	14.3	15.4	16.1	8.5	13.8	40.5
31	20	82.5	36.0	15.8	14.8	15.9	16.5	10.1	14.0	41.8
32	21	62.4	24.8	11.8	13.0	12.8	8.0	6.9	11.3	36.2
33	22	63.7	25.3	12.0	13.2	13.1	7.5	7.0	11.3	37.9
34	23	63.1	24.0	12.3	13.3	13.5	7.7	8.4	9.7	37.3
35	24	65.5	25.6	11.4	14.2	14.3	7.7	7.7	11.3	38.8
36	25	67.7	26.0	12.4	14.6	14.7	10.3	7.2	10.8	39.2
37	26	69.0	26.2	12.7	14.9	15.1	10.4	6.2	11.5	40.9
38	27	70.4	27.2	12.8	15.0	15.2	10.5	6.7	11.7	42.2
39	28	71.8	28.1	12.9	15.1	15.3	10.6	7.2	11.9	43.5
40	29	73.2	29.0	13.0	15.2	15.4	10.7	7.7	12.1	44.8
41	30	74.6	29.9	13.1	15.3	15.5	10.8	8.2	12.3	46.1
42	31	76.0	30.8	13.2	15.4	15.6	10.9	8.7	12.5	47.4
43	32	77.4	31.7	13.3	15.5	15.7	11.0	9.2	12.7	48.7
44	33	78.8	32.6	13.4	15.6	15.8	11.1	9.7	12.9	50.0
45	34	80.2	33.5	13.5	15.7	15.9	11.2	10.2	13.1	51.3
46	35	81.6	34.4	13.6	15.8	16.0	11.3	10.7	13.3	52.6
47	36	83.0	35.3	13.7	15.9	16.1	11.4	11.2	13.5	53.9
48	37	84.4	36.2	13.8	16.0	16.2	11.5	11.7	13.7	55.2
49	38	85.8	37.1	13.9	16.1	16.3	11.6	12.2	13.9	56.5
50	39	87.2	38.0	14.0	16.2	16.4	11.7	12.7	14.1	57.8
51	40	88.6	38.9	14.1	16.3	16.5	11.8	13.2	14.3	59.1
52	41	90.0	39.8	14.2	16.4	16.6	11.9	13.7	14.5	60.4
53	42	91.4	40.7	14.3	16.5	16.7	12.0	14.2	14.7	61.7
54	43	92.8	41.6	14.4	16.6	16.8	12.1	14.7	14.9	63.0
55	44	94.2	42.5	14.5	16.7	16.9	12.2	15.2	15.1	64.3
56	45	95.6	43.4	14.6	16.8	17.0	12.3	15.7	15.3	65.6
57	46	97.0	44.3	14.7	16.9	17.1	12.4	16.2	15.5	66.9
58	47	98.4	45.2	14.8	17.0	17.2	12.5	16.7	15.7	68.2
59	48	99.8	46.1	14.9	17.1	17.3	12.6	17.2	15.9	69.5
60	49	101.2	47.0	15.0	17.2	17.4	12.7	17.7	16.1	70.8
61	50	102.6	47.9	15.1	17.3	17.5	12.8	18.2	16.3	72.1
62	51	104.0	48.8	15.2	17.4	17.6	12.9	18.7	16.5	73.4
63	52	105.4	49.7	15.3	17.5	17.7	13.0	19.2	16.7	74.7
64	53	106.8	50.6	15.4	17.6	17.8	13.1	19.7	16.9	76.0
65	54	108.2	51.5	15.5	17.7	17.9	13.2	20.2	17.1	77.3
66	55	109.6	52.4	15.6	17.8	18.0	13.3	20.7	17.3	78.6
67	56	111.0	53.3	15.7	17.9	18.1	13.4	21.2	17.5	79.9
68	57	112.4	54.2	15.8	18.0	18.2	13.5	21.7	17.7	81.2
69	58	113.8	55.1	15.9	18.1	18.3	13.6	22.2	17.9	82.5
70	59	115.2	56.0	16.0	18.2	18.4	13.7	22.7	18.1	83.8
71	60	116.6	56.9	16.1	18.3	18.5	13.8	23.2	18.3	85.1
72	61	118.0	57.8	16.2	18.4	18.6	13.9	23.7	18.5	86.4
73	62	119.4	58.7	16.3	18.5	18.7	14.0	24.2	18.7	87.7
74	63	120.8	59.6	16.4	18.6	18.8	14.1	24.7	18.9	89.0
75	64	122.2	60.5	16.5	18.7	18.9	14.2	25.2	19.1	90.3
76	65	123.6	61.4	16.6	18.8	19.0	14.3	25.7	19.3	91.6
77	66	125.0	62.3	16.7	18.9	19.1	14.4	26.2	19.5	92.9
78	67	126.4	63.2	16.8	19.0	19.2	14.5	26.7	19.7	94.2
79	68	127.8	64.1	16.9	19.1	19.3	14.6	27.2	19.9	95.5
80	69	129.2	65.0	17.0	19.2	19.4	14.7	27.7	20.1	96.8
81	70	130.6	65.9	17.1	19.3	19.5	14.8	28.2	20.3	98.1
82	71	132.0	66.8	17.2	19.4	19.6	14.9	28.7	20.5	99.4
83	72	133.4	67.7	17.3	19.5	19.7	15.0	29.2	20.7	100.7
84	73	134.8	68.6	17.4	19.6	19.8	15.1	29.7	20.9	102.0
85	74	136.2	69.5	17.5	19.7	19.9	15.2	30.2	21.1	103.3
86	75	137.6	70.4	17.6	19.8	20.0	15.3	30.7	21.3	104.6
87	76	139.0	71.3	17.7	19.9	20.1	15.4	31.2	21.5	105.9
88	77	140.4	72.2	17.8	20.0	20.2	15.5	31.7	21.7	107.2
89	78	141.8	73.1	17.9	20.1	20.3	15.6	32.2	21.9	108.5
90	79	143.2	74.0	18.0	20.2	20.4	15.7	32.7	22.1	109.8
91	80	144.6	74.9	18.1	20.3	20.5	15.8	33.2	22.3	111.1
92	81	146.0	75.8	18.2	20.4	20.6	15.9	33.7	22.5	112.4
93	82	147.4	76.7	18.3	20.5	20.7	16.0	34.2	22.7	113.7
94	83	148.8	77.6	18.4	20.6	20.8	16.1	34.7	22.9	115.0
95	84	150.2	78.5	18.5	20.7	20.9	16.2	35.2	23.1	116.3
96	85	151.6	79.4	18.6	20.8	21.0	16.3	35.7	23.3	117.6
97	86	153.0	80.3	18.7	20.9	21.1	16.4	36.2	23.5	118.9
98	87	154.4	81.2	18.8	21.0	21.2	16.5	36.7	23.7	120.2
99	88	155.8	82.1	18.9	21.1	21.3	16.6	37.2	23.9	121.5
100	89	157.2	83.0	19.0	21.2	21.4	16.7	37.7	24.1	122.8
101	90	158.6	83.9	19.1	21.3	21.5	16.8	38.2	24.3	124.1
102	91	160.0	84.8	19.2	21.4	21.6	16.9	38.7	24.5	125.4
103	92	161.4	85.7	19.3	21.5	21.7	17.0	39.2	24.7	126.7
104	93	162.8	86.6	19.4	21.6	21.8	17.1	39.7	24.9	128.0
105	94	164.2	87.5	19.5	21.7	21.9	17.2	40.2	25.1	129.3
106	95	165.6	88.4	19.6	21.8	22.0	17.3	40.7	25.3	130.6
107	96	167.0	89.3	19.7	21.9	22.1	17.4	41.2	25.5	131.9
108	97	168.4	90.2	19.8	22.0	22.2	17.5	41.7	25.7	133.2
109	98	169.8	91.1	19.9	22.1	22.3	17.6	42.2	25.9	134.5
110	99	171.2	92.0	20.0	22.2	22.4	17.7	42.7	26.1	135.8
111	100	172.6	92.9	20.1	22.3	22.5	17.8	43.2	26.3	137.1
112	101	174.0	93.8	20.2	22.4	22.6	17.9	43.7	26.5	138.4
113	102	175.4	94.7	20.3	22.5	22.7	18.0	44.2	26.7	139.7
114	103	176.8	95.6	20.4	22.6	22.8	18.1	44.7	26.9	141.0
115	104	178.2	96.5	20.5	22.7	22.9	18.2	45.2	27.1	142.3
116	105	179.6	97.4	20.6	22.8	23.0	18.3	45.7	27.3	143.6
117	106	181.0	98.3	20.7	22.9	23.1	18.4	46.2	27.5	144.9
118	107	182.4	99.2	20.8	23.0	23.2	18.5	46.7	27.7	146.2
119										



Microsoft Excel - q=1.2.xls

WESTPRO+ File Edit View Insert Format Tools Data Window Help

Type a question for help

File created by Jingjing Liang on 1/18/2006

	A	B	C	D	E	F	G	H	I	J	K	L	M	N	O
1	File created	by Jingjing Liang on 1/18/2006													
2															
3		Site productivity	150.0	ft <sup>3</sup> /ac/yr											
4		Site index	90.0	ft											
5															
6		Total	Grade 1	Grade 2	Grade 3	Grade 4	Grade 5								
7															
8			Volume	ft <sup>3</sup> /ac											
9	Average	2513.2	776.3	395.4	1092.9	229.8	18.9								
10	Year														
11	0	2140.0	445.4	242.8	825.1	617.4	9.3								
12	1	1446.0	327.5	181.7	678.3	249.7	8.9								
13	2	1505.9	349.2	186.9	712.1	248.5	9.2								
14	3	1491.5	368.3	182.5	738.0	193.2	9.4								
15	4	1599.3	395.7	187.8	769.6	236.3	9.8								
16	5	1639.6	417.8	196.5	825.2	190.1	10.1								
17	6	1705.7	438.7	204.1	867.6	184.6	10.8								
18	7	1890.3	508.7	218.0	951.0	202.0	10.5								
19	8	1964.4	534.8	225.8	984.4	208.3	11.1								
20	9	2016.3	562.0	230.3	1000.2	212.8	11.1								
21	10	1921.9	508.5	236.1	963.4	202.1	11.8								
22	11	1732.1	485.5	206.1	862.1	169.2	9.3								
23	12	1753.4	502.0	213.1	879.1	149.1	10.1								
24	13	1848.5	519.5	230.4	905.5	180.9	12.1								
25	14	2002.3	547.4	248.3	996.5	196.2	14.0								
26	15	2057.9	562.9	256.2	987.7	237.2	13.9								
27	16	2101.1	591.9	266.5	1015.0	213.7	14.1								
28	17	2187.0	628.0	275.2	1051.3	218.7	13.9								
29	18	2221.2	639.8	279.9	1071.0	216.8	13.6								
30	19	2334.4	674.8	293.5	1119.6	231.9	14.6								
31	20	2469.3	707.3	309.9	1162.8	275.9	13.5								
32	21	1999.5	587.3	266.8	940.3	194.4	10.6								
33	22	2071.2	614.5	277.0	971.9	196.4	11.4								
34	23	2029.3	594.4	286.4	936.9	199.4	12.1								
35	24	2116.2	627.8	299.1	997.2	179.1	13.0								
36	25	2120.7	632.2	299.3	1008.1	167.7	13.3								
37	26	2180.5	655.6	310.7	1026.6	173.4	14.1								
38	27	2225.9	684.1	322.2	1044.7	155.8	14.8								

Size BA Chart Species BA Chart Diversity Volume Basal Area TreesPerAcre Products

Figure 9—Volume worksheet for the BDq selection regime with 87 ft<sup>2</sup>/ac residual basal area, 40 in. maximum diameter, q=1.2, and ten years cutting cycle.

Microsoft Excel - q=1.2.xls												
WESTPRO+ File Edit View Insert Format Tools Data Window Help												
Type a question for help												
A1 Periodic Cut												
1	Periodic Cut											
2	Year	1	11	21	31	41	51	61	71	81	91	101
3	Basal area (ft <sup>2</sup> /ac)	41.8	10.4	23.7	12.9	24.3	27.4	30.1	22.0	42.6	58.3	29.4
4	Grade 1 (ft <sup>3</sup> /ac)	181.4	84.7	161.0	177.5	330.3	312.0	185.0	327.5	398.4	499.5	405.7
5	Grade 2 (ft <sup>3</sup> /ac)	85.0	37.8	54.4	50.3	62.8	132.7	153.7	160.3	146.6	124.5	133.5
6	Grade 3 (ft <sup>3</sup> /ac)	136.3	77.1	216.8	126.7	233.6	246.7	223.2	277.9	361.7	360.0	303.3
7	Grade 4 (ft <sup>3</sup> /ac)	300.3	27.0	101.5	14.0	22.5	84.5	262.5	17.7	83.3	88.3	47.6
8	Grade 5 (ft <sup>3</sup> /ac)	0.6	2.8	2.5	3.7	4.0	7.8	3.2	7.3	6.3	4.2	3.3
9	Gross income (\$/ac)	8311.3	8096.6	8267.9	4621.0	6801.5	9275.8	11970.2	13942.5	14155.6	10072.8	9303.7
10	Net present value (\$/ac)	7449.76	4332.10	1905.84	415.92	387.96	497.13	428.34	370.82	271.54	110.33	70.93
11	Total NPV (\$/ac)	16378.33										
12	Initial stock value (\$/ac)	11959.13										
13												
14	Average Annual Cut											
15	Basal area	2.9 (ft <sup>2</sup> /ac/yr)										
16	Grade 1	29.7 (ft <sup>2</sup> /ac/yr)										
17	Grade 2	10.9 (ft <sup>2</sup> /ac/yr)										
18	Grade 3	23.0 (ft <sup>2</sup> /ac/yr)										
19	Grade 4	7.7 (ft <sup>2</sup> /ac/yr)										
20	Grade 5	0.4 (ft <sup>2</sup> /ac/yr)										
21	Total Volume	71.86 (ft <sup>2</sup> /ac/yr)										
22												
23	Average Stock											
24	Basal area	77.5 (ft <sup>2</sup> /ac)										
25	Grade 1	776.3 (ft <sup>2</sup> /ac)										
26	Grade 2	395.4 (ft <sup>2</sup> /ac)										
27	Grade 3	1092.9 (ft <sup>2</sup> /ac)										
28	Grade 4	229.8 (ft <sup>2</sup> /ac)										
29	Grade 5	18.9 (ft <sup>2</sup> /ac)										
30	Total Volume	2513.21 (ft <sup>2</sup> /ac)										
31	Species diversity	1.32 (Shannon's index)										
32	size diversity	2.86 (Shannon's index)										
33												
34	Length of simulation	200 (yr)										
35												

Figure 10—Products worksheet for the BDq selection regime with 87 ft<sup>2</sup>/ac residual basal area, 40 in. maximum diameter, q=1.2, and ten years cutting cycle.

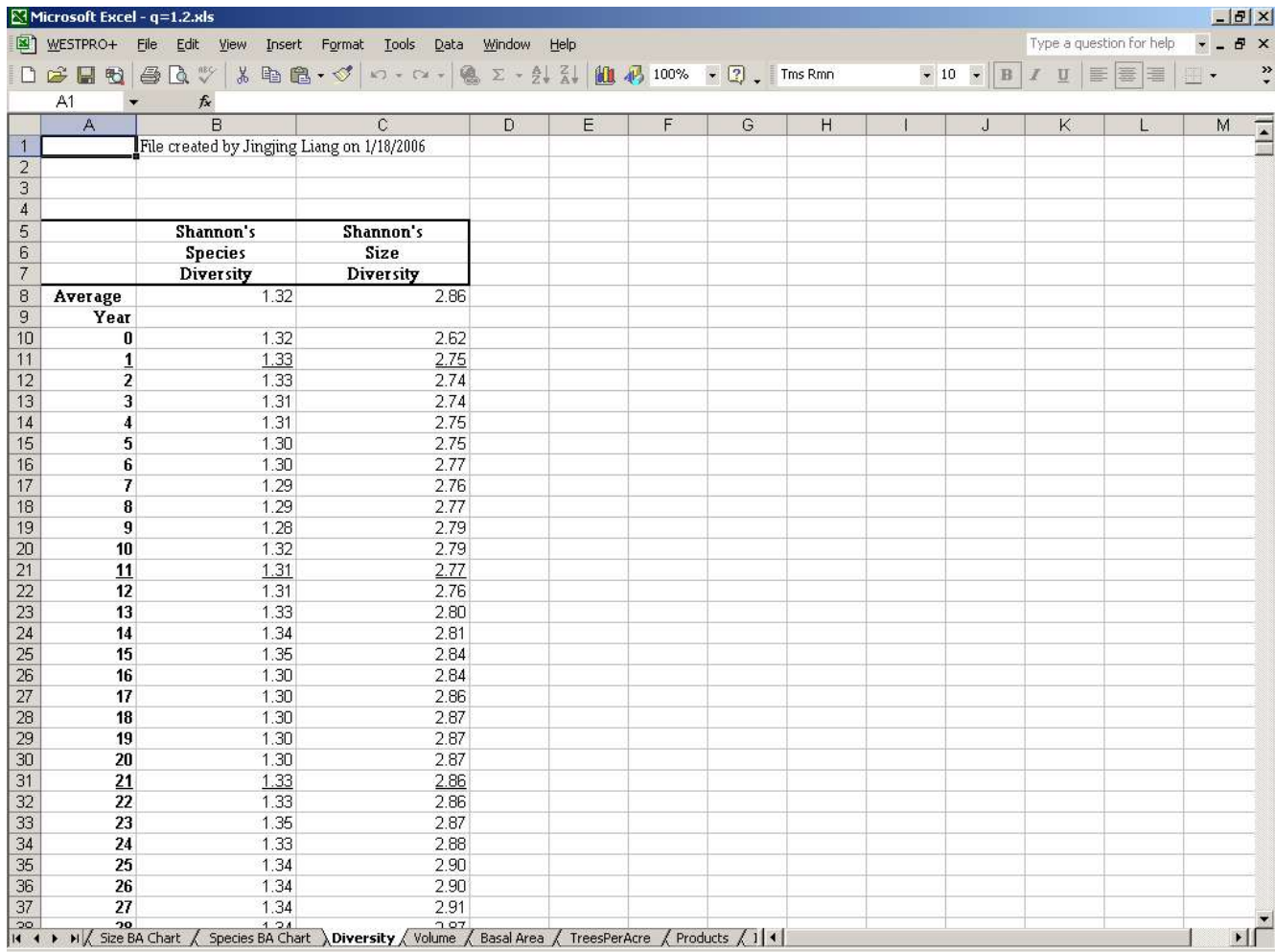


Figure 11—Diversity worksheet for the BDq selection regime with 87 ft<sup>2</sup>/ac residual basal area, 40 in. maximum diameter, q=1.2, and ten years cutting cycle.

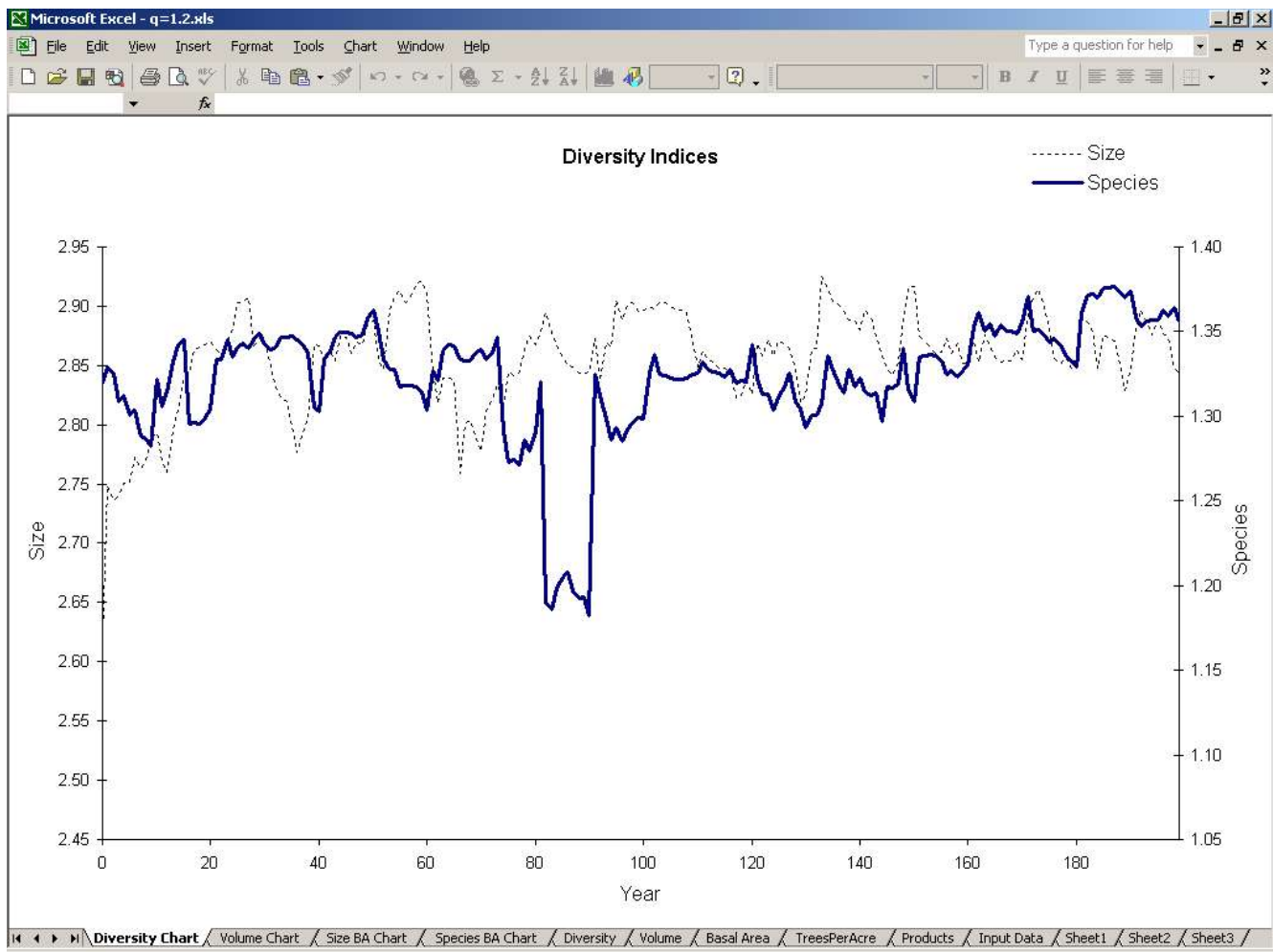


Figure 12—Diversity chart for the BDq selection regime with 87 ft<sup>2</sup>/ac residual basal area, 40 in. maximum diameter, q=1.2, and ten years cutting cycle.

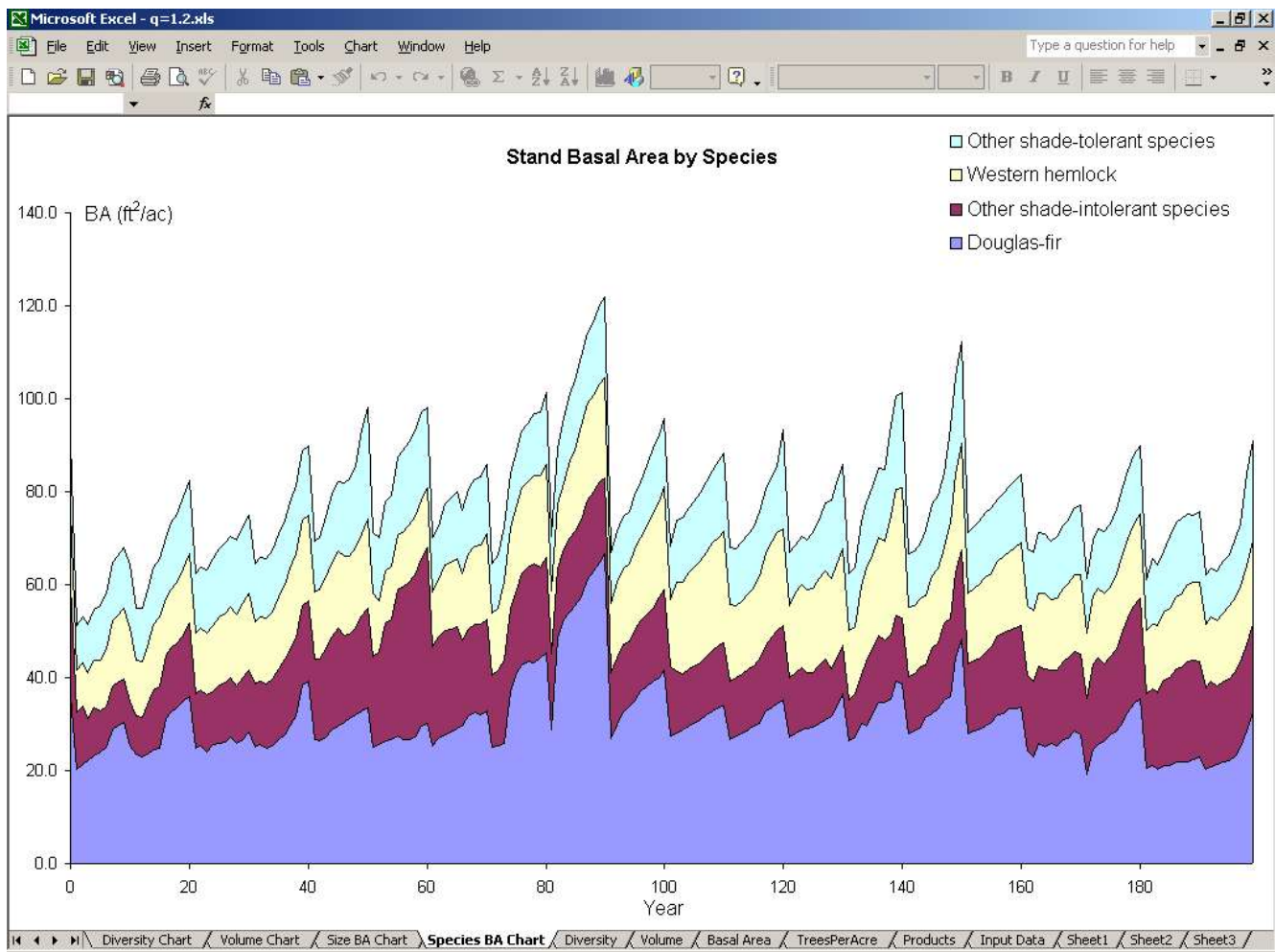


Figure 13—Species Basal Area chart for the BDq selection regime with 87  $\text{ft}^2/\text{ac}$  residual basal area, 40 in. maximum diameter,  $q=1.2$ , and ten years cutting cycle.

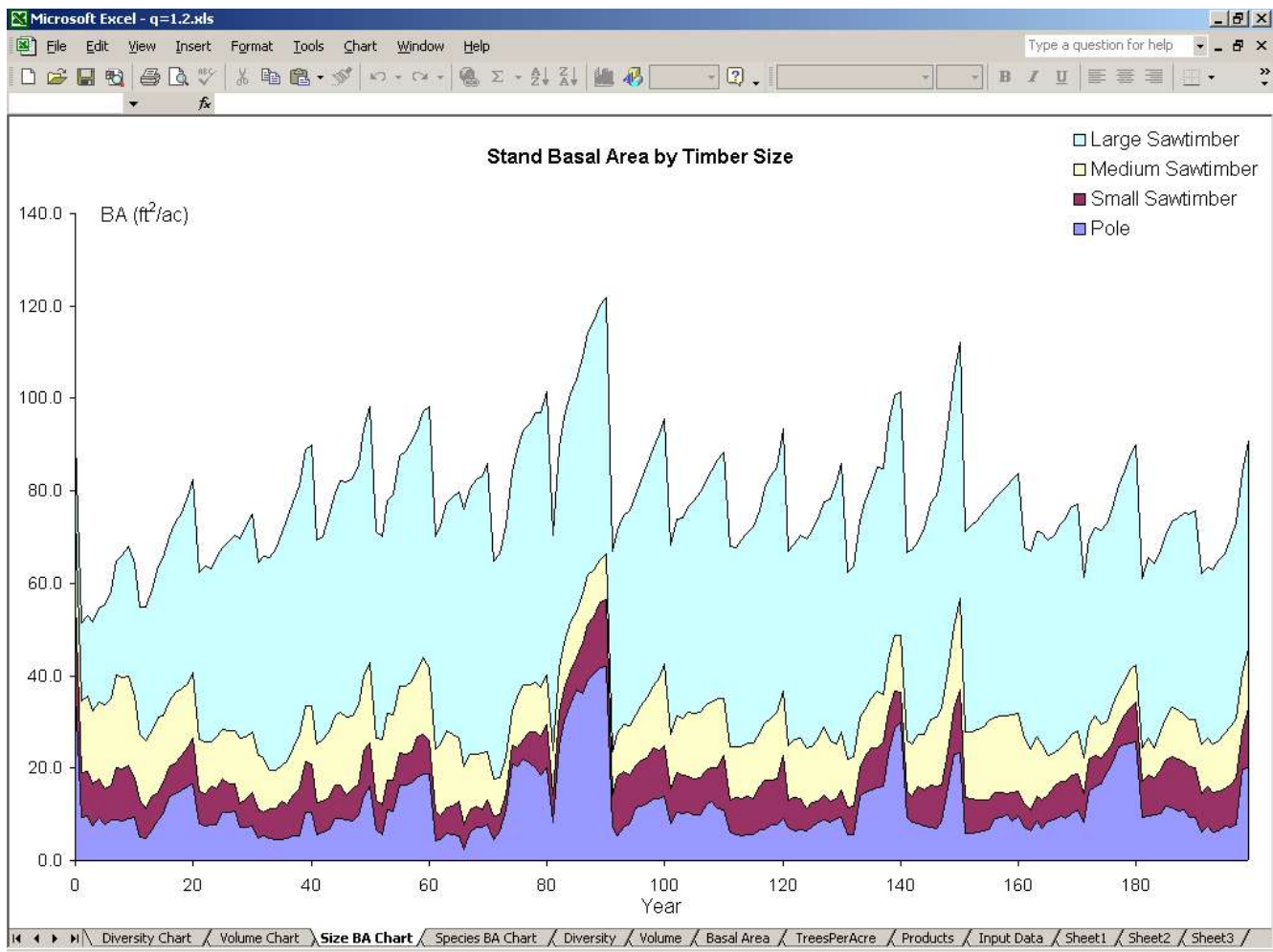


Figure 14—Timber Size BA chart for the BDq selection regime with 87  $\text{ft}^2/\text{ac}$  residual basal area, 40 in. maximum diameter,  $q=1.2$ , and ten years cutting cycle.



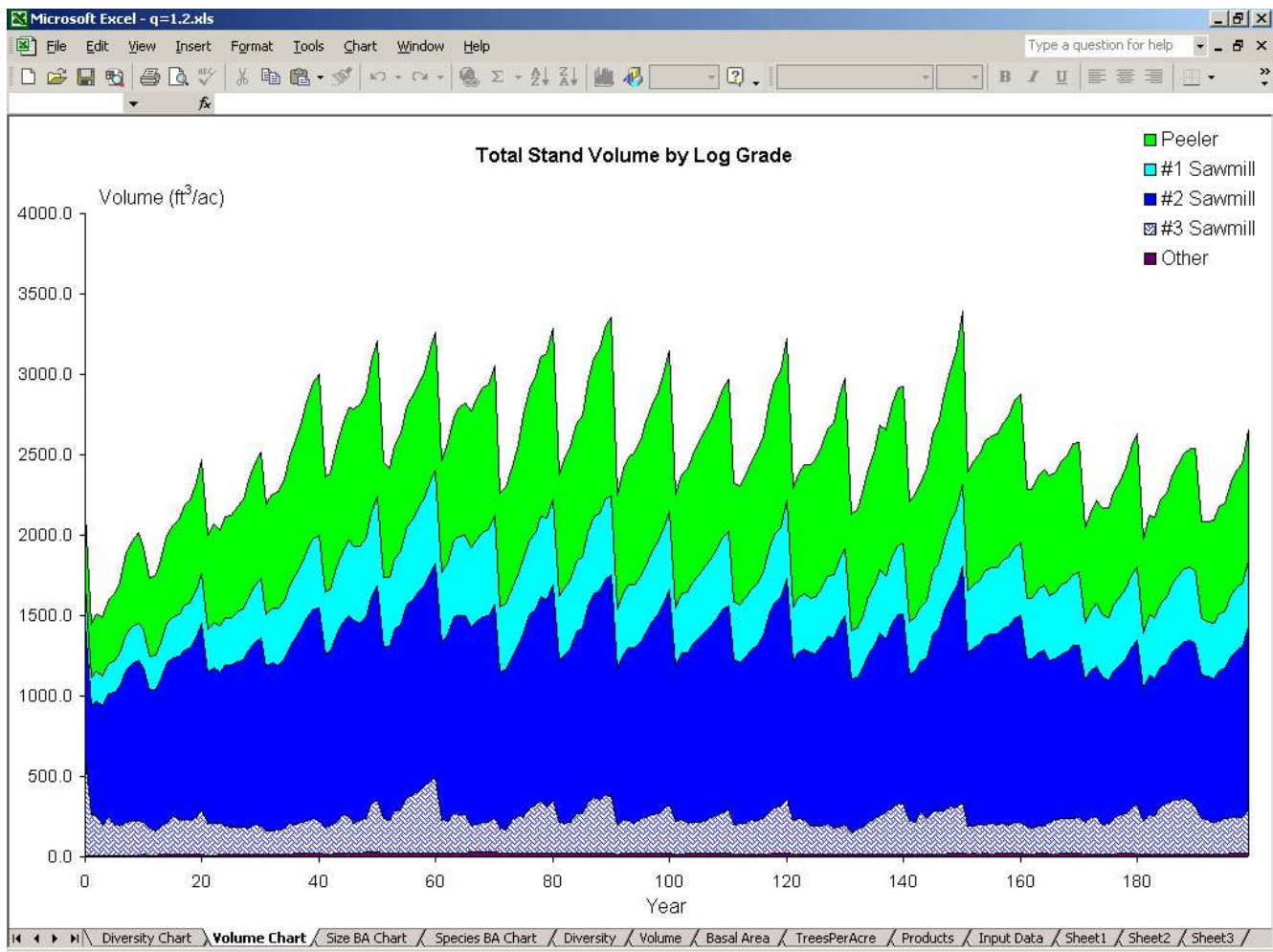


Figure 15—Volume chart for the BDq selection regime with 87 ft²/ac residual basal area, 40 in. maximum diameter,  $q=1.2$ , and ten years cutting cycle.

## Comparison of BDq Selection Regimes

As an example of how WestProPlus can be used to compare managements, follow the steps below to compare BDq selection regimes with a ten-year cutting cycle, 87 ft<sup>2</sup>/ac residual basal area, 40 in. maximum diameter, and a q-ratio of 1.2, 1.4, or 1.8:

- 1) Load WestProPlus, fill in, and save three input data worksheets corresponding to the three q-ratios,
- 2) Run a simulation for each input data worksheet and record the total net present value (\$/ac), productivity (ft<sup>3</sup>/ac/yr), average stand diversity of tree species and size, average basal area, and average percent of peeler logs from the products worksheet (fig. 10),
- 3) Keep the three input data worksheets active on the desktop and quit **WestProPlus** (see section 2),
- 4) Reload **WestProPlus** (see section 2) and go to step 2 to start a new replication.

**WestProPlus** did three simulations in step 2 for the three regimes with the same string of random numbers to compare the regimes efficiently, while steps 3 and 4 generate a new string of random numbers for another replication.

An example of ten replications is in table 1. There was a strong positive effect of q-ratio on the productivity (fig. 16), because more large trees were cut with higher q-ratios. As smaller trees were left on the stand, higher q-ratio leads to significantly lower percentage of peelers, and lower tree size diversity. Here, we have detected little or no effect of q-ratio on the other criteria with only ten replications. More replications with more initial states suggest that as the q-ratio increases, NPV increases, species diversity decreases, and basal area increases (Liang et al. 2005b).



**Table 1—Simulation results of the three BDq selection regimes with different q-ratios**

Replication	NPV (\$/ac)			Productivity (ft <sup>3</sup> /ac/yr)		
	q=1.2	q=1.4	q=1.8	q=1.2	q=1.4	q=1.8
1	14133	19443	32168	69.25	83.12	117.18
2	10375	12551	21600	80.55	99.61	141.09
3	9572	11049	18441	69.77	92.43	141.28
4	9349	11689	20079	71.76	89.23	129.14
5	9710	13045	21939	73.08	92.42	137.2
6	11153	14463	23201	76.51	90.17	128.73
7	20804	29217	50303	73.6	97.06	155.06
8	5917	7337	14764	66.73	85.69	132.58
9	12656	14459	22195	78.26	96.83	136.24
10	17656	20924	33917	71.53	86.81	127.95

	Species diversity			Size diversity		
	q=1.2	q=1.4	q=1.8	q=1.2	q=1.4	q=1.8
1	1.33	1.32	1.33	2.85	2.79	2.43
2	1.33	1.34	1.32	2.85	2.78	2.42
3	1.33	1.34	1.34	2.85	2.77	2.39
4	1.32	1.32	1.32	2.85	2.78	2.42
5	1.32	1.32	1.3	2.86	2.78	2.4
6	1.31	1.33	1.32	2.86	2.79	2.42
7	1.32	1.32	1.31	2.86	2.77	2.39
8	1.32	1.34	1.33	2.85	2.79	2.41
9	1.34	1.35	1.35	2.86	2.78	2.42
10	1.33	1.33	1.33	2.85	2.78	2.4

	Percentage of peeler			Average basal area (ft <sup>2</sup> /ac)		
	q=1.2	q=1.4	q=1.8	q=1.2	q=1.4	q=1.8
1	0.29	0.23	0.17	75.8	79.2	74
2	0.3	0.22	0.17	79.6	88.5	86
3	0.3	0.22	0.16	74.4	86.5	85.4
4	0.31	0.22	0.16	74.3	83.8	79.2
5	0.29	0.22	0.16	77.9	86.2	82.9
6	0.32	0.23	0.16	73.4	81.8	79.4
7	0.29	0.22	0.16	76.5	88.7	91.5
8	0.31	0.22	0.17	73.9	83.4	84.5
9	0.29	0.22	0.16	79.6	87.1	81.3
10	0.3	0.22	0.16	74	81.7	79.2

Note: Except for NPV, all data are averages over 200 years.

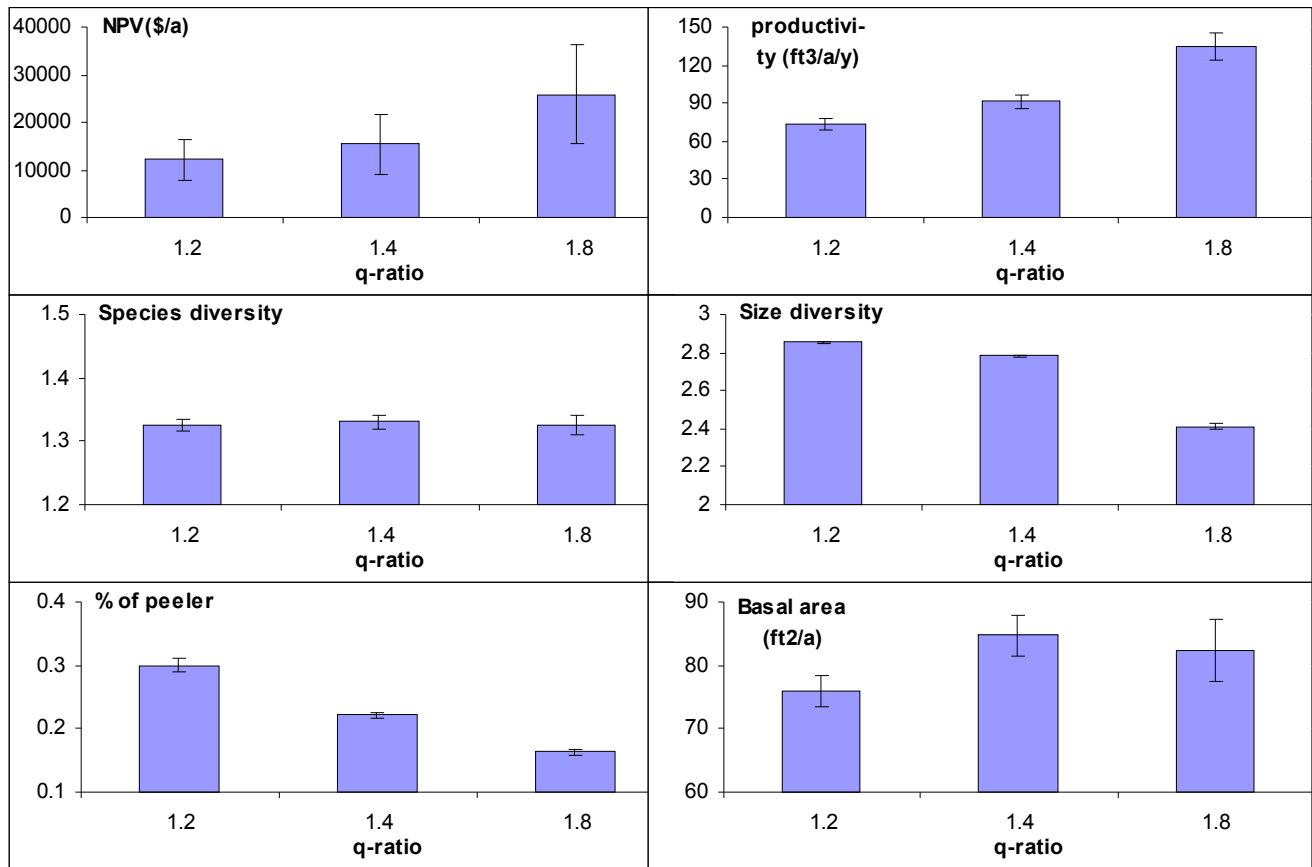


Figure 16—Mean and standard error of the management criteria over 10 replications for different q-ratios, other things being held constant.

## Troubleshooting WestProPlus

*Why can't I open WestProPlus?*

First, make sure you have the latest version of WestProPlus(2005). Check our website:

<http://www.forest.wisc.edu/facstaff/buongiorno/> for updates.

Set your Excel® macro security level to **Medium**. You can change the level at **Tools** → **Macro** → **Security**. After setting the macro security level to **Medium**, each time you load WestProPlus, a security warning message window will pop up, and you should select **Enable Macros** (fig. 17).



Figure 17—Microsoft® Excel® Security Warning Window against Macro viruses.

*WestProPlus does not insert a new input data worksheet. What can I do?*

Before inserting a new input data worksheet, WestProPlus checks to see if there is a worksheet named **Input Data** already open. If there is one, WestProPlus will not generate a new input data worksheet. To get a new input data worksheet, close all Excel® windows and reopen WestProPlus.

*Why is there no BDq calculator in the example worksheets?*

The example workbooks contain only the input data. After you have installed WestProPlus, the BDq calculator icon will appear in the new input data worksheet. At that point, you can copy data from the example workbooks into the input data worksheet.

*Why is the BDq calculator not working?*

WestProPlus must be open to use the BDq calculator. To use the BDq calculator on a previously saved input data worksheet, **WestProPlus** must be in the Excel® menu bar.

*Why can't I copy all the content from the example worksheet to the input data worksheet?*

All the cells of the input data worksheet are protected except those that need entries (marked with ? marks). Copy only the data from the example worksheet and paste them to the corresponding locations in the input data worksheet.

For further assistance, or to send us your comments, please contact us through [jbuongio@wisc.edu](mailto:jbuongio@wisc.edu).

## **Acknowledgments**

We thank Dean Parry, Karen Waddell, and Susan Stevens Hummel for assistance with the data. The research leading to this program was supported, in part, by the USDA Forest Service, Pacific Northwest Research Station, by USDA-CSREES grant 2001-35108-10673, and by the School of Natural Resources, University of Wisconsin-Madison. The authors take sole responsibility for any error or omission.

## Metric Equivalents

When you know:	Multiply by:	To find:
inches (in)	0.3937	centimeters (cm)
feet (ft)	0.3048	meters (m)
square feet (ft <sup>2</sup> )	0.0929	square meters (m <sup>2</sup> )
square feet per acre (ft <sup>2</sup> /ac)	4.3562	square meters per hectare (m <sup>2</sup> /ha)
cubic feet (ft <sup>3</sup> )	35.3147	cubic meters (m <sup>3</sup> )
cubic feet per acre (ft <sup>3</sup> /ac)	14.2913	cubic meters per hectare (m <sup>3</sup> /ha)

## Literature Cited

Barbour, M.G.; Billings, W.D. 1988. North American Terrestrial Vegetation. Cambridge University Press, Cambridge, UK. 421p.

Barbour, R.J.; Kellogg, R.M. 1990. Forest management and end-product quality: a Canadian perspective. *Can. J. For. Res.* 20: 405–414.

Barbour, R.J.; Parry, D.L. 2001. Log and lumber grades as indicators of wood quality in 20- to 100-year-old Douglas-fir trees from thinned and unthinned stands. General Technical Report 510, USDA Forest Service, Pacific Northwest Research Station, Portland. 22 p.

Burns, R.M.; Honkala, B.H. (tech. coords.) 1990. Silvics of North America: 1. Conifers. USDA Agric. Handb. 654. 675 p.

Curtis, R.O.; Carey, A.B. 1996. Managing Economic and Ecological Values in Douglas-Fir Forests. *J. For.* 94: 1-7, 35-37.

Efron, B.; Tibshirani, R.J. 1994. An Introduction to the Bootstrap. CRC Press, Boca Raton, FL. 456 p.

Emmingham, W. 1998. Uneven-aged management in the Pacific Northwest. *J. For.* 96(7): 37-39

Guldin, J.M. 1996. The role of uneven-aged silviculture in the context of ecosystem management. *W. J. Appl. For.* 11(1): 4-12.

Hanson, E.J. ; Azuma, D.L.; Hiserote, B.A. 2002. Site index equations and mean annual increment equations for the Pacific Northwest Research Station Forest Inventory and Analysis, 1985-2001. Res. Note PNW-RN-533. Portland, OR: U.S. Department of Agriculture, Forest Service, Pacific Northwest Research Station. 24 p.

Hansen, A.J.; Spies, T.A.; Swanson, F.J.; Ohmann, J.L. 1991. Conserving biodiversity in managed forests: lessons from natural forests. *BioScience* 41(6): 382-292.

Hiserote, B.; Waddell, K. 2003. The PNW-FIA integrated database user guide. A database of forest inventory information for California, Oregon and Washington, V 1.3. FIA PNW Station, Portland, Oregon. 10 p.

Liang, J.; Buongiorno, J.; Monserud R.A. 2005a. Growth and yield of all-aged Douglas-fir/western hemlock forest stands: a matrix model with stand diversity effects. *Can. J. For. Res.* 35(10): 2369-2382.

Liang, J.; Buongiorno, J.; Monserud R.A. 2005b. Bootstrap simulation and response surface optimization of management regimes for Douglas-fir/western hemlock stands. *For. Sci.* (In review).

Liang, J.; Buongiorno, J.; Monserud R.A. 2004a. CalPro: A spreadsheet program for the management of California mixed-conifer stands. USDA Forest Service, Pacific Northwest Research Station, General Technical Report PNW-GTR-619. 32p.

Liang, J.; Buongiorno, J.; Kolbe, A.; Schulte, B. 2004b. NorthPro: a spreadsheet program for the management of uneven-aged northern hardwood stands. Madison, WI: University of Wisconsin-Madison, Department of Forest Ecology and Management. 36 p.

Miller, M.; Emmingham, B. 2001. Can selection thinning convert even-aged Douglas-fir stands to uneven-aged structures? *Western Journal of Applied Forestry* 16(1): 35-43.

Northwest Log Rules Advisory Group. 1998. Official log scaling and grading rules. 8<sup>th</sup> ed. Eugene, OR. 48 p.

Oregon Department of Forestry. 2005. Quarterly Douglas-fir stumpage prices online: [http:// www. odf. state. or. us](http://www.odf.state.or.us).

Ralston, R.; Buongiorno, J.; Schulte, B.; Fried, J. 2003. WestPro: a computer program for simulating uneven-aged Douglas-fir stand growth and yield in the Pacific Northwest. Gen. Tech. Rep. PNW-GTR-574. Portland, OR: U.S. Department of Agriculture, Forest Service, Pacific Northwest Research Station. 25 p.

Schulte, B.; Buongiorno, J.; Lin, C.R.; Skog, K. 1998. SouthPro: a computer program for managing uneven-aged loblolly pine stands. Gen. Tech. Rep. FPL-GTR-112. Madison, WI: U.S. Department of Agriculture, Forest Service, Forest Products Laboratory. 47 p.



Stevens, J.A.; Barbour, R.J. 2000. Managing the stands of the future based on the lessons of the past: estimating western timber species product recovery by using historical data. USDA For. Serv. Res. Note PNW-RN-528. 9 p.

U.S. Government Printing Office [US GPO]. 2005. Economic report of the President. Washington, DC. 335 p.

## Appendix 1—WestProPlus Plot Data

The data to calibrate the stand growth model used by WestProPlus came from the PNW-FIA Integrated Database (Version 1.2) (Hiserote and Waddell, 2003), specifically, the part of the database that combines information from four different forest inventories (FIAEO, FIAWO, FIAEW, FIAWW) conducted by the USDA Forest Service between 1988 and 2000.

The 2,706 plots used in calibrating WestProPlus had all been classified in the Douglas-fir/western hemlock forest type, they had been measured at two successive inventories, and they were located in Oregon and Washington west of 120° in longitude (fig. 18). This area includes the Coast Range and the Cascades Range of western Washington and Oregon, as well as the Klamath region of southwestern Oregon. About 80% of the plots were on private land, and most of the remaining 20% were on lands belonging to the States of Oregon or Washington (table 2). U.S. Federal lands (e.g., National Forests, National Parks, and Bureau of Land Management forests) are not included in this database.

The trees were categorized into four species classes (table 3): Douglas-fir, other shade-intolerant species, western hemlock, and other shade-tolerant species (Barbour and Billings 1988). Red alder (*Alnus rubra*) and ponderosa pine (*Pinus ponderosa*) were the most abundant shade-intolerant species other than Douglas-fir. Western redcedar (*Thuja plicata*) and bigleaf maple (*Acer macrophyllum*) were the most abundant shade-tolerant species other than western hemlock (table 3). Within each species, trees were grouped into nineteen 2 in. diameter classes, from 3 to 5 in. up to 40 in. and above.

The plot characteristics are summarized in table 4. The theoretical maximum species diversity is  $\ln(4)=1.39$ , and the maximum size diversity is  $\ln(19)=2.94$ , occurring when all the basal area is equally distributed in all 4 species classes and 19 size classes, respectively. There was a 0.90 correlation between the diversity by species group, used here, and the diversity by individual species. The average recruitment was highest for Douglas-fir and other shade-intolerant trees (table 4).

The individual tree data (table 5) show that, on average, Douglas-fir trees had the highest diameter growth rate, and lowest mortality rate. Other shade-tolerant species had the highest single tree gross volume. Although the time between measurements was short, averaging a decade, there was much difference in trees and stand conditions between plots. It is this cross-sectional variation that allows inferring how stands would grow in very different conditions that might arise in space and over long time periods.

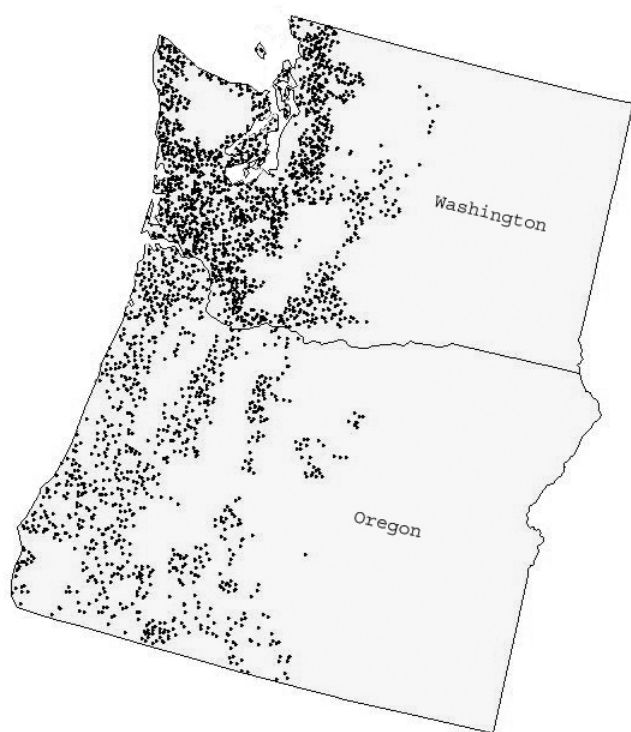


Figure 18—Geographic distribution of the FIA plots used to calibrate the growth and yield model.

**Table 2—Distribution of plots by ownership**

Ownership	Number of plots	%
Private	2136	78.9
Public		
State	438	16.2
Local Government	67	2.5
Other federal owner	29	1.1
Bureau of Land Management	20	0.7
National Park Service	16	0.6
Total	2706	100.0

**Table 3—Frequency of tree species in all sample plots**

Common Name	Scientific Name	%
Douglas-fir	<i>Pseudotsuga menziesii</i>	41.27
Other Shade-intolerant Species		24.07
Red alder	<i>Alnus rubra</i>	10.85
Ponderosa pine	<i>Pinus ponderosa</i>	7.10
Lodgepole pine	<i>Pinus contorta</i>	1.94
Western larch	<i>Larix occidentalis</i>	0.92
Black cottonwood	<i>Populus balsamifera ssp.trichocarpa</i>	0.72
Pacific madrone	<i>Arbutus menziesii</i>	0.63
Incense-cedar	<i>Calocedrus decurrens</i>	0.44
Oregon white oak	<i>Quercus garryana</i>	0.42
Western juniper	<i>Juniperus occidentalis</i>	0.26
Oregon ash	<i>Fraxinus latifolia</i>	0.25
Noble fir	<i>Abies procera</i>	0.18
Quaking aspen	<i>Populus tremuloides</i>	0.15
Western white pine	<i>Pinus monticola</i>	0.14
Sugar pine	<i>Pinus lambertiana</i>	0.05
Jeffrey pine	<i>Pinus jeffreyi</i>	0.01
Western hemlock	<i>Tsuga heterophylla</i>	18.80
Other Shade-tolerant Species		15.86
Western redcedar	<i>Thuja plicata</i>	5.88
Bigleaf maple	<i>Acer macrophyllum</i>	3.09
Grand fir	<i>Abies grandis</i>	2.09
Sitka spruce	<i>Picea sitchensis</i>	1.44
Pacific silver fir	<i>Abies amabilis</i>	1.32
White fir	<i>Abies concolor</i>	0.94
Mountain hemlock	<i>Tsuga mertensiana</i>	0.42
Engelmann spruce	<i>Picea engelmannii</i>	0.34
Subalpine fir	<i>Abies lasiocarpa</i>	0.17
Port-Orford-cedar	<i>Chamaecyparis lawsoniana</i>	0.12
Pacific yew	<i>Taxus brevifolia</i>	0.03
Alaska yellowcedar	<i>Chamaecyparis nootkatensis</i>	0.02
Redwood	<i>Sequoia sempervirens</i>	0.01
All the species		100.00

**Table 4—Summary statistics for plot data**

	Trees/ac				Site Productivity (ft <sup>3</sup> /ac/yr)	Inter inventory (yr)	Basal area (ft <sup>2</sup> /ac)
	Douglas-fir	Other shade intolerant	Western hemlock	Other shade tolerant			
<i>Mean</i>	86.38	62.42	56.79	41.24	149.59	10.53	119.01
<i>S.D.</i>	121.74	105.75	119.63	87.59	72.17	0.90	74.23
<i>Max</i>	1246.45	1982.99	1223.36	1056.16	300.00	23.00	418.66
<i>Min</i>	0.00	0.00	0.00	0.00	10.00	9.00	2.40
<i>n</i>	2706	2706	2706	2706	2706	2706	2706
	Recruitment (tree/ac/yr)				Species diversity	Size diversity	
	Douglas-fir	Other shade intolerant	Western hemlock	Other shade tolerant			
<i>Mean</i>	2.22	1.55	1.34	1.01	0.54	1.65	4733.54
<i>S.D.</i>	7.32	6.35	5.67	4.48	0.39	0.63	3588.06
<i>Max</i>	103.87	165.25	96.76	96.37	1.38	2.76	22122.76
<i>Min</i>	0.00	0.00	0.00	0.00	0.00	0.00	28.15
<i>n</i>	2706	2706	2706	2706	2706	2706	2706

Note: Level variables are at the time of the first inventory, recruitment is between the two inventories.

**Table 5—Summary statistics for individual tree data**

	Douglas-fir	Other shade-intolerant	Western hemlock	Other shade-tolerant
Diameter (in)				
<i>Mean</i>	15.28	12.01	12.97	16.06
<i>S.D.</i>	8.39	6.33	7.69	10.69
<i>Max</i>	81.81	51.42	68.37	119.90
<i>Min</i>	1.57	1.57	1.57	1.57
<i>N</i>	23161	11831	11612	8900
Diameter growth (in/yr)				
<i>Mean</i>	0.28	0.18	0.23	0.23
<i>S.D.</i>	0.17	0.14	0.15	0.17
<i>Max</i>	5.50	6.47	3.77	3.33
<i>Min</i>	0.00	-0.11	0.00	-0.45
<i>n</i>	23161	11831	11612	8900
Mortality Rate ( $y^{-1}$ )				
<i>Mean</i>	0.003	0.006	0.003	0.004
<i>S.D.</i>	0.016	0.023	0.017	0.019
<i>Max</i>	0.111	0.111	0.111	0.111
<i>Min</i>	0.000	0.000	0.000	0.000
<i>n</i>	23838	12650	12007	9295
Volume ( $ft^3$ /tree)				
<i>Mean</i>	77.69	39.55	61.09	83.34
<i>S.D.</i>	99.59	51.91	90.41	154.33
<i>Max</i>	1986.80	790.70	1353.26	5826.92
<i>Min</i>	0.35	0.35	0.35	0.00
<i>n</i>	23161	11831	11612	8900

Note: Diameter and volume are at the time of the first inventory, diameter growth and mortality rate are between the two inventories.

## Appendix 2—Growth-and-Yield Model

The growth model of WestProPlus has the following form (Liang et al., 2005a):

$$\mathbf{y}_{t+1} = \mathbf{G}\mathbf{y}_t + \mathbf{r} + \mathbf{u}_{t+1} \quad (1)$$

where  $\mathbf{y}_t = [y_{ijt}]$  is the number of trees per unit area of species group  $i$ , and diameter class  $j$ , at time  $t$ .  $i=1$  for Douglas fir, 2 for other shade intolerant species, 3 for western hemlock, and 4 for other shade-tolerant species. The matrix  $\mathbf{G}$  and the vector  $\mathbf{r}$  are defined as:

$$\mathbf{G} = \begin{pmatrix} \mathbf{G}_1 & & & \\ & \mathbf{G}_2 & & \\ & & \mathbf{G}_3 & \\ & & & \mathbf{G}_4 \\ & & & & \mathbf{G}_i \end{pmatrix} \quad \begin{pmatrix} a_{i1} & & & \\ b_{i1} & a_{i2} & & \\ & \ddots & \ddots & \\ & & b_{i,17} & a_{i,18} \\ & & & b_{i,18} & a_{i,19} \end{pmatrix}$$

$$\mathbf{r} = \begin{pmatrix} \mathbf{r}_1 & & & r_i \\ \mathbf{r}_2 & & & 0 \\ \mathbf{r}_3 & & \mathbf{r}_i & \vdots \\ \mathbf{r}_4 & & & 0 \end{pmatrix}$$

where  $a_{ij}$  is the probability that a tree of species  $i$  and diameter class  $j$  stays alive and in the same diameter class between  $t$  and  $t+1$ ,  $b_{ij}$  is the probability that a tree of species  $i$  and diameter class  $j$  stays alive and grows into diameter class  $j+1$ , and  $r_i$  is the number of trees of species group  $i$  recruited in the smallest diameter class between  $t$  and  $t+1$ , with a time period of one year. The vector  $\mathbf{u}_{t+1}$  represents the stochastic part of growth.  $\mathbf{u}_{t+1}$  is bootstrapped each year from the set of vector differences between the observed and the deterministically predicted stand state, for each of the 2,706 plots in Oregon and Washington (Liang et al. 2005b). The  $b_{ij}$  probability is equal to the annual tree diameter growth,  $g_{ij}$  (in/yr), divided by the width of the diameter class. Diameter growth is a function of tree diameter  $D_j$  (in), stand basal area  $B$  (ft<sup>2</sup>/ac), site productivity  $Q$  (ft<sup>3</sup>/ac/yr), tree species diversity  $H_s$ , and tree size diversity  $H_d$ .



$$\begin{array}{lcl}
g_{1j} & 0.3094 & 0.0124D_j \quad 0.0001D_j^2 \quad 0.0010B \quad 0.0007Q \quad 0.0259H_s \quad 0.0955H_d \\
g_{2j} & 0.2403 & 0.0038D_j \quad 0.0001D_j^2 \quad 0.0007B \quad 0.0005Q \quad 0.0278H_s \quad 0.0273H_d \\
g_{3j} & 0.3553 & 0.0148D_j \quad 0.0003D_j^2 \quad 0.0010B \quad 0.0002Q \quad 0.0098H_s \quad 0.0689H_d \\
g_{4j} & 0.2304 & 0.0081D_j \quad 0.0001D_j^2 \quad 0.0008B \quad 0.0005Q \quad 0.0506H_s \quad 0.0568H_d
\end{array}$$

The expected recruitment  $r_i$  (trees/ac/yr) of species  $i$  is represented by a Tobit model:

$$r_i = (\beta_i x_i / \sigma_i) \Phi(\beta_i x_i / \sigma_i)$$

with:

$$\begin{array}{lcl}
\beta_1 x_1 & 8.8824 & 0.1211B \quad 0.0971N_1 \quad 0.0227Q \quad 4.5033H_s \quad 2.7500H_d \\
\beta_2 x_2 & 9.5715 & 0.0773B \quad 0.0975N_2 \quad 0.0058Q \quad 3.4070H_s \quad 2.4200H_d \\
\beta_3 x_3 & 12.508 & 0.0872B \quad 0.0926N_3 \quad 0.0190Q \quad 5.9506H_s \quad 4.0100H_d \\
\beta_4 x_4 & 13.987 & 0.0700B \quad 0.0924N_4 \quad 0.0209Q \quad 3.2546H_s \quad 0.9200H_d
\end{array}$$

where  $N_i$  is the number of trees per acre in species group  $i$ ;  $\Phi$  and  $\phi$  are respectively the standard normal cumulative and density functions, and the standard deviations of the residuals are,  $\sigma_1=9.5366$ ,  $\sigma_2=9.0863$ ,  $\sigma_3=11.0664$ ,  $\sigma_4=9.3270$ .

The probability of tree mortality per year,  $m_{ij}$ , is a species-dependent probit function of tree size and stand state:

$$\begin{array}{lcl}
m_1 & \frac{1}{10.5} & ( 2.1103 \quad 0.0905D_j \quad 0.0012D_j^2 \quad 0.0019B \quad 0.0014Q \quad 0.0059H_s \quad 0.5110H_d ) \\
m_2 & \frac{1}{10.5} & ( 1.4063 \quad 0.0519D_j \quad 0.0010D_j^2 \quad 0.0012B \quad 0.0010Q \quad 0.0022H_s \quad 0.1411H_d ) \\
m_3 & \frac{1}{10.5} & ( 3.1746 \quad 0.1057D_j \quad 0.0019D_j^2 \quad 0.0036B \quad 0.0016Q \quad 0.3252H_s \quad 0.4192H_d ) \\
m_4 & \frac{1}{10.5} & ( 1.5188 \quad 0.0236D_j \quad 0.0002D_j^2 \quad 0.0010B \quad 0.0021Q \quad 0.2721H_s \quad 0.3528H_d )
\end{array}$$

The probability that a tree stays alive and in the same size class from  $t$  to  $t+1$  is, then:

$$a_{ij}=1-b_{ij}-m_{ij}$$

The expected single tree volume  $v_{ij}$  (ft<sup>3</sup>) is a species-dependent function of tree and stand

characteristics:

$v_{1j}$	0.01712	$0.00013D_j$	$0.00001D_j^2$	$0.00161B$	$0.01174Q$	$0.00350H_s$	$0.00092H_d$
$v_{2j}$	0.01536	$0.00004D_j$	$0.00000D_j^2$	$0.00054B$	$0.00691Q$	$0.00038H_s$	$0.00100H_d$
$v_{3j}$	0.01294	$0.00016D_j$	$0.00001D_j^2$	$0.00087B$	$0.00416Q$	$0.00185H_s$	$0.00145H_d$
$v_{4j}$	0.00392	$0.00019D_j$	$0.00000D_j^2$	$0.00105B$	$0.00584Q$	$0.00692H_s$	$0.00035H_d$

## Appendix 3—Log Grade Equations

The equation to predict log grade were calibrated with data from 3,378 logs in the USFS Product Recovery Database (Stevens and Barbour 2000). The logs are classified into five grade categories, according to their diameter, branch size, growth rate, and minimum length (Barbour and Parry 2001, Northwest Log Rules Advisory Group 1998). For WestProPlus, the logs were divided into the four species groups recognized by the growth model (App. 2).

In addition to the log grade, the diameter of the logs was known for all species groups. The database also contains information on the stands from which the logs were taken. However, for Douglas-fir and western hemlock, only the tree diameter  $D$  (in) and the site index  $S$  (ft) influenced log grade significantly (Liang et al. 2005b).

The log grade was predicted with a logistic regression and a nominal response variable:

$$\ln \frac{\pi_{ijl}}{\pi_{ijm}} = \beta_{il} + \beta_{ilD} D + \beta_{ilS} S$$

where  $\pi_{ijl}/\pi_{ijm}$  was the ratio between the probability of log grade  $l$  ( $l=1, 2, \dots, m-1$ ), and log grade  $m$ , for species  $i$  and diameter class  $j$ . The parameters,  $\beta_{il}$ , of the log grade equation for Douglas-fir and western hemlock are in table 6. For both species, log grade was higher for larger trees on less productive sites.

There was no data on stand characteristics for other shade-tolerant and shade-intolerant species, and no systematic relation was observed between grade and diameter for these species groups. WestProPlus uses the observed percentages of total volume by log grade for each diameter class, and assumes that they are constant (table 7).

**Table 6—Estimation results of the nominal-logistic equations of log grade**

Dependent variable	Independent variable	Coefficient	SE	P
<b>Douglas-fir</b>				
$\pi_1/\pi_4$	<i>Constant</i>	2.91	1.20	0.02
	<i>D</i>	0.02	0.00	0.00
	<i>S</i>	-0.33	0.10	0.00
$\pi_3/\pi_4$	<i>Constant</i>	1.66	1.43	0.25
	<i>D</i>	0.02	0.00	0.00
	<i>S</i>	-0.33	0.13	0.03
<b>Western hemlock</b>				
$\pi_1/\pi_4$	<i>Constant</i>	-8.94	4.28	0.04
	<i>D</i>	0.16	0.02	0.00
	<i>S</i>	-1.33	0.50	0.03
$\pi_2/\pi_4$	<i>Constant</i>	-8.37	4.04	0.04
	<i>D</i>	0.14	0.02	0.00
	<i>S</i>	-1.00	0.43	0.07
$\pi_3/\pi_4$	<i>Constant</i>	-5.90	1.59	0.00
	<i>D</i>	0.10	0.01	0.00
	<i>S</i>	-0.43	0.13	0.00

$\pi_l$ =probability of log grade *l* (no Douglas-fir log was observed of grade 2, grade 5 was not observed for both species),

*D*=tree diameter,

*S*=site index,

*P* =level at which the effect of the control variable would be just significant.

**Table 7—Percentage of timber volume by log grade (I through V) and size for the shade-intolerant species except Douglas-fir, and the shade-tolerant species except western hemlock.**

<b>Diameter (in)</b>	<b>Other shade-intolerant species (%)</b>					<b>Other shade-tolerant species (%)</b>				
	<b>I</b>	<b>II</b>	<b>III</b>	<b>IV</b>	<b>V</b>	<b>I</b>	<b>II</b>	<b>III</b>	<b>IV</b>	<b>V</b>
4	0	0	0	0	0	0	0	0	0	0
6	0	0	0	0	0	0	30	0	58	12
8	0	0	0	100	0	0	30	0	66	4
10	0	20	0	80	0	0	37	0	61	1
12	0	24	0	76	0	0	35	0	64	1
14	0	23	10	66	0	0	33	12	55	0
16	0	16	59	25	0	0	28	50	20	2
18	0	20	69	7	4	0	36	47	16	1
20	0	16	78	6	0	0	36	48	11	4
22	0	21	79	0	0	0	29	60	9	2
24	0	14	77	4	5	0	37	50	11	2
26	6	27	64	3	0	1	26	66	6	1
28	7	33	58	2	0	1	40	52	6	1
30	19	43	36	2	0	1	32	56	7	4
32	21	43	29	0	7	3	42	50	5	0
34	13	69	13	0	6	0	44	52	4	0
36	0	70	20	0	10	0	44	48	8	0
38	0	40	60	0	0	8	62	31	0	0
40	0	75	25	0	0	0	43	50	0	7

## Appendix 4—Stochastic Stumpage Price and Interest Rate Models

The stumpage price model in WestProPlus (Liang et al. 2005b) was calibrated with quarterly stumpage prices of Douglas-fir grade I logs from 1977 to 2003 in Oregon (Oregon Department of Forestry, 2005). The following autoregressive-moving average model was used to represent quarterly price changes:

$$P_{t+1} = 0.60 P_t + 0.05e_t - e_{t-1} \quad (3)$$

where  $P_t$  and  $P_{t-1}$  were stumpage prices at quarter  $t$  and quarter  $t-1$ , respectively, and  $e_t$  was a white-noise residual error. The parameters were estimated from the data with the Box-Jenkins method. WestProPlus simulates stochastic price series with this model by bootstrapping, i.e., by drawing randomly with replacement at each step  $t$  a pair of shocks  $e_t$  and  $e_{t+1}$  from the residuals obtained by fitting model (3) to the data.

The initial price of Douglas-fir grade I logs is equal to that entered by the user (fig. 1), or lacking this, it is bootstrapped from the prices observed from 1977 to 2003. With bootstrapped initial prices, the mean predicted stumpage prices of Douglas-fir grade I logs and its standard error over 500 replications of 100-year simulations had a slight positive trend over time, but it was not statistically significant.

The price of logs of other grades than grade I is calculated according to the relative prices entered by the user (fig. 1), or lacking this, according to the relative prices in table 8. In either case, the relative prices are constant over time.

The annual rate of return of AAA bonds from 1970 to 2004 (U.S. Government Printing Office, 2005) was used as the interest rate. WestProPlus uses an autoregressive model of interest rates:

$$r_{t+1} = 0.72 + 0.81r_t - r_{t-1} \quad (4)$$

where  $r_t$  was the interest rate at year  $t$ , and  $\epsilon_t$  was the white-noise residual. WestProPlus simulates stochastic interest rates by bootstrapping: at each step  $t$ , a shock was drawn randomly with replacement from the sample of the residuals obtained by fitting the model to the data. With bootstrapped initial interest rate, the mean predicted interest rate over 500 simulations showed no trend over time.

**Table 8—Stumpage prices (\$/ft<sup>3</sup>)<sup>1</sup> in Oregon by log grade and species group in 2005 (Log Lines 2005)**

Log Grade	Douglas-fir	Other Shade-intolerant Species	Western hemlock	Other Shade-tolerant Species
I	9.18	6.60	3.30	7.80
II	5.58	6.48	3.24	7.50
III	5.22	5.28	2.94	7.50
IV	4.68	4.50	2.46	7.50
V	0.60	0.60	0.60	0.78

1) Assumes 0.012 ft<sup>3</sup>/Mbf.

## Appendix 5—Definition of Diversity of Tree Species and Size

WestProPlus uses Shannon's index to measure the stand diversity in terms of tree species (how uniformly trees are distributed across species groups), and timber size classes. WestProPlus measures the presence of trees in a class by their basal area, which gives more weight to larger trees.

The tree species diversity is defined in WestProPlus as:

$$H_{species} = - \sum_{i=1}^m \frac{y_i}{y} \ln \frac{y_i}{y}$$

where  $y_i$  is the basal area of trees of species group  $i$  per acre, and  $y$  is total basal area. In WestProPlus,  $m = 4$  (there are four species groups). The tree species diversity has a maximum value of  $\ln(4) = 1.39$ , when basal area is equally distributed in the four species groups, and a minimum value of zero when all trees are in the same species group.

Similarly, tree size diversity is:

$$H_{size} = - \sum_{j=1}^n \frac{y_j}{y} \ln \frac{y_j}{y}$$

where  $y_j$  is the basal area of trees in diameter class  $j$  per acre. In WestProPlus,  $n = 19$  diameter classes. The tree size diversity has a maximum  $\ln(19) = 2.94$  when basal area is equally distributed in all 19 diameter classes, and a minimum of zero when all trees are the same diameter class.



## Glossary

**BA chart**—A WestProPlus-generated chart showing, for a selected range of years, the per acre basal area of softwoods, hardwoods, and the whole stand.

**BDq distribution**—A tree distribution, by diameter class, defined by a stand basal area (B), a maximum and minimum tree diameter (D), and a q-ratio (q), the ratio of the number of trees in a given diameter class to the number of trees in the next larger class.

**bootstrap method**—When used in stochastic simulations, this technique simulates random variables by sampling randomly (with replacement) from actual observations of the variable, rather than from an assumed distribution. See Efron and Tibshirani 1994 for the details.

**cutting cycle**—The number of years between successive harvests. For two-cut silvicultural systems, this is the number of years between the two harvests.

**diameter class**—One of 19 2-in diameter at breast height (DBH) categories used by WestProPlus to classify trees by size. Diameter classes range from 4 to 40+ inches, with each class denoted by its midpoint diameter. Diameter class 4 is for trees with diameters from 3 to less than 5 inches. The 40+ inch class is for all trees 39 inches in diameter and larger.

**Diversity chart**—A WestProPlus-generated chart showing changes in the Shannon index of species or size diversity over a selected range of years.

**initial stand state**—The number of live trees per acre, by species and size, at the start of a simulation.

**input data worksheet**—A worksheet to enter the data for running a WestProPlus simulation.

**Log grade**—An estimate of the type and quality of lumber recovered when the log is sawed.

**Microsoft® Excel® add-in**—A command, function, or software program that runs within Microsoft® Excel® and adds special capabilities. WestProPlus is an add-in.

**net present value (NPV)**—The net revenue discounted to the present.

**preharvest stand state**—The number of live trees per acre, by species and size, immediately before a harvest.

**Products worksheet**—A WestProPlus output worksheet that shows, for each harvest, the basal area cut, the volume of poles and sawtimber removed by species group, the gross income generated, and the net present value of the harvest, as well as the total net present value of the stand and its mean annual production in terms of basal area cut and volumes harvested, on a per acre basis.

**pole-size trees**—Trees suitable for the production of poletimber but too small to produce saw logs. In WestProPlus, these include trees from 5 to less than 11 inches.

**re-entry costs**—Costs per acre associated with each harvest that are not reflected in the stumpage prices. These may include, e.g., the added expense of marking the stand for single-tree selection or controlling hardwood competition.

**sawtimber**—Trees suitable for the production of saw logs. WestProPlus’s marking guides recognize three classes of sawtimber trees:

- (1) Small sawtimber—Trees with diameters of 11 to less than 15 inches.
- (2) Medium sawtimber—Trees with diameters of 15 to less than 21 inches.
- (3) Large sawtimber—Trees with diameters of 21 inches or larger.

**Setup File worksheet**—A worksheet to store WestProPlus setup files. It is typically hidden.

**Setup Files**—Collections of related input data that are stored together on a Setup File worksheet. Setup Files may contain data for initial stand states, target stand states, cutting cycle parameters, stumpage prices, or fixed costs, and may be used in varying combinations as input for WestProPlus simulations.

**site index**—The average height of a stand’s dominant and codominant trees at age 50 years.

**size diversity**—The diversity of tree diameter classes as measured by the Shannon index. With 19 diameter classes, size diversity reaches its maximum value of 2.94 when the basal area or number of trees is distributed evenly among the diameter classes.

**species diversity**—The diversity of species groups as measured by the Shannon index. With four species classes, species diversity reaches its maximum value of 1.39 when the basal area or number of trees is distributed evenly among the species groups.

**species groups**—The four categories used by WestProPlus to classify trees by species. For a complete list of species, see Liang et al. 2005a.

**Douglas-fir**—*Pseudotsuga menziesii*.

**Other shade-intolerant species**—Including *Alnus rubra*, *Pinus ponderosa*, *Pinus contorta*, etc.

**Western hemlock**—*Tsuga heterophylla*.

**Other shade-tolerant species**—Including *Thuja plicata*, *Acer macrophyllum*, *Abies grandis*, etc.

**stumpage prices**—Prices paid to a landowner for standing timber.

**target stand state**—The desired number of live trees per acre in each species group and diameter class after a harvest.

**total net present value**—The sum of all discounted revenues minus the sum of all discounted costs.

**workbook**—The workbook is the normal document or file type in Microsoft® Excel®. A workbook is the electronic equivalent of a three-ring binder. Inside workbooks you will find sheets, such as worksheets and chart sheets.

**worksheet**—Most of the work you do in Excel® will be on a worksheet. A worksheet is a grid of rows and columns. Each cell is the intersection of a row and a column and has a unique address, or reference.