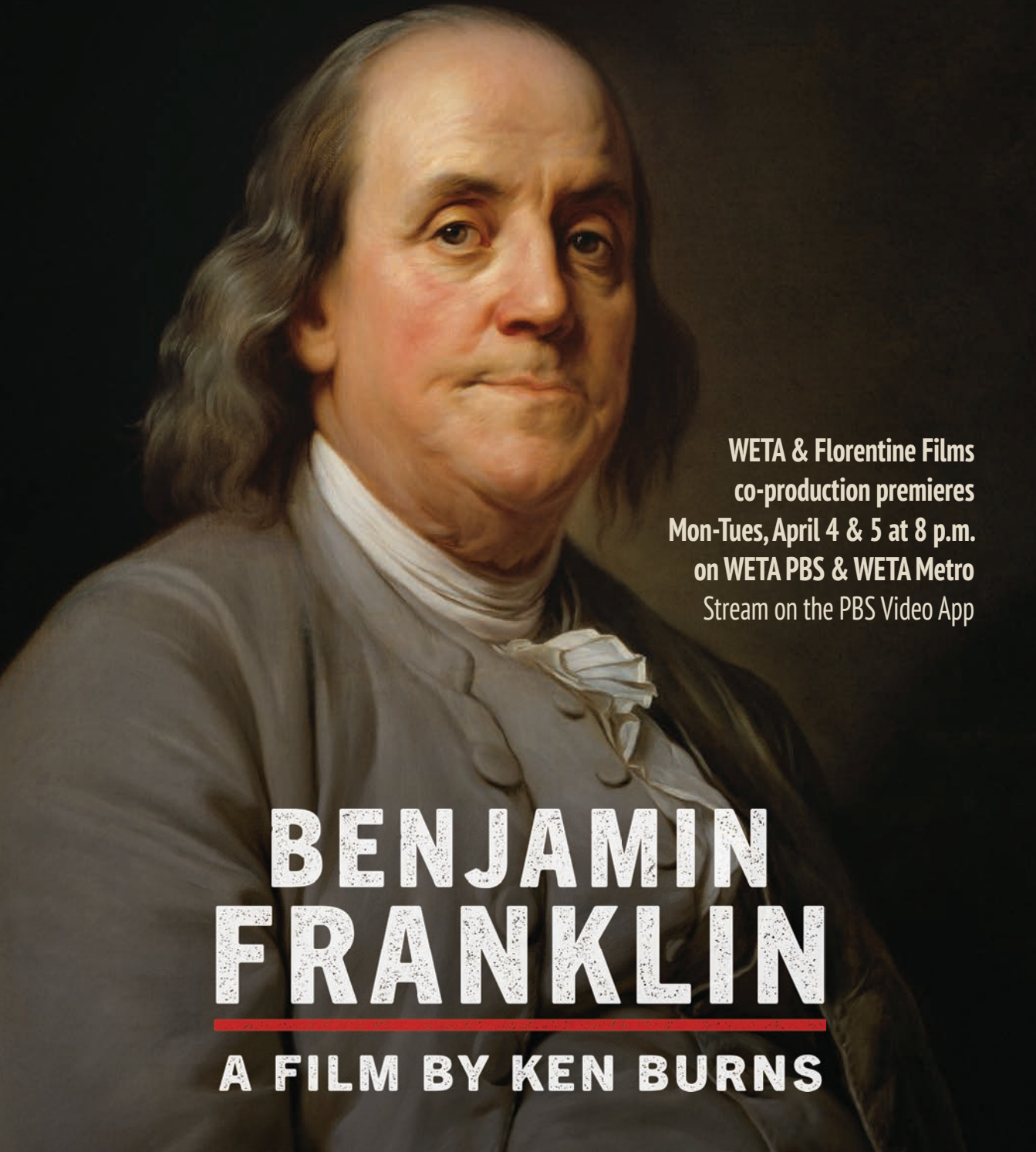


# WETA



APRIL 2022  
MAGAZINE FOR MEMBERS



WETA & Florentine Films  
co-production premieres  
Mon-Tues, April 4 & 5 at 8 p.m.  
on WETA PBS & WETA Metro  
Stream on the PBS Video App

# BENJAMIN FRANKLIN

---

A FILM BY KEN BURNS

*PBS News Weekend* launches with anchor Geoff Bennett  
New WETA restaurant series *Signature Dish* premieres more episodes

# WETA Focus



In April, we are excited to premiere three exceptional WETA television offerings. This month, for a nationwide audience, we roll out the fascinating new film *Benjamin Franklin*, spotlighting one of American history's most interesting figures — who helped establish the United States and contributed to unlocking the mystery of electricity. This new WETA co-production, created in partnership with our friends and collaborators Ken Burns and Dayton Duncan and their colleagues at Florentine Films, explores in depth the extraordinary life, influence and legacy of the writer, printer, scientist and statesman. The film looks beyond the myths surrounding Franklin, examining his significant contradictions.

In our acclaimed news operations, we are very proud to debut the half-hour newscast *PBS News Weekend*, relaunching the weekend news program under NewsHour Productions at WETA with anchor Geoff Bennett, who joined the NewsHour family earlier this year. We invite you to tune in Saturday and Sunday evenings for the informative broadcasts, which capitalize on the resources and reporting of *PBS NewsHour*. Details are opposite this page.

We are excited as well to present more episodes of our engaging new series *Signature Dish*, the new local WETA production that visits restaurants throughout Greater Washington and showcases their signature creations. These explorations of the national capital area's wide variety of cuisines air on Monday nights, illuminating the rich culture and diversity of our vibrant community.

Enjoy these new productions and more in April, and thank you for your support.

*Sharon Percy Rockefeller*

Sharon Percy Rockefeller, President and CEO, WETA

## Finding Your Roots with Henry Louis Gates, Jr., Season 8

**WETA co-production airs Tuesdays, April 12 & 19 at 8 p.m.  
on WETA PBS & WETA Metro; stream on the PBS Video App**

In April, the ancestry series *Finding Your Roots with Henry Louis Gates, Jr.*, a WETA-co-production, presents two episodes that conclude Season 8. The series, written, hosted and executive-produced by Prof. Henry Louis Gates, Jr., a longtime WETA partner and the Alphonse Fletcher University Professor and Director of the Hutchins Center for African & African American Research at Harvard University, illuminates through DNA research and genealogical sleuthing the family origins of trailblazing celebrity guests. This month's program participants are, on April 12, actor and director **Regina King** and filmmaker **Damon Lindelof** and, on April 19, journalist **Erin Burnett**, stage and screen star **Amy Carlson**, and the late fashion icon **André Leon Talley**. *Finding Your Roots* is a production of McGee Media, Inkwell Media, Kunhardt Films and WETA. Learn more at [pbs.org/FindingYourRoots](http://pbs.org/FindingYourRoots) and via [#FindingYourRoots](https://twitter.com/FindingYourRoots).

Corporate support for *Finding Your Roots with Henry Louis Gates, Jr.*, Season Eight is provided by Ancestry and Johnson & Johnson. Support is also provided by Ford Foundation, Gordon and Betty Moore Foundation, The Carnegie Corporation of New York, and by The Inkwell Society and its members Candace King Weir; Lloyd Carney Foundation; Jim and Susan Swartz; Sheryl Sandberg and Tom Berthal; Anne Wojcicki; Hayward and Kathy Draper; and Nicole Commissiong and Darnell Armstrong. Major support is provided by the Corporation for Public Broadcasting.



COURTESY MCGEE MEDIA

Program participant Regina King

## WETA — ON THE AIR & ONLINE

### WETA PBS

26.1 via antenna  
Comcast 26, 219, 800, 1026  
Cox 26, 1003, 1026  
DirecTV 26, 26-1, Stream  
Dish 8076 Fios 26, 526  
RCN 26, 613

### WETA UK

26.2 via antenna  
Comcast 265, 1146  
Cox 800  
Fios 474  
RCN 39, 602

### WETA PBS Kids

26.3 via antenna  
Comcast 266, 1147  
Cox 801  
Fios 472  
RCN 38

### WETA World

26.4 via antenna  
Comcast 270, 1148  
Cox 802  
Fios 475  
RCN 37



Geoff Bennett anchors PBS News Weekend starting April 2

MIKE MORGAN/PBS NEWSHOUR

# WETA Launches PBS News Weekend

WETA production airs Saturdays and Sundays at 6 p.m. on WETA PBS; stream on the PBS Video App or at [pbs.org/newshour](https://pbs.org/newshour)

This month, on April 2, WETA launches *PBS News Weekend*, a half-hour newscast airing Saturday and Sunday nights at 6 p.m., with news and feature stories presented by anchor Geoff Bennett. The weekend public affairs program, formerly produced by WNET New York, is now created in the WETA television studio in Shirlington, Virginia, under the auspices of NewsHour Productions. *PBS News Weekend* will feature broad news coverage and deep reporting, leveraging WETA news operation *PBS NewsHour*'s production and editorial resources.



Bennett, the *PBS News Weekend* anchor, joined the *PBS NewsHour* reporting team — led by Anchor and Managing Editor Judy Woodruff — in January as Chief Washington Correspondent. He is formerly a White House correspondent, reporting on that beat under three presidents for news organizations including NBC and NPR, and he has covered five presidential elections.

“The mission of delivering fair, compelling and in-depth journalism is as important today as ever,” Bennett said. “It’s what the *NewsHour* does best, and I’m excited to expand the broadcast’s ambition and reach to seven days a week via the weekend newscasts under the new management of WETA’s NewsHour Productions. I’m equally honored and humbled to anchor the launch of *PBS News Weekend* as we build on the broadcast’s excellent legacy.”

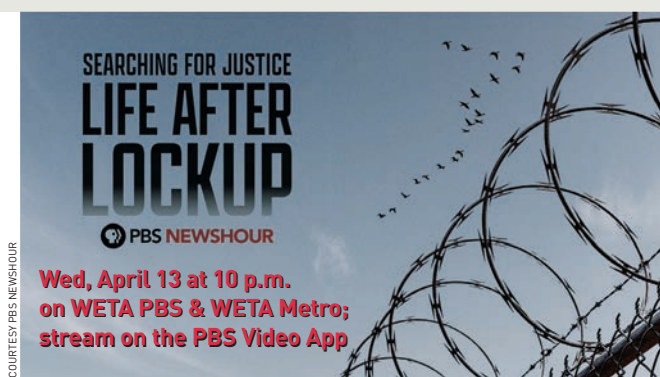
The relaunched weekend broadcasts are headed by executive producer Rachel Wellford, an eight-year veteran *NewsHour* producer who in February rejoined the staff from CNN+. “The *NewsHour* and PBS have always had an extremely engaged, smart and loyal audience. I am excited to be part of producing the same high-quality journalism on the weekend that our viewers have come to rely on and trust,” said Wellford.

Tune in to *PBS News Weekend* Saturdays and Sundays at 6 p.m. on WETA PBS.

Major corporate funding is provided by BDO, BNSF, Consumer Cellular, Fidelity, Johnson & Johnson, and Raymond James, with additional support from the Carnegie Corporation of New York, the Ford Foundation, the Gordon and Betty Moore Foundation, the John D. and Catherine T. MacArthur Foundation, The Kendeda Fund, the John S. and James L. Knight Foundation, the Andrew W. Mellon Foundation, the National Science Foundation, The Pew Charitable Trusts, the Skoll Foundation, the Walton Family Foundation, the William and Flora Hewlett Foundation, Friends of the NewsHour, and others.

An April *PBS NewsHour* primetime documentary focuses on the challenges people who have spent years behind bars encounter after release, from reconnecting with family, to finding work and housing, to staying out of prison or jail. *Searching for Justice: Life After Lockup* follows the struggles and successes of four formerly incarcerated individuals as they navigate their return to society. The hour-long special is hosted by *PBS NewsHour*'s Chief Correspondent Amna Nawaz.

Among those spotlighted are: Michael Plummer (of Washington, D.C.), jailed at age 17 for murder and, given a second chance, freed after 23 years; Rachel Schuyler, incarcerated for two counts of forgery and then released; Michael Cevallos, in and out of prison for 28 years on a variety of charges and released in 2020; and Renee Wyatt, who turned her life around in the 1990s after years of addiction and incarceration and became a social worker helping others.



COURTESY PBS NEWSHOUR

SEARCHING FOR JUSTICE  
**LIFE AFTER LOCKUP**

**PBS NEWSHOUR**

Wed, April 13 at 10 p.m.  
on WETA PBS & WETA Metro;  
stream on the PBS Video App

For program and membership inquiries, visit [weta.org](https://weta.org) or call 703-998-2724.

### WETA Metro

26.5 via antenna  
[weta.org/livestream](https://weta.org/livestream)  
PBS Video App  
YouTube TV  
Fios 470  
RCN 599

### WETA Online

[weta.org](https://weta.org)  
[weta.org/passport](https://weta.org/passport)  
[weta.org/pbsapp](https://weta.org/pbsapp)  
[weta.org/learningmedia](https://weta.org/learningmedia)

### WETA Classical

WETA 90.9 FM Washington, D.C.  
WGMS 89.1 FM Hagerstown  
[wetaclassical.org](https://wetaclassical.org)  
[vivalavoce.org](https://vivalavoce.org)  
WETA Classical App

# BENJAMIN FRANKLIN

A FILM BY KEN BURNS

**WETA and Florentine Films co-production  
airs Mon-Tues, April 4 & 5 at 8 p.m.  
on WETA PBS & WETA Metro,  
repeating each night at 10 p.m.,  
stream on the PBS Video App**

**A** new documentary film from Ken Burns and WETA explores the life and work of Benjamin Franklin, one of the most consequential and compelling figures in United States history, and whose work and words unlocked the mystery of electricity and helped to create the United States. The story of this fascinating, iconic American — a prolific writer and publisher, groundbreaking scientist and inventor, a revolutionary and world-renowned diplomat, and signer of both the Declaration of Independence and the United States Constitution — reveals his remarkable life and contributions while scrutinizing his contradictions.

The four-hour film *Benjamin Franklin*, the latest in the 37-year film collaboration between WETA and Florentine Films, airs over two consecutive nights, April 4-5. The in-depth exploration of Franklin was directed and executive-produced by Burns, written by Dayton Duncan (*Country Music*, *The National Parks*) and produced by David Schmidt (*The Vietnam War*) and Burns. Buddy Squires was lead cinematographer.

The actor Mandy Patinkin provides the voice of Franklin, capturing the sense of humor and curiosity for life that Franklin presented in his many writings. Additional voices were provided by Carolyn McCormick, Josh Lucas, Paul Giamatti, Liam Neeson, Joe Morton and Adam Arkin. The film is narrated by Peter Coyote.

## An Extraordinary Life

Franklin's life has been celebrated as a quintessential American story, but he was anything but typical. His 84 years (1706-1790) spanned nearly the entirety of the 18th century, an epoch of revolutionary change in science, technology, literature, politics and government — change that Franklin himself helped to advance. He launched the first public library in America, organized a volunteer fire company, and founded an academy that eventually became the University of Pennsylvania. His annual

publication, *Poor Richard's Almanack*, set a model for future humorists such as Mark Twain and contained maxims that are still part of our shared lexicon. And his famous experiments with electricity led to one of his most important inventions — the lightning rod.

**“Our new Constitution is now established, everything seems to promise it will be durable; but, in this world, nothing is certain except death and taxes.”**

—Benjamin Franklin

## Beyond the Myth, a Complex Man

While Franklin was committed to the ideals of the Enlightenment — always looking to improve himself, his community, and humanity at large — he was a complex figure. He could be whimsical yet philosophical, folksy yet unforgiving, generous yet shrewdly calculating, and broadminded yet deeply prejudiced. Critically, especially for a man so associated with independence and individual liberty, Franklin enslaved people, advertised the sale of enslaved people, published notices of runaways in his newspaper, and championed the expansion of white settlements onto Indigenous land. He became an abolitionist very late in life.

BY JEAN-BAPTISTE GREUZE, DIPLOMATIC RECEPTION ROOMS, U.S. DEPT. OF STATE



Franklin, 1777

LIBRARY OF CONGRESS





Ambassador to the French Court



Peace negotiator with Britain



Young Franklin at the press

“Benjamin Franklin was a fascinating and complicated individual who helped shape our contemporary world,” said Ken Burns. “If we see him for more than his long list of accomplishments, we recognize an imperfect man challenging himself and his contemporaries as he tries to understand and improve the world around him. One of the best and most prolific writers of the 18th century, Franklin both embodies and documents the dynamic social, scientific and political changes of this revolutionary age. His story is one of hope, with a faith in the common man. But his shortcomings are also a reminder of this country’s failure to address slavery at the time of its founding and the racial divisions that continue to impact our country today.”

“Every American learns about Benjamin Franklin in grade school, but often it ends there,” said David Schmidt, the film’s producer. “He is too interesting, too complicated and too important a figure not to revisit. We have tried to present Franklin as a real person who lived a real life, separated from the myths that have followed him through time.”

### A Team of Distinguished Experts

*Benjamin Franklin* includes interviews with some of the country’s leading scholars of early American history, many of them advisors to the project, including Franklin biographer Walter Isaacson, who also served as a senior advisor, as well as the late Bernard Bailyn (Harvard), H.W. Brands (Texas-Austin), Christopher Leslie Brown (Columbia), Joyce Chaplin (Harvard), Ellen R. Cohn (Yale), Philip Dray (New School), Erica Armstrong

Dunbar (Rutgers), Joseph J. Ellis (Mt. Holyoke), Clay Jenkinson, William E. Leuchtenburg (UNC), Stacy Schiff, Sheila L. Skemp (Mississippi), and Gordon S. Wood (Brown). Jean M. O’Brien, Page Talbot and Karin Wulf were also project advisors.

### Additional Resources

WETA and PBS have collaborated to build a substantial collection of classroom resources about Benjamin Franklin for educators in grades 5-12; materials are now available via PBS LearningMedia. WETA is also coordinating community engagement projects nationwide surrounding the film’s content. Join the conversation via [#BenFranklinPBS](https://twitter.com/BenFranklinPBS), and learn more about the film and Franklin — and view video discussions of his endeavors as a writer, innovator, diplomat and revolutionary — at [pbs.org/benfranklin](https://pbs.org/benfranklin).

*Benjamin Franklin* also airs on WETA PBS, April 9, 7 p.m.; on WETA Metro, Thursdays, April 14 & 21 at 8 p.m.; and on WETA World, Fridays, April 8 & 15 at 8 p.m.

Corporate funding for *Benjamin Franklin* was provided by Bank of America. Major funding was provided by David M. Rubenstein. Major funding was also provided by The Pew Charitable Trusts, the Corporation for Public Broadcasting, and by The Better Angels Society and its members Jeannie and Jonathan Lavine; University of Pennsylvania; Gilchrist and Amy Berg; Perry and Donna Golkin; Kissick Family Foundation; Deborah and Jon Dawson; Diane and Hal Brierley; McCloskey Family Charitable Trust; Cappy and Janie McGarr; Lavender Butterfly Fund; Susan and Charles Shanor Charitable Trust; and The Susan Liautaud Foundation. Support for the local broadcast of *Benjamin Franklin* is provided by Second Story Books.



**New WETA production airs Mondays, April 11, 18 & 25 at 9 p.m. on WETA PBS and 8 p.m. on WETA Metro; repeats Sundays on WETA PBS; streams on the PBS Video App and [weta.org](http://weta.org)**

**S**potlighting the Washington area's culinary delights, the engaging new WETA production *Signature Dish* discovers and reveals the standout dishes at a wide array of the region's best restaurants, from the latest dining hot spots to strip-mall eateries serving up authentic global cuisines.

In each program, series host Seth Tillman visits three restaurants to meet the proprietors and chefs to learn about their signature dishes — and to share the origin stories of the dishes, from immigrant traditions to beloved family recipes. He explores delicious meals that provide a flavorful view into the area's vibrant restaurant landscape.

Tillman, a producer at WETA, is a D.C.-area native who has a passion for great food, and a broad knowledge of the local dining scene and gourmand's appreciation for its diverse culinary offerings.

The series premiered on March 28 with *Episode 1: Cooking with Fire*. WETA presents new *Signature Dish* episodes on Mondays (except April 4) through early May. As new episodes of *Signature Dish* roll out, they repeat on Sunday nights at 7:30 p.m. on WETA PBS. Stay tuned for more food explorations on *Signature Dish*, as new programs are slated to premiere this fall.



## Stream *If You Lived Here* on the PBS Video App or via [weta.org](http://weta.org)

**T**he popular WETA production *If You Lived Here* may have wrapped up its second season, but episodes are still available to enjoy anytime via streaming video. Enjoy 10 *Season 1* and 14 *Season 2* installments of the informative and entertaining local house-hunting and neighborhood exploration series. Catch the episodes you missed, or watch them anew, to learn about all the homes and communities visited by series hosts John Begeny and Christine Louise (at left with realtor Tammy Drummond in Bowie). *If You Lived Here* spotlights a wide array of places and properties throughout Greater Washington while celebrating each area's history, culture, notable landmarks and flavor. Follow along as John and Christine explore the D.C. Metro region one neighborhood at a time.

Support for *If You Lived Here* is provided by The Yuen Foundation.

# WETA PBS & WETA Metro



Clockwise: Host Seth Tillman with Sanjay Mandhaiya at Pappe; Kuya Ja's Lechon Belly; goat curry at Pappe; restaurateur Jocelyn Law-Yone

## Signature Dish in April

### April 11: Southeast Asian Specialties

While the flavors of Thai and Vietnamese cuisine are familiar to Washington-area diners, other unique cuisines of Southeast Asia are gaining popularity. Series host Seth Tillman samples three dishes that represent these new trends: *ohno khauk swe* (coconut curry chicken noodle soup) at **Thamee** in Northeast DC; lechon belly at **Kuya Ja's Lechon Belly** in Kensington, MD; and fish head curry at **Malaysian Kopitiam** in Centreville, VA.

### April 18: Caribbean Favorites

Series host Seth Tillman samples the diverse array of flavors in the District from Jamaica, Puerto Rico, and Trinidad and Tobago, learning about the melting pot that is Caribbean cuisine. Signature dishes are Jamaican *jerk chicken wings* at **Andrene's Caribbean & Soul Food** in Brightwood; *chuleta kan kan*, a fried pork chop at **La Famosa** in the Navy Yard; and *curried beef roti* at **Cane** on H Street, NE.

### April 25: Masters of Spice

Meet three chefs who are masters of using hot peppers and balancing the intense heat with incredible flavors. Series host Seth Tillman samples *muu som*, a stir-fried rice-fermented sour pork dish at **Thip Khao** in Columbia Heights, DC; *jungle laal maas*, a spicy goat curry at **Pappe** in Logan Circle; and a whole steamed fish with fermented peppers and scallions at **Q by Peter Chang** in Bethesda, MD.

## Signature Dish Virtual Event! Wednesday, April 27 at 7 p.m.

Attend a WETA virtual discussion with Seth Tillman, host of WETA's new local production, *Signature Dish*, and guests from the D.C. area's restaurant landscape! Registration is free at [weta.org/signaturedishevent](http://weta.org/signaturedishevent).

## WETA Arts

WETA production airs Monday, April 11 at 9:30 p.m. on WETA PBS, 8:30 p.m. on WETA Metro; stream on the PBS Video App

Explore the power, fun and beauty of words with WETA Arts host Felicia Curry and Ann Friedman, the founder and CEO of Planet Word, in the April episode of the WETA production. In the program, spotlighting arts and culture in the Washington area, also meet Julia Kwon, who uses ancient Korean quilt-making tradition to unpack her own Asian American identity. And get a taste of *Grace*, a new musical by D.C.'s own Nolan Williams, Jr., celebrating African American food, family and tradition.

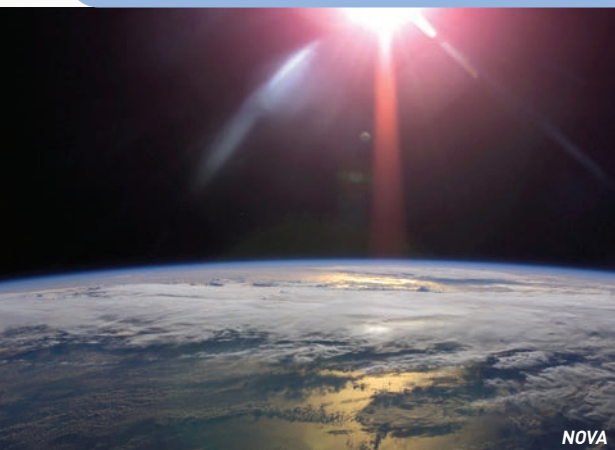
This month's WETA Arts program repeats Monday, April 25 at 9:30 p.m. on WETA PBS and 8:30 p.m. on WETA Metro. Stream the program on the PBS Video App or [weta.org](http://weta.org), where previous episodes are available for viewing as well.



DUHON PHOTOGRAPHY

Ann Friedman

# WETA TV Highlights



NOVA  
WBH

## Earth Day Special Programming

on WETA PBS & WETA Metro;  
stream on the PBS Video App

In celebration of Earth Day 2022, Friday, April 22, WETA presents special programs spotlighting climate change, the environment, earth science and more. Among them are the new two-hour special *Changing Planet*, which monitors seven iconic locations around the globe; and the drama *The Trick*, which depicts a 2009 “fake news” attack on climate science. Programs on WETA PBS and WETA Metro include:

Wed 4/13, 8pm • *Nature: American Arctic*

Wed 4/20, 8pm • *Changing Planet*

Wed 4/20, 10pm • *Earth Emergency*

Fri 4/22, 10pm • *The Trick* (drama)

Wed 4/27, 9pm • *NOVA: Can We Cool the Planet?*

Wed 4/27, 10pm • *Climate Change—The Facts*

(with Sir David Attenborough)

The WETA World channel also presents a wide slate of Earth Day-themed offerings. Visit [weta.org/schedule](http://weta.org/schedule).

## Call the Midwife and More on Sunday Nights

on WETA PBS & WETA Metro; stream on the PBS Video App

WETA's lineup of stellar Sunday dramas continues throughout April as more new episodes of the following air on WETA PBS and WETA Metro: at 8 p.m., popular period drama *Call the Midwife, Series 11*; at 9 p.m., Jane Austen-based costume drama *Sanditon, Series 2 on Masterpiece*; and at 10 p.m., the British crime thriller *Before We Die*. The new seasons of *Sanditon* and *Before We Die* wrap up April 24, while *Call the Midwife* extends into May. For more superb drama, tune in to the WETA UK channel. Among its offerings are encore presentations of *Call the Midwife, Season 8*, Sundays at 4 p.m. starting April 10.



COURTESY NEALS STREET PRODUCTIONS

Call the Midwife

## Rise of the Nazis: Series 2: Dictators at War

Tuesdays, April 12, 19 & 26 at 9 p.m. on WETA PBS &  
WETA Metro; stream on the PBS Video App

A new season of the history miniseries *Rise of the Nazis* explores how Adolf Hitler's fascist regime imploded. In the programs, as Germany wages war and ultimately faces defeat, resistance builds while Hitler pushes his country to destruction. Episodes are *Barbarossa* (April 12); *Stalingrad* (April 19) and *The Home Front* (April 26). Melding dramatic reconstruction with archival footage and interviews with historians, the new episodes follow on Series 1 (2020), which

explored how Hitler and the Nazis rose to power and overturned Germany's liberal democracy. Series 2 programs stream on the PBS Video App; to catch up on Series 1, stream episodes with WETA Passport.

**Also this month:** On Fridays at 9 p.m. on WETA PBS and WETA Metro, the *Great Performances* series *Now Hear This* returns with new episodes spotlighting American composers inspired by their cultural heritage. Violinist and conductor Scott Yoo uncovers musical influences of featured composers Amy Beach (April 8); Florence Price (April 15); Aaron Copland (April 22) and others (April 29). The programs stream on the PBS Video App.



# Stream with WETA Passport



Stream your favorite shows with WETA Passport, a member benefit that offers access to a vast library of superb programs available for streaming on demand. To learn how to access programming with WETA Passport, visit [weta.org/passport/FAQ](http://weta.org/passport/FAQ).

**Annika, Series 1 on Masterpiece** • Nicola Walker (*Unforgotten*, *Last Tango in Halifax*) stars as Annika Strandhed, the dry-witted, speedboat-driving skipper of Glasgow's newly formed Marine Homicide Unit. In the suspenseful new six-part police drama, she must juggle baffling cases and a rebellious teenage daughter. Walker is joined by Jamie Sives (*Guilt*) as DS Michael McAndrews, Annika's colleague; Katie Leung (*Roadkill*) as DC Blair Ferguson, the forensic brains behind the unit; and Ukweli Roach (*Grantchester*) as DS Tyrone Clarke, the new cop at the station. The series, which will air on WETA this fall, is available as a special binge-viewing streaming opportunity with WETA Passport as of **April 17**.



**Luna & Sophie, Series 1 & 2** • A light crime drama from curated international program series *Walter's Choice* spotlights two German police detectives and polar opposites, Luna Kunath and Sophie Pohlmann, working together as partners in Potsdam, Berlin's picturesque little sister. Luna, single and strong-willed, has a strong sense of empathy; she thinks quickly on her feet, but her penchant for naiveté gets her into trouble. Sophie, married and mother to a young son, seems more mature, but her desire for harmony and fairness can be her weakness. The two best friends work on a team probing crimes around the city. The drama, in German with English subtitles, is available for streaming with WETA Passport as of **March 31**.



**Persuasion** • Sally Hawkins and Rupert Penry-Jones star in this 2007 adaptation of Jane Austen's final completed novel. In the storyline, at the age of 19, Anne Elliot fell deeply in love with handsome young naval officer Frederick Wentworth. But with neither fortune nor rank to recommend him, Anne's family opposed the match and "persuaded" her to break off the engagement. Now 27, having never stopped loving Wentworth, she regrets her decision. When Wentworth returns, having made his fortune and reputation, she can only watch as eligible young women fall at his feet. Has he forgotten her? And can he forgive her for listening to her family instead of her heart? *Persuasion* is available for streaming with WETA Passport as of **April 1**.



## Call the Midwife, Season 11

With WETA Passport, stream the series' next Season 11 episode a week *ahead* of broadcast.



## Sanditon, Series 2 on Masterpiece

With WETA Passport, stream the series' next Season 2 episode a week *ahead* of broadcast.

# Primetime

WETA PBS in April



Visit [weta.org/schedule](http://weta.org/schedule) for the most up-to-date schedule information.

■ Denotes WETA productions, co-productions and presentations

	8:00	8:30	9:00	9:30	10:00	10:30
<b>1</b> Fri	Washington Week	History with David Rubenstein, Season 3	Great Performances at the Met: <i>Fire Shut Up in My Bones</i> (to 12m)			
<b>2</b> Sat	American Masters: How It Feels to Be Free				Prince Among Slaves	
<b>3</b> Sun	Call the Midwife, Series 11 (Pt 3 of 8)		<i>Sanditon, Series 2</i> on Masterpiece (Pt 3 of 6)		Before We Die (Pt 3 of 6)	
<b>4</b> Mon	Benjamin Franklin (Pt 1 of 2. <i>Join or Die</i> ) (1706-1774)				Benjamin Franklin (Pt 1 Encore) (to 12m)	
<b>5</b> Tue	Benjamin Franklin (Pt 2 of 2. <i>An American</i> ) (1775-1790)				Benjamin Franklin (Pt 2 Encore) (to 12m)	
<b>6</b> Wed	Nature: Hippo King		NOVA: Determined: Fighting Alzheimer's		Expedition with Steve Backshall: Unpacked ( <i>Behind the Scenes</i> )	
<b>7</b> Thu	Midsomer Murders, Series 20 (Ep 6 of 12. <i>Drawing Dead, Pt 2</i> )		The Bletchley Circle, Series 1 (Pt 3 of 3)		The Fall, Series 1 (Pt 3 of 5)	
<b>8</b> Fri	Washington Week	History with David Rubenstein, Season 3	Great Performances: Now Hear This: Amy Beach: American Romantic		Chamber Music Society Returns: Setting the Stage	
<b>9</b> Sat	(from 7pm:) Benjamin Franklin (Pt 1 of 2. <i>Join or Die</i> ) (1706-1774)			Benjamin Franklin (Pt 2 of 2. <i>An American</i> ) (1775-1790) (to 12m)		
<b>10</b> Sun	Call the Midwife, Series 11 (Pt 4 of 8)		<i>Sanditon, Series 2</i> on Masterpiece (Pt 4 of 6)		Before We Die (Pt 4 of 6)	
<b>11</b> Mon	Antiques Roadshow: Grounds for Sculpture, Hour 1		Signature Dish, Episode 2	WETA Arts	Independent Lens: Jim Allison: Breakthrough (to 11:30pm)	
<b>12</b> Tue	Finding Your Roots w/ Henry Louis Gates, Jr., Season 8 ( <i>Watchmen</i> )		Rise of the Nazis, Series 2: Dictators at War (Pt 1 of 3. <i>Barbarossa</i> )		Frontline: Putin's Road to War	
<b>13</b> Wed	Nature: American Arctic		NOVA: The Cannabis Question		Searching for Justice: Life After Lockup	
<b>14</b> Thu	Midsomer Murders, Series 20 (Ep 7 of 12. <i>The Lions of Causton, Pt 1</i> )		The Bletchley Circle, Series 2 (Ep 1 of 4. <i>Blood on Their Hands, Pt 1</i> )		The Fall, Series 1 (Pt 4 of 5)	
<b>15</b> Fri	Washington Week	History with David Rubenstein, Season 3	Great Performances: Now Hear This: Florence Price and the Great Migration		Chamber Music Society Returns: Bringing Down the House	
<b>16</b> Sat	Last Days of Jesus				Inside the Vatican (to 12m)	
<b>17</b> Sun	Call the Midwife, Series 11 (Pt 5 of 8)		<i>Sanditon, Series 2</i> on Masterpiece (Pt 5 of 6)		Before We Die (Pt 5 of 6)	
<b>18</b> Mon	Antiques Roadshow: Natural Wonders		Signature Dish, Episode 3	Antiques Roadshow Recut	POV: On the Divide (to 11:30pm)	
<b>19</b> Tue	Finding Your Roots w/ Henry Louis Gates, Jr., Season 8 ( <i>Where Did We Come From?</i> )		Rise of the Nazis, Series 2: Dictators at War (Pt 2 of 3. <i>Stalingrad</i> )		Frontline: The Power of Big Oil (Pt 1 of 2) (to 11:30pm)	
<b>20</b> Wed	Changing Planet				Earth Emergency	
<b>21</b> Thu	Midsomer Murders, Series 20 (Ep 8 of 12. <i>The Lions of Causton, Pt 2</i> )		The Bletchley Circle, Series 2 (Ep 2 of 4. <i>Blood on Their Hands, Pt 2</i> )		The Fall, Series 1 (Pt 5 of 5)	
<b>22</b> Fri	Washington Week	History with David Rubenstein, Season 3	Great Performances: Now Hear This: Aaron Copland: Dean of American Music		The Trick (to 11:30pm)	
<b>23</b> Sat	The Vote: American Experience (Pts 1-4 of 4) (to 12m)					
<b>24</b> Sun	Call the Midwife, Series 11 (Pt 6 of 8)		<i>Sanditon, Series 2</i> on Masterpiece (Pt 6 of 6)		Before We Die (Pt 6 of 6)	
<b>25</b> Mon	Antiques Roadshow: Grounds for Sculpture, Hour 2		Signature Dish, Episode 4	WETA Arts	Independent Lens: Aware: Glimpses of Consciousness (to 11:30pm)	
<b>26</b> Tue	We Remember: Songs of Survivors		Rise of the Nazis, Series 2: Dictators at War (Pt 3 of 3. <i>The Home Front</i> )		Frontline: The Power of Big Oil (Pt 2 of 2)	
<b>27</b> Wed	Nature: Portugal: Wild Land on the Edge		NOVA: Can We Cool the Planet?		Climate Change—The Facts	
<b>28</b> Thu	Midsomer Murders, Series 20 (Ep 9 of 12. <i>Till Death Do Us Part, Pt 1</i> )		The Bletchley Circle, Series 2 (Ep 3 of 4. <i>Uncustomed Goods, Pt 1</i> )		The Fall, Series 2 (Pt 1 of 6)	
<b>29</b> Fri	Washington Week	History with David Rubenstein, Season 3	Great Performances: Now Hear This: New American Voices		International Jazz Day 2022	
<b>30</b> Sat	American Masters: Keith Haring: Street Art Boy		American Masters: Lennon NYC			

PBS NewsHour airs weeknights at 7 p.m.  
PBS News Weekend airs Sat/Sun, 6 p.m.

Amanpour and Company airs late weeknights (check listings).

# TV Listings

WETA PBS in April

# WETA



Listings are accurate as of press time. For late-breaking program updates, visit [weta.org/tv](http://weta.org/tv) or call 703-998-2724.

WETA PBS is devoted to children's educational programming 8 a.m.–3 p.m., Monday–Friday. For 24 hours of children's programming each day, tune in to the WETA PBS Kids channel. See page 15 for information.

## Program Key

**Blue type** — WETA productions, co-productions and presentations.

**R** — Repeats that aired within the month.



COURTESY THE METROPOLITAN OPERA

**Friday, April 1 at 9 p.m. on WETA PBS & WETA Metro**

*Great Performances at the Met: Fire Shut Up in My Bones* presents Terence Blanchard's adaptation of Charles M. Blow's memoir, the Met's first performance of an opera by a Black composer. Featuring a libretto by filmmaker Kasi Lemmons, the opera tells the story of a young man's journey to overcome a life of trauma and hardship. Above: Baritone Will Liverman stars alongside soprano Angel Blue.

## 1 Friday

### WEEKDAYS IN APRIL:

**6AM NHK NEWSLINE**

**6:30AM BBC WORLD NEWS**

**7AM (Mondays:) PBS NEWS WEEKEND**

**7:30 (Mondays:) WASHINGTON WEEK — R**

**7AM (Tuesdays-Saturdays:) PBS NEWSHOUR — R**

**8AM-3PM WETA KIDS PROGRAMMING**

**5PM AMANPOUR AND COMPANY** — Rpt of previous night

**6PM BBC WORLD NEWS** — *BBC World News Outside Source* (6pm, Mon-Thur); *BBC World News Today* (6pm, Fri)

**6:30 BBC WORLD NEWS AMERICA**

**7:00 PBS NEWSHOUR** — Each weeknight, the WETA production provides in-depth analysis of current events with a news summary, live interviews and discussions of domestic and international issues. Judy Woodruff anchors. Visit [pbs.org/newshour](http://pbs.org/newshour). **Rpts next day, 7am**

**8:00 WASHINGTON WEEK** — WETA's weekly production, moderated by Yamiche Alcindor, presents a roundtable discussion with award-winning journalists who provide reporting and analysis of the major news stories from the nation's capital. Visit [pbs.org/washingtonweek](http://pbs.org/washingtonweek). **Repeats Sat 4/2, 6am, 6:30pm; Mon 4/4, 7:30am**

**8:30 HISTORY WITH DAVID RUBENSTEIN, SEASON 3** — Episode 10 of 10. Jonathan Alter. **Repeats Sun 4/3, 6:30pm**

**9:00 GREAT PERFORMANCES AT THE MET: FIRE SHUT UP IN MY BONES** — Experience Grammy-winning composer Terence Blanchard and librettist Kasi Lemmon's adaptation of Charles M. Blow's memoir. James Robinson and Camille A. Brown co-direct with Brown choreographing. Baritone Will Liverman stars with soprano Angel Blue. **Repeats Sun 4/3, 2pm**

**12M AMANPOUR AND COMPANY** — Capping primetime programming each weeknight, Christiane Amanpour leads conversations with global thought leaders on contemporary issues. **Repeats next weekday, 5pm**

## 2 Saturday

**6AM WASHINGTON WEEK — R**

**6:30 FIRING LINE WITH MARGARET HOOVER — R**

**7AM PBS NEWSHOUR — R**

**8AM JOSEPH ROSENDO'S TRAVELSCOPE**

**8:30 RICK STEVES' EUROPE**

**9AM ANTIQUES ROADSHOW** — Repeat of Monday 8 p.m.

**10AM THIS OLD HOUSE**

**10:30 ASK THIS OLD HOUSE**

**11AM JOANNE WEIR'S PLATES AND PLACES**

**11:30 KEVIN BELTON'S COOKIN' LOUISIANA**

**12N YAN CAN COOK: SPICE KINGDOM**

**12:30 CHRISTOPHER KIMBALL'S MILK STREET TELEVISION**

**1:00 NICK STELLINO: STORYTELLER**

**1:30 LIDIA'S KITCHEN**

**2:00 IN JULIA'S KITCHEN WITH MASTER CHEFS**

**2:30 SARA'S WEEKNIGHT MEALS**

**3:00 JOANNE WEIR'S PLATES AND PLACES**

**3:30 NEW SCANDINAVIAN COOKING**

**4:00 COOK'S COUNTRY FROM AMERICA'S TEST KITCHEN**

**4:30 AMERICA'S TEST KITCHEN FROM COOK'S ILLUSTRATED**

**5:00 PATI'S MEXICAN TABLE**

**5:30 SAMANTHA BROWN'S PLACES TO LOVE**

**6:00 PBS NEWS WEEKEND** — Anchored by Geoff Bennett, the WETA production presents the day's national and international news and features original field reporting on topics including education, healthcare, the economy, energy, science and technology, religion, finance and the arts.

**6:30 WASHINGTON WEEK — R**

**7:00 FINDING YOUR ROOTS WITH HENRY LOUIS GATES, JR.**

— *Encore Episode: Off the Farm. R*

**8:00 AMERICAN MASTERS: HOW IT FEELS TO BE FREE** — Explore the lives and trailblazing careers of iconic African American entertainers Lena Horne, Abbey Lincoln, Nina Simone, Diahann Carroll, Cicely Tyson and Pam Grier, who changed American culture through their films, fashion, music and politics. **Repeats 12m; Sun 4/3, 11pm**

**10:00 PRINCE AMONG SLAVES** — A film relates the forgotten true story of an African prince who was enslaved in Mississippi for 40 years before finally achieving freedom and becoming one of the most famous men in America.

**11:00 FINDING YOUR ROOTS WITH HENRY LOUIS GATES, JR.** — *Encore Episode: Off the Farm. R*

**12M AMERICAN MASTERS: HOW IT FEELS TO BE FREE — R**

## 3 Sunday

**6AM-9AM WETA KIDS PROGRAMMING**

**9AM WHITE HOUSE CHRONICLE**



COURTESY AMERICAN PUBLIC TELEVISION

**Sunday, April 3 at 7 p.m. on WETA PBS**

*Secrets of Sacred Architecture* spotlights the elements of design and meaning that are embedded in religious architecture. Among the locations visited is the Washington National Cathedral (above).



**Wednesday, April 6 at 8 p.m. on WETA PBS & WETA Metro**  
*Nature: Hippo King* follows the life of an old hippo, a king of his kind, and explores the true character of one of Earth's largest land mammals. Above: A dominant hippo bull patrols his beach.

- 9:30 **TO THE CONTRARY WITH BONNIE ERBE**
- 10AM **THIS IS AMERICA AND THE WORLD WITH DENNIS WHOLEY**
- 10:30 **THE OPEN MIND**
- 11AM **FIRING LINE WITH MARGARET HOOVER** — Repeats Saturdays, 6:30am
- 11:30 **GREAT PERFORMANCES AT THE MET: BORIS GODUNOV** — Experience bass René Pape portraying the tortured tsar caught between ambition and paranoia in this production by Stephen Wadsworth. Conductor Sebastian Weigle leads Mussorgsky's masterwork in its original 1869 version. Met Opera soprano Angel Blue hosts.
- 2:00 **GREAT PERFORMANCES AT THE MET: FIRE SHUT UP IN MY BONES** — R
- 5:00 **THE CHAVIS CHRONICLES** — A talk show hosted by award-winning journalist, civil rights icon, and intellectual influencer Dr. Benjamin F. Chavis, Jr. features interviews with thought leaders.
- 5:30 **A SEAT AT THE TABLE** — A talk show series featuring hosts Denene Millner, Monica Pearson and Christine White gives voice to African American women from their diverse experiences, perspectives and challenges.
- 6:00 **PBS NEWS WEEKEND** — Geoff Bennett anchors the WETA production. See the April 2, 6 p.m. listing. Repeats Monday, 7am
- 6:30 **HISTORY WITH DAVID RUBENSTEIN, SEASON 3** — Episode 10 of 10. Jonathan Alter. R
- 7:00 **SECRETS OF SACRED ARCHITECTURE** — Sacred buildings represent many of America's greatest feats of innovative engineering and artistic design. This program unlocks the design elements that make these innovative structures so fascinating and unveils the meaning embedded in religious architecture — from churches to synagogues to mosques to temples. LeVar Burton narrates. Repeats 1am
- 8:00 **CALL THE MIDWIFE, SERIES 11** — Part 3 of 8. Violet must balance her professional and personal views to tackle the issue of meths drinkers. Nurse Crane treats a promising young singer who must decide between two very different futures. Trixie and Matthew's friendship blossoms into something deeper.
- 9:00 **SANDITON, SERIES 2 ON MASTERPIECE** — Part 3 of 6. Charlotte and Alexander Colbourne reach an understanding, and she and Col. Lennox enjoy a close encounter at the Midsummer Fair. Alison is falling for her new beau Captain Carter, unaware he's wooing her under false pretenses. Clara calls on Esther for help.
- 10:00 **BEFORE WE DIE** — (UK version) Part 3 of 6. Stefan tells Davor that Christian is supplying information about the Mimica family's criminal activities to the police. Will Christian's cover story convince Davor? Or will he be forced to take more drastic action to protect himself?
- 11:00 **AMERICAN MASTERS: HOW IT FEELS TO BE FREE** — R

## 4 Monday

- 7:00 **PBS NEWSHOUR** — Weeknights. Visit [pbs.org/newshour](https://pbs.org/newshour). Repeats next day, 7am

- 8:00 **BENJAMIN FRANKLIN** — In a WETA co-production directed by Ken Burns, follow the colorful and consequential life of the scientist, inventor, writer of enduring epigrams and homespun wisdom, creator of America's first subscription library and one of its most prestigious universities, who may have been the nation's most complex and compelling Founding Father — and its wittiest. Part 1 of 2. *Join or Die (1706-1774)*. After building a printing empire in Philadelphia with his wife Deborah, Benjamin Franklin gains worldwide fame from electricity experiments, then spends years in London trying to keep Britain and America together as his family comes apart. Repeats 10pm; Sat 4/9, 7pm
- 10:00 **BENJAMIN FRANKLIN** — Part 1 of 2. *Join or Die (1706-1774)*. Encore. R

## 5 Tuesday

- 8:00 **BENJAMIN FRANKLIN** — The WETA co-production, a film by Ken Burns, continues. Part 2 of 2. *An American (1775-1790)*. In wartime Philadelphia, Benjamin Franklin helps Thomas Jefferson craft the Declaration of Independence. In Paris, he wins French support for the American Revolution. Back home, he works on the Constitution of the new United States. Repeats 10pm; Sat 4/9, 9:30pm
- 10:00 **BENJAMIN FRANKLIN** — Part 2 of 2. *An American (1775-1790)*. Encore. R

## 6 Wednesday

- 8:00 **NATURE: HIPPO KING** — Follow the life of an old hippo, a king of his kind, and discover the true character of one of Earth's largest land mammals.
- 9:00 **NOVA: DETERMINED: FIGHTING ALZHEIMER'S** — Follow three women at risk of developing Alzheimer's as they join a groundbreaking study to try to prevent the disease — sharing their ups and downs, watching for symptoms, and hoping they can make a difference.
- 10:00 **EXPEDITION WITH STEVE BACKSHALL: UNPACKED** — Enjoy behind-the-scenes footage from the series *Expedition* and the drama of Steve Backshall's 10 world-first expeditions. *Behind the Scenes*. See what made filming five expeditions possible.

## 7 Thursday

- 8:00 **MIDSOMER MURDERS, SERIES 20** — Episode 6 of 12. *Drawing Dead, Part 2*. Carver Valley's seventh comic festival is in full swing when the village is shocked by the murder of a former supermodel. A scathing comic magazine targeting villagers is the only lead. Jemma Redgrave (*Grantchester*) guest stars.
- 9:00 **THE BLETCHLEY CIRCLE, SERIES 1** — Part 3 of 3. Susan tells the other women that she came face to face with the killer — and he let her go. The killer becomes obsessed with Susan; planting false clues, the murderer leads her into a trap.
- 10:00 **THE FALL, SERIES 1** — Part 3 of 5. *Insolence & Wine*. Gibson builds her team, asks Ferrington to be her chief lieutenant, and begins profiling the killer with her team.



**Wednesday, April 6 at 9 p.m. on WETA PBS & WETA Metro**  
*NOVA: Determined: Fighting Alzheimer's* follows three women at risk of developing Alzheimer's as they join a groundbreaking study to try to prevent the disease — sharing their ups and downs, anxiously watching for symptoms, and hoping they can make a difference.



#### Thursdays at 8 p.m. on WETA PBS

New Season 20 episodes of mystery drama *Midsomer Murders*, starring Neil Dudgeon and Nick Hendrix, air on WETA's Thriller Thursdays. *The Bletchley Circle* and *The Fall* continue on Thursdays as well.

Gibson is questioned about her time with James Olson. Meanwhile, Paul's wife Sally Ann, unaware of her husband's secret, becomes concerned about her daughter, who is having nightmares.

## 8 Friday

**8:00 WASHINGTON WEEK** — Repeats Sat 4/2, 6am, 6:30pm; Mon 4/11, 7:30am

**8:30 HISTORY WITH DAVID RUBENSTEIN, SEASON 3** — In this WETA presentation, Washington, D.C.-based financier and philanthropist David Rubenstein interviews scholars and authors to spotlight the wide breadth of the American story. *Episode 1 of 10. Brenda Child. Repeats Sun 4/10, 6:30pm*

**9:00 GREAT PERFORMANCES: NOW HEAR THIS: AMY BEACH: AMERICAN ROMANTIC** — Join violinist Scott Yoo and his wife, flutist Alice Dade, as they investigate the work and life of one of America's greatest Romantic composers, along with her European counterparts, by performing her work and exploring where she spent her early life. *Repeats Sun 4/10, noon*

**10:00 CHAMBER MUSIC SOCIETY RETURNS: SETTING THE STAGE** — Artists and staff of the Chamber Music Society of Lincoln Center band together in preparation for the return to their home venue, proving that the trials of mounting a concert during a pandemic are outweighed by the rewards of live music. *Repeats Sun 4/10, 1pm*

## 9 Saturday

6AM-6PM See the Saturday, April 2 listings.

**6:00 PBS NEWS WEEKEND** — Geoff Bennett anchors.

**6:30 WASHINGTON WEEK** — R

**7:00 BENJAMIN FRANKLIN** — Part 1 of 2. *Join or Die (1706-1774). R*

**9:30 BENJAMIN FRANKLIN** — Part 2 of 2. *An American (1775-1790). R*

## 10 Sunday

6AM-11:30AM See the Sunday, April 3 listings.

**11:30 TO DINE FOR WITH KATE SULLIVAN**

**12N GREAT PERFORMANCES: NOW HEAR THIS: AMY BEACH: AMERICAN ROMANTIC** — R

**1:00 CHAMBER MUSIC SOCIETY RETURNS: SETTING THE STAGE** — R

**2:00 LA FRONTERA WITH PATI JINICH** — In this WETA presentation, savor the sights, sounds and flavors of the U.S.-Mexico border alongside acclaimed James Beard Award-winning chef Pati Jinich as she experiences the region's culture, people and cuisine. *Part 1 of 2. Miles from Nowhere. Jinich travels from El Paso and Juarez to Big Bend National Park. She discovers the people, places and food — from burritos to Middle Eastern cuisine — that make this region unique. Repeats tonight, 11pm*

**3:00 LA FRONTERA WITH PATI JINICH** — Part 2 of 2. *From Dos Laredos to Mars. Jinich travels the borderlands from Laredo and Nuevo Laredo to Brownsville, Texas. She*

learns how tight-knit family bonds are an underlying theme connecting everything throughout La Frontera.

*Repeats tonight, midnight*

**4:00 BENJAMIN FRANKLIN AND AMERICAN DIPLOMACY—A KEN BURNS PUBLIC DIALOGUE INITIATIVE AT GEORGETOWN UNIVERSITY** — WETA presents a February conversation about Benjamin Franklin and American diplomacy between filmmaker Ken Burns, former Secretary of State Condoleezza Rice, and Nicholas Burns, the newly appointed U.S. Ambassador to the People's Republic of China. *PBS NewsHour's Judy Woodruff is the discussion moderator.*

**5:00 THE CHAVIS CHRONICLES**

**5:30 A SEAT AT THE TABLE**

**6:00 PBS NEWS WEEKEND** — Geoff Bennett anchors.

*Repeats Monday, 7am*

**6:30 HISTORY WITH DAVID RUBENSTEIN, SEASON 3** — *Episode 1 of 10. Brenda Child. R*

**7:00 TELL ME MORE WITH KELLY CORRIGAN, SERIES 3** — In a new season of this WETA co-production, *New York Times* bestselling author Kelly Corrigan conducts more interviews with influential people, exploring her guests' humanity and passions. *Episode 1 of 10. Anna Deavere Smith, Actress and Playwright. Repeats 1am*

**7:30 SIGNATURE DISH** — A WETA production spotlights standout dishes at restaurants around the national capital area. *Episode 1. Cooking with Fire.* The world's oldest culinary technique, cooking over an open flame, is on vivid display as host Seth Tillman meets three masters of fire who char, roast and smoke their way to unforgettable eats. Signature dishes: Wagyu beef brisket at **2Fifty Texas BBQ** in Riverdale Park, MD; "The Hot Mess" white pizza at **Frankly...Pizza!** in Kensington, MD; and an iconic spiced lamb shoulder at **Maydan** in Northwest DC. *Repeats 1:30am*

**8:00 CALL THE MIDWIFE, SERIES 11** — *Part 4 of 8.* A heat-wave descends over Poplar and Sister Monica Joan struggles. An angel comes in the form of Fred, who has a sneaky plan. While Cyril continues to search for a new job, Lucille comes to terms with unexpected news.

**9:00 SANDITON, SERIES 2 ON MASTERPIECE** — *Part 4 of 6.* Tension mounts for Charlotte when Colbourne and Colonel Lennox reunite at Lady Denham's annual Garden Party. Georgiana learns a vital piece of information about her inheritance, and Alison's much-desired proposal nearly ends in tragedy.

**10:00 BEFORE WE DIE** — (UK version) *Part 4 of 6.* Bianca figures out what has really happened to Stefan and makes a proposal to Christian. Hopelessly entangled in the police investigation, Christian opts instead to go with Davor to learn about Operation Krajina.

**11:00 LA FRONTERA WITH PATI JINICH** — *Part 1 of 2. Miles from Nowhere. R*

**12M LA FRONTERA WITH PATI JINICH** — *Part 2 of 2. From Dos Laredos to Mars. R*

## 11 Monday

**7:00 PBS NEWSHOUR** — Weeknights. Visit [pbs.org/newshour](http://pbs.org/newshour). *Repeats next day, 7am*

**8:00 ANTIQUES ROADSHOW: GROUNDS FOR SCULPTURE, HOUR 1** — *Roadshow* reveals remarkable appraisals at New Jersey's Grounds for Sculpture, including an \$80,000-\$120,000 find.



A WETA CO-PRODUCTION

Sundays at 7 p.m. starting April 10 on WETA PBS & WETA Metro  
*Tell Me More with Kelly Corrigan*, a WETA co-production, returns with new Season 3 episodes featuring deep and spirited conversations with celebrity guests about their values, beliefs and core relationships.

**9:00 SIGNATURE DISH** — A new WETA production spotlights standout dishes at restaurants around the national capital area. **Episode 2: Southeast Asian Specialties.** Host Seth Tillman tastes three dishes that represent new trends in Southeast Asian food: *ohno khauk swe* (coconut curry chicken noodle soup) at **Thamee** in Northeast DC; lechon belly at **Kuya Ja's Lechon Belly** in Kensington, MD; and fish head curry at **Malaysian Kopitiam** in Centreville, VA. **Repeats Sun 4/17, 7:30pm, 1:30am**

**9:30 WETA ARTS** — In the April episode of WETA's production spotlighting arts and culture in Greater Washington, explore the power, fun and beauty of words with host Felicia Curry and Ann Friedman, the founder and CEO of Planet Word. Meet Julia Kwon, who uses ancient Korean quilt-making tradition to unpack her own Asian American identity. And get a taste of *Grace*, a new musical by D.C.'s own Nolan Williams, Jr., celebrating African American food, family and tradition. **Repeats Mon 4/25, 9:30pm**

**10:00 INDEPENDENT LENS: JIM ALLISON: BREAKTHROUGH** — In an encore presentation of this documentary, a visionary doctor bucks skepticism from the medical field, discovering a new way to use the immune system to help defeat cancer. (90 min.)

## 12 Tuesday

**8:00 FINDING YOUR ROOTS WITH HENRY LOUIS GATES, JR., SEASON 8** — In this WETA co-production, join Harvard scholar Henry Louis Gates, Jr., as he delves into the genealogy of famous Americans. *Episode 9 of 10. Watchmen.* Gates guides Regina King and Damon Lindelof, the creative forces behind a visionary television series, as they discover that they have more in common than meets the eye. **Repeats Sat 4/16, 7pm, midnight**

**9:00 RISE OF THE NAZIS, SERIES 2: DICTATORS AT WAR** — A new season of the miniseries explores the story of Adolf Hitler and his regime. Facing defeat on the Eastern Front, resistance builds as Hitler pushes Germany to untold destruction. *Part 1 of 3. Barbarossa.* The battles on the Eastern Front, a campaign that saw some of the most brutal and inhumane warfare in all of history, are viewed by many as the defining conflict of the Second World War. **Repeats Sun 4/24, 2pm**

**10:00 FRONTLINE: PUTIN'S ROAD TO WAR** — *Frontline* presents the story of what led to Vladimir Putin's war on Ukraine, spotlighting the events that shaped the Russian leader, the grievances that drive him, and how a growing conflict with the West exploded into war in Europe.

## 13 Wednesday

**8:00 NATURE: AMERICAN ARCTIC** — The Arctic National Wildlife Refuge has long protected survivors of the Ice Age, but this once remote and frozen fortress is on the brink of change. Now, for the caribou, musk oxen, polar bears, and Arctic foxes, the ice age is slipping away. **Repeats Sun 4/17, 4pm**



**FINDING YOUR ROOTS  
WITH HENRY LOUIS GATES, JR.  
A WETA CO-PRODUCTION**

**Tuesdays, April 12 & 19 at 8 p.m. on WETA PBS & WETA Metro**  
WETA airs more episodes of *Finding Your Roots*, Season 8, featuring explorations of celebrity genealogies with Henry Louis Gates, Jr., above with the late fashion icon André Leon Talley (April 19).



**SIGNATURE DISH  
A WETA PRODUCTION**

**Mon., April 11, 18 & 25, 9 p.m., WETA PBS; 8 p.m., WETA Metro**

The new WETA production *Signature Dish* explores standout meals at restaurants around the national capital area with host Seth Tillman. Above: The proprietors at Bethesda's Q by Peter Chang (April 25).

**9:00 NOVA: THE CANNABIS QUESTION** — As state-legalized cannabis spreads, *NOVA* investigates scientific evidence for its potential benefits and risks, and how criminalization has especially harmed communities of color.

**10:00 SEARCHING FOR JUSTICE: LIFE AFTER LOCKUP** — In this *PBS NewsHour* documentary, follow four individuals and the challenges they face as they navigate their return to society after incarceration — from reconnecting with family, to finding work and housing, to staying out of prison or jail. The special is hosted by *PBS NewsHour's* chief correspondent Amna Nawaz.

## 14 Thursday

**8:00 MIDSOMER MURDERS, SERIES 20** — DCI John Barnaby and his junior partner DS Jamie Winter investigate murders in the English countryside. *Episode 7 of 12. The Lions of Causton, Pt 1.* A death at Stubbington Hall Sports Club, home to Causton Lions rugby team, brings Barnaby and Winter to investigate a muddle of rucks, old grudges and new romances. Continues April 21.

**9:00 THE BLETCHLEY CIRCLE, SERIES 2** — Four women, former codebreakers, use their skills to solve crimes in post-World War II London. *Blood on Their Hands. Part 1 of 2.* Alice Merren is in prison awaiting trial for the murder of a former Bletchley Park colleague. Jean, believing Alice is covering for someone, reunites the circle to help establish Alice's innocence. The investigation leads to documents suggesting a military cover-up. Continues April 21.

**10:00 THE FALL, SERIES 1** — *Part 4 of 5. My Adventurous Song.* The probe into DS Olson's death drags Stella deeper into Internal Affairs investigations. A woman tells Gibson that a man named Peter nearly strangled her while she was at university, nine years before. Spector's professional relationship with Liz Tyler is questioned and he speeds up his next attack. Meanwhile, his daughter may prove to be his downfall.

## 15 Friday

**8:00 WASHINGTON WEEK** — **Repeats Sat 4/16, 6am, 6:30pm; Mon 4/18, 7:30am**

**8:30 HISTORY WITH DAVID RUBENSTEIN, SEASON 3** — *Episode 2 of 10. Walter Isaacson.* **Repeats Sun 4/17, 6:30pm**

**9:00 GREAT PERFORMANCES: NOW HEAR THIS: FLORENCE PRICE AND THE GREAT MIGRATION** — Follow the trail of one of America's first recognized Black female composers and piano virtuosos from Little Rock to Chicago to learn how West African music and European hymns inspired nearly all of American popular music. **Repeats Sun 4/17, noon**

**10:00 CHAMBER MUSIC SOCIETY RETURNS: BRINGING DOWN THE HOUSE** — The Chamber Music Society of Lincoln Center continues its new season with a host of pandemic-related challenges, including reuniting wind players, sending a large group of artists on tour, and returning home to New York amidst a COVID resurgence. **Repeats Sun 4/17, 1pm**

## 16 Saturday

6AM-6PM See the Saturday, April 2 listings.

- 6:00 **PBS NEWS WEEKEND** — Geoff Bennett anchors.  
 6:30 **WASHINGTON WEEK** — R  
 7:00 **FINDING YOUR ROOTS WITH HENRY LOUIS GATES, JR., SEASON 8** — Episode 9 of 10. *Watchmen*. Repeats midnight  
 8:00 **LAST DAYS OF JESUS** — The key moments in Jesus' life have been immortalized in films, music and works of art. However, some historians have begun to question inconsistencies in the Gospels' version of events. They believe that the Gospels could hide a very different story; one that casts the historical Jesus in a new light. Explore how political events in Rome could have played a crucial role in shaping Jesus' destiny. Repeats 1am  
 10:00 **INSIDE THE VATICAN** — In this reprised 2020 program, go inside the daily lives of those who live and work in the Vatican. From the Pope to the gardener to the head of security, the film gives rare behind-the-scenes access to the inner workings of the city-state. Repeats Sun 4/17, 11pm

## 17 Sunday

6AM-12N See the Sunday, April 3 listings.

- 12N **GREAT PERFORMANCES: NOW HEAR THIS: FLORENCE PRICE AND THE GREAT MIGRATION** — R  
 1:00 **CHAMBER MUSIC SOCIETY RETURNS: BRINGING DOWN THE HOUSE** — R  
 2:00 **MARY BERRY'S EASTER FEAST** — Britain's favorite cook shares her favorite Easter recipes and explores how Christian communities all over the world celebrate Easter with special food. Episode 1 of 2. Mary shares her recipes for hot cross buns, simnel cake and roast lamb — and discovers the diverse traditions followed by British families and communities during Lent and Good Friday.  
 3:00 **MARY BERRY'S EASTER FEAST** — Episode 2 of 2. In the second part of this gastronomic adventure discovering how Britain eats its way through Easter, Mary explores the foods that bring each different community together on Easter Sunday.  
 4:00 **NATURE: AMERICAN ARCTIC** — R  
 5:00 **THE CHAVIS CHRONICLES**  
 5:30 **A SEAT AT THE TABLE**  
 6:00 **PBS NEWS WEEKEND** — Geoff Bennett anchors. Repeats Monday, 7am  
 6:30 **HISTORY WITH DAVID RUBENSTEIN, SEASON 3** — Episode 2 of 10. *Walter Isaacson*. R  
 7:00 **TELL ME MORE WITH KELLY CORRIGAN, SERIES 3** — In a new season of this WETA co-production, *New York Times* bestselling author Kelly Corrigan conducts more interviews with influential people, exploring her guests' humanity and passions. Episode 2 of 10. *Richard Lui, Journalist*. Repeats 1am  
 7:30 **SIGNATURE DISH** — Episode 2: *Southeast Asian Specialties*. R  
 8:00 **CALL THE MIDWIFE, SERIES 11** — Part 5 of 8. Trixie has been assigned to a complicated case. Sister Hilda is called to the primary school, and she asks Nancy and Sister Frances for help. Nurse Crane receives news that will take her on an adventure.



FLORIAN SCHULZ/TOM CAMPION FOUND./TERRA MATER FACTUAL STUDIOS

Wednesday, April 13 at 8 p.m. on WETA PBS & WETA Metro  
*Nature: American Arctic* spotlights the Arctic National Wildlife Refuge, its caribou, musk oxen (above, mother and calf), polar bears and Arctic foxes, and the planet's longest land-animal migration.



©GRAIG HASTINGS/PADI PRODUCTIONS S.L.

Saturday, April 16 at 10 p.m. on WETA PBS

*Inside the Vatican* spotlights the daily lives of those who live and work in the city-state, including the Holy Father, Pope Francis.

- 9:00 **SANDITON, SERIES 2 ON MASTERPIECE** — Part 5 of 6. Lennox and Colbourne's rivalry over Charlotte comes to a head and Georgiana makes a decision that will impact her future, forever. Edward's manipulation of Esther takes a dark turn and Alison realizes what she has been missing.  
 10:00 **BEFORE WE DIE** — [UK version] Part 5 of 6. Hannah and Billy learn how the Mimicas plan to bring the cocaine into the UK, but they don't know when or where the consignment will be delivered. Another dealer confesses to Sean's murder, but Bianca makes a discovery.  
 11:00 **INSIDE THE VATICAN** — R

## 18 Monday

- 7:00 **PBS NEWSHOUR** — Weeknights. Visit [pbs.org/newshour](http://pbs.org/newshour). Repeats next day, 7am  
 8:00 **ANTIQUES ROADSHOW: NATURAL WONDERS** — *Roadshow* explores fascinating treasures that capture the beauty and power of the natural world.  
 9:00 **SIGNATURE DISH** — A new WETA production spotlights standout dishes at restaurants around the national capital area. Episode 3: *Caribbean Favorites*. The flavors of Puerto Rico, Jamaica, and Trinidad and Tobago are on the menu in several DC establishments. Signature dishes: Jamaican *jerk chicken wings* at **Andrene's Caribbean & Soul Food** in Brightwood; *chuleta kan kan*, a fried pork chop at **La Famosa** in the Navy Yard; and *curried beef roti* at **Cane** on H Street, NE. Repeats Sun 4/24, 7:30pm  
 9:30 **ANTIQUES ROADSHOW RECUT: TREASURE FEVER, PART 1** — Explore artifacts and artistry with health and medicine history.  
 10:00 **POV: ON THE DIVIDE** — In this documentary film, the lives of three Latinx people intersect at the last abortion clinic on the border in McAllen, Texas. (90 min.)

## 19 Tuesday

- 8:00 **FINDING YOUR ROOTS WITH HENRY LOUIS GATES, JR., SEASON 8** — In this WETA co-production, join Harvard scholar Henry Louis Gates, Jr., as he delves into the genealogy of famous Americans. Episode 10 of 10. *Where Did We Come From?* Gates journeys with Erin Burnett, Amy Carlson and the late André Leon Talley, three guests from diverse backgrounds, as they meet the ancestors who laid the groundwork for their success. Repeats Sat 4/23, 7pm, midnight  
 9:00 **RISE OF THE NAZIS, SERIES 2: DICTATORS AT WAR** — Part 2 of 3. *Stalingrad*. In 1942, after Hitler loses the Battle of Moscow, winter in Russia sets in, and German troops are in desperate need of fuel and resources. Repeats Sun 4/24, 3pm  
 10:00 **FRONTLINE: THE POWER OF BIG OIL** — Part 1 of 2. *Frontline* reports on the fossil fuel industry's history of casting doubt and delaying action on climate change. The program is part of a series tracing the industry's decades of casting doubt on the science, missed opportunities, and the ongoing attempts to hold Big Oil to account. (90 min.)



© 2021 THE TRICK TV LTD.

**Friday, April 22 at 10 p.m. on WETA PBS & WETA Metro**

*The Trick*, a drama starring Jason Watkins, presents a tale of the 2009 Climategate scandal, when media undermined the science of climate change. In the story, a professor and his team find their 30 years of research work questioned in a 'fake news' attack.

## 20 Wednesday

- 8:00 CHANGING PLANET** — In a special program marking the upcoming Earth Day, join conservationist Dr. M. Sanjayan (*Big Blue, Earth—A New Wild*) for a global environmental health check of seven of Earth's bellwether biomes in iconic locations from the Arctic to the Amazon.
- 10:00 EARTH EMERGENCY** — Explore how environmental feedback loops are amplifying global warming and what we can do about it. Narrated by Richard Gere, this film asks whether we are approaching a point of no return or if we have the will and vision to act now. **Repeats Sun 4/24, 1pm**

## 21 Thursday

- 8:00 MIDSOMER MURDERS, SERIES 20** — *Episode 8 of 12. The Lions of Causton, Pt 2.* Barnaby and Winter investigate a death at Stubbington Hall Sports Club, home to the Causton Lions rugby team.
- 9:00 THE BLETCHLEY CIRCLE, SERIES 2** — *Episode 2 of 4. Blood on Their Hands, Pt 2.* Alice is facing the gallows — it's a race against time to prove her innocence and save her life. Through a search of documents and confidential police information, the women believe the murder was part of a wider military cover-up. Susan learns the truth; meanwhile, the other women's lives are in danger.
- 10:00 THE FALL, SERIES 1** — *Part 5 of 5. The Vast Abyss.* Gibson begins to probe the Annie Brawley attack, bringing her closer to the killer. Gibson and Sarah Kay's father mount a public plea for information. Spector is caught out in lies that threaten to expose him; he contacts Gibson.

## 22 Friday

- 8:00 WASHINGTON WEEK** — **Repeats Sat 4/23, 6am, 6:30pm; Mon 4/25, 7:30am**
- 8:30 HISTORY WITH DAVID RUBENSTEIN, SEASON 3** — *Episode 3 of 10. Jeffrey Rosen.* **Repeats Sun 4/24, 6:30pm**
- 9:00 GREAT PERFORMANCES: NOW HEAR THIS: AARON COPLAND: DEAN OF AMERICAN MUSIC** — Learn how the works of an American classical composer developed into a signature American sound drawing from his Jewish roots, modernism and American folk music. **Repeats Sun 4/24, noon**
- 10:00 THE TRICK** — A drama relates the 2009 Climategate scandal, when a media storm undermined confidence in the science of climate change. A professor and his team find themselves in the middle of an investigation, with their 30 years of research work being questioned in the first "fake news" attack. (90 min.)

## 23 Saturday

**6AM-6PM See the Saturday, April 2 listings.**

- 6:00 PBS NEWS WEEKEND** — Geoff Bennett anchors.
- 6:30 WASHINGTON WEEK** — R
- 7:00 FINDING YOUR ROOTS WITH HENRY LOUIS GATES, JR., SEASON 8** — *Episode 10 of 10. Where Did We Come From?* **Repeats midnight**
- 8:00 THE VOTE: AMERICAN EXPERIENCE** — *Parts 1-4 of 4.* Meet the unsung heroes of the movement and relive the dramatic and unrelenting campaign that led to passage of the 19th Amendment, granting American women the vote and ushering in the largest expansion of voting rights in U.S. history. **Repeats Sun 4/24, 11pm**

## 24 Sunday

**6AM-12N See the Sunday, April 3 listings.**

- 12N GREAT PERFORMANCES: NOW HEAR THIS: AARON COPLAND: DEAN OF AMERICAN MUSIC** — R
- 1:00 EARTH EMERGENCY** — R
- 2:00 RISE OF THE NAZIS, SERIES 2: DICTATORS AT WAR** — *Part 1 of 3. Barbarossa.* R
- 3:00 RISE OF THE NAZIS, SERIES 2: DICTATORS AT WAR** — *Part 2 of 3. Stalingrad.* R
- 4:00 BIG SONIA** — Holding out in a defunct shopping mall, 91-year-old Sonia Warshawski — great-grandmother, businesswoman, and Holocaust survivor — runs the tailor shop she's owned for more than 30 years. But when she's served an eviction notice, she resists. A story of generational trauma, the film explores the power of love to triumph over bigotry, and the power of truth-telling to heal. **Repeats Sat 4/30, 7pm, 11pm**
- 5:00 THE CHAVIS CHRONICLES**
- 5:30 A SEAT AT THE TABLE**
- 6:00 PBS NEWS WEEKEND** — Geoff Bennett anchors. **Repeats Monday, 7am**
- 6:30 HISTORY WITH DAVID RUBENSTEIN, SEASON 3** — *Episode 3 of 10. Jeffrey Rosen.* R
- 7:00 TELL ME MORE WITH KELLY CORRIGAN, SERIES 3** — In a new season of this WETA co-production, *New York Times* bestselling author Kelly Corrigan conducts more interviews with influential people, exploring her guests' humanity and passions. *Episode 3 of 10. Father Greg Boyle, Jesuit and Activist.*
- 7:30 SIGNATURE DISH** — *Episode 3: Caribbean Favorites.* R
- 8:00 CALL THE MIDWIFE, SERIES 11** — *Part 6 of 8.* There are new beginnings at Nonnatus House. Sister Hilda runs a tight ship and Shelagh has joined the team to ease their workload. Lucille prepares for her first day back at work, but she is not coping well.
- 9:00 SANDITON, SERIES 2 ON MASTERPIECE** — *Part 6 of 6.* Alison prepares to leave Sanditon with her dreams of romance in tatters, and Esther faces a bleak future. Charlotte considers what her future will look like. When Sidney's belongings are returned to Sanditon, Georgiana learns some shocking truths.
- 10:00 BEFORE WE DIE** — (UK version) *Part 6 of 6.* The police attempt to bust the Mimicas' operation, but they are in for a surprise. With Billy and Christian's help, Hannah manages to turn the tables on the Mimicas and set up a dramatic and conclusive showdown.
- 11:00 THE VOTE: AMERICAN EXPERIENCE** — *Parts 1-4 of 4.* R

## 25 Monday

- 7:00 PBS NEWSHOUR** — Weeknights. Visit [pbs.org/newshour](http://pbs.org/newshour). **Repeats next day, 7am**
- 8:00 ANTIQUES ROADSHOW: GROUNDS FOR SCULPTURE, HOUR 2** — More Garden State treasures bloom when *Antiques Roadshow* visits the Grounds for Sculpture.
- 9:00 SIGNATURE DISH** — A new WETA production spotlights standout dishes at restaurants around the national capital area. **Episode 4: Masters of Spice.** Host Seth Tillman meets three chefs who excel at balancing intense

WETA Magazine is published monthly by the Greater Washington Educational Telecommunications Association for its members. Three dollars of each member's dues are designated for its subscription. WETA occasionally exchanges member names with other organizations. If you wish that your name not be exchanged, please call Audience Services at 703-998-2724. ©2022 by Greater Washington Educational Telecommunications Association. All rights reserved. No part of this magazine may be reproduced in any form without written permission. Periodical postage paid at Arlington, VA 22210 and additional offices. Send address changes to WETA, 3939 Campbell Avenue, Arlington, Virginia 22206. Volume 35, Number 4. ISSN No. 1041-2700.

PRINTED ON RECYCLED PAPER



Publisher Mary Stewart  
Editor Jeff Giese  
Design MANIFEST LLC

Editorial and Advertising Offices  
3939 Campbell Ave.  
Arlington, VA 22206





©DRF

**Wednesday, April 27 at 8 p.m. on WETA PBS & WETA Metro**  
*Nature: Portugal: Wild Land on the Edge* spotlights the country's wildlife and landscapes, impacted by its history as a global trading hub. The program features wild horses, storks, monk seals and more.

heat with incredible flavors. Signature dishes: *muu som*, a stir-fried rice-fermented sour pork dish at **Thip Khao** in Columbia Heights, DC; *jungle laal maas*, a spicy goat curry at **Pappe** in Logan Circle; and a whole steamed fish with fermented peppers and scallions at **Q by Peter Chang** in Bethesda, MD.

**9:30 WETA ARTS** — See the April 11, 9:30 p.m. listing. **R INDEPENDENT LENS: AWARE: GLIMPSES OF CONSCIOUSNESS** — In this documentary, what begins as a science film emerges far beyond the explicable. Follow six brilliant researchers approaching consciousness from different perspectives. (90 min.)

## 26 Tuesday

**8:00 WE REMEMBER: SONGS OF SURVIVORS** — Holocaust survivors partner with songwriters to turn their life experiences into powerful music for a community concert. The resulting songs, filled with joy and healing, celebrate the extraordinary lives of this resilient generation.

**9:00 RISE OF THE NAZIS, SERIES 2: DICTATORS AT WAR** — *Part 3 of 3. The Home Front.* After Stalingrad, Hitler's stress intensifies. For once there is no master plan. Hitler leaves it to the men around him to pull Germany back from the abyss.

**10:00 FRONTLINE: THE POWER OF BIG OIL** — *Part 2 of 2.* See the April 19, 10 p.m. listing.

## 27 Wednesday

**8:00 NATURE: PORTUGAL: WILD LAND ON THE EDGE** — Discover the wildlife and landscapes of Portugal, impacted by its history as a global trading hub. From forest to coast, witness the majesty of the country's wild horses, storks, monk seals and more.

**9:00 NOVA: CAN WE COOL THE PLANET?** — As global temperatures rise, scientists are exploring solutions, from planting trees to sucking carbon out of the air to geo-engineering. But would they work? What are the risks of engineering Earth's climate?

**10:00 CLIMATE CHANGE—THE FACTS** — Scientists explore the impact of climate change and what could happen if global warming exceeds 1.5 degrees. Discover how the latest innovations and technology are posing potential solutions and what individuals can do to prevent further damage. Sir David Attenborough hosts.

## 28 Thursday

**8:00 MIDSOMER MURDERS, SERIES 20** — DCI John Barnaby and his junior partner DS Jamie Winter investigate murders in the English countryside. *Episode 9 of 12. Till Death Do Us Part, Pt 1.* Barnaby and wife Sarah are in attendance at a family friend's wedding when the bride disappears during the reception. Continues May 5.

**9:00 THE BLETCHLEY CIRCLE, SERIES 2** — *Episode 3 of 4. Uncustomed Goods, Pt 1.* Millie's import/export sideline leads to her abduction by a crime ring involved in black market trading — and in human trafficking. Millie negotiates her release, and then she enlists Alice, Jean and Lucy to aid the trafficked girls. Continues May 5.

**10:00 THE FALL, SERIES 2** — Gillian Anderson and Jamie Dornan star. *Part 1 of 6. These Troublesome Disguises.* Ten days after her telephone call with the killer, Gibson tries to help Annie Brawley recapture her memories of the attack that left her hospitalized. Rose Stagg, a friend to Smith, is dragged into the case, forcing her to reveal secrets from her past. Meanwhile, after splitting with Sally Ann, Spector returns to Belfast.

## 29 Friday

**8:00 WASHINGTON WEEK** — Repeats Sat 4/30, 6am, 6:30pm; Mon 5/2, 7:30am

**8:30 HISTORY WITH DAVID RUBENSTEIN, SEASON 3** — *Episode 4 of 10. Bret Baier. Repeats Sun 5/1, 6:30pm*

**9:00 GREAT PERFORMANCES: NOW HEAR THIS: NEW AMERICAN VOICES** — Host Scott Yoo explores how American composers are inspired by their immigrant roots, spotlighting Brazilian-born Sergio Assad and Indian American Reena Esmail.

**10:00 INTERNATIONAL JAZZ DAY 2022** — Jazz stars from around the globe come together to celebrate the unifying power of music. Hosted by Michael Douglas, the program features performances by Herbie Hancock, Andra Day, Dee Dee Bridgewater, Dianne Reeves, Marcus Miller and others.

## 30 Saturday

**6AM-6PM** See the Saturday, April 2 listings.

**6:00 PBS NEWS WEEKEND** — Geoff Bennett anchors.

**6:30 WASHINGTON WEEK** — R

**7:00 BIG SONIA** — See the April 24, 4 p.m. listing. **R**

**8:00 AMERICAN MASTERS: KEITH HARING: STREET ART BOY** — Explore the definitive story of international art sensation Keith Haring, who blazed a trail through the art scene of '80s New York and revolutionized the worlds of pop culture and fine art. **Repeats 12m**

**9:00 AMERICAN MASTERS: LENNON NYC** — Learn the story of one of the most famous and influential artists of the 20th century, John Lennon, and how he ultimately found redemption not in the public adoration he craved as a youth, but in the quiet and simple pleasures of fatherhood. **Repeats 1am**

**11:00 BIG SONIA** — R

Via Antenna 26.3  
 Comcast 266/1147  
 Cox 801  
 Fios 472  
 RCN 38

**WETA**



The WETA PBS Kids channel offers a safe haven for young viewers, presenting educational programming 24 hours each day, seven days a week.



PIPELINE STUDIOS, ©SHOE INK

*Elinor Wonders Why*, 9:30 a.m. on WETA PBS Kids and 10:30 a.m. on WETA PBS, features the movie *A Wonderful Journey*, premiering April 18 and presenting a camping adventure and frog mystery.

Visit [weta.org/schedule](http://weta.org/schedule) for complete WETA PBS Kids listings.

## British Television at Its Best

The WETA UK channel is devoted to the best in British television programming, presenting beloved classics and contemporary series around the clock, seven days a week. WETA UK offers a full schedule of fine entertainment programming — featuring drama, mystery and comedy — in addition to documentary series and news reports.

### APRIL P.M. PROGRAMMING ON WETA UK

VISIT [WETA.ORG/SCHEDULE](http://WETA.ORG/SCHEDULE) FOR A COMPLETE PROGRAM LINEUP

	SUNDAY	MONDAY	TUESDAY	WEDNESDAY	THURSDAY	FRIDAY	SATURDAY
<b>12pm</b>	Escape to the Country, Series 2	Last of the Summer Wine	Last of the Summer Wine	Last of the Summer Wine	Last of the Summer Wine	Last of the Summer Wine	Pie in the Sky, Series 2
12:30pm		As Time Goes By	As Time Goes By	As Time Goes By	As Time Goes By	As Time Goes By	
<b>1pm</b>	Escape to the Chateau, Series 5	A Place to Call Home	A Place to Call Home	A Place to Call Home	A Place to Call Home	A Place to Call Home	The Indian Doctor, Series 1 & 2
1:30pm							
<b>2pm</b>	Lucy Worsley's Royal Myths & Secrets	Escape to the Country, Series 2	Pie in the Sky, Series 2	Foyle's War, Series 4	Midsomer Murders, Series 19	McLeod's Daughters, Series 2	• Midsomer Murders Special (4/2) • Death in Paradise, Series 11 (starts 4/9)
2:30pm							
<b>3pm</b>	• Midsomer Murders Special (4/3) • Mary Berry specials (start 4/10)	Escape to the Chateau, Series 5	All Creatures Great and Small, Series 6 & 7 (original series; two episodes)	Midsomer Murders, Series 19	Death in Paradise, Series 11	The Indian Doctor, Series 1 & 2	McLeod's Daughters, Series 2
3:30pm							
<b>4pm</b>	• Wallander, Series 4 (to 4:30pm, 4/3) • Call the Midwife, Series 8 (starts 4/10)	Lucy Worsley's Royal Myths & Secrets		Around the World in 80 Days on Masterpiece	Vienna Blood, Series 1 & 2	Shakespeare & Hathaway, Series 2	Foyle's War, Series 4
4:30pm							
<b>5pm</b>	• 5:30pm, 4/3: All Creatures Great and Small, S2 (90 min.) • Frankie Drake Mysteries, Series 4 (starts 4/10)	BBC World News Outside Source	BBC World News Outside Source	BBC World News Outside Source	BBC World News Outside Source	BBC World News Today	Around the World in 80 Days on Masterpiece
5:30pm		BBC World News America	BBC World News America	BBC World News America	BBC World News America	BBC World News America	
<b>6pm</b>	Sanditon, Series 2 on Masterpiece (starts 4/10)	'Allo, 'Allo!	'Allo, 'Allo!	'Allo, 'Allo!	'Allo, 'Allo!	'Allo, 'Allo!	• All Creatures, Ser. 2 finale (90 min, 4/2) • Sanditon, Series 2 on Masterpiece (starts 4/9)
6:30pm		(Still) Open All Hours	(Still) Open All Hours	(Still) Open All Hours	(Still) Open All Hours	(Still) Open All Hours	
<b>7pm</b>	All Creatures Great and Small (original; next ep airs Sat night)	Last of the Summer Wine	Last of the Summer Wine	Last of the Summer Wine	Last of the Summer Wine	Last of the Summer Wine	All Creatures Great and Small (original; next ep airs Sun night) (preempted 4/2)
7:30pm		As Time Goes By	As Time Goes By	As Time Goes By	As Time Goes By	As Time Goes By	
<b>8pm</b>	Escape to the Country, Series 2	Pie in the Sky, Series 2	<b>Foreign Favourites</b> • 8pm: Professor T, Series 3 • 9pm: Seaside Hotel, Series 3 • 10pm: <b>Luna &amp; Sophie</b> (starts 4/5)	Midsomer Murders, Series 19	McLeod's Daughters, Series 2	<b>Masterworks Showcase</b> • 8pm: Foyle's War, Series 4 • 9pm: Around the World in 80 Days on Masterpiece • 10pm: All Creatures Great and Small, Series 2 on Masterpiece (90 min. on 4/1) • 10pm: <b>Sanditon, Series 2 on Masterpiece</b> (starts 4/8)	The Fall, Series 3
8:30pm							
<b>9pm</b>	Escape to the Chateau, Series 5	All Creatures Great and Small, Series 6 & 7 (original series; two episodes)		<b>Death in Paradise, Series 11</b> (starts 4/6)	The Indian Doctor, Series 1 (Series 2 starts 4/14)		• Wallander, Series 4 (9pm, 4/2, 90 min.) • SS-GB (10:30pm, 4/2) • <b>Frankie Drake Mysteries, Series 4</b> (9pm, starts 4/9) • <b>The Coroner, Ser. 1</b> (10pm, starts 4/9)
9:30pm							
<b>10pm</b>	Lucy Worsley's Royal Myths & Secrets			Vienna Blood, Series 1 (Series 2 starts 4/20)	Shakespeare & Hathaway, Series 2		
10:30pm							
<b>11pm</b>	Yes Minister (2 eps)	BBC World News	BBC World News	BBC World News	BBC World News	BBC World News (11:30pm, 4/1)	The Fall, Series 2 (11:30pm on 4/2)
11:30pm		Pie in the Sky, Series 2	Professor T, Series 3	Midsomer Murders, Series 19	McLeod's Daughters, Series 2	Foyle's War, Series 4 (12m on 4/1)	
	<b>SUNDAY</b>	<b>MONDAY</b>	<b>TUESDAY</b>	<b>WEDNESDAY</b>	<b>THURSDAY</b>	<b>FRIDAY</b>	<b>SATURDAY</b>

# WETA UK Highlights

## Death in Paradise, Series 11

**Wednesdays at 9 p.m. starting April 6 on WETA UK**

The popular sun-soaked whodunnit returns for more murder mysteries with a light touch on the fictional Caribbean island of Saint Marie in the Lesser Antilles. DI Neville Parker (Ralf Little), having warmed to the island lifestyle despite his many allergies, has more crimes to solve with his team, while also dealing with the emotional complications of working at close quarters with DS Florence Cassell (Joséphine Jobert). Joining the action is new character Sergeant Naomi Thomas (Shantol Jackson). The eight brand-new episodes just made their debut in the United Kingdom in January and February.



BBC/RED PLANET

## Frankie Drake Mysteries, Series 4

**Saturdays at 9 p.m. starting April 9 on WETA UK**

Season 4 of the Canadian sleuth series set in 1920s Toronto stars Lauren Lee Smith (center left, as Frankie Drake) and Chantel Riley (far left, as Trudy Clarke) as a dynamic duo running an all-female private investigation agency. In Series 4's 10 episodes, from the wilderness to the world of high society, from an underground cabaret to a candy factory, Frankie and Trudy probe murders, kidnappings, heists and poisonings. The duo is aided by Mary (Rebecca Liddiard), a morality officer who snoops through police files, and Flo (Sharron Matthews), who helps with autopsy reports, science experiments and medical skills.



SHAFTESBURY FILMS

## Luna & Sophie

**Tuesdays at 10 p.m. starting April 5 on WETA UK**

A contemporary crime drama on the lighter side spotlights two German police detectives — best friends and polar opposites Luna Kunath (portrayed by Caroline Erikson) and Sophie Pohlmann (Katrine Jaehne) — who work together as partners in the metropolis of Potsdam. Luna, single and strong-willed, has a strong sense of empathy; while Sophie, married and mother to a young son, comes across as the more mature of the pair. The duo works on a team probing crimes around the city. The series, part of the curated international program strand *Walter's Choice*, is in German with English subtitles.



COURTESY PBS

## Sanditon, Series 2 on Masterpiece

**Fridays at 10 p.m. starting April 8 on WETA UK**

WETA UK features Season 2 of *Sanditon* on *Masterpiece*, with Crystal Clarke as heiress Georgiana Lambe and Rose Williams as Charlotte Heywood in the drama based on Jane Austen's story about a seaside English resort in the early 1800s. Following characters — established and new — through adventures, scandals and intrigue, the six episodes explore Austen's classic quandary surrounding how independent-minded young women can make their way in patriarchal Regency-era England, where society insists they take a husband. In Series 2, the arrival of army officers in Sanditon presents opportunities and dangers.



COURTESY JESS BARRATT @ RED PLANET

Also this month: History series *Lucy Worsley's Royal Myths & Secrets* continues Sundays at 10 p.m.; mystery/drama series *The Coroner* starts April 9, airing Saturdays at 10 p.m.; *Mary Berry* cooking specials air Sundays at 3 p.m. starting April 10; and *The Indian Doctor*, airing Thursdays at 9 p.m., enters Series 2 on April 14.

WETA Metro is the streaming and broadcast television channel that features popular PBS programming and engaging content curated for our local audience, including offerings spotlighting the Metro D.C. community. The channel is simulcast with WETA PBS most evenings. Each day on WETA Metro, enjoy local programs, news and public affairs offerings (such as *PBS NewsHour*, weekdays at 6 p.m./11 p.m.), and lifestyle and cultural shows.

VISIT [WETA.ORG/SCHEDULE](http://WETA.ORG/SCHEDULE) FOR A COMPLETE PROGRAM LINEUP

Stream at [weta.org/livestream](http://weta.org/livestream) or via the PBS Video App



BLACK TICKET FILMS/INDEPENDENT LENS

## Independent Lens: Writing with Fire

Saturday, April 2 at 8 p.m. on WETA Metro;  
stream on the PBS Video App

The Academy Award-nominated documentary film *Writing with Fire*, winner of a 2021 Sundance Film Festival Special Jury Award, explores how, in a cluttered news landscape dominated by men, the women journalists of India's all-female *Khabar Lahariya* ("News Wave") newspaper risk it all,

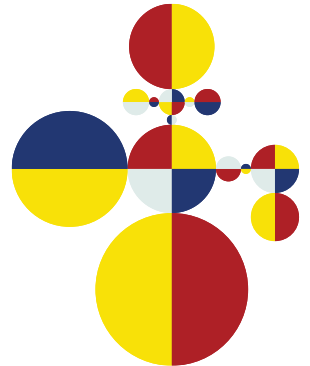
including their own safety, to cover the country's political, social and local news from a women-powered perspective. Armed with smartphones, the journalists break traditions, whether on the frontlines of India's biggest issues or within the confines of their homes. From underground network to independent media empire — now with 10 million views on their YouTube site — these women defy the odds to redefine power.

## Ken Burns Presents The Gene: An Intimate History

WETA co-production airs Saturdays,  
April 16 & 23 at 8 p.m. on WETA Metro

A 2020 WETA co-production presents a historical biography of the human genome, exploring scientific breakthroughs, powerful personal stories and the perils and promise of developments in genetics. The two-part film, based on Pulitzer Prize-winning author and WETA partner Dr. Siddhartha Mukherjee's bestselling book about how genes impact heredity, disease and behavior, also explores breakthroughs for diagnosis and treatment of genetic diseases — and the complex ethical questions raised. *The Gene* includes interviews with pioneers in the field and uses a remarkable trove of historical footage to track the journey of human genetics.

GABRIEL OROZCO, LIGHT SIGNS #4 (KOREA) (1995)  
WALKER ART CENTER, MINNEAPOLIS; PBS.ORG/THEGENE



PBS/DAVIDHOLT.ORG

## David Holt's State of Music

Mondays through Thursdays  
at 7 p.m. on WETA Metro

This series features music from emerging young artists as well as veteran masters. Shot entirely on location in North Carolina, Tennessee, Virginia and South Carolina, the programs showcase the musical heritage and scenic beauty of Southern Appalachia while introducing bluegrass, roots music, blues, new acoustic, and gospel music genres. Host David Holt, a four-time Grammy winner

who has released recordings of traditional mountain music and southern folktales, and plays 10 instruments, toured with the late Doc Watson for 14 years. Programs air four nights each week on WETA Metro, featuring Holt sharing tunes and stories, joined by outstanding performers.

The WETA World channel is a 24/7 news and public affairs service devoted to fact-based nonfiction programming, sharing broad perspectives, stories and ideas. WETA World informs and educates, presenting award-winning documentaries and domestic and international news broadcasts. The channel features a slate of original programs that examine issues with a diversity of voices and illuminate conflicts, movements and cultures around the globe.

VISIT [WETA.ORG/SCHEDULE](http://WETA.ORG/SCHEDULE) FOR A COMPLETE PROGRAM LINEUP

*Real Stories from Around the World*



## Pacific Heartbeat, Season 11

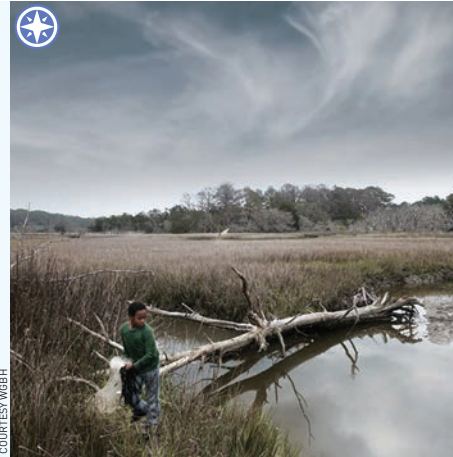
**Mondays at 7 p.m. on WETA World**

As WETA World features slates of programs with themes of community and the environment this month, anthology series *Pacific Heartbeat*, spotlighting Pacific peoples, cultures and issues, premieres new programs. *High Tide, Low Tide* (April 4): New Zealand teenagers join the global School Strike for Climate — and discover that activism, authority and awareness make for a steep learning curve. *James & Isey* (April 11): New Zealand Northlanders Isey and son James prepare for Isey's 100th birthday celebration. *Loimata, The Sweetest Tears* (April 18): A chronicle of journeys explores the redemptive tale of a family returning to their homeland of Sâmoa. *The Australian Dream* (April 25): The encore presentation spotlights the story of Indigenous AFL player Adam Goodes, exploring race, identity and belonging.

## America ReFramed: Sapelo

**Thursday, April 7 at 8 p.m. on WETA World**

On the barrier island of Sapelo off the coast of Georgia, two young brothers, JerMarkest and Jonathan, are coming of age in the last remaining enclave of the Saltwater Geechee people. Their greatest joy is exploring the island like their adoptive mother, Comelia Walker Bailey, did as a child. As Sapelo's storyteller and elder matriarch, Comelia works to preserve what remains of her African American community as it is encroached upon and transformed by outside property developers. With poetic power, *Sapelo* captures the story of a family and community on an island saturated with a history that demands preservation.



## AfroPop: The Ultimate Cultural Exchange, Season 14

**Mondays at 8 p.m. on WETA World**

*AfroPop*, the annual film series celebrating the contemporary life and cultures of people throughout the African diaspora, in its 2022 season presents five new films set in the United States, London, Tunisia, France, and the Democratic Republic of Congo, exploring an array of social, cultural and historical topics. The Monday series this month features: *Everything: The Real Thing Story* (April 4); *She Had a Dream* (April 11); *Downstream to Kinshasa* (April 18); *Restitution? Africa's Fight for Its Art* (April 25); and *Revolution from Afar* (May 2). *AfroPop* also airs on WETA Metro, 10 a.m. Fridays and noon Saturdays (preempted April 2 & 9).





Pianist Natalia Kazaryan

## Piano Virtuosity on *Front Row Washington*

By John Banther, on-air host

**W**e start the next *Front Row Washington* offerings on **April 4** with an exciting 2021 performance of the National Orchestral Institute + Festival with pianist Natalia Kazaryan and conductor James Ross. From the Clarice Smith Performing Arts Center at the University of Maryland, they perform *Toast of the Town – Overture for Orchestra* by American composer Quinn Mason; the *Romanian Concerto* by György Ligeti; and the *Piano Concerto in One Movement* by American composer Florence Price. Also this month, we present performances of music old and new featuring the Jasper Quartet, 21st Century Consort, and Andreas Staier. *Front Row Washington* airs each Monday at 9 p.m. on WETA Classical.

## A Spring Road Trip on *NSO Showcase*

By Nicole Lacroix, on-air host

**I**n April, *NSO Showcase* takes us on an exciting journey through the vast landscape of American music. We'll begin with John Adams' *Short Ride in a Fast Machine*, then observe a country wedding in Copland's *Appalachian Spring Suite*. Copland's post-war Symphony No. 3 evokes his *Fanfare for the Common Man*, and American pianist Garrick Ohlsson will play Barber's Piano Concerto, written in 1962 for the opening of (now) Geffen Hall at Lincoln Center. Tune in **Wednesday, April 6 at 9 p.m.**; the program streams throughout April at [wetaclassical.org](http://wetaclassical.org).



Aaron Copland

## Madama Butterfly and More on *Opera Matinee*

By Linda Carducci, on-air host

**S**pring unfolds in April with magnificent productions from the Metropolitan Opera, broadcast live on WETA Classical's *Opera Matinee*. Tchaikovsky's heartbreaking drama of lost love, *Eugene Onegin*, airs **April 2**, followed by Mozart's comedic masterwork, *Le Nozze di Figaro*, on **April 9**. Revenge drives the searing *Elektra* by Richard Strauss on **April 16**. George and Ira Gershwin's masterpiece of life in an African American community in the early 20th century, *Porgy and Bess*, airs **April 23**. The month closes on **April 30** with *Madama Butterfly*, Puccini's tragic tale of a geisha whose hope for love ends in betrayal. *Opera Matinee* airs Saturdays at 1 p.m. on WETA Classical.



Puccini's *Madama Butterfly*

# Classical for Washington

## Spotlight on... Morning On-Air Host Linda Carducci

If you're a WETA Classical listener who is also an early riser, you're probably familiar with Linda Carducci, the station's weekday morning host from 6 a.m. to 10 a.m., who greets the dawn daily with a special piece of music in the feature *Classical Sunrise*. Carducci is also the host for WETA Classical's local *Opera Matinee* productions.

An avid tennis player and fan (who says that her perfect day would include watching a professional tennis match outdoors), Carducci appreciates skill, precision, intellect and artistry on the court. She brings that same sensibility to the radio booth, where it informs her passion and enthusiasm for presenting classical music.

Music was a major part of her life from an early age. Carducci's father was a classical music and opera enthusiast, and her uncle was a professional jazz drummer. Her father enrolled her in piano lessons,

laying a foundation for future study; Carducci went on to train in music in college.

"I studied classical piano and received a degree in piano performance, but it wasn't until I heard and experienced real artistry from professors and professionals that I became focused on classical music, both as a player and listener," said Carducci.

Even while training as a musician, though, radio was a part of Carducci's life. "I became fascinated with the radio disc jockeys

I heard in my youth, and decided to pursue that path," she said. Carducci first hosted a classical radio program at an NPR-affiliated college station, then spent more than a decade as a rock — yes, you read that right — rock disc jockey at a radio station in Pittsburgh while working for the Pittsburgh Symphony by day.

"Working with the Symphony and its then-Music Director Andre Previn was a wonderful gift, especially for a young person right out of music school," says Carducci. "He was an exceptional talent as a conductor, composer and pianist, and had a great sense of humor and capacity for explaining music. I experienced true professional musicianship and music programming from interacting with him and watching his rehearsals with the orchestra." Her work in Pittsburgh afforded Carducci the opportunity to interact with music greats such as Isaac Stern, Vladimir Ashkenazy, Michael Tilson Thomas, Luciano Pavarotti and jazz pianist Oscar Peterson.

Today, Carducci is an enthusiastic concert goer and loves to explore chamber music and opera. She brings her passion for music onto the air at WETA Classical. "I can't imagine life without J.S. Bach and Mozart, the two composers who I especially love for their beauty and depth; I'm constantly in awe of Beethoven's creativity and courage; and I adore the piano music of Maurice Ravel," says Carducci. "I'm grateful that WETA Classical has given me the opportunity to share my background and love of classical music each day."

**"I can't imagine life without  
J.S. Bach and Mozart,  
the two composers who  
I especially love..."**

—Linda Carducci



MELISSA MAILLET PHOTOGRAPHY

## Music for Easter on *Choral Showcase*

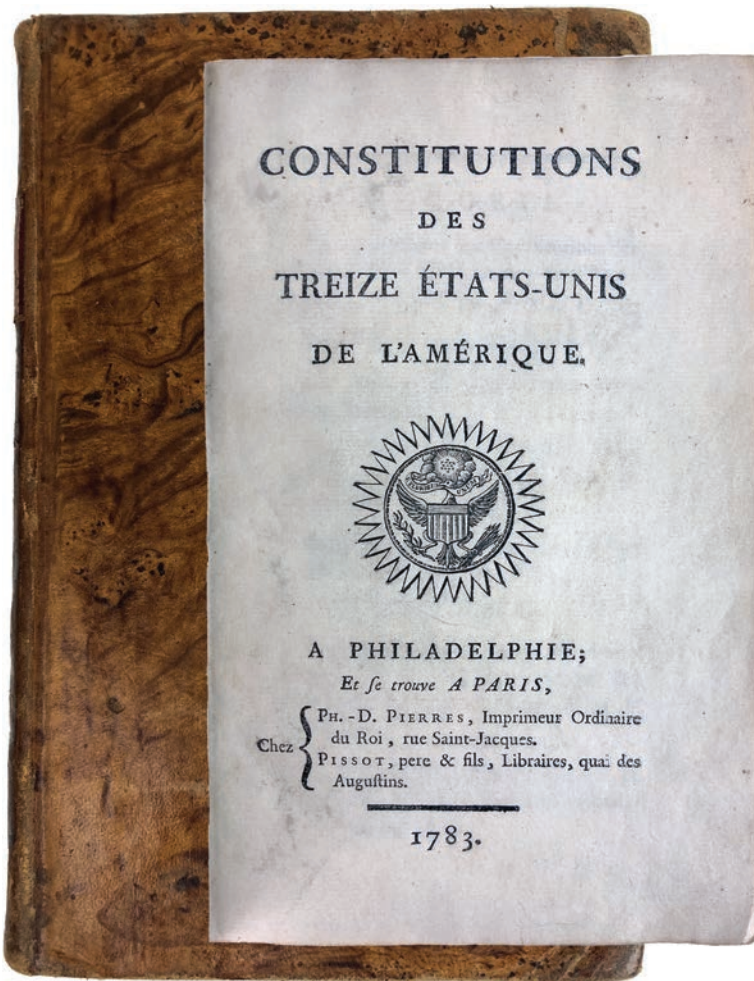
By Bill Bukowski, on-air host

You'll hear music for both Passiontide and Easter this month on *Choral Showcase*. Our "Passion Music" series continues on **April 3** with *Tenebrae Responsories*, music for matins and lauds services during Holy Week by Tomás Luis de Victoria; and on **April 10**, *Passio*, a deeply moving rendition of the St. John Passion by Arvo Pärt. We'll celebrate Easter Sunday, **April 17**, with a performance of Handel's *Messiah* as Emmanuelle Haïm conducts Le Concert d'Astree; and we'll follow on **April 24** with Eastertide music by Telemann, Ludwig Senfl, and Vaughan Williams. *Choral Showcase* airs Sundays at 9 p.m. on WETA Classical.

## WETA Passport

Stream *Masterpiece* dramas and much more with WETA Passport, our popular member benefit that provides you with access to an extensive library of the best public television programs! You're ready to activate now at [pbs.org/passport](https://pbs.org/passport) if you see a four-word activation code above your name and address at left; or go to [weta.org/passport](https://weta.org/passport) to make your qualifying donation of \$60 (or \$5 monthly) to start enjoying WETA Passport today.

## ADVERTISEMENT



### CONSTITUTIONS DES TREIZE ETATS-UNIS DE L'AMÉRIQUE

First French edition of the constitutions of the 13 original states, published in an edition of 600 copies at the suggestion of then-French Ambassador Benjamin Franklin



### 1781 ARTICLES OF CONFEDERATION

First authorized printing by order of Congress in an edition of 200 copies



### JOURNALS OF CONGRESS VOLUMES II-V, VII-IX

Record of congressional activities for 1776-1779 and 1781-1784, including the first authorized printing of the Declaration of Independence



### REPORT OF SUPREME COURT DECISION IN DRED SCOTT CASE

A first edition of the report on the infamous Supreme Court decision

## THE WEDGWOOD FAMILY COLLECTION

### COLLECTION HIGHLIGHTS

- Rare Books (American Revolution, Early Republic, Jurisprudence, Political Philosophy, Literature)
- Autographs and Pamphlets
- Fine Art and Decorative Arts

### ONLINE LIVE AUCTION

Fine Art | May 21, 2022

### CONTACT

[collections@secondstorybooks.com](mailto:collections@secondstorybooks.com)



[secondstorybooks.com](https://secondstorybooks.com)

2000 P St NW  
Washington, DC 20036  
202-659-8884

12160 Parklawn Dr  
Rockville, MD 20852  
301-770-0477