



Cisco Networking Academy
Mind Wide Open

What's New in Cisco Packet Tracer 6.1

Sew Hoon Yeo

Regional Technical Manager, APJC

July 2014



Upgrading to Packet Tracer 6.1



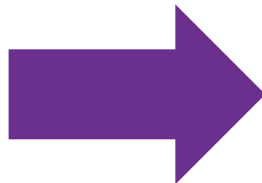
Upgrading to PT 6.1



Cisco Networking Academy®

Mind Wide Open™

Read this document
carefully



Cisco Packet Tracer 6.1 Important Information About Upgrading

Last Updated 19 June 2014

This document provides guidance on when to upgrade to Cisco® Packet Tracer (PT) 6.1. If you have questions after reviewing this information and recommended actions, please contact your Academy Support Center (ASC) or the Cisco Networking Academy® Support Desk for assistance.

The latest release of Cisco Packet Tracer, PT 6.1, is now available on the Cisco NetSpace® learning environment.

To determine when you should upgrade your lab and student computers to the PT 6.1 release, **please read this document carefully**. PT 6.1 is not fully backward-compatible with the CCNA R&S 5.0 course components, so please continue to use the currently installed version of PT until current classes are finished.

Should I Upgrade?

Current Scenario	Impact and Recommended Actions
Teaching a current CCNA R&S 5.0 course. Class end date is BEFORE 26 July, 2014	<ul style="list-style-type: none">• DO NOT Upgrade to PT to 6.1• Current class not affected• Upgrade to PT 6.1 AFTER completing this class
Teaching a current CCNA R&S 5.0 course. Class end date is AFTER 26 July, 2014	<ul style="list-style-type: none">• DO NOT Upgrade to PT 6.1• Upgrade to PT 6.1 on 26 July immediately, class will be automatically upgrade to CCNA 5.02 release.• If you do not upgrade to PT 6.1 on 26 July, course PKAs, Chapter exams PTMOs, and PTSAs will not work correctly.
Teaching a current CCNA R&S 5.0 course. Class end date is AFTER July 26, 2014. Upgraded to PT 6.1 by mistake.	<ul style="list-style-type: none">• Continue to use PT 6.1; DO NOT revert back to PT 6.0.1, as this will result in version incompatibility issues.• You will encounter following issues when running PT 6.1 and CCNA R&S 5.0 courses:<ul style="list-style-type: none">○ PKA instructions will be out of alignment ('Interface G1/1' vs. 'Interface G0/1')○ Skip the affected PTMOs listed in the table that follows○ Do not activate the PTSAs, as they will not be scored correctly• On July 26, 2014, the class will automatically be upgraded to the CCNA 5.02 release and the issues will be resolved.

Should I Upgrade?

Current Scenario	Impact and Recommended Actions
Teaching one of the transitional CCNA R&S 5.0 courses : Network Basics, Routing Protocols, Switched Networks	<ul style="list-style-type: none">• DO NOT upgrade to PT 6.1. Continue to use PT 6.0.1• Bug fixes will not be implemented for these courses; there will not be a 5.02 release.• Migrate as soon as possible to the recommended four-course sequence to avoid compatibility issues.
Not teaching a CCNA R&S 5.0 course No plan for a CCNA R&S course until AFTER July 26, 2014.	Simply upgrade to PT 6.1 before you open your next CCNA R&S class, which will be version 5.02.

PT 6.1 Bug Fix Impact on CCNA R&S

Course Name	Component Affected
Introduction to Networks (ITN)	<ul style="list-style-type: none">• PTSAs: All• PMTOs: Chapter 8 exam, form 27731• PKAs:<ul style="list-style-type: none">○ Examine the ARP Table, page 5.2.1.7○ Packet Tracer Multiuser Tutorial, page 10.4.1.2○ Packet Tracer Multiuser - Implement Services, page 10.4.1.3○ Exploring Internetworking Devices, page 6.3.1.10○ Identify MAC and IP Addresses, page 5.1.4.4
Routing and Switching Essentials (RSE)	<ul style="list-style-type: none">• PTSAs: All• PMTOs:<ul style="list-style-type: none">○ Pre-test exam, form 27660○ Chapter 10 exam, form 27120○ Practice Final exam, form 27123• PKAs:<ul style="list-style-type: none">○ Configuring Router-on-a-Stick Inter-VLAN Routing, page 5.1.3.6○ Documenting the Network, page 4.1.2.9○ Configuring VLANs, page 3.2.1.7○ Configuring Trunks, page 3.2.2.4○ Troubleshooting a VLAN Implementation - Scenario 1, page 3.2.4.7○ Troubleshooting a VLAN Implementation - Scenario 2, page 3.2.4.8○ Troubleshooting Inter-VLAN Routing, page 5.2.2.4○ Skills Integration Challenge, page 5.4.1.2○ Skills Integration Challenge, page 6.6.1.2○ Skills Integration Challenge, page 10.3.1.2○ Skills Integration Challenge, page 3.4.1.2

PT 6.1 Bug Fix Impact on CCNA R&S

Course Name	Component Affected
Scaling Networks (ScaN)	<ul style="list-style-type: none">• PTSAs: All• PMTOs:<ul style="list-style-type: none">○ Chapter 4 exam, form 27364○ Chapter 7 exam, form 27367○ Chapter 8 exam, form 27358PKAs:<ul style="list-style-type: none">○ Skills Integration Challenge, page 3.2.1.3○ Configuring EtherChannel, page 3.2.2.3○ Troubleshooting EtherChannel, page 4.4.2.2○ Configuring Wireless LAN Access, page 4.5.1.2○ Skills Integration Challenge
Connecting Networks (CN)	<ul style="list-style-type: none">• PTSAs: All• PMTOs: None• PKAs:<ul style="list-style-type: none">○ Troubleshooting Enterprise Networks 1, page 9.2.3.12○ Skills Integration Challenge – EIGRP, page 1.4.1.3○ Configuring VPNs (Optional), page 7.1.2.4○ Configuring GRE, page 7.2.2.3○ Troubleshooting GRE, page 7.2.2.4○ Configuring Syslog and NTP, page 8.1.2.5

CCNA R&S 5.02 Release

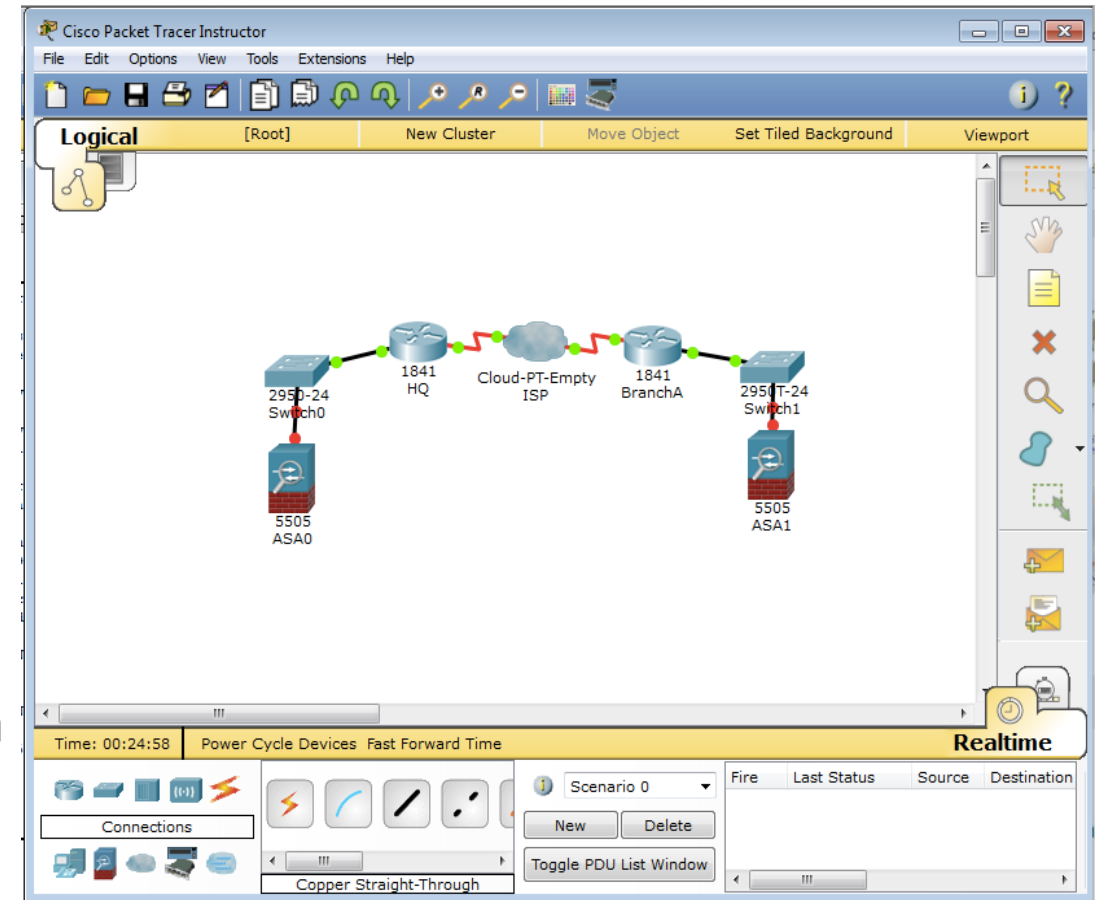
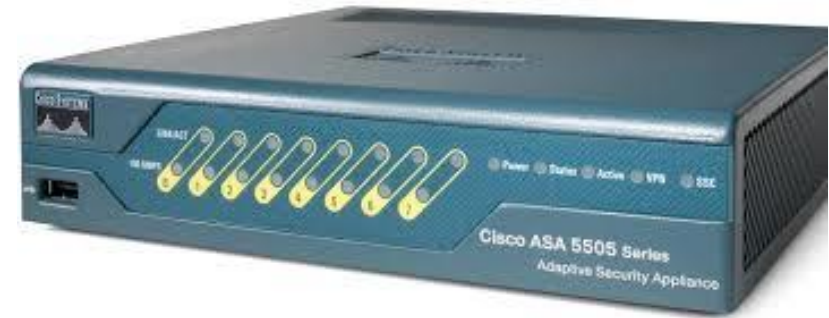
- Target 26 July 2014
- Improvements in the following course components :
 - Instructions for the affected PKA files
 - Affected chapter exam PTMOs
 - Affected PTSAs

New in PT 6.1



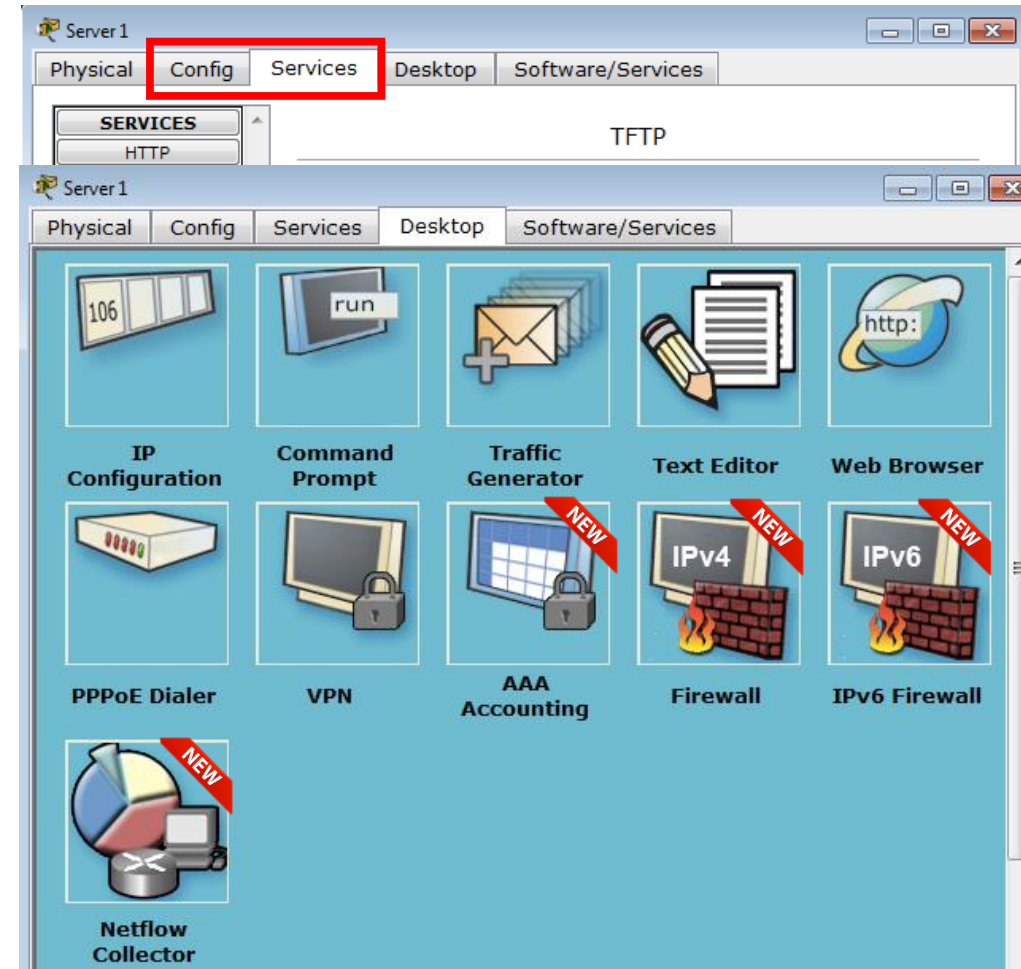
New in Packet Tracer 6.1

- Two versions
 - Instructor version, include Activity Wizard
 - Student version
- ASA5505 Support
- IOS 15 [15.0.2-SE4(ED)] image support for C2960
- Enhanced NetFlow Support
- Enhanced OSPF, OSPFv3 Support
- Enhanced EIGRP, EIGRPv6 Support
- Bug Fixes, eg corrected Gigabit Ethernet interface (G0/1, G0/2) designation in 2960 switch
- Fully supported on Windows 7 and Windows 8 or 8.1. NO support for Windows Vista



New Services / Applications

- New service tab (config and service tabs mixed in previous versions)
- Netflow collector as a new server desktop application
- AAA accounting desktop application
- IPv4 and IPv6 firewalls moved from service to desktop application
- Zone-Based Policy Firewall for IPv6
- DHCP service for IPv6
- IPv6 CEF
- IPv6 IPSec



IPv6 Routing Protocols Enhancements

- OSPFv3 enhancements
 - distance command
 - "ipv6 ospf neighbor" interface subcommand
 - "neighbor router-id" command
 - "area range" command
 - ip ospf network point-to-point (loopback interface only)
 - "auto-cost reference-bandwidth"
- EIGRPv6 Enhancements
 - EIGRP over Frame Relay
 - distance command
 - EIGRP debug and authentication commands
- RIPng Enhancements
 - distance command update
 - "default-information originate" command

DHCP Enhancements

- Show and clear ip dhcp conflict
- DHCP snooping
- IPv4 Automatic Private IP Addressing (APIPA) in case of DHCP lookup failure
- DHCPv6 commands in IOS15
- ipv6config /renew and /release on PC
- NDv6

Etherchannel Expansion (Layer 3)

- Etherchannel Expansion (Layer 3)

```
2811#conf t
Enter configuration commands, one per line. End with CNTL/Z.
2811(config)#int ?
  Dot11Radio      Dot11 interface
  Ethernet         IEEE 802.3
  FastEthernet     FastEthernet IEEE 802.3
  GigabitEthernet GigabitEthernet IEEE 802.3z
  Loopback         Loopback interface
  Port-channel     Ethernet Channel of interfaces
  Serial          Serial
  Tunnel           Tunnel interface
  Virtual-Template Virtual Template interface
  Vlan             Catalyst Vlan
  range           interface range command
2811(config)#int
```



Router0

Physical Config CLI

IOS Command Line Interface

A summary of U.S. laws governing Cisco cryptographic products may be found at:
<http://www.cisco.com/wl/export/crypto/tool/stqrg.html>

If you require further assistance please contact us by sending email to
export@cisco.com.

cisco 2811 (MPC860) processor (revision 0x200) with 60416K/5120K bytes of memory
Processor board ID JAD05190MTZ (4292891495)
M860 processor: part number 0, mask 49
4 FastEthernet/IEEE 802.3 interface(s)
239K bytes of NVRAM.
62720K bytes of processor board System flash (Read/Write)

Configuration register is 0x2102

```
2811#sh ip int br
```

Interface	IP-Address	OK?	Method	Status	Protocol
FastEthernet0/0	unassigned	YES	unset	up	up
FastEthernet0/1	unassigned	YES	unset	up	up
FastEthernet1/0	unassigned	YES	unset	administratively down	down
FastEthernet1/1	unassigned	YES	unset	administratively down	down
Vlan1	unassigned	YES	unset	administratively down	down
Port-channel 1	10.10.10.1	YES	manual	up	up

2811#

Copy Paste

Switches :

- IOS 15 support for Catalyst 2960 switch. The IOS 15 image has to be downloaded by TFTP or FTP from a server device reachable by the switch in Packet Tracer

The screenshot displays the Packet Tracer interface with a Catalyst 2960 switch and a TFTP server.

Switch Configuration:

```
SW_IOS_15#copy tftp://10.10.10.1/c2960-lanbasek9-m.bin flash:
Address or name of remote host [OK]
Source filename [OK]
Destination filename [OK]
Accessing tftp://10.10.10.1/
Loading c2960-lanbasek9-m.bin
!!!!!!!!!!!!!!!!!!!!
!!!!!!!!!!!!
[OK - 4670455 bytes copied]
4670455 bytes copied
SW_IOS_15#
```

Flash Directory:

```
SW_IOS_15#sh flash:
Directory of flash:/
 1 -rw-  123456789  c2960-lanbasek9-m.bin
 2 -rw-           0
```

Configuration Register:

```
SW_IOS_15#confi
Enter configura
SW_IOS_15(confi
SW_IOS_15(confi
SW_IOS_15#
%SYS-5-CONFIG_I
SW_IOS_15#
```

TFTP Server Configuration:

Physical | Config | Services | Desktop | Software/Services

SERVICES

- HTTP
- DHCP
- DHCPv6
- TFTP

TFTP Service:

Service: ☒ On ☐ Off

File:

pt3000-i6q4l2-mz.121-22.EA4.bin

SW Version: 15.0(2)SE4

SW Image: C2960-LANBASEK9-M

Buttons: Copy, Paste, Remove File

Simulation / Activity Wizard

- Expanded buffer for PDUs
- Update PDU index in the PDU Window
- Filters based on IPv4 or IPv6 traffic in simulation mode
- Improved scripting and variable management Activity Wizard

Additional Information



Packet Tracer Availability

- Packet Tracer is available free to all Networking Academy instructors, students and alumni
- To download Packet Tracer, log in to Cisco NetSpace, click Offerings > CCNA > Cisco Packet Tracer, then select your download package

Offerings

> [All Resources](#)

● [IT Essentials](#)

● **CCNA**

[CCNA Routing and Switching](#)

[CCNA Discovery](#)

[CCNA Exploration](#)

[CCNA Routing and Switching Instructor Resource Spotlight](#)

[CCNA R&S Bridging Materials](#)

> [CCNA Security](#)

> [CCNP](#)

> [Health Information Networking](#)

CCNA

The Cisco CCNA curriculum helps students prepare for entry-level career opportunities, continuing education, and the globally recognized Cisco CCENT and CCNA certifications. Our new CCNA Routing and Switching curriculum aligns with the latest CCENT and CCNA certification exams.

CCNA Routing and Switching

CCNA Routing and Switching courses are designed to take advantage of the improved flexibility and course management capabilities in the Cisco NetSpace learning environment. This [short video](#) provides an introduction to the CCNA Routing and Switching curriculum and its features and functionality.

In addition to the courses, [CCNA Routing and Switching bridging materials](#) have been developed to address technical gaps in comprehension and help CCNA Discovery and CCNA Exploration students prepare for the new Cisco CCENT or CCNA Routing and Switching certification exam, or the new CCNA Routing and Switching courses. [Learn more about CCNA Routing and Switching.](#)

CCNA Discovery

CCNA Discovery covers general networking theory and the basics of routing, switching, and advanced technologies within the context of environments ranging from home and small office networks to more complex enterprise models. [Learn more about CCNA Discovery.](#)

CCNA Exploration

CCNA Exploration explains the role of application protocols and their relation to networking services. The four courses immerse students in routing, switching, and advanced technologies. [Learn more about CCNA Exploration.](#)

Cisco Packet Tracer

Packet Tracer is an integral part of the CCNA curriculum. Packet Tracer provides simulation, visualization, authoring, assessment, and collaboration capabilities and facilitates the teaching and learning of complex technology concepts. [Learn more about Cisco Packet Tracer.](#)

Assessment

A wide array of assessment types and tools are available to help students, instructors, and administrators understand the strengths and weaknesses of individuals as they progress through a curriculum. [Learn more about Cisco Networking Academy Assessments.](#)

For More Information

The following Packet Tracer resources are available on **Cisco NetSpace > Offerings > CCNA > Cisco Packet Tracer**

- FAQs
- At A Glance
- Overview Presentation
- Packet Tracer 6.1 Executables
 - Windows
 - Linux
 - Linux – Ubuntu installation

Packet Tracer Discussion Forum

- Access the global instructor community for questions, discussions, collaboration, and activity sharing: **Cisco NetSpace > Communities > Packet Tracer**

Packet Tracer

Forums

Packet Tracer Support

Packet Tracer Best Practices

Activity Wizard

Packet Tracer Training

Packet Tracer Games

Javascript Authoring in PT

PTSA - Packet Tracer Skills Assessments

Community Suggestions


Languages

Packet Tracer Community

Welcome to the new Packet Tracer Community

If you were kind enough to share activities and files in the old community please reload them to the files area of the new community. Thanks

PT Community



Resources

Files

Blog Posts

You can earn CEU certificates!

March 11, 2014 by Karen Alderson

Welcome

October 30, 2013 by Brad Anderson

Thank you.



Cisco Networking Academy
Mind Wide Open