

RED HAT  
**SUMMIT**

BOSTON, MA  
JUNE 23-26, 2015

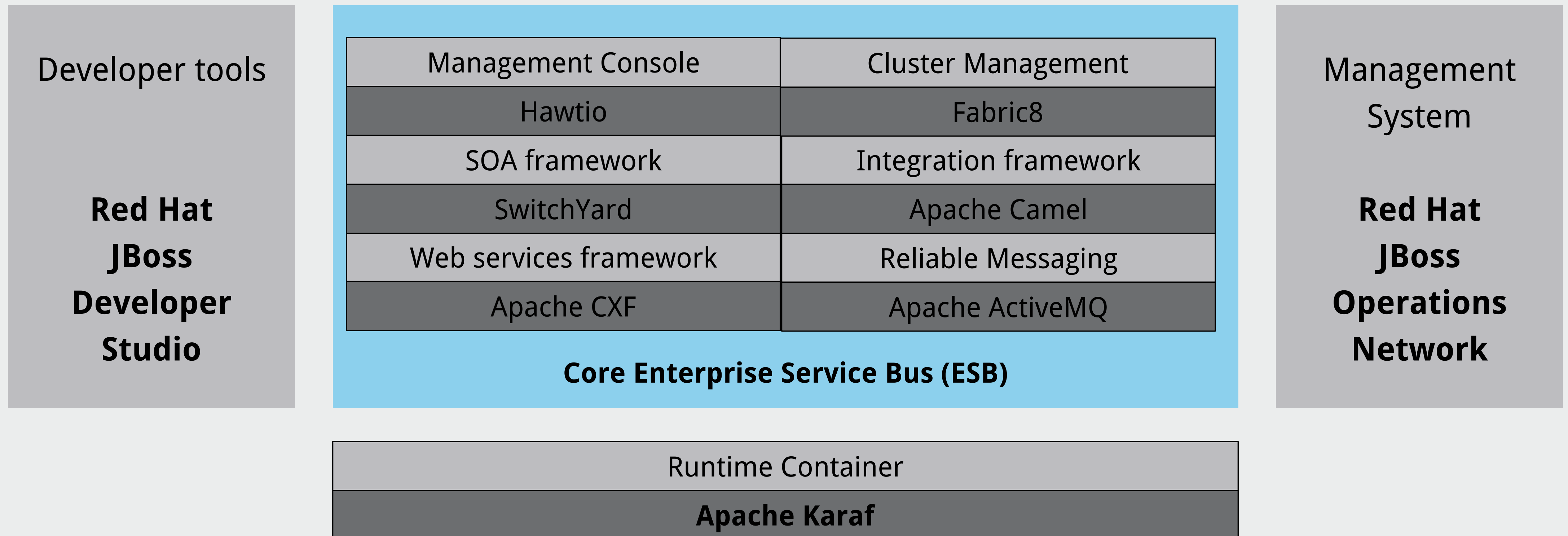
## *Whats's new in Fuse 6.2*

Hiram Chirino  
Platform Architect  
June 5th 2015

# What is JBoss Fuse?

# JBoss Fuse:

## Red Hat JBoss Fuse



# What JBoss Fuse Brings to Red Hat's Customers:

## Integration that extends to the edges of enterprise

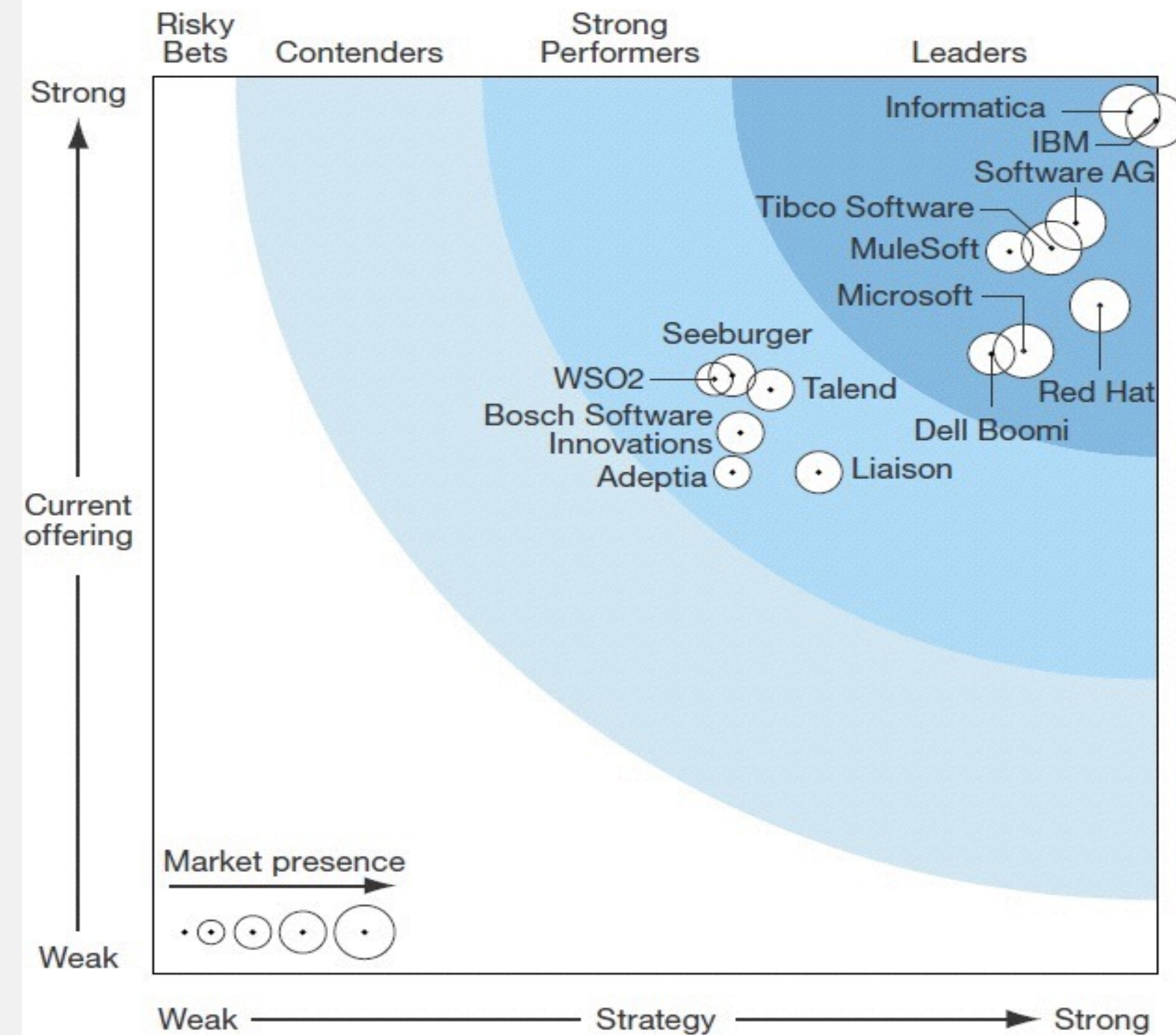
- **Easy to deploy** – sophisticated tooling, connectors, small footprint makes it easy to deploy with less hardware and limited IT staffing
- **Many deployment options** – deploy on-premise or in the cloud in any configuration, and change on the fly with automated provisioning
- **Standards-based** – commitment to industry standards ensures that JBoss infrastructure is easy to modify and maintain
- **Centralized management** – innovative tooling makes it ease to configure, deploy, manage and maintain integration infrastructure
- **Open source** – less expensive and pay as you go to reduce over all costs in all stages of the project

# Leader in Forrester Wave: Hybrid Integration 2014

Red Hat leader in 3 categories:

- Deep Integration
- Cloud Integration
- Internet of things (IOT)

Figure 6 Forrester Wave™: Hybrid<sup>2</sup> Integration: Deep Integration, Q1 '14



## Check out the IDC White Paper

- *Highlights why our customers love Fuse!*
- *Bottom line: amazing ROI*

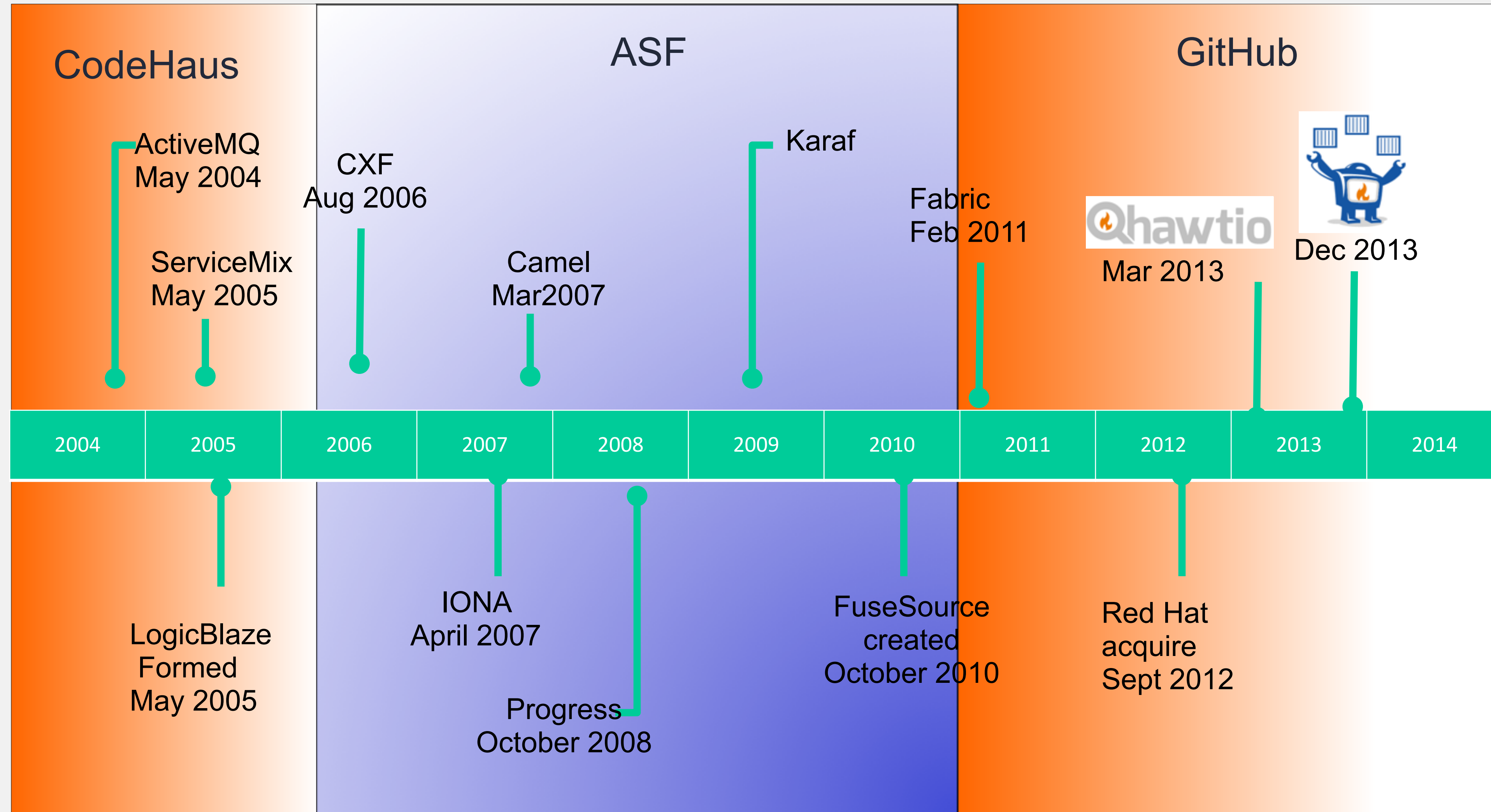
### Business Value Highlights

Red Hat JBoss Fuse delivers an average three-year ROI of 488% in a payback time of 8.2 months through the following business value benefits:

- 51.5% more applications integrated per year
- 40.8% fewer FTEs per application integration
- 62.8% less application downtime related to integration
- 18.1% improved middleware integration solution performance
- 34.2% less costly than previous middleware integration solution

<http://www.redhat.com/en/resources/value-red-hat-integration-products>

# History of Fuse Development



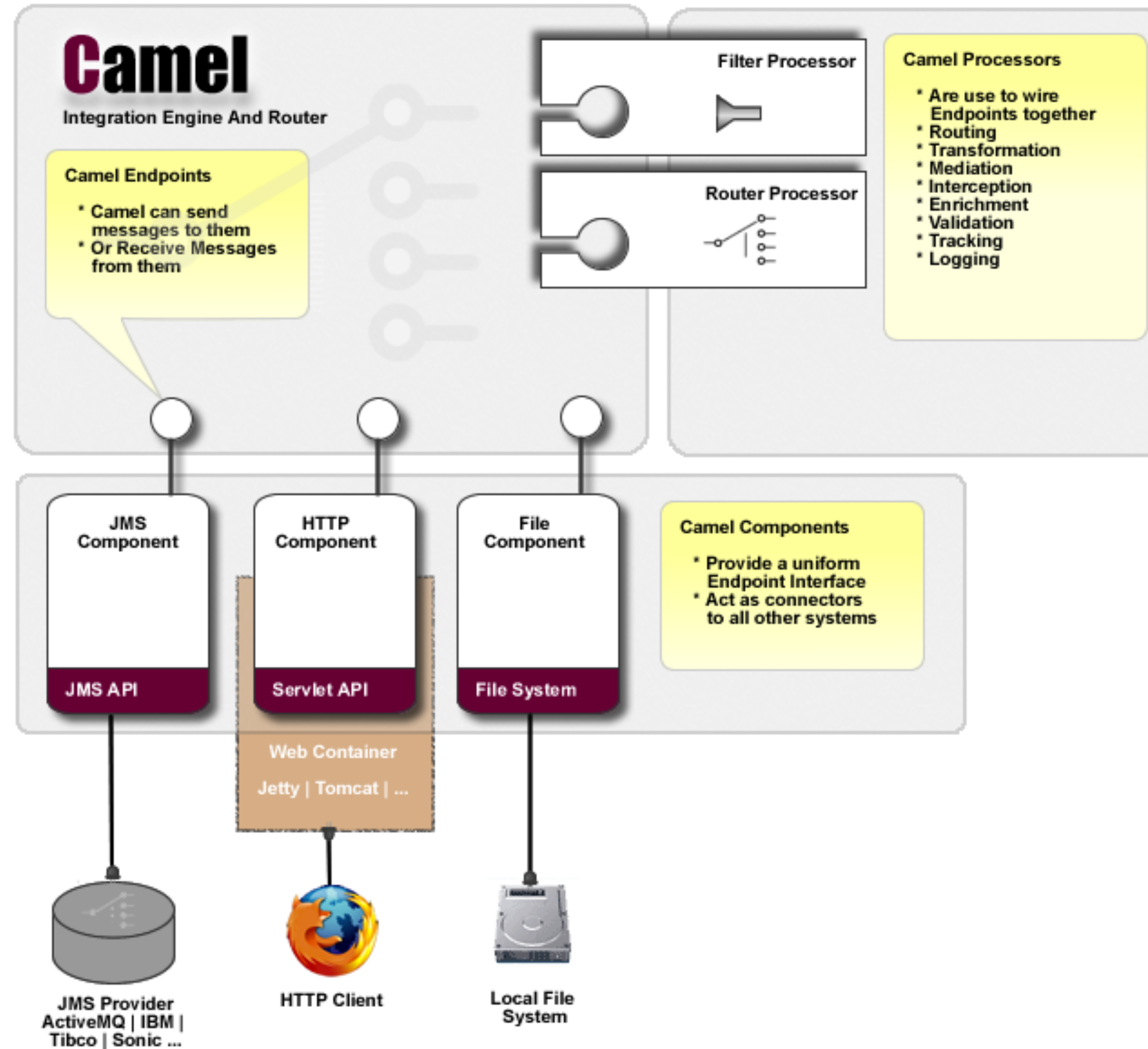
# Fuse is made possible by Open Source





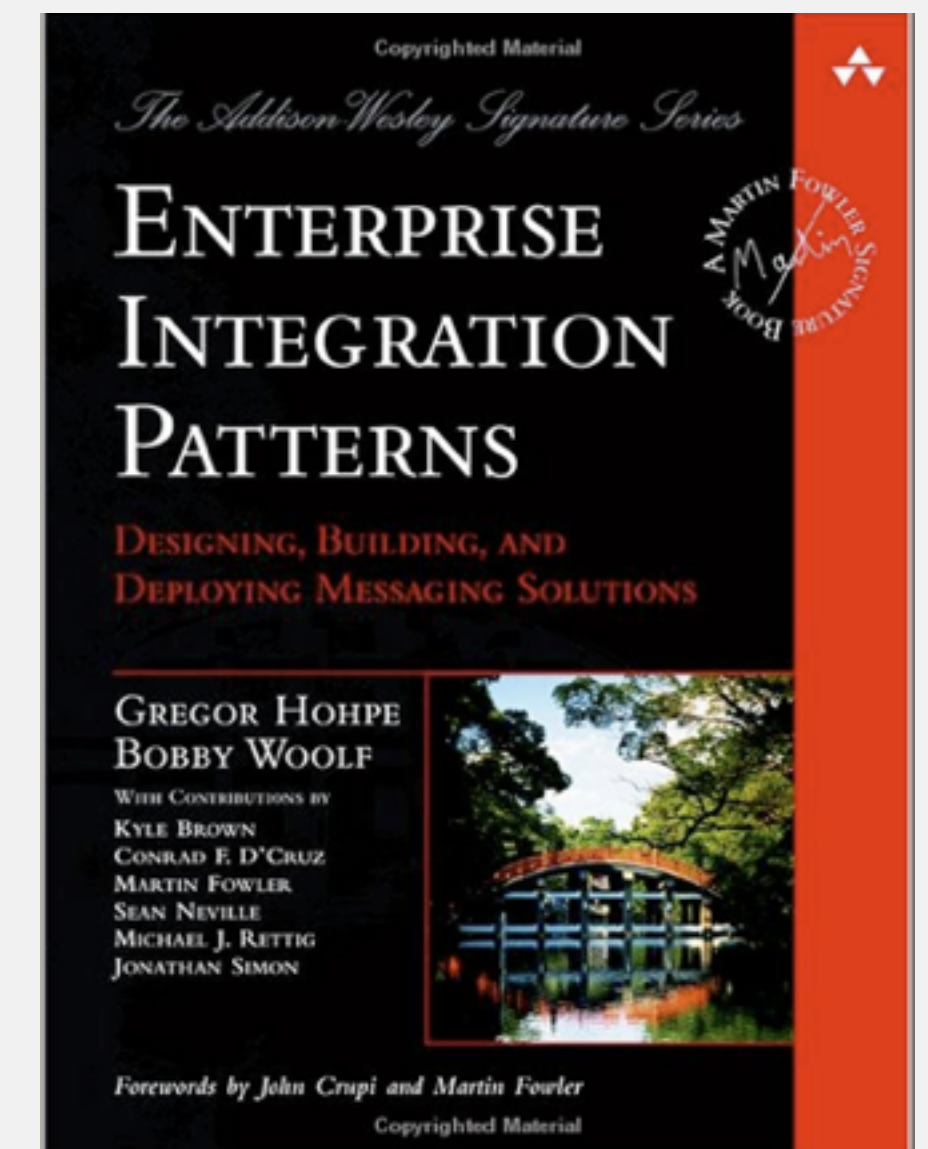


# Apache Camel - Architecture



# Enterprise Integration Patterns

- A Book by Gregor Hohpe and Bobby Woolf
- Patterns and Recipes for common integration problems
- Message Centric
- Used as the basis for all the major integration products
- Should be the the first thing to reference when starting an integration project
- <http://www.eaipatterns.com/>

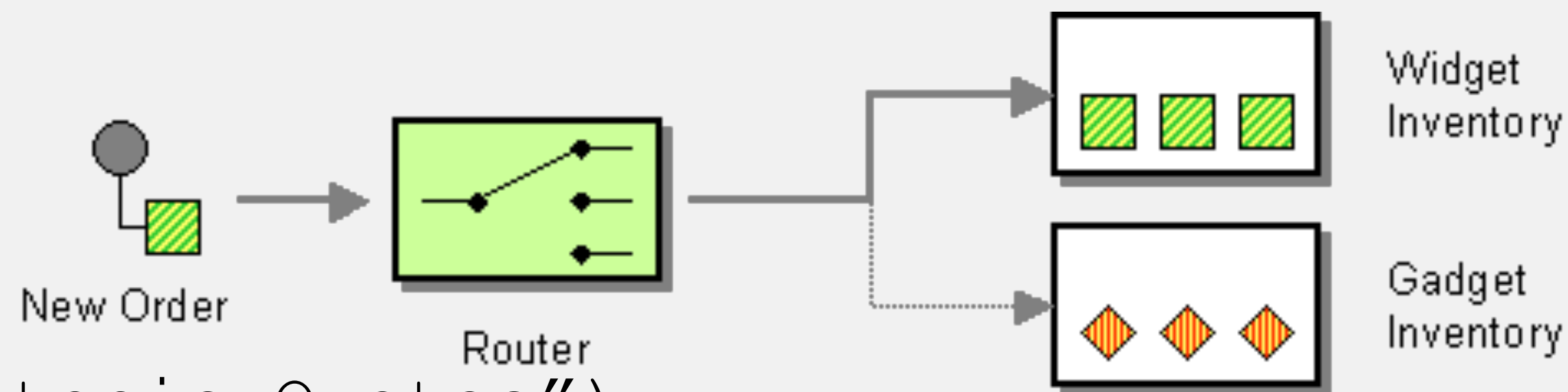




# Apache Camel

Camel provides an embedded DSL (in Java & Spring) for implementing enterprise integration patterns

The DSL uses URIs to define endpoints which are combined by form integration flows



```
from("activemq:topic:Quotes")  
  .filter().xpath("/quote/product = 'widget'")  
    .to("mqseries:WidgetQuotes")  
  .filter().xpath("/quote/product = 'gadget'")  
    .to("mqseries:GadgetQuotes");
```

# What's new in Fuse 6.2

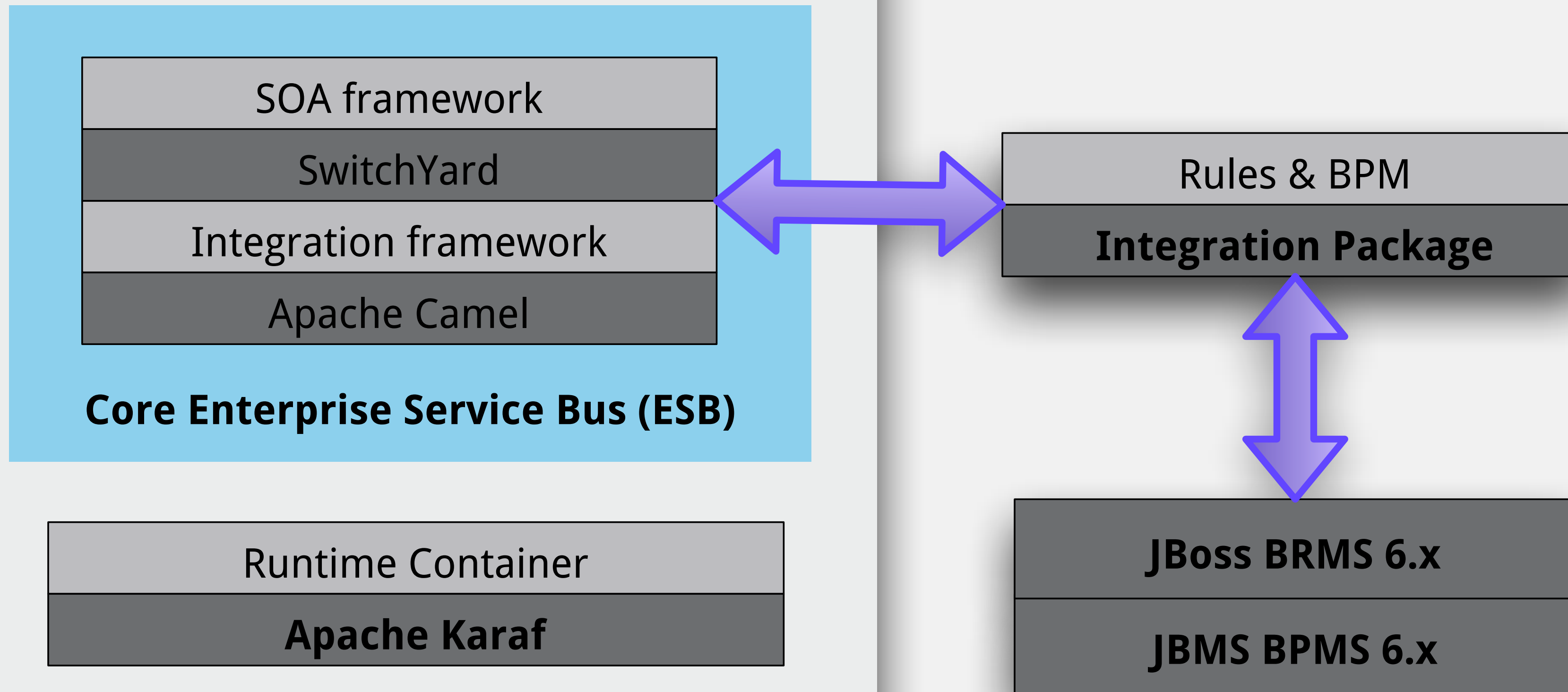
# New Features in Fuse 6.2.0

- Core Integration
- Fabric8
- SwitchYard on Karaf
- Tooling

# Core Integration

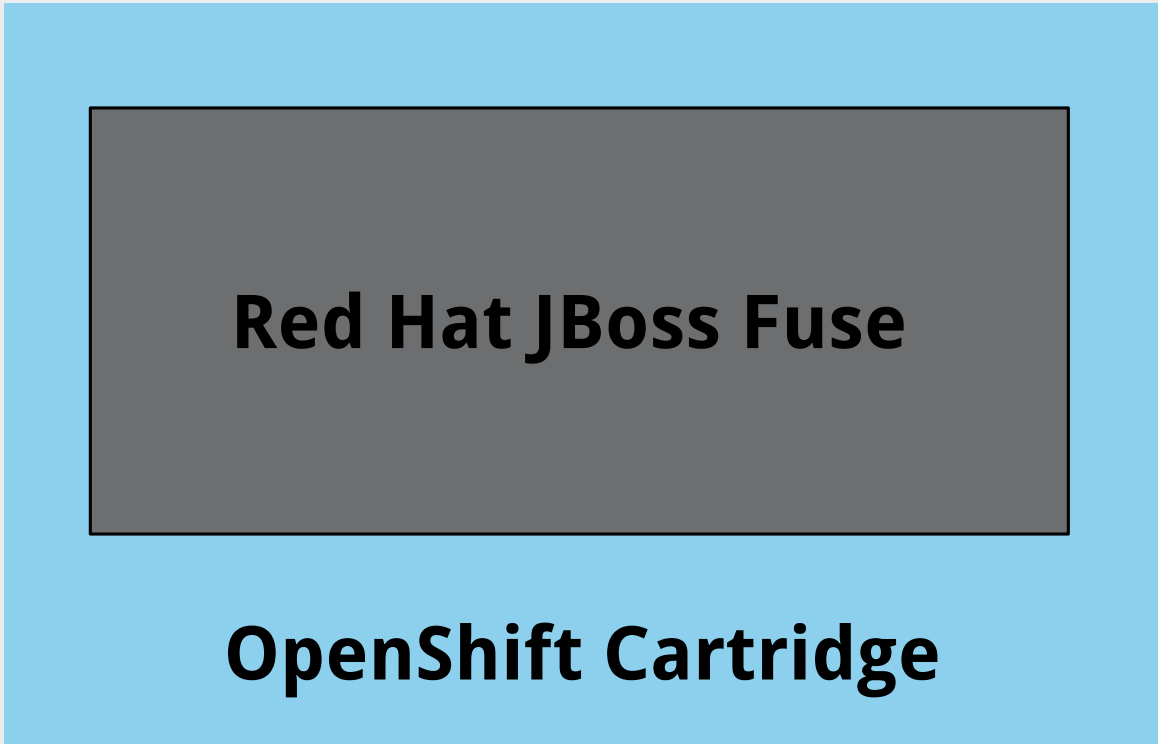
# Fuse Integration Package

## Red Hat JBoss Fuse



# OpenShift Enterprise

## Fuse for xPaaS



The screenshot displays the OpenShift Enterprise console interface. At the top, the navigation bar includes "Applications", "Settings", and "Help", with a user profile "demo" on the right. A progress indicator shows three steps: "1 Choose a type of application", "2 Configure the application", and "3 Next steps".

The main content area provides instructions: "Choose a web programming cartridge or kick the tires with a quickstart. After you create the application you can add cartridges to enable additional capabilities like databases, metrics, and continuous build support with Jenkins." Below this is a search bar with the text "Search by keyword or tag" and a "Browse by tag..." dropdown.

On the right side, there are three key features listed:

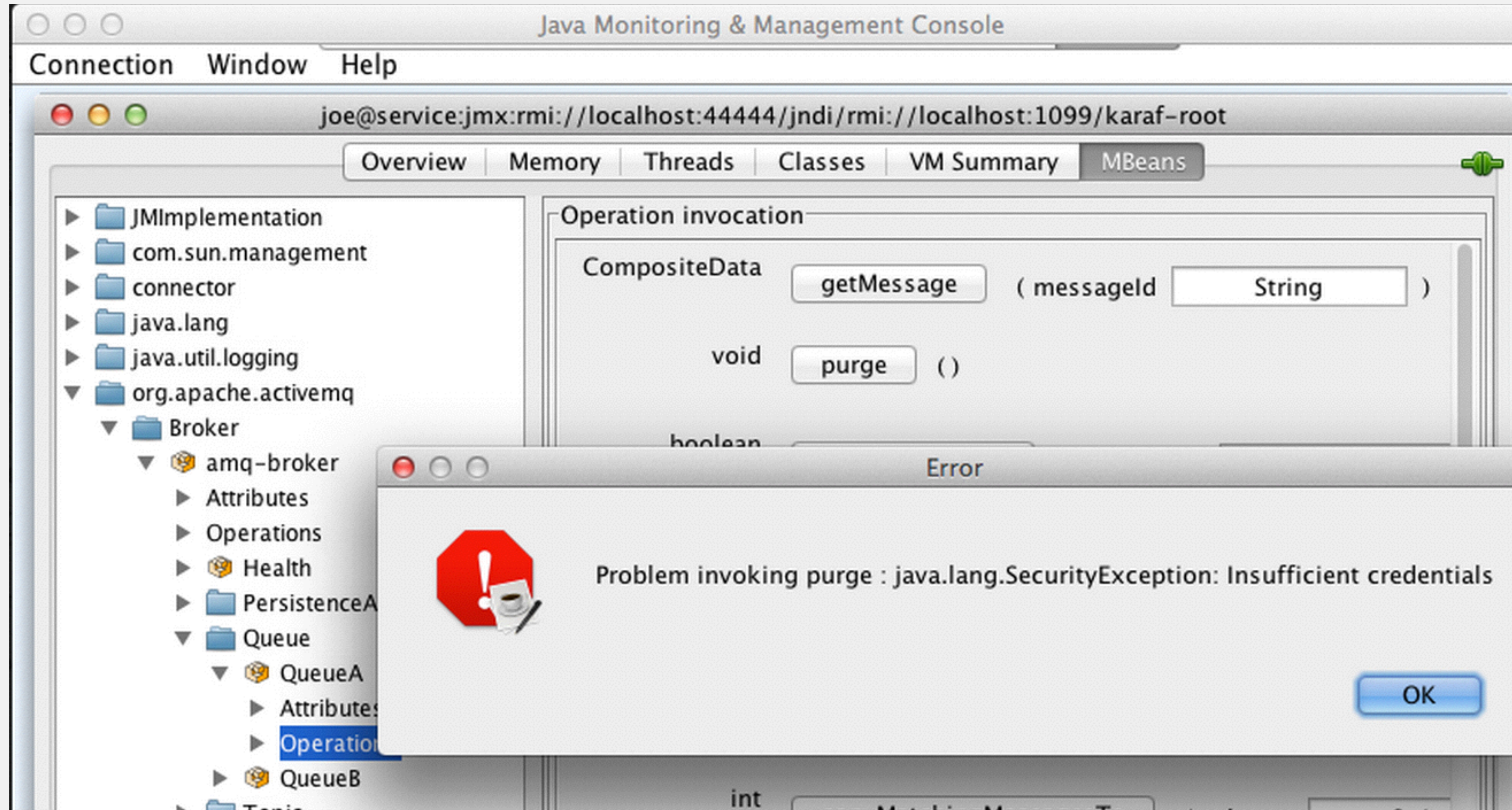
- Cartridge** – A managed runtime for your application.
- QuickStart** – A quick way to try out a new technology with code and libraries preconfigured. You are responsible for updating core libraries for security updates.
- Receives automatic security updates

The main area is divided into two columns of application categories:

- xPaaS** (with a "see all" link):
  - JBoss A-MQ 6.2.0 for xPaaS
  - JBoss Enterprise Application Platform 6 (JAVA EE 6)
  - JBoss Fuse 6.2.0 for xPaaS
- Java** (with a "see all" link):
  - Tomcat 6 (JBoss EWS 1.0) (TOMCAT6)
  - Tomcat 7 (JBoss EWS 2.0) (TOMCAT7)
- PHP** (with a "see all" link):
  - PHP 5.3



# New Karaf Feature: RBAC



# Karaf RBAC: Roles

- *etc/user.properties* - Maps roles to users:

```
$ cat etc/users.properties  
admin=password,Operator, Maintainer, Deployer, \  
Auditor, Administrator, SuperUser
```

- *You can now have Groups assigned roles, and then just assign the group to a user*
- *Uses that same seven predefined user roles EAP defines: Monitor, Operator, Maintainer, Deployer, Auditor, Administrator, and SuperUser.*

# Karaf RBAC: JMX Access Control

- *etc/jmx.acl.\*.cfg*

```
$ cat etc/jmx.acl.java.lang.Memory.cfg  
gc = Deployer, Auditor, Administrator, SuperUser
```

- *Flexible operation matching syntax to be as specific as needed.*

```
$ cat etc/jmx.acl.org.apache.activemq.Broker._.Topic.cfg  
set* = Deployer, Auditor, Administrator, SuperUser  
browse* = Monitor, Operator, Maintainer, Deployer, Auditor, Administrator, SuperUser  
resetStatistics = Deployer, Auditor, Administrator, SuperUser  
sendTextMessage* = Deployer, Auditor, Administrator, SuperUser
```

- *Runtime access checking? Use the "org.apache.karaf:type=security,area=jmx,name=root" MBean and its canInvoke methods.*

# Karaf RBAC: Shell Control

- *etc/org.apache.karaf.command.acl.\*.cfg*

```
$ cat etc/org.apache.karaf.command.acl.osgi.cfg
bundle-level = Deployer, Auditor, Administrator, SuperUser
bundle-level[/.*[-][f].*/] = Administrator,SuperUser
bundle-services = Monitor, Operator, Maintainer,Deployer, Auditor, Administrator
bundle-services[/.*[-][f].*/] = Administrator,SuperUser
... .
```

- *One config file per 'command scope'*

# New Karaf Features

- *jdbc: install/manage DataSourcees*
- *jpa: hibernate*
- *cdi: weld*

# New Camel Components

- *camel-sap*
- *camel-salesforce*
- *camel-linkedin*
- *camel-ahc-ws*
- *camel-box*
- *camel-dropbox*
- *camel-metrics*
- *camel-netty4*
- *camel-olingo2*
- *camel-openshift*
- *camel-google-drive*
- *camel-schematron*
- *camel-rest*

# New Camel Features

- *REST DSL*
- *Enhanced Documentation*
- *Swagger Support*
- *Camel API Component Framework*

```
protected RouteBuilder createRouteBuilder() throws Exception {
    return new RouteBuilder() {
        @Override
        public void configure() throws Exception {
            rest("/say")
                .get("/hello").to("direct:hello")
                .get("/bye").consumes("application/json").to("direct:bye")
                .post("/bye").to("mock:update");

            from("direct:hello")
                .transform().constant("Hello World");
            from("direct:bye")
                .transform().constant("Bye World");
        }
    };
}
```



```
<camelContext xmlns="http://camel.apache.org/schema/spring">
  <rest path="/say">
    <get uri="/hello">
      <to uri="direct:hello"/>
    </get>
    <get uri="/bye" consumes="application/json">
      <to uri="direct:bye"/>
    </get>
    <post uri="/bye">
      <to uri="mock:update"/>
    </post>
  </rest>
  <route>
    <from uri="direct:hello"/>
    <transform>
      <constant>Hello World</constant>
    </transform>
  </route>
  <route>
    <from uri="direct:bye"/>
    <transform>
      <constant>Bye World</constant>
    </transform>
  </route>
</camelContext>
```

# New ActiveMQ Features

- *Support for anonymous style producers in AMQP*
- *Load Camel routes dynamically*
- *Export/Import destinations created at runtime*
- *CLI command to create destinations*
- *Improved support for MQTT 3.1.1*
  
- *New AMQP - JMS, Python and C++ clients*

# New CXF Features

- *Streaming (StAX-based) WS-Security impl in WSS4J 2.0.0.*
- *Complete JAX-RS 2.0 Impl*
- *Netty based HTTP servers and clients*
- *WebSocket based transport*

# Project Version Alignment

<b>Fuse</b>	6.1.0	6.2.0
<b>Karaf</b>	2.3.0	2.4.0
<b>Camel</b>	2.12.0	2.15.0
<b>ActiveMQ</b>	5.9.0	5.11.0
<b>CXF</b>	2.7.0	3.0.2
<b>Fabric8</b>	1.0.0	1.2.0
<b>HawtIO</b>	1.2	1.5
<b>Switch Yard</b>	N/A	2.0

# Added Support For

## *JVMs:*

- *Java 8*
- *HP-UX I Ii HP JVM 1.7*

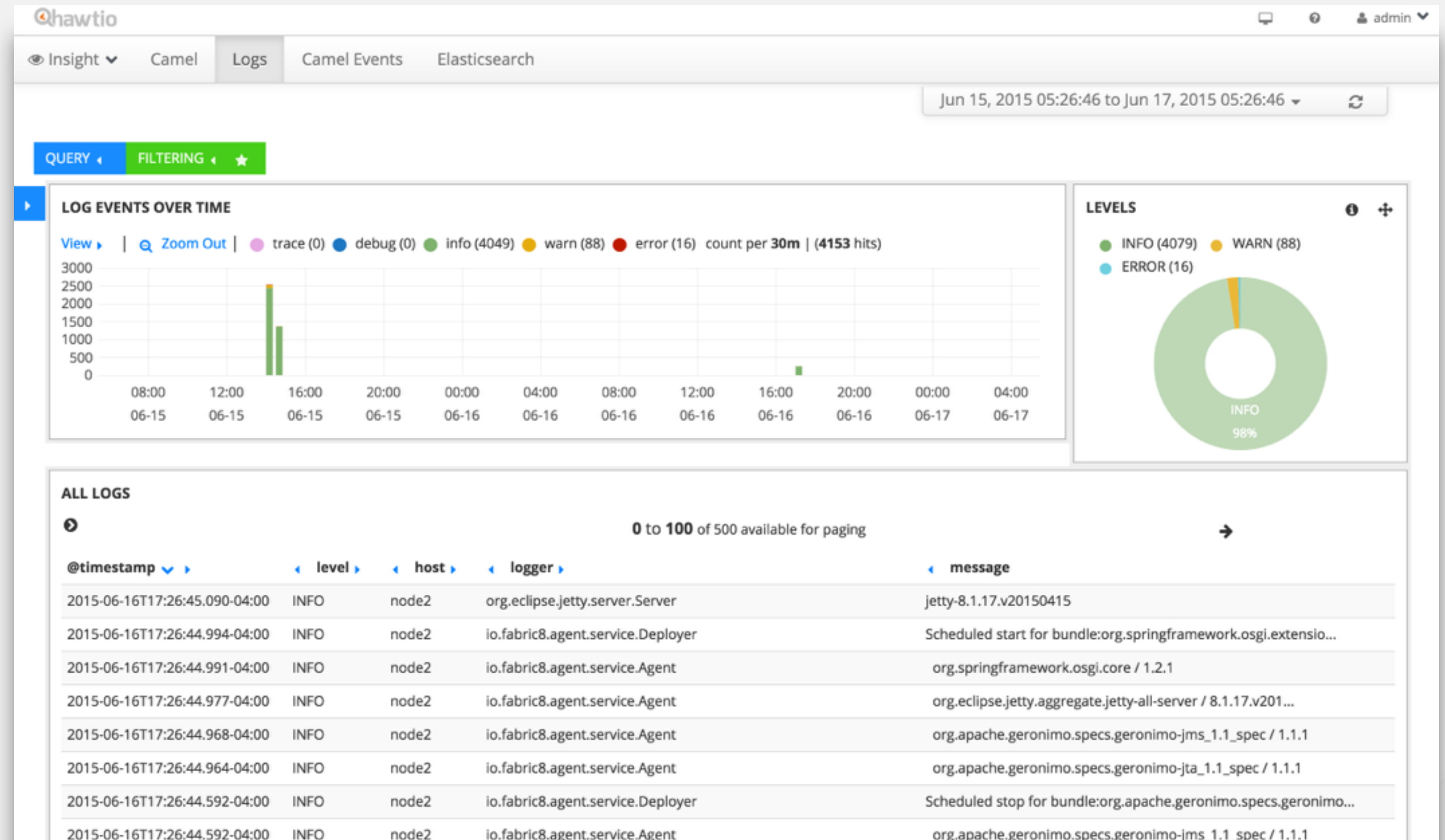
## *Databases:*

- *Oracle I I g - Oracle JDBC Driver v I I*
- *MySQL 5.1 - MySQL Connector / J5*
- *MySQL 5.5 - MySQL Connector / J5*
- *Microsoft SQL Server 2008 - MSSQL Server JDBC Driver 3*
- *PostgreSQL 8.4 - JDBC 4 Postgresql Driver, Version 8*
- *PostgreSQL 9.1 - JDBC 4 Postgresql Driver, Version 8*

# Fabric8 Enhancements

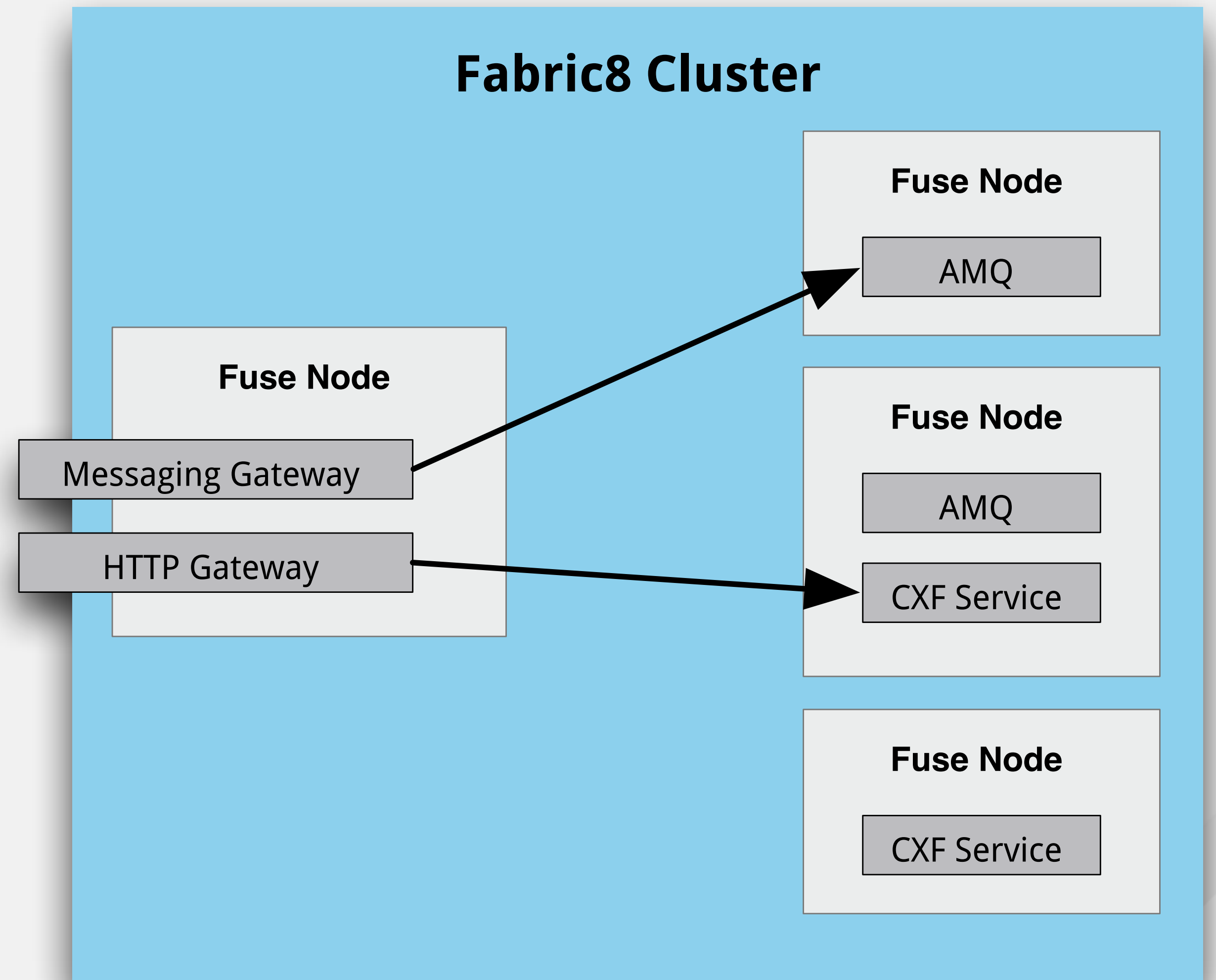
# Fabric8 Insight

- *Centralized Logging*
- *Centralized Metrics Collection: CXF and Camel*
- *Implemented with Elastic Search: Data is replicated and partitioned.*
- *Out of Tech Preview*



# Fabric8 Gateway

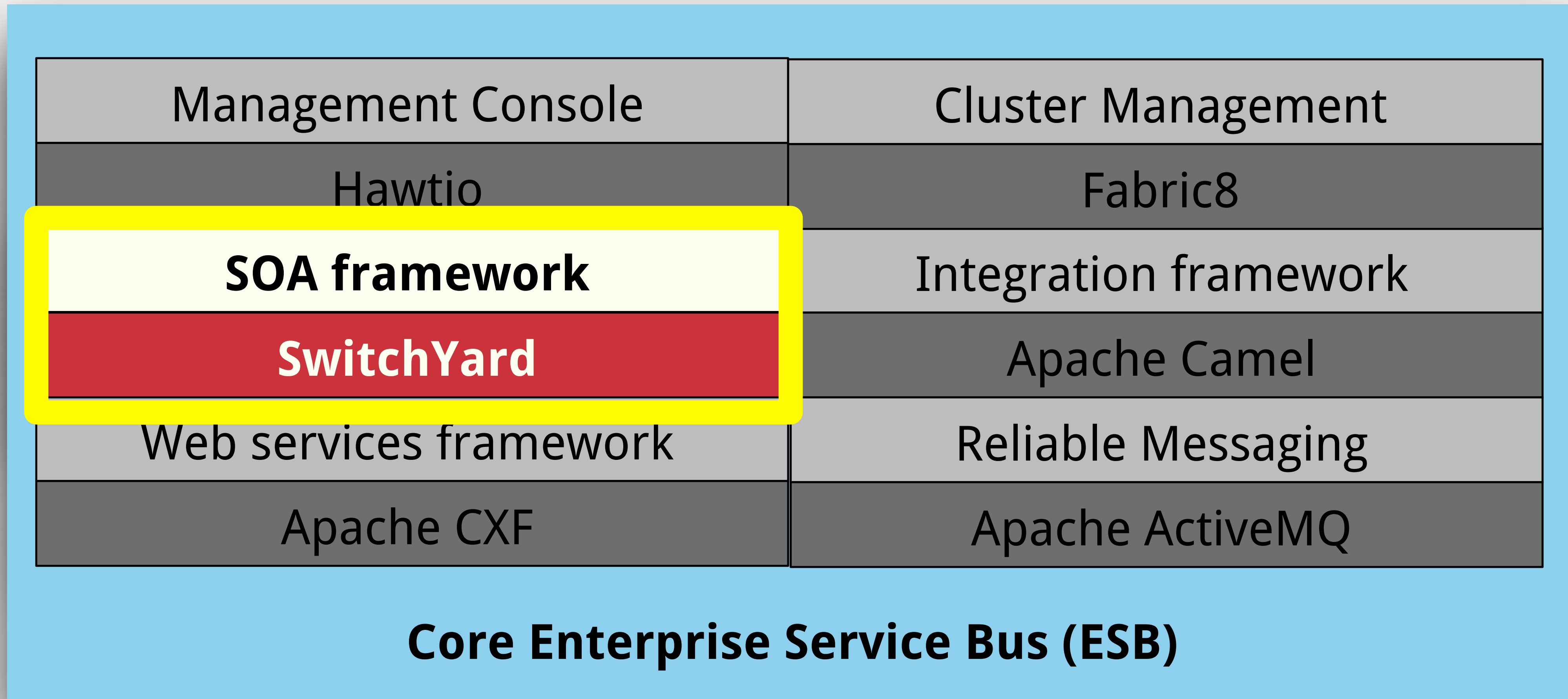
- *Messaging Gateway detects client protocol*
- *Can use virtual hosting to direct messaging connections to groups*
- *Host Name routing for Openwire, WebSocket, and STOMP protocols*
- *WebSockets and SSL supported*





# SwitchYard on Karaf

# SwitchYard on Karaf (Tech Preview)



# SwitchYard

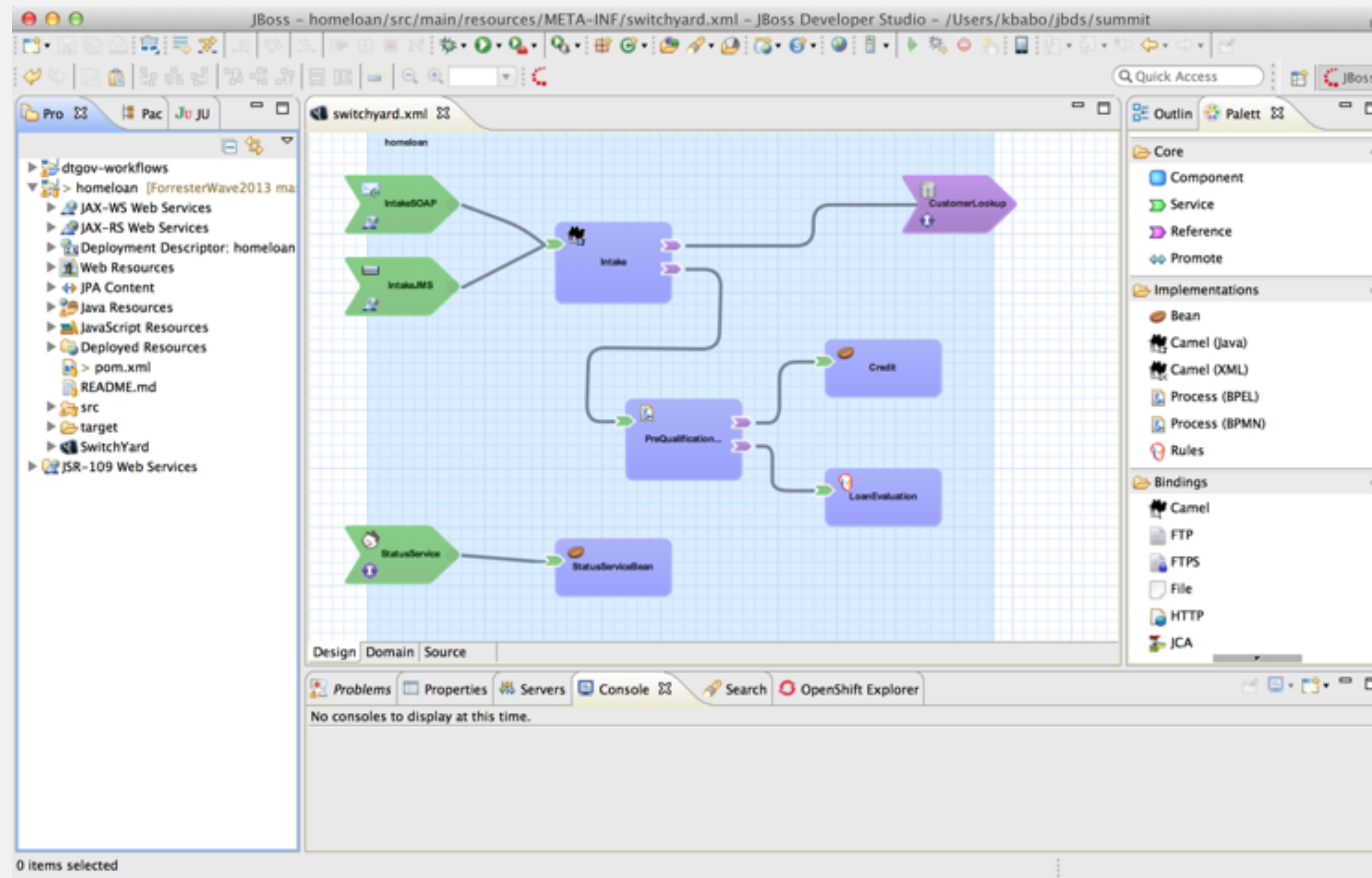
Structured development framework for integration applications

Built on Apache Camel and Java EE

Using service-oriented principles to build scalable, maintainable applications



# Structured Development Environment



# SwitchYard 2.0

- *Karaf support*
  - *Runtime*
  - *Tooling*
- *Improved integration with Drools and jBPM*
  - *Maven resolution of KIE artifacts*
  - *BPM remote client*
- *Camel*
  - *Atom, RSS, SAP, HL7, Bindy, MQTT, XQuery, Dozer*
- *Debugger*

# Tooling Updates

# Fuse Tooling for JBoss Developer Studio

- *Usability*
  - *Extensible, component-aware palette*
  - *Component-specific property sheets*
  - *Automatic injection of Maven dependencies*
- *Productivity*
  - *Server Adapters/Deployment*
  - *Visual Debugger*
- *Data Transformation Tooling*

# Demo Time!

The screenshot displays the Eclipse IDE interface for a Fuse Integration project. The main workspace shows a Camel context diagram with the following components:

- Input endpoint: `file:src/data?noo...`
- Router: `choice`
- Routes:
  - Route 1: `when /person/city...` → `log` → `file:target/messa...`
  - Route 2: `otherwise` → `log` → `file:target/messa...`

The Properties view at the bottom shows the configuration for the `file:src/data?noo...` endpoint:

Path	General	Consumer	Producer
Auto Create	<input checked="" type="checkbox"/>		
Buffer Size	<input type="text" value="131072"/>		
Charset	<input type="text"/>		
Copy And Delete On Rename Fail	<input checked="" type="checkbox"/>		
Exchange Pattern	<input type="text" value="InOnly"/>		
File Name	<input type="text"/>		
Flatten	<input type="checkbox"/>		
Rename Using Copy	<input type="checkbox"/>		
Synchronous	<input type="checkbox"/>		

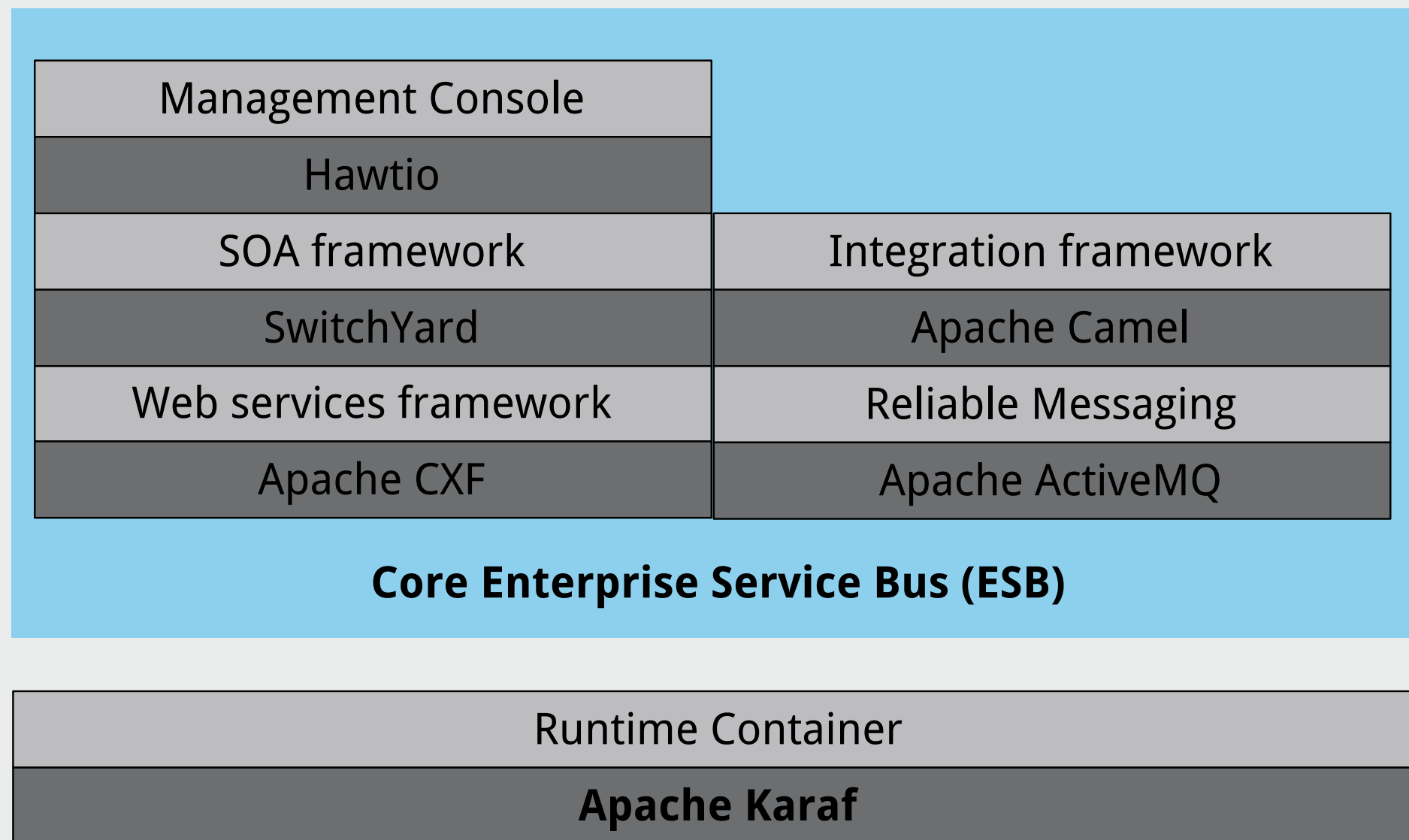
The Messages View at the bottom right is currently empty.



# Where's Fuse going post 6.2?

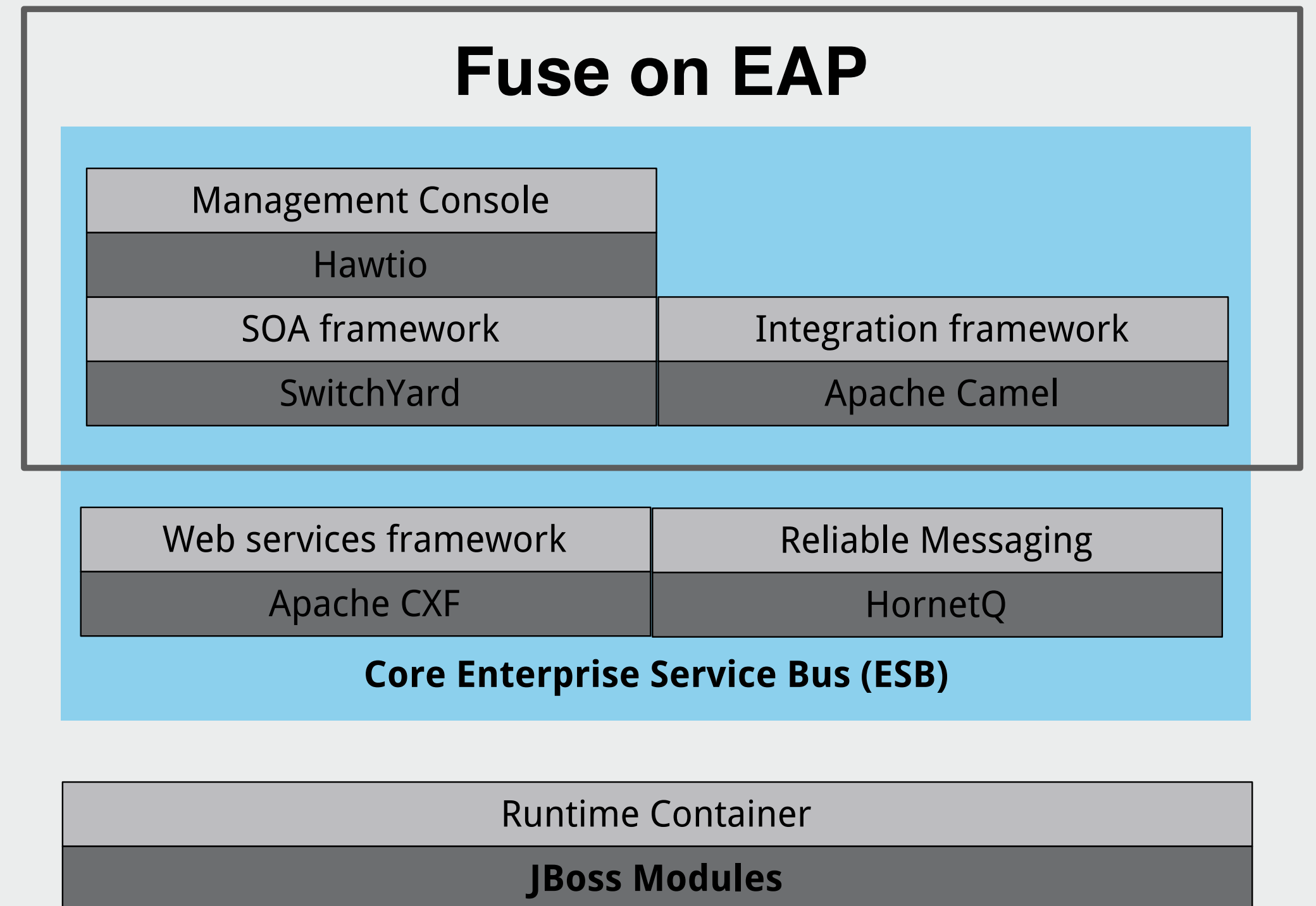
# Fuse for EAP 6.2.1

## Red Hat JBoss Fuse



## Fuse on EAP

**JBoss EAP**



# Camel on EAP

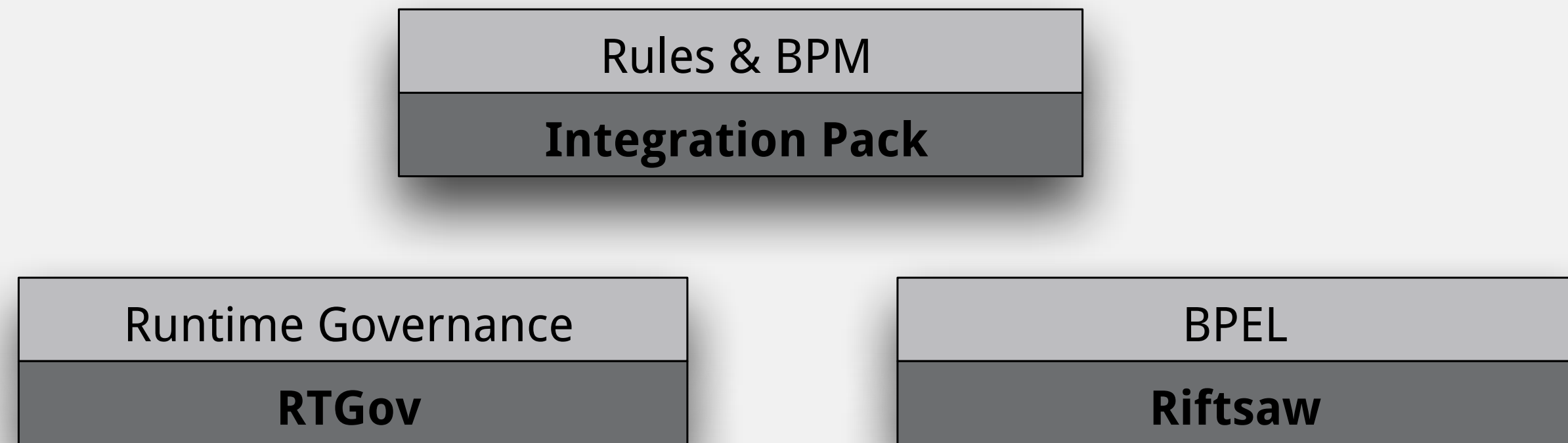
- *Camel Subsystem*
  - *Injects camel deps into user's deployments*
- *Camel Modules*
  - *Apps don't need to package camel libs*

# Camel on EAP

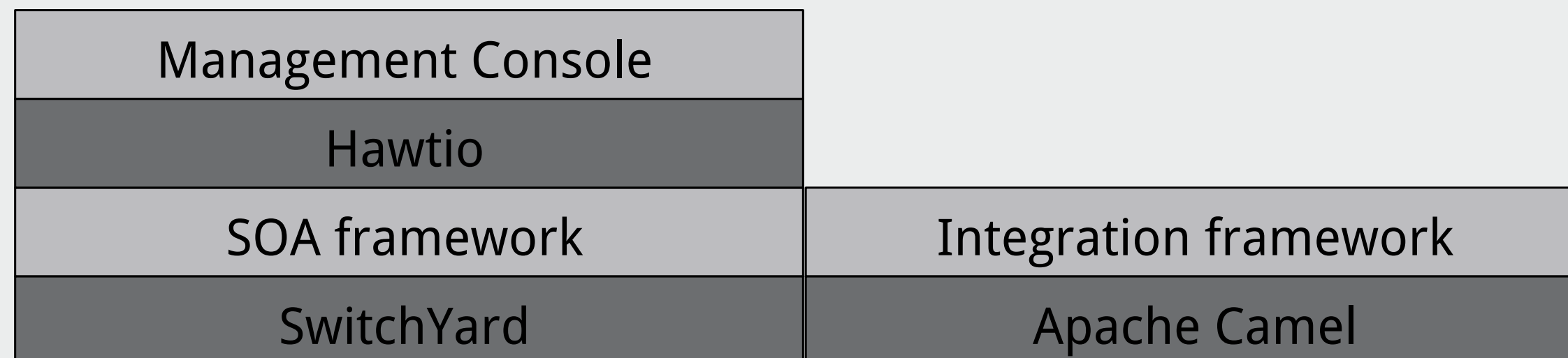
## *Supported Camel Components*

activemq	ejb	jmx	protobuf	sql
atom	flatpack	jpa	quartz2	swagger
bindy	ftp	lucene	restlet	tagsoup
castor	h17	mail	rss	velocity
cdi	http	mina2	salesforce	weather
crypto	http4	mqtt	saxon	xmlbeans
csv	jackson	mvel	script	xmlsecurity
cxfr	jaxb	netty4	servlet	xstream
dozer	jms	ognl	soap	zipfile

# Fuse for EAP 6.2.1 Optional Packages



## Fuse on EAP



RED HAT  
**SUMMIT**

LEARN. NETWORK.  
EXPERIENCE OPEN SOURCE.