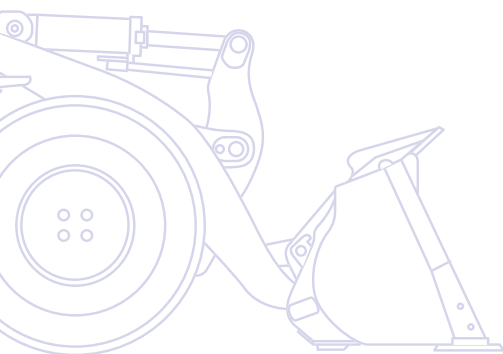


# KOMATSU

**WA**  
**430**



## Wheel Loader **WA430-6**



**ENGINE POWER**  
173 kW / 232 HP @ 2.100 rpm

**OPERATING WEIGHT**  
19.100 - 20.395 kg

**BUCKET CAPACITY**  
3,3 - 4,2 m<sup>3</sup>

# Walk-Around

Efficient and productive, the WA430-6 wheel loader features Komatsu's advanced power-train technology and a top-performance engine that delivers high power and torque at low revs. Whatever the job, the WA430-6 will handle it with excellent fuel efficiency thanks to an outstanding tractive force and Komatsu's Closed Load Sensing System (CLSS) hydraulics. Its exclusive SpaceCab™ offers unrivalled operator comfort and an excellent view of the bucket and wheels. Reliability, economy, safety and ease of service – the WA430-6 sets new standards for this class of wheel loaders.

## High productivity & low fuel consumption

- High-torque and low-consumption ecot3 Komatsu engine
- Meets EU Stage IIIA and EPA Tier III
- High-capacity torque converter
- Torque converter lock-up (option)
- Automatic transmission with mode selection



## Excellent stability and manoeuvrability

- Superior dumping height and reach
- Wide tread and long wheelbase
- Boom suspension system for minimum spillage
- Komatsu CLSS hydraulic system

# WA430-6

## ENGINE POWER

173 kW / 232 HP @ 2.100 rpm

## OPERATING WEIGHT

19.100 - 20.395 kg

## BUCKET CAPACITY

3,3 - 4,2 m<sup>3</sup>



## First-class operator comfort

- Two-door SpaceCab™
- Outstanding 360° visibility
- Deluxe heated, air-suspended driver seat
- Large armrest and adjustable console
- Electronically controlled air conditioning



## Easy maintenance

- Radiator with auto reversible fan speeds up cleaning
- Factory fitted automatic lubrication system
- Large gull-wing doors for easy access to service points
- Equipment Management and Monitoring System (EMMS)
- Robust components with a long service life



**KOMTRAX**

Komatsu Satellite  
Monitoring System

## Simple & convenient handling

- Smooth ergonomic hydraulic control
- Multi-function lever (option)
- Intelligent gas pedal
- Joystick steering (option)





## Universal bucket

This type of bucket is impressive because of its excellent penetration and loosening properties and its good material holding properties. This universal bucket can be equipped with flush mount adapters and interchangeable teeth.



## Earthmoving bucket

The earthmoving bucket with a one-piece bucket bottom is suited both for earthworks and loading cohesive material. The slanted sides give powerful penetration. It is equipped either with flush mount adapters and interchangeable teeth or also with a rear removable edge.



## Stock pile bucket

The stock pile bucket is the right solution for handling loose and relatively light materials. The straight sidewalls ensure a high bucket capacity, the rear edge makes levelling and cleaning up jobsites easy. This stock pile bucket can be equipped with flush mount adapters and interchangeable teeth or a bolt-on cutting edge.



## Heavy duty bucket

The ideal bucket for hard and abrasive conditions. Increase profits by protecting the bucket investment and reduce repair works. Komatsu offers total bucket protection by using highly wear resistant exchangeable parts. A bolt-on teeth system reduces welding on the bucket and prevents loss of teeth.



## Hydraulic quick coupler

The WA430-6 can change attachments in a matter of seconds with a market compatible or HD wedge type quick coupler. With the wedge type quick coupler, featuring a unique and innovative design, the offset to the original connection points is reduced to a minimum. Thus, lifting forces remain almost the same compared to a direct mounted bucket.



## A comprehensive range of attachments

The log grapple: With its sturdy structure and its great hydraulic power and a special tilting cylinder, the WA430-6 is also perfectly suited to work in the timber industry. The robust design of the lifting frame and axles ensures maximum durability.

# Specifications

## ENGINE

Model ..... Komatsu SAA6D114E-3  
Common rail direct injection, water-cooled, emissionised, turbocharged, after-cooled diesel

Engine power  
at rated engine speed ..... 2.100 rpm  
ISO 14396 ..... 173 kW / 232 HP

Max. torque / engine speed ..... 1.040 Nm / 1.500 rpm

No. of cylinders ..... 6

Bore x stroke ..... 114 x 135 mm

Displacement ..... 8,27 ltr

Fan drive type ..... Hydraulic

Lubricating system ..... Gear pump, water-cooled oil cooler, piston cooling nozzles

Filter ..... Main-flow filter with water separator

Air-filter type ..... Dry-air filter with automatic dust emission and preliminary purification including a dust display

## TRANSMISSION

Type ..... Automatic powershift transmission

Torque converter ..... One-stage, one-phase, 3-element

### Speeds in km/h (with 23.5 R25 tyres)

Gear	1.	2.	3.	4.
Forward	7,0	12,3	21,6	37,2
with torque converter lock-up	-	-	22,5	39,0
Reverse	7,6	12,9	23,0	39,0
with torque converter lock-up	-	-	24,0	39,0

## CHASSIS AND TYRES

System ..... 4-wheel drive

Front axle ..... Komatsu HD axle, semi-floating, (LSD-differential optional)

Rear axle ..... Komatsu HD axle, semi-floating, 26° swing angle (LSD-differential optional)

Differential ..... Straight bevel gear pair

Final drive ..... Planetary gear in an oil bath

Tyres ..... 23.5 R25

## SERVICE REFILL CAPACITIES

Cooling system ..... 34 ltr

Fuel tank ..... 325 ltr

Engine oil ..... 32 ltr

Hydraulic system ..... 139 ltr

Front axle ..... 49 ltr

Rear axle ..... 40 ltr

Torque converter and transmission ..... 54 ltr

## BRAKES

Operating brakes ..... Hydraulically actuated, wet multi-disc brakes on all wheels

Parking brake ..... Wet multi-disc

Emergency brake ..... Uses the parking brake

## HYDRAULIC SYSTEM

Type ..... Komatsu CLSS (Closed Centre Load Sensing System)

Hydraulic pump ..... Variable piston pump

Working pressure ..... 320 bar

Maximum pump flow ..... 205,5 ltr/min

No. of hydraulic/bucket cylinders ..... 2/1

Type ..... Double-action

Bore diameter x stroke

Boom cylinder ..... 135 x 776 mm

Bucket cylinder ..... 150 x 535 mm

Hydraulic cycle with rated load bucket filling

Raise time ..... 6,5 s

Lowering time (empty) ..... 3,3 s

Dumping time ..... 1,8 s

## STEERING SYSTEM

System ..... Articulated frame steering

Type ..... Completely hydraulic power steering

Steering angle to either side ..... 37° [40° max.]

Steering pump ..... Variable piston pump

Working pressure ..... 250 bar

Pumping capacity ..... 137,7 ltr/min

No. of steering cylinders ..... 2

Type ..... Double-action

Bore diameter x stroke ..... 75 x 442 mm

Smallest turn (outer edge of the tyre 23.5 R25) ..... 6.025 mm

## CABIN

Two-door SpaceCab™ in conformity with ISO 3471 with ROPS (roll over protective structure) in conformity with SAE J1040c and FOPS (falling object protective structure) in conformity with ISO 3449. The air-conditioned pressurised cabin is mounted upon hydrobearings and is noise dampened.

## ENVIRONMENT

Engine emissions ..... Fully complies with EU Stage IIIA and EPA Tier III exhaust emission regulations

Noise levels

LwA external ..... 107 dB(A) (2000/14/EC Stage II)

LpA operator ear ..... 72 dB(A) (ISO 6396 dynamic test)

Vibration levels (EN 12096:1997)\*

Hand/arm ..... ≤ 2,5 m/s<sup>2</sup> (uncertainty K = 0,48 m/s<sup>2</sup>)

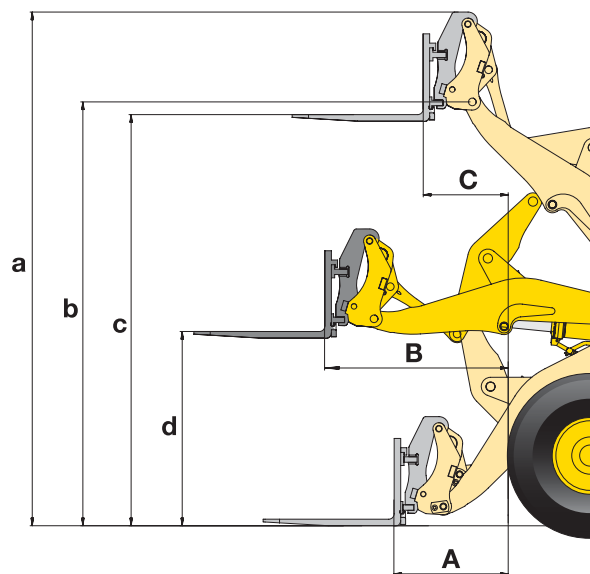
Body ..... ≤ 0,5 m/s<sup>2</sup> (uncertainty K = 0,234 m/s<sup>2</sup>)

\* for the purpose of risk assessment under directive 2002/44/EC, please refer to ISO/TR 25398:2006.

# Dimensions & Performance Figures

## FORK TINES

Sales code		C53
Fork tine length	mm	1.500
A Max. reach at ground level	mm	1.140
B Max. reach	mm	1.780
C Max. reach at max. stacking height	mm	865
a Max. height fork-carrier	mm	4.995
b Hinge pin height	mm	4.155
c Max. stacking height	mm	3.985
d Height of forks at maximum reach	mm	1.875
Max. tipping load, straight	kg	10.585
Max. tipping load, articulated	kg	9.512
Max. payload as per EN 474-3, 80%	kg	7.000
Max. payload as per EN 474-3, 60%	kg	5.720
Weight in working order with fork tines	kg	18.500

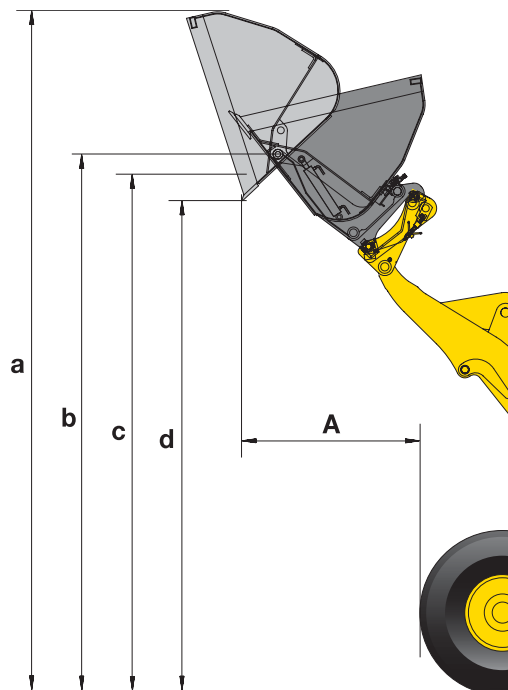


## HIGH-DUMP BUCKET

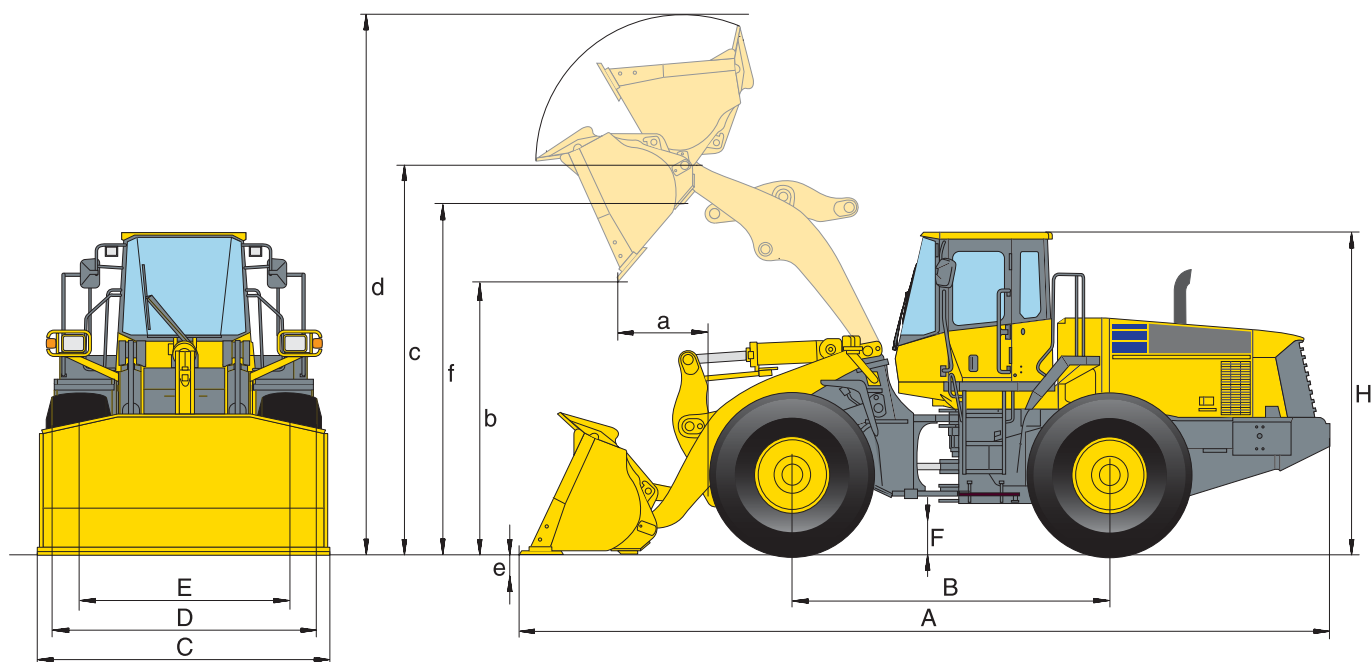
Type		A	B
Sales code		Q39	Q41
Bucket capacity (heaped, ISO 7546)	m <sup>3</sup>	6,5	5,2
Material density	t/m <sup>3</sup>	0,8	1,0
Bucket width	mm	3.000	3.000
Bucket weight without teeth	kg	2.100	2.420
A Reach at 45°	mm	1.830	1.775
a Height top edge of bucket	mm	6.710	6.490
b Hinge pin height	mm	5.175	5.150
c Max. loading height at 45°	mm	4.990	4.970
d Dump height at 45°	mm	4.730	4.740

Type A: dump cylinders located inside bucket

Type B: dump cylinders located outside bucket



# Dimensions & Performance Figures



## MEASUREMENTS AND WORKING SPECIFICATIONS

Bucket type	Universal				Stockpile			
		with teeth	with BOC	with teeth	with BOC	w/o teeth	with teeth	with BOC
Bucket capacity (heaped, ISO 7546)	m <sup>3</sup>	<b>3,3</b>	<b>3,45</b>	<b>3,6</b>	<b>3,75</b>	<b>3,6</b>	<b>3,6</b>	<b>3,75</b>
Sales code		3948 C02	C03	C12	C13	C35	C36	C37
Material density	t/m <sup>3</sup>	1,8	1,7	1,65	1,55	1,6	1,6	1,5
Bucket weight	kg	1.750	1.800	1.763	1.833	1.735	1.902	1.962
Static tipping load, straight	kg	14.765	14.630	14.725	14.550	14.645	14.425	14.255
Static tipping load, 37° articulated	kg	13.215	13.085	13.175	13.010	13.110	12.890	12.725
Break-out force hydraulic	kN	164	154	159	149	155	155	146
Lifting capability hydr. at ground level	kN	192	190	190	188	190	190	188
Operating weight (without add. counterw.)	kg	19.100	19.145	19.120	19.180	19.080	19.250	19.310
Turning radius at corner of tyres (40°)	mm	6.025	6.025	6.025	6.025	6.025	6.025	6.025
Turning radius at bucket edge (40°)	mm	6.730	6.675	6.740	6.695	6.655	6.745	6.700
a Reach at 45°	mm	1.340	1.180	1.365	1.210	1.195	1.380	1.330
b Dump height at 45°	mm	2.815	2.935	2.795	2.905	2.960	2.775	2.885
c Hinge pin height	mm	4.155	4.155	4.155	4.155	4.155	4.155	4.155
d Height top edge of bucket	mm	5.555	5.555	5.670	5.670	5.535	5.535	5.535
e Digging depth	mm	160	190	160	190	160	160	190
f Max. loading height at 45°	mm	3.860	3.860	3.860	3.860	3.860	3.860	3.860
A Overall length, bucket grounded	mm	8.690	8.515	8.735	8.560	8.485	8.760	8.585
B Wheelbase	mm	3.300	3.300	3.300	3.300	3.300	3.300	3.300
C Bucket width	mm	2.990	3.000	2.990	3.000	2.990	2.990	3.000
D Width over tyres	mm	2.885	2.885	2.885	2.885	2.885	2.885	2.885
E Track width	mm	2.280	2.280	2.280	2.280	2.280	2.280	2.280
F Ground clearance	mm	450	450	450	450	450	450	450
H Overall height	mm	3.390	3.390	3.390	3.390	3.390	3.390	3.390

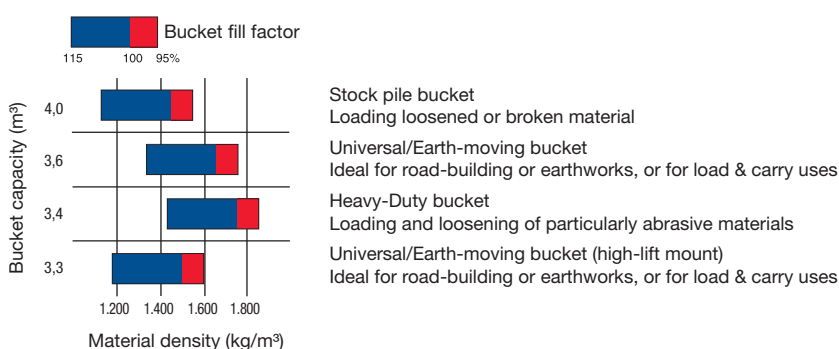
All measurements with tyres 23.5 R25.

Details of dumping heights and reach to cutting edge or bolt-on cutting edge (BOC) or teeth



## CHANGE IN DATA CAUSED BY:

	Add. counterweight (rear)	Add. counterweight (sides)	23.5 R25 XLD D1A L4	23.5 R25 XMINE D2 L5	26.5 R25 XHA L3
Operating weight	+ 325 kg	+ 430 kg	+ 570 kg	+ 720 kg	+ 600
Static tipping load, straight	+ 815 kg	+ 855 kg	+ 425 kg	+ 535 kg	+ 445
Static tipping load, 37° articulated	+ 710 kg	+ 765 kg	+ 385 kg	+ 485 kg	+ 405
Overall length, bucket grounded	+ 140 mm	-	-	-	-
Reach at 45°	-	-	- 30 mm	- 25 mm	- 65 mm
Dump height at 45°	-	-	+ 35 mm	+ 45 mm	+ 55 mm
Width over tyres	-	-	+ 40 mm	+ 35 mm	- 10 mm
Overall height	-	-	+ 35 mm	+ 45 mm	+ 55 mm



## TYPICAL MATERIAL DENSITY – LOOSE (IN kg/m³)

Stockpile <sup>1</sup>			Earthmoving		Heavy Duty		Universal (High-lift) <sup>2</sup>
w/o teeth	with teeth	with BOC	with teeth	with BOC	with teeth	with BOC	w/o teeth
<b>4,0</b>	<b>4,0</b>	<b>4,2</b>	<b>3,4</b>	<b>3,55</b>	<b>3,4</b>	<b>3,5</b>	<b>3,3</b>
C45	C46	C47	C42	C43	C29	C30	C01
1,65	1,6	1,55	1,7	1,6	1,7	1,6	1,5
1.902	2.068	2.124	1.748	1.808	1.980	2.040	1.580
15.805	15.585	15.570	14.660	14.475	14.415	14.235	13.135
14.120	13.900	13.740	13.115	12.945	12.870	12.700	11.700
149	149	141	154	143	164	154	157
187	187	186	192	190	191	190	164
20.175	20.340	20.395	19.905	19.155	19.325	19.390	20.010
6.025	6.025	6.025	6.025	6.025	6.025	6.025	6.025
6.680	6.765	6.720	6.730	6.685	6.725	6.680	6.880
1.170	1.355	1.200	1.345	1.195	1.335	1.180	1.255
2.975	2.790	2.900	2.810	2.920	2.825	2.935	3.500
4.155	4.155	4.155	4.155	4.155	4.155	4.155	4.645
5.770	5.770	5.770	5.535	5.535	5.535	5.535	6.045
160	160	190	160	190	160	190	205
3.860	3.860	3.860	3.860	3.860	3.860	3.860	4.345
8.680	8.955	8.780	8.710	8.535	8.690	8.515	8.950
3.300	3.300	3.300	3.300	3.300	3.300	3.300	3.300
2.990	2.990	3.000	2.990	3.000	2.990	3.000	2.990
2.875	2.875	2.875	2.885	2.885	2.885	2.885	2.885
2.280	2.280	2.280	2.280	2.280	2.280	2.280	2.280
450	450	450	450	450	450	450	450
3.445	3.445	3.445	3.390	3.390	3.390	3.390	3.390

Basalt	1.960
Bauxite, Kaolin	1.420
Earth, dry, ex store	1.510
Earth, wet, excavated	1.600
Gypsum, broken	1.810
Gypsum, crushed	1.600
Granite, broken	1.660
Limestone, broken	1.540
Limestone, crushed	1.540
Gravel, unscreened	1.930
Gravel, dry	1.510
Gravel, dry, 6-50 mm	1.690
Gravel, wet, 6-50 mm	2.020
Sand, dry, loose	1.420
Sand, damp	1.690
Sand, wet	1.840
Sand and clay, loose	1.600
Sand and gravel, dry	1.720
Sandstone	1.510
Slate	1.250
Slag, broken	1.750
Stone, crushed	1.600
Clay, natural	1.660
Clay, dry	1.480
Clay, wet	1.660
Clay and gravel, dry	1.420
Clay and gravel, wet	1.540

1) Measurements with tyres 26.5 R25 & with add. counterweight

2) with add. counterweight



# Wheel Loader

## WA430-6

### Standard and Optional Equipment

#### ENGINE

Komatsu SAA6D114E-3 turbocharged common rail direct injection diesel engine	●
EU Stage IIIA/EPA Tier III compliant	
Fuel filter with water separator	●
Engine cooling fluid corrosion resistor	●
Alternator 60 A/24 V	●
Starter motor 5,5 kW/24 V	●
Batteries 143 Ah/2 × 12 V	●

#### CHASSIS AND TYRES

Heavy-duty axles	●
Front fenders	●
Limited-slip differential (LSD) front and rear	○
Tyres 23.5 R25; 26.5 R25, 750/65 R25	○
Full rear fenders	○

#### SAFETY EQUIPMENT

Emergency steering system	●
Horn	●
Vandalism protection	●
Back-up alarm	●
Battery main switch	●
Handrails on left/right	●
Front screen protective grid	○
Beacon light	○
Electronic anti-theft lock	○
Roof rail	○
Roof rail and step light	○
Rear view camera system	○
Additional convex rear view mirror	○
Optical back-up alarm (strobe light)	○
Back-up alarm (white noise version)	○

#### LIGHTING SYSTEM

2 halogen main headlights	●
2 spotlights at front and rear	●
Reversing light	●
Additional lights front and rear	○
Xenon working lights	○

#### CABIN

Spacious double door driver's cab to DIN/ISO	●
ROPS/FOPS frame according to SAE	●
Air-suspended, heated seat	●
Air conditioner	●
CD radio	●
Hot and cool box	●
All-round tinted glazing	●
Front laminated glass	●
Heated rear window	●
Rear window wiper	●
Sun visor	●
Adjustable steering column	●
12 V power supply	○
Fire extinguisher	○
Sun roller blind	○
Automatic climate control system	○
Super DeLuxe seat	○

#### TRANSMISSION AND BRAKES

Electronically controlled ECMV automatic transmission with mode selector and variable transmission cut-off	●
Working mode selection system	●
Large-capacity torque converter	●
Torque converter lock-up	○
Joystick steering with integrated F/R transmission function, 2-stage	○
20, 25 or 30 km/h speed limitation (not with torque converter lock-up)	○

#### HYDRAULIC SYSTEM

2-spool main control valve	●
PPC fingertip control, two levers	●
Automatic return-to-dig	●
3-spool main control valve	○
PPC control, 1-lever (Multi-function lever) with integrated F/R transmission function	○
Electronic 2-lever control (EPC) including:	
- Bucket stop modulation	○
- Boom stop pre-setting	
- Semiautomatic dig function	
Biodegradable oil for hydraulic system	○

#### SERVICE AND MAINTENANCE

Hydrostat-driven radiator fan with automatic reversing function	●
EMMS (Equipment Management Monitoring System) with self-diagnostic function and maintenance display	●
KOMTRAX™ - Komatsu satellite monitoring system	●
Tool-set	●
Automatic central lubrication	●
Filling tool for central lubrication system	○
Turbo II air pre-cleaner, cyclone type	○

#### OTHER EQUIPMENT

Counterweight	●
Electronically controlled load stabilizer (ECSS)	●
Special custom colour	○
Add. counterweight 325 kg	○
Additional side counterweight 430 kg	○
Anti-corrosion specification	○
Waste-handler specification	○
Cold area kit (engine and cab pre-heating)	○

#### ATTACHMENTS

High-lift equipment	○
Hydraulic quick-coupler	○
Universal buckets	○
Earthmoving buckets	○
Stock pile buckets	○
High-dump buckets	○
Log grapples	○
Fork carrier and tines	○
Waste handling buckets	○
Light material buckets	○

Further equipment on request

The WA430-6 is equipped in accordance with the safety regulations of the machinery guidelines 89/392 EWG ff and EN474.

- standard equipment
- optional equipment

Your Komatsu partner:

# KOMATSU

**Komatsu Europe International NV**  
 Mechelsesteenweg 586  
 B-1800 VILVOORDE (BELGIUM)  
 Tel. +32-2-255 24 11  
 Fax +32-2-252 19 81  
[www.komatsu.eu](http://www.komatsu.eu)

VESS001106 07/2011

Materials and specifications are subject to change without notice.  
**KOMATSU** is a trademark of Komatsu Ltd. Japan.