

Amy's

needlework supplies & classes

JUN/JUL 2015

what's inside this month

WHERE IN THE WORLD IS AMY?

Amy has left the building! Other than going to market or to visit family, this simply never happens. Amy and Bob have gone on a much needed holiday to explore the world. They are taking a cruise with 12 stops along the way. We thought it would be fun to let you play detective and figure out where she is going.

You'll need your historical, mythological, geographical, religious, and even mathematical skills to figure out the 12 clues scattered throughout the newsletter. The first person to figure out all 12 of Amy's destinations will receive a free magnet of their choice (limited to in-stock merchandise only) and free shipping on their next order. But don't despair, even if you're not able to figure out all Amy's destinations, submit your answers and we will draw a second winner from all those that enter, whether your answers are correct or not. Second prize will be free shipping on your next order. So just give it your best shot and you still have a chance to win.

And, since we want everyone to be a winner, there are additional BONUS questions worth 1% (up to 10% total) that are applicable even if your name is not drawn.

Please submit your answers via email to amys3808@aol.com. Deadline for all entries is June 9th (Amy's return). We will announce the winners on our Facebook page as well as in the next newsletter.

Good luck and have fun!

CLUE I

Your first clue is right here on this page. There are two landmarks below that can be found in the first of three countries outside of the US that Amy and Bob are visiting. We want your answers as specific as possible, so we will tell you that their first destination is the LARGER of the two cities represented.

TRAVEL GOODIES

page 2

NEW PRODUCTS

pages 3-5

HOME STUDY

pages 7-8

CONTEST

page 14

AND MORE!

Till

Amy's Golden Strand

3808 Summer Avenue

Memphis, TN 38122

phone: 901.458.6109

fax: 901.323.4701



TRAVEL GOODIES

There are always questions about what scissors or cutters are allowed in a carry-on when flying. Per the TSA.gov web page, scissors that are "metal with pointed tips and blades shorter than 4 inches are allowed, but blades longer than 4 inches are prohibited." This sometimes causes confusion as some agents will say that any **scissors** over 4" are banned, while TSA clearly says it is the length of the blades that is relevant.

It is important to note though that they also say, "Any sharp objects in checked baggage should be sheathed or securely wrapped to prevent injury to baggage handlers and inspectors." With that in mind, we would like to keep you versed on some of the best travel tools we have available.

COTTON CANDY SCISSORS

These cotton candy scissors are some of the few that come with the required sheaths, preventing you from having to buy a separate sheath.

COST: \$8⁰⁰



CLUE II

The next destination is a city on the River Arno. It is home to the painting *The Birth of Venus* by Botticelli and is also the birthplace of Collodi, the writer/creator of *Pinnocchio*. Only one of the city's numerous bridges, the Ponte Vecchio, survived WWII, and it is now lined with tourist shops.

BONUS 1%: What is the legend about why that bridge was spared?

SUPER SNIPS

These are 2 1/2" with a short blade length of 5/8". There is an attached, protective cap to cover the point. At this price, even if a picky TSA agent takes them, you won't cry.

COST: \$6⁰⁰



PENDANTS



Whether or not these are allowed is a mystery. Per TSA, "Razor-Type Blades - such as box cutters, utility knives, and safety razor blades" are prohibited, but "disposable razors and their cartridges are permitted." As these look so much like a beautiful necklace, they might just slide under the radar without being questioned.

COST: \$18⁵⁰

DISCLAIMER: We have been told that children's blunt-tipped scissors are allowed. Despite the fact that TSA specifies these items are allowed, each airport shows their own discretion. If you have had an experience contradictory to the TSA rules, please let us know so we can share it with your fellow stitchers.

NEW ITEMS

You would think with Amy out of the country and missing market, we might be out of touch about What's New. We will miss some things, but we had helpers give us a heads up on the newest mags from Accoutrement.

NEW MAG FRIENDS



CLUE III

The largest island in the Mediterranean, this is where the famous mathematician Archimedes was born. Two out of three of the country's infamous volcanos are located on this island; but what this island is best know for is the origin of the term "mafia."

BONUS 1%: Name the tallest volcano in Europe which is one of the two located here.

COST: \$8⁰⁰-\$18⁰⁰

NEW CANVASES

These great new Halloween Drinks by A. Bradley are so cute when stitched up! And guides are available, too!

A. BRADLEY

Witches Cocktail

AB432
18m
6 x 8
\$94.⁵⁰

Eyeballs

AB431
18m
5 x 4.75
\$69.⁵⁰

Ghostly

AB433
18m
6 x 8
\$94.⁵⁰

Halloween Drink Guides

\$20.⁰⁰ each



AB432



AB433

CLUE IV

AB431 Despite the fact this city was originally founded by the Greeks in the late 8th century BC, almost all of it was built after 1908. This is due to an earthquake and subsequent tsunami which destroyed 90% of the city and claimed about 80,000 lives on December 28, 1908.
BONUS 1%: Tell us the original Greek name of this city.

ROGUE

Whether your world is big... or small...

large globe is 4.25" R available in modern or antique

small globe is 2.5" R available in modern or antique

We have you covered!

Canvases are stitch painted. Sizes above are stated for 18m, but canvases can be ordered on 13m. Flags are 4.25" x 2.5", and are available for all countries.

Globe Ornaments (two-sided)

18m	18m
4.25 R	2.5" R
\$89. ⁰⁰	\$38. ⁰⁰

Flag ornaments

F001-267
18m
4.25 " x 2.5"
\$28.00

Any country or region can be ordered.

Sticking right with our travel theme are Rogue's new travel canvases. Catering to the ambitious and the quick stitcher, the two-sided globe ornaments come in both 4.25"R and 2.5"R and in both antique or modern coloring. The flags are 4.25" x 2.5," and we have been assured any country can be ordered!



NEW CANVASES

KATE DICKERSON



We are huge fans of Kate's travel collages, and though she has already done some of our favorite cities (Charleston, NYC, London, Milano, Paris & Provence), we were pleased to hear there are more coming including (but not limited to):

Venice, Roma, Barcelona, Madrid, Lisbon, Boston, Israel, Philadelphia, Cape Cod, Austin, Houston, Wash. DC, Napa Valley, Nashville, Savannah, San Francisco & Chicago.

Even better...Kate is taking requests!



London, Charleston, NYC, and Provence (other destinations available)
 Kate Dickerson
 18m
 10 x 10
 \$164.00 each

CLUE V

With this destination, Amy and Bob have ventured into another country. The nickname of this island is "The island of the winds," and it is a popular tourist destination known for its nightlife. Mythology states this is where Hercules slayed the invincible giants and the stones of the island are said to be the giants' petrified testicles. **BONUS 1%: Name the mythological God the founder is supposed to be descended from.**

These are Delicious Eye Candy Bargello Ornaments (Eye Candy Designs) stitched and designed by Ada Haydon. Ada allowed us to preview these fabulous color-intriguing designs while she was here for Rent Amy Days in April. All of these patterns will be coming soon in Needlepoint Now magazine.



2015 BOOK CLUB

MYSTERIES OF NEEDLEPOINT

Chapter 3 of The Mysteries of Needlepoint, "Scene of the Crime" is hot off the presses and traveling the world over to go to their new homes. This chapter spills the beans on embellishing needlepoint canvases using stitches, colors and threads. This chapter is just the beginning of the lessons on selecting stitches and threads using artistic principles to make design areas move forward or move back in the picture. There is information about direction flow, movement and developing a 3-D image. Chapter 3 includes a Bonus stitch guide. The stitches and techniques in the guide can be used on the model canvas by Chelsea Needlepoint or applied to other designs of choice.

THE CASEBOOK

The Casebook series is a supplemental activity to accompany Amy Bunger's Mysteries of Needlepoint Book Club. Each Casebook chapter corresponds with a Mysteries chapter and is meant to enhance your comprehension of the lessons being taught in the book club. Visuals are an important aspect to understanding and retaining information and the Casebook contains varied practice problems and exercises, all designed for review and reinforcement.

Chapters 1 and 2 are available either as a downloadable version or can be shipped to you (with an additional printing, s/h charge).

MYSTERIES OF NEEDLEPOINT SERIES

SIX INSTALLMENTS

\$30⁰⁰ EACH

THE CASEBOOK SERIES

SIX INSTALLMENTS

\$15⁰⁰ EACH

MYSTERIES OF NEEDLEPOINT MAGNET

We are thrilled with the incredibly STRONG Sherlock Holmes magnets by Rogue Designs. These bad boys are rough and tough and will hold your needles, pins, metal laying tool, scissors and probably your car keys!!! I love the silhouette of Sherlock Holmes with his mysterious purple background that was developed by the talented people at Needlepoint Now magazine and now very excited to have that image on my own magnet.

We have several but quantities are limited.

SHERLOCK MAGNET

1.5" ROUND

\$18⁰⁰



CLUE VI

We are in another country again! The Virgin Mary lived her final years in a cottage near this city, and it is the location of the first church devoted to her. The temple of Artemis, one of the Seven Wonders of Antiquity, is located here, as well as the third largest library (with the capacity of 12,000 scrolls) after the Alexandria and Pergamum.
BONUS1%: Name the library.

NEW HOME STUDY

PUMPKIN PARADE BY MELISSA SHIRLEY



Join in the fun to parade along under the full moon with these cute witches and their pumpkins of all sizes! Amy is going to stitch this fabulous new design by Melissa Shirley to tempt our talents into the twists and turns that make needlepoint SO MUCH FUN!

There will be 6 kits, one sent approximately every month for six months. Start date will be October or November of 2015.

Please call the shop to sign up. Deadline for ordering canvases for the Autumn class date is July 1st, 2015.

Canvas \$290.00 (included with Kit #1)

We apologize for not being able to give you the cost of each kit but we will not have those prices until the canvas is stitched. The canvas is so new, we don't have one to stitch yet.

PUMPKIN PARADE

CANVAS

\$290⁰⁰

CLUE VII

The name of this port city means "bird island" even though it is not actually an island. It is known for its large marina with a capacity for about 600 boats, and is used as harbor access for the many important historical towns nearby, including the answer to Clue VI. It was founded in the 16th century by Venetians and has a castle and castle walls around it for protection against pirates.

HOME STUDY

SHEHERAZADE HOME STUDY PROJECTS

Sultan's Tray



The fabulous journey through the romance of Scheherazade is coming to an end. The third kit for Sultan's Tray is due to ship in June once all threads and doodads have reached the store. This powerful design, by JP Sligh, has been a delight to work on. It has stretched my stitching imagination and used threads from all corners of the shop. I hope that everyone has enjoyed working it with me and thank you so much for your patience with my "slow finish."

CLUE VIII

This island's character of impregnable walls and grand palaces and churches are due to the Knights of the Ioannites, who resided there for 213 years. When the Knights were defeated and forced to surrender the island to Suleiman the Magnificent, the Pope and Charles V helped them relocate to Malta, where they became the Knights of Malta. **BONUS 1%:** Name the Seventh Wonder located here AND the diety it represented.

SHIPMENT SCHEDULE

SCHEHERAZADE PART TWO, KIT #3

shipping June 2015

IN THE SHOP

TRAVEL CANVASES



Tuscan Spring
Sharon G
\$157.⁵⁰

CLUE IX

This island is easily identifiable by sight, so this is your only clue:




Germany Angel
Painted Pony
\$70.⁰⁰



Jerusalem Map
Ruth Schmuff
\$126.⁰⁰



Manhattan View
Fleur
\$315.⁰⁰

Parisian Santa
Petei (Painted Pony)
\$40.⁰⁰



State Postcards
Denise DeRusha
\$59.⁰⁰ each

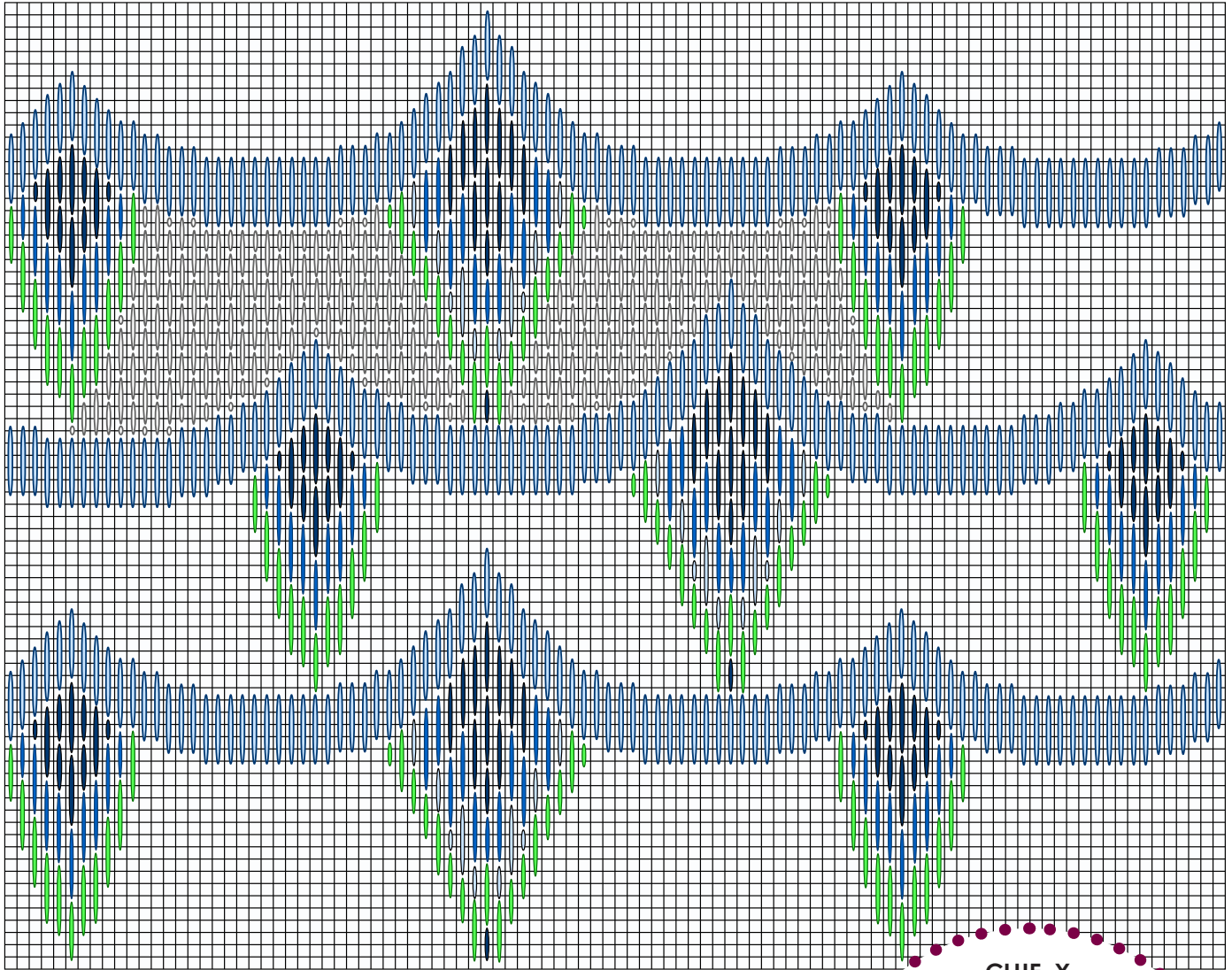


Seacoast off of Ponza Italy
Sharon G
\$164.⁰⁰



STITCH OF THE MONTH

POSEIDON'S CHANDELIER



CLUE X

Work the sea waves of the pattern (diagrammed in scallops of light blue) first. Caution, the count is irregular from point to point. Work the blue & green drop patterns of the chandelier next. Fill all of the open spaces with Giant Brick Stitch as shown in the top row.

Poseidon's Chandelier can be worked alone as the pattern for a pillow, cushion or chair seat. This pattern can be worked for a background behind a large, BOLD, single subject matter, like a person, animal, or building. If the subject of the canvas is not bold or is a grouping of smaller objects, you might still be able to use this pattern if it is all worked in pale, light and medium neutral colors. Want to learn more about how different values of color work with your needlepoint designs? Read Chapter Three in the *Mysteries of Needlepoint Book Club "Scene of the Crime"*!

This city is one of the oldest in the world and is considered "the cradle of Western civilization, being the birthplace of democracy, Western philosophy and literature, the [modern] Olympic Games, political science, major mathematical principles, and theatre."
BONUS 1%: Name the most famous landmark there, as well as the most important temple, dedicated to the goddess Athena.

NEW STITCH GUIDES



Black Queen Hooter

by JP Designs
18m
9 x 13.25
\$101.⁰⁰

Stitch guide now available by Amy Bunger \$87.⁵⁰
Thread Kit \$170.⁶⁵

CLUE XI

The majority of Italian Americans come from southern Italy, and--most notably--this city, as thousands immigrated from here to the United States in the late 19th century. This city also claims to be the origin of our first "fast food," the pizza. **BONUS 1%:** Tell us the maximum diameter this city's Pizza Association claims a pizza can be.



Green & Red Ornament

by Chelsea Needlepoint
18m
3.5 x 4.5
\$20.⁰⁰

Stitch guide now available by Amy Bunger \$20.⁰⁰
(included free in Chapter 3 of *Mysteries of Needlepoint*)
Thread Kit \$39.⁰⁰

NEW BOOK



IT'S ABOUT DARN TIME!

Sharon G has just released her newest book, a wonderful collection of all kinds of fun darning patterns.

There are 147 pages of large, easy to read diagrams and fabulous stitching tips. You're sure to find the perfect stitch for your next canvas.

COST: \$50.
ACTIVITY

CLUE XII

This town is now an archeological site and most "artifacts" seen here are excellent replicas of the originals now housed in a museum in the city in Clue XI. This town was one of two destroyed by Mt. Vesuvius in 79 AD. **BONUS 1%:** Name the other town, and write the year it was destroyed in Roman numerals.

CUSTOMER GALLERY

Garden Party
from Melissa Shirley
designed by Vicky Sawyer
stitched by Trudy Downing
guide by Amy Bunger



CUSTOMER GALLERY



“Claire” and “Patrick”
from Melissa Shirley
stitched by Liza Ockershauser
guides by Amy Bunger

“Jessica” and “TBA”
from Melissa Shirley
being stitched by Liza Ockershauser

Liza has already finished two (Peppermint Stick Santa & Golden Santa), has one about half way (Wintergreen Santa Sock) and is soon to start the newest Melissa Shirley Winter White Santa Sock in beautiful pastels of aqua, lavender, green and pink (Liza used two of Amy Bunger's stitch guides for her finished socks and is working adaptations from those guides along with her own ideas to work the other two socks).



“Rachel”
from Melissa Shirley
stitched by Michel Cross

CUSTOMER GALLERY



Trixie, Dixie & Peach
 from Kelly Clark Studio
 designed by Dan DiPaolo
 stitched by Joanne Colandrea
 guide by Connie Camp



Pansy Pig
 from Melissa Shirley
 designed by John Johannsen
 stitched by Ann Sonnenfeld
 guide by Amy Bunger



Baronesses (Texas Women)
 from Flying Needles
 stitched by Jean Backhofner
 with assistance from Carolyn Baird at Chapparral in
 Houston, TX



Cat Walk
 from Shelly Tribbey
 stitched by Michel Cross
 guide by Amy Bunger
 finishing by Liza Ockershauser

HOW'S YOUR DETECTING?



Sherlock Stand-Up
by Rogue Designs
18m
2.75 x 5.5
\$30.00

Here's a worksheet to jot down your answers to our clues about Amy's 12 destinations:

- I. _____
- II. _____
- III. _____
- IV. _____
- V. _____
- VI. _____
- VII. _____
- VIII. _____
- IX. _____
- X. _____
- XI. _____
- XII. _____

And the 10% worth of bonus questions:

II. legend about why Ponte Vecchio was spared: _____

III. tallest volcano in Europe: _____

IV. original Greek name of the city of CLUE IV: _____

V. the god the founder of the city in CLUE V was descended from: _____

VI. name of library in the city of CLUE VI: _____

VIII. the Seventh Wonder located in CLUE VIII & the diety it represented:

_____ and _____

X. the most famous landmark in CLUE X and the temple dedicated to Athena:

_____ and _____

XI. the maximum diameter a true pizza can be: _____

XII. the other major town Mt. Vesuvius destroyed and the year it was destroyed in Roman numerals:

_____ and _____

**SHOP IS OPEN BY APPOINTMENT ONLY.
PLEASE CALL 901-458-6109 OR E-MAIL AMYS3808@AOL.COM
FOR A DAY AND TIME WHICH IS CONVENIENT.**