



WICHITA A'S MODEL A FORD CLUB

Rumbleseat Review

P.O. Box 25
Wichita, KS 67201

April 2013

www.wichitaas.com

Volume 28 Issue 4

April 2013

S	M	T	W	TH	F	S
	1	2	3	4	5	6
7	8	9	10	11	12	13
14	15	16	17	18	19	20
21	22	23	24	25	26	27
28	29	30				

May 2013

S	M	T	W	TH	F	S
			1	2	3	4
5	6	7	8	9	10	11
12	13	14	15	16	17	18
19	20	21	22	23	24	25
26	27	28	29	30	31	

June 2013

S	M	T	W	TH	F	S
						1
2	3	4	5	6	7	8
9	10	11	12	13	14	15
16	17	18	19	20	21	22
23	24	25	26	27	28	29
30						

April REFRESHMENTS

- ◆ Ruth Goodman
- ◆ Sue Johnson
- ◆ Carol Allen
- ◆ JoAnn Bruce
- ◆ Vicki Hildibrand

CLUB TOURS & MEETING SCHEDULE

April 2013



- 22..... Club Meeting at Minisa Park, 704 W. 13th7:00 PM
 Program: Evolution of the Model A water pump by RG
- 27..... Salty Wood Nature Tour..... Phyes - Ludlows

May 2013



- 5-10..... MAFCA National Tour.....Blue Ridge Parkway
- 7..... Newsletter Deadline... editor@wichitaas.com
- 11..... Bridges of Cowley County.....Ruggles
- 20..... Club Meeting at Minisa Park, 704 W. 13th7:00 PM

June 2013



- 2..... Newsletter Deadline... editor@wichitaas.com
- 9..... All Wheels Day at Lake Afton..... Clark - Ellerman
- 16-21..... 'A's In The Wild Regional Meet.....Wichita A's
- 24-28.... MARC National Meet.....Lexington, KY

WHAT'S INSIDE

Calendar	1
Note from the President	2
Model A Across Country	3
Future Tour—This 'n That	4
Past Tour & Regional Meet	5-6
2013 Tour Schedule	7
Swap Meet, Model A Meets	8
Announcements	9
Tech Talk	10-11
Era Fashion	12



WICHITA A'S MONTHLY MEETING MINUTES

March 25, 2013

Dennis Ellerman, Vice President, called the March 25, 2013 meeting of the Wichita A's to order. The minutes from the January meeting (no meeting in February due to snow storm) were approved as printed in the newsletter. **Shawn Sanchez** (son of **Richard Sanchez**) and **Aaron Frazer** (son of **Randy Frazer**) were introduced as new members. Treasurer, **Alan Orr**, gave both February's and March's financial reports.

Bonita Graham, our Sunshine Lady, reported no current concerns. **Susan Stone** presented the following MARC mileage awards: 15,000 miles to **Roger Graham**, and **Chris Cushman** - 5,000 miles to **Lawrence Kottas**, **Richard Kibbe**, and **Don Shearer** - and 2,000 miles to **John Davis**.

Claudia Ellerman updated the club members on our 2013 Regional Meet, **Tom Ruggles** reported on the club's past swap meet, **Richard Kibbe** summarized the after swap meet Bunko party, **Frank Chenoweth** re-

minded the club about the March 30th Zenda tour, and **Doris Jean Ludlow** described the Hutchinson Salty Wood tour scheduled for April 27th (last sign up date April 22).

John Stone shared handouts for successful and safe touring and reminded the club that these suggestions and tips are located on our website as well. **Dennis Ellerman**, program chairman, asked for future program suggestions. After a 20 minute break with refreshments provided by

Ruth Ann Praeger, **Arley Bennett**, **Judy Sharp**, **Richard Sanchez**, and **Susan Stone**, **Don Grabendike** conducted this year's tour planning. After pointing out that **John Stone** had made a mistake in thinking we had not identified visitors, the meeting was adjourned. Our next meeting is April 22.

Dawna Ruggles, Secretary

APRIL 2013 PRESIDENTS MESSAGE

We have returned from our winter vacation and ready to start Model A touring again. I want to thank Dennis Ellerman, Vice President for covering for me for the past several months. I have received many reports that he did a great job.

I arrived just in time to catch a ride to Zenda, Kansas with Richard Kibbe for the Spring Kickoff Outing. This daytrip and dinner was hosted by the Bruce's and Chenoweth's, the food was excellent and the fellowship outstanding. Thank you to all who attended.

I have been looking at our upcoming tours and I see the Ludlow's and Phye's have a tour on April the 27th, called the "Salty Wood Tour". Mark your calendars for this event and I look forward to seeing everyone.

If you have an idea for a tour please contact Don Grabendike, our Tour Chairman. If you are a first time tour host, or thinking about doing a tour for the first time don't hesitate to give Don a call as he is always more than happy to assist you with information or ideas.

I am tentatively planning a board meeting later this month.

Our Regional Meet, "A's in the Wild" is scheduled for June 16 - 21, 2013. We currently have 57 guests signed up, so don't be left out in the wild, come join us in June for the "A's in the Wild", I can promise you there will be good food, lots to see and do and terrific camaraderie.

Chris Cushman President

NOTE FROM THE EDITOR

After giving it much consideration, skipping a June publication of the newsletter creates a problem in getting upcoming tour information and announcements out to you. I have decided that I will publish a newsletter in June. Due to my hectic schedule in June, I have moved up the due date to Sunday, June 2, 2013. The newsletter will be emailed and mailed, via USPS, close to the June 19th date.

In the event you receive an email from me from my old email address do not panic and change my email address. When you email me, please continue to use the following email If I send out two emails, in one day, to a large number of people using outlook or yahoo email providers, they think I'm spamming and they severely limit me on a daily basis. So in the event I have to send out an email to a large group of people, it may be coming from my old email address using another, not so preferred, email program. Thank you for helping me out.

Linda Kibbe, Editor

MAINE MISSES PILOTED MODEL A ACROSS THE COUNTRY

by Aileen Nile, Dunedin, FL

Back in the summer of 1931, my roommate and I (2 years out of college) had the biggest adventure of our young lives as we drove across the country in our Model A Ford.

With a Maine license, our motto was “Portland to Portland”. Our preparations included enrolling in a class for auto mechanics—we were the only females. My dad made us take a gallon jug of water for the radiator (which we never used) and a tow chain, which came in very handy—once.

From a caring friend, we accepted a rock wrapped in a sock for protection! And finally, with \$500 each in traveler’s checks, we were on our way.

Went Where Road Took Them

We had no planned route (the one not driving studied the Rand-McNally maps and decided where we would go next).



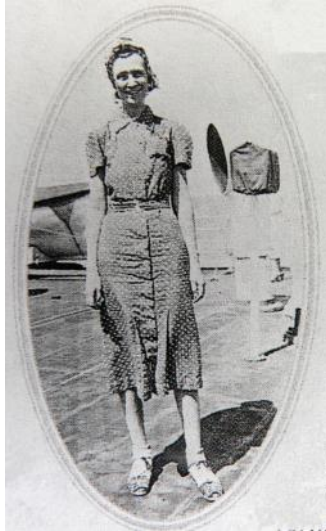
We’d promised ourselves a good \$1 meal each day—but found it difficult to find one that cost that much!

We began by exploring upper New York State and Niagara Falls, then spent a night in Canada. We reached western Michigan just

in time to catch the night boat across Lake Michigan.

At the Wisconsin-Iowa border, we found a ferry to take us across the Mississippi River.

From then on, there were no



paved roads until we reached the West Coast—and the heat was terrific.

The roads were terrible, too—almost impassable in spots. But no matter how rough the going, our trusty Model A kept chugging along and we always found something to laugh about.

In the Rockies, we were delighted to find that our Ford could pass some of the larger cars stranded with steaming radiators on the steep upgrades.

We thought we’d be elated to reach Portland, Oregon, but when we went to the local AAA office to tell them of our accomplishments, we found an unsympathetic ear.

We were interested in seeing the sights, so we asked the man about Crater Lake. His assessment? “Just a hole in the mountain with water in it.” The redwoods? “Just a lot of big trees.”

He did tell us where the post office was, so after picking up our mail, we couldn’t get out of town fast enough.

Crater Lake was beautiful. We rode mules down to the water’s edge and back. Later, when we were driving around the rim, a tree crashed across the narrow road ahead of us (that was the time our cable tow chain came in handy).

At Union, Oregon, we saw another Maine license plate—the two schoolteachers we met were just as excited about that as we were! Union was a lovely town so we stayed the night.

The worst lodging we had was in Yellowstone Park. With only a candle for light and heat, we were so cold! The most we ever

paid for a cabin was \$3.75 in Reno, Nevada—we thought that was ridiculous.

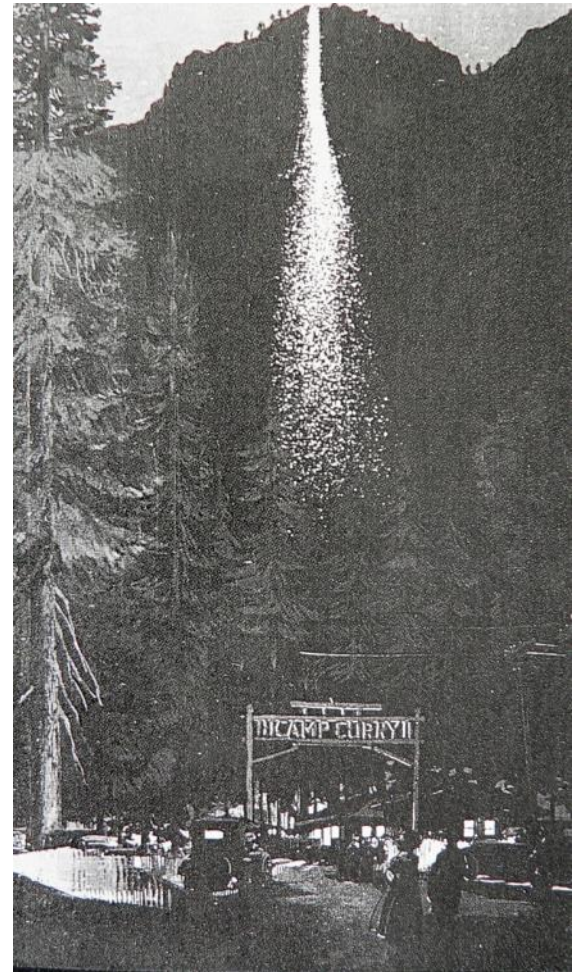
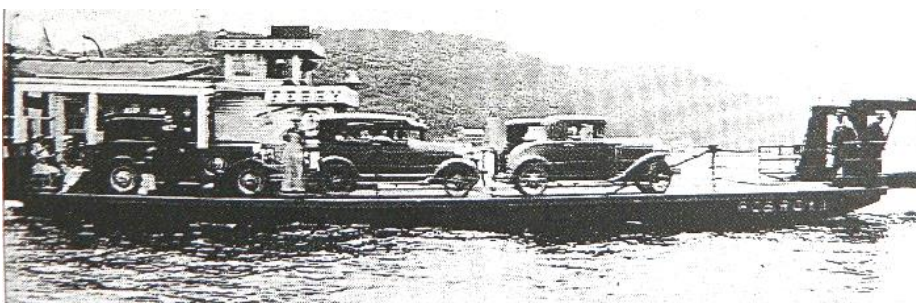
Point of Pride

Several states had huge signs at the border extolling that state’s claim to fame. One in particular stands out for me—“South Dakota has more free bridges over the Missouri River than any other state in the Union.”

I guess the two most memorable sights of our trip were seeing Mt. Rushmore with the unfinished head of Washington, and the spectacular firefall at Yosemite Park.

In Washington, D.C., we couldn’t resist parting with some of our dwindling cash on a plane ride around the Washington Monument—our very first plane ride!

When we finally reached home after months on the road, we each had \$5 left in our pockets. What a trip! What memories!



FUTURE TOURS

Salty Wood Tour

April 27, 2013

Leave: 8:00 AM

From: Casey General Store
11931 West Central Ave.
(West Central & 119th St. West)

Arrive Home: 6:00 PM

Cost: \$5 per club member
\$18 per guest

Sign up at March or April meeting. The deadline to sign up is at the April 22nd meeting. If you can't make the meeting you can give either Ludlows or Phyes a call.

Ludlows or Phyes

BRIDGES OF COWLEY COUNTY

Saturday, May 11, 2013

All day tour of historic stone-arch bridges in Cowley County. We will visit several bridges around the county in the morning, have a buffet lunch at the Sirloin Stockade in Arkansas City, and complete the tour in the afternoon. There will be certified unpaved roads on this adventure, so be prepared for some dirt, rock and/or mud. Details, cost and signup at the April 22 meeting. Dawna Ruggles is in charge of getting us lost, and Tom will try to find the way home.

THIS 'N THAT



Aaron Frazer has purchased this beautiful 30 coupe from **Bill & Grace Brooks**. **Aaron** is the 4th generation club member from the **Frazer** Family. **Clarence** and **Peggy Frazer** from Western Kansas were active club members in the 80's and 90's. They are now deceased. **Dave Frazer**, their son from Moundridge was a member, also deceased. **Randy Frazer** is **Dave's** son and an active club member now. **Aaron Frazer** is **Randy's** son and recently joined the club. **Aaron** has been attending Northwestern Oklahoma University but is moving back home to Moundridge and will attend Hutchinson Community College next semester.

THE GREAT RACE -2013

The Hemmings Motor News GREAT RACE presented by Hagerty and Coker Tires will run from Saturday, June 22 to Sunday, June 30. It will go back and forth across the Mississippi River starting in St. Paul MN and finishing in Mobile AL!

Taylor & Todd Merrill have entered this year. We wish them a Super Race!!

See greatrace.com for more info.



McDUGAL

"Sam! I just got 30 bucks from some sucker for that old wood wreck!"

PAST ACTIVITIES AND TOUR

The Annual Zenda Spring Kickoff Trip

Zenda, KS is the final destination for this trip. This is the second outing for our cars this year. The first was on New Years Day with lots of snow on the ground and today was sunny and dry.

After arriving in Zenda everyone enjoyed a great meal at the old lumberyard. The old cars seemed to be still running pretty good after being stored in a garage for a couple of months.

A big "Thank You" is owed to Frank Chenoweth and Bob Bruce for organizing this tour. Great Job!



People and Cars before dinner.



Just a few of the Model A's



Before dinner treats and conversation.



Oh, Oh!!! Where is the Misses?



Frank and Peggy Chenoweth heading to dinner.

“The Annual Zenda Spring Kickoff Trip” continue:



Bob & JoAnn Bruce



Darrell Ludlow, Scott Guinty, Judy Hill & Doris Jean Ludlow

THIS 'N THAT

A's in the Wild Update



It's two months before the regional meet. All the committee chairs are working to put the finishing touches on their events. This is the time they will be asking for volunteers to help with each event. We had sign-up sheets at the last club meeting, and we'll have them available at the April meeting, also. Please consider signing up to help if you haven't already. We will need many volunteers to make this a successful meet.

We have guests coming to our city from all over the United States, so let's welcome them to Wichita and show them a great time.

We did have a couple of people that were in charge of the car games but had to drop out because of other commitments. I've talked my husband, Denny, into taking charge of that event – in addition to doing the Hubley Derby. The car games committee was well on its way, but he will still need a lot of help with it and the Hubley Derby. Thanks to all of you that have signed up to help with car games already, and if anyone else would like to help, please give Denny a call.

I'll see you at the next club meeting and hope that all of you will consider volunteering to help. There are many jobs to do - bringing food for the hospitality room, working in the hospitality room, taking tickets, handing out the goody bags, helping with the tours, etc. The more volunteers we have, the more time everyone will have to enjoy the meet.

If you haven't registered, be sure to get your registration to Linda Kibbe. The registration form is on the web-site, and I'll bring a few to the next club meeting. It's getting close and the excitement is building.

Claudia Ellerman

WICHITA A'S TOURS – 2013

April 27	Salty Wood Nature Tour / Hutchinson	Ludlows/ Phyes
May 11	Bridges of Cowley County	Ruggles
June 9	All Wheels Day/ Lake Afton	J Clark/ Ellerman
June 16-21	'A's In The Wild/ Regional Meet	Wichita A's
June 24-28	MARC National Meet/ Lexington KY	
July 4	Derby Parade & Picnic	Derby Gang
July 14	Automobilia Moonlight Car Show	E Giesen/ JD Stone
August 10	'A' Play Around Tour	Beavers/ Kibbes
August 24	When Pigs Fly/ McPherson	Ruggles
September 14	Men's Tour/ Headin' West	Hilger/ Ruggles
September 22	Ice Cream Social	Ludlows
September 28	International Model A Ford Day	
Sept. 27-28-29 ??	N to Washington ???	Sanchez/ B Titus
October 6	All Ford Day	???
October 18-19-20?	Santa Fe Trail/ Council Grove	Sharps
November 2	Mennonite Thanksgiving Dinner/ Yoder	D Waller
November 23	Outhouse Tour/ Elk Falls	Arnolds
December 7	Ladies Christmas Luncheon	Kottas, J Guinty
December ?	Club Christmas Party	Phyes

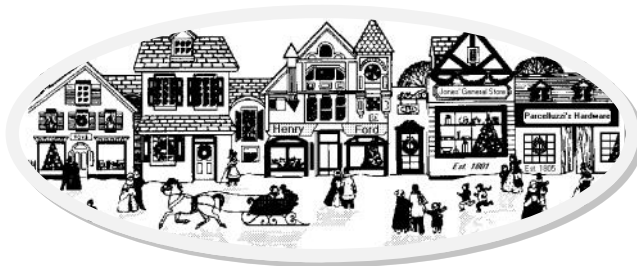
2014

January 1	First Tour of 2014	The Wizard
February 22	Post Swap Meet Party/ Bunco	Kottas

LOCAL AND NATIONAL CALENDARS

2013 SWAP MEET SCHEDULE

April 25-28.....	Pate Swap Meet.....Fort Worth, TX
May 3.....	Lawrence Swap Meet.....Lawrence, KS
May 9-13.....	Chickasha Spring Swap Meet.....Chickasha, OK
June 11-15.....	Petit Jean Swap Meet.....Petit Jean, AR
June 22-23.....	Swap Meet Fremont.....Fremont, NE
July 11-14.....	Iola Old Car Show & Swap Meet.....Iola, WI
August 16-18.....	Springfield, MO Swap Meet.....Springfield, MO
September 13-15.....	Southwest Swap Meet, Wise County Sherriff's Posse Rodeo GroundsDecatur, TX
October 9-12.....	Hershey Region AACA Swap Meet.....Hershey, PA
February 7-8, 2014.....	Sunflower Swap Meet, Kansas Pavilions.....Wichita, KS



2012 - 2014 FUTURE REGIONAL & NATIONAL MODEL A MEETS

May 5-10, 2013.....	MAFCA National Tour.....Blue Ridge Parkway
June 5-9, 2013.....	Texas Tour.....Round Rock, TX
June 17-21, 2013.....	Wichita A's Regional Meet.....Wichita, KS
June 24-28, 2013.....	MARC National Meet.....Lexington, KY
April 3-6, 2014.....	MARC Membership Meet.....St. Louis, MO
June 9-12, 2014.....	Tulsa Model A Club Regional Meet.....Tulsa, OK
June 21-27, 2014.....	MARC National Meet.....French Lick, IN
July 14-18, 2014.....	MAFCA National Convention.....Puyallup, WA
April 9-12, 2015.....	MARC Membership Meet.....Joliet, IL
June 8-12, 2015.....	Northwest Regional Meet.....St. Joseph, MO
June 19-24, 2016.....	MAFCA National Convention.....Loveland, CO

ANNOUNCEMENTS



- ### May Birthdays
- 1 Feryl Giesen
 - 2 Sue Johnson
 - 3 Ron Eyres
 - 9 Mary Hilger
 - 10 Kathleen Paxton
 - 10 Ken Tackitt
 - 10 Willis Wollman
 - 11 Lu Andrews
 - 11 Karen Yardley
 - 12 Max Lumbert
 - 12 Eric Weninger
 - 13 Garry Brashear
 - 13 Tony Pezzola
 - 15 Scott Guinty
 - 15 Ron Kester
 - 16 Kat Arnold
 - 17 Richard Wunder
 - 18 Linda Lumbert
 - 18 Cherie Slater
 - 18 Don Waller
 - 19 Milton Hessefort
 - 21 Kim Slater
 - 22 Judy Hill
 - 23 Marvin Stoss
 - 24 Jim Robertson
 - 26 Steve Huscher
 - 26 Ron Little
 - 26 Hazel Roberts
 - 27 Shirley Albers
 - 28 Karolyn Wendt
 - 29 Peg Mahoney

Sympathy

Prayers of Sympathy for
Nora & Ken Meyers in observance
of the death of her Mother.

Thank You

**Nora Meyer's Mother,
Edna E. Baker**

Thank you for the beautiful
plant and thoughts at Edna's passing.
Your prayers are also appreciated and
where very helpful.

Ken & Nora Meyer

Thank you for the birthday
greetings I received from the Model
A Club members, I enjoyed each one
of them.

Dorothy (Dot) Tuttle

Roster Update

Myron & Sandee Beskow
.....
Wichita KS 67207-3253
.....

For Sale

1977 Buick Riviera, located
in LaCrosse, KS \$2000. If interest-
ed, contact:
John Stone (contact editor for
info)

Congratulations!

Abraham Ross Dean Drees, born
on 2-19-2013. His parents are **Ben
& Lindsay Drees**, sister **Adeline**,
Grandparents **Stan & Pam Ludlow**
and Great Grand parents **Darrell &
Doris Jean Ludlow**.

Barrett Taylor Shields, born on 2-
27-2013. His parents are **Chris** and
Ginny Shields, sister **Emmalyn**,
Grandparents **Terry & Cindy
Sheilds** and Great Grandparents
Darrell & Doris jean Ludlow.

New Members

Aaron Frazer
.....
Moundridge, KS 67107-8506
.....
1930 Coupe
.....

Shawn Sanchez
.....
Wichita, KS 67204-4621

Refreshments

- | May 2013 | June 2013 | July 2013 |
|----------------------|-------------------|---------------------|
| ♦ Janice Wilson | ♦ Kay Lumbert | ♦ Barb Phye |
| ♦ Norma Agard | ♦ Linda Lumbert | ♦ Nora Meyer |
| ♦ Lavonne McLaughlin | ♦ Bev Grant | ♦ Jane McLaughlin |
| ♦ Orpha Eyres | ♦ Nor Masters | ♦ Trudee Harshfield |
| ♦ Kathy Arnold | ♦ Jane McLaughlin | ♦ Roy Goates |

Newsletter Deadline

Tue, May 7, 2013
Sunday, June 2, 2013

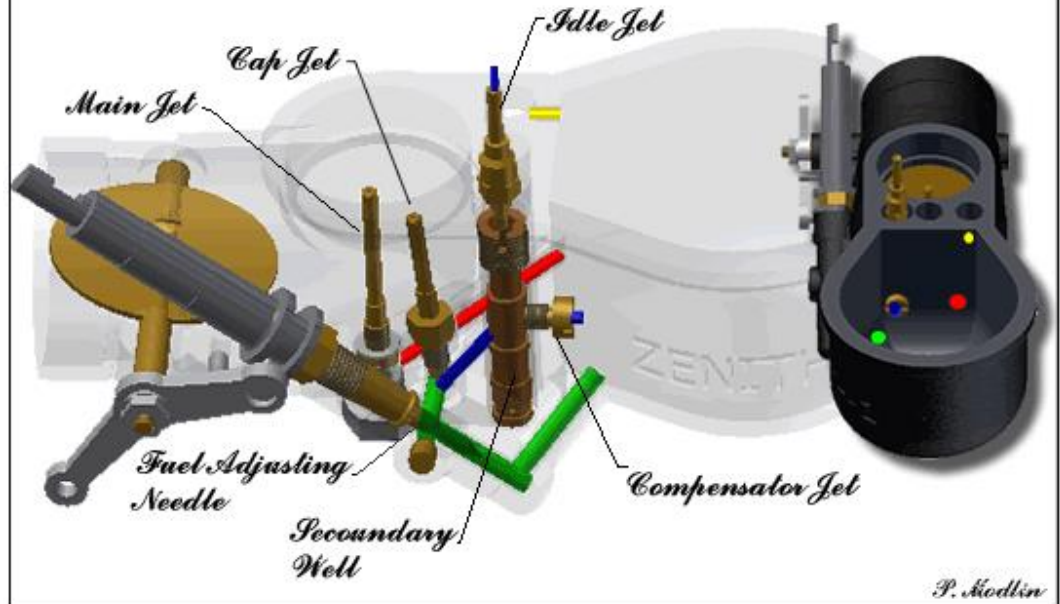
TECH TALK

Zenith Carburetor Basics from modelabasics.com

This article has been copied from the April edition of the Central Iowa Model A Club Newsletter. The article has been condensed from the web site at modelabasics.com.

Paul Modlin, gave permission to publish this article in the Rumbleseat Review Newsletter.

The figure on the right shows the fuel jets and the associated fuel adjustments.



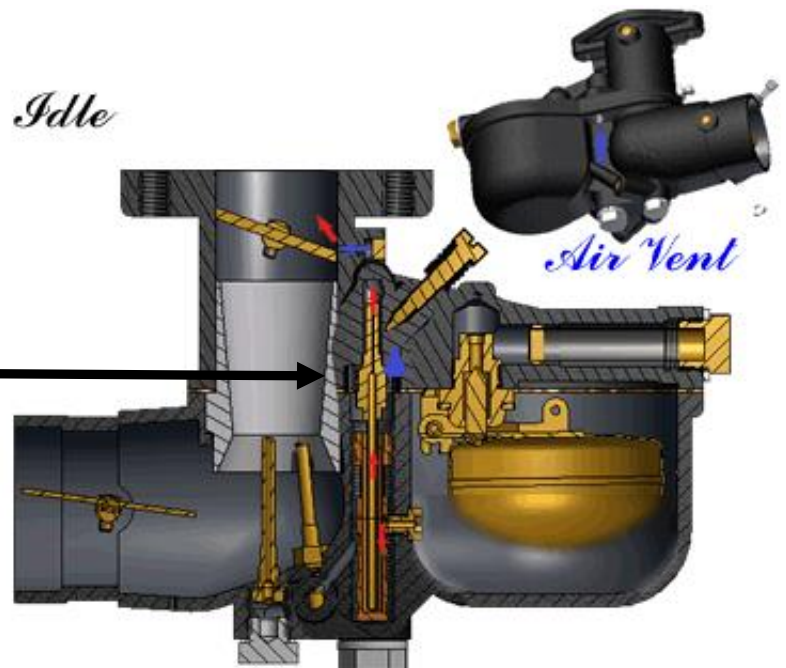
Pulling on the Carburetor Adjustment Knob, often called the GAV (Gas Air Valve) inside the cab opens and closes the Choke Plate. Turning the GAV enriches or leans the fuel mixture flowing through the "Cap Jet".

The "Compensating Jet" is inside the fuel bowl and empties into the "Secondary Well" which is open to the air. The "Cap Jet" connects with the "Secondary Well". The "Cap Jet" can only draw as much fuel as the "Compensating Jet" will allow, regardless of the amount of suction.

The "Cap Jet" has an additional fuel supply from the "Fuel Bowl". The flow rate of the fuel to the "Cap Jet" is controlled inside the cab with the "GAV" adjustment knob. Turning it left (towards the driver) enriches the fuel mixture for the "Cap Jet". The "Cap Jet" is used at low speeds.

The "Main Jet" is connected directly to the "Fuel Bowl". It acts like a straw; the stronger the suction the greater amount of fuel will be supplied. The "Main Jet" kicks in and helps out the "Cap Jet" at higher speeds. When cruising, the "Cap Jet" can be leaned out (turn right) to conserve on fuel.

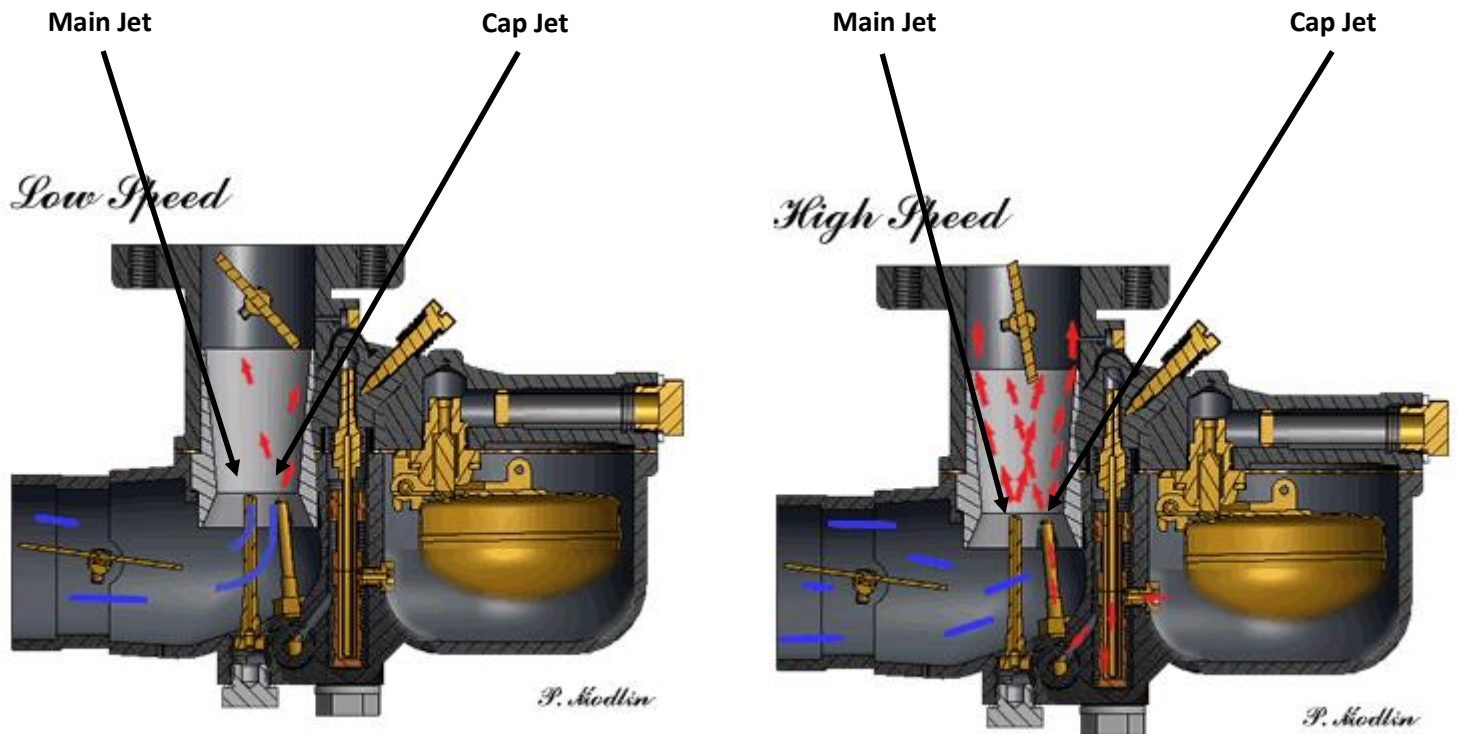
Idling occurs when the "Throttle Plate" is partially open. A vacuum above the plate is created, drawing air through a small hole, which pulls the gas from the secondary well through the "Idle Jet".



Zenith Carburetor Basics from modelabasics.com continue:

The "Main Jet" is connected directly to the "Fuel Bowl". It acts like a straw; the stronger the suction the greater amount of fuel will be supplied. The "Main Jet" kicks in and helps out

the "Cap Jet" at higher speeds. When cruising, the "Cap Jet" can be leaned out (turn right) to conserve on fuel.



Rumbleseat Safety Article

Published in Feb Issue of Rumbleseat Review

Hi again,

I recently sent you an article on using a Noodle to provide extra safety for kids in rumble seats. I have subsequently learned that there are **2 sizes** of Noodle[®] available:

2 1/4" diameter Noodle[®] which was used in my article.

3" diameter which will likely require appropriate modifications in the NAUGAHYDE[®] measurements I provided. Sorry if this caused anyone to holler expletives in your direction!

Joe Maiorana

Ventura County model a Club

ERA FASHIONS



Now that French models for the coming season have actually arrived, there is no longer any doubt that all the preliminary news about a richer, more elegant mode had a good foundation on fact. The following pages present a group of successful models chosen in Paris at the openings. Even though the past months have accustomed us to soft feminine lines, these new French frocks and coats reveal a very decided departure in the direction of still more elaboration.

For the rare woman looking for severely practical straight lines, Paris offers sports clothes, to be worn for practical uses. But even among sports fashions, these form a type by themselves, the exceptions that prove the rule of more softness and femininity.

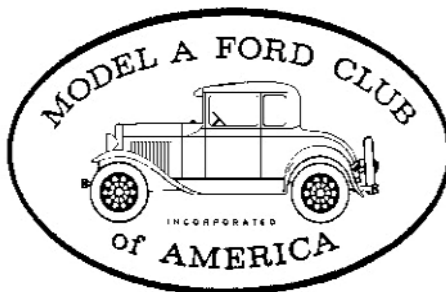
Otherwise, even town costumes and street clothes interpret simple lines in flattering ways. The new suits are a striking illustration. In contrast to the suits of other years that combined simple skirts with jackets that varied only slightly in design, the new suits have all the variety of silhouette and individuality of detail possible in a dress, and the fabrics may be anything from serviceable tweeds to soft lustrous velvets. Street frocks and coats are also noteworthy for a new variety. Their general effect is simple and practical, but invariably some clever feature of cut or of detail lifts them out of the commonplace.

In afternoon frocks, most of the new variations take the form of accenting the natural figure, wrapping or draping or molding the waist into slender lines and making it appear more slender by wide shoulder treatments in capes and scarfs and wide hemlines produced by fullness.

Soft heavy folds arranged in new ways that bring out all the grace of long sweeping lines form the favorite theme in evening frocks. Even where the silhouette is broken by a bolero or a peplum or a flounce, length of line remains by far the most important feature.

Copied from McCall's Magazine, issue October 1930

NATIONAL MODEL A CLUBS



MAFCA
250 S. Cypress St.
La Habra, CA 90631 - 5515
U.S. Membership Cost: \$40

The Wichita A's Model A Ford Club encourages members to join both National MARC and MAFCA Clubs.



MARC
6721 Merriman
Garden City, MI 48315
U.S. Membership Cost: \$38



June 17-21, 2013

Powder Coating Services

A Division Of

LORAC COMPANY

"FOR A DURABLE OVEN-CURED FINISH"

Motorcycle & Auto • Lawn Furniture • Hobbyist
Manufacturers • Aviation • Agriculture • Many Others

Sandblasting Facilities

316-263-2565 • 800-554-0144 • Fax 316-263-5181

MITCH HERRING 624 E. Harry
COATINGS MANAGER Wichita, KS 67211-4205

Wichita A's Club Meeting
Minisa Park, 704 W. 13th. N

Meeting Starts 7:00 PM

4th Monday of each month
No Meeting in December

Newton Radiator and Auto

120 W. 17th St., Newton, Kansas
(316) 283-7553



• Radiator Repair • Heater Cores • Backflush
• Water Pumps • Light Automotive

Chris Cg' Stucky
Cell (316) 288-9023

The Model "A" Medic LLC

New and Used Model A Ford Parts.
Specializing in Full Service Repairs & Restorations.
Free Parts Delivery to Local Events and Monthly Club Meetings!!!!

If you are looking for a Insured, Professional Shop to do your Model A Restoration, The Model A Medic is the place!
Eric Weninger 2045 S Bedford St., Wichita, KS 67207
(316) 619-1821 Monday - Friday 9am - 6pm CST
www.modelamedic.com



Don Grabendike
30 years experience!
Ph: 838-1765
License #2763



RAY HARSHFIELD

Office: (316) 942-1925
Fax: (316) 943-1311
Cell: (316) 305-1705
www.wichitagoldkey.com



3535 W. 13th
Wichita, KS 67203



Speedometer Repair

www.cushmanspeedometer.com
info@cushmanspeedometer.com

5704 N. Athenian Ave.
Wichita, KS 67204
(316) 648-2444
(316) 832-9090

Clarence Howland

1911 Briarcliff
Emporia, Kansas 66801

BUY - SELL - TRADE
Antique Cars and Parts

Cell: (620) 341-3533
Home: (620) 342-0215



Larry Andra

1566 West Lynn Ave.
Wichita, KS 67212-1862

Buy - Sell - Trade
Model A Cars & Parts Only

Cell (316) 619-5196
Phone (316) 943-9845



WALLACE W. WADE
SPECIALTY TIRES
530 Regal Row
Dallas, Texas 75247
(214) 688-0091
Fax (214) 634-8465
1-800-666-TYRE
www.wallacewade.com
wallacewade@earthlink.net

Vintage Tires
ANTIQUE & CLASSIC
CARS - TRUCKS
MILITARY - TRACTORS

WALLACE W. WADE
1 800 666 TYRE

SPECIALTY TIRE DISTRIBUTOR
"IF WE DON'T HAVE IT - WE'LL GET IT"

We've got your
COLLECTOR CAR COVERED

JAMES & JUDI SHARP
1721 E OSAGE, SUITE 100
DERBY, KS 67037
(316) 788 5257

Fueled by:



Collector Car Insurance™

B&B Electric Motor Co.
Your One Stop Industrial Service Center

New • Repair • Rewind
Electric Motors • Pumps

Phone (316) 267-1238 • 1-800-499-1238
Fax (316) 267-0599 • Emergency (316) 641-0806
email: bbemc@msn.com • bbelectricmotor.com

332 Lulu
Wichita, KS 67211

Ed Giesen
Customer Service

Z Model A Parts - Zanes

Ron and Sondra Kester, Owners

773 Central Street
Glade, Kansas 67639

Phone: 785-543-6729

Fax: 785-543-3013

e-mail: 2officegirls@ruraltel.net



BRASSWORKS
Aries Mufflers

New and Used Antique Parts

MILT'S MODEL 'A' REPAIR, PARTS & SALES
F.S. Modern Ignitions • Mitchell Overdrive
Overdrive & 4-Speed Transmissions Installed

806 W South Avenue E
Blue Springs, MO 64015
hesfrt@sbcglobal.net

Milton Hessefort
816-229-1949
Cell 816-590-4317

Tulsa Model A Regional Meet
Tulsa, OK
June 9-12, 2014

JIM'S MODEL "A"

Starter & Generator Repair

Specializing in 12 Volt Starters

10405 W. Bartlett St, Wichita, KS 67212
(316) 943-7033

Northwest Missouri Model A Ford Club Regional Meet
St Joseph, MO
June 8-12, 2015

Wichita A's Model A Ford Club
P.O. Box 25
Wichita, KS 67201



Address Service Requested

Wichita A's Model A Ford Club Contacts

- President**, Chris Cushman
president@wichitaas.com.....
- Vice President**, Dennis Ellerman
vicepresident@wichitaas.com.....
- Secretary**, Dawna Ruggles
secretary@wichitaas.com.....
- Treasurer**, Alan Orr
treasurer@wichitaas.com.....
- Tour Chairman**, Don Grabendike
tourchair@wichitaas.com.....
- Swap Meet Chairman**, Tom Ruggles
swapmeetchair@wichitaas.com.....
- Swap Meet Secretary**, John Stone
swapmeetsec@wichitaas.com.....
- Membership**, Susan Stone
membership@wichitaas.com.....
- Newsletter Editor**, Linda Kibbe
editor@wichitaas.com.....
- Webmaster**, Darren Schuster webmaster@wichitaas.com

tion of the Wichita A's Model A Ford Club, Inc, a local chapter of the Model A Ford Club of America and the Model A Restorers Club. It's purpose is to keep members informed of past, present and future events, activities, and club news. In addition, this newsletter includes articles and other information to aid in the restoration and enjoyment of the Model A Ford automobile.

This publication is mailed to members, prospective members and editors of similar publications prior to monthly meetings. Meetings are usually the fourth Monday of the month. Members may publish antique car related ads only for free of charge which includes items wanted, items for sale, or items for trade. We invite members to submit articles containing technical Model A information and other interesting tidbits for publication in this newsletter. Items to be published must be submitted to the newsletter editor by deadline shown in the calendar. Wichita A's membership dues are \$25.00 (new members) and \$20.00 (renewals), per year (October to September30). MAFCA dues are \$40.00 per year and MARC dues are \$38.00 per year. An advertisement in this newsletter is \$15.00 per year.