

WICHITA ART MUSEUM

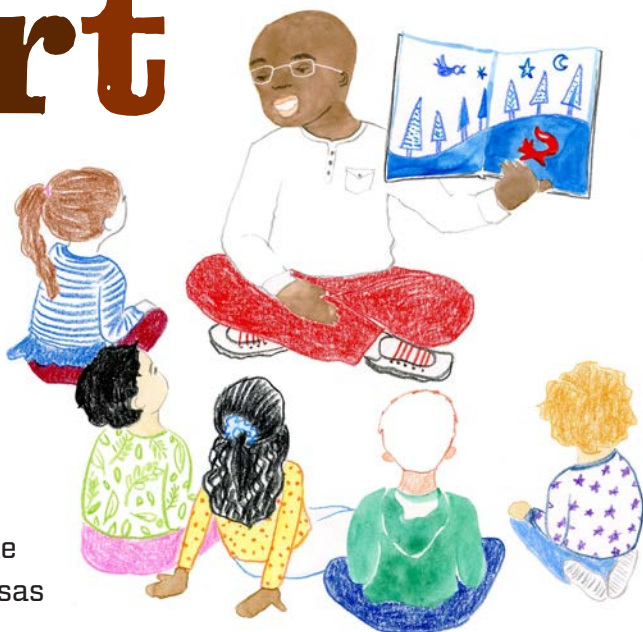
Family & Youth Programs

September through December 2021



**WAM'S FALL CALENDAR IS FILLED WITH
FUN AND IMAGINATION!**

Art Start



Art Start is a FREE program for children ages 3 to 5, engaging preschoolers with works of art and artmaking while emphasizing State of Kansas Early Learning Standards.

Classes are limited to 15 kids, so sign up now before the spots are gone! Advance registration is required online at wichitaartmuseum.org/artstart.



September: Magnificent Magnets

What attracts a magnet? Learn about the magic of magnetism and use its power to paint!

Families (adult and child):

Tuesdays 10:30-11:30 am or 1:30-2:30 pm

September 7 | 14 | 21 | 28

Groups (daycare or preschool):

Thursdays 10:30-11:30 am or 1:30-2:30 pm

September 9 | 16 | 23 | 30

October: Hanging with the Gnomies

Are there any magical creatures wandering around your garden? Create a home to attract a friendly gnome.

Families (adult and child):

Tuesdays 10:30–11:30 am or 1:30–2:30 pm

October 5 | 12 | 19 | 26

Groups (daycare or preschool):

Thursdays 10:30–11:30 am or 1:30–2:30 pm

October 7 | 14 | 21 | 28



November: Rolling with the Homies

Make playful patterns with paint. It'll be a rollin' good time!

Families (adult and child):

Tuesdays 10:30–11:30 am or 1:30–2:30 pm

November 2 | 9 | 16

Groups (daycare or preschool):

Thursdays 10:30–11:30 am or 1:30–2:30 pm

November 4 | 11 | 18



December: Scarves, Mitten, Hats: What's in an Outfit?

Peruse portraits in the Nordfeldt exhibition and make a fashion statement with your own work of art!

Families (adult and child):

Tuesdays 10:30–11:30 or 1:30–2:30

December 7 | 14

Groups (daycare or preschool)

Thursdays 10:30–11:30 am or 1:30–2:30 pm

December 9 | 16



Family



A Nod to Nordfeldt

Saturday, September 25 | 11 am to 3 pm

Välkommen Nordfeldt! (Welcome Nordfeldt!) Join us for opening day and see our newest exhibition, *B.J.O. Nordfeldt: American Internationalist*. Walk the gallery and trace his travels through many parts of the country. Discover the places he lived and worked—including Wichita—and how they influenced his artistic style and development. Have fun making family-friendly art inspired by Nordfeldt's work and his Swedish heritage. Enjoy live performances by Lindsborg Swedish Folk Dancers, fiddlers, and a Swedish festival atmosphere.

ArtVenture

**FREE, FUN
AND FANTASTIC**

PetPalooza!

Saturday, October 23 | 11 am to 3 pm

This month, Family ArtVenture goes to the dogs! Bring your special companion along for some pet-friendly outdoor activities and stroll through the Art Garden. The Wichita Children's Theatre and Dance Center will be here in the S. Jim and Darla Farha Great Hall to entertain and delight audiences with two performances including *Where the Wild Things Are* and *Sleeping Beauty*. The fun continues indoors with an art project inspired by the pets we love! **Sorry, humans only inside the museum.**

Are you looking for a new companion? The Kansas Humane Society will be on hand with a pet-adoption station, pet-friendly activities, and helpful information on caring for your special friend.



Winter Art

HOLIDAY



November Art Mania

Friday and Saturday, November 26 and 27 | 11 am to 3 pm

Start your holiday season with us! WAM presents its annual Winter Art Mania with two action-packed days of free admission, including exciting artmaking, gallery-looking explorations, and much more fun and surprises. The Wichita Children's Theatre and Dance Center joins us Saturday for special live performances that are sure to get you in the holiday spirit! What is WAM thankful for? Our visitors!



Mania



FUN FOR THE WHOLE FAMILY!

December Art Mania

Sunday, December 26 | 11 am to 3 pm

Keep your holiday fun going! Join us for an exciting day of art exploration, activities, and more. Bring your whole reindeer crew! Make art, create a family masterpiece together, and explore the museum galleries and exhibitions. Admission will be free all day for this special event.



Friends of the Wichita Art Museum Holiday Open House



Sunday, December 5 | 2 to 4 pm

This annual event, sponsored by the Friends of the Wichita Art Museum, is a much-treasured tradition for Wichitans. Meet Santa Claus and his reindeer—yes, live reindeer will return! Enjoy sweet treats and listen in during Glitter Elf's holiday storytime. And there's artmaking, too—bring the kids for make-it/take-it projects. Free admission, refreshments, and activities.



WAM is FREE every Saturday all year long thanks to **Colby Sandlian** of **Sandlian Realty**.

Youth Education Programs are sponsored by **Lynne Ruffin-Smith Charitable Foundation**.

2021 exhibitions and public programs are generously supported by the **Downing Foundation**.

ILLUSTRATIONS BY LINDSEY YANKEY



Helpful tips for a great family WAM visit

Visit the Living Room

At WAM, there is a special room just for families! The Living Room is located on the main level. It is a great place for families to gather, have fun, and relax.

Make it Fun

To look at and enjoy the art, you don't have to be an expert. Imagine yourself in the artwork. Feel the movement! Get silly!

Slow it Down

Take your time with the artwork. Sit down and look for as long as you like. Looking longer at artwork can be really powerful.

Change it Up

It is okay to take a break, hang out on a couch, grab a bite to eat in the Muse Cafe, even lie beneath the Chihuly Chandelier. Hey—you can even strike a pose!

You Don't Have to See it All

Remember museums are big, and it's okay just to explore a few galleries today. Come back for more on your next visit. Saturday admission is free all year long.



Solve a Secret, Learn a Code

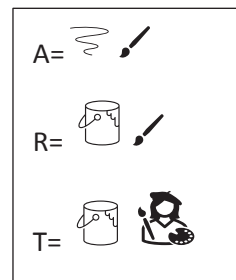


The artist B.J.O. Nordfeldt traveled and lived in many places around the world. In the 1930s, he enjoyed extended stays in Wichita, teaching art to students. This painting of *Girl Holding a Flower* used to hang in one of Wichita's schools.

B.J.O. Nordfeldt, *Girl Holding a Flower*, about 1934. Oil on canvas, 31 3/4 x 25 3/4 inches. Wichita Public Schools, on long-term loan to the Wichita Art Museum

Which Wichita school displayed this artwork in their building?

Can you crack the code and reveal the secret message? Follow the coordinates of the table on the next page, which combine two symbols, to decode the answer to the question above. Use the code to create your own secret message, and share it with a friend!



Solution on previous page.



A	B	C/K	D	E
F	G	H	I	J
L	M	N	O	P
Q	R	S	T	U
V	W	X	Y	Z









WICHITA ART MUSEUM

1400 West Museum Boulevard
Wichita, Kansas 67203

Nonprofit Organization
U. S. Postage PAID
Wichita Art Museum Inc.

CHANGE SERVICE REQUESTED



Museum Hours

Closed on Monday

Tuesday–Saturday:

10 am–5 pm

Sunday:

Noon–5 pm

wichitaartmuseum.org/learn

For information or questions,
email education@wichitaartmuseum.org.

