

RICOH
imagine. change.

Wide Format Latex Printer

RICOH Pro L5160e



Pro L5160e

up to
502.5
ft./hour full color



More color. More productivity. **More opportunity.**

Show your clients' true colors. Defy the standard gamut and enhance your output with the RICOH Pro L5160e.

Giving you true media versatility, the RICOH Pro L5160e roll-to-roll wide-format latex printer delivers outstanding quality and durability for both indoor and outdoor applications. Designed for demanding production environments, this system offers 4-, 5- or 6-color configurations with CMYK, CMYK + White or CMYK + Orange & Green. Approach new customers with the confidence that you can accurately match brand colors across substrates and achieve the smooth gradations, vibrant hues and lifelike skin tones they're seeking.

- Meet your customers' demands and your workflow needs with a customizable eight-ink cartridge design.
- Expand your application capabilities with support for flexible media across a large variety of substrates up to 64" wide and up to 121 lbs.
- Expect precision in every detail with 3,840 nozzles that eject thousands of droplets per second for exacting results you can count on year after year (3 Ricoh MH5441 printheads with 1,280 nozzles per head).
- Produce work that's ready for immediate finishing and handling with Ricoh's environmentally-friendly non-hazardous aqueous resin latex ink, which dries instantly, creating a durable surface.
- Create color-intensive graphics with high-opacity whites, rich blacks and an expanded color gamut with CMYK + Orange & Green.
- Get jobs out faster with speeds up to 502.5 ft²/hr in production mode and up to 269.1 ft²/hr for installations that require fine detail at a close viewing range.

Expand production with an intuitive flow.

From the easy-to-use touch panel to the remote monitoring and tracking options, auto-adjustment sensor and auto-cleaning system, the RICOH Pro L5160e features new Ricoh technology for an exceptional customer experience that minimizes downtime and maximizes profitability.



1 Eight-ink cartridge configuration (600ml or 1200ml)

2 Attention Light

3 Internal LED light to monitor image quality

4 Auto-cleaning system

5 Intuitive 4.3" operation touch panel

6 "IR" infrared drying-heater system

7 Waste ink bottle

8 Roll holder, take-up and media tensioner devices

9 Single-roll take-up unit

10 Media cutter

Take on exciting new projects with true **media versatility.**

From traditional signage to trending graphics, the RICOH Pro L5160e lets you offer in-demand products. Approach buyers in retail, event planning, advertising, transportation, medical centers and more. Answer their needs with premium quality and bolster your bottom line with high-margin applications.



Indoor and retail signage

Create eye-catching advertising, pop-up displays, roll-up banners, window graphics and signage for a wide range of uses.



Exhibition and event graphics

Get color consistency across substrates for indoor applications, including floor and wall graphics, light boxes and hanging banners.



Outdoor applications

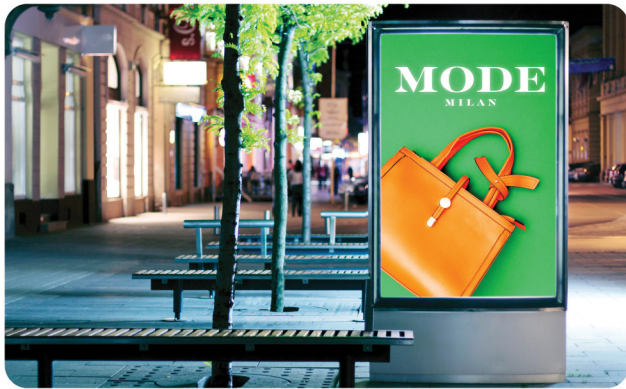
Offer your customers standout banners and building wraps that are ideal for weathering outdoor environments.



Vehicle wraps

Produce high-quality, easy-to-install vehicle wraps. Ricoh's aqueous resin latex inks dry fast for immediate cutting and lamination.

Print on pressure-sensitive and self-adhesive vinyl, banners, canvas, coated and uncoated paper, backlit/clear films, textiles and more.



Backlits

Achieve vibrant graphics that pop when you use white ink for spot white, flood white or three-layer printing for day/night backlits.



Wallcoverings and decor

Grow your offerings and capture profit potential with customized wallcoverings, photo wall murals and more.



Canvases and fine art

Expand your services with high-resolution fine art, photo reproductions and designer prints. Print on canvas that stretches and wraps without cracking.



Labels and decals

Print high-quality stickers and decals for signage, vehicles and retail/branding applications for industries such as pharmaceuticals, cosmetics, beverages, household goods and more.

Expand your possibilities. Open a world of opportunity.

Configure the RICOH Pro L5160e to meet your color and workflow priorities:

- CMYK for maximum productivity to meet demanding turnaround times.
- CMYK + White for expanded media capabilities with spot white, flood white or color white color.
- CMYK + Orange & Green for an extended gamut that delivers the most accurate color match.



CMYK 4-Color Configuration

Choose dual CMYK for maximum productivity and longer uninterrupted runs. 1200cc bulk ink cartridges are available to maximize cost-effectiveness and lengthen production runs.



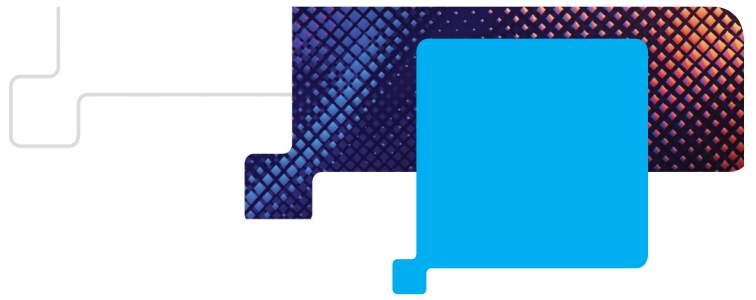
CMYK + White 4-Color + White Configuration

Expand your substrate options to clear and colored media. Flood white ink to make colors pop, apply it as a pure spot color or use it as a mid-layer (color-White-color) for day/night applications to create double-sided graphics.



CMYK + Orange & Green 6-Color Configuration

Maximize your color capabilities. Orange and Green inks increase the CMYK gamut by 22%, giving you the confidence to match brand colors and logos with ease.



Energize your business.



Intelligent design for modern productivity.

- Experience superior ease-of-use with an intuitive 4.3" operation touch panel.
- Oversee print quality during production with an interior LED light.
- Reduce operator intervention and ensure repeatable results with the auto-cleaning system.
- Monitor your device status from anywhere on the shop floor using the optional Attention Light.



Advanced technology for superb image quality.

- Go from PDF to finished product in record time with ColorGATE PS20 Select RIP software with the latest Adobe® PDF Print Engine, designed to give you more speed and control.
- Expect consistent quality with the embedded Ricoh reference Patch, which assesses dot position and media feed, detects missing nozzles and auto-registers blocked nozzles.
- Rely on RICOH's MH5441 industrial-grade printheads and variable-drop grayscale image technology for pristine output time after time.



Eco-friendly, fast-cure inks that get you to the finish line faster.

- Finish, handle and install work immediately with Ricoh's aqueous resin inks, which are cured as soon as they exit the printer.
- Contribute to a safe environment for your shop with GREENGUARD®-certified, odorless* latex inks, ideal for indoor applications.
- Reduce your footprint with an ENERGY STAR®-certified system that consumes under 5.2W in sleep mode and under 6000w during operation.



Solutions that create opportunity and drive revenue.

- Use RICOH Supervisor-I software to easily view and monitor basic business metrics, such as ink consumption, print volume, operating time, ink capacity and more from a customizable dashboard.
- Engage our Wide Format Professional Services team to capture more opportunities and maximize the efficiency of every job, regardless of the mix of brands on your shop floor.
- Collaborate with top experts with the optional Ricoh Wide Format Elite Access professional service. Have a direct channel to industry veterans who provide guidance on complex production challenges.

* There is a wide range of media with very different odor profiles.
Some of the media can affect the odor performance of the final print.

RICOH Pro L5160e

SYSTEM SPECIFICATIONS

General

Printhead Type	3 RICOH MH5441 printheads with 1,280 nozzles per head
Ink Type	Aqueous Resin Latex Ink
Resolution	450dpi, 600dpi, 900dpi, 1200dpi
Ink Configurations	4 colors: CMYK 4 colors + White: CMYK, W 4 colors + Orange and Green: CMYK, OR, G
Media Type	Synthetic paper, PET, tarpaulin, weatherproof PVC, window film, polyester, canvas, and more
Curing Method	3 Way (Pre-Print-Post) Heater + IR Heater
Printing Width (max)	63.6" (1,615mm)
Roll Media	Media Feed Width: 64" (1,625mm) maximum 11.7" (297mm) minimum Media Feed Length: Maximum 984.3 feet (300m) or less Media Thickness: Up to 0.43 mm (17 mil) Media Weight: 121 lbs (55 kg) or less Roll Inside Diameter: 2" or 3" Roll Outside Diameter: 9.8" (250mm) or less
Print Margin	0.6" (15mm) at each side (default) 0.2" (5mm) at each side (minimum)
Media Skew	0.2" (5.0mm) or less / 393.7" (10m) variable
Cutting	Y axis cutting (manual or auto)
Auto Cutting Positioning	60/ 80/ 100mm distance from the end of image data
Head Height Adjust	0.07" (default), 0.09", 0.11", 0.15" (1.8mm (default), 2.3mm, 2.8mm, 3.8mm)
Waste Ink Tank	2L Bottle
Printer Interface	Ethernet 100BASE-TX/1000BASE-T (Recommended)
Power Source	AC208-240V 16A 50/60Hz x 2 Lines
Power Consumption (max)	Operate: 6000W Sleep: 5.2W Off: 0.3W
Dimension (W x D x H)	129.9" x 39.3" x 59" (3,300 x 1,000 x 1,500mm)
Weight	848.8 lbs (385 kg)
Operational Panel	4.3" uWVGA (Color touch panel hard keys) Displayed languages: Japanese, English, German, French, Italian, Spanish, Dutch, (European) Portuguese, Russian, Korean, Chinese, Polish
Sound Power Level	Stand-by: 71dB or less Operating: 78dB or less
Installation Environment	Usable Temperature 15°C to 30°C (59°F to 86°F) Usable Humidity 35% to 80% Rh (no condensation) Precision Guaranteed Temperature 20°C to 25°C (68°F to 77°F) Precision Guaranteed Humidity: 40% to 60% Rh

Print Speed

	4C (ft ² /hr)	4C+W (ft ² /hr)	6C (ft ² /hr)	Resolution (dpi)
6 pass	502.5	268.0	357.4	600 x 450
8 pass	349.8	203.4	271.3	600 x 600
12 pass	269.1	138.9	183.0	600 x 900
16 pass	165.8	93.6	113.0	600 x 1200
32 pass	90.4	60.3	60.3	600 x 1200

White Color Printing

White Layer	4C + W (ft ² /hr)	Resolution (dpi)
White Only (12 pass)	82.9	600 x 900
White - 4C (12 pass)	47.4	600 x 900
4C - White (12 pass)	66.7	600 x 900
4C - White - 4C (12 pass)	40.9	600 x 900
White Only (16 pass)	-	-
White - 4C (16 pass)	44.1	600 x 1200
4C - White (16 pass)	53.8	600 x 1200
4C - White - 4C (16 pass)	37.7	600 x 1200
White Only (32 pass)	-	-
White - 4C (32 pass)	24.8	600 x 1200
4C - White (32 pass)	28.0	600 x 1200
4C - White - 4C (32 pass)	21.5	600 x 1200

PC Specifications*

Operating Systems:	Microsoft Windows 8.1 (Pro, Enterprise) Microsoft Windows 10 (Pro, Enterprise) Microsoft Windows Server 2012 Microsoft Windows Server 2016 Microsoft Windows Server 2019 (Apple Mac OS x 10.5.2 or later with Parallels Desktop 4.0 or later for Mac)
Minimum hardware requirements:	CPU: Intel Core i series or later / AMD FX or later RAM: 8GB Free disk space: 250GB Display resolution: 1280 x 1024
Recommended for using one printer:	CPU: Intel Core i7 or later RAM: 16GB Free disk space: 750GB Display resolution: 1280 x 1024
Option recommended for using multiple printers:	CPU: Intel i7 / AMD Ryzen 5/7 3 GHz+ RAM : 16GB Free disk space: 1 TB SSD Display resolution: 1280 x 1024
Display resolution:	1280 x 1024dpi
Installation and operation:	LAN adapter, TCP/IP for network access required

*PC Not Included

Ricoh Software RIP

ColorGATE Production Server
(PS Select Version - in bundle with mainframe)

Features: High color quality modular components, optimal color rendering, consistency of reproduction at any time, maximum productivity, intuitive control concept and user interface, utilizes the latest Adobe PDF print engine

Compatible RIP Software: ColorGATE, Onyx, SAi, Caldera

Consumables*

Ink Pack	Cartridge Capacity
Black	600ml, 1200ml
Cyan	600ml, 1200ml
Magenta	600ml, 1200ml
Yellow	600ml, 1200ml
White	600ml, 1200ml
Orange	600ml
Green	600ml

*Using non-Ricoh supplies & parts may affect the hardware performance, print quality, and machine reliability.

Environmental Information

Inks New V.2 Aqueous durable (latex) inks have very low emissions of VOCs (volatile organic compounds) and lack of odor, requiring no ventilation

GREENGUARD Gold Certification

ENERGY STAR Certified

Best Management Practices for Perchlorate Materials set in California Yes

California Proposition 65 Safe Drinking Water and Toxic Enforcement Act of 1986 Yes

Mercury Reduction and Education Yes

Model Toxics in Packaging Legislation Yes

New York City Law Yes

Vermont Mercury Reduction Act Yes

Safety Regulations CB Authentication (IEC 60950-1) UL 62368-1 CAN/CSA C22.2 No.62368-1

EMC & EMF Compliance FCC Part15 Subpart B (Class A) Canada : ICES-003

About GREENGUARD Certification

UL GREENGUARD GOLD Certification to UL2818 indicates products that are certified to UL's GREENGUARD standards, having low chemical emissions and improving the quality of air in indoor environments in which the products are used. For more information, visit ul.com/gg or greenguard.org.

Specifications are subject to change without notice.

RICOH
imagine. change.

www.ricoh-usa.com



Ricoh USA, Inc., 300 Eagleview Blvd, Exton, PA 19341, 1-800-63-RICOH.
©2021 Ricoh USA, Inc. All rights reserved. Ricoh® and the Ricoh logo are registered trademarks of Ricoh Company, Ltd. All other trademarks are the property of their respective owners. This document is for informational purposes only and this document and any related services or products described herein are not intended to provide any legal, regulatory, compliance, or other similar advice. You are solely responsible for ensuring your own compliance with all legal, regulatory, compliance, or other similar obligations. While care has been taken to ensure the accuracy of this information, Ricoh makes no representation or warranties about the accuracy, completeness or adequacy of the information contained herein, and shall not be liable for any errors or omissions in these materials. Actual results will vary depending upon use of the products and services and the conditions and factors affecting performance. The only warranties for Ricoh products and services are as set forth in the express warranty statements accompanying them.

R4155